

V&V Reference Report

L2 ASCDS Version : 7.6.8.1

Observation 2988 - L2 Version 001
Chandra X-Ray Center

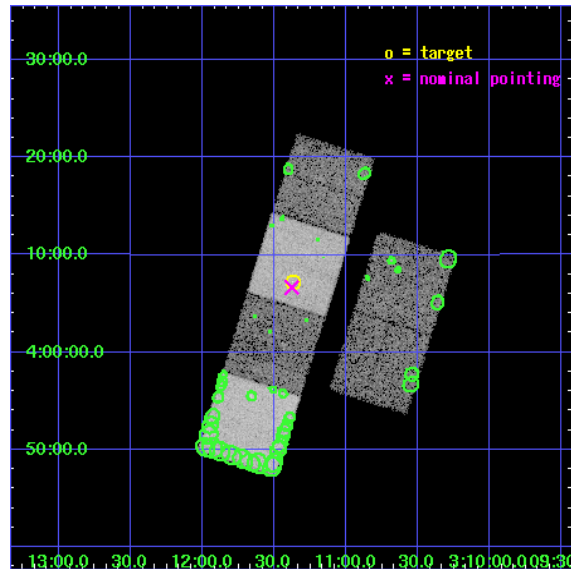
L2 Processing Date : Aug 29 2006

Contents

1	Front	2
2	OBI	3
2.1	OBI	3
2.1.1	Images	3
2.1.2	Bias	3
2.1.3	Parameters	4
2.1.4	Events	4
2.2	Compared Parameters	5
2.3	Aspect	6
2.4	Star Slots	9
2.4.1	Slot 3	9
2.4.2	Slot 4	10
2.4.3	Slot 5	11
2.4.4	Slot 6	12
2.4.5	Slot 7	13
2.5	FID Slots	14
2.5.1	Slot 0	14
2.5.2	Slot 1	15
2.5.3	Slot 2	16
3	Point Sources	17
A	Summary	18
A.1	Status	18
A.2	Comments	18

1 Front

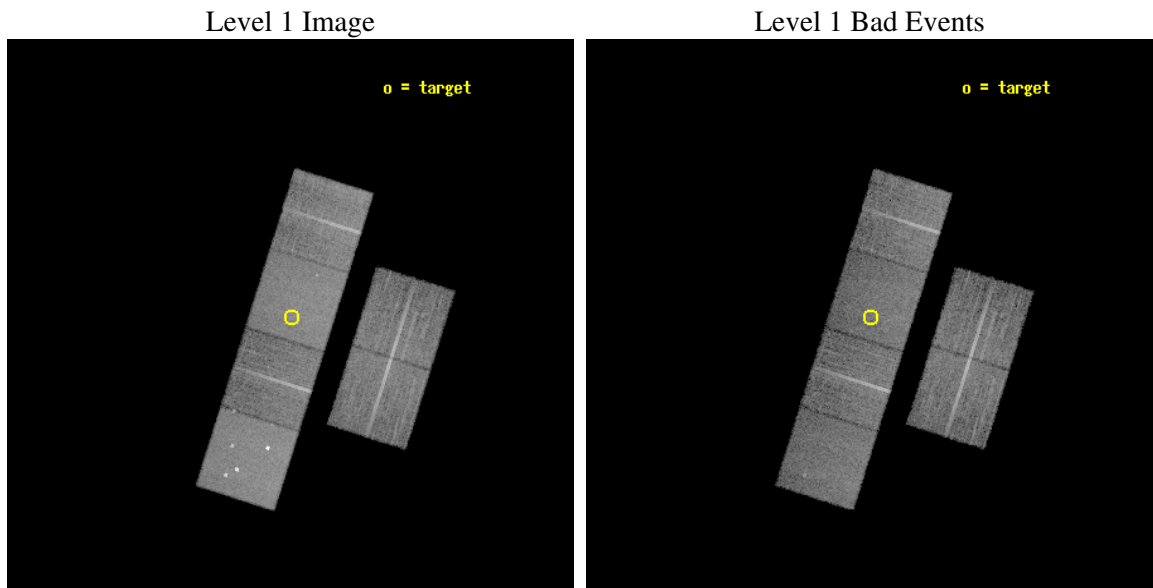
seq_num	700427
obs_id	2988
title	CHANDRA OBSERVATIONS OF A POPULATION OF TYPE 2 QUASARS DISCOVERED IN THE DPOSS
observer	PROF. S. DJORGOVSKI
object	PSS 0311+0407
dtcycle	0
cycle	P
ra_targ	47.843333
dec_targ	4.120556
ra_nom	47.844603381096
dec_nom	4.1109037789833
roll_nom	287.56866971567
revision	2
ontime	14960.000013933
livetime	14770.567485926
ontime2	14960.000013933
ontime3	14960.000013933
ontime5	14960.000013933
ontime6	14960.000013933
ontime7	14960.000013933
ontime8	14960.000013933
l2events	138346



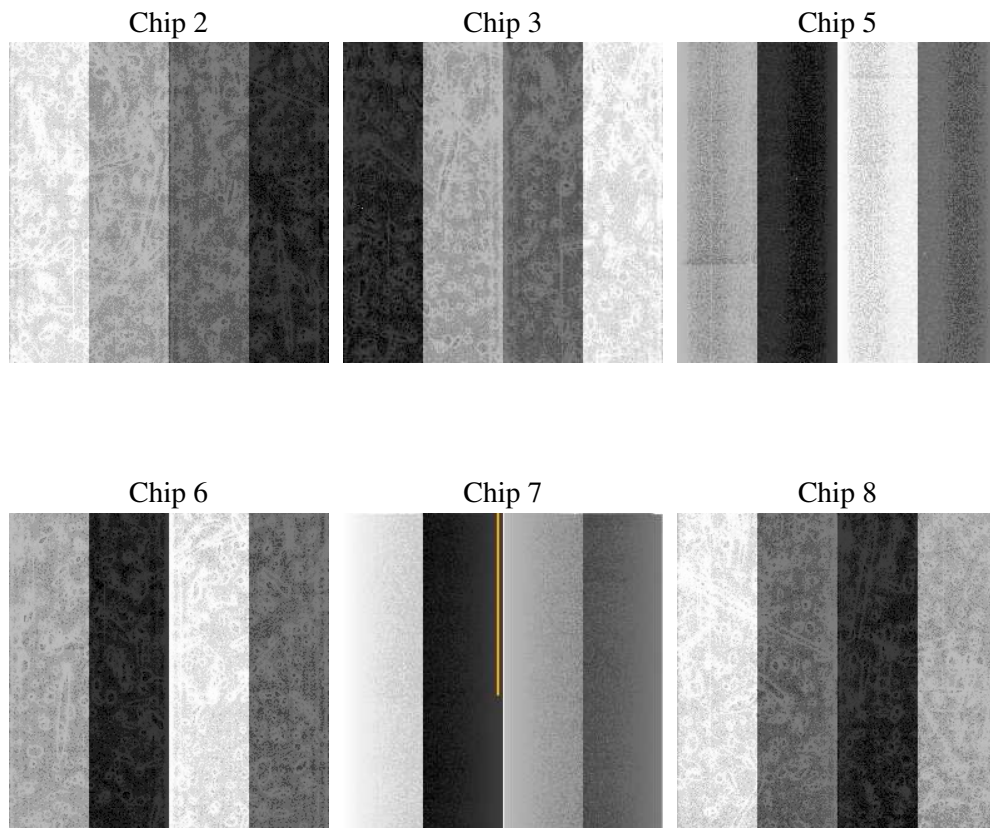
2 OBI

2.1 OBI

2.1.1 Images



2.1.2 Bias



2.1.3 Parameters

obi_num	0
ascdsver	7.6.8.1
caldbver	3.2.3
date	2006-08-29T20:09:47
revision	2

sched_exp_time	15000.000000
ontime	14966.934433222
ontime2	14966.934433222
ontime3	14966.934433222
ontime5	14966.934433222
ontime6	14966.9344033
ontime7	14966.934433222
ontime8	14966.934433222
l1events	656939

2.1.4 Events

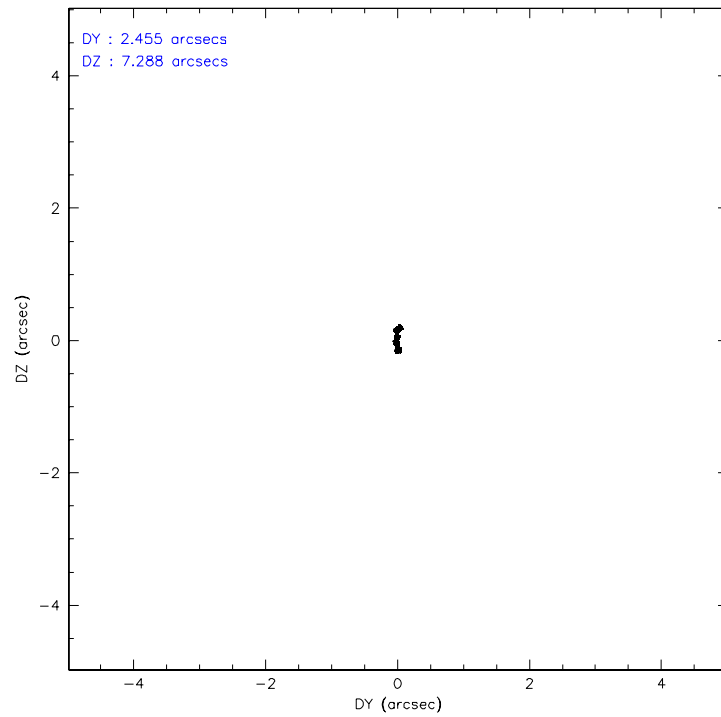
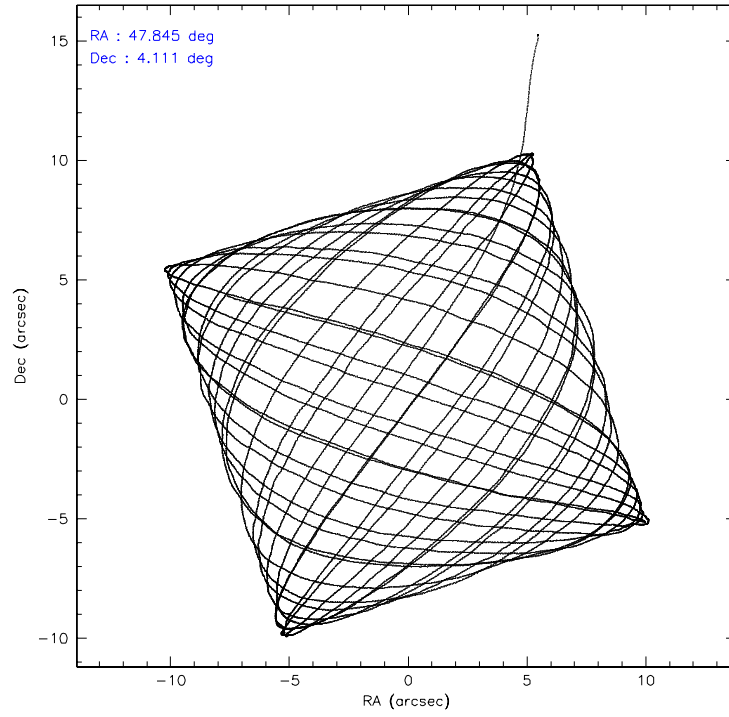
	ccd 2	ccd 3	ccd 5	ccd 6	ccd 7	ccd 8
level 1 events	96313	91570	138375	92884	121249	116548
rejected events	85651	80909	73805	81908	74951	91440
rejected %	88%	88%	53%	88%	61%	78%

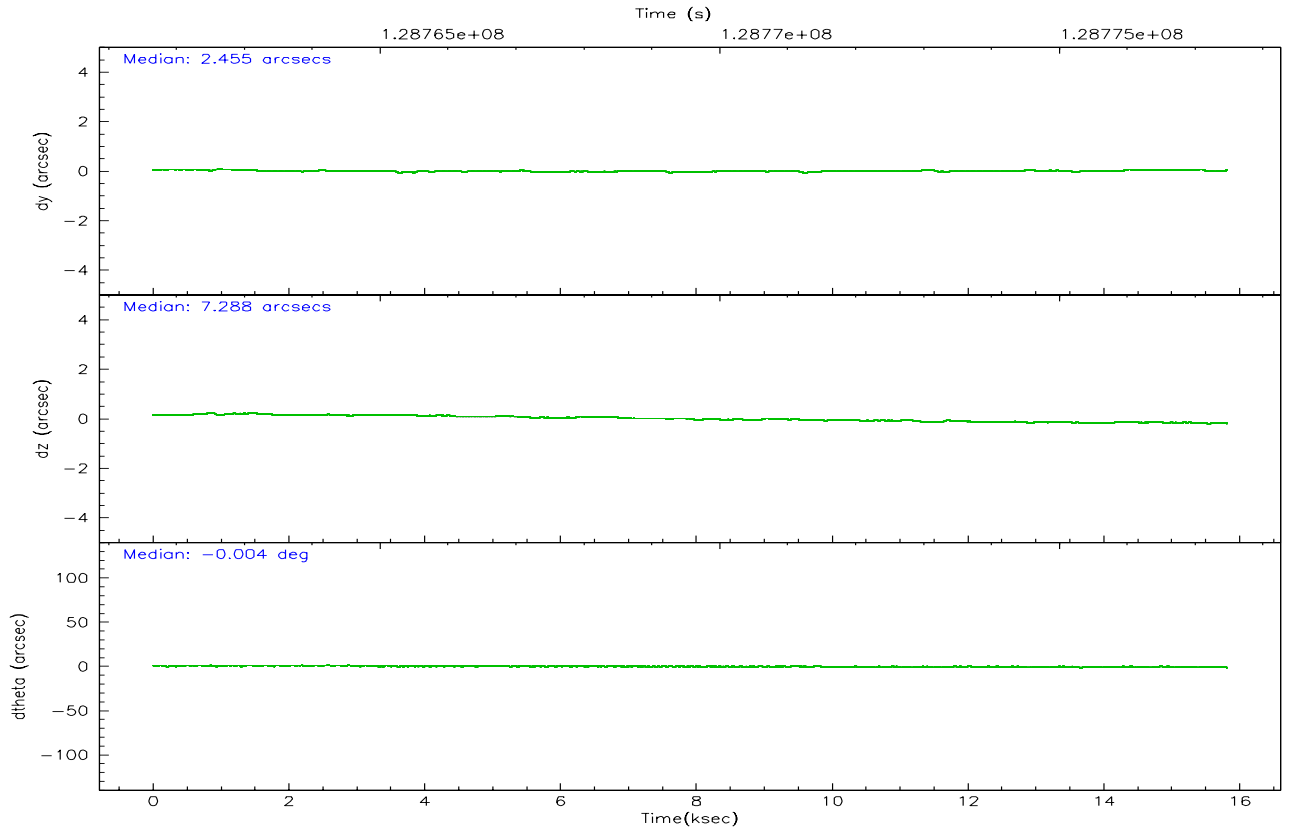
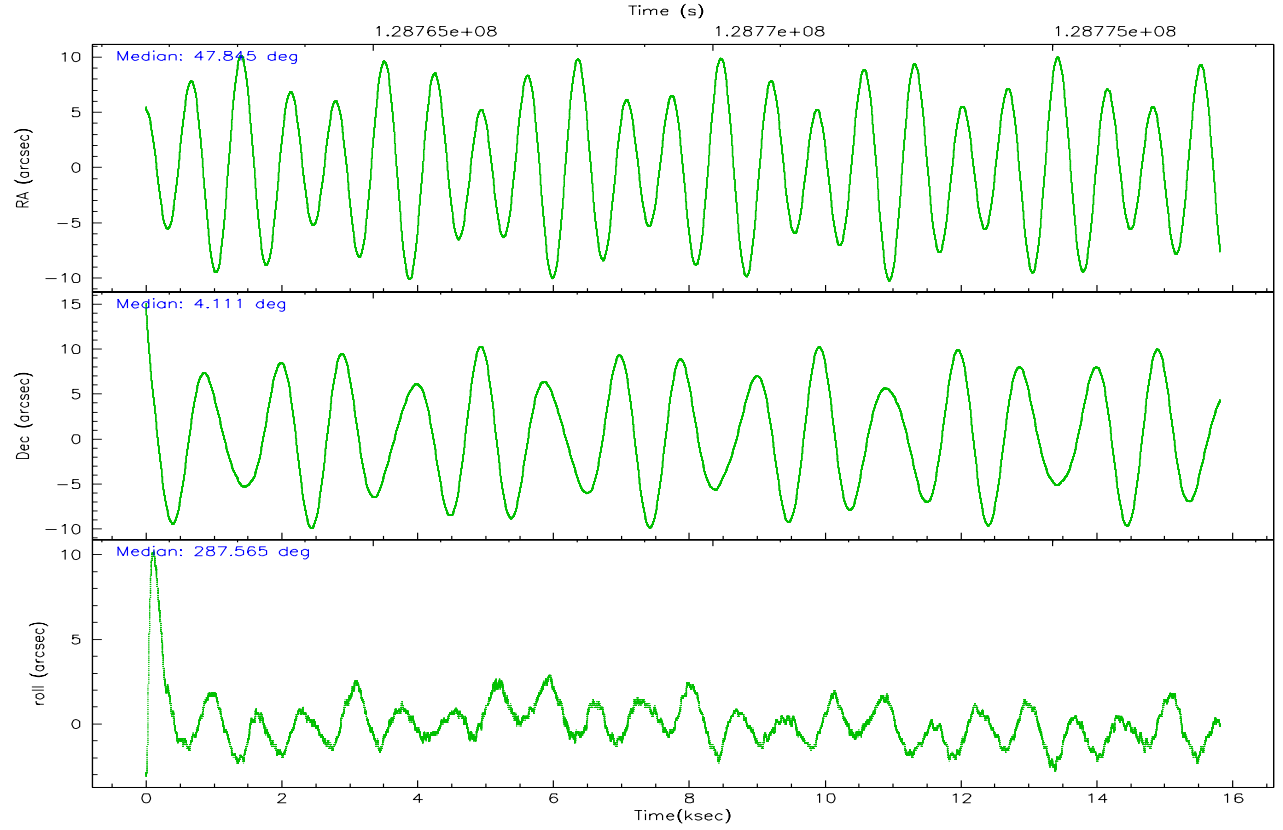
	ccd 2	ccd 3	ccd 5	ccd 6	ccd 7	ccd 8
grade 0 events	4429	4481	10062	4443	2778	7827
	4%	4%	7%	4%	2%	6%
grade 1 events	51	40	108	48	83	66
	0%	0%	0%	0%	0%	0%
grade 2 events	2375	2222	18750	2271	11283	5517
	2%	2%	13%	2%	9%	4%
grade 3 events	1006	992	1314	1104	2362	2877
	1%	1%	0%	1%	1%	2%
grade 4 events	976	995	1236	995	2395	2658
	1%	1%	0%	1%	1%	2%
grade 5 events	3362	3712	6273	4090	8315	4939
	3%	4%	4%	4%	6%	4%
grade 6 events	1883	1975	33232	2168	27491	6259
	1%	2%	24%	2%	22%	5%
grade 7 events	82231	77153	67400	77765	66542	86405
	85%	84%	48%	83%	54%	74%

2.2 Compared Parameters

Parameter	Planned	Actual	Parameter	Planned	Actual
Instrument	ACIS	ACIS	Obspar format version number	6	6
Detector	ACIS-235678	ACIS-235678	Obspar file type	PREDICTED	ACTUAL
Grating	NONE	NONE	Obspar update status	NONE	UPDATED
Data mode	FAINT	FAINT	On-chip summing requested	N	N
Observation mode	POINTING	POINTING	Subarray requested	NONE	NONE
Pointing RA	47.824195	47.84460338109598	Alternating exposures requested	N	N
Pointing Dec	4.129067	4.110903778983319	Primary exposure time	0.000000	3.2
Pointing Roll	287.413516	287.5686697156704			
SIM focus pos (mm)	-0.684267	-0.6828225247311905			
SIM defocus (mm)	0	0.001444936568705701			
SIM translation stage pos (mm)	-190.132523	-190.1400660498719			
SIM translation stage offset (mm)	0	0.00754346686406393			
Observation start time	128762472.184000	128761197.51367			
Observation start date	2002-01-30T07:20:08	2002-01-30T06:59:57			
Observation end time	128777472.184000	128778161.26435			
Observation end date	2002-01-30T11:30:08	2002-01-30T11:42:41			
Read mode	TIMED	TIMED			

2.3 Aspect



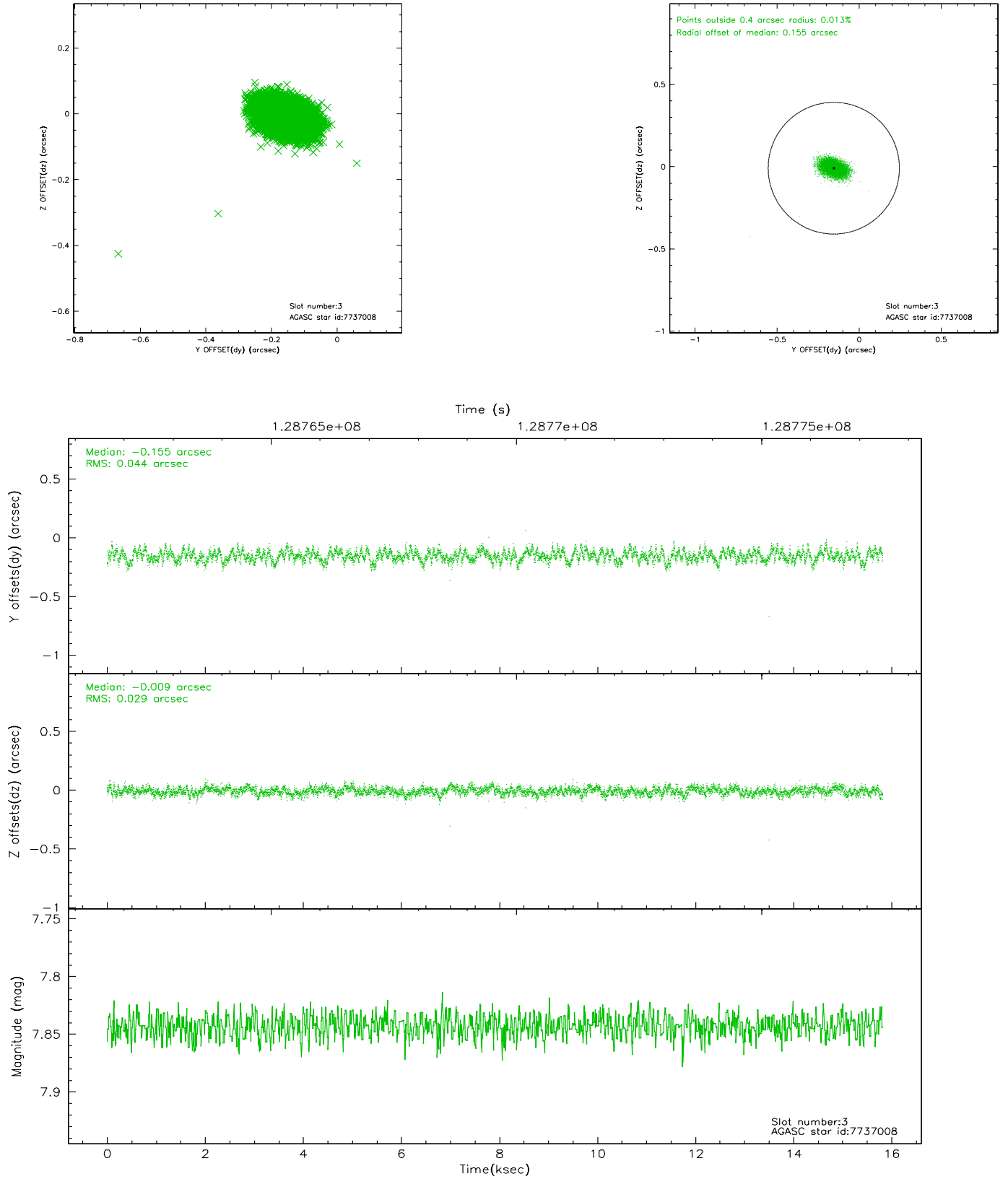


Slot Statistics

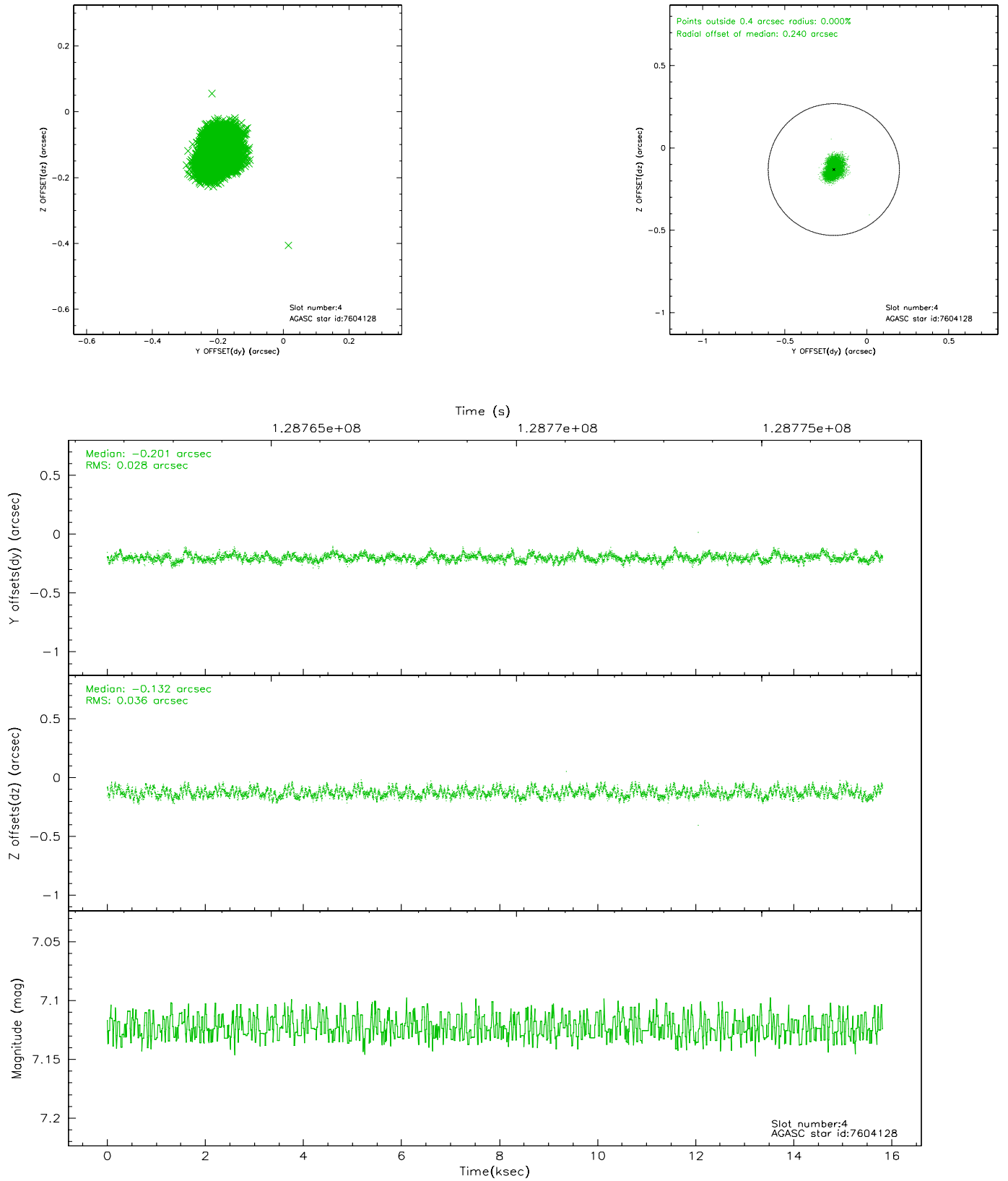
slot	status	id	mag	n_pts	med_dy	med_dz	dr1	dr2	ra	dec	mean_y	mean_z
0	FID	ACIS-S-2	7.11	3859	-0.000	0.031	0.007	0.011	0.000000	0.000000	-755.09	-1728.43
1	FID	ACIS-S-4	7.20	3859	-0.093	-0.008	0.005	0.009	0.000000	0.000000	2157.97	179.71
2	FID	ACIS-S-5	7.24	3859	0.062	-0.014	0.006	0.011	0.000000	0.000000	-1807.51	173.71
3	GUIDE	7737008	7.84	7717	-0.155	-0.009	0.055	0.092	47.893265	4.723267	-1966.88	876.20
4	GUIDE	7604128	7.12	7718	-0.201	-0.132	0.049	0.078	47.412135	4.384216	-1319.61	-1136.68
5	GUIDE	7742104	9.25	7716	0.238	0.105	0.086	0.138	48.376498	3.638513	2278.55	1364.87
6	GUIDE	7739992	9.36	7716	0.003	-0.041	0.074	0.123	47.606496	4.258171	-676.85	-606.82
7	GUIDE	7738856	9.48	7715	0.115	0.074	0.091	0.146	48.151508	3.961069	928.88	940.44

2.4 Star Slots

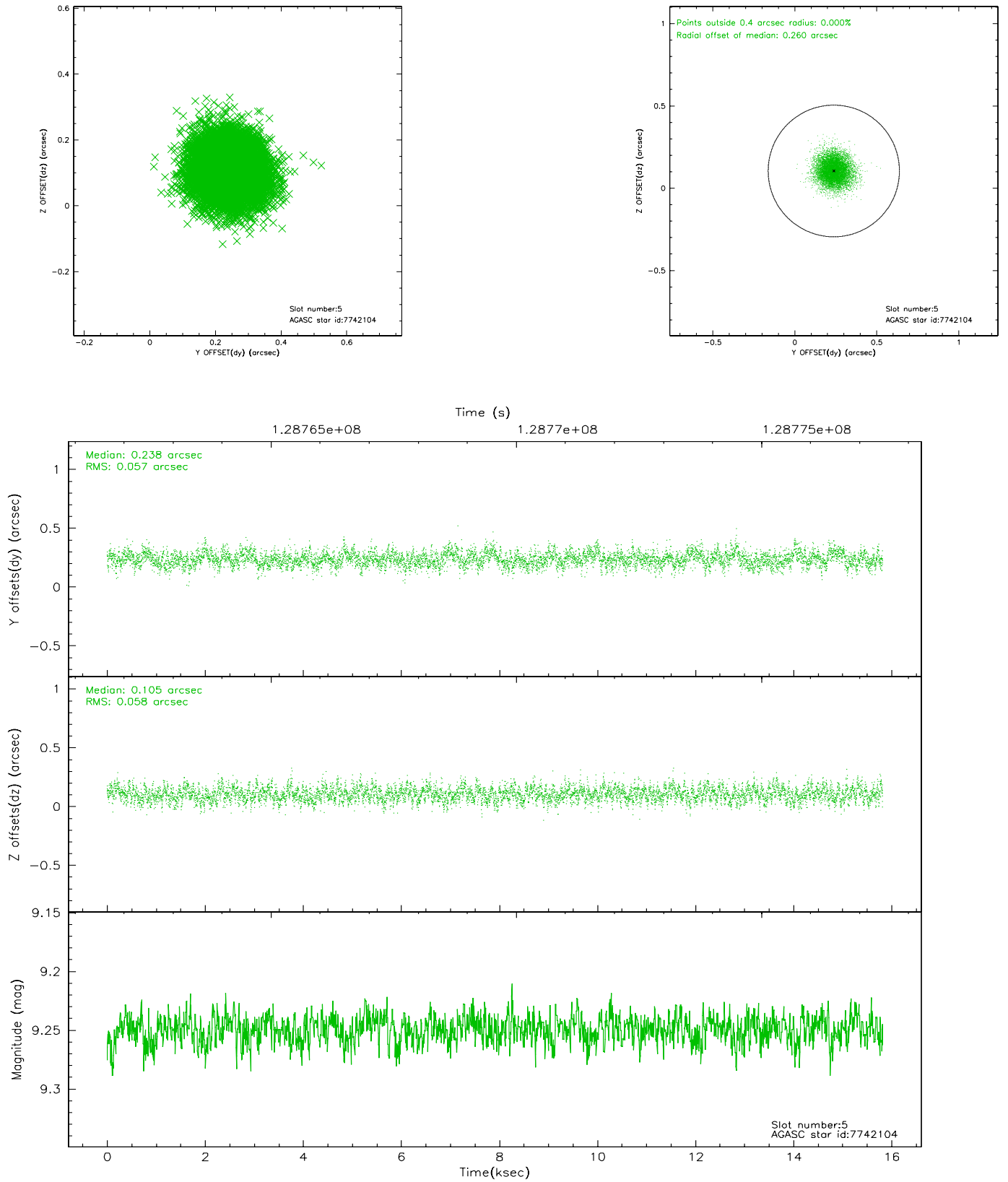
2.4.1 Slot 3



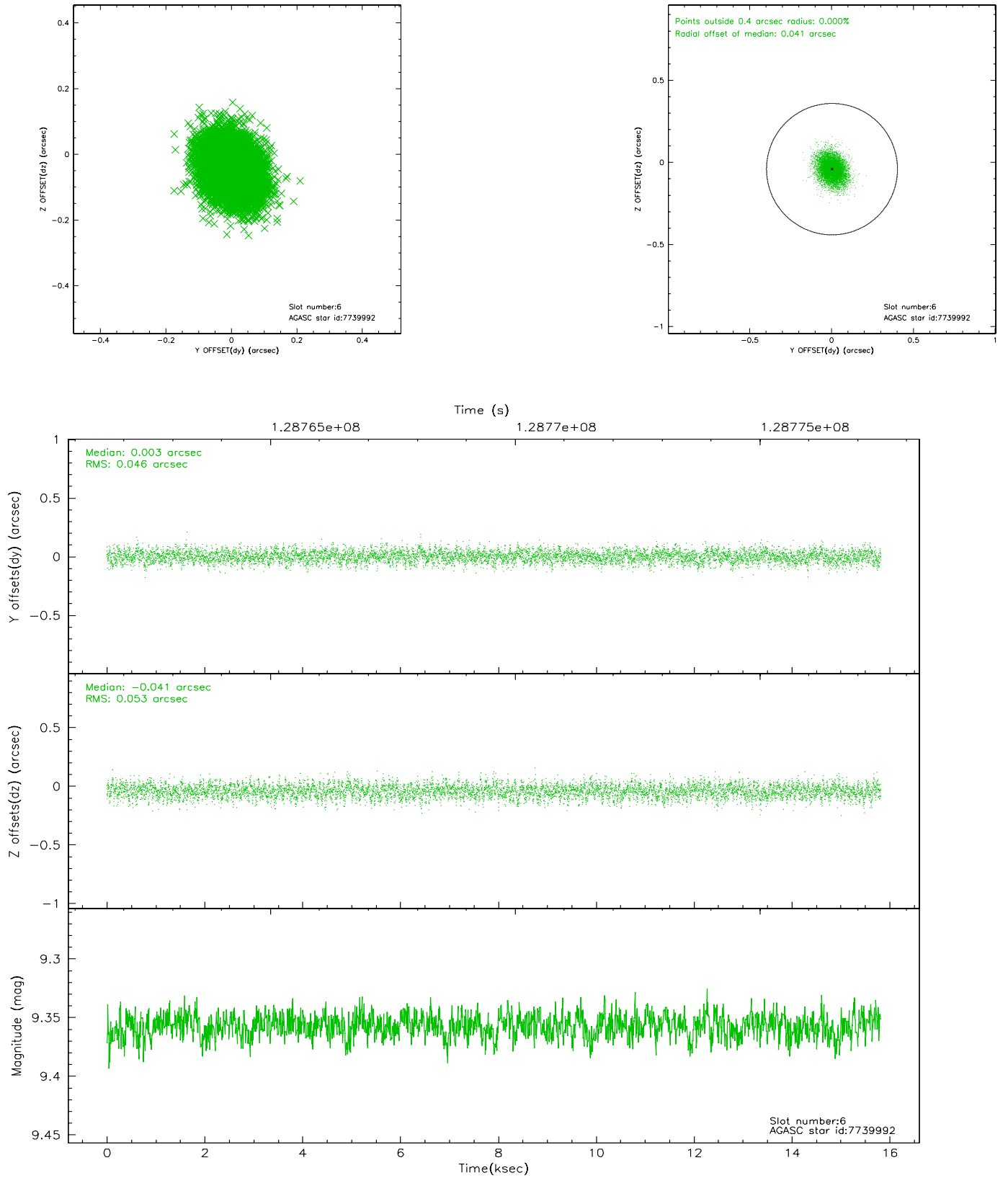
2.4.2 Slot 4



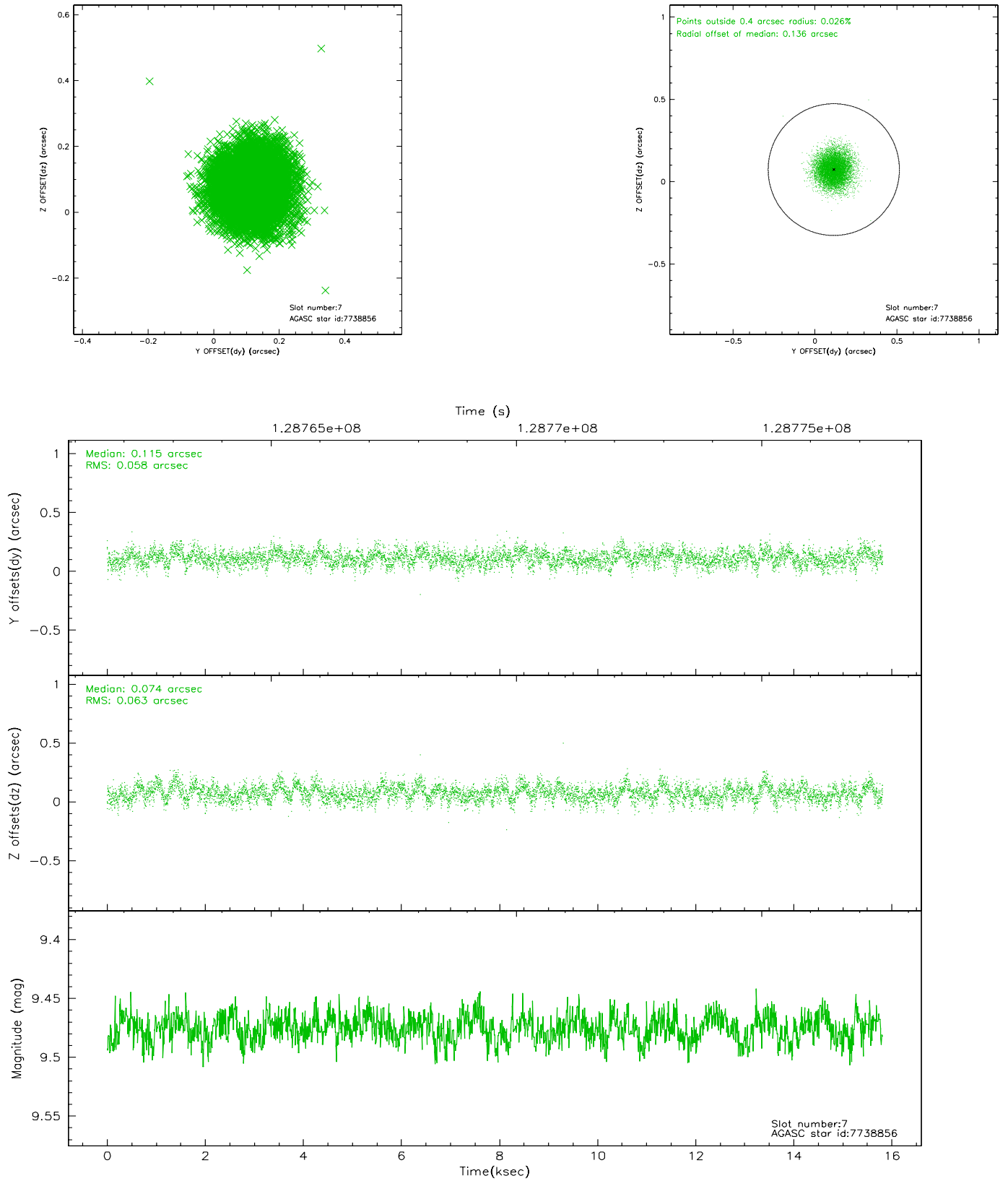
2.4.3 Slot 5



2.4.4 Slot 6

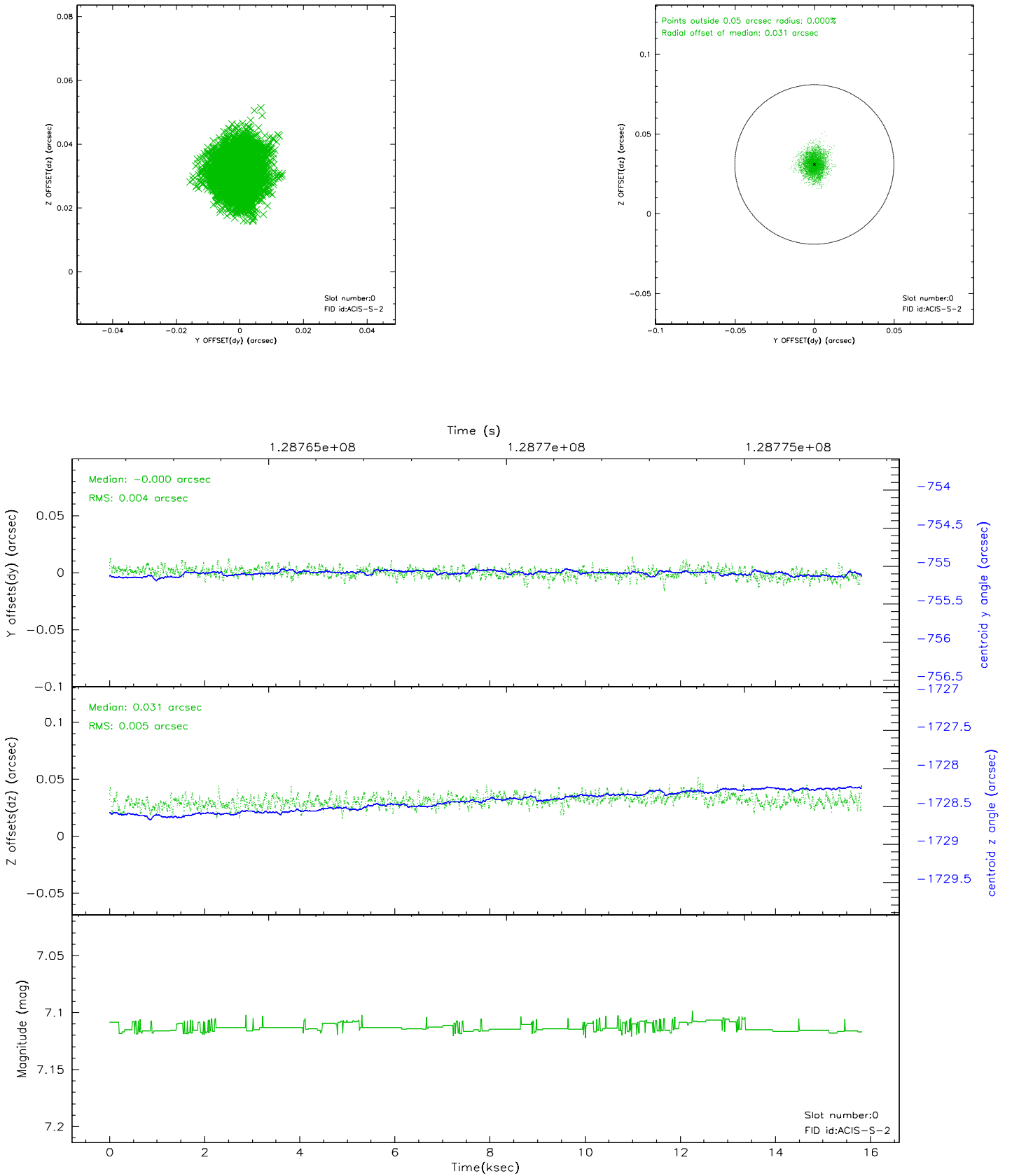


2.4.5 Slot 7

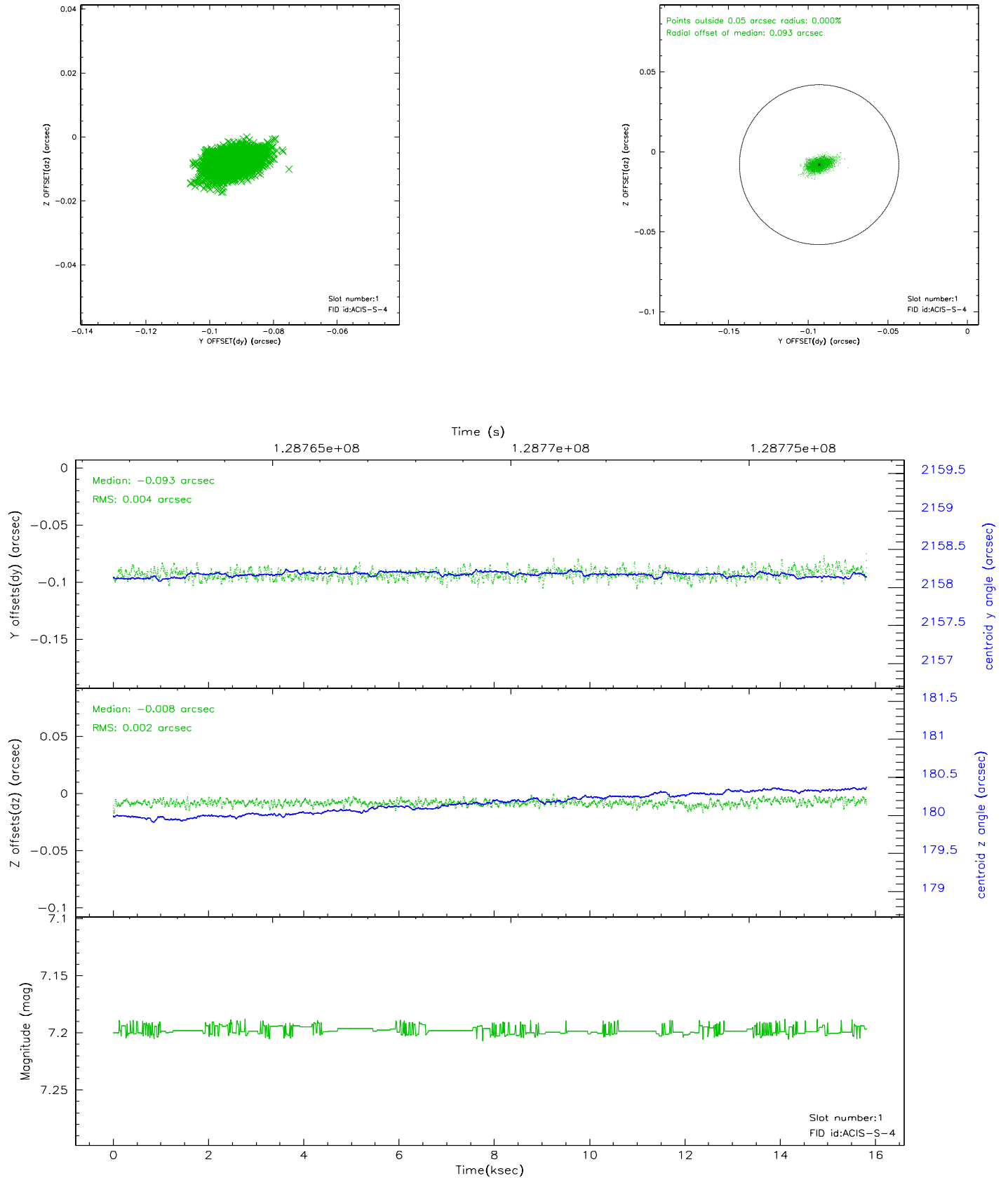


2.5 FID Slots

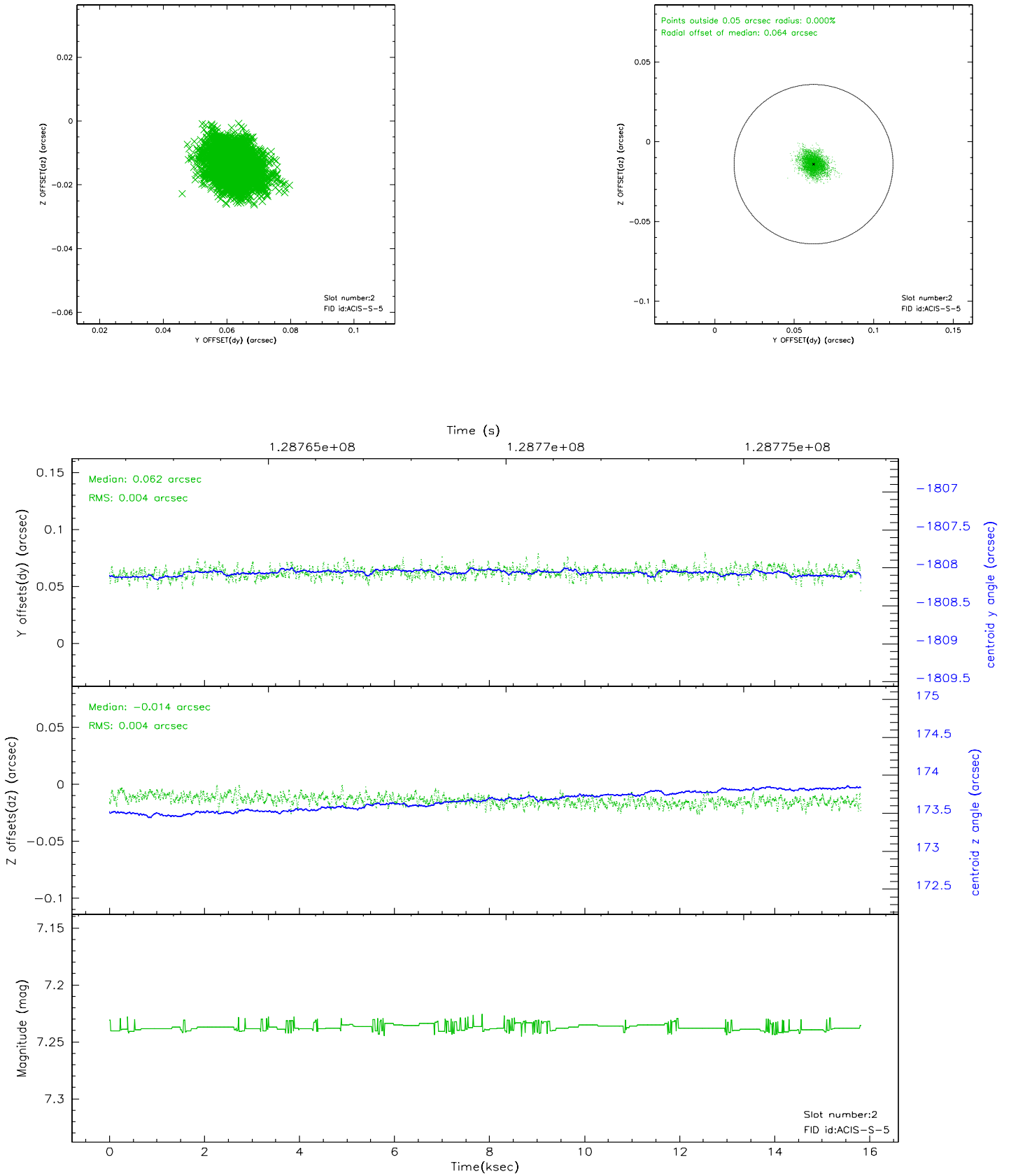
2.5.1 Slot 0



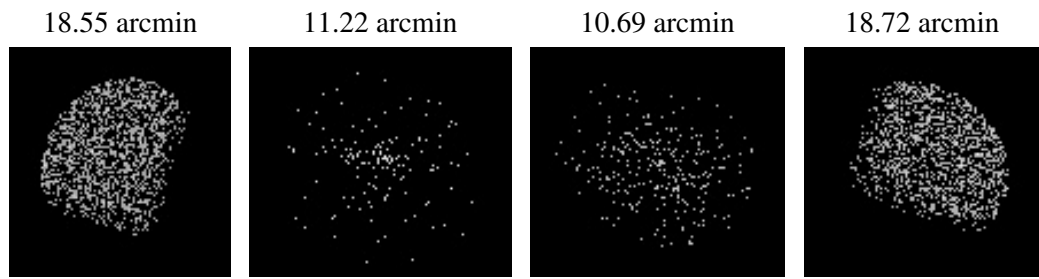
2.5.2 Slot 1



2.5.3 Slot 2



3 Point Sources



A Summary

A.1 Status

V&V Scientist	Jen Lauer
V&V Date (YYYY-MM-DD)	2006.08.30
V&V Edition	1
V&V Disposition and Status	OK
V&V Charge Time	14.963

A.2 Comments