

V&V Reference Report

L2 ASCDS Version : 7.6.9

Observation 2976 - L2 Version 001
Chandra X-Ray Center

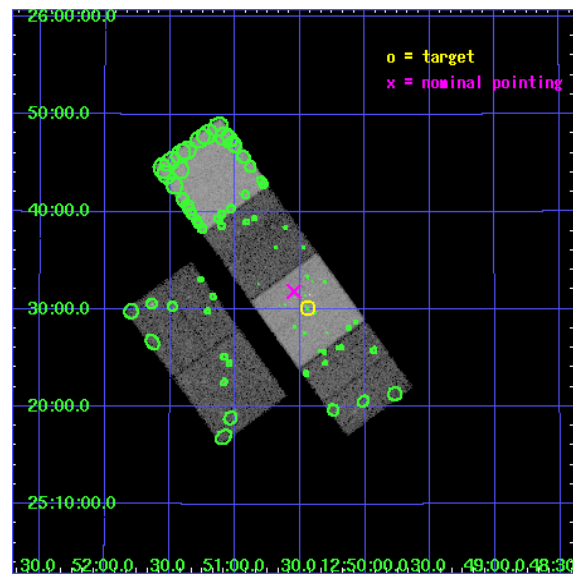
L2 Processing Date : Oct 13 2006

Contents

1	Front	2
2	OBI	3
2.1	OBI	3
2.1.1	Images	3
2.1.2	Bias	3
2.1.3	Parameters	4
2.1.4	Events	4
2.2	Compared Parameters	5
2.3	Aspect	6
2.4	Star Slots	9
2.4.1	Slot 3	9
2.4.2	Slot 4	10
2.4.3	Slot 5	11
2.4.4	Slot 6	12
2.4.5	Slot 7	13
2.5	FID Slots	14
2.5.1	Slot 0	14
2.5.2	Slot 1	15
2.5.3	Slot 2	16
3	Point Sources	17
A	Summary	18
A.1	Status	18
A.2	Comments	18

1 Front

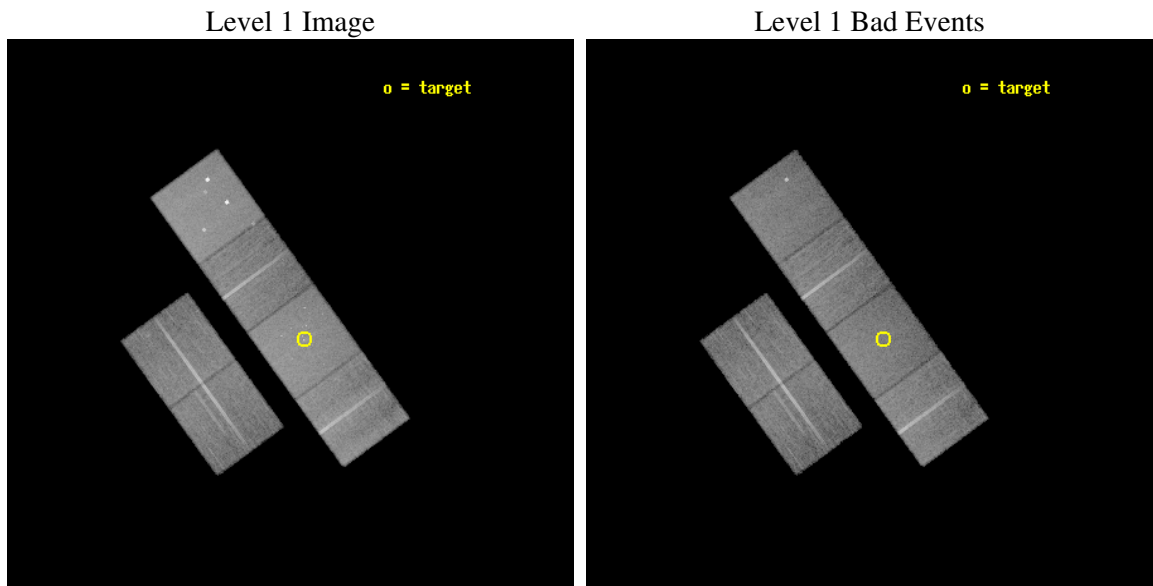
seq_num	700415
obs_id	2976
title	FOLLOW-UPS TO THE LLAGN SURVEY
observer	Professor Gordon Garmire
object	NGC 4725 ALTERNATE
dtcycle	0
cycle	P
ra_targ	192.610833
dec_targ	25.501667
ra_nom	192.63672958944
dec_nom	25.530811482564
roll_nom	53.988061807119
revision	2
ontime	24959.999907017
livetime	24643.941359087
ontime2	24959.999907017
ontime3	24959.999907017
ontime5	24959.999907017
ontime6	24956.758946747
ontime7	24959.999907017
ontime8	24959.999907017
l2events	243694



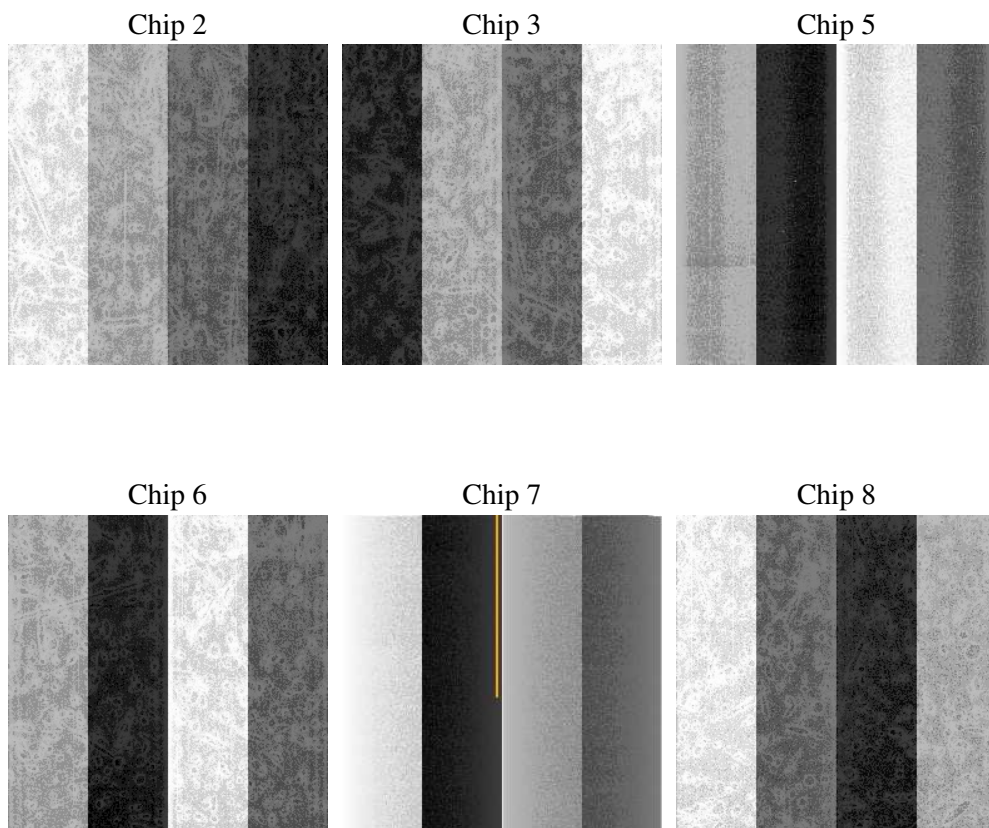
2 OBI

2.1 OBI

2.1.1 Images



2.1.2 Bias



2.1.3 Parameters

obi_num	0
ascdsver	7.6.9
caldsver	3.2.3
date	2006-10-13T18:05:53
revision	2

sched_exp_time	25000.000000
ontime	24965.424671233
ontime2	24965.424671233
ontime3	24965.424671233
ontime5	24965.424671233
ontime6	24962.183710963
ontime7	24965.424671233
ontime8	24968.665691346
l1events	1130523

2.1.4 Events

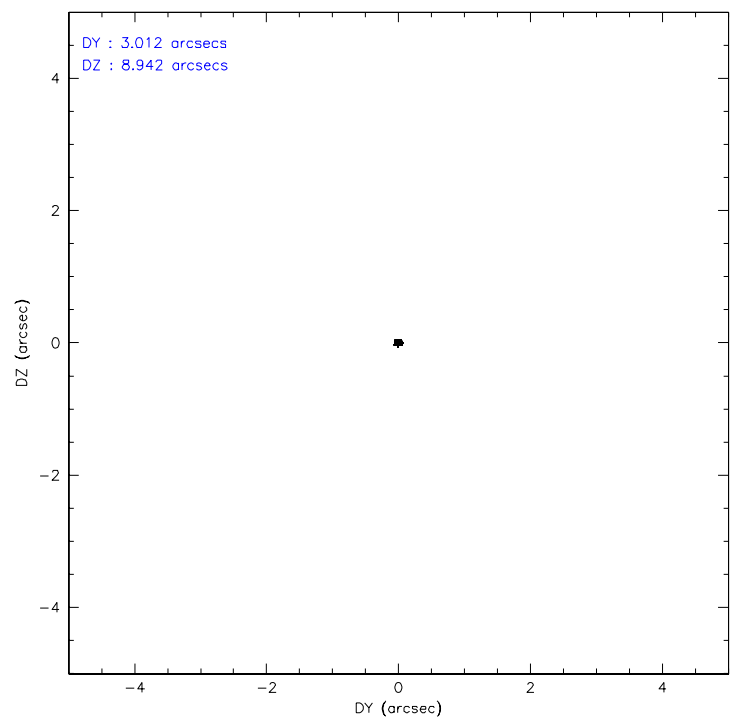
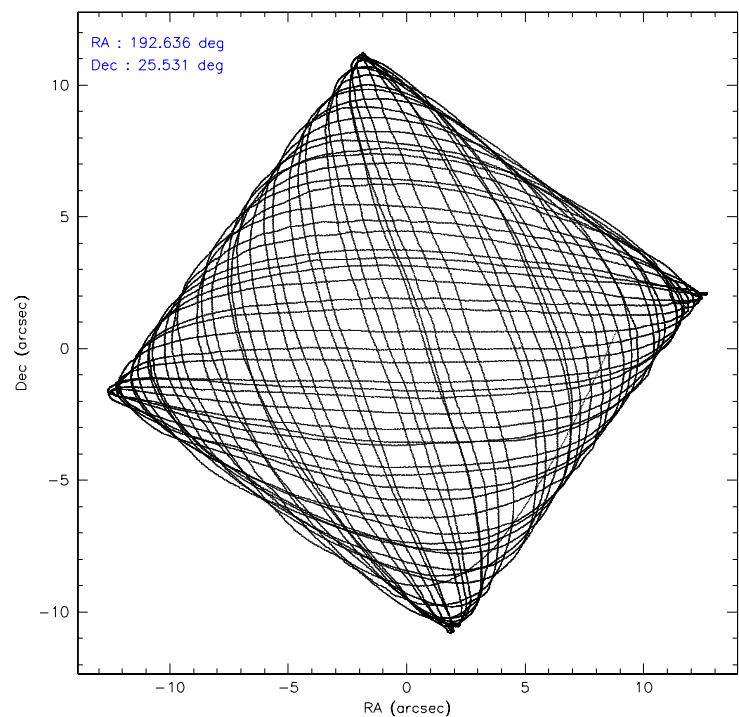
	ccd 2	ccd 3	ccd 5	ccd 6	ccd 7	ccd 8
level 1 events	161684	153523	238757	164041	213366	199152
rejected events	142737	135395	129335	145471	130118	158077
rejected %	88%	88%	54%	88%	60%	79%

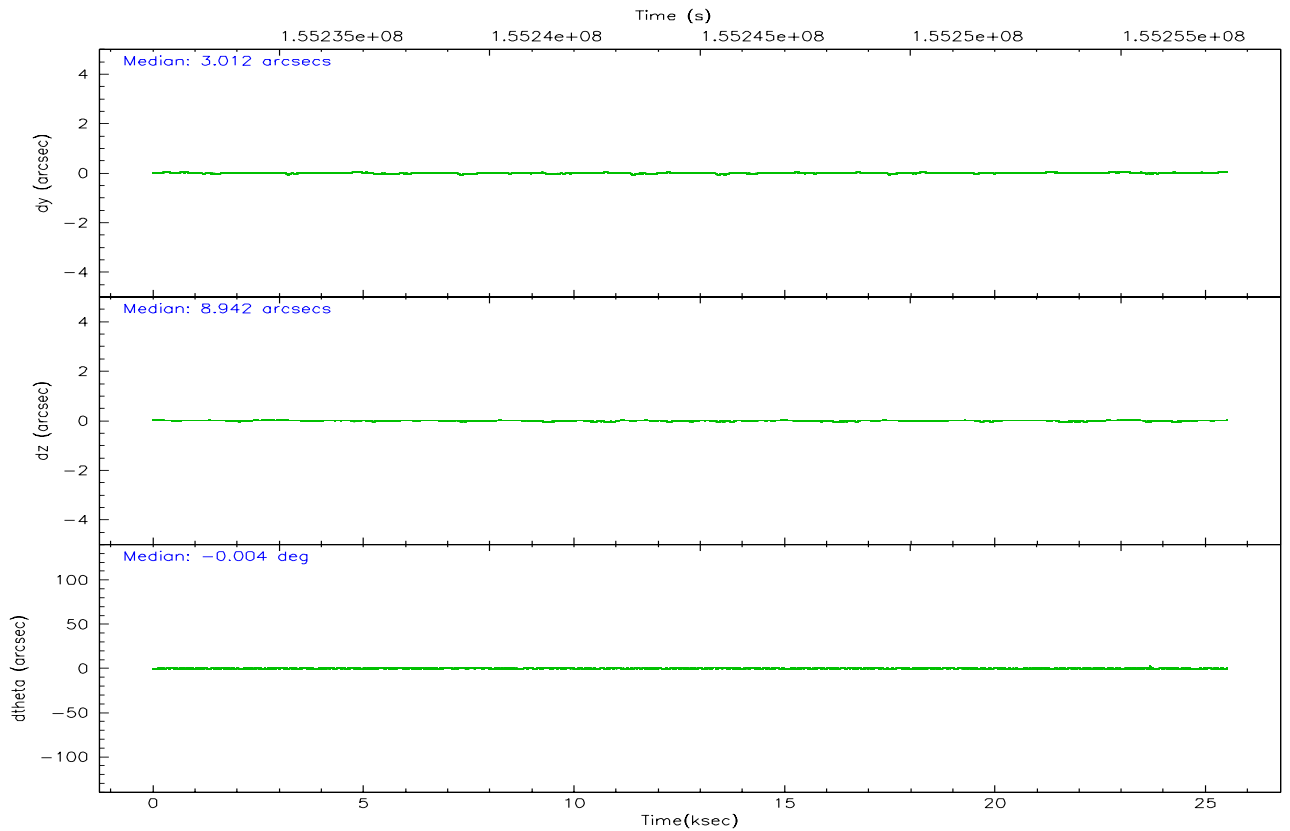
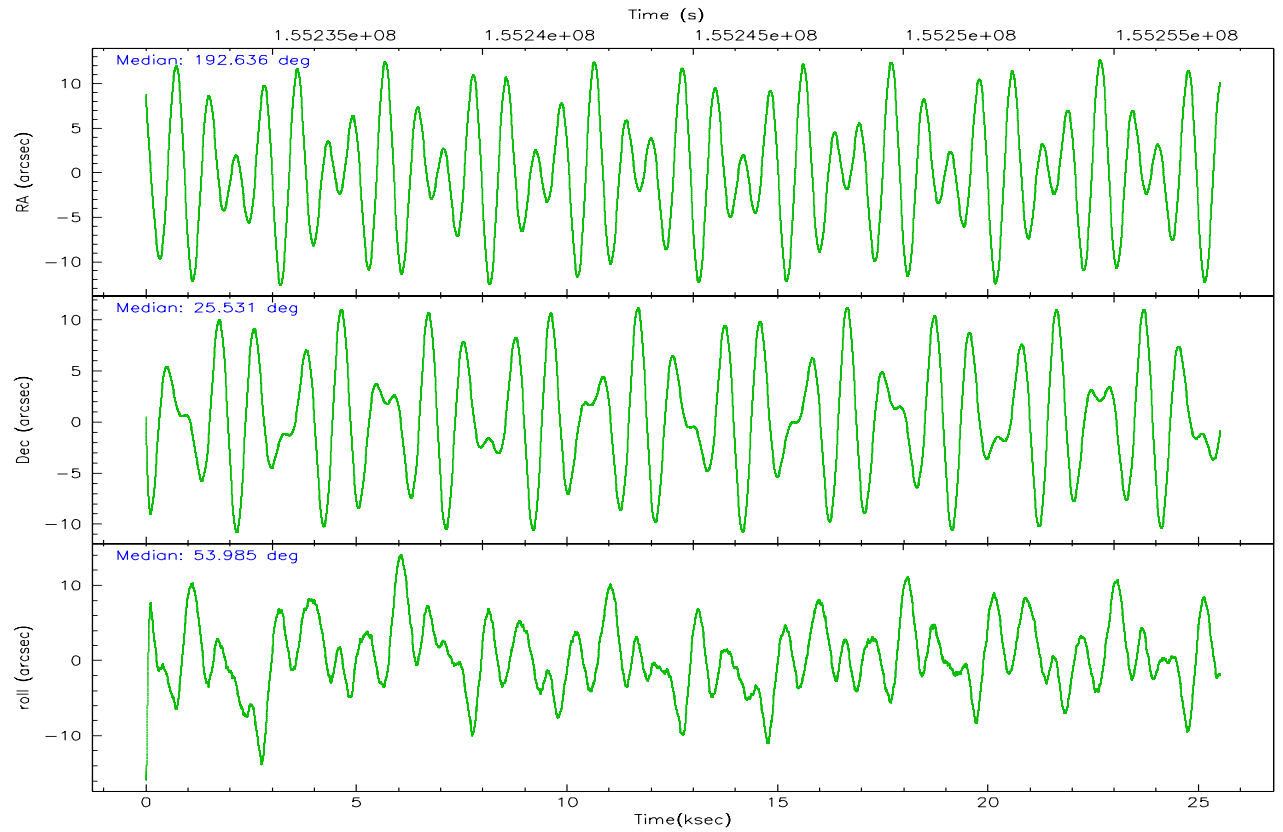
	ccd 2	ccd 3	ccd 5	ccd 6	ccd 7	ccd 8
grade 0 events	8604	8049	15795	7454	6160	12829
	5%	5%	6%	4%	2%	6%
grade 1 events	88	89	1560	72	143	141
	0%	0%	0%	0%	0%	0%
grade 2 events	3788	3384	31493	3827	20417	8959
	2%	2%	13%	2%	9%	4%
grade 3 events	1750	1773	2325	1798	4485	4448
	1%	1%	0%	1%	2%	2%
grade 4 events	1838	1797	2376	1817	4464	4029
	1%	1%	0%	1%	2%	2%
grade 5 events	6119	6831	11302	7092	14023	8999
	3%	4%	4%	4%	6%	4%
grade 6 events	2974	3125	57448	3675	47742	10817
	1%	2%	24%	2%	22%	5%
grade 7 events	136523	128475	116458	138306	115932	148930
	84%	83%	48%	84%	54%	74%

2.2 Compared Parameters

Parameter	Planned	Actual	Parameter	Planned	Actual
Instrument	ACIS	ACIS	Obspar format version number	6	6
Detector	ACIS-235678	ACIS-235678	Obspar file type	PREDICTED	ACTUAL
Grating	NONE	NONE	Obspar update status	NONE	UPDATED
Data mode	FAINT	FAINT	Number of optional ACIS chips dropped	0	0
Observation mode	POINTING	POINTING	On-chip summing requested	N	N
Pointing RA	192.633997	192.6367295894398	Subarray requested	NONE	NONE
Pointing Dec	25.503724	25.53081148256383	Alternating exposures requested	N	N
Pointing Roll	53.832626	53.98806180711882	Primary exposure time	0.000000	3.2
SIM focus pos (mm)	-0.684267	-0.6828225247311905			
SIM defocus (mm)	0	0.001444936568705701			
SIM translation stage pos (mm)	-190.132523	-190.1400660498719			
SIM translation stage offset (mm)	0	0.00754346686406393			
Observation start time	155232520.184000	155231391.56147			
Observation start date	2002-12-02T16:07:36	2002-12-02T15:49:51			
Observation end time	155257520.184000	155257985.70008			
Observation end date	2002-12-02T23:04:16	2002-12-02T23:13:05			
Read mode	TIMED	TIMED			

2.3 Aspect



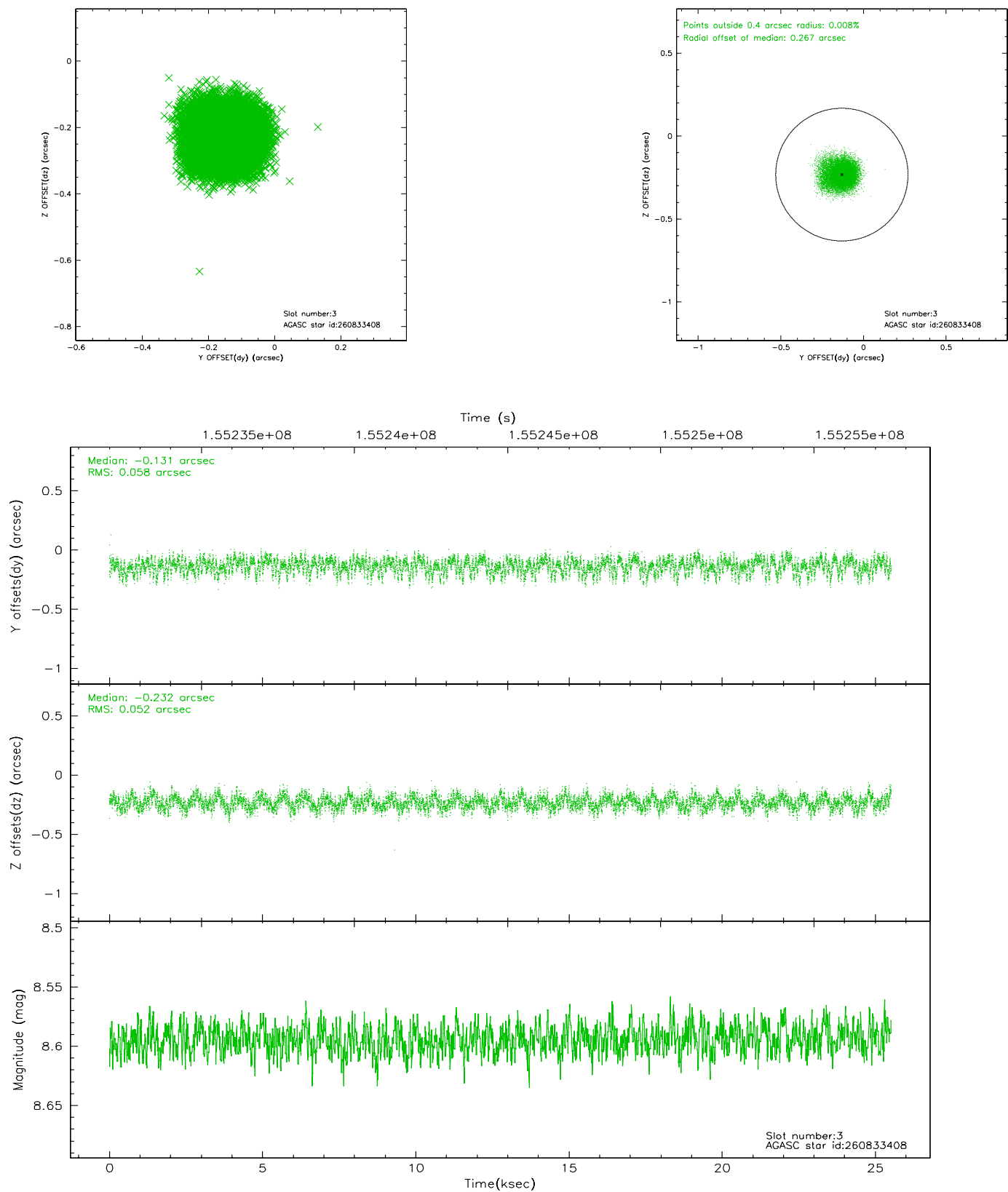


Slot Statistics

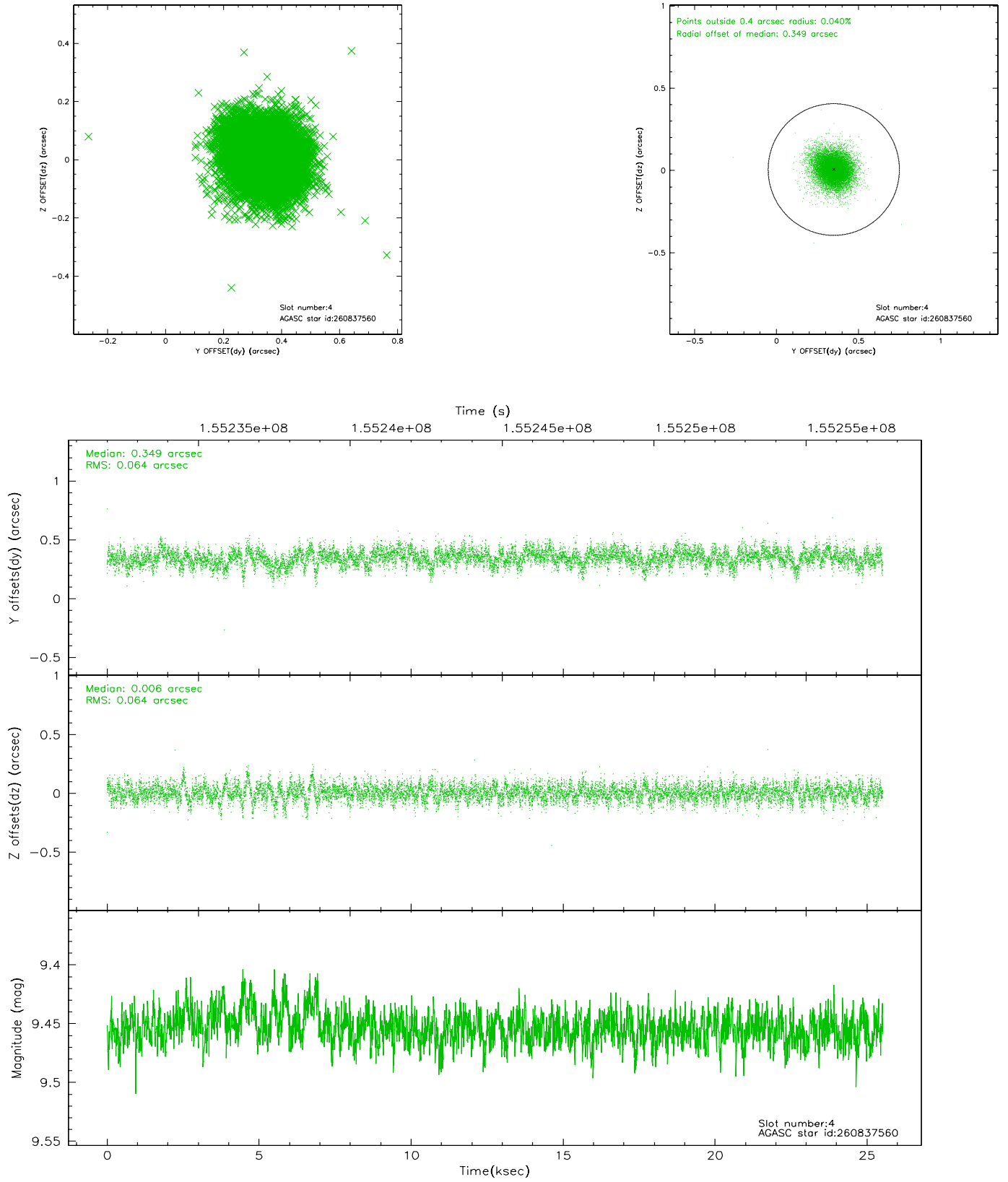
slot	status	id	mag	n_pts	med_dy	med_dz	dr1	dr2	ra	dec	mean_y	mean_z
0	FID	ACIS-S-2	7.11	6223	-0.014	0.013	0.006	0.010	0.000000	0.000000	-755.67	-1730.15
1	FID	ACIS-S-4	7.20	6224	-0.035	0.003	0.005	0.009	0.000000	0.000000	2157.54	178.21
2	FID	ACIS-S-5	7.24	6224	0.018	-0.008	0.006	0.011	0.000000	0.000000	-1808.33	172.00
3	GUIDE	260833408	8.59	12445	-0.131	-0.232	0.083	0.134	192.386444	26.221912	1616.47	2171.02
4	GUIDE	260837560	9.45	12418	0.349	0.006	0.095	0.161	192.074485	25.135976	-2140.78	692.76
5	GUIDE	261229144	8.99	12440	0.033	0.128	0.072	0.117	193.048396	25.373494	419.29	-1363.89
6	GUIDE	261233568	9.89	12149	-0.132	0.001	0.123	0.204	192.638833	26.205858	2050.06	1478.42
7	GUIDE	261233896	9.91	12438	-0.114	0.101	0.144	0.235	192.960418	25.639539	1021.77	-566.17

2.4 Star Slots

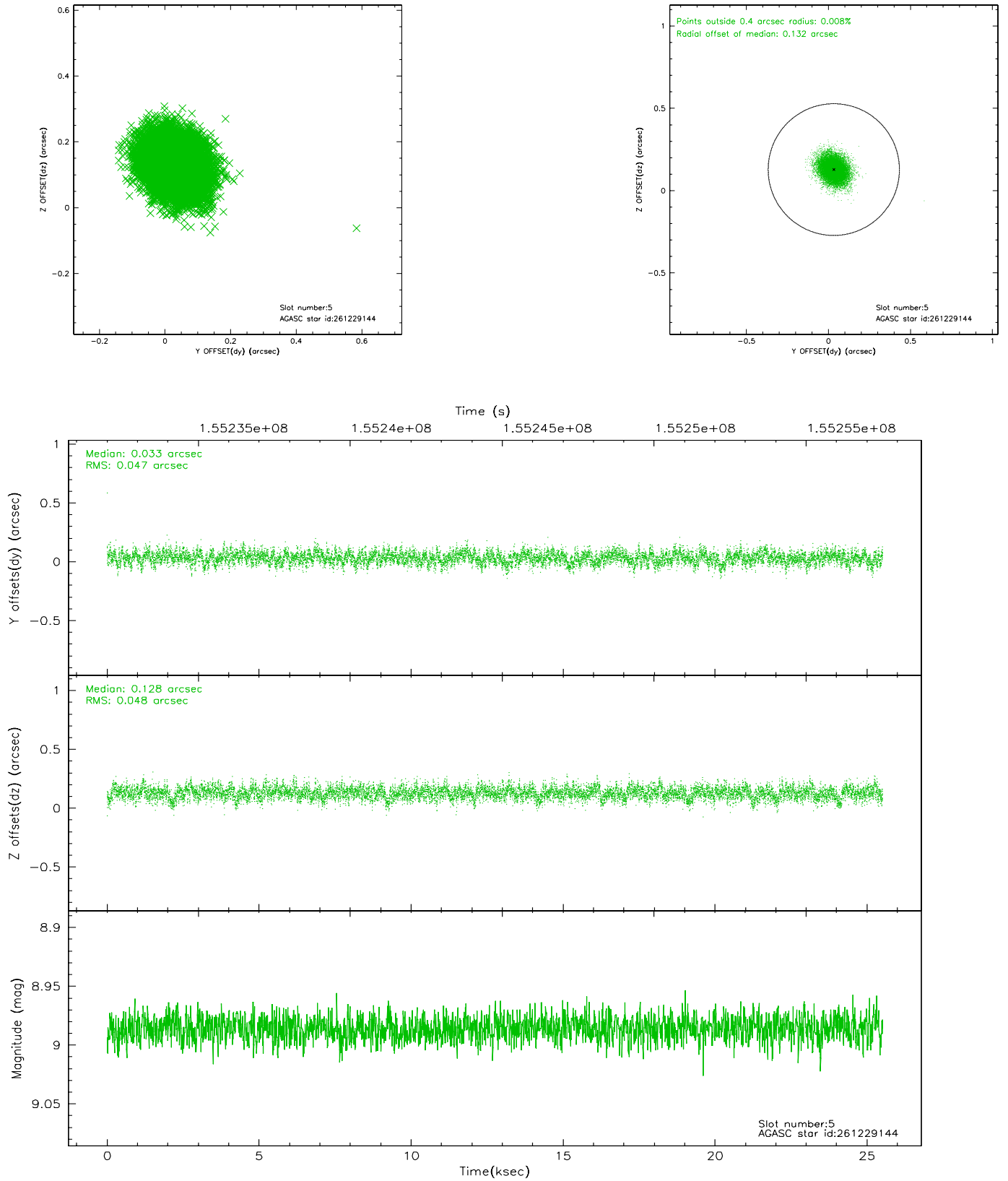
2.4.1 Slot 3



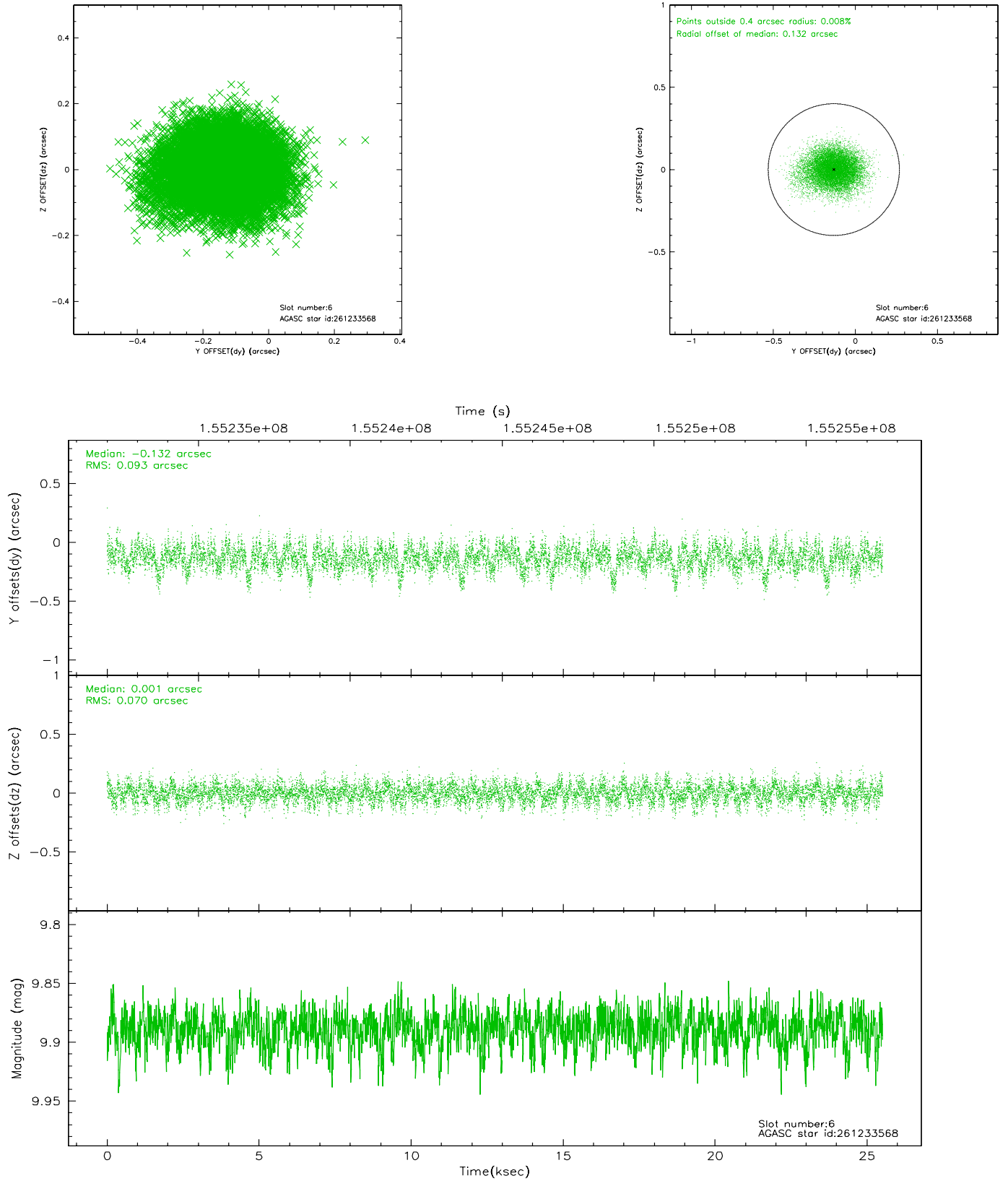
2.4.2 Slot 4



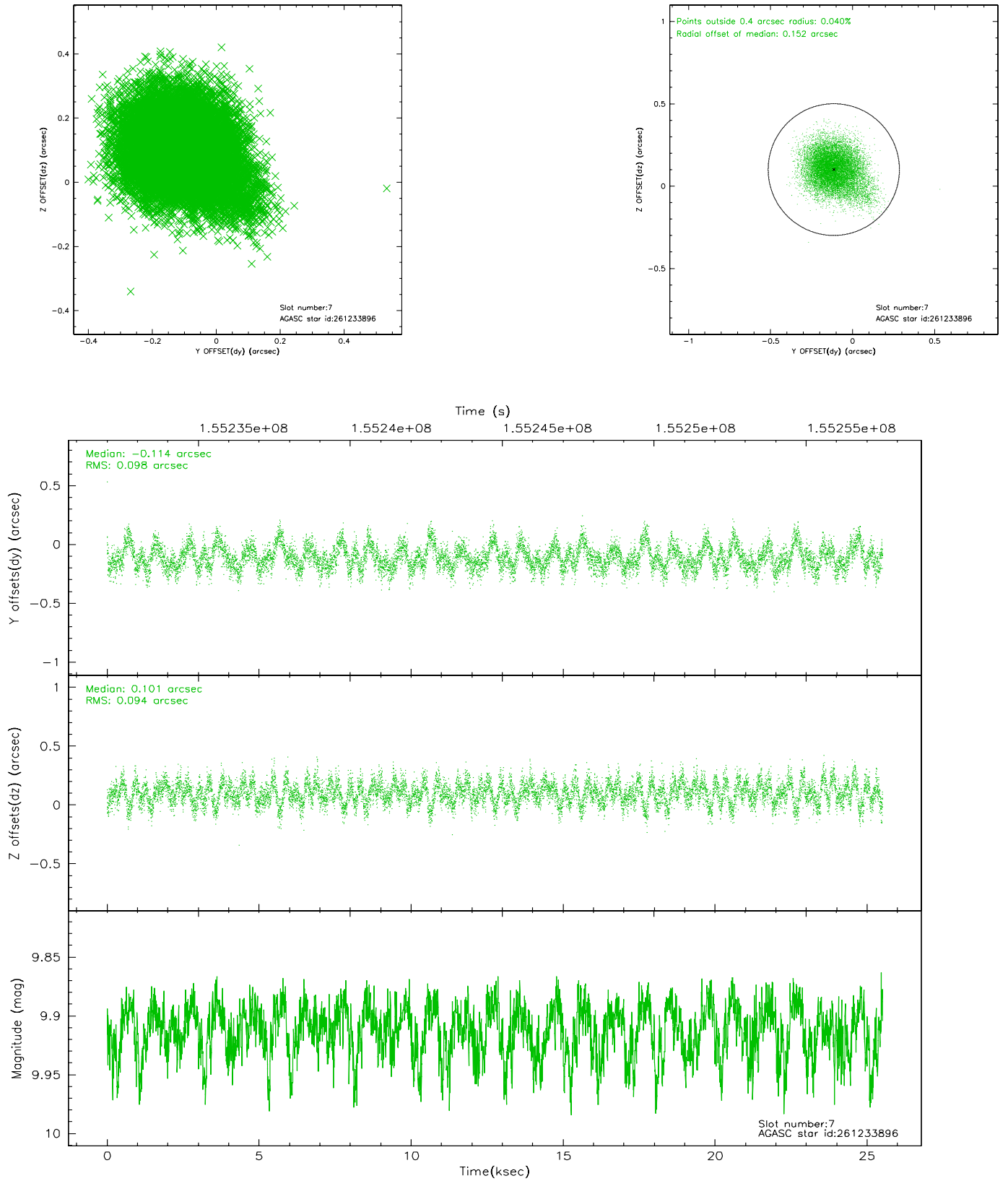
2.4.3 Slot 5



2.4.4 Slot 6

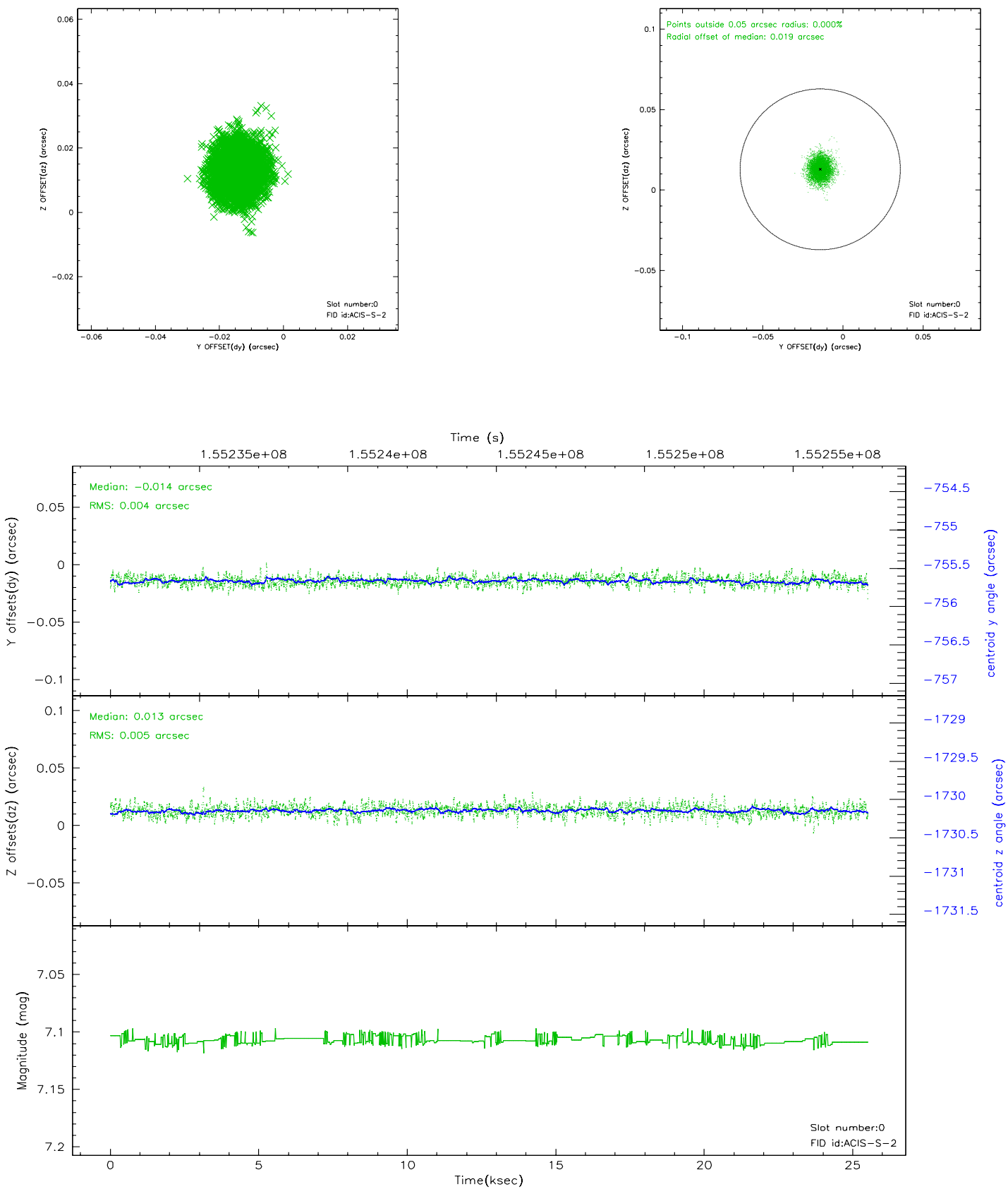


2.4.5 Slot 7

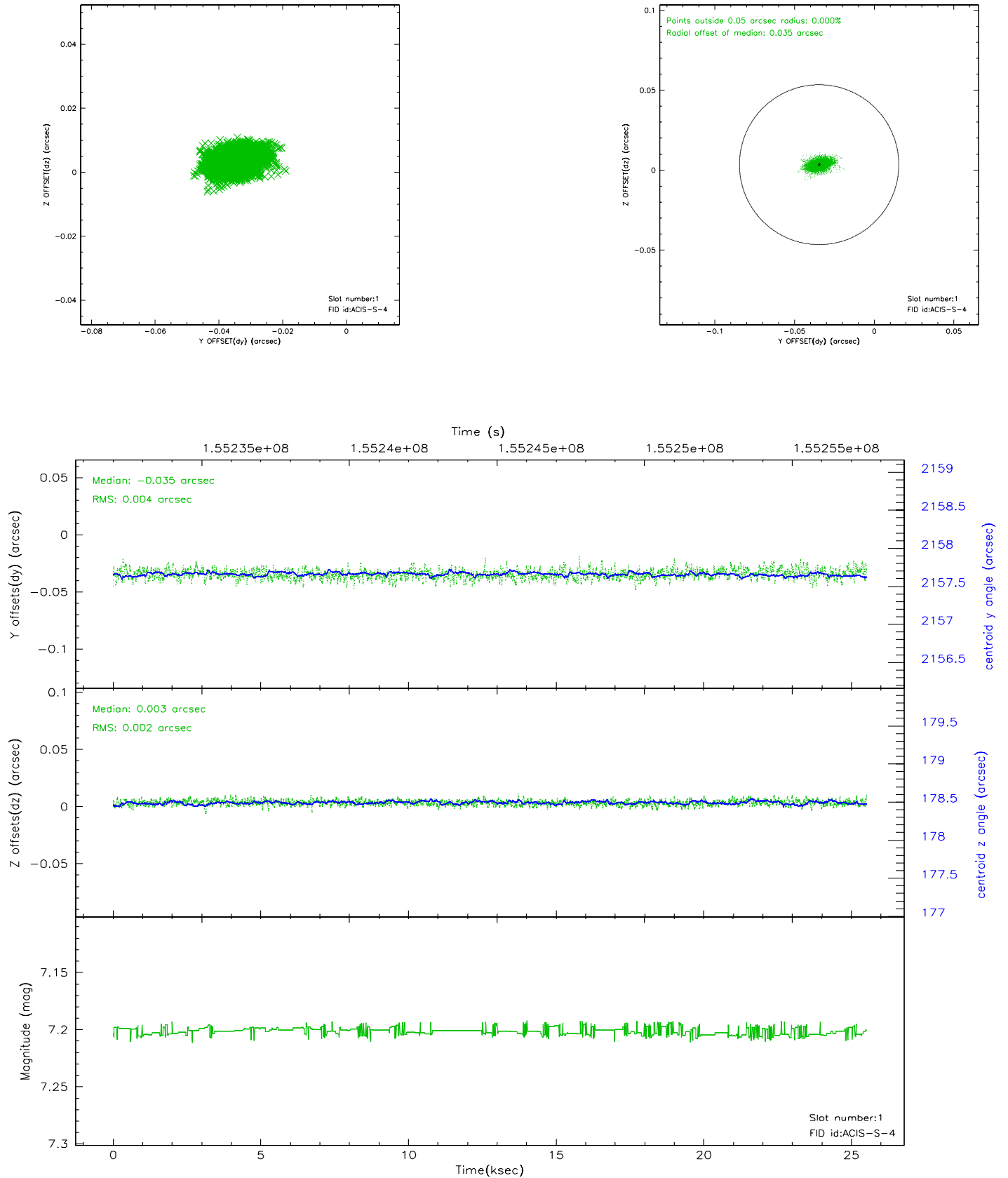


2.5 FID Slots

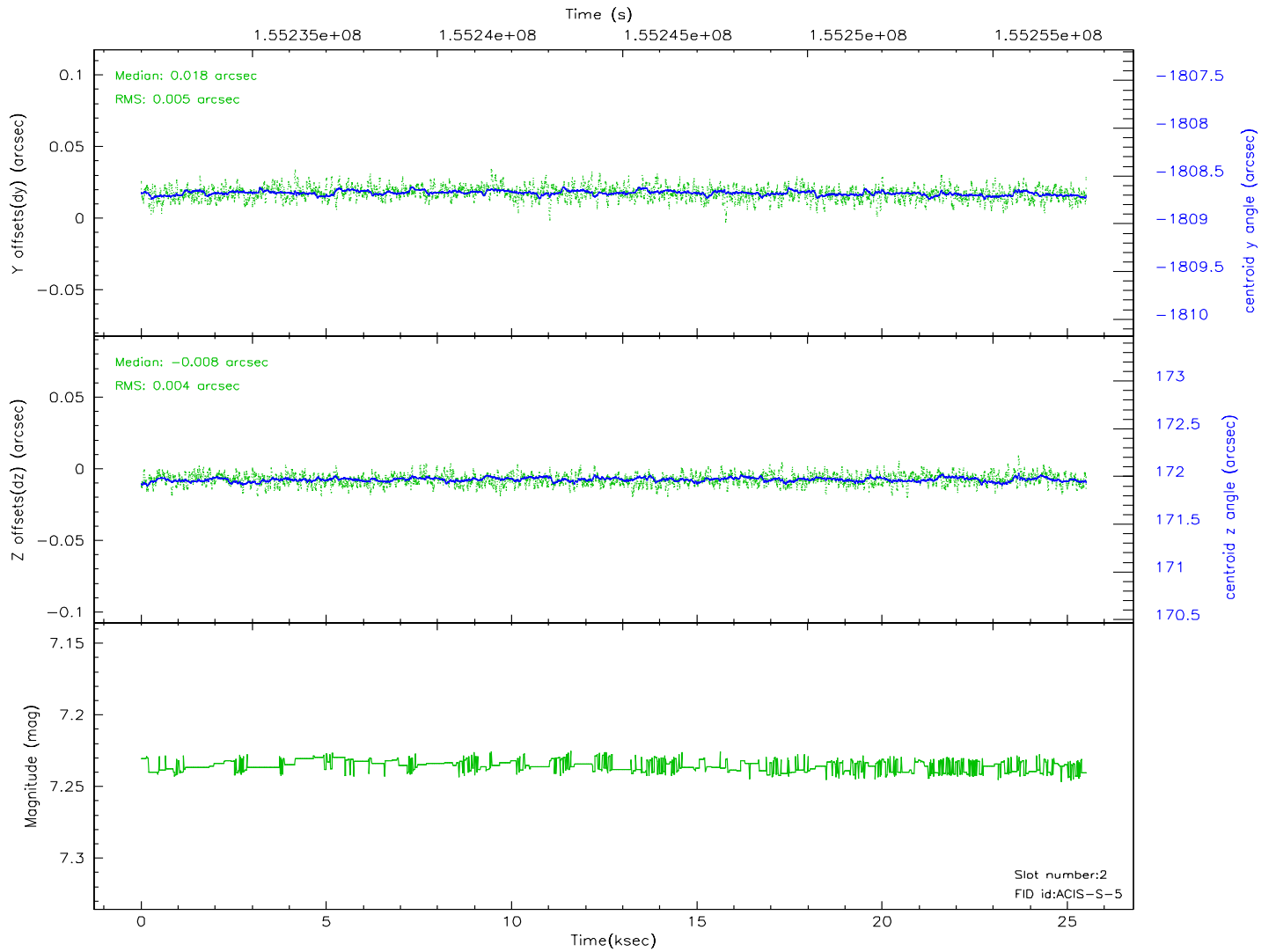
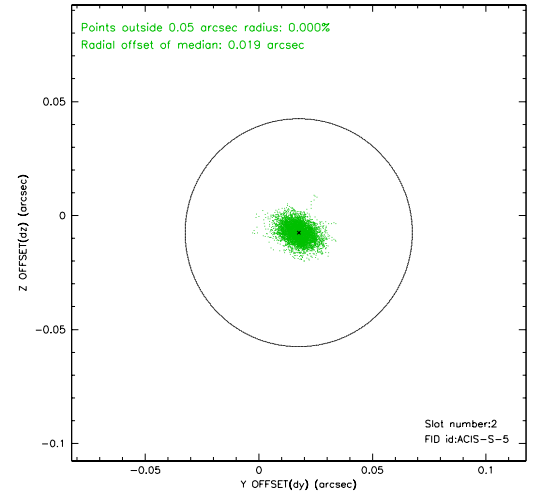
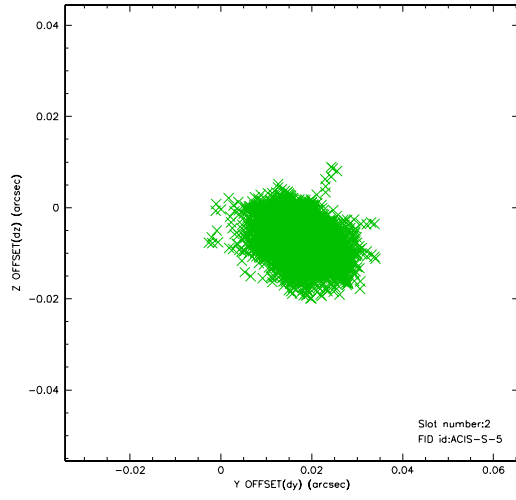
2.5.1 Slot 0



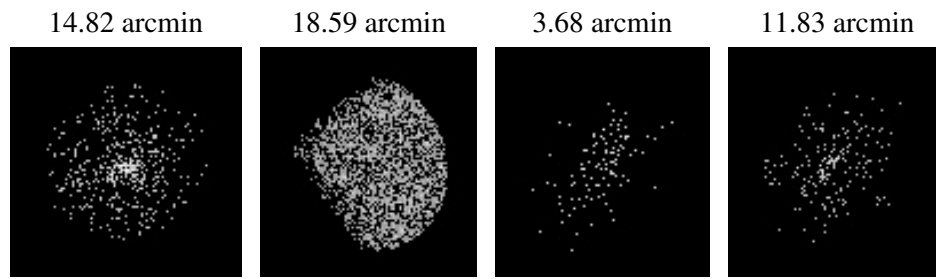
2.5.2 Slot 1



2.5.3 Slot 2



3 Point Sources



A Summary

A.1 Status

V&V Scientist	Beth Sundheim
V&V Date (YYYY-MM-DD)	2006.10.13
V&V Edition	1
V&V Disposition and Status	OK
V&V Charge Time	24.96

A.2 Comments