

V&V Reference Report

L2 ASCDS Version : 7.6.9

Observation 2974 - L2 Version 001
Chandra X-Ray Center

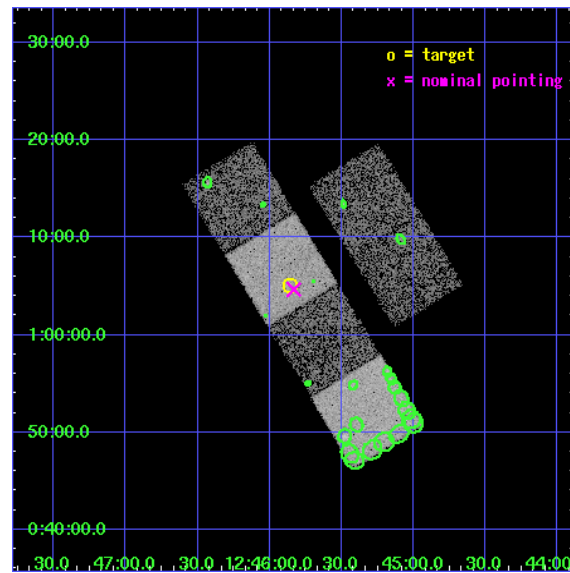
L2 Processing Date : Sep 14 2006

Contents

1	Front	2
2	OBI	3
2.1	OBI	3
2.1.1	Images	3
2.1.2	Bias	3
2.1.3	Parameters	4
2.1.4	Events	4
2.2	Compared Parameters	5
2.3	Aspect	6
2.4	Star Slots	9
2.4.1	Slot 3	9
2.4.2	Slot 4	10
2.4.3	Slot 5	11
2.4.4	Slot 6	12
2.4.5	Slot 7	13
2.5	FID Slots	14
2.5.1	Slot 0	14
2.5.2	Slot 1	15
2.5.3	Slot 2	16
3	Point Sources	17
A	Summary	18
A.1	Status	18
A.2	Comments	18

1 Front

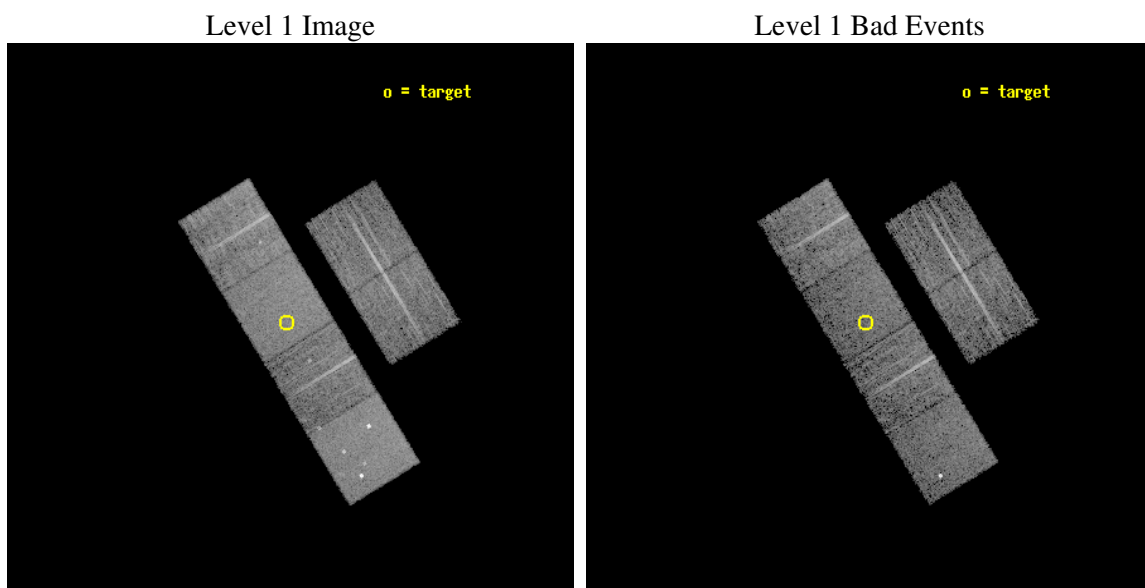
seq_num	700413
obs_id	2974
title	A COMPLETE X-RAY SAMPLE OF BROAD ABSORPTION LINE QSOS
observer	Professor Gordon Garmire
object	LBQS 1243+0121
dtcycle	0
cycle	P
ra_targ	191.464167
dec_targ	1.084444
ra_nom	191.45803972909
dec_nom	1.0776572830629
roll_nom	238.54897869982
revision	2
ontime	6751.9999748468
livetime	6666.502085599
ontime2	6751.9999748468
ontime3	6751.9999748468
ontime5	6751.9999748468
ontime6	6751.9999748468
ontime7	6751.9999748468
ontime8	6748.7590045929
l2events	67549



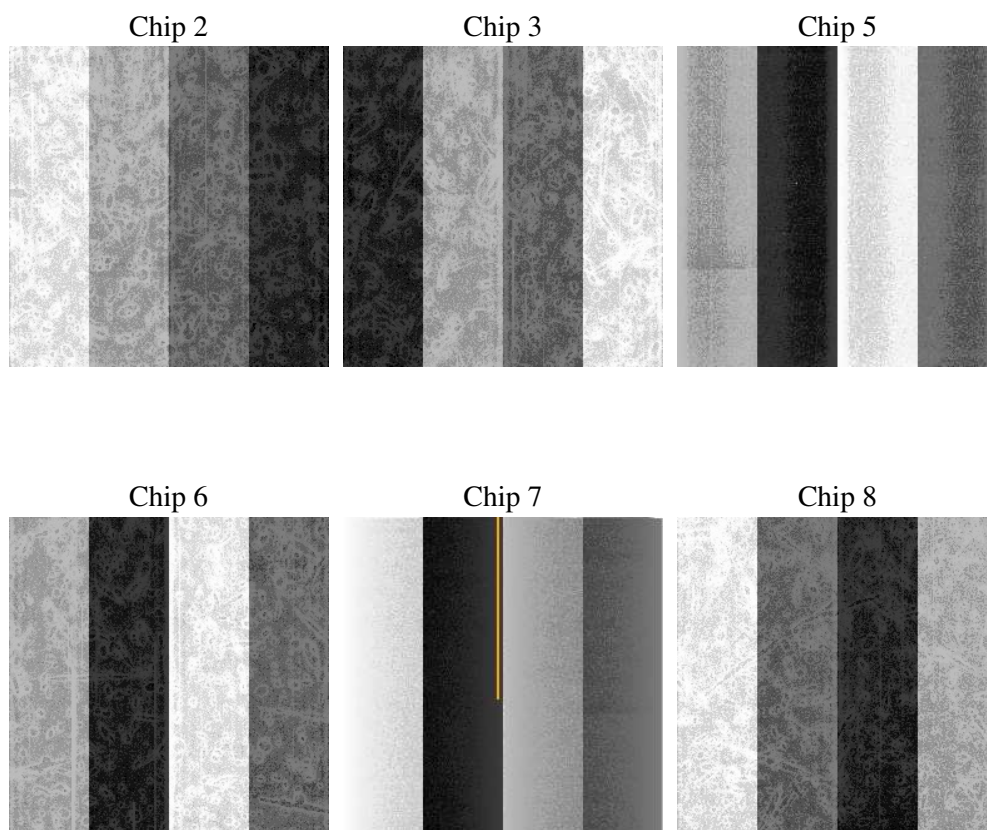
2 OBI

2.1 OBI

2.1.1 Images



2.1.2 Bias



2.1.3 Parameters

obi_num	0
ascdsver	7.6.9
caldsver	3.2.3
date	2006-09-15T00:31:19
revision	2

sched_exp_time	7000.000000
ontime	6757.4955651164
ontime2	6757.4955452085
ontime3	6760.7365652919
ontime5	6757.4955651164
ontime6	6757.4955651164
ontime7	6757.4955651164
ontime8	6757.495475471
l1events	320753

2.1.4 Events

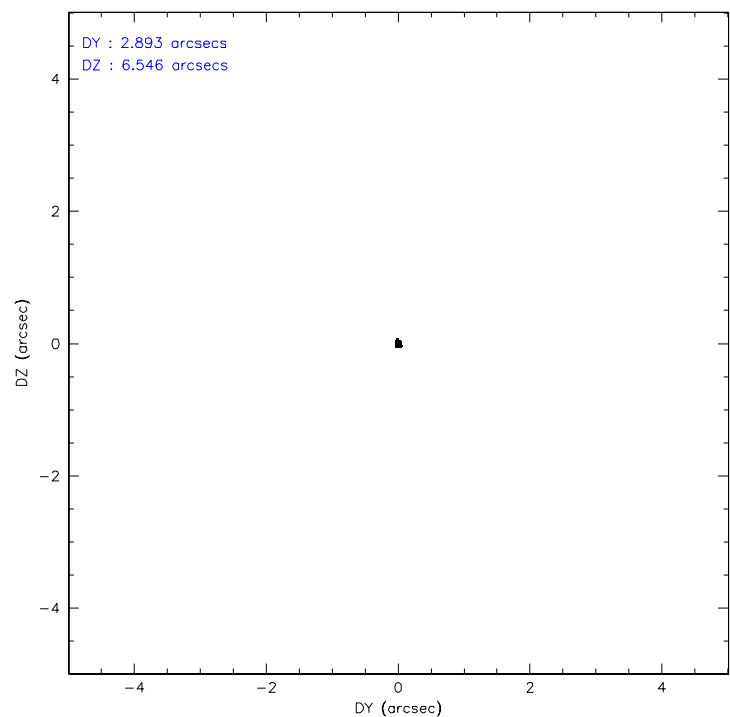
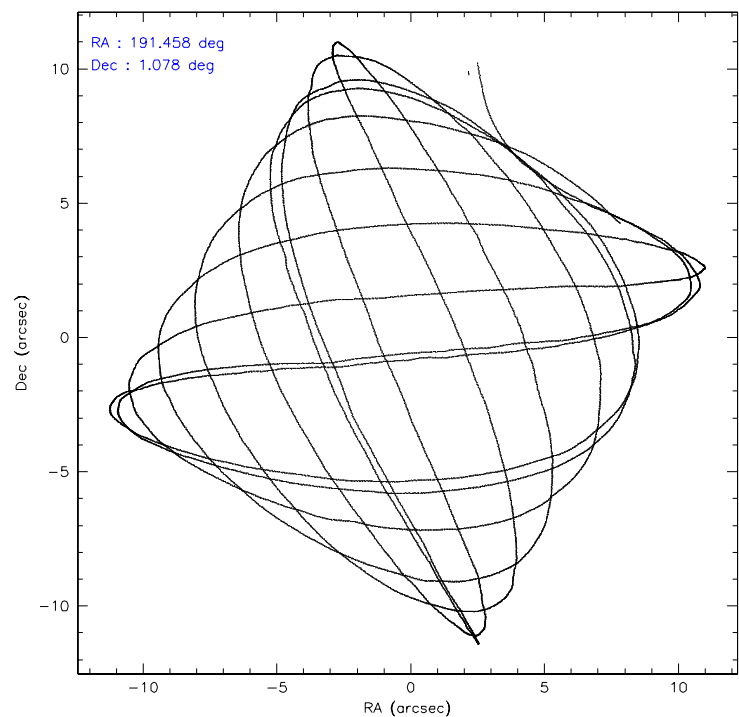
	ccd 2	ccd 3	ccd 5	ccd 6	ccd 7	ccd 8
level 1 events	45159	44429	67630	44694	58408	60433
rejected events	39998	39375	37143	39182	35512	47754
rejected %	88%	88%	54%	87%	60%	79%

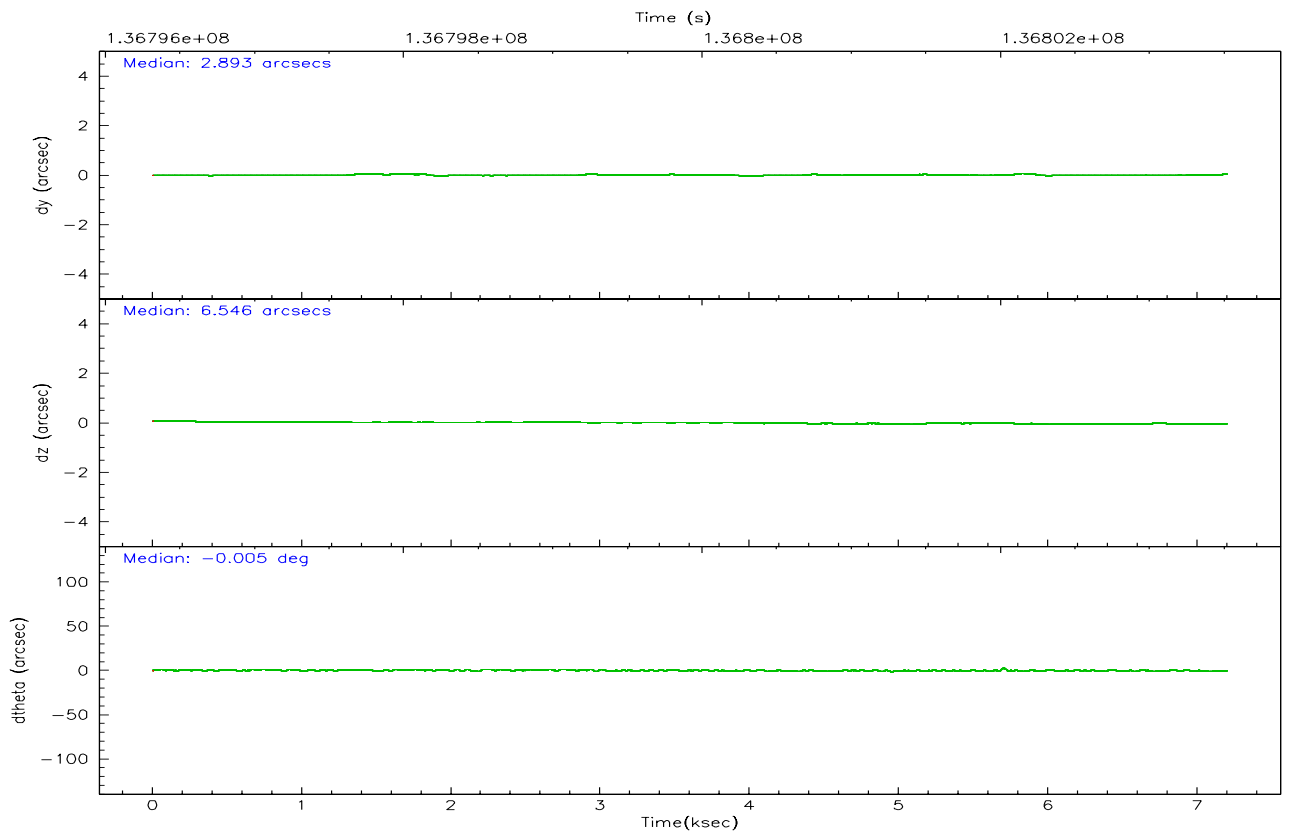
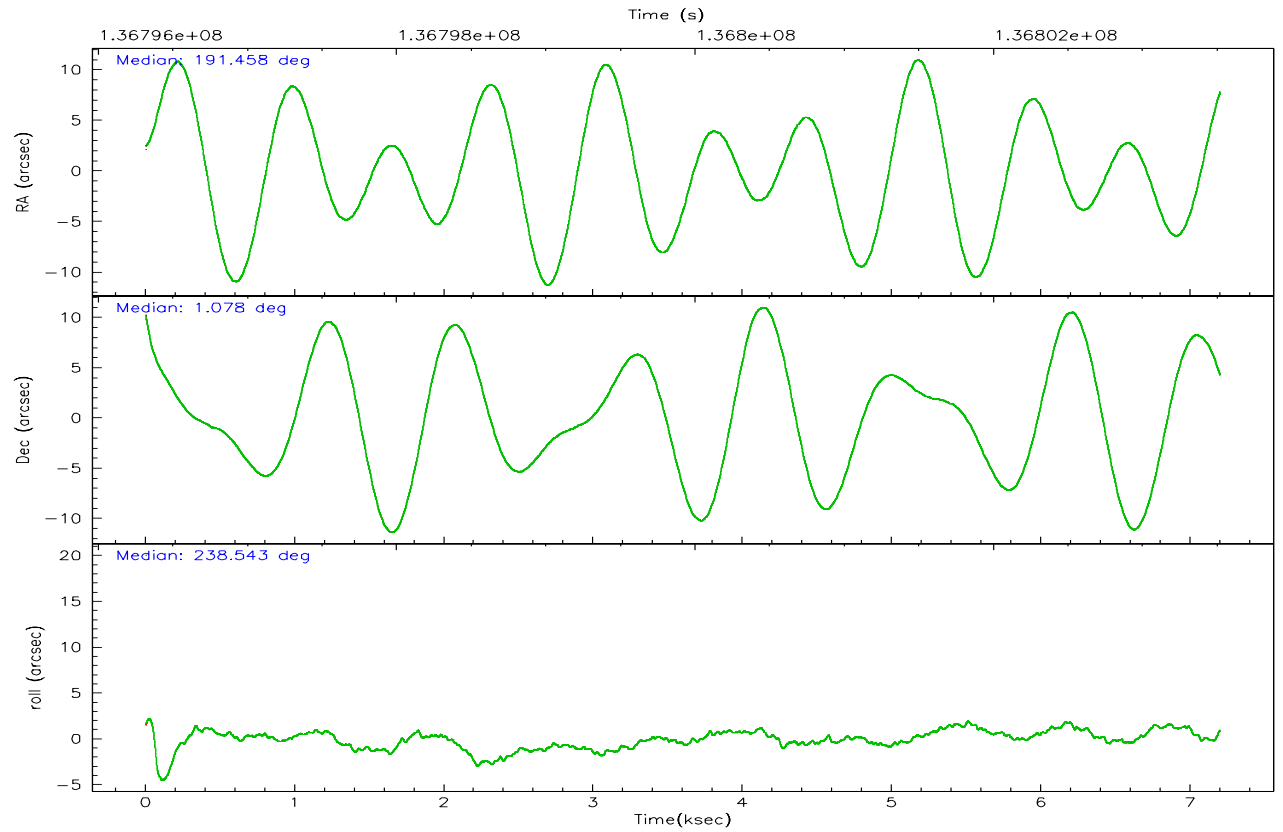
	ccd 2	ccd 3	ccd 5	ccd 6	ccd 7	ccd 8
grade 0 events	2263	2196	4233	2366	1551	3990
	5%	4%	6%	5%	2%	6%
grade 1 events	14	11	76	19	43	30
	0%	0%	0%	0%	0%	0%
grade 2 events	1083	1033	8853	1121	5796	2788
	2%	2%	13%	2%	9%	4%
grade 3 events	469	487	712	525	1209	1371
	1%	1%	1%	1%	2%	2%
grade 4 events	480	482	656	506	1213	1304
	1%	1%	0%	1%	2%	2%
grade 5 events	1615	1814	3387	1962	3808	2570
	3%	4%	5%	4%	6%	4%
grade 6 events	868	861	16050	995	13142	3232
	1%	1%	23%	2%	22%	5%
grade 7 events	38367	37545	33663	37200	31646	45148
	84%	84%	49%	83%	54%	74%

2.2 Compared Parameters

Parameter	Planned	Actual	Parameter	Planned	Actual
Instrument	ACIS	ACIS	Obspar format version number	6	6
Detector	ACIS-235678	ACIS-235678	Obspar file type	PREDICTED	ACTUAL
Grating	NONE	NONE	Obspar update status	NONE	UPDATED
Data mode	FAINT	FAINT	Number of optional ACIS chips dropped	0	0
Observation mode	POINTING	POINTING	On-chip summing requested	N	N
Pointing RA	191.458339	191.4580397290931	Subarray requested	NONE	NONE
Pointing Dec	1.104864	1.077657283062946	Alternating exposures requested	N	N
Pointing Roll	238.392337	238.5489786998166	Primary exposure time	0.000000	3.2
SIM focus pos (mm)	-0.684267	-0.6828225247311905			
SIM defocus (mm)	0	0.001444936568705701			
SIM translation stage pos (mm)	-190.132523	-190.1425803651734			
SIM translation stage offset (mm)	0	0.01005778216563158			
Observation start time	136796523.184000	136795864.8267			
Observation start date	2002-05-03T07:00:59	2002-05-03T06:51:04			
Observation end time	136803523.184000	136804301.60205			
Observation end date	2002-05-03T08:57:39	2002-05-03T09:11:41			
Read mode	TIMED	TIMED			

2.3 Aspect



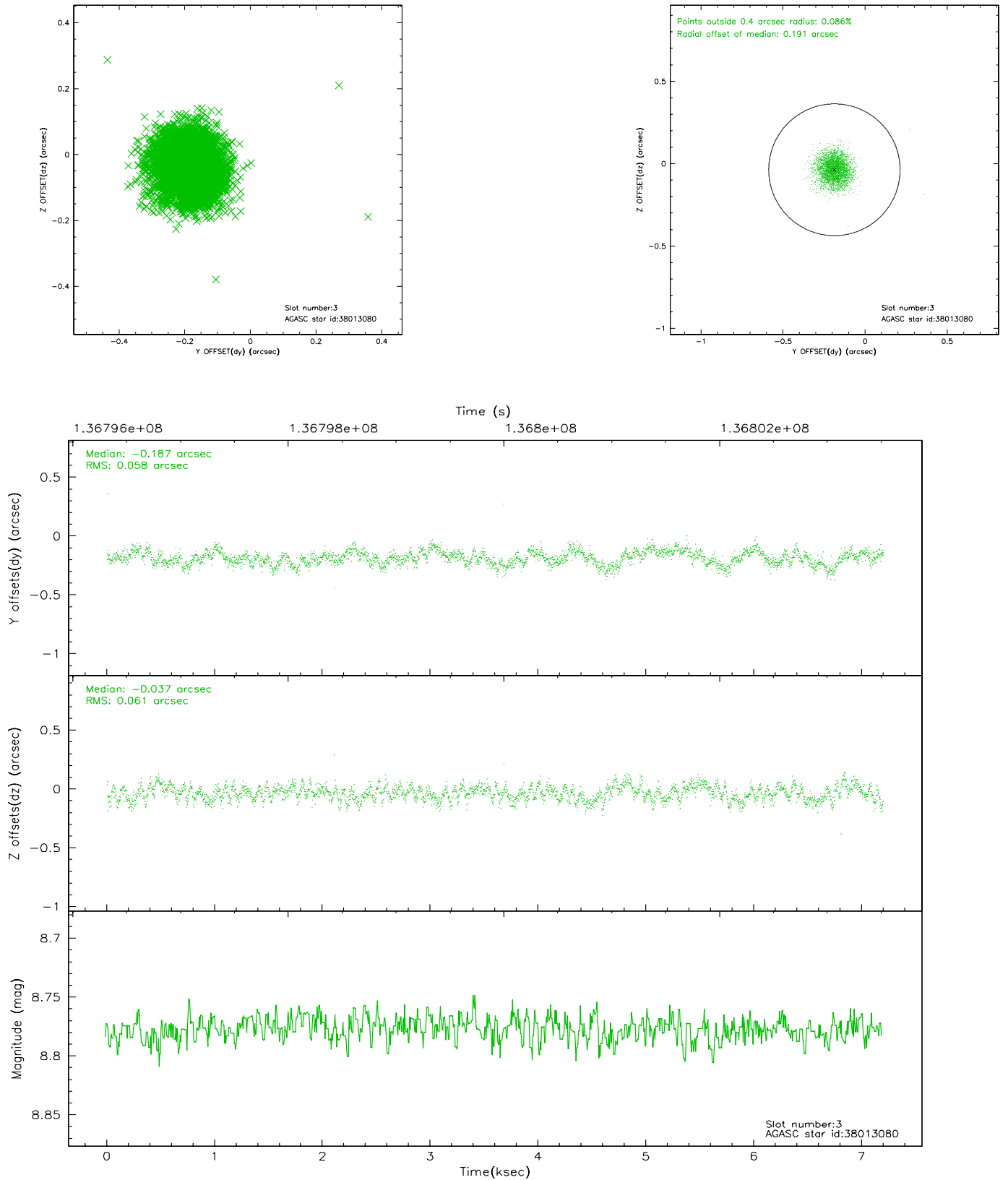


Slot Statistics

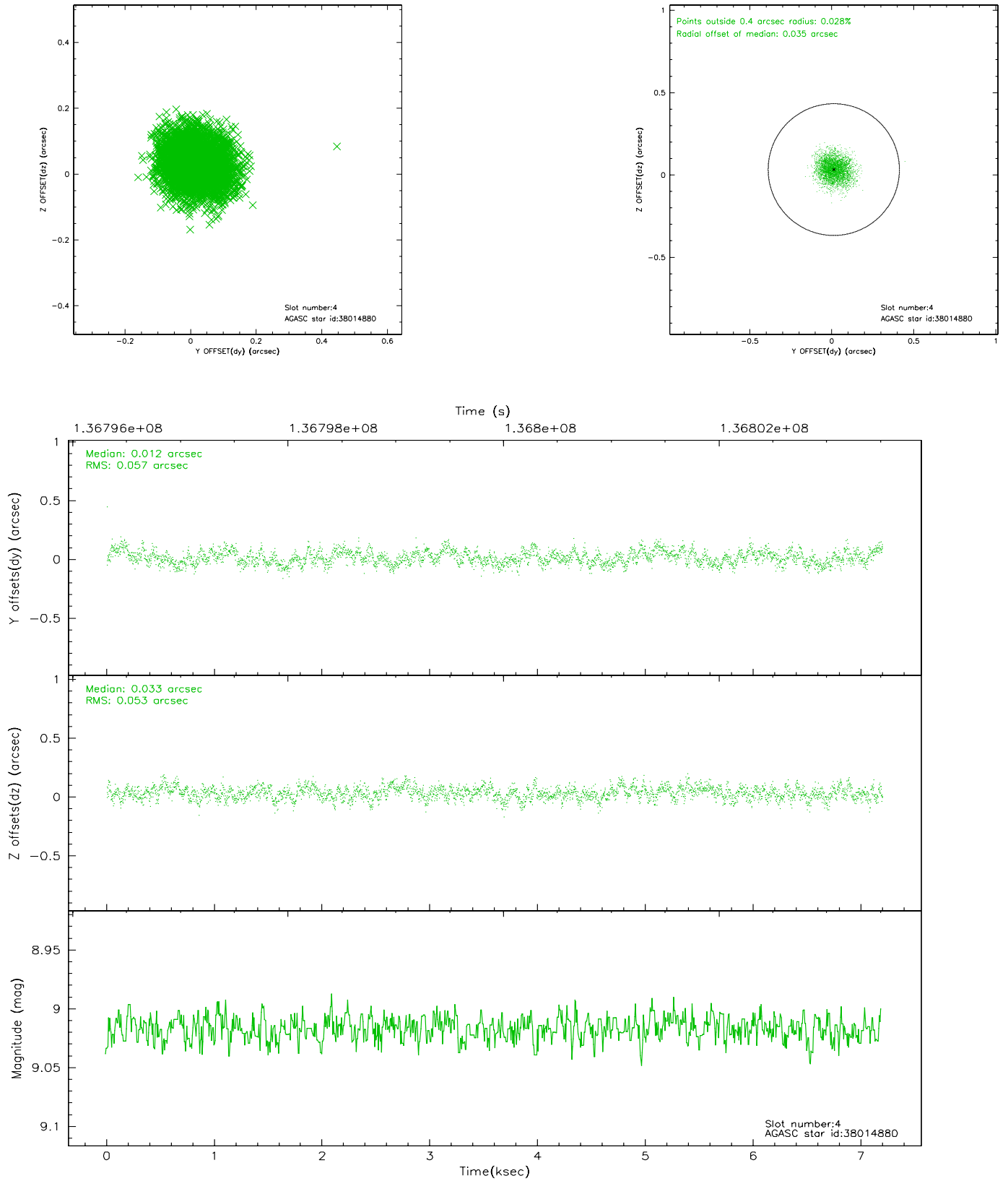
slot	status	id	mag	n_pts	med_dy	med_dz	dr1	dr2	ra	dec	mean_y	mean_z
0	FID	ACIS-S-2	7.12	1756	0.016	0.021	0.006	0.010	0.000000	0.000000	-755.50	-1727.64
1	FID	ACIS-S-4	7.20	1756	-0.043	-0.006	0.006	0.010	0.000000	0.000000	2157.34	180.03
2	FID	ACIS-S-6	7.35	1755	-0.000	-0.009	0.008	0.012	0.000000	0.000000	407.47	818.31
3	GUIDE	38013080	8.78	3508	-0.187	-0.037	0.089	0.138	191.266206	1.935531	-2183.22	-2156.09
4	GUIDE	38014880	9.02	3511	0.012	0.033	0.083	0.132	190.854086	1.148393	1007.13	-1934.73
5	GUIDE	38011440	9.13	3512	-0.026	-0.052	0.069	0.110	191.774365	1.480607	-1746.57	259.02
6	GUIDE	38014136	9.17	3512	0.111	0.059	0.086	0.139	191.330243	1.055857	392.95	-299.74
7	GUIDE	38011200	9.36	3510	0.088	0.005	0.161	0.240	190.877042	0.812711	1994.00	-1230.88

2.4 Star Slots

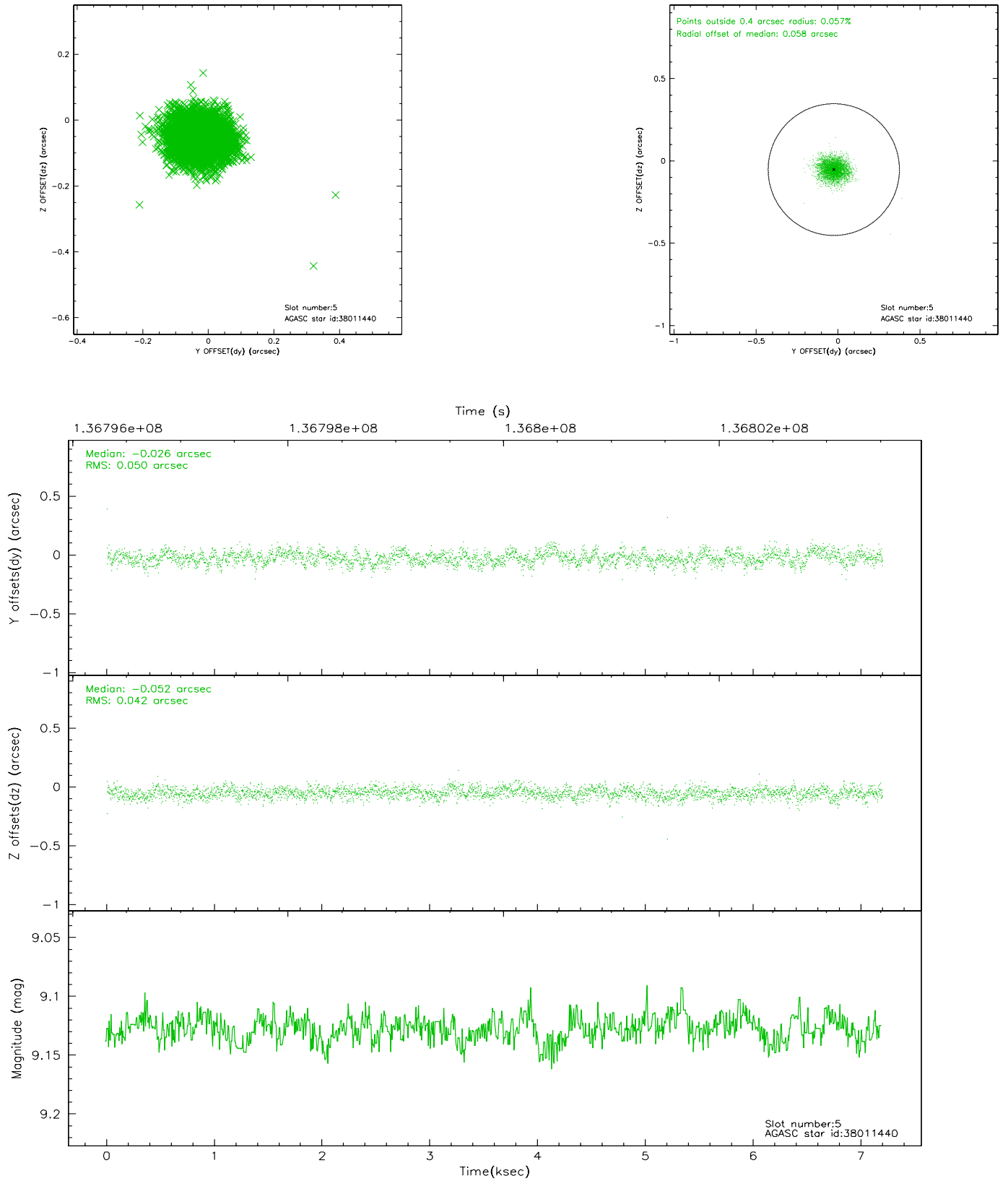
2.4.1 Slot 3



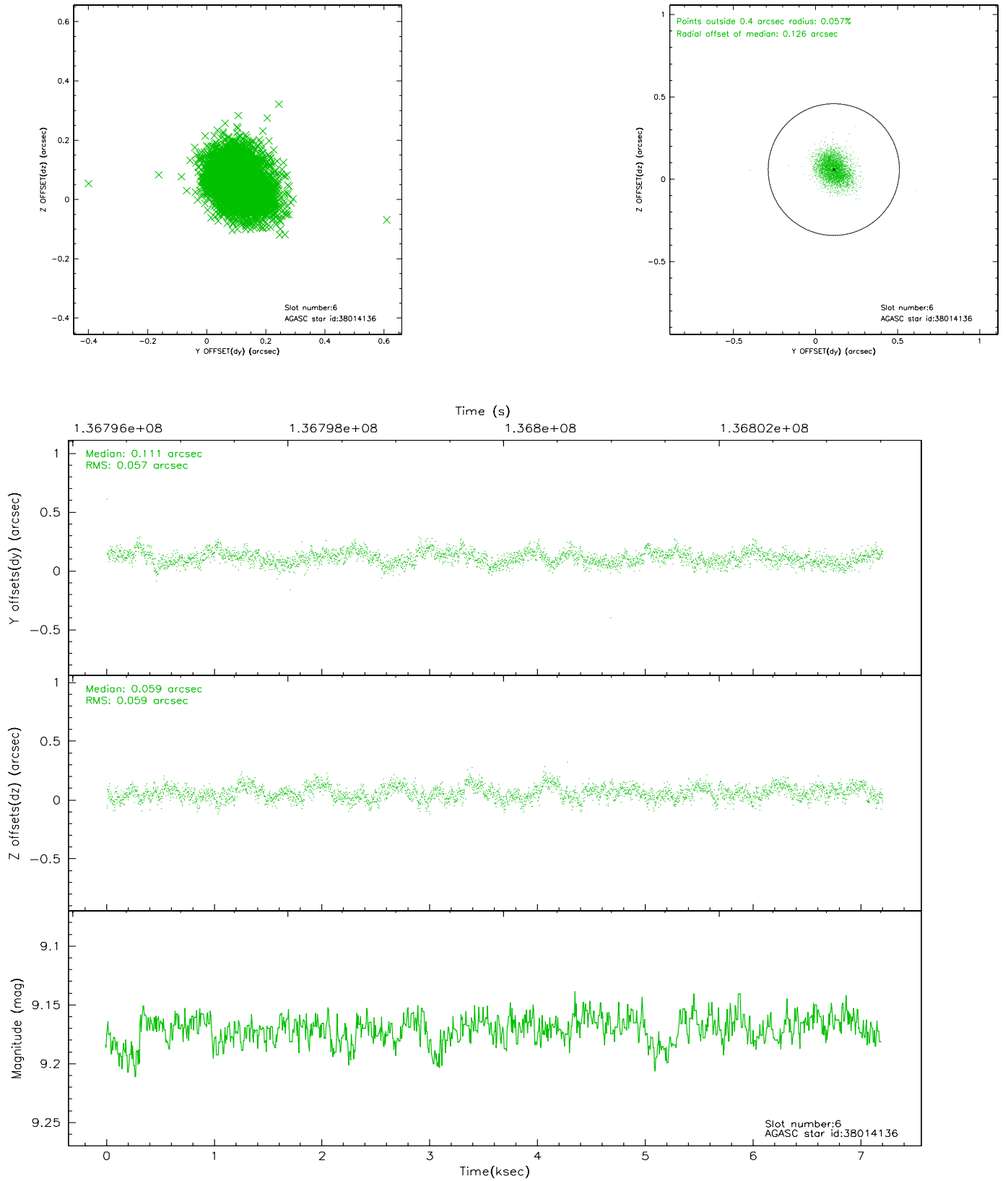
2.4.2 Slot 4



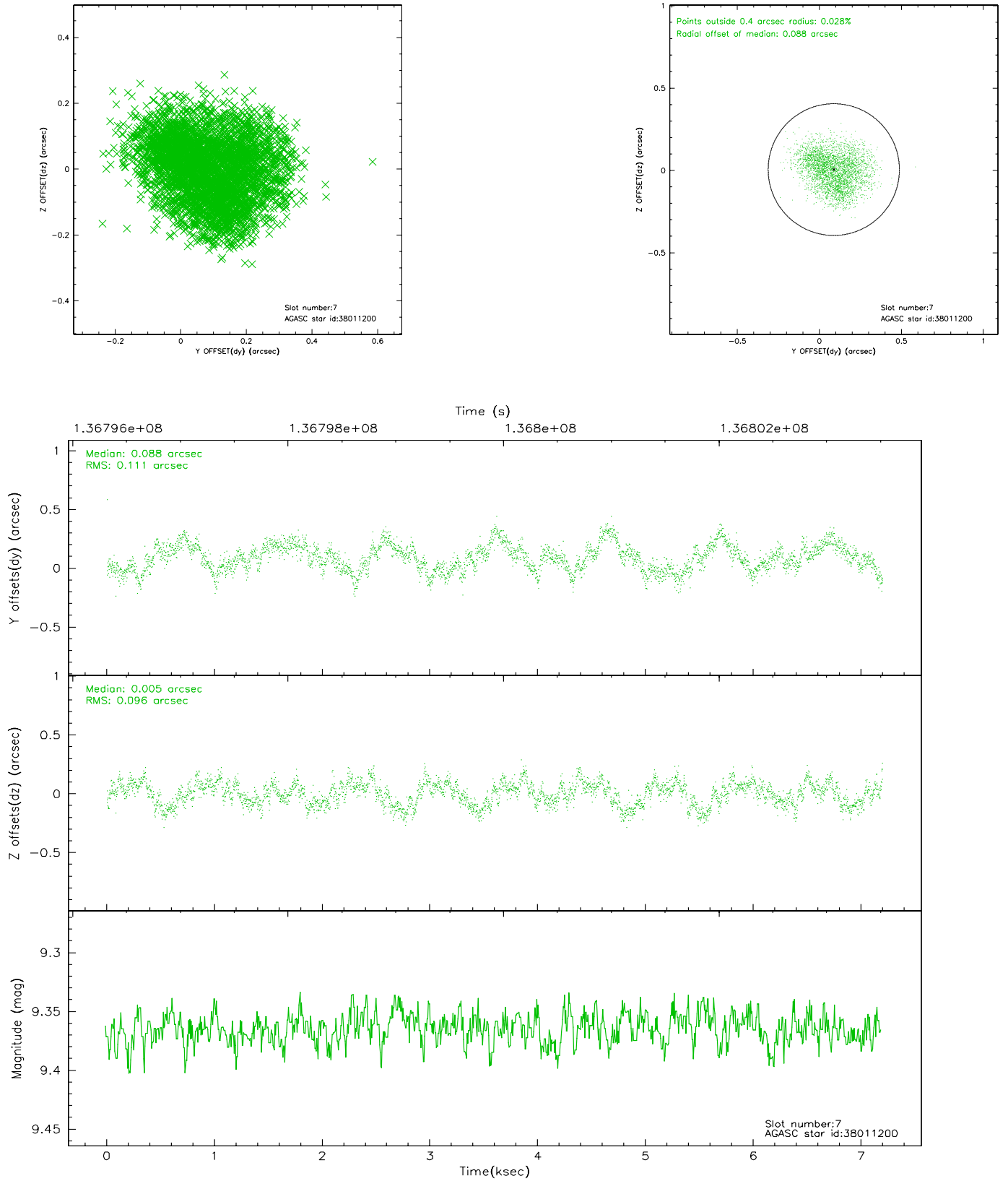
2.4.3 Slot 5



2.4.4 Slot 6

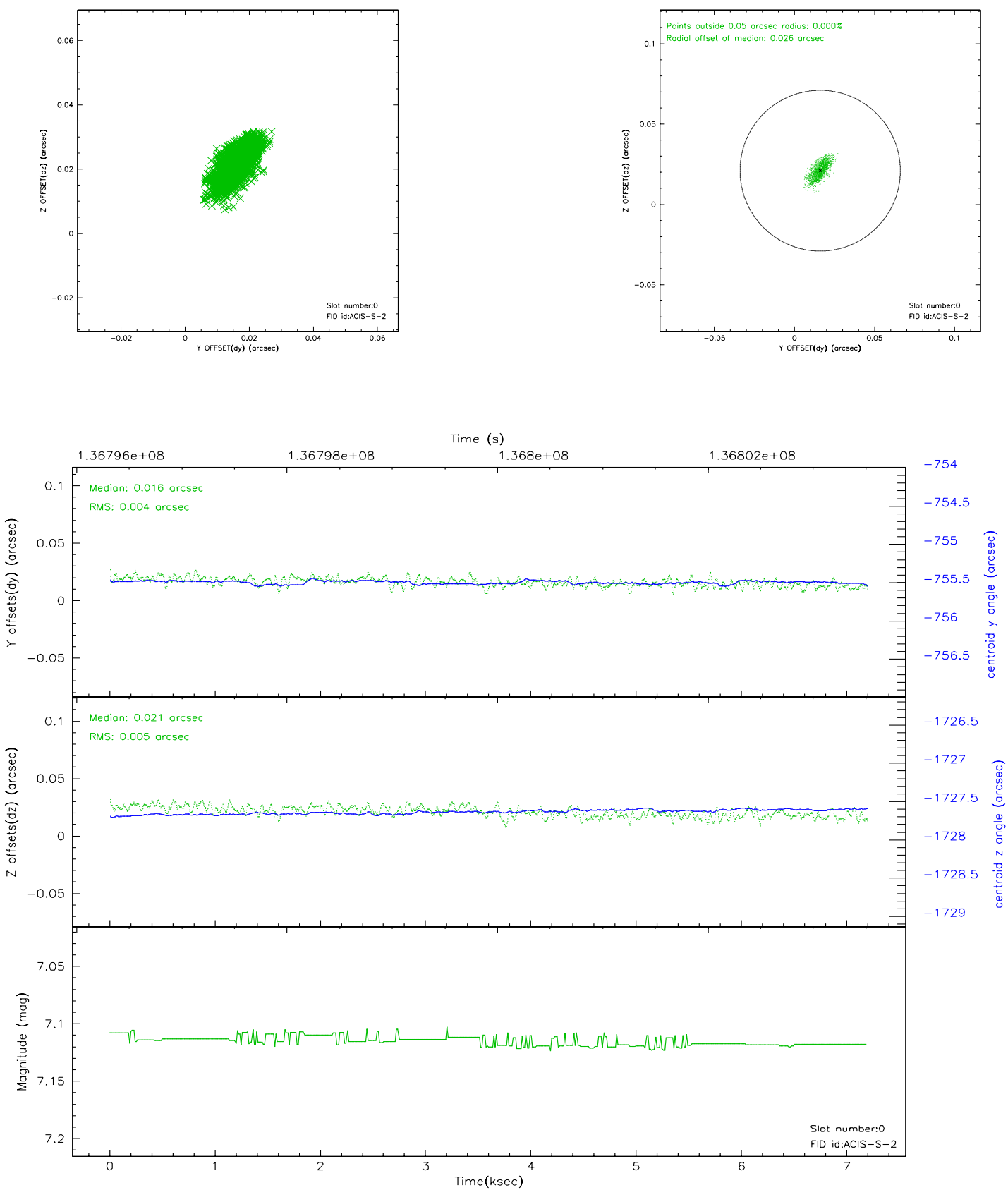


2.4.5 Slot 7

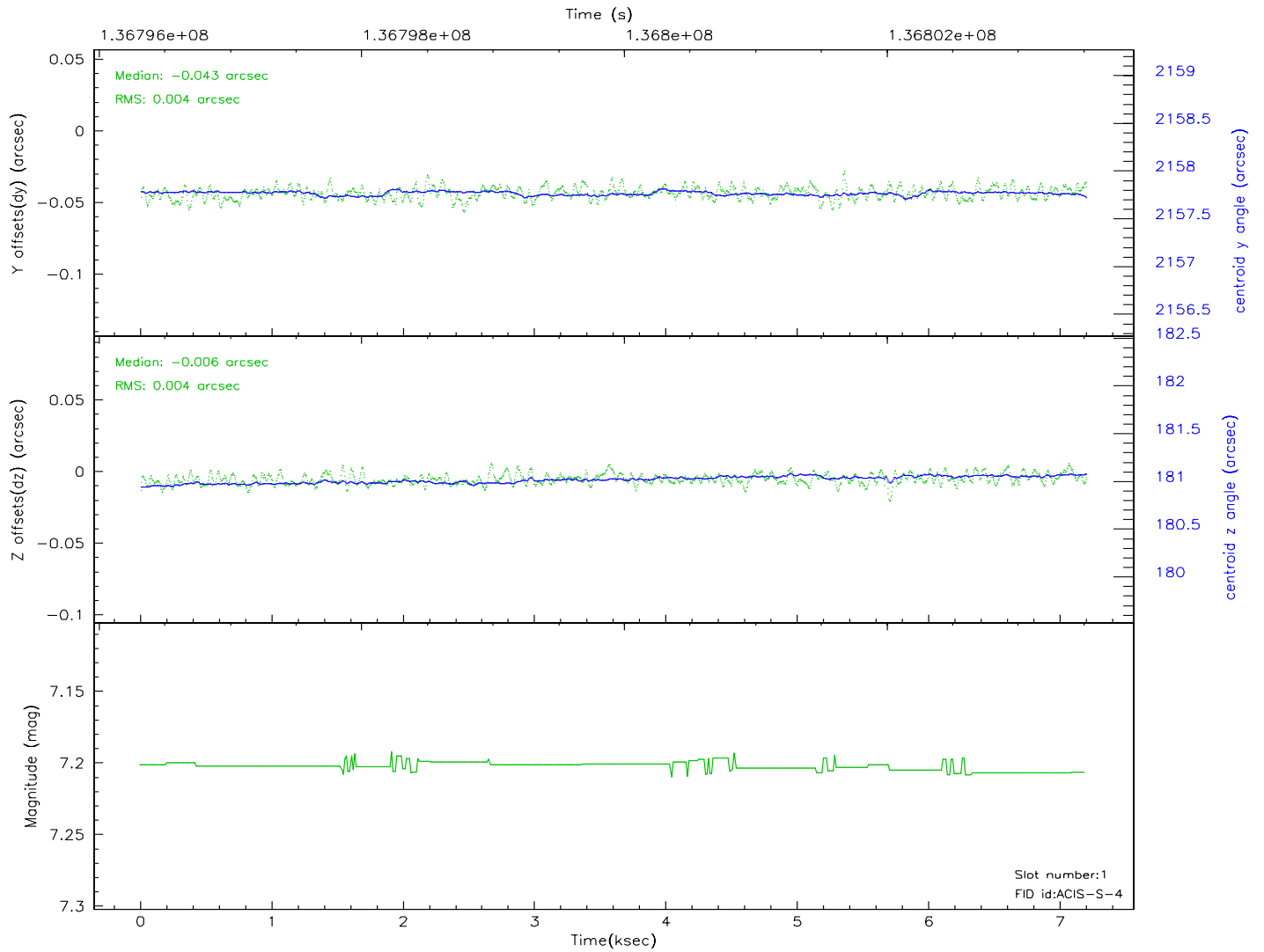
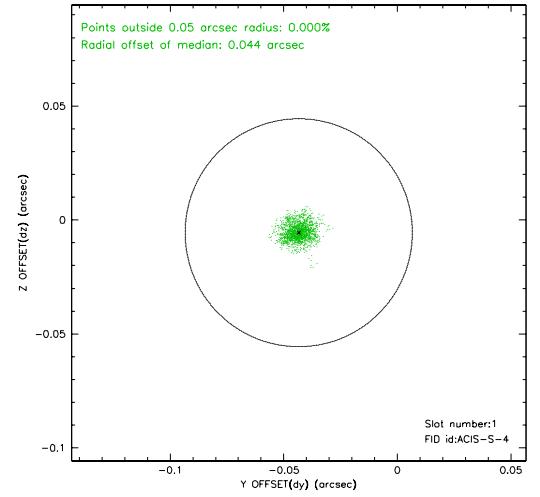
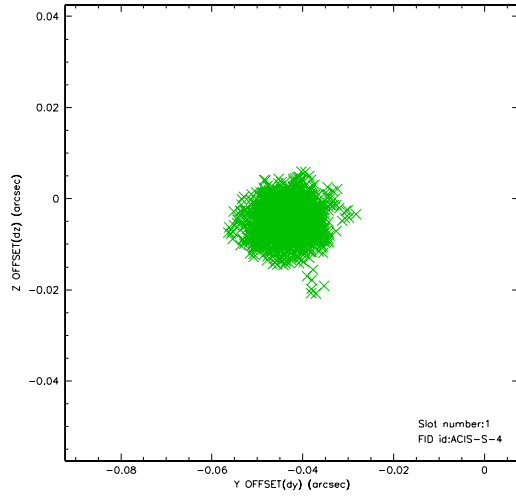


2.5 FID Slots

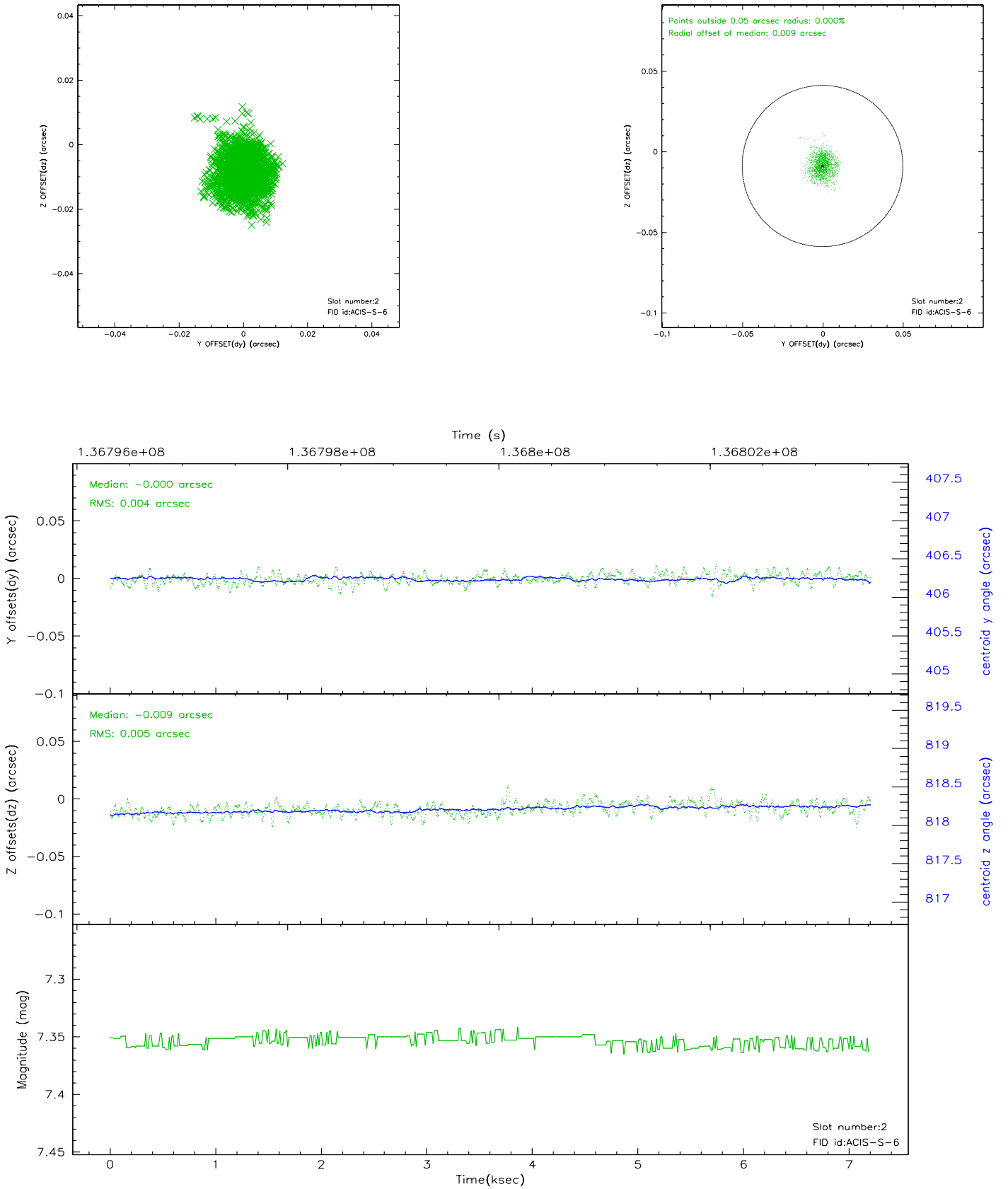
2.5.1 Slot 0



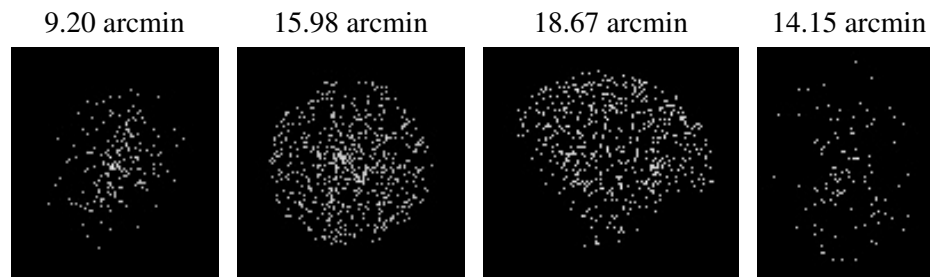
2.5.2 Slot 1



2.5.3 Slot 2



3 Point Sources



A Summary

A.1 Status

V&V Scientist	Doug Morgan
V&V Date (YYYY-MM-DD)	2006.09.15
V&V Edition	1
V&V Disposition and Status	OK
V&V Charge Time	6.751

A.2 Comments