

V&V Reference Report

L2 ASCDS Version : 7.6.9

Observation 2972 - L2 Version 001
Chandra X-Ray Center

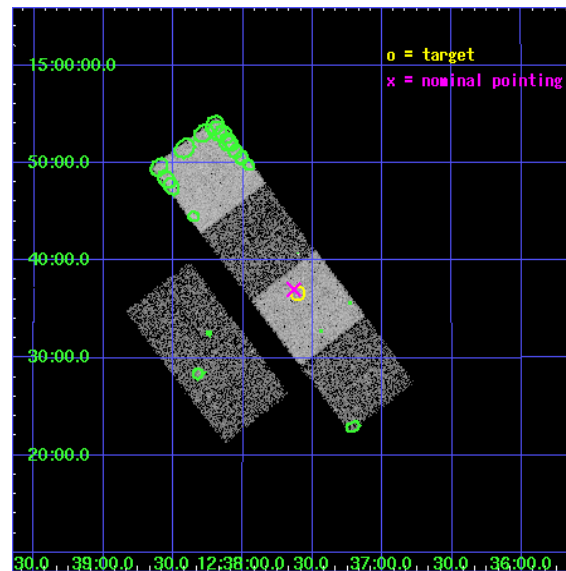
L2 Processing Date : Oct 9 2006

Contents

1	Front	2
2	OBI	3
2.1	OBI	3
2.1.1	Images	3
2.1.2	Bias	3
2.1.3	Parameters	4
2.1.4	Events	4
2.2	Compared Parameters	5
2.3	Aspect	6
2.4	Star Slots	9
2.4.1	Slot 3	9
2.4.2	Slot 4	10
2.4.3	Slot 5	11
2.4.4	Slot 6	12
2.4.5	Slot 7	13
2.5	FID Slots	14
2.5.1	Slot 0	14
2.5.2	Slot 1	15
2.5.3	Slot 2	16
3	Point Sources	17
A	Summary	18
A.1	Status	18
A.2	Comments	18

1 Front

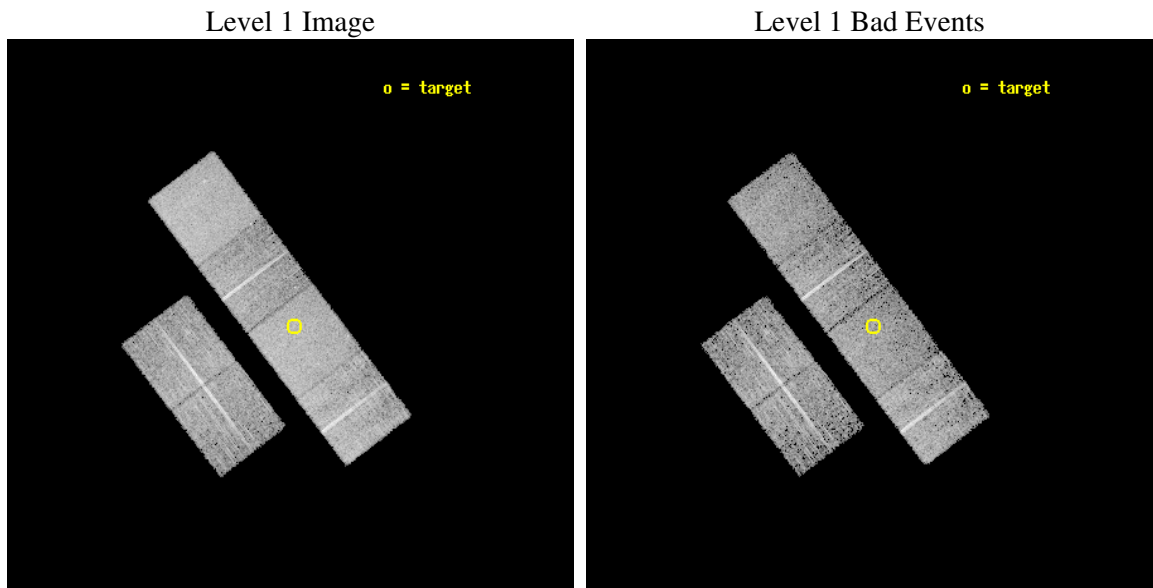
seq_num	700411
obs_id	2972
title	A COMPLETE X-RAY SAMPLE OF BROAD ABSORPTION LINE QSOS
observer	Professor Gordon Garmire
object	LBQS 1235+1453
dtcycle	0
cycle	P
ra_targ	189.401667
dec_targ	14.611111
ra_nom	189.40865068782
dec_nom	14.617258328182
roll_nom	52.807122168915
revision	2
ontime	6732.7999749184
livetime	6647.5452076305
ontime2	6729.559014678
ontime3	6732.7999749184
ontime5	6732.7999749184
ontime6	6732.7999749184
ontime7	6732.7999749184
ontime8	6729.5590046346
l2events	65800



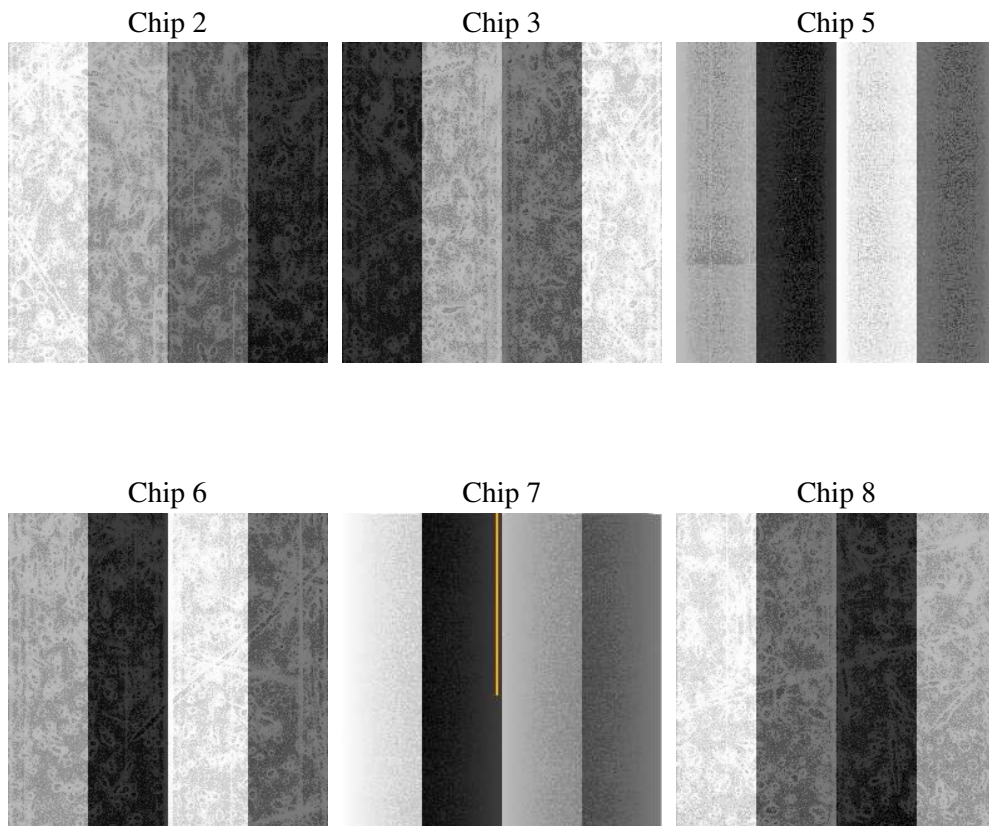
2 OBI

2.1 OBI

2.1.1 Images



2.1.2 Bias



2.1.3 Parameters

obi_num	1
ascdsver	7.6.9
caldbver	3.2.3
date	2006-10-09T15:38:01
revision	2

sched_exp_time	7000.000000
ontime	6738.0371401608
ontime2	6734.7962098122
ontime3	6741.278160274
ontime5	6738.0371401608
ontime6	6738.0371401608
ontime7	6738.0371401608
ontime8	6738.0370903313
l1events	305250

2.1.4 Events

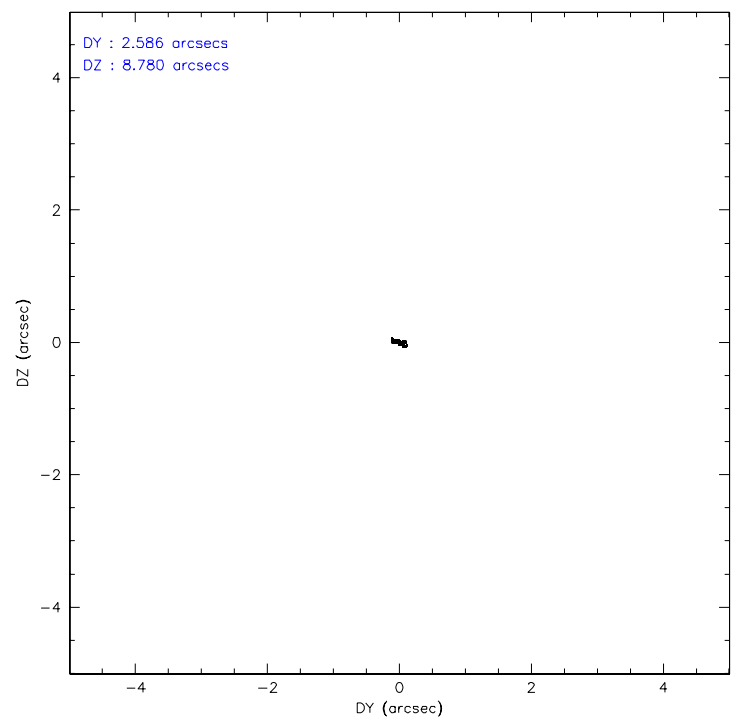
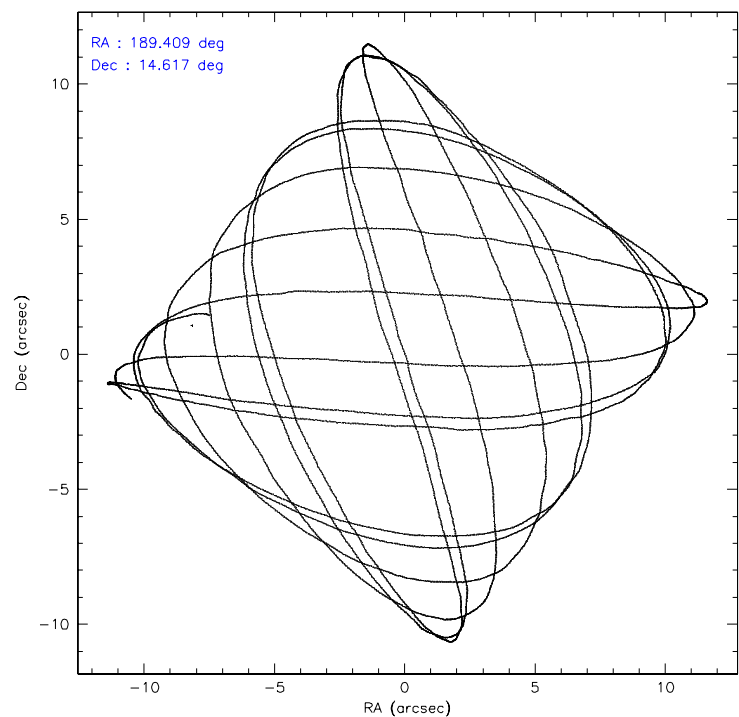
	ccd 2	ccd 3	ccd 5	ccd 6	ccd 7	ccd 8
level 1 events	45254	41148	60571	43289	57398	57590
rejected events	39959	36128	34162	38013	35385	46712
rejected %	88%	87%	56%	87%	61%	81%

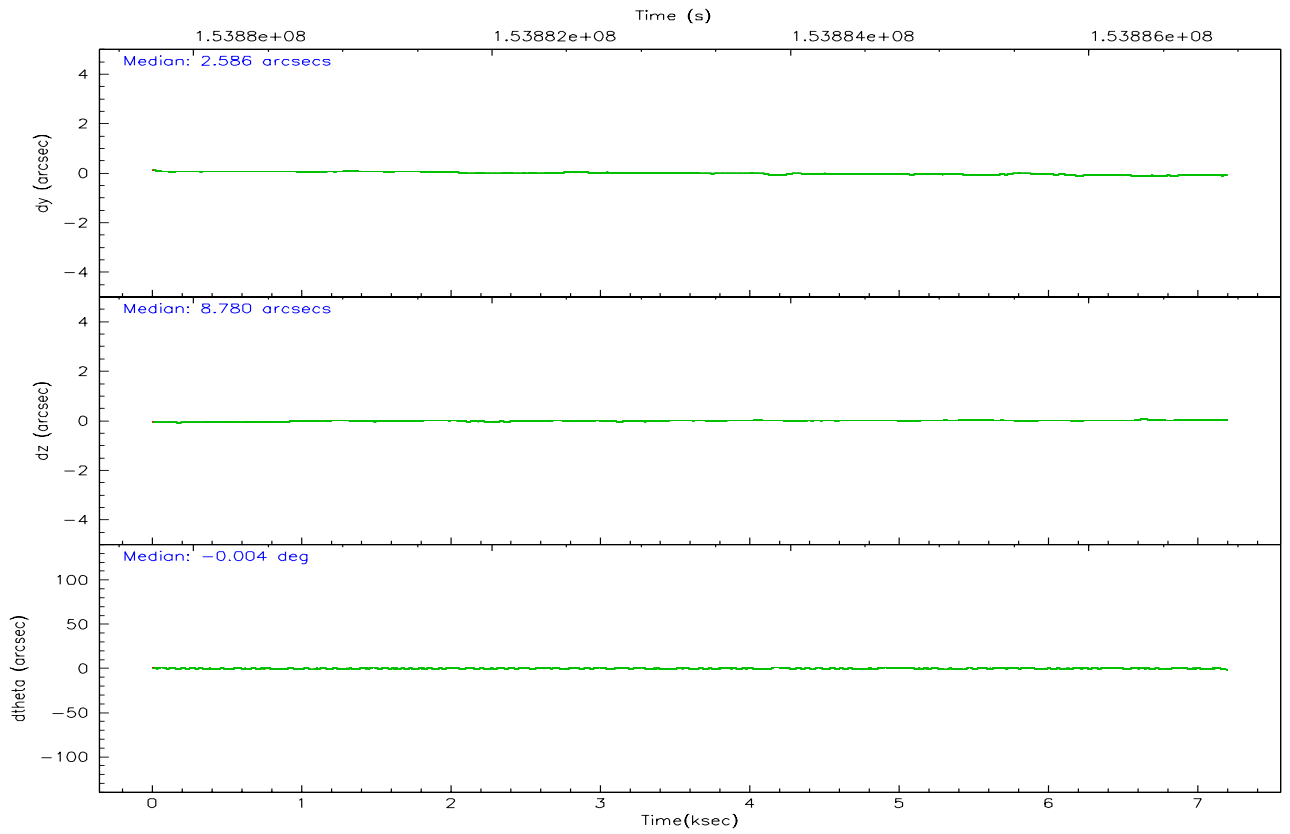
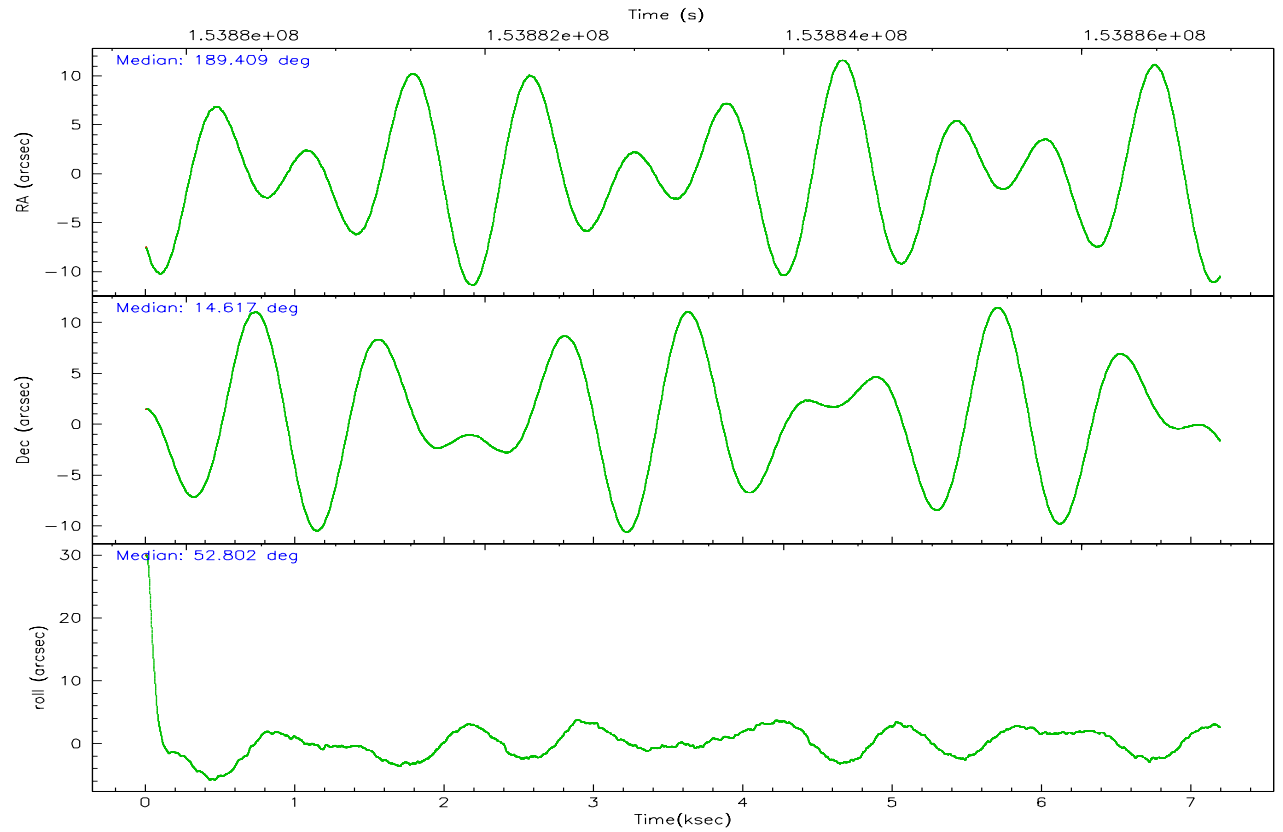
	ccd 2	ccd 3	ccd 5	ccd 6	ccd 7	ccd 8
grade 0 events	2411	2283	1281	2208	1494	3618
	5%	5%	2%	5%	2%	6%
grade 1 events	23	31	47	23	24	34
	0%	0%	0%	0%	0%	0%
grade 2 events	1058	894	8387	999	5437	2420
	2%	2%	13%	2%	9%	4%
grade 3 events	503	483	592	490	1195	1083
	1%	1%	0%	1%	2%	1%
grade 4 events	520	546	638	528	1120	1026
	1%	1%	1%	1%	1%	1%
grade 5 events	1591	1829	2908	1889	3927	2486
	3%	4%	4%	4%	6%	4%
grade 6 events	804	817	15525	1055	12778	2765
	1%	1%	25%	2%	22%	4%
grade 7 events	38344	34265	31193	36097	31423	44158
	84%	83%	51%	83%	54%	76%

2.2 Compared Parameters

Parameter	Planned	Actual	Parameter	Planned	Actual
Instrument	ACIS	ACIS	Obspar format version number	6	6
Detector	ACIS-235678	ACIS-235678	Obspar file type	PREDICTED	ACTUAL
Grating	NONE	NONE	Obspar update status	NONE	UPDATED
Data mode	FAINT	FAINT	Number of optional ACIS chips dropped	0	0
Observation mode	POINTING	POINTING	On-chip summing requested	N	N
Pointing RA	189.405551	189.408650687821	Subarray requested	NONE	NONE
Pointing Dec	14.590211	14.61725832818191	Alternating exposures requested	N	N
Pointing Roll	52.651229	52.80712216891482	Primary exposure time	0.000000	3.2
SIM focus pos (mm)	-0.684267	-0.6828225247311905			
SIM defocus (mm)	0	0.001444936568705701			
SIM translation stage pos (mm)	-190.132523	-190.1400660498719			
SIM translation stage offset (mm)	0	0.00754346686406393			
Observation start time	153879926.184000	153879502.60517			
Observation start date	2002-11-17T00:24:22	2002-11-17T00:18:22			
Observation end time	153886926.184000	153887139.36798			
Observation end date	2002-11-17T02:21:02	2002-11-17T02:25:39			
Read mode	TIMED	TIMED			

2.3 Aspect



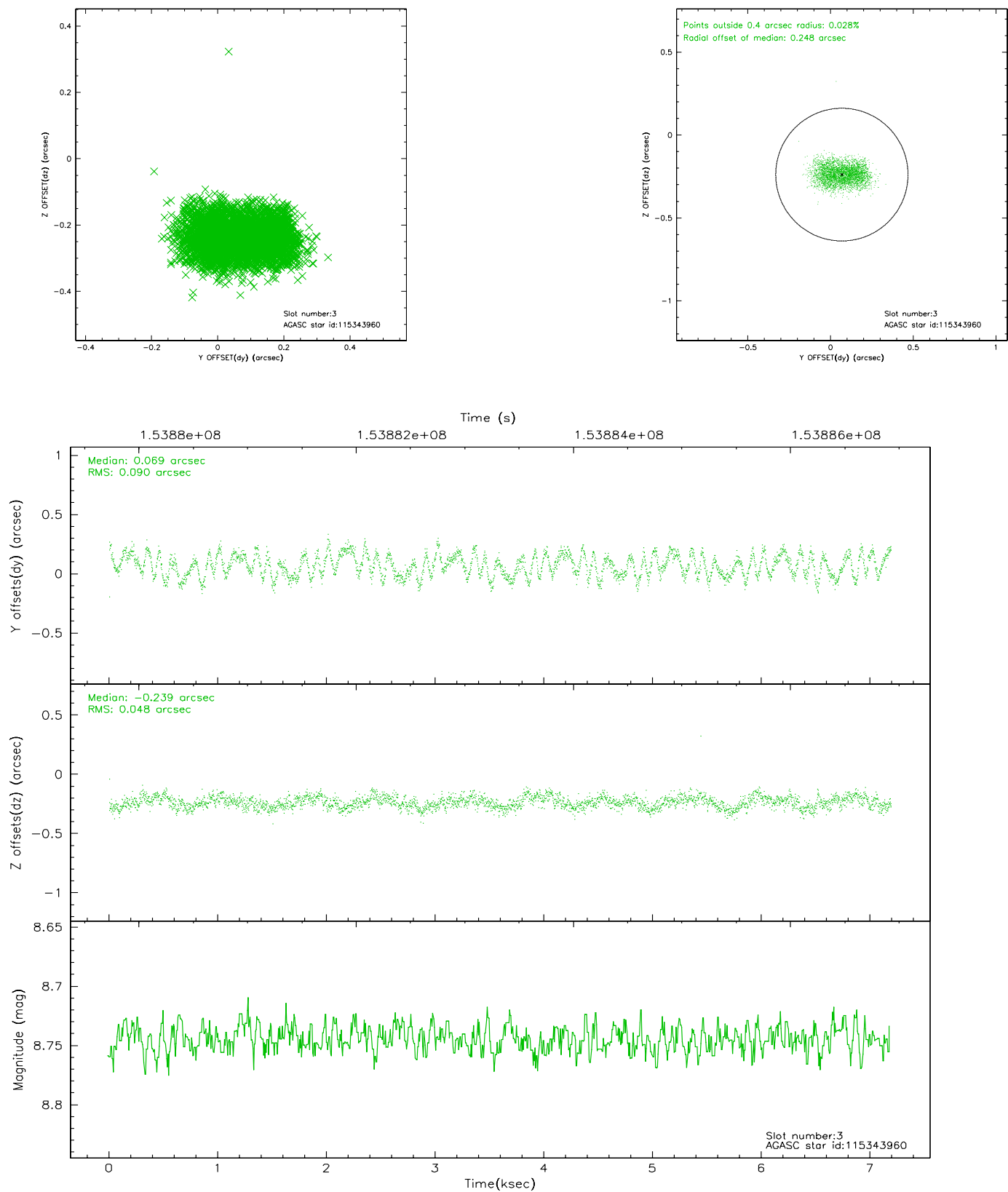


Slot Statistics

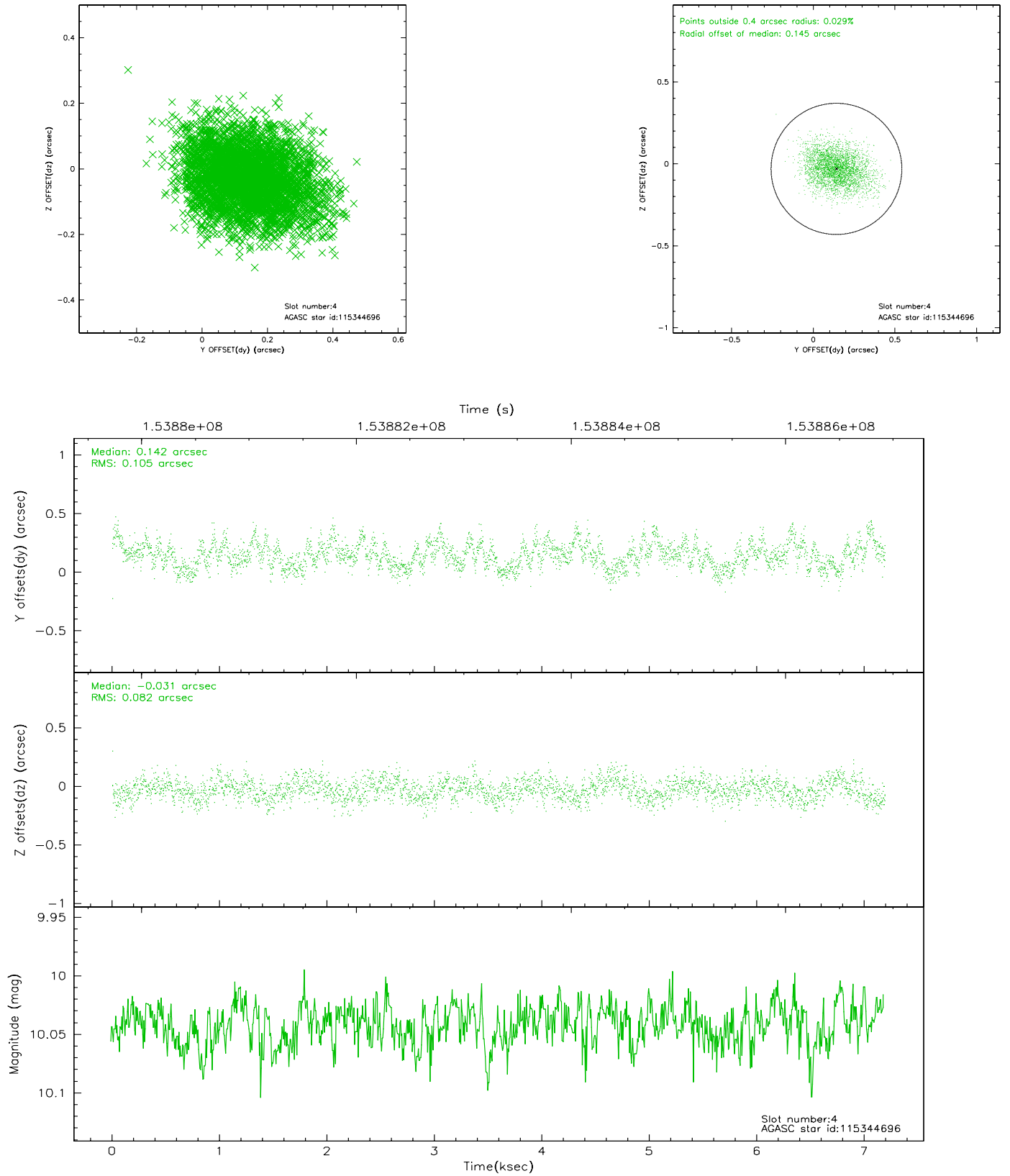
slot	status	id	mag	n_pts	med_dy	med_dz	dr1	dr2	ra	dec	mean_y	mean_z
0	FID	ACIS-S-2	7.11	1755	-0.008	0.020	0.008	0.012	0.000000	0.000000	-755.22	-1729.97
1	FID	ACIS-S-4	7.20	1755	-0.057	-0.001	0.005	0.009	0.000000	0.000000	2157.65	177.66
2	FID	ACIS-S-5	7.24	1755	0.034	-0.010	0.007	0.012	0.000000	0.000000	-1806.99	172.24
3	GUIDE	115343960	8.74	3509	0.069	-0.239	0.112	0.170	188.590007	14.643744	-1565.87	2377.47
4	GUIDE	115344696	10.04	3506	0.142	-0.031	0.143	0.232	188.739926	14.495064	-1677.21	1638.64
5	GUIDE	115475336	7.75	3508	-0.013	-0.015	0.097	0.180	189.606179	14.872414	1231.19	61.82
6	GUIDE	115482704	7.02	3508	0.032	0.308	0.092	0.132	189.646201	13.805457	-1734.25	-2382.77
7	GUIDE	189543784	9.05	3505	-0.237	-0.015	0.155	0.223	189.184903	15.264210	1463.81	2080.52

2.4 Star Slots

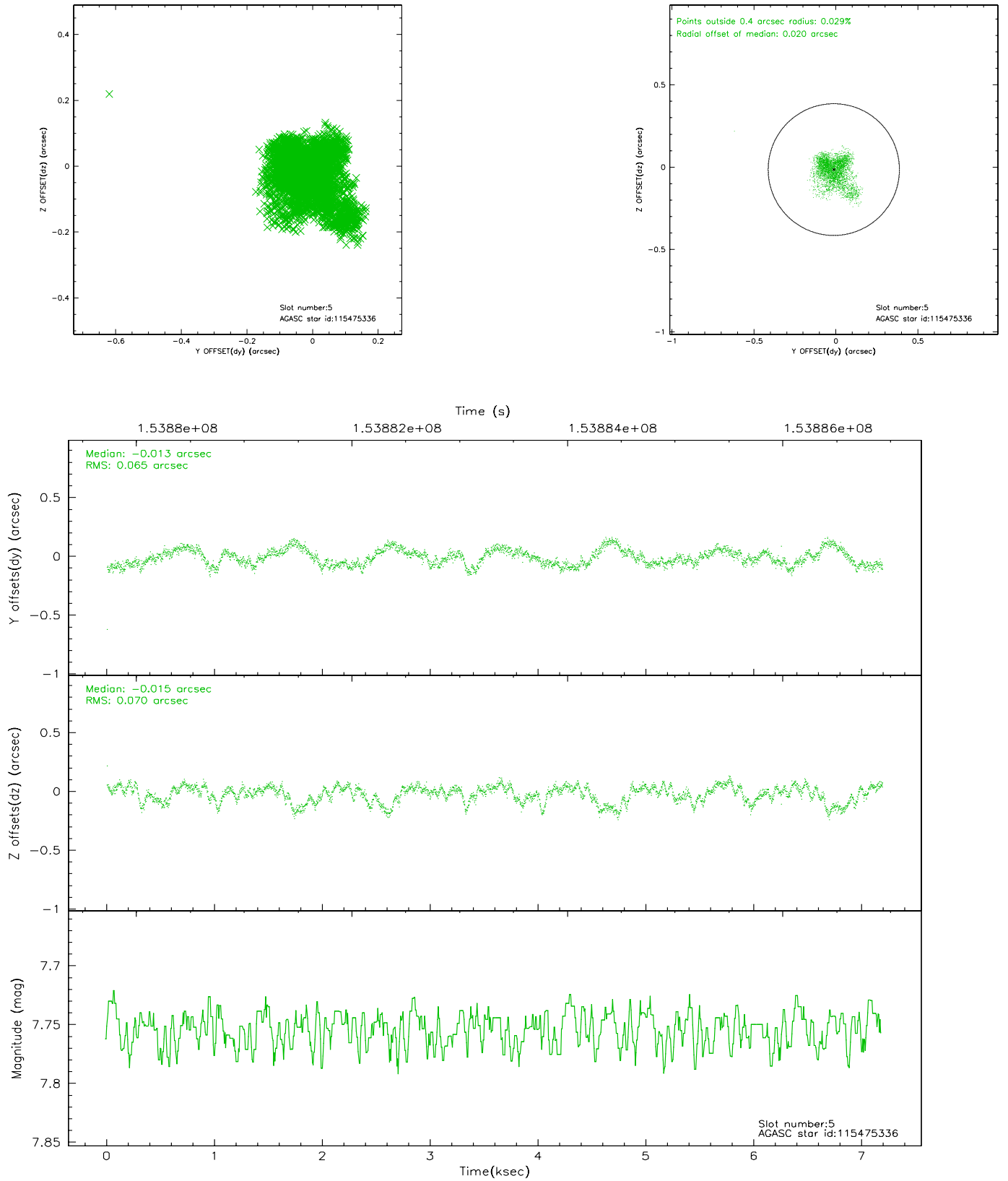
2.4.1 Slot 3



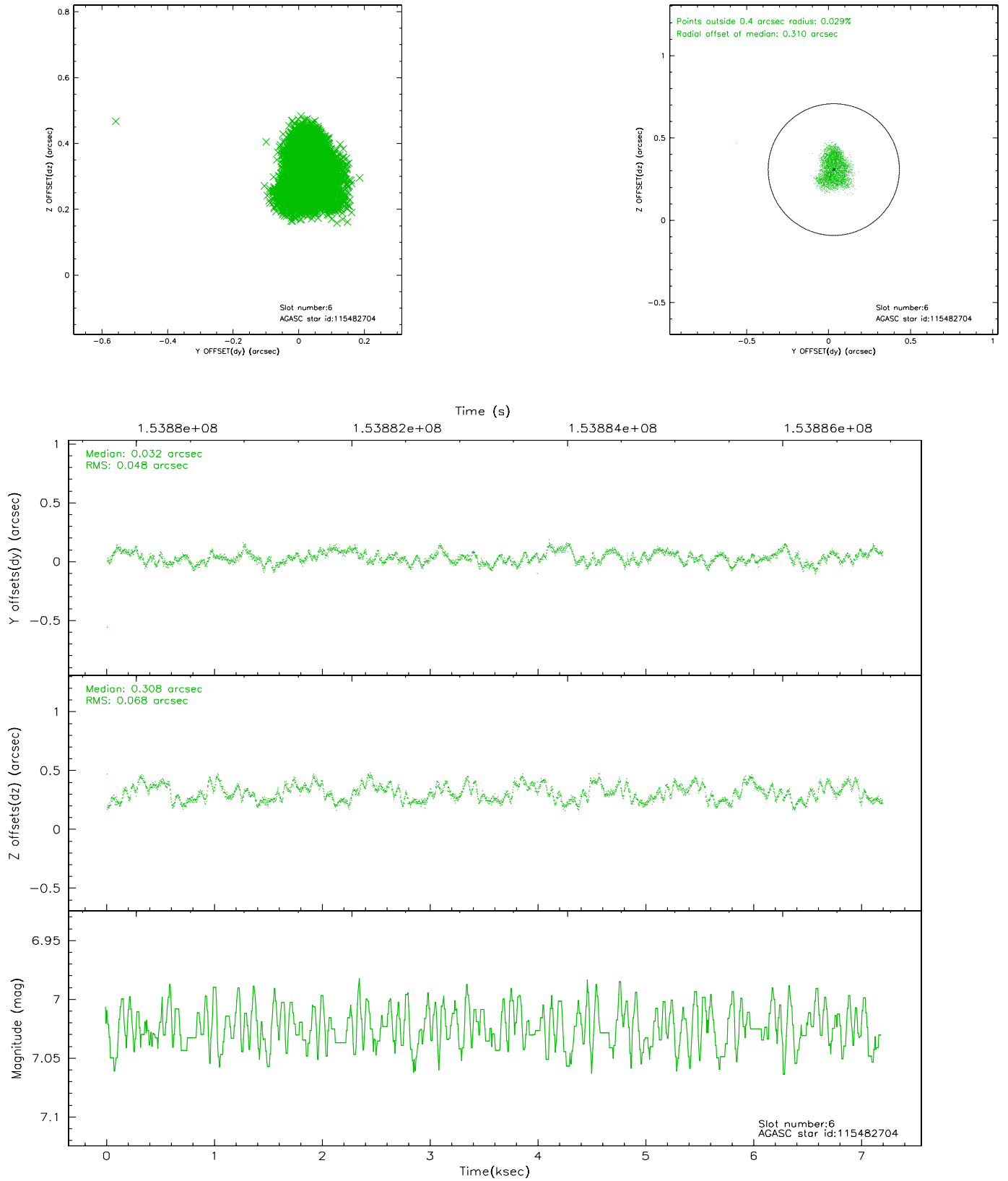
2.4.2 Slot 4



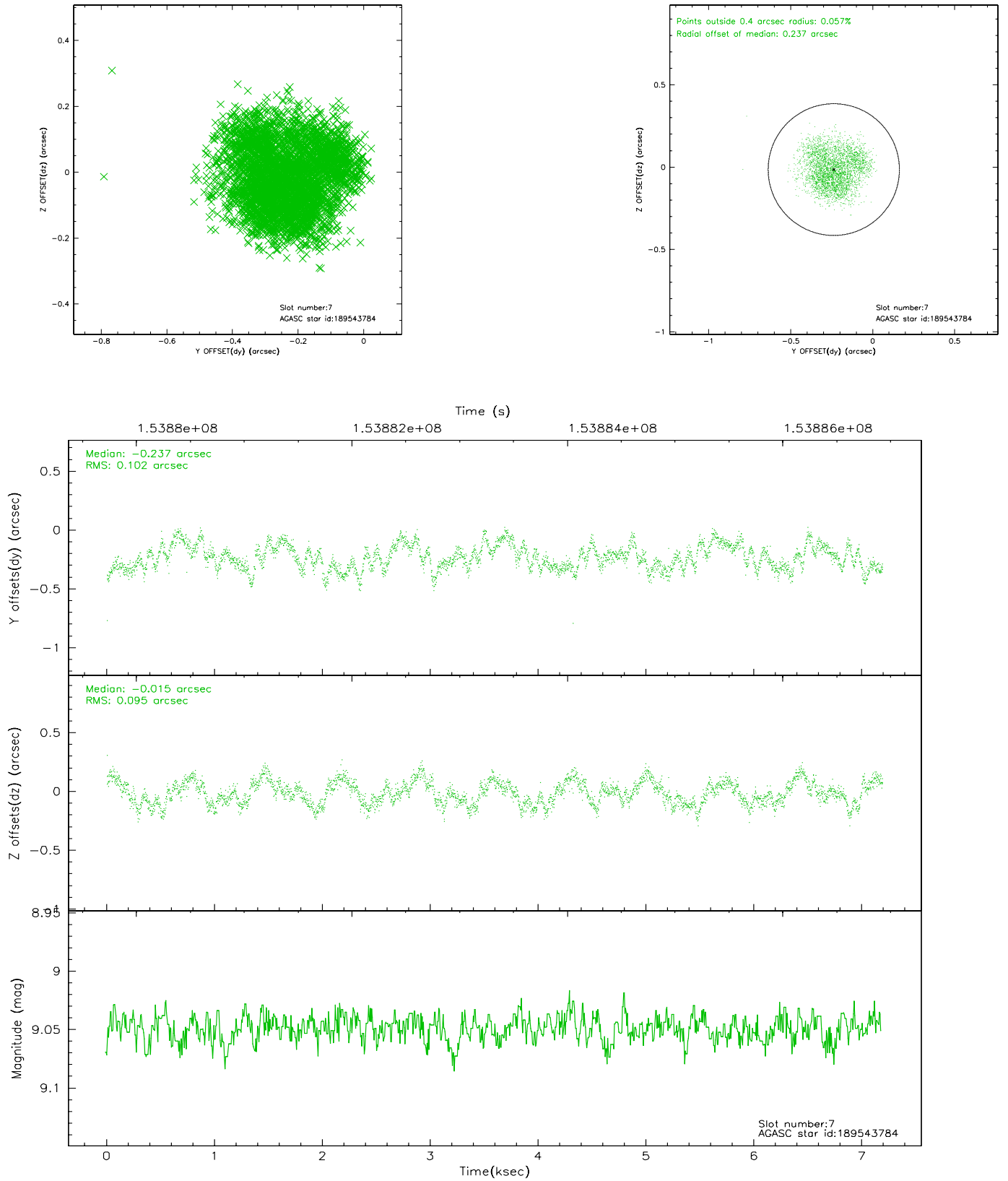
2.4.3 Slot 5



2.4.4 Slot 6

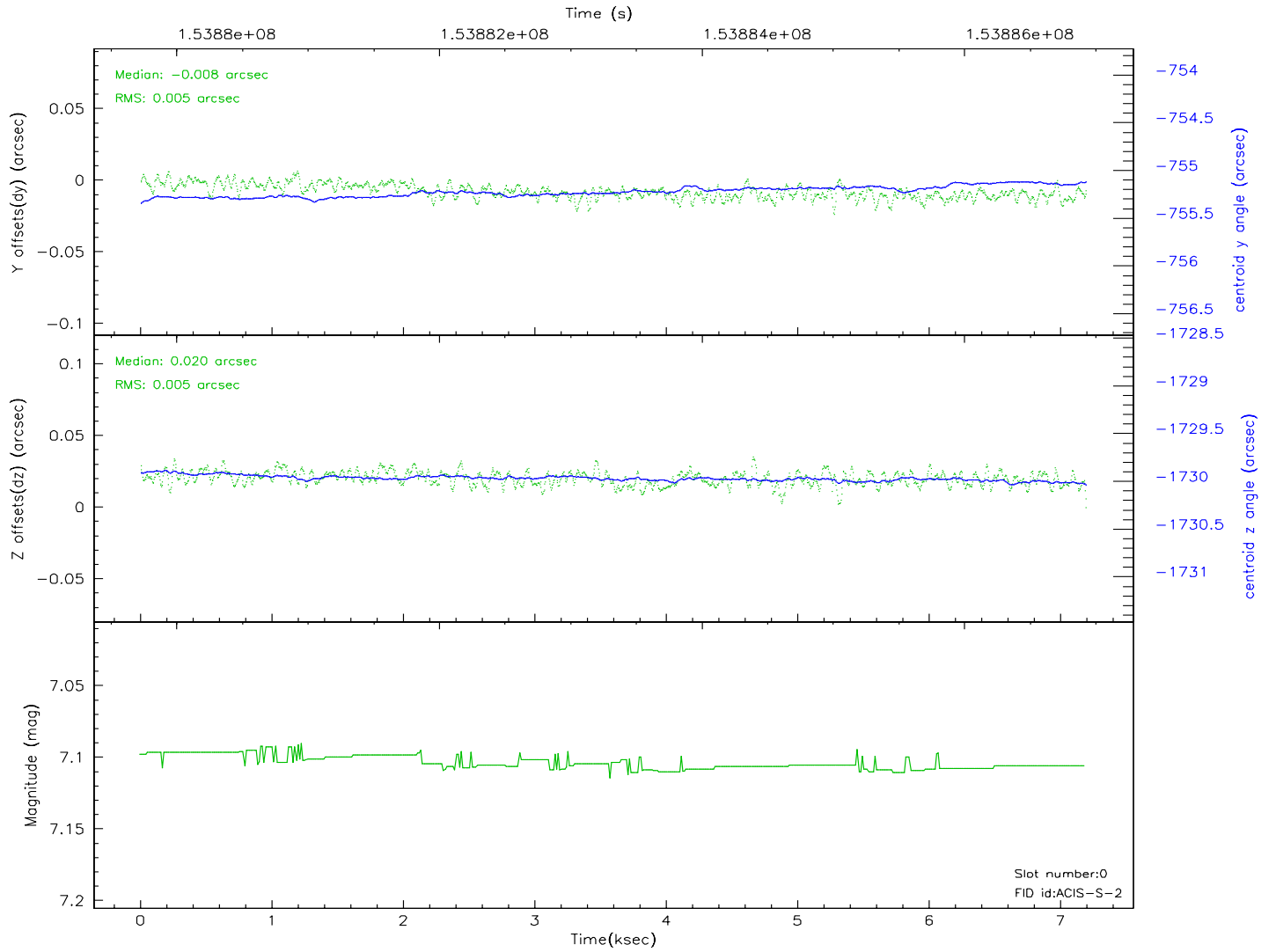
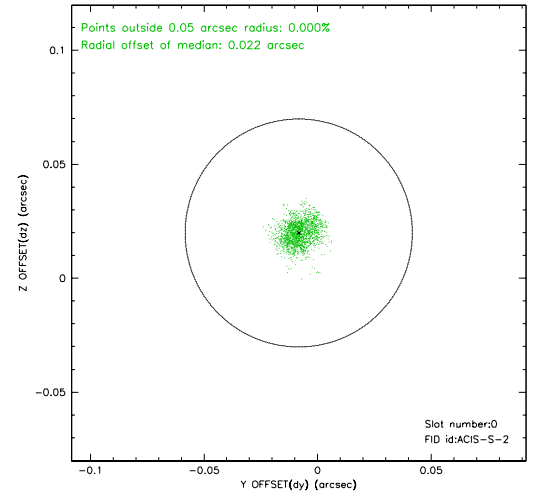
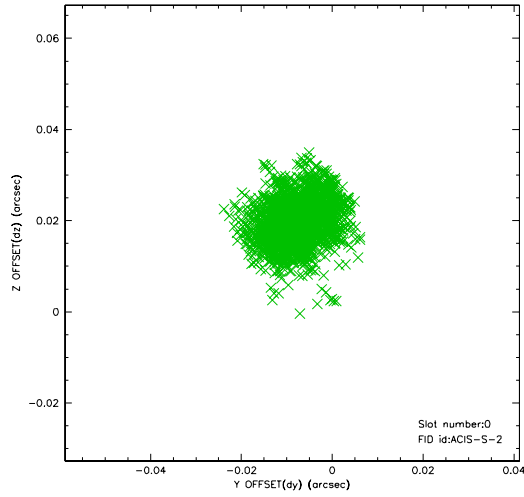


2.4.5 Slot 7

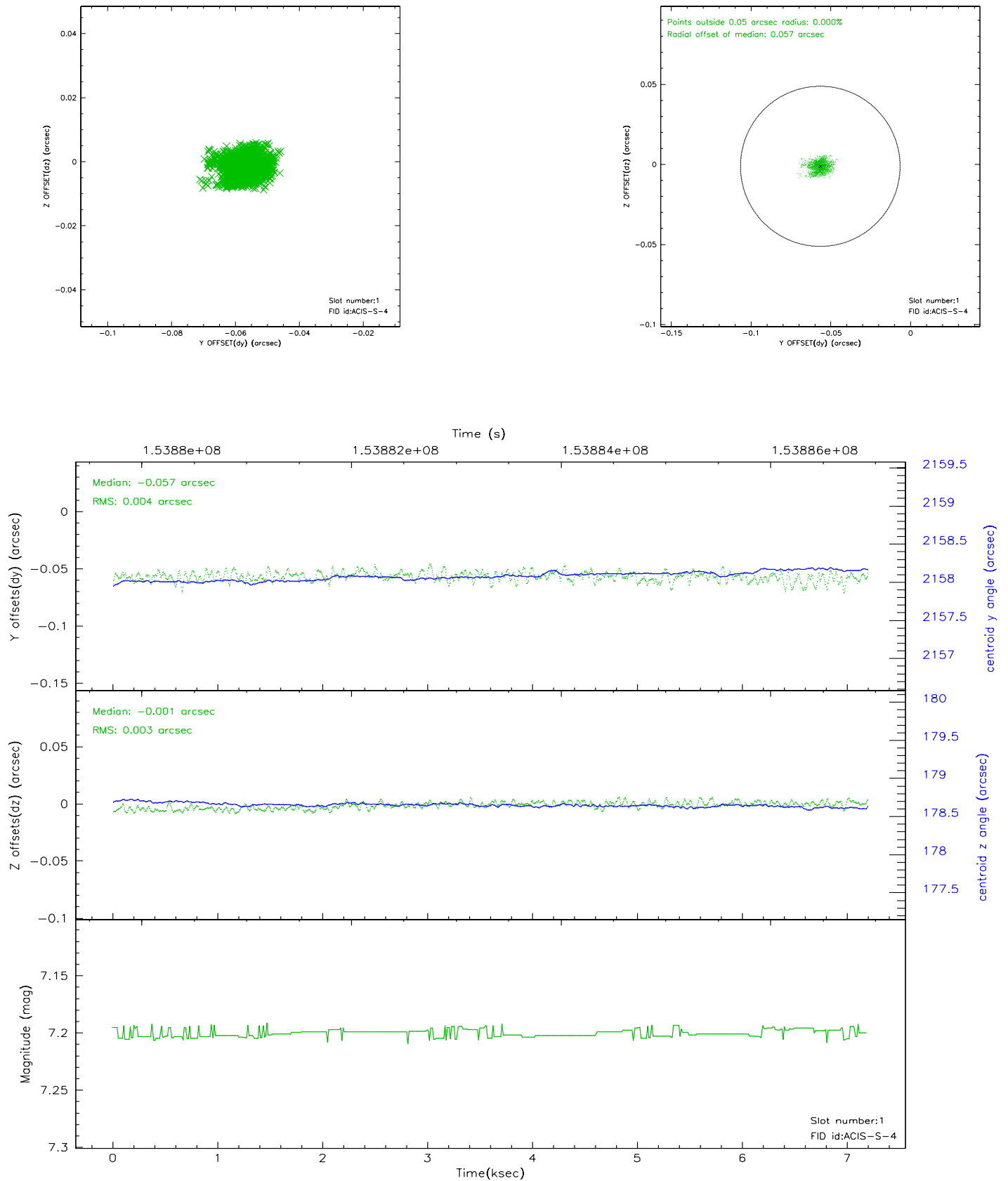


2.5 FID Slots

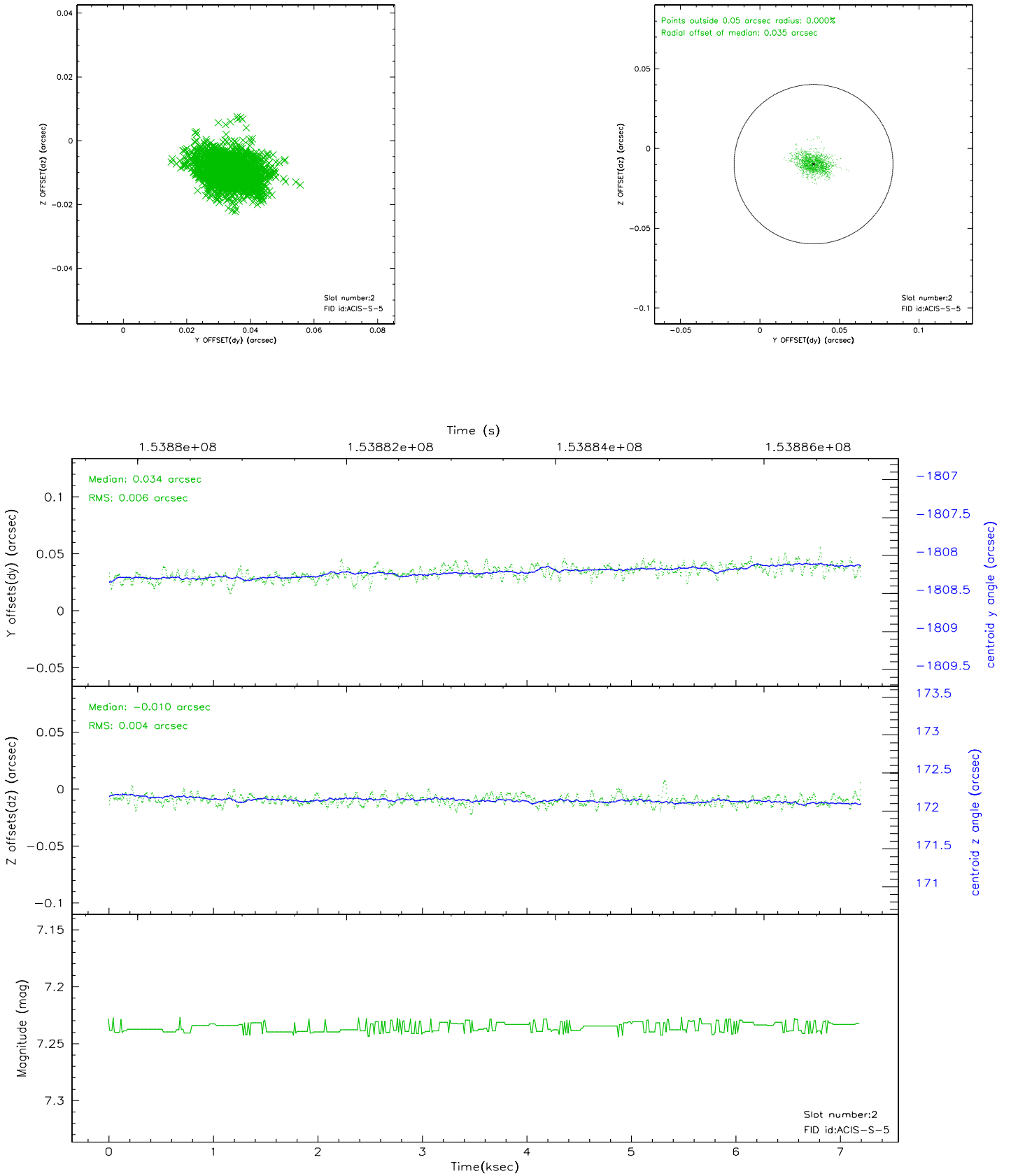
2.5.1 Slot 0



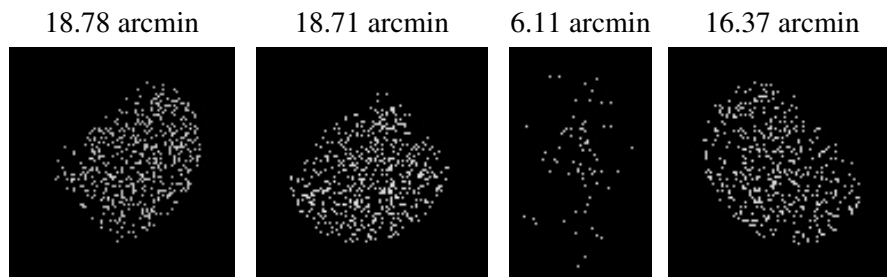
2.5.2 Slot 1



2.5.3 Slot 2



3 Point Sources



A Summary

A.1 Status

V&V Scientist	Jen Lauer
V&V Date (YYYY-MM-DD)	2006.10.10
V&V Edition	1
V&V Disposition and Status	OK
V&V Charge Time	6.732

A.2 Comments