

V&V Reference Report

L2 ASCDS Version : 7.6.9

Observation 2968 - L2 Version 001
Chandra X-Ray Center

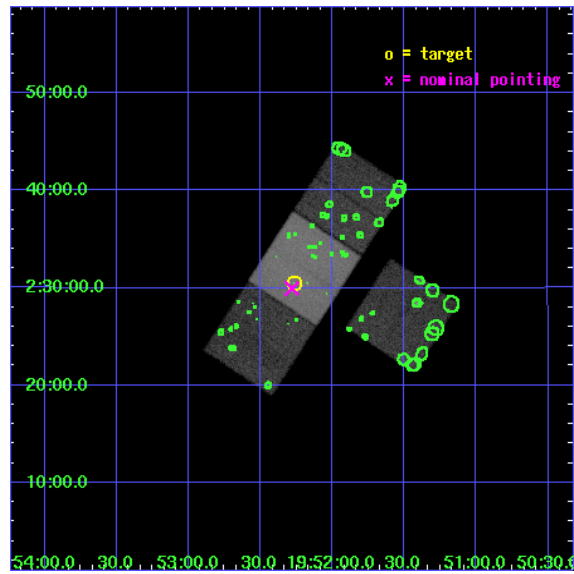
L2 Processing Date : Oct 14 2006

Contents

1	Front	2
2	OBI	3
2.1	OBI	3
2.1.1	Images	3
2.1.2	Bias	3
2.1.3	Parameters	4
2.1.4	Events	4
2.2	Compared Parameters	5
2.3	Aspect	6
2.4	Star Slots	9
2.4.1	Slot 3	9
2.4.2	Slot 4	10
2.4.3	Slot 5	11
2.4.4	Slot 6	12
2.4.5	Slot 7	13
2.5	FID Slots	14
2.5.1	Slot 0	14
2.5.2	Slot 1	15
2.5.3	Slot 2	16
3	Point Sources	17
A	Summary	18
A.1	Status	18
A.2	Comments	18

1 Front

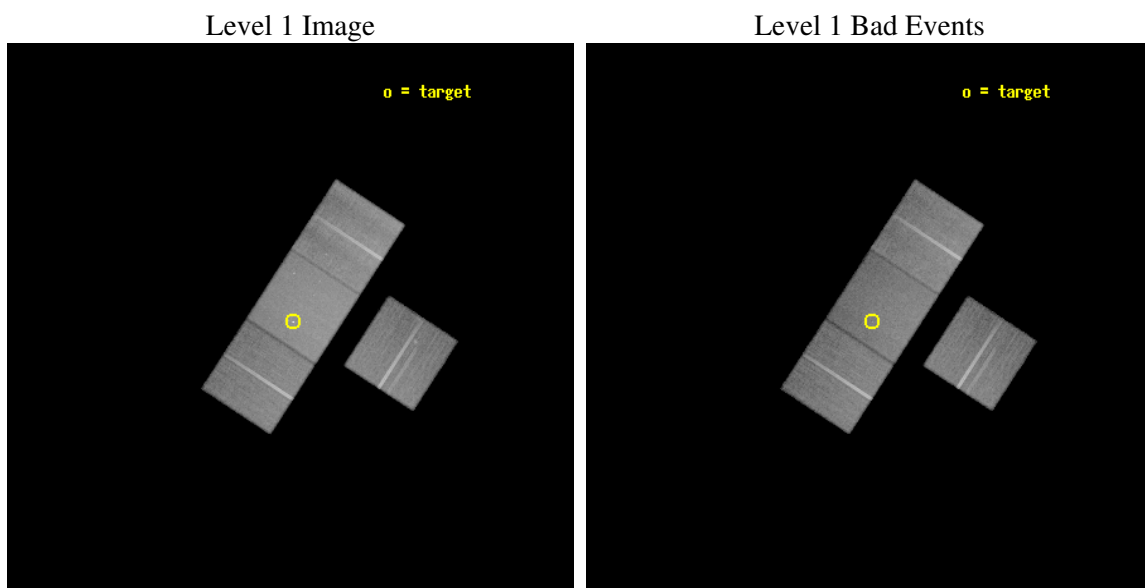
seq_num	700407
obs_id	2968
title	A CHANDRA OBSERVATION OF THE UNUSUAL RADIO GALAXY 3C 403
observer	Dr. Stephen Murray
object	3C403
dtcycle	0
cycle	P
ra_targ	298.066667
dec_targ	2.507778
ra_nom	298.07043487089
dec_nom	2.4988911789627
roll_nom	303.08288953237
revision	2
ontime	50126.999903619
livetime	49472.053746918
ontime3	50123.858943373
ontime6	50126.999903619
ontime7	50126.999903619
ontime8	50126.999903619
l2events	279067



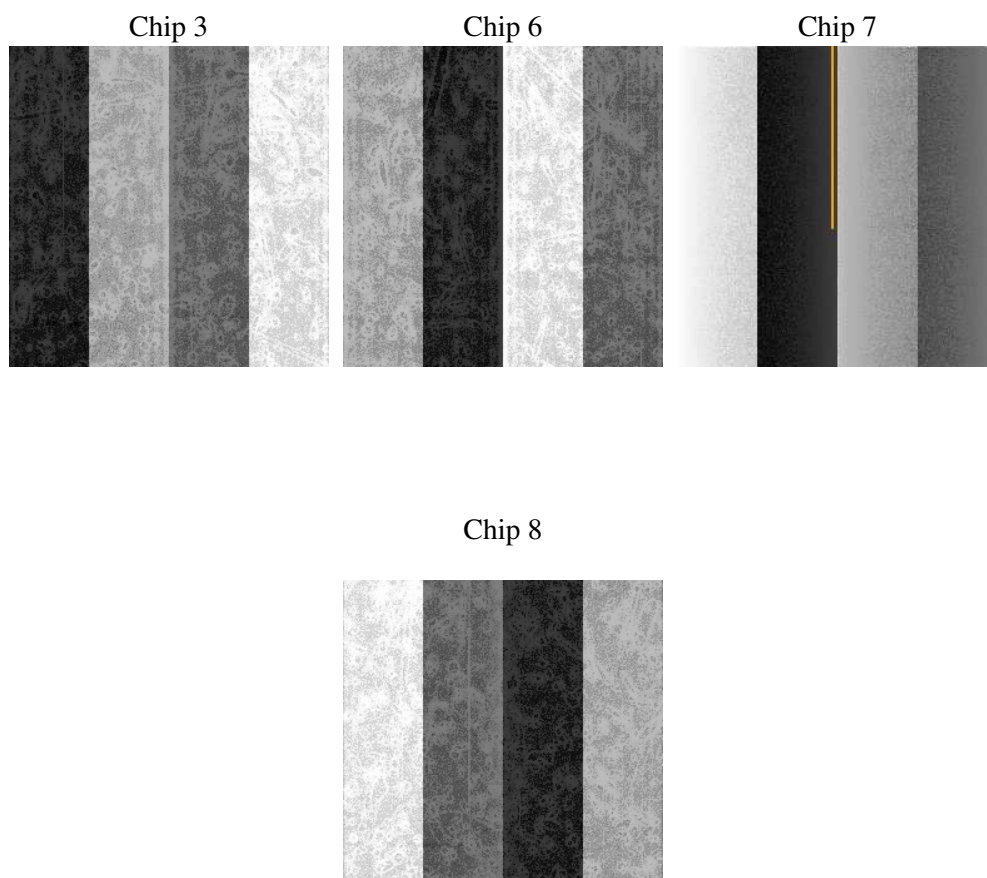
2 OBI

2.1 OBI

2.1.1 Images



2.1.2 Bias



2.1.3 Parameters

obi_num	1
ascdsver	7.6.9
caldbver	3.2.3
date	2006-10-14T22:14:51
revision	2

sched_exp_time	50000.000000
ontime	50450.741884977
ontime3	50447.60092473
ontime6	50450.741884977
ontime7	50450.741884977
ontime8	50450.741884977
l1events	1464061

2.1.4 Events

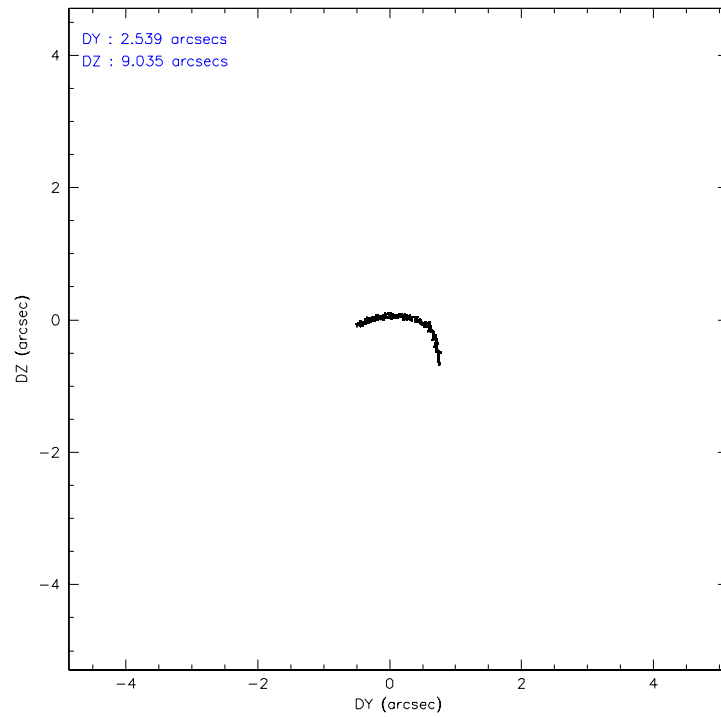
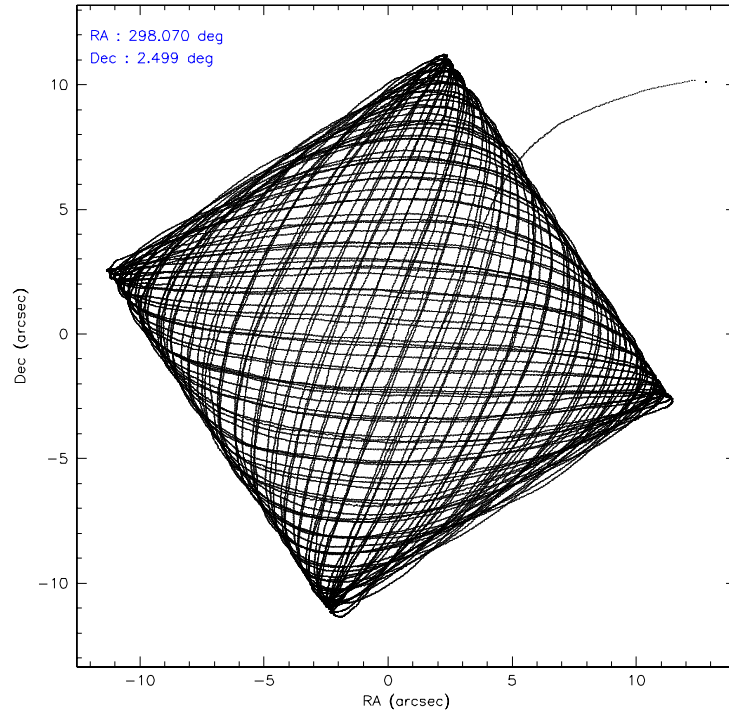
	ccd 3	ccd 6	ccd 7	ccd 8
level 1 events	311347	321350	433254	398110
rejected events	274316	282182	257258	315651
rejected %	88%	87%	59%	79%

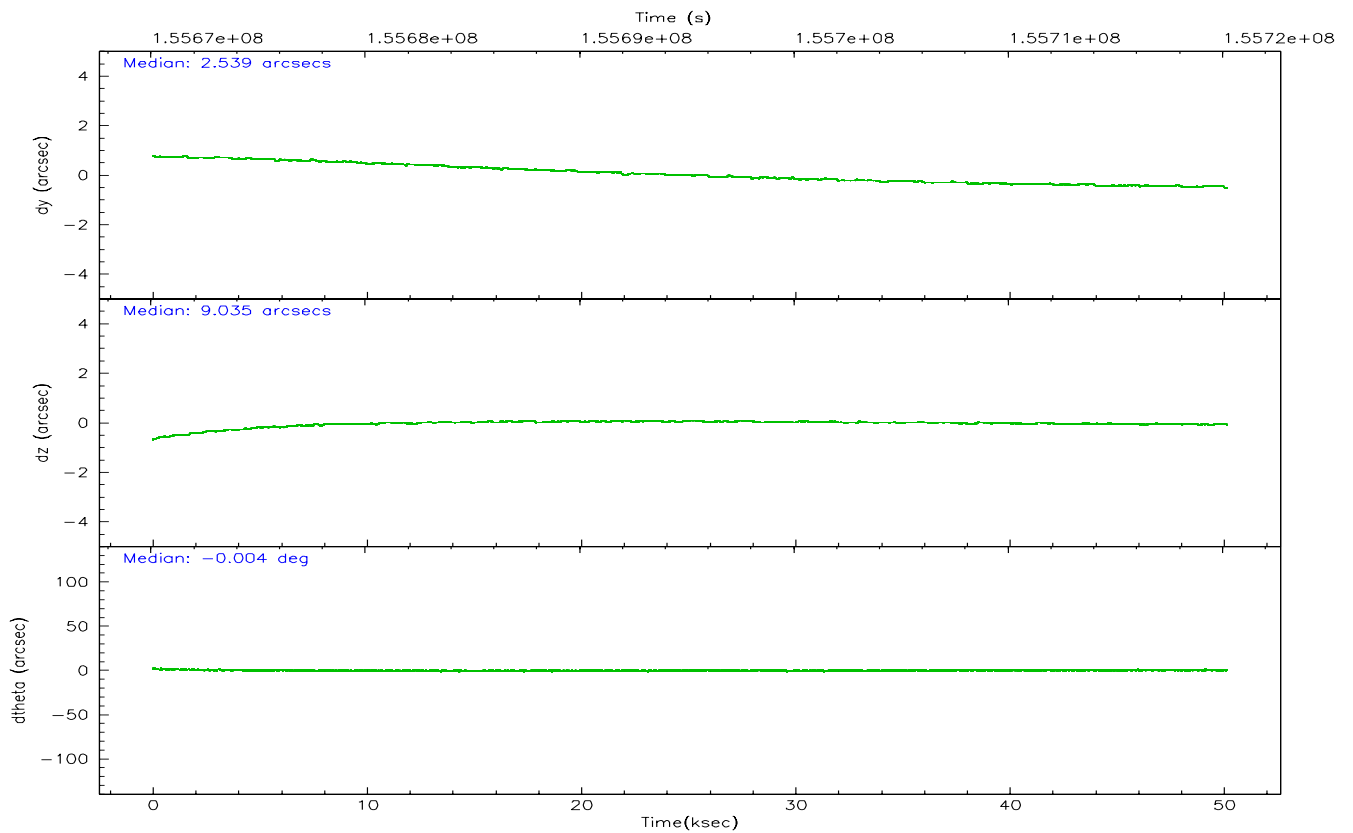
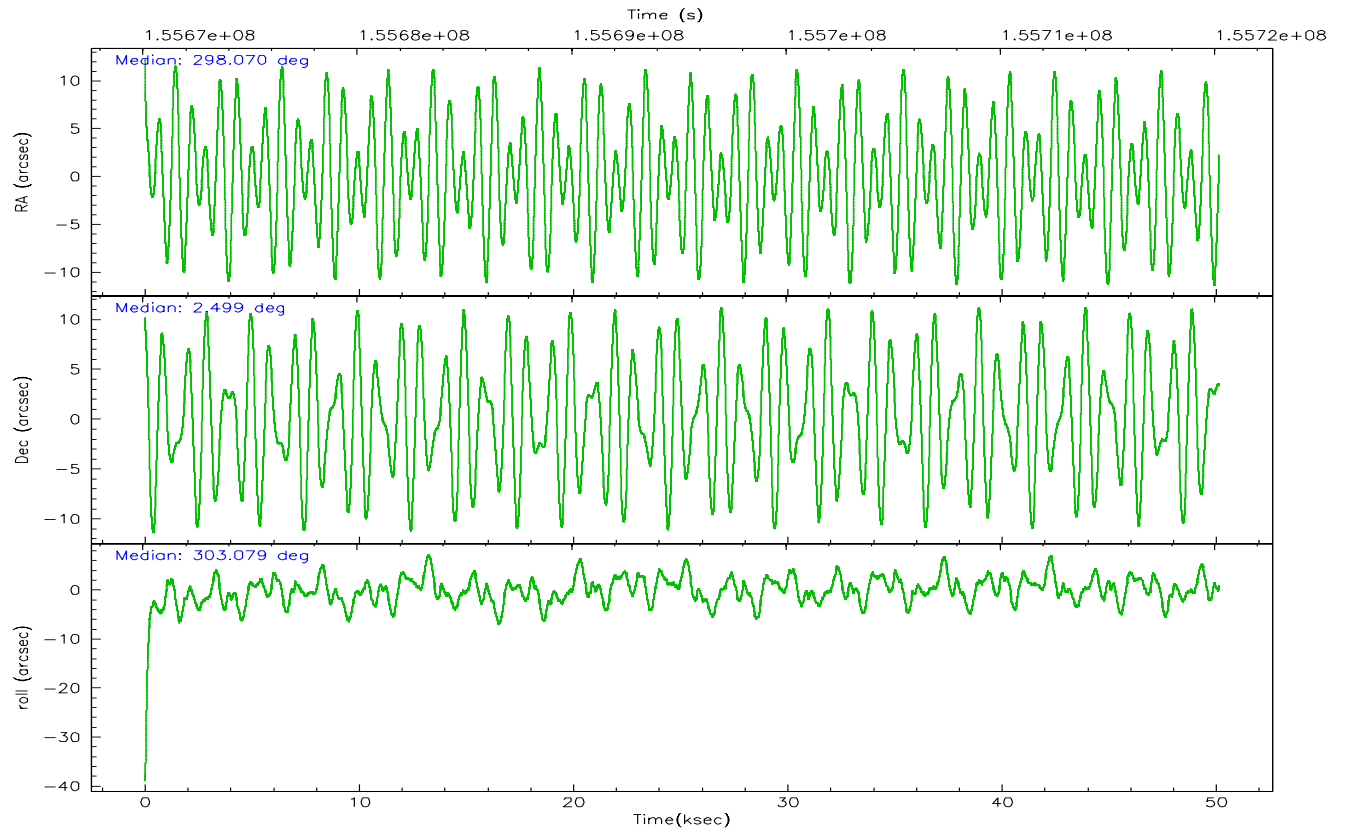
	ccd 3	ccd 6	ccd 7	ccd 8
grade 0 events	16979	16873	12451	26613
	5%	5%	2%	6%
grade 1 events	194	165	258	264
	0%	0%	0%	0%
grade 2 events	6804	7728	42792	18124
	2%	2%	9%	4%
grade 3 events	3636	3716	9560	8668
	1%	1%	2%	2%
grade 4 events	3654	3595	9315	8145
	1%	1%	2%	2%
grade 5 events	13257	14364	27038	18235
	4%	4%	6%	4%
grade 6 events	6195	7497	103081	21400
	1%	2%	23%	5%
grade 7 events	260628	267412	228759	296661
	83%	83%	52%	74%

2.2 Compared Parameters

Parameter	Planned	Actual	Parameter	Planned	Actual
Instrument	ACIS	ACIS	Obspar format version number	6	6
Detector	ACIS-3678	ACIS-3678	Obspar file type	PREDICTED	ACTUAL
Grating	NONE	NONE	Obspar update status	NONE	UPDATED
Data mode	FAINT	FAINT	Number of optional ACIS chips dropped	0	0
Observation mode	POINTING	POINTING	On-chip summing requested	N	N
Pointing RA	298.045985	298.0704348708939	Subarray requested	NONE	NONE
Pointing Dec	2.510870	2.498891178962654	Alternating exposures requested	N	N
Pointing Roll	302.927336	303.0828895323723	Primary exposure time	0.000000	3.1
SIM focus pos (mm)	-0.684267	-0.6828225247311905			
SIM defocus (mm)	0	0.001444936568705701			
SIM translation stage pos (mm)	-190.132523	-190.1400660498719			
SIM translation stage offset (mm)	0	0.00754346686406393			
Observation start time	155670222.184000	155669155.24223			
Observation start date	2002-12-07T17:42:38	2002-12-07T17:25:55			
Observation end time	155720222.184000	155720892.63189			
Observation end date	2002-12-08T07:35:58	2002-12-08T07:48:12			
Read mode	TIMED	TIMED			

2.3 Aspect



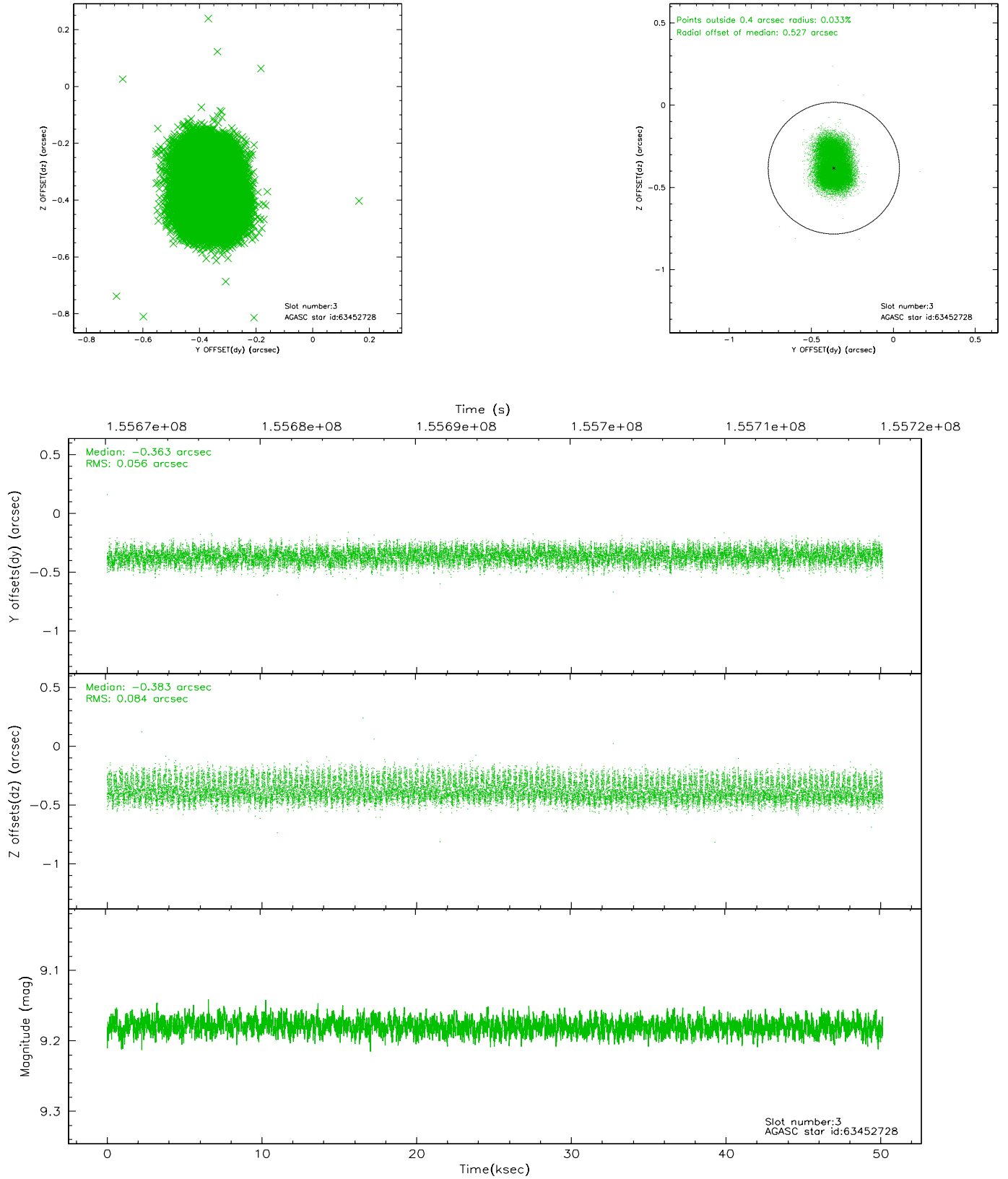


Slot Statistics

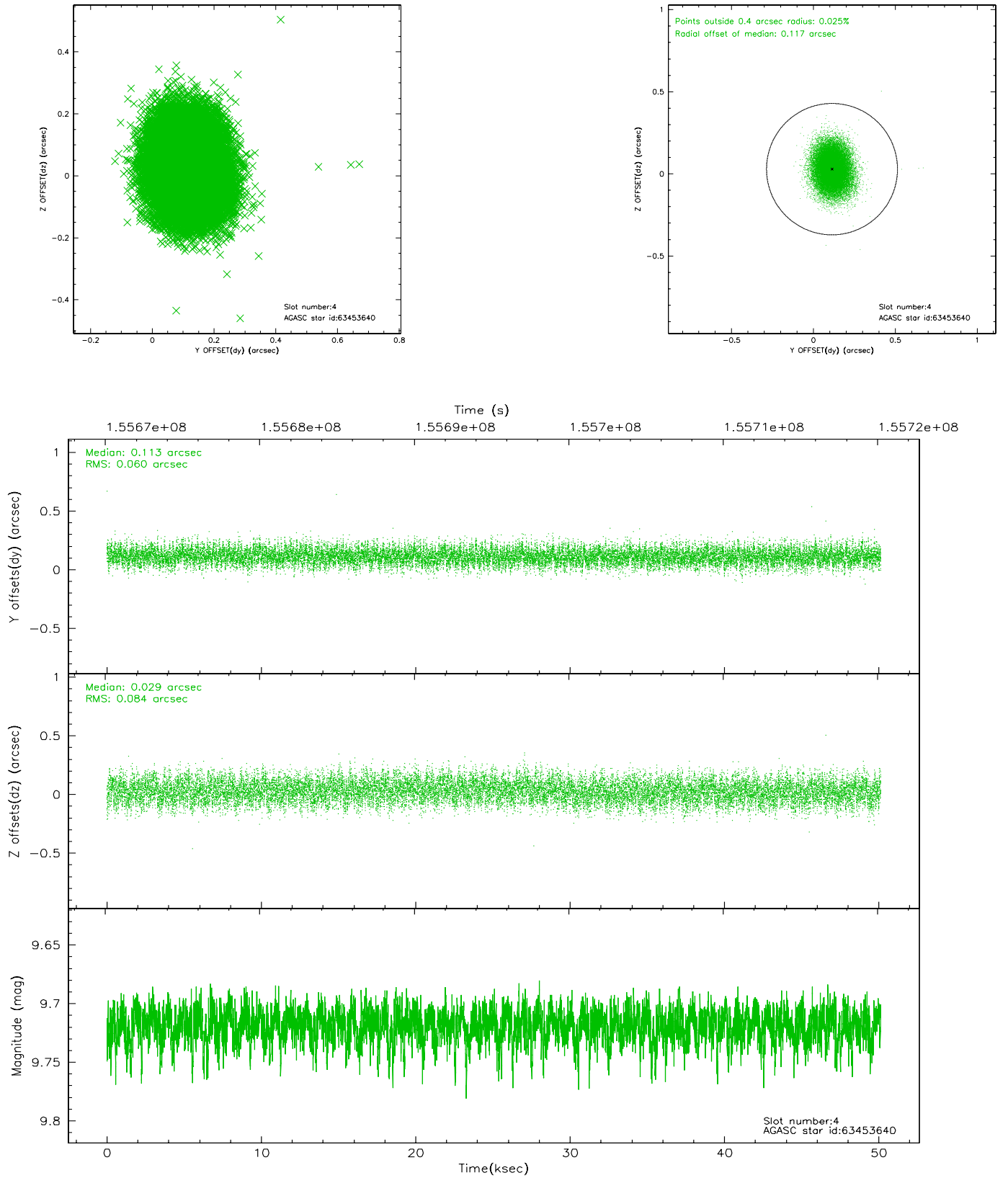
slot	status	id	mag	n_pts	med_dy	med_dz	dr1	dr2	ra	dec	mean_y	mean_z
0	FID	ACIS-S-2	7.10	12227	-0.018	0.013	0.012	0.018	0.000000	0.000000	-755.24	-1730.20
1	FID	ACIS-S-4	7.20	12226	-0.035	0.004	0.011	0.022	0.000000	0.000000	2158.02	178.30
2	FID	ACIS-S-5	7.24	12227	0.026	-0.010	0.013	0.028	0.000000	0.000000	-1808.07	171.92
3	GUIDE	63452728	9.18	24449	-0.363	-0.383	0.108	0.172	297.402432	2.584172	-1479.73	-1799.39
4	GUIDE	63453640	9.72	24444	0.113	0.029	0.110	0.178	297.397106	2.359818	-812.07	-2254.13
5	GUIDE	63575272	9.59	24440	0.076	0.153	0.121	0.195	298.400200	2.770435	-91.67	1577.45
6	GUIDE	63578768	8.92	24445	0.241	0.194	0.085	0.134	298.731461	2.440248	1553.69	1932.31
7	GUIDE	63570488	10.09	24437	-0.071	-0.001	0.160	0.259	298.270099	3.396021	-2236.69	2408.58

2.4 Star Slots

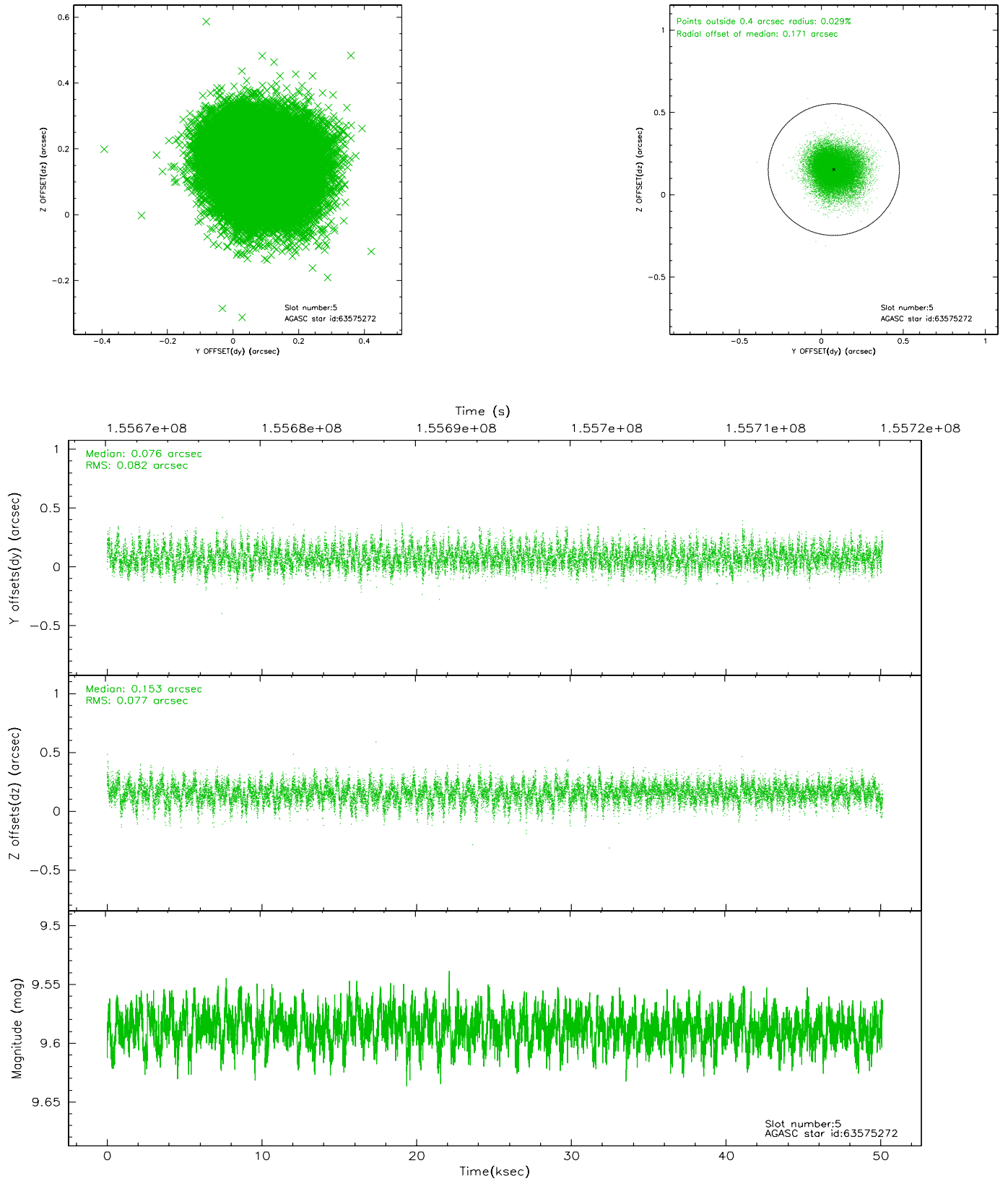
2.4.1 Slot 3



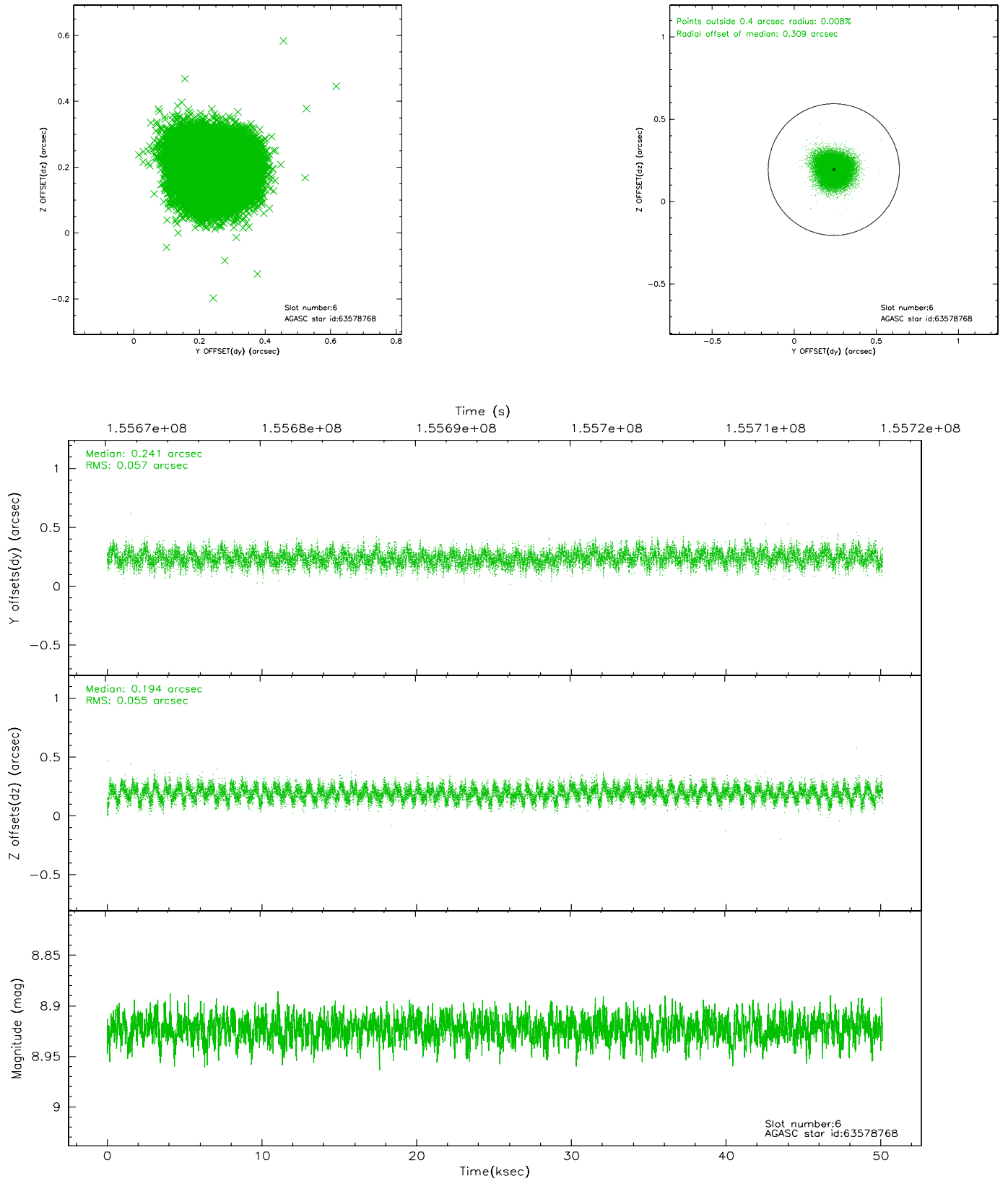
2.4.2 Slot 4



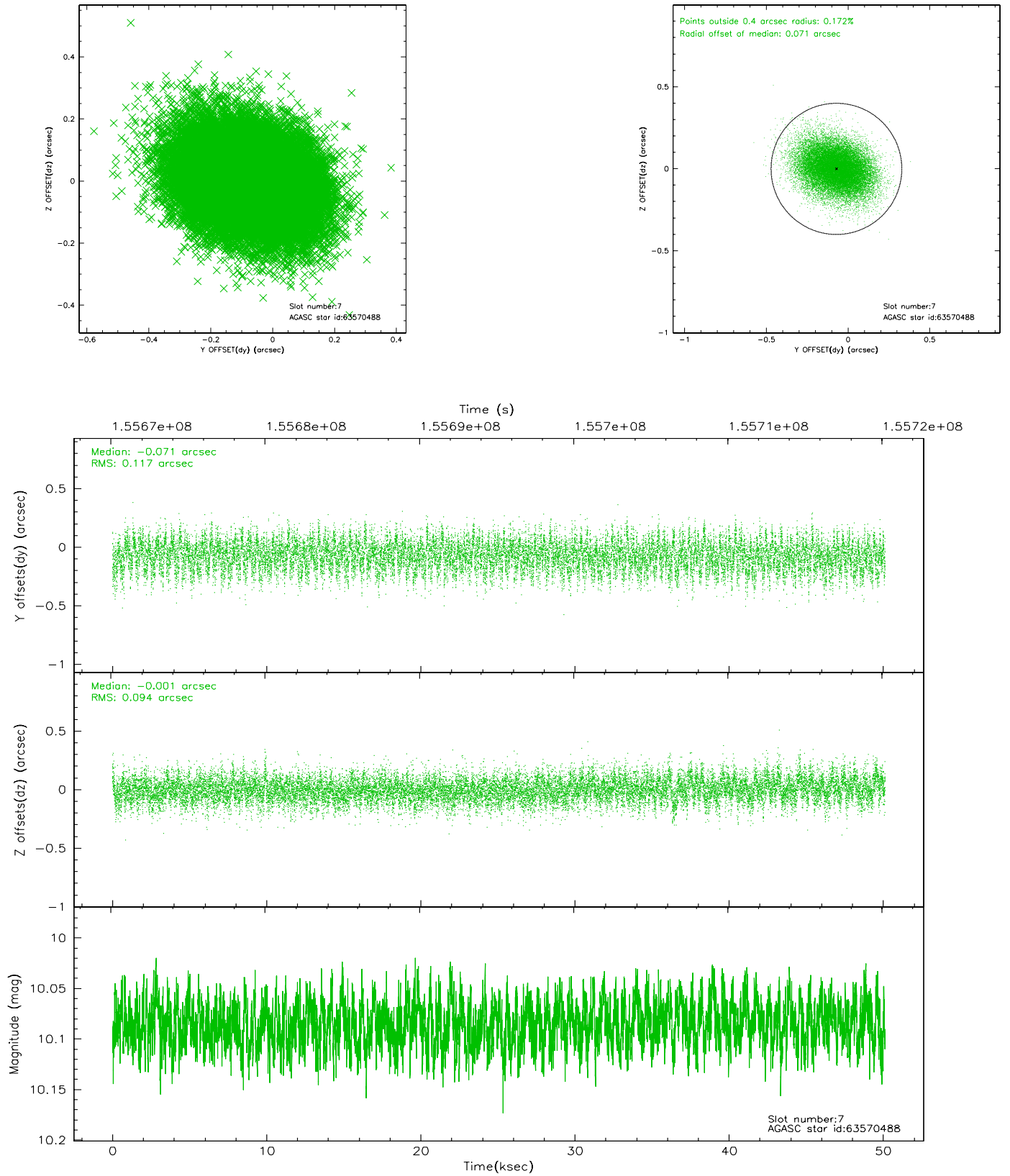
2.4.3 Slot 5



2.4.4 Slot 6

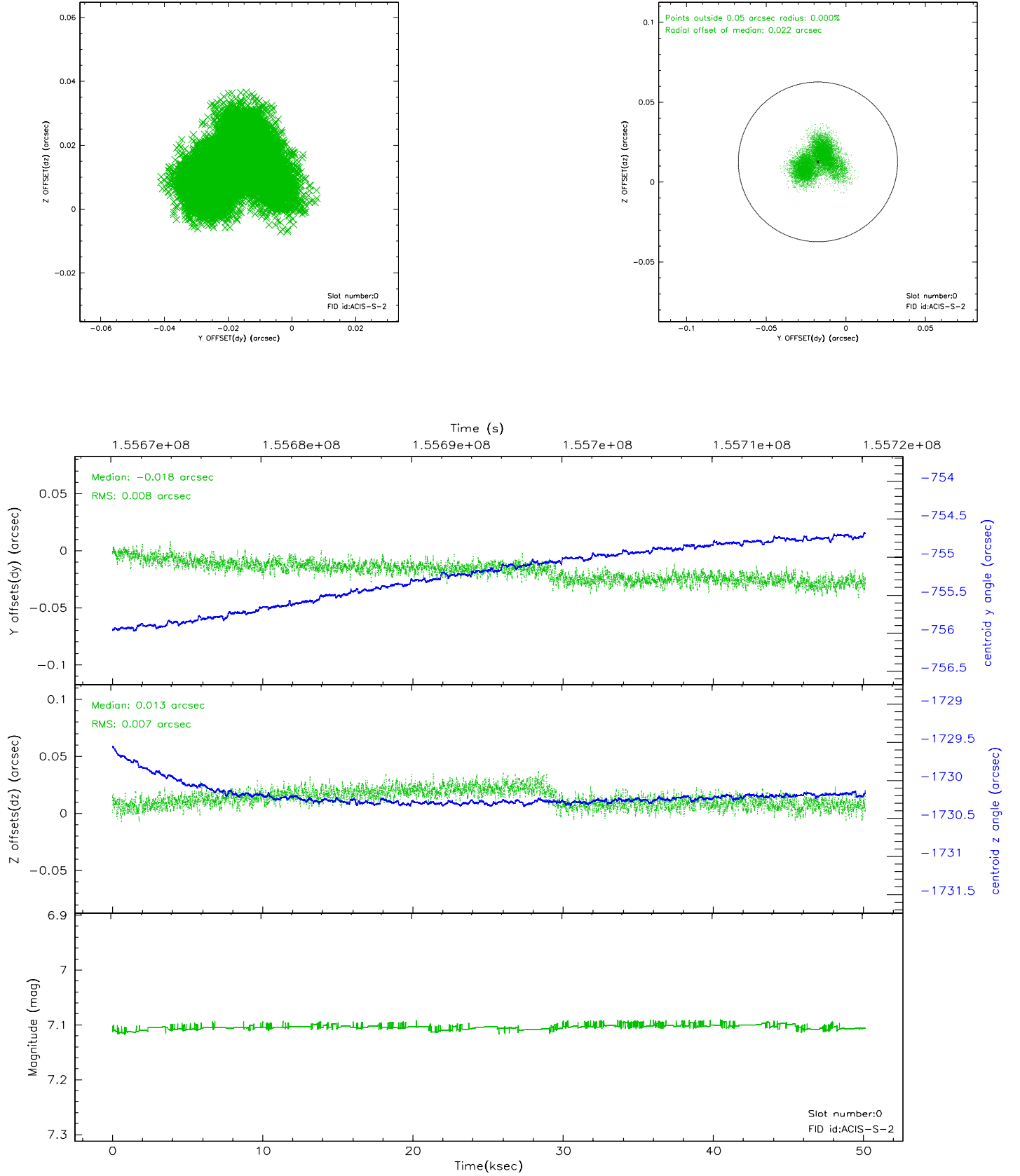


2.4.5 Slot 7

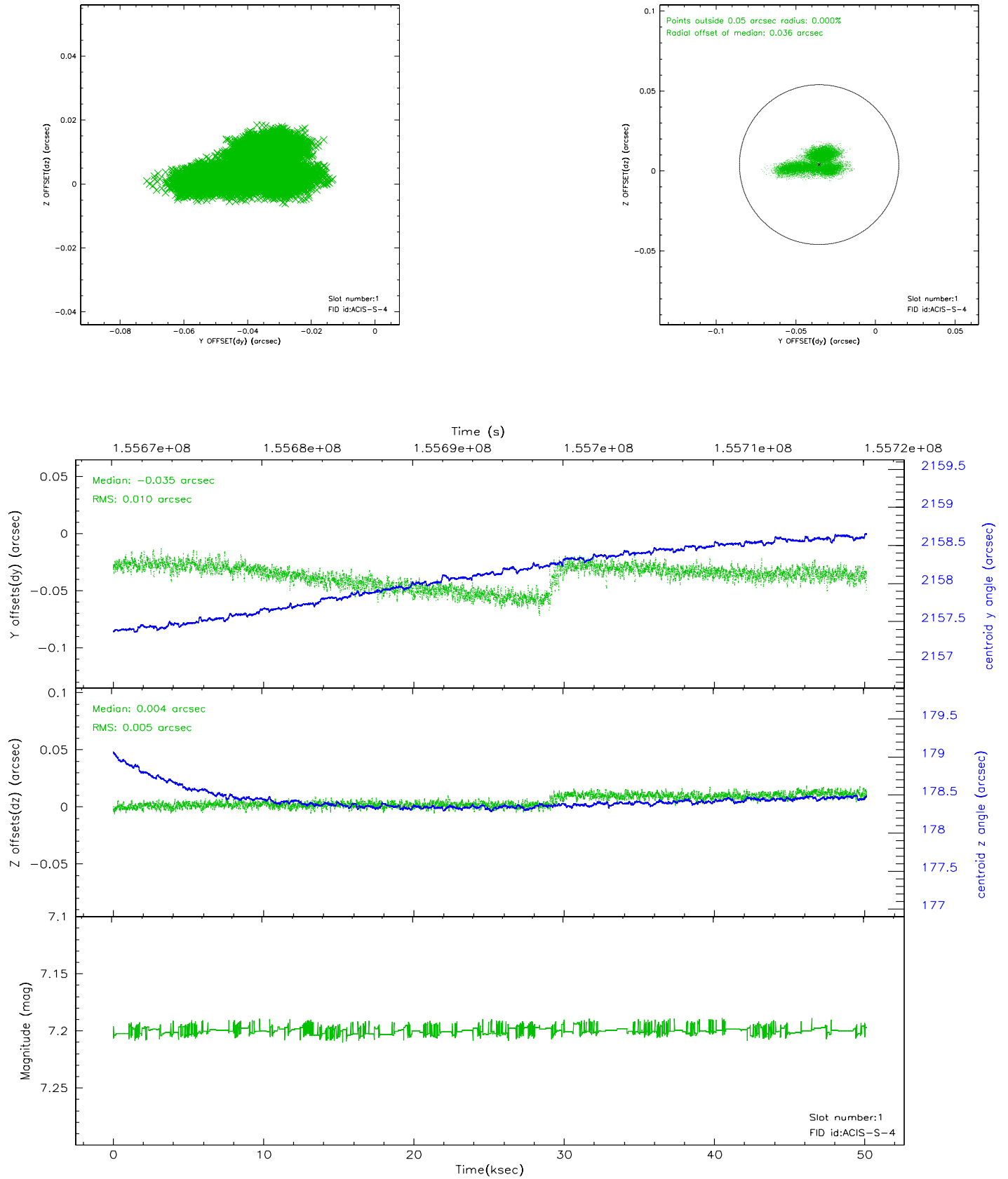


2.5 FID Slots

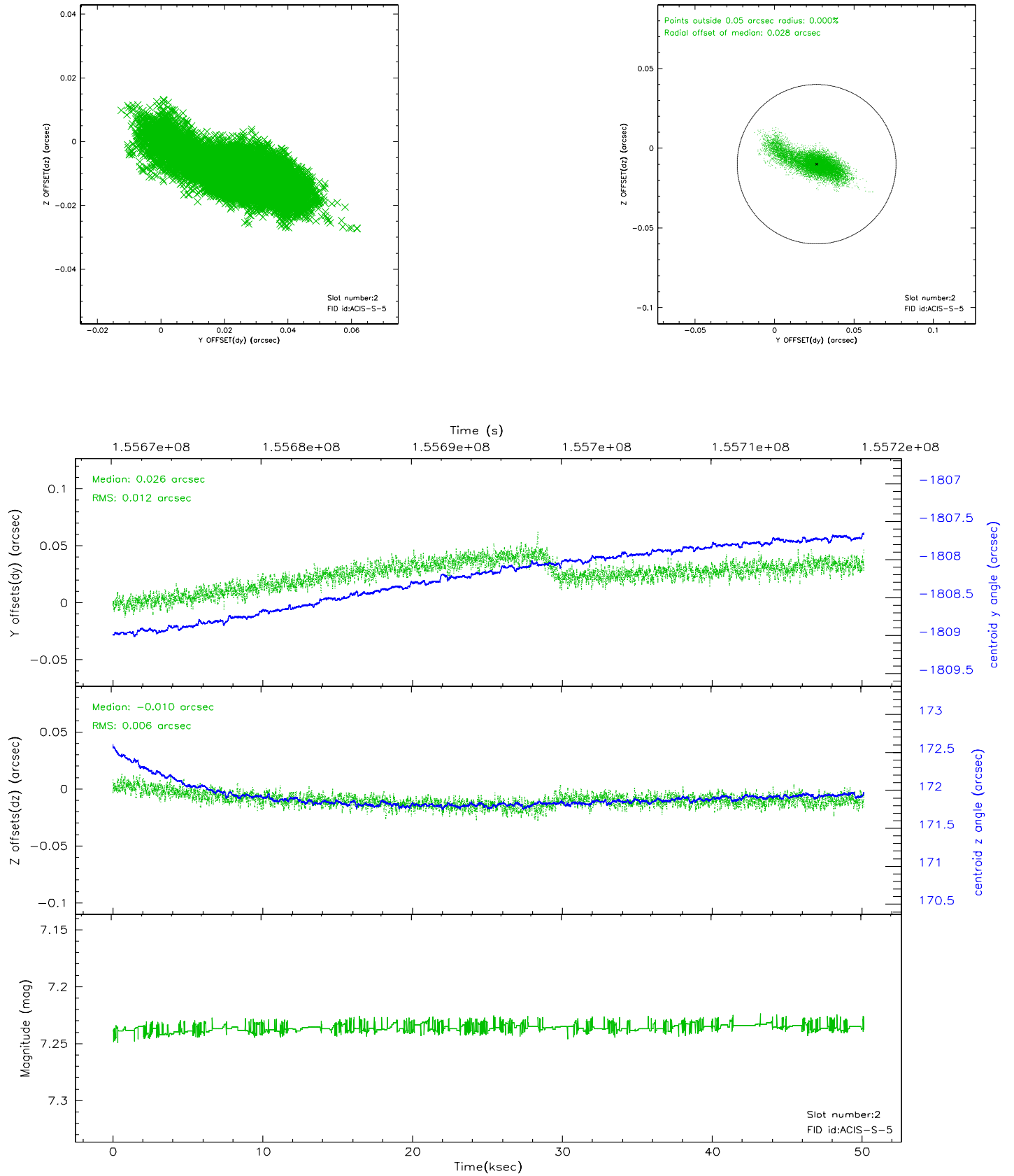
2.5.1 Slot 0



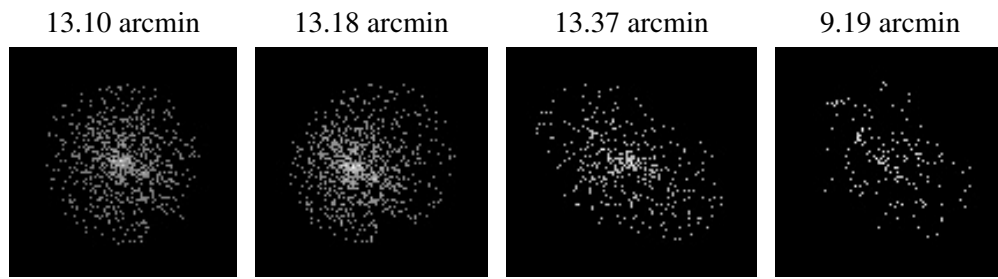
2.5.2 Slot 1



2.5.3 Slot 2



3 Point Sources



A Summary

A.1 Status

V&V Scientist	Beth Sundheim
V&V Date (YYYY-MM-DD)	2006.10.16
V&V Edition	1
V&V Disposition and Status	OK
V&V Charge Time	50.127

A.2 Comments