

V&V Reference Report

L2 ASCDS Version : 7.6.9

Observation 2964 - L2 Version 001
Chandra X-Ray Center

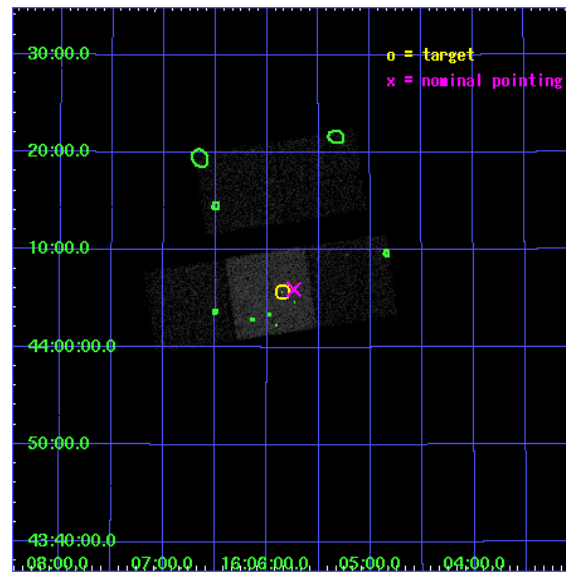
L2 Processing Date : Sep 16 2006

Contents

1	Front	2
2	OBI	3
2.1	OBI	3
2.1.1	Images	3
2.1.2	Bias	3
2.1.3	Parameters	4
2.1.4	Events	4
2.2	Compared Parameters	5
2.3	Aspect	6
2.4	Star Slots	9
2.4.1	Slot 3	9
2.4.2	Slot 4	10
2.4.3	Slot 5	11
2.4.4	Slot 6	12
2.4.5	Slot 7	13
2.5	FID Slots	14
2.5.1	Slot 0	14
2.5.2	Slot 1	15
2.5.3	Slot 2	16
3	Point Sources	17
A	Summary	18
A.1	Status	18
A.2	Comments	18

1 Front

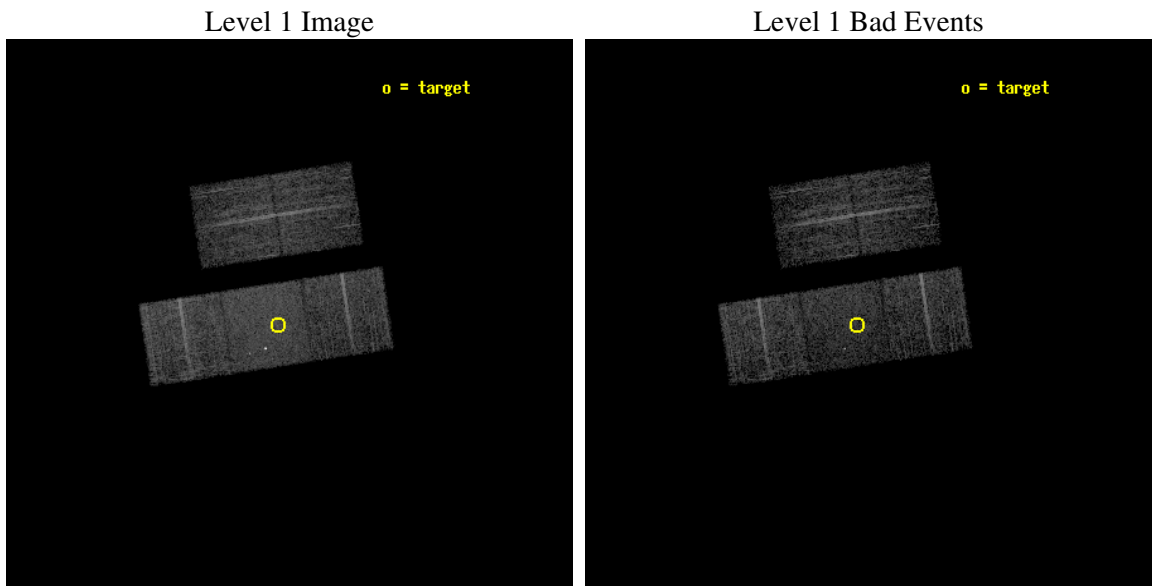
seq_num	700403
obs_id	2964
title	A SNAPSHOT SURVEY OF THE OPTICALLY SELECTED TYPE-2 QUASARS
observer	PROF. S. DJORGOVSKI
object	PSS 1605+4405
dtcycle	0
cycle	P
ra_targ	241.462917
dec_targ	44.094722
ra_nom	241.43479705488
dec_nom	44.099494019189
roll_nom	171.33637051597
revision	2
ontime	5183.1999900341
livetime	5115.477666348
ontime2	5183.1999900341
ontime3	5183.1999900341
ontime6	5183.1999900341
ontime7	5183.1999900341
ontime8	5183.1999900341
l2events	32350



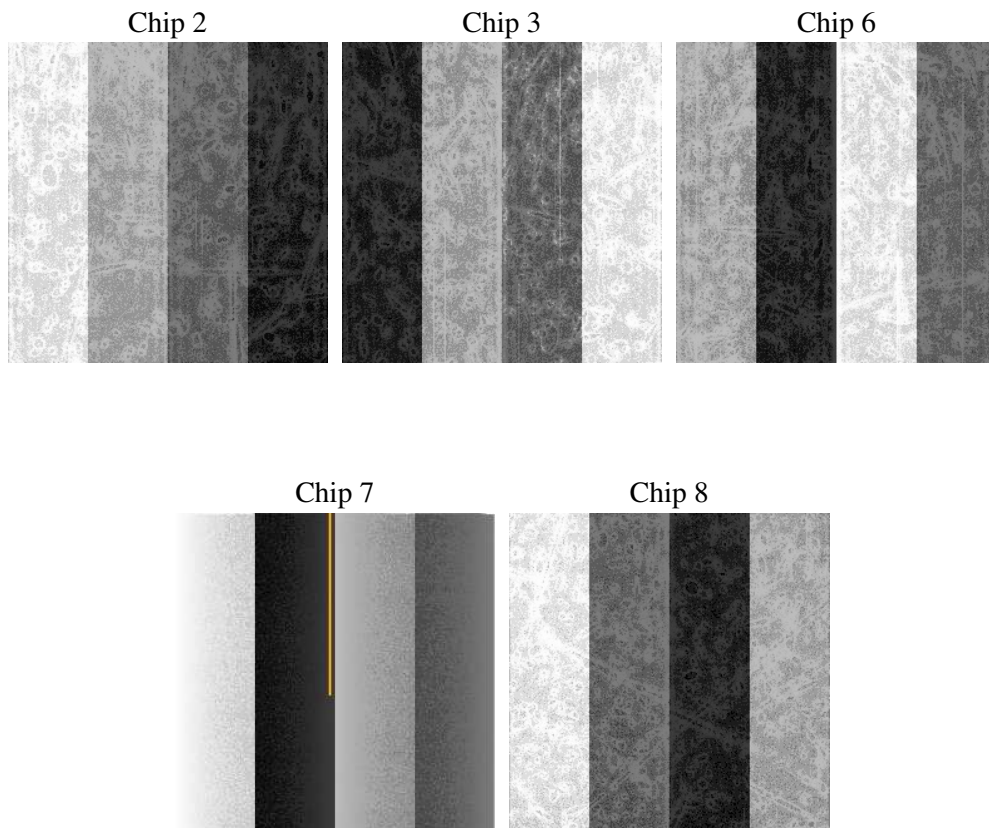
2 OBI

2.1 OBI

2.1.1 Images



2.1.2 Bias



2.1.3 Parameters

obi_num	3
ascdsver	7.6.9
caldsver	3.2.3
date	2006-09-16T13:38:35
revision	2

sched_exp_time	5000.000000
ontime	5433.9380519688
ontime2	5437.0790620148
ontime3	5437.0790620148
ontime6	5433.9380220175
ontime7	5433.9380519688
ontime8	5437.0790421069
l1events	201650

2.1.4 Events

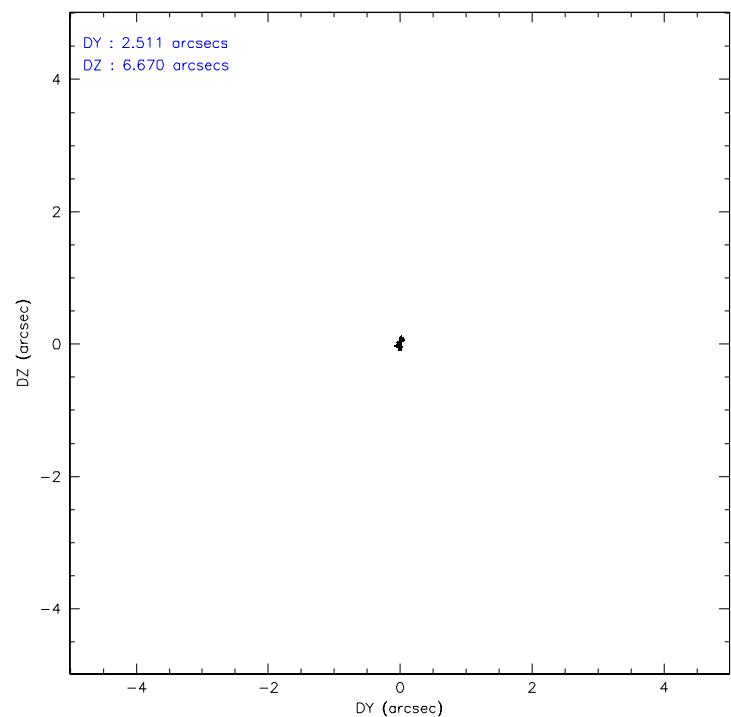
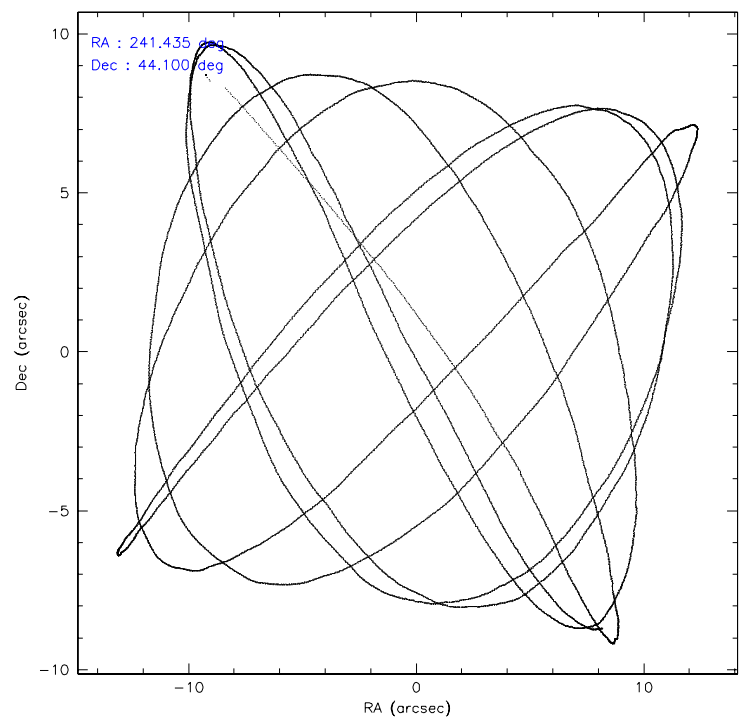
	ccd 2	ccd 3	ccd 6	ccd 7	ccd 8
level 1 events	34657	35339	36904	47959	46791
rejected events	30793	31468	32953	29113	38339
rejected %	88%	89%	89%	60%	81%

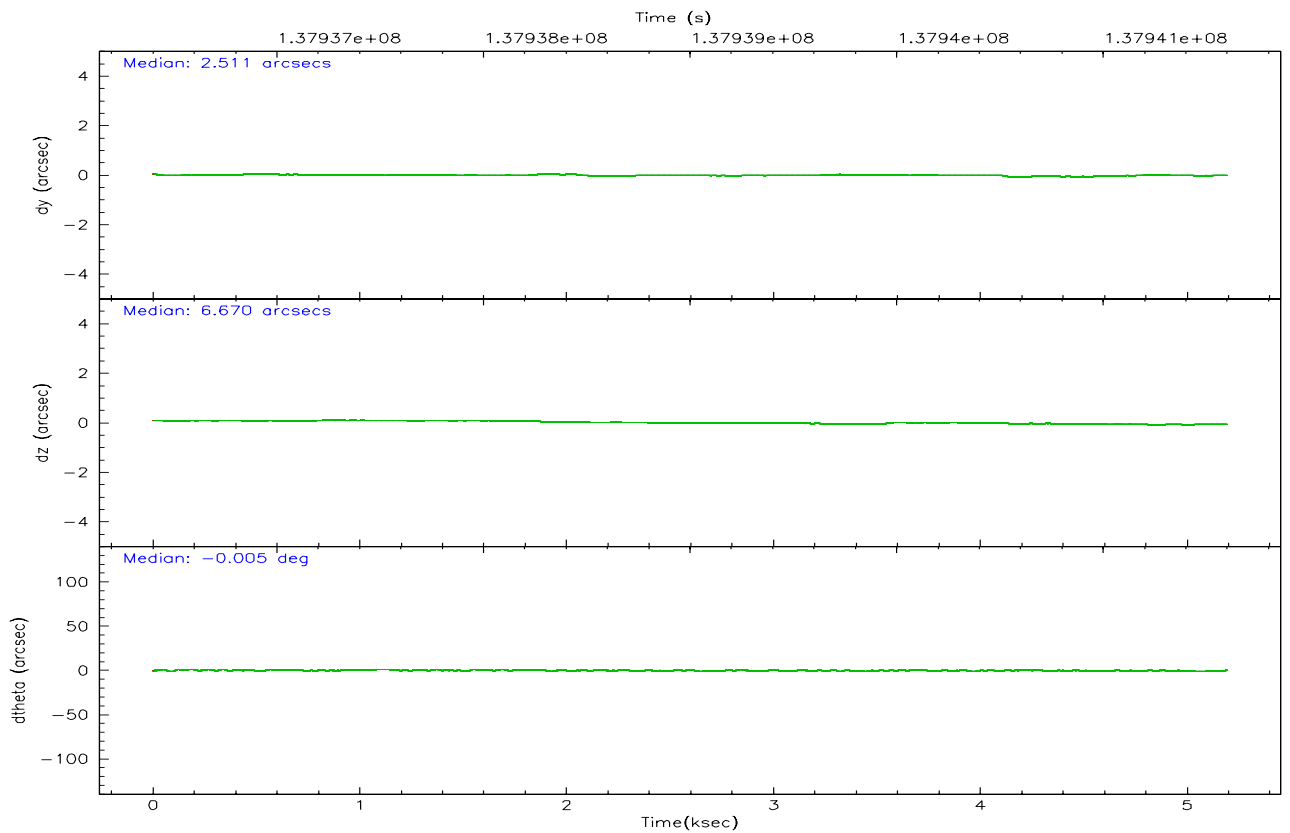
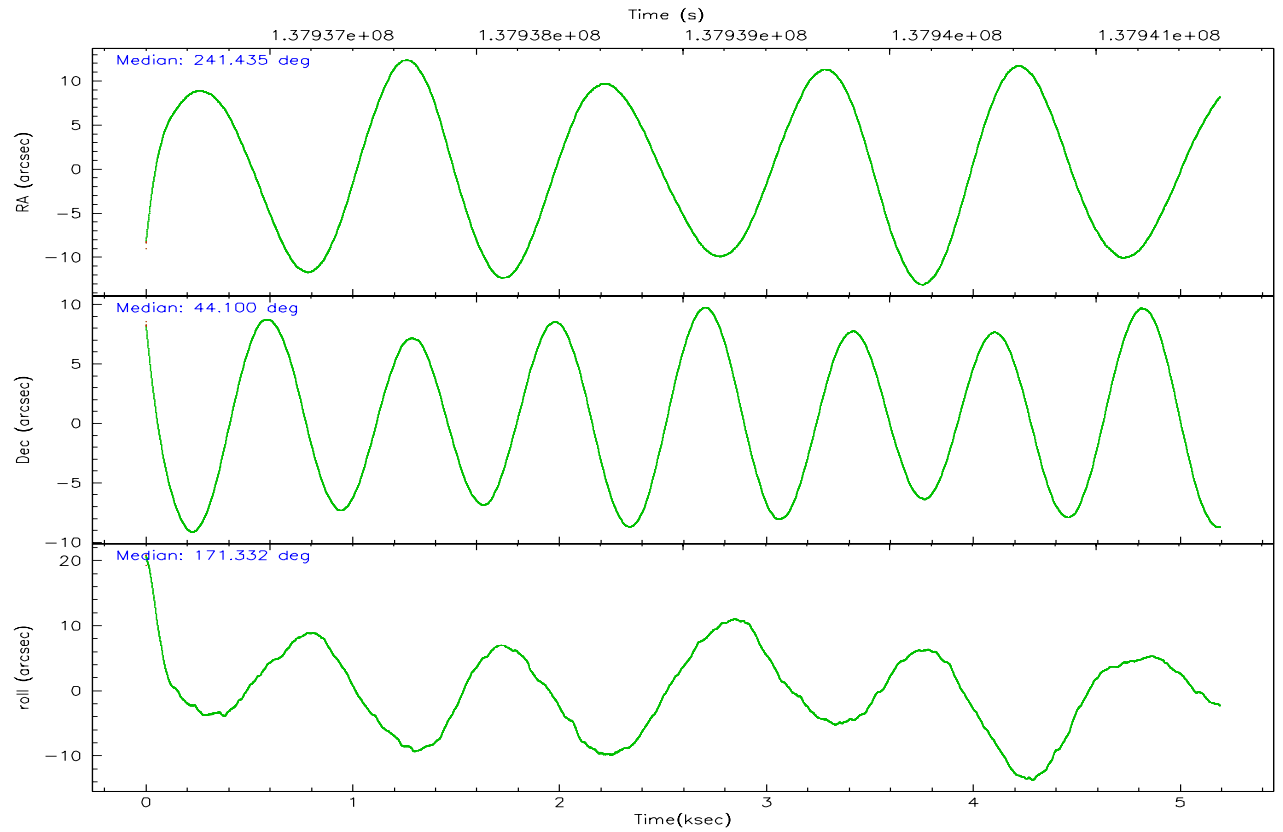
	ccd 2	ccd 3	ccd 6	ccd 7	ccd 8
grade 0 events	1683	1727	1632	1803	2813
	4%	4%	4%	3%	6%
grade 1 events	17	13	21	84	18
	0%	0%	0%	0%	0%
grade 2 events	891	784	821	4908	1903
	2%	2%	2%	10%	4%
grade 3 events	423	387	430	1133	945
	1%	1%	1%	2%	2%
grade 4 events	390	373	424	1088	891
	1%	1%	1%	2%	1%
grade 5 events	1260	1378	1531	3175	1956
	3%	3%	4%	6%	4%
grade 6 events	666	768	837	10756	2217
	1%	2%	2%	22%	4%
grade 7 events	29327	29909	31208	25012	36048
	84%	84%	84%	52%	77%

2.2 Compared Parameters

Parameter	Planned	Actual	Parameter	Planned	Actual
Instrument	ACIS	ACIS	Obspar format version number	6	6
Detector	ACIS-23678	ACIS-23678	Obspar file type	PREDICTED	ACTUAL
Grating	NONE	NONE	Obspar update status	NONE	UPDATED
Data mode	FAINT	FAINT	Number of optional ACIS chips dropped	0	0
Observation mode	POINTING	POINTING	On-chip summing requested	N	N
Pointing RA	241.469935	241.4347970548785	Subarray requested	NONE	NONE
Pointing Dec	44.109789	44.09949401918882	Alternating exposures requested	N	N
Pointing Roll	171.155267	171.3363705159724	Primary exposure time	0.000000	3.1
SIM focus pos (mm)	-0.684267	-0.6828225247311905			
SIM defocus (mm)	0	0.001444936568705701			
SIM translation stage pos (mm)	-190.132523	-190.1425803651734			
SIM translation stage offset (mm)	0	0.01005778216563158			
Observation start time	137936593.184000	137935468.07316			
Observation start date	2002-05-16T11:42:09	2002-05-16T11:24:28			
Observation end time	137941593.184000	137942500.08595			
Observation end date	2002-05-16T13:05:29	2002-05-16T13:21:40			
Read mode	TIMED	TIMED			

2.3 Aspect



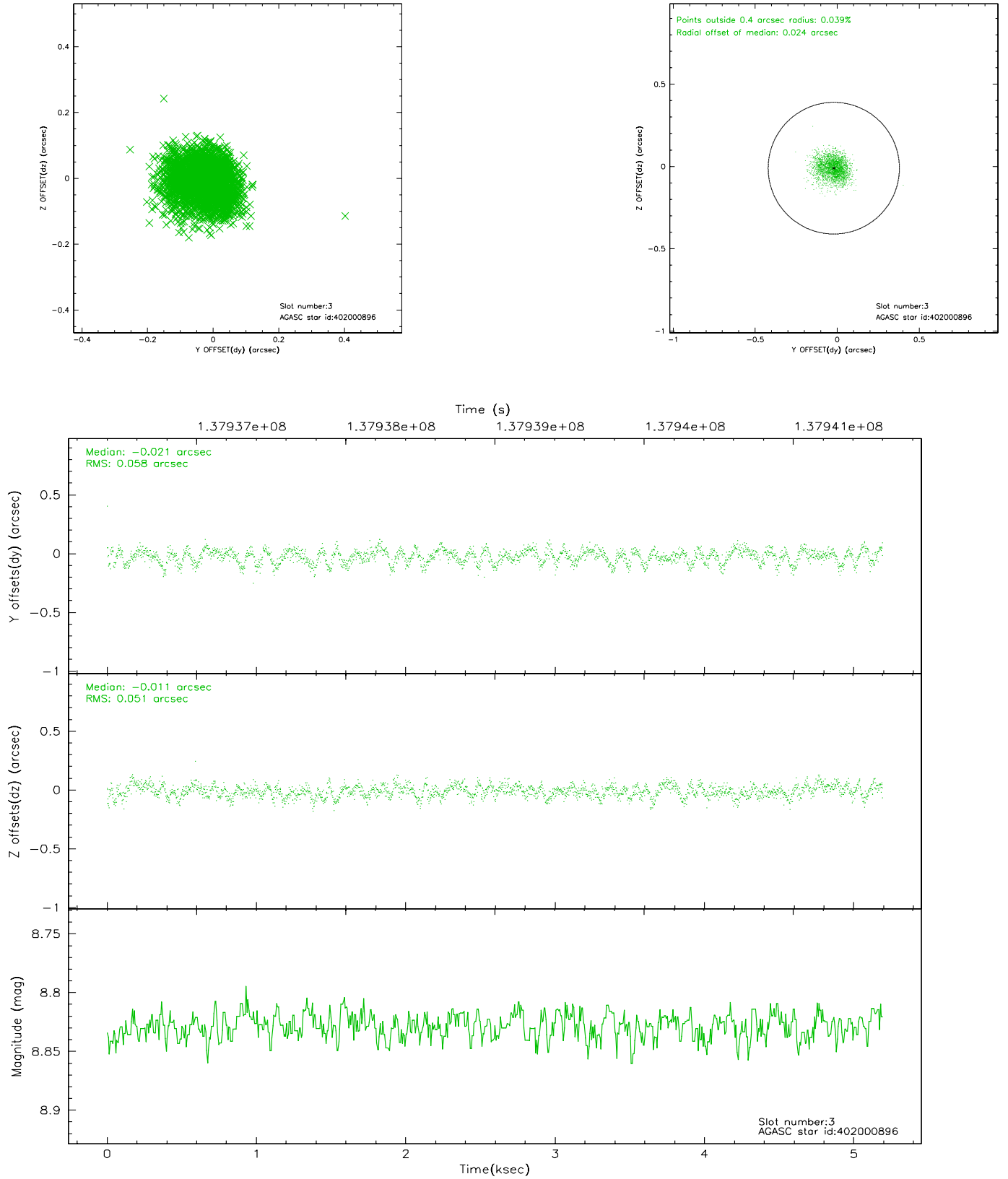


Slot Statistics

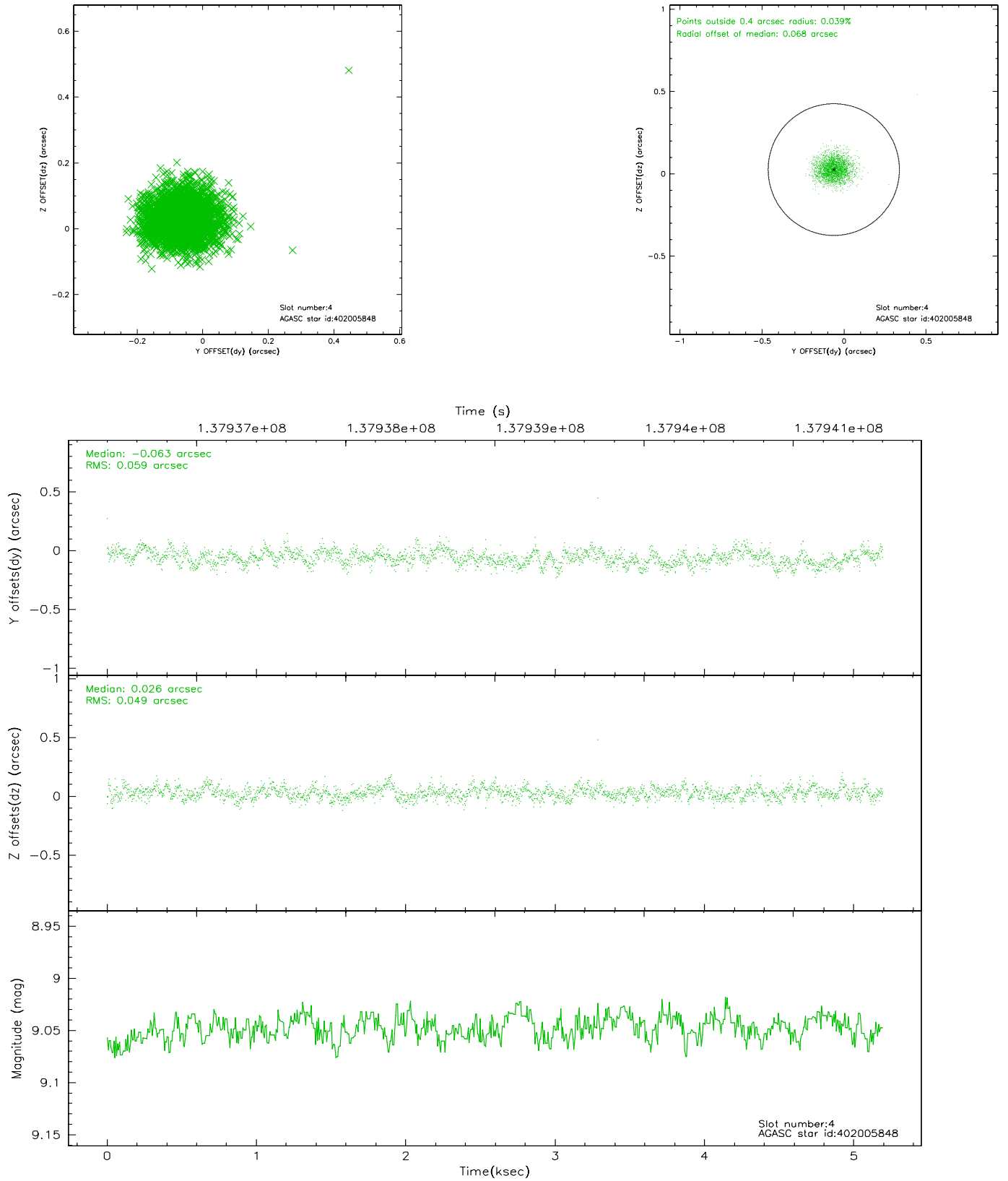
slot	status	id	mag	n_pts	med_dy	med_dz	dr1	dr2	ra	dec	mean_y	mean_z
0	FID	ACIS-S-2	7.12	1267	-0.017	0.034	0.008	0.013	0.000000	0.000000	-755.13	-1727.77
1	FID	ACIS-S-4	7.20	1266	-0.077	-0.001	0.006	0.010	0.000000	0.000000	2157.53	179.51
2	FID	ACIS-S-5	7.24	1266	0.063	-0.024	0.006	0.011	0.000000	0.000000	-1806.41	174.44
3	GUIDE	402000896	8.83	2532	-0.021	-0.011	0.083	0.132	241.290106	43.612704	188.05	1839.88
4	GUIDE	402005848	9.05	2532	-0.063	0.026	0.080	0.133	240.541350	43.894877	2263.72	1122.70
5	GUIDE	401999232	9.01	2534	0.025	-0.052	0.097	0.164	240.791288	44.752735	2072.69	-2026.94
6	GUIDE	402003648	9.44	2531	0.024	0.094	0.094	0.150	241.967706	44.138441	-1253.16	-304.36
7	GUIDE	401998128	9.60	2532	0.046	-0.057	0.115	0.190	240.843501	44.839280	1984.91	-2355.26

2.4 Star Slots

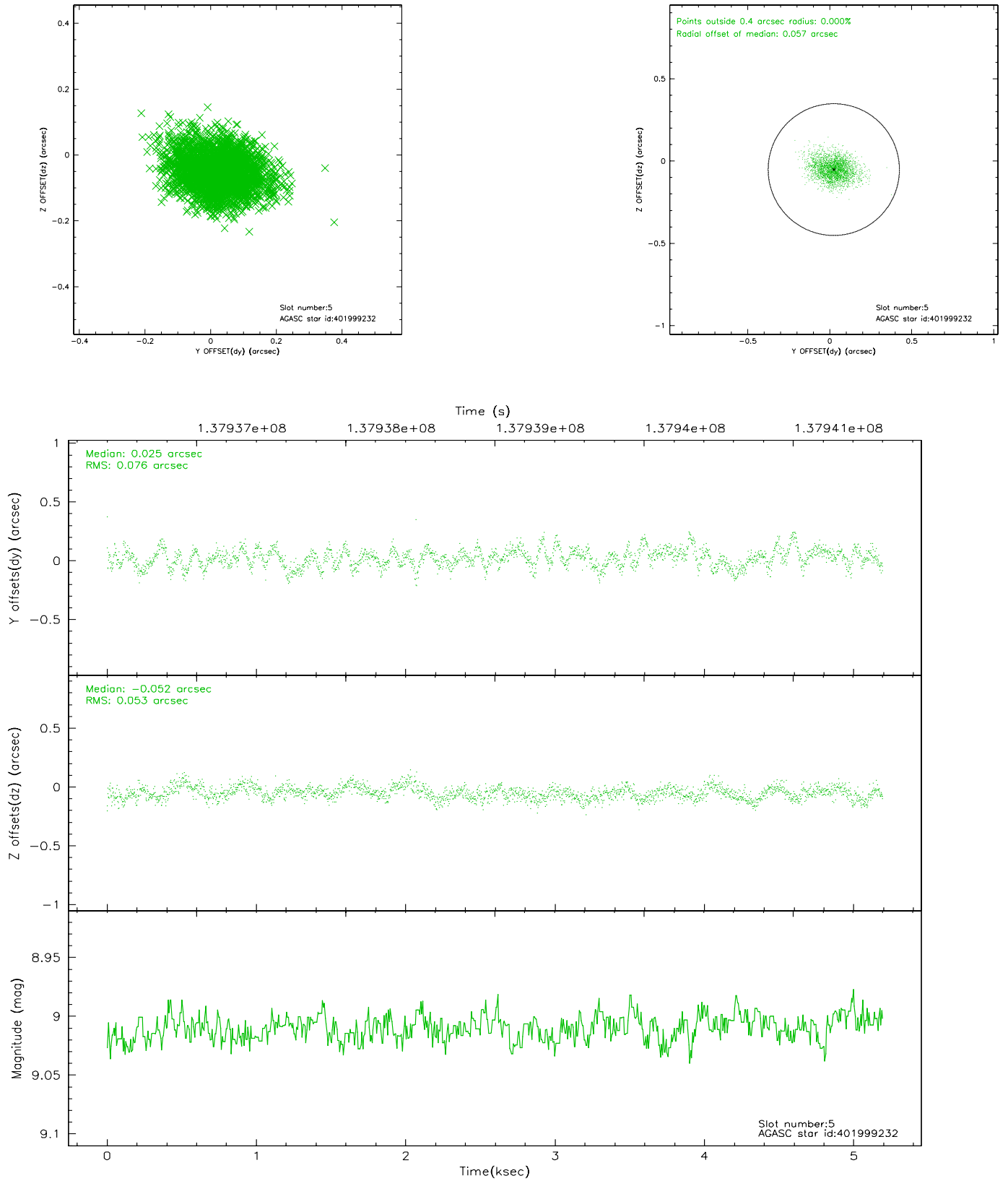
2.4.1 Slot 3



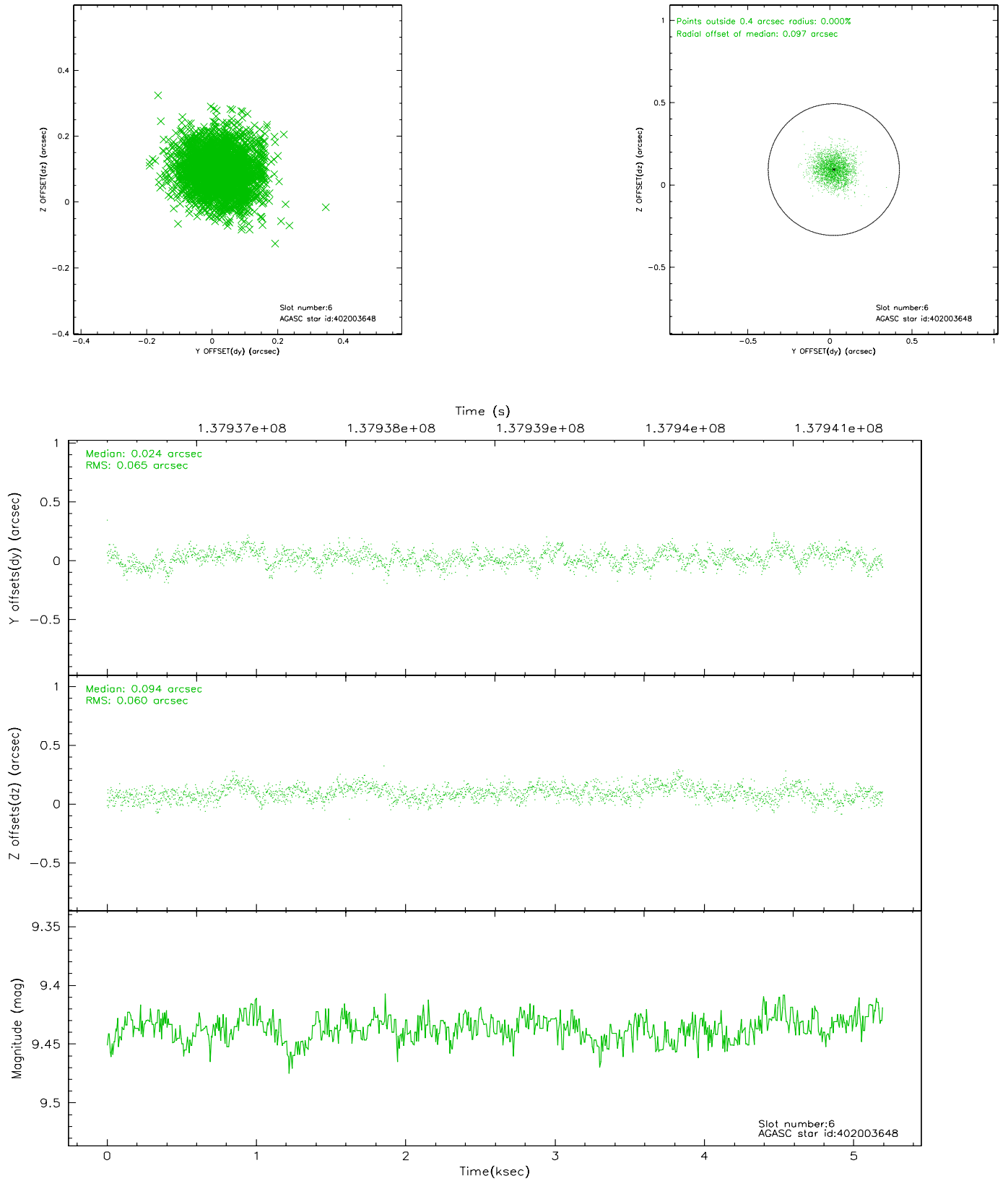
2.4.2 Slot 4



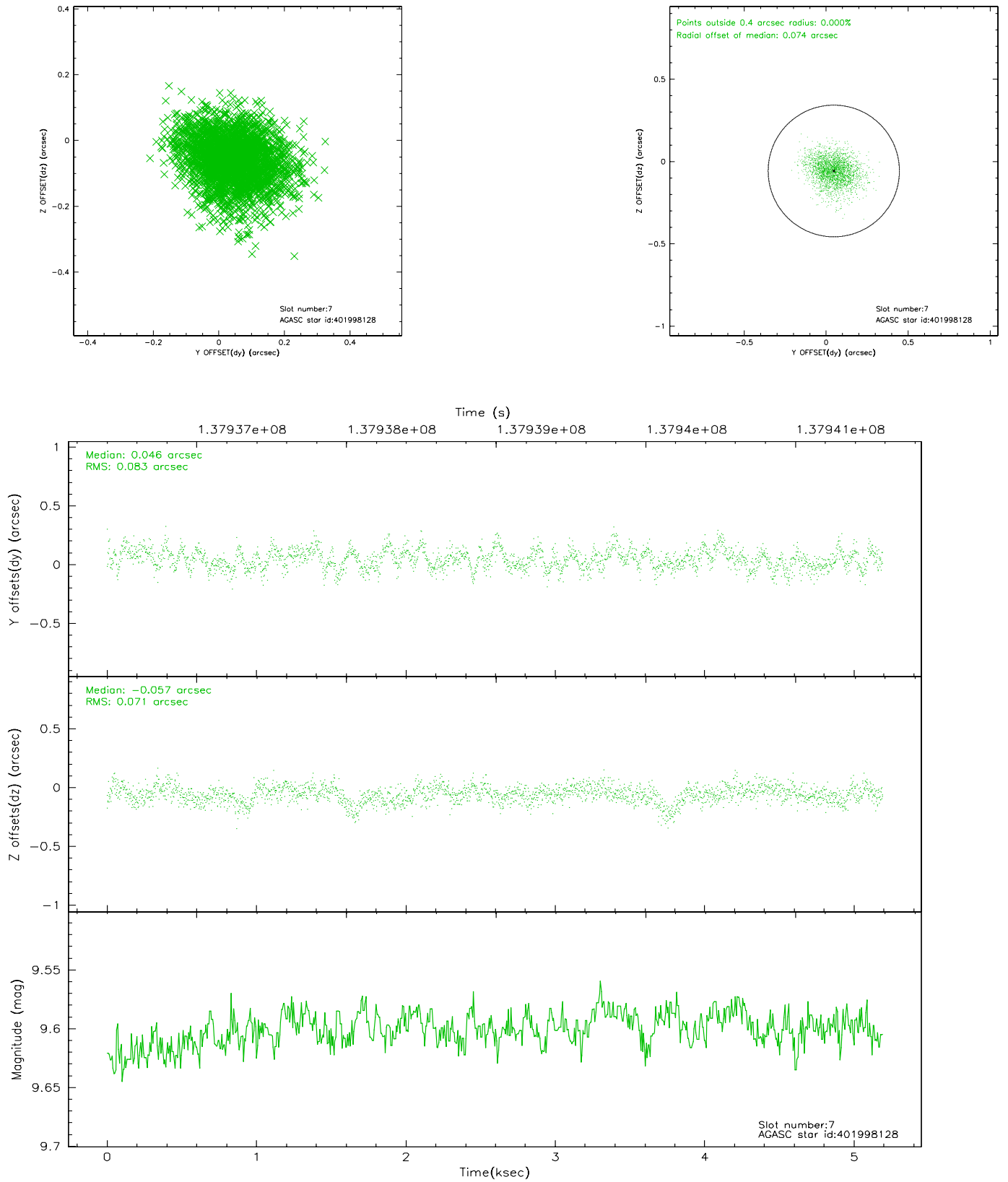
2.4.3 Slot 5



2.4.4 Slot 6

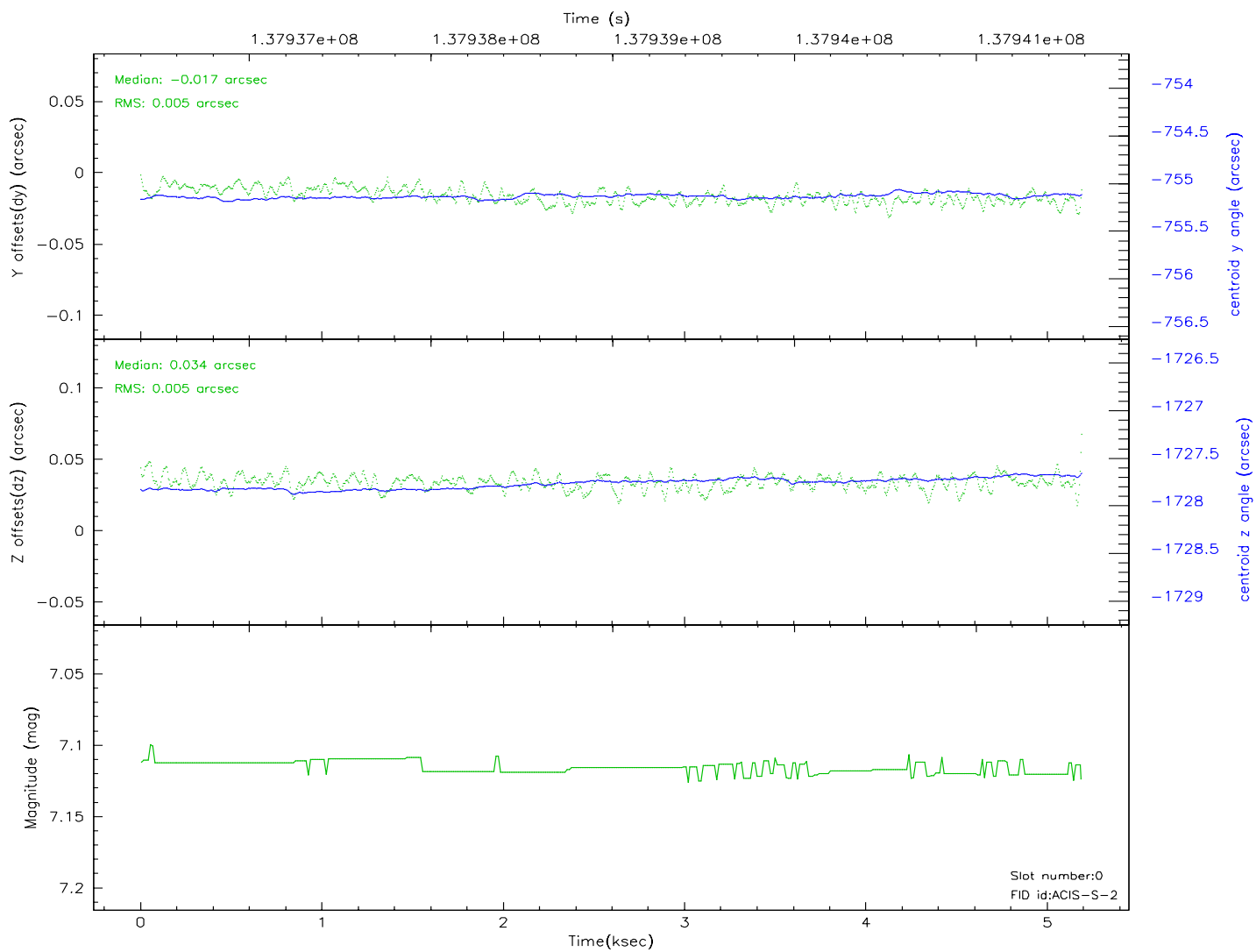
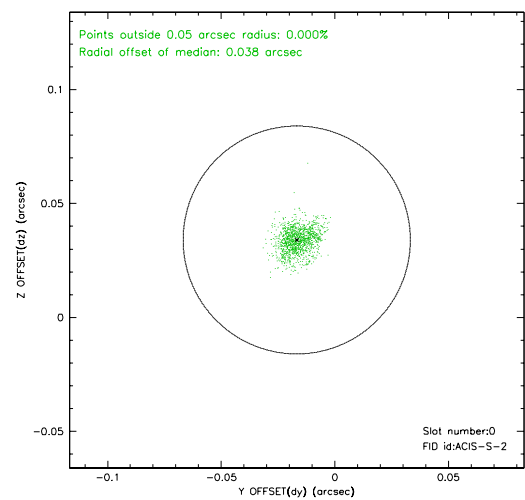
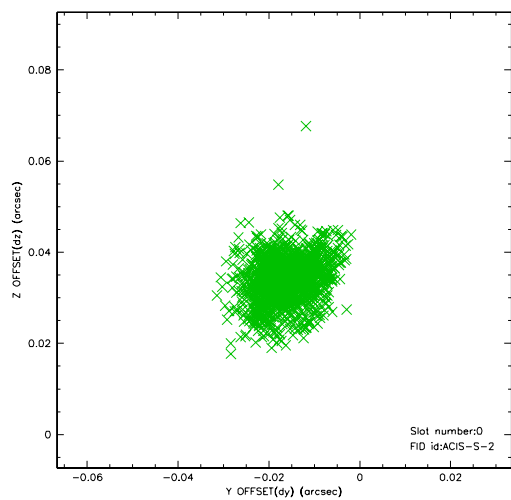


2.4.5 Slot 7

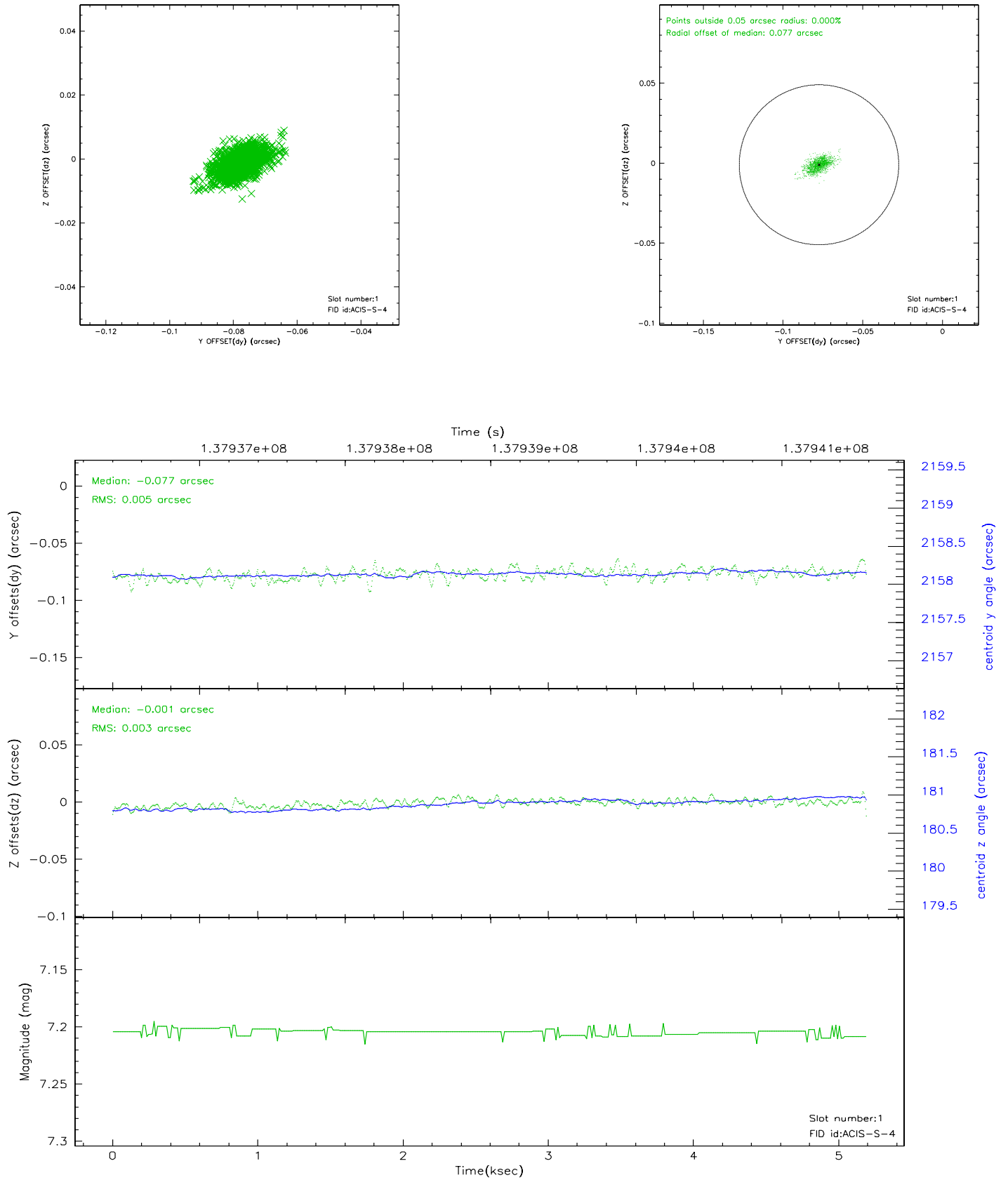


2.5 FID Slots

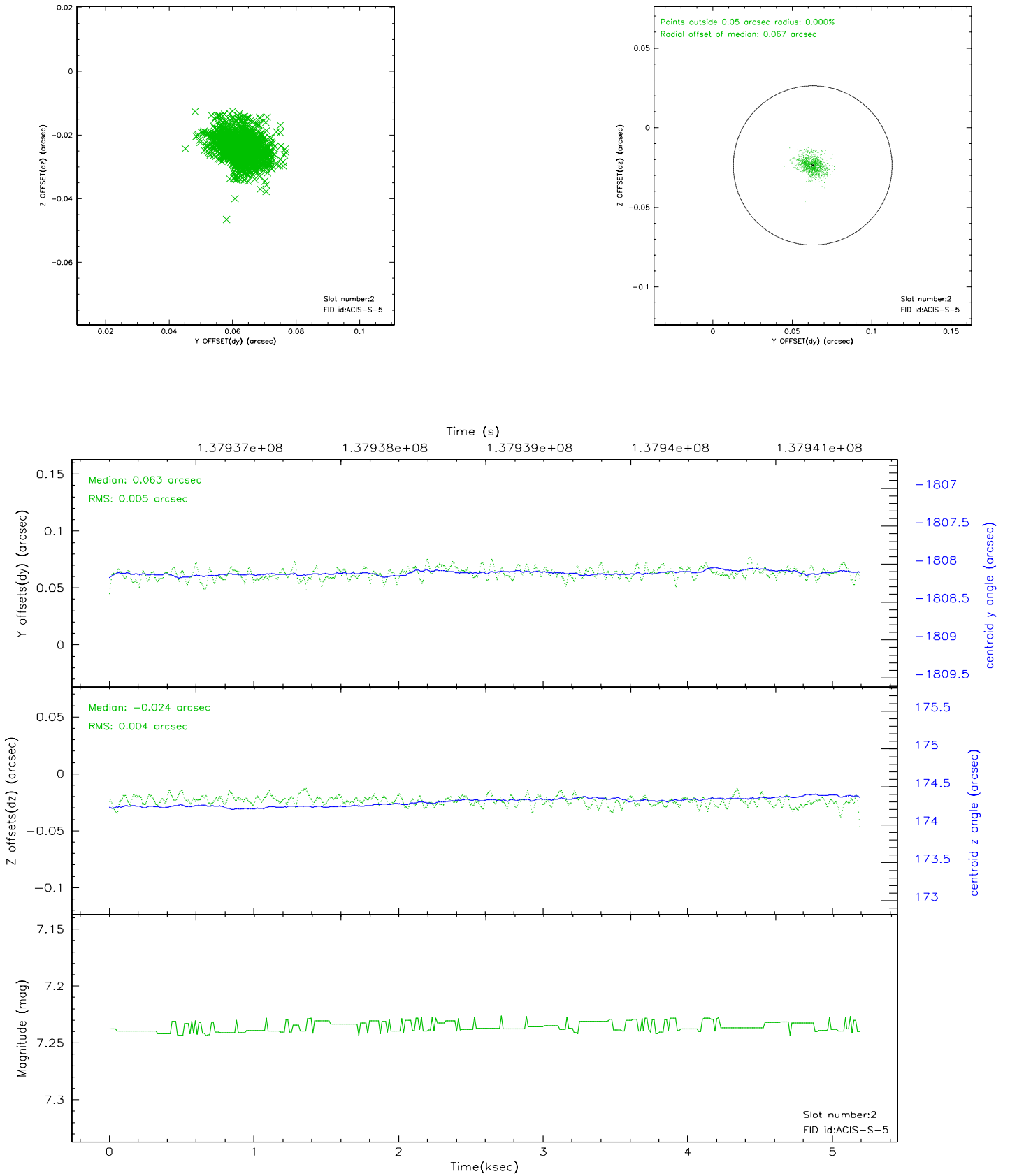
2.5.1 Slot 0



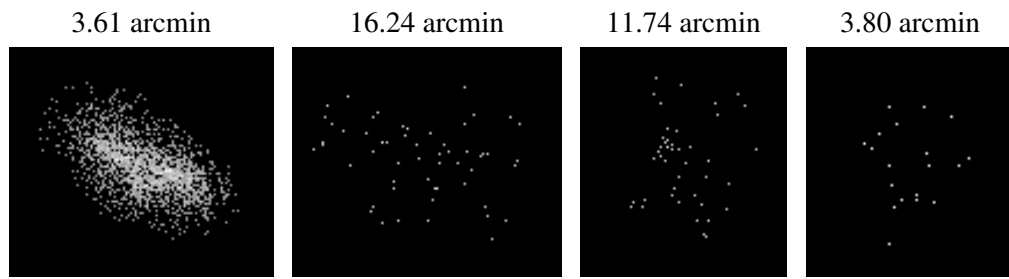
2.5.2 Slot 1



2.5.3 Slot 2



3 Point Sources



A Summary

A.1 Status

V&V Scientist	Jen Lauer
V&V Date (YYYY-MM-DD)	2006.09.18
V&V Edition	1
V&V Disposition and Status	OK
V&V Charge Time	5.183

A.2 Comments