

# V&V Reference Report

## L2 ASCDS Version : 7.6.10

Observation 2958 - L2 Version 001  
Chandra X-Ray Center

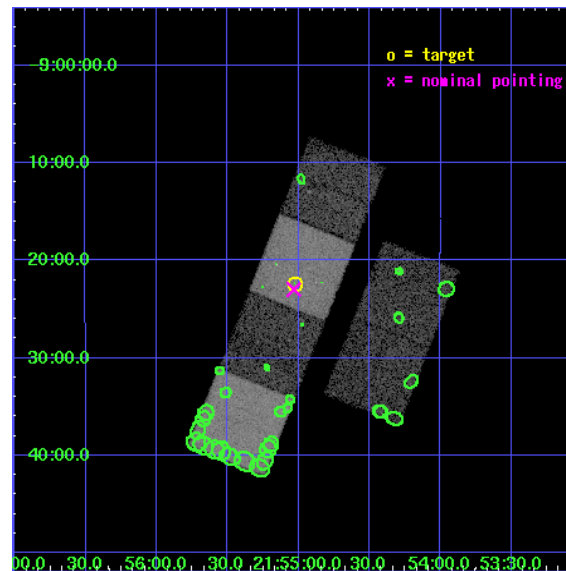
L2 Processing Date : Jan 18 2007

## Contents

<b>1</b>	<b>Front</b>	<b>2</b>
<b>2</b>	<b>OBI</b>	<b>3</b>
2.1	OBI . . . . .	3
2.1.1	Images . . . . .	3
2.1.2	Bias . . . . .	3
2.1.3	Parameters . . . . .	4
2.1.4	Events . . . . .	4
2.2	Compared Parameters . . . . .	5
2.3	Aspect . . . . .	6
2.4	Star Slots . . . . .	9
2.4.1	Slot 3 . . . . .	9
2.4.2	Slot 4 . . . . .	10
2.4.3	Slot 5 . . . . .	11
2.4.4	Slot 6 . . . . .	12
2.4.5	Slot 7 . . . . .	13
2.5	FID Slots . . . . .	14
2.5.1	Slot 0 . . . . .	14
2.5.2	Slot 1 . . . . .	15
2.5.3	Slot 2 . . . . .	16
<b>3</b>	<b>Point Sources</b>	<b>17</b>
<b>A</b>	<b>Summary</b>	<b>18</b>
A.1	Status . . . . .	18
A.2	Comments . . . . .	18

# 1 Front

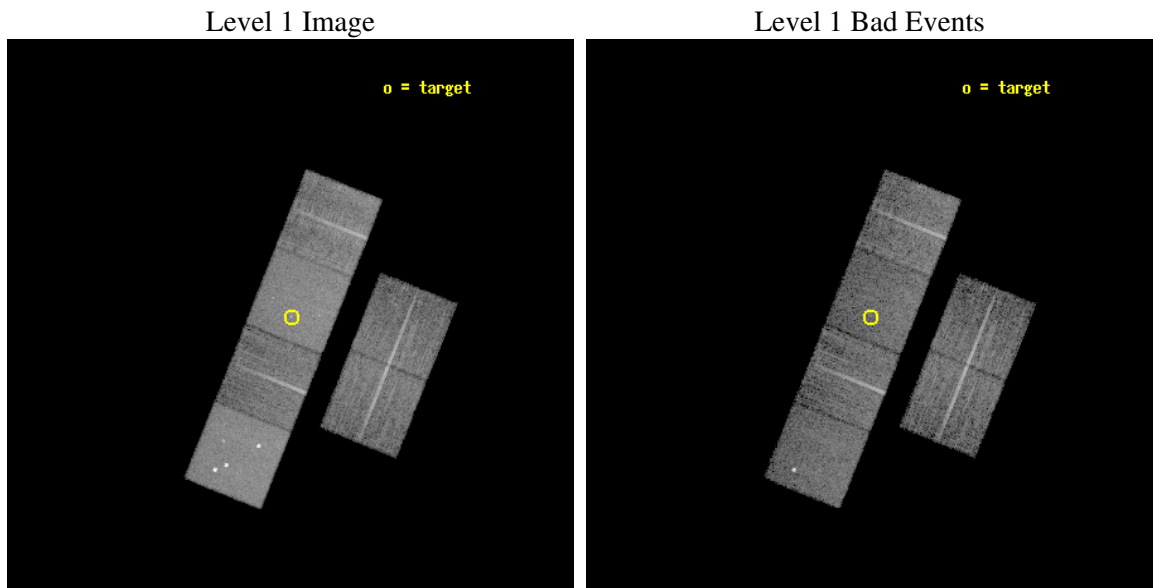
seq_num	700397
obs_id	2958
title	EXPLORATORY OBSERVATIONS OF A NEW BRIGHT QUASAR
observer	PROF. KAREN LEIGHLY
object	PHL 1811
dtcycle	0
cycle	P
ra_targ	328.75625
dec_targ	-9.373528
ra_nom	328.75826032544
dec_nom	-9.3830723592066
roll_nom	291.77875792213
revision	2
ontime	9961.6000092775
livetime	9835.4602318046
ontime2	9961.6000092775
ontime3	9961.6000092775
ontime5	9961.6000092775
ontime6	9961.6000092775
ontime7	9961.6000092775
ontime8	9961.6000092775
l2events	131751



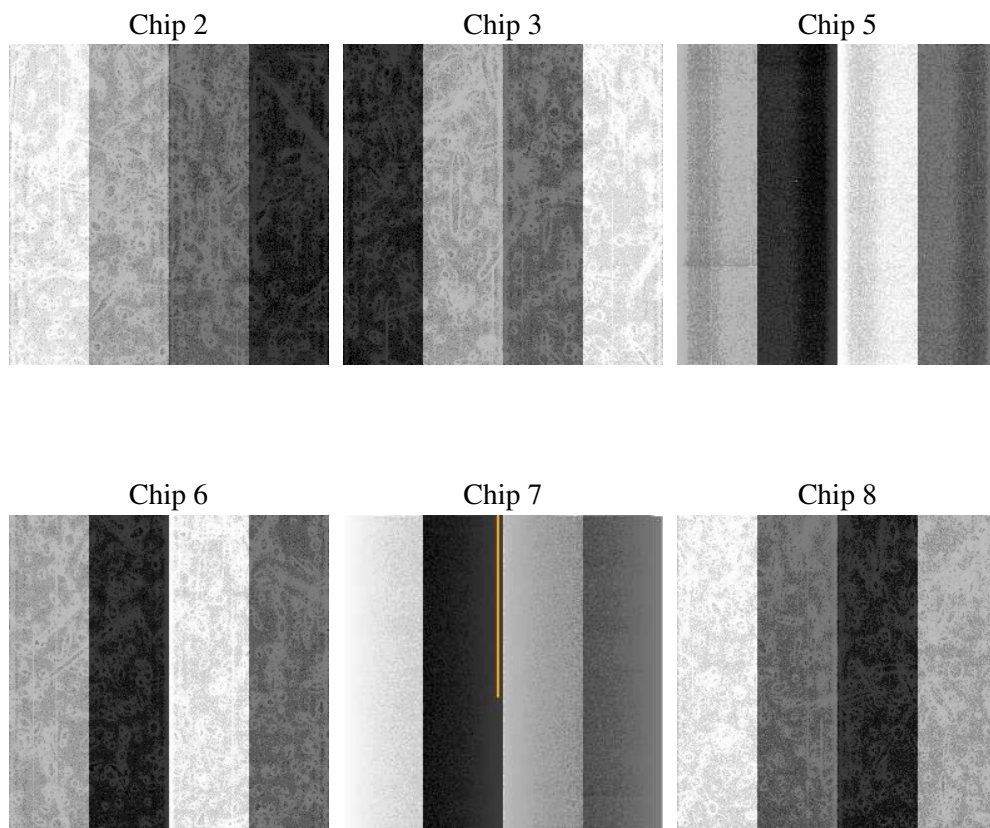
## 2 OBI

### 2.1 OBI

#### 2.1.1 Images



#### 2.1.2 Bias



### 2.1.3 Parameters

obi_num	0
ascdsver	7.6.10
caldbver	3.3.0
date	2007-01-18T05:13:51
revision	2

sched_exp_time	10000.000000
ontime	9961.6000092775
ontime2	9961.6000092775
ontime3	9961.6000092775
ontime5	9961.6000092775
ontime6	9961.6000092775
ontime7	9961.6000092775
ontime8	9961.6000092775
l1events	486540

### 2.1.4 Events

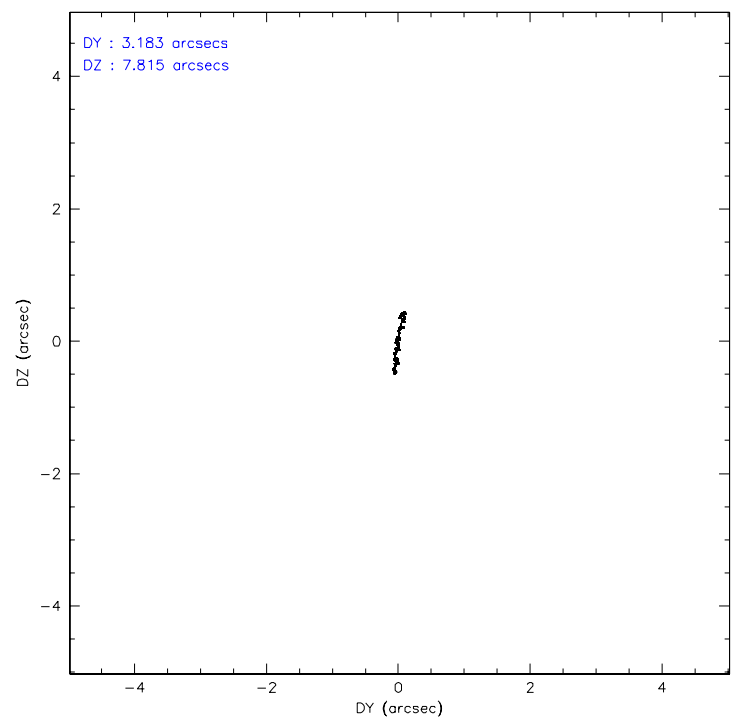
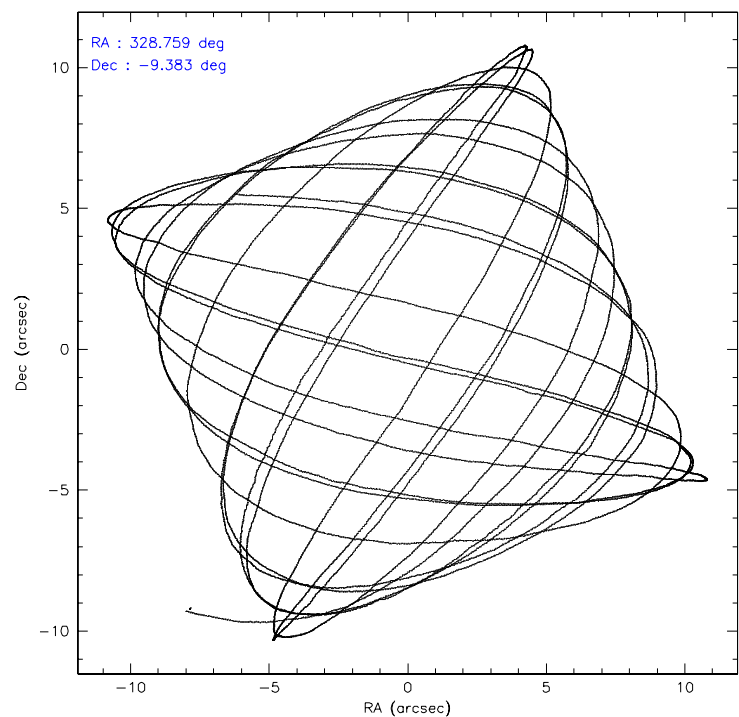
	ccd 2	ccd 3	ccd 5	ccd 6	ccd 7	ccd 8
level 1 events	66543	62434	110446	66241	96170	84706
rejected events	57310	53474	51709	56308	49223	63812
rejected %	86%	85%	46%	85%	51%	75%

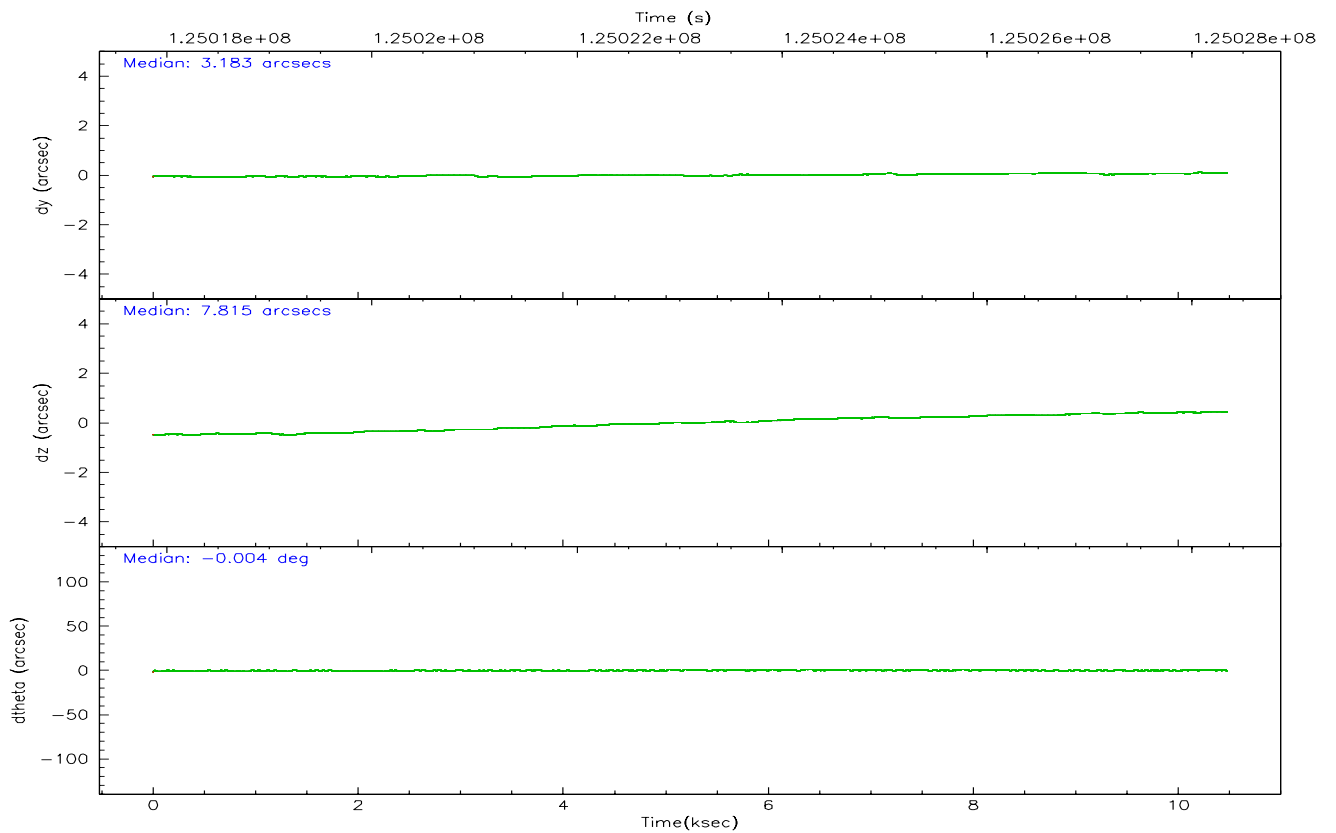
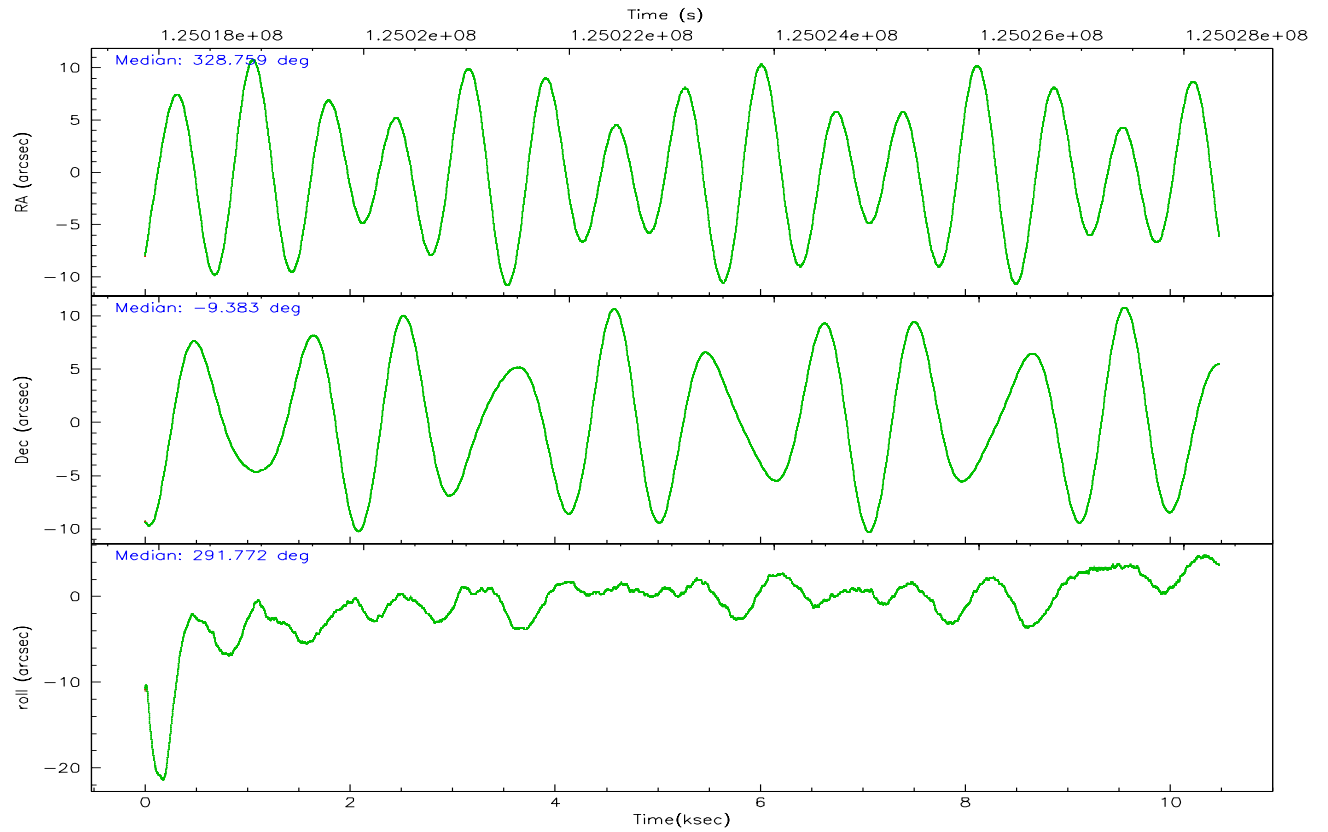
	ccd 2	ccd 3	ccd 5	ccd 6	ccd 7	ccd 8
grade 0 events	4230	4293	11149	4746	5054	7702
	6%	6%	10%	7%	5%	9%
grade 1 events	44	40	1431	51	69	56
	0%	0%	1%	0%	0%	0%
grade 2 events	1922	1706	16232	1862	9027	4095
	2%	2%	14%	2%	9%	4%
grade 3 events	759	762	2665	843	4103	2321
	1%	1%	2%	1%	4%	2%
grade 4 events	772	702	2612	841	4033	2078
	1%	1%	2%	1%	4%	2%
grade 5 events	2185	2536	6936	2792	7822	3495
	3%	4%	6%	4%	8%	4%
grade 6 events	1555	1505	26128	1644	24760	4700
	2%	2%	23%	2%	25%	5%
grade 7 events	55076	50890	43293	53462	41302	60259
	82%	81%	39%	80%	42%	71%

## 2.2 Compared Parameters

Parameter	Planned	Actual	Parameter	Planned	Actual
Instrument	ACIS	ACIS	Obspar format version number	6	6
Detector	ACIS-235678	ACIS-235678	Obspar file type	PREDICTED	ACTUAL
Grating	NONE	NONE	Obspar update status	NONE	UPDATED
Data mode	FAINT	FAINT	Number of optional ACIS chips dropped	0	0
Observation mode	POINTING	POINTING	On-chip summing requested	N	N
Pointing RA	328.736322	328.7582603254431	Subarray requested	NONE	NONE
Pointing Dec	-9.366444	-9.383072359206604	Alternating exposures requested	N	N
Pointing Roll	291.618553	291.7787579221326	Primary exposure time	0.000000	3.2
SIM focus pos (mm)	-0.684267	-0.6828225247311905			
SIM defocus (mm)	0	0.001444936568705701			
SIM translation stage pos (mm)	-190.132523	-190.1400660498719			
SIM translation stage offset (mm)	0	0.00754346686406393			
Observation start time	125018341.184000	125017242.38819			
Observation start date	2001-12-17T23:17:57	2001-12-17T23:00:42			
Observation end time	125028341.184000	125028845.90115			
Observation end date	2001-12-18T02:04:37	2001-12-18T02:14:05			
Read mode	TIMED	TIMED			

2.3 Aspect





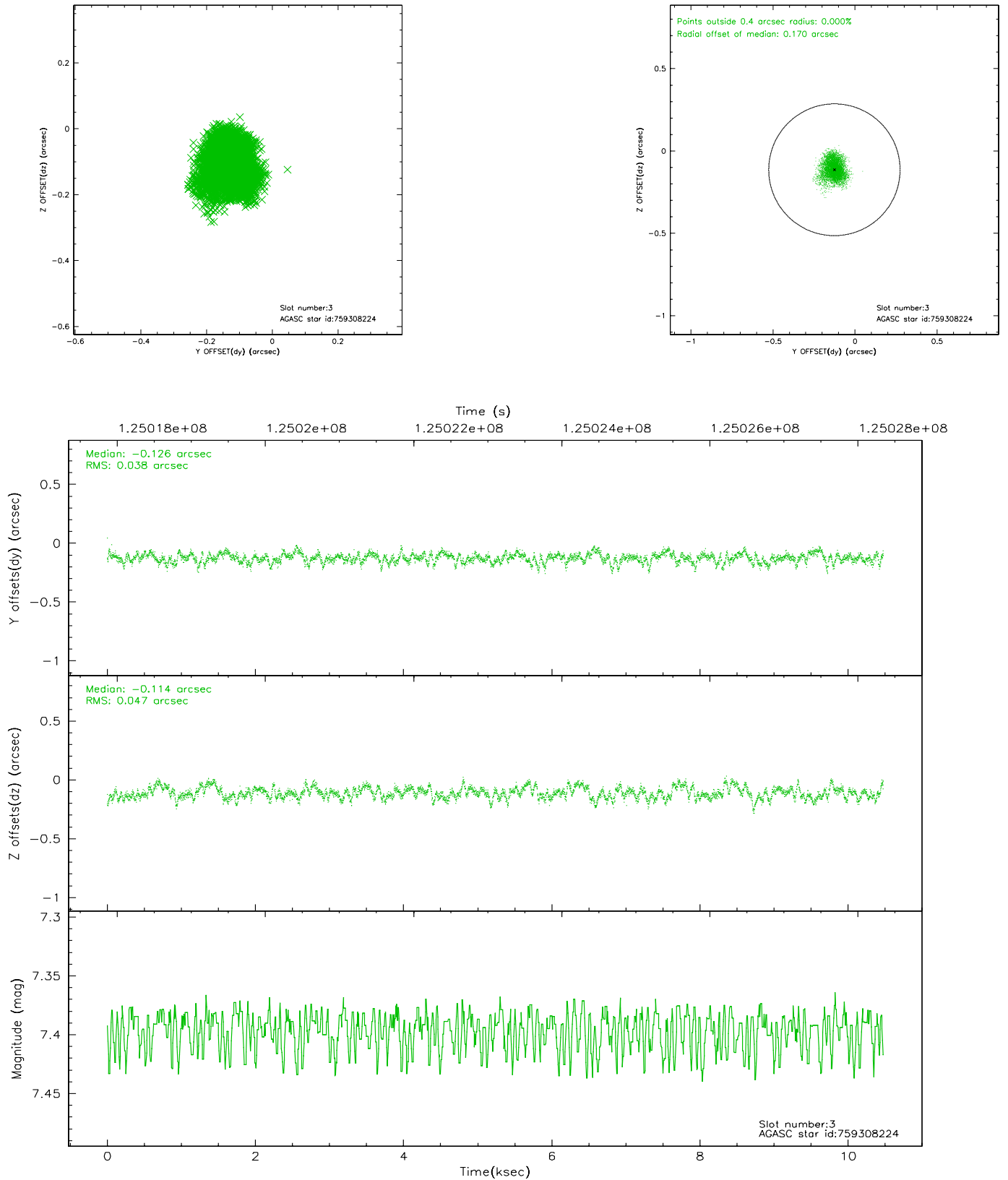
### Slot Statistics

slot	status	id	mag	n_pts	med_dy	med_dz	dr1	dr2	ra	dec	mean_y	mean_z
0	FID	ACIS-S-2	7.11	2557	0.006	0.022	0.008	0.013	0.000000	0.000000	-755.83	-1728.96
1	FID	ACIS-S-4	7.20	2557	-0.071	-0.009	0.005	0.010	0.000000	0.000000	2157.15	178.97
2	FID	ACIS-S-5	7.24	2557	0.034	-0.005	0.008	0.013	0.000000	0.000000	-1808.00	173.23
3	GUIDE	759308224	7.39	5110	-0.126	-0.114	0.065	0.105	328.123687	-9.417926	-628.37	-2092.68
4	GUIDE	759307952	6.36	5112	-0.090	-0.053	0.045	0.071	329.103732	-9.585858	1214.19	920.11
5	GUIDE	759308864	9.11	5112	0.118	0.150	0.089	0.143	329.073084	-9.505733	906.51	926.29
6	GUIDE	759305424	9.73	5113	-0.000	-0.082	0.118	0.195	328.253023	-9.924329	1236.34	-2334.24
7	GUIDE	759305384	8.85	5111	0.096	0.094	0.070	0.114	328.426697	-9.776111	966.37	-1565.78

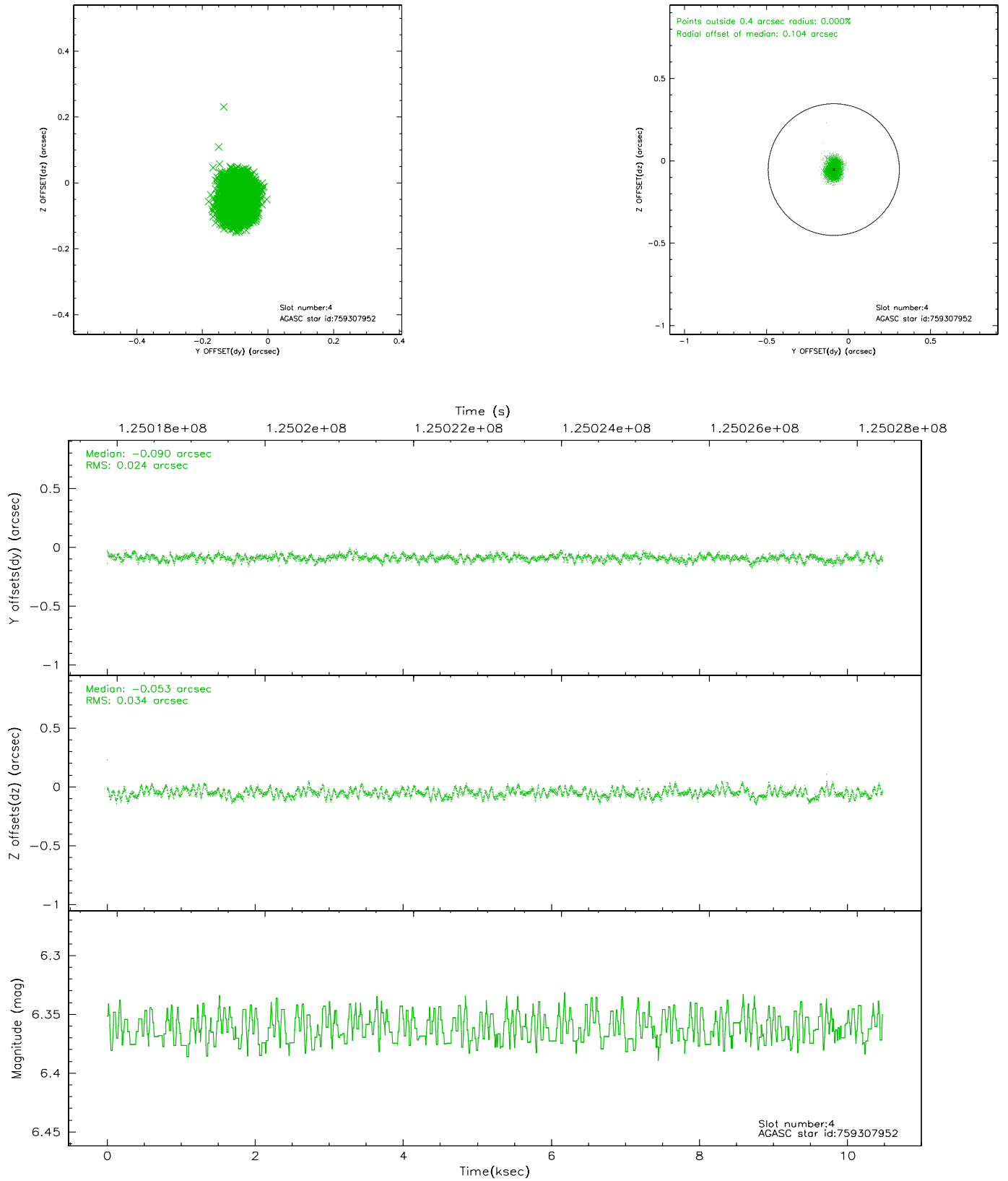


## 2.4 Star Slots

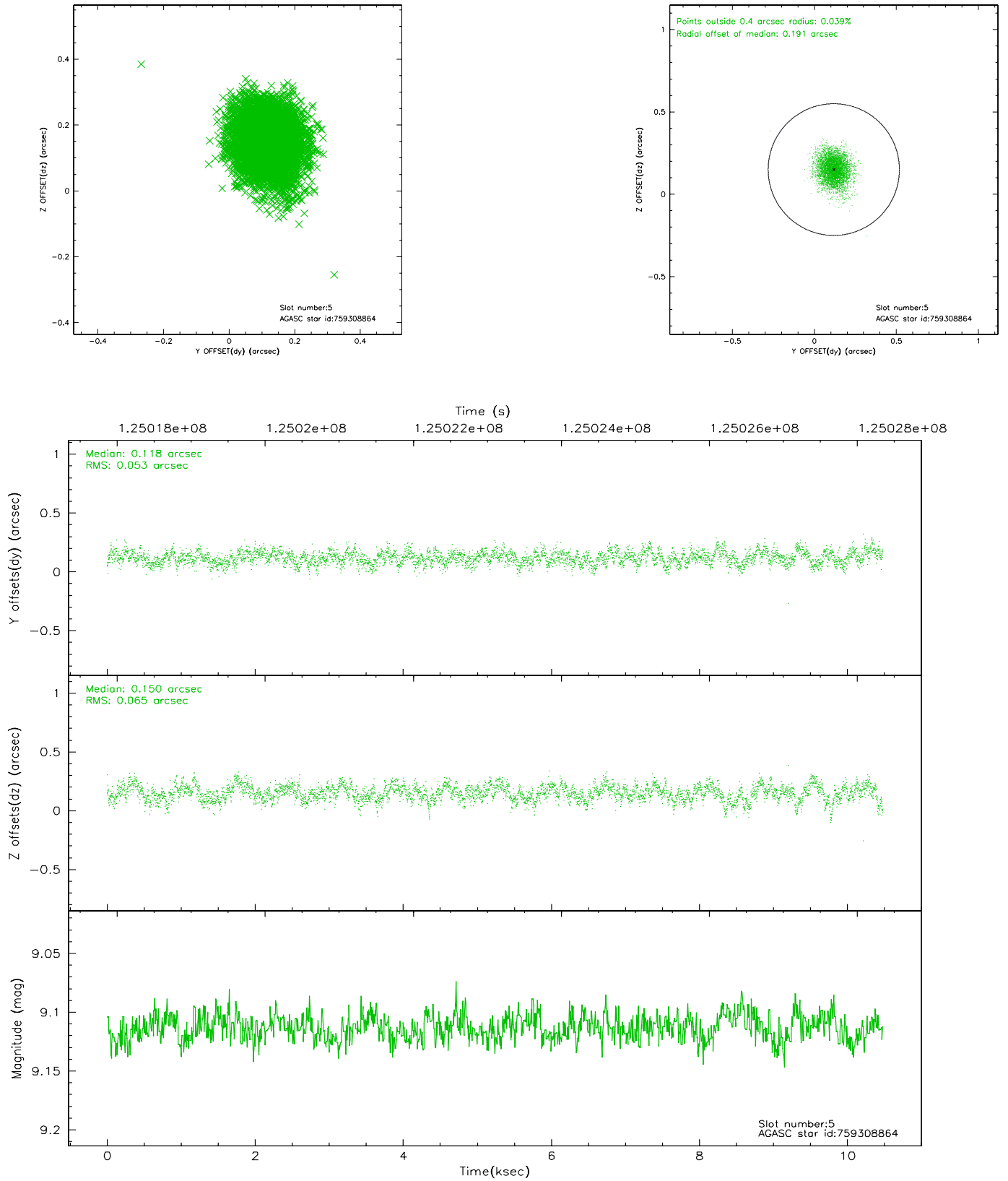
### 2.4.1 Slot 3



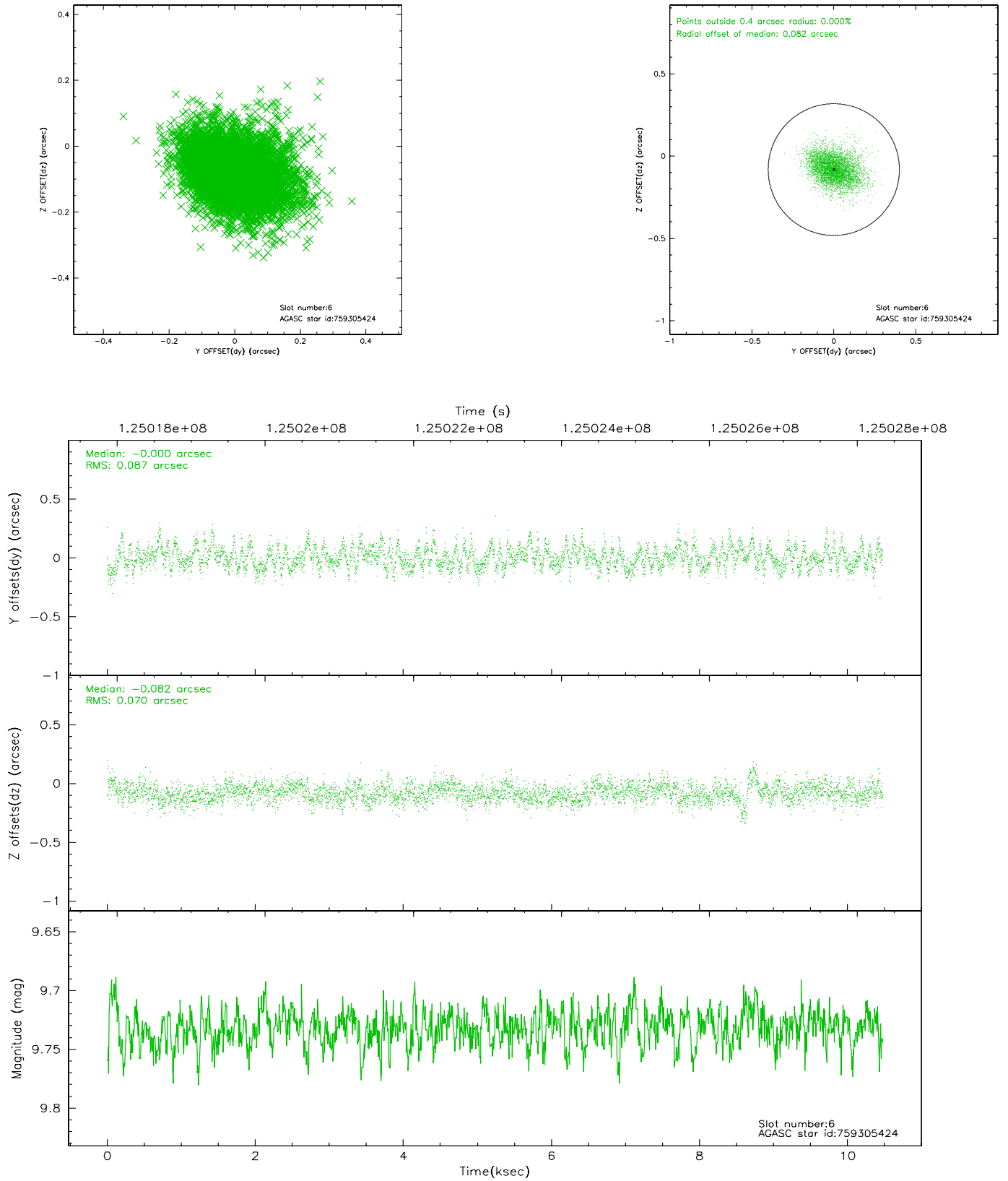
## 2.4.2 Slot 4



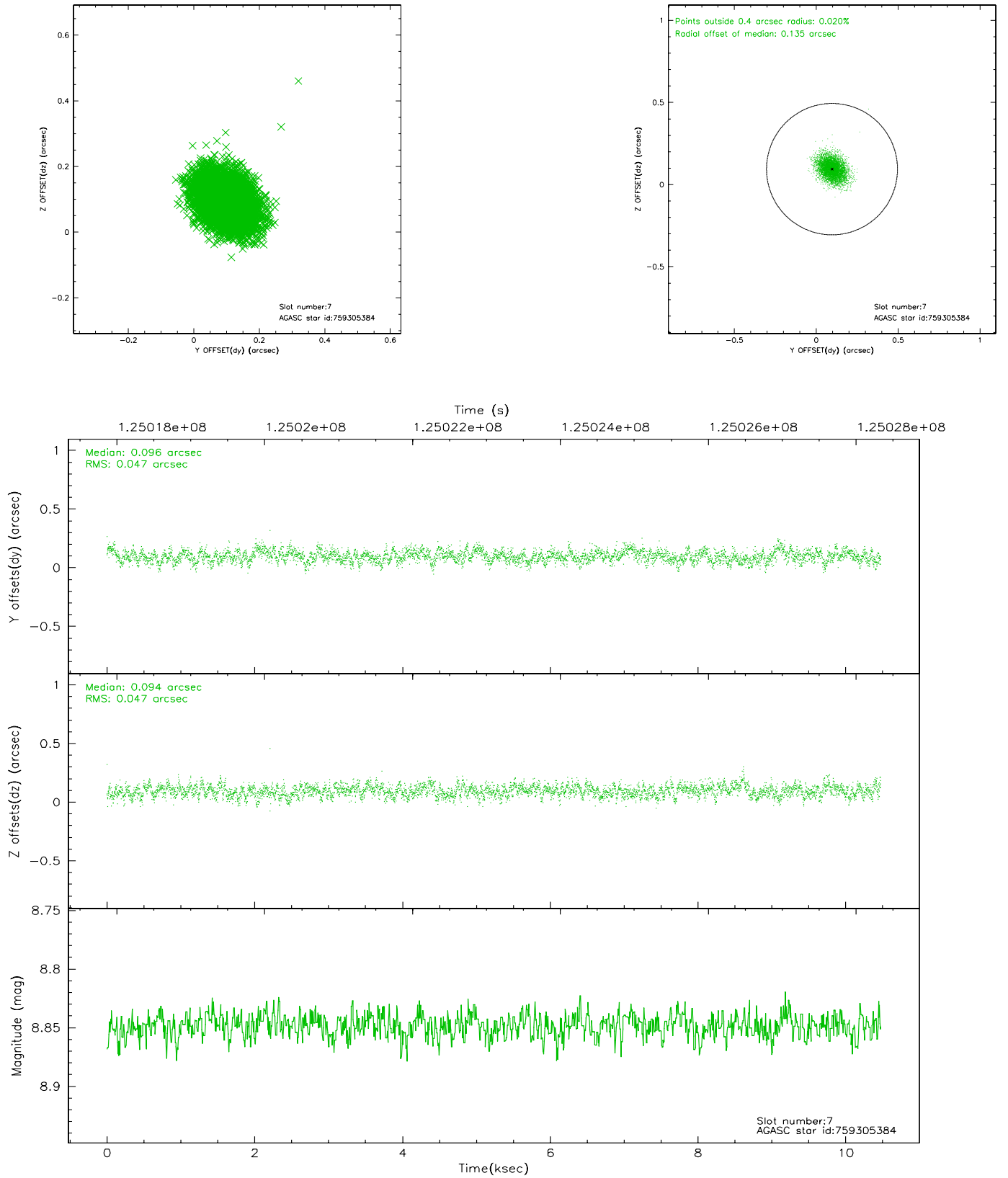
### 2.4.3 Slot 5



## 2.4.4 Slot 6

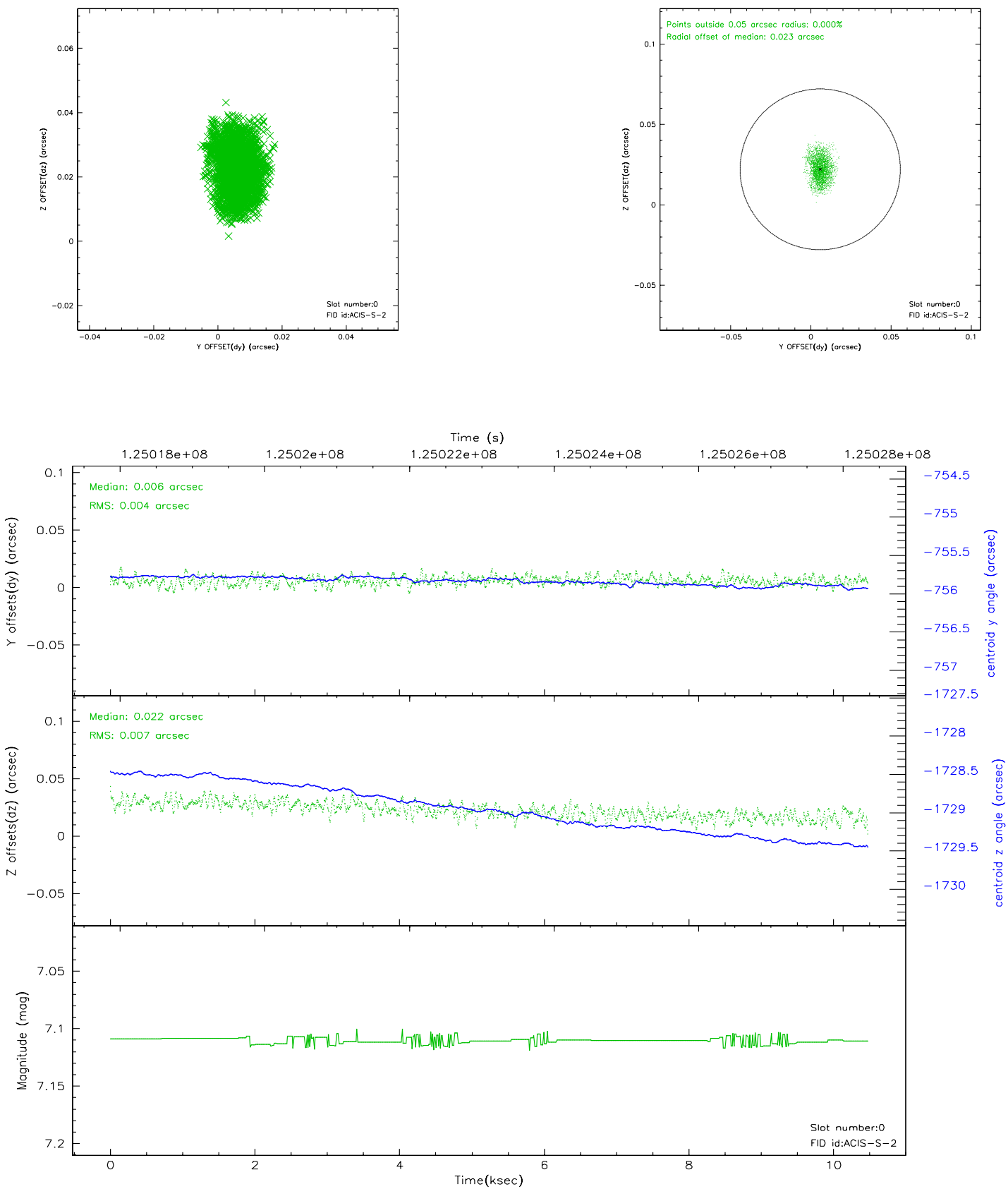


## 2.4.5 Slot 7

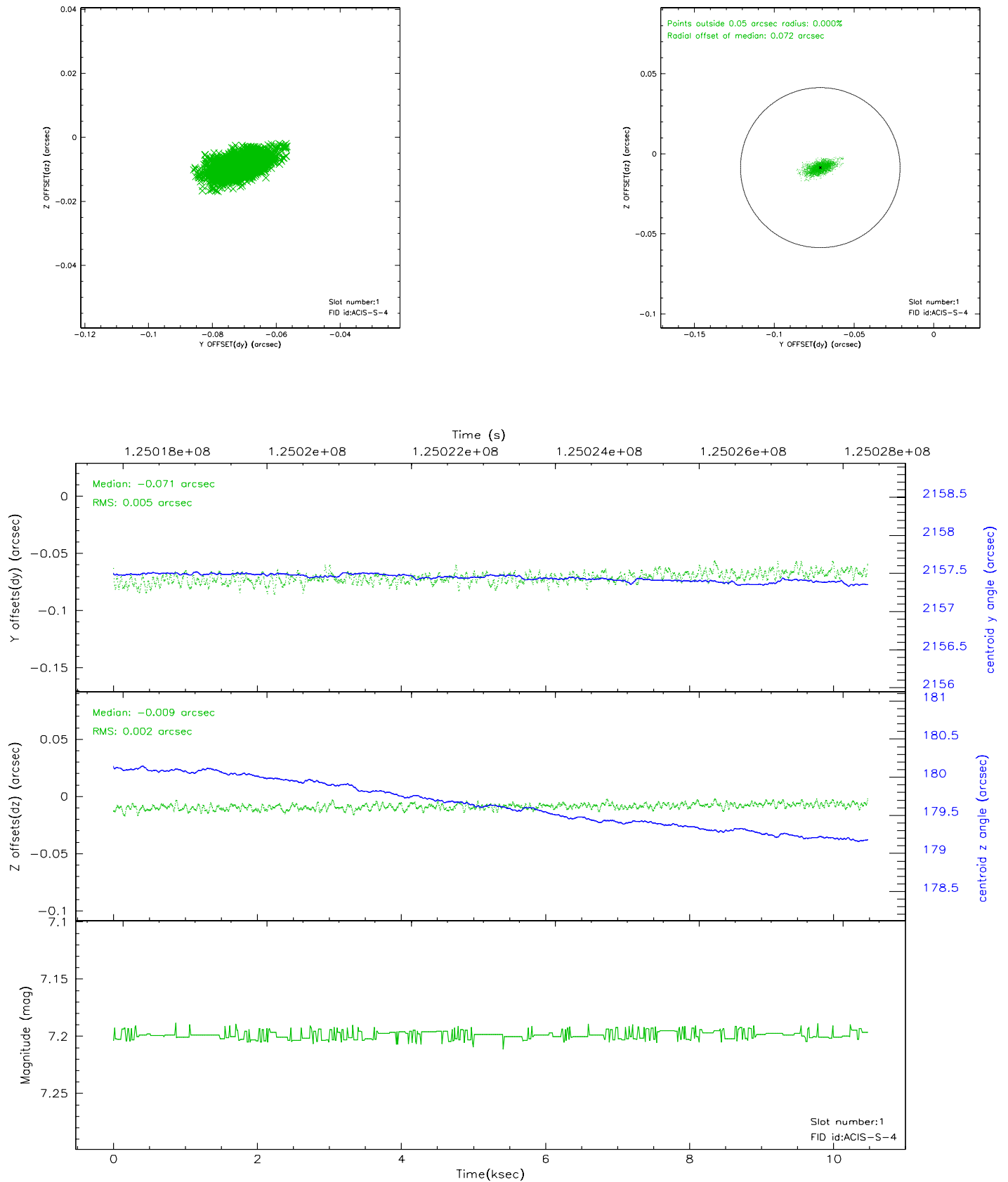


## 2.5 FID Slots

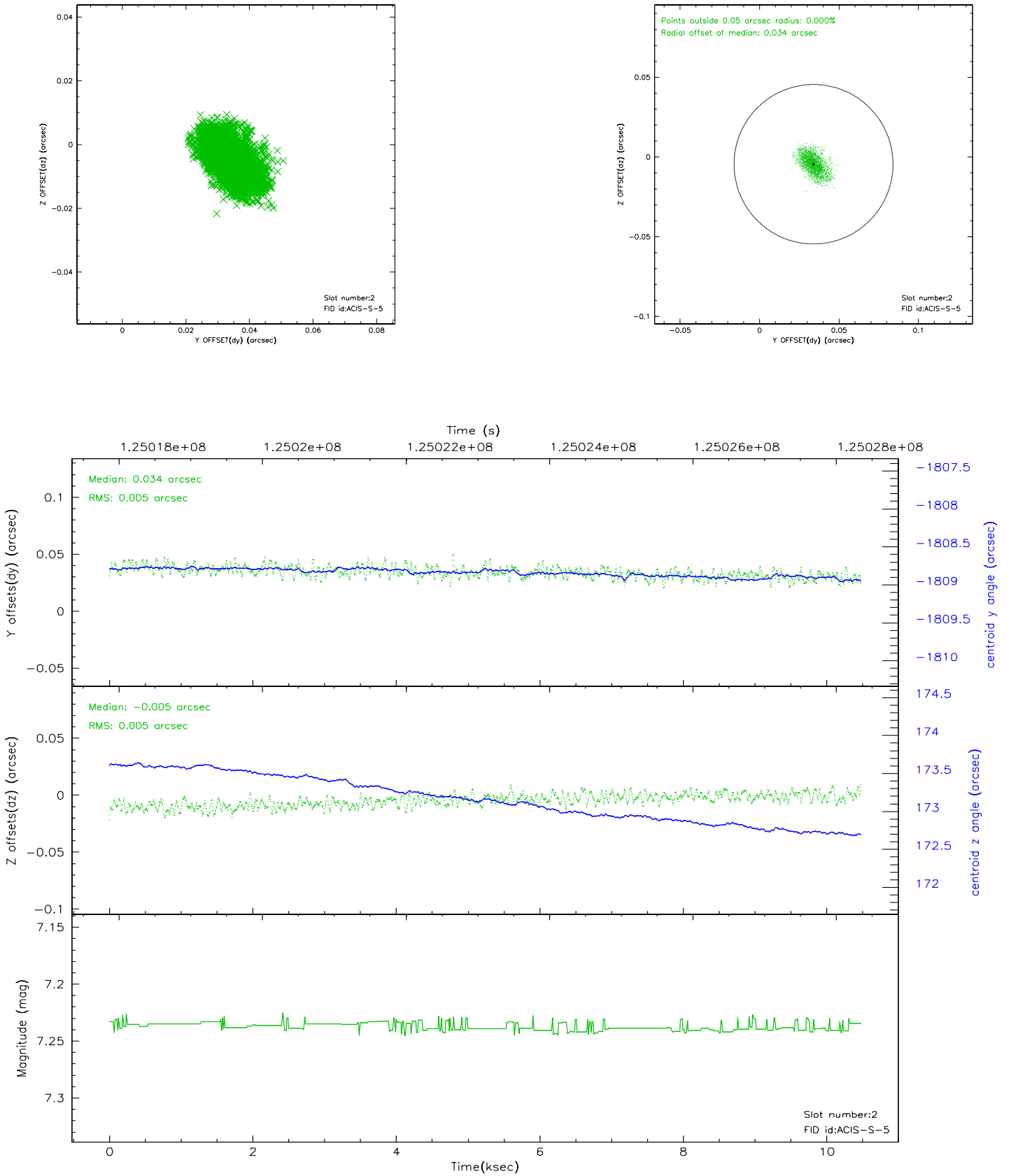
### 2.5.1 Slot 0



## 2.5.2 Slot 1

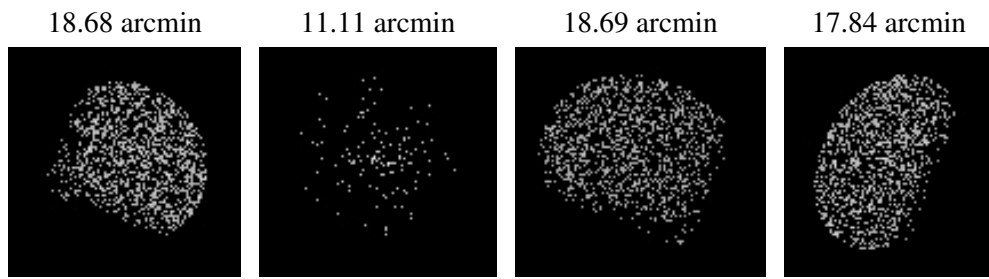


### 2.5.3 Slot 2





### 3 Point Sources



## A Summary

### A.1 Status

V&V Scientist	Beth Sundheim
V&V Date (YYYY-MM-DD)	2007.01.18
V&V Edition	1
V&V Disposition and Status	OK
V&V Charge Time	9.964

### A.2 Comments