

# V&V Reference Report

## L2 ASCDS Version : 8.4.5

Observation 2948 - L2 Version 3  
Chandra X-Ray Center

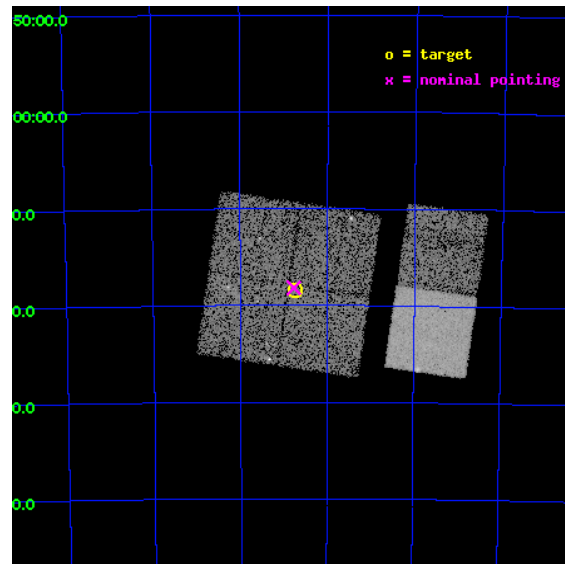
L2 Processing Date : Oct 10 2012

## Contents

<b>1</b>	<b>Front</b>	<b>2</b>
<b>2</b>	<b>OBI</b>	<b>3</b>
2.1	OBI . . . . .	3
2.1.1	Images . . . . .	3
2.1.2	Bias . . . . .	3
2.1.3	Parameters . . . . .	4
2.1.4	Events . . . . .	4
2.2	Compared Parameters . . . . .	5
2.3	Aspect . . . . .	6
2.4	Star Slots . . . . .	9
2.4.1	Slot 3 . . . . .	9
2.4.2	Slot 4 . . . . .	10
2.4.3	Slot 5 . . . . .	11
2.4.4	Slot 6 . . . . .	12
2.4.5	Slot 7 . . . . .	13
2.5	FID Slots . . . . .	14
2.5.1	Slot 0 . . . . .	14
2.5.2	Slot 1 . . . . .	15
2.5.3	Slot 2 . . . . .	16
<b>A</b>	<b>Summary</b>	<b>17</b>
A.1	Status . . . . .	17
A.2	Comments . . . . .	17

# 1 Front

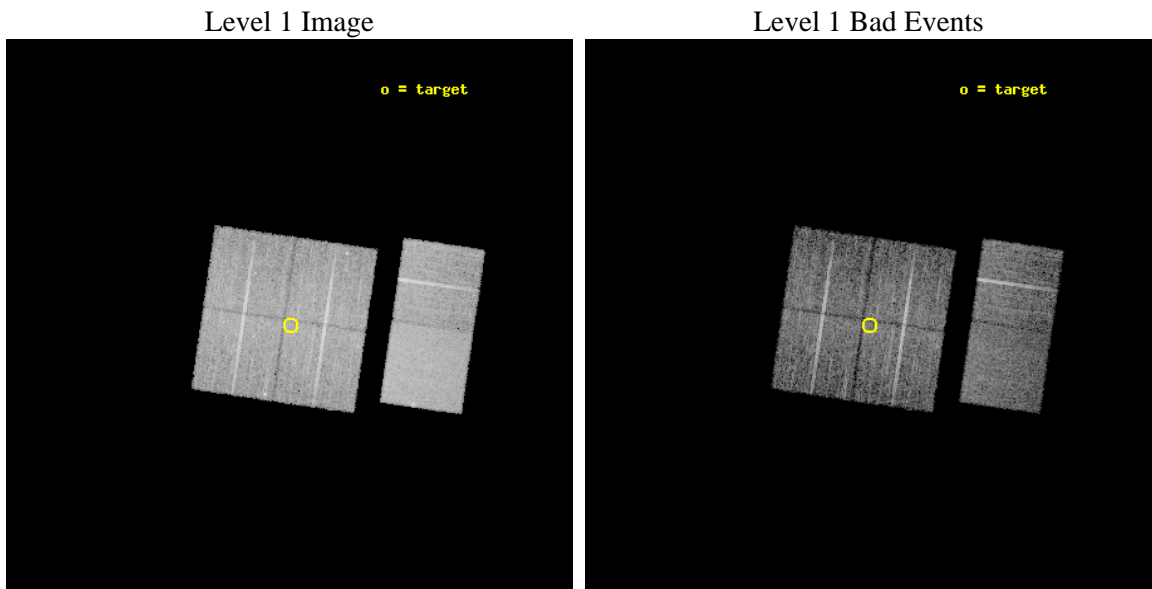
seq_num	600285	Sequence number
obs_id	2948	Observation id
title	A CHANDRA SURVEY OF THE SMC	Proposal title
observer	Dr Andreas Zezas	Principal investigator
object	SMC FIELD 3	Source name
dtcycle	0	&#160
cycle	P	events from which exps? Prim/Second/Both
ra_targ	14.188333	Observer's specified target RA [deg]
dec_targ	-72.3075	Observer's specified target Dec [deg]
ra_nom	14.192230250749	Nominal RA [deg]
dec_nom	-72.302993009685	Nominal Dec [deg]
roll_nom	98.368241963811	Nominal Roll [deg]
revision	3	Processing version of data
ontime	9404.7999649644	Sum of GTIs [s]
livetime	9285.7107249173	Livetime [s]
ontime0	9404.7053733766	Sum of GTIs [s]
ontime1	9404.7464133501	Sum of GTIs [s]
ontime2	9404.7874533534	Sum of GTIs [s]
ontime3	9404.7999649644	Sum of GTIs [s]
ontime6	9404.7999649644	Sum of GTIs [s]
ontime7	9404.7999649644	Sum of GTIs [s]
l2events	68393	Number of level 2 events



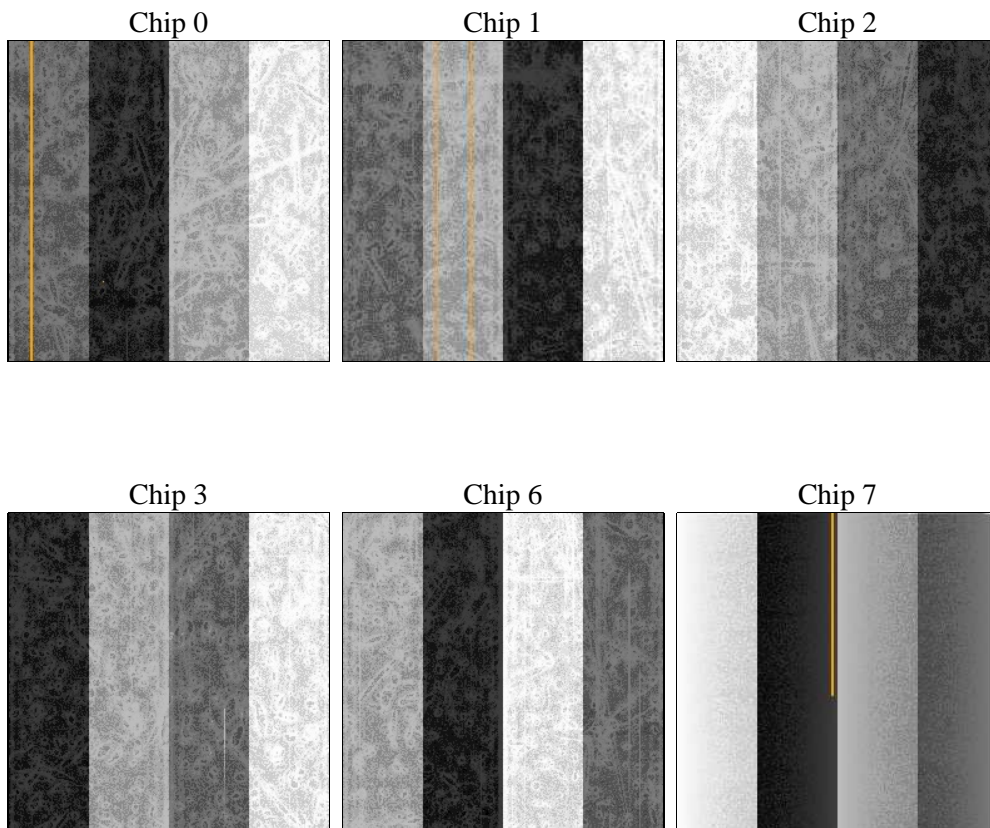
## 2 OBI

### 2.1 OBI

#### 2.1.1 Images



#### 2.1.2 Bias



### 2.1.3 Parameters

obi_num	0	Obi number	sched_exp_time	9650.000000	[s] Scheduled observation exposure time
ascdsver	8.4.5	Processing system revision	ontime	9404.7999649644	Sum of GTIs [s]
caldsver	4.5.2	&#160	ontime0	9404.7053733766	Sum of GTIs [s]
date	2012-10-10T04:21:32	Date and time of file creation	ontime1	9404.7464133501	Sum of GTIs [s]
revision	3	Processing version of data	ontime2	9404.7874533534	Sum of GTIs [s]
			ontime3	9404.7999649644	Sum of GTIs [s]
			ontime6	9404.7999649644	Sum of GTIs [s]
			ontime7	9404.7999649644	Sum of GTIs [s]
			l1events	392243	Number of level 1 events

### 2.1.4 Events

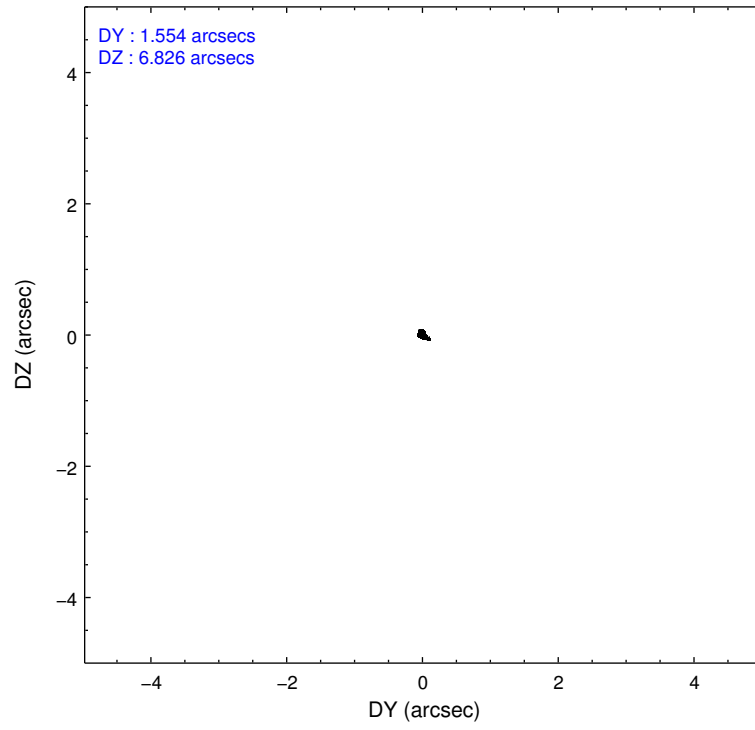
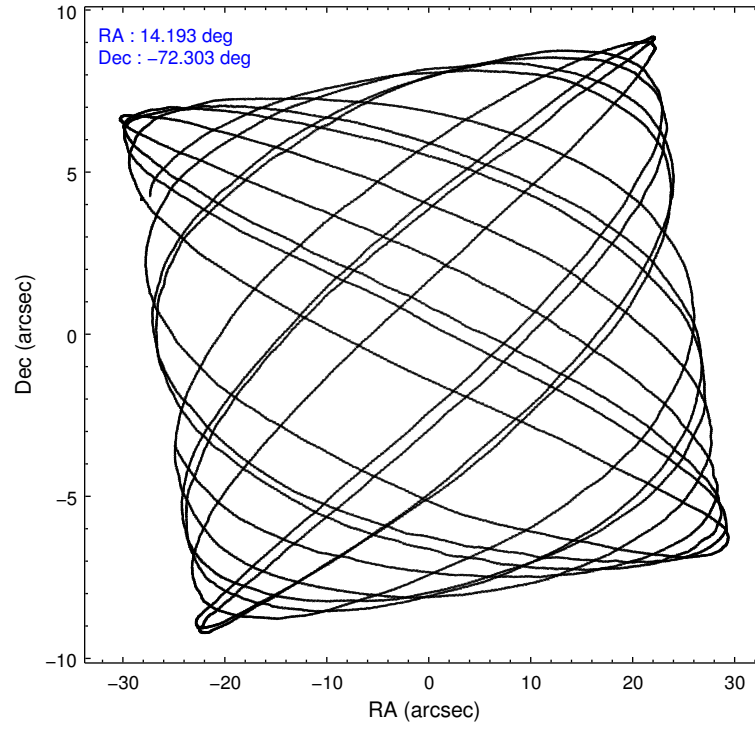
	ccd 0	ccd 1	ccd 2	ccd 3	ccd 6	ccd 7		ccd 0	ccd 1	ccd 2	ccd 3	ccd 6	ccd 7
level 1 events	58422	61774	62584	62346	63262	83855	grade 0 events	3420	3960	3537	3283	2904	3449
rejected events	50526	52944	54802	54857	55895	48607		5%	6%	5%	5%	4%	4%
rejected %	86%	85%	87%	87%	88%	57%	grade 1 events	30	33	26	26	31	65
								0%	0%	0%	0%	0%	0%
							grade 2 events	1665	1745	1643	1536	1564	6980
								2%	2%	2%	2%	2%	8%
							grade 3 events	731	837	643	667	741	3238
								1%	1%	1%	1%	1%	3%
							grade 4 events	713	797	655	659	732	3193
								1%	1%	1%	1%	1%	3%
							grade 5 events	2391	2649	2284	2547	2782	7951
								4%	4%	3%	4%	4%	9%
							grade 6 events	1368	1494	1308	1352	1428	18398
								2%	2%	2%	2%	2%	21%
							grade 7 events	48104	50259	52488	52276	53080	40581
								82%	81%	83%	83%	83%	48%

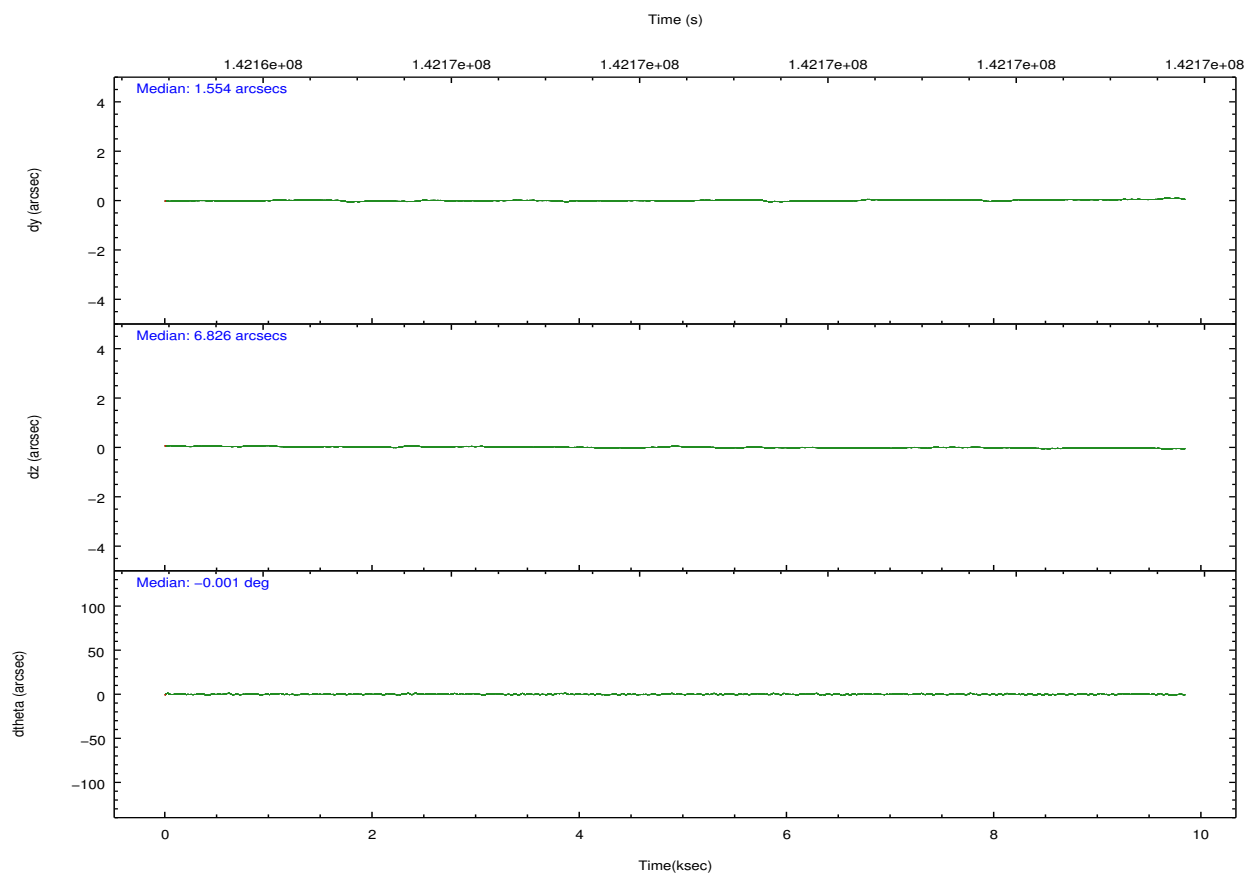
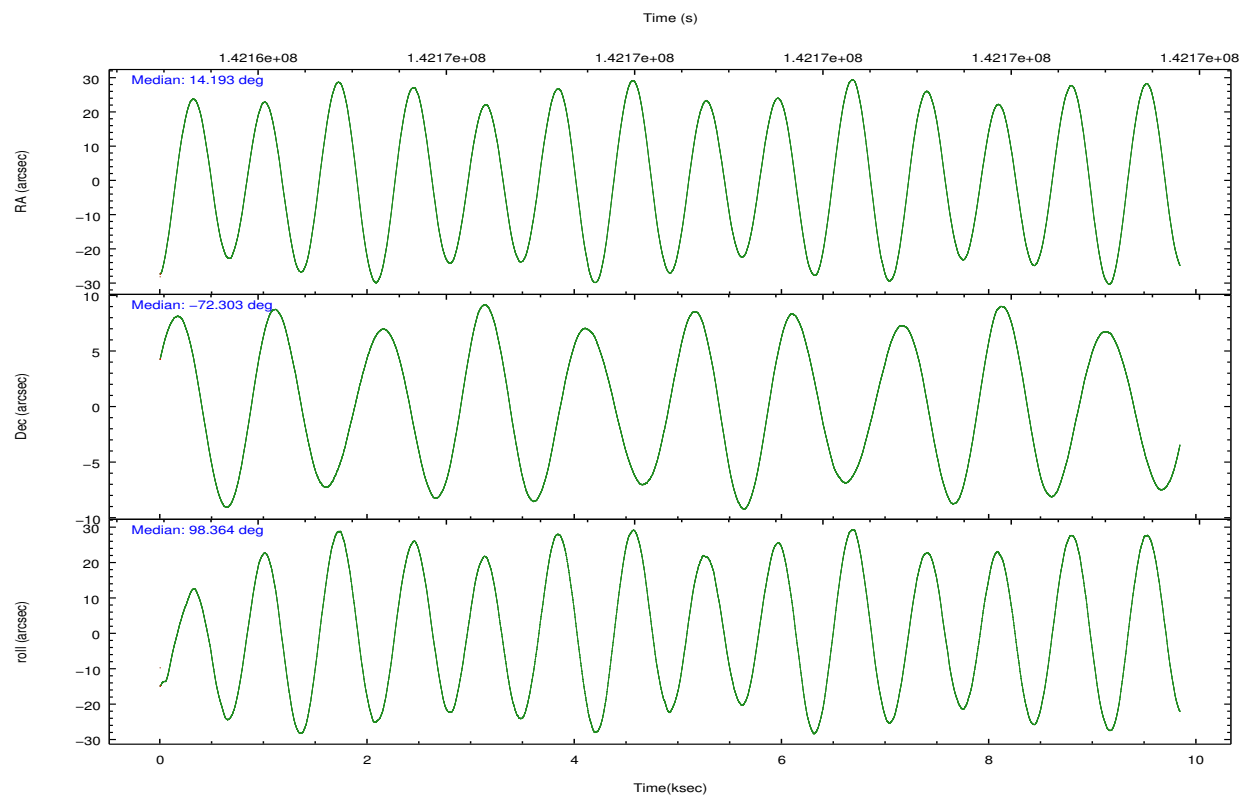


## 2.2 Compared Parameters

Parameter	Planned	Actual	Parameter	Planned	Actual
Instrument	ACIS	ACIS	Obspar format version number	7	7
Detector	ACIS-012367	ACIS-012367	Obspar file type	PREDICTED	ACTUAL
Grating	NONE	NONE	Obspar update status	NONE	UPDATED
Data mode	FAINT	FAINT	Number of optional ACIS chips dropped	0	0
Observation mode	POINTING	POINTING	On-chip summing requested	N	N
[deg] Pointing RA	14.248472	14.19223025074912	Subarray requested	NONE	NONE
[deg] Pointing Dec	-72.324403	-72.30299300968528	Alternating exposures requested	N	N
[deg] Pointing Roll	98.213138	98.36824196381082	[s] Primary exposure time	0.000000	3.2
[mm] SIM focus pos	-0.782348	-0.7809083437167272			
[mm] SIM defocus	0	0.001439871863259334			
[mm] SIM translation stage pos	-233.592463	-233.5874344608287			
[mm] SIM translation stage offset	0	-0.005018542100998502			
[s] Observation start time (MET)	142163653.184000	142163277.03354			
Observation start date	2002-07-04T09:53:09	2002-07-04T09:47:57			
[s] Observation end time (MET)	142173303.184000	142173944.20898			
Observation end date	2002-07-04T12:33:59	2002-07-04T12:45:44			
Read mode	TIMED	TIMED			

## 2.3 Aspect



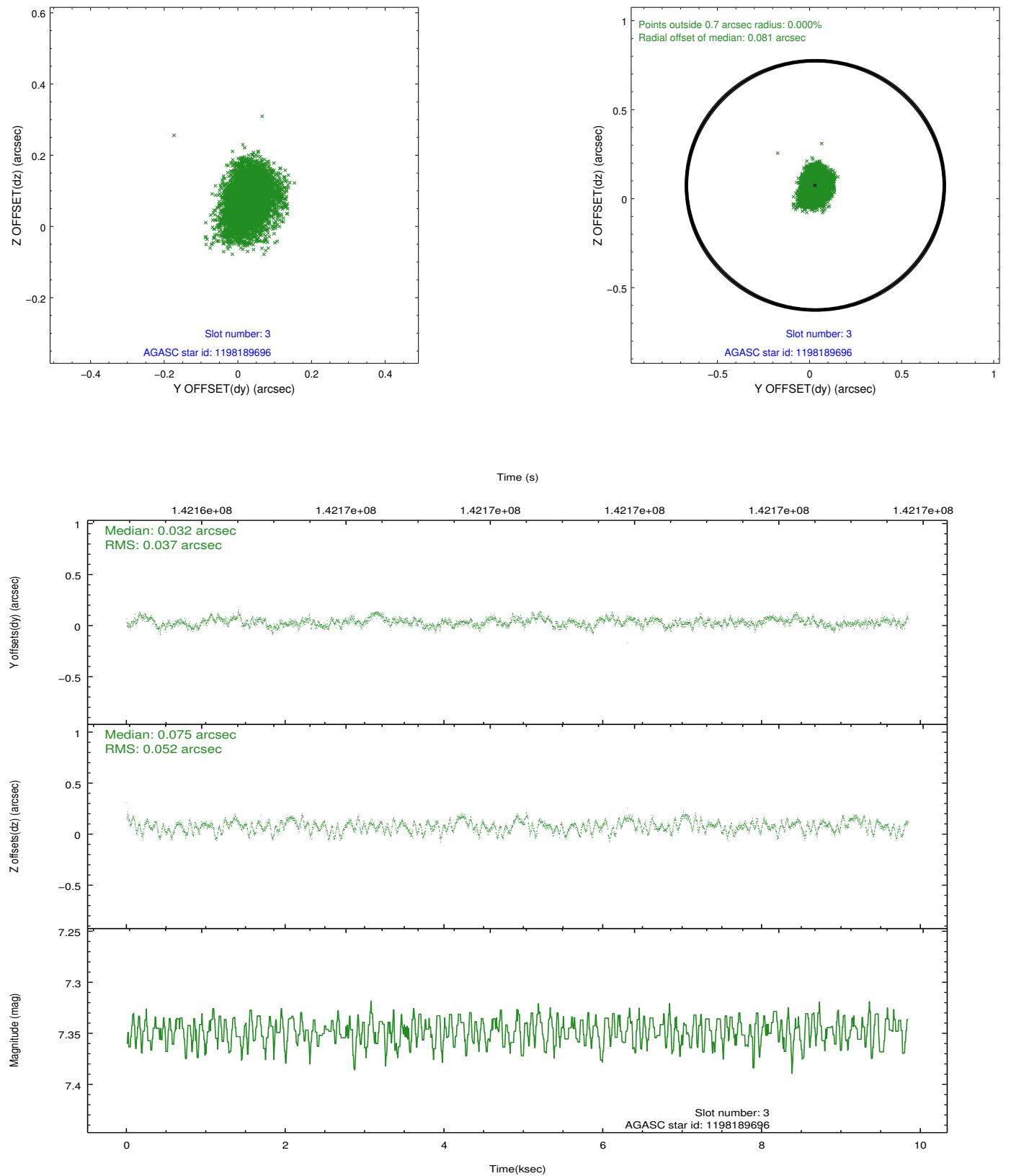


### Slot Statistics

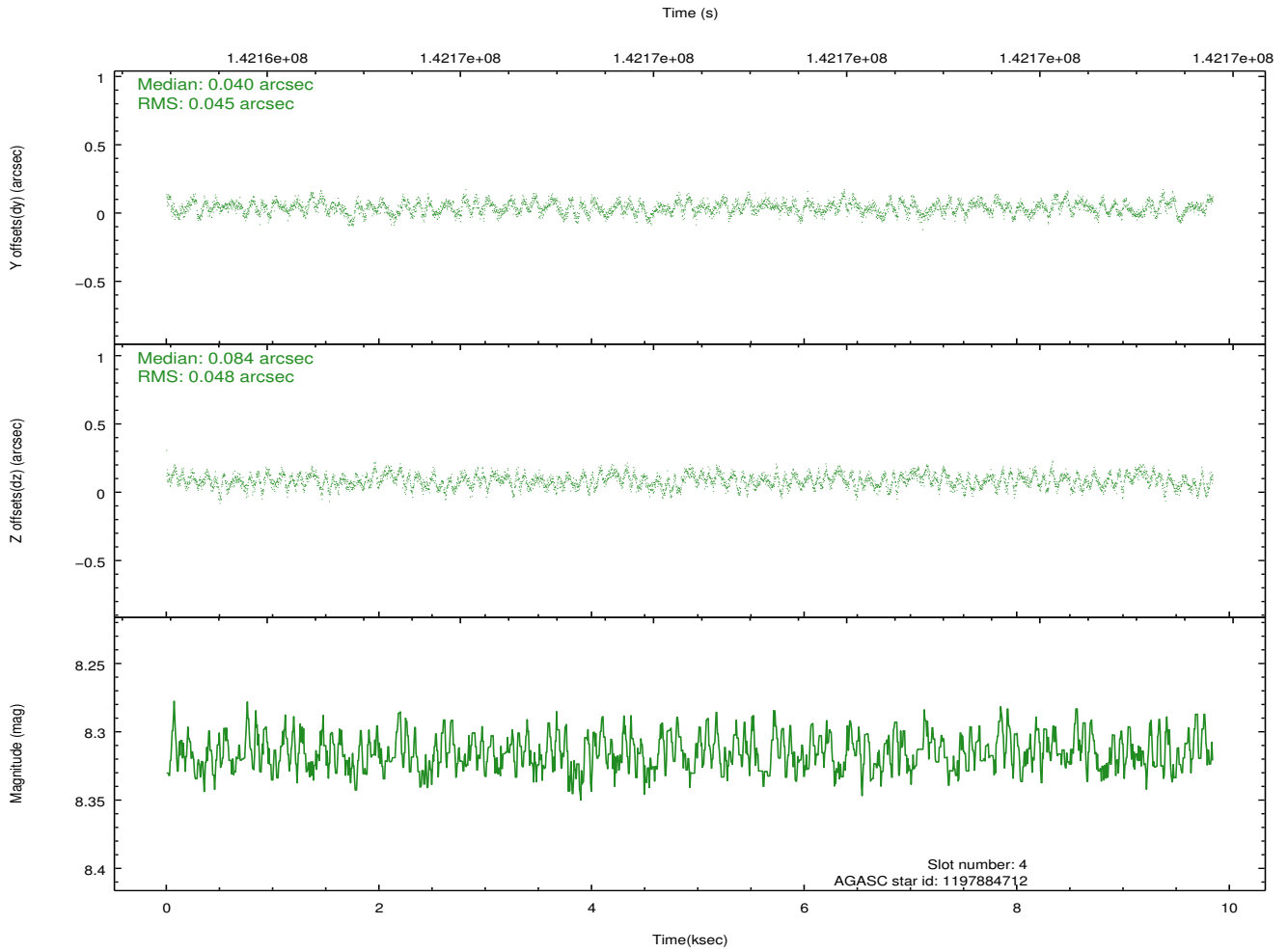
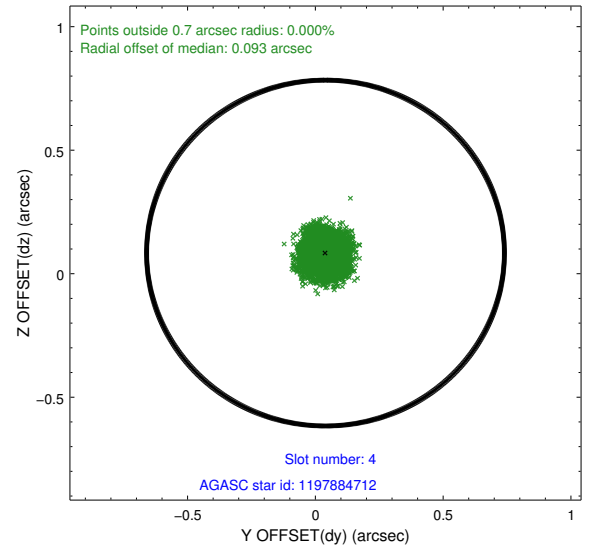
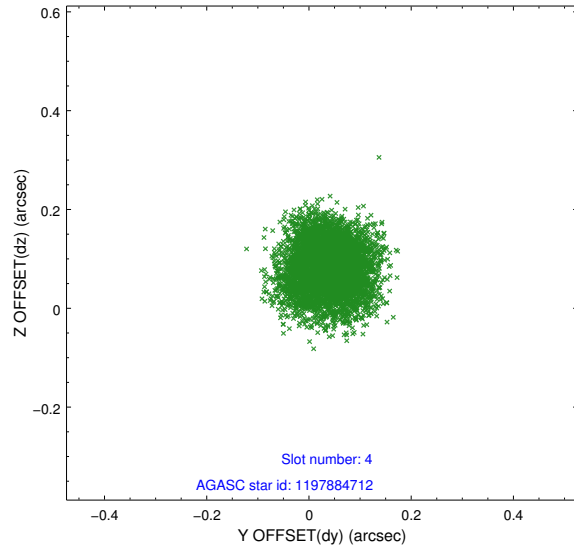
slot	status	id	mag	n_pts	med_dy	med_dz	dr1	dr2	ra	dec	mean_y	mean_z
0	FID	ACIS-I-1	7.25	2401	0.003	0.008	0.006	0.011	0.000000	0.000000	938.26	-830.23
1	FID	ACIS-I-5	7.23	2400	-0.068	0.048	0.006	0.011	0.000000	0.000000	-1809.58	1067.09
2	FID	ACIS-I-6	7.26	2400	-0.026	0.014	0.007	0.011	0.000000	0.000000	403.24	1712.13
3	GUIDE	1198189696	7.35	4800	0.032	0.075	0.069	0.110	15.223750	-72.697522	-1486.64	-839.29
4	GUIDE	1197884712	8.32	4801	0.040	0.084	0.071	0.112	16.087398	-72.252690	-63.05	-2028.32
5	GUIDE	1197751048	8.58	4799	-0.086	-0.063	0.087	0.137	12.451586	-72.130600	944.78	1869.67
6	GUIDE	1198192408	9.43	4740	0.069	-0.053	0.082	0.134	12.860639	-72.678863	-1067.11	1658.24
7	GUIDE	1197750160	10.26	4786	-0.046	-0.040	0.159	0.257	12.997994	-71.773722	2148.74	1114.11

## 2.4 Star Slots

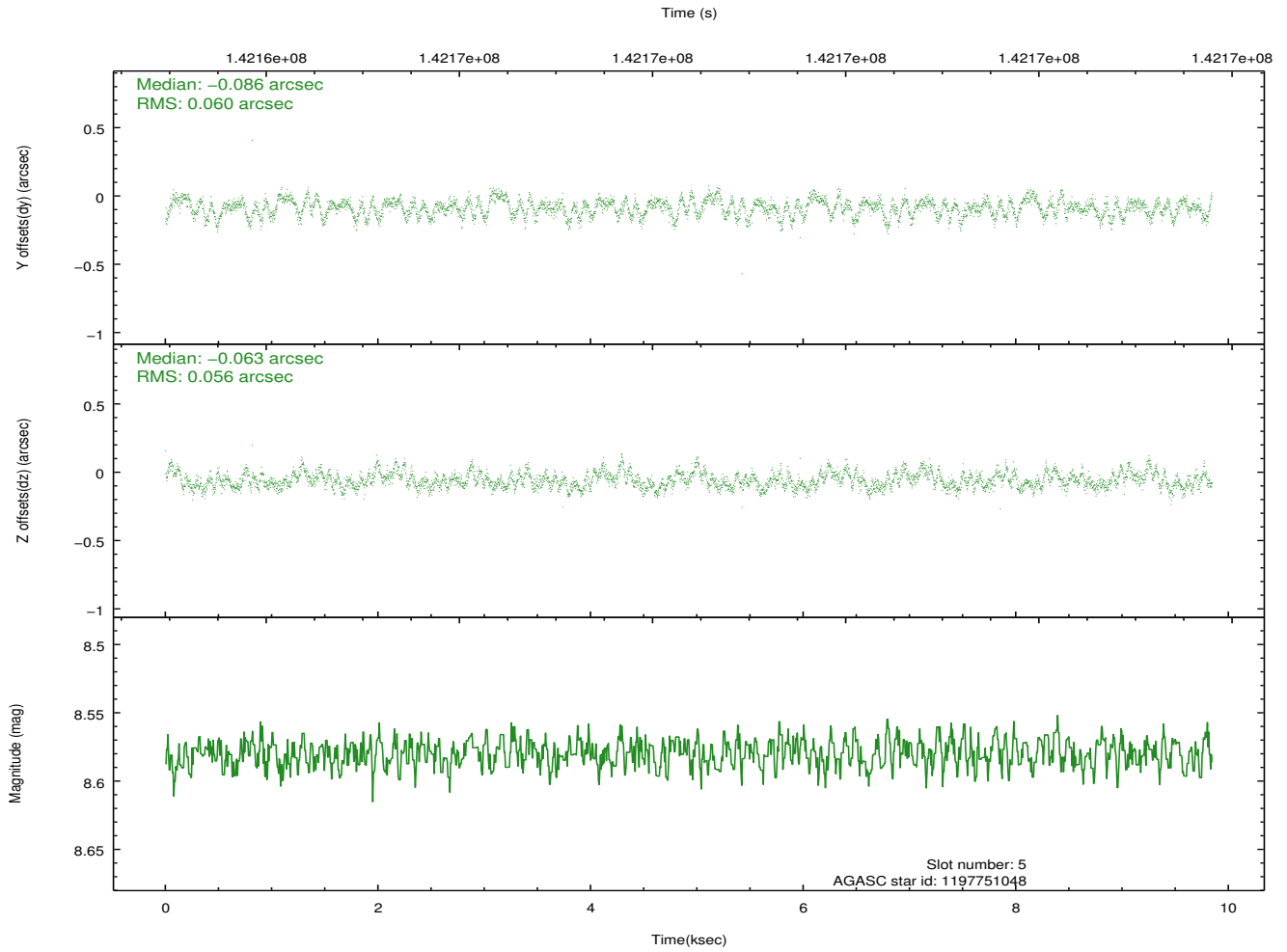
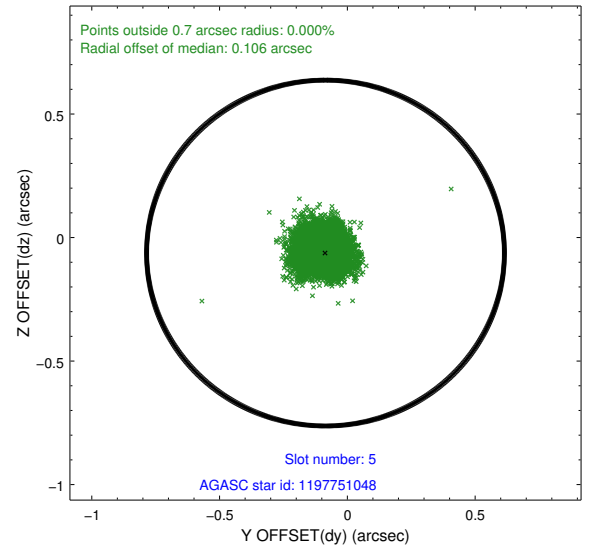
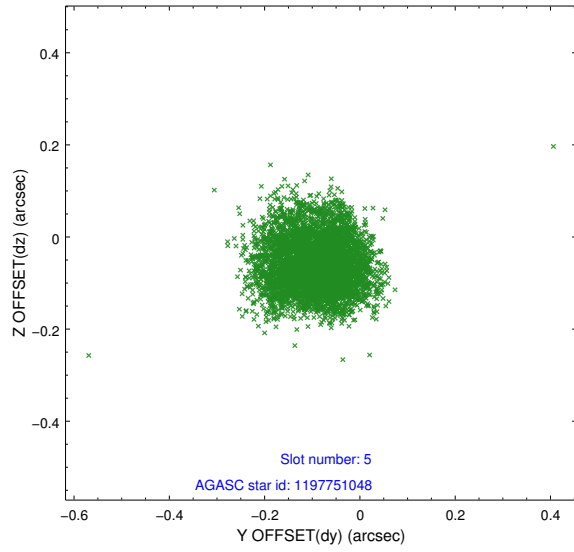
### 2.4.1 Slot 3



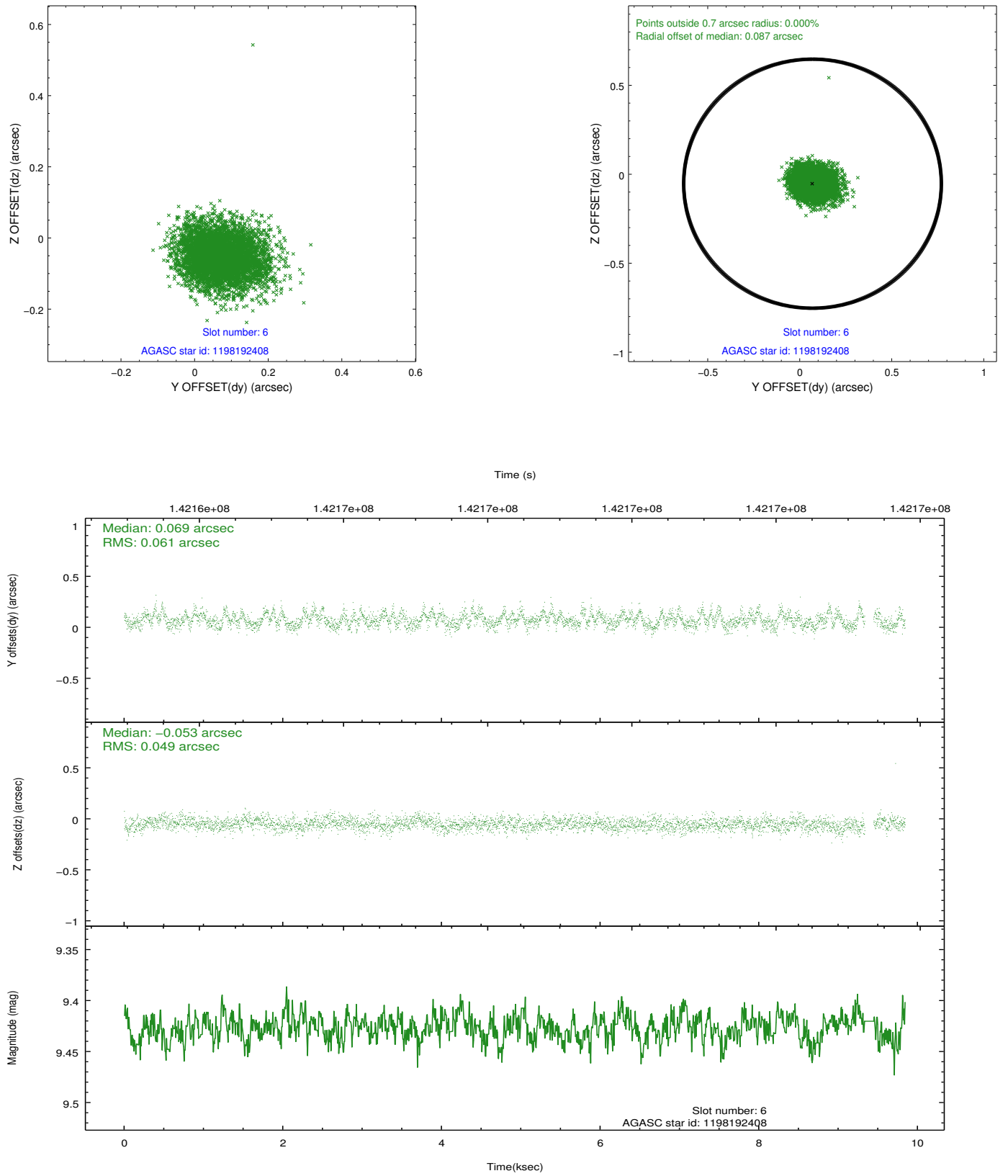
## 2.4.2 Slot 4



### 2.4.3 Slot 5

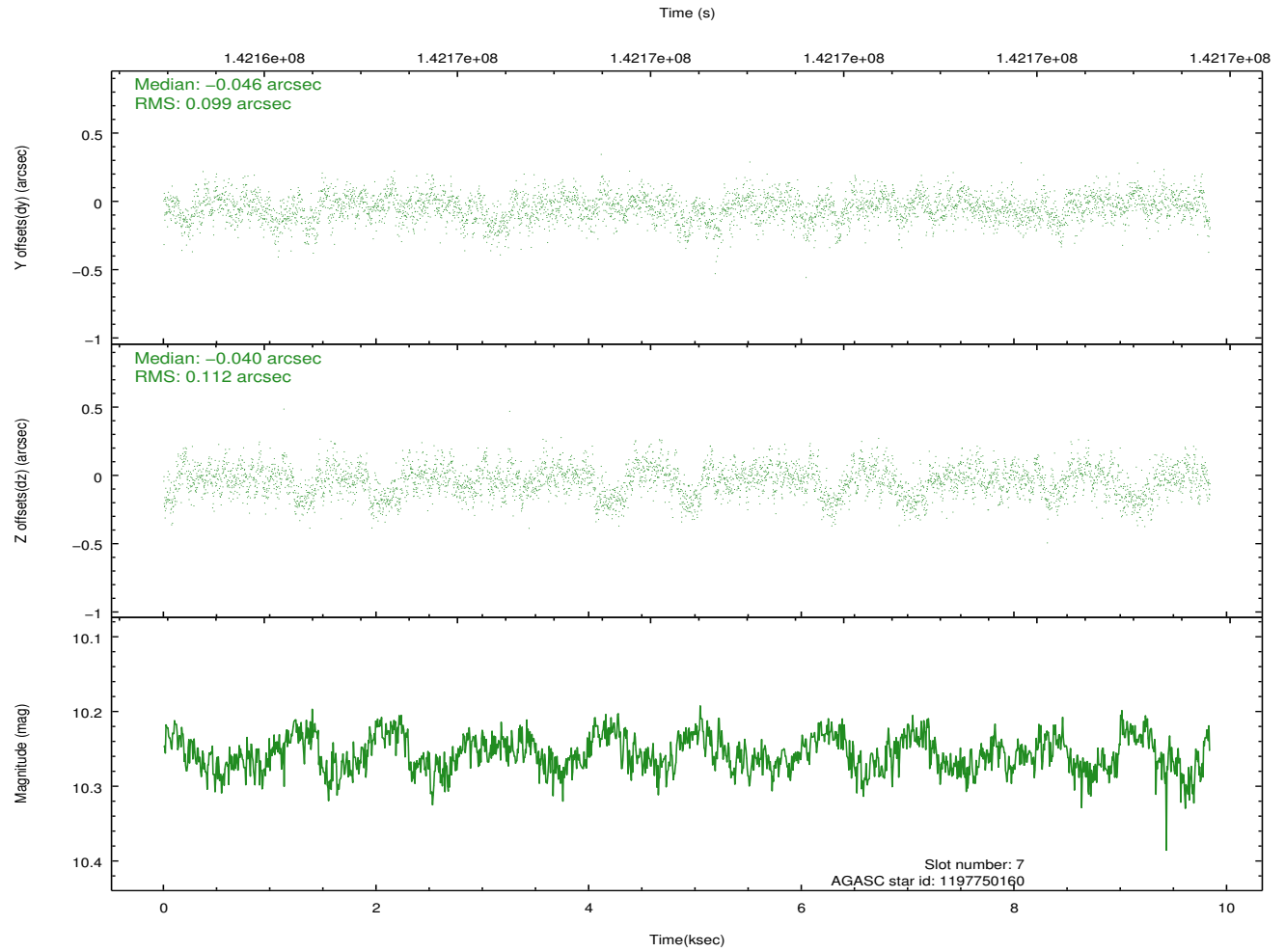
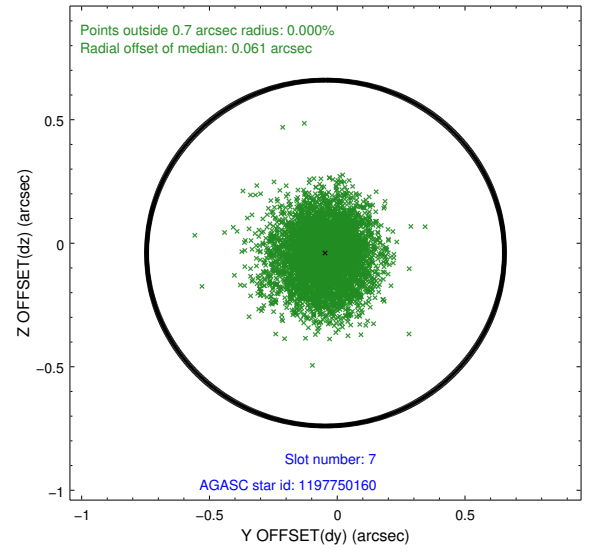
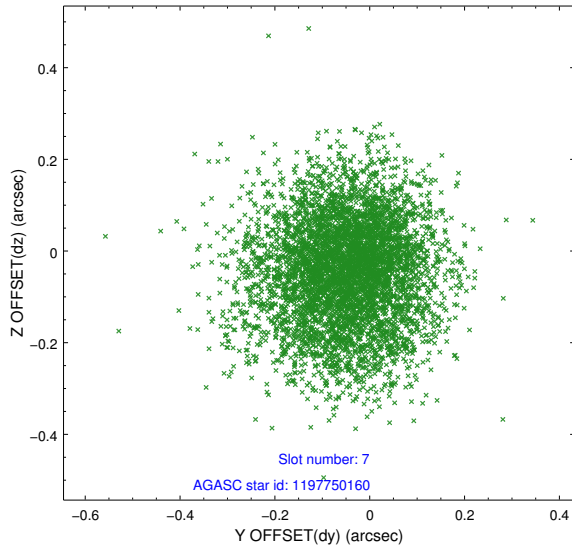


## 2.4.4 Slot 6



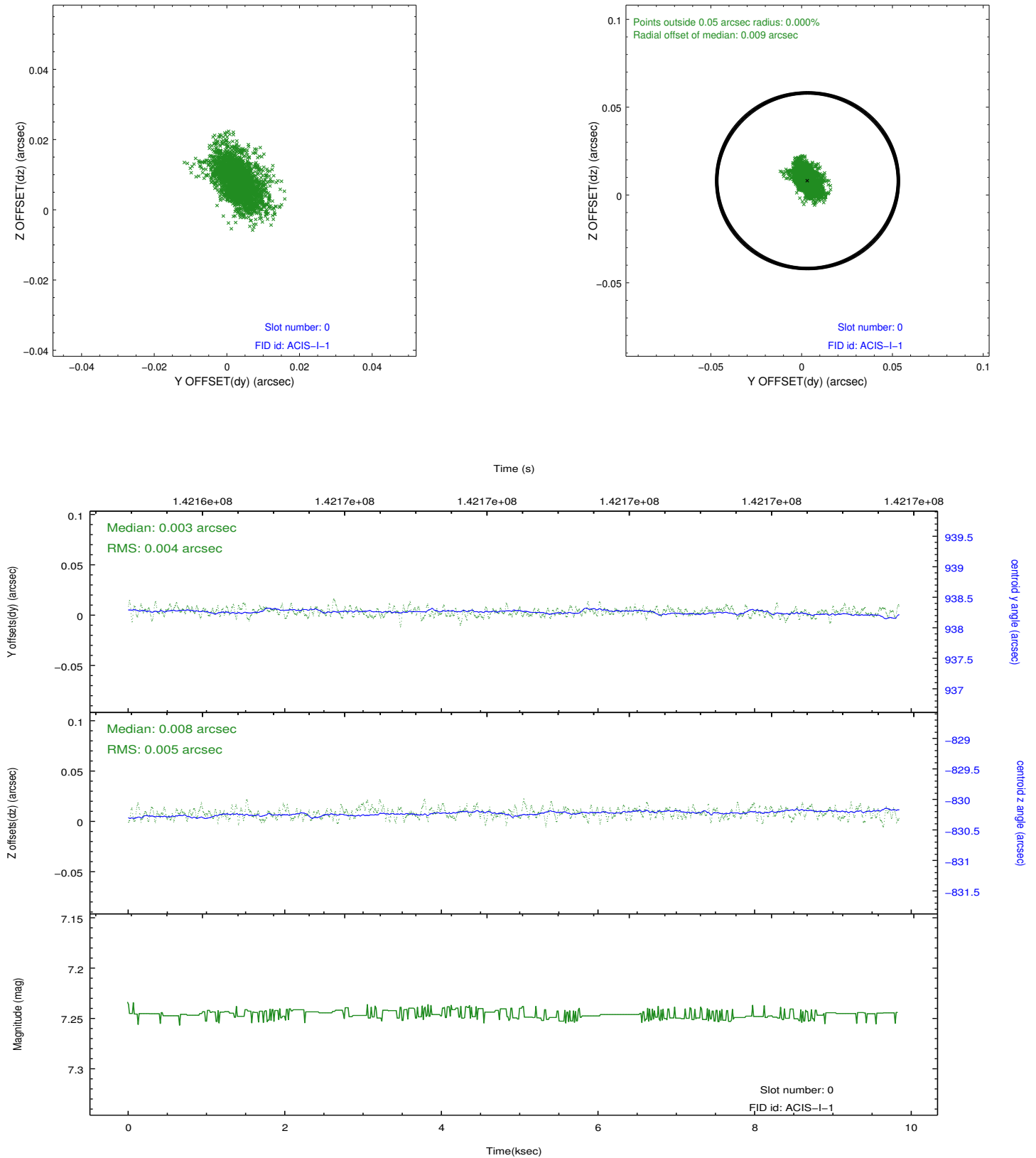


## 2.4.5 Slot 7

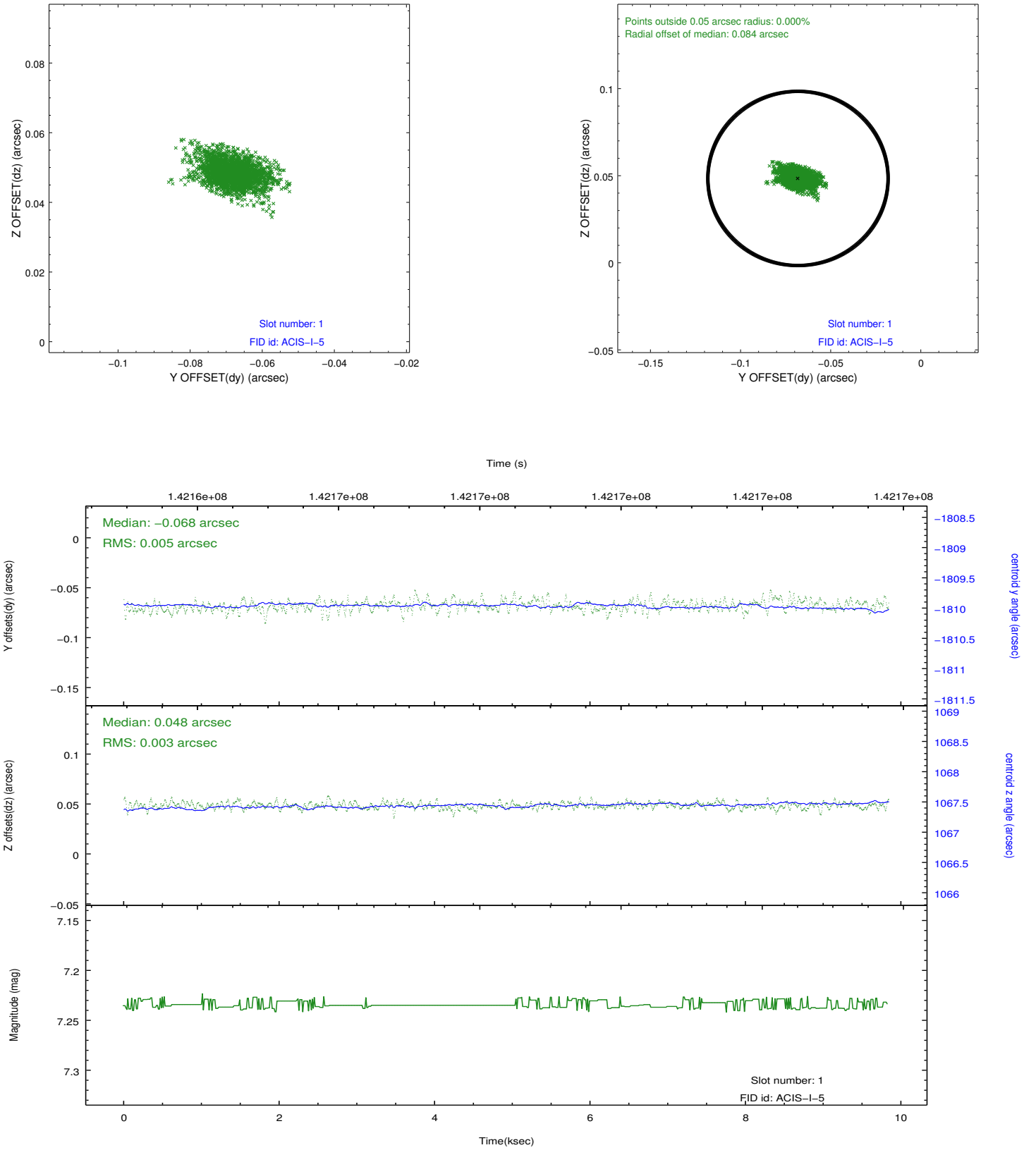


## 2.5 FID Slots

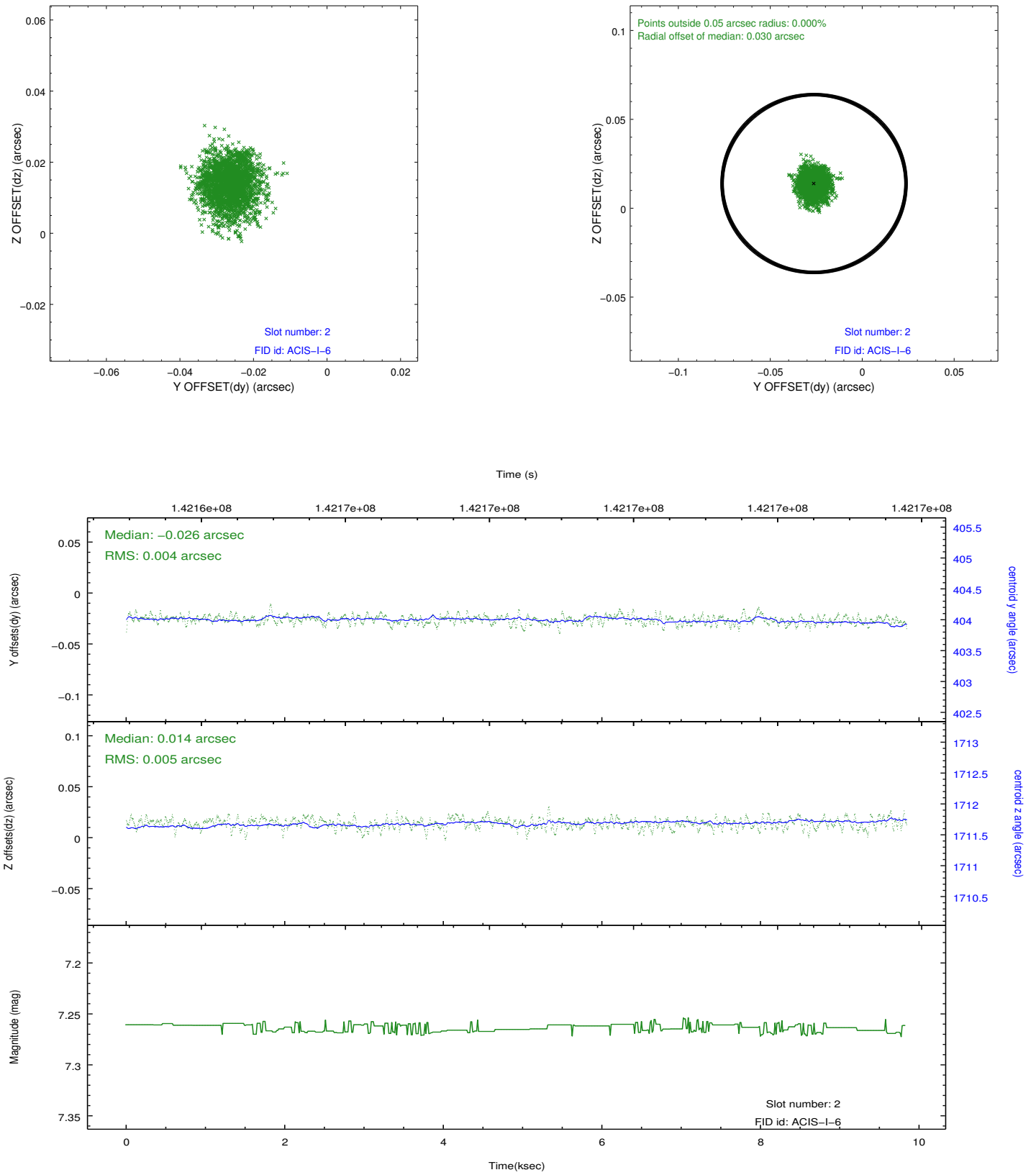
### 2.5.1 Slot 0



## 2.5.2 Slot 1



### 2.5.3 Slot 2



## A Summary

### A.1 Status

V&V Scientist	Jen Lauer
V&V Date (YYYY-MM-DD)	2012.10.19
V&V Edition	1
V&V Disposition and Status	OK
V&V Charge Time	9.407

### A.2 Comments