

V&V Reference Report

L2 ASCDS Version : 8.4.5

Observation 2947 - L2 Version 3
Chandra X-Ray Center

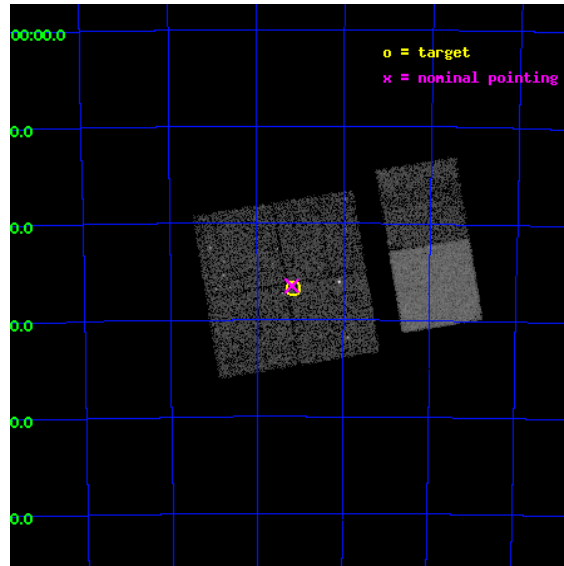
L2 Processing Date : Oct 11 2012

Contents

1	Front	2
2	OBI	3
2.1	OBI	3
2.1.1	Images	3
2.1.2	Bias	3
2.1.3	Parameters	4
2.1.4	Events	4
2.2	Compared Parameters	5
2.3	Aspect	6
2.4	Star Slots	9
2.4.1	Slot 3	9
2.4.2	Slot 4	10
2.4.3	Slot 5	11
2.4.4	Slot 6	12
2.4.5	Slot 7	13
2.5	FID Slots	14
2.5.1	Slot 0	14
2.5.2	Slot 1	15
2.5.3	Slot 2	16
A	Summary	17
A.1	Status	17
A.2	Comments	17

1 Front

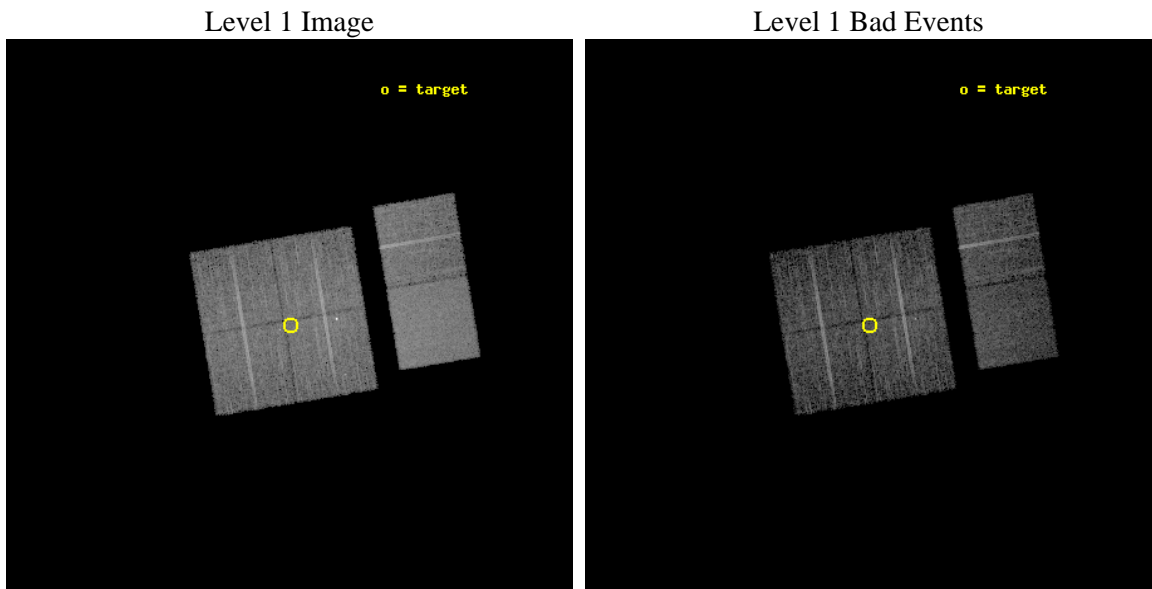
seq_num	600284	Sequence number
obs_id	2947	Observation id
title	A CHANDRA SURVEY OF THE SMC	Proposal title
observer	Dr Andreas Zezas	Principal investigator
object	SMC FIELD 5	Source name
dtcycle	0	
cycle	P	events from which exps? Prim/Second/Both
ra_targ	13.289583	Observer's specified target RA [deg]
dec_targ	-72.445556	Observer's specified target Dec [deg]
ra_nom	13.297693744819	Nominal RA [deg]
dec_nom	-72.441640298758	Nominal Dec [deg]
roll_nom	80.571681626322	Nominal Roll [deg]
revision	3	Processing version of data
ontime	7765.0564219058	Sum of GTIs [s]
livetime	7666.7306019359	Livetime [s]
ontime0	7764.9333019257	Sum of GTIs [s]
ontime1	7764.9743418992	Sum of GTIs [s]
ontime2	7765.0153819025	Sum of GTIs [s]
ontime3	7765.0564219058	Sum of GTIs [s]
ontime6	7765.1385019124	Sum of GTIs [s]
ontime7	7765.0974619091	Sum of GTIs [s]
l2events	58453	Number of level 2 events



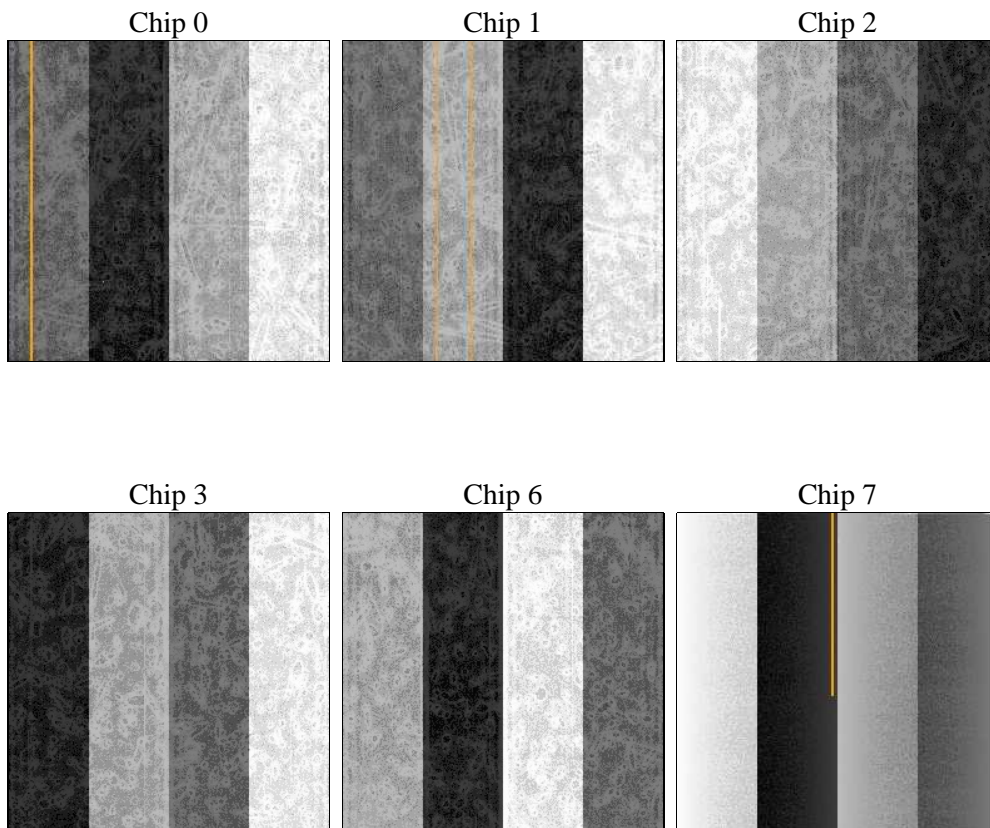
2 OBI

2.1 OBI

2.1.1 Images



2.1.2 Bias



2.1.3 Parameters

obi_num	1	Obi number	sched_exp_time	7800.000000	[s] Scheduled observation exposure time
ascdsver	8.4.5	Processing system revision	ontime	7765.0564219058	Sum of GTIs [s]
caldsver	4.5.2	 	ontime0	7764.9333019257	Sum of GTIs [s]
date	2012-10-11T15:27:57	Date and time of file creation	ontime1	7764.9743418992	Sum of GTIs [s]
revision	3	Processing version of data	ontime2	7765.0153819025	Sum of GTIs [s]
			ontime3	7765.0564219058	Sum of GTIs [s]
			ontime6	7765.1385019124	Sum of GTIs [s]
			ontime7	7765.0974619091	Sum of GTIs [s]
			l1events	312961	Number of level 1 events

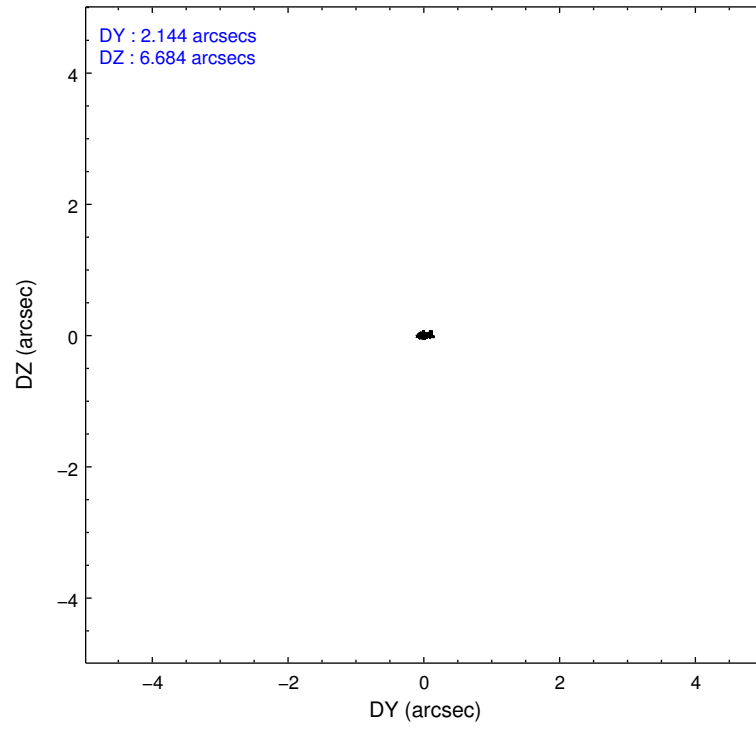
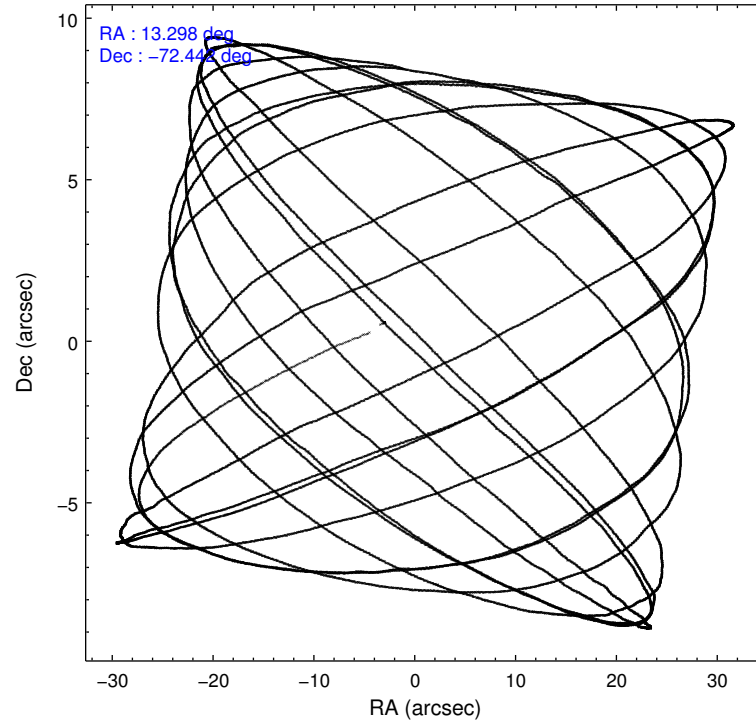
2.1.4 Events

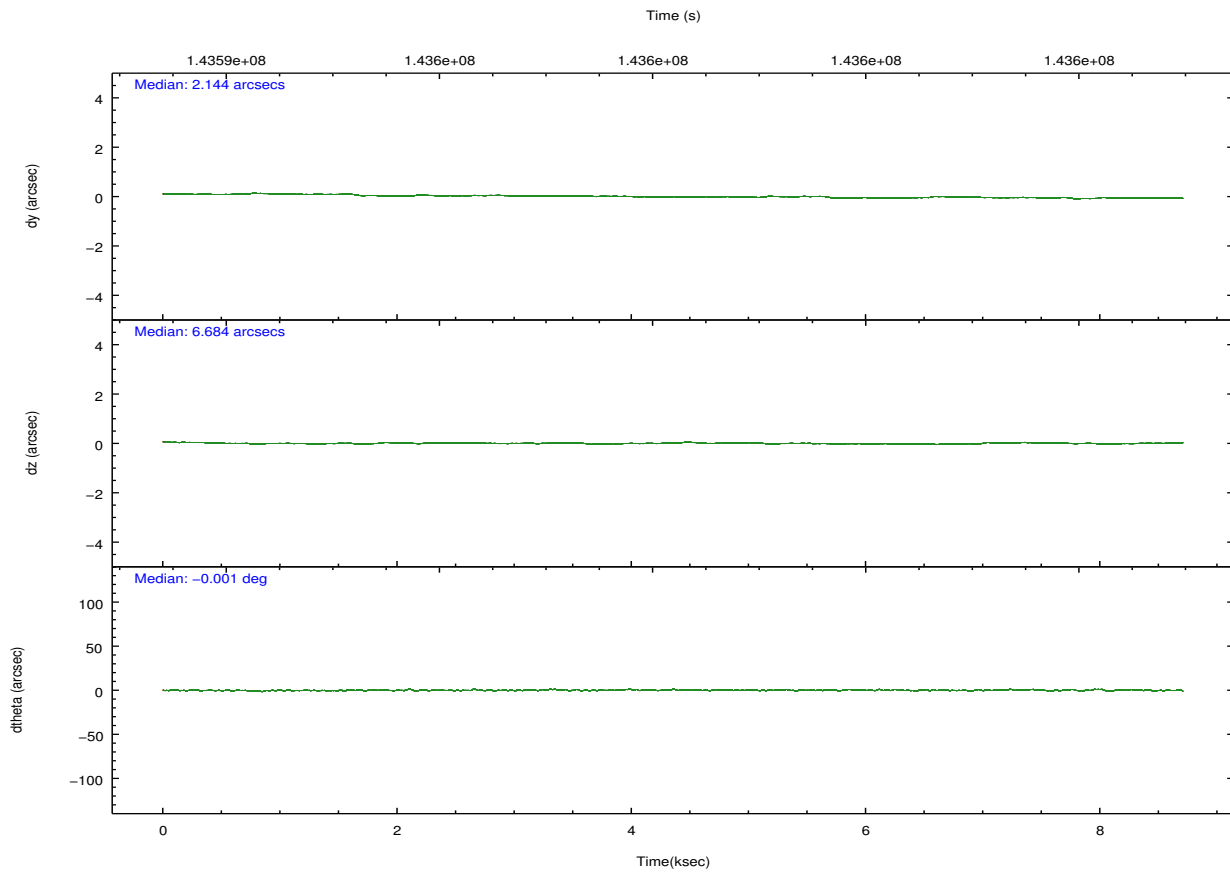
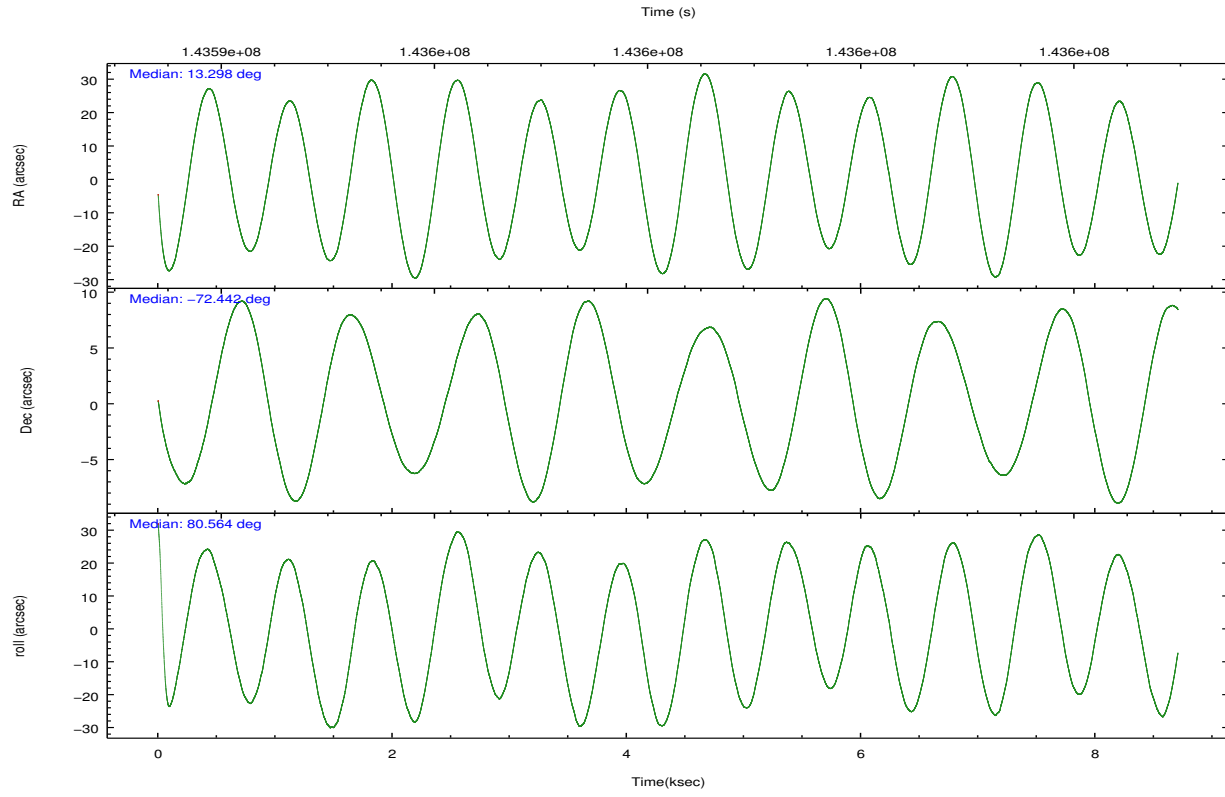
	ccd 0	ccd 1	ccd 2	ccd 3	ccd 6	ccd 7		ccd 0	ccd 1	ccd 2	ccd 3	ccd 6	ccd 7
level 1 events	45924	46661	51629	53870	50426	64451	grade 0 events	3271	3006	2857	4456	2652	2658
rejected events	38693	39560	45074	44978	43812	36954		7%	6%	5%	8%	5%	4%
rejected %	84%	84%	87%	83%	86%	57%	grade 1 events	31	24	28	89	27	68
								0%	0%	0%	0%	0%	0%
							grade 2 events	1503	1473	1458	1727	1430	5596
								3%	3%	2%	3%	2%	8%
							grade 3 events	633	661	556	708	576	2443
								1%	1%	1%	1%	1%	3%
							grade 4 events	604	665	554	694	601	2493
								1%	1%	1%	1%	1%	3%
							grade 5 events	1743	1901	1657	1936	2187	6010
								3%	4%	3%	3%	4%	9%
							grade 6 events	1222	1298	1131	1310	1360	14318
								2%	2%	2%	2%	2%	22%
							grade 7 events	36917	37633	43388	42950	41593	30865
								80%	80%	84%	79%	82%	47%

2.2 Compared Parameters

Parameter	Planned	Actual	Parameter	Planned	Actual
Instrument	ACIS	ACIS	Obspar format version number	7	7
Detector	ACIS-012367	ACIS-012367	Obspar file type	PREDICTED	ACTUAL
Grating	NONE	NONE	Obspar update status	NONE	UPDATED
Data mode	FAINT	FAINT	Number of optional ACIS chips dropped	0	0
Observation mode	POINTING	POINTING	On-chip summing requested	N	N
[deg] Pointing RA	13.330107	13.29769374481924	Subarray requested	NONE	NONE
[deg] Pointing Dec	-72.467244	-72.44164029875837	Alternating exposures requested	N	N
[deg] Pointing Roll	80.393840	80.57168162632247	[s] Primary exposure time	0.000000	3.2
[mm] SIM focus pos	-0.782348	-0.7809083437167272			
[mm] SIM defocus	0	0.001439871863259334			
[mm] SIM translation stage pos	-233.592463	-233.5874344608287			
[mm] SIM translation stage offset	0	-0.005018542100998502			
[s] Observation start time (MET)	143594750.184000	143593430.89227			
Observation start date	2002-07-20T23:24:46	2002-07-20T23:03:50			
[s] Observation end time (MET)	143602550.184000	143603201.70517			
Observation end date	2002-07-21T01:34:46	2002-07-21T01:46:41			
Read mode	TIMED	TIMED			

2.3 Aspect



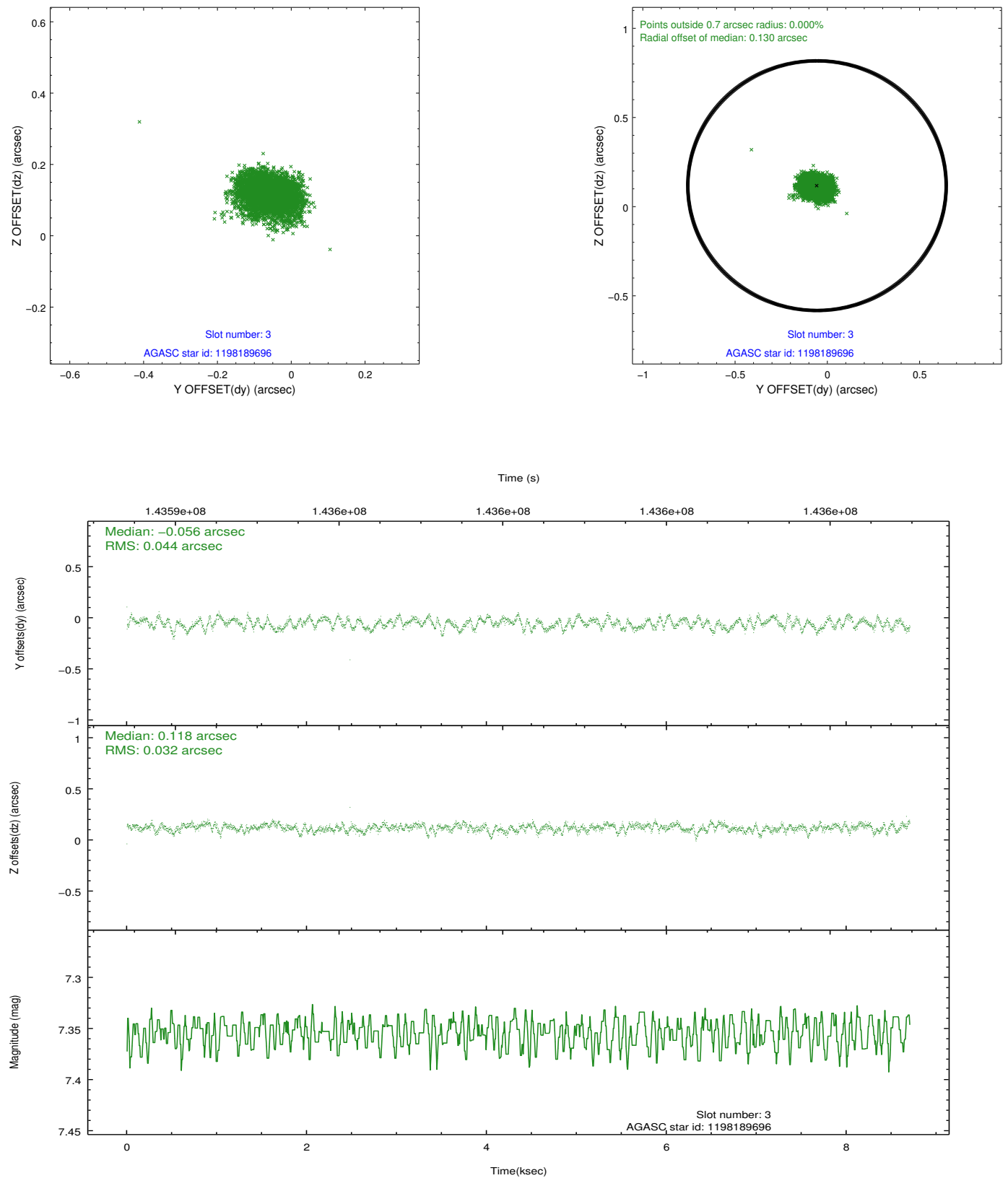


Slot Statistics

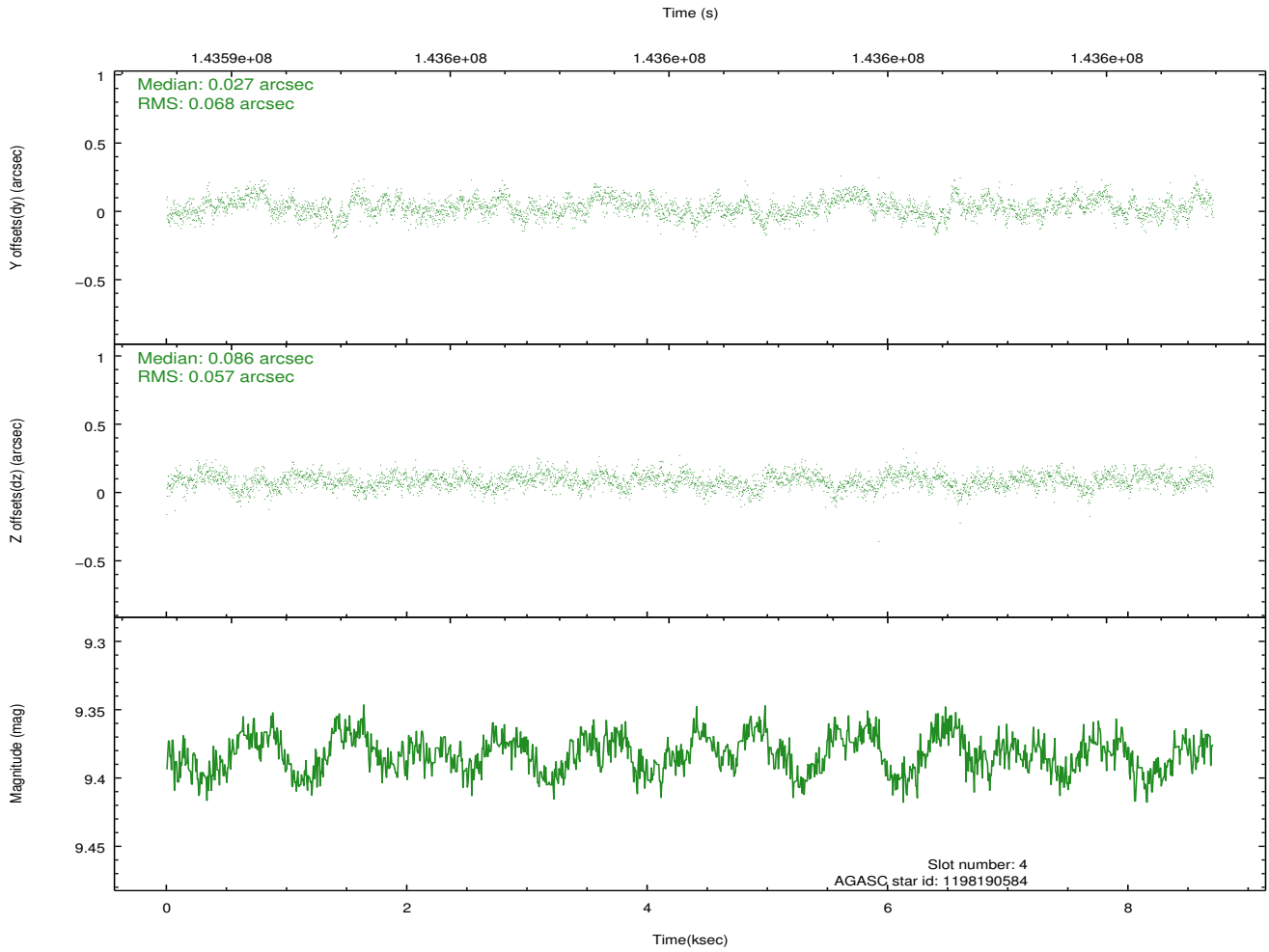
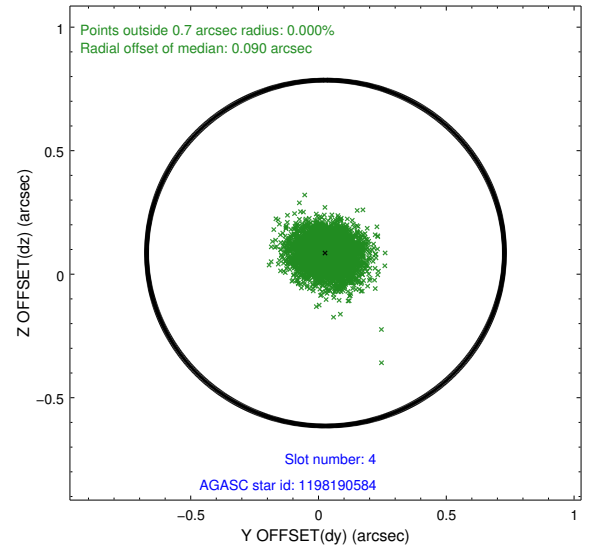
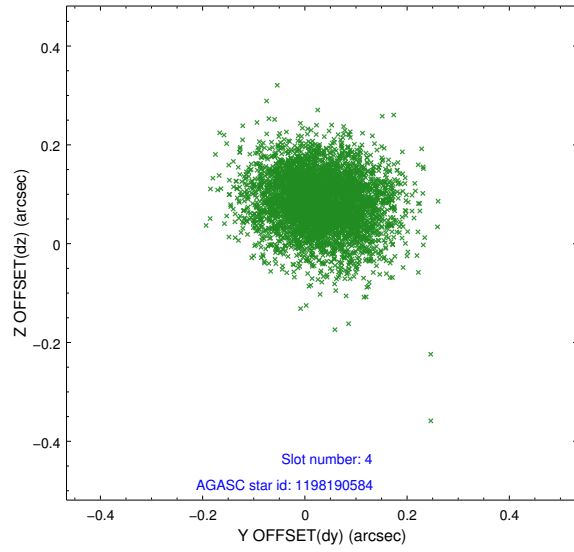
slot	status	id	mag	n_pts	med_dy	med_dz	dr1	dr2	ra	dec	mean_y	mean_z
0	FID	ACIS-I-1	7.25	2124	-0.002	0.011	0.006	0.010	0.000000	0.000000	937.64	-830.08
1	FID	ACIS-I-5	7.24	2124	-0.052	0.048	0.006	0.010	0.000000	0.000000	-1810.12	1067.19
2	FID	ACIS-I-6	7.26	2124	-0.038	0.011	0.006	0.011	0.000000	0.000000	402.52	1712.33
3	GUIDE	1198189696	7.35	4248	-0.056	0.118	0.057	0.093	15.223750	-72.697522	-510.01	-2141.92
4	GUIDE	1198190584	9.38	4245	0.027	0.086	0.094	0.154	13.276396	-73.109281	-2287.99	-330.56
5	GUIDE	1198191400	8.39	4233	-0.042	-0.204	0.054	0.089	11.617890	-72.595865	-790.55	1736.12
6	GUIDE	1197742272	8.85	4226	0.008	-0.056	0.069	0.112	11.595927	-71.782422	2077.31	2332.16
7	GUIDE	1197750640	9.75	4241	0.067	0.059	0.114	0.189	15.758835	-72.088048	1742.45	-2430.55

2.4 Star Slots

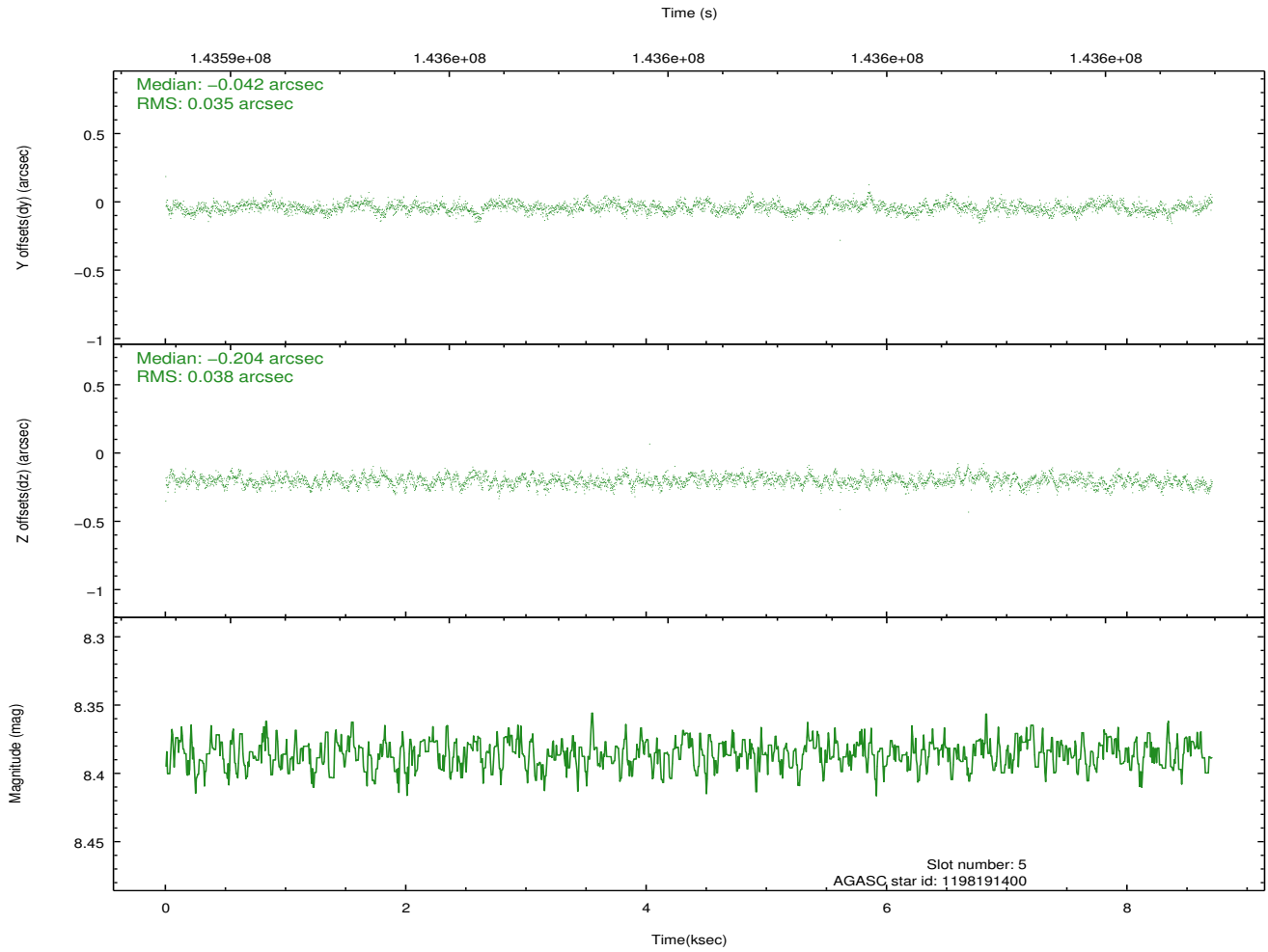
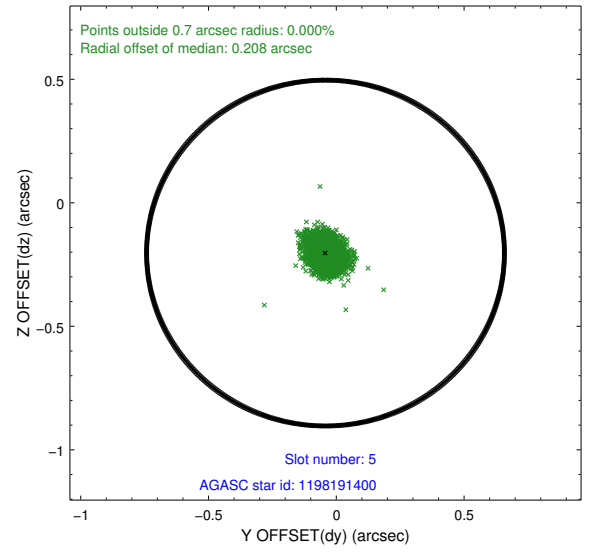
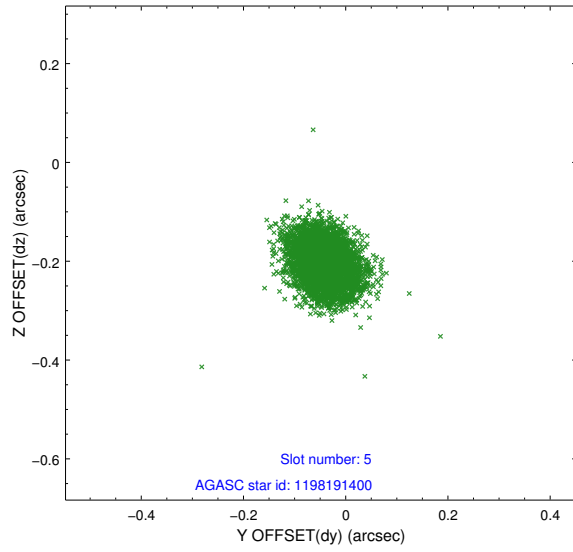
2.4.1 Slot 3



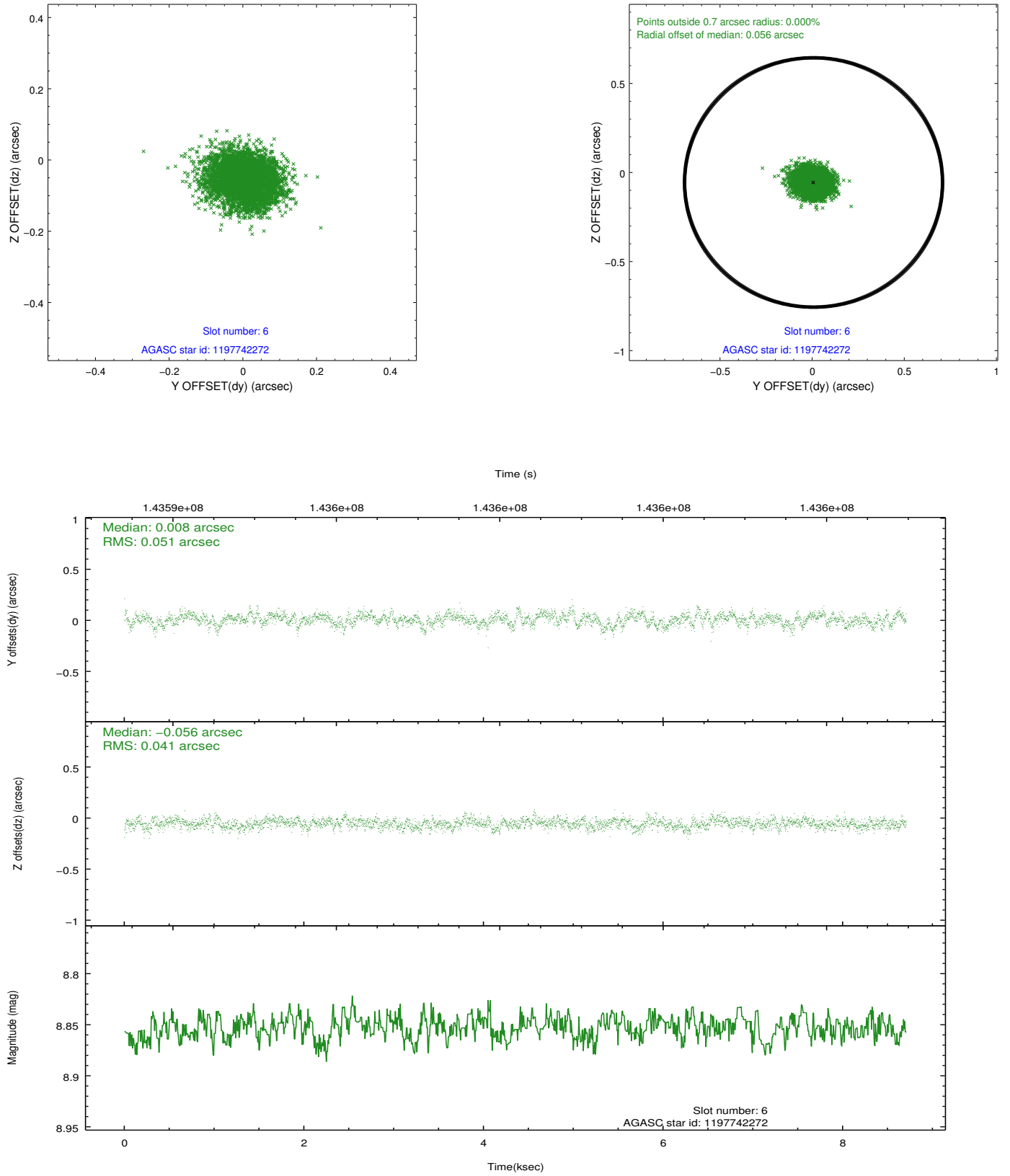
2.4.2 Slot 4



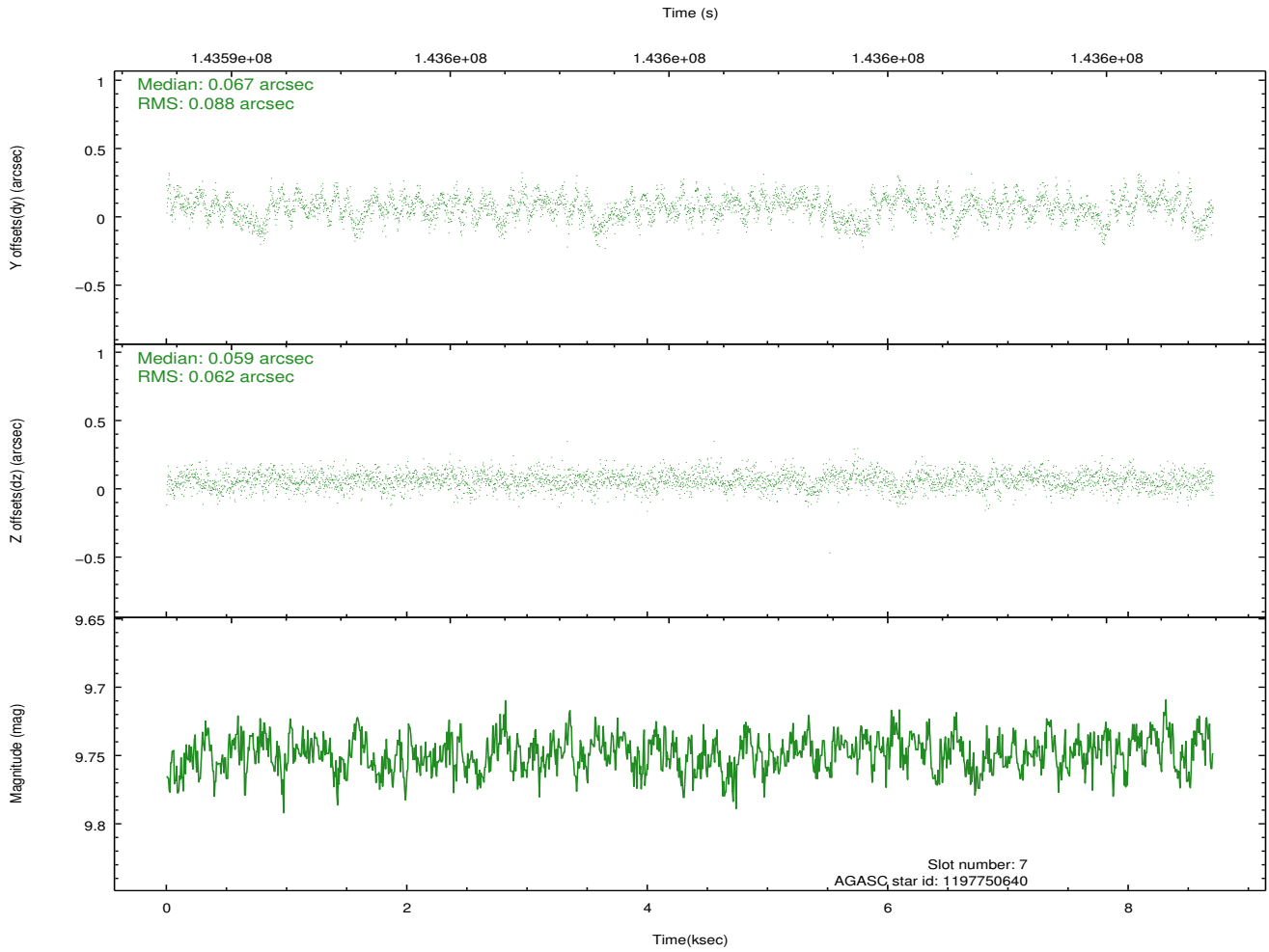
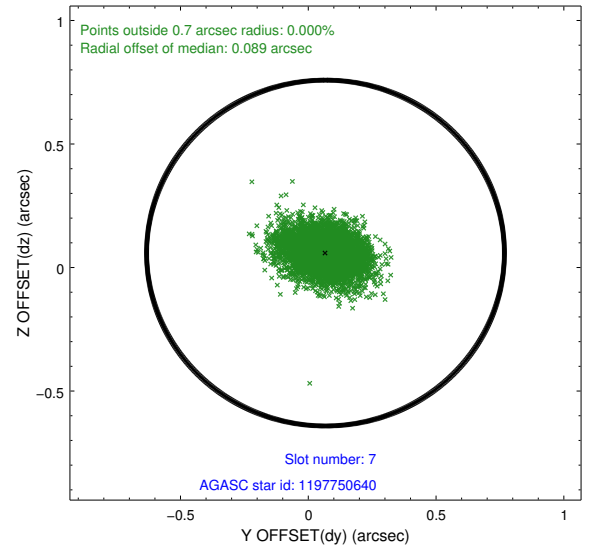
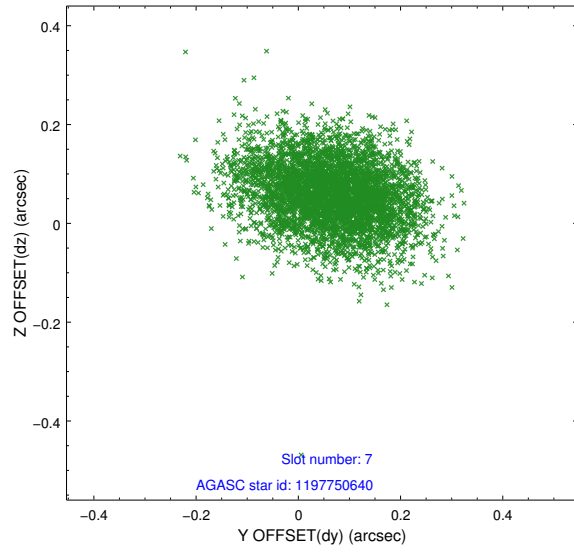
2.4.3 Slot 5



2.4.4 Slot 6

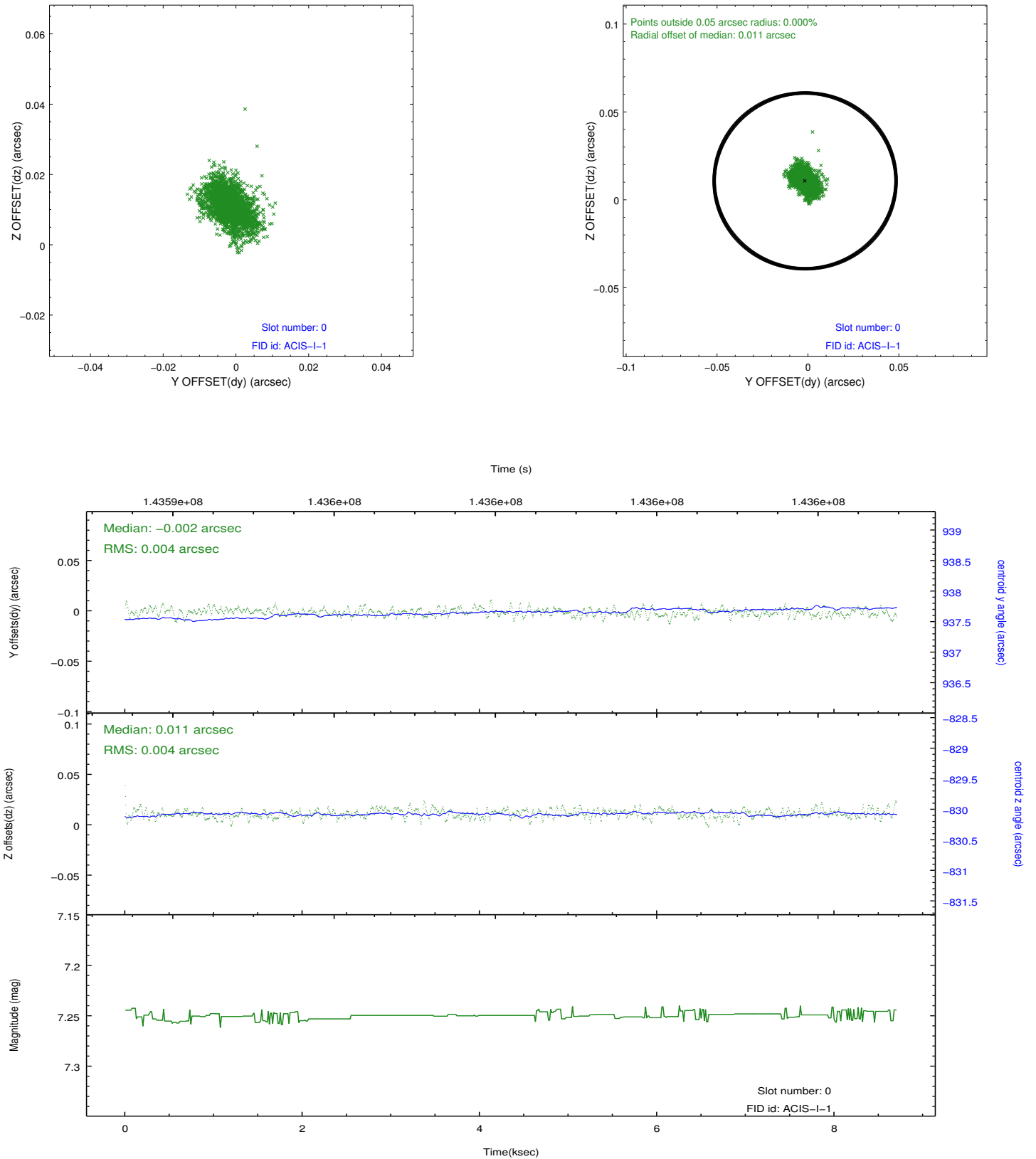


2.4.5 Slot 7

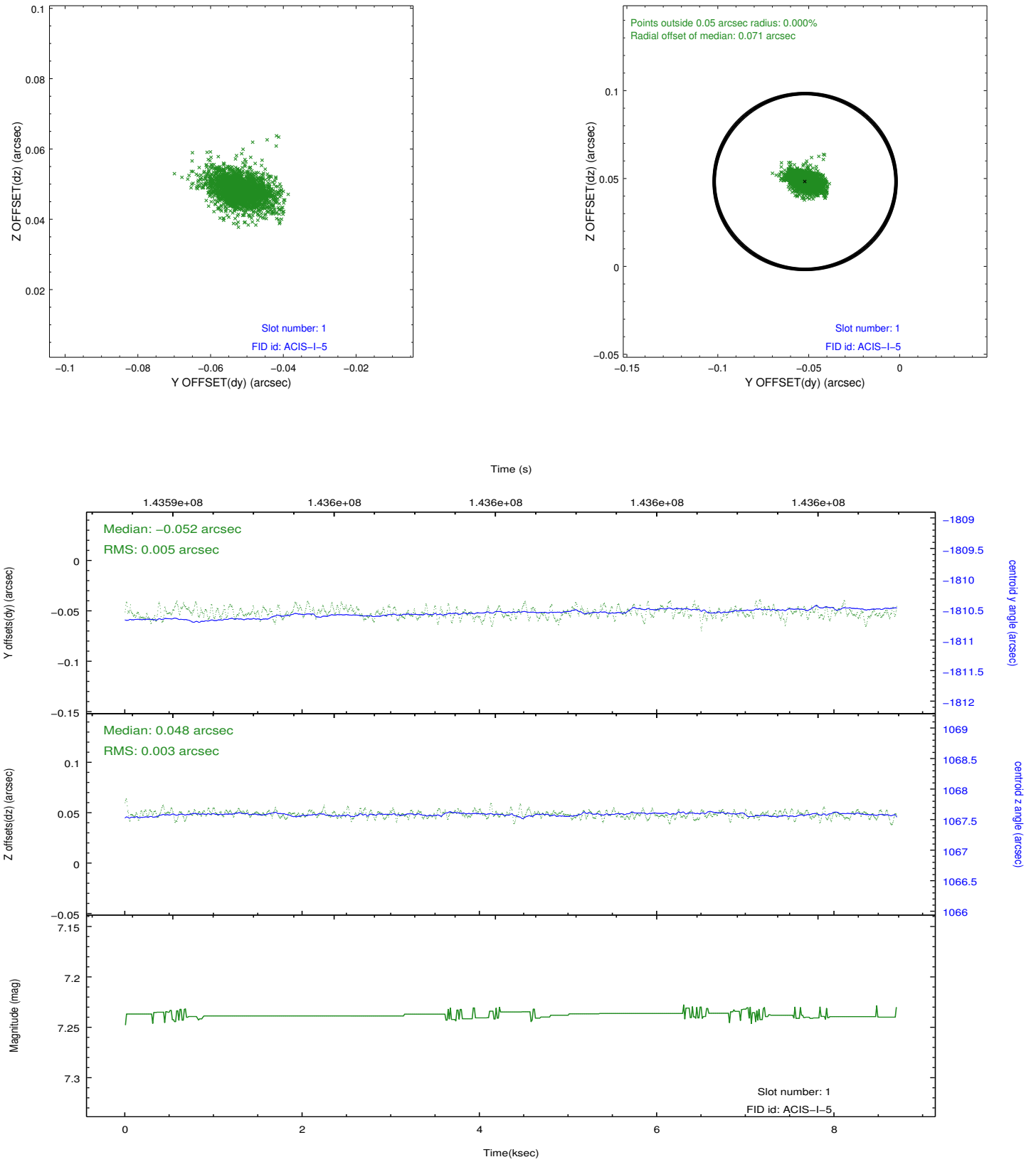


2.5 FID Slots

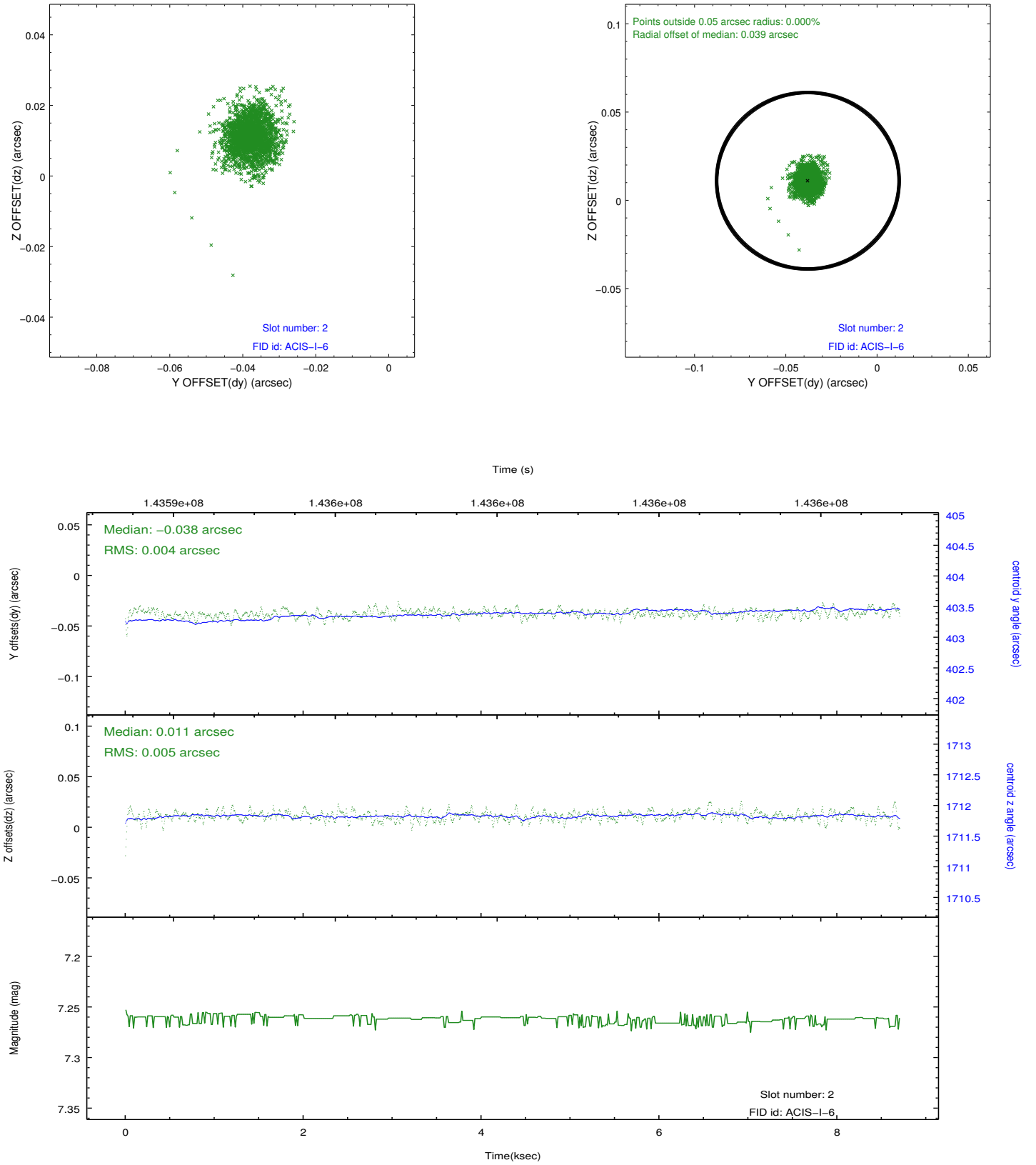
2.5.1 Slot 0



2.5.2 Slot 1



2.5.3 Slot 2



A Summary

A.1 Status

V&V Scientist	Beth Sundheim
V&V Date (YYYY-MM-DD)	2012.10.19
V&V Edition	1
V&V Disposition and Status	OK
V&V Charge Time	7.766

A.2 Comments