

# V&V Reference Report

## L2 ASCDS Version : 8.4.5

Observation 2946 - L2 Version 3  
Chandra X-Ray Center

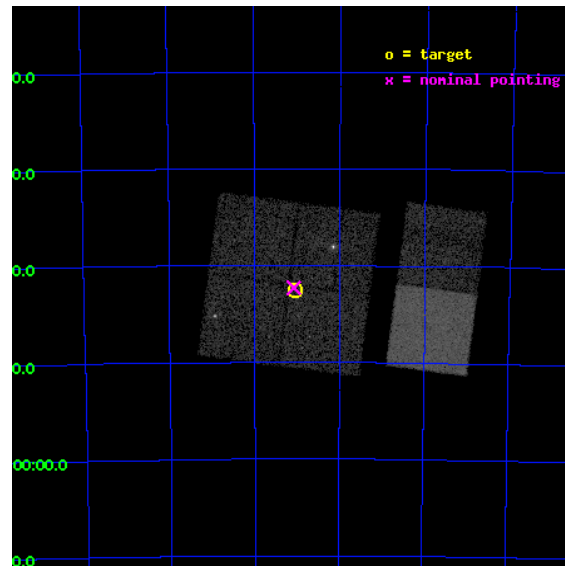
L2 Processing Date : Oct 10 2012

## Contents

<b>1</b>	<b>Front</b>	<b>2</b>
<b>2</b>	<b>OBI</b>	<b>3</b>
2.1	OBI . . . . .	3
2.1.1	Images . . . . .	3
2.1.2	Bias . . . . .	3
2.1.3	Parameters . . . . .	4
2.1.4	Events . . . . .	4
2.2	Compared Parameters . . . . .	5
2.3	Aspect . . . . .	6
2.4	Star Slots . . . . .	9
2.4.1	Slot 3 . . . . .	9
2.4.2	Slot 4 . . . . .	10
2.4.3	Slot 5 . . . . .	11
2.4.4	Slot 6 . . . . .	12
2.4.5	Slot 7 . . . . .	13
2.5	FID Slots . . . . .	14
2.5.1	Slot 0 . . . . .	14
2.5.2	Slot 1 . . . . .	15
2.5.3	Slot 2 . . . . .	16
<b>A</b>	<b>Summary</b>	<b>17</b>
A.1	Status . . . . .	17
A.2	Comments . . . . .	17

# 1 Front

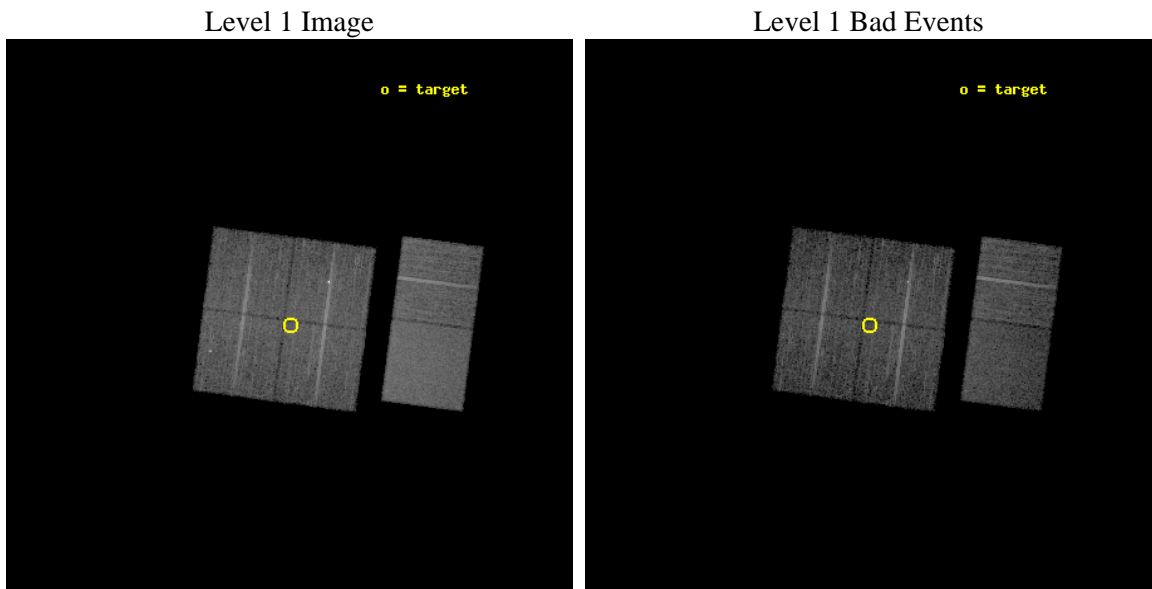
seq_num	600283	Sequence number
obs_id	2946	Observation id
title	A CHANDRA SURVEY OF THE SMC	Proposal title
observer	Dr Andreas Zezas	Principal investigator
object	SMC FIELD 6	Source name
dtcycle	0	&#160
cycle	P	events from which exps? Prim/Second/Both
ra_targ	13.264167	Observer's specified target RA [deg]
dec_targ	-72.709583	Observer's specified target Dec [deg]
ra_nom	13.268313236745	Nominal RA [deg]
dec_nom	-72.705062177594	Nominal Dec [deg]
roll_nom	97.476237271875	Nominal Roll [deg]
revision	3	Processing version of data
ontime	9443.0410495996	Sum of GTIs [s]
livetime	9323.4675779129	Livetime [s]
ontime0	9442.9179296196	Sum of GTIs [s]
ontime1	9442.958969593	Sum of GTIs [s]
ontime2	9443.0000095963	Sum of GTIs [s]
ontime3	9443.0410495996	Sum of GTIs [s]
ontime6	9443.1231296062	Sum of GTIs [s]
ontime7	9443.0820896029	Sum of GTIs [s]
l2events	72435	Number of level 2 events



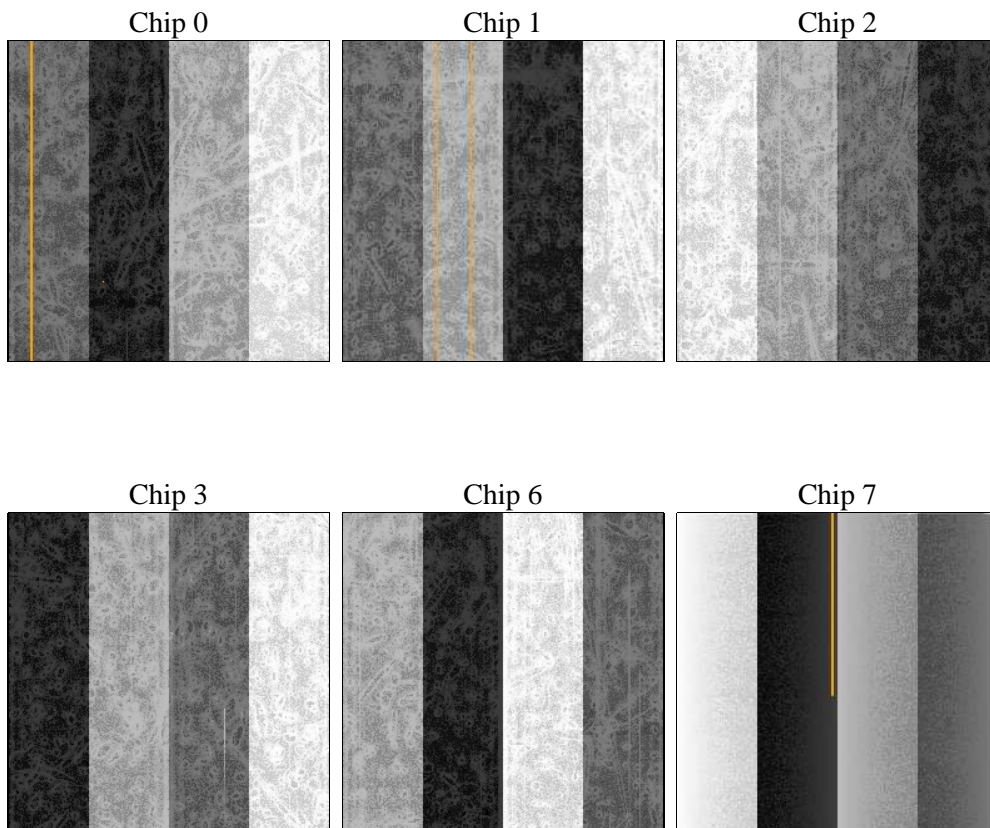
## 2 OBI

### 2.1 OBI

#### 2.1.1 Images



#### 2.1.2 Bias



### 2.1.3 Parameters

obi_num	0	Obi number	sched_exp_time	9650.000000	[s] Scheduled observation exposure time
ascdsver	8.4.5	Processing system revision	ontime	9443.0410495996	Sum of GTIs [s]
caldsver	4.5.2	&#160	ontime0	9442.9179296196	Sum of GTIs [s]
date	2012-10-10T03:58:32	Date and time of file creation	ontime1	9442.958969593	Sum of GTIs [s]
revision	3	Processing version of data	ontime2	9443.0000095963	Sum of GTIs [s]
			ontime3	9443.0410495996	Sum of GTIs [s]
			ontime6	9443.1231296062	Sum of GTIs [s]
			ontime7	9443.0820896029	Sum of GTIs [s]
			l1events	403875	Number of level 1 events

### 2.1.4 Events

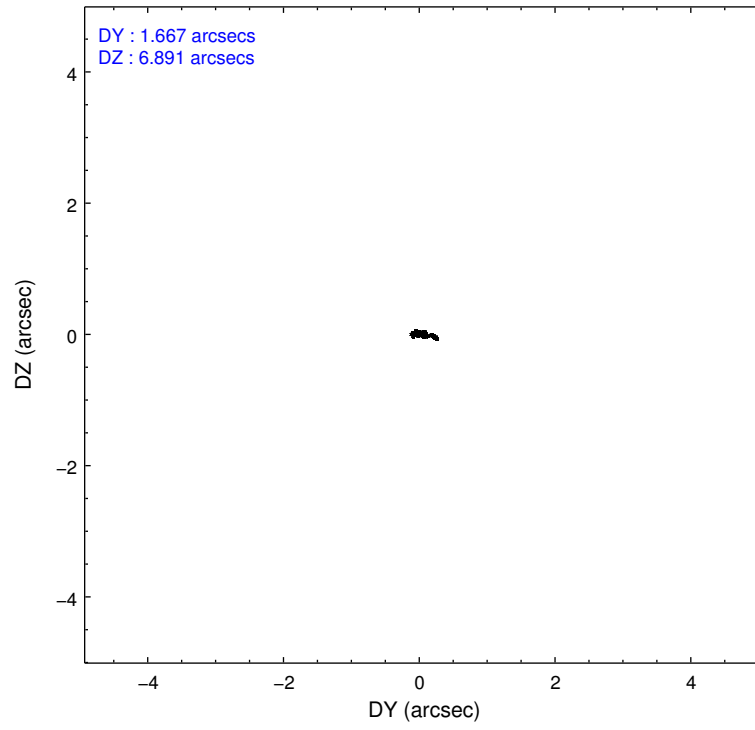
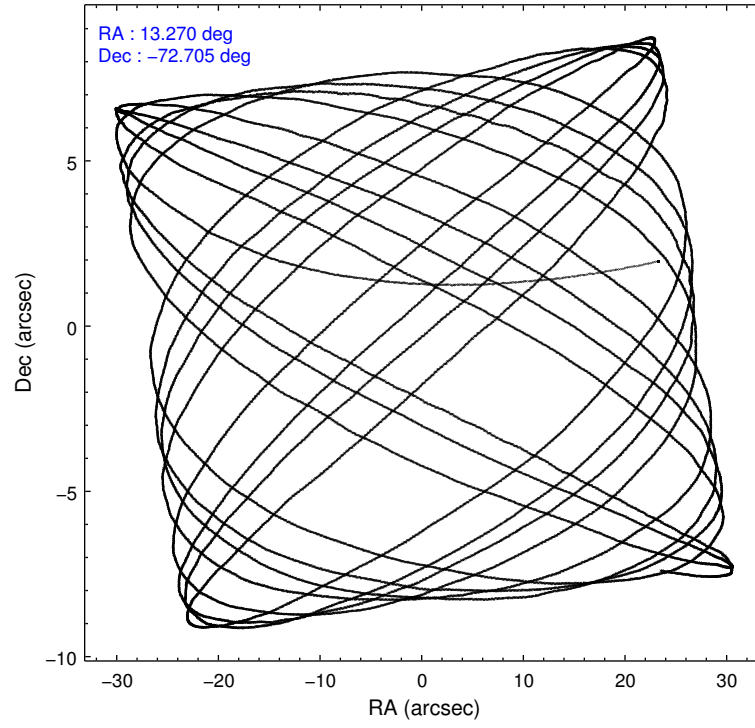
	ccd 0	ccd 1	ccd 2	ccd 3	ccd 6	ccd 7		ccd 0	ccd 1	ccd 2	ccd 3	ccd 6	ccd 7
level 1 events	58304	60639	69632	62947	69245	83108	grade 0 events	3418	3594	7625	3357	3057	3233
rejected events	50503	52173	56235	55222	61588	48620		5%	5%	10%	5%	4%	3%
rejected %	86%	86%	80%	87%	88%	58%	grade 1 events	37	26	288	38	42	75
								0%	0%	0%	0%	0%	0%
							grade 2 events	1607	1708	2435	1648	1646	6813
								2%	2%	3%	2%	2%	8%
							grade 3 events	756	824	930	738	730	3164
								1%	1%	1%	1%	1%	3%
							grade 4 events	685	799	915	670	718	3040
								1%	1%	1%	1%	1%	3%
							grade 5 events	2360	2516	2475	2536	2804	8051
								4%	4%	3%	4%	4%	9%
							grade 6 events	1340	1542	1500	1313	1508	18256
								2%	2%	2%	2%	2%	21%
							grade 7 events	48101	49630	53464	52647	58740	40476
								82%	81%	76%	83%	84%	48%

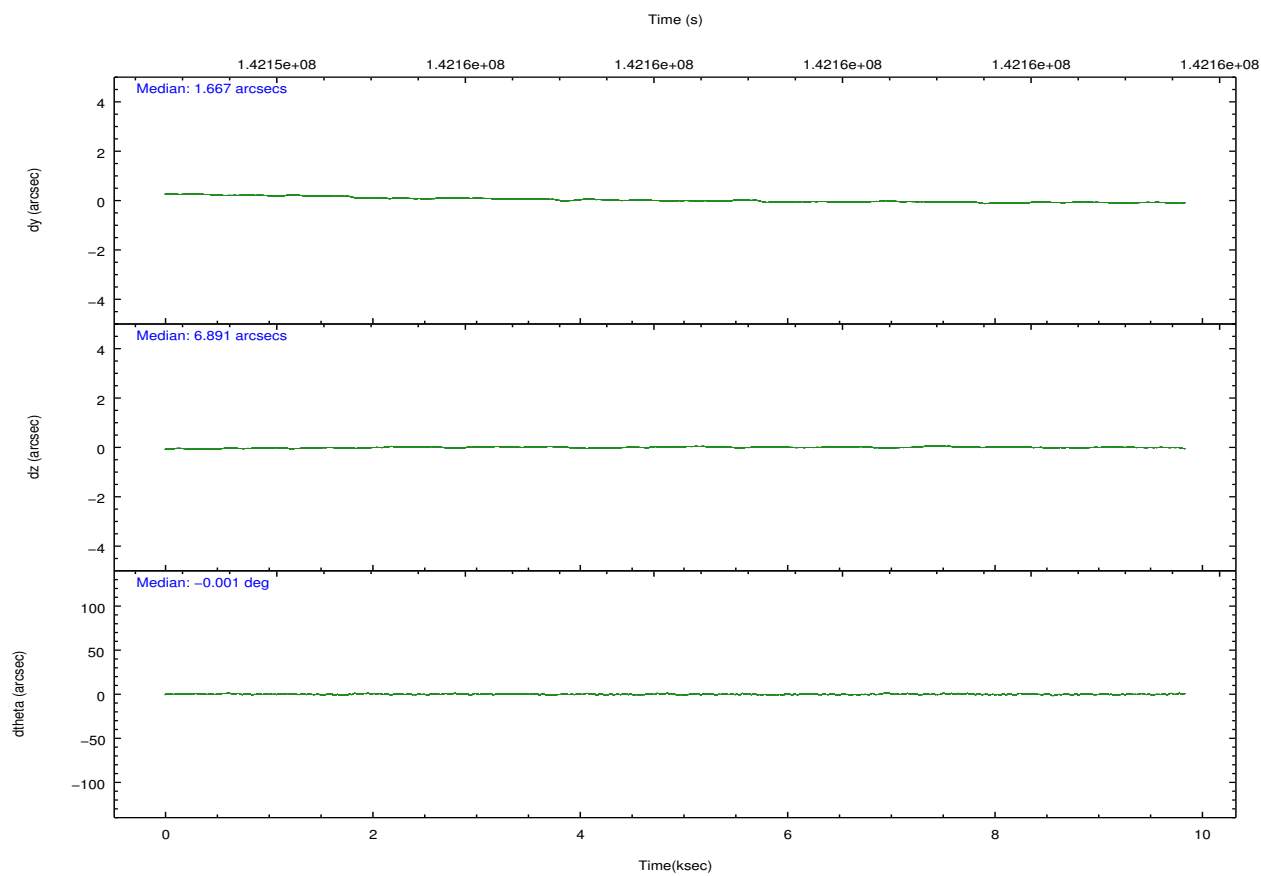
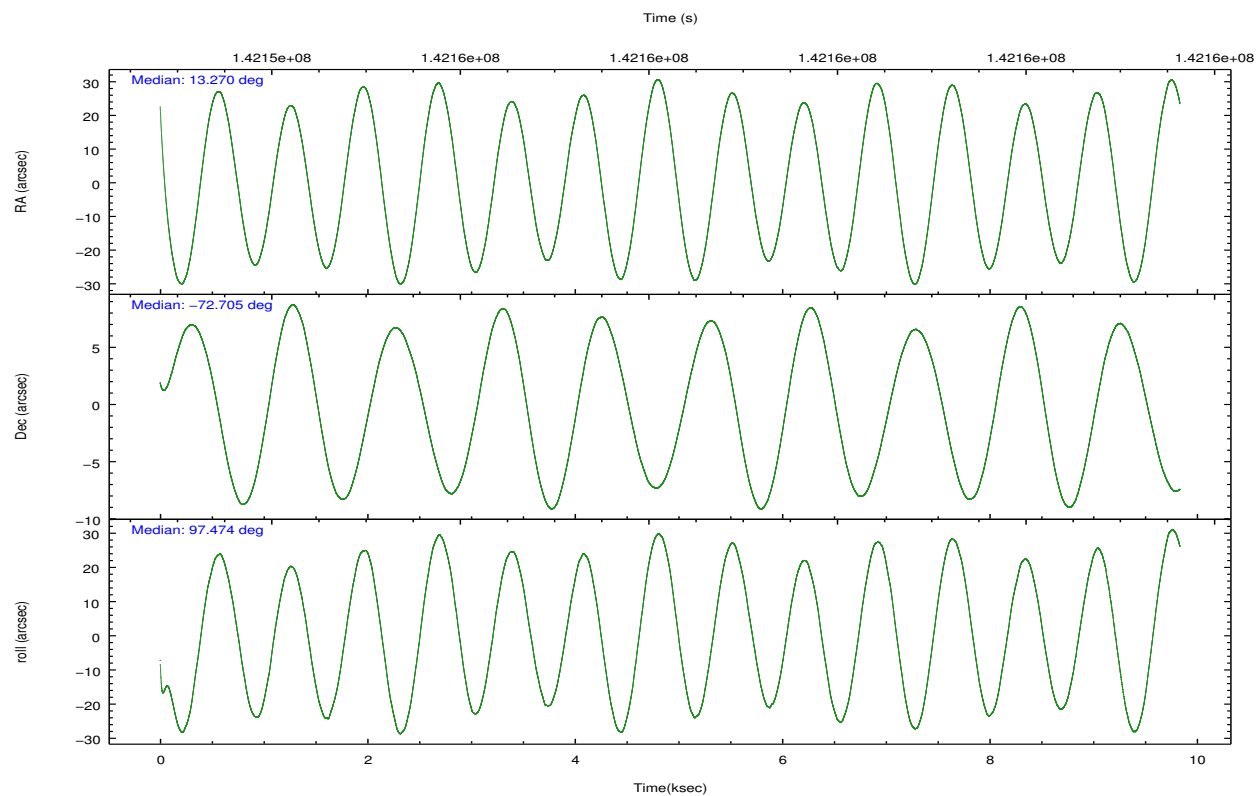


## 2.2 Compared Parameters

Parameter	Planned	Actual	Parameter	Planned	Actual
Instrument	ACIS	ACIS	Obspar format version number	7	7
Detector	ACIS-012367	ACIS-012367	Obspar file type	PREDICTED	ACTUAL
Grating	NONE	NONE	Obspar update status	NONE	UPDATED
Data mode	FAINT	FAINT	Number of optional ACIS chips dropped	0	0
Observation mode	POINTING	POINTING	On-chip summing requested	N	N
[deg] Pointing RA	13.324735	13.26831323674537	Subarray requested	NONE	NONE
[deg] Pointing Dec	-72.726762	-72.70506217759394	Alternating exposures requested	N	N
[deg] Pointing Roll	97.321473	97.47623727187522	[s] Primary exposure time	0.000000	3.2
[mm] SIM focus pos	-0.782348	-0.7809083437167272			
[mm] SIM defocus	0	0.001439871863259334			
[mm] SIM translation stage pos	-233.592463	-233.5874344608287			
[mm] SIM translation stage offset	0	-0.005018542100998502			
[s] Observation start time (MET)	142153493.184000	142152484.2956			
Observation start date	2002-07-04T07:03:49	2002-07-04T06:48:04			
[s] Observation end time (MET)	142163143.184000	142163277.03354			
Observation end date	2002-07-04T09:44:39	2002-07-04T09:47:57			
Read mode	TIMED	TIMED			

## 2.3 Aspect



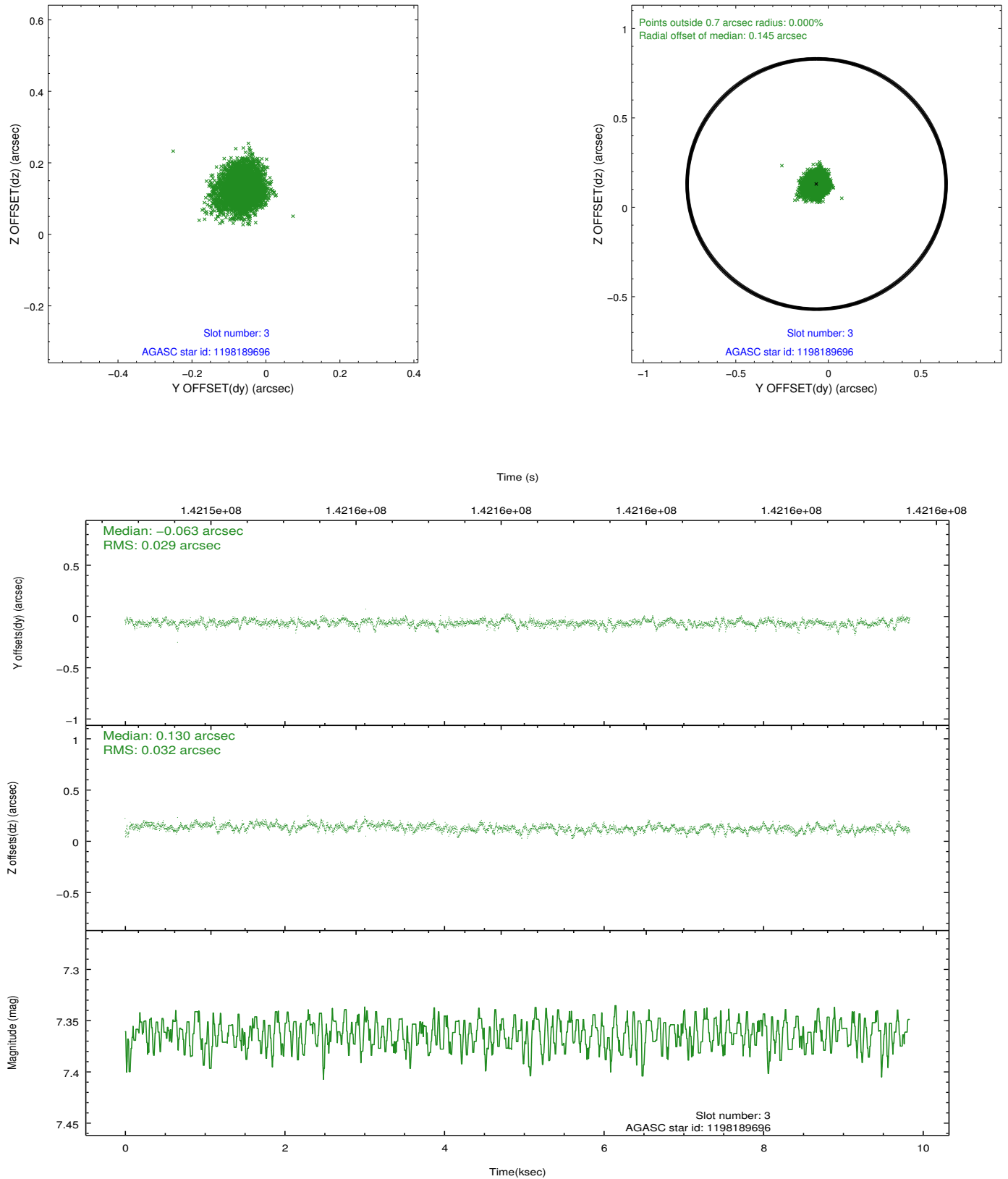


Slot Statistics

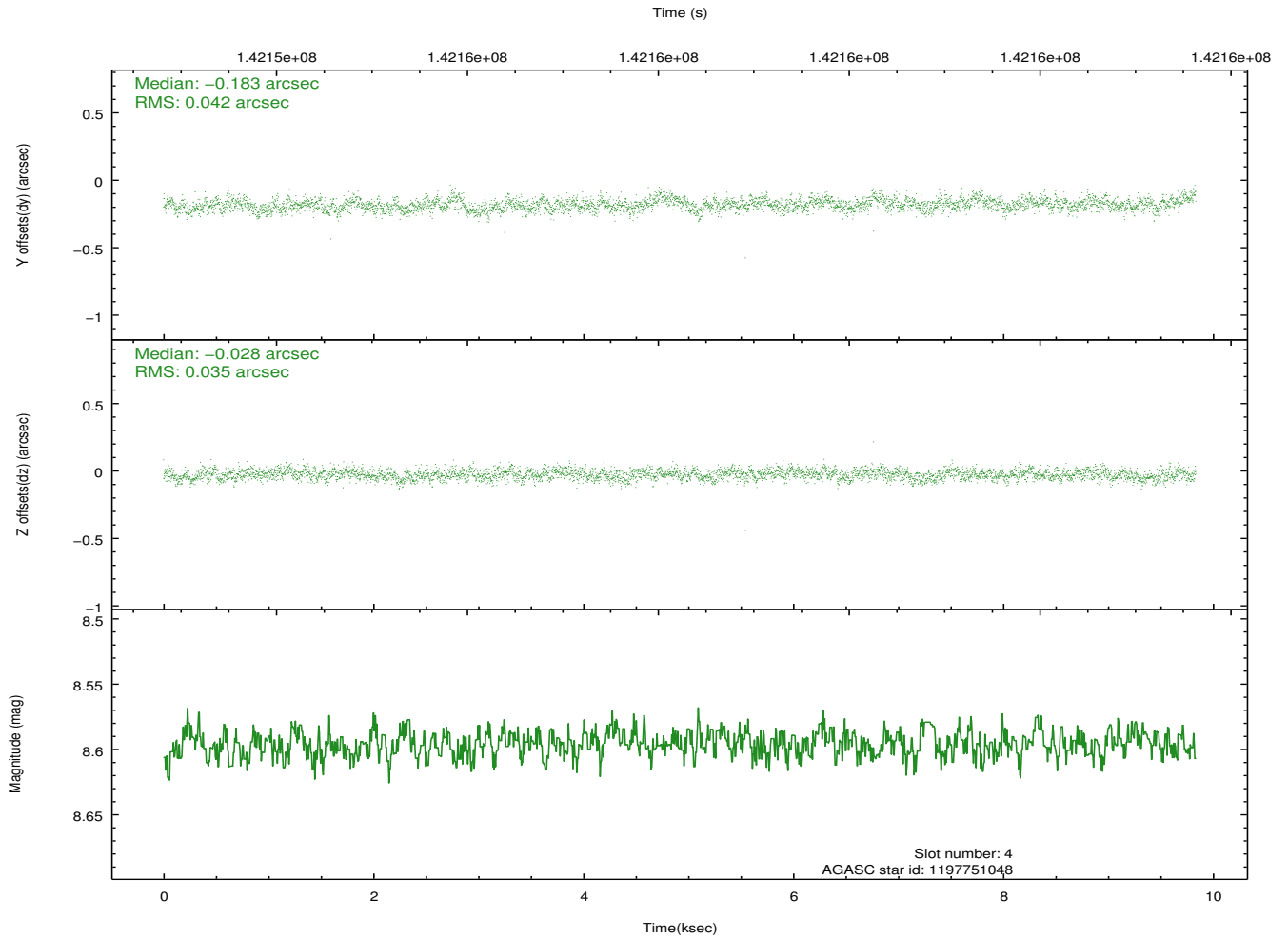
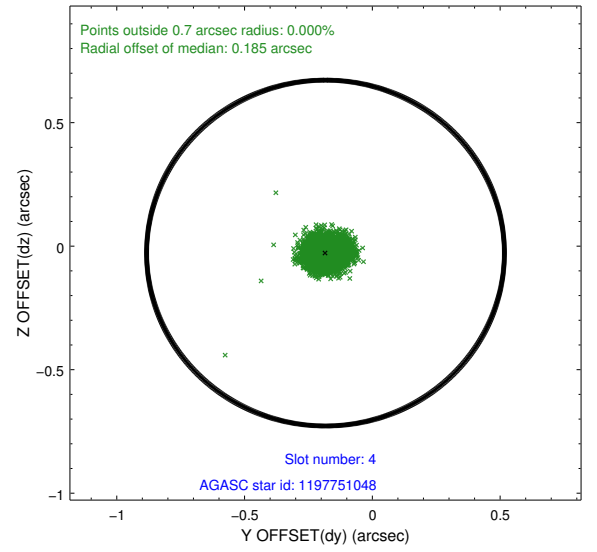
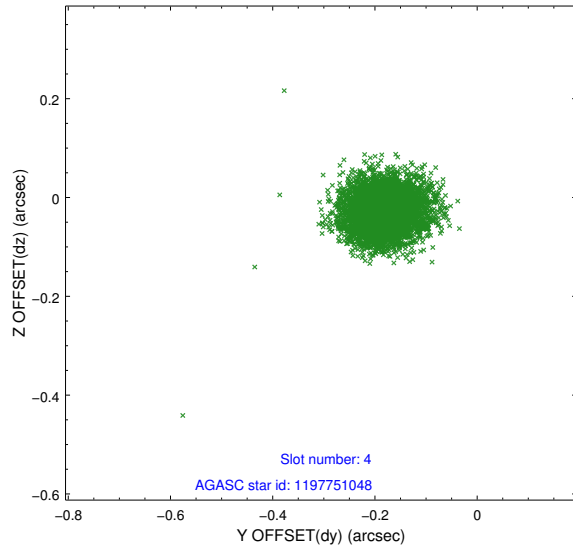
slot	status	id	mag	n_pts	med_dy	med_dz	dr1	dr2	ra	dec	mean_y	mean_z
0	FID	ACIS-I-1	7.25	2399	-0.002	0.013	0.013	0.021	0.000000	0.000000	938.11	-830.28
1	FID	ACIS-I-5	7.23	2397	-0.063	0.046	0.015	0.025	0.000000	0.000000	-1809.71	1067.03
2	FID	ACIS-I-6	7.26	2396	-0.029	0.010	0.012	0.019	0.000000	0.000000	403.09	1712.06
3	GUIDE	1198189696	7.36	4797	-0.063	0.130	0.045	0.077	15.223750	-72.697522	-186.41	-2024.25
4	GUIDE	1197751048	8.60	4798	-0.183	-0.028	0.057	0.092	12.451586	-72.130600	2244.53	685.11
5	GUIDE	1198192528	8.69	4796	0.052	-0.007	0.059	0.098	14.199975	-73.067922	-1341.04	-751.39
6	GUIDE	1198192088	9.24	4798	0.029	-0.185	0.100	0.155	11.250657	-73.229216	-1556.87	2372.71
7	GUIDE	1197740448	10.08	4791	0.165	0.093	0.130	0.211	11.121728	-72.248718	1970.93	2186.24

## 2.4 Star Slots

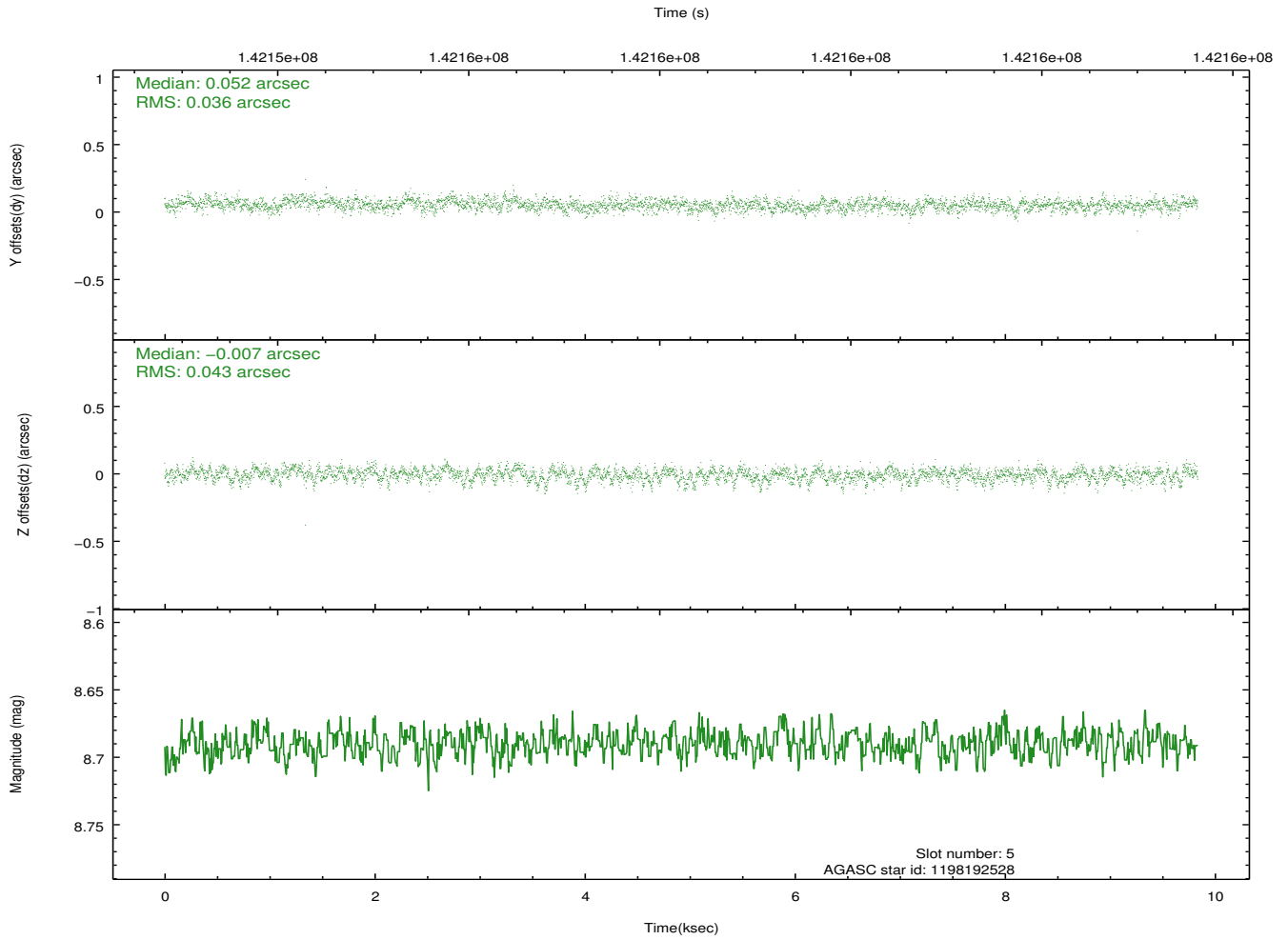
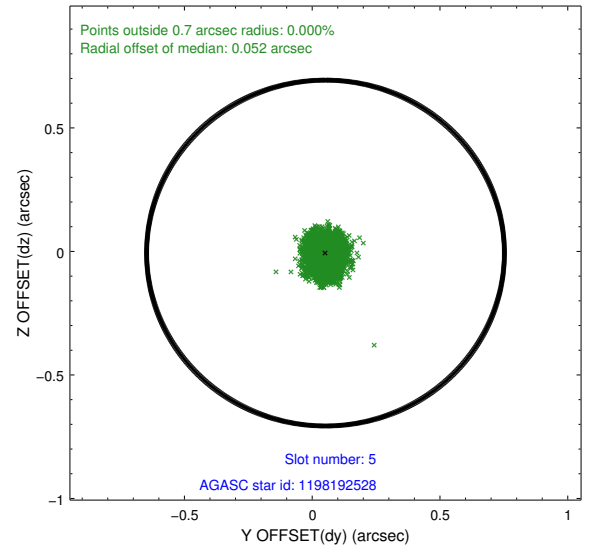
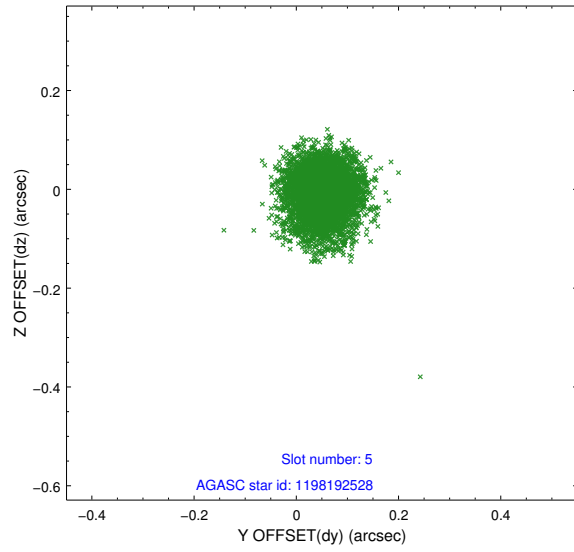
### 2.4.1 Slot 3



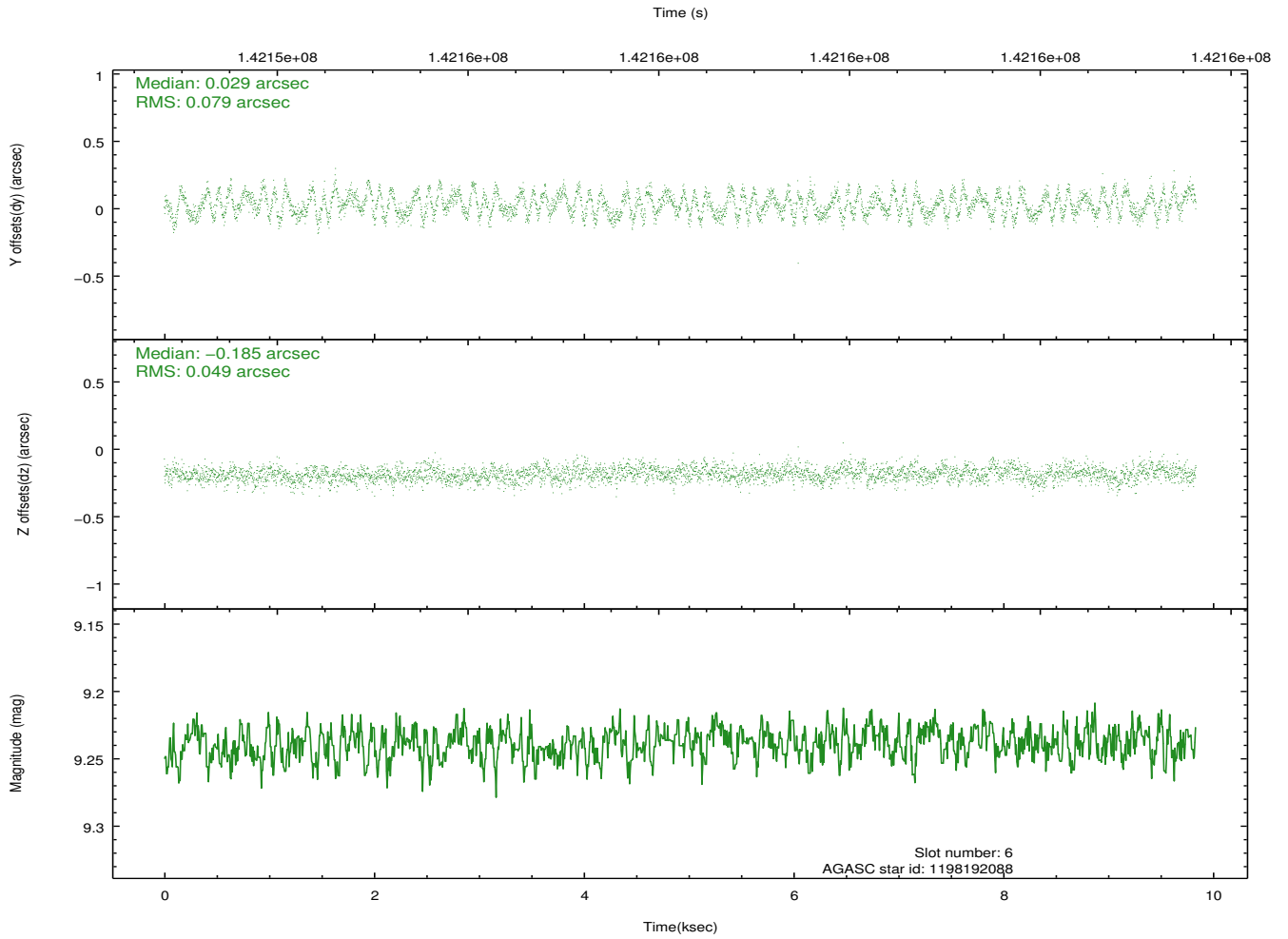
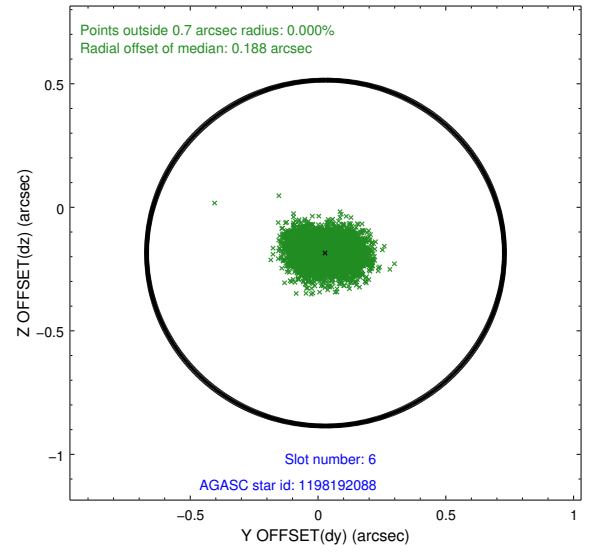
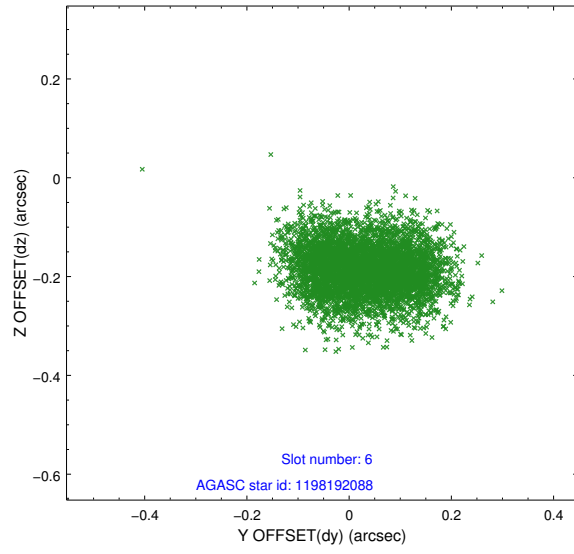
## 2.4.2 Slot 4



### 2.4.3 Slot 5

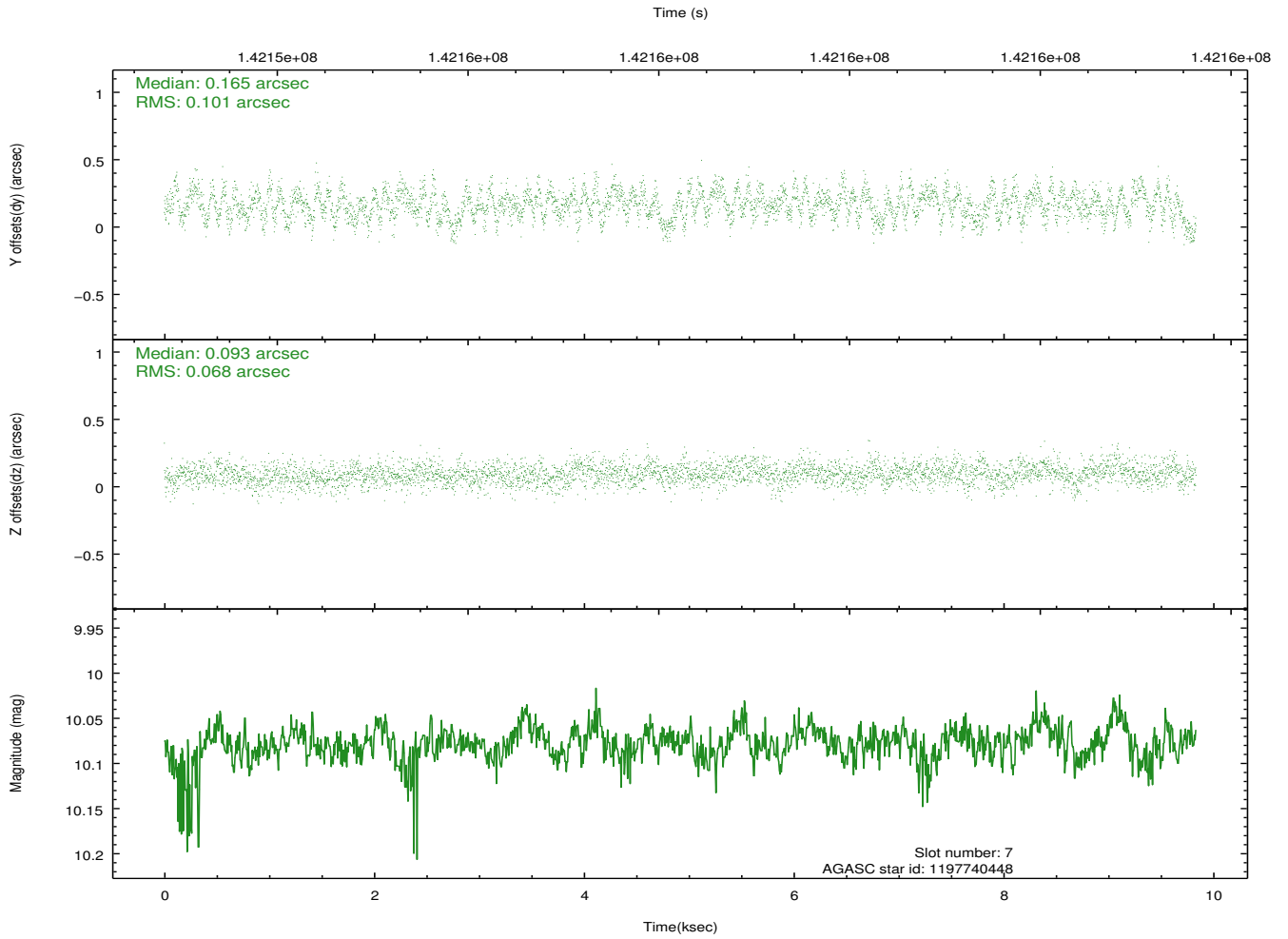
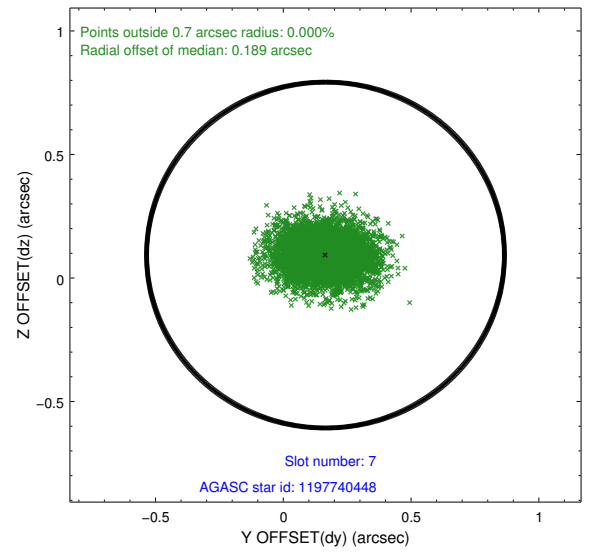
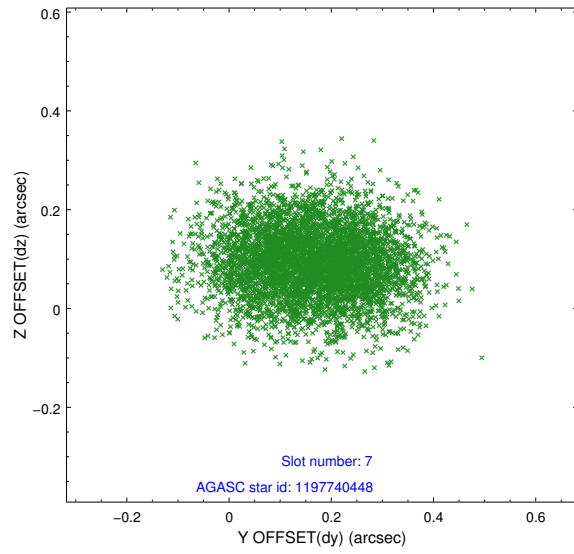


## 2.4.4 Slot 6



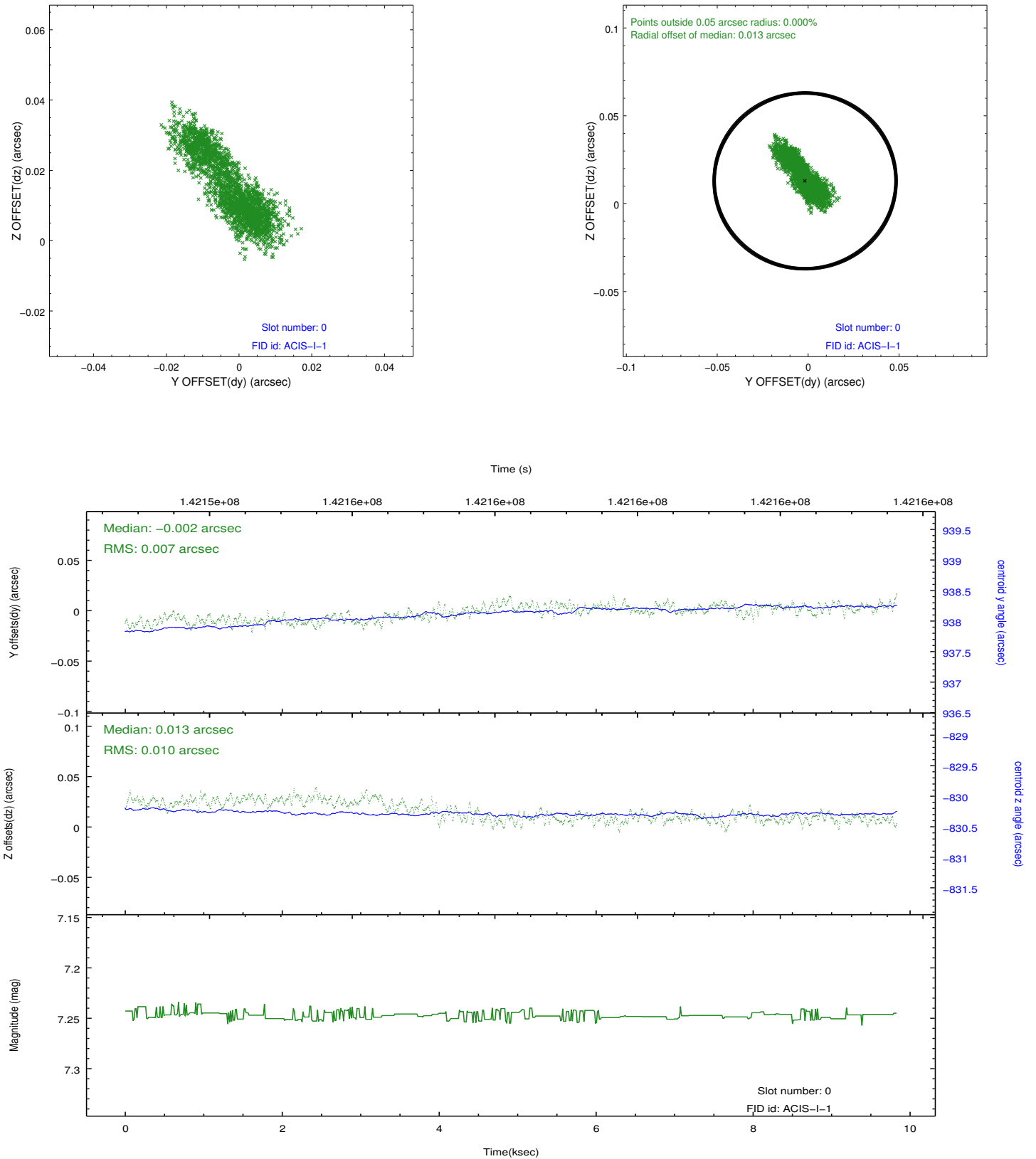


## 2.4.5 Slot 7

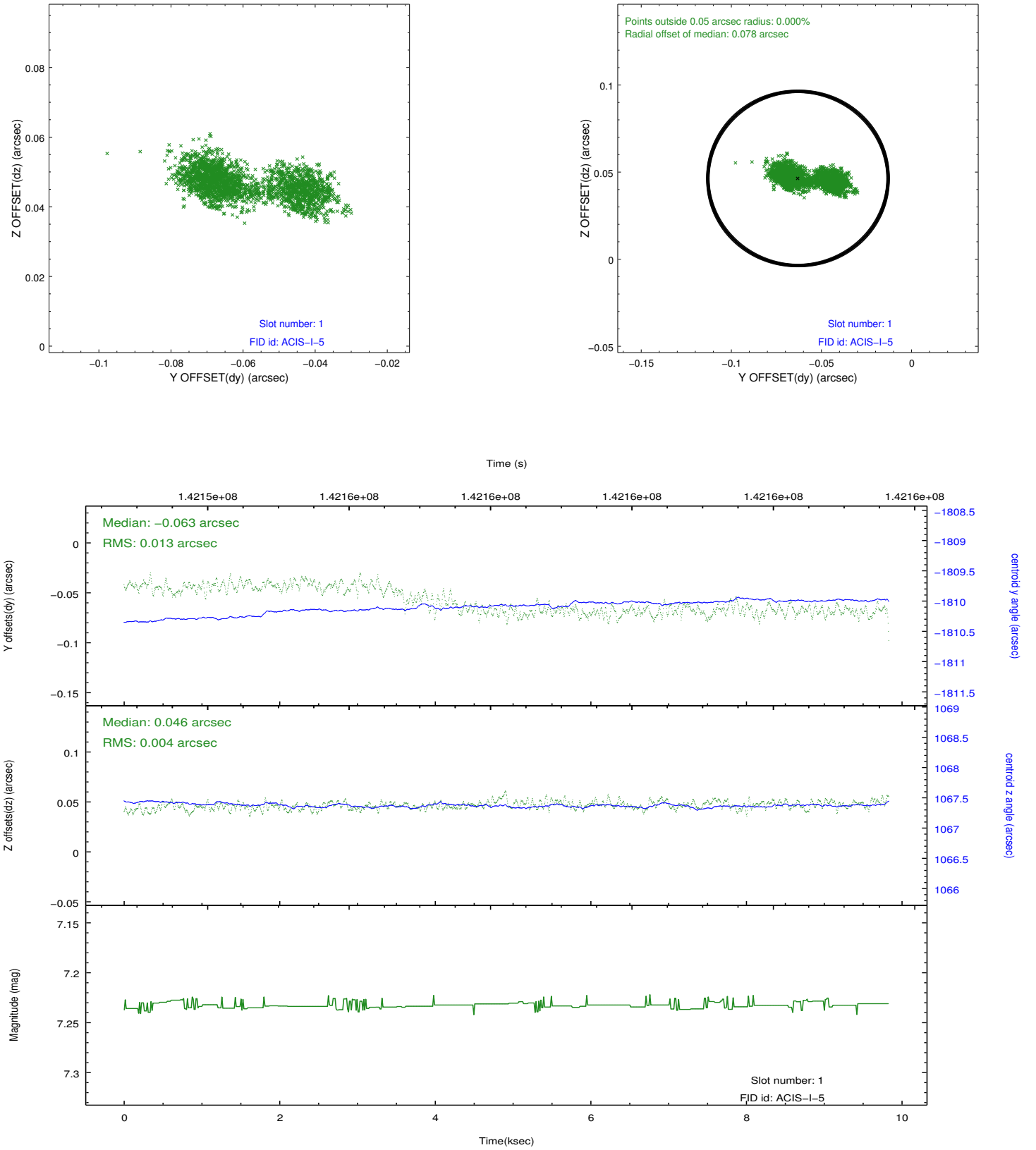


## 2.5 FID Slots

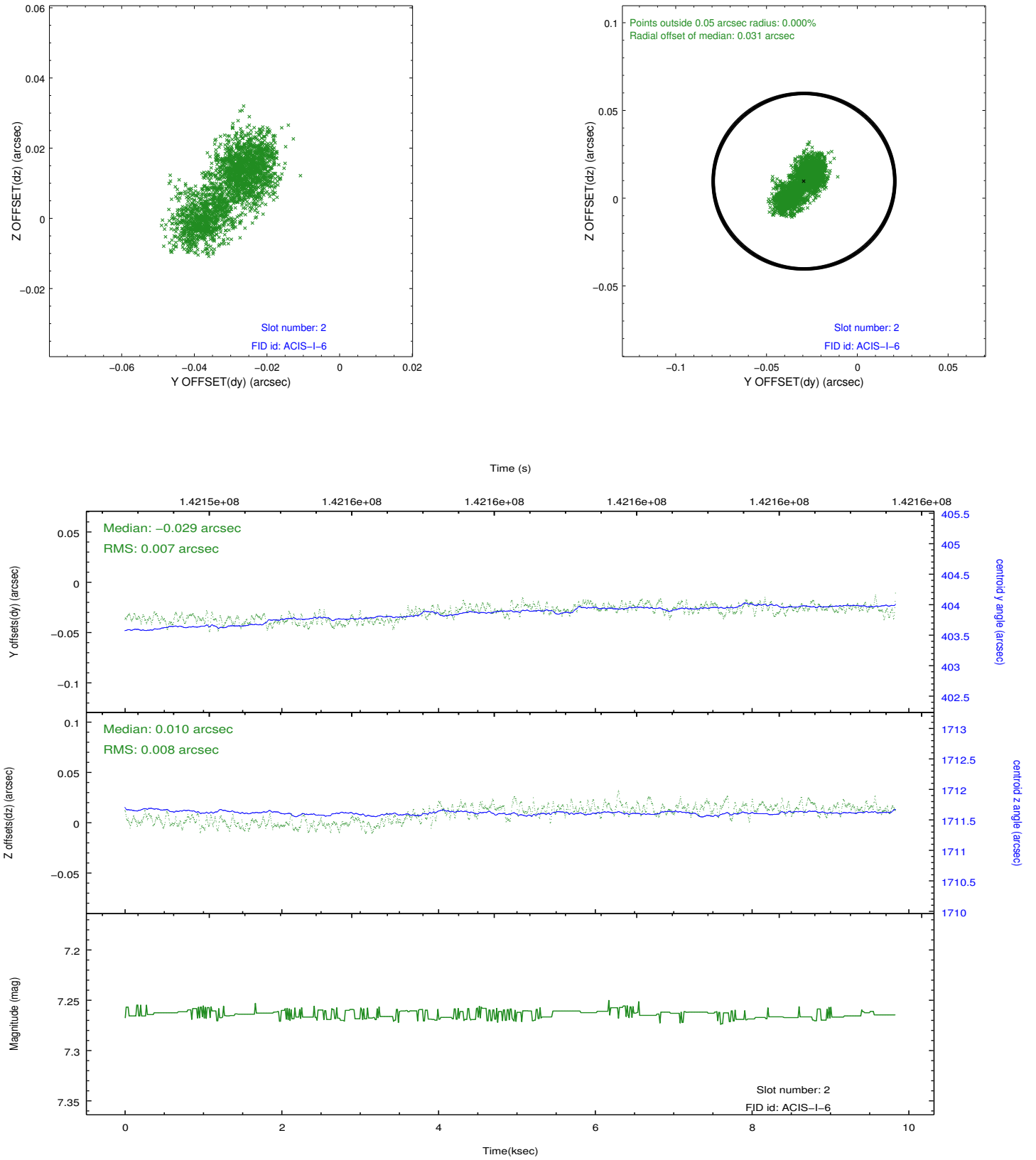
### 2.5.1 Slot 0



## 2.5.2 Slot 1



### 2.5.3 Slot 2



## A Summary

### A.1 Status

V&V Scientist	Beth Sundheim
V&V Date (YYYY-MM-DD)	2012.10.19
V&V Edition	1
V&V Disposition and Status	OK
V&V Charge Time	9.443

### A.2 Comments