

# V&V Reference Report

## L2 ASCDS Version : 7.6.9

Observation 2945 - L2 Version 001  
Chandra X-Ray Center

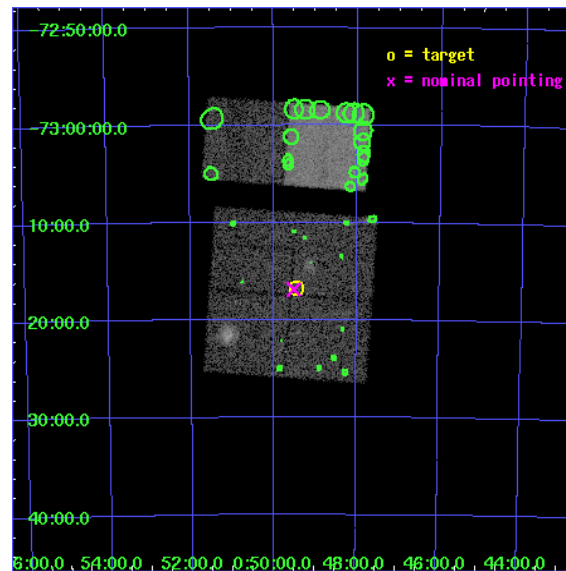
L2 Processing Date : Oct 7 2006

## Contents

<b>1</b>	<b>Front</b>	<b>2</b>
<b>2</b>	<b>OBI</b>	<b>3</b>
2.1	OBI . . . . .	3
2.1.1	Images . . . . .	3
2.1.2	Bias . . . . .	3
2.1.3	Parameters . . . . .	4
2.1.4	Events . . . . .	4
2.2	Compared Parameters . . . . .	5
2.3	Aspect . . . . .	6
2.4	Star Slots . . . . .	9
2.4.1	Slot 3 . . . . .	9
2.4.2	Slot 4 . . . . .	10
2.4.3	Slot 5 . . . . .	11
2.4.4	Slot 6 . . . . .	12
2.4.5	Slot 7 . . . . .	13
2.5	FID Slots . . . . .	14
2.5.1	Slot 0 . . . . .	14
2.5.2	Slot 1 . . . . .	15
<b>3</b>	<b>Point Sources</b>	<b>16</b>
<b>A</b>	<b>Summary</b>	<b>17</b>
A.1	Status . . . . .	17
A.2	Comments . . . . .	17

# 1 Front

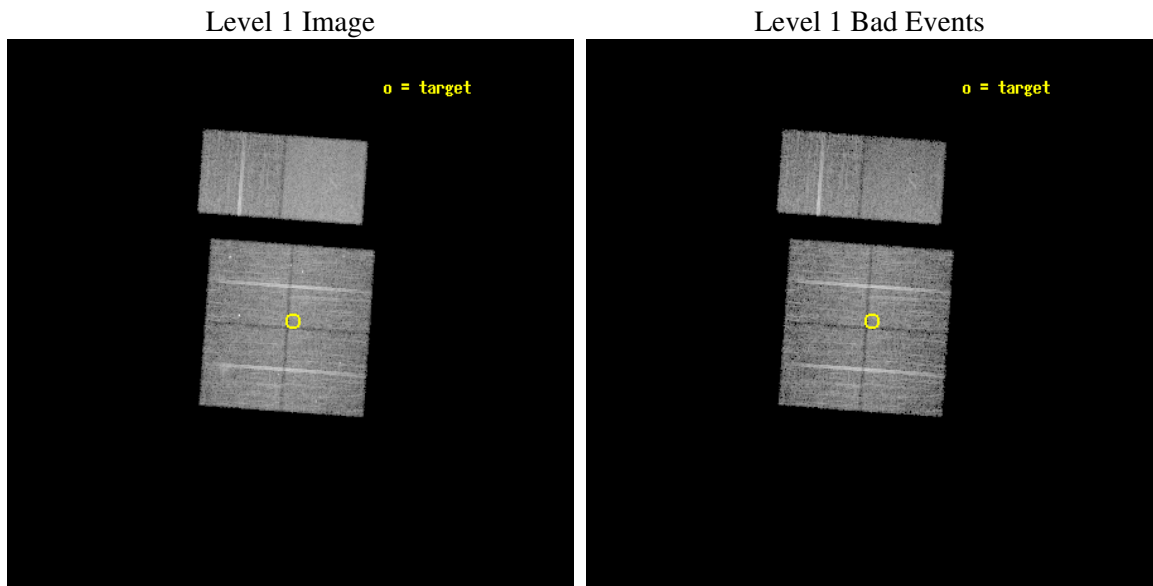
seq_num	600282
obs_id	2945
title	A CHANDRA SURVEY OF THE SMC
observer	Dr. Andreas Zezas
object	SMC FIELD 4
dtcycle	0
cycle	P
ra_targ	12.362917
dec_targ	-73.279722
ra_nom	12.37809409972
dec_nom	-73.281205275517
roll_nom	4.1234895917658
revision	3
ontime	11753.599956214
livetime	11604.768796401
ontime0	11753.599956214
ontime1	11753.599956214
ontime2	11753.599956214
ontime3	11753.599956214
ontime6	11753.599956214
ontime7	11753.599956214
l2events	79305



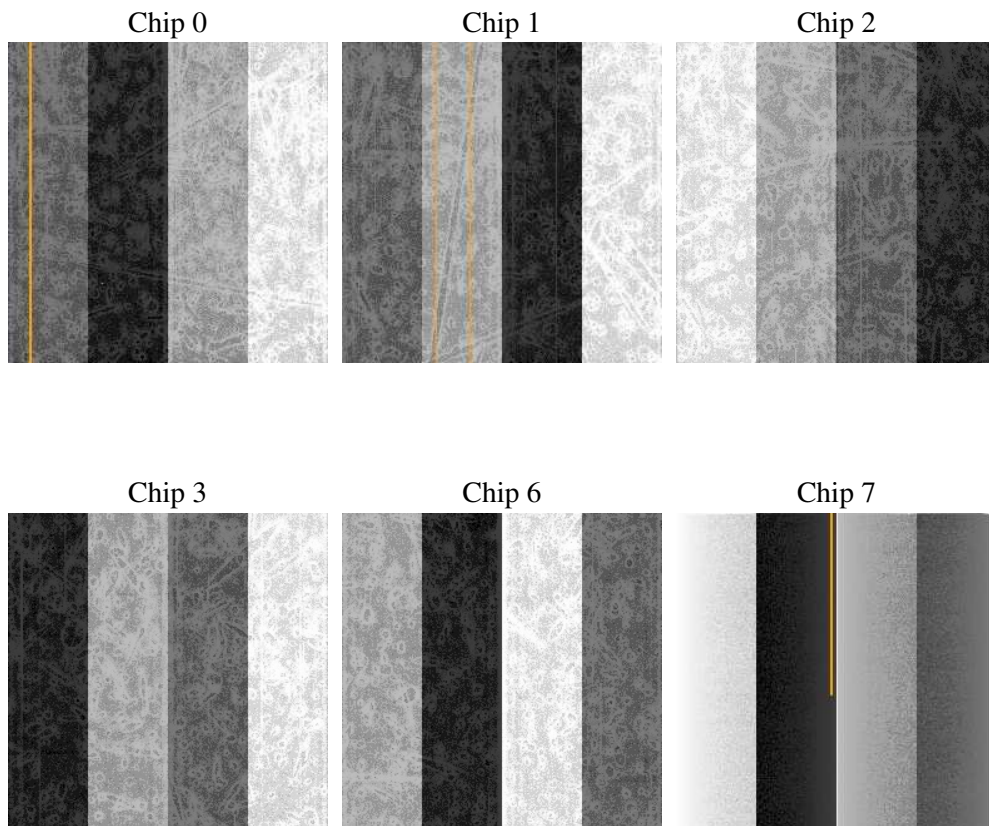
## 2 OBI

### 2.1 OBI

#### 2.1.1 Images



#### 2.1.2 Bias



### 2.1.3 Parameters

obi_num	0
ascdsver	7.6.9
caldbver	3.2.3
date	2006-10-07T16:44:21
revision	3

sched_exp_time	12000.000000
ontime	11758.350436777
ontime0	11758.350436777
ontime1	11758.350436777
ontime2	11758.350436777
ontime3	11758.350436777
ontime6	11758.350436777
ontime7	11758.350456685
l1events	465659

### 2.1.4 Events

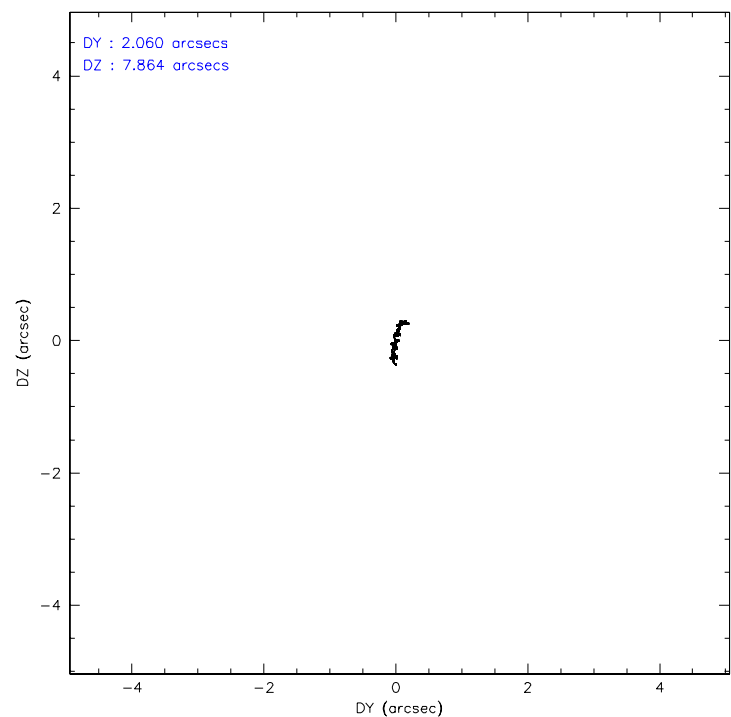
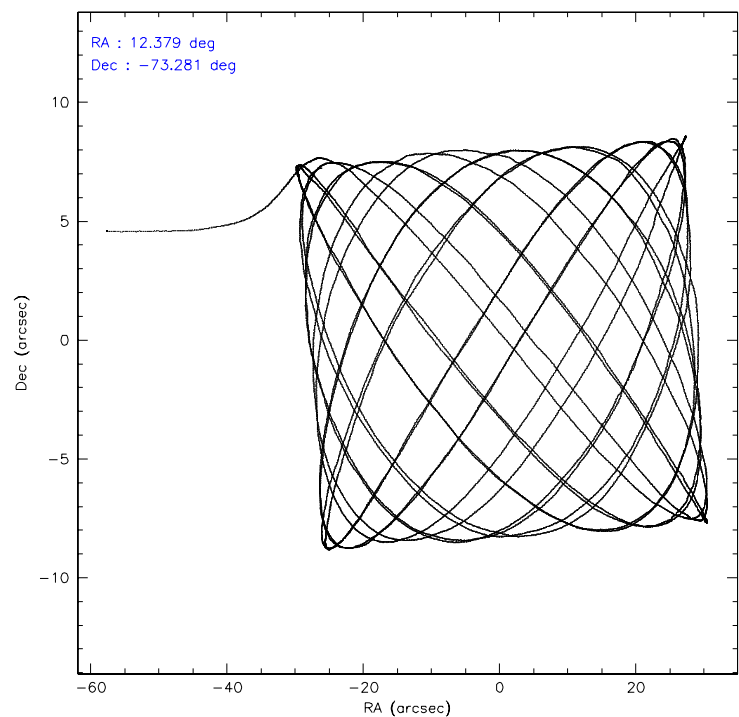
	ccd 0	ccd 1	ccd 2	ccd 3	ccd 6	ccd 7
level 1 events	71033	69762	74488	75138	76095	99143
rejected events	60121	59928	65055	65607	67218	61279
rejected %	84%	85%	87%	87%	88%	61%

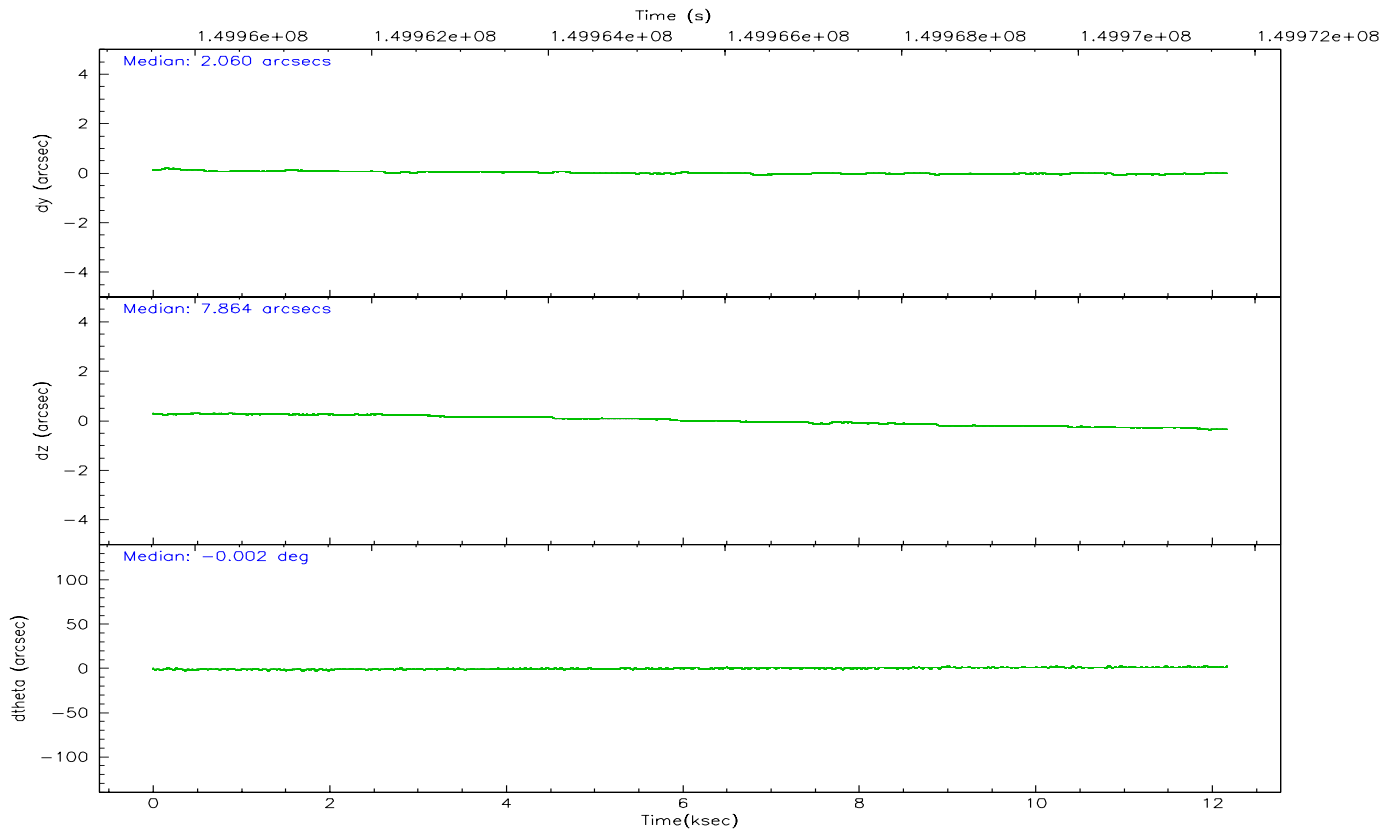
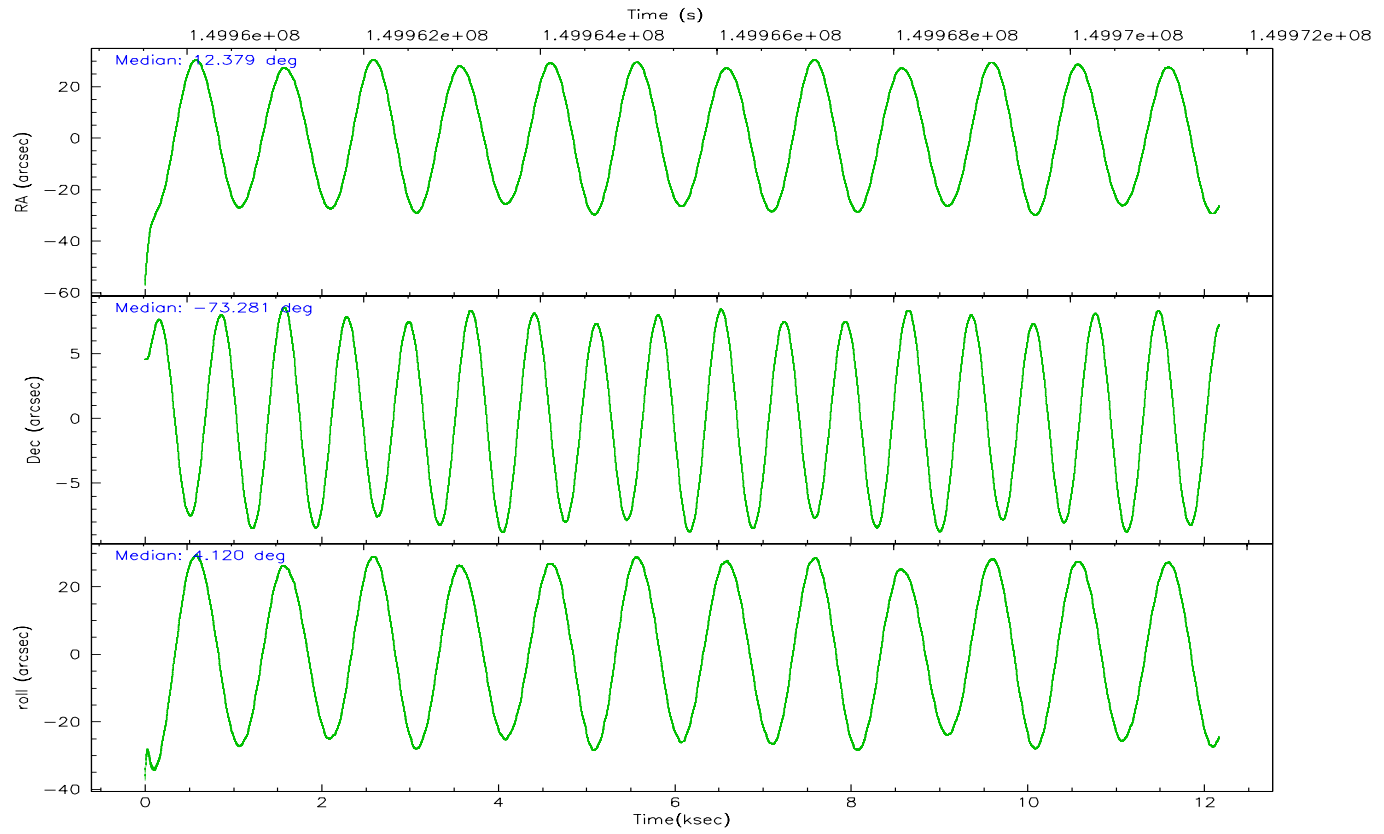
	ccd 0	ccd 1	ccd 2	ccd 3	ccd 6	ccd 7
grade 0 events	5580	4170	4595	4566	3560	2160
	7%	5%	6%	6%	4%	2%
grade 1 events	43	48	47	36	33	62
	0%	0%	0%	0%	0%	0%
grade 2 events	1958	1992	1729	1768	1810	9267
	2%	2%	2%	2%	2%	9%
grade 3 events	948	989	873	862	857	1979
	1%	1%	1%	1%	1%	1%
grade 4 events	845	932	861	863	873	1745
	1%	1%	1%	1%	1%	1%
grade 5 events	2885	3052	2862	3194	3510	6283
	4%	4%	3%	4%	4%	6%
grade 6 events	1584	1752	1375	1476	1780	22724
	2%	2%	1%	1%	2%	22%
grade 7 events	57190	56827	62146	62373	63672	54923
	80%	81%	83%	83%	83%	55%

## 2.2 Compared Parameters

Parameter	Planned	Actual	Parameter	Planned	Actual
Instrument	ACIS	ACIS	Obspar format version number	6	6
Detector	ACIS-012367	ACIS-012367	Obspar file type	PREDICTED	ACTUAL
Grating	NONE	NONE	Obspar update status	NONE	UPDATED
Data mode	FAINT	FAINT	Number of optional ACIS chips dropped	0	0
Observation mode	POINTING	POINTING	On-chip summing requested	N	N
Pointing RA	12.299527	12.37809409972035	Subarray requested	NONE	NONE
Pointing Dec	-73.296676	-73.28120527551675	Alternating exposures requested	N	N
Pointing Roll	3.839529	4.123489591765832	Primary exposure time	0.000000	3.2
SIM focus pos (mm)	-0.782348	-0.7809083437167272			
SIM defocus (mm)	0	0.001439871863259334			
SIM translation stage pos (mm)	-233.592463	-233.5874344608287			
SIM translation stage offset (mm)	0	-0.005018542100998502			
Observation start time	149959688.184000	149958814.40485			
Observation start date	2002-10-02T15:27:04	2002-10-02T15:13:34			
Observation end time	149971688.184000	149971870.85539			
Observation end date	2002-10-02T18:47:04	2002-10-02T18:51:10			
Read mode	TIMED	TIMED			

2.3 Aspect





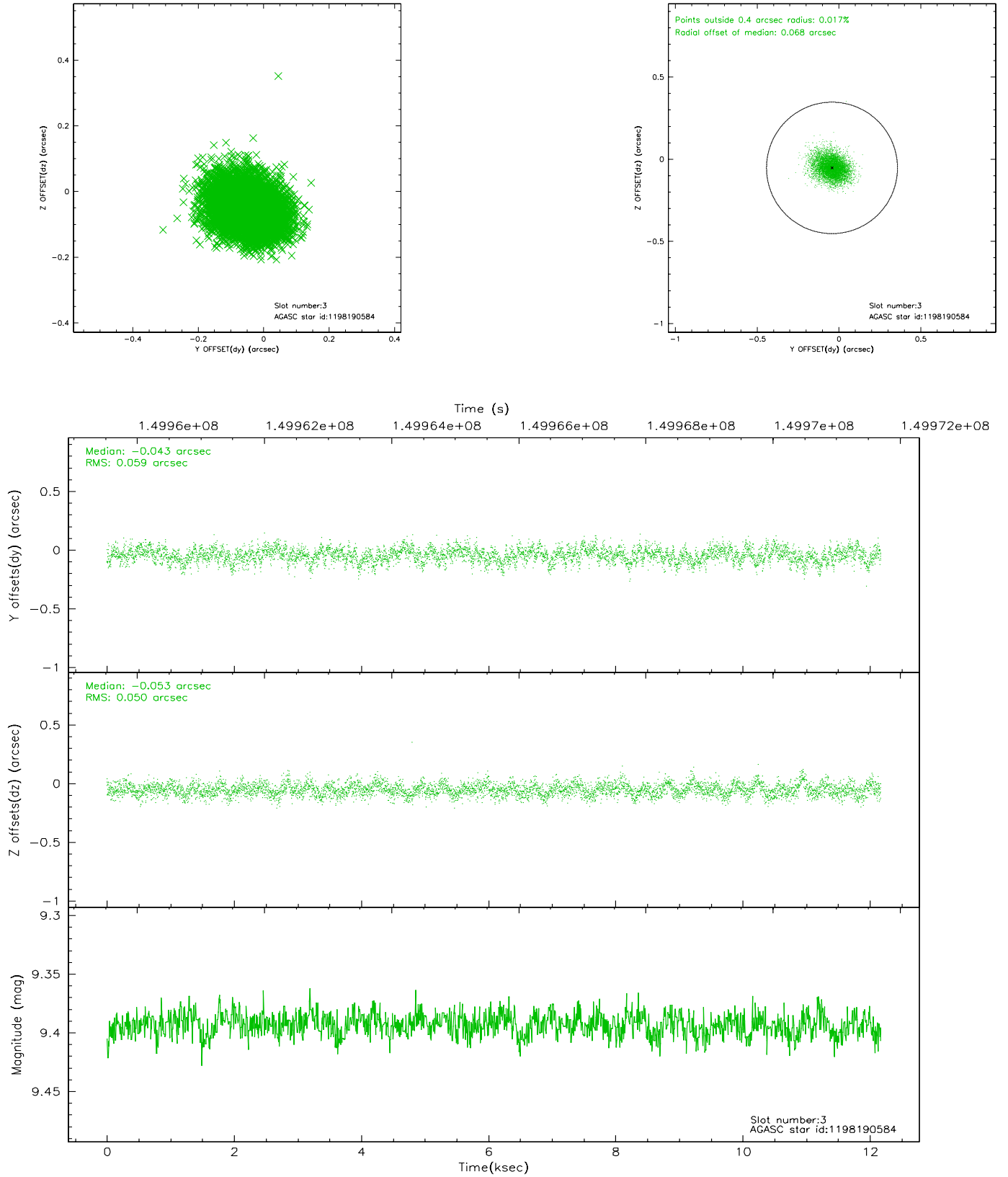
### Slot Statistics

slot	status	id	mag	n_pts	med_dy	med_dz	dr1	dr2	ra	dec	mean_y	mean_z
0	FID	ACIS-I-1	7.25	2969	-0.051	0.039	0.008	0.014	0.000000	0.000000	937.69	-831.26
1	FID	ACIS-I-5	7.24	2969	-0.010	0.011	0.008	0.014	0.000000	0.000000	-1810.14	1066.01
2	OMITTED		0.00	0	0.000	0.000	0.000	0.000	0.000000	0.000000	0.00	0.00
3	GUIDE	1198190584	9.39	5936	-0.043	-0.053	0.081	0.135	13.276396	-73.109281	1063.45	596.69
4	GUIDE	1198192528	8.70	5936	0.151	0.018	0.058	0.095	14.199975	-73.067922	2040.53	657.28
5	GUIDE	1198179952	8.73	5937	-0.032	0.021	0.069	0.109	10.482470	-73.680681	-1928.25	-1283.90
6	GUIDE	1198190664	9.26	5933	-0.008	0.066	0.088	0.154	14.057016	-73.825958	1628.38	-2044.90
7	GUIDE	1198192088	9.22	5933	-0.070	-0.050	0.068	0.113	11.250657	-73.229216	-1071.73	305.53

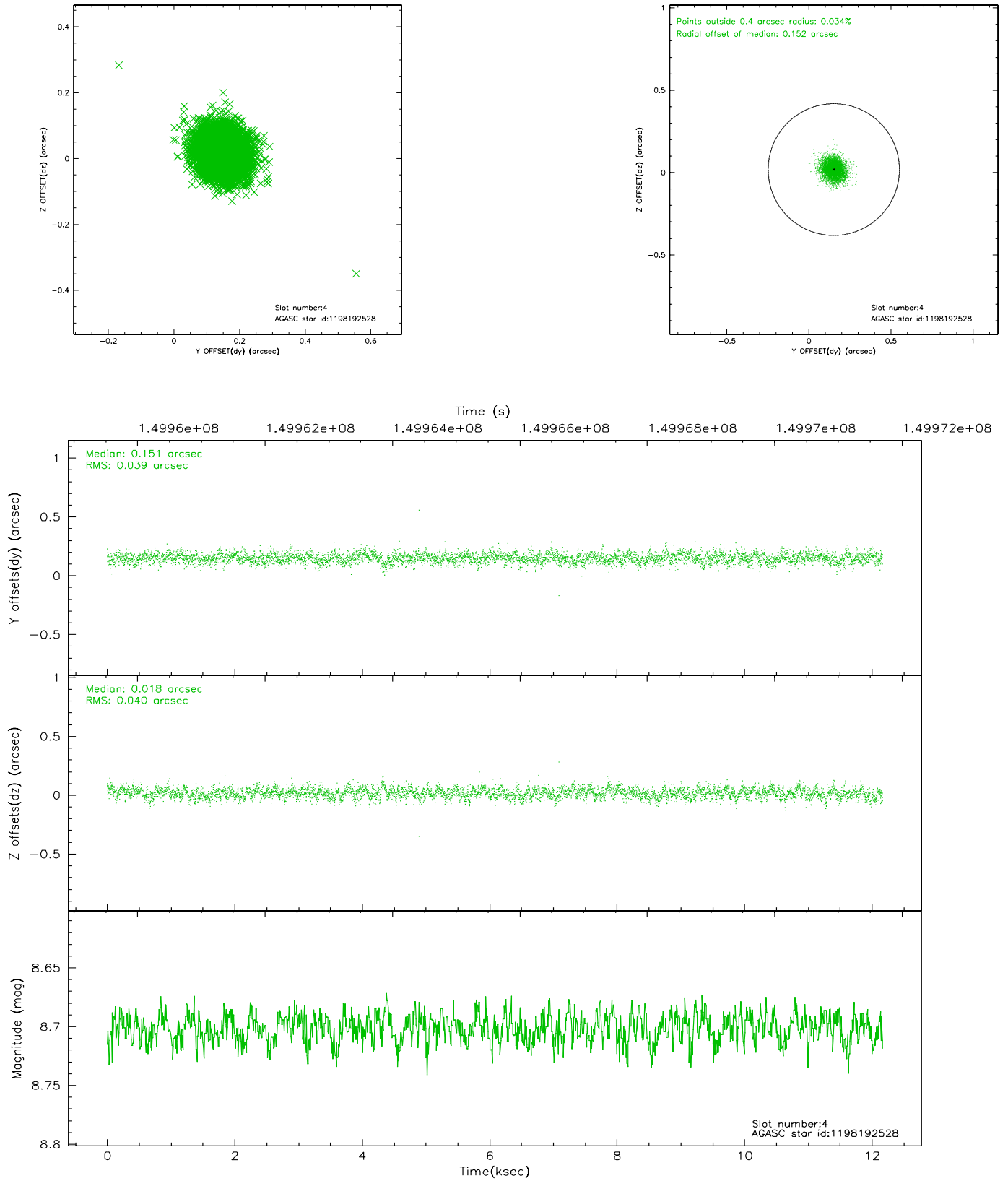


## 2.4 Star Slots

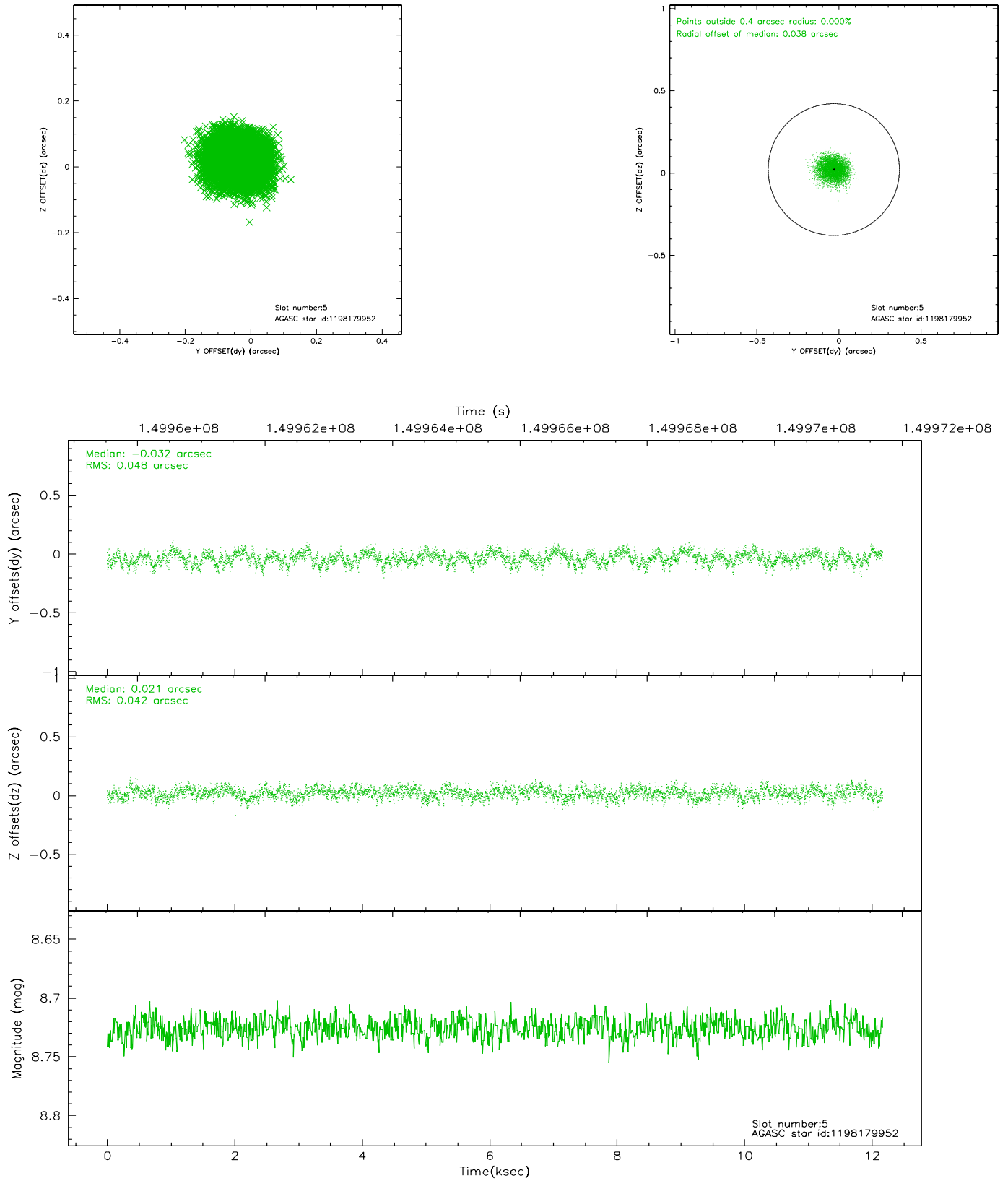
### 2.4.1 Slot 3



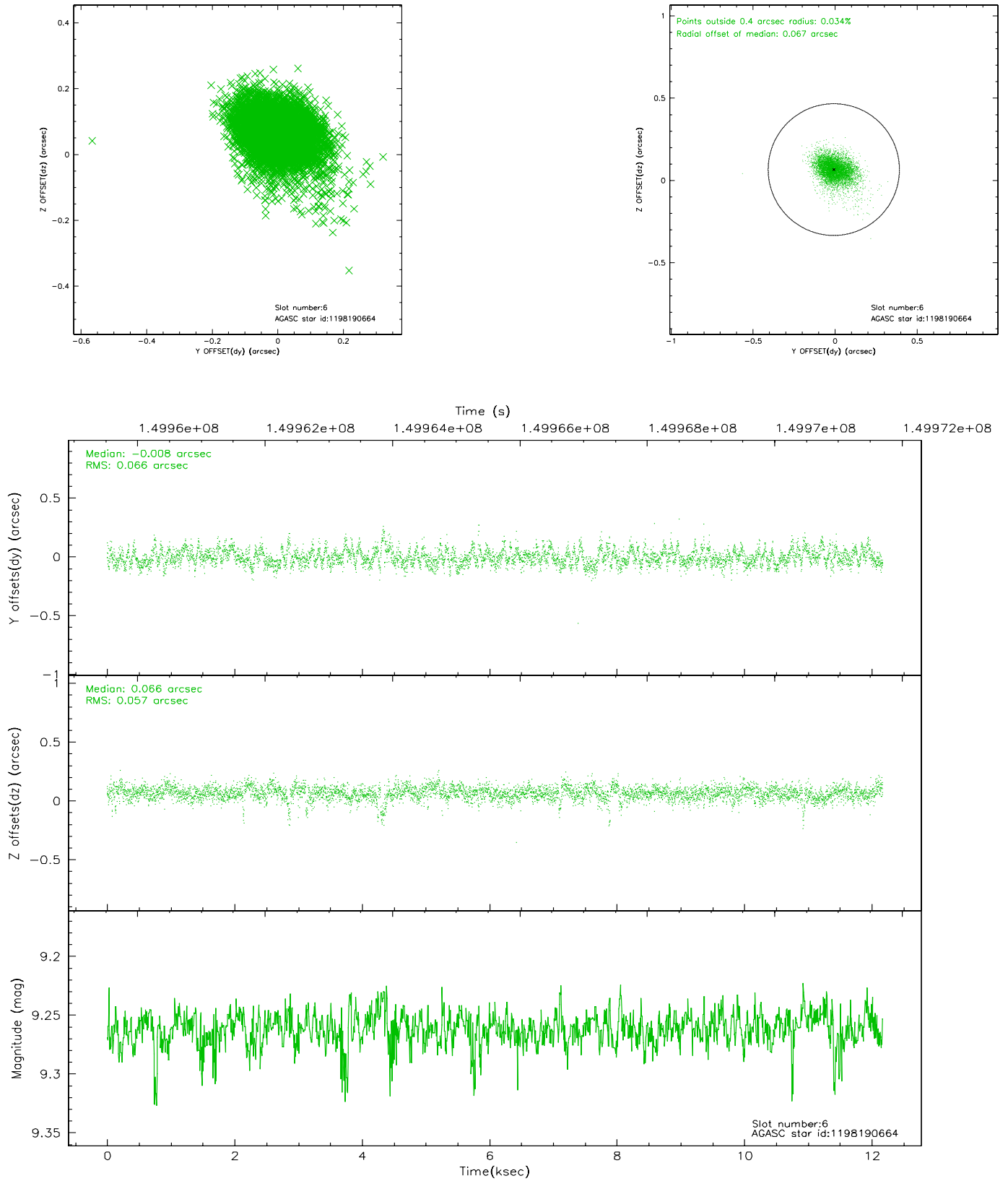
## 2.4.2 Slot 4



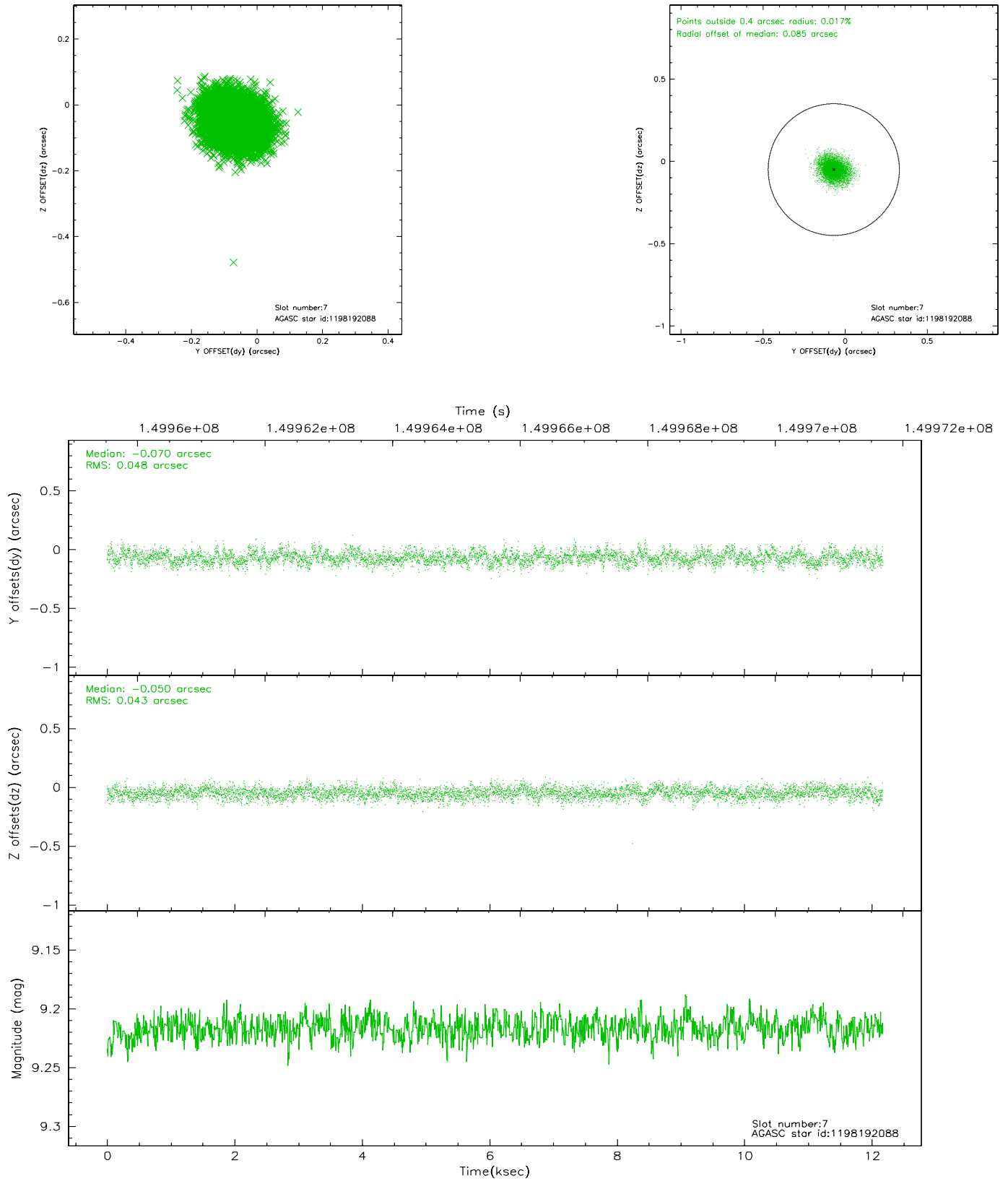
### 2.4.3 Slot 5



## 2.4.4 Slot 6

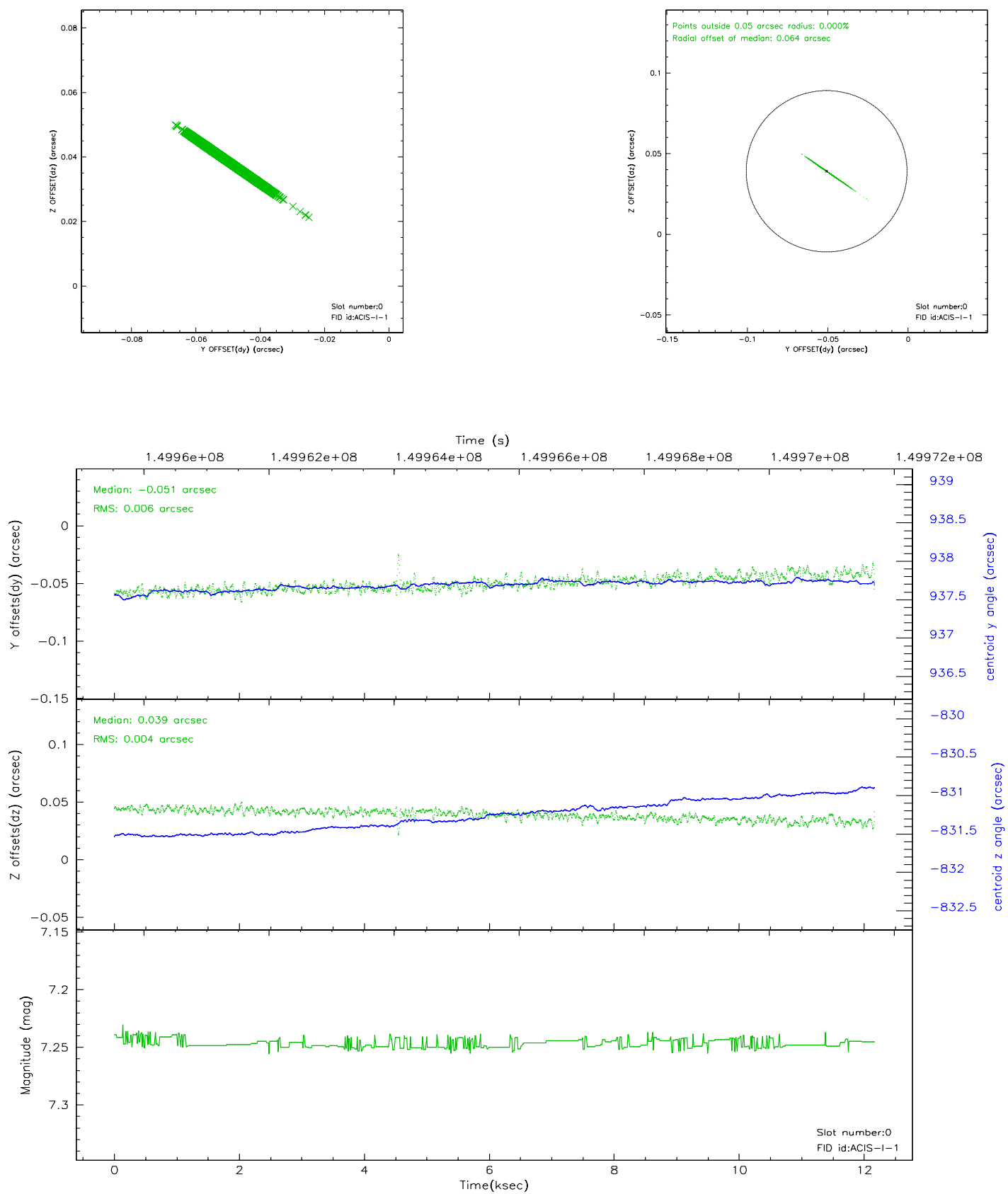


## 2.4.5 Slot 7

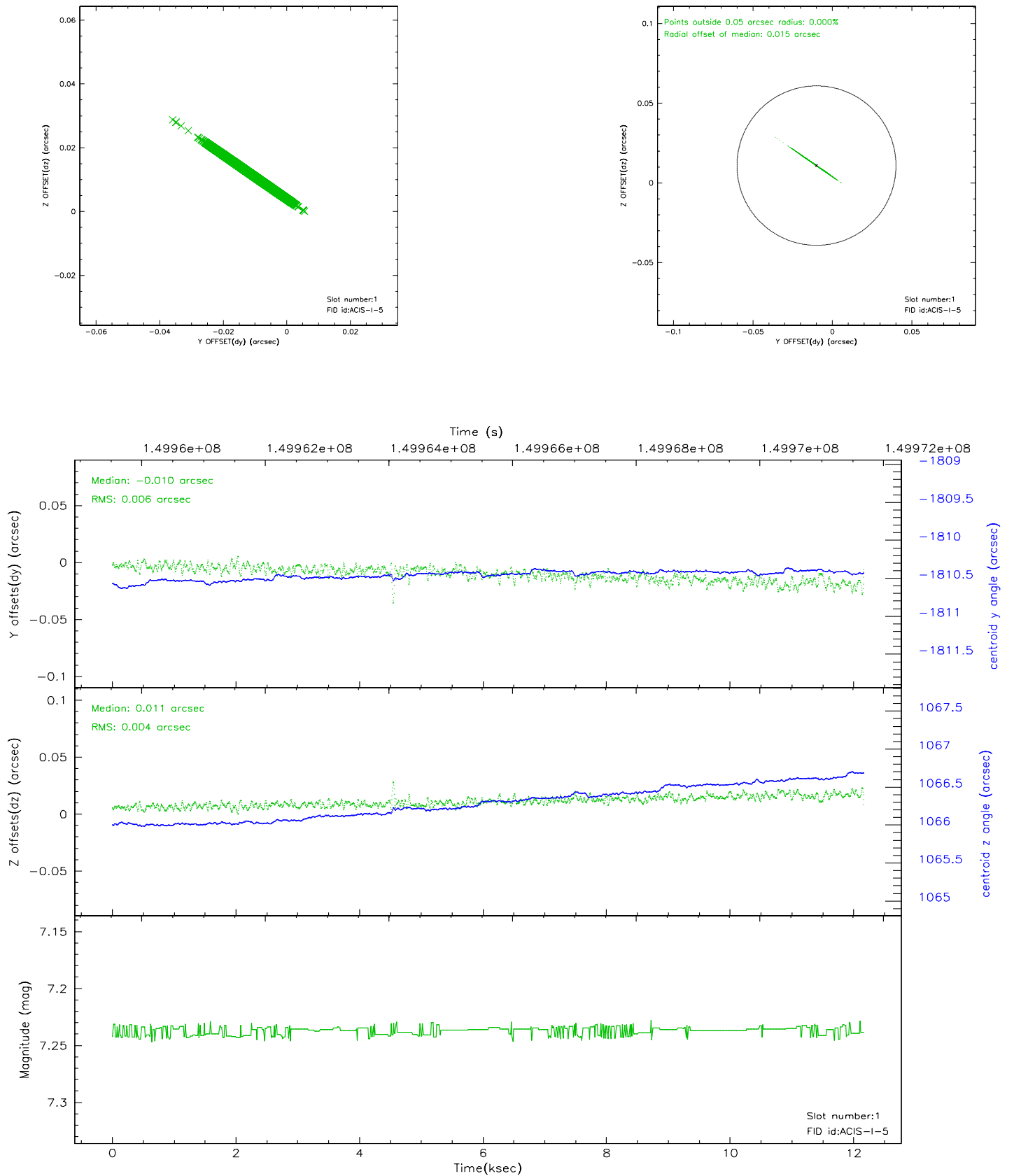


## 2.5 FID Slots

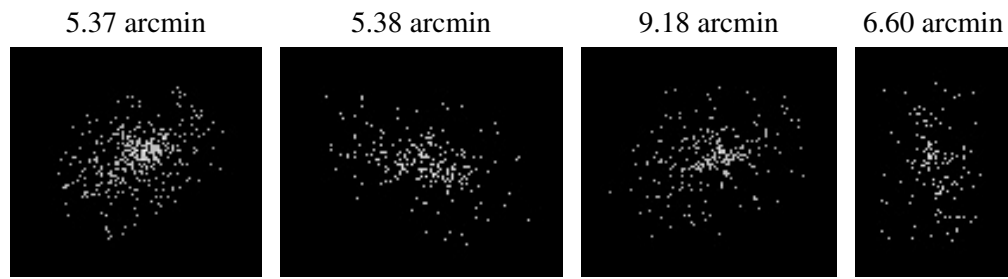
### 2.5.1 Slot 0



## 2.5.2 Slot 1



### 3 Point Sources





# A Summary

## A.1 Status

V&V Scientist	Jen Lauer
V&V Date (YYYY-MM-DD)	2010.10.01
V&V Edition	2
V&V Disposition and Status	OK
V&V Charge Time	11.753

## A.2 Comments

The fid light in slot 2 was manually excluded from the processing due to poor data quality.