

V&V Reference Report

L2 ASCDS Version : 7.6.9

Observation 2933 - L2 Version 001
Chandra X-Ray Center

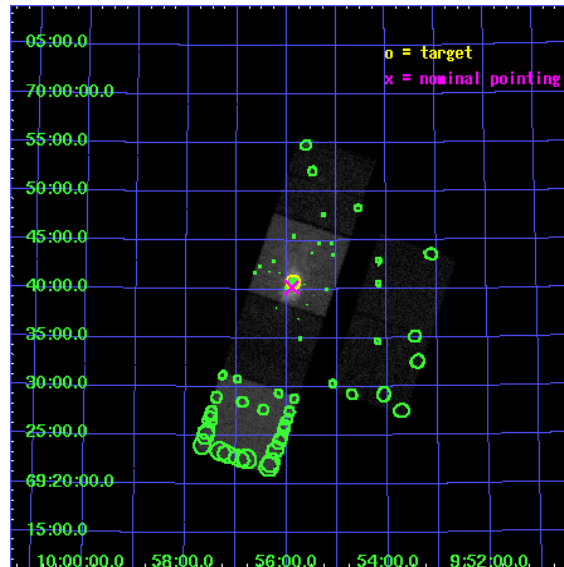
L2 Processing Date : Sep 19 2006

Contents

1	Front	2
2	OBI	3
2.1	OBI	3
2.1.1	Images	3
2.1.2	Bias	3
2.1.3	Parameters	4
2.1.4	Events	4
2.2	Compared Parameters	5
2.3	Aspect	6
2.4	Star Slots	9
2.4.1	Slot 3	9
2.4.2	Slot 4	10
2.4.3	Slot 5	11
2.4.4	Slot 6	12
2.4.5	Slot 7	13
2.5	FID Slots	14
2.5.1	Slot 0	14
2.5.2	Slot 1	15
2.5.3	Slot 2	16
3	Point Sources	17
A	Summary	18
A.1	Status	18
A.2	Comments	18

1 Front

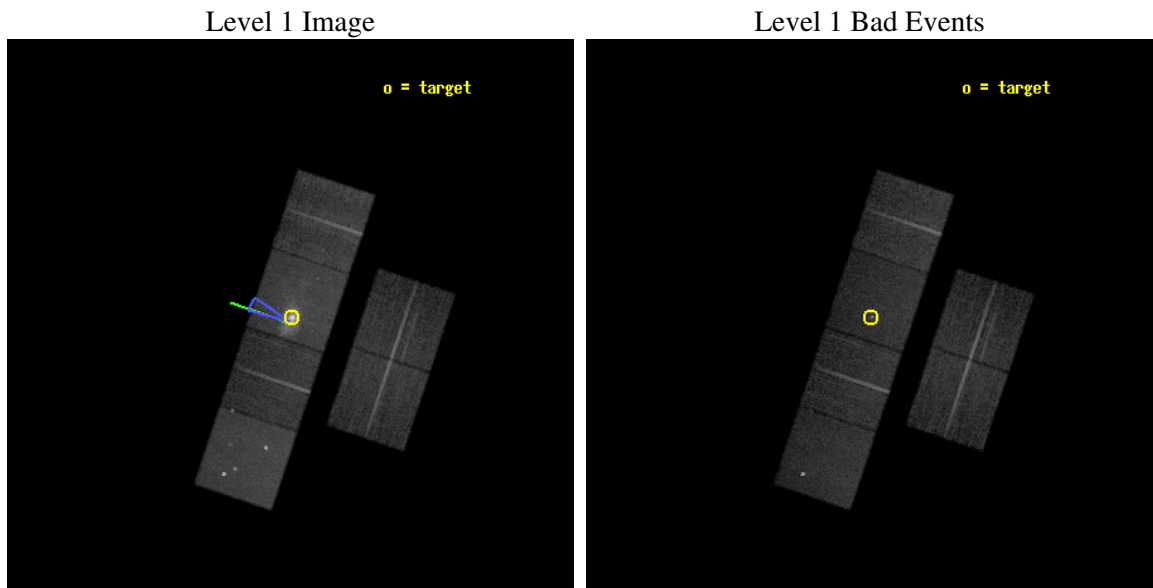
seq_num	600270
obs_id	2933
title	RESOLVING THE ORIGIN OF X-RAY EMISSION IN A COMPLETE SAMPLE OF LOCAL STARBURST-DRIVEN SUPERWINDS
observer	Dr David Strickland
object	M82
dtcycle	0
cycle	P
ra_targ	148.969167
dec_targ	69.67975
ra_nom	148.97323705132
dec_nom	69.670179073122
roll_nom	288.44914711744
revision	2
ontime	18255.999931991
livetime	18024.831468409
ontime2	18255.999931991
ontime3	18255.999931991
ontime5	18255.999931991
ontime6	18255.999931991
ontime7	18255.999931991
ontime8	18252.758961737
l2events	251834



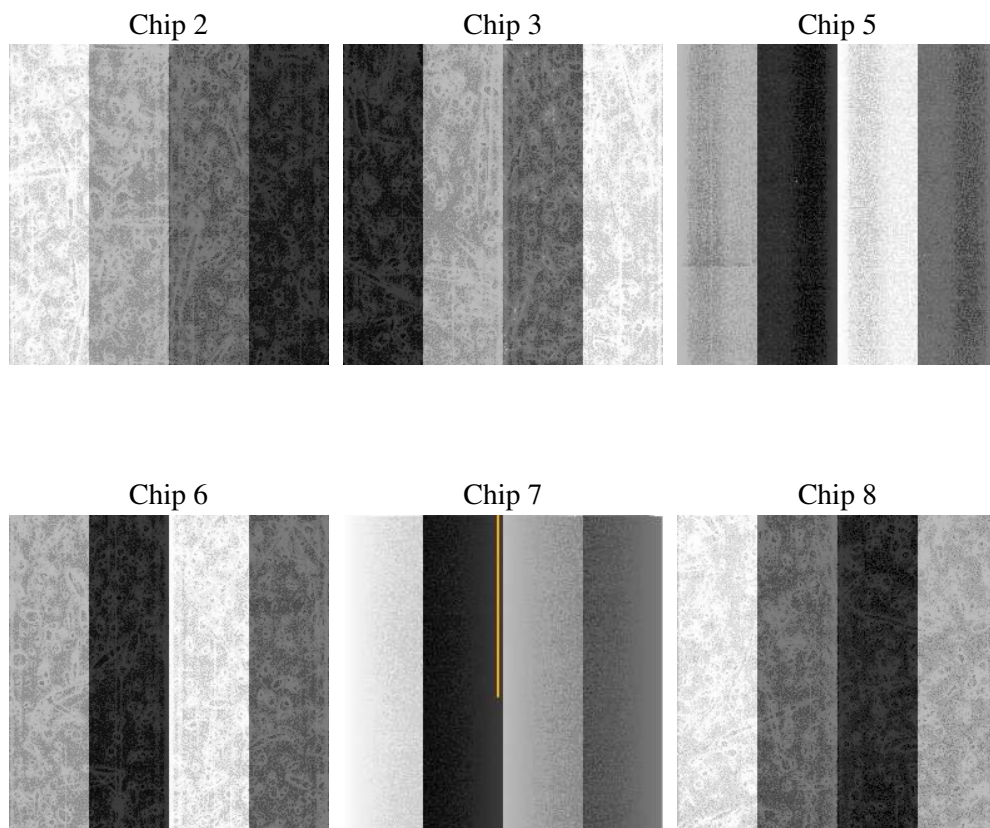
2 OBI

2.1 OBI

2.1.1 Images



2.1.2 Bias



2.1.3 Parameters

obi_num	0
ascdsver	7.6.9
caldsver	3.2.3
date	2006-09-19T18:27:00
revision	2

sched_exp_time	18500.000000
ontime	18259.788957119
ontime2	18259.788927227
ontime3	18259.788907349
ontime5	18259.788927227
ontime6	18259.788927227
ontime7	18259.788957119
ontime8	18256.547837406
l1events	908006

2.1.4 Events

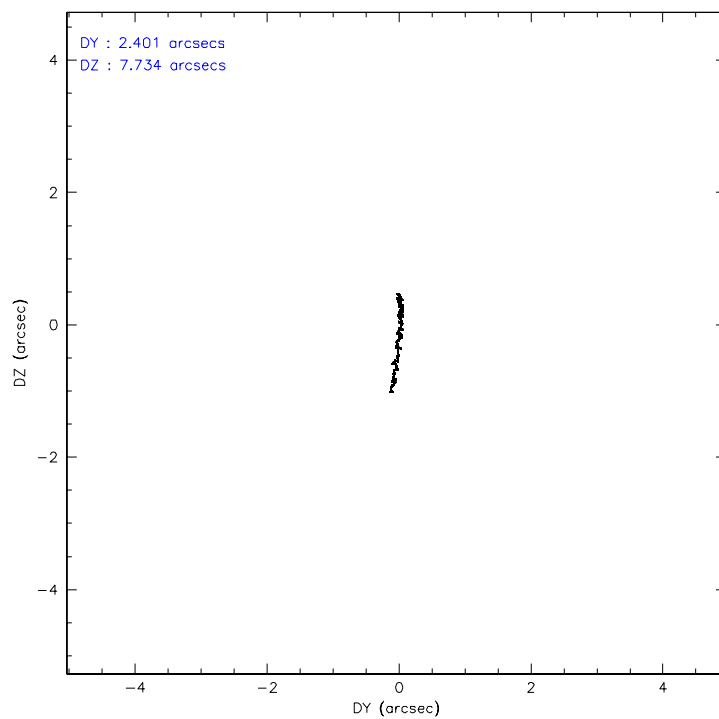
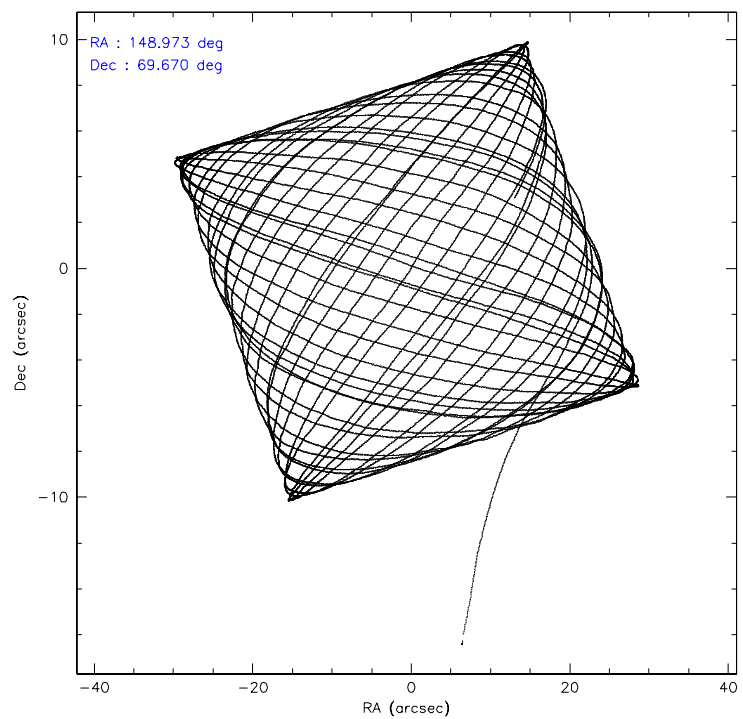
	ccd 2	ccd 3	ccd 5	ccd 6	ccd 7	ccd 8
level 1 events	120141	112356	174729	118567	233764	148449
rejected events	106490	99333	97278	103897	98504	117909
rejected %	88%	88%	55%	87%	42%	79%

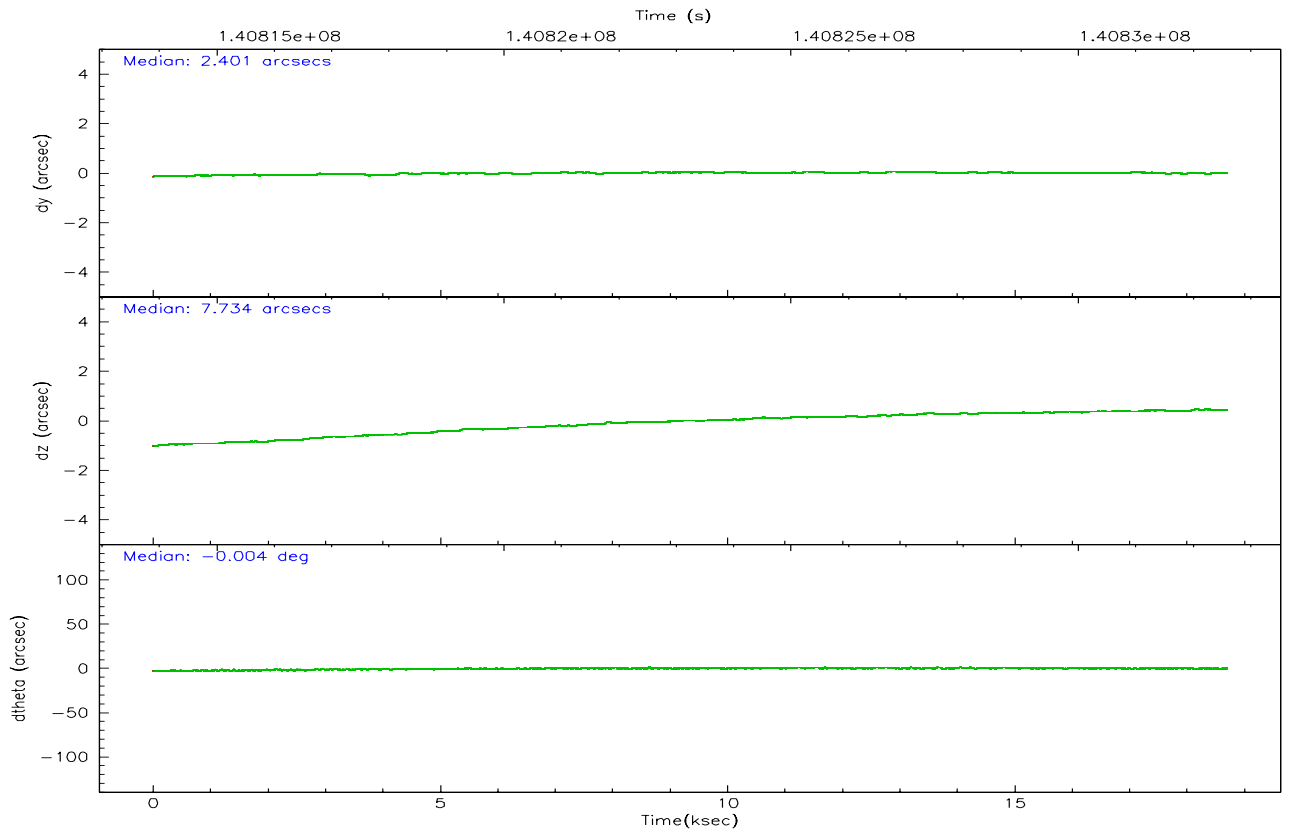
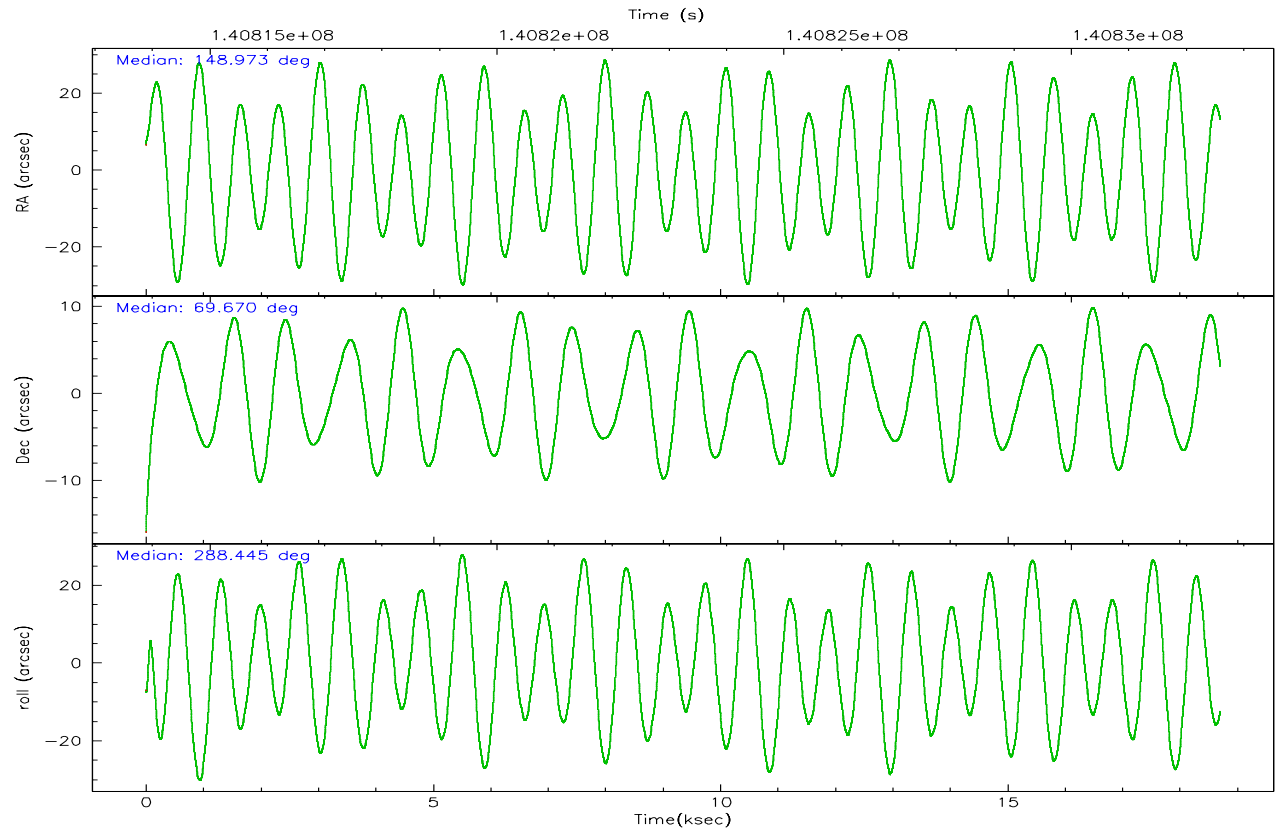
	ccd 2	ccd 3	ccd 5	ccd 6	ccd 7	ccd 8
grade 0 events	5811	5600	9193	6378	25489	9877
	4%	4%	5%	5%	10%	6%
grade 1 events	47	63	3715	58	250	80
	0%	0%	2%	0%	0%	0%
grade 2 events	2986	2693	23129	2834	35695	6791
	2%	2%	13%	2%	15%	4%
grade 3 events	1239	1221	1596	1356	11978	3067
	1%	1%	0%	1%	5%	2%
grade 4 events	1204	1246	1695	1399	11447	2841
	1%	1%	0%	1%	4%	1%
grade 5 events	4308	4795	8120	5254	11337	6379
	3%	4%	4%	4%	4%	4%
grade 6 events	2412	2264	41863	2704	50664	8000
	2%	2%	23%	2%	21%	5%
grade 7 events	102134	94474	85418	98584	86904	111414
	85%	84%	48%	83%	37%	75%

2.2 Compared Parameters

Parameter	Planned	Actual	Parameter	Planned	Actual
Instrument	ACIS	ACIS	Obspar format version number	6	6
Detector	ACIS-235678	ACIS-235678	Obspar file type	PREDICTED	ACTUAL
Grating	NONE	NONE	Obspar update status	NONE	UPDATED
Data mode	FAINT	FAINT	Number of optional ACIS chips dropped	0	0
Observation mode	POINTING	POINTING	On-chip summing requested	N	N
Pointing RA	148.913803	148.9732370513214	Subarray requested	NONE	NONE
Pointing Dec	69.687975	69.67017907312216	Alternating exposures requested	N	N
Pointing Roll	288.348272	288.4491471174352	Primary exposure time	0.000000	3.2
Roll angle	295.000000	295.000000			
Roll tolerance	10.000000	10.000000			
Roll constraint allows 180D rotation	N	N			
SIM focus pos (mm)	-0.684267	-0.6828225247311905			
SIM defocus (mm)	0	0.001444936568705701			
SIM translation stage pos (mm)	-190.132523	-190.1425803651734			
SIM translation stage offset (mm)	0	0.01005778216563158			
Observation start time	140814087.184000	140813303.29072			
Observation start date	2002-06-18T19:00:23	2002-06-18T18:48:23			
Observation end time	140832587.184000	140833372.79154			
Observation end date	2002-06-19T00:08:43	2002-06-19T00:22:52			
Read mode	TIMED	TIMED			

2.3 Aspect



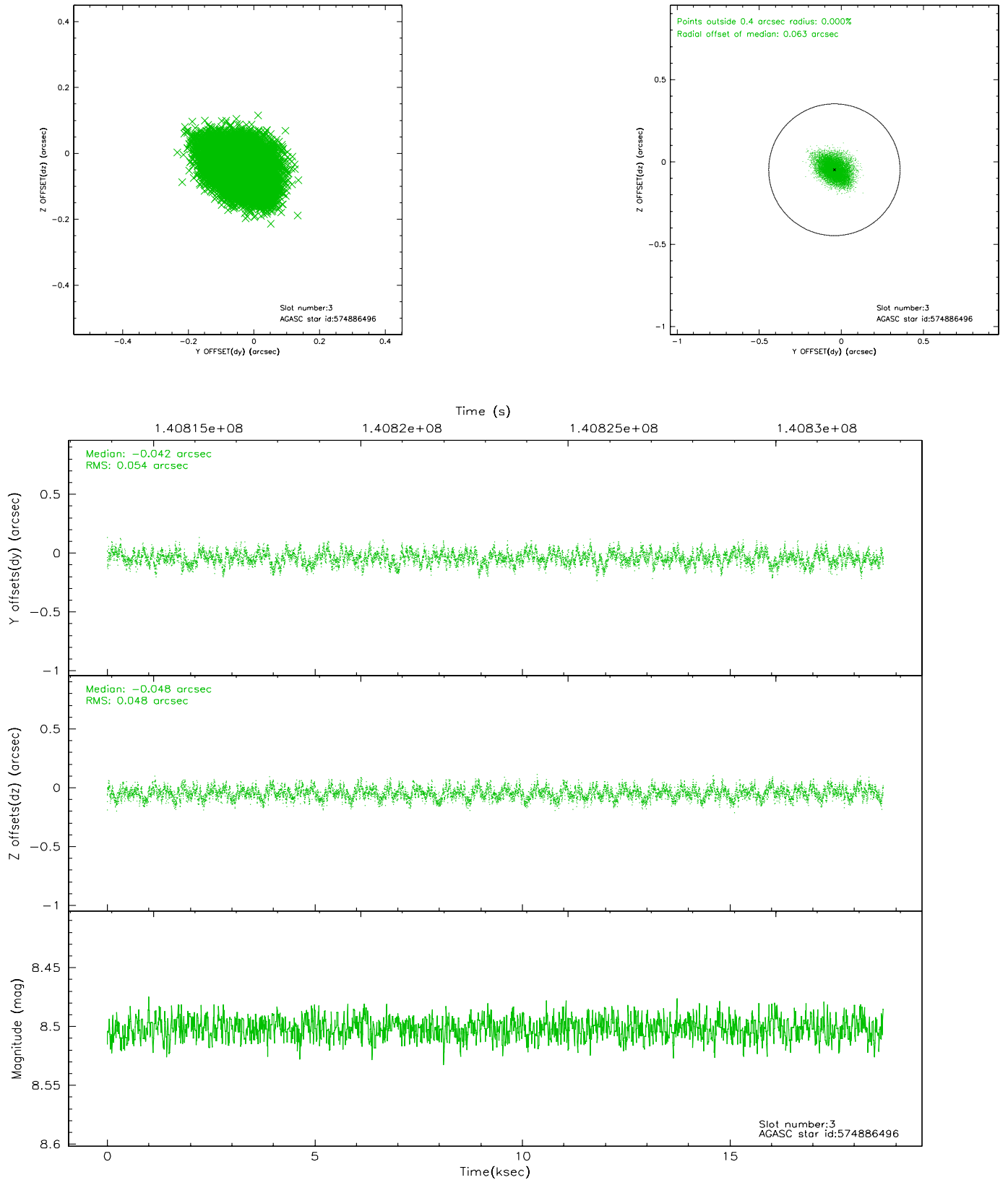


Slot Statistics

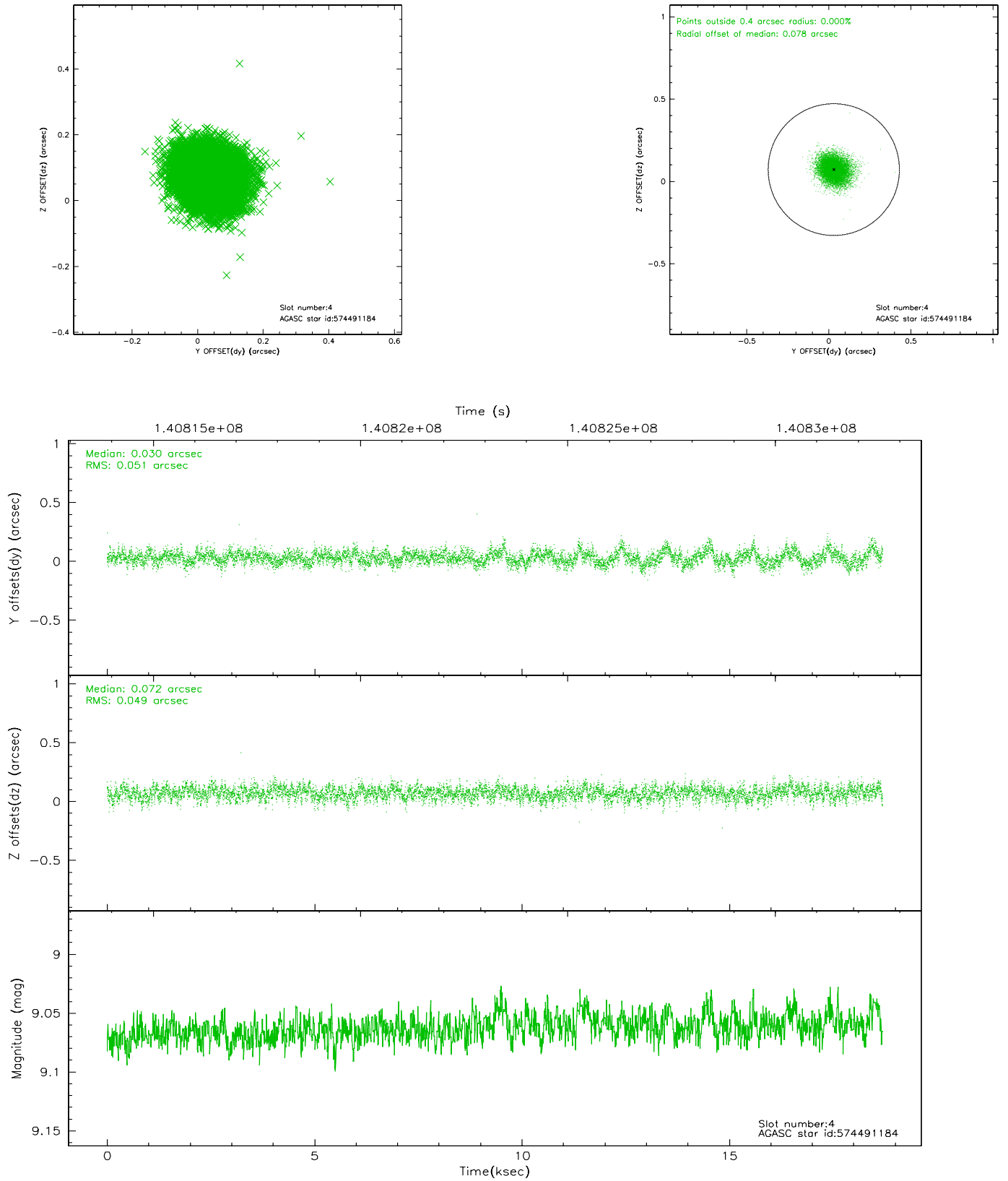
slot	status	id	mag	n_pts	med_dy	med_dz	dr1	dr2	ra	dec	mean_y	mean_z
0	FID	ACIS-S-2	7.11	4561	0.003	0.033	0.012	0.022	0.000000	0.000000	-755.02	-1728.72
1	FID	ACIS-S-4	7.20	4562	-0.088	-0.010	0.008	0.026	0.000000	0.000000	2158.08	179.50
2	FID	ACIS-S-5	7.24	4560	0.053	-0.012	0.011	0.022	0.000000	0.000000	-1807.53	173.42
3	GUIDE	574886496	8.50	9119	-0.042	-0.048	0.078	0.125	148.945563	70.041136	-1194.99	438.14
4	GUIDE	574491184	9.06	9121	0.030	0.072	0.075	0.122	148.582453	69.768699	-407.21	-298.60
5	GUIDE	574491872	9.28	9119	0.059	-0.049	0.144	0.222	147.207613	69.765453	-961.05	-1918.50
6	GUIDE	574491280	9.34	9119	0.055	-0.051	0.090	0.144	148.611567	69.450135	691.32	-631.31
7	GUIDE	574489568	9.77	9115	-0.119	0.088	0.106	0.170	147.223974	69.438157	152.85	-2300.49

2.4 Star Slots

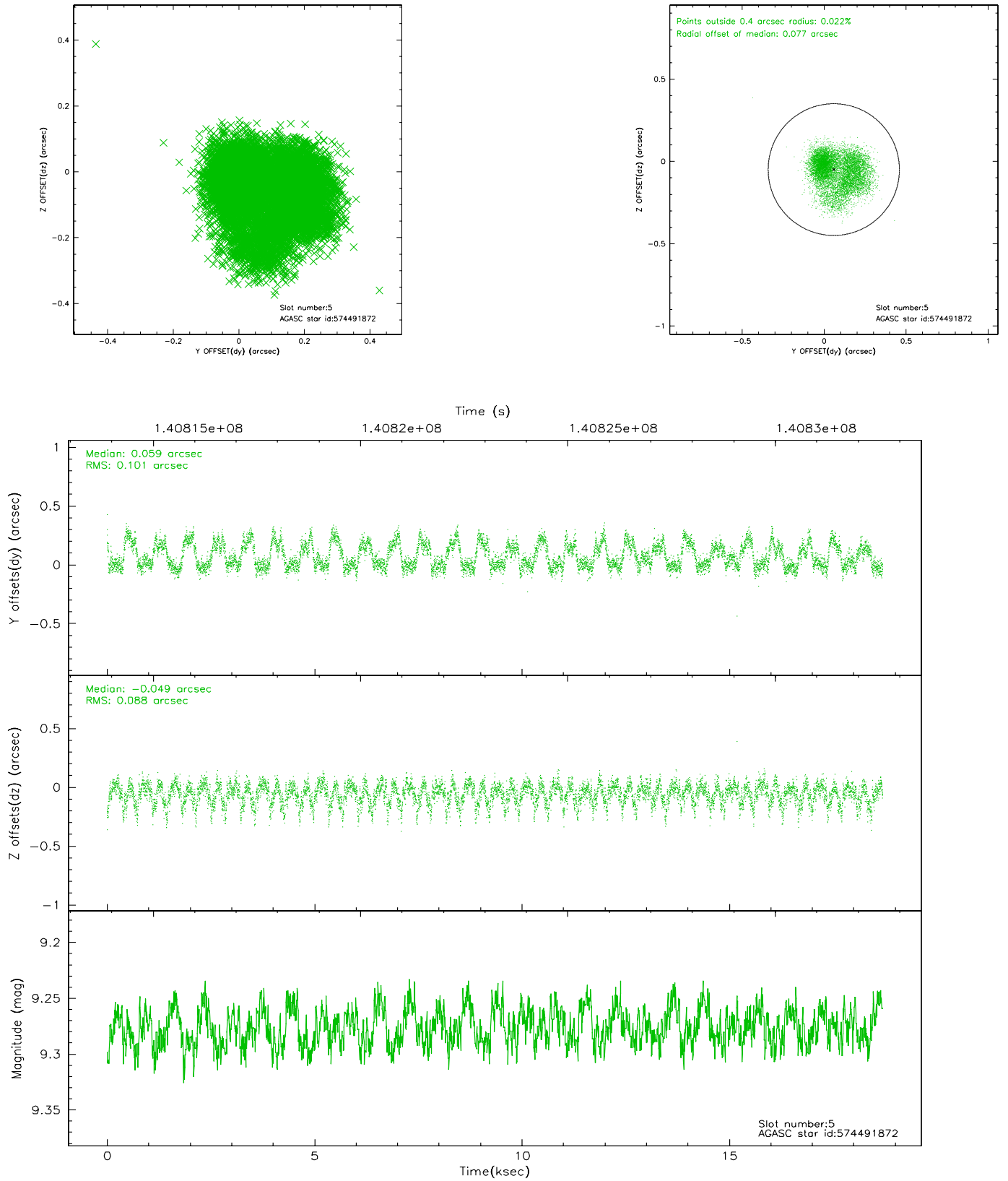
2.4.1 Slot 3



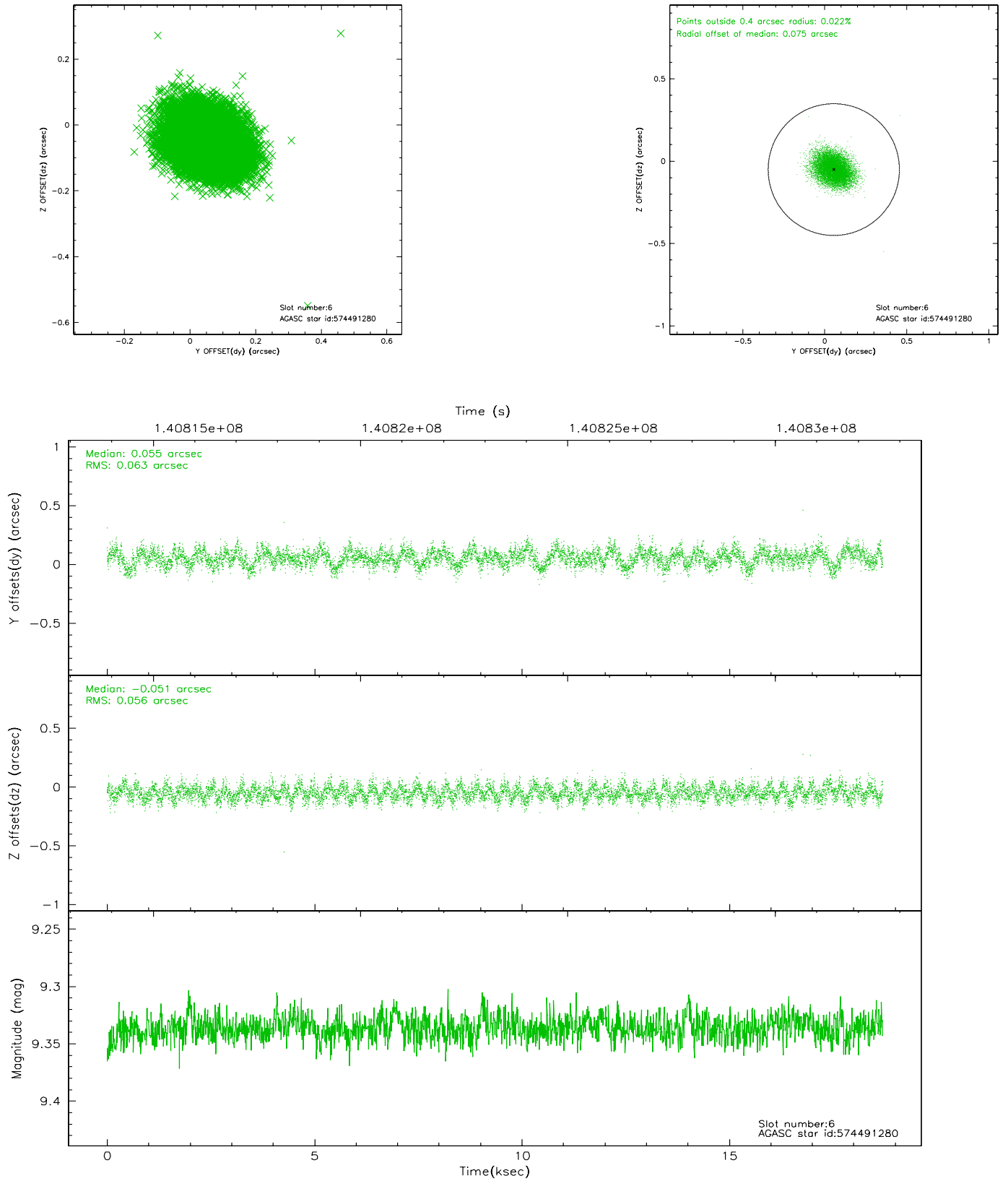
2.4.2 Slot 4



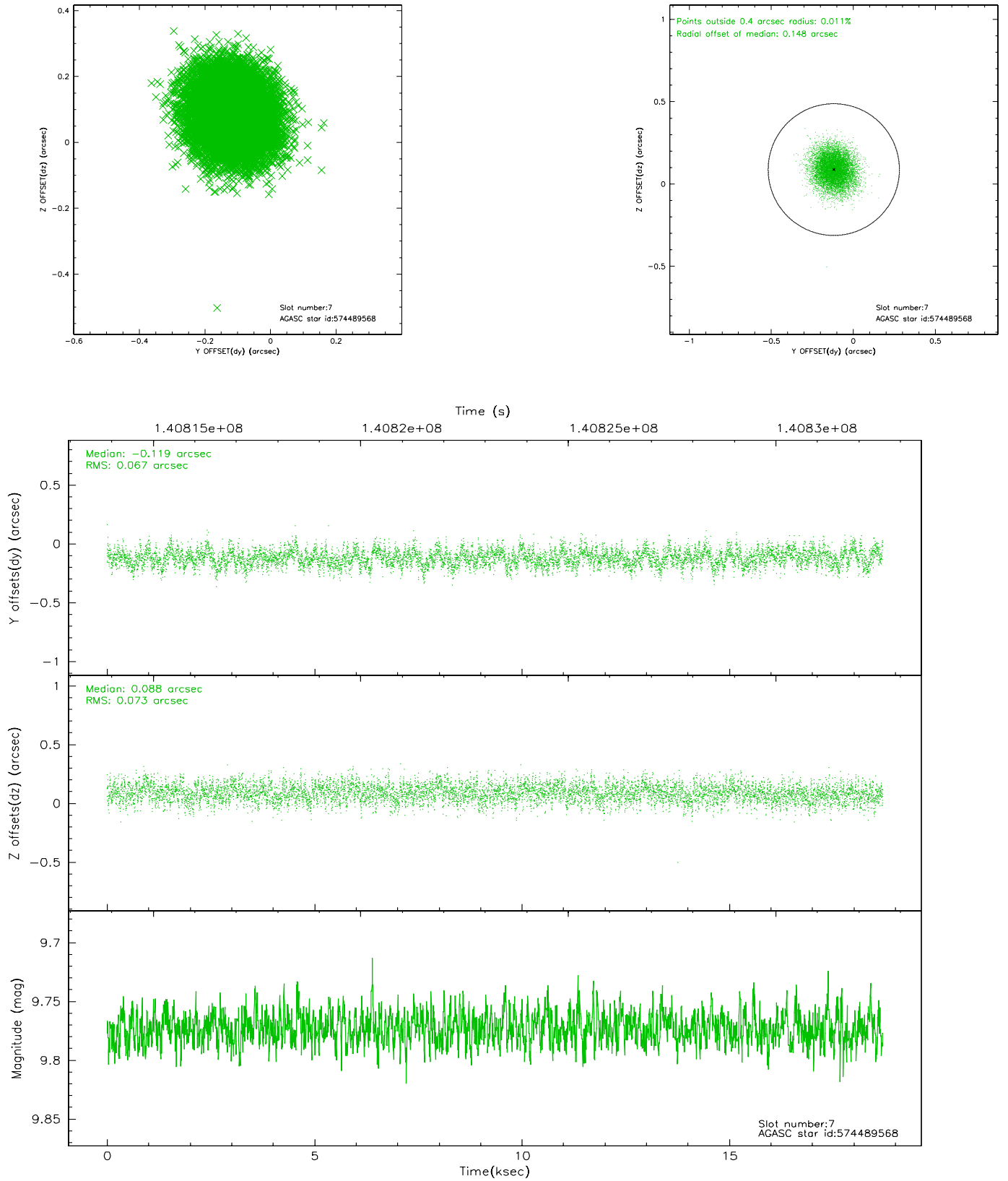
2.4.3 Slot 5



2.4.4 Slot 6

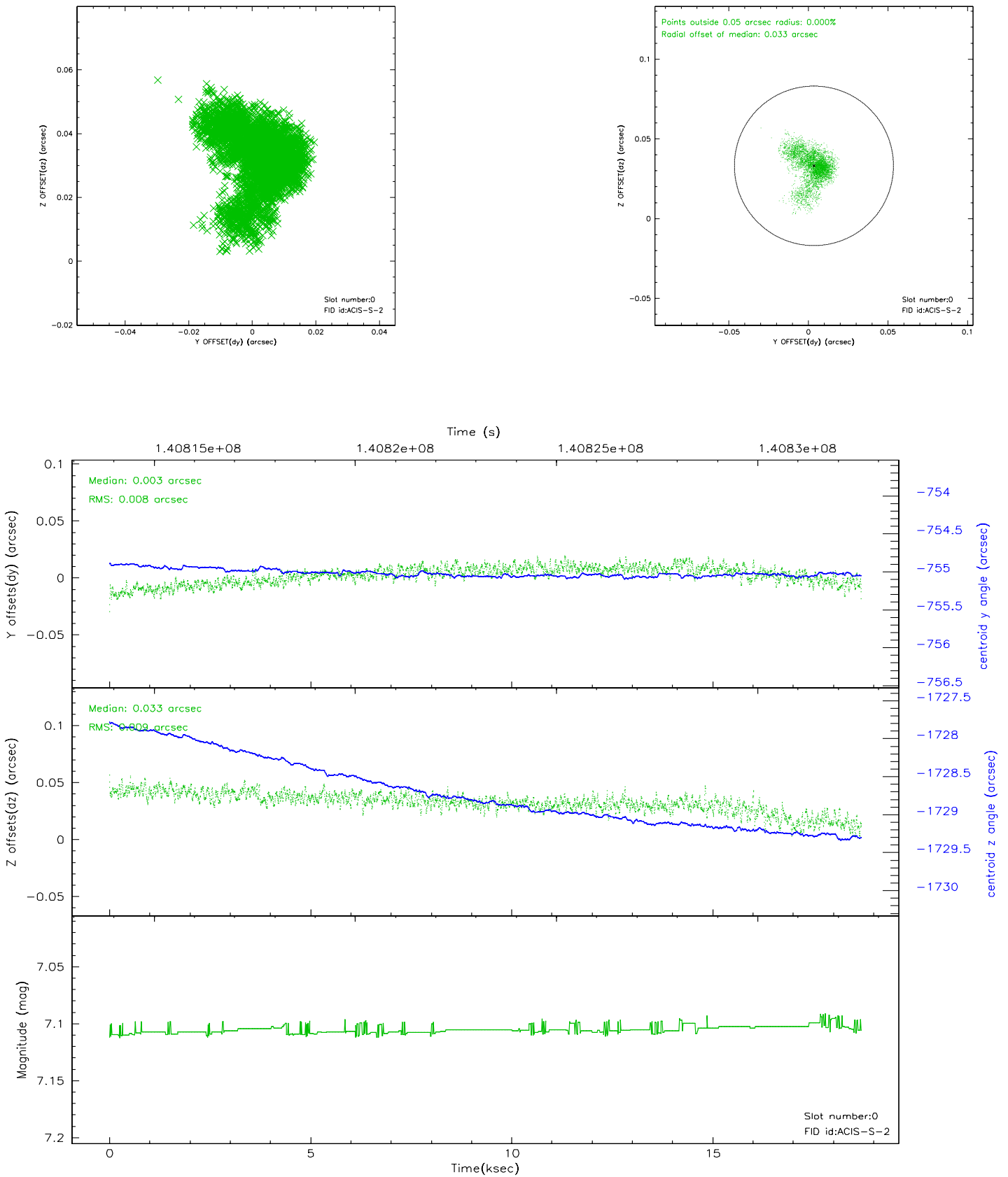


2.4.5 Slot 7

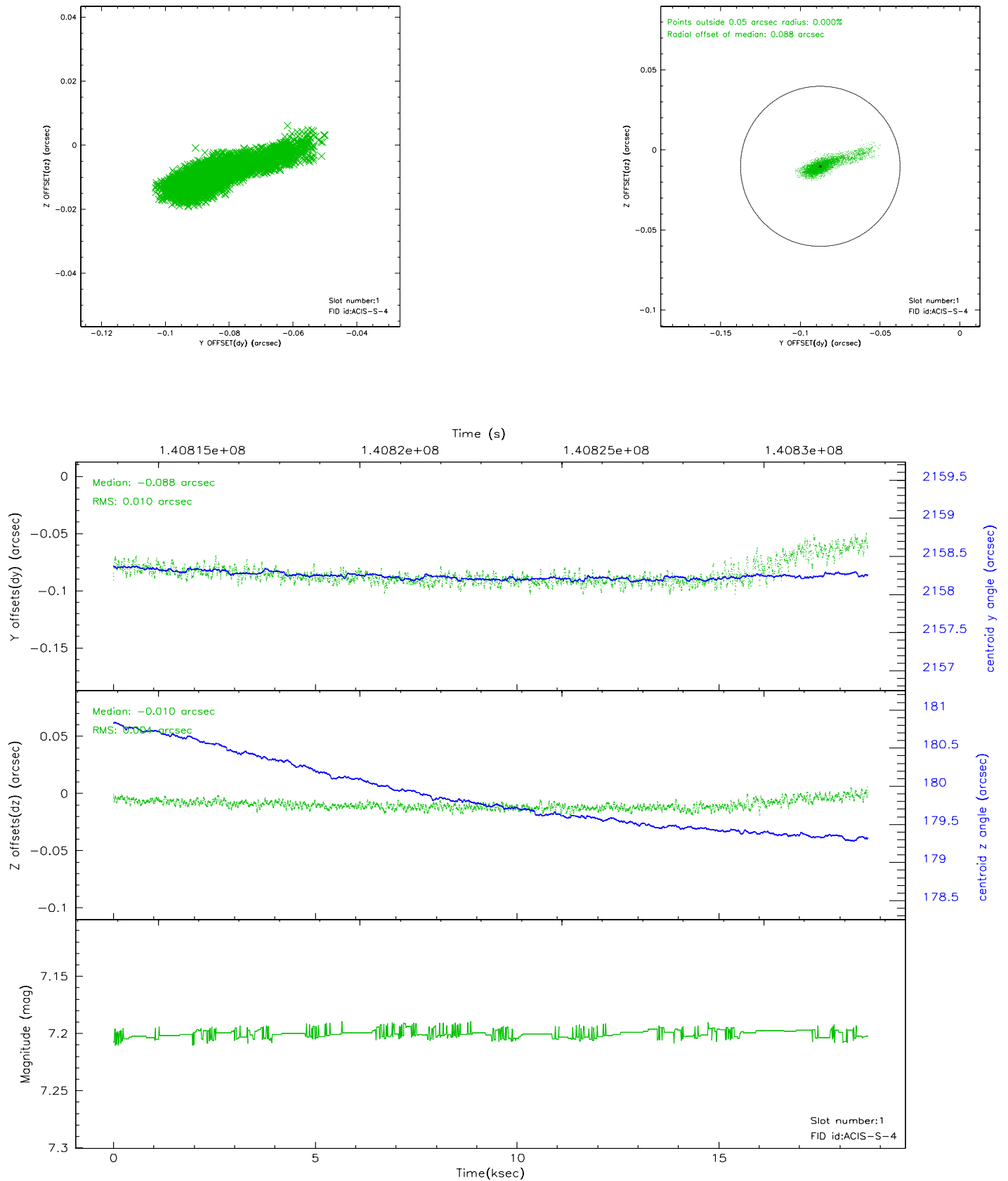


2.5 FID Slots

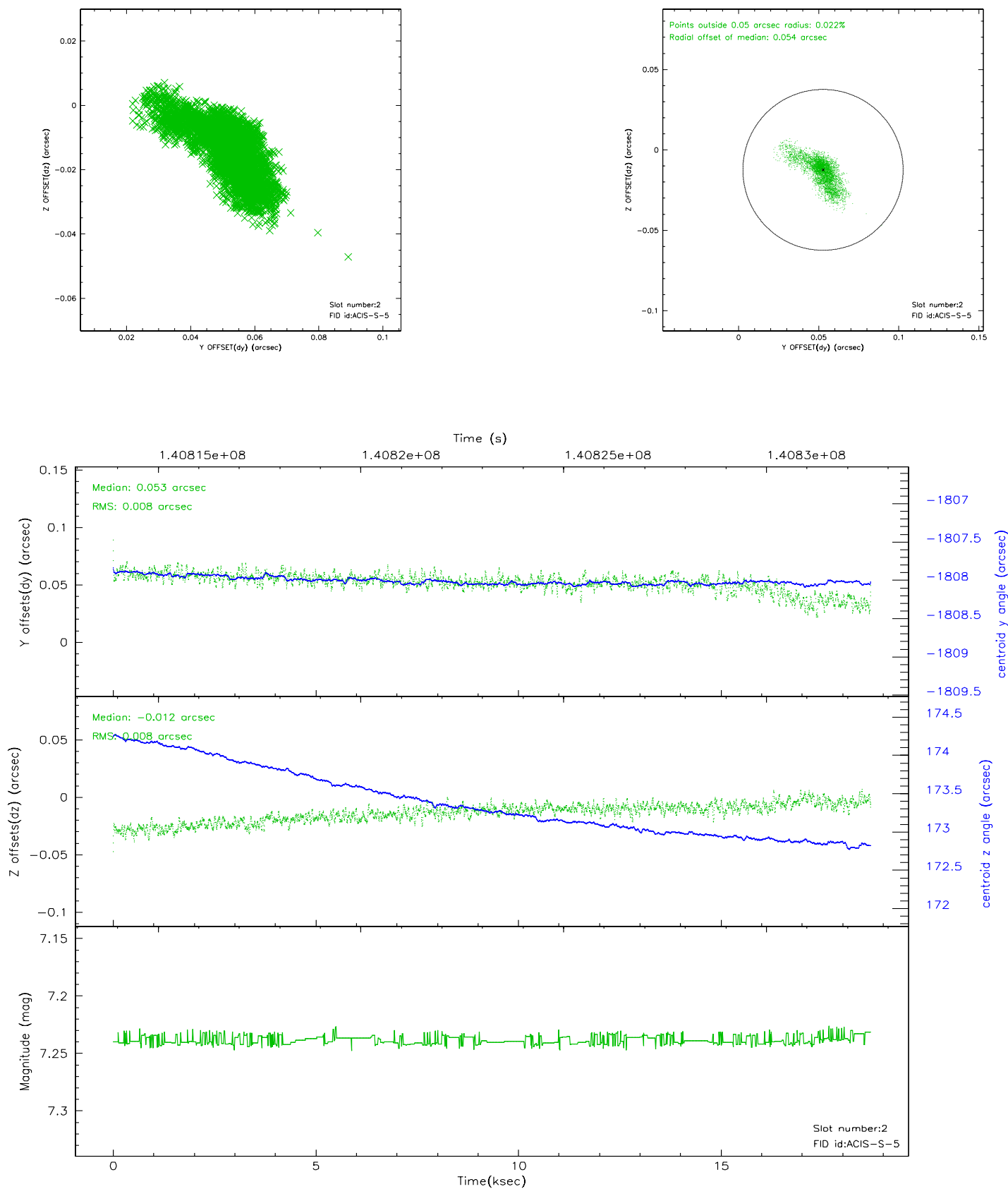
2.5.1 Slot 0



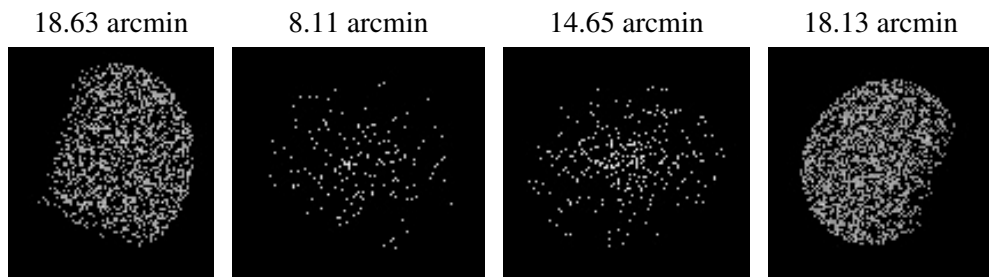
2.5.2 Slot 1



2.5.3 Slot 2



3 Point Sources



A Summary

A.1 Status

V&V Scientist	Beth Sundheim
V&V Date (YYYY-MM-DD)	2006.09.19
V&V Edition	1
V&V Disposition and Status	OK
V&V Charge Time	18.255

A.2 Comments

Roll constraint satisfied.