

V&V Reference Report

L2 ASCDS Version : 7.6.9

Observation 2928 - L2 Version 001
Chandra X-Ray Center

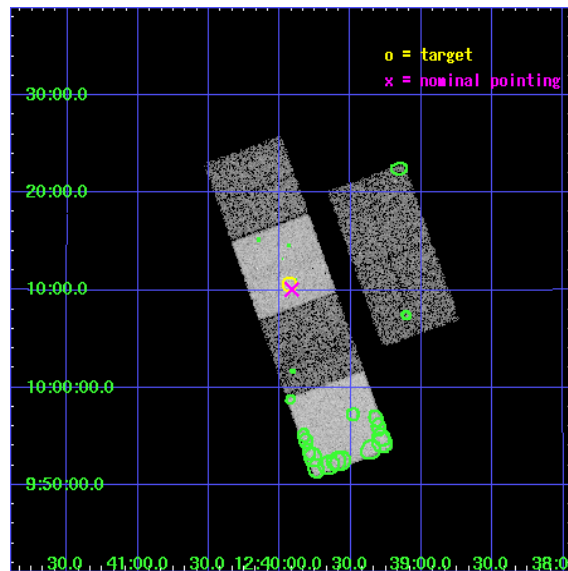
L2 Processing Date : Sep 22 2006

Contents

1	Front	2
2	OBI	3
2.1	OBI	3
2.1.1	Images	3
2.1.2	Bias	3
2.1.3	Parameters	4
2.1.4	Events	4
2.2	Compared Parameters	5
2.3	Aspect	6
2.4	Star Slots	9
2.4.1	Slot 3	9
2.4.2	Slot 4	10
2.4.3	Slot 5	11
2.4.4	Slot 6	12
2.4.5	Slot 7	13
2.5	FID Slots	14
2.5.1	Slot 0	14
2.5.2	Slot 1	15
2.5.3	Slot 2	16
3	Point Sources	17
A	Summary	18
A.1	Status	18
A.2	Comments	18

1 Front

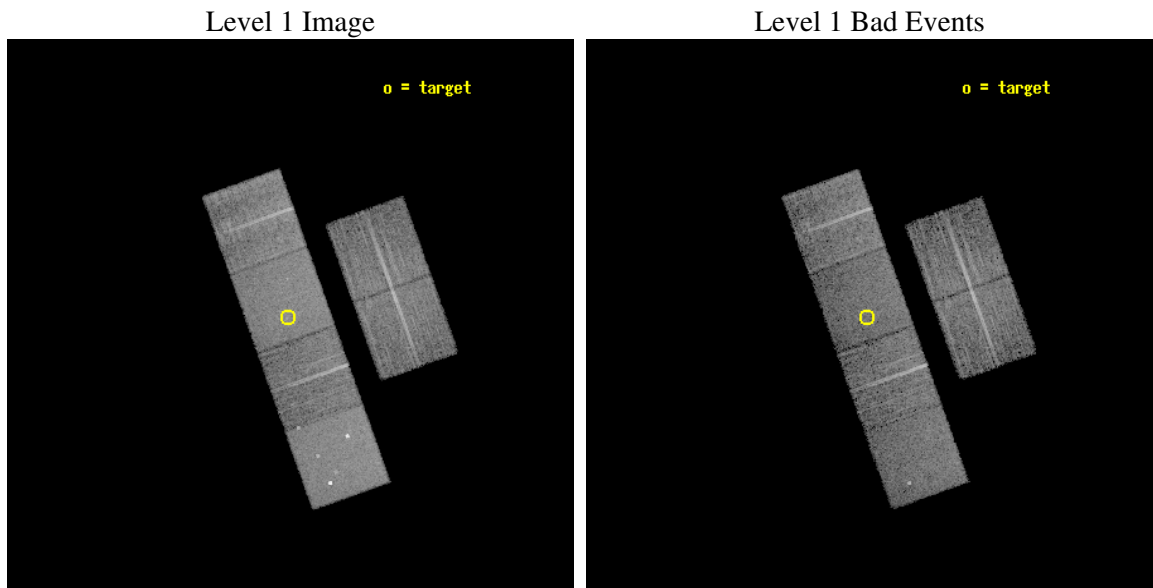
seq_num	600265
obs_id	2928
title	CHANDRA SURVEY OF GALAXIES WITH KNOWN BLACK HOLE MASSES
observer	Dr. Andrew Ptak
object	NGC 4596
dtcycle	0
cycle	P
ra_targ	189.983333
dec_targ	10.176417
ra_nom	189.97842951411
dec_nom	10.167994539732
roll_nom	250.29652134211
revision	2
ontime	9331.1999652386
livetime	9213.0426927047
ontime2	9331.1999652386
ontime3	9331.1999652386
ontime5	9331.1999652386
ontime6	9331.1999652386
ontime7	9331.1999652386
ontime8	9331.1999652386
l2events	93951



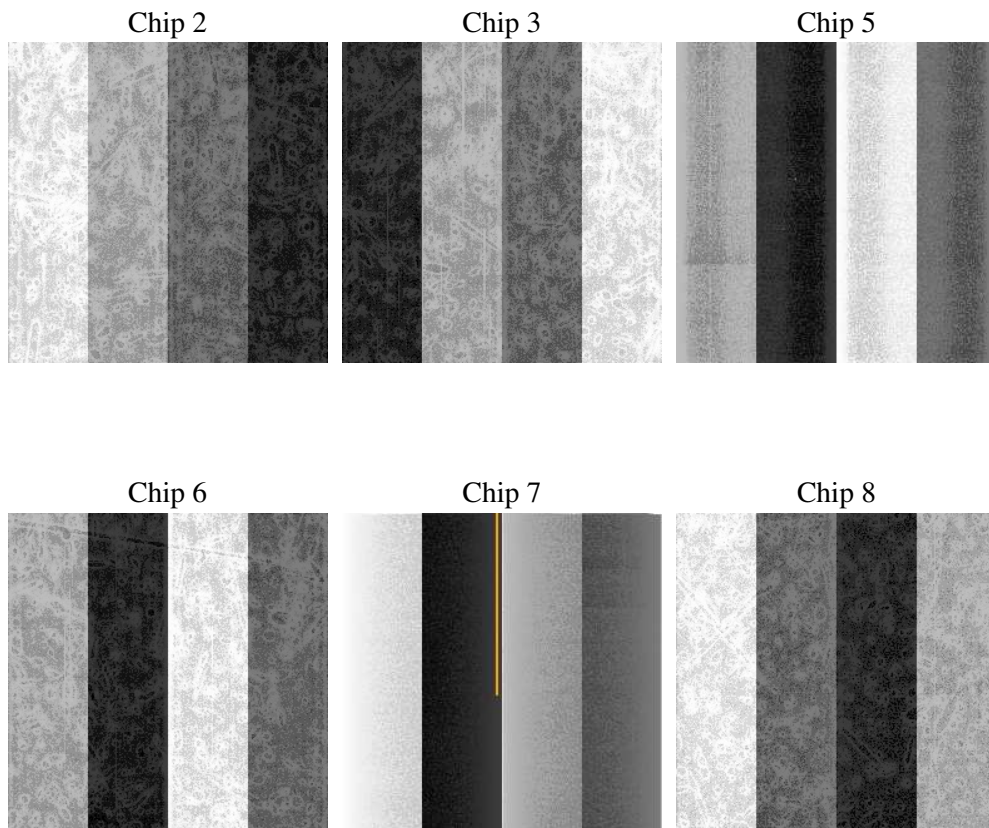
2 OBI

2.1 OBI

2.1.1 Images



2.1.2 Bias



2.1.3 Parameters

obi_num	0
ascdsver	7.6.9
caldbver	3.2.3
date	2006-09-22T22:15:48
revision	2

sched_exp_time	9373.923000
ontime	9337.3201036155
ontime2	9337.3201036155
ontime3	9337.3201036155
ontime5	9337.3201235533
ontime6	9337.3201036155
ontime7	9337.3201036155
ontime8	9337.3201036155
l1events	437078

2.1.4 Events

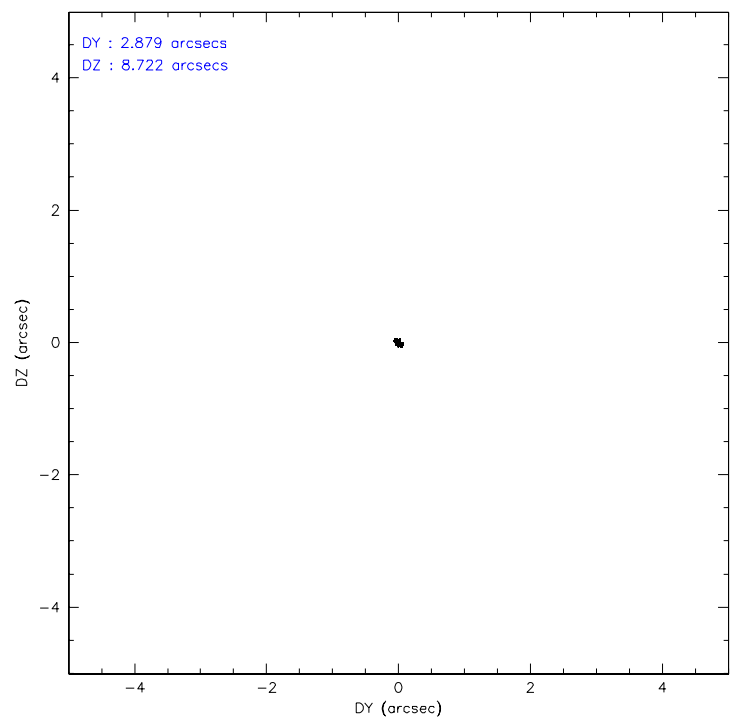
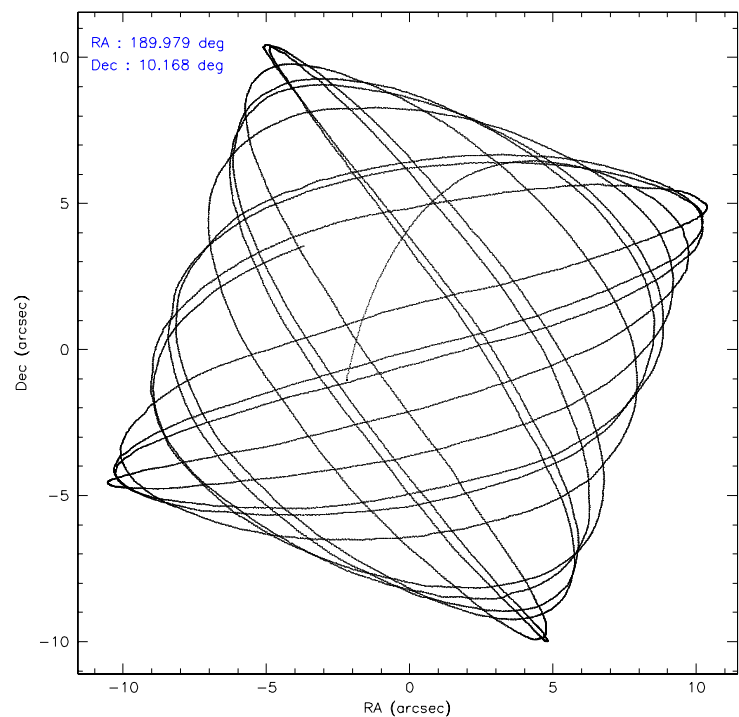
	ccd 2	ccd 3	ccd 5	ccd 6	ccd 7	ccd 8
level 1 events	63084	60823	92290	62726	80511	77644
rejected events	55831	53794	50116	55408	48343	61995
rejected %	88%	88%	54%	88%	60%	79%

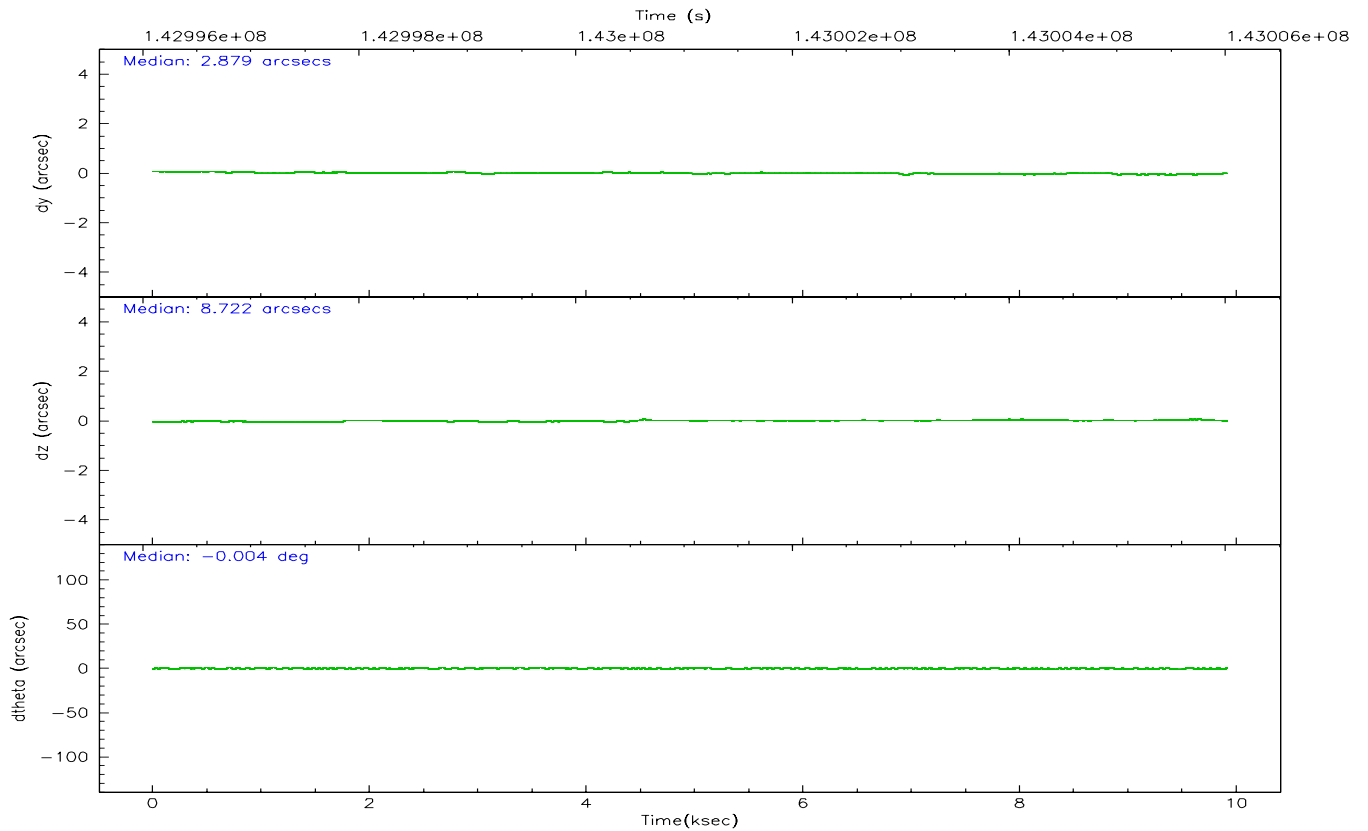
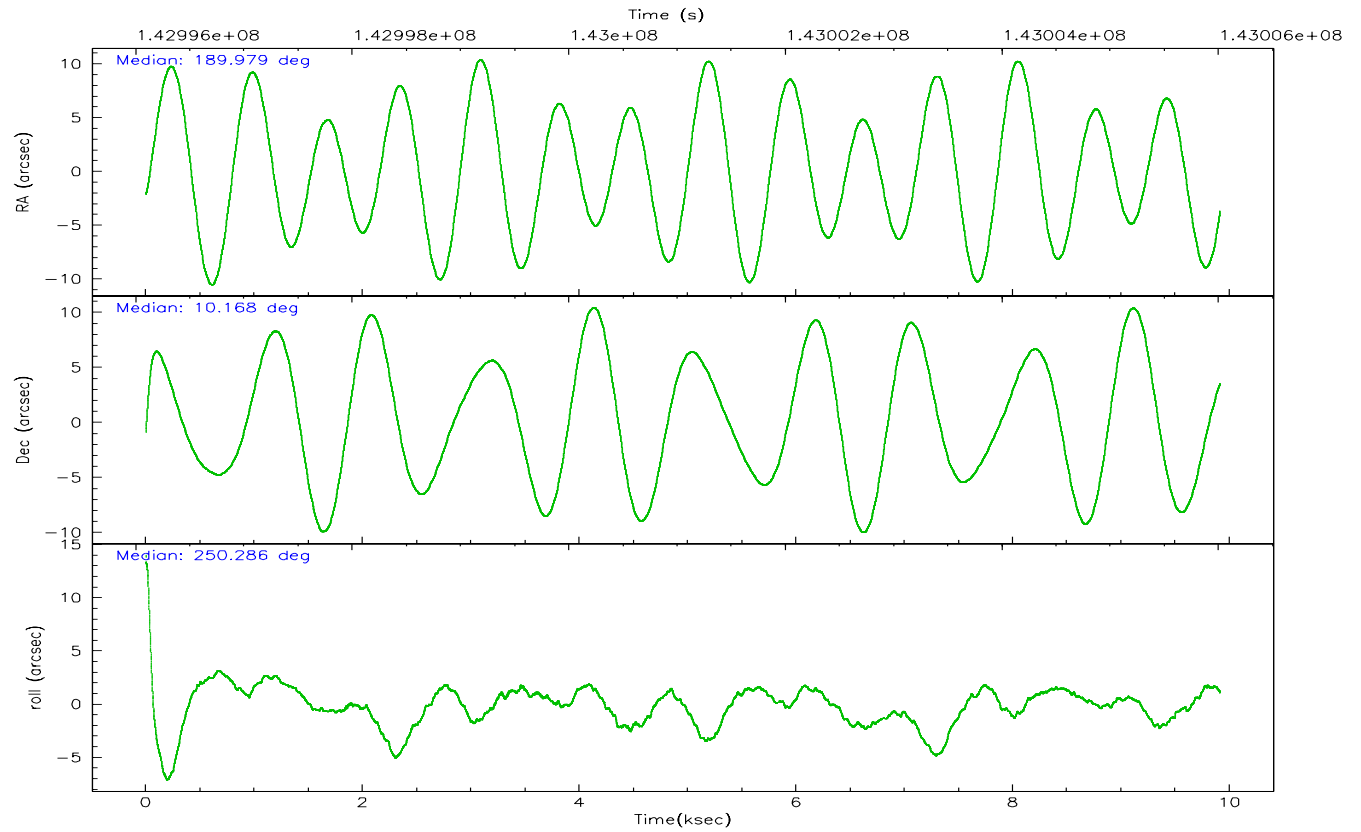
	ccd 2	ccd 3	ccd 5	ccd 6	ccd 7	ccd 8
grade 0 events	3139	3059	5270	3078	2504	4977
	4%	5%	5%	4%	3%	6%
grade 1 events	34	28	74	27	44	43
	0%	0%	0%	0%	0%	0%
grade 2 events	1603	1449	12827	1449	7979	3537
	2%	2%	13%	2%	9%	4%
grade 3 events	641	672	899	716	1778	1614
	1%	1%	0%	1%	2%	2%
grade 4 events	639	677	874	692	1626	1450
	1%	1%	0%	1%	2%	1%
grade 5 events	2302	2384	4188	2745	5445	3400
	3%	3%	4%	4%	6%	4%
grade 6 events	1236	1179	22319	1390	18290	4078
	1%	1%	24%	2%	22%	5%
grade 7 events	53490	51375	45839	52629	42845	58545
	84%	84%	49%	83%	53%	75%

2.2 Compared Parameters

Parameter	Planned	Actual	Parameter	Planned	Actual
Instrument	ACIS	ACIS	Obspar format version number	6	6
Detector	ACIS-235678	ACIS-235678	Obspar file type	PREDICTED	ACTUAL
Grating	NONE	NONE	Obspar update status	NONE	UPDATED
Data mode	FAINT	FAINT	Number of optional ACIS chips dropped	0	0
Observation mode	POINTING	POINTING	On-chip summing requested	N	N
Pointing RA	189.973135	189.978429514108	Subarray requested	NONE	NONE
Pointing Dec	10.194751	10.16799453973248	Alternating exposures requested	N	N
Pointing Roll	250.140817	250.2965213421134	Primary exposure time	0.000000	3.2
SIM focus pos (mm)	-0.684267	-0.6828225247311905			
SIM defocus (mm)	0	0.001444936568705701			
SIM translation stage pos (mm)	-190.132523	-190.1400660498719			
SIM translation stage offset (mm)	0	0.00754346686406393			
Observation start time	142996639.184000	142995504.2927			
Observation start date	2002-07-14T01:16:15	2002-07-14T00:58:24			
Observation end time	143006013.184000	143006327.78065			
Observation end date	2002-07-14T03:52:29	2002-07-14T03:58:47			
Read mode	TIMED	TIMED			

2.3 Aspect



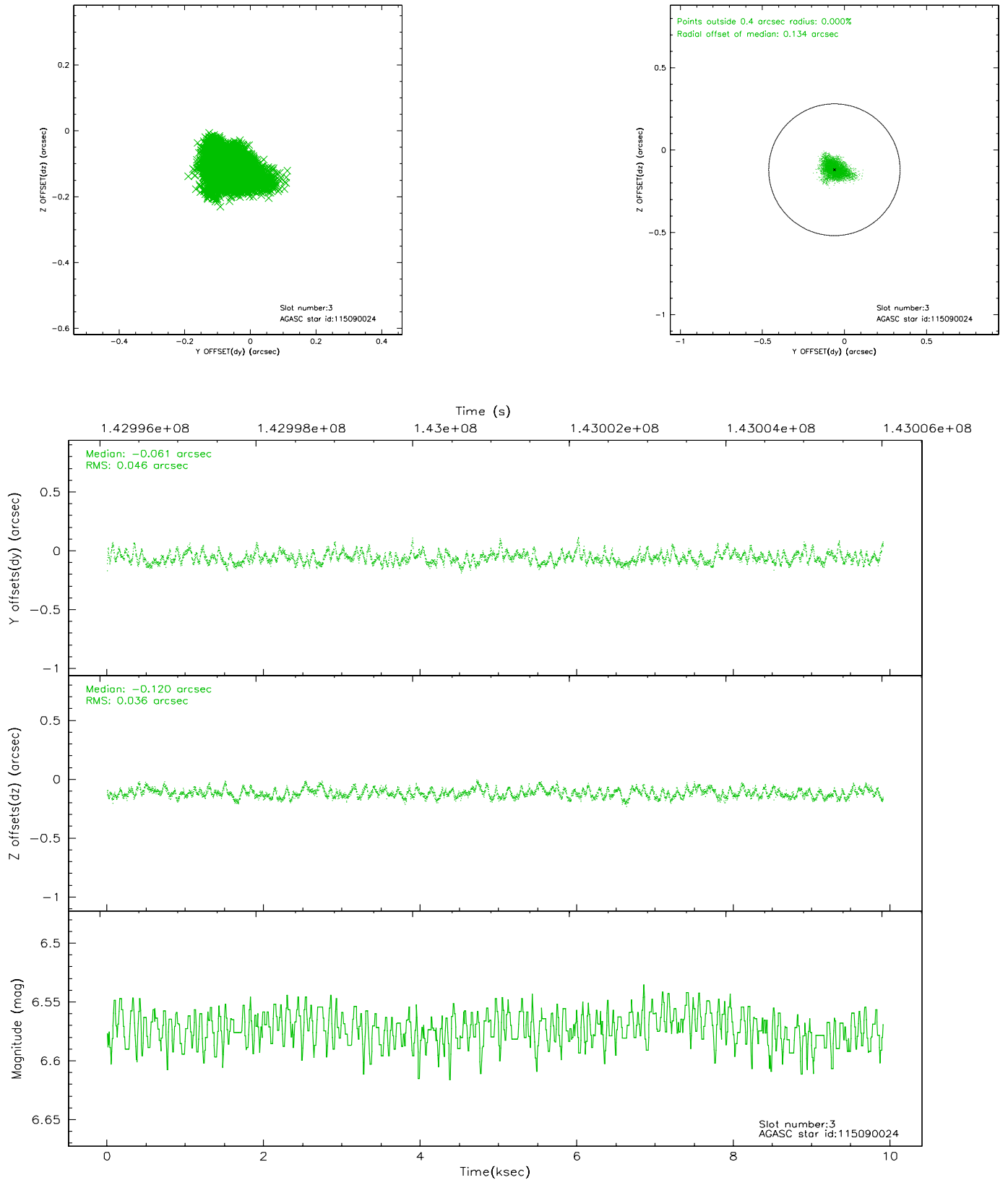


Slot Statistics

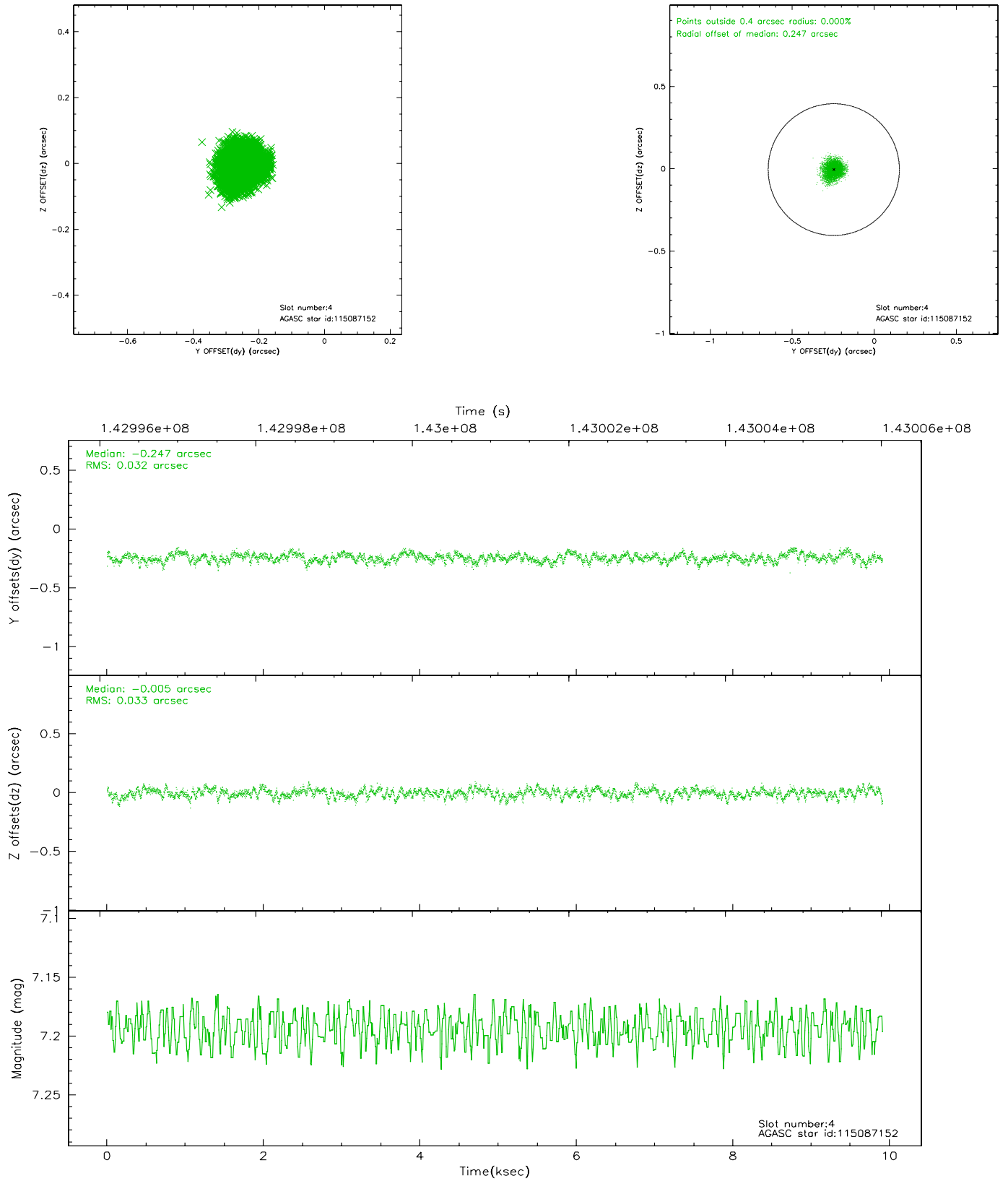
slot	status	id	mag	n_pts	med_dy	med_dz	dr1	dr2	ra	dec	mean_y	mean_z
0	FID	ACIS-S-2	7.11	2417	-0.005	0.021	0.006	0.010	0.000000	0.000000	-755.52	-1729.91
1	FID	ACIS-S-4	7.20	2417	-0.056	-0.003	0.005	0.009	0.000000	0.000000	2157.46	177.99
2	FID	ACIS-S-5	7.24	2418	0.030	-0.009	0.006	0.010	0.000000	0.000000	-1807.64	172.27
3	GUIDE	115090024	6.57	4837	-0.061	-0.120	0.061	0.101	190.393304	10.426268	-1289.22	1114.84
4	GUIDE	115087152	7.19	4837	-0.247	-0.005	0.050	0.079	189.409753	10.584138	-641.72	-2352.28
5	GUIDE	114691472	9.12	4832	0.161	0.025	0.074	0.123	189.516151	9.813551	1841.87	-1059.55
6	GUIDE	115087240	9.25	4835	-0.002	0.107	0.093	0.149	189.980657	10.358703	-562.54	-176.19
7	GUIDE	115089624	9.66	4833	0.149	-0.005	0.105	0.166	189.471947	10.002512	1254.79	-1436.89

2.4 Star Slots

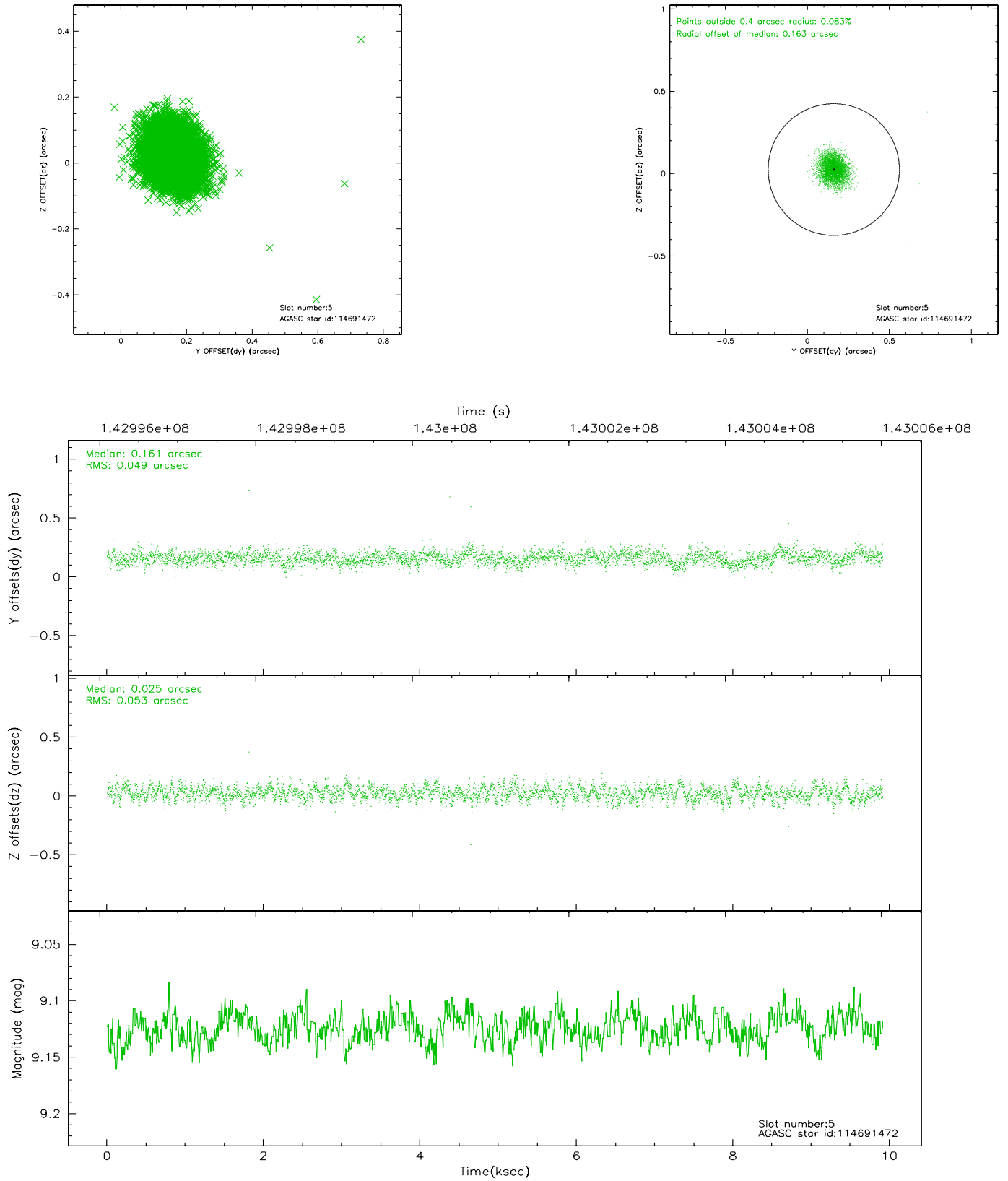
2.4.1 Slot 3



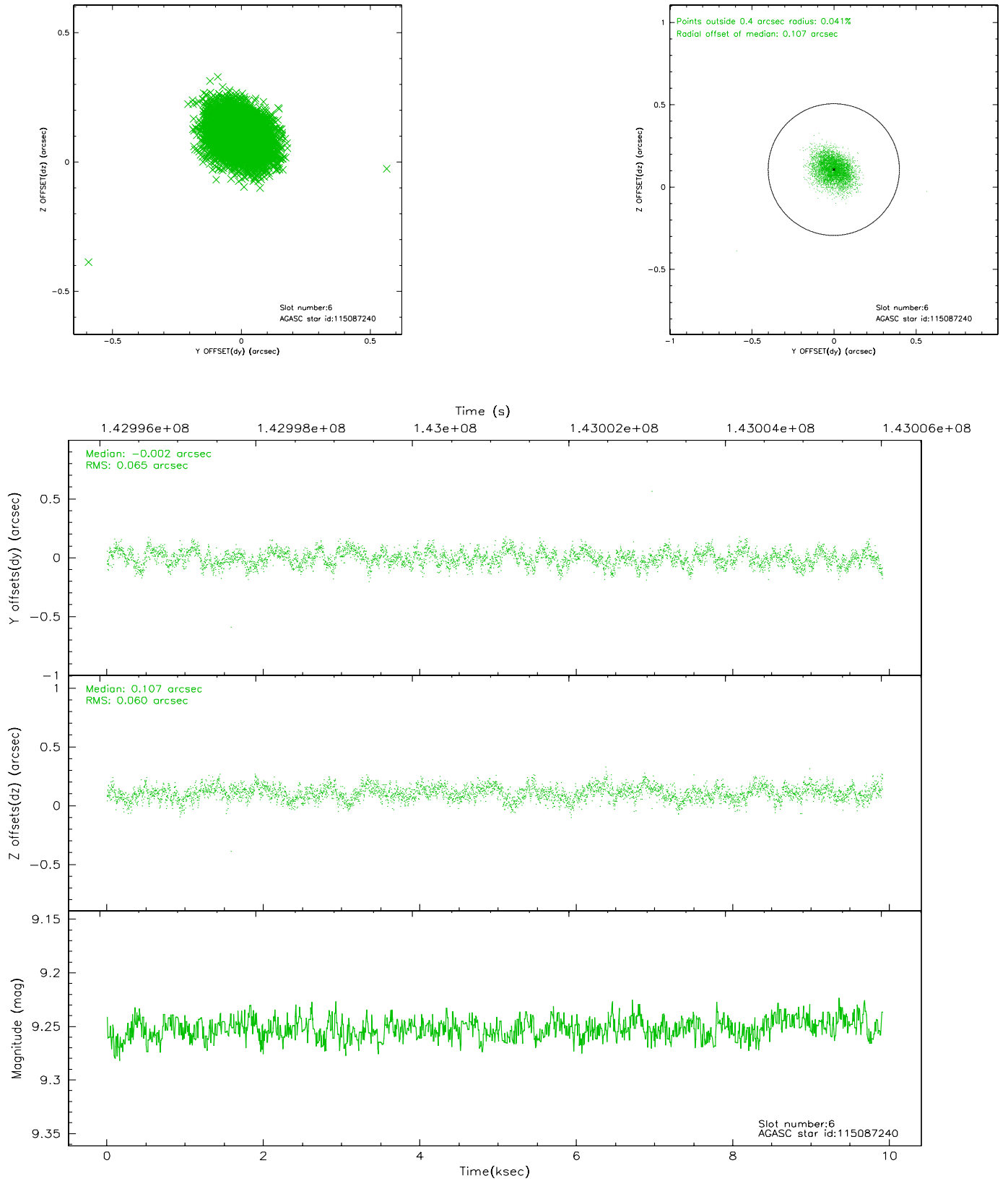
2.4.2 Slot 4



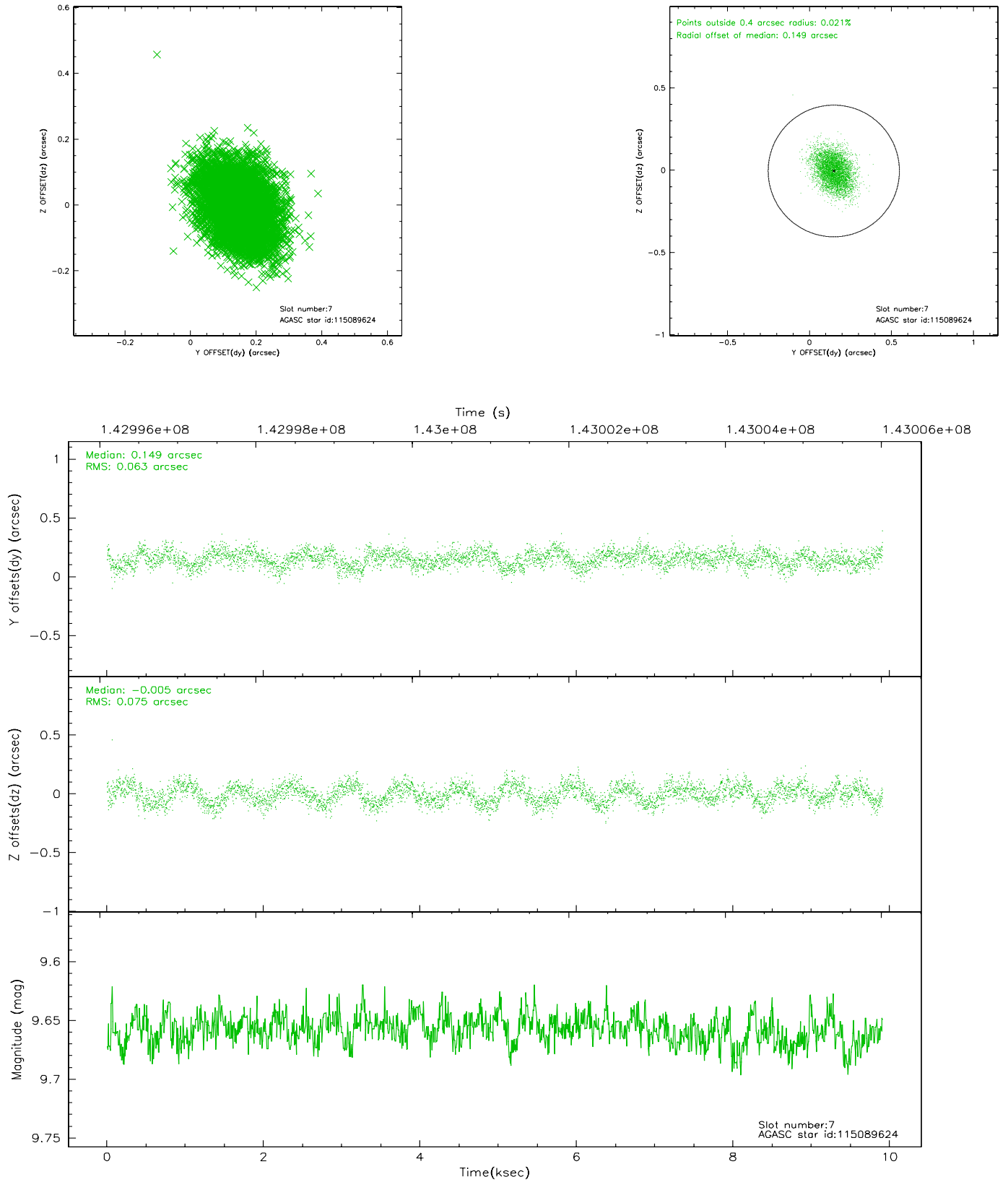
2.4.3 Slot 5



2.4.4 Slot 6

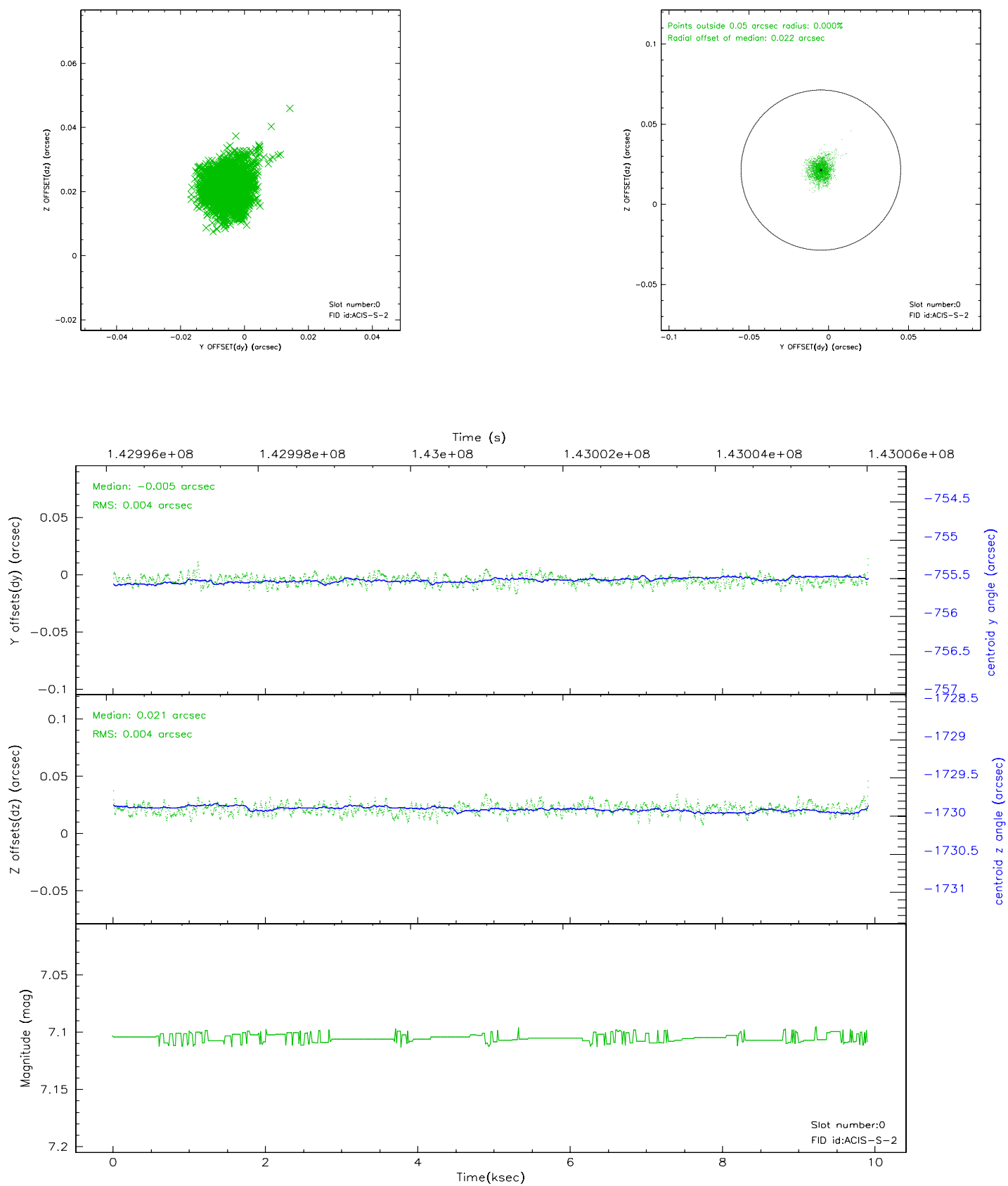


2.4.5 Slot 7

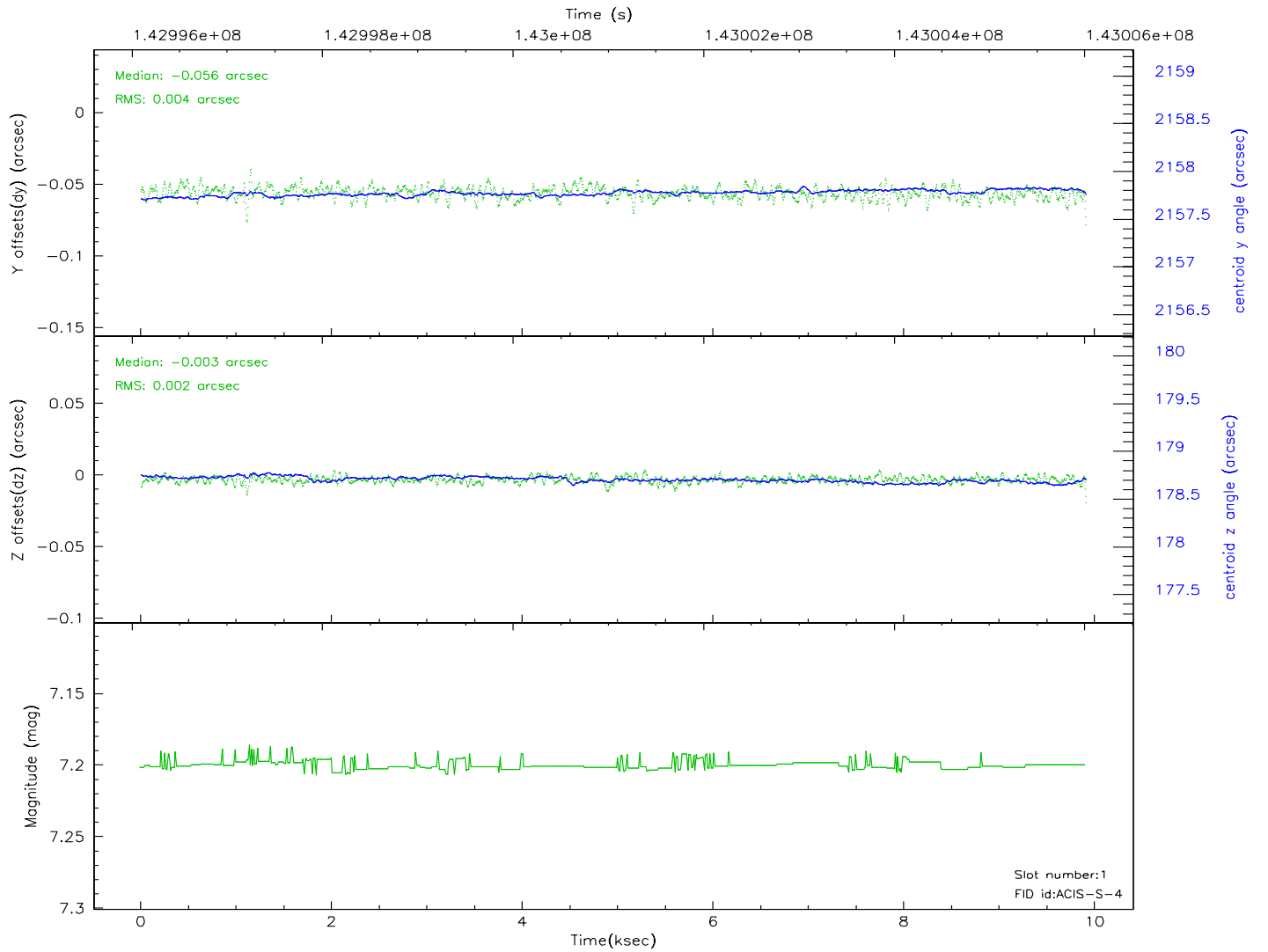
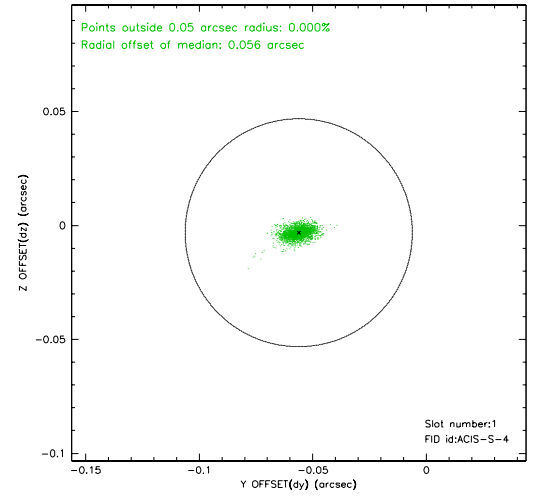
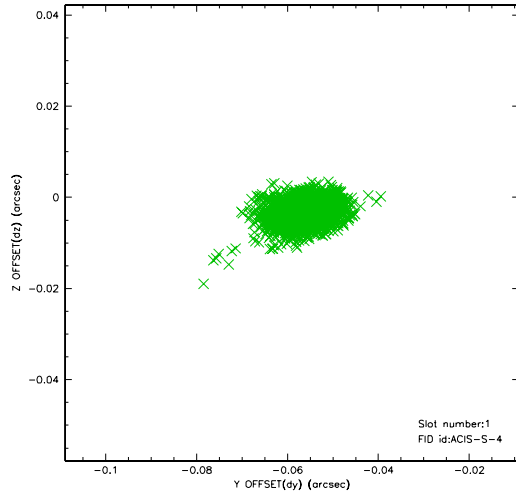


2.5 FID Slots

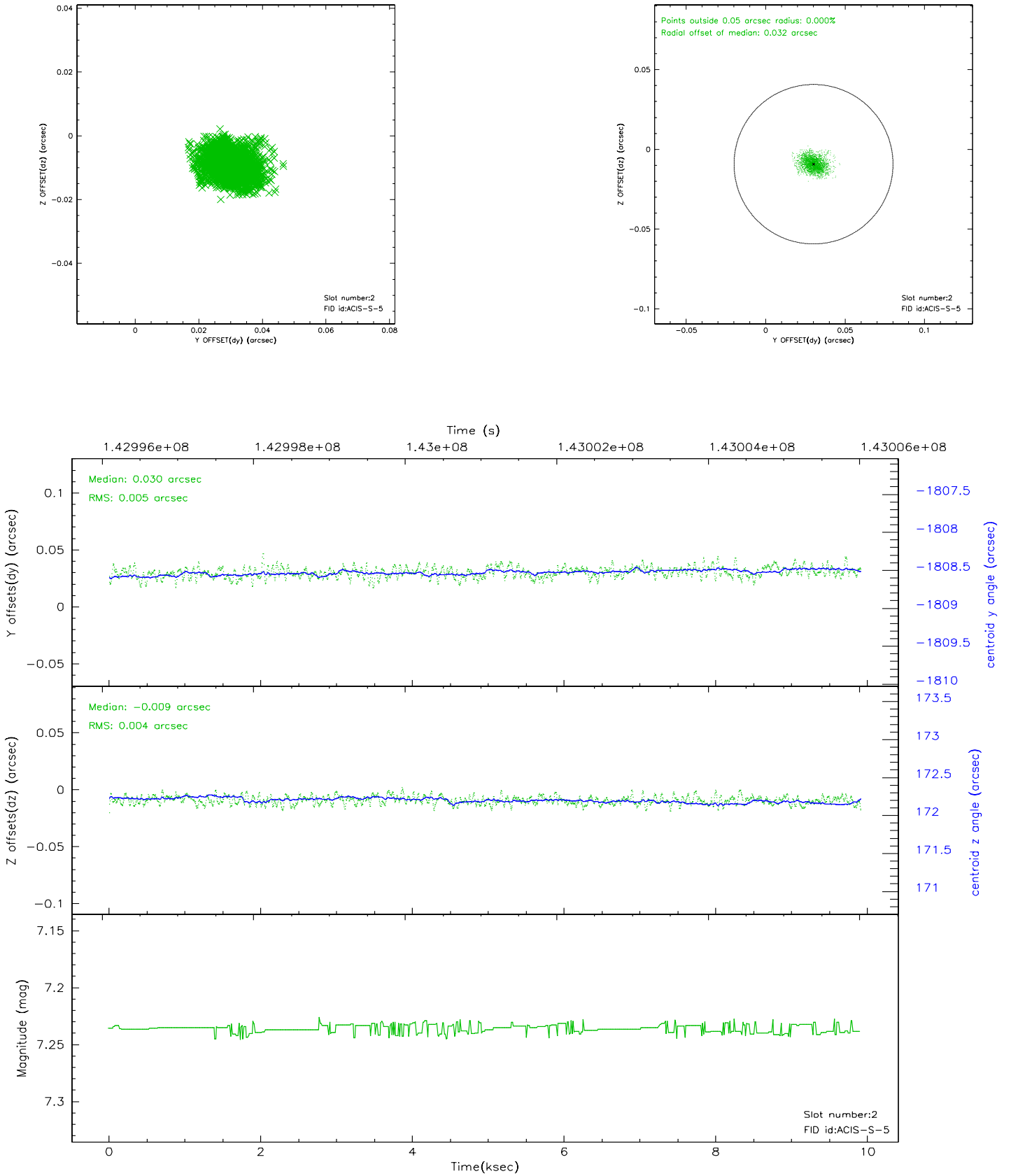
2.5.1 Slot 0



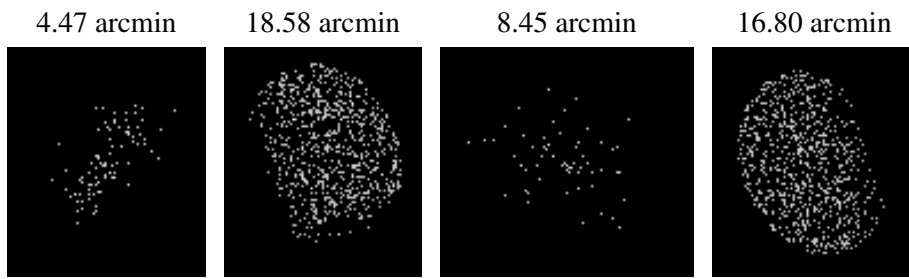
2.5.2 Slot 1



2.5.3 Slot 2



3 Point Sources



A Summary

A.1 Status

V&V Scientist	Beth Sundheim
V&V Date (YYYY-MM-DD)	2006.09.24
V&V Edition	1
V&V Disposition and Status	OK
V&V Charge Time	9.331

A.2 Comments