

# V&V Reference Report

## L2 ASCDS Version : 7.6.9

Observation 2921 - L2 Version 001  
Chandra X-Ray Center

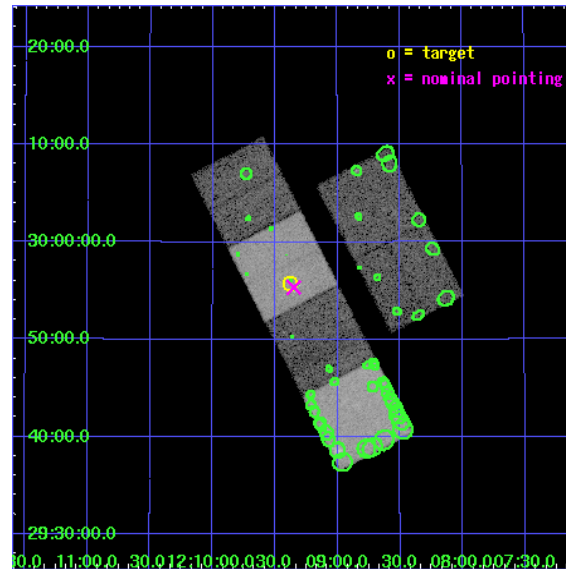
L2 Processing Date : Sep 19 2006

## Contents

<b>1</b>	<b>Front</b>	<b>2</b>
<b>2</b>	<b>OBI</b>	<b>3</b>
2.1	OBI . . . . .	3
2.1.1	Images . . . . .	3
2.1.2	Bias . . . . .	3
2.1.3	Parameters . . . . .	4
2.1.4	Events . . . . .	4
2.2	Compared Parameters . . . . .	5
2.3	Aspect . . . . .	6
2.4	Star Slots . . . . .	9
2.4.1	Slot 3 . . . . .	9
2.4.2	Slot 4 . . . . .	10
2.4.3	Slot 5 . . . . .	11
2.4.4	Slot 6 . . . . .	12
2.4.5	Slot 7 . . . . .	13
2.5	FID Slots . . . . .	14
2.5.1	Slot 0 . . . . .	14
2.5.2	Slot 1 . . . . .	15
2.5.3	Slot 2 . . . . .	16
<b>3</b>	<b>Point Sources</b>	<b>17</b>
<b>A</b>	<b>Summary</b>	<b>18</b>
A.1	Status . . . . .	18
A.2	Comments . . . . .	18

# 1 Front

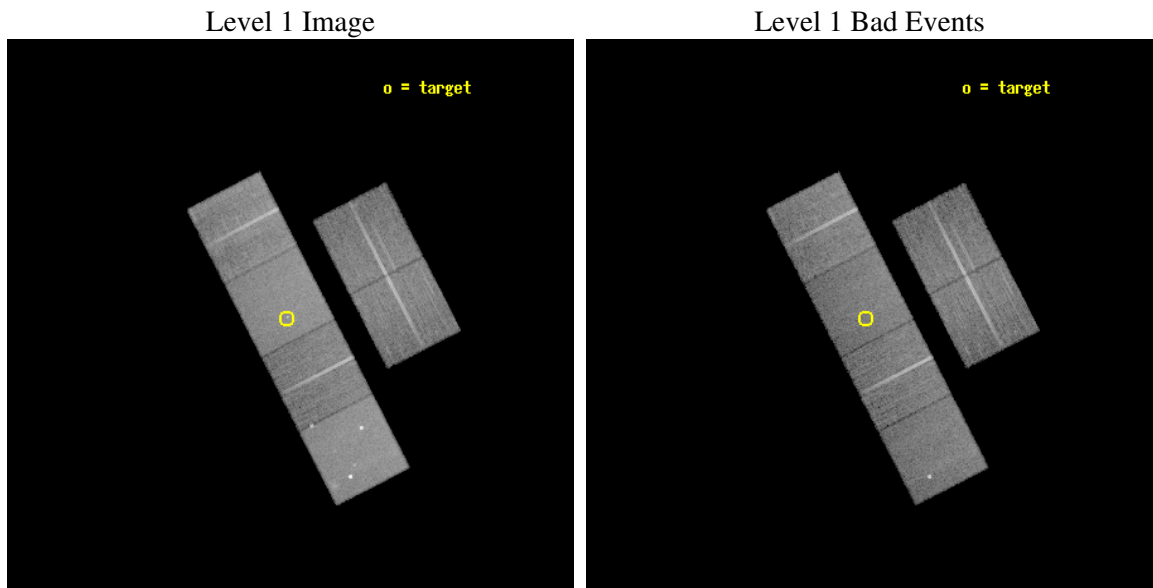
seq_num	600258
obs_id	2921
title	FURTHER PROBING THE NATURE OF SUPER-LUMINOUS X-RAY SOURCES IN NEARBY GALAXIES
observer	Dr Timothy Roberts
object	NGC 4136 X-1
dtcycle	0
cycle	P
ra_targ	182.344167
dec_targ	29.930278
ra_nom	182.33739743435
dec_nom	29.92254755912
roll_nom	242.80768319428
revision	2
ontime	19961.599925637
livetime	19708.834127946
ontime2	19961.599925637
ontime3	19961.599925637
ontime5	19961.599925637
ontime6	19961.599925637
ontime7	19961.599925637
ontime8	19961.599925637
l2events	191761



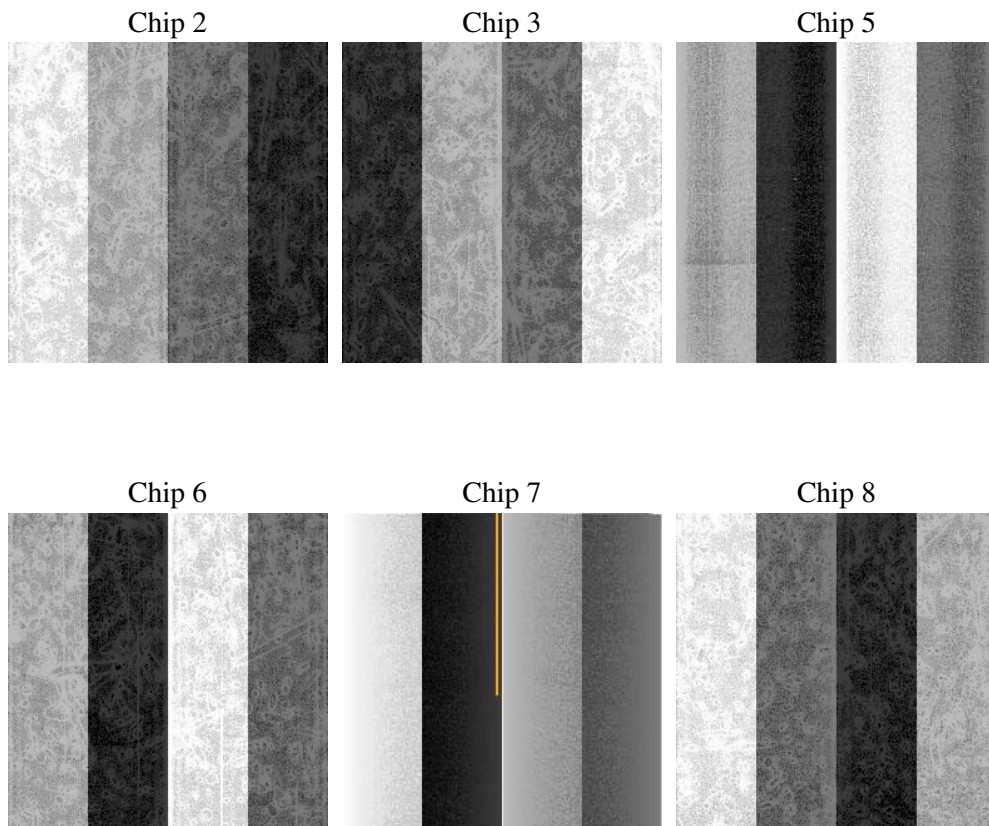
## 2 OBI

### 2.1 OBI

#### 2.1.1 Images



#### 2.1.2 Bias



### 2.1.3 Parameters

obi_num	1
ascdsver	7.6.9
caldsver	3.2.3
date	2006-09-19T08:57:50
revision	2

sched_exp_time	20000.000000
ontime	19964.561336547
ontime2	19964.561336547
ontime3	19964.561336547
ontime5	19964.561336547
ontime6	19964.561336547
ontime7	19964.561336547
ontime8	19964.561336547
l1events	900299

### 2.1.4 Events

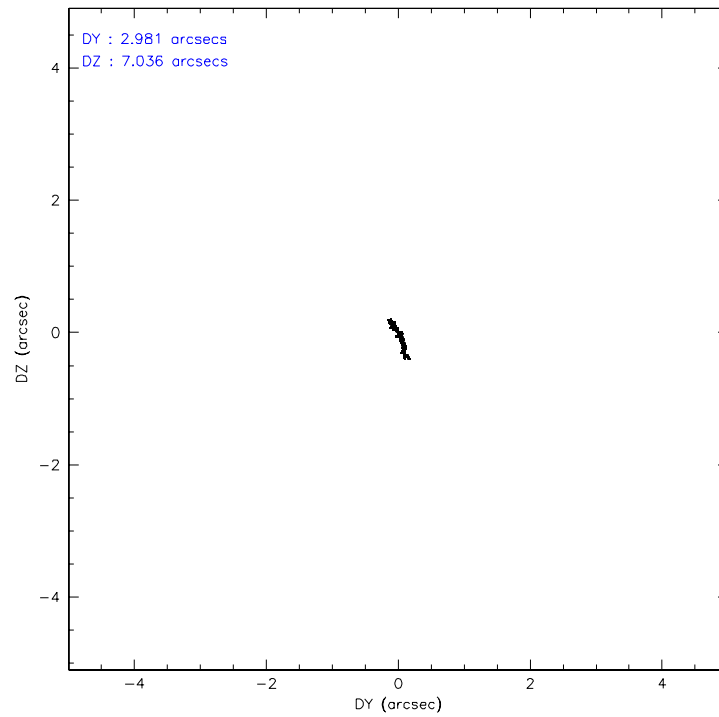
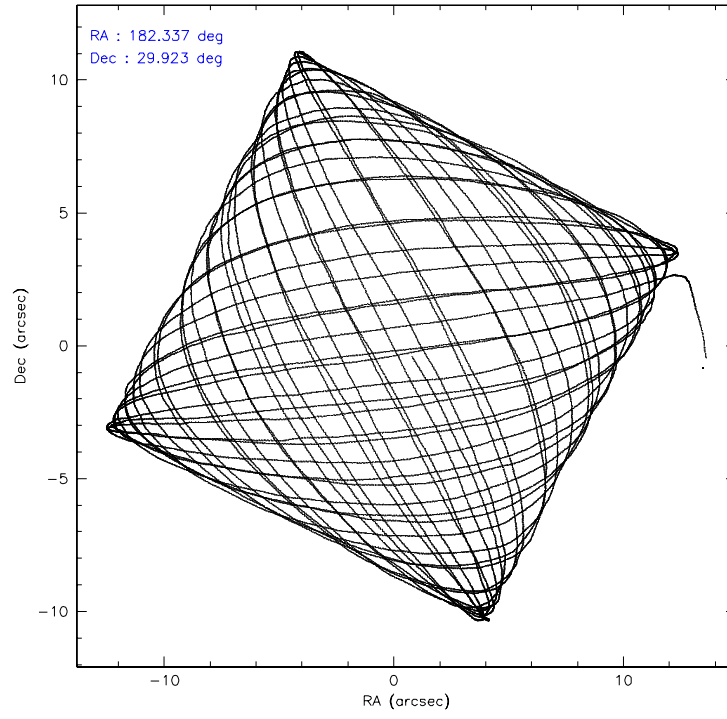
	ccd 2	ccd 3	ccd 5	ccd 6	ccd 7	ccd 8
level 1 events	131216	122017	188608	128968	168136	161354
rejected events	116506	107702	103846	114076	104043	127866
rejected %	88%	88%	55%	88%	61%	79%

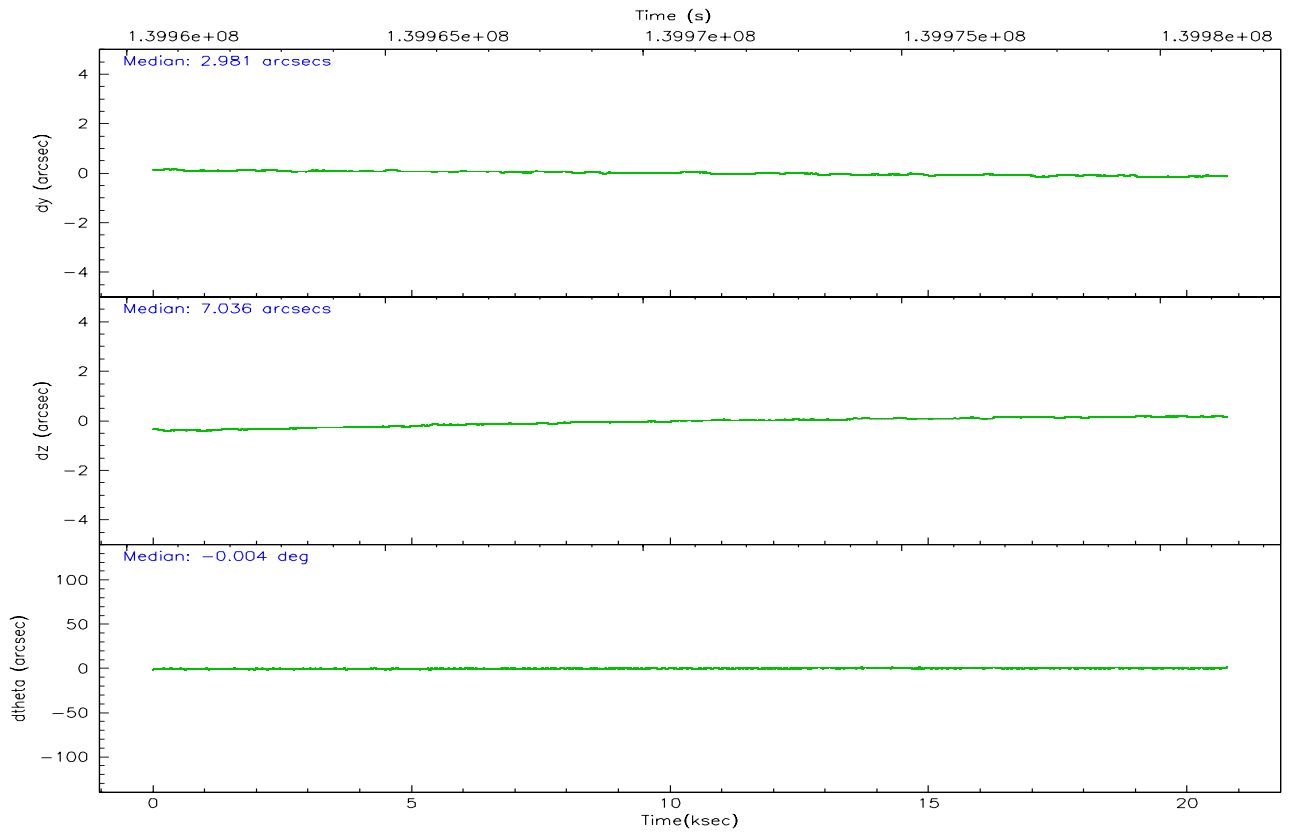
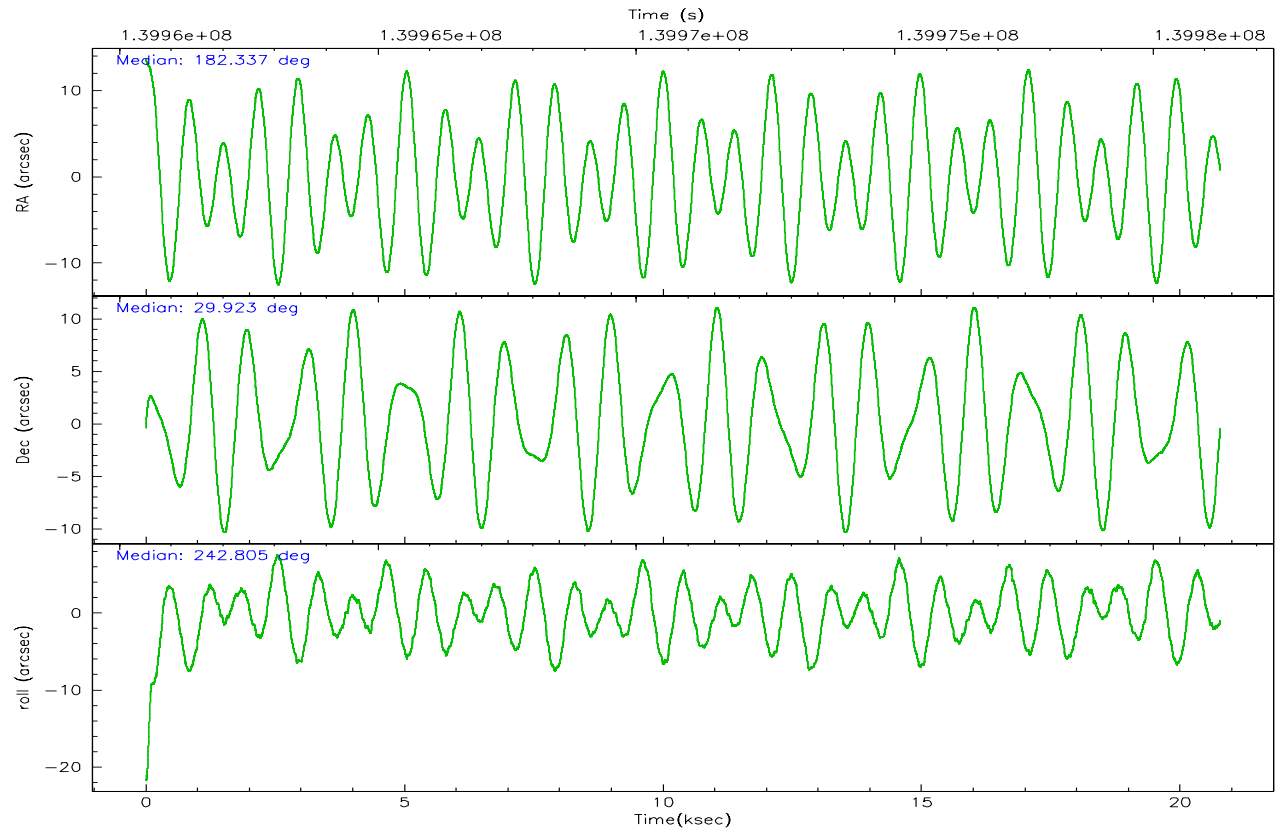
	ccd 2	ccd 3	ccd 5	ccd 6	ccd 7	ccd 8
grade 0 events	6150	5942	8198	5895	4001	10216
	4%	4%	4%	4%	2%	6%
grade 1 events	56	55	154	62	110	87
	0%	0%	0%	0%	0%	0%
grade 2 events	3181	2973	26287	3037	15720	7286
	2%	2%	13%	2%	9%	4%
grade 3 events	1361	1377	2190	1555	3363	3567
	1%	1%	1%	1%	2%	2%
grade 4 events	1347	1405	1815	1418	3320	3427
	1%	1%	0%	1%	1%	2%
grade 5 events	4603	5078	9754	5596	11111	7071
	3%	4%	5%	4%	6%	4%
grade 6 events	2675	2621	46287	2989	37697	8995
	2%	2%	24%	2%	22%	5%
grade 7 events	111843	102566	93923	108416	92814	120705
	85%	84%	49%	84%	55%	74%

## 2.2 Compared Parameters

Parameter	Planned	Actual	Parameter	Planned	Actual
Instrument	ACIS	ACIS	Obspar format version number	6	6
Detector	ACIS-235678	ACIS-235678	Obspar file type	PREDICTED	ACTUAL
Grating	NONE	NONE	Obspar update status	NONE	UPDATED
Data mode	FAINT	FAINT	Number of optional ACIS chips dropped	0	0
Observation mode	POINTING	POINTING	On-chip summing requested	N	N
Pointing RA	182.335441	182.3373974343472	Subarray requested	NONE	NONE
Pointing Dec	29.949761	29.92254755911976	Alternating exposures requested	N	N
Pointing Roll	242.652031	242.8076831942838	Primary exposure time	0.000000	3.2
SIM focus pos (mm)	-0.684267	-0.6828225247311905			
SIM defocus (mm)	0	0.001444936568705701			
SIM translation stage pos (mm)	-190.132523	-190.1400660498719			
SIM translation stage offset (mm)	0	0.00754346686406393			
Observation start time	139961290.184000	139960038.41832			
Observation start date	2002-06-08T22:07:06	2002-06-08T21:47:18			
Observation end time	139981290.184000	139981819.66921			
Observation end date	2002-06-09T03:40:26	2002-06-09T03:50:19			
Read mode	TIMED	TIMED			

## 2.3 Aspect





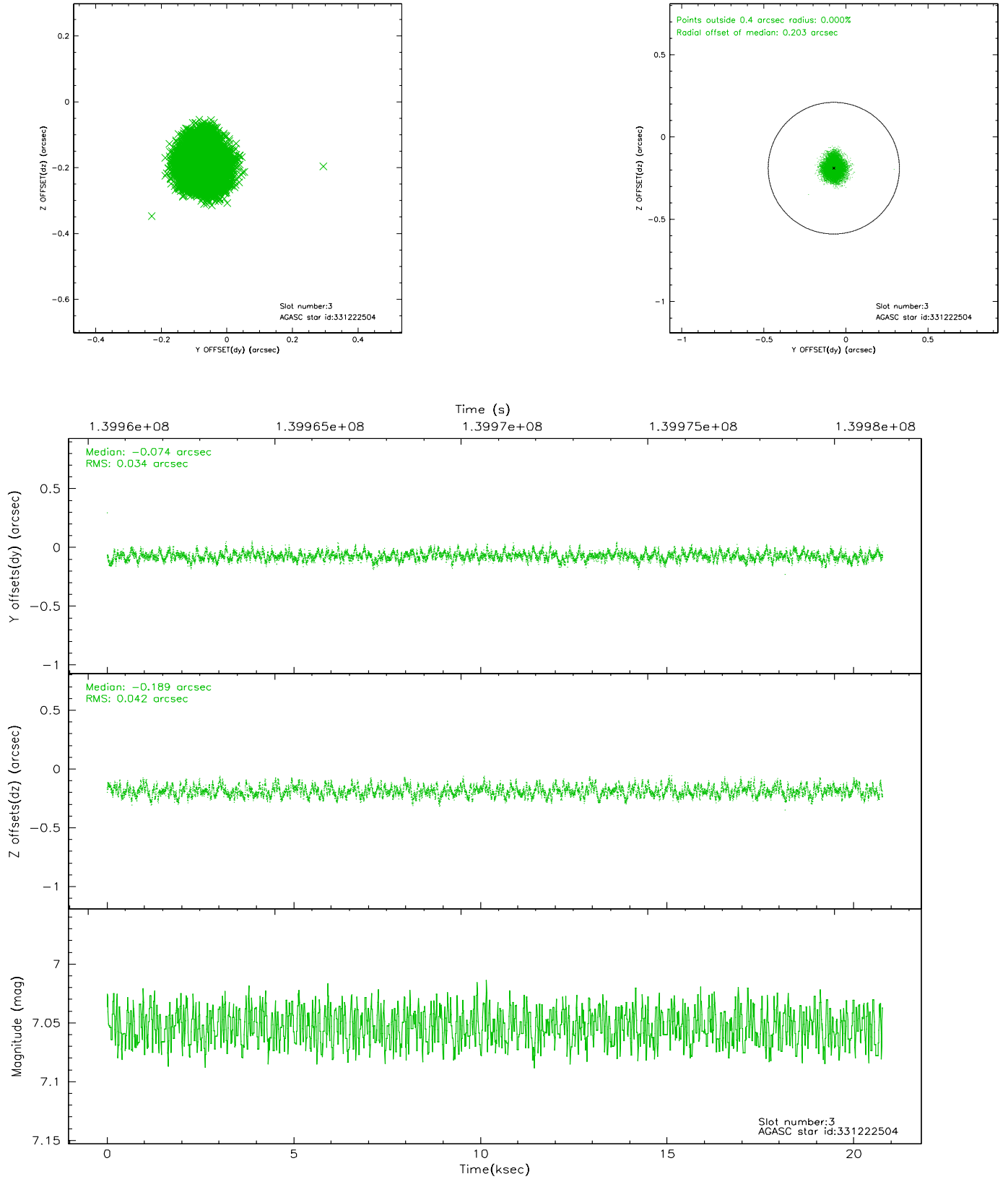
### Slot Statistics

slot	status	id	mag	n_pts	med_dy	med_dz	dr1	dr2	ra	dec	mean_y	mean_z
0	FID	ACIS-S-2	7.11	5068	0.018	0.026	0.009	0.017	0.000000	0.000000	-755.60	-1728.13
1	FID	ACIS-S-4	7.20	5067	-0.035	-0.008	0.007	0.012	0.000000	0.000000	2157.54	180.15
2	FID	ACIS-S-6	7.35	5067	-0.010	-0.011	0.008	0.013	0.000000	0.000000	406.57	817.73
3	GUIDE	331222504	7.05	10135	-0.074	-0.189	0.060	0.092	182.064211	30.275360	-654.61	-1288.06
4	GUIDE	260580432	7.38	10136	0.203	0.202	0.046	0.076	182.615916	29.068189	2412.70	2241.81
5	GUIDE	260576048	7.87	10135	0.088	-0.081	0.052	0.082	182.340266	29.460601	1557.53	822.77
6	GUIDE	331223656	9.35	10129	-0.095	0.053	0.091	0.144	182.518902	30.395784	-1688.20	-231.69
7	GUIDE	260571904	9.47	10125	-0.114	0.014	0.122	0.196	183.167466	29.996113	-1348.31	2223.08

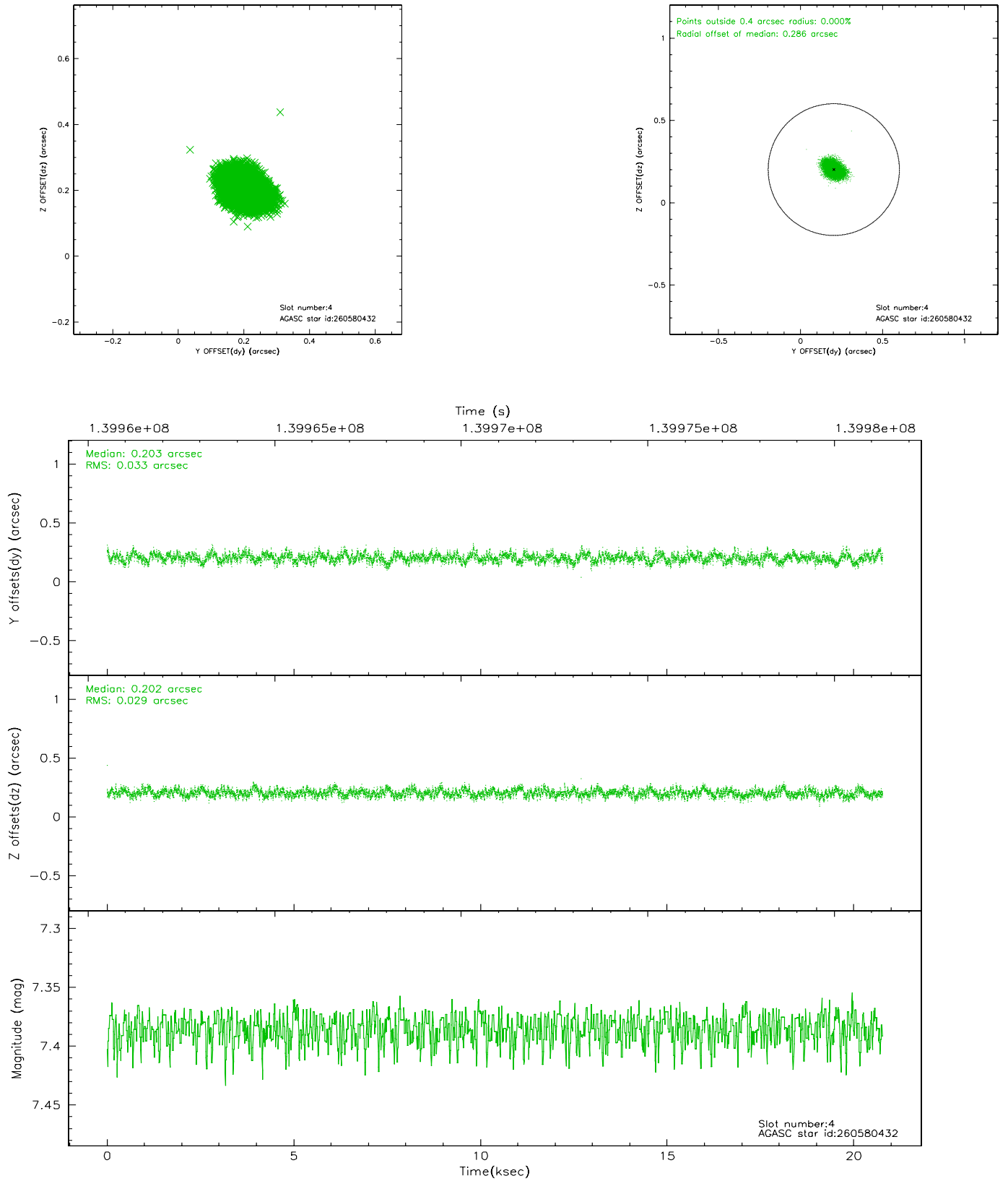


## 2.4 Star Slots

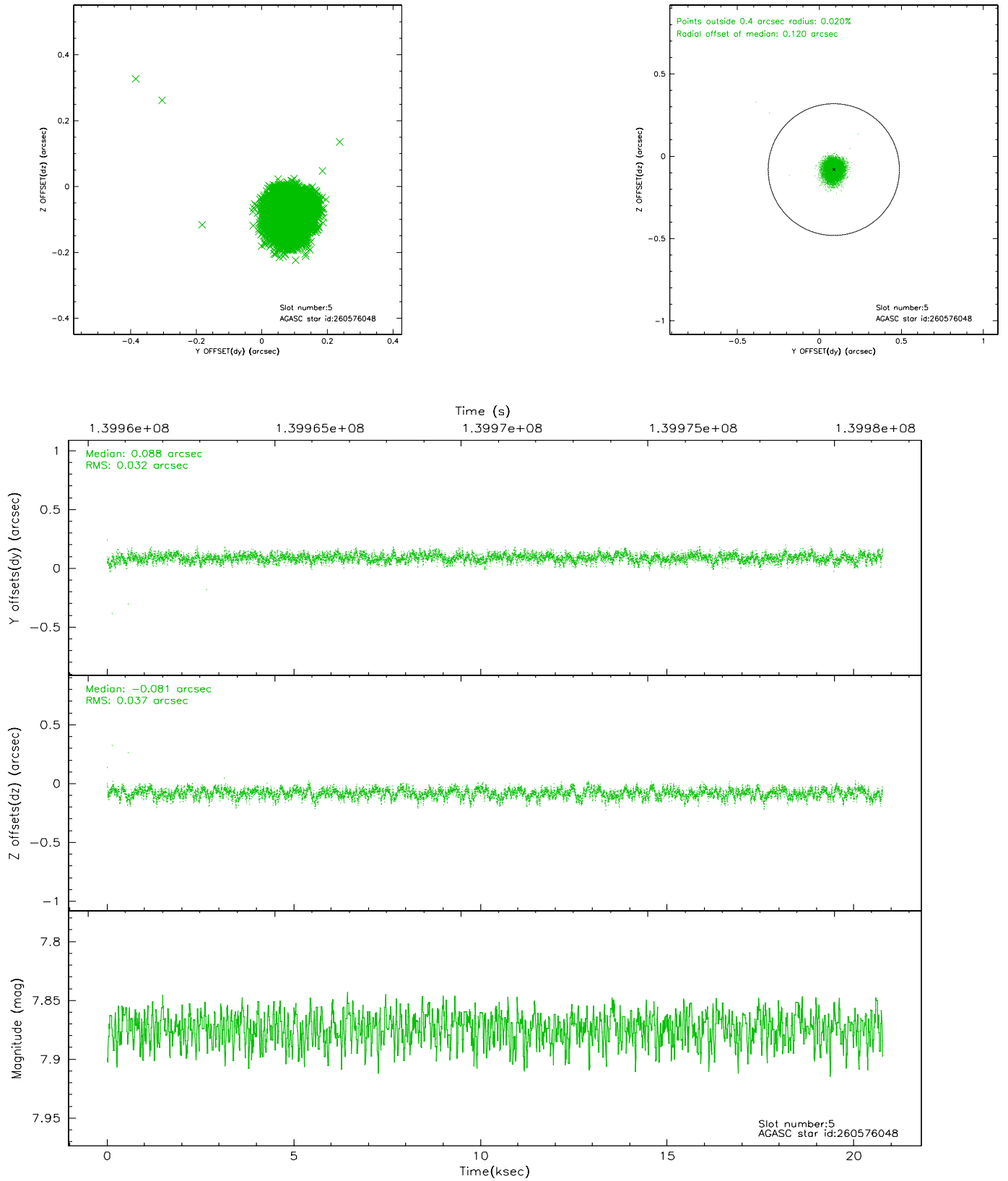
### 2.4.1 Slot 3



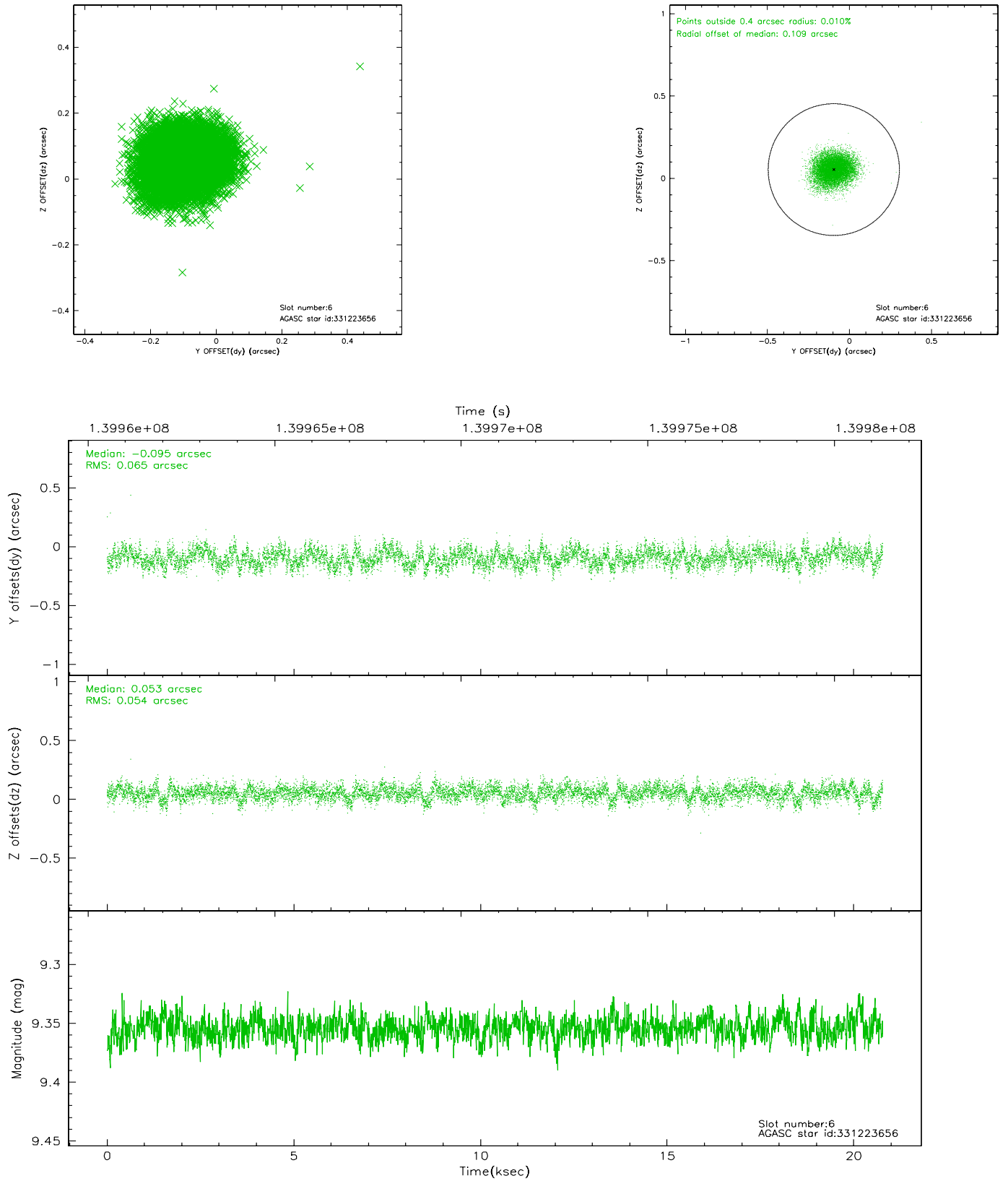
## 2.4.2 Slot 4



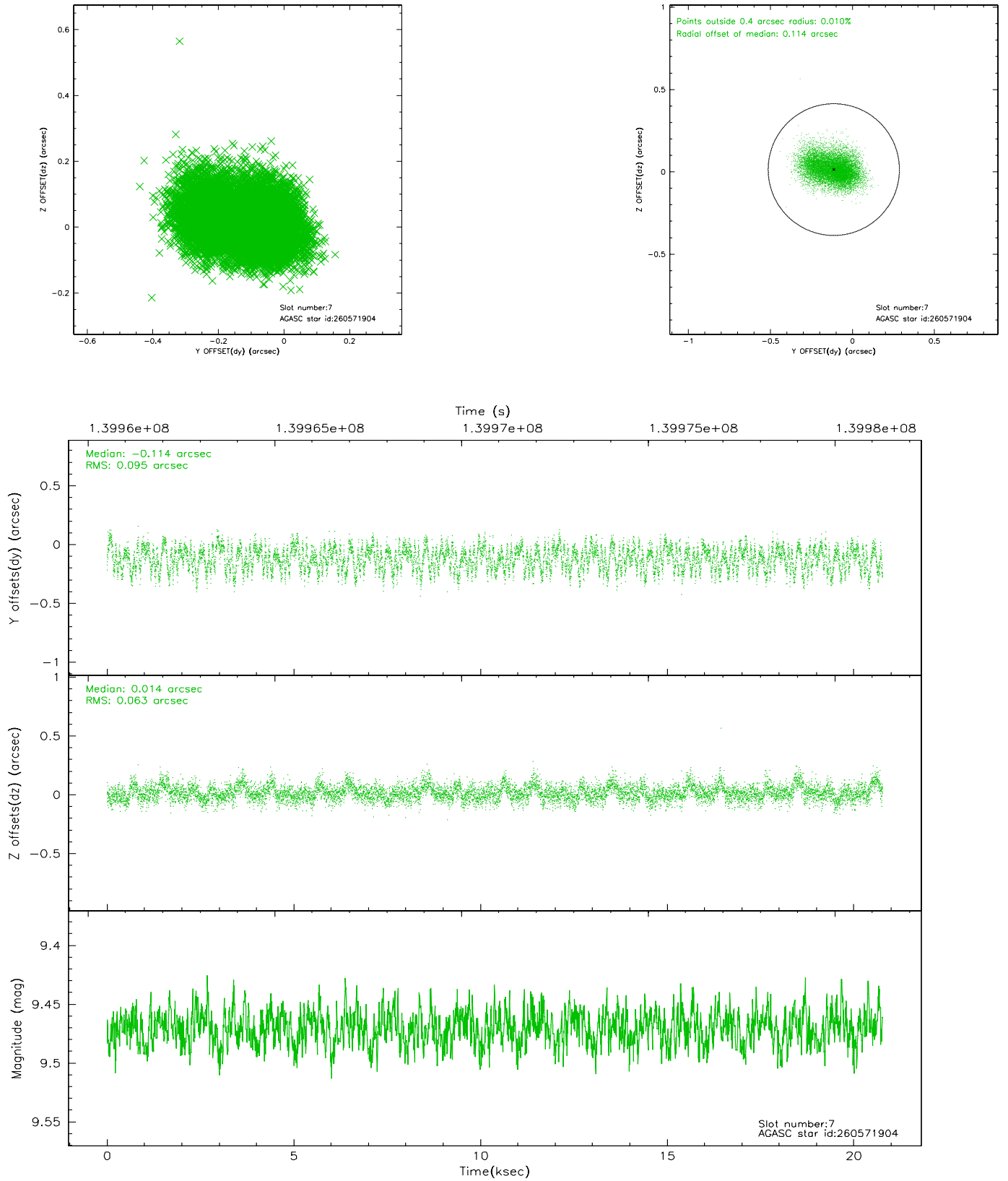
### 2.4.3 Slot 5



## 2.4.4 Slot 6

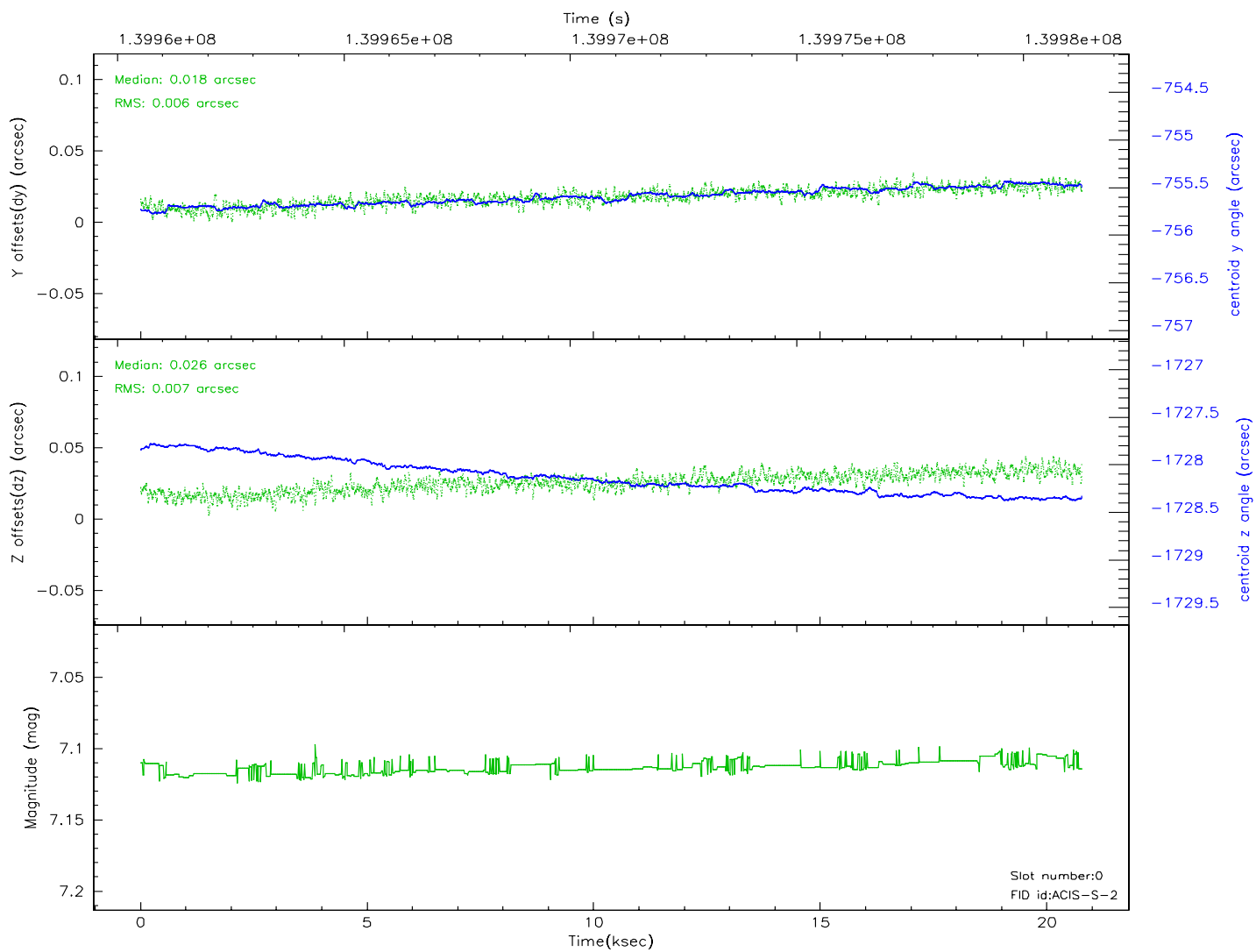
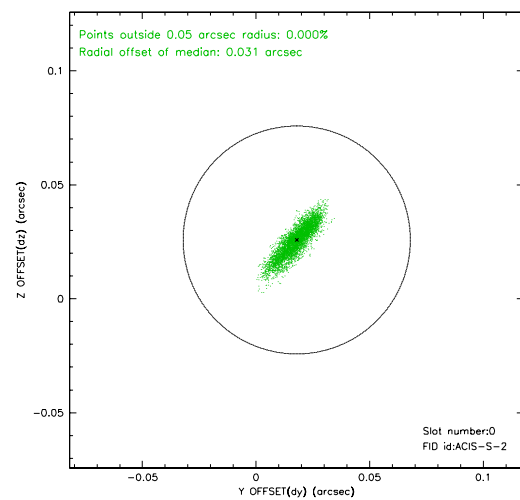
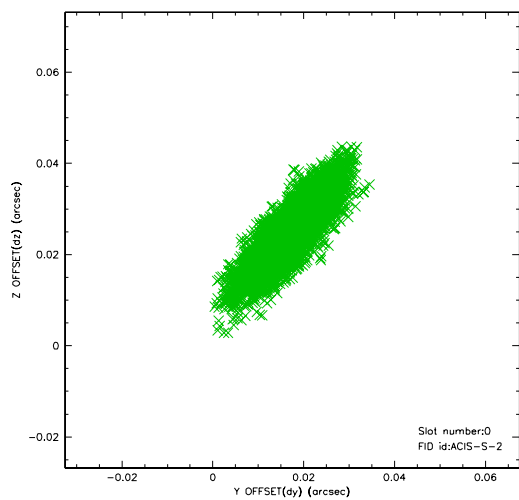


## 2.4.5 Slot 7

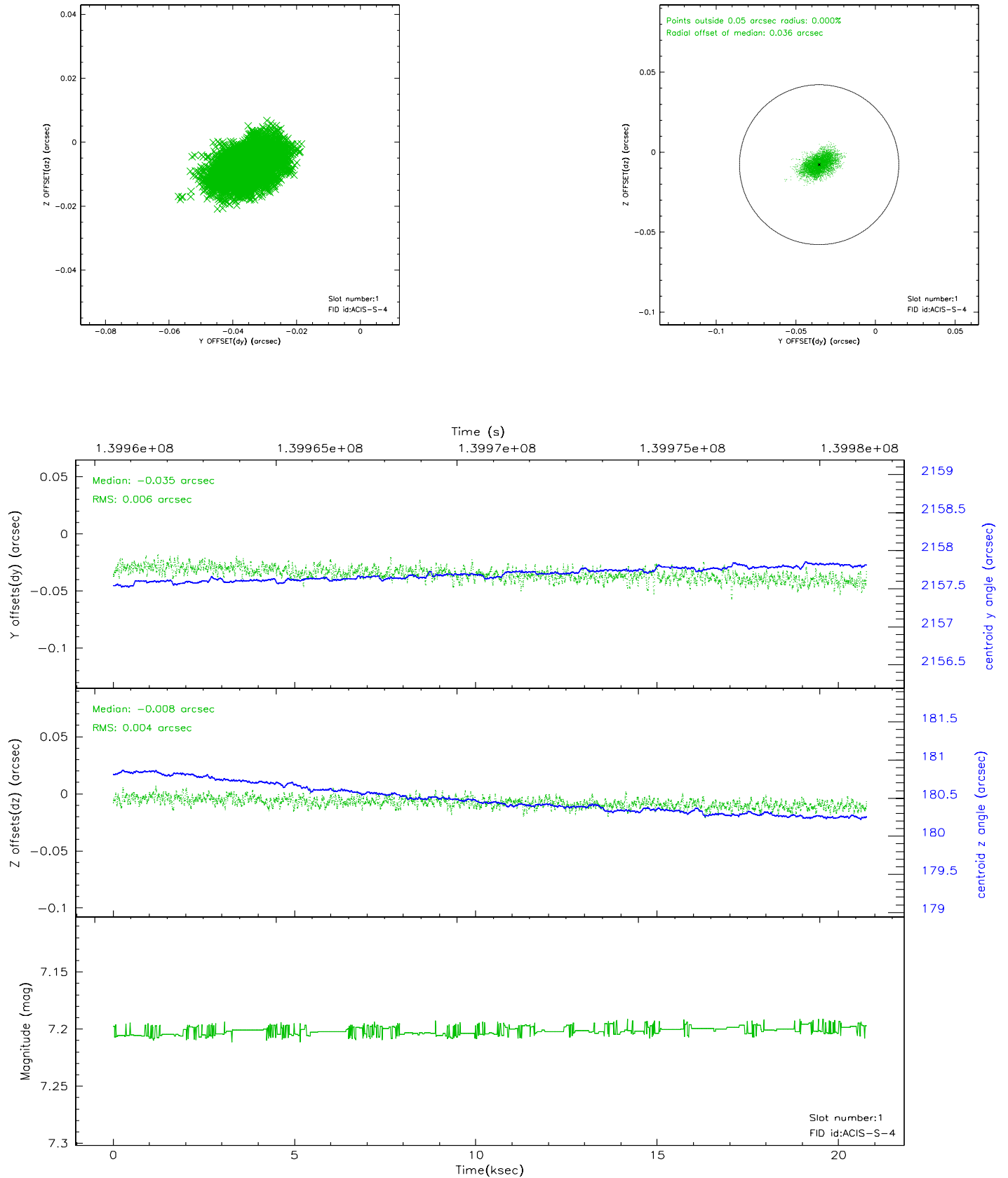


## 2.5 FID Slots

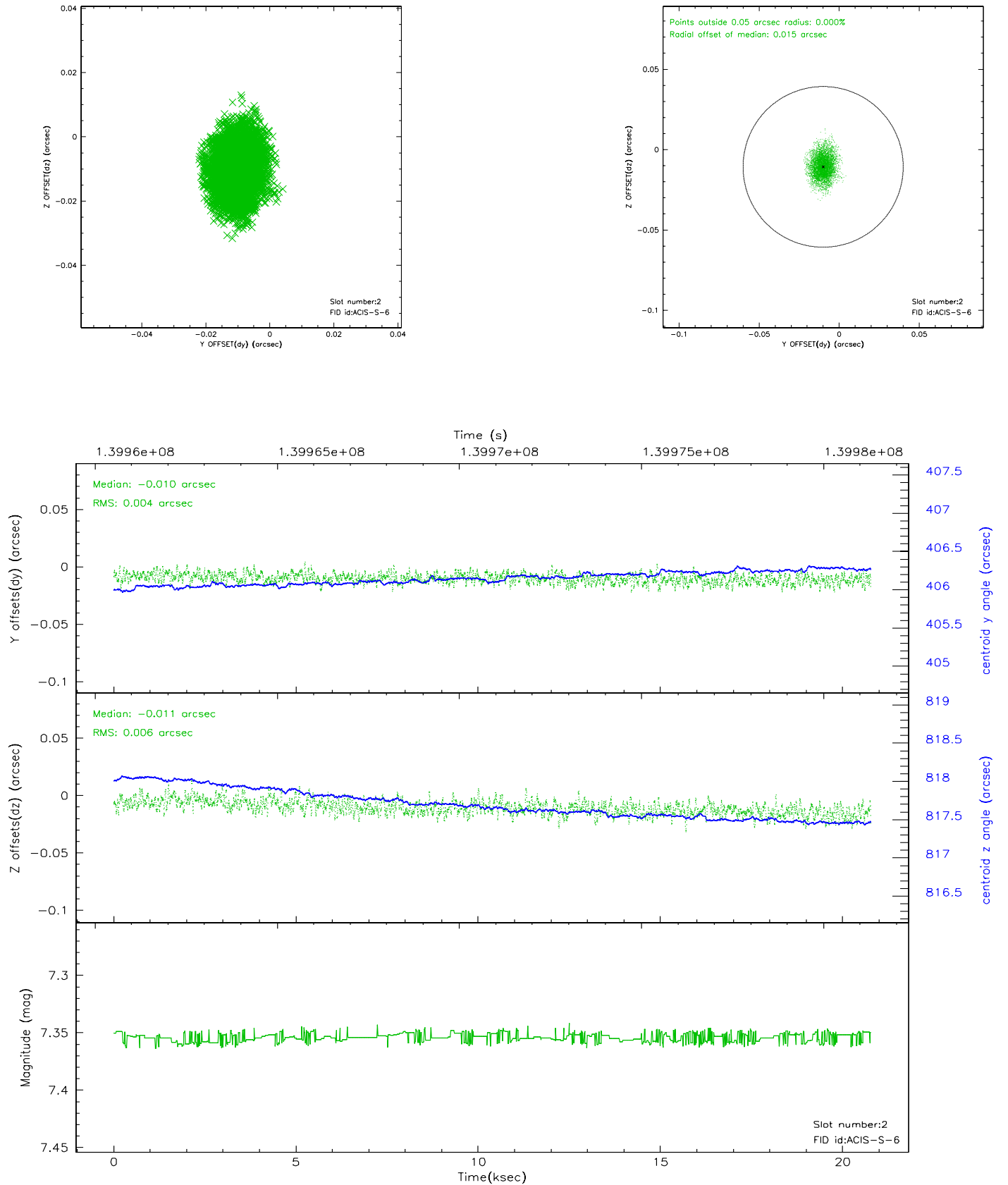
### 2.5.1 Slot 0



## 2.5.2 Slot 1

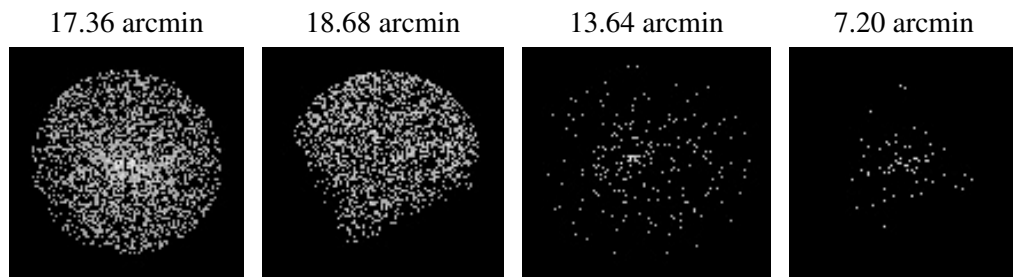


### 2.5.3 Slot 2





### 3 Point Sources



## A Summary

### A.1 Status

V&V Scientist	Jen Lauer
V&V Date (YYYY-MM-DD)	2006.09.19
V&V Edition	1
V&V Disposition and Status	OK
V&V Charge Time	19.961

### A.2 Comments

Monitor constraint met.