

V&V Reference Report

L2 ASCDS Version : 8.4.5

Observation 2917 - L2 Version 3
Chandra X-Ray Center

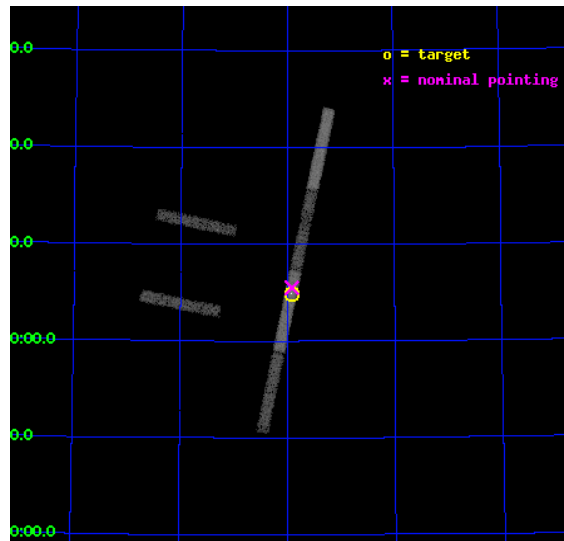
L2 Processing Date : Oct 13 2012

Contents

1	Front	2
2	OBI	3
2.1	OBI	3
2.1.1	Images	3
2.1.2	Bias	3
2.1.3	Parameters	4
2.1.4	Events	4
2.2	Compared Parameters	5
2.3	Aspect	6
2.4	Star Slots	9
2.4.1	Slot 3	9
2.4.2	Slot 4	10
2.4.3	Slot 5	11
2.4.4	Slot 6	12
2.4.5	Slot 7	13
2.5	FID Slots	14
2.5.1	Slot 0	14
2.5.2	Slot 1	15
2.5.3	Slot 2	16
A	Summary	17
A.1	Status	17
A.2	Comments	17

1 Front

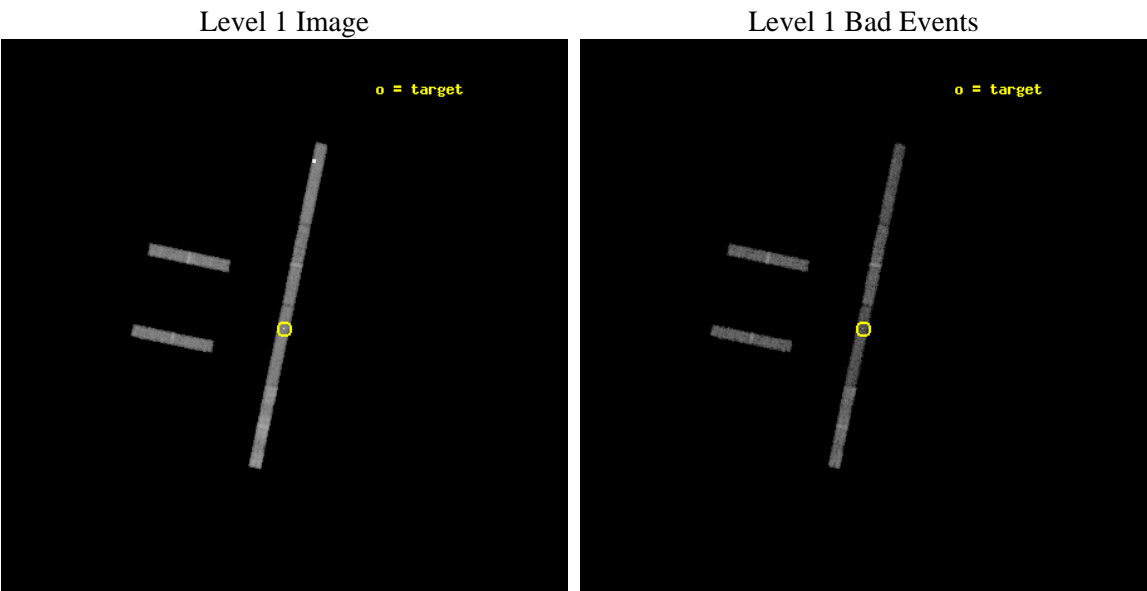
seq_num	600254	Sequence number
obs_id	2917	Observation id
title	FURTHER PROBING THE NATURE OF SUPER-LUMINOUS X-RAY SOURCES IN NEARBY GALAXIES	Proposal title
observer	Dr Timothy Roberts	Principal investigator
object	IC 342 X-1	Source name
dtcycle	0	
cycle	P	events from which exps? Prim/Second/Both
ra_targ	56.48	Observer's specified target RA [deg]
dec_targ	68.082222	Observer's specified target Dec [deg]
ra_nom	56.47932478437	Nominal RA [deg]
dec_nom	68.091898601593	Nominal Dec [deg]
roll_nom	101.83107447799	Nominal Roll [deg]
revision	3	Processing version of data
ontime	10512.598104805	Sum of GTIs [s]
livetime	9930.3933301351	Livetime [s]
ontime2	10512.599820971	Sum of GTIs [s]
ontime3	10512.474984795	Sum of GTIs [s]
ontime5	10512.557064801	Sum of GTIs [s]
ontime6	10512.516024798	Sum of GTIs [s]
ontime7	10512.598104805	Sum of GTIs [s]
ontime8	10512.433944821	Sum of GTIs [s]
l2events	21699	Number of level 2 events



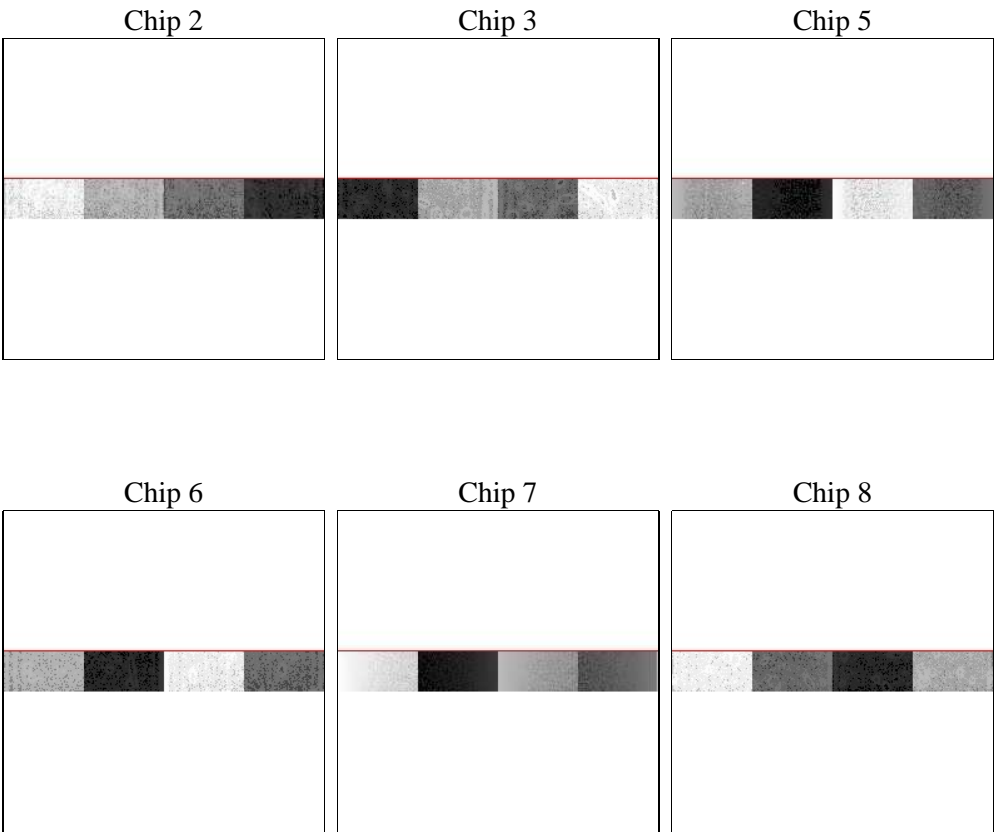
2 OBI

2.1 OBI

2.1.1 Images



2.1.2 Bias



Chip 6



Chip 7



Chip 8



2.1.3 Parameters

obi_num	2	Obi number	sched_exp_time	10000.000000	[s] Scheduled observation exposure time
ascdsver	8.4.5	Processing system revision	ontime	10512.598104805	Sum of GTIs [s]
caldsver	4.5.2	 	ontime2	10512.599820971	Sum of GTIs [s]
date	2012-10-14T00:40:23	Date and time of file creation	ontime3	10512.474984795	Sum of GTIs [s]
revision	3	Processing version of data	ontime5	10512.557064801	Sum of GTIs [s]
			ontime6	10512.516024798	Sum of GTIs [s]
			ontime7	10512.598104805	Sum of GTIs [s]
			ontime8	10512.433944821	Sum of GTIs [s]
			l1events	106120	Number of level 1 events

2.1.4 Events

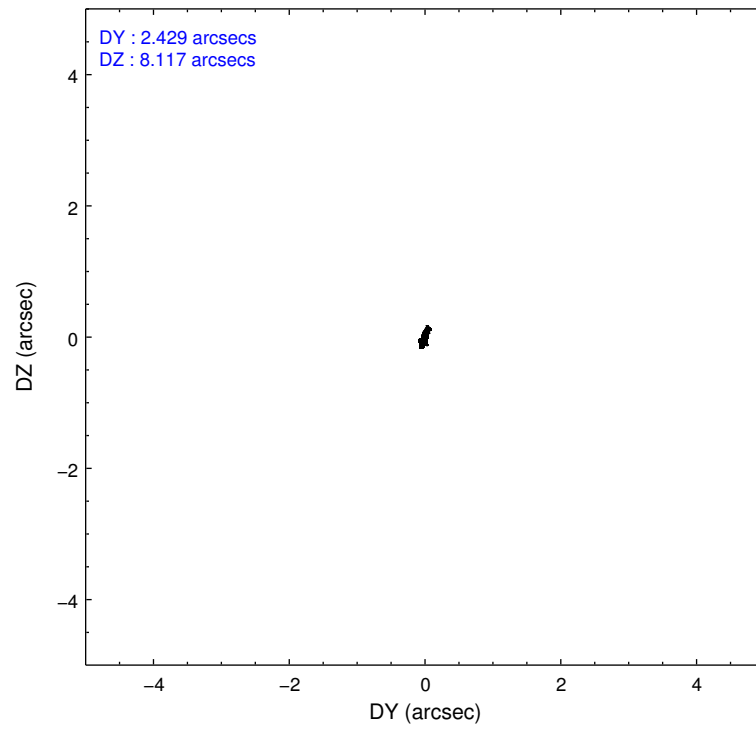
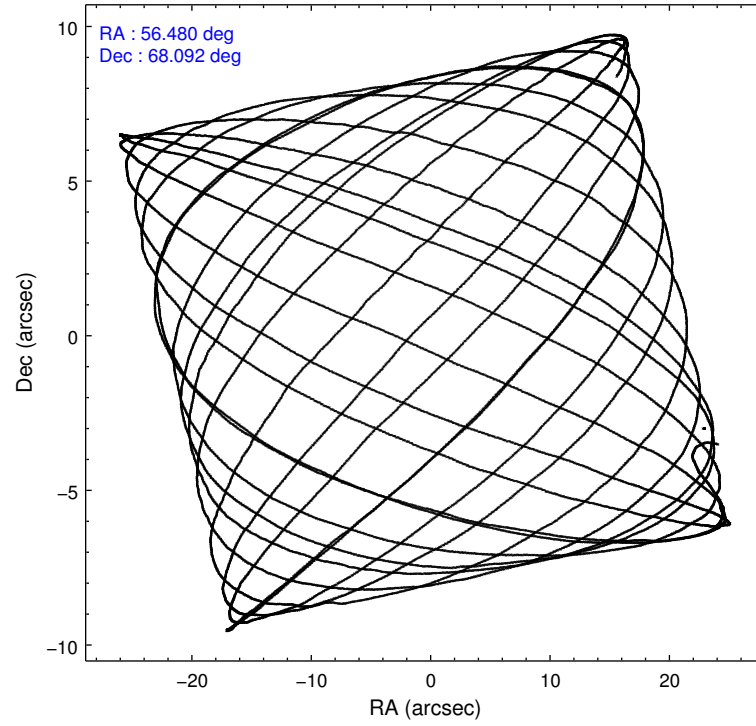
	ccd 2	ccd 3	ccd 5	ccd 6	ccd 7	ccd 8
level 1 events	13990	12477	26942	12962	15425	24324
rejected events	11804	10512	7119	10795	6874	14733
rejected %	84%	84%	26%	83%	44%	60%

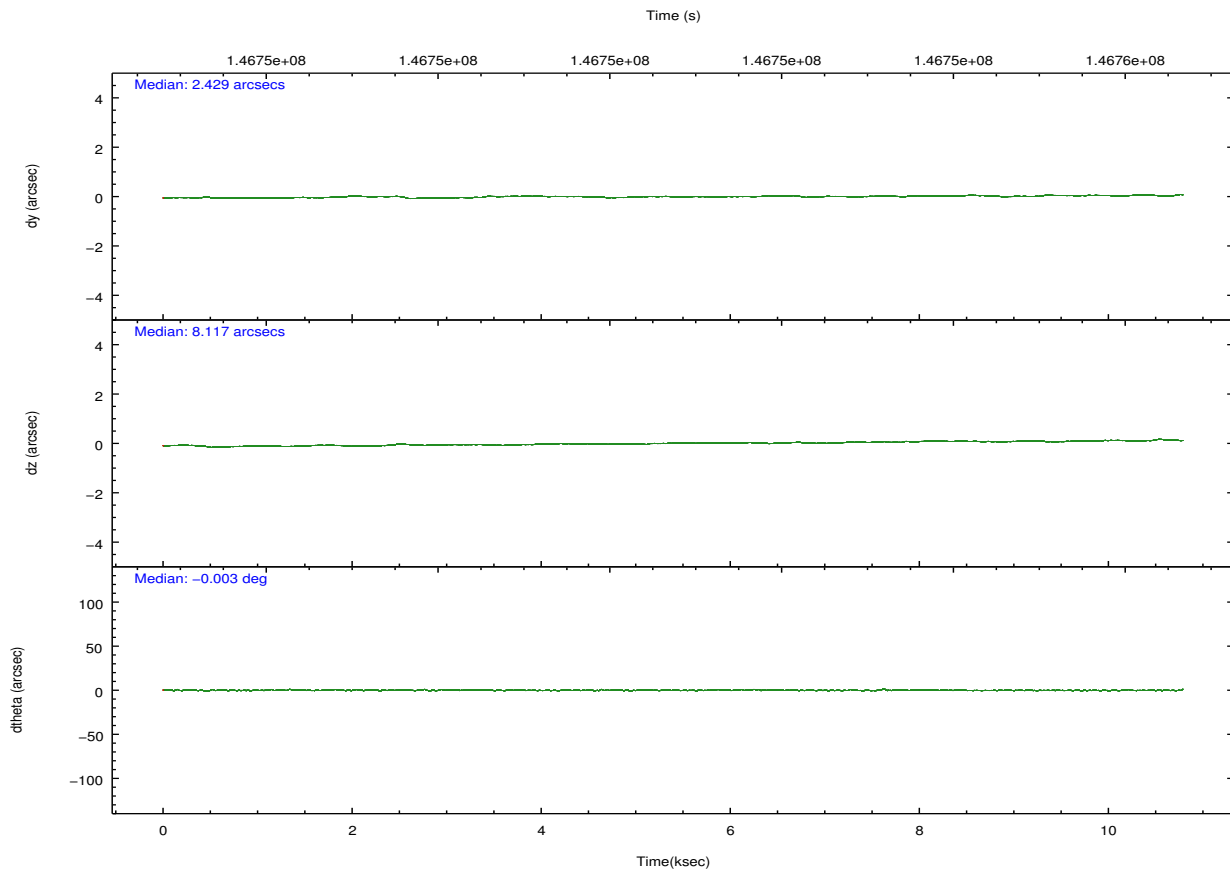
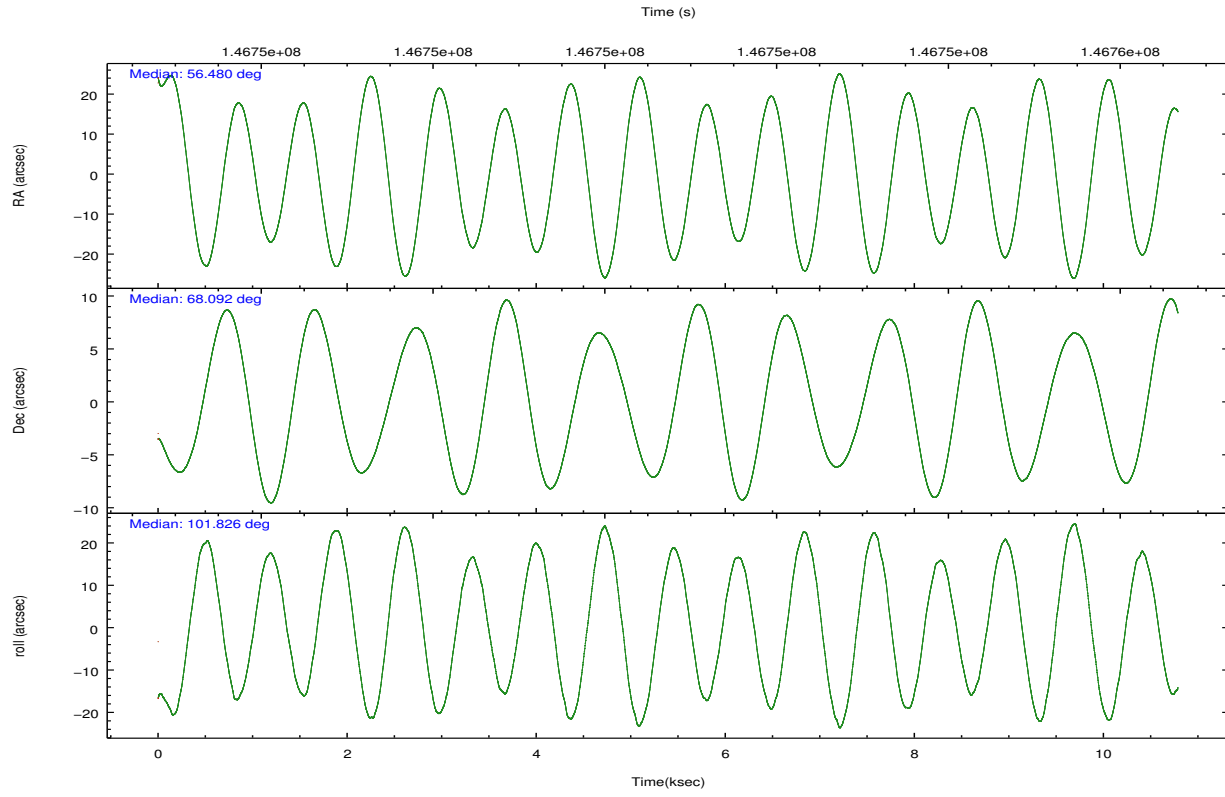
	ccd 2	ccd 3	ccd 5	ccd 6	ccd 7	ccd 8
grade 0 events	956	755	9685	830	1331	2915
	6%	6%	35%	6%	8%	11%
grade 1 events	3	5	50	1	30	19
	0%	0%	0%	0%	0%	0%
grade 2 events	443	458	6070	546	1875	1675
	3%	3%	22%	4%	12%	6%
grade 3 events	207	199	485	222	914	1330
	1%	1%	1%	1%	5%	5%
grade 4 events	218	190	538	205	932	1198
	1%	1%	1%	1%	6%	4%
grade 5 events	334	328	1155	357	1171	518
	2%	2%	4%	2%	7%	2%
grade 6 events	362	363	3048	364	3500	2473
	2%	2%	11%	2%	22%	10%
grade 7 events	11467	10179	5911	10437	5672	14196
	81%	81%	21%	80%	36%	58%

2.2 Compared Parameters

Parameter	Planned	Actual	Parameter	Planned	Actual
Instrument	ACIS	ACIS	Obspar format version number	7	7
Detector	ACIS-235678	ACIS-235678	Obspar file type	PREDICTED	ACTUAL
Grating	NONE	NONE	Obspar update status	NONE	UPDATED
Data mode	FAINT	FAINT	Number of optional ACIS chips dropped	0	0
Observation mode	POINTING	POINTING	On-chip summing requested	N	N
[deg] Pointing RA	56.528582	56.47932478437046	Subarray requested	CUSTOM	1/8
[deg] Pointing Dec	68.071836	68.09189860159348	Subarray start row	449	449
[deg] Pointing Roll	101.628751	101.8310744779939	Subarray row count	128	128
[mm] SIM focus pos	-0.684267	-0.6828225247311905	Alternating exposures requested	N	N
[mm] SIM defocus	0	0.001444936568705701	[s] Primary exposure time	0.000000	0.7
[mm] SIM translation stage pos	-190.132523	-190.1400660498719			
[mm] SIM translation stage offset	0	0.00754346686406393			
[s] Observation start time (MET)	146746132.184000	146744872.44702			
Observation start date	2002-08-26T10:47:48	2002-08-26T10:27:52			
[s] Observation end time (MET)	146756132.184000	146756992.04752			
Observation end date	2002-08-26T13:34:28	2002-08-26T13:49:52			
Read mode	TIMED	TIMED			

2.3 Aspect



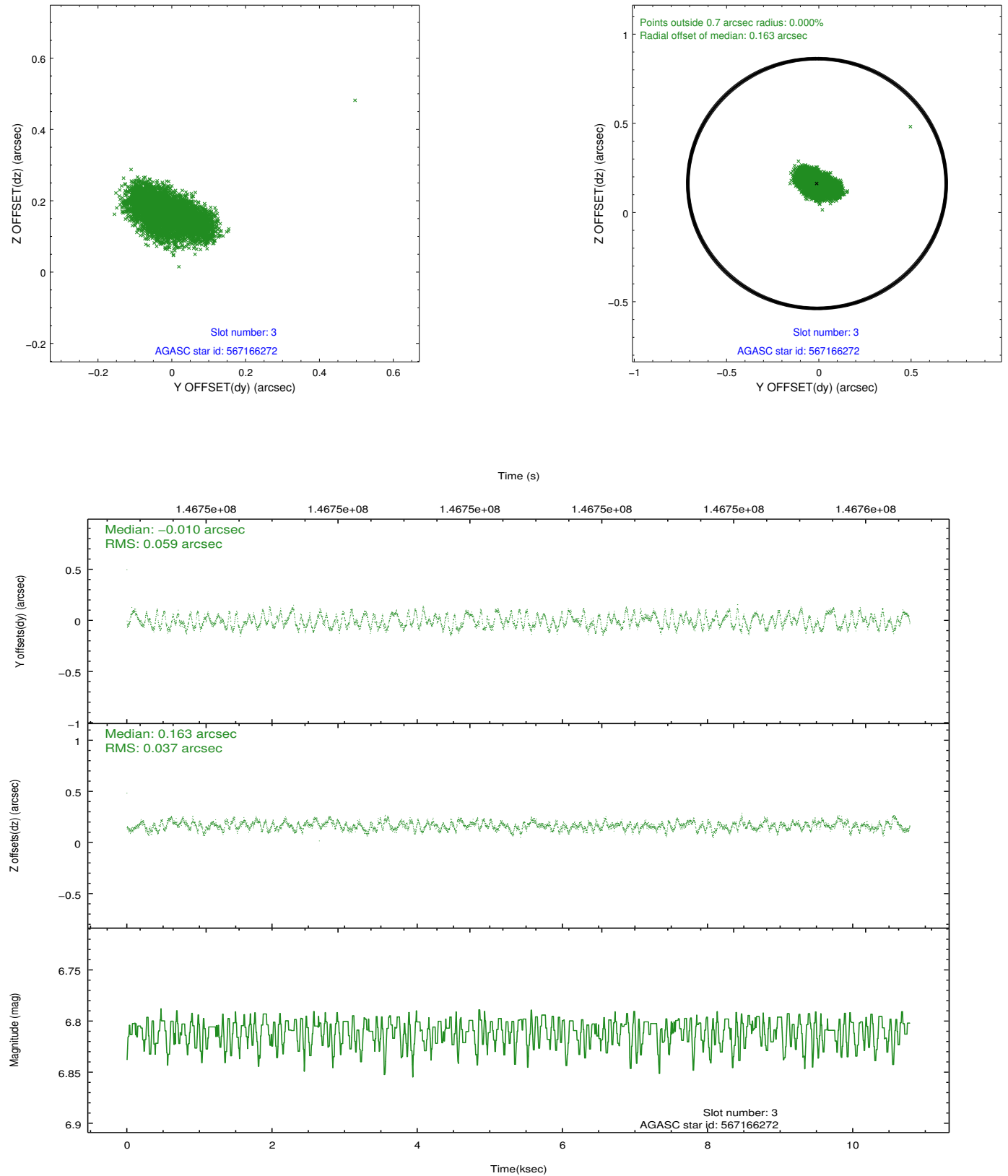


Slot Statistics

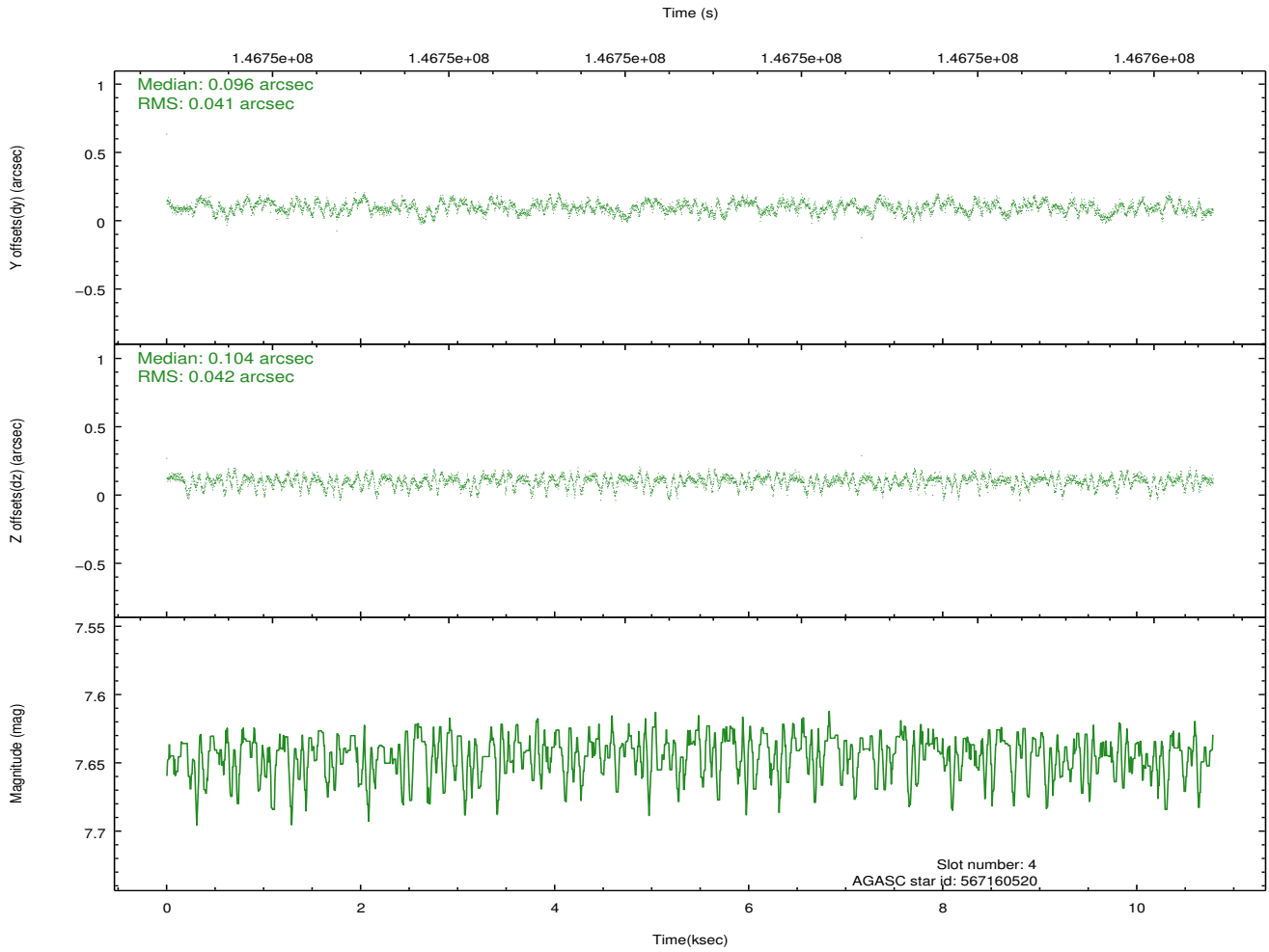
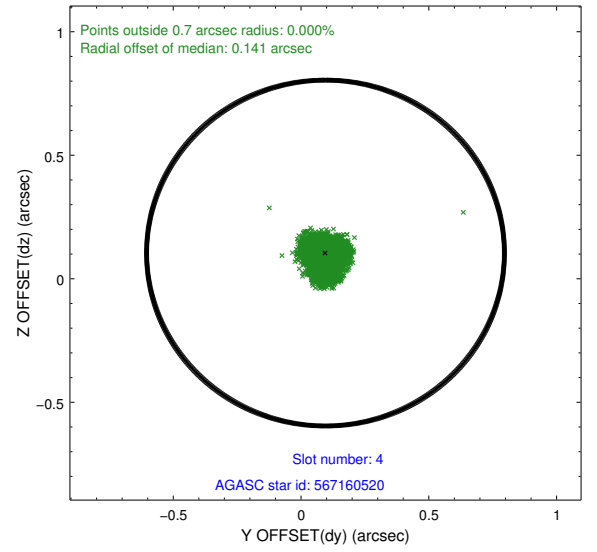
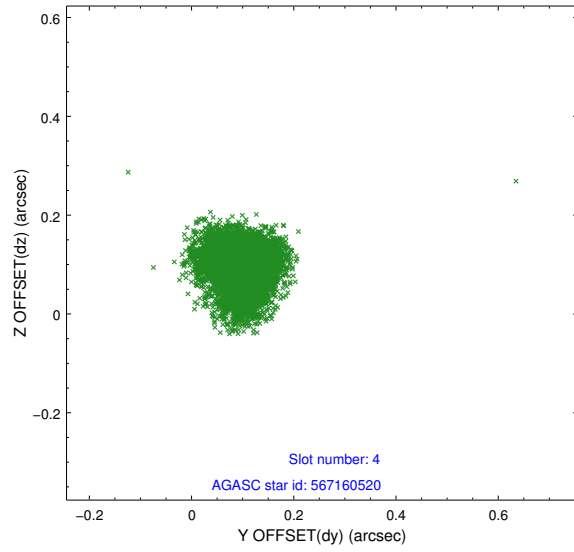
slot	status	id	mag	n_pts	med_dy	med_dz	dr1	dr2	ra	dec	mean_y	mean_z
0	FID	ACIS-S-2	7.10	2632	-0.009	0.003	0.006	0.011	0.000000	0.000000	-755.08	-1729.30
1	FID	ACIS-S-4	7.20	2632	-0.031	0.004	0.005	0.010	0.000000	0.000000	2157.98	178.66
2	FID	ACIS-S-5	7.24	2632	0.009	0.003	0.006	0.011	0.000000	0.000000	-1807.27	172.92
3	GUIDE	567166272	6.81	5263	-0.010	0.163	0.076	0.117	57.924067	68.507485	1186.96	-2121.98
4	GUIDE	567160520	7.64	5263	0.096	0.104	0.063	0.100	58.147596	67.556646	-2234.88	-1811.00
5	GUIDE	567160120	8.78	5260	0.152	0.125	0.089	0.140	58.169025	67.893534	-1046.71	-2052.70
6	GUIDE	567164688	9.00	5262	-0.206	-0.154	0.079	0.126	55.209386	68.614739	2282.29	1298.88
7	GUIDE	567167832	9.24	5259	-0.032	-0.235	0.099	0.158	54.952112	68.306287	1277.29	1880.00

2.4 Star Slots

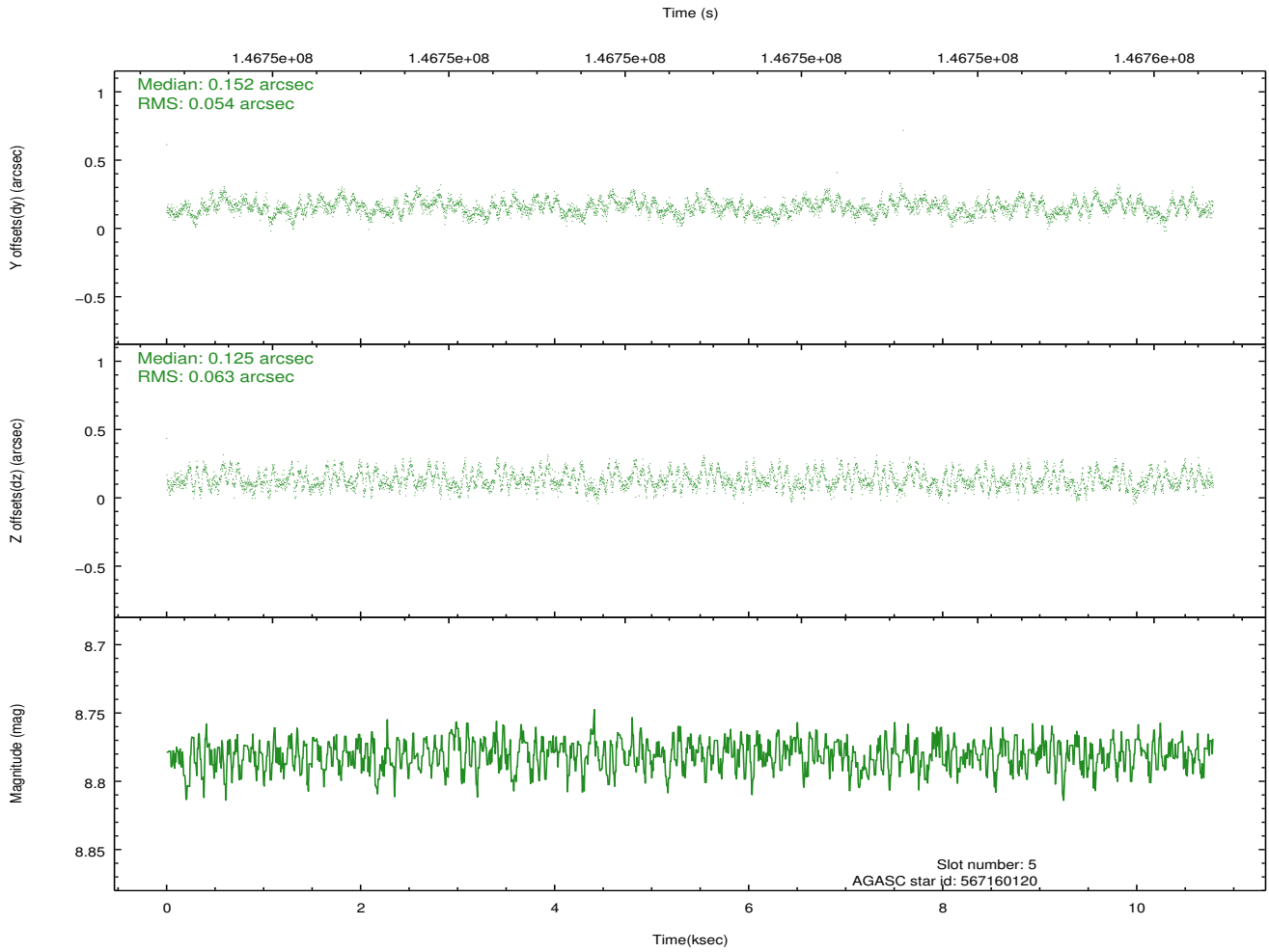
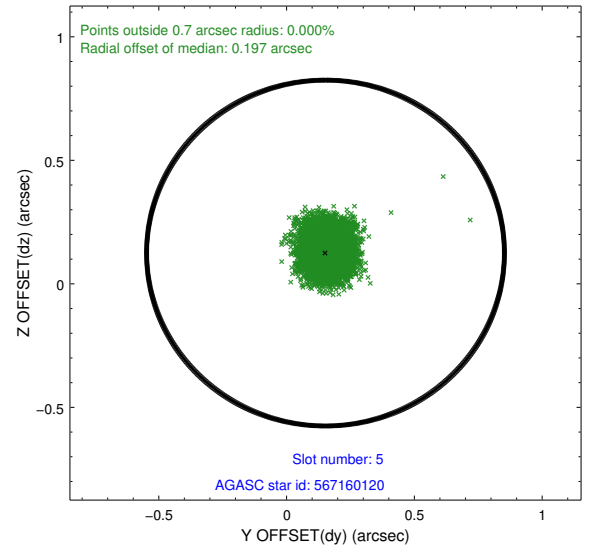
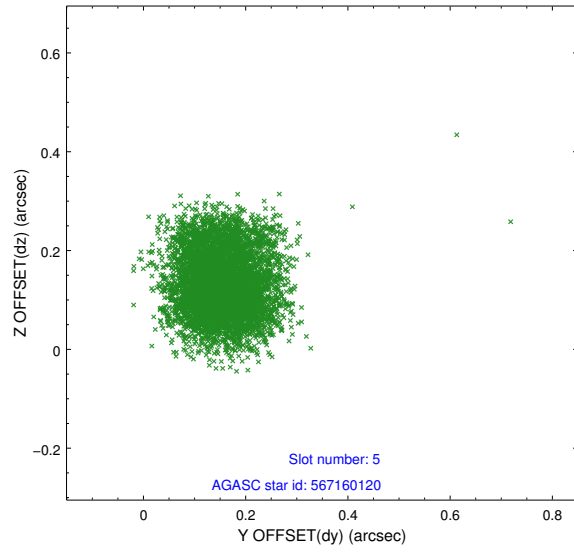
2.4.1 Slot 3



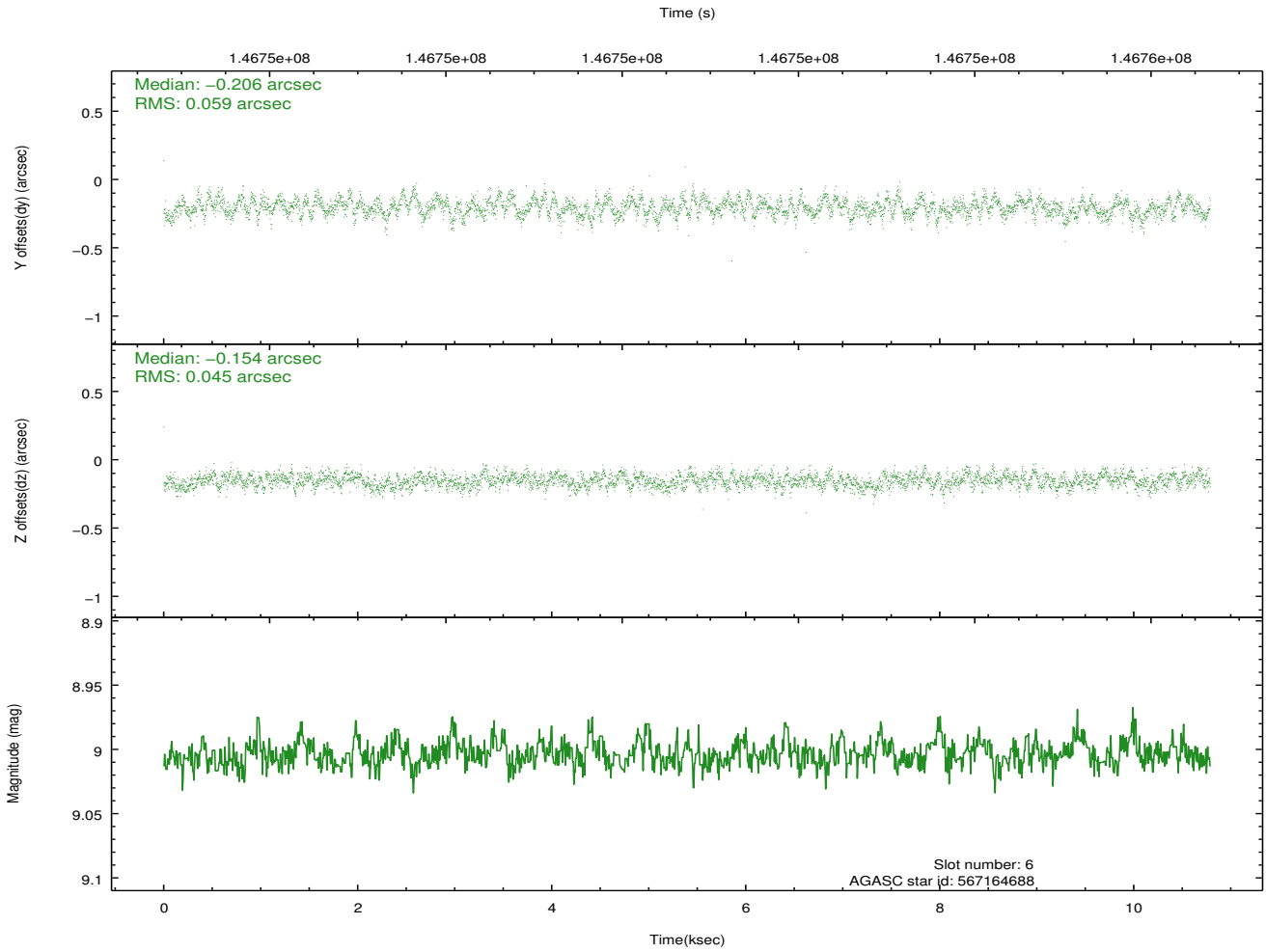
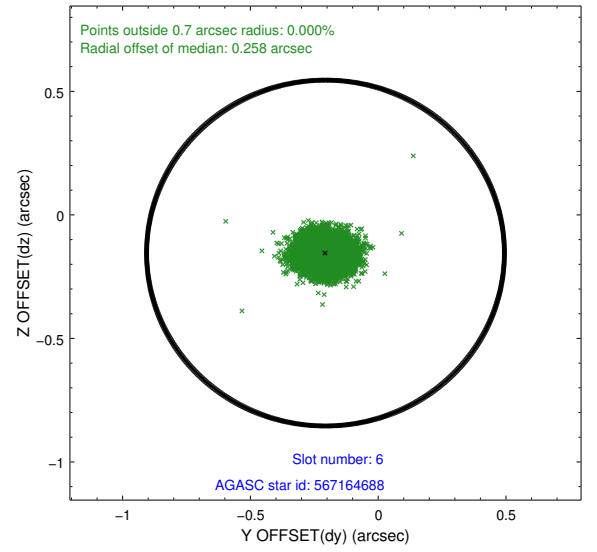
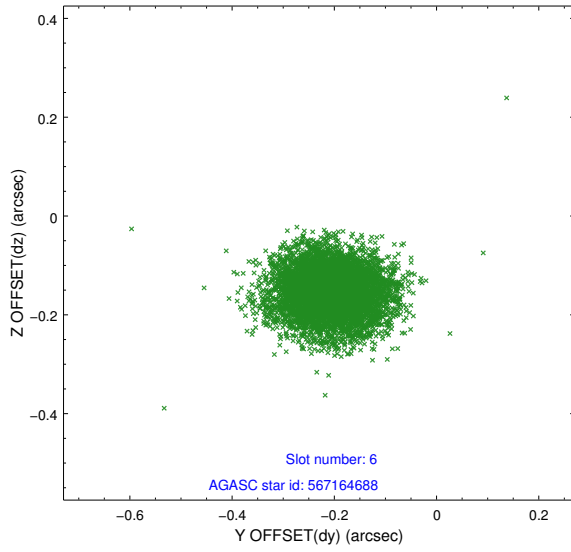
2.4.2 Slot 4



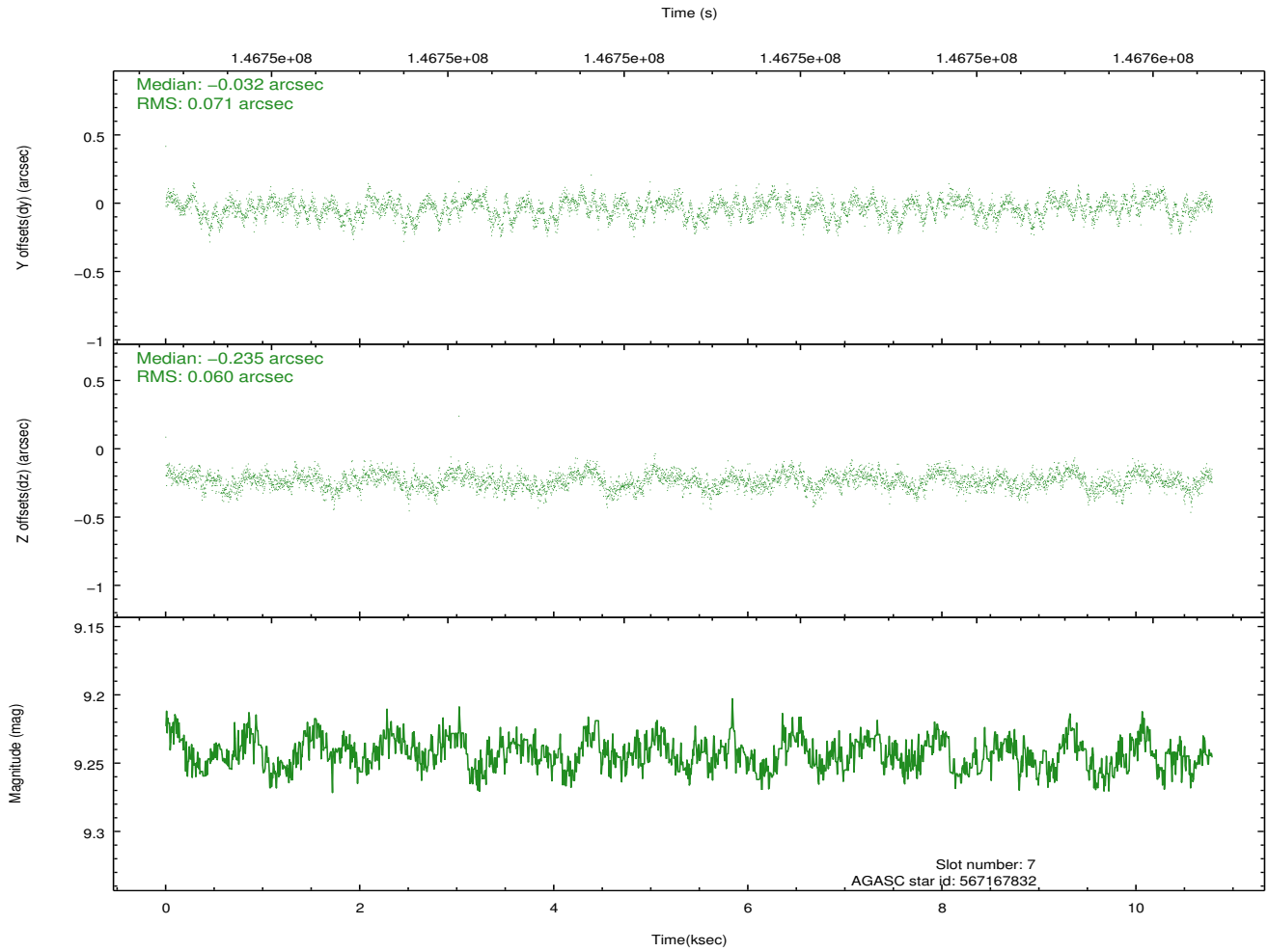
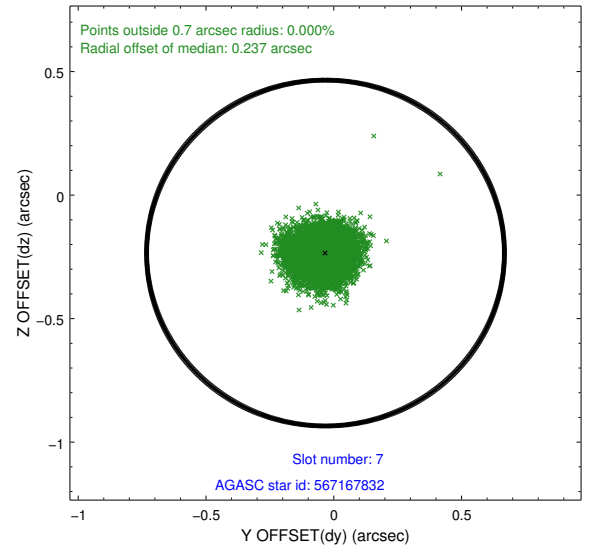
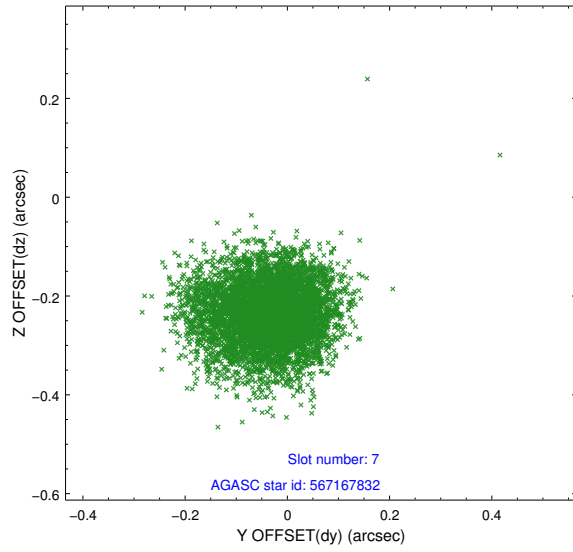
2.4.3 Slot 5



2.4.4 Slot 6

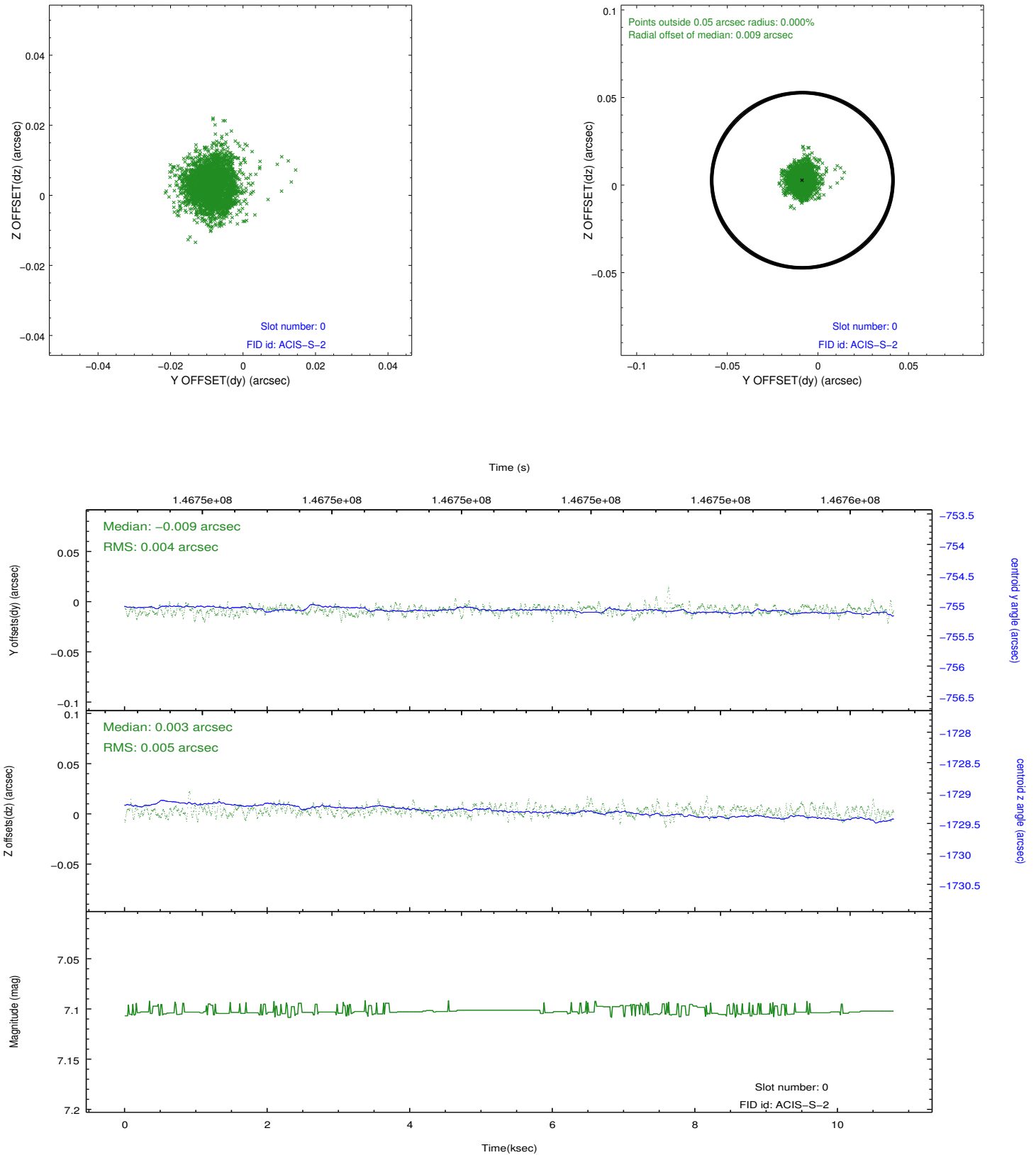


2.4.5 Slot 7

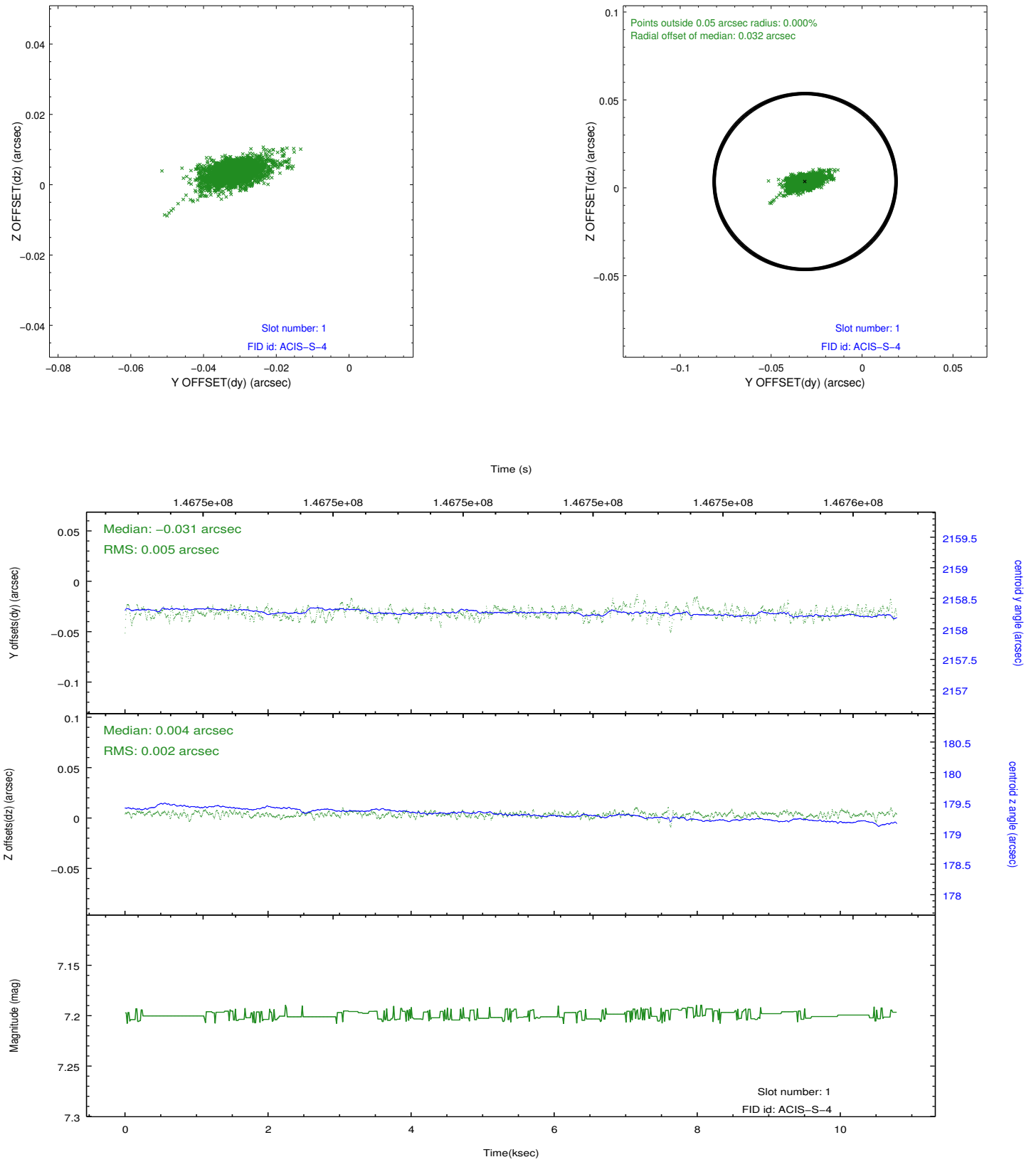


2.5 FID Slots

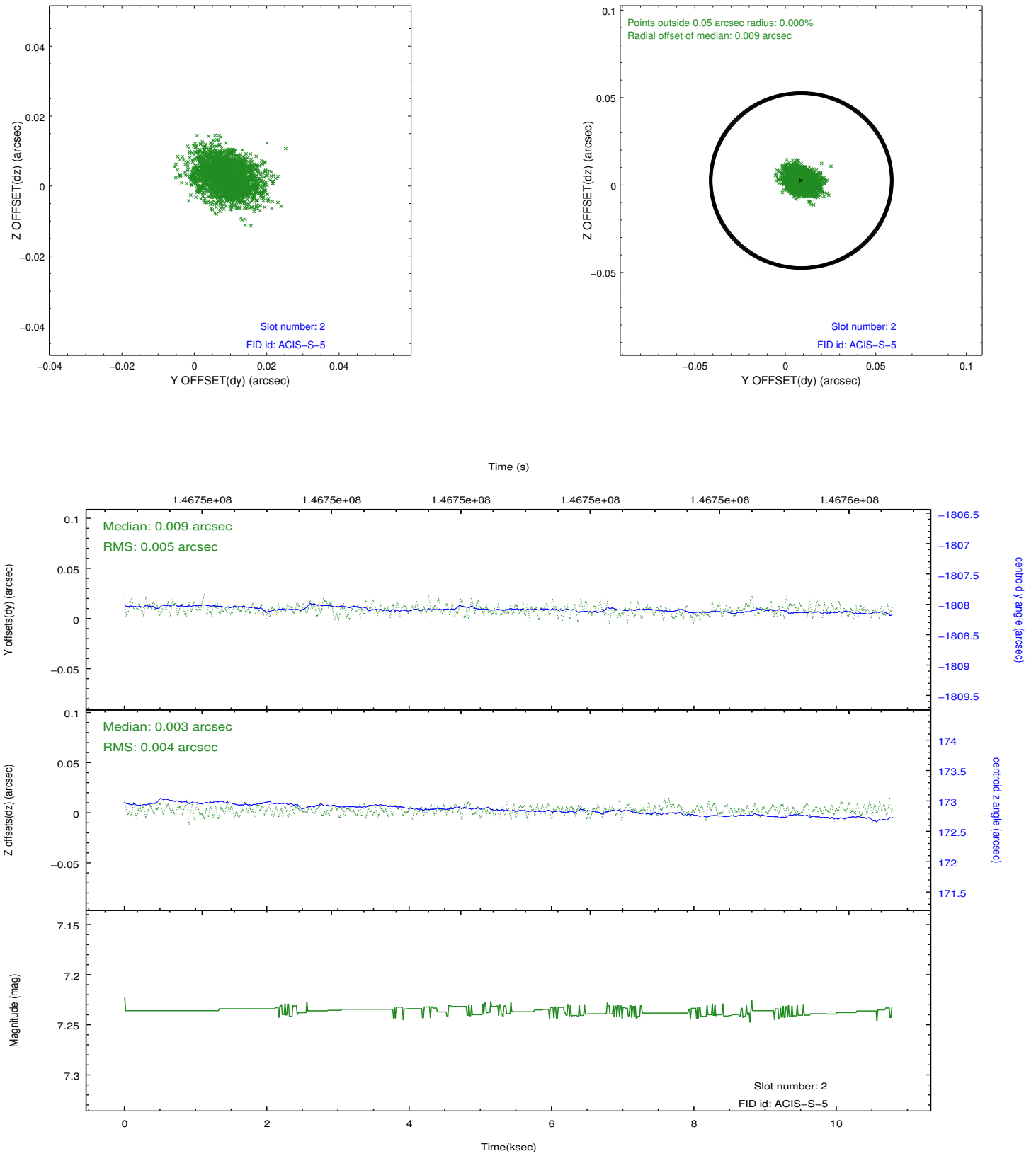
2.5.1 Slot 0



2.5.2 Slot 1



2.5.3 Slot 2



A Summary

A.1 Status

V&V Scientist	Jen Lauer
V&V Date (YYYY-MM-DD)	2012.10.23
V&V Edition	1
V&V Disposition and Status	OK
V&V Charge Time	10.513

A.2 Comments

Monitor constraint met.