

# V&V Reference Report

## L2 ASCDS Version : 7.6.9

Observation 2917 - L2 Version 001  
Chandra X-Ray Center

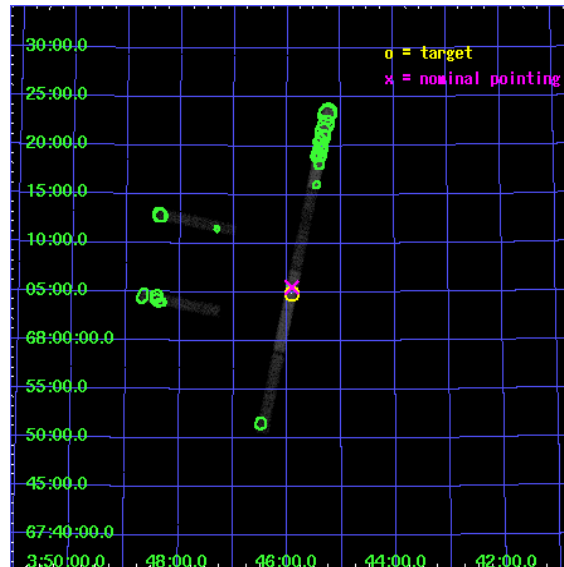
L2 Processing Date : Sep 28 2006

## Contents

<b>1</b>	<b>Front</b>	<b>2</b>
<b>2</b>	<b>OBI</b>	<b>3</b>
2.1	OBI . . . . .	3
2.1.1	Images . . . . .	3
2.1.2	Bias . . . . .	3
2.1.3	Parameters . . . . .	4
2.1.4	Events . . . . .	4
2.2	Compared Parameters . . . . .	5
2.3	Aspect . . . . .	6
2.4	Star Slots . . . . .	9
2.4.1	Slot 3 . . . . .	9
2.4.2	Slot 4 . . . . .	10
2.4.3	Slot 5 . . . . .	11
2.4.4	Slot 6 . . . . .	12
2.4.5	Slot 7 . . . . .	13
2.5	FID Slots . . . . .	14
2.5.1	Slot 0 . . . . .	14
2.5.2	Slot 1 . . . . .	15
2.5.3	Slot 2 . . . . .	16
<b>3</b>	<b>Point Sources</b>	<b>17</b>
<b>A</b>	<b>Summary</b>	<b>18</b>
A.1	Status . . . . .	18
A.2	Comments . . . . .	18

# 1 Front

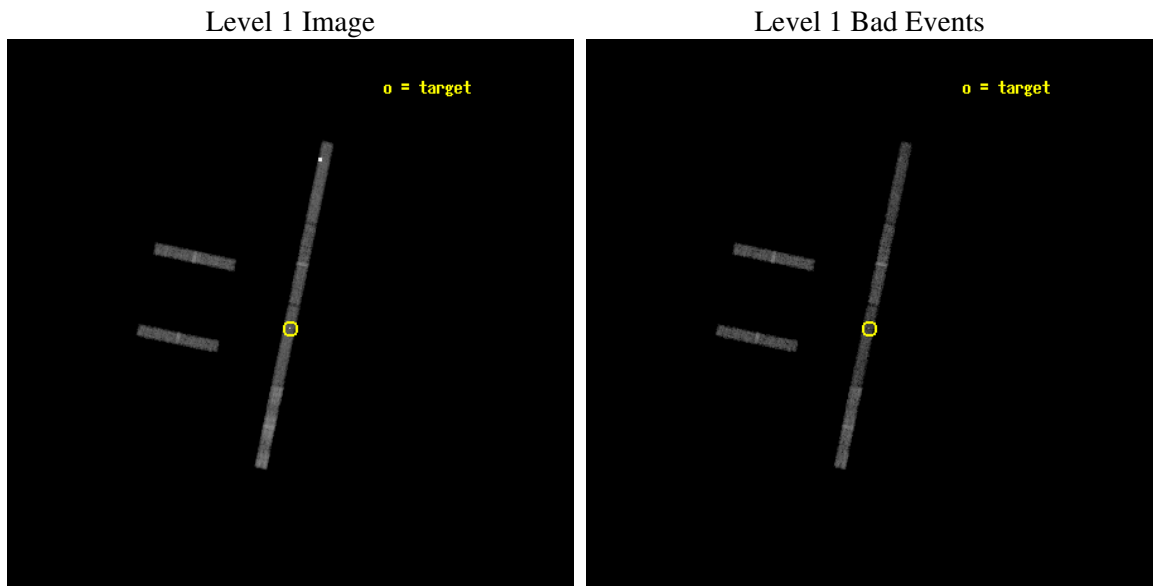
seq_num	600254
obs_id	2917
title	FURTHER PROBING THE NATURE OF SUPER-LUMINOUS X-RAY SOURCES IN NEARBY GALAXIES
observer	Dr Timothy Roberts
object	IC 342 X-1
dtcycle	0
cycle	P
ra_targ	56.48
dec_targ	68.082222
ra_nom	56.479324784371
dec_nom	68.091898601593
roll_nom	101.83107447799
revision	2
ontime	10512.599820971
livetime	9930.3949512577
ontime2	10512.599820971
ontime3	10512.599820971
ontime5	10512.599820971
ontime6	10512.599820971
ontime7	10512.599820971
ontime8	10512.599820971
l2events	21211



## 2 OBI

### 2.1 OBI

#### 2.1.1 Images



#### 2.1.2 Bias

Chip 2

Chip 3

Chip 5



Chip 6

Chip 7

Chip 8



### 2.1.3 Parameters

obi_num	2
ascdsver	7.6.9
caldbver	3.2.3
date	2006-09-28T19:00:03
revision	2

sched_exp_time	10000.000000
ontime	10513.744663686
ontime2	10513.744663686
ontime3	10513.744663686
ontime5	10513.744663686
ontime6	10513.744663686
ontime7	10513.744663686
ontime8	10513.744663686
l1events	106120

### 2.1.4 Events

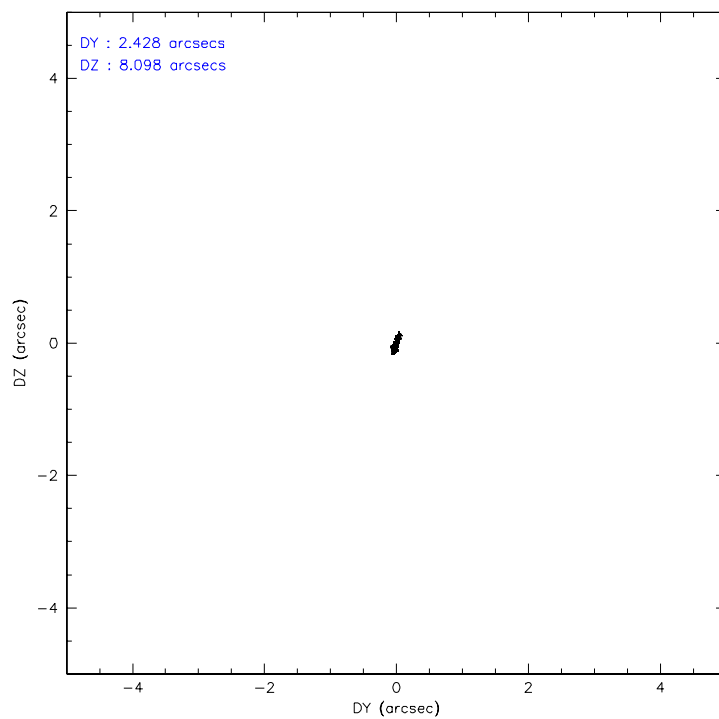
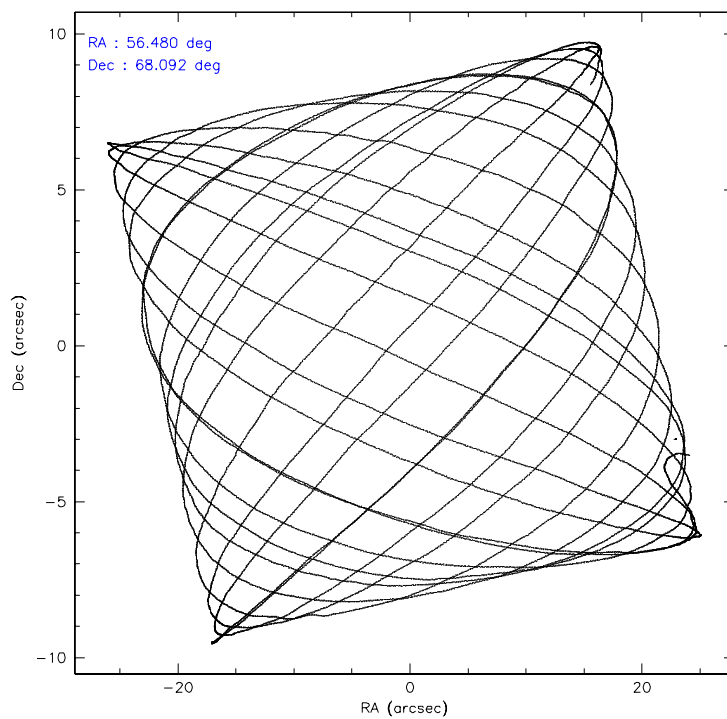
	ccd 2	ccd 3	ccd 5	ccd 6	ccd 7	ccd 8
level 1 events	13990	12477	26942	12962	15425	24324
rejected events	11804	10512	7416	10795	7202	14733
rejected %	84%	84%	27%	83%	46%	60%

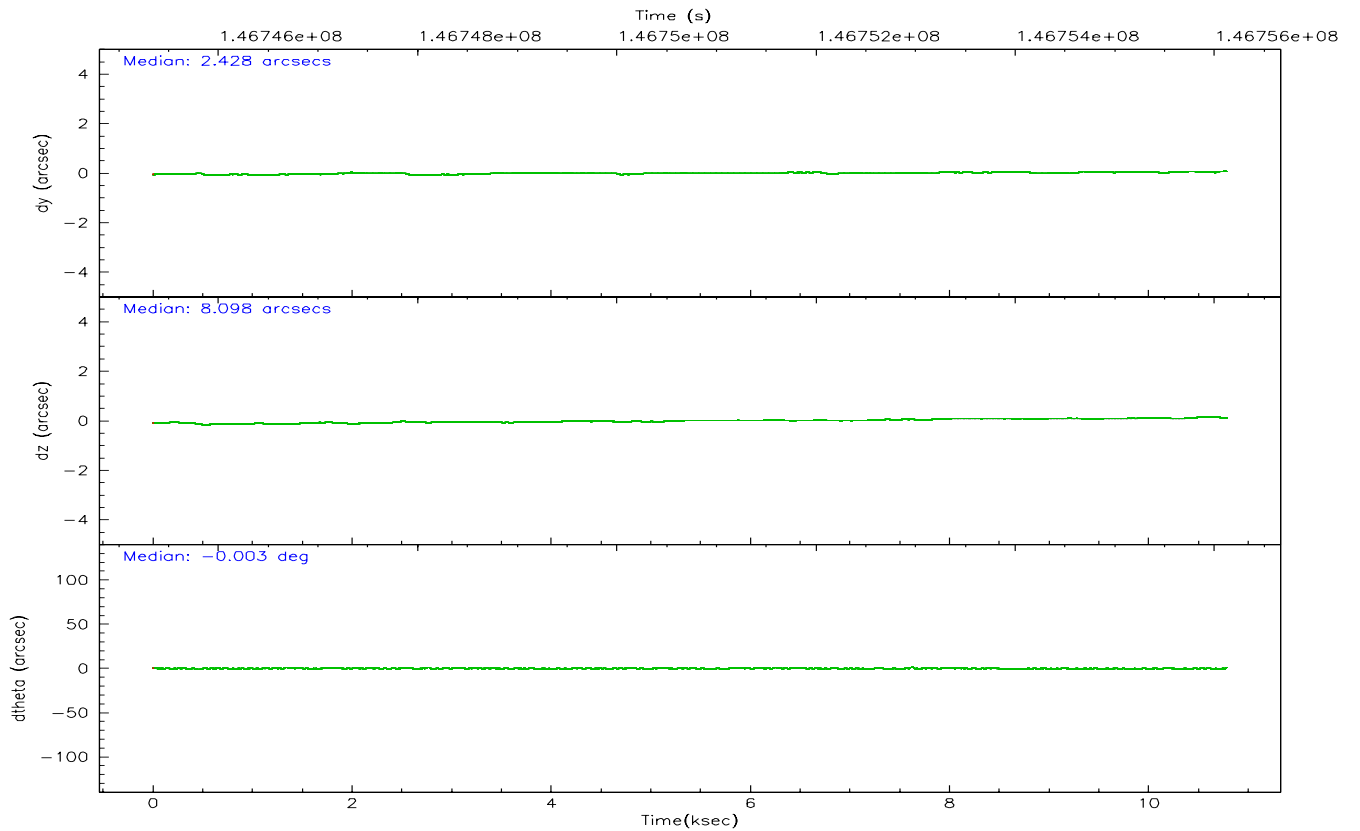
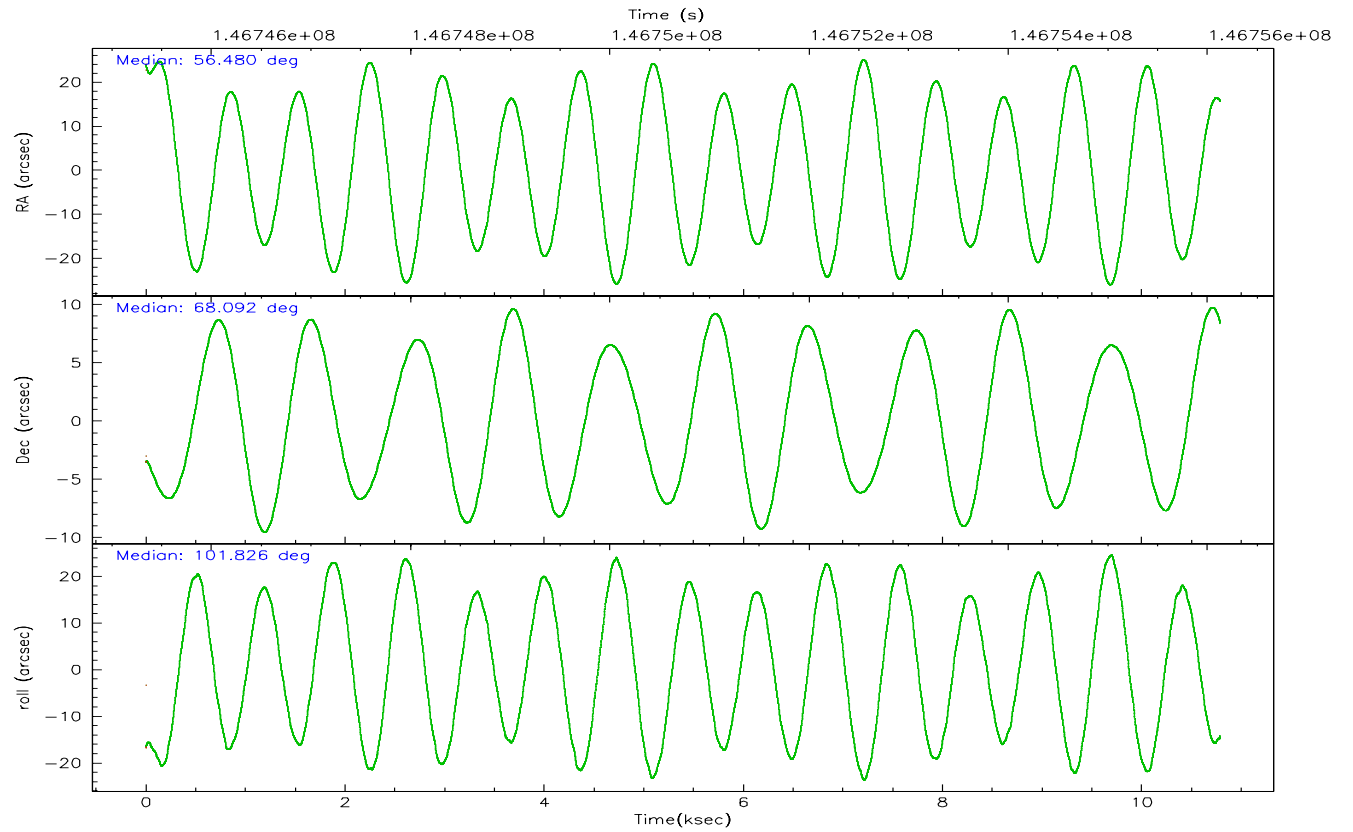
	ccd 2	ccd 3	ccd 5	ccd 6	ccd 7	ccd 8
grade 0 events	956	755	9052	830	1063	2915
	6%	6%	33%	6%	6%	11%
grade 1 events	3	5	37	1	25	19
	0%	0%	0%	0%	0%	0%
grade 2 events	443	458	6350	546	2068	1675
	3%	3%	23%	4%	13%	6%
grade 3 events	207	199	314	222	759	1330
	1%	1%	1%	1%	4%	5%
grade 4 events	218	190	489	205	723	1198
	1%	1%	1%	1%	4%	4%
grade 5 events	334	328	780	357	924	518
	2%	2%	2%	2%	5%	2%
grade 6 events	362	363	3323	364	3611	2473
	2%	2%	12%	2%	23%	10%
grade 7 events	11467	10179	6597	10437	6252	14196
	81%	81%	24%	80%	40%	58%

## 2.2 Compared Parameters

Parameter	Planned	Actual	Parameter	Planned	Actual
Instrument	ACIS	ACIS	Obspar format version number	6	6
Detector	ACIS-235678	ACIS-235678	Obspar file type	PREDICTED	ACTUAL
Grating	NONE	NONE	Obspar update status	NONE	UPDATED
Data mode	FAINT	FAINT	Number of optional ACIS chips dropped	0	0
Observation mode	POINTING	POINTING	On-chip summing requested	N	N
Pointing RA	56.528582	56.4793247843706	Subarray requested	1/8	1/8
Pointing Dec	68.071836	68.0918986015934	Subarray start row	0	449
Pointing Roll	101.628751	101.8310744779938	Subarray row count	1024	128
SIM focus pos (mm)	-0.684267	-0.6828225247311905	Alternating exposures requested	N	N
SIM defocus (mm)	0	0.001444936568705701	Primary exposure time	0.000000	0.7
SIM translation stage pos (mm)	-190.132523	-190.1400660498719			
SIM translation stage offset (mm)	0	0.00754346686406393			
Observation start time	146746132.184000	146744872.44702			
Observation start date	2002-08-26T10:47:48	2002-08-26T10:27:52			
Observation end time	146756132.184000	146756992.04752			
Observation end date	2002-08-26T13:34:28	2002-08-26T13:49:52			
Read mode	TIMED	TIMED			

## 2.3 Aspect





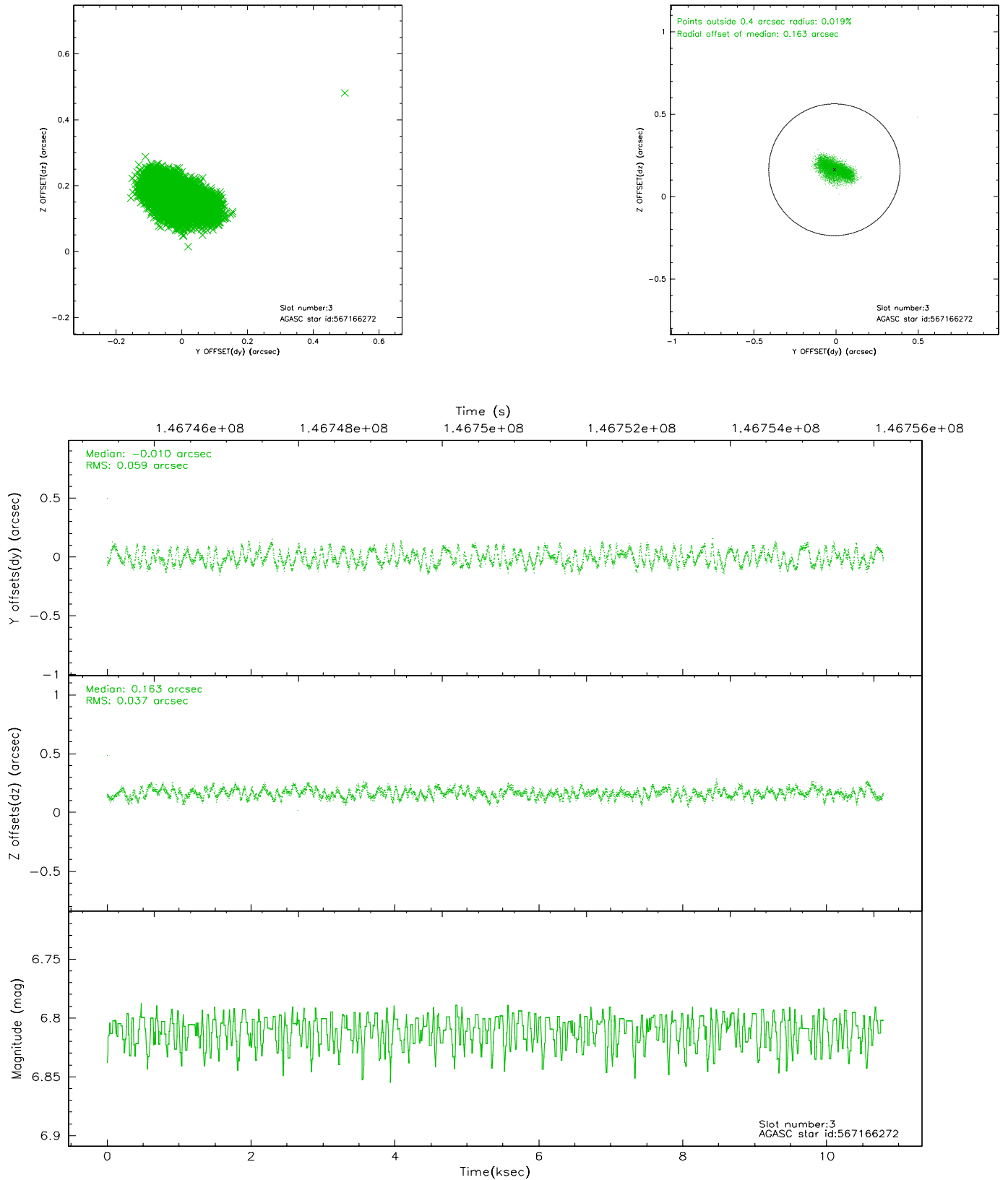
### Slot Statistics

slot	status	id	mag	n_pts	med_dy	med_dz	dr1	dr2	ra	dec	mean_y	mean_z
0	FID	ACIS-S-2	7.10	2632	0.003	0.026	0.006	0.010	0.000000	0.000000	-755.07	-1729.26
1	FID	ACIS-S-4	7.20	2632	-0.073	-0.008	0.004	0.009	0.000000	0.000000	2157.94	178.67
2	FID	ACIS-S-5	7.24	2632	0.040	-0.009	0.006	0.010	0.000000	0.000000	-1807.23	172.92
3	GUIDE	567166272	6.81	5263	-0.010	0.163	0.076	0.117	57.924067	68.507485	1186.96	-2121.98
4	GUIDE	567160520	7.64	5263	0.096	0.104	0.063	0.100	58.147596	67.556646	-2234.88	-1811.00
5	GUIDE	567160120	8.78	5260	0.152	0.125	0.089	0.140	58.169025	67.893534	-1046.71	-2052.70
6	GUIDE	567164688	9.00	5262	-0.206	-0.154	0.079	0.126	55.209386	68.614739	2282.29	1298.88
7	GUIDE	567167832	9.24	5259	-0.032	-0.235	0.099	0.158	54.952112	68.306287	1277.29	1880.00

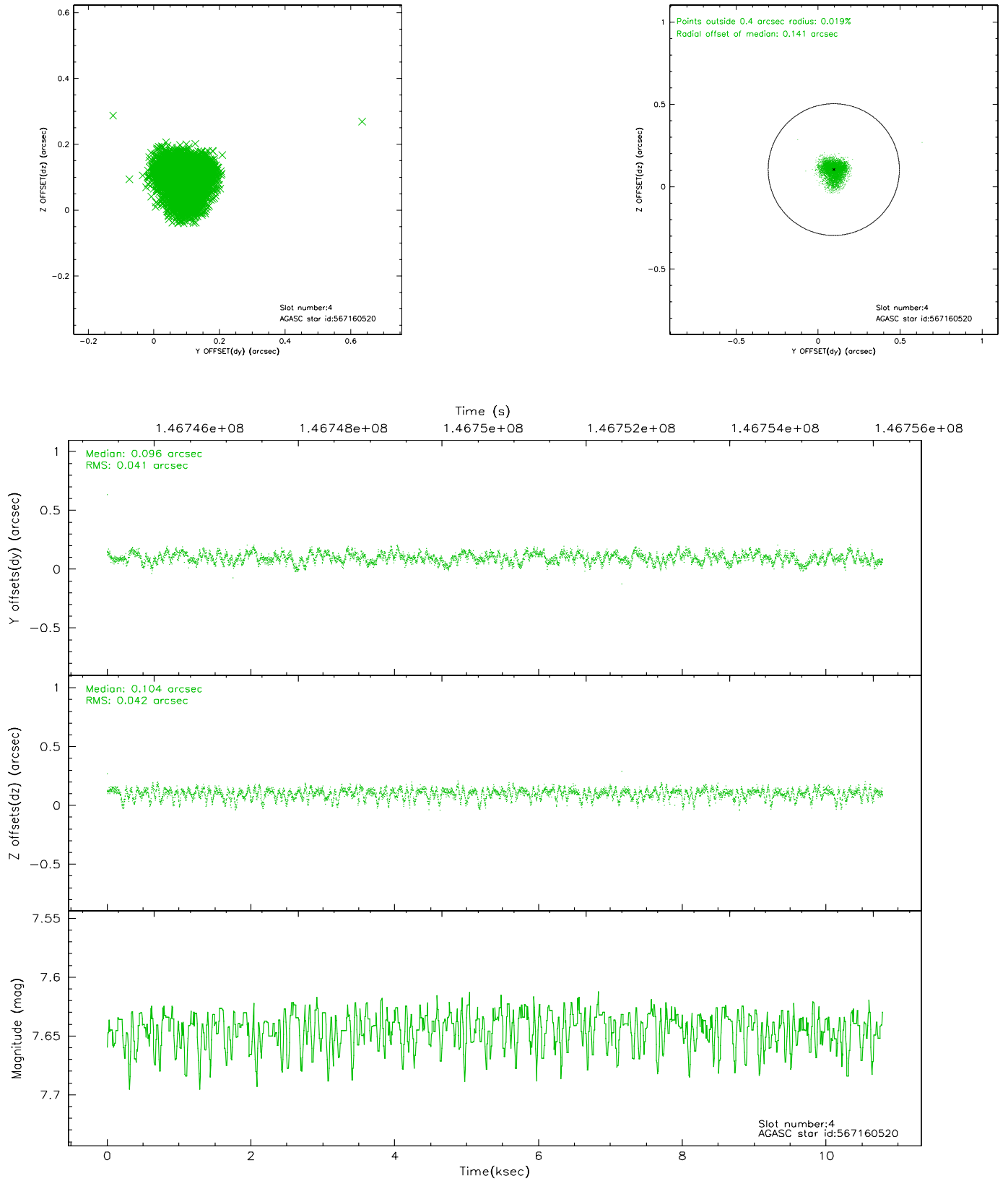


## 2.4 Star Slots

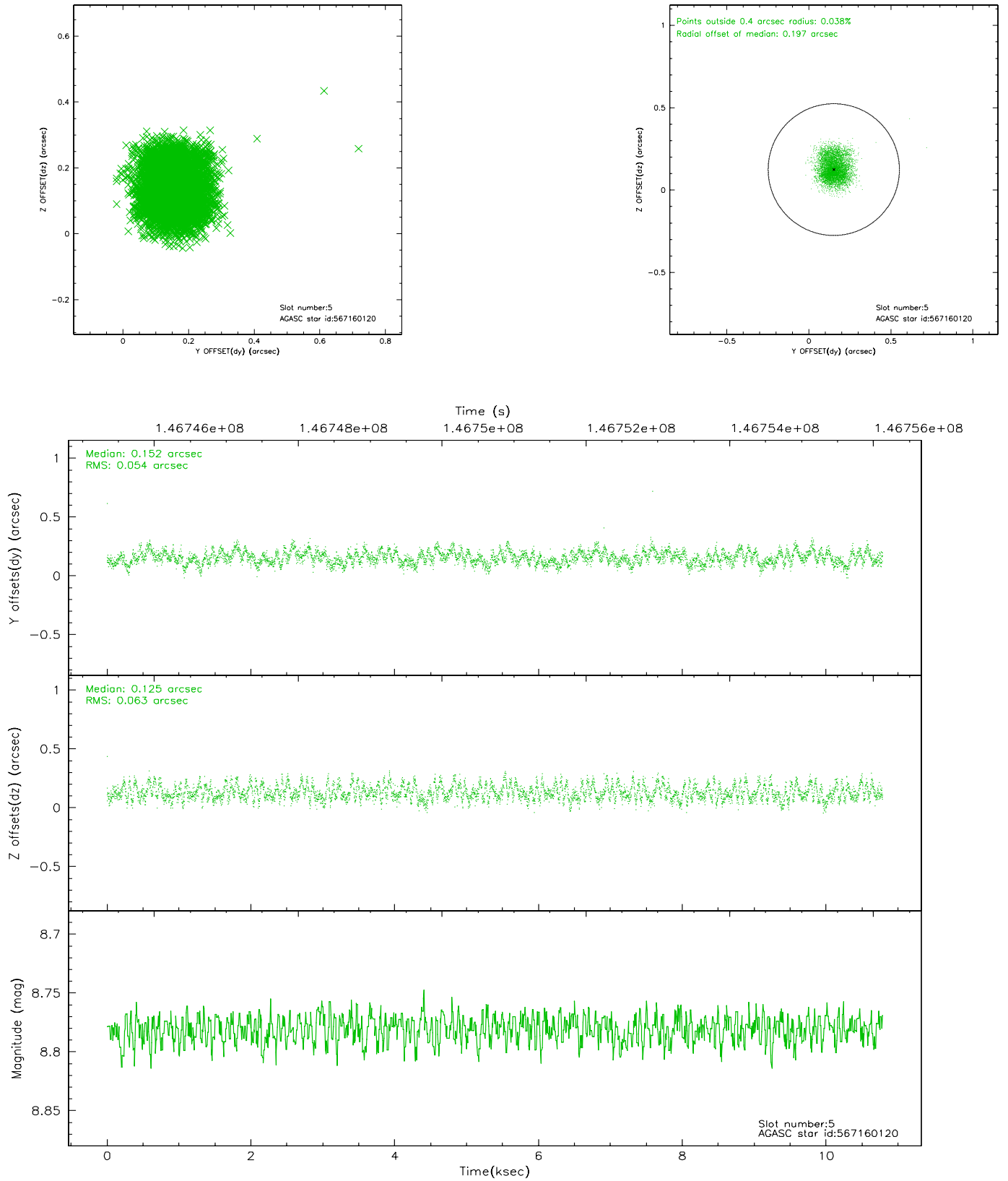
### 2.4.1 Slot 3



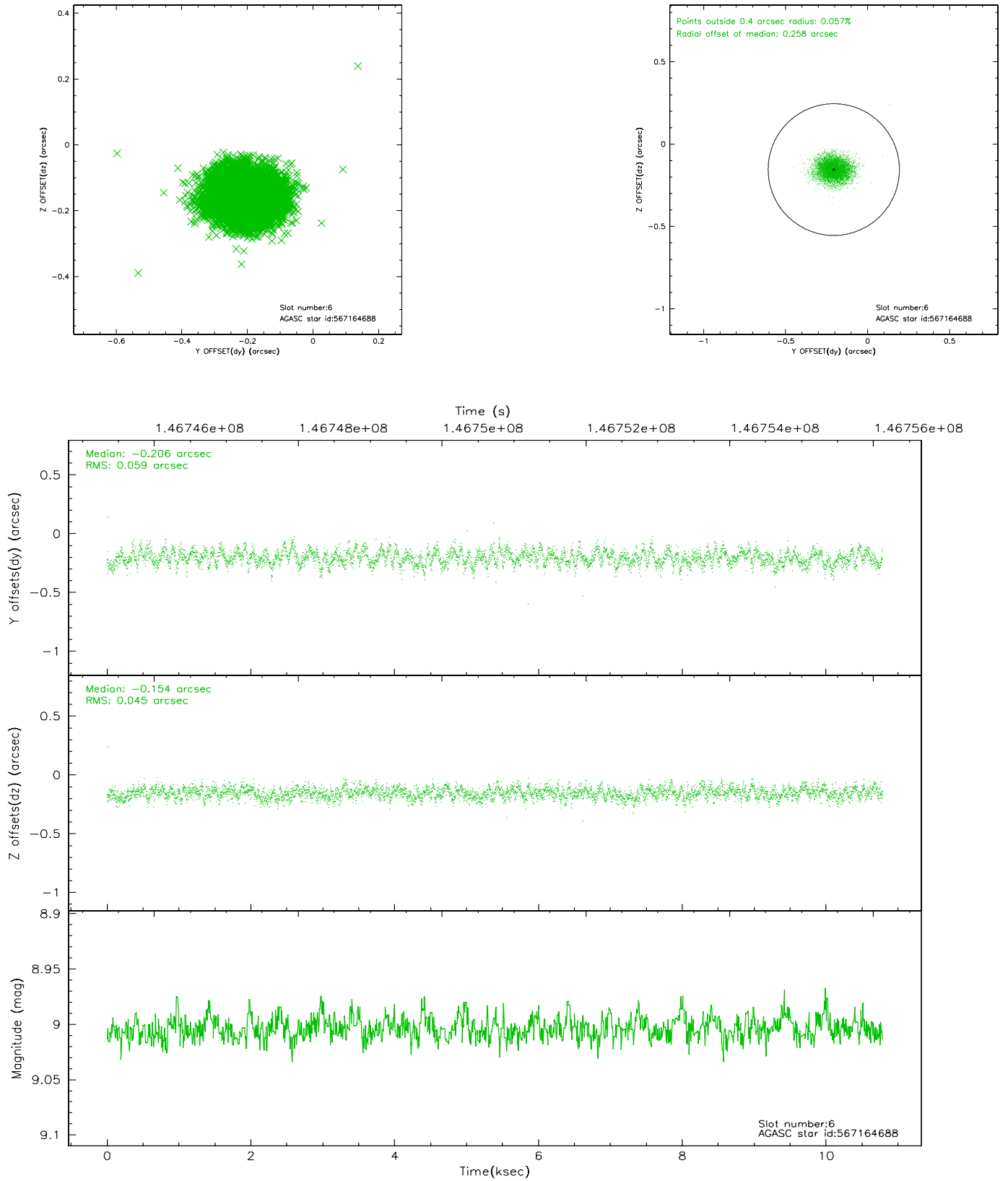
## 2.4.2 Slot 4



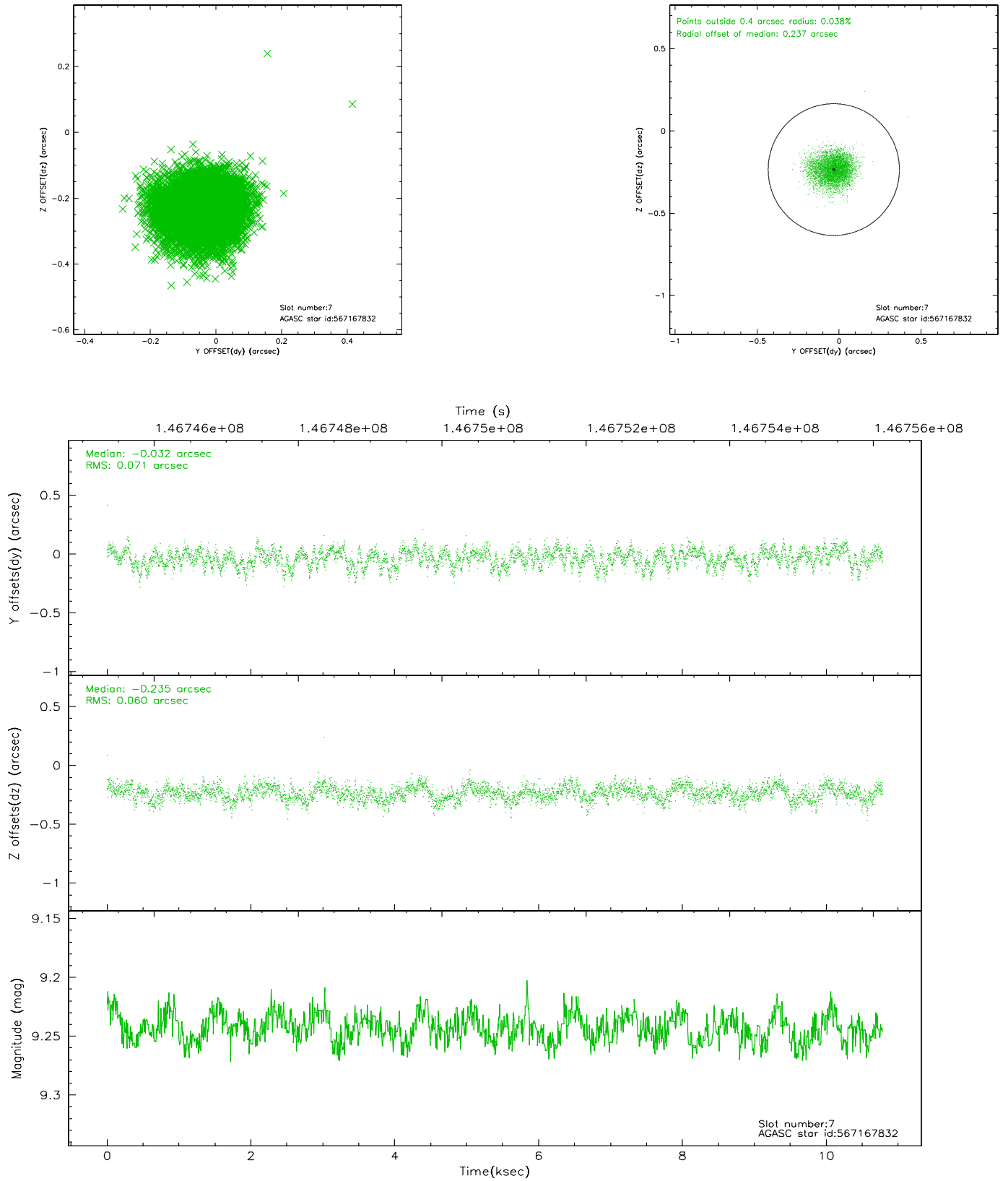
### 2.4.3 Slot 5



## 2.4.4 Slot 6

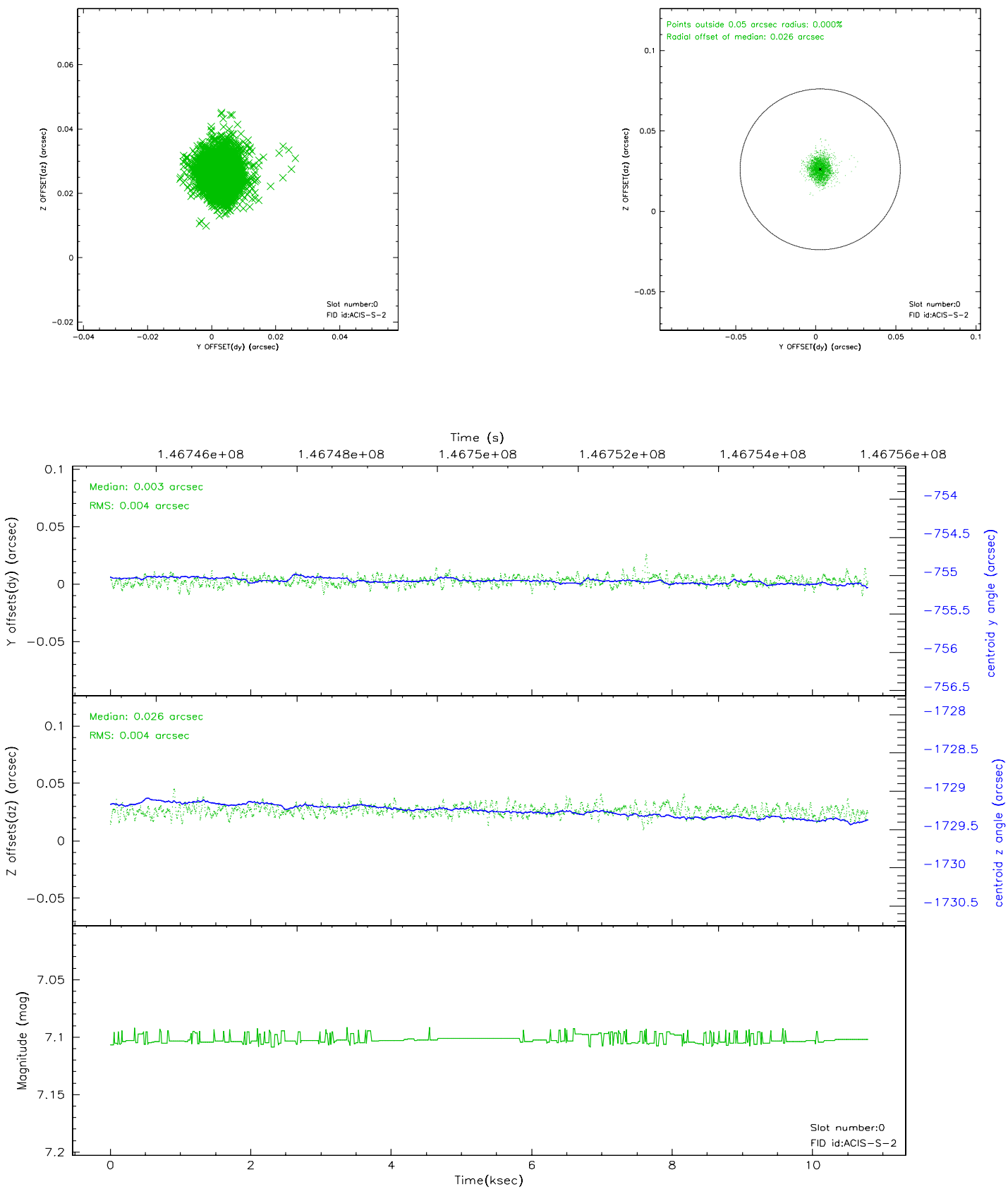


## 2.4.5 Slot 7

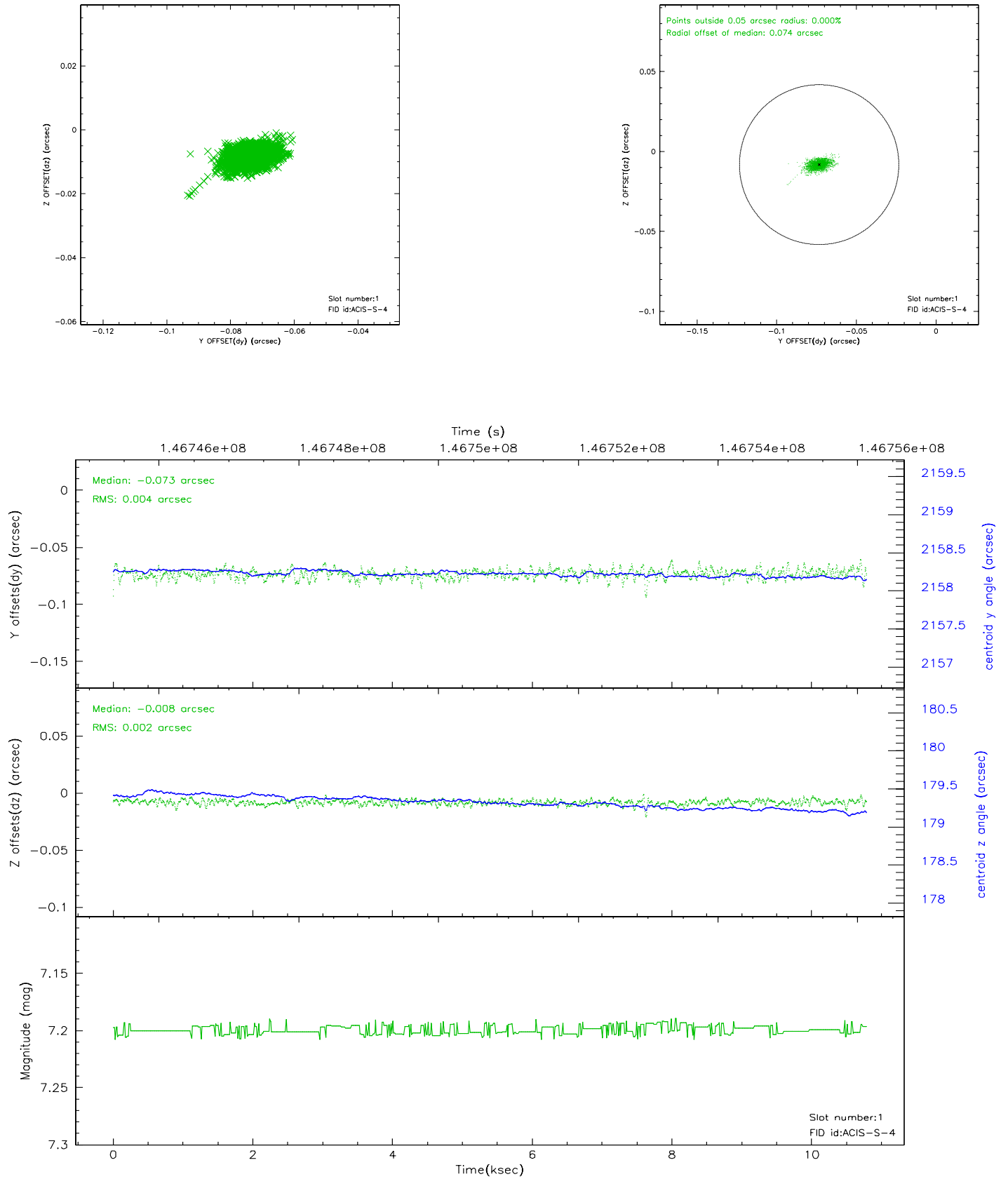


## 2.5 FID Slots

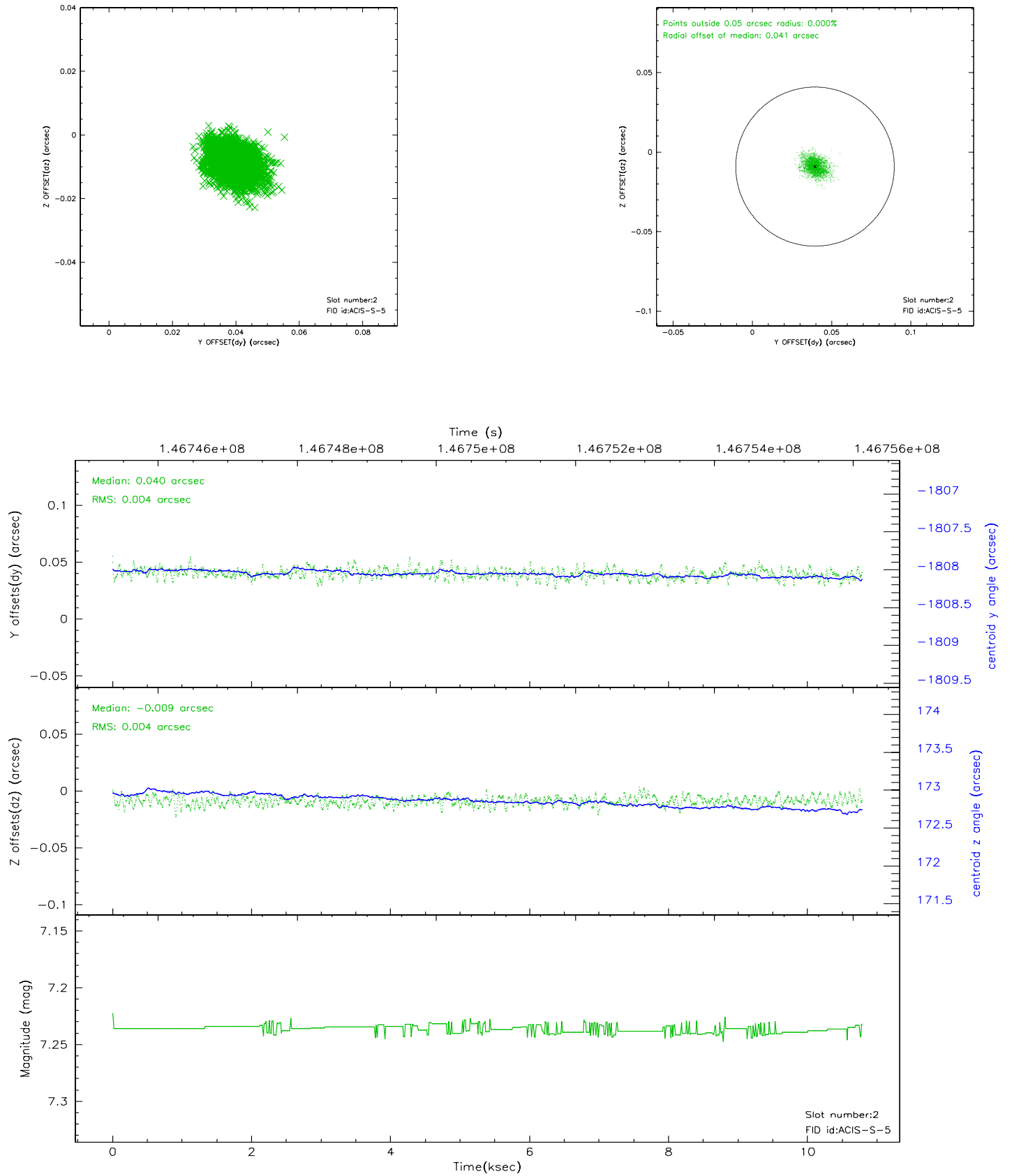
### 2.5.1 Slot 0



## 2.5.2 Slot 1

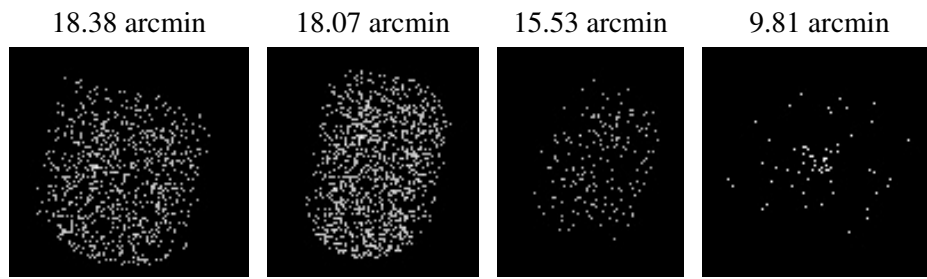


### 2.5.3 Slot 2





### 3 Point Sources



## A Summary

### A.1 Status

V&V Scientist	Jen Lauer
V&V Date (YYYY-MM-DD)	2006.09.29
V&V Edition	1
V&V Disposition and Status	OK
V&V Charge Time	10.513

### A.2 Comments

Monitor constraint met.