

V&V Reference Report

L2 ASCDS Version : 8.4.5

Observation 2915 - L2 Version 3
Chandra X-Ray Center

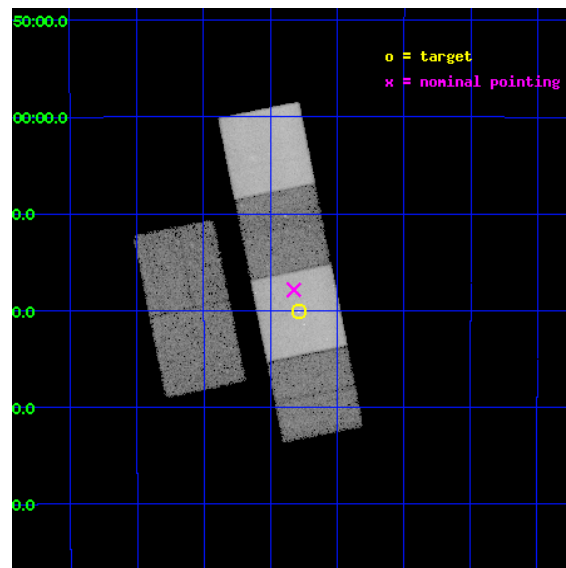
L2 Processing Date : Oct 14 2012

Contents

1	Front	2
2	OBI	3
2.1	OBI	3
2.1.1	Images	3
2.1.2	Bias	3
2.1.3	Parameters	4
2.1.4	Events	4
2.2	Compared Parameters	5
2.3	Aspect	6
2.4	Star Slots	9
2.4.1	Slot 3	9
2.4.2	Slot 4	10
2.4.3	Slot 5	11
2.4.4	Slot 6	12
2.4.5	Slot 7	13
2.5	FID Slots	14
2.5.1	Slot 0	14
2.5.2	Slot 1	15
2.5.3	Slot 2	16
A	Summary	17
A.1	Status	17
A.2	Comments	17

1 Front

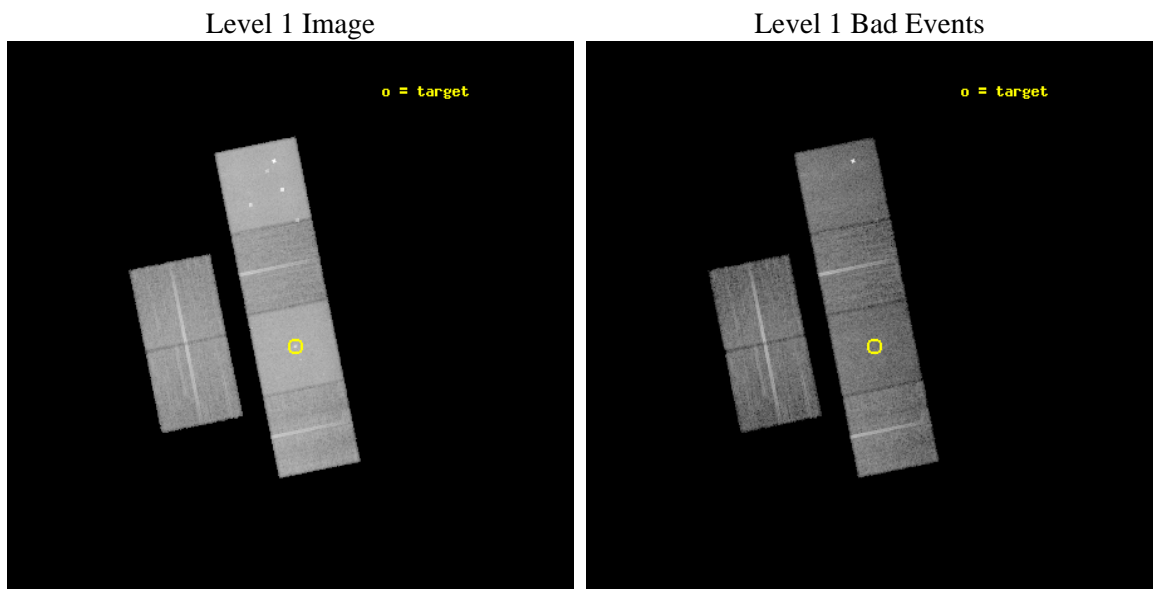
seq_num	600252	Sequence number
obs_id	2915	Observation id
title	THE SHAPES OF DARK MATTER HALOS	Proposal title
observer	Dr. DAVID BUOTE	Principal investigator
object	NGC 1332	Source name
dtcycle	0	
cycle	P	events from which exps? Prim/Second/Both
ra_targ	51.570833	Observer's specified target RA [deg]
dec_targ	-21.335833	Observer's specified target Dec [deg]
ra_nom	51.581001892412	Nominal RA [deg]
dec_nom	-21.297929771129	Nominal Dec [deg]
roll_nom	78.560346456626	Nominal Roll [deg]
revision	3	Processing version of data
ontime	18515.199931026	Sum of GTIs [s]
livetime	18280.749320984	Livetime [s]
ontime2	18515.199931026	Sum of GTIs [s]
ontime3	18511.958960772	Sum of GTIs [s]
ontime5	18515.199931026	Sum of GTIs [s]
ontime6	18515.199931026	Sum of GTIs [s]
ontime7	18515.199931026	Sum of GTIs [s]
ontime8	18511.958960742	Sum of GTIs [s]
l2events	357163	Number of level 2 events



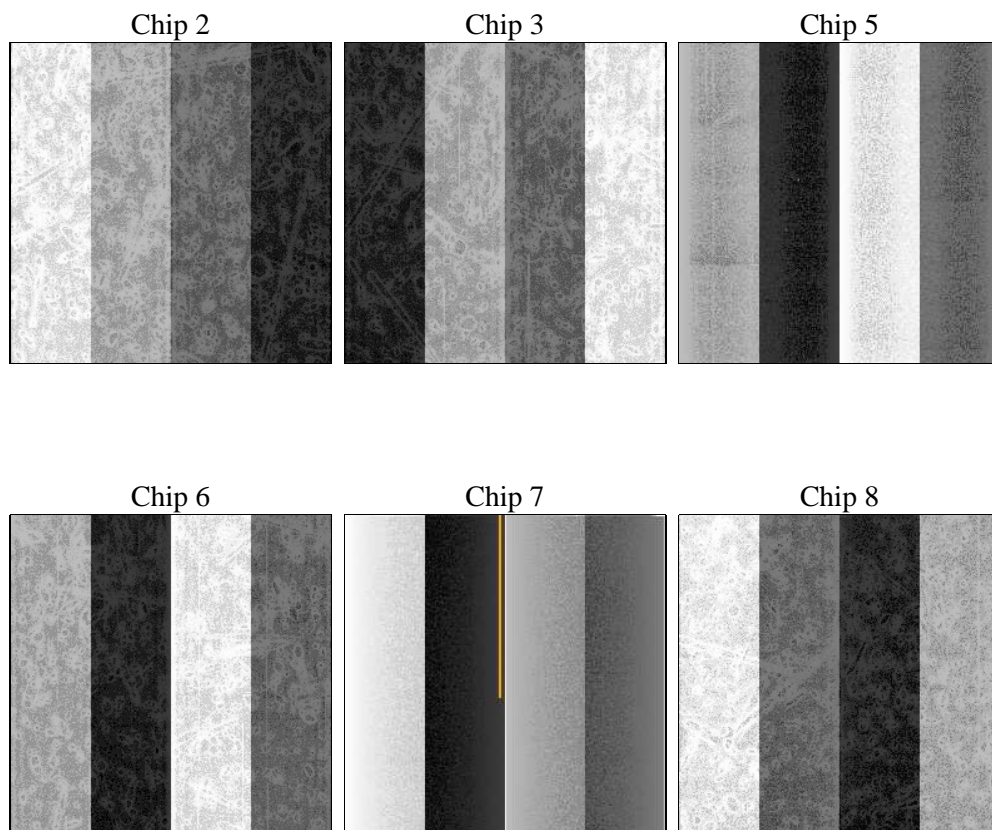
2 OBI

2.1 OBI

2.1.1 Images



2.1.2 Bias



2.1.3 Parameters

obi_num	0	Obi number	sched_exp_time	18763.698000	[s] Scheduled observation exposure time
ascdsver	8.4.5	Processing system revision	ontime	18515.199931026	Sum of GTIs [s]
caldsver	4.5.2	 	ontime2	18515.199931026	Sum of GTIs [s]
date	2012-10-14T19:20:25	Date and time of file creation	ontime3	18511.958960772	Sum of GTIs [s]
revision	3	Processing version of data	ontime5	18515.199931026	Sum of GTIs [s]
			ontime6	18515.199931026	Sum of GTIs [s]
			ontime7	18515.199931026	Sum of GTIs [s]
			ontime8	18511.958960742	Sum of GTIs [s]
			l1events	1017620	Number of level 1 events

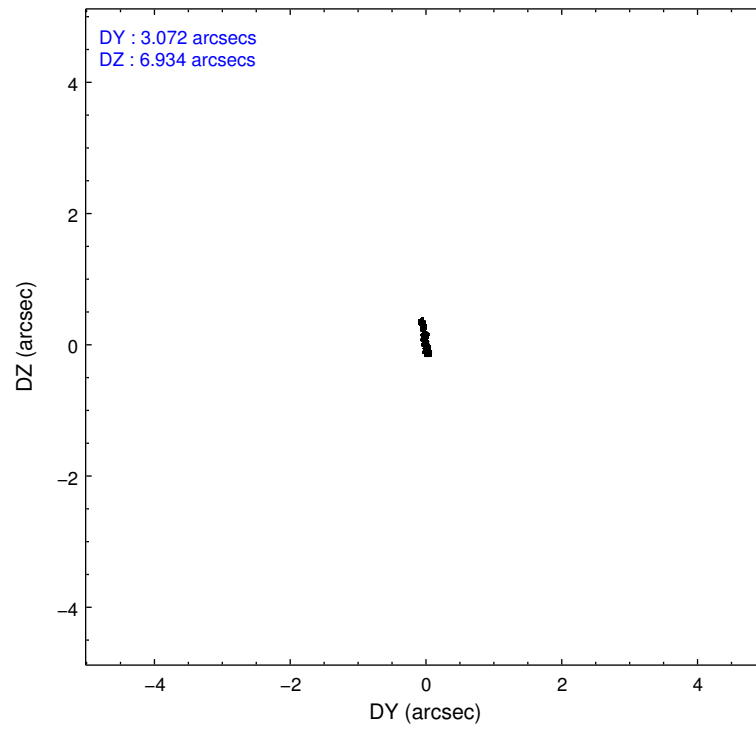
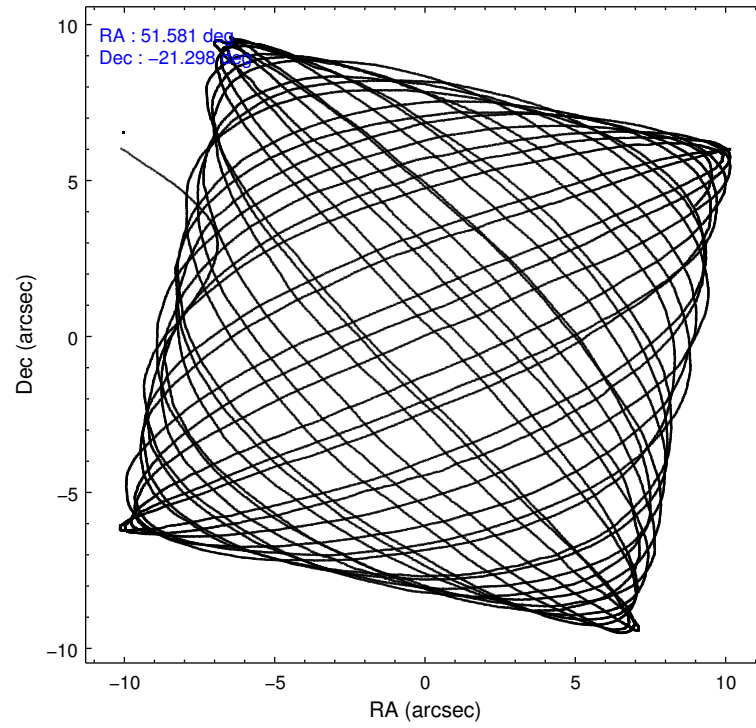
2.1.4 Events

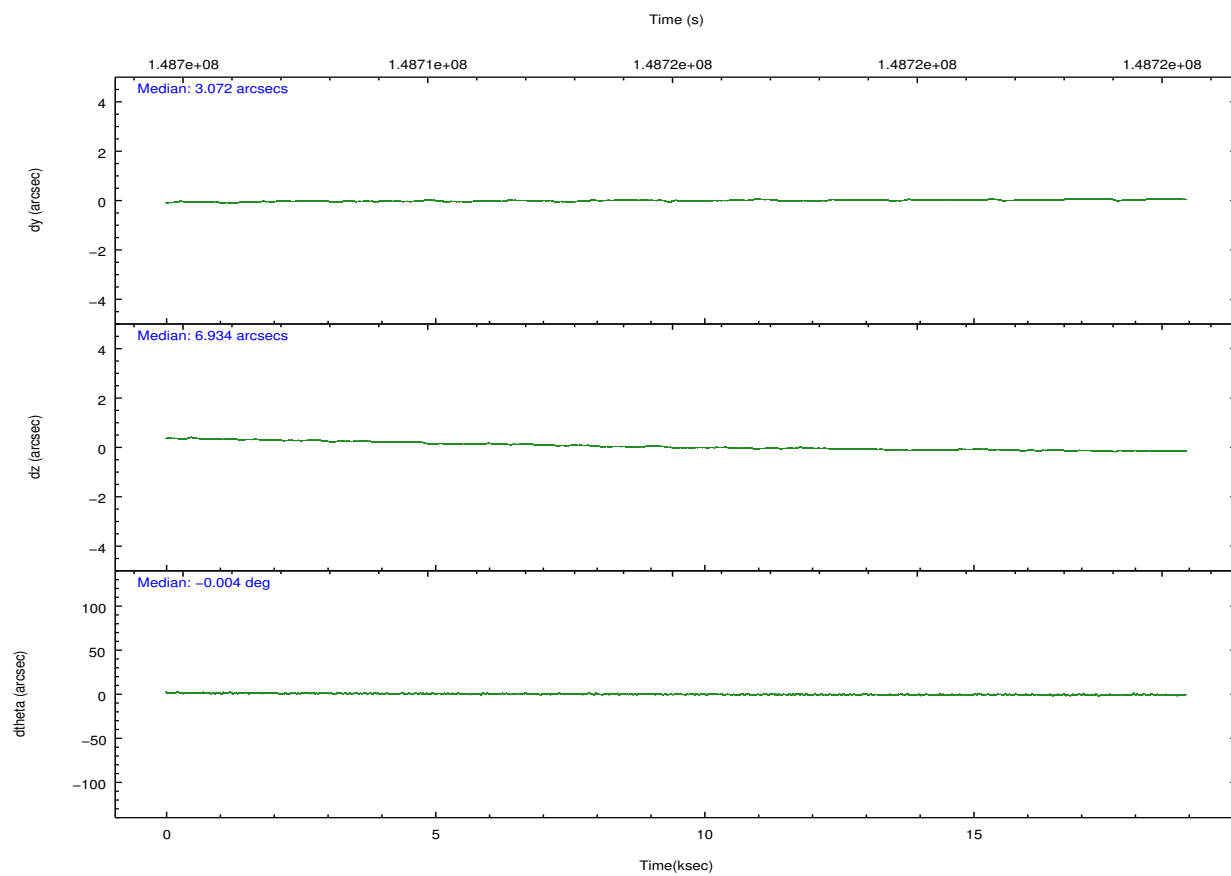
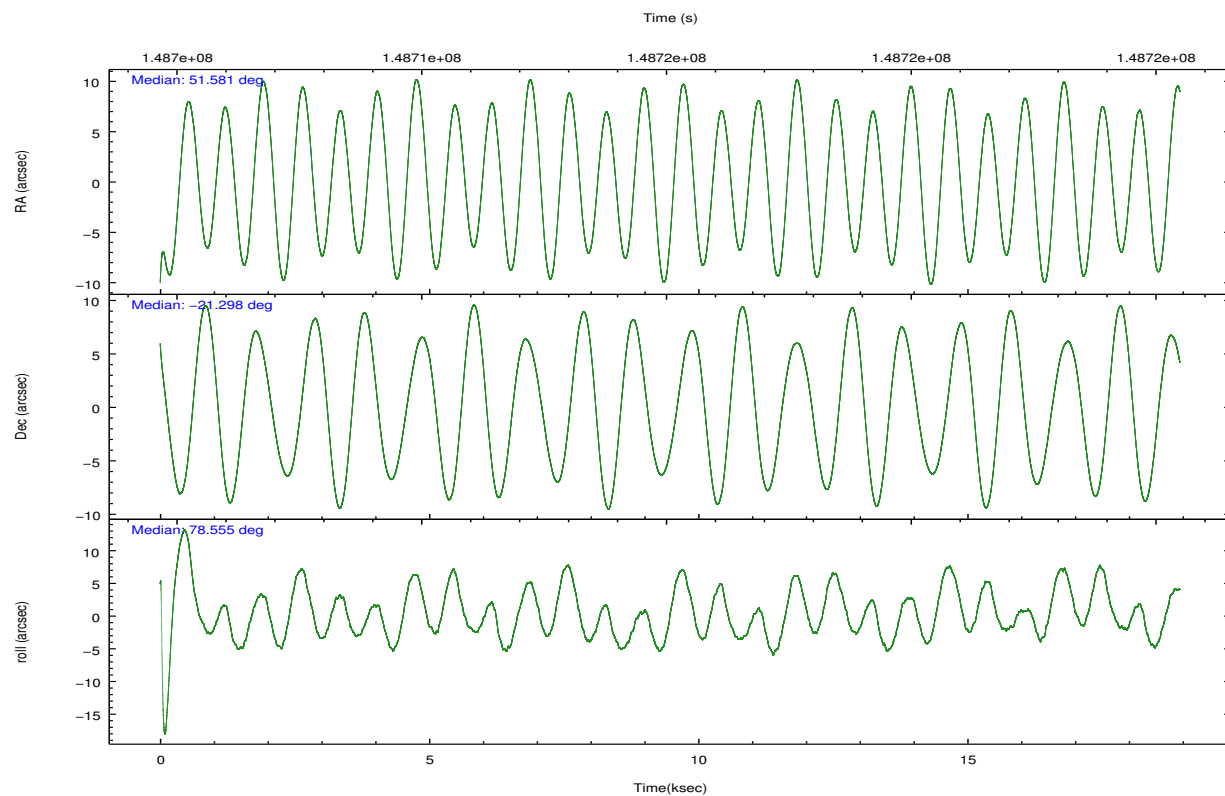
	ccd 2	ccd 3	ccd 5	ccd 6	ccd 7	ccd 8		ccd 2	ccd 3	ccd 5	ccd 6	ccd 7	ccd 8
level 1 events	122087	120352	260302	126654	230071	158154	grade 0 events	10749	10379	27613	12502	15978	16011
rejected events	102823	101411	101074	104393	92373	119629		8%	8%	10%	9%	6%	10%
rejected %	84%	84%	38%	82%	40%	75%	grade 1 events	89	76	601	85	165	125
								0%	0%	0%	0%	0%	0%
							grade 2 events	3148	3068	45013	3655	25871	7484
								2%	2%	17%	2%	11%	4%
							grade 3 events	1468	1535	8331	1586	11309	3379
								1%	1%	3%	1%	4%	2%
							grade 4 events	1483	1483	8063	1509	11480	3158
								1%	1%	3%	1%	4%	1%
							grade 5 events	4382	4944	14627	5231	15011	6619
								3%	4%	5%	4%	6%	4%
							grade 6 events	2432	2488	70268	3017	73104	8504
								1%	2%	26%	2%	31%	5%
							grade 7 events	98336	96379	85786	99069	77153	112874
								80%	80%	32%	78%	33%	71%

2.2 Compared Parameters

Parameter	Planned	Actual	Parameter	Planned	Actual
Instrument	ACIS	ACIS	Obspar format version number	7	7
Detector	ACIS-235678	ACIS-235678	Obspar file type	PREDICTED	ACTUAL
Grating	NONE	NONE	Obspar update status	NONE	UPDATED
Data mode	FAINT	FAINT	Number of optional ACIS chips dropped	0	0
Observation mode	POINTING	POINTING	On-chip summing requested	N	N
[deg] Pointing RA	51.590694	51.58100189241245	Subarray requested	NONE	NONE
[deg] Pointing Dec	-21.323637	-21.29792977112873	Alternating exposures requested	N	N
[deg] Pointing Roll	78.407221	78.56034645662588	[s] Primary exposure time	0.000000	3.2
[mm] SIM focus pos	-0.684267	-0.6828225247311905			
[mm] SIM defocus	0	0.001444936568705701			
[mm] SIM translation stage pos	-190.132523	-190.1425803651734			
[mm] SIM translation stage offset	0	0.01005778216563158			
[s] Observation start time (MET)	148705775.184000	148704964.65295			
Observation start date	2002-09-18T03:08:31	2002-09-18T02:56:04			
[s] Observation end time (MET)	148724538.184000	148724853.24127			
Observation end date	2002-09-18T08:21:14	2002-09-18T08:27:33			
Read mode	TIMED	TIMED			

2.3 Aspect



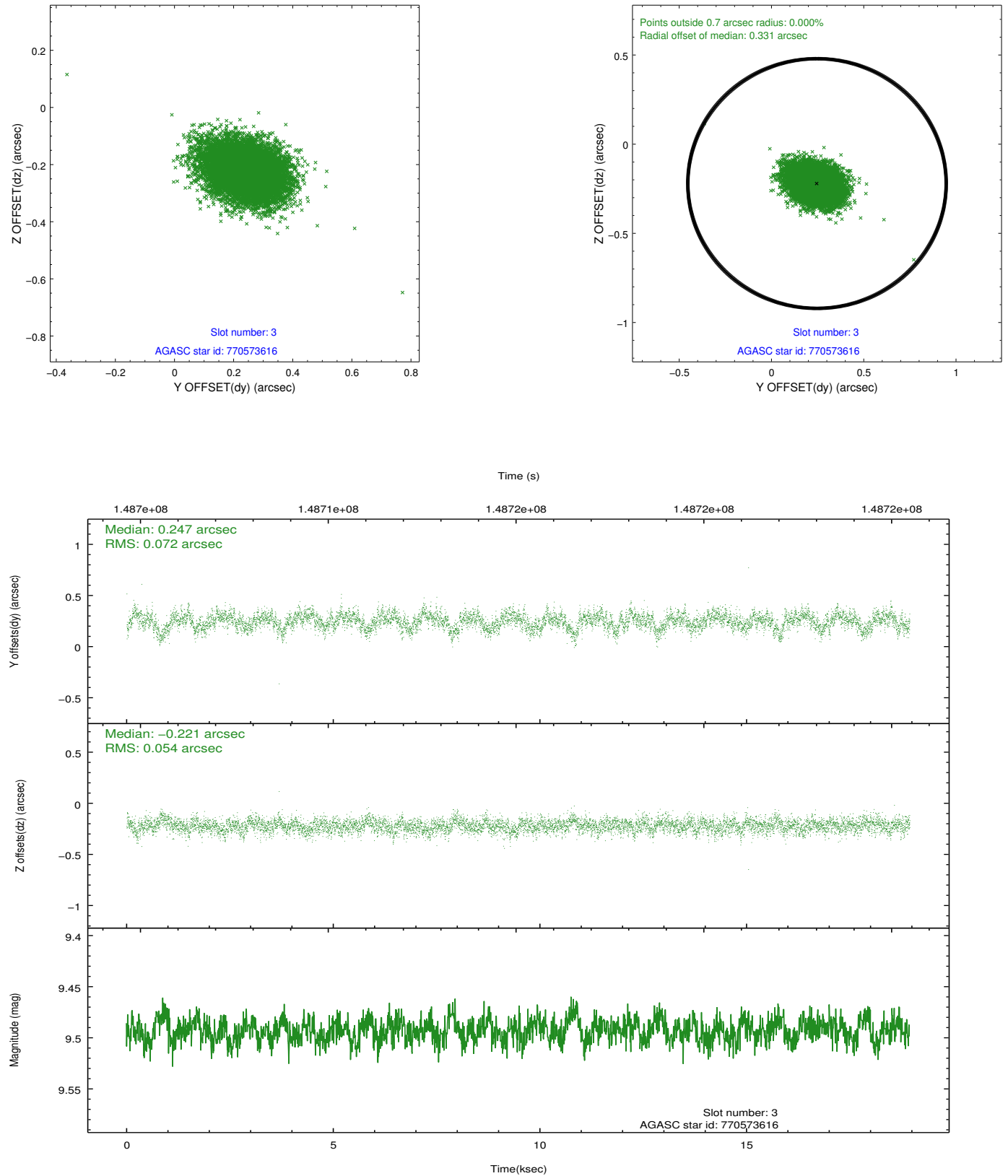


Slot Statistics

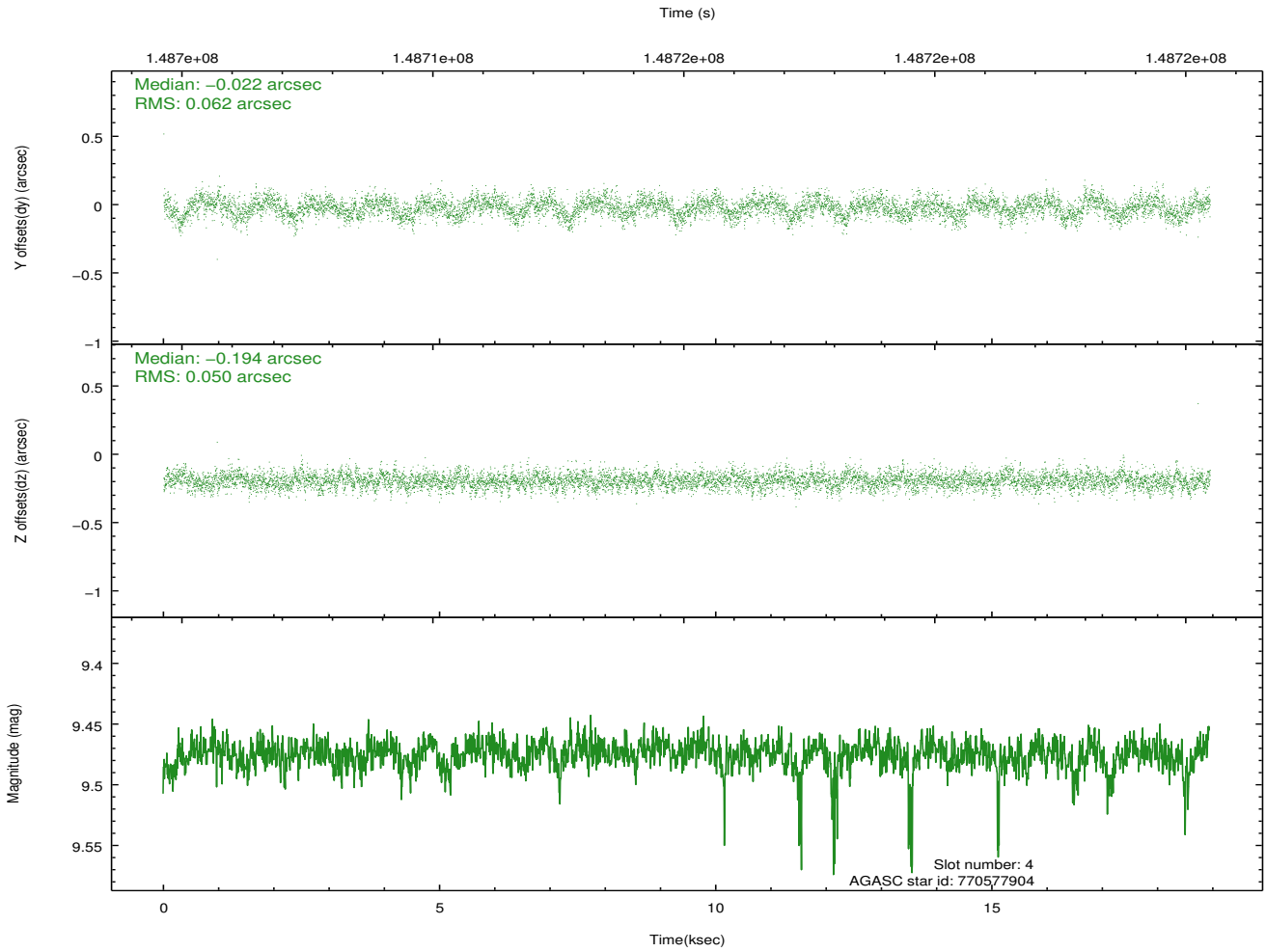
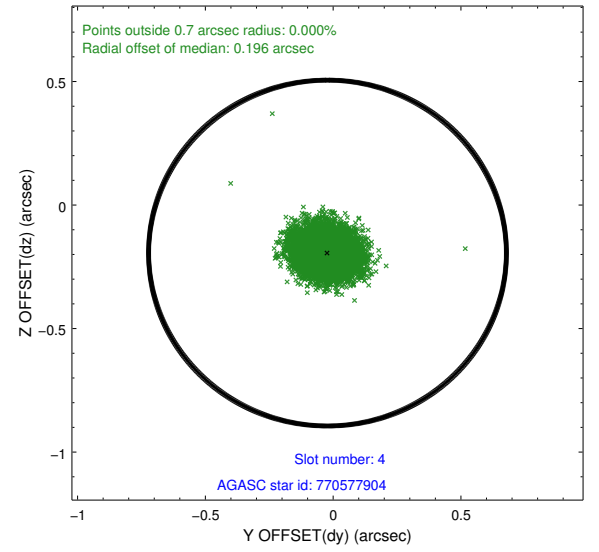
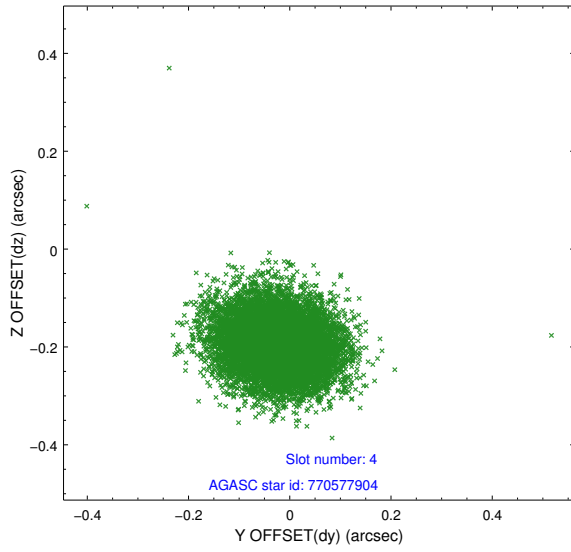
slot	status	id	mag	n_pts	med_dy	med_dz	dr1	dr2	ra	dec	mean_y	mean_z
0	FID	ACIS-S-2	7.12	4620	-0.023	0.001	0.008	0.013	0.000000	0.000000	-755.72	-1728.10
1	FID	ACIS-S-4	7.20	4620	-0.001	0.011	0.007	0.013	0.000000	0.000000	2157.47	180.19
2	FID	ACIS-S-5	7.24	4617	-0.008	-0.003	0.007	0.012	0.000000	0.000000	-1808.30	174.06
3	GUIDE	770573616	9.49	9231	0.247	-0.221	0.094	0.158	51.694921	-21.667566	-1142.49	-591.42
4	GUIDE	770577904	9.47	9222	-0.022	-0.194	0.084	0.136	51.566611	-20.775173	1917.86	475.43
5	GUIDE	770579504	10.11	9106	-0.094	0.034	0.133	0.207	52.151381	-20.838808	2085.94	-1498.27
6	GUIDE	770581880	9.64	9238	-0.018	0.149	0.098	0.161	52.016479	-20.947102	1614.13	-1130.89
7	GUIDE	770581640	7.85	9241	-0.105	0.235	0.062	0.099	52.322400	-21.371182	320.10	-2439.10

2.4 Star Slots

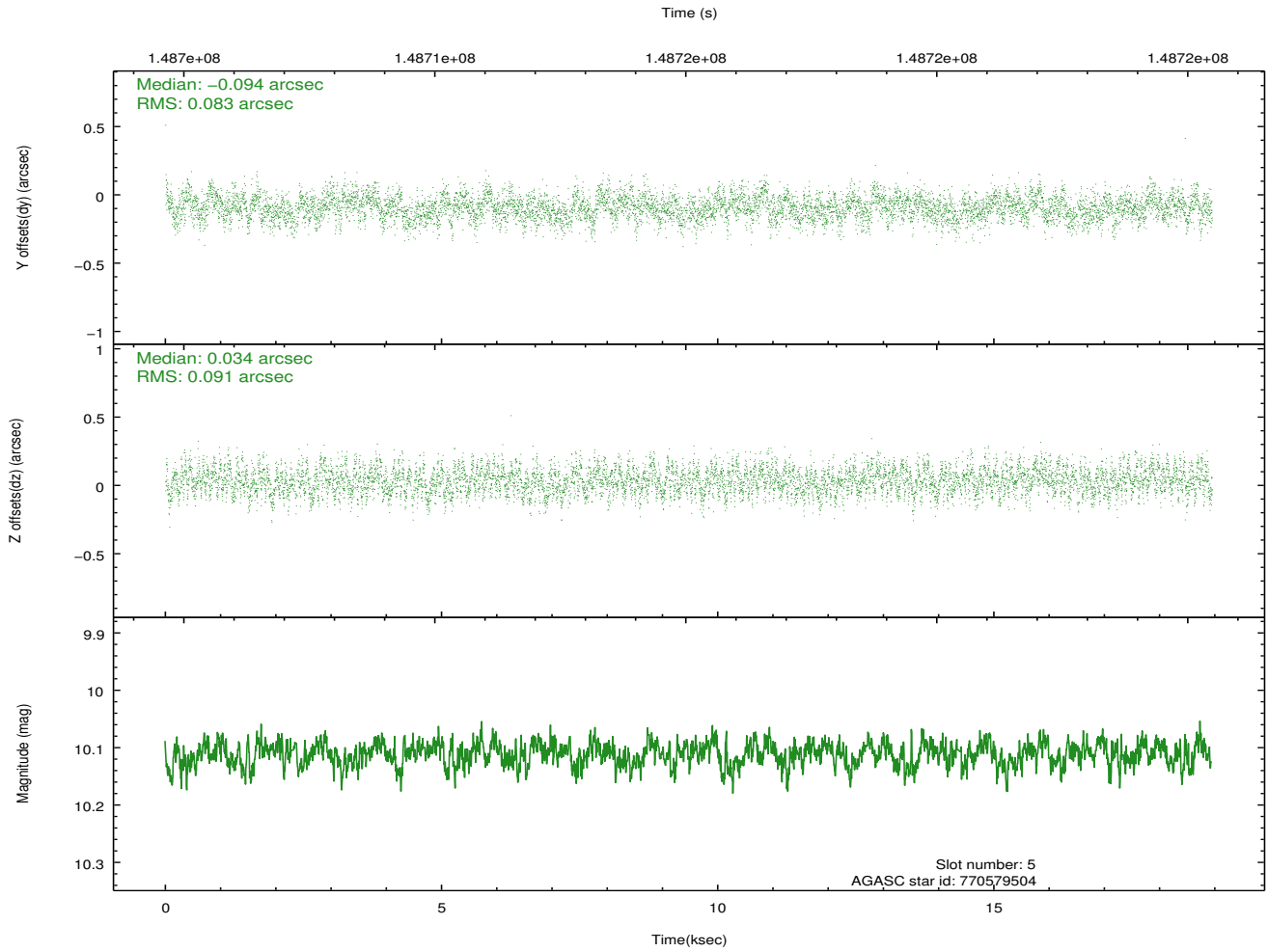
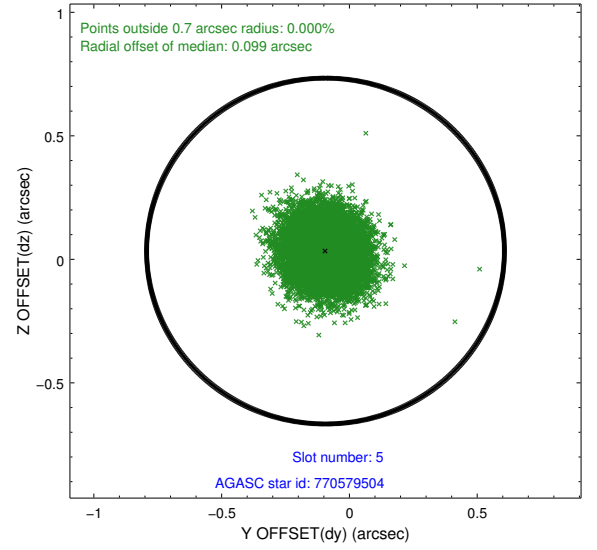
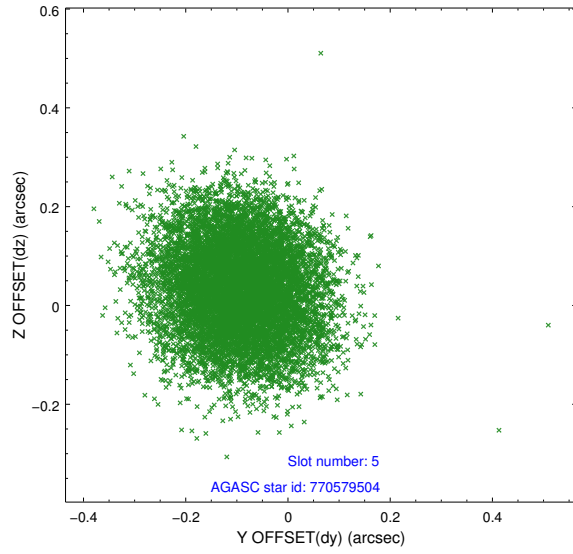
2.4.1 Slot 3



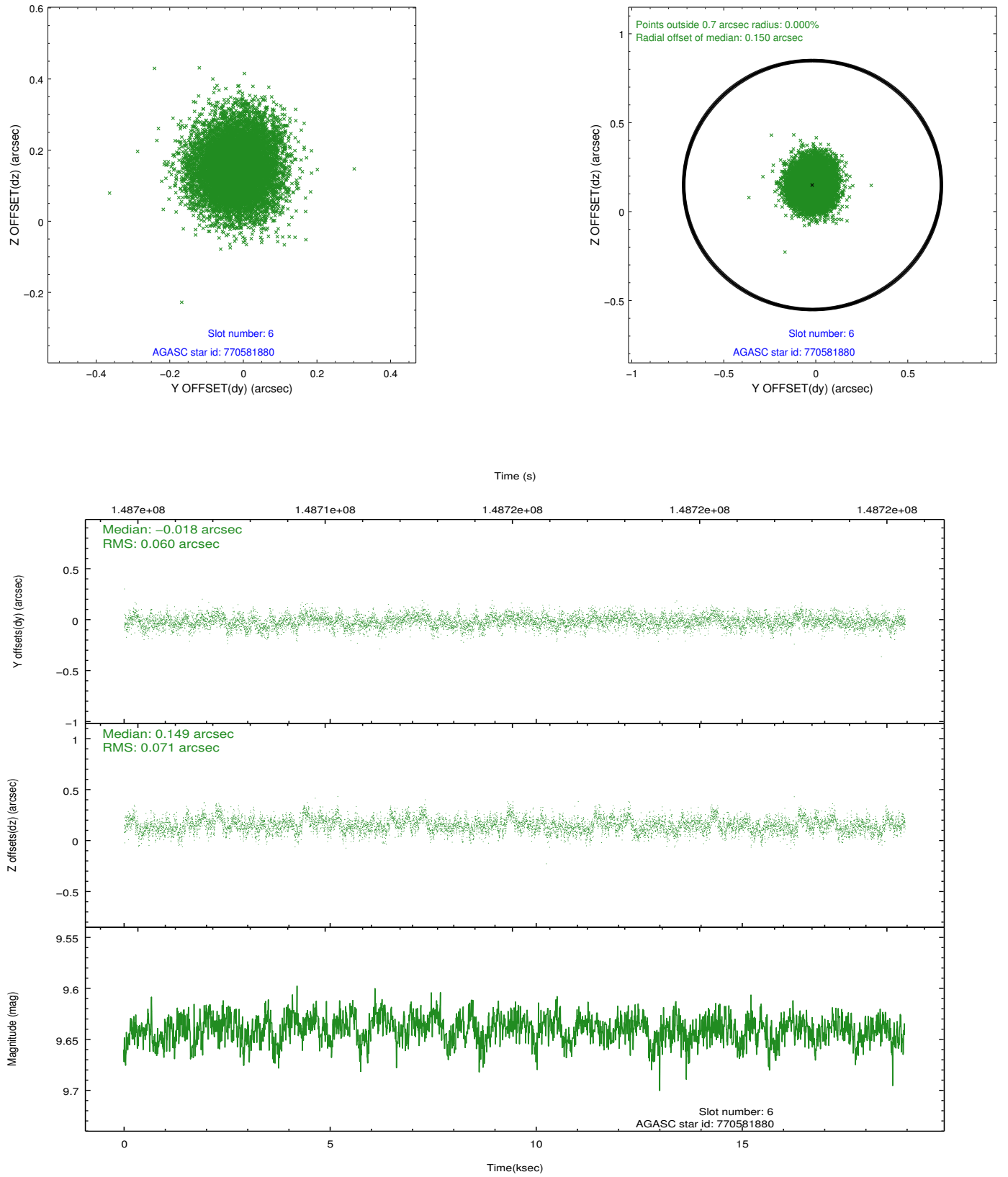
2.4.2 Slot 4



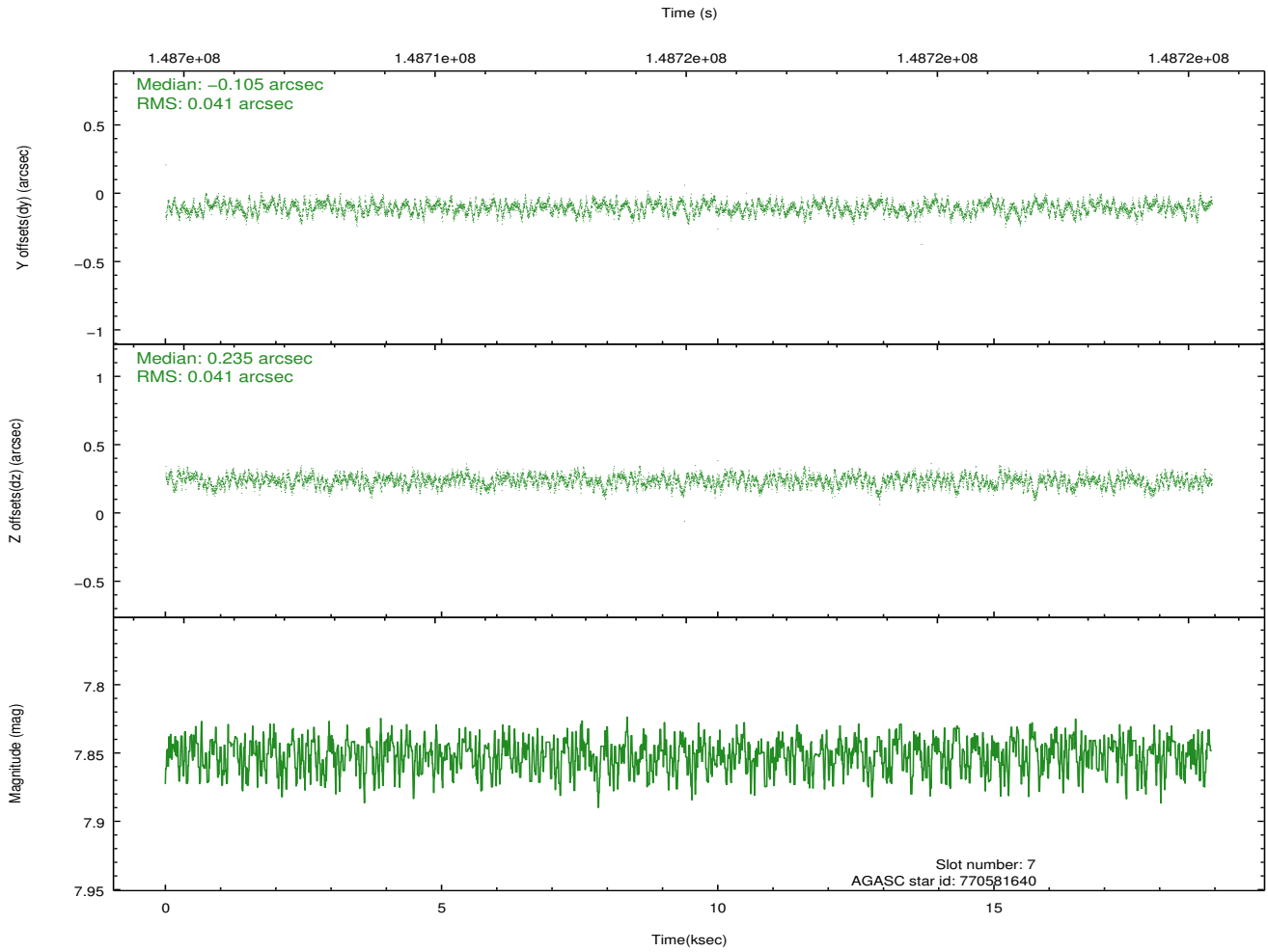
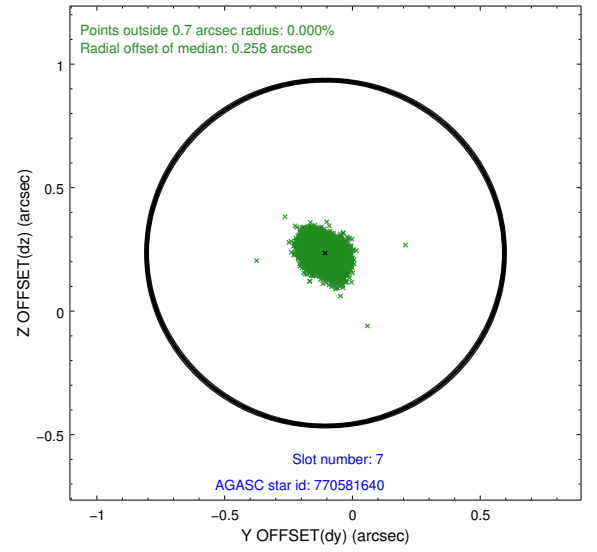
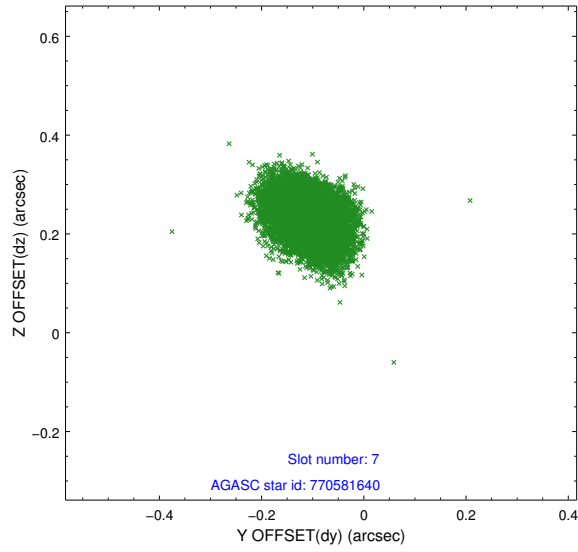
2.4.3 Slot 5



2.4.4 Slot 6

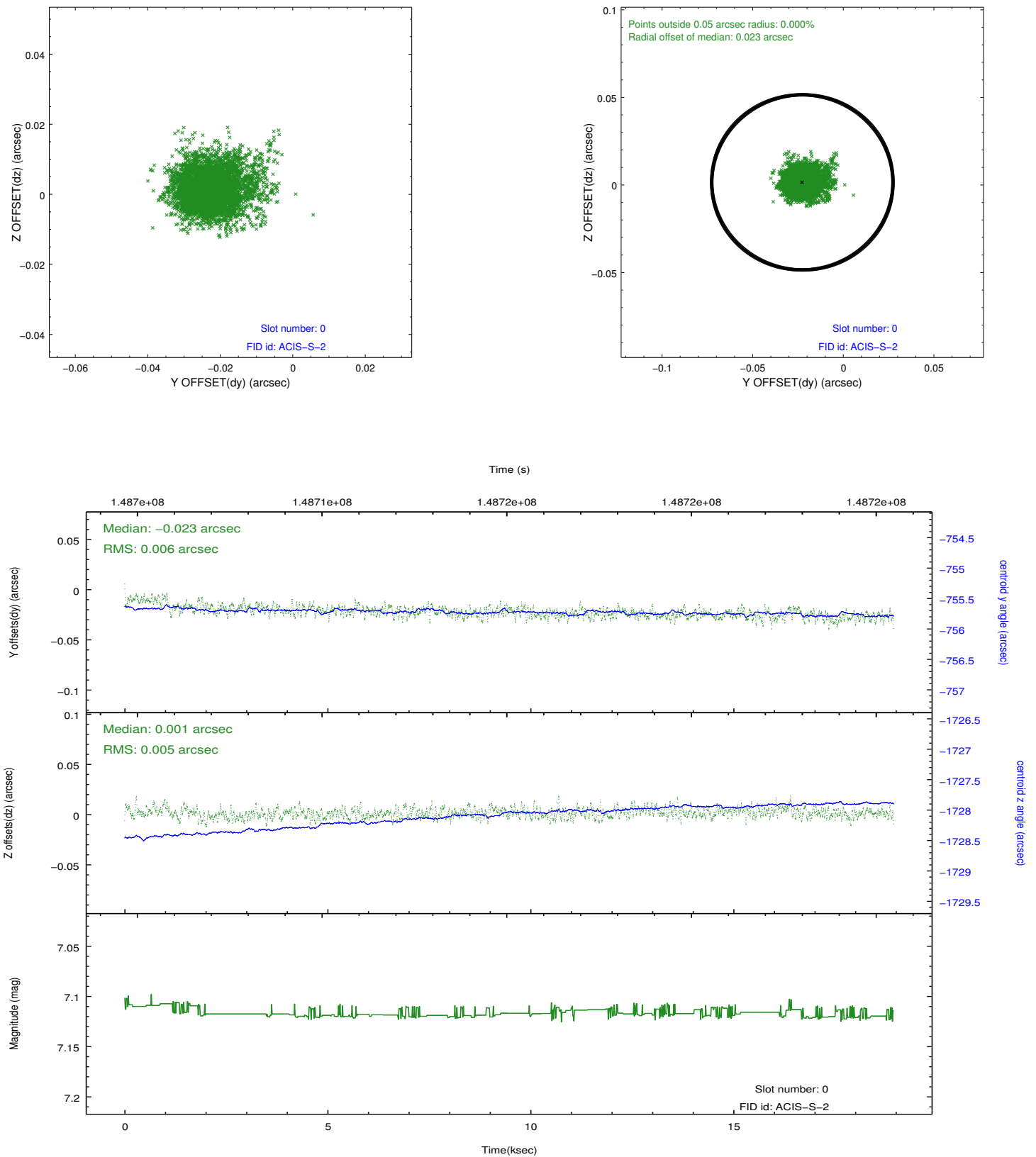


2.4.5 Slot 7

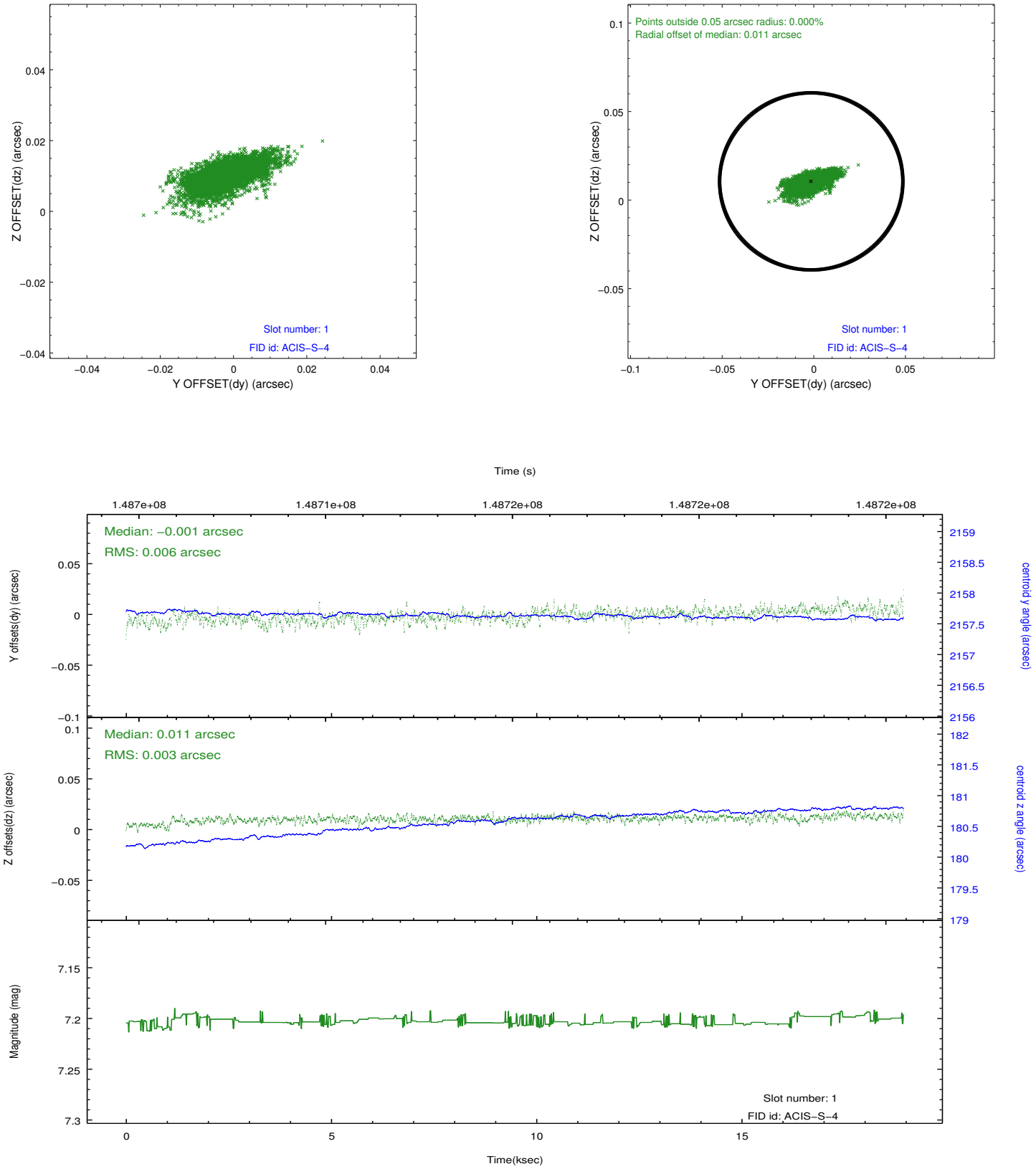


2.5 FID Slots

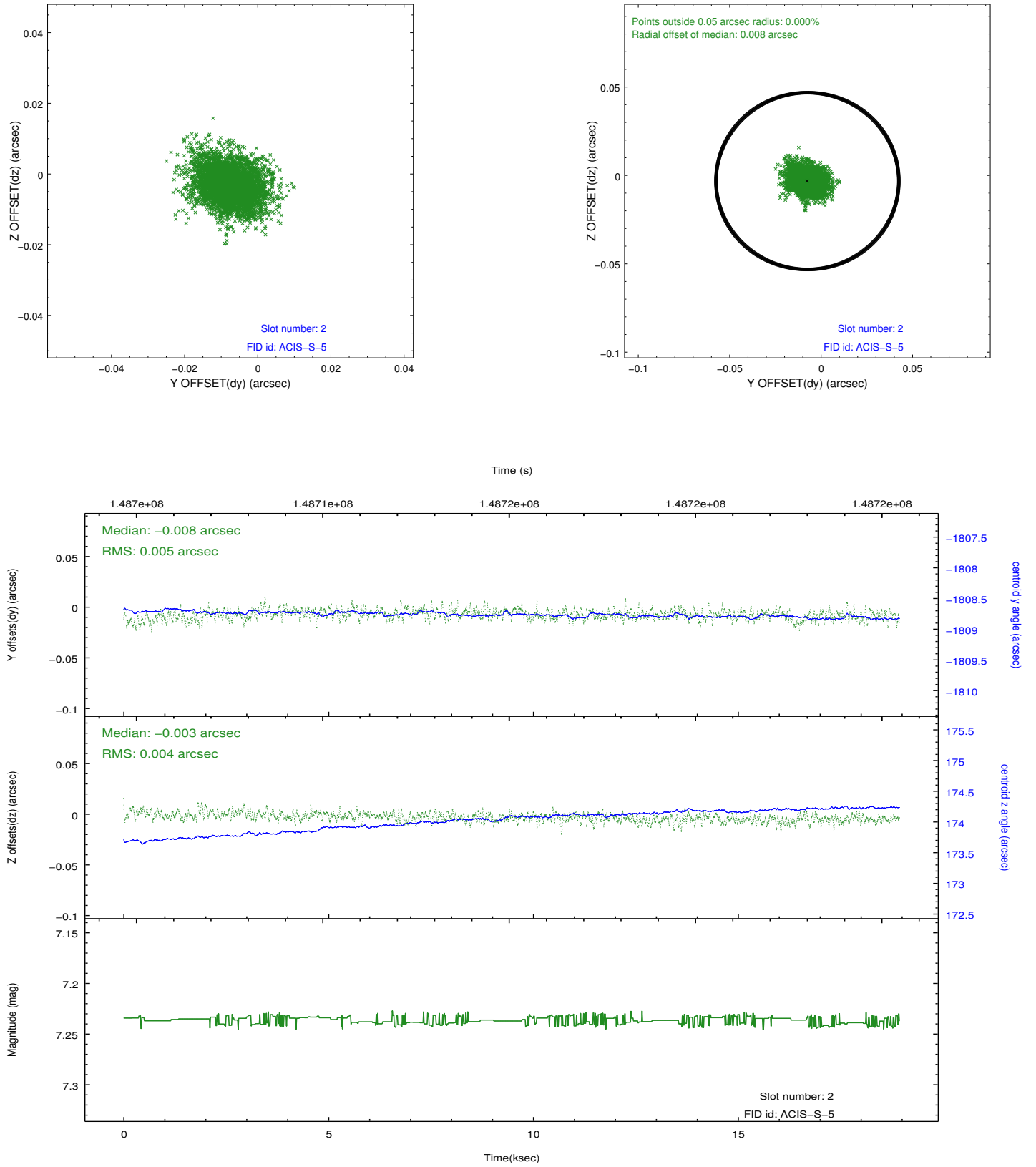
2.5.1 Slot 0



2.5.2 Slot 1



2.5.3 Slot 2



A Summary

A.1 Status

V&V Scientist	Beth Sundheim
V&V Date (YYYY-MM-DD)	2012.10.24
V&V Edition	1
V&V Disposition and Status	OK
V&V Charge Time	18.518

A.2 Comments