

V&V Reference Report

L2 ASCDS Version : 7.6.9

Observation 2900 - L2 Version 001
Chandra X-Ray Center

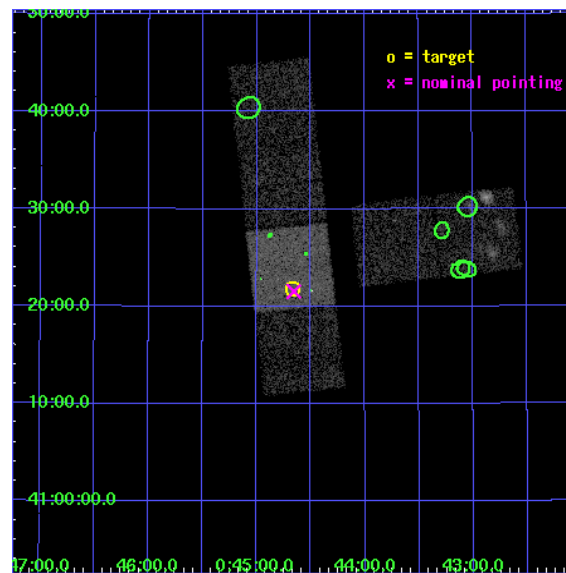
L2 Processing Date : Oct 13 2006

Contents

1	Front	2
2	OBI	3
2.1	OBI	3
2.1.1	Images	3
2.1.2	Bias	3
2.1.3	Parameters	4
2.1.4	Events	4
2.2	Compared Parameters	5
2.3	Aspect	6
2.4	Star Slots	9
2.4.1	Slot 3	9
2.4.2	Slot 4	10
2.4.3	Slot 5	11
2.4.4	Slot 6	12
2.4.5	Slot 7	13
2.5	FID Slots	14
2.5.1	Slot 0	14
2.5.2	Slot 1	15
2.5.3	Slot 2	16
3	Point Sources	17
A	Summary	18
A.1	Status	18
A.2	Comments	18

1 Front

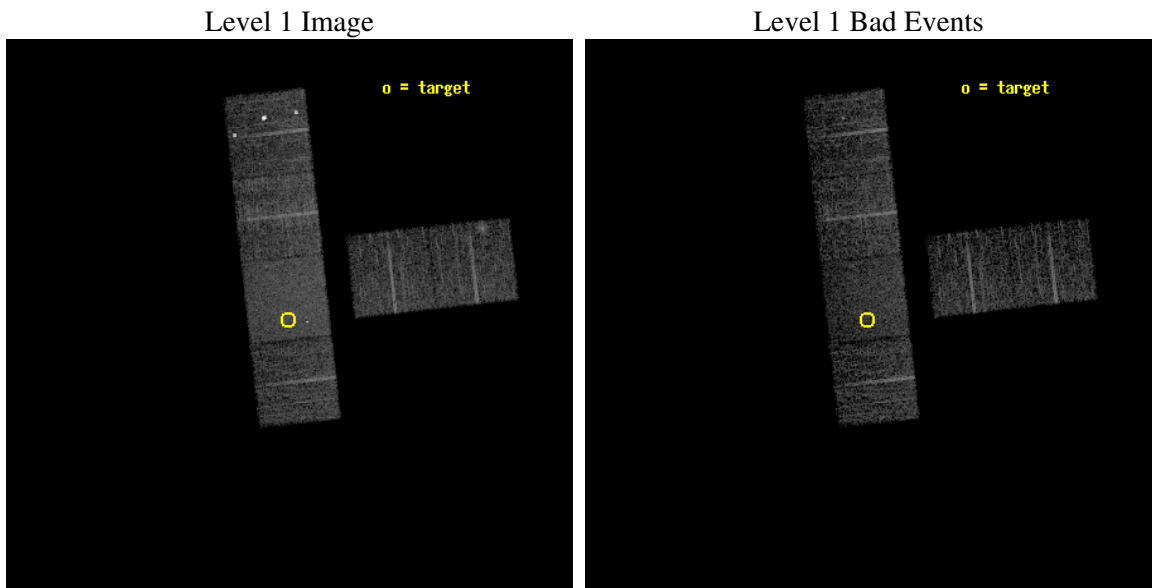
seq_num	600237
obs_id	2900
title	SEARCHING FOR X-RAY TRANSIENTS IN M31 WITH CHANDRA AND HST
observer	Dr. MICHAEL GARCIA
object	M31-T5
dtcycle	0
cycle	P
ra_targ	11.167
dec_targ	41.363
ra_nom	11.16410049709
dec_nom	41.359164412091
roll_nom	263.66075218926
revision	3
ontime	5180.7999807
livetime	5115.1975718412
ontime1	5180.7999807
ontime3	5180.7999807
ontime6	5180.7999807
ontime7	5180.7999807
ontime8	5180.7999807
ontime9	5180.7999807
l2events	37653



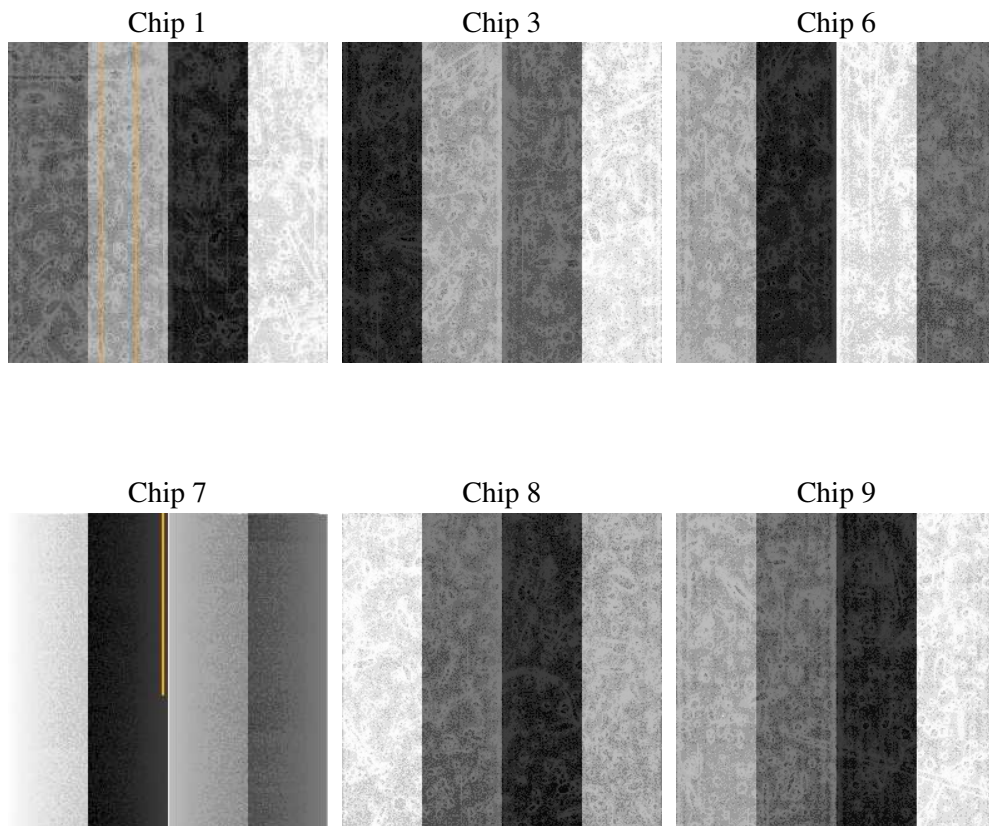
2 OBI

2.1 OBI

2.1.1 Images



2.1.2 Bias



2.1.3 Parameters

obi_num	1
ascdsver	7.6.9
caldbver	3.2.3
date	2006-10-13T13:07:00
revision	3

sched_exp_time	5000.000000
ontime	5399.5084152222
ontime1	5399.5084152222
ontime3	5399.5084152222
ontime6	5399.5084152222
ontime7	5399.5084152222
ontime8	5399.5084152222
ontime9	5399.5084152222
l1events	234844

2.1.4 Events

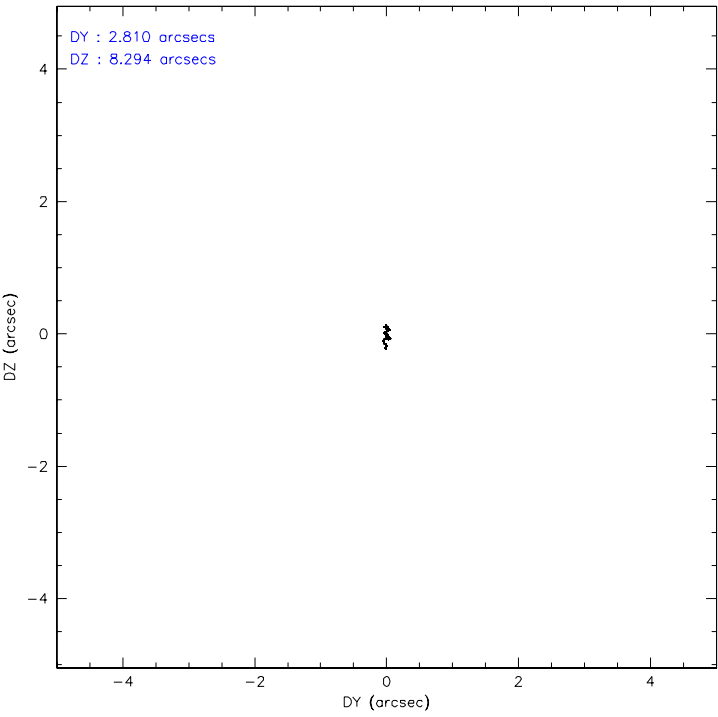
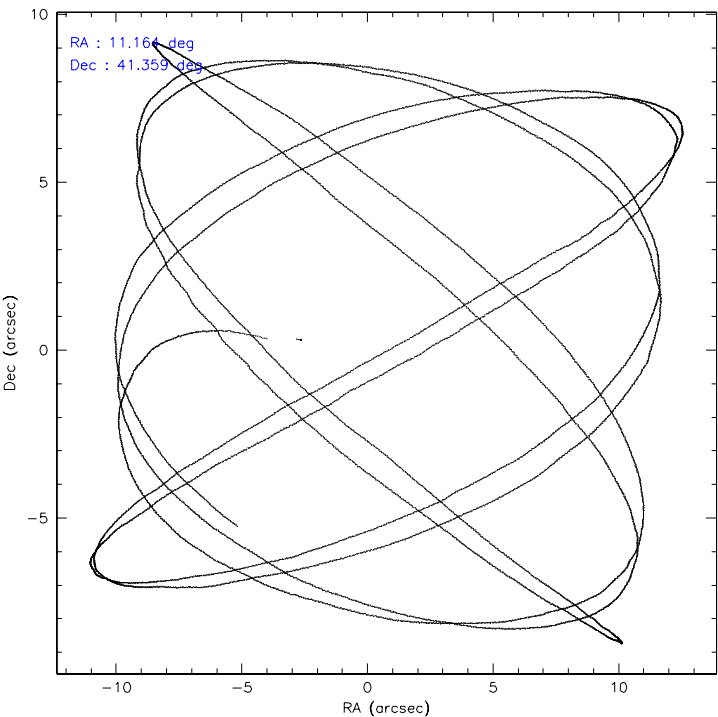
	ccd 1	ccd 3	ccd 6	ccd 7	ccd 8	ccd 9
level 1 events	33582	32675	34148	46663	43652	44124
rejected events	27969	28694	29989	28610	34371	29163
rejected %	83%	87%	87%	61%	78%	66%

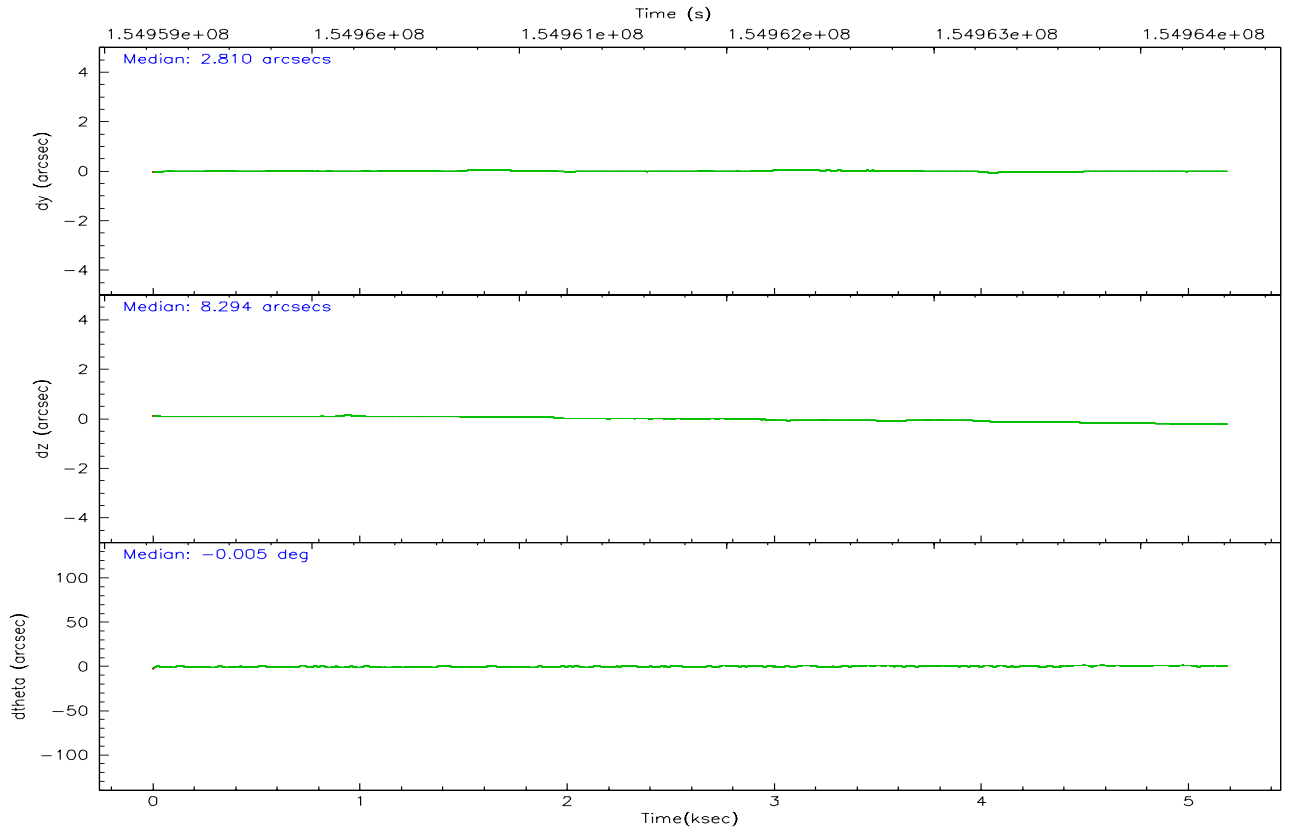
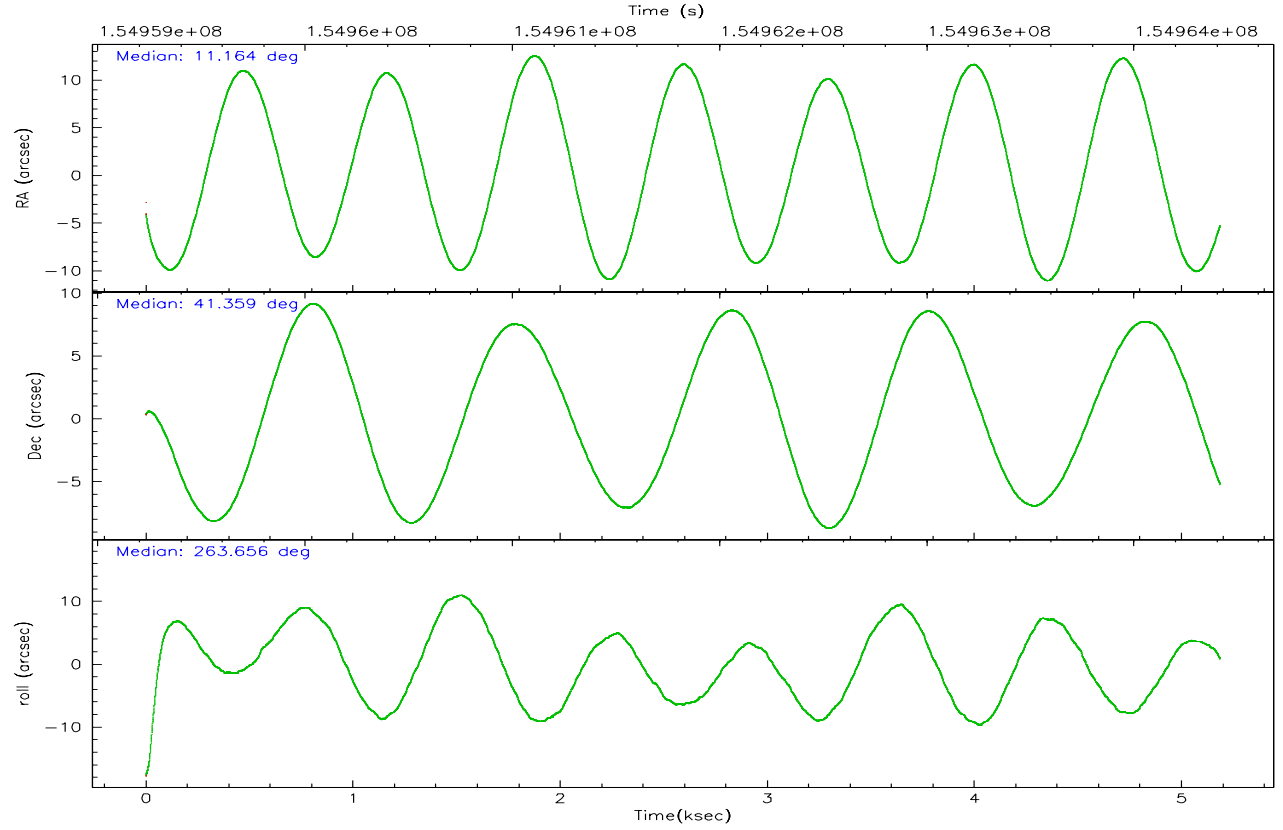
	ccd 1	ccd 3	ccd 6	ccd 7	ccd 8	ccd 9
grade 0 events	2986	1867	1847	1380	3204	13072
	8%	5%	5%	2%	7%	29%
grade 1 events	25	24	16	30	28	95
	0%	0%	0%	0%	0%	0%
grade 2 events	1105	808	918	4520	2070	844
	3%	2%	2%	9%	4%	1%
grade 3 events	464	392	368	1029	1018	400
	1%	1%	1%	2%	2%	0%
grade 4 events	466	393	373	1024	964	482
	1%	1%	1%	2%	2%	1%
grade 5 events	1431	1425	1437	2964	1915	1531
	4%	4%	4%	6%	4%	3%
grade 6 events	815	709	813	10874	2445	821
	2%	2%	2%	23%	5%	1%
grade 7 events	26290	27057	28376	24842	32008	26879
	78%	82%	83%	53%	73%	60%

2.2 Compared Parameters

Parameter	Planned	Actual	Parameter	Planned	Actual
Instrument	ACIS	ACIS	Obspar format version number	6	6
Detector	ACIS-136789	ACIS-136789	Obspar file type	PREDICTED	ACTUAL
Grating	NONE	NONE	Obspar update status	NONE	UPDATED
Data mode	FAINT	FAINT	Number of optional ACIS chips dropped	0	0
Observation mode	POINTING	POINTING	On-chip summing requested	N	N
Pointing RA	11.149176	11.16410049709001	Subarray requested	NONE	NONE
Pointing Dec	41.383980	41.35916441209122	Alternating exposures requested	N	N
Pointing Roll	263.514023	263.6607521892599	Primary exposure time	0.000000	3.2
Window start time	154526464.184000	154526464.184000			
Window stop time	155131264.184000	155131264.184000			
SIM focus pos (mm)	-0.684267	-0.6828225247311905			
SIM defocus (mm)	0	0.001444936568705701			
SIM translation stage pos (mm)	-190.132523	-190.1400660498719			
SIM translation stage offset (mm)	0	0.00754346686406393			
Observation start time	154959419.184000	154958243.40008			
Observation start date	2002-11-29T12:15:55	2002-11-29T11:57:23			
Observation end time	154964419.184000	154965080.66287			
Observation end date	2002-11-29T13:39:15	2002-11-29T13:51:20			
Read mode	TIMED	TIMED			

2.3 Aspect



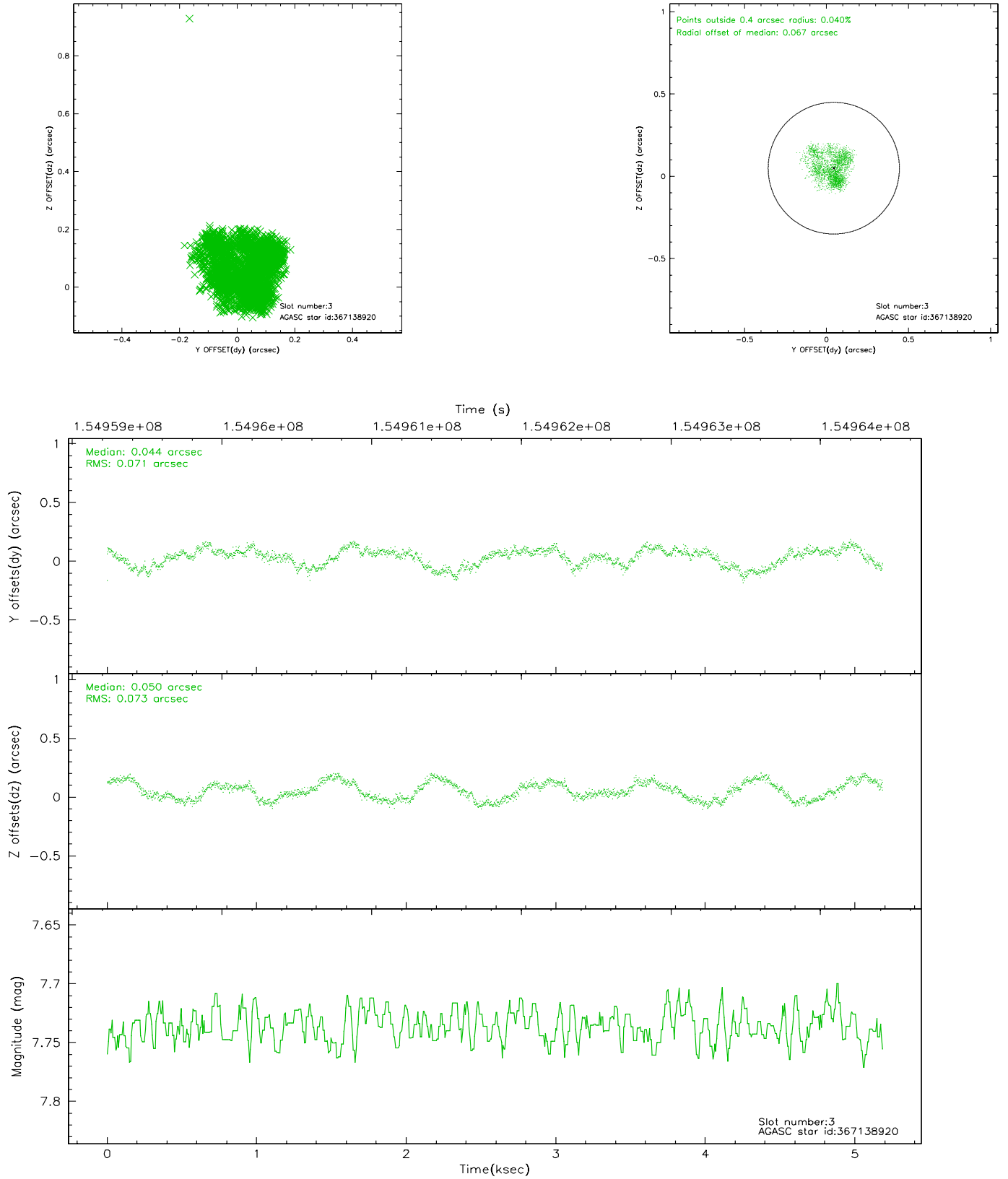


Slot Statistics

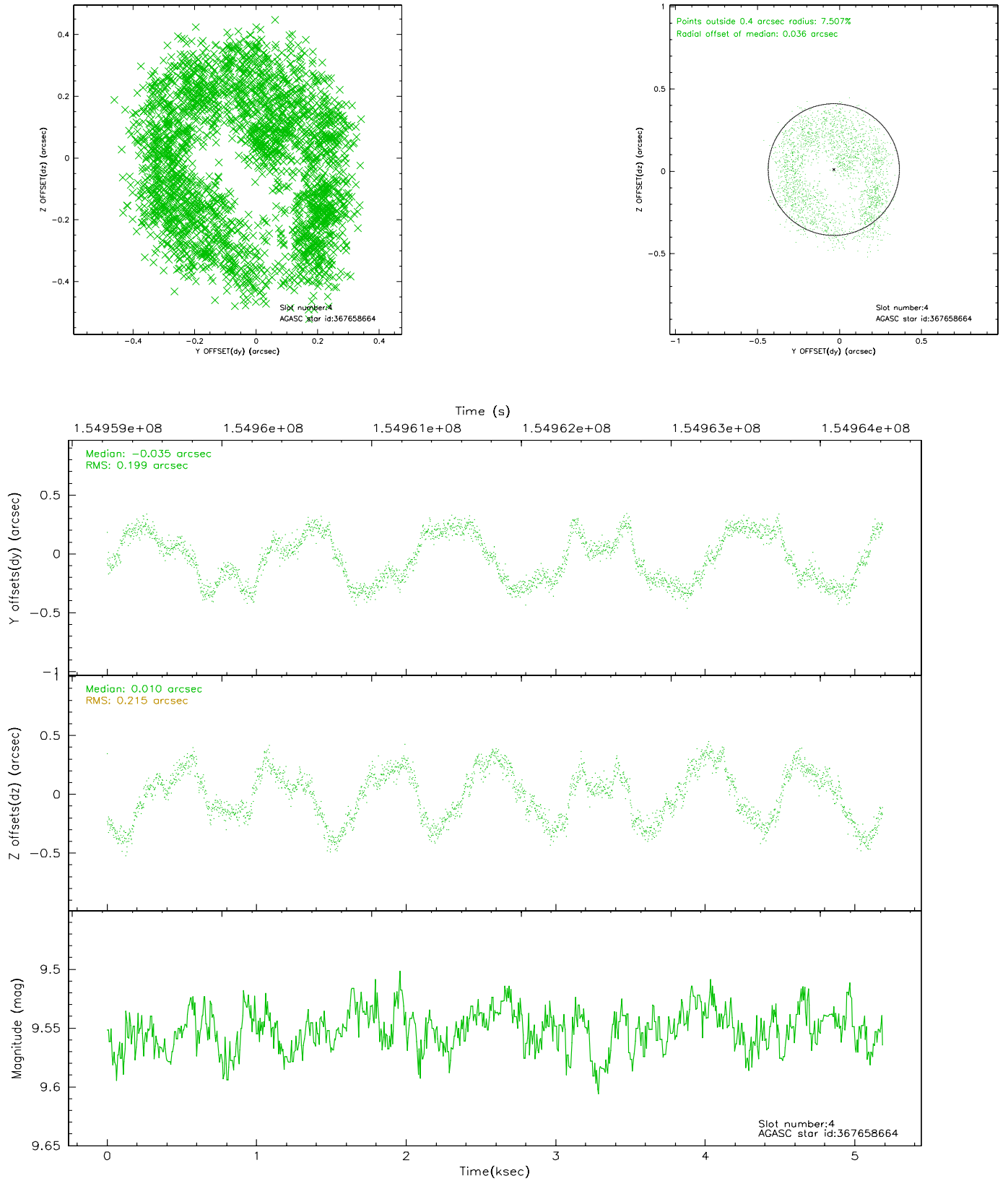
slot	status	id	mag	n_pts	med_dy	med_dz	dr1	dr2	ra	dec	mean_y	mean_z
0	FID	ACIS-S-1	7.19	1266	0.012	0.030	0.008	0.014	0.000000	0.000000	940.58	-1725.09
1	FID	ACIS-S-5	7.24	1265	0.015	0.039	0.006	0.010	0.000000	0.000000	-1807.73	171.31
2	FID	ACIS-S-6	7.35	1265	-0.049	-0.057	0.008	0.013	0.000000	0.000000	404.85	816.47
3	GUIDE	367138920	7.74	2529	0.044	0.050	0.109	0.166	11.513485	40.808909	1942.58	1219.50
4	GUIDE	367658664	9.55	2531	-0.035	0.010	0.324	0.419	10.374070	41.369746	278.75	-2076.40
5	GUIDE	367663272	9.29	2531	0.019	-0.077	0.123	0.179	10.656279	41.699429	-982.39	-1447.28
6	GUIDE	367146616	8.85	2531	0.049	-0.031	0.120	0.173	11.418645	41.190163	608.96	802.50
7	GUIDE	367664016	9.38	2530	-0.061	0.068	0.110	0.176	12.105776	41.954692	-2345.22	2310.54

2.4 Star Slots

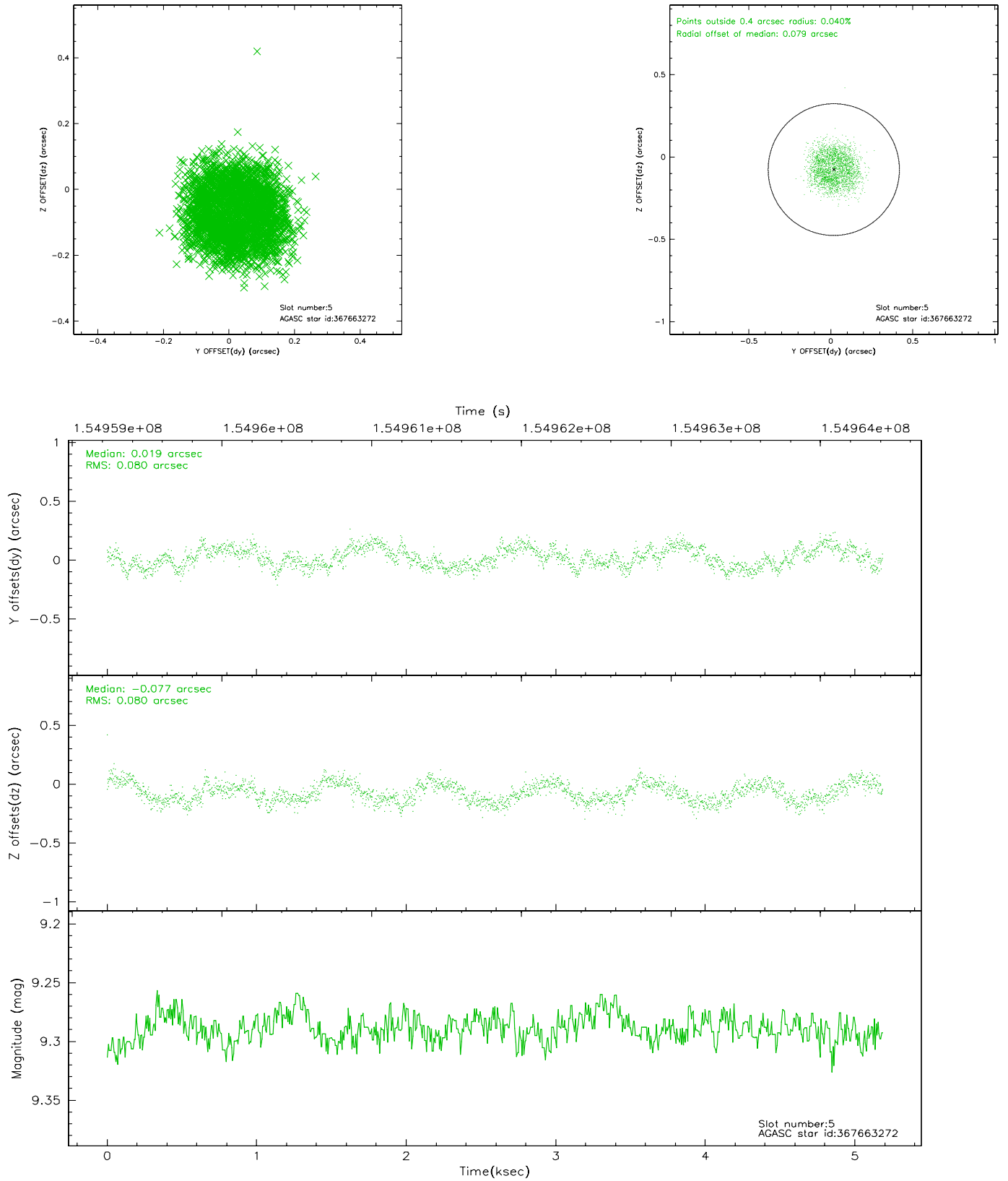
2.4.1 Slot 3



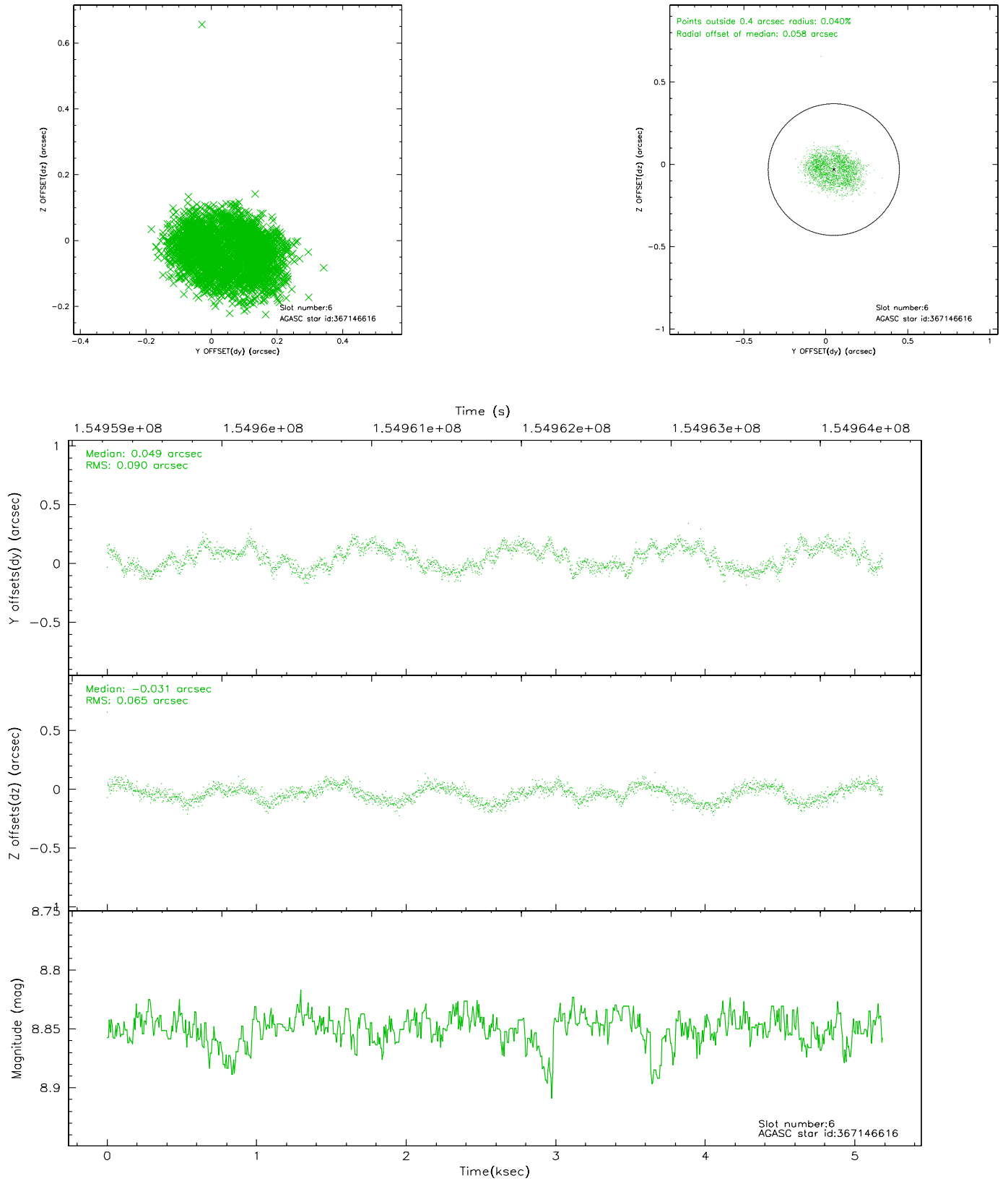
2.4.2 Slot 4



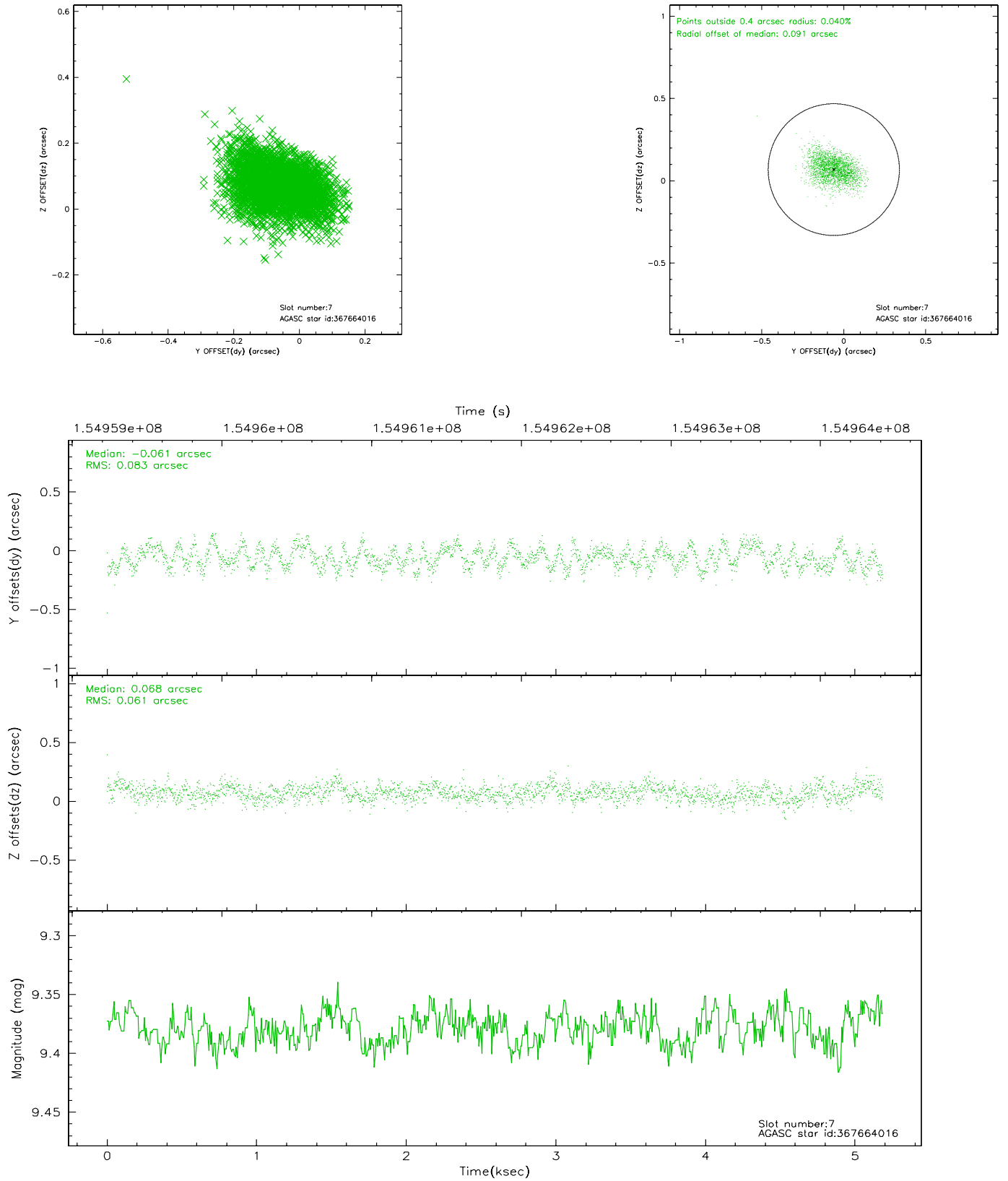
2.4.3 Slot 5



2.4.4 Slot 6

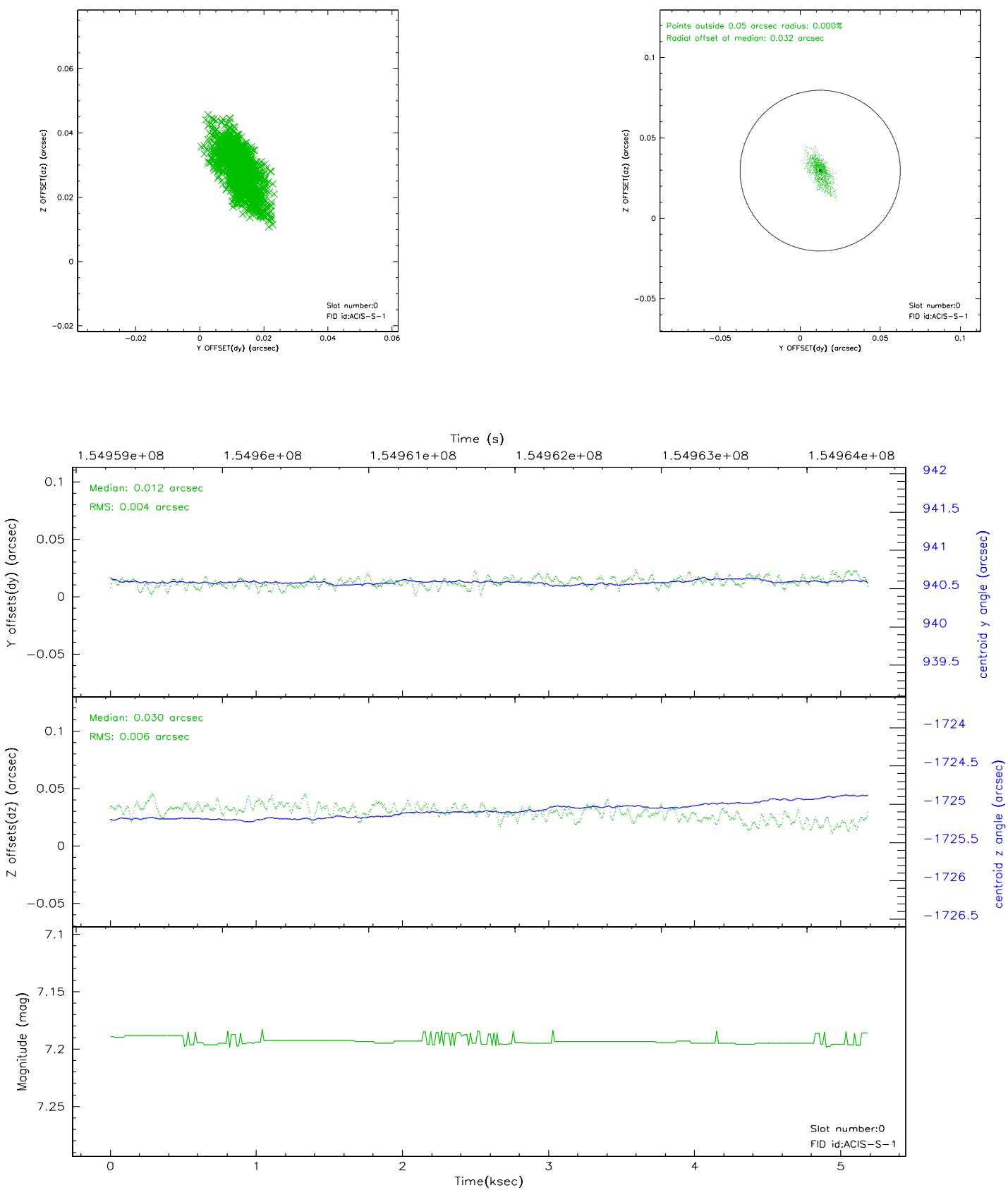


2.4.5 Slot 7

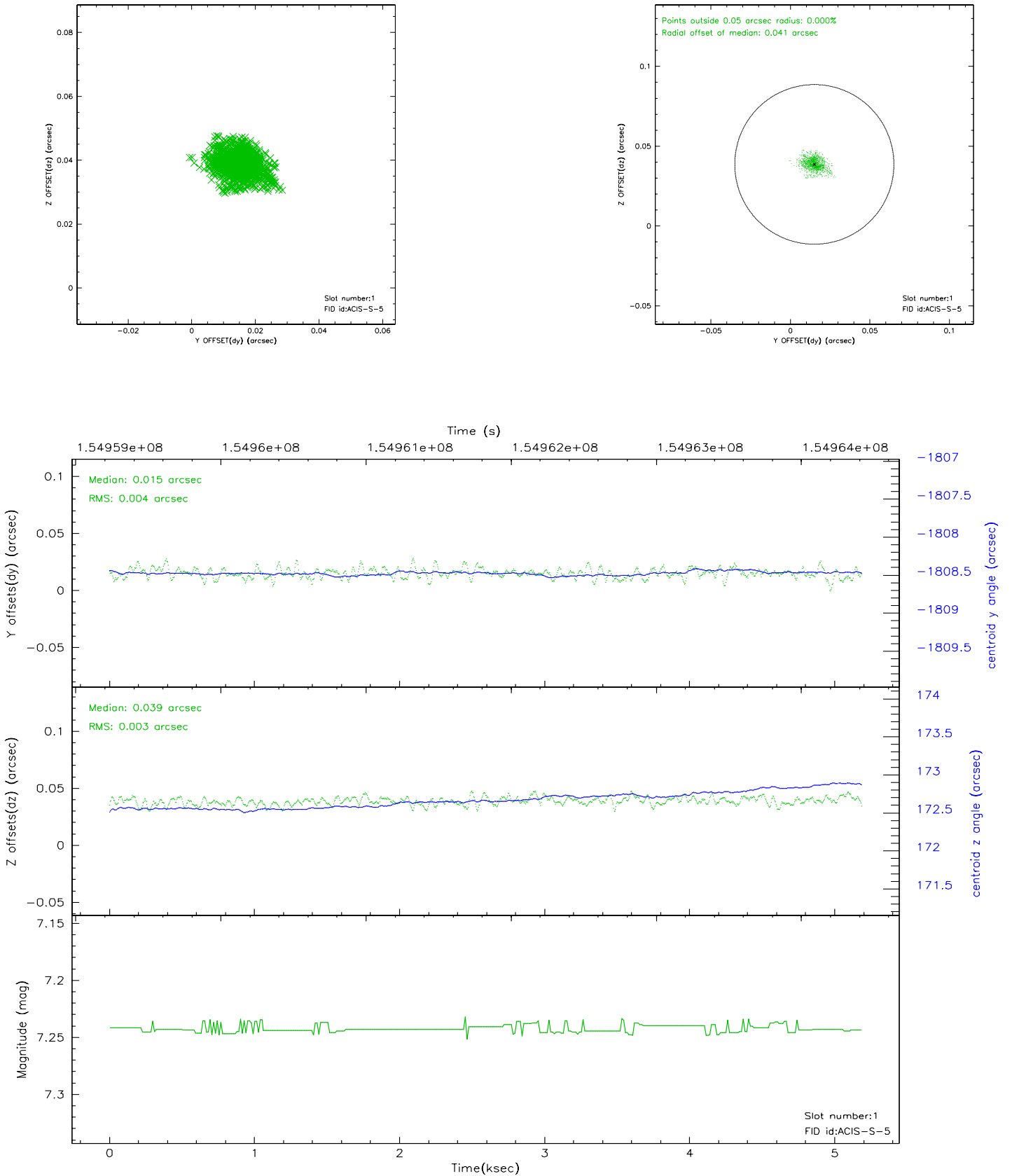


2.5 FID Slots

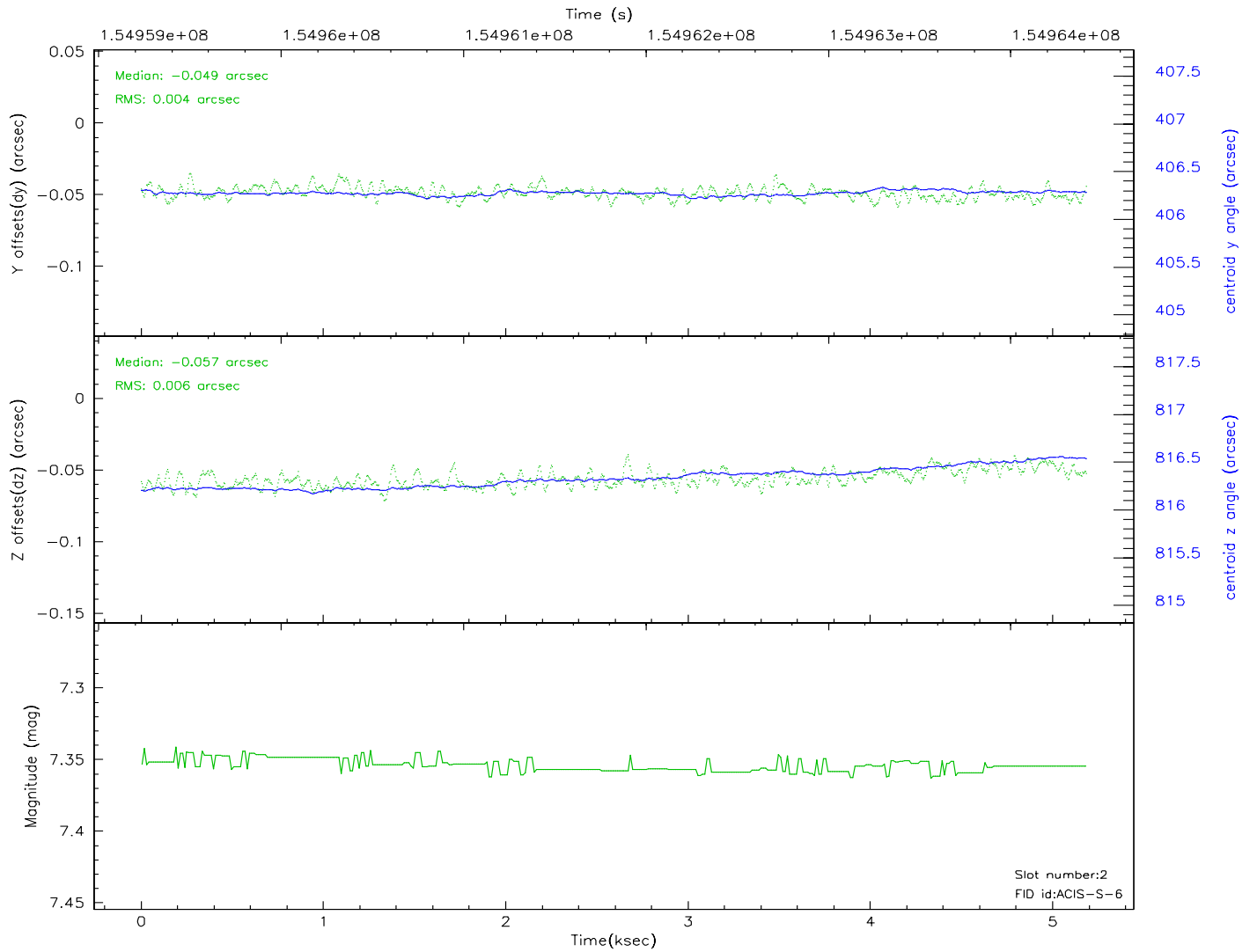
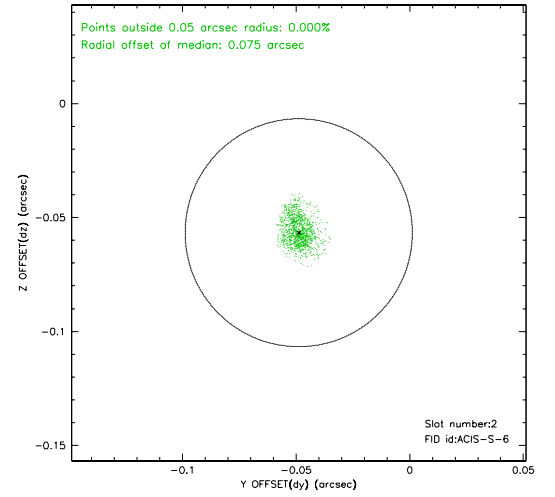
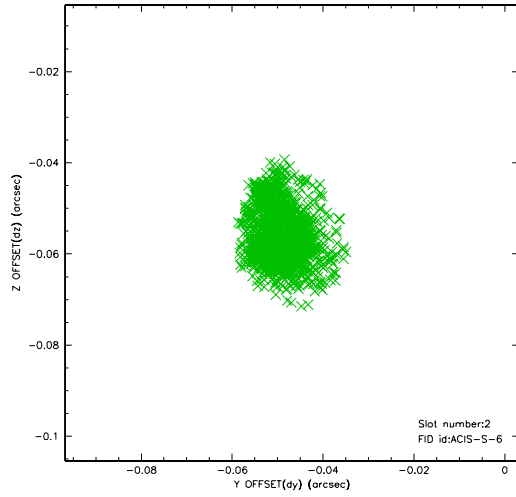
2.5.1 Slot 0



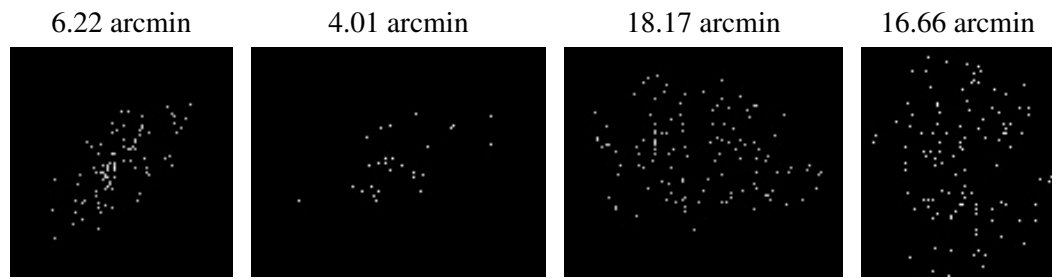
2.5.2 Slot 1



2.5.3 Slot 2



3 Point Sources



A Summary

A.1 Status

V&V Scientist	Beth Sundheim
V&V Date (YYYY-MM-DD)	2006.10.13
V&V Edition	1
V&V Disposition and Status	OK
V&V Charge Time	5.18

A.2 Comments

Window constraint OK.