

V&V Reference Report

L2 ASCDS Version : 7.6.9

Observation 2899 - L2 Version 001
Chandra X-Ray Center

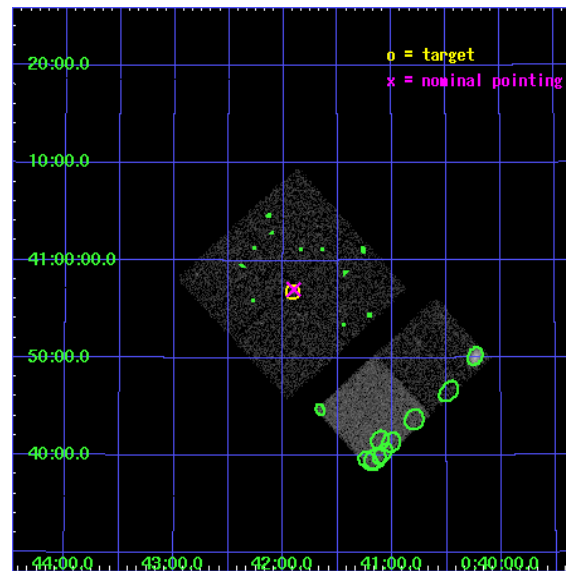
L2 Processing Date : Sep 28 2006

Contents

1	Front	2
2	OBI	3
2.1	OBI	3
2.1.1	Images	3
2.1.2	Bias	3
2.1.3	Parameters	4
2.1.4	Events	4
2.2	Compared Parameters	5
2.3	Aspect	6
2.4	Star Slots	9
2.4.1	Slot 3	9
2.4.2	Slot 4	10
2.4.3	Slot 5	11
2.4.4	Slot 6	12
2.4.5	Slot 7	13
2.5	FID Slots	14
2.5.1	Slot 0	14
2.5.2	Slot 1	15
2.5.3	Slot 2	16
3	Point Sources	17
A	Summary	18
A.1	Status	18
A.2	Comments	18

1 Front

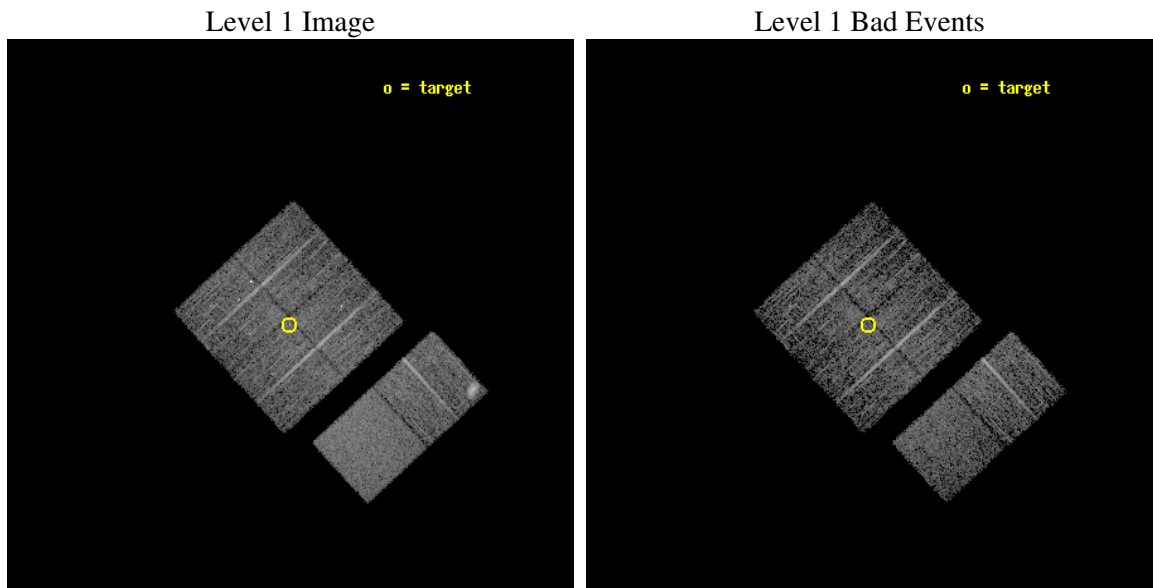
seq_num	600236
obs_id	2899
title	SEARCHING FOR X-RAY TRANSIENTS IN M31 WITH CHANDRA AND HST
observer	Dr. MICHAEL GARCIA
object	M31-T5
dtcycle	0
cycle	P
ra_targ	10.477879
dec_targ	40.946611
ra_nom	10.47542425183
dec_nom	40.950785712672
roll_nom	137.40439353808
revision	2
ontime	4963.1999815106
livetime	4900.3529548645
ontime0	4963.1999815106
ontime1	4963.1999815106
ontime2	4963.1999815106
ontime3	4963.1999815106
ontime6	4963.1999815106
ontime7	4963.1999815106
l2events	34239



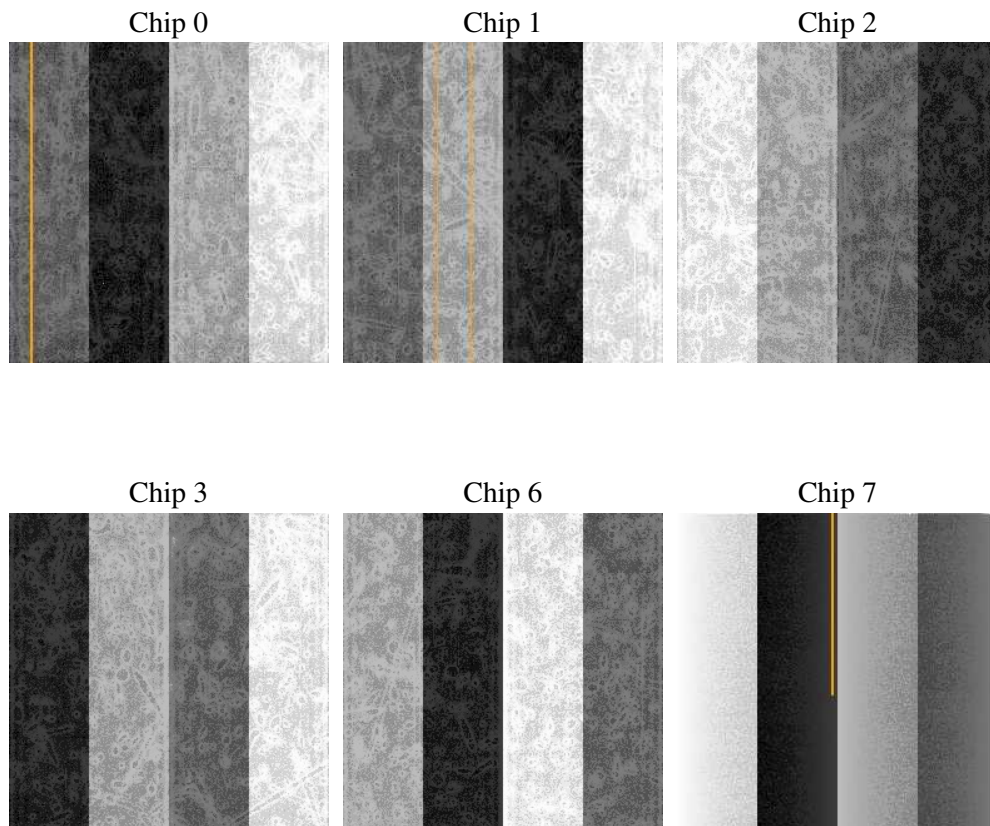
2 OBI

2.1 OBI

2.1.1 Images



2.1.2 Bias



2.1.3 Parameters

obi_num	1
ascdsver	7.6.9
caldsver	3.2.3
date	2006-09-28T17:39:50
revision	2

sched_exp_time	5000.000000
ontime	4968.4614850581
ontime0	4968.4614850581
ontime1	4968.4614651501
ontime2	4968.4614850581
ontime3	4968.4614850581
ontime6	4968.4614651501
ontime7	4968.4614850581
l1events	189098

2.1.4 Events

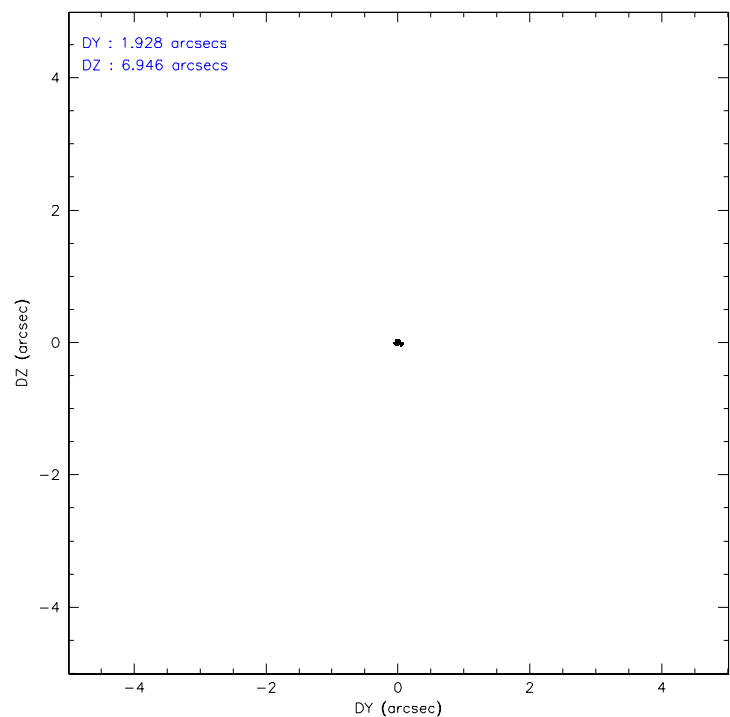
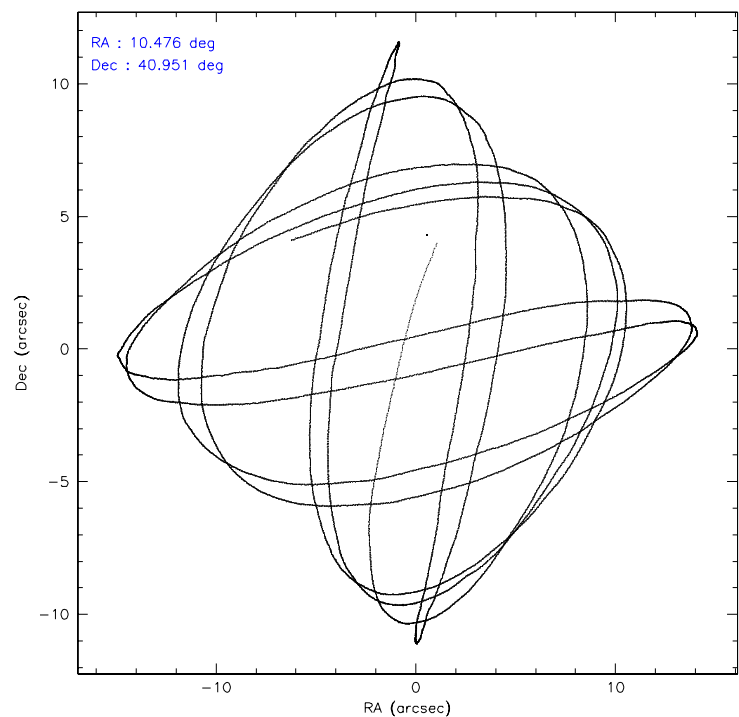
	ccd 0	ccd 1	ccd 2	ccd 3	ccd 6	ccd 7
level 1 events	27317	29636	30912	29532	33592	38109
rejected events	23341	24552	27005	25706	27615	23551
rejected %	85%	82%	87%	87%	82%	61%

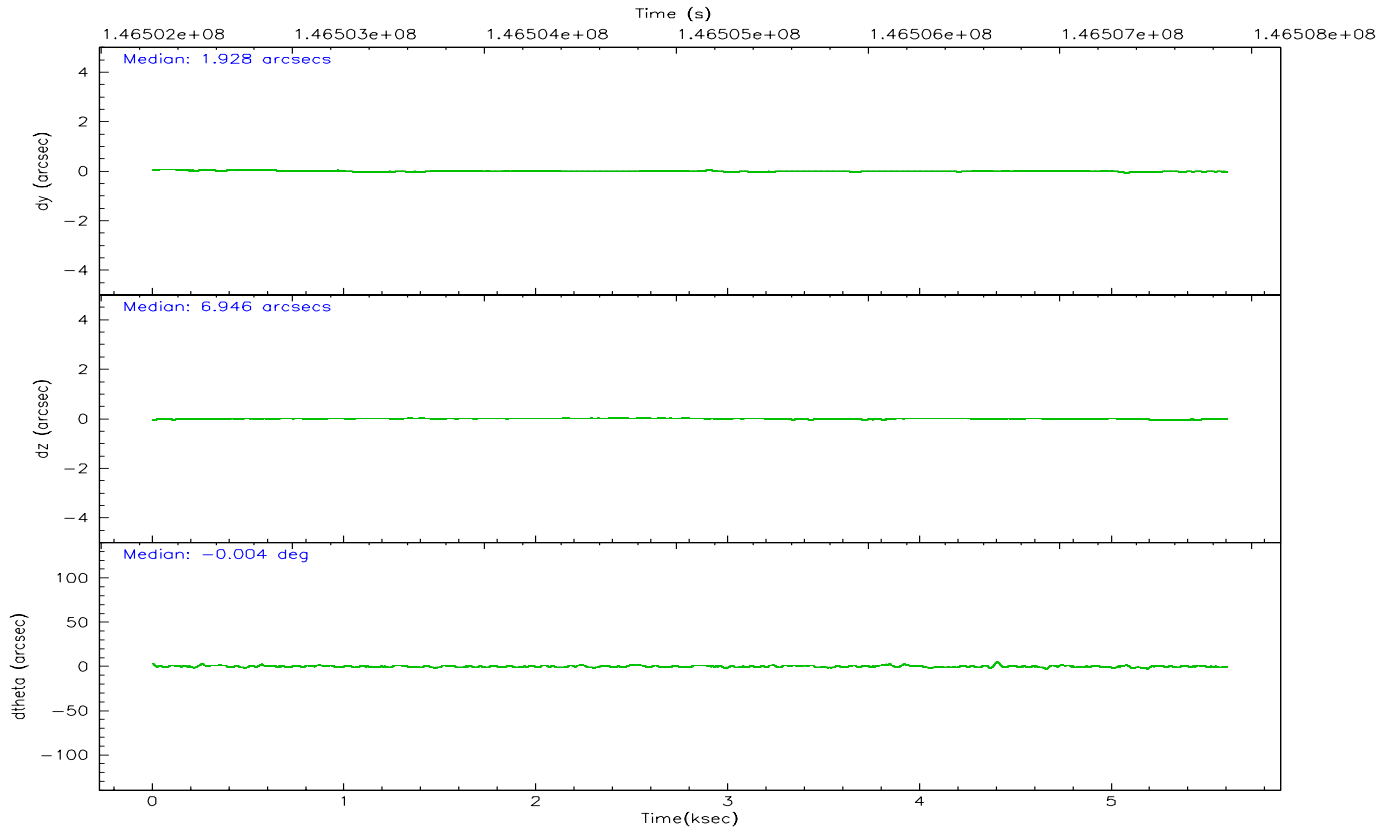
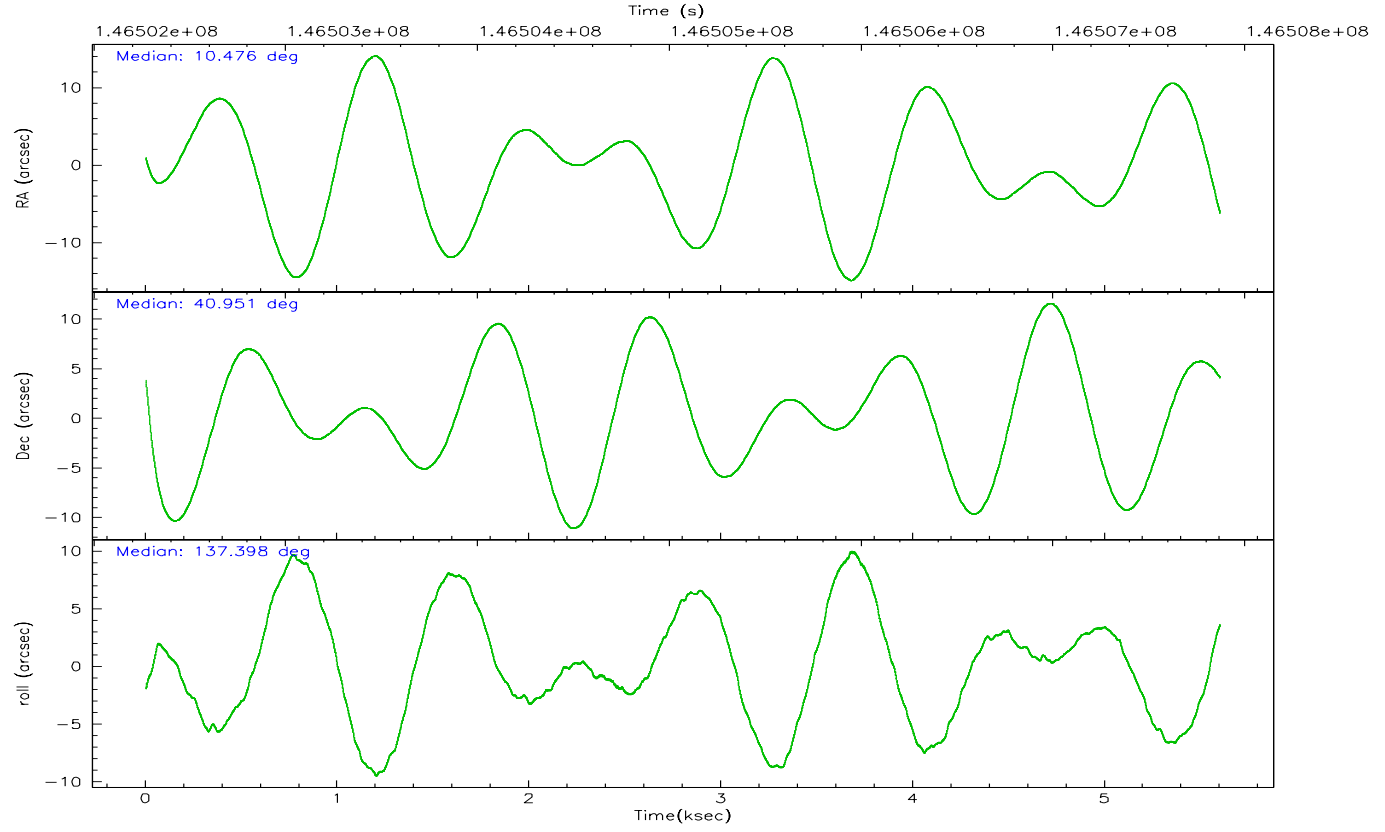
	ccd 0	ccd 1	ccd 2	ccd 3	ccd 6	ccd 7
grade 0 events	1798	2418	1906	1765	3315	922
	6%	8%	6%	5%	9%	2%
grade 1 events	18	26	16	18	20	22
	0%	0%	0%	0%	0%	0%
grade 2 events	836	1035	772	716	1034	3475
	3%	3%	2%	2%	3%	9%
grade 3 events	358	425	301	353	431	753
	1%	1%	0%	1%	1%	1%
grade 4 events	354	441	317	369	427	731
	1%	1%	1%	1%	1%	1%
grade 5 events	1081	1195	1069	1234	1286	2514
	3%	4%	3%	4%	3%	6%
grade 6 events	631	772	612	628	781	8700
	2%	2%	1%	2%	2%	22%
grade 7 events	22241	23324	25919	24449	26298	20992
	81%	78%	83%	82%	78%	55%

2.2 Compared Parameters

Parameter	Planned	Actual	Parameter	Planned	Actual
Instrument	ACIS	ACIS	Obspar format version number	6	6
Detector	ACIS-012367	ACIS-012367	Obspar file type	PREDICTED	ACTUAL
Grating	NONE	NONE	Obspar update status	NONE	UPDATED
Data mode	FAINT	FAINT	Number of optional ACIS chips dropped	0	0
Observation mode	POINTING	POINTING	On-chip summing requested	N	N
Pointing RA	10.510748	10.47542425183011	Subarray requested	NONE	NONE
Pointing Dec	40.944967	40.95078571267171	Alternating exposures requested	N	N
Pointing Roll	137.172553	137.4043935380828	Primary exposure time	0.000000	3.2
Window start time	144720064.184000	144720064.184000			
Window stop time	146707264.184000	146707264.184000			
SIM focus pos (mm)	-0.782348	-0.7809083437167272			
SIM defocus (mm)	0	0.001439871863259334			
SIM translation stage pos (mm)	-233.592463	-233.5874344608287			
SIM translation stage offset (mm)	0	-0.005018542100998502			
Observation start time	146502876.184000	146501707.58699			
Observation start date	2002-08-23T15:13:32	2002-08-23T14:55:07			
Observation end time	146507876.184000	146508637.61228			
Observation end date	2002-08-23T16:36:52	2002-08-23T16:50:37			
Read mode	TIMED	TIMED			

2.3 Aspect



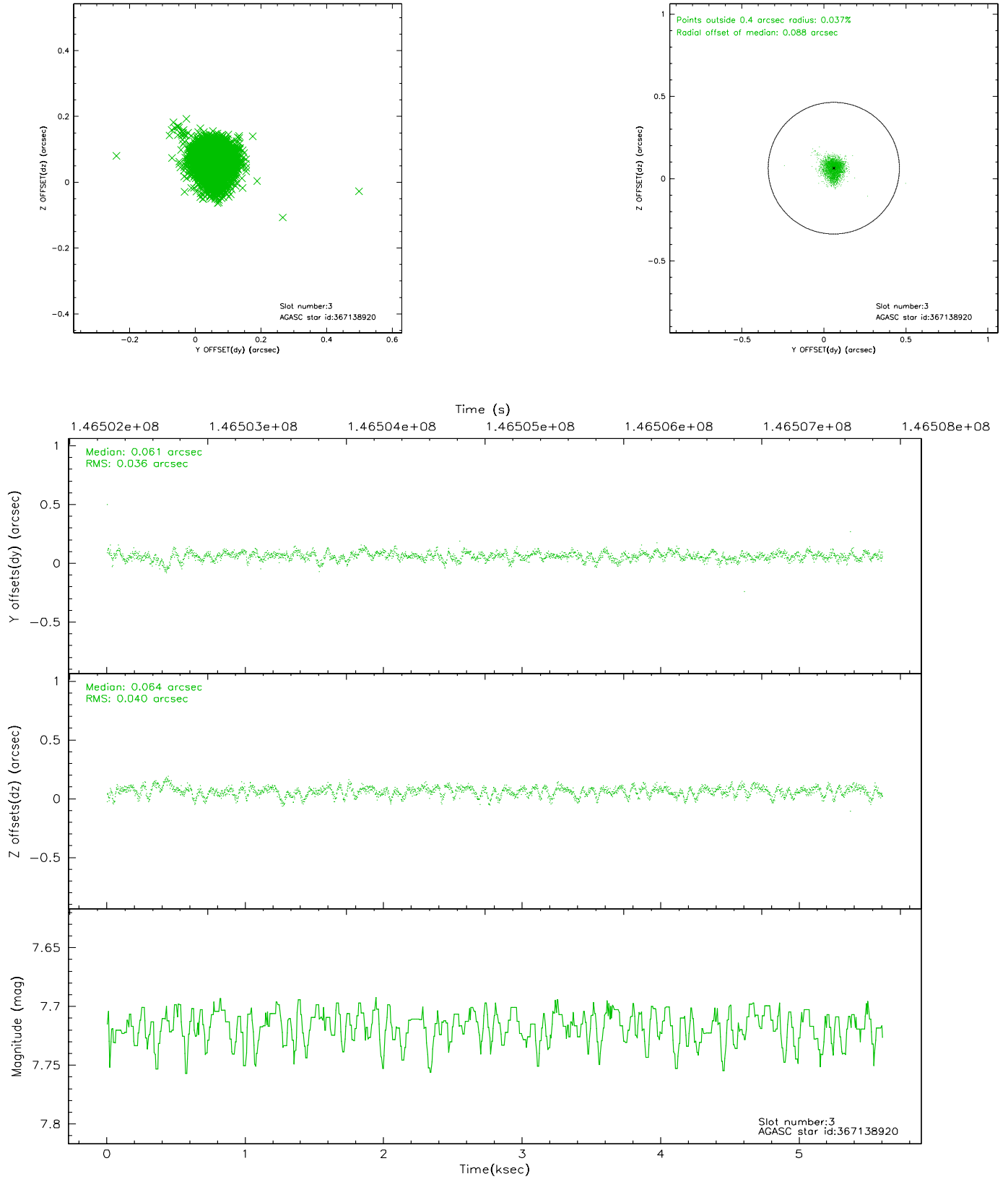


Slot Statistics

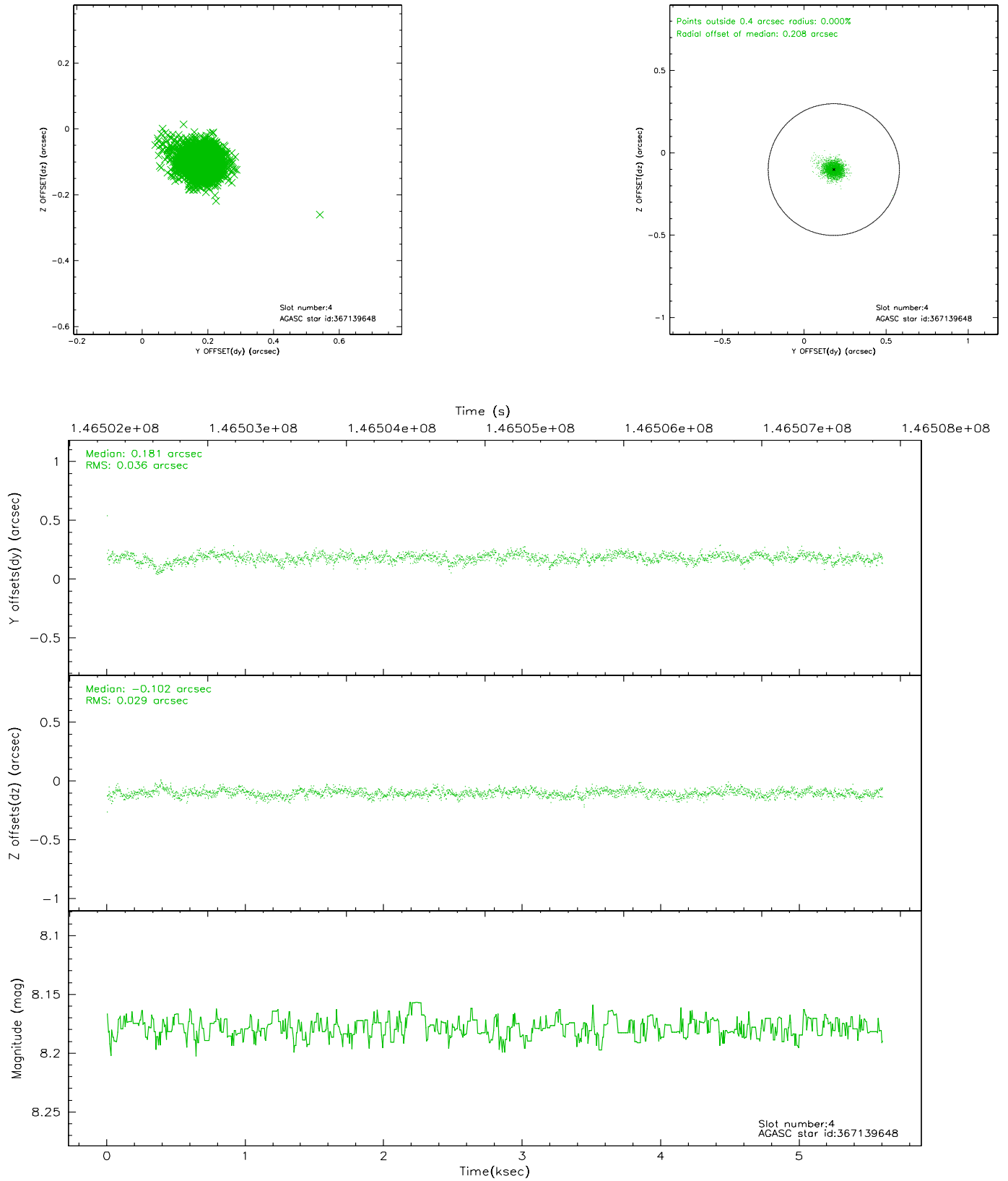
slot	status	id	mag	n_pts	med_dy	med_dz	dr1	dr2	ra	dec	mean_y	mean_z
0	FID	ACIS-I-1	7.25	1366	-0.098	0.018	0.008	0.014	0.000000	0.000000	937.82	-830.29
1	FID	ACIS-I-2	7.15	1366	-0.009	-0.005	0.006	0.010	0.000000	0.000000	-755.58	-837.34
2	FID	ACIS-I-4	7.18	1365	0.008	0.054	0.006	0.010	0.000000	0.000000	2157.28	1069.05
3	GUIDE	367138920	7.72	2733	0.061	0.064	0.055	0.090	11.513485	40.808909	-2324.33	-1509.26
4	GUIDE	367139648	8.18	2732	0.181	-0.102	0.047	0.078	11.021290	40.433909	-2272.81	395.06
5	GUIDE	367144424	8.64	2733	0.125	-0.227	0.071	0.113	10.464515	40.309136	-1461.91	1765.43
6	GUIDE	367663272	9.30	2668	-0.228	0.214	0.095	0.155	10.656279	41.699429	1561.13	-2256.47
7	GUIDE	367658664	9.59	2731	-0.139	0.057	0.082	0.138	10.374070	41.369746	1313.01	-870.76

2.4 Star Slots

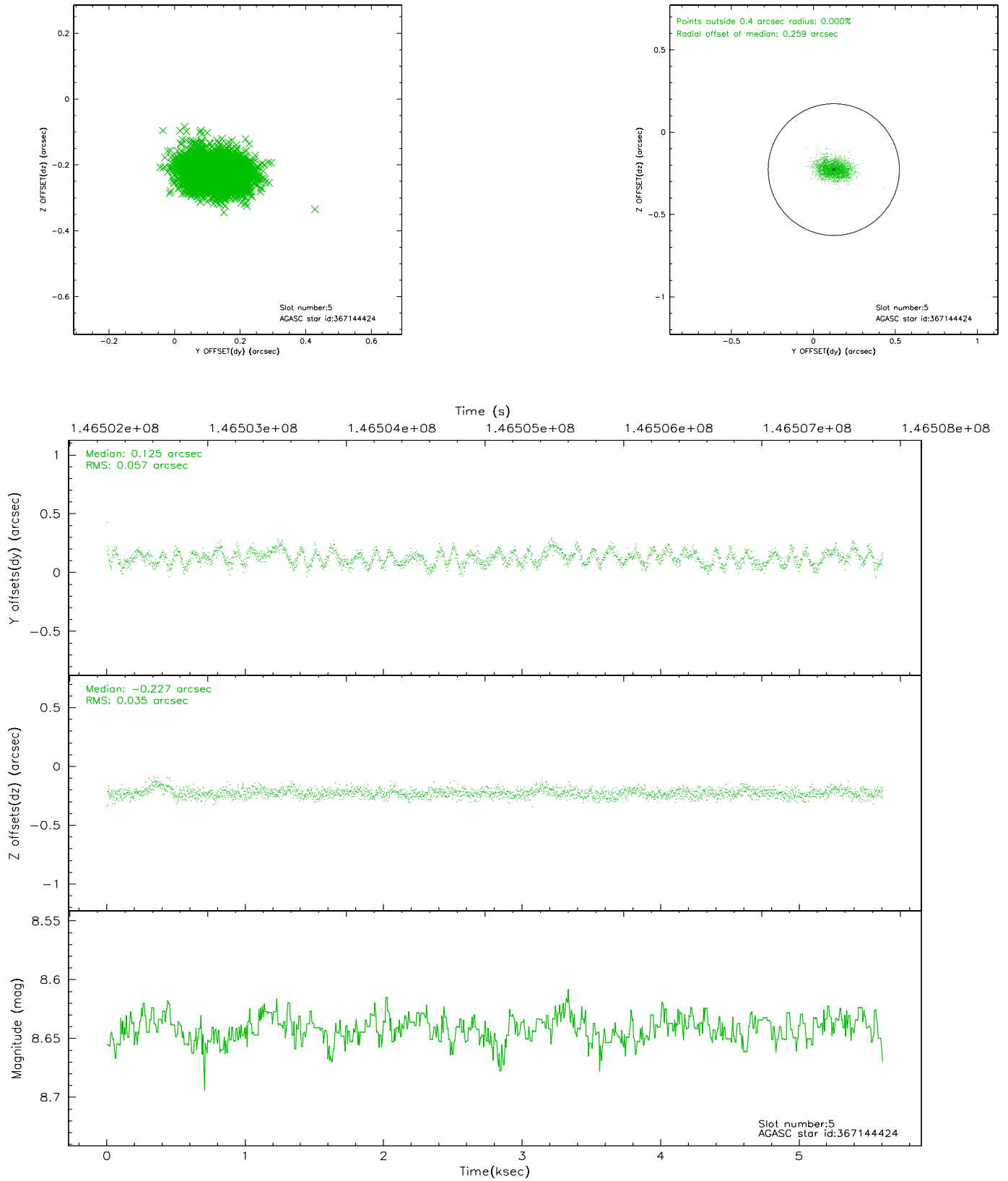
2.4.1 Slot 3



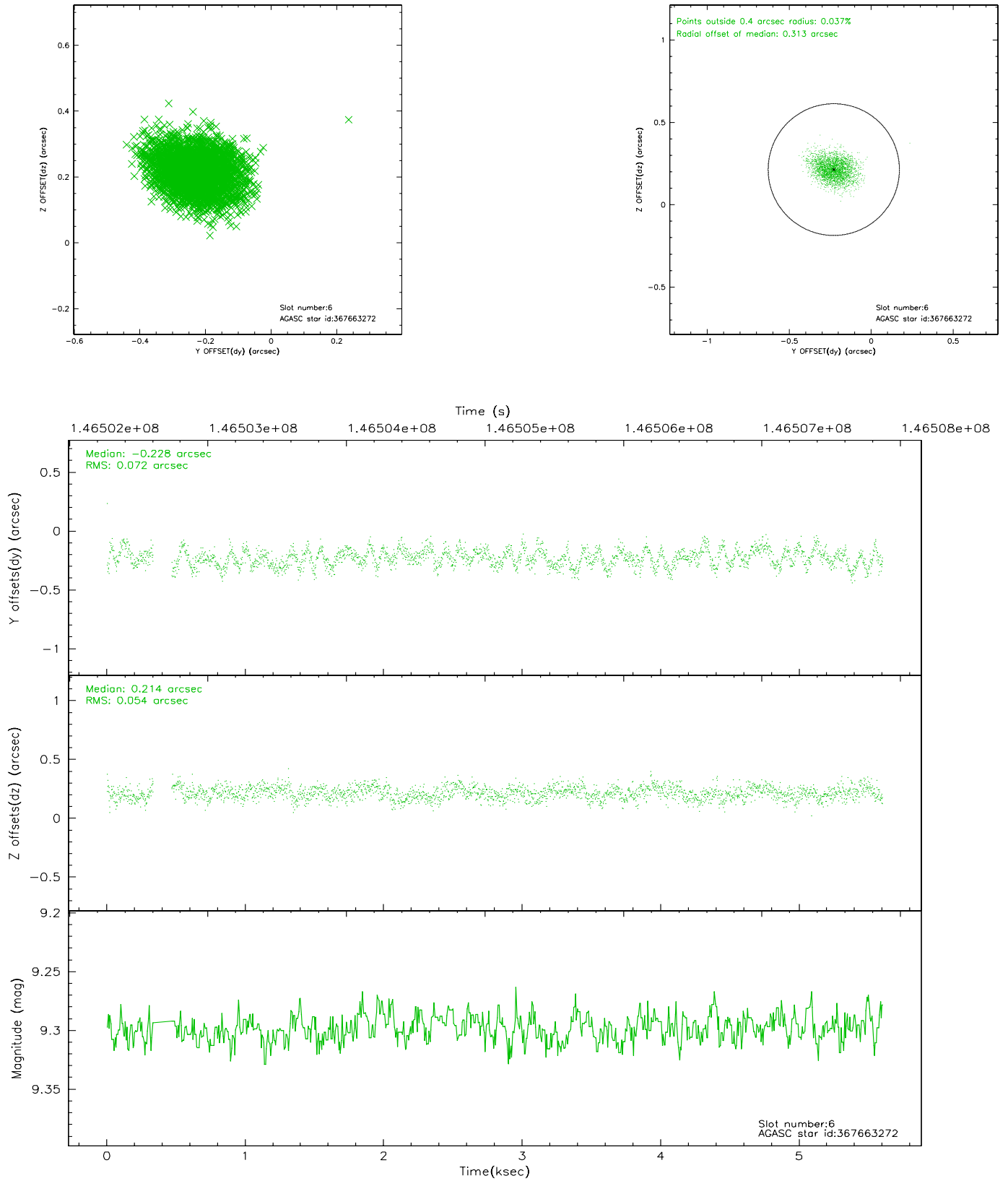
2.4.2 Slot 4



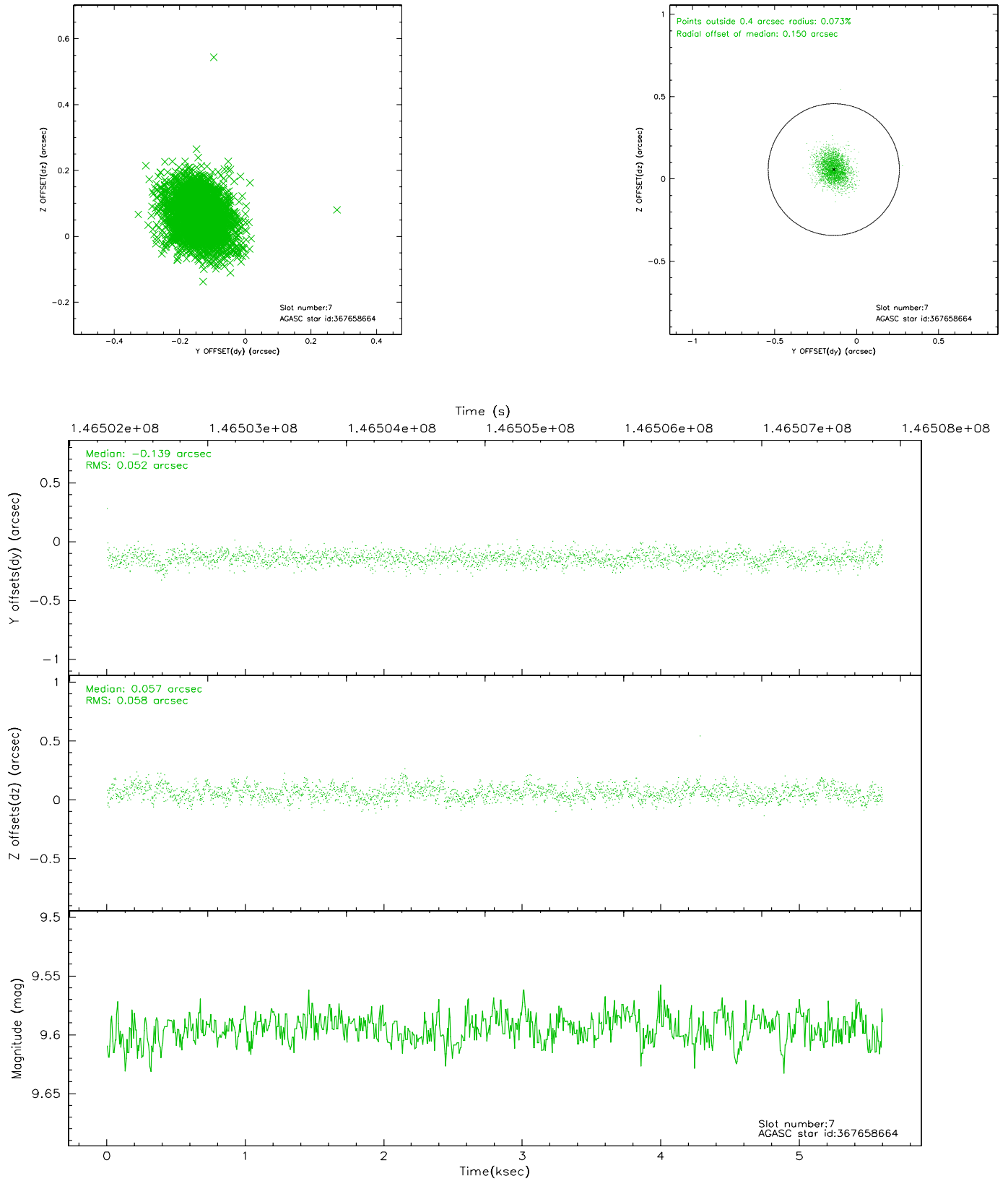
2.4.3 Slot 5



2.4.4 Slot 6

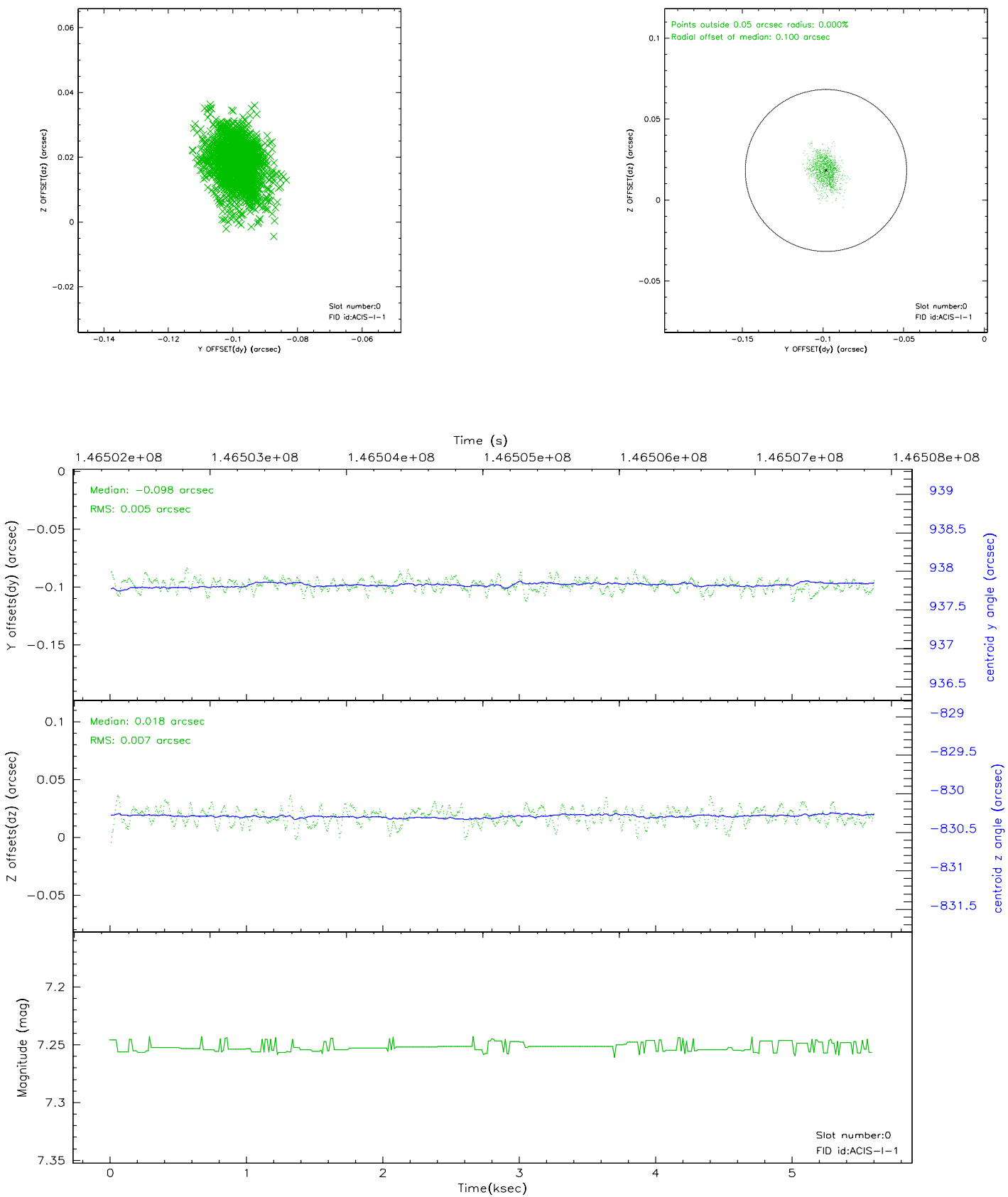


2.4.5 Slot 7

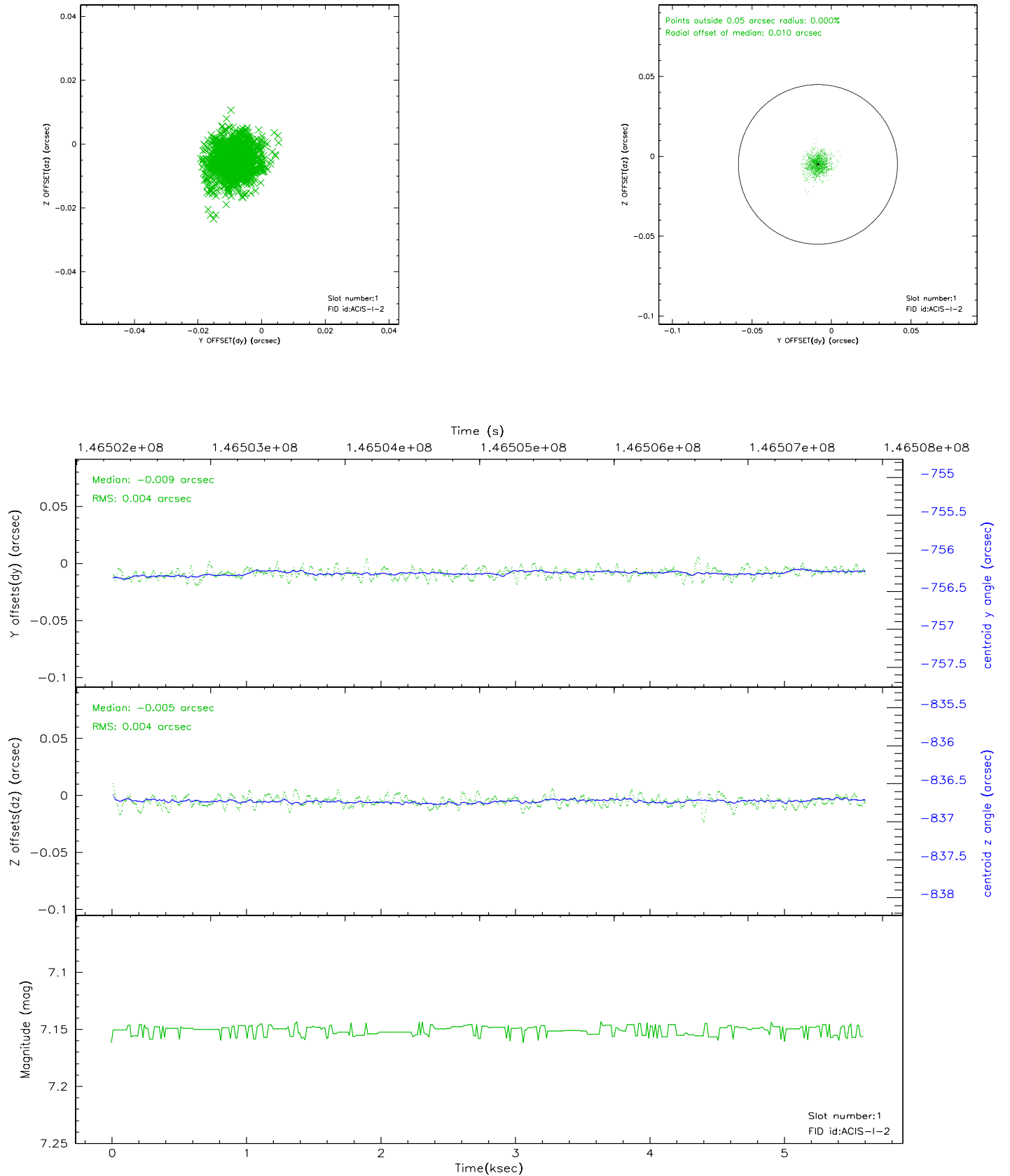


2.5 FID Slots

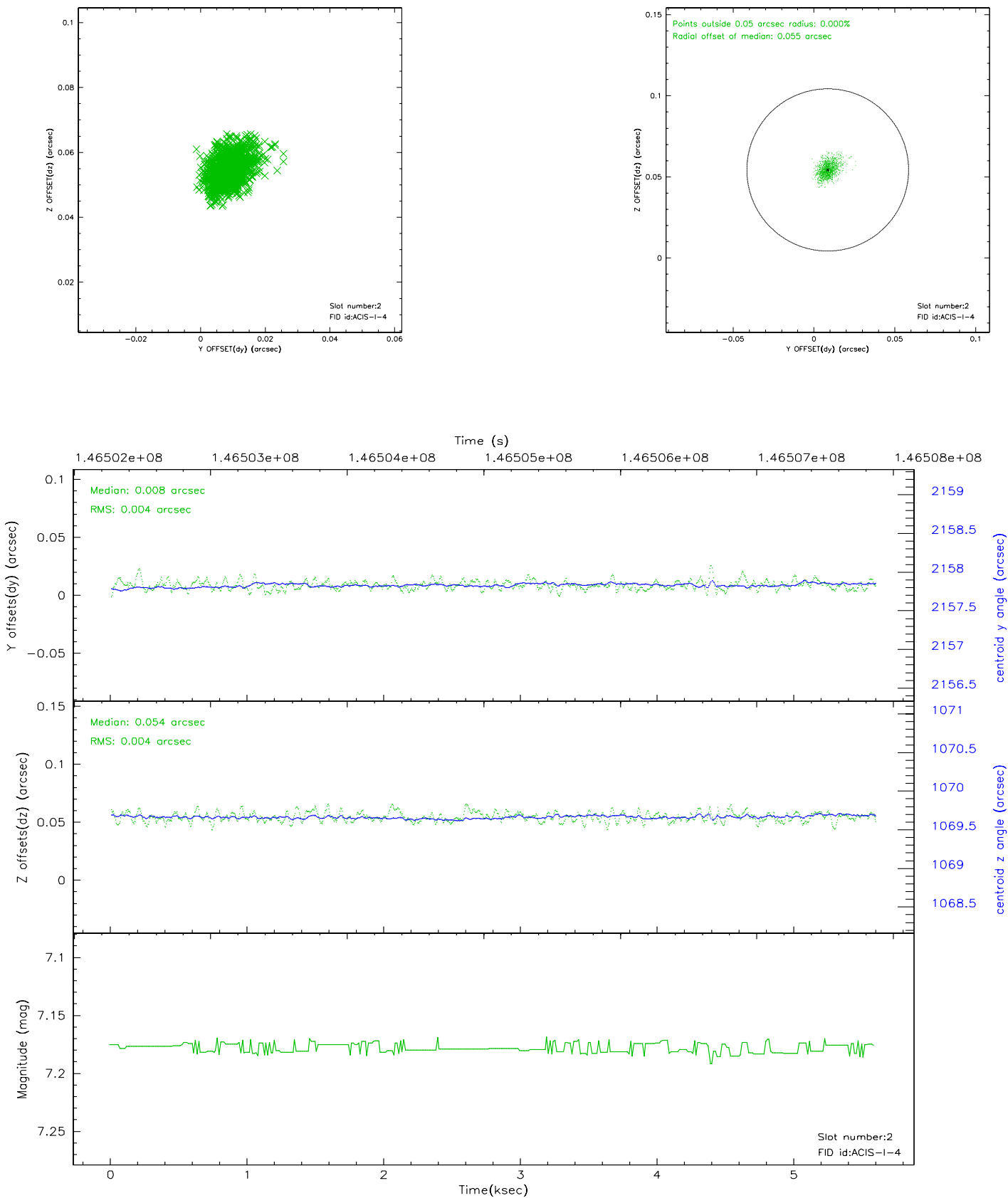
2.5.1 Slot 0



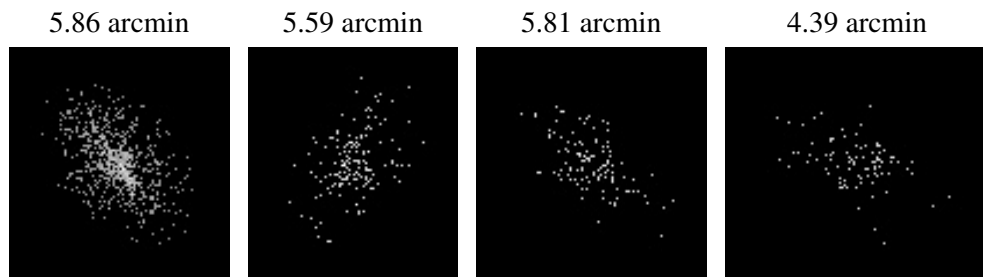
2.5.2 Slot 1



2.5.3 Slot 2



3 Point Sources



A Summary

A.1 Status

V&V Scientist	Beth Sundheim
V&V Date (YYYY-MM-DD)	2006.09.28
V&V Edition	1
V&V Disposition and Status	OK
V&V Charge Time	4.966

A.2 Comments

Window constraint satisfied.

Focal plane temperature is warmer than -118 degrees at start of observation. The ACIS calibrations are not verified or necessarily applicable for focal plane temperatures warmer than -118 degrees.