

V&V Reference Report

L2 ASCDS Version : 7.6.10

Observation 2895 - L2 Version 001
Chandra X-Ray Center

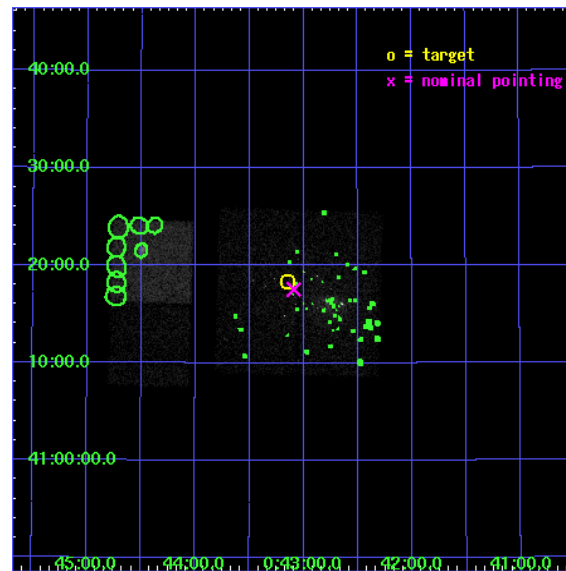
L2 Processing Date : Jan 21 2007

Contents

1	Front	2
2	OBI	3
2.1	OBI	3
2.1.1	Images	3
2.1.2	Bias	3
2.1.3	Parameters	4
2.1.4	Events	4
2.2	Compared Parameters	5
2.3	Aspect	6
2.4	Star Slots	9
2.4.1	Slot 3	9
2.4.2	Slot 4	10
2.4.3	Slot 5	11
2.4.4	Slot 6	12
2.4.5	Slot 7	13
2.5	FID Slots	14
2.5.1	Slot 0	14
2.5.2	Slot 1	15
2.5.3	Slot 2	16
3	Point Sources	17
A	Summary	18
A.1	Status	18
A.2	Comments	18

1 Front

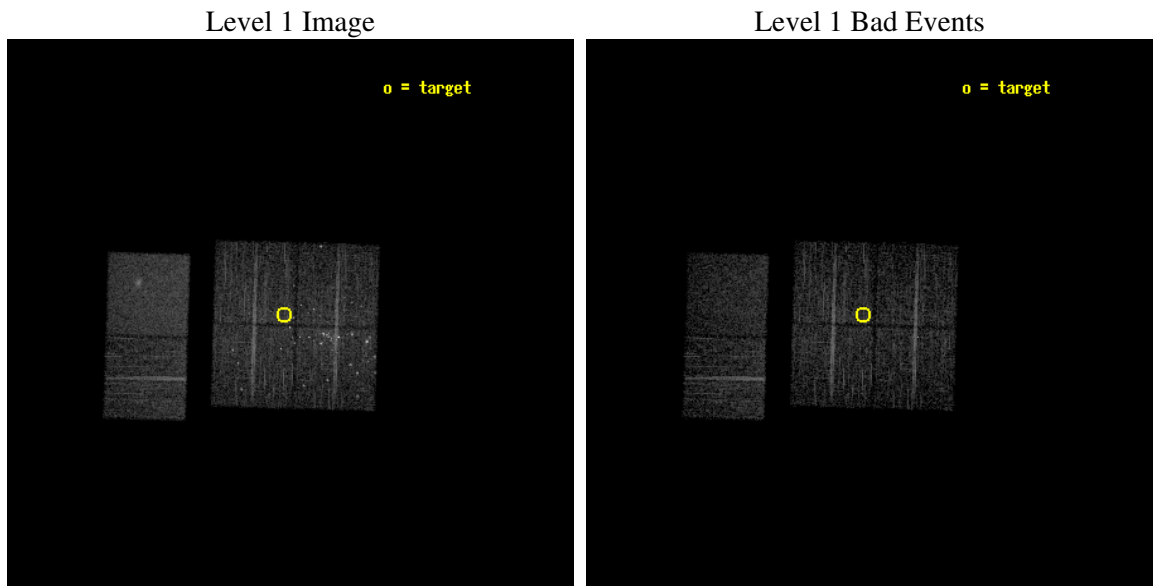
seq_num	600232
obs_id	2895
title	SEARCHING FOR X-RAY TRANSIENTS IN M31 WITH CHANDRA AND HST
observer	Dr. MICHAEL GARCIA
object	M31-T2
dtcycle	0
cycle	P
ra_targ	10.785417
dec_targ	41.305556
ra_nom	10.772351443946
dec_nom	41.292671532222
roll_nom	271.66009129093
revision	2
ontime	4944.0000046045
livetime	4881.3960996268
ontime0	4944.0000046045
ontime1	4944.0000046045
ontime2	4944.0000046045
ontime3	4944.0000046045
ontime6	4944.0000046045
ontime7	4944.0000046045
l2events	48231



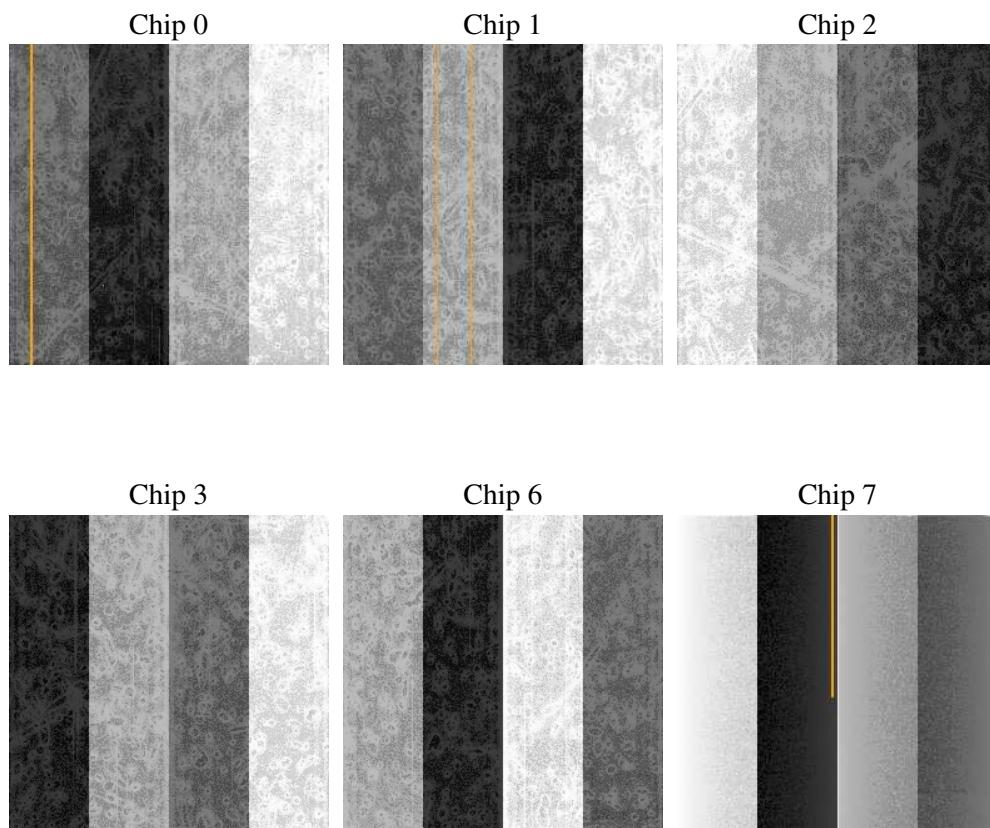
2 OBI

2.1 OBI

2.1.1 Images



2.1.2 Bias



2.1.3 Parameters

obi_num	1
ascdsver	7.6.10
caldsver	3.3.0
date	2007-01-20T14:47:22
revision	2

sched_exp_time	4800.000000
ontime	4944.0000046045
ontime0	4944.0000046045
ontime1	4944.0000046045
ontime2	4944.0000046045
ontime3	4944.0000046045
ontime6	4944.0000046045
ontime7	4944.0000046045
l1events	216124

2.1.4 Events

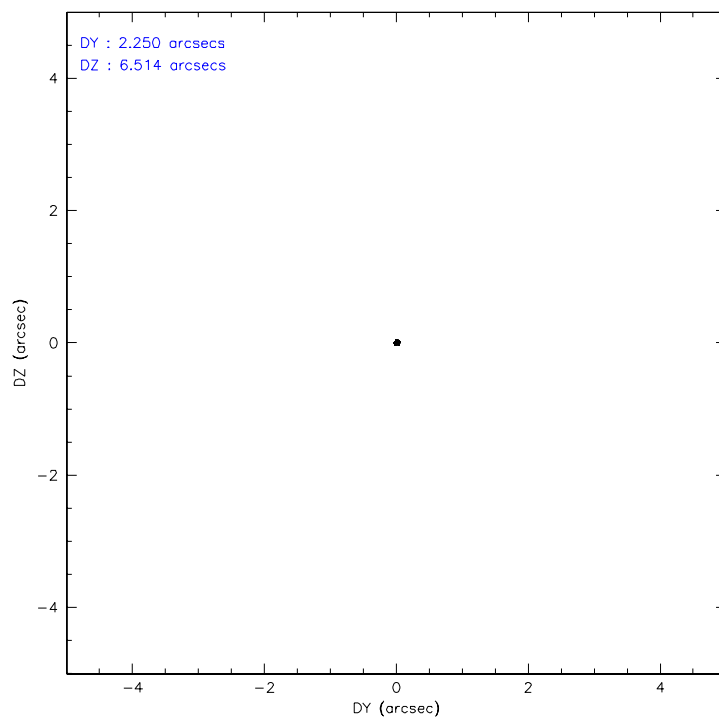
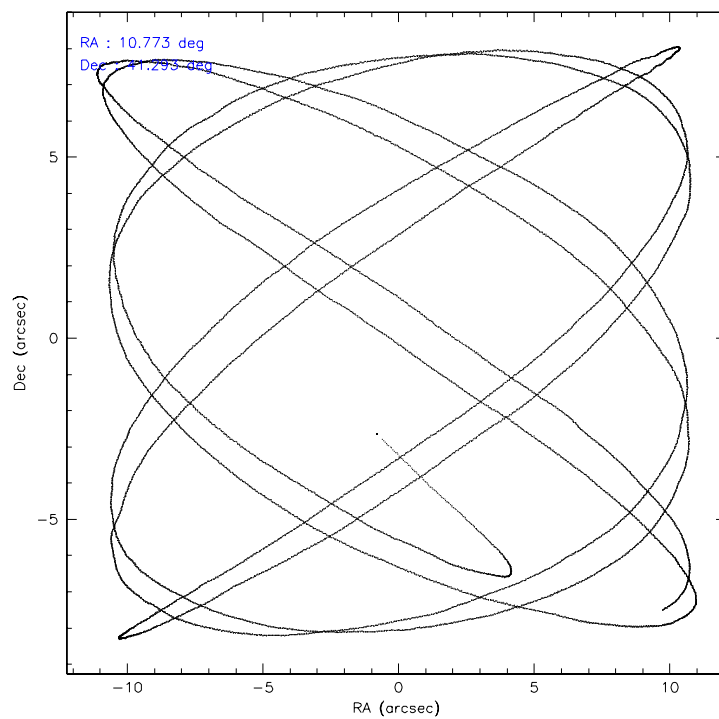
	ccd 0	ccd 1	ccd 2	ccd 3	ccd 6	ccd 7
level 1 events	40760	31656	35242	33776	32617	42073
rejected events	26056	25693	29260	29103	28907	24894
rejected %	63%	81%	83%	86%	88%	59%

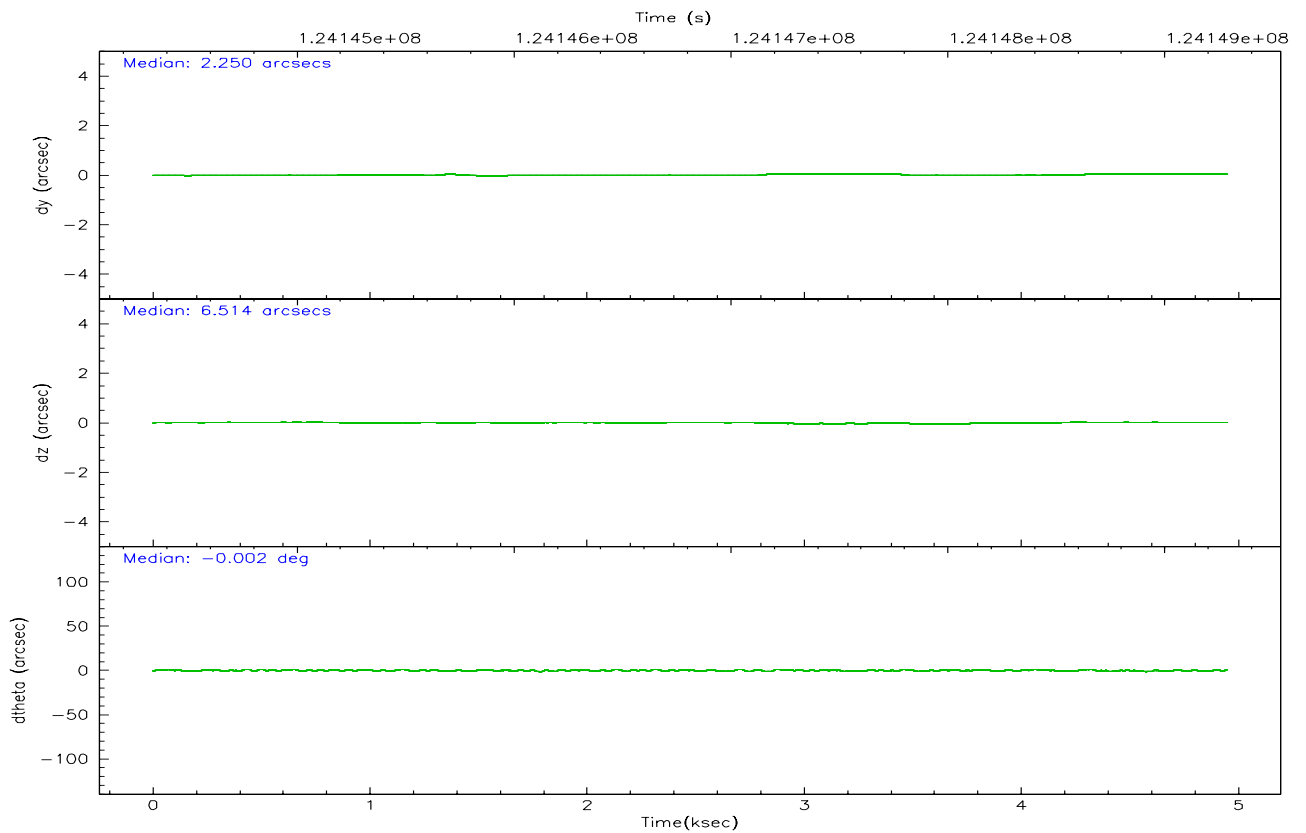
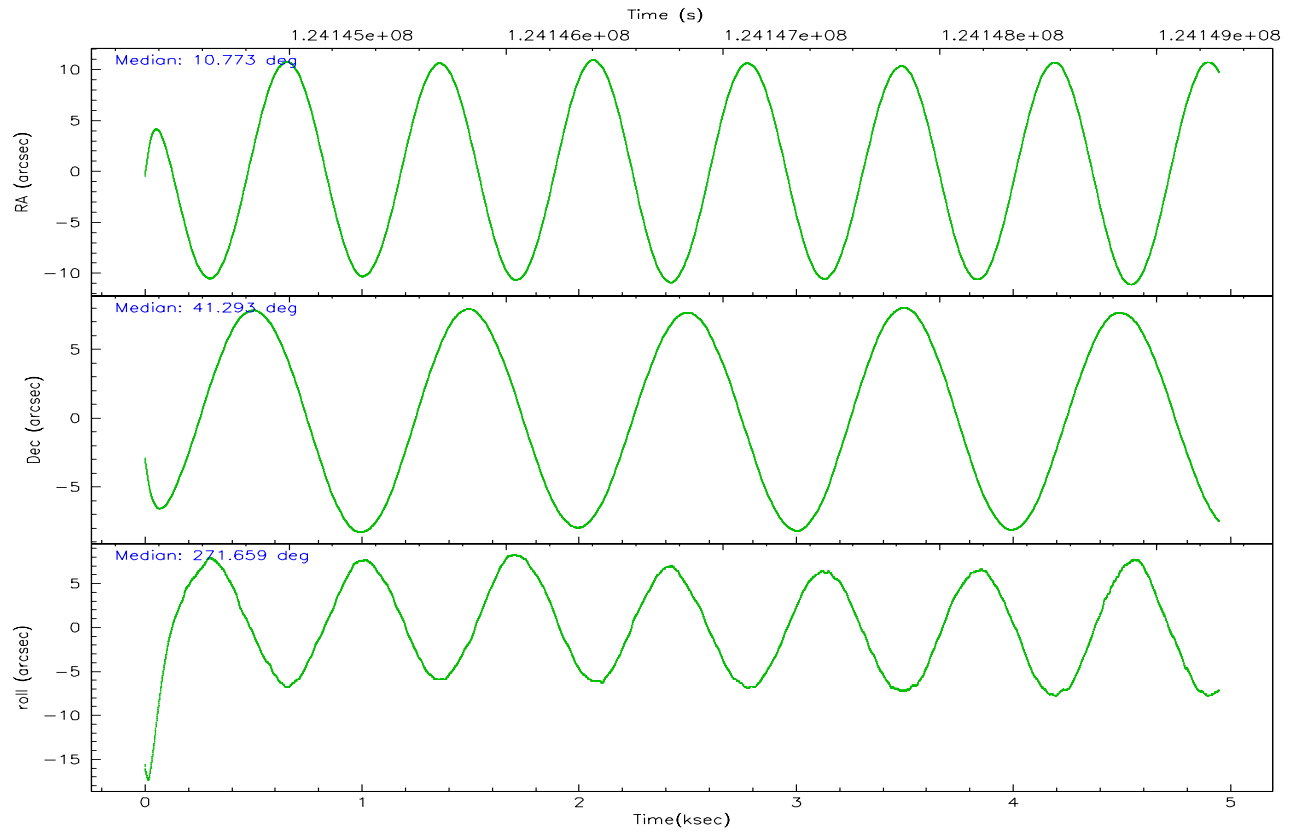
	ccd 0	ccd 1	ccd 2	ccd 3	ccd 6	ccd 7
grade 0 events	10998	3420	3551	2501	1557	1826
	26%	10%	10%	7%	4%	4%
grade 1 events	181	33	65	25	18	34
	0%	0%	0%	0%	0%	0%
grade 2 events	1938	1048	1077	855	795	3437
	4%	3%	3%	2%	2%	8%
grade 3 events	705	448	431	430	389	1668
	1%	1%	1%	1%	1%	3%
grade 4 events	679	477	422	368	348	1640
	1%	1%	1%	1%	1%	3%
grade 5 events	1220	1258	1161	1245	1450	3888
	2%	3%	3%	3%	4%	9%
grade 6 events	897	776	700	667	768	9191
	2%	2%	1%	1%	2%	21%
grade 7 events	24142	24196	27835	27685	27292	20389
	59%	76%	78%	81%	83%	48%

2.2 Compared Parameters

Parameter	Planned	Actual	Parameter	Planned	Actual
Instrument	ACIS	ACIS	Obspar format version number	6	6
Detector	ACIS-012367	ACIS-012367	Obspar file type	PREDICTED	ACTUAL
Grating	NONE	NONE	Obspar update status	NONE	UPDATED
Data mode	FAINT	FAINT	Number of optional ACIS chips dropped	0	0
Observation mode	POINTING	POINTING	On-chip summing requested	N	N
Pointing RA	10.753104	10.77235144394634	Subarray requested	NONE	NONE
Pointing Dec	41.315945	41.29267153222158	Alternating exposures requested	N	N
Pointing Roll	271.464134	271.6600912909287	Primary exposure time	0.000000	3.2
Window start time	123638464.184000	123638464.184000			
Window stop time	124243264.184000	124243264.184000			
SIM focus pos (mm)	-0.782348	-0.7809083437167272			
SIM defocus (mm)	0	0.001439871863259334			
SIM translation stage pos (mm)	-233.592463	-233.5874344608287			
SIM translation stage offset (mm)	0	-0.005018542100998502			
Observation start time	124144484.184000	124143348.36569			
Observation start date	2001-12-07T20:33:40	2001-12-07T20:15:48			
Observation end time	124149284.184000	124149871.97846			
Observation end date	2001-12-07T21:53:40	2001-12-07T22:04:31			
Read mode	TIMED	TIMED			

2.3 Aspect



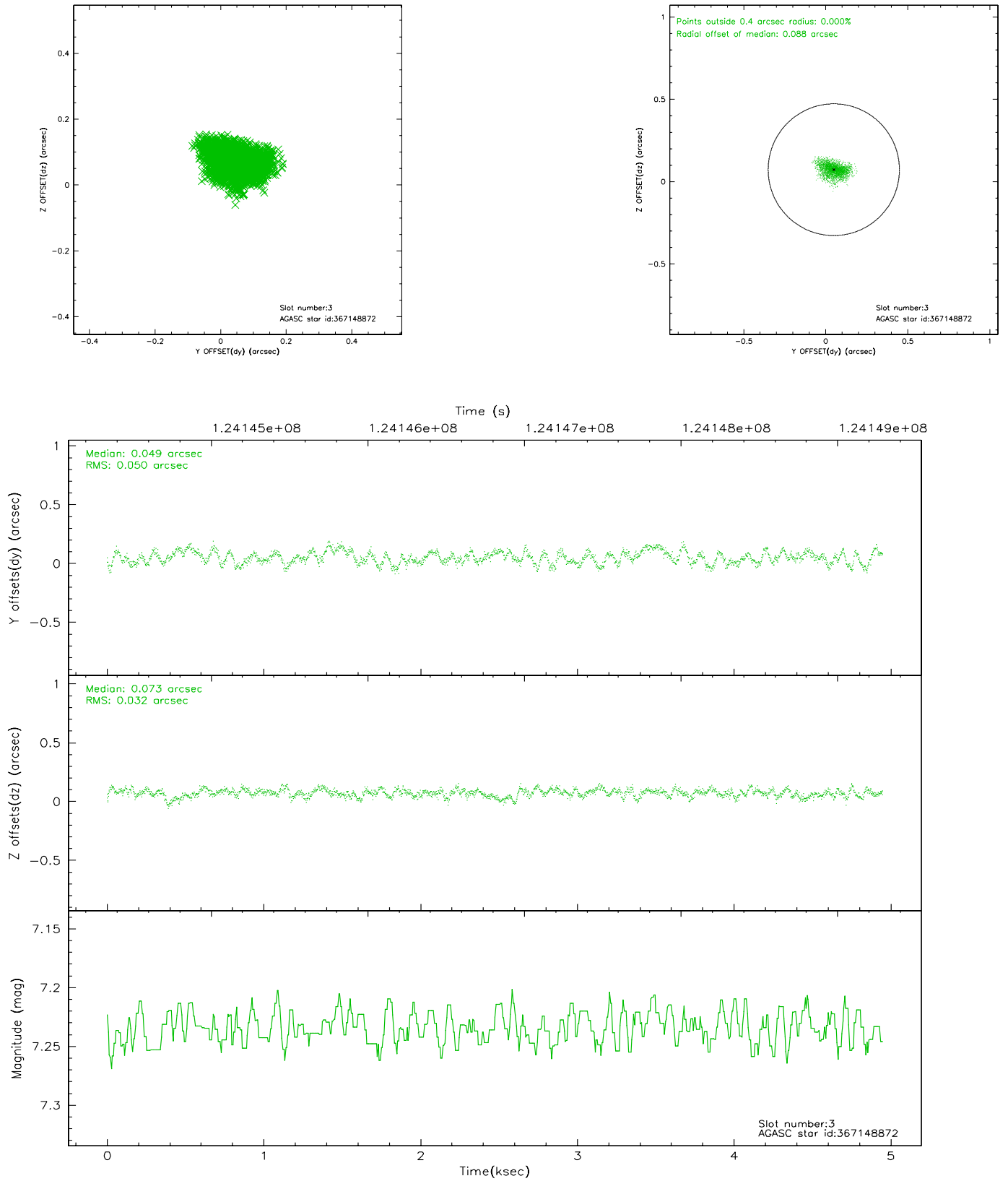


Slot Statistics

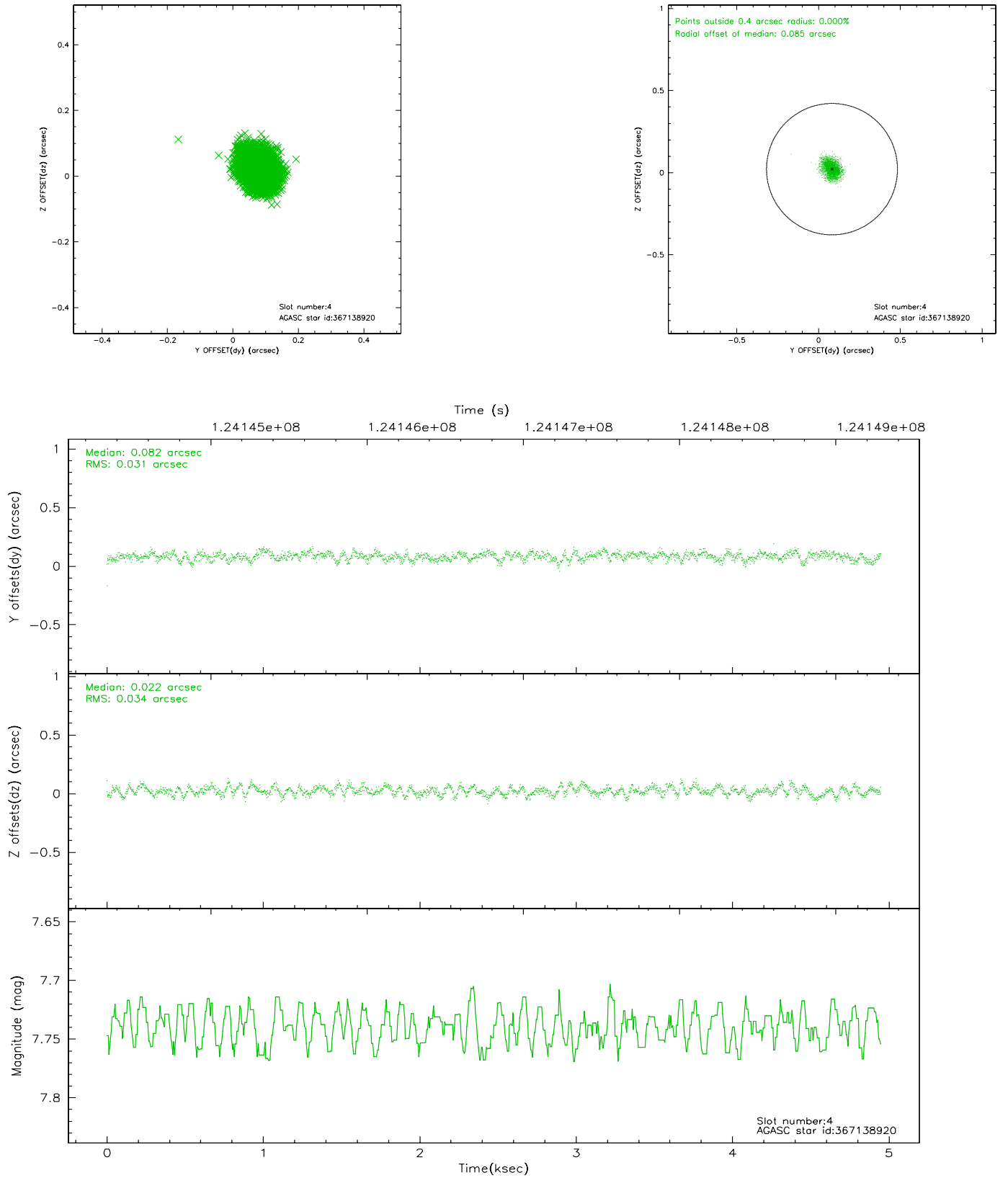
slot	status	id	mag	n_pts	med_dy	med_dz	dr1	dr2	ra	dec	mean_y	mean_z
0	FID	ACIS-I-1	7.25	1206	-0.070	-0.069	0.006	0.010	0.000000	0.000000	937.48	-829.97
1	FID	ACIS-I-3	7.45	1206	-0.005	0.175	0.007	0.011	0.000000	0.000000	55.74	-963.64
2	FID	ACIS-I-5	7.23	1207	-0.015	-0.034	0.005	0.010	0.000000	0.000000	-1810.60	1066.85
3	GUIDE	367148872	7.23	2415	0.049	0.073	0.064	0.103	10.505940	40.688258	2241.30	-733.01
4	GUIDE	367138920	7.74	2415	0.082	0.022	0.049	0.079	11.513485	40.808909	1870.14	2023.93
5	GUIDE	367139768	8.00	2414	-0.049	-0.050	0.045	0.074	11.069715	40.685175	2291.67	806.08
6	GUIDE	367671800	9.40	2414	-0.059	0.010	0.079	0.129	10.554735	41.964935	-2348.52	-471.71
7	GUIDE	367665472	9.48	2414	-0.023	-0.056	0.081	0.130	10.241611	41.730843	-1532.93	-1336.64

2.4 Star Slots

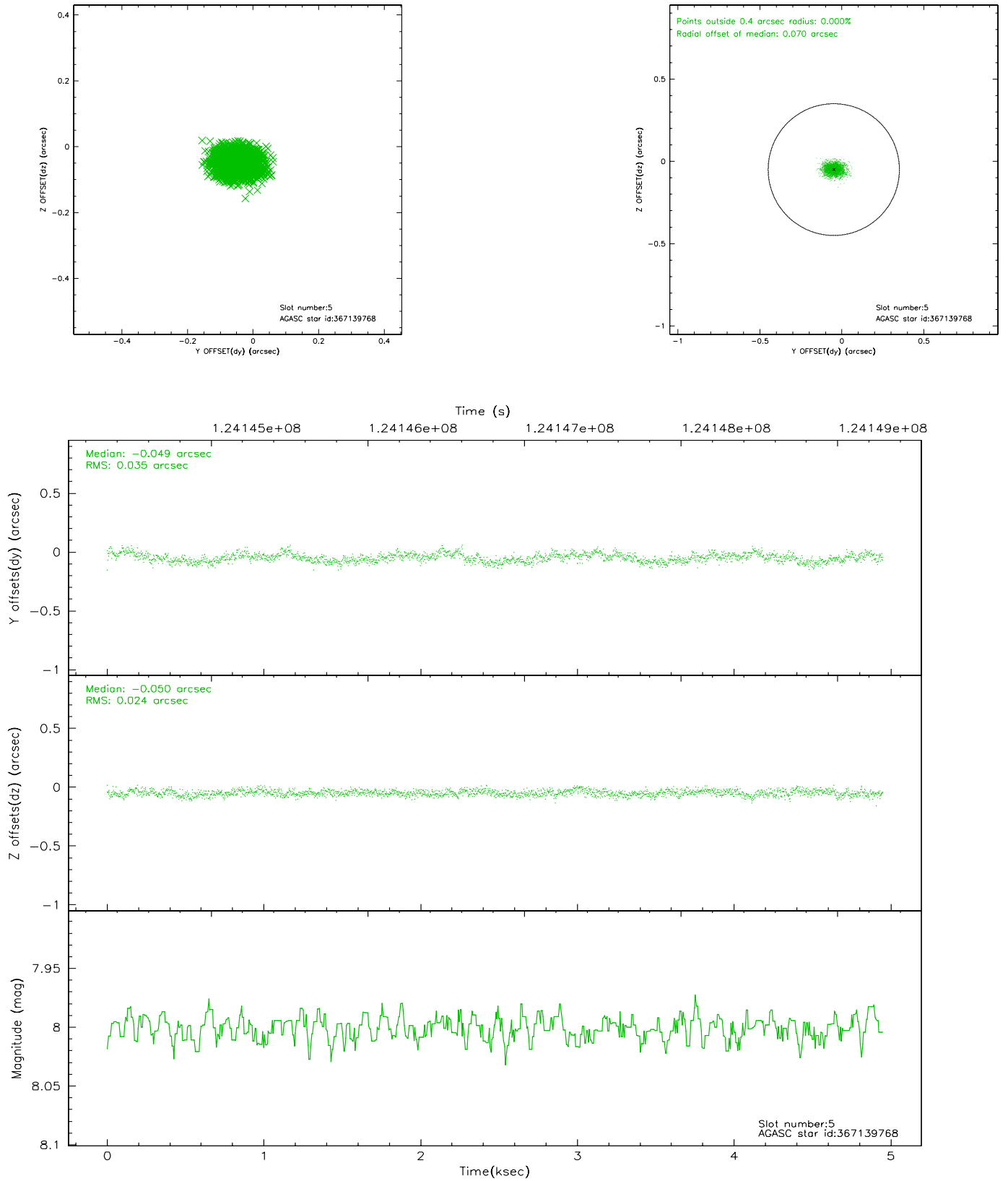
2.4.1 Slot 3



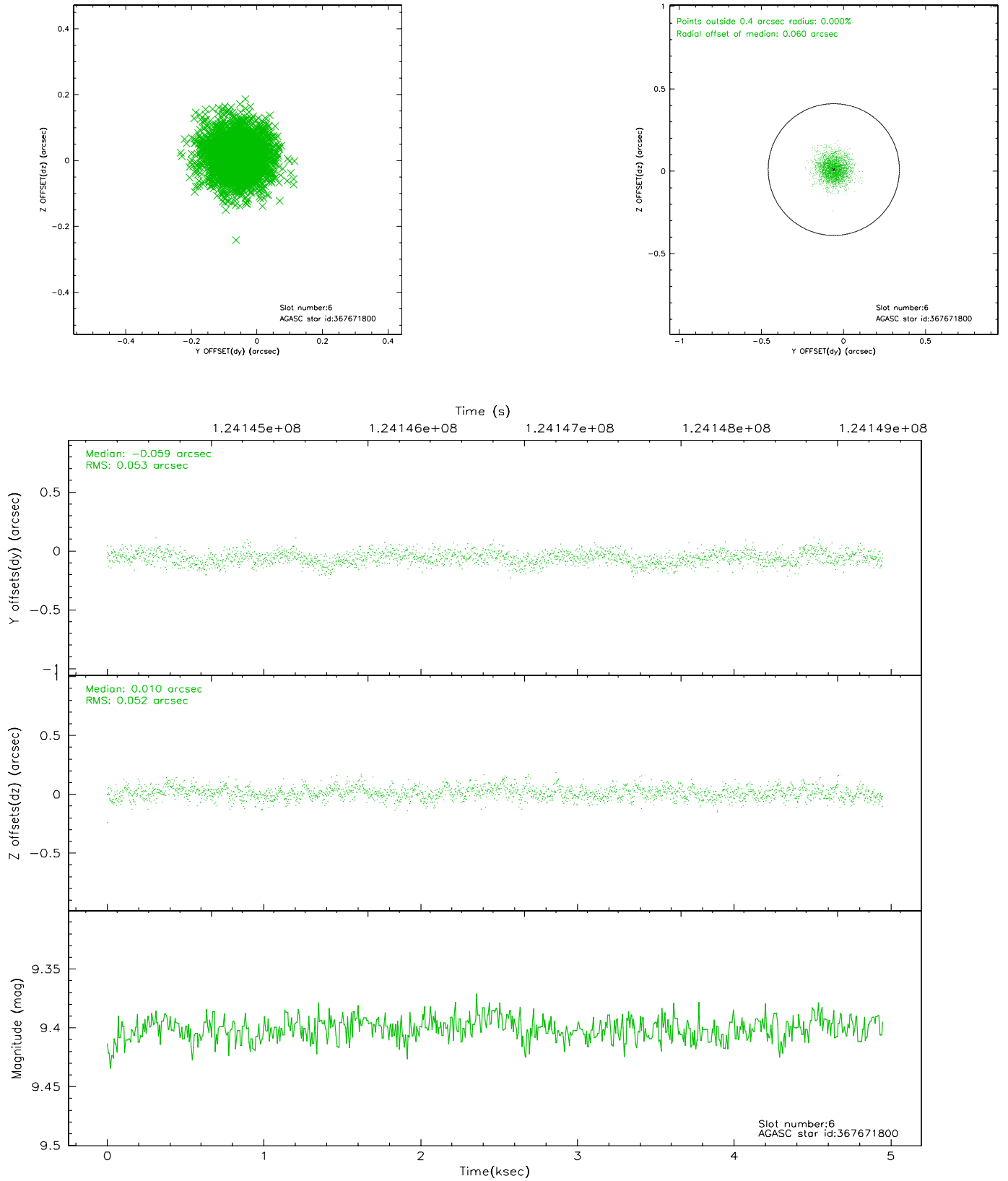
2.4.2 Slot 4



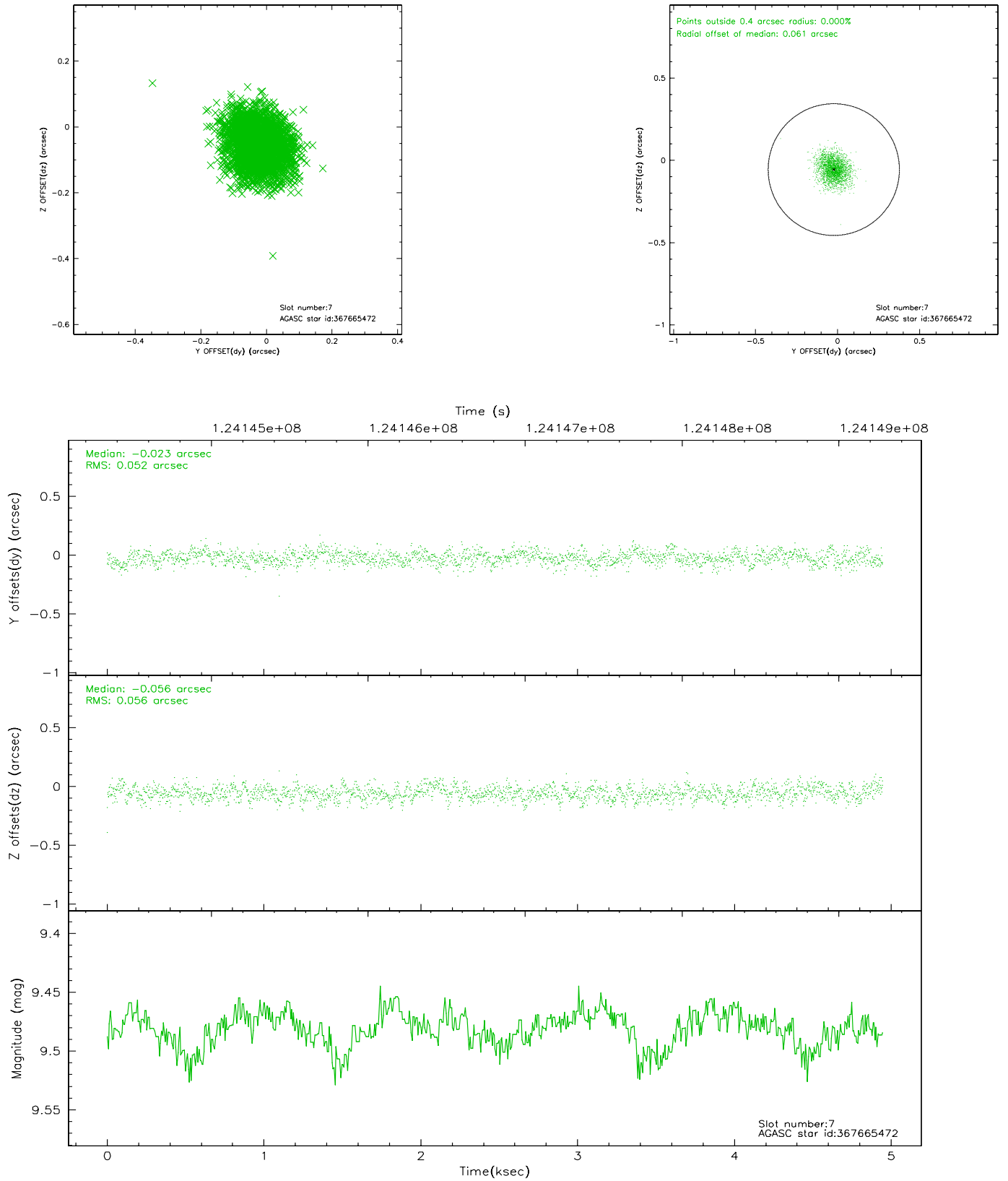
2.4.3 Slot 5



2.4.4 Slot 6

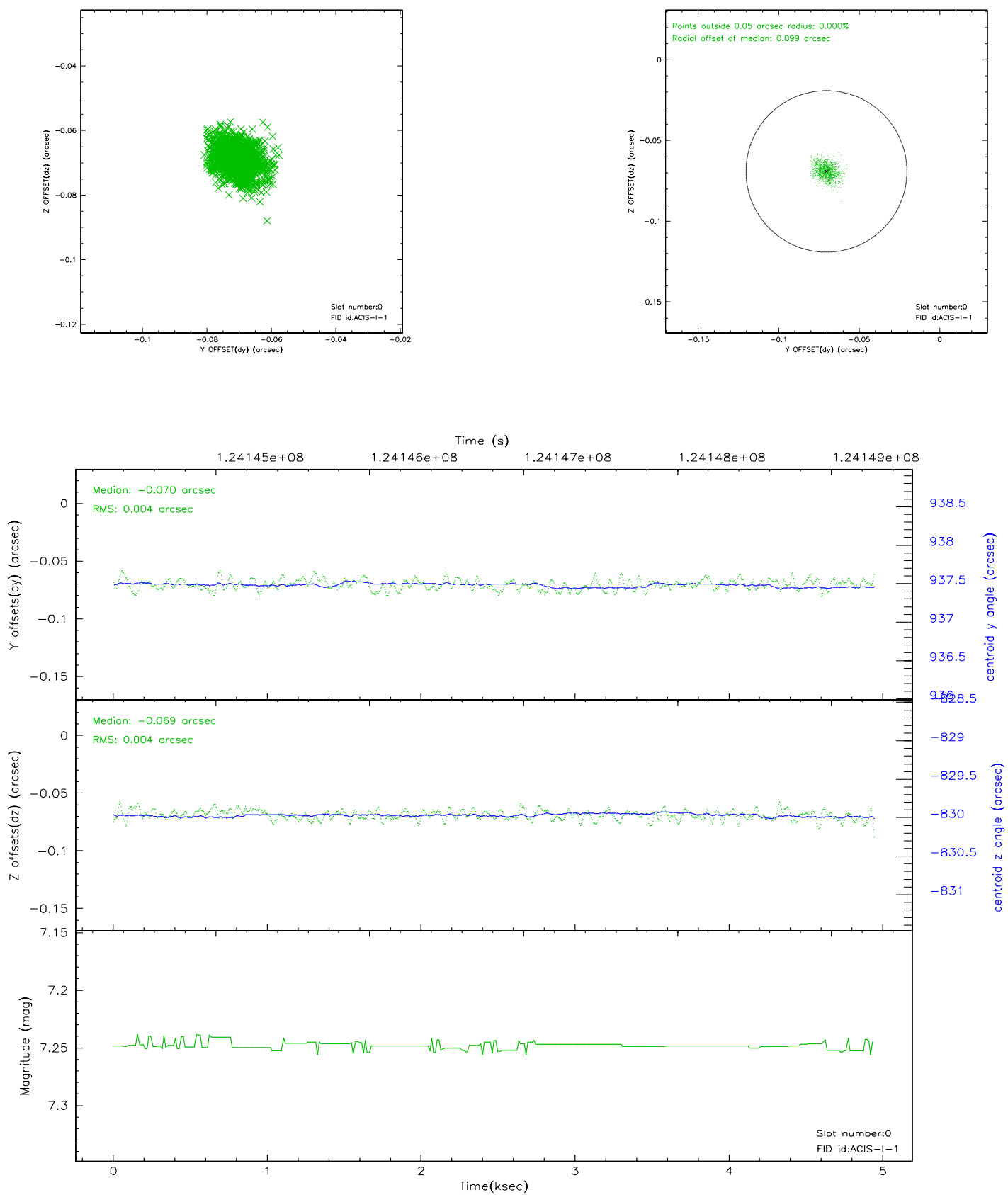


2.4.5 Slot 7

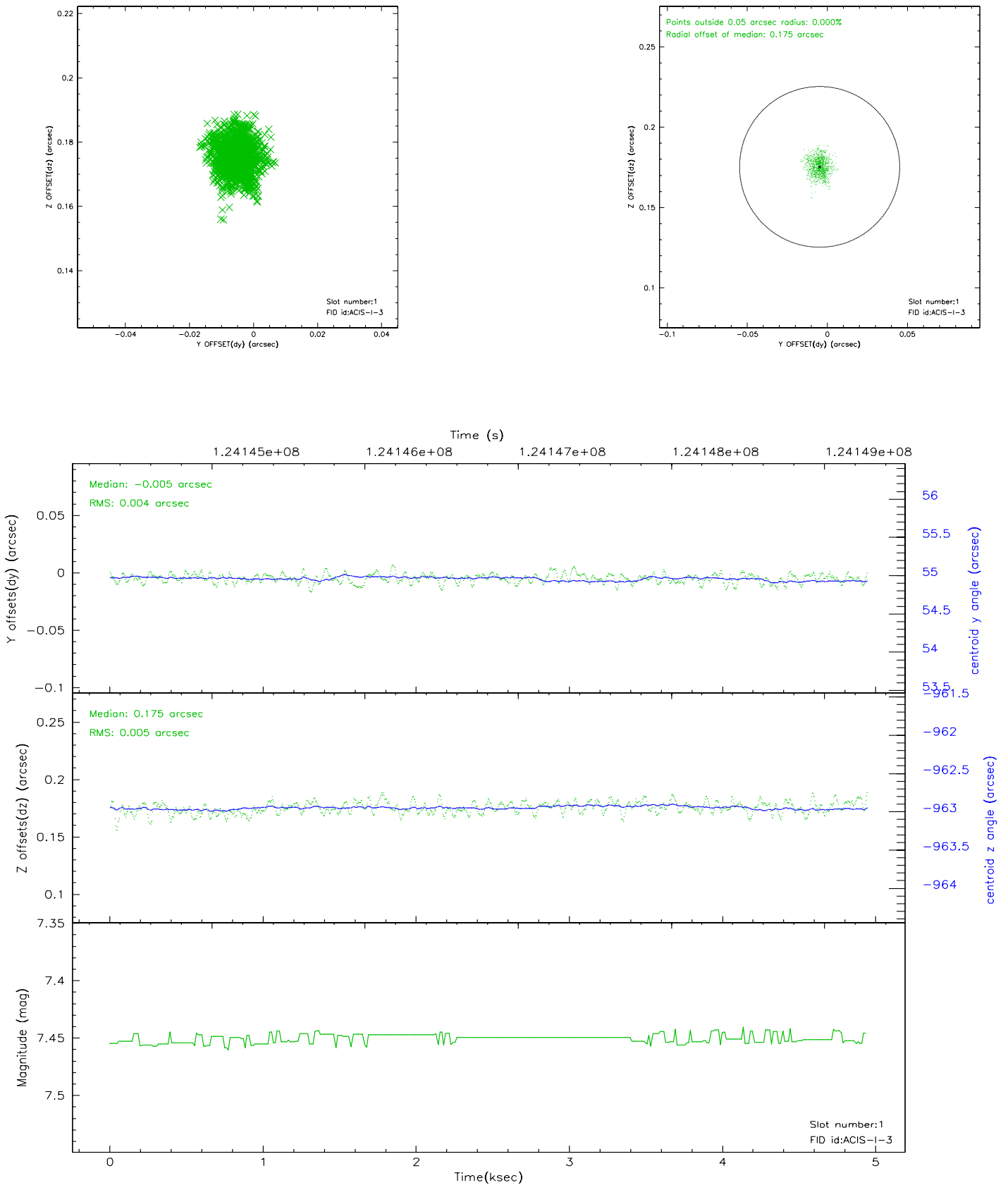


2.5 FID Slots

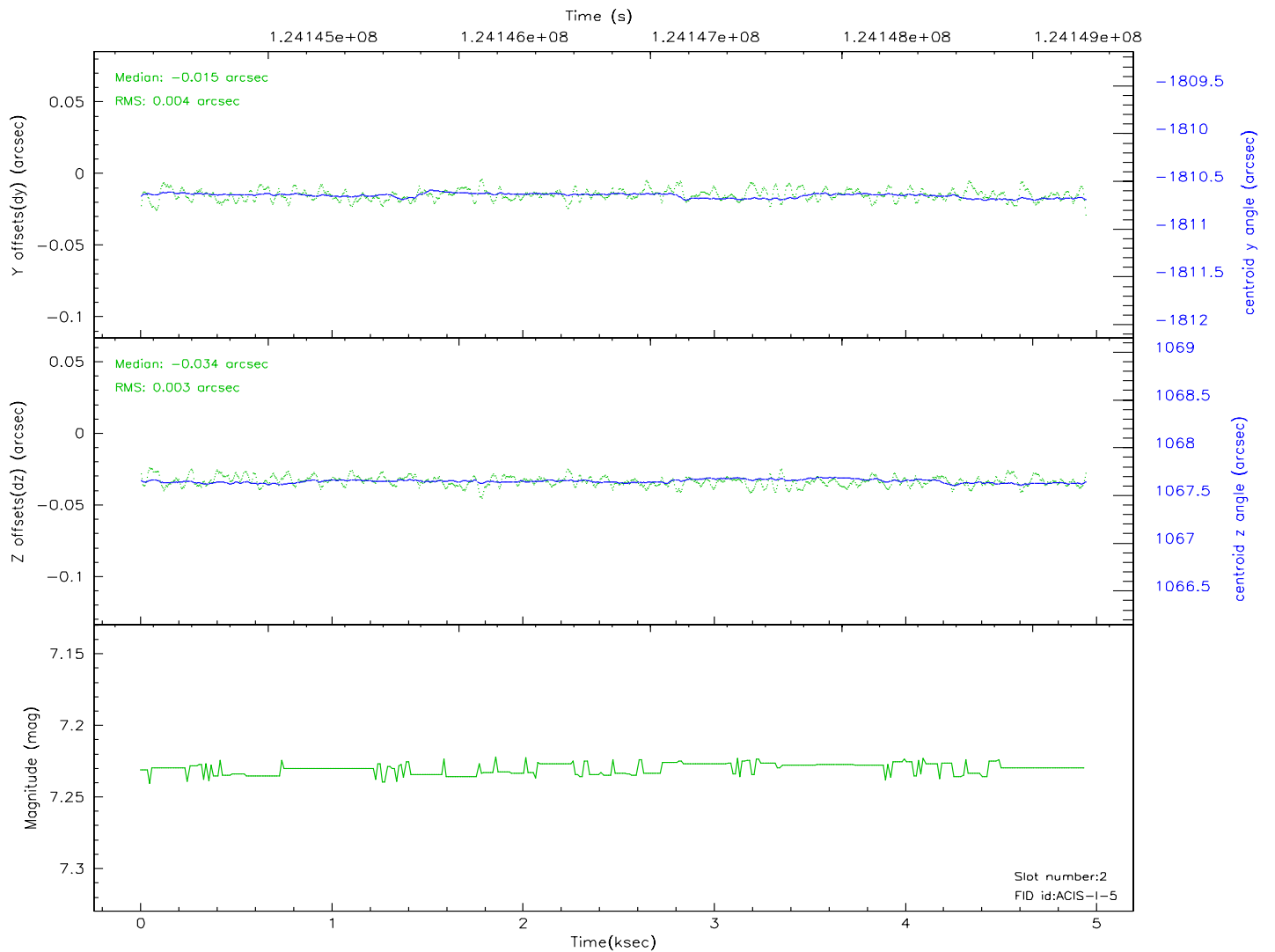
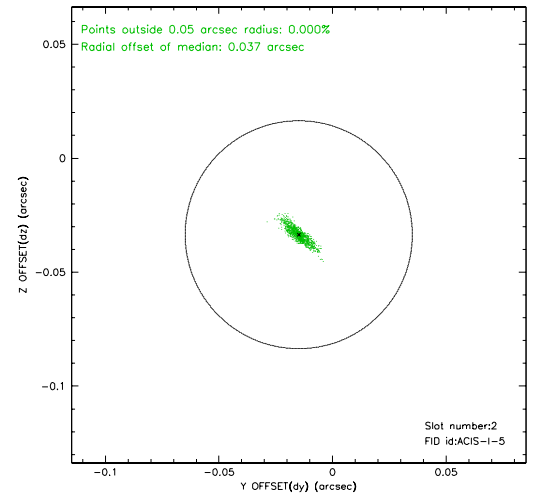
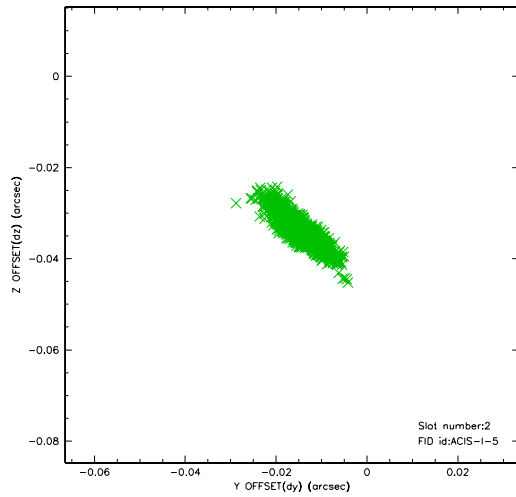
2.5.1 Slot 0



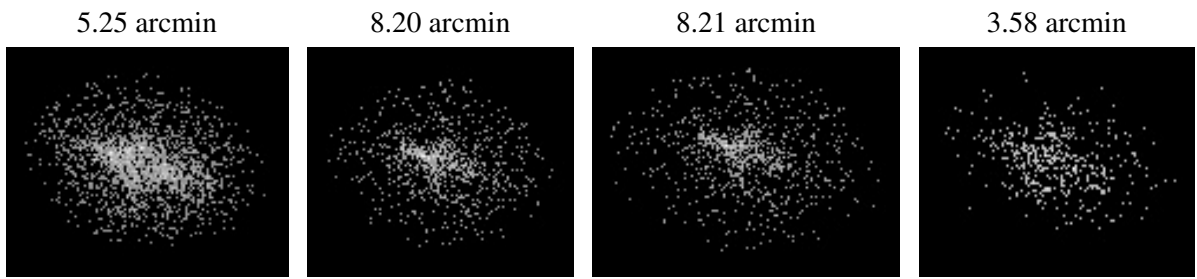
2.5.2 Slot 1



2.5.3 Slot 2



3 Point Sources



A Summary

A.1 Status

V&V Scientist	Beth Sundheim
V&V Date (YYYY-MM-DD)	2007.01.22
V&V Edition	1
V&V Disposition and Status	OK
V&V Charge Time	4.944

A.2 Comments