

V&V Reference Report

L2 ASCDS Version : 7.6.9

Observation 2879 - L2 Version 001
Chandra X-Ray Center

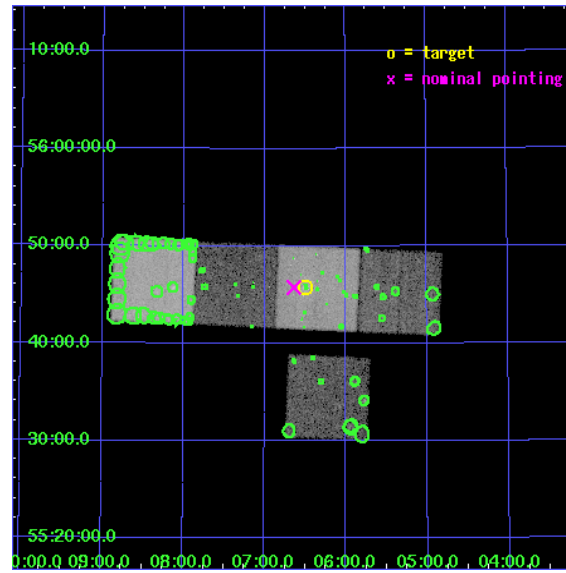
L2 Processing Date : Oct 9 2006

Contents

1	Front	2
2	OBI	3
2.1	OBI	3
2.1.1	Images	3
2.1.2	Bias	3
2.1.3	Parameters	4
2.1.4	Events	4
2.2	Compared Parameters	5
2.3	Aspect	6
2.4	Star Slots	9
2.4.1	Slot 3	9
2.4.2	Slot 4	10
2.4.3	Slot 5	11
2.4.4	Slot 6	12
2.4.5	Slot 7	13
2.5	FID Slots	14
2.5.1	Slot 0	14
2.5.2	Slot 1	15
2.5.3	Slot 2	16
3	Point Sources	17
A	Summary	18
A.1	Status	18
A.2	Comments	18

1 Front

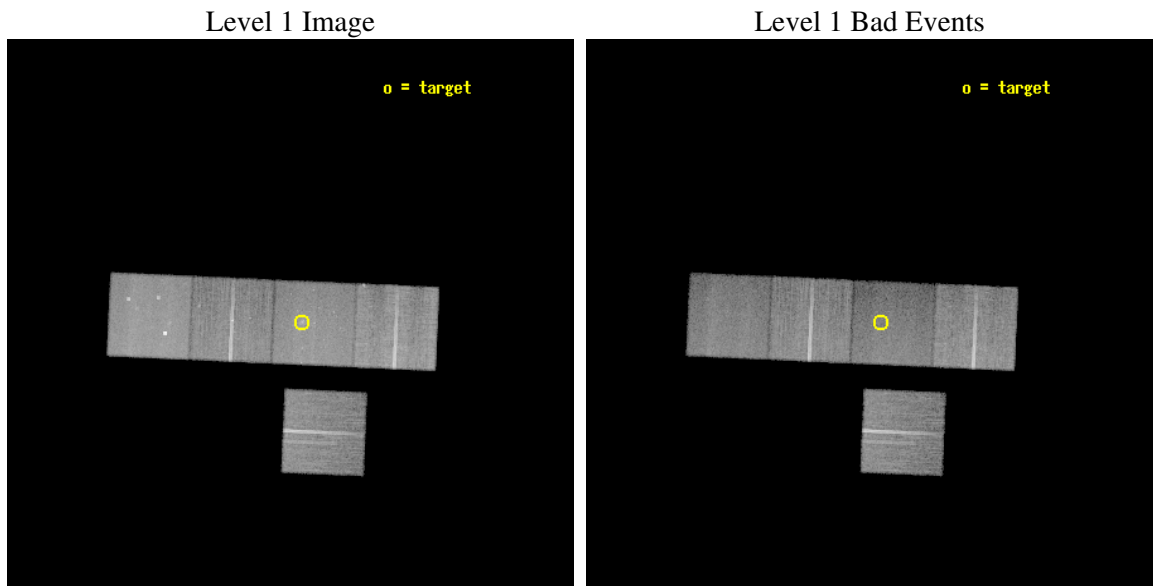
seq_num	600216
obs_id	2879
title	RESOLVING THE X-RAY BINARY POPULATION IN EARLY-TYPE GALAXIES
observer	Dr. Craig Sarazin
object	NGC5866 (M102)
dtcycle	0
cycle	P
ra_targ	226.6225
dec_targ	55.763694
ra_nom	226.65938067383
dec_nom	55.762873602508
roll_nom	2.5436164171563
revision	2
ontime	34180.59993428
livetime	33734.005232747
ontime3	34177.458944112
ontime5	34180.59993428
ontime6	34174.317983925
ontime7	34180.59993428
ontime8	34177.45896408
l2events	237512



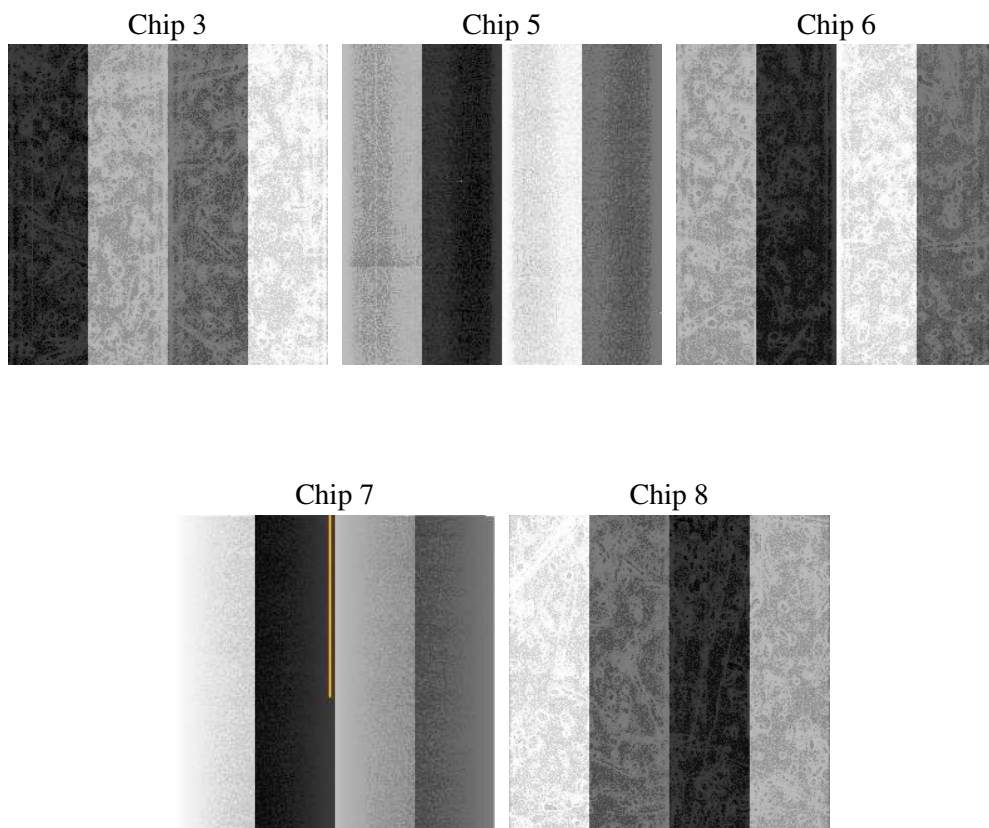
2 OBI

2.1 OBI

2.1.1 Images



2.1.2 Bias



2.1.3 Parameters

obi_num	1
ascdsver	7.6.9
caldbver	3.2.3
date	2006-10-09T14:35:13
revision	2

sched_exp_time	34000.000000
ontime	34409.67056185
ontime3	34406.529571682
ontime5	34409.67056185
ontime6	34403.388611495
ontime7	34409.67056185
ontime8	34406.52959165
l1events	1005499

2.1.4 Events

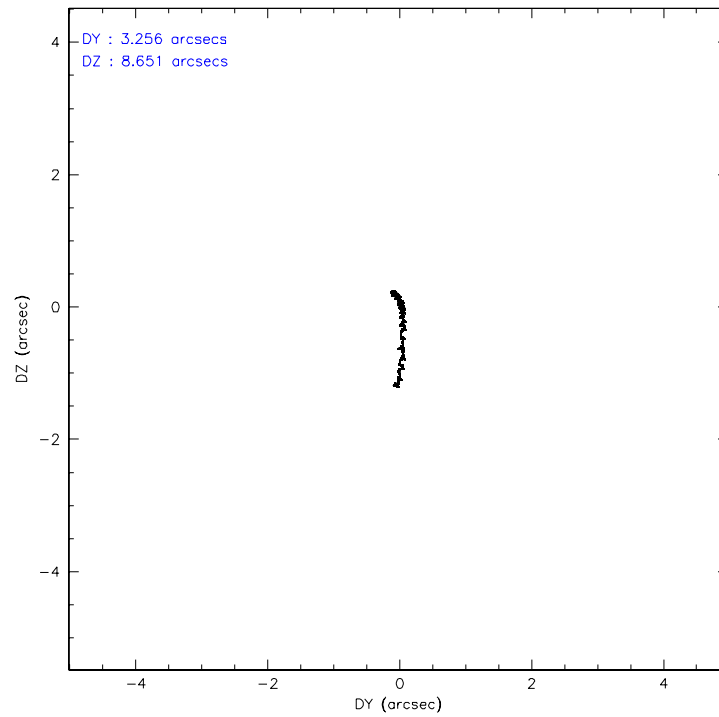
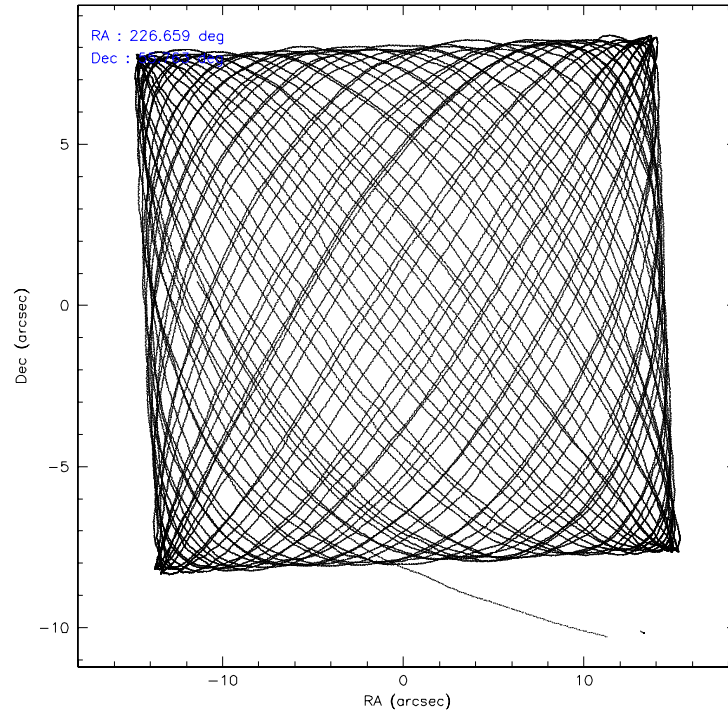
	ccd 3	ccd 5	ccd 6	ccd 7	ccd 8
level 1 events	173823	233620	179093	194751	224212
rejected events	157450	120746	160118	110261	176015
rejected %	90%	51%	89%	56%	78%

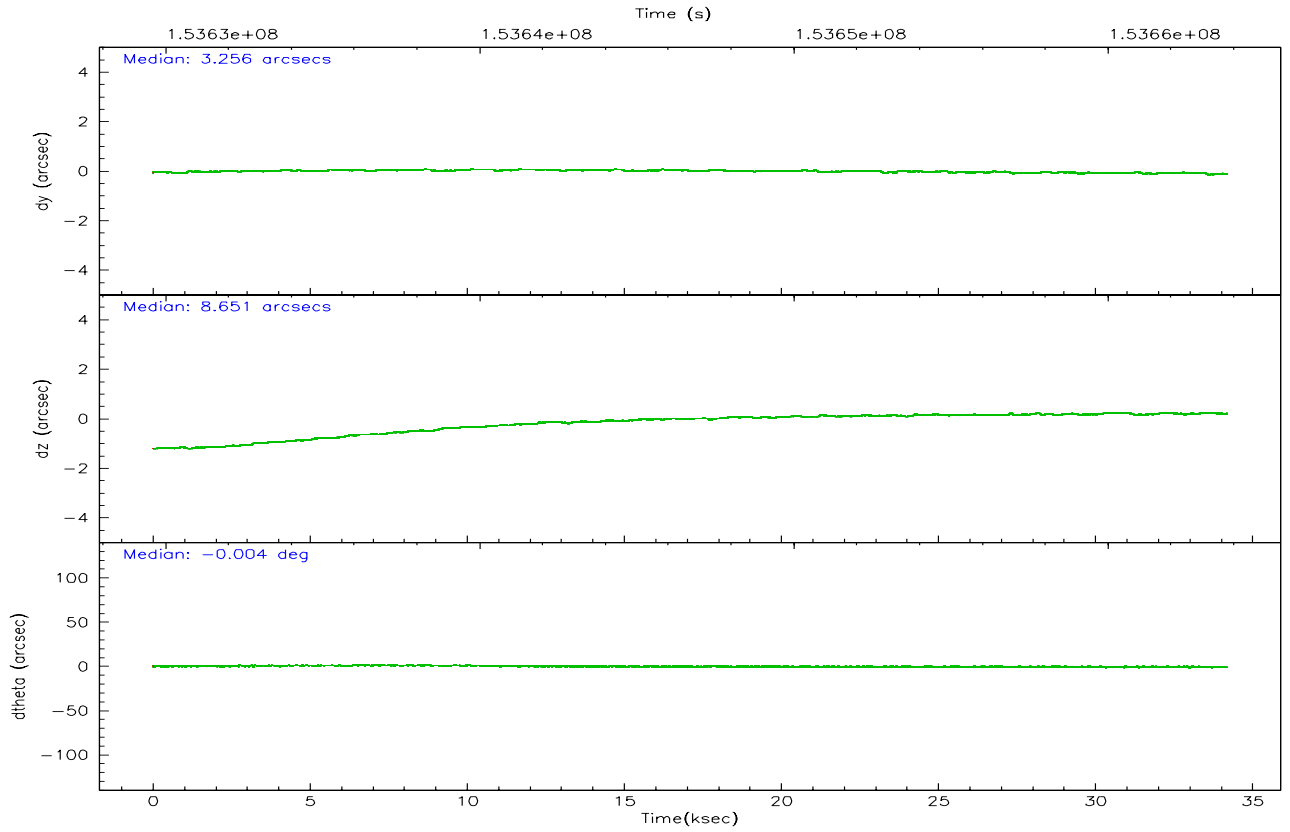
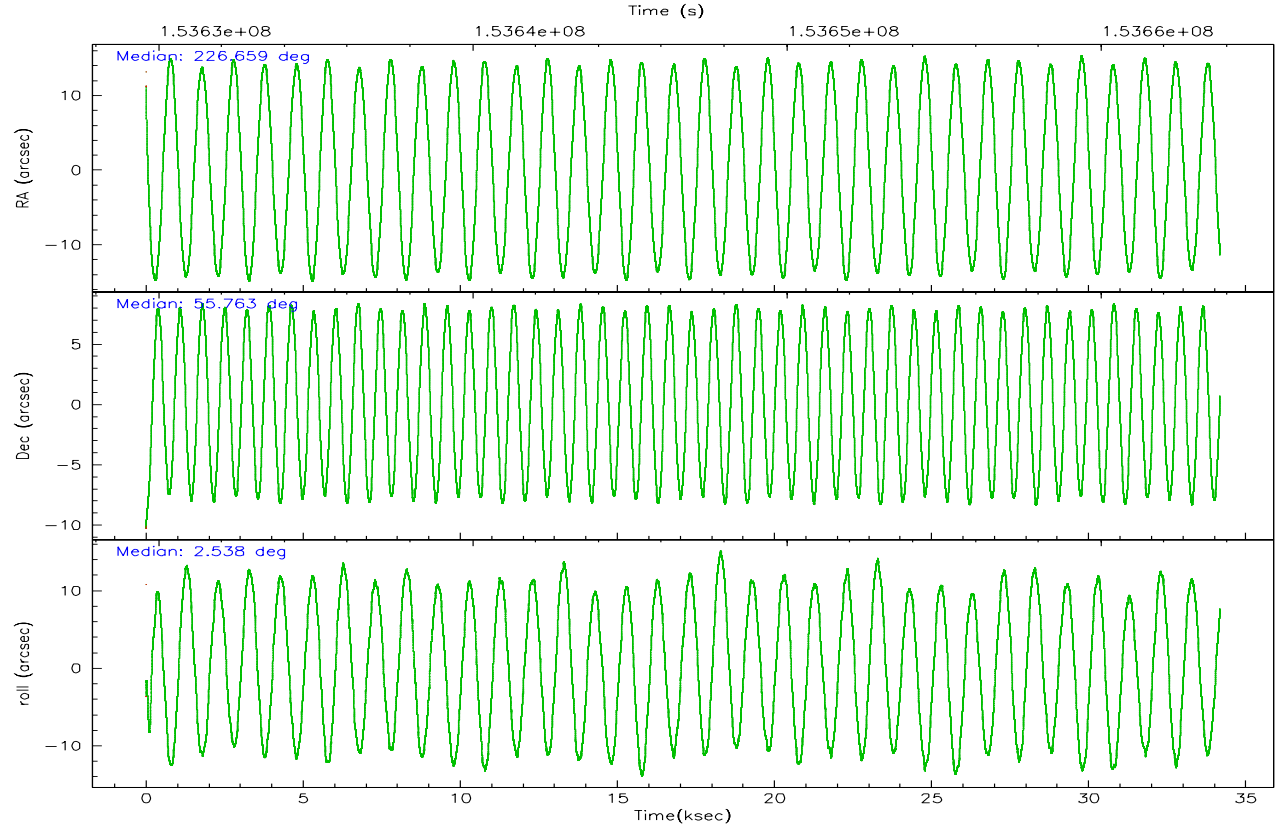
	ccd 3	ccd 5	ccd 6	ccd 7	ccd 8
grade 0 events	5951	11665	7320	6810	15251
	3%	4%	4%	3%	6%
grade 1 events	82	186	88	96	152
	0%	0%	0%	0%	0%
grade 2 events	3484	33743	3930	20495	10589
	2%	14%	2%	10%	4%
grade 3 events	2019	3238	2096	5418	5180
	1%	1%	1%	2%	2%
grade 4 events	1847	2987	1993	5164	4830
	1%	1%	1%	2%	2%
grade 5 events	6604	12561	6879	14707	9570
	3%	5%	3%	7%	4%
grade 6 events	3173	62010	3761	47180	12683
	1%	26%	2%	24%	5%
grade 7 events	150663	107230	153026	94881	165957
	86%	45%	85%	48%	74%

2.2 Compared Parameters

Parameter	Planned	Actual	Parameter	Planned	Actual
Instrument	ACIS	ACIS	Obspar format version number	6	6
Detector	ACIS-35678	ACIS-35678	Obspar file type	PREDICTED	ACTUAL
Grating	NONE	NONE	Obspar update status	NONE	UPDATED
Data mode	VFAINT	VFAINT	Number of optional ACIS chips dropped	0	0
Observation mode	POINTING	POINTING	On-chip summing requested	N	N
Pointing RA	226.618948	226.659380673826	Subarray requested	NONE	NONE
Pointing Dec	55.747930	55.76287360250821	Alternating exposures requested	N	N
Pointing Roll	2.420408	2.543616417156253	Primary exposure time	0.000000	3.1
SIM focus pos (mm)	-0.684267	-0.6828225247311905			
SIM defocus (mm)	0	0.001444936568705701			
SIM translation stage pos (mm)	-190.132523	-190.1425803651734			
SIM translation stage offset (mm)	0	0.01005778216563158			
Observation start time	153629786.184000	153628658.95723			
Observation start date	2002-11-14T02:55:22	2002-11-14T02:37:38			
Observation end time	153663786.184000	153664803.53373			
Observation end date	2002-11-14T12:22:02	2002-11-14T12:40:03			
Read mode	TIMED	TIMED			

2.3 Aspect



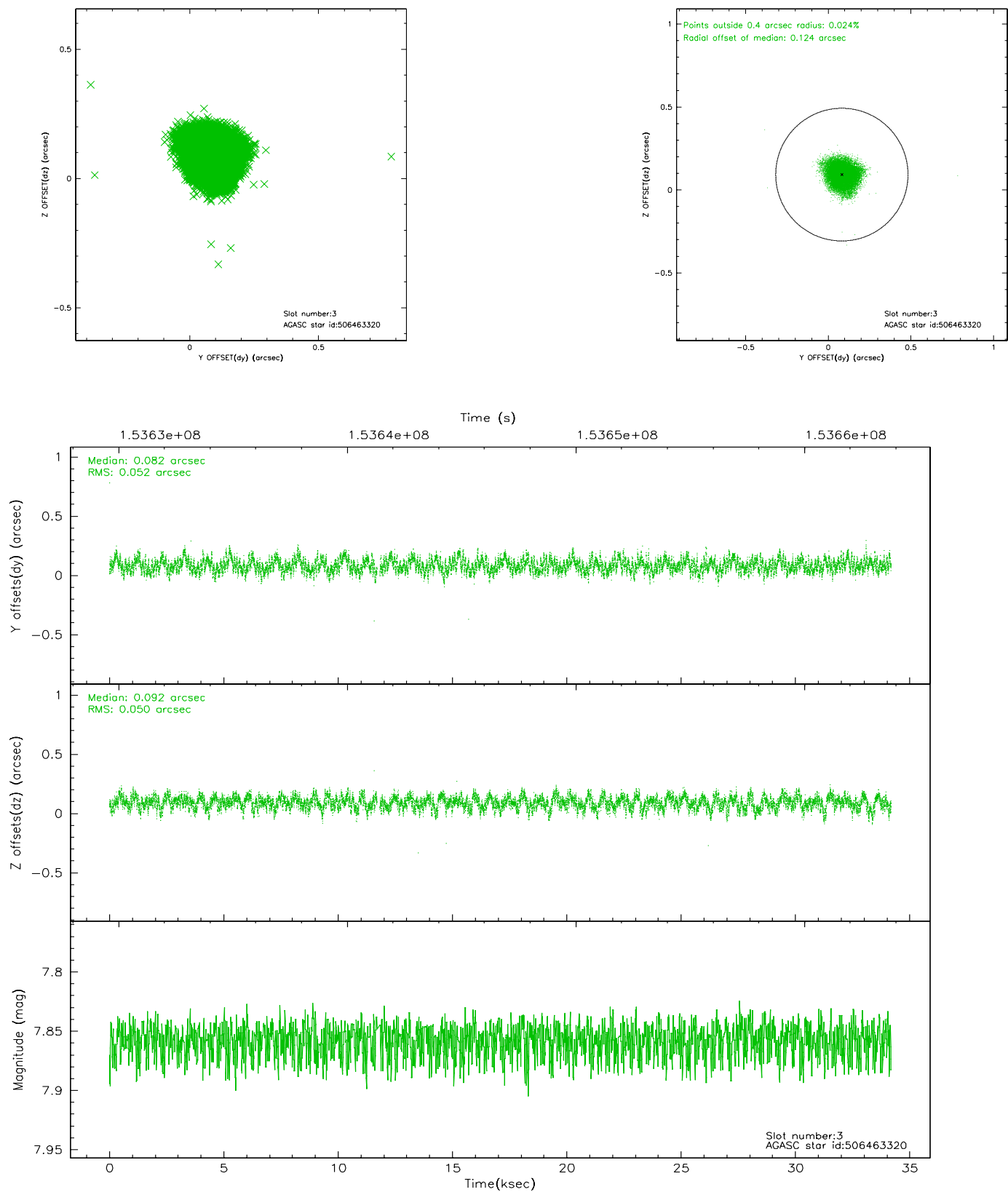


Slot Statistics

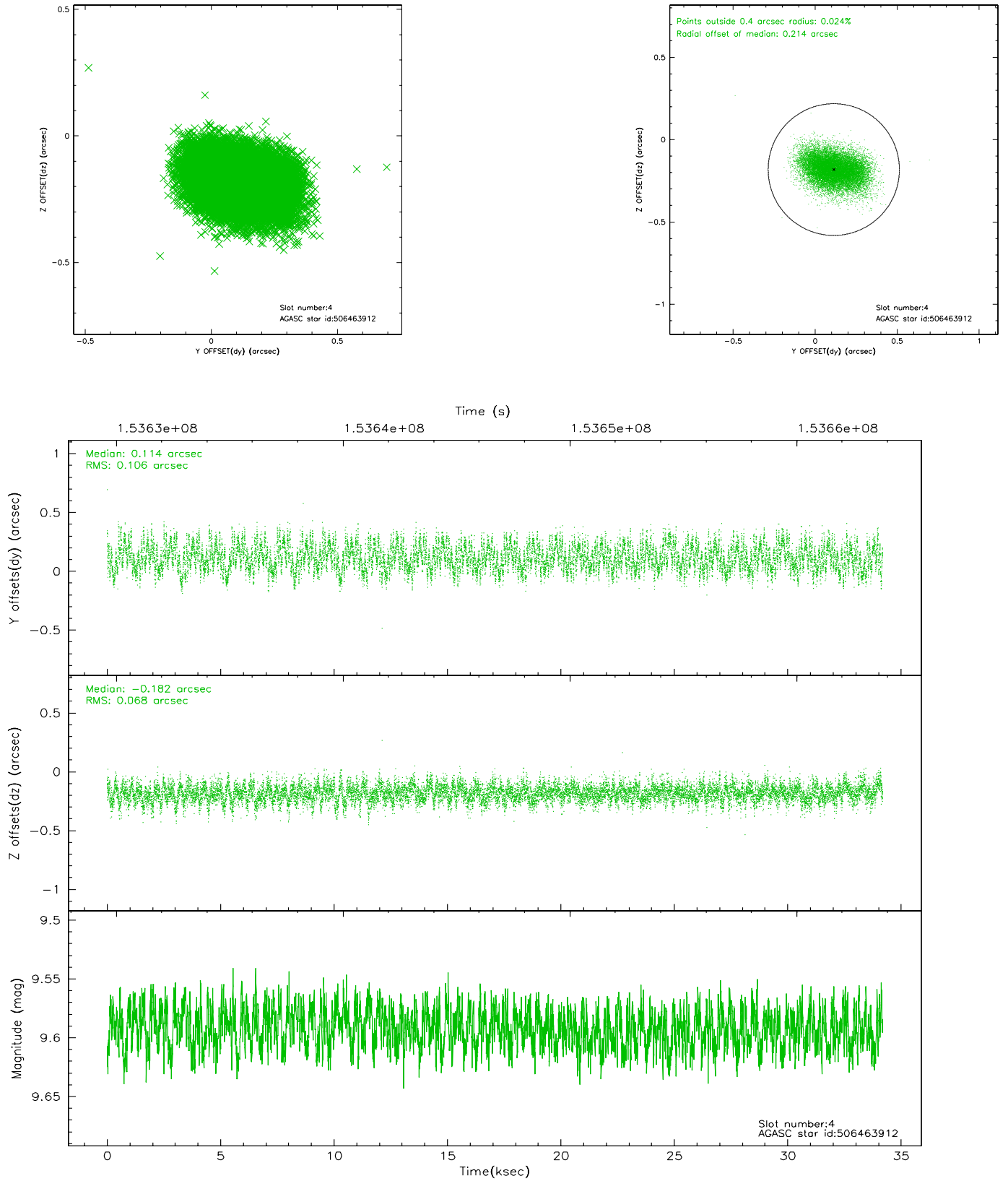
slot	status	id	mag	n_pts	med_dy	med_dz	dr1	dr2	ra	dec	mean_y	mean_z
0	FID	ACIS-S-2	7.11	8338	-0.005	0.011	0.009	0.015	0.000000	0.000000	-755.91	-1729.59
1	FID	ACIS-S-4	7.20	8337	-0.027	-0.000	0.006	0.012	0.000000	0.000000	2157.33	178.82
2	FID	ACIS-S-5	7.24	8338	0.001	-0.002	0.007	0.012	0.000000	0.000000	-1808.68	172.55
3	GUIDE	506463320	7.86	16615	0.082	0.092	0.079	0.121	226.349027	55.677313	-556.96	-229.61
4	GUIDE	506463912	9.59	16667	0.114	-0.182	0.136	0.216	225.721331	56.369086	-1692.22	2321.31
5	GUIDE	507380816	8.99	16671	-0.031	0.076	0.077	0.123	226.866183	55.265818	434.47	-1754.14
6	GUIDE	507381088	9.47	16662	-0.046	-0.116	0.087	0.140	227.169262	55.814749	1123.54	197.67
7	GUIDE	507382224	8.48	16674	-0.124	0.132	0.065	0.105	227.706518	55.422449	2172.29	-1246.70

2.4 Star Slots

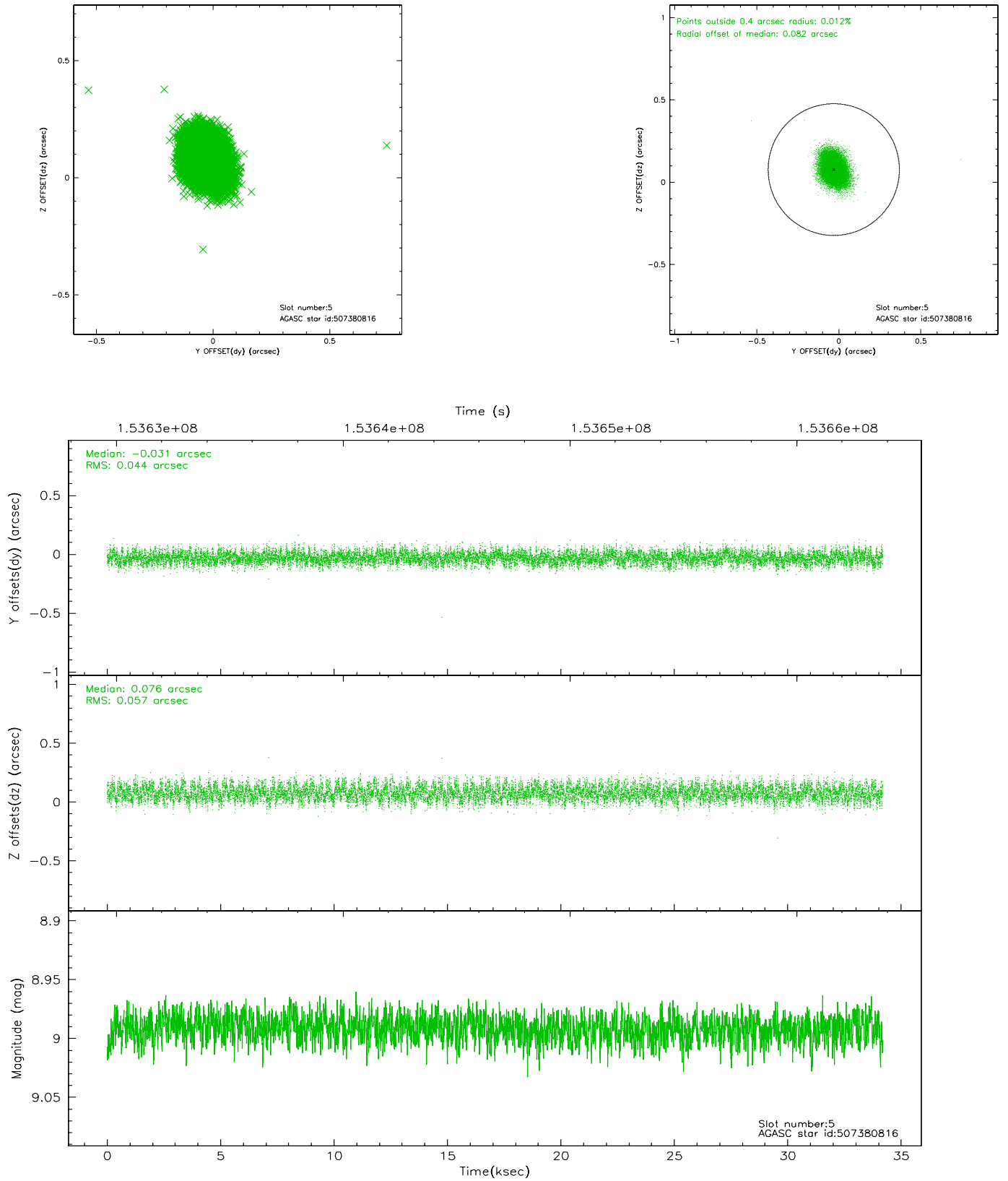
2.4.1 Slot 3



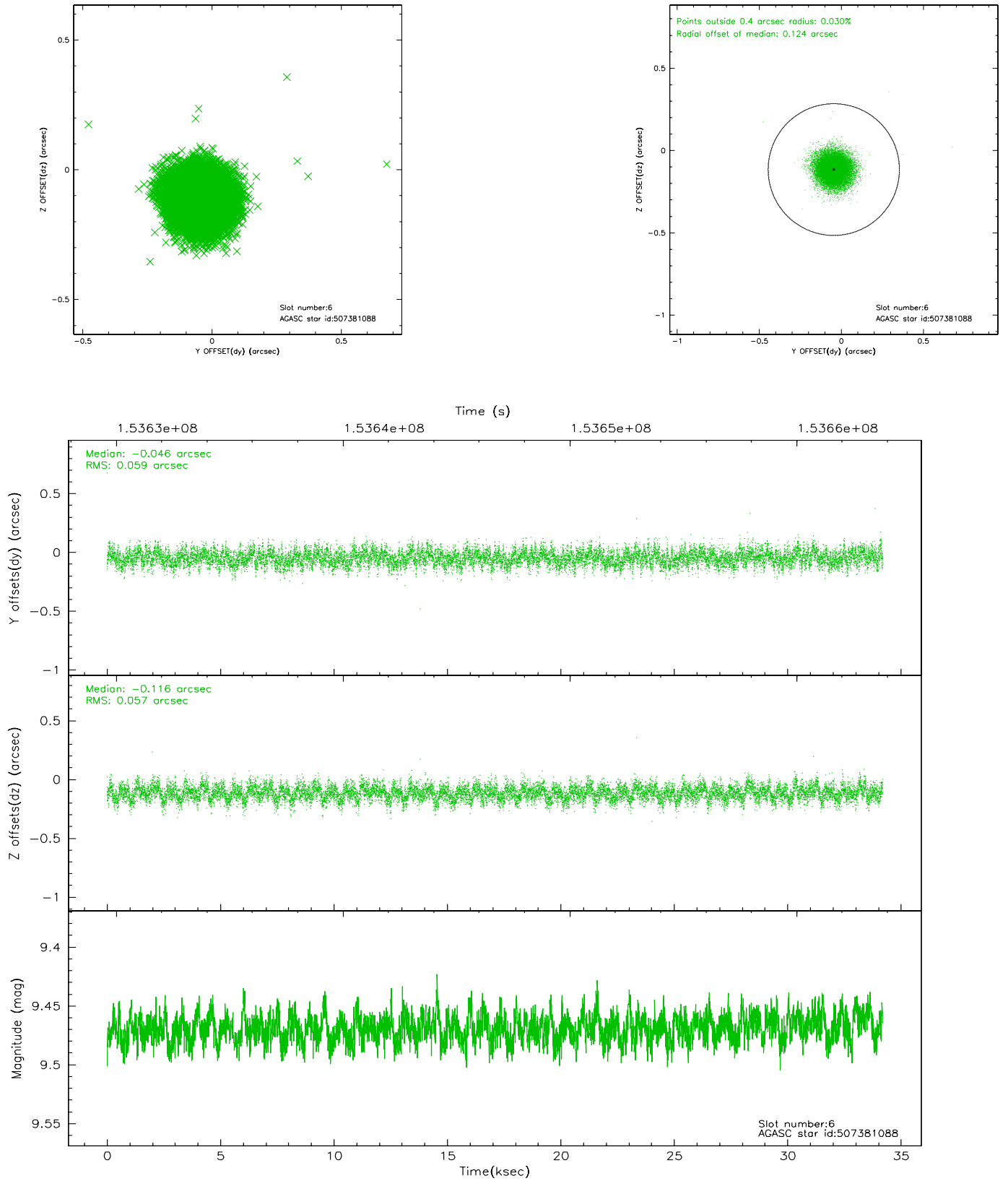
2.4.2 Slot 4



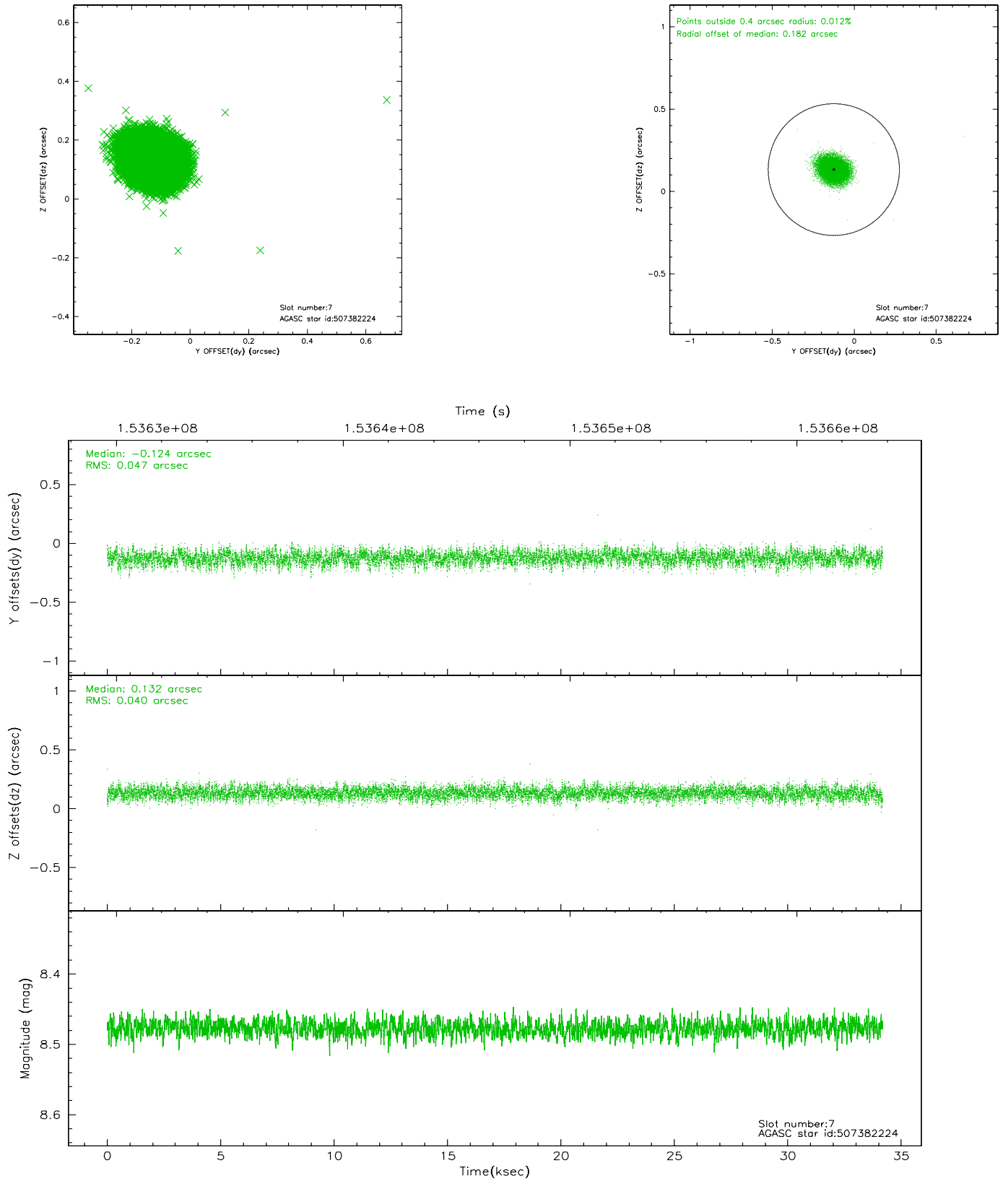
2.4.3 Slot 5



2.4.4 Slot 6

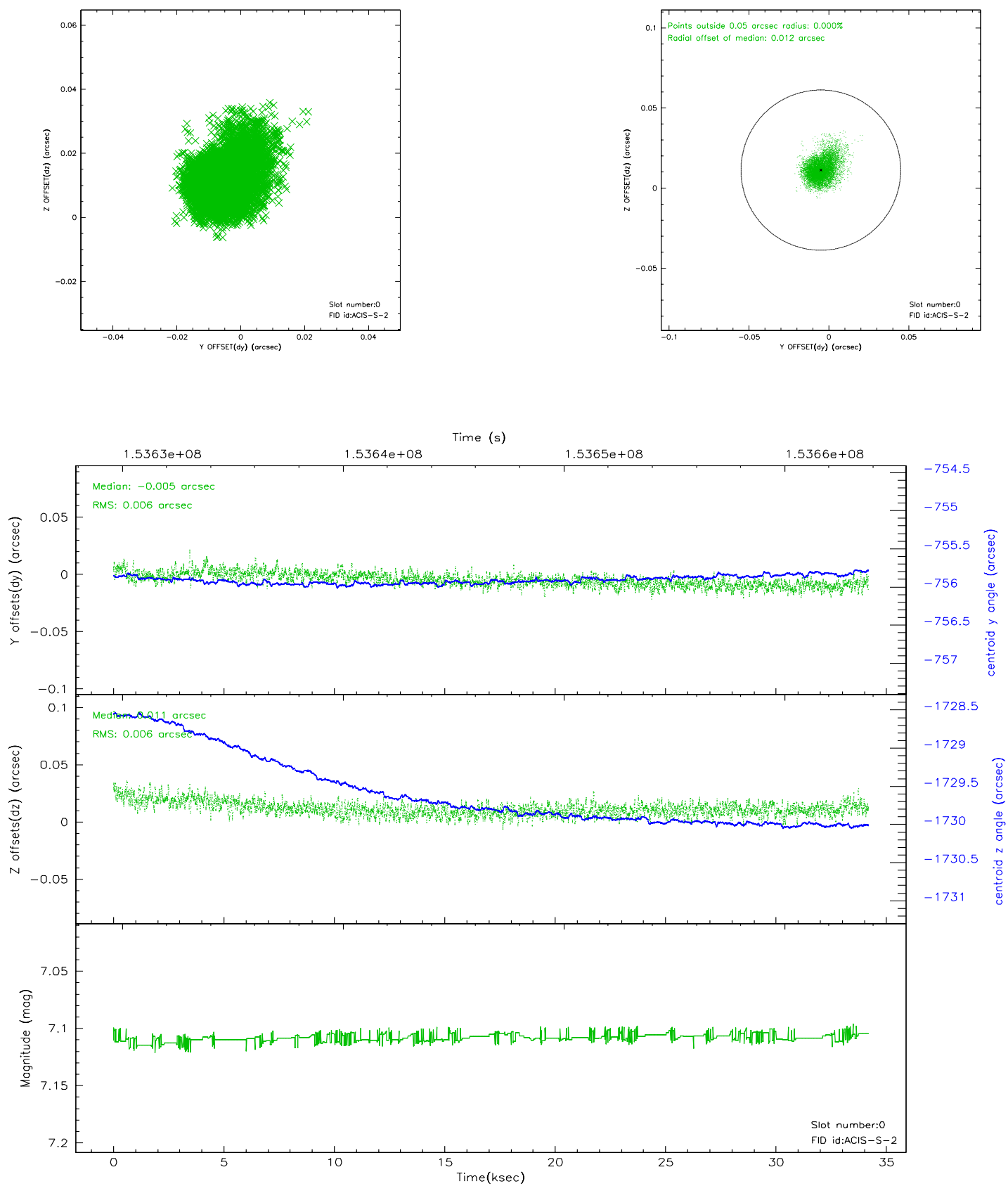


2.4.5 Slot 7

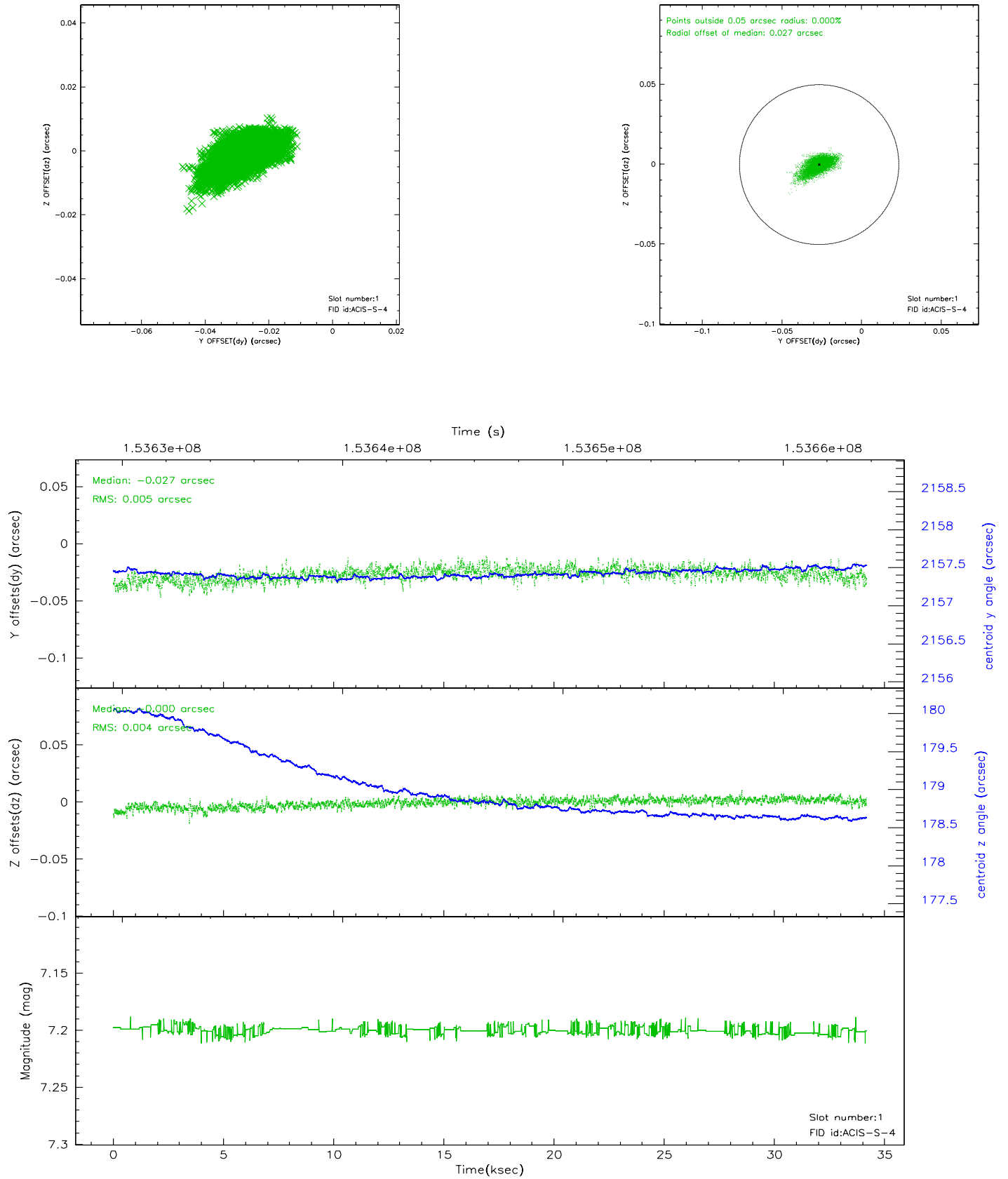


2.5 FID Slots

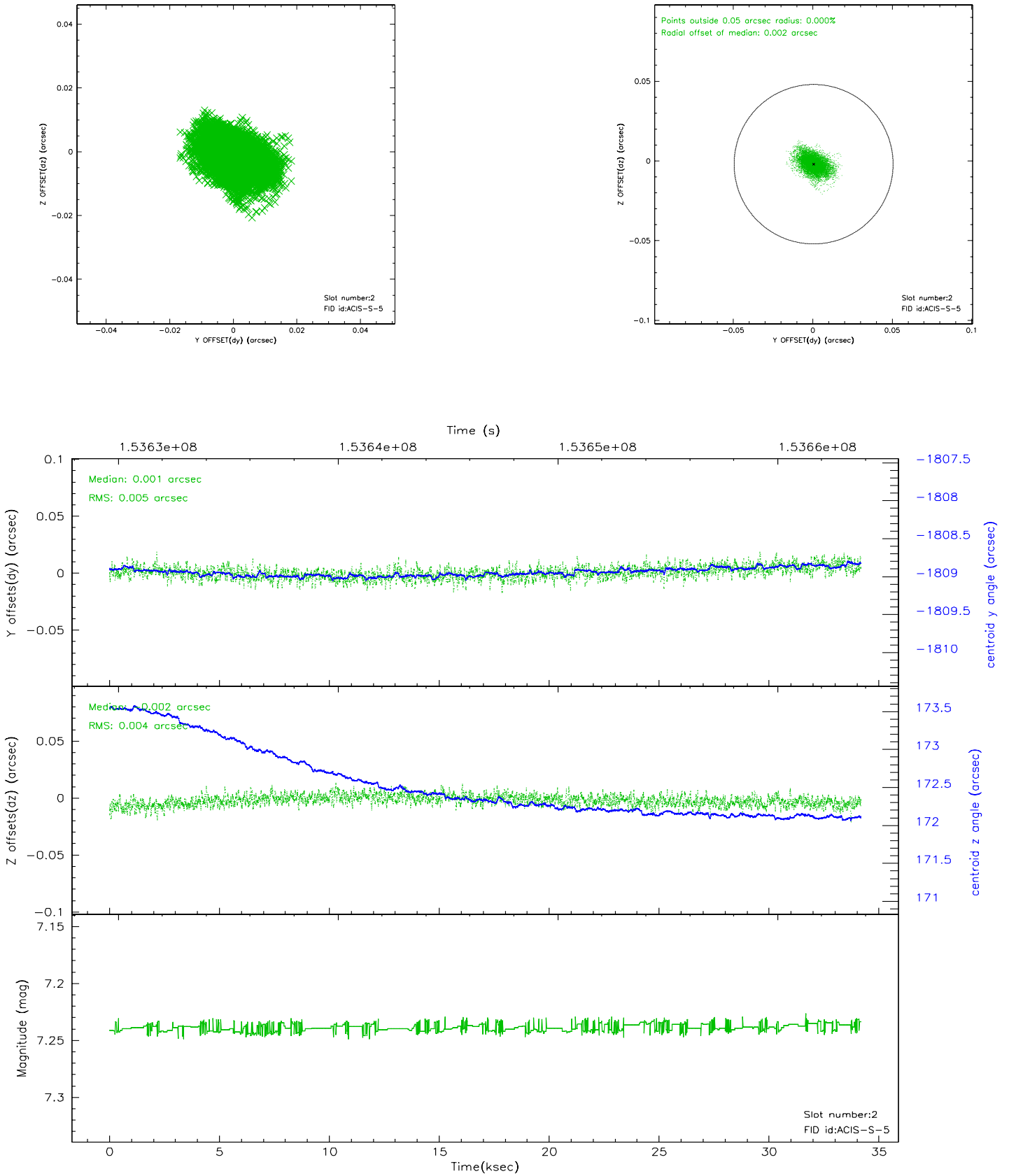
2.5.1 Slot 0



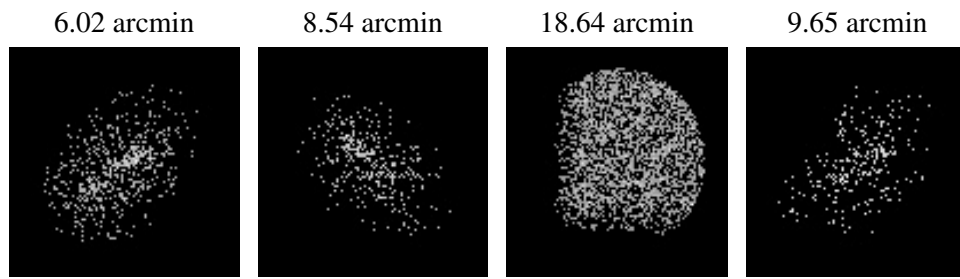
2.5.2 Slot 1



2.5.3 Slot 2



3 Point Sources



A Summary

A.1 Status

V&V Scientist	Beth Sundheim
V&V Date (YYYY-MM-DD)	2006.10.10
V&V Edition	1
V&V Disposition and Status	OK
V&V Charge Time	34.18

A.2 Comments