

V&V Reference Report

L2 ASCDS Version : 7.6.8.1

Observation 3436 - L2 Version 001
Chandra X-Ray Center

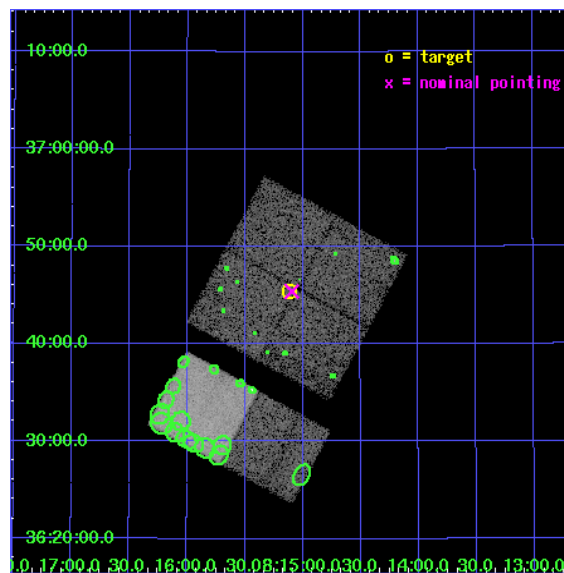
L2 Processing Date : Aug 31 2006

Contents

1	Front	2
2	OBI	3
2.1	OBI	3
2.1.1	Images	3
2.1.2	Bias	3
2.1.3	Parameters	4
2.1.4	Events	4
2.2	Compared Parameters	5
2.3	Aspect	6
2.4	Star Slots	9
2.4.1	Slot 3	9
2.4.2	Slot 4	10
2.4.3	Slot 5	11
2.4.4	Slot 6	12
2.4.5	Slot 7	13
2.5	FID Slots	14
2.5.1	Slot 0	14
2.5.2	Slot 1	15
2.5.3	Slot 2	16
3	Point Sources	17
A	Summary	18
A.1	Status	18
A.2	Comments	18

1 Front

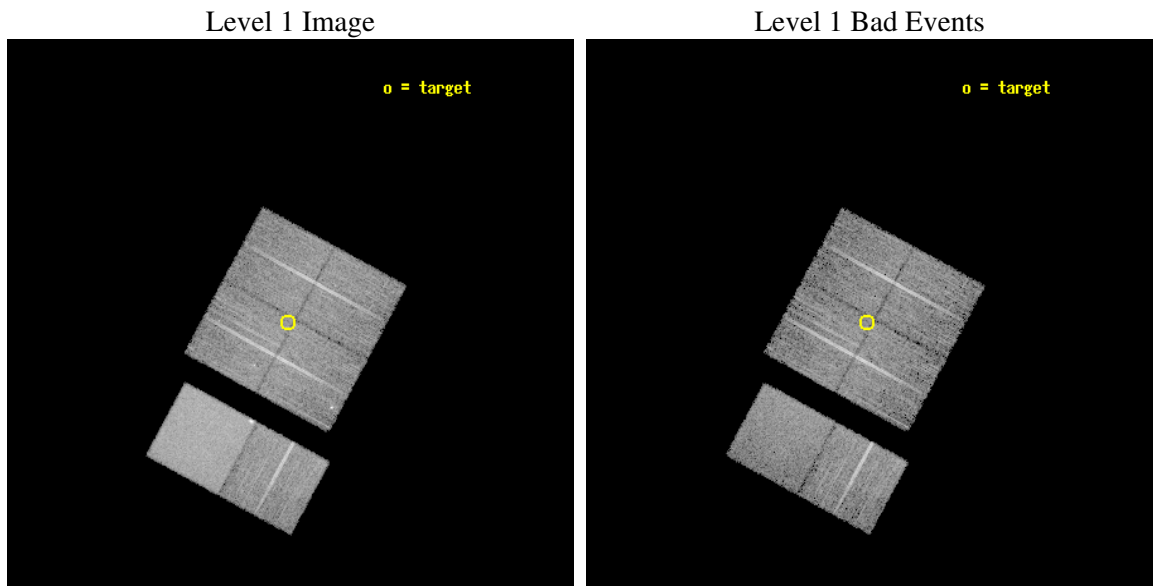
seq_num	500286
obs_id	3436
title	CHANDRA IDENTIFICATION OF THE X-RAY COUNTERPART OF GRB020127
observer	Dr Derek Fox
object	GRB020127
dtcycle	0
cycle	P
ra_targ	123.77925
dec_targ	36.757139
ra_nom	123.77350212787
dec_nom	36.75671108
roll_nom	208.49194006651
revision	2
ontime	9964.8000092804
livetime	9838.6197114807
ontime0	9964.8000092804
ontime1	9964.8000092804
ontime2	9964.8000092804
ontime3	9964.8000092804
ontime6	9964.8000092804
ontime7	9964.8000092804
l2events	97292



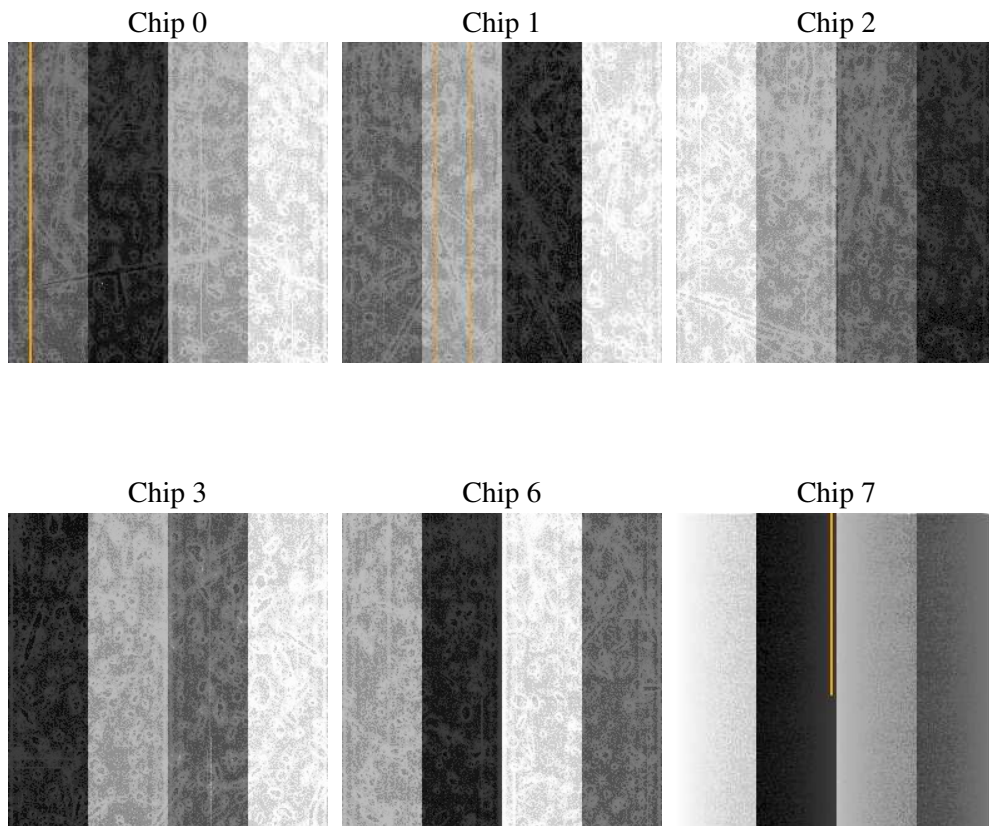
2 OBI

2.1 OBI

2.1.1 Images



2.1.2 Bias



2.1.3 Parameters

obi_num	0
ascdsver	7.6.8.1
caldbver	3.2.3
date	2006-08-31T02:21:29
revision	2

sched_exp_time	10000.000000
ontime	9969.3293219358
ontime0	9969.3293219358
ontime1	9969.3293219358
ontime2	9969.3293219358
ontime3	9969.3293219358
ontime6	9969.3293219358
ontime7	9969.3293219358
l1events	420995

2.1.4 Events

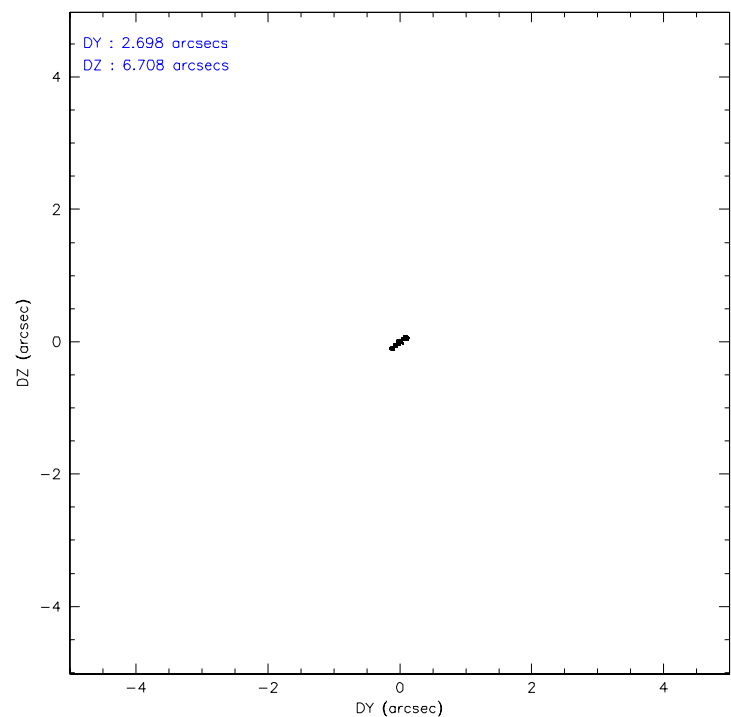
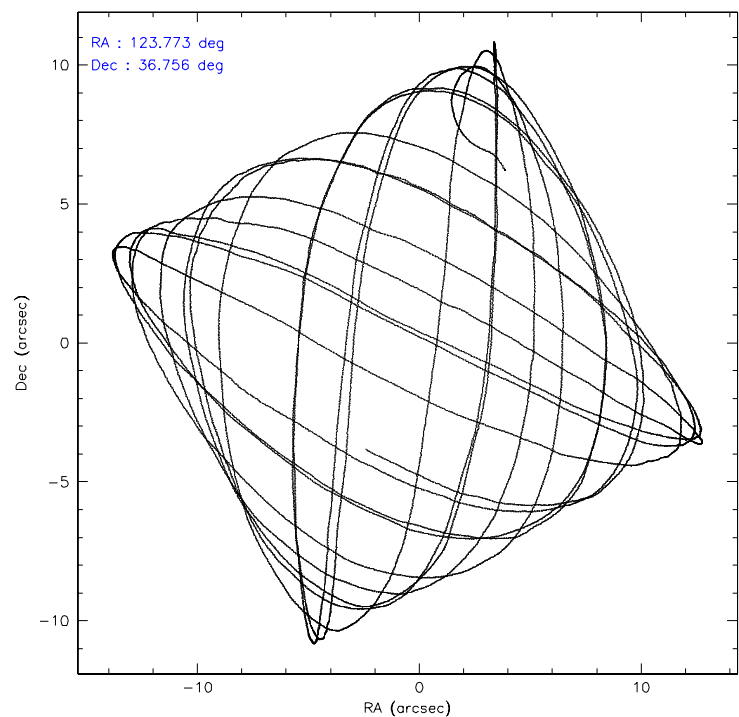
	ccd 0	ccd 1	ccd 2	ccd 3	ccd 6	ccd 7
level 1 events	59878	58652	63768	65048	66756	106893
rejected events	50312	48767	54160	55022	56688	51991
rejected %	84%	83%	84%	84%	84%	48%

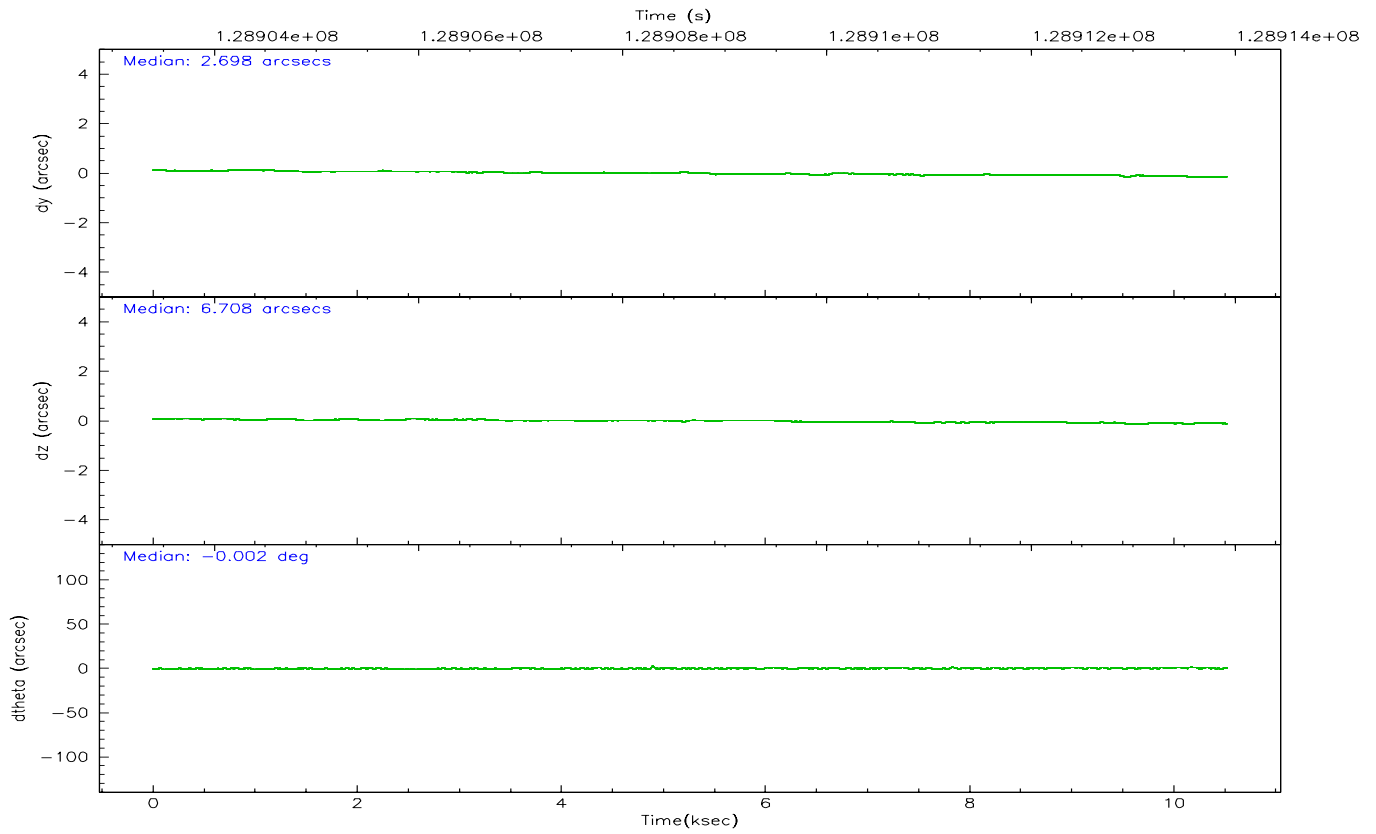
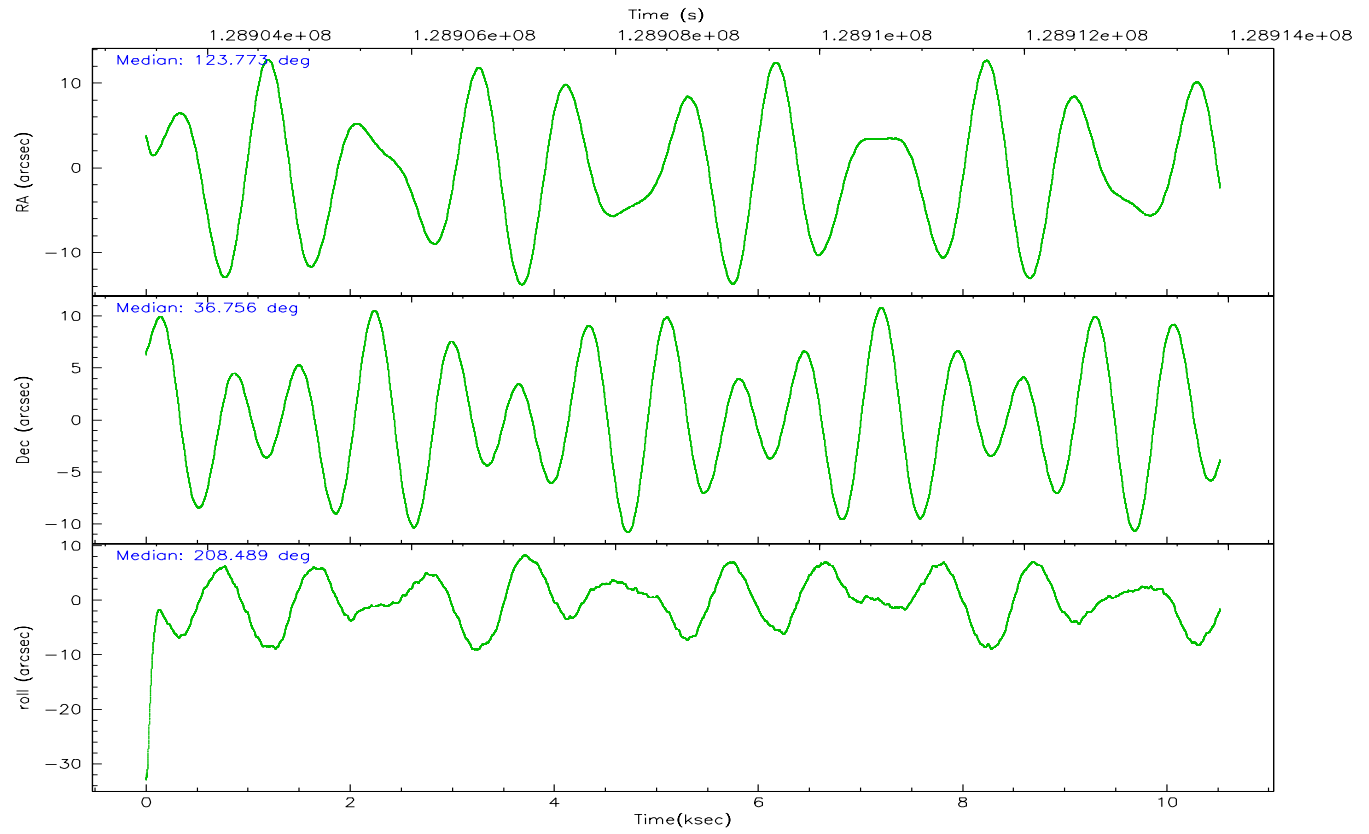
	ccd 0	ccd 1	ccd 2	ccd 3	ccd 6	ccd 7
grade 0 events	4831	4866	4936	5318	5072	5221
	8%	8%	7%	8%	7%	4%
grade 1 events	24	27	32	41	42	39
	0%	0%	0%	0%	0%	0%
grade 2 events	1877	1804	1855	1761	1840	12890
	3%	3%	2%	2%	2%	12%
grade 3 events	774	857	741	800	740	3284
	1%	1%	1%	1%	1%	3%
grade 4 events	733	795	764	737	818	3239
	1%	1%	1%	1%	1%	3%
grade 5 events	2260	2362	2091	2442	2791	5615
	3%	4%	3%	3%	4%	5%
grade 6 events	1352	1566	1314	1417	1604	30310
	2%	2%	2%	2%	2%	28%
grade 7 events	48027	46375	52035	52532	53849	46295
	80%	79%	81%	80%	80%	43%

2.2 Compared Parameters

Parameter	Planned	Actual	Parameter	Planned	Actual
Instrument	ACIS	ACIS	Obspar format version number	6	6
Detector	ACIS-012367	ACIS-012367	Obspar file type	PREDICTED	ACTUAL
Grating	NONE	NONE	Obspar update status	NONE	UPDATED
Data mode	FAINT	FAINT	On-chip summing requested	N	N
Observation mode	POINTING	POINTING	Subarray requested	NONE	NONE
Pointing RA	123.791235	123.773502127867	Alternating exposures requested	N	N
Pointing Dec	36.780095	36.75671107999971	Primary exposure time	0.000000	3.2
Pointing Roll	208.272665	208.49194006651			
SIM focus pos (mm)	-0.782348	-0.7809083437167272			
SIM defocus (mm)	0	0.001439871863259334			
SIM translation stage pos (mm)	-233.592463	-233.5874344608287			
SIM translation stage offset (mm)	0	-0.005018542100998502			
Observation start time	128903923.184000	128902794.09437			
Observation start date	2002-01-31T22:37:39	2002-01-31T22:19:54			
Observation end time	128913923.184000	128915386.21988			
Observation end date	2002-02-01T01:24:19	2002-02-01T01:49:46			
Read mode	TIMED	TIMED			

2.3 Aspect



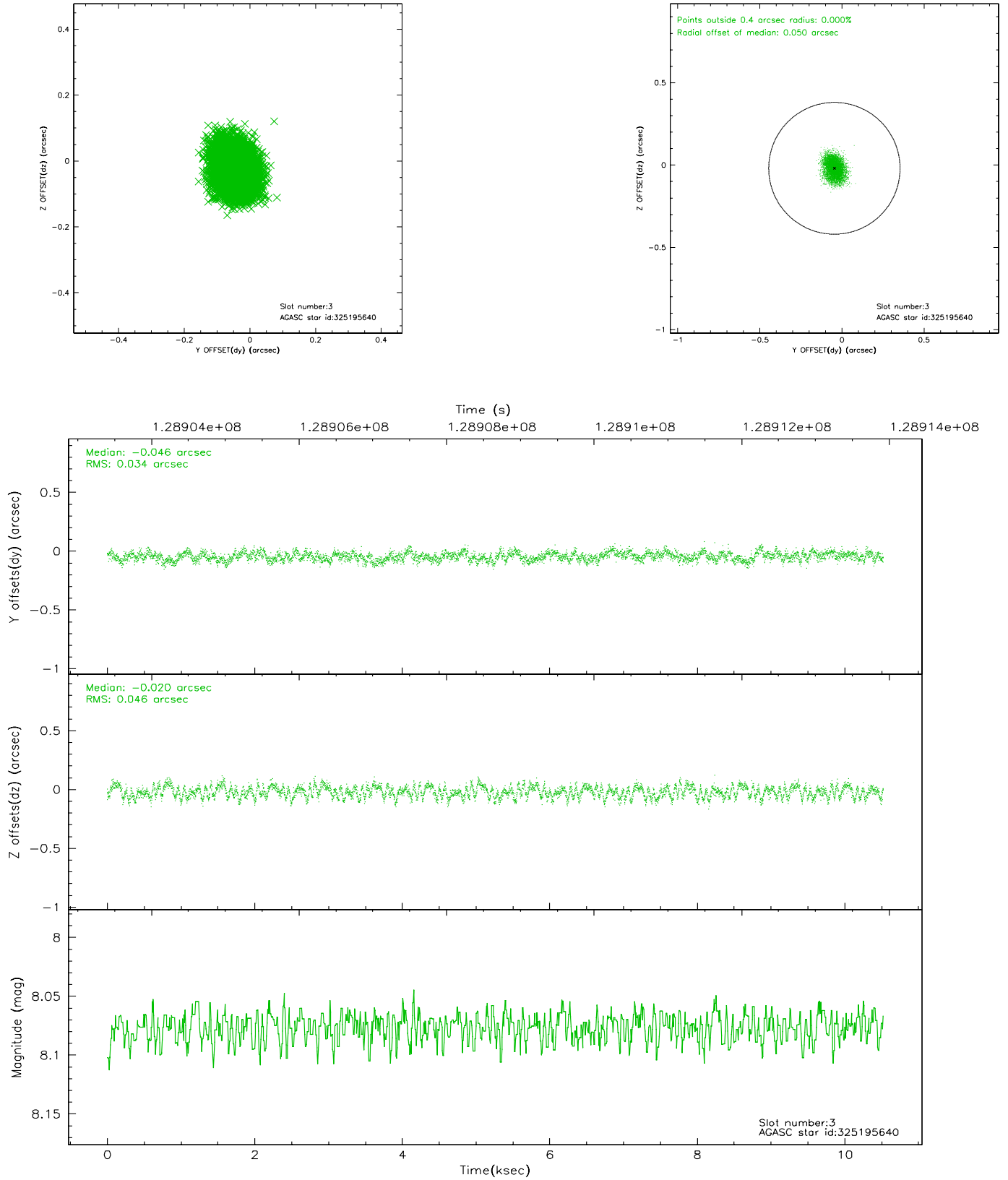


Slot Statistics

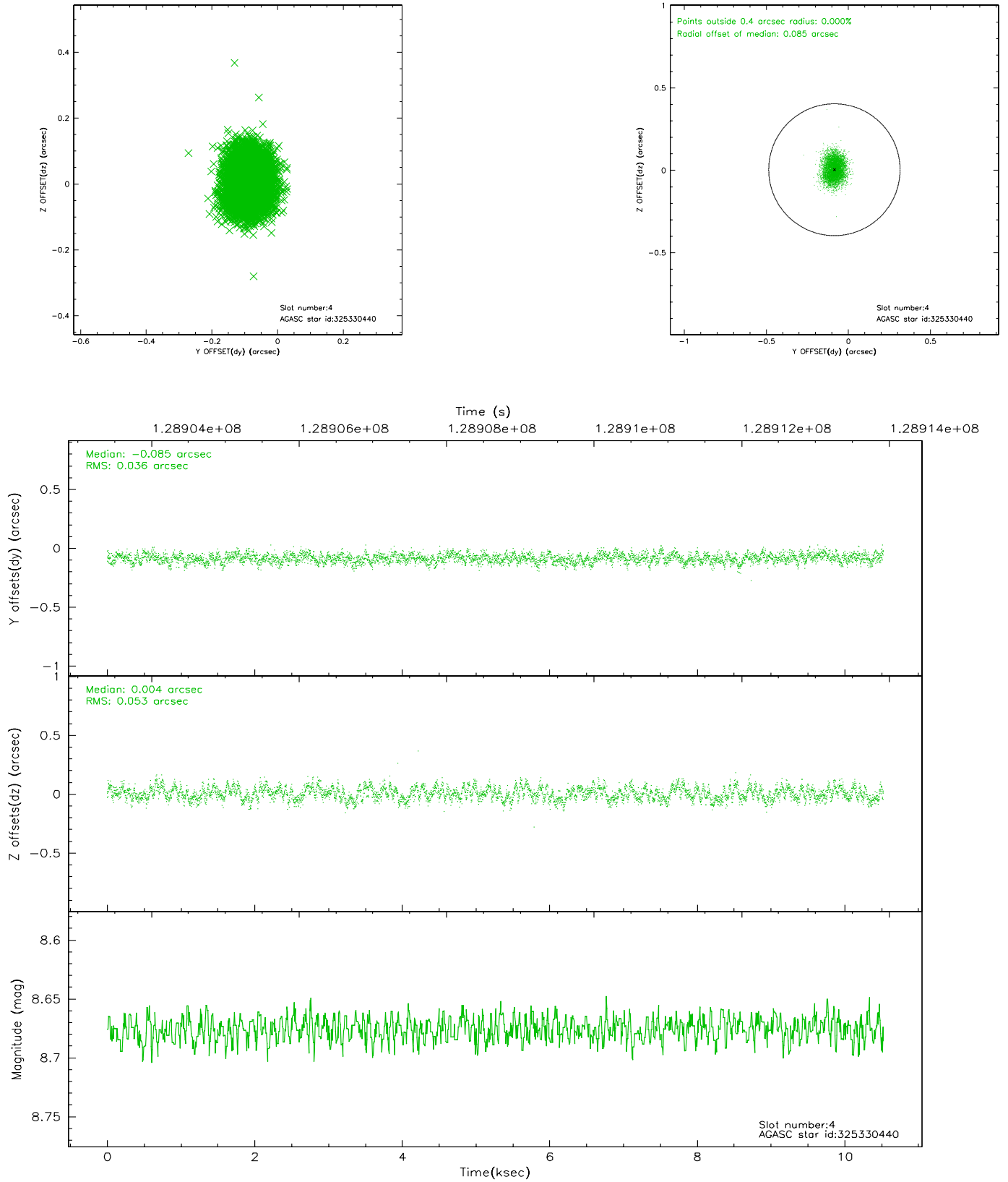
slot	status	id	mag	n_pts	med_dy	med_dz	dr1	dr2	ra	dec	mean_y	mean_z
0	FID	ACIS-I-1	7.25	2567	-0.059	-0.076	0.006	0.010	0.000000	0.000000	937.05	-830.16
1	FID	ACIS-I-3	7.45	2567	-0.004	0.172	0.007	0.012	0.000000	0.000000	54.88	-963.46
2	FID	ACIS-I-5	7.23	2567	-0.027	-0.024	0.005	0.011	0.000000	0.000000	-1811.09	1067.09
3	GUIDE	325195640	8.08	5133	-0.046	-0.020	0.062	0.097	123.704872	36.496301	703.18	780.66
4	GUIDE	325330440	8.68	5135	-0.085	0.004	0.068	0.109	124.000460	37.423677	-1625.17	-1758.35
5	GUIDE	325194168	9.06	5125	0.112	-0.024	0.111	0.169	122.864285	36.789668	2330.28	-1308.49
6	GUIDE	325332176	9.29	5129	0.002	0.038	0.118	0.180	123.933904	36.332369	398.56	1614.40
7	GUIDE	325331856	9.40	5127	0.022	-0.003	0.097	0.157	124.137510	37.281647	-1730.26	-1122.41

2.4 Star Slots

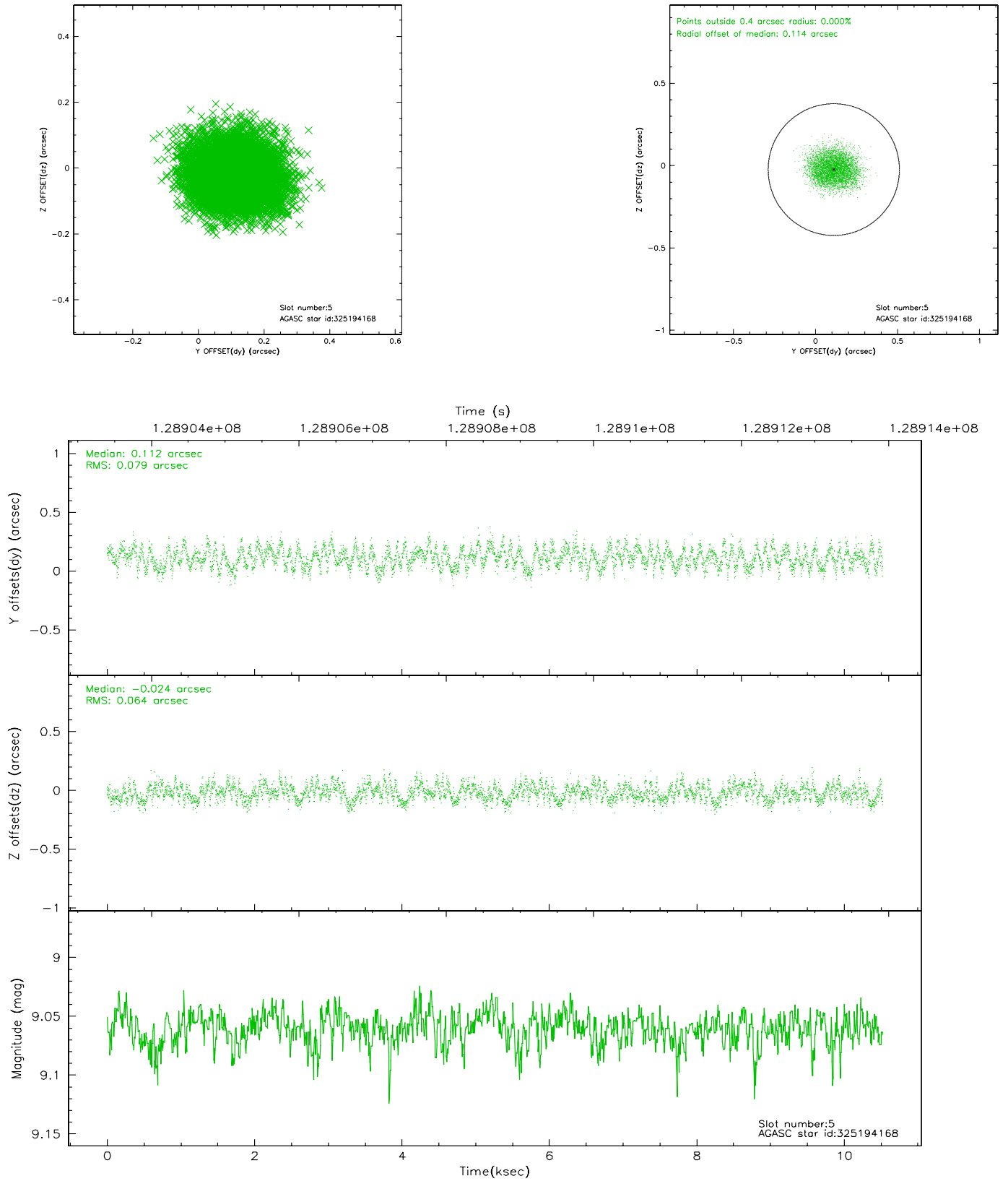
2.4.1 Slot 3



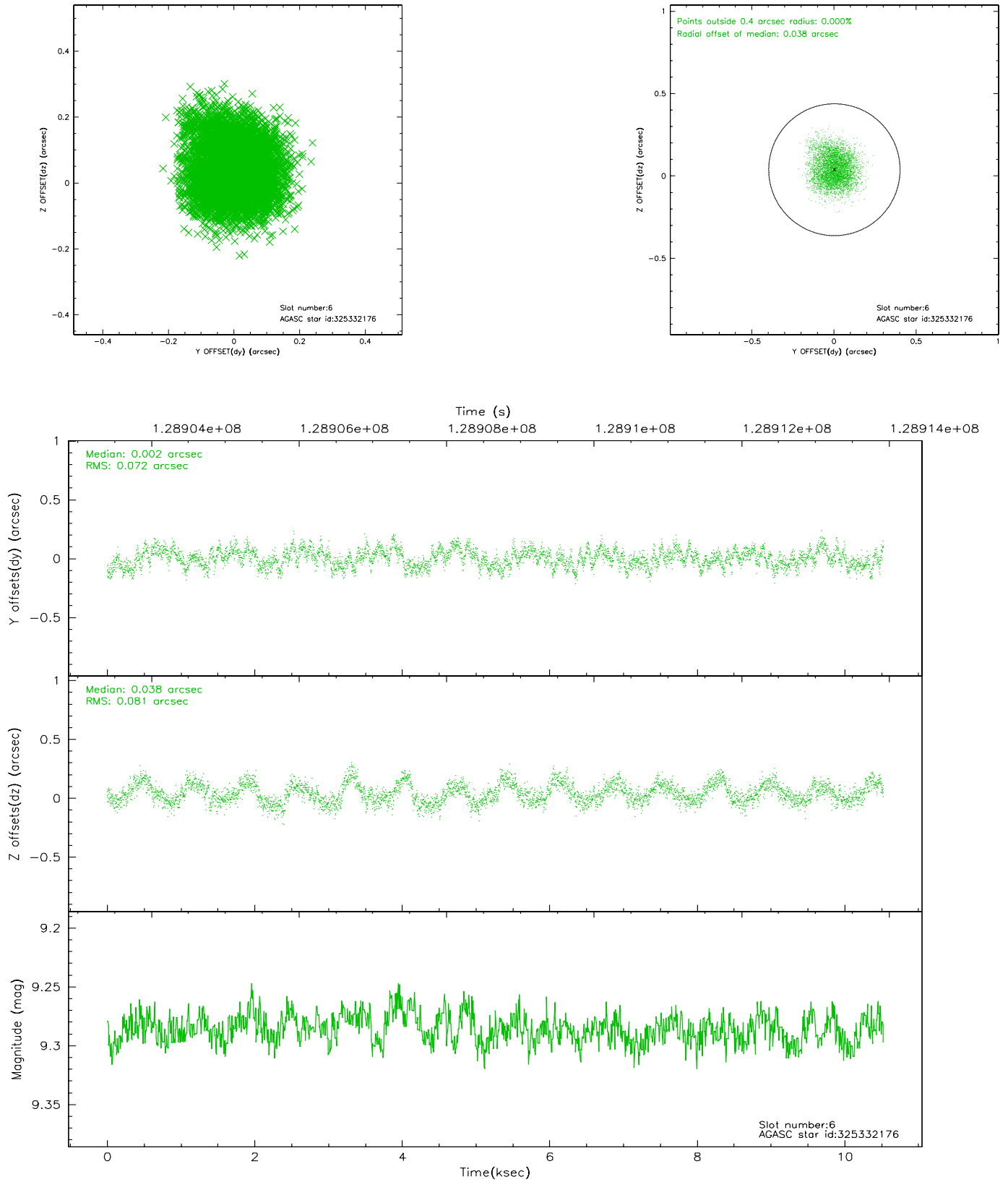
2.4.2 Slot 4



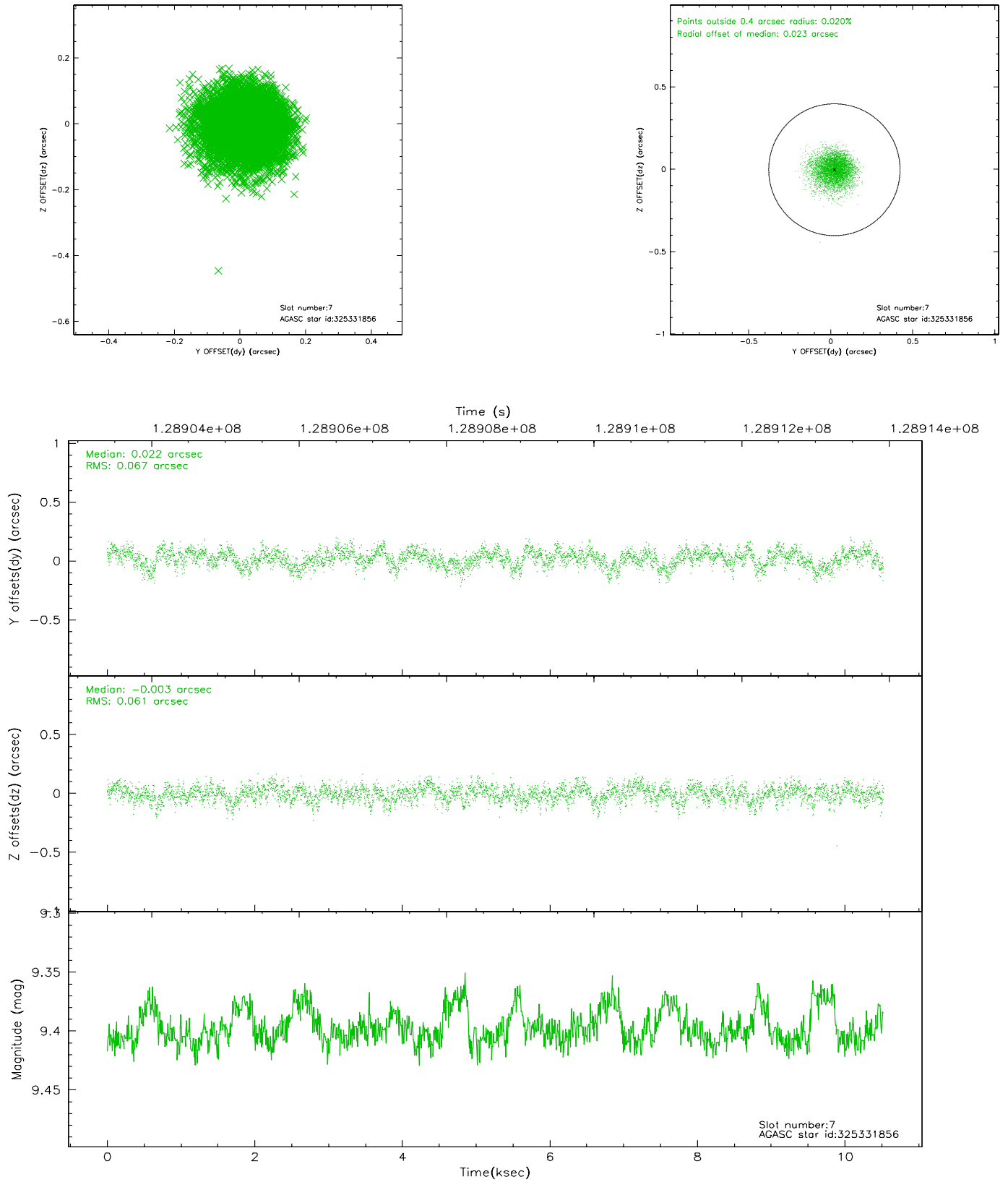
2.4.3 Slot 5



2.4.4 Slot 6

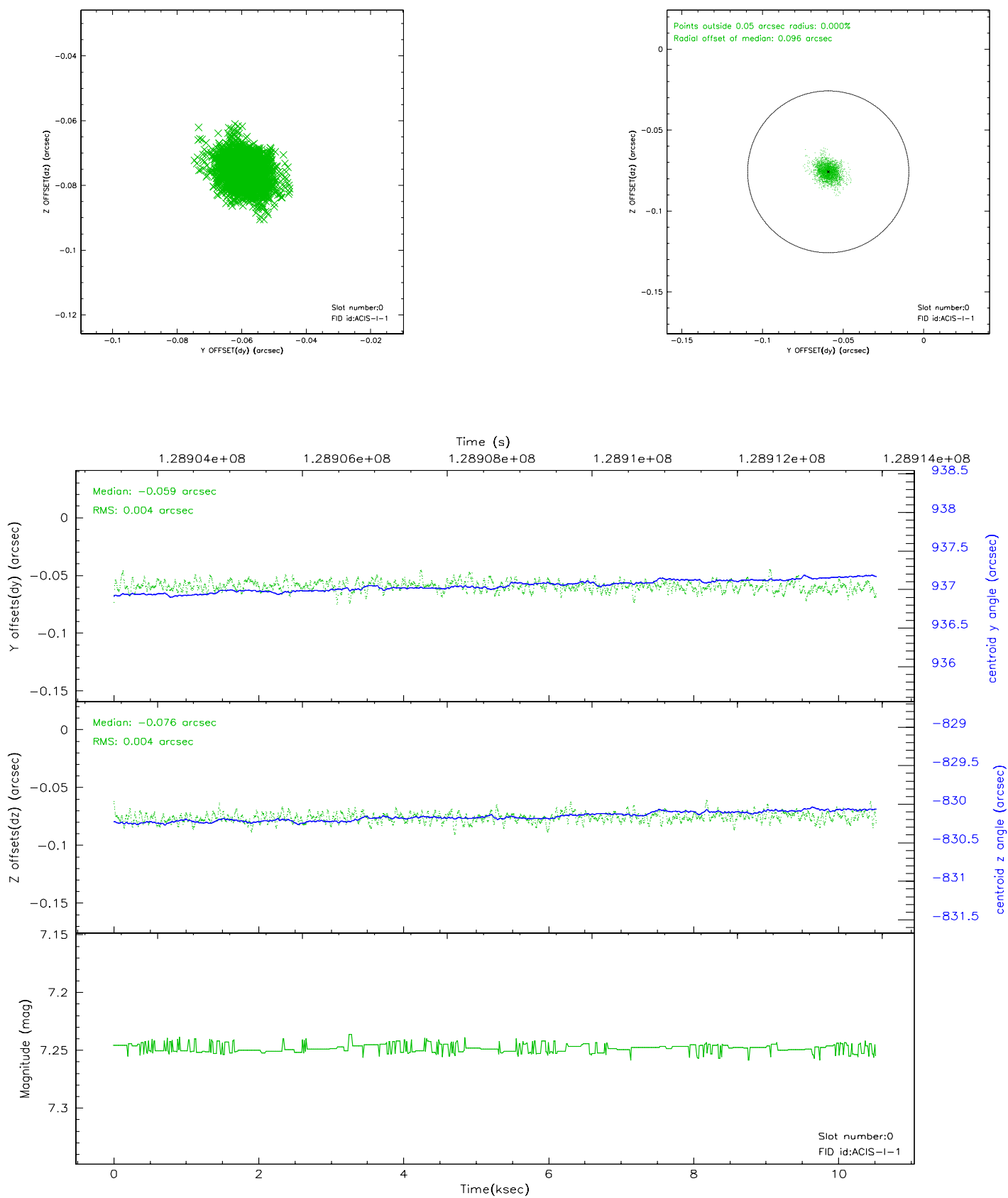


2.4.5 Slot 7

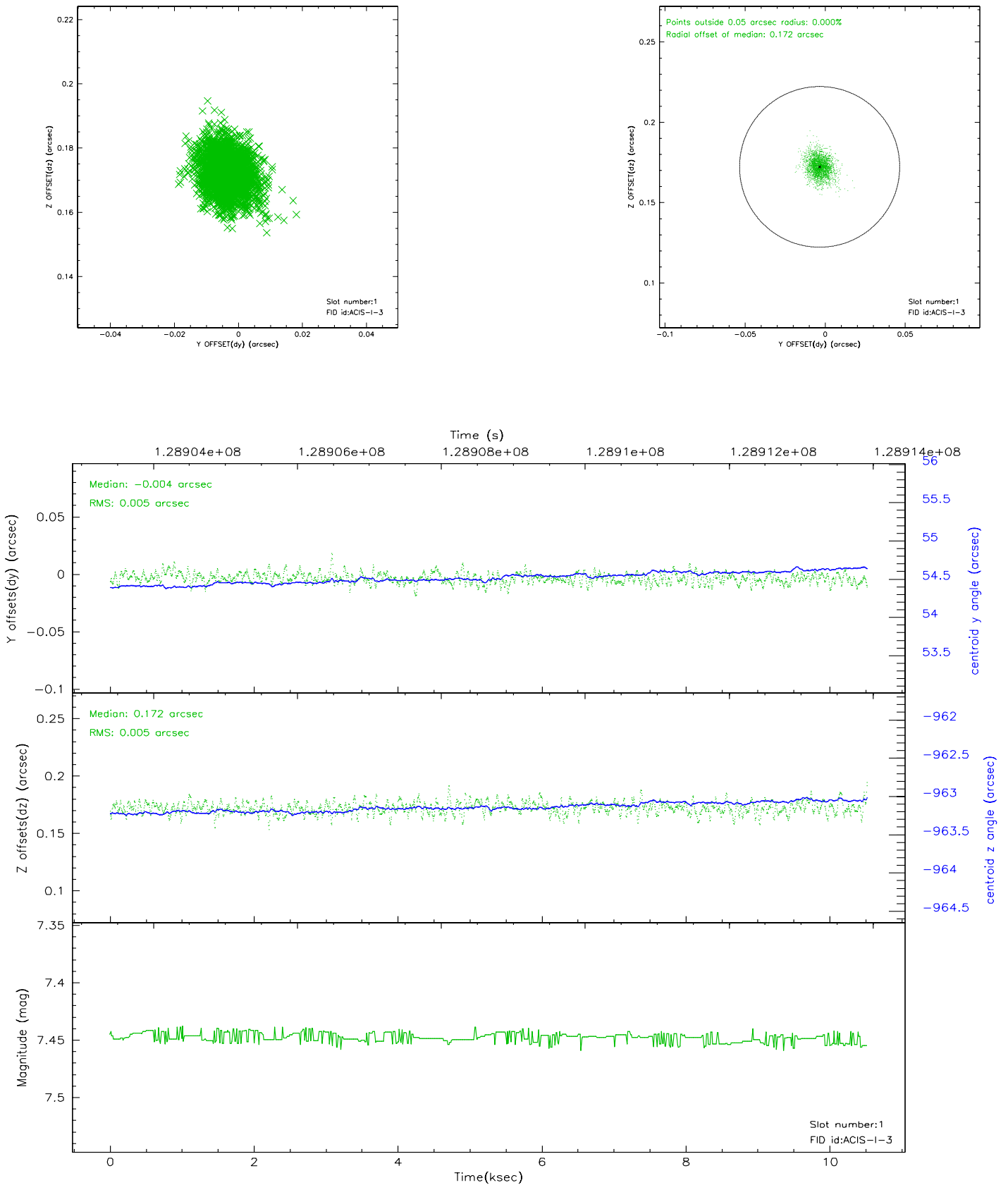


2.5 FID Slots

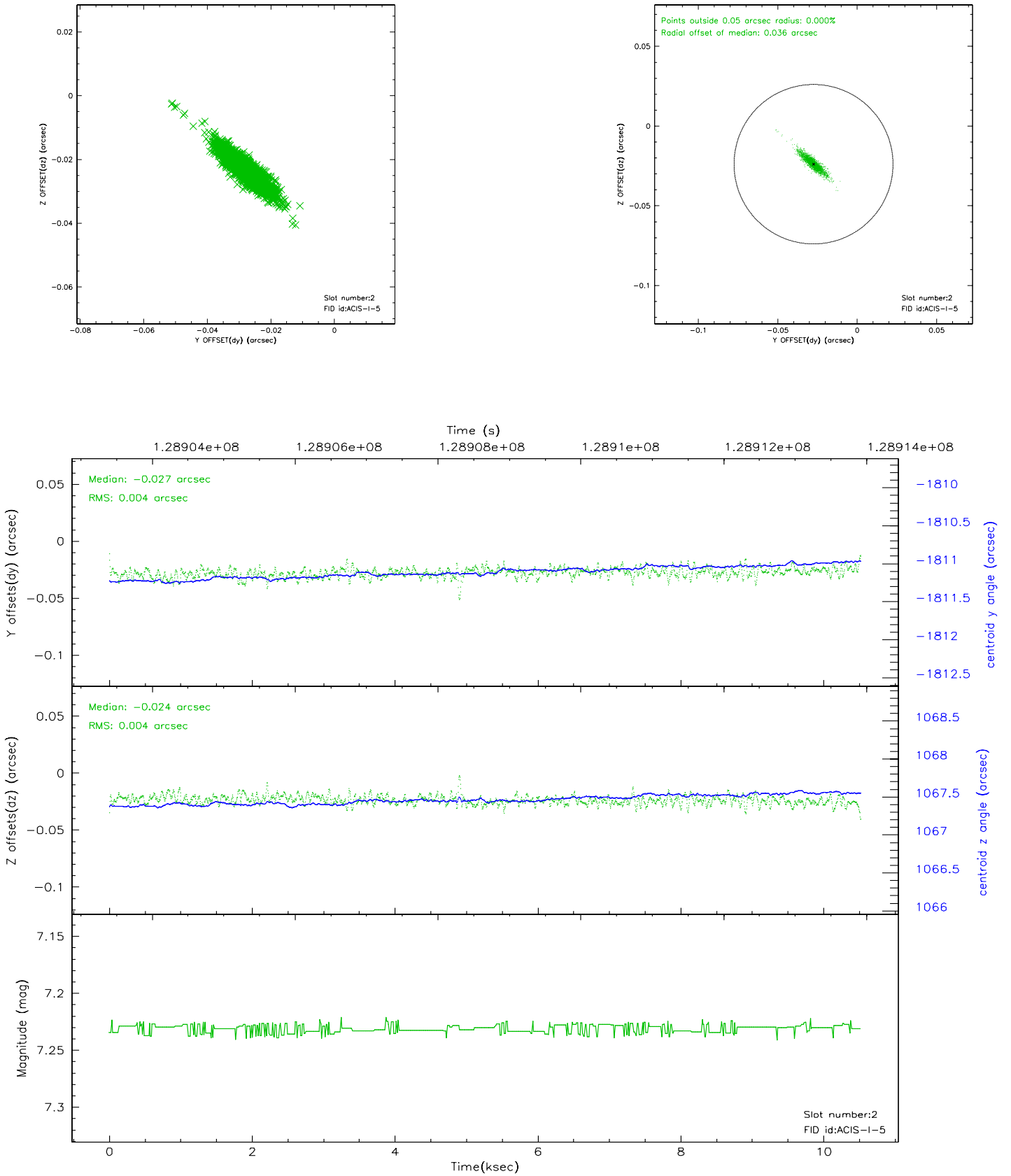
2.5.1 Slot 0



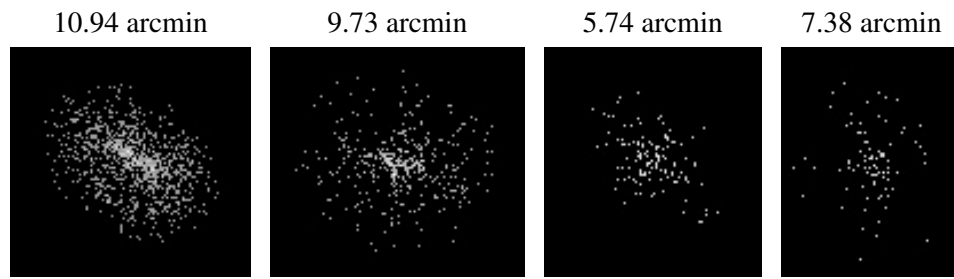
2.5.2 Slot 1



2.5.3 Slot 2



3 Point Sources



A Summary

A.1 Status

V&V Scientist	Jen Lauer
V&V Date (YYYY-MM-DD)	2006.08.31
V&V Edition	1
V&V Disposition and Status	OK
V&V Charge Time	9.968

A.2 Comments