

V&V Reference Report

L2 ASCDS Version : 7.6.9

Observation 2830 - L2 Version 001
Chandra X-Ray Center

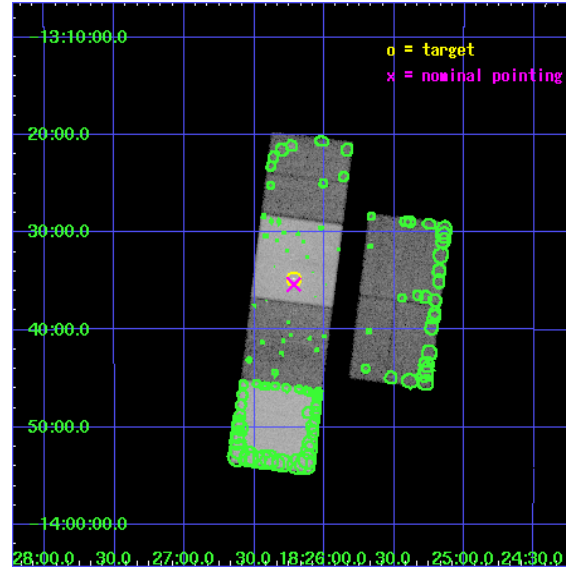
L2 Processing Date : Oct 11 2006

Contents

1	Front	2
2	OBI	3
2.1	OBI	3
2.1.1	Images	3
2.1.2	Bias	3
2.1.3	Parameters	4
2.1.4	Events	4
2.2	Compared Parameters	5
2.3	Aspect	6
2.4	Star Slots	9
2.4.1	Slot 3	9
2.4.2	Slot 4	10
2.4.3	Slot 5	11
2.4.4	Slot 6	12
2.4.5	Slot 7	13
2.5	FID Slots	14
2.5.1	Slot 0	14
2.5.2	Slot 1	15
2.5.3	Slot 2	16
3	Point Sources	17
A	Summary	18
A.1	Status	18
A.2	Comments	18

1 Front

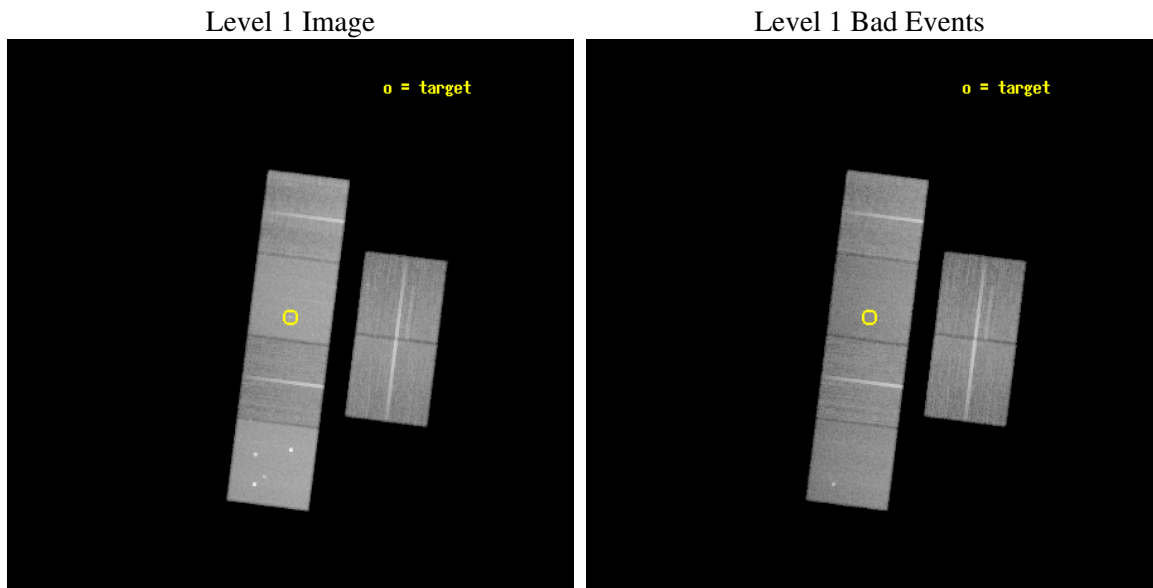
seq_num	500280
obs_id	2830
title	SPATIAL AND SPECTRAL STUDIES OF X-RAYS FROM PSR B1823-13 AND ITS COMPACT NEBULA
observer	DR. SACHIKO TSURUTA
object	PSR B1823-13
dtcycle	0
cycle	P
ra_targ	276.554875
dec_targ	-13.579778
ra_nom	276.55436983897
dec_nom	-13.58945044723
roll_nom	277.18159815922
revision	2
ontime	41359.999845922
livetime	40836.274623871
ontime2	41359.999845922
ontime3	41359.999845922
ontime5	41359.999845922
ontime6	41356.758875638
ontime7	41359.999845922
ontime8	41359.999845922
l2events	471135



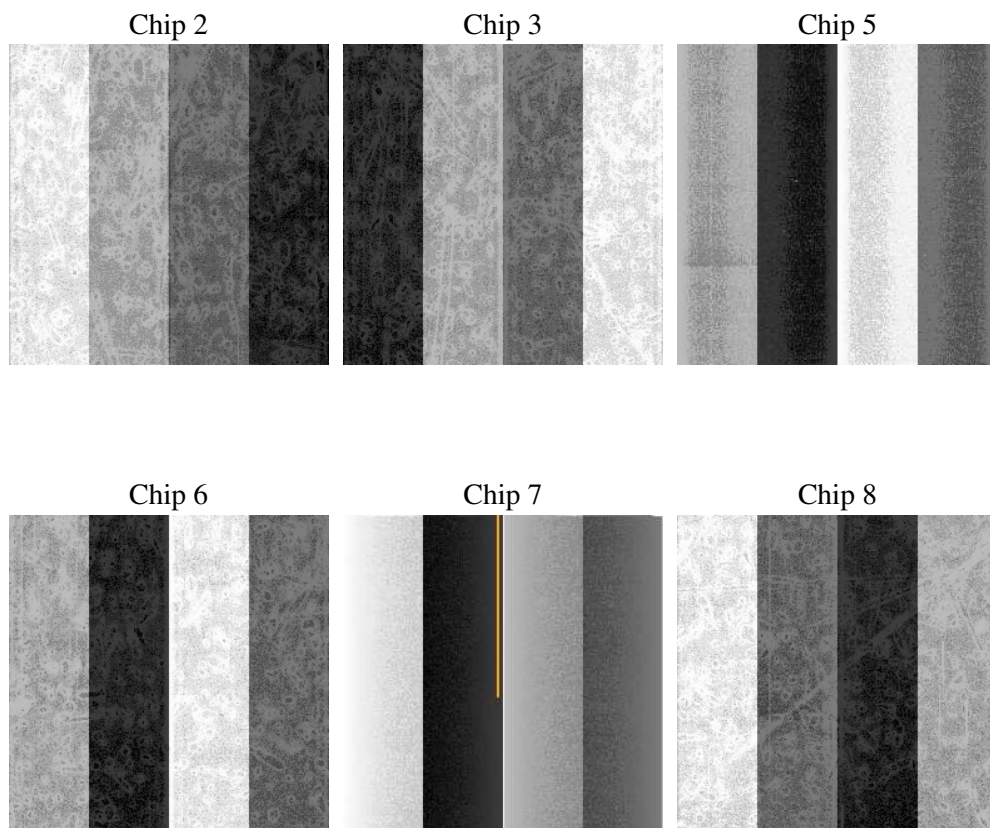
2 OBI

2.1 OBI

2.1.1 Images



2.1.2 Bias



2.1.3 Parameters

obi_num	0
ascdsver	7.6.9
caldsver	3.2.3
date	2006-10-11T13:37:50
revision	2

sched_exp_time	41400.000000
ontime	41364.87853834
ontime2	41364.87853834
ontime3	41364.87853834
ontime5	41364.87853834
ontime6	41361.637568057
ontime7	41364.87853834
ontime8	41364.87853834
l1events	1885511

2.1.4 Events

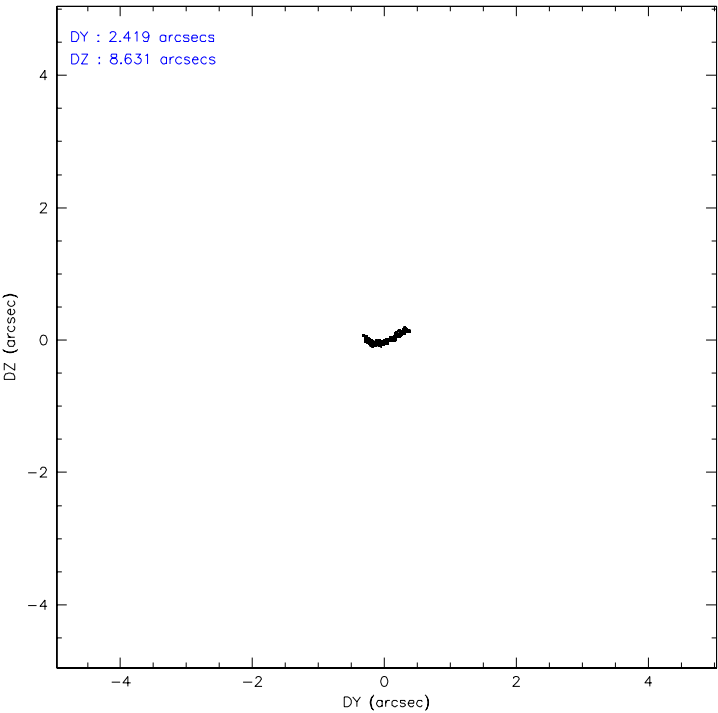
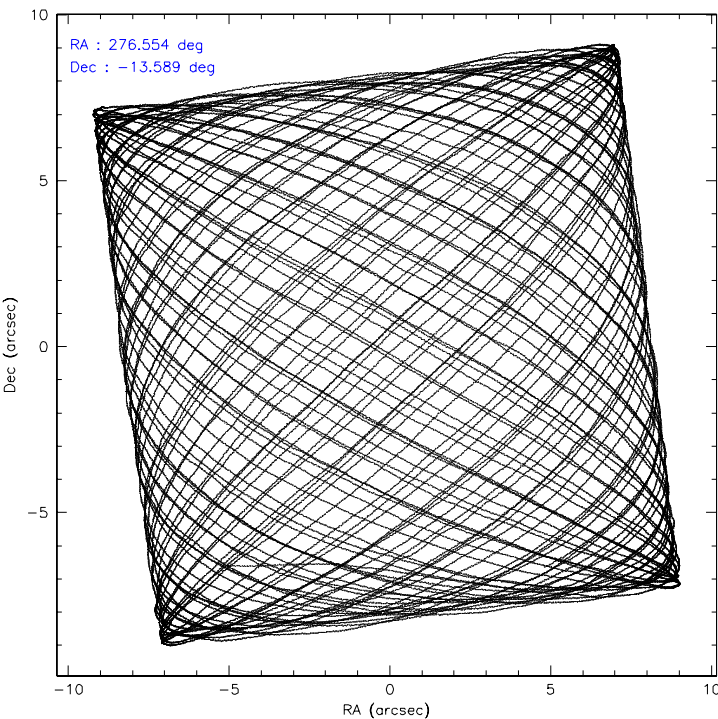
	ccd 2	ccd 3	ccd 5	ccd 6	ccd 7	ccd 8
level 1 events	260841	249741	409859	270288	373350	321432
rejected events	226536	216570	212610	230674	209231	251949
rejected %	86%	86%	51%	85%	56%	78%

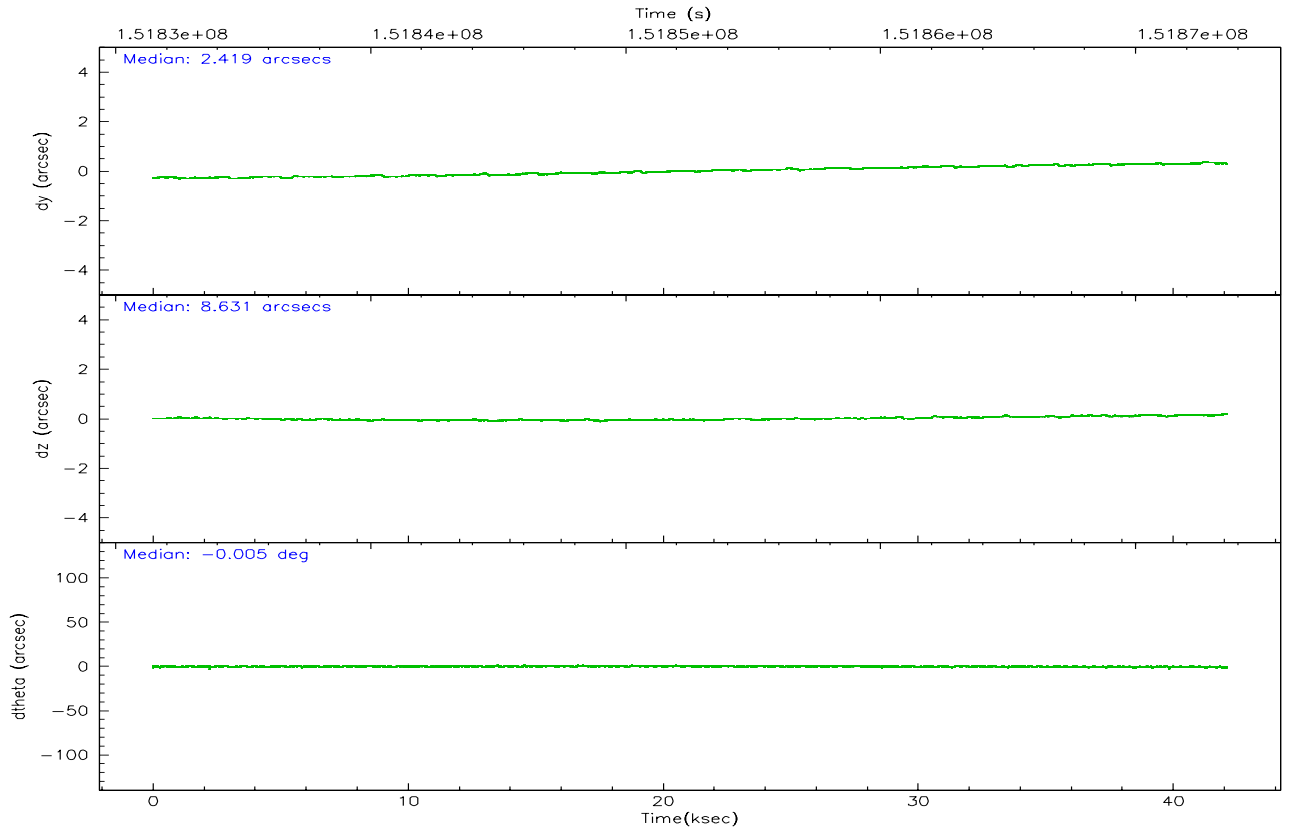
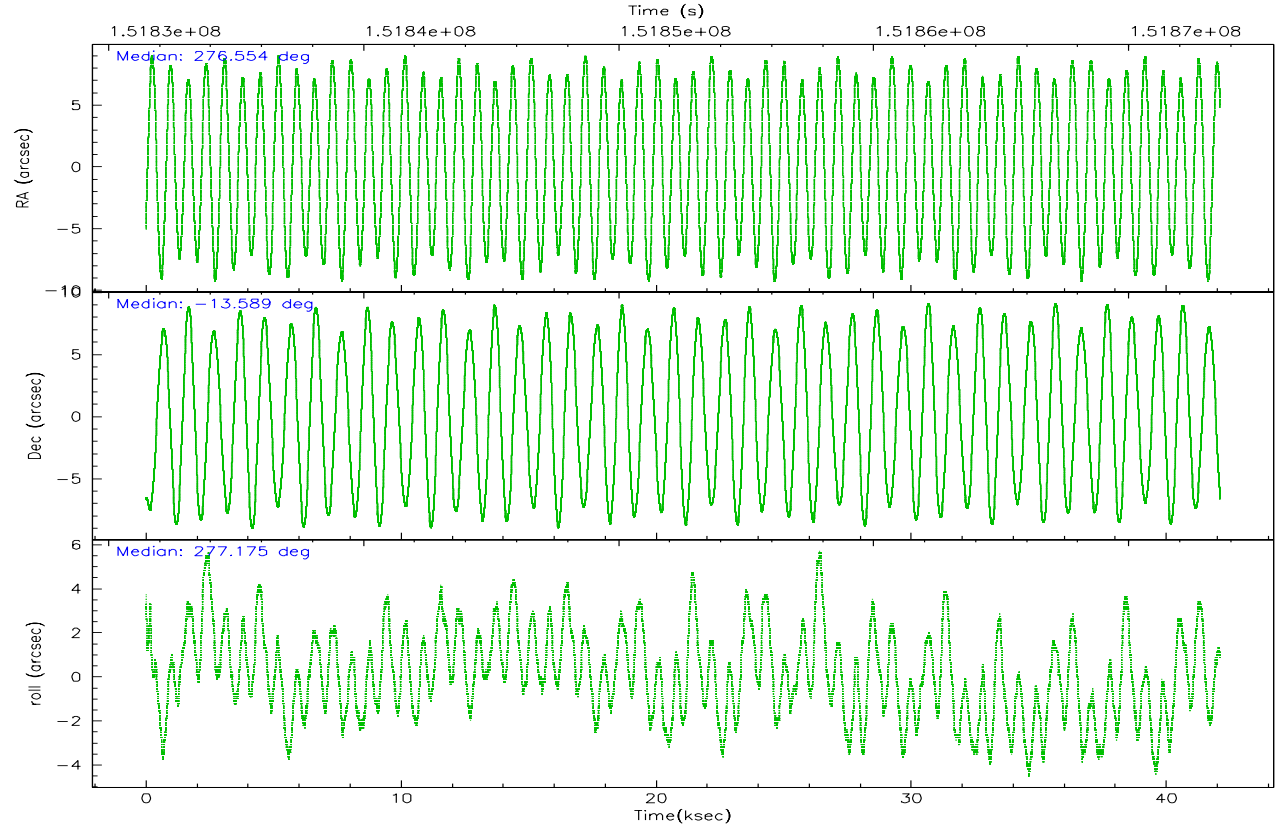
	ccd 2	ccd 3	ccd 5	ccd 6	ccd 7	ccd 8
grade 0 events	16971	16049	21031	19693	12671	25071
	6%	6%	5%	7%	3%	7%
grade 1 events	181	157	303	145	207	214
	0%	0%	0%	0%	0%	0%
grade 2 events	6407	5881	61298	7290	39596	14133
	2%	2%	14%	2%	10%	4%
grade 3 events	3013	2990	5056	3256	9242	7050
	1%	1%	1%	1%	2%	2%
grade 4 events	2981	3083	4746	3196	9310	6590
	1%	1%	1%	1%	2%	2%
grade 5 events	9697	10544	18168	11149	22843	14659
	3%	4%	4%	4%	6%	4%
grade 6 events	4937	5173	105138	6188	93324	16647
	1%	2%	25%	2%	24%	5%
grade 7 events	216654	205864	194119	219371	186157	237068
	83%	82%	47%	81%	49%	73%

2.2 Compared Parameters

Parameter	Planned	Actual	Parameter	Planned	Actual
Instrument	ACIS	ACIS	Obspar format version number	6	6
Detector	ACIS-235678	ACIS-235678	Obspar file type	PREDICTED	ACTUAL
Grating	NONE	NONE	Obspar update status	NONE	UPDATED
Data mode	FAINT	FAINT	Number of optional ACIS chips dropped	0	0
Observation mode	POINTING	POINTING	On-chip summing requested	N	N
Pointing RA	276.537136	276.5543698389696	Subarray requested	NONE	NONE
Pointing Dec	-13.567961	-13.58945044723047	Alternating exposures requested	N	N
Pointing Roll	277.020925	277.1815981592152	Primary exposure time	0.000000	3.2
SIM focus pos (mm)	-0.684267	-0.6828225247311905			
SIM defocus (mm)	0	0.001444936568705701			
SIM translation stage pos (mm)	-190.132523	-190.1400660498719			
SIM translation stage offset (mm)	0	0.00754346686406393			
Observation start time	151832186.184000	151830957.50748			
Observation start date	2002-10-24T07:35:22	2002-10-24T07:15:57			
Observation end time	151873586.184000	151874610.20929			
Observation end date	2002-10-24T19:05:22	2002-10-24T19:23:30			
Read mode	TIMED	TIMED			

2.3 Aspect



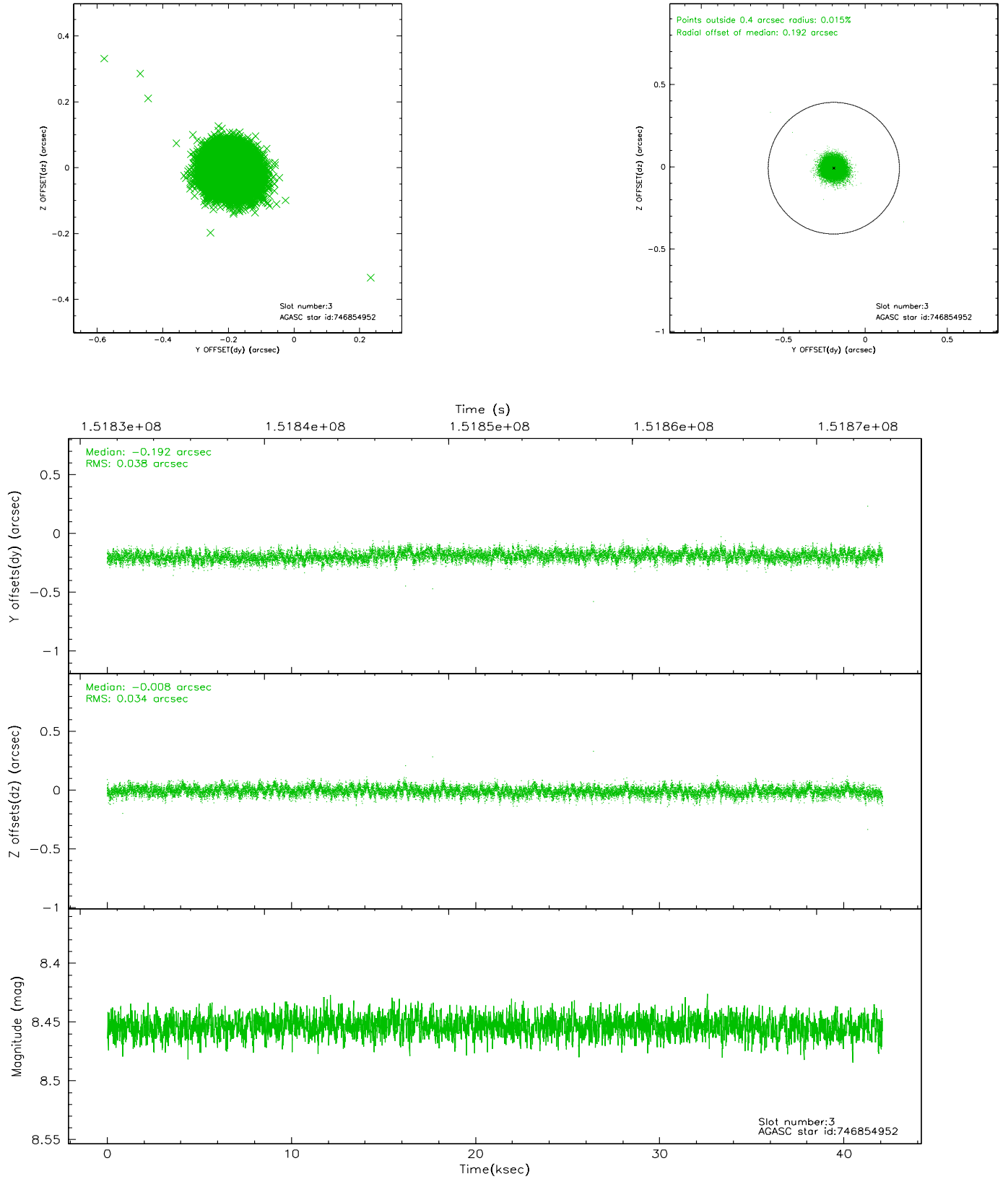


Slot Statistics

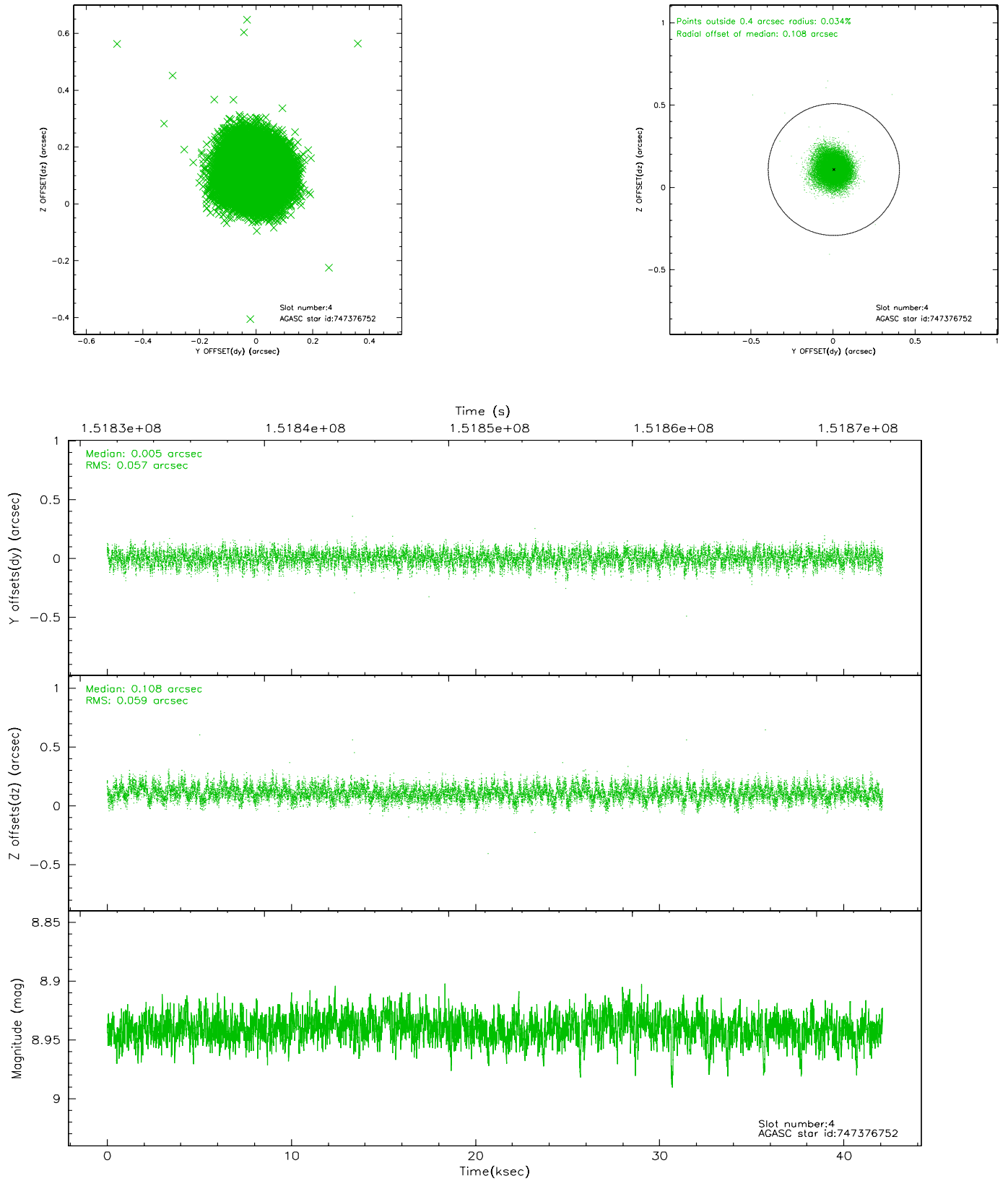
slot	status	id	mag	n_pts	med_dy	med_dz	dr1	dr2	ra	dec	mean_y	mean_z
0	FID	ACIS-S-1	7.19	10273	0.024	0.053	0.011	0.019	0.000000	0.000000	940.98	-1725.44
1	FID	ACIS-S-4	7.20	10273	-0.067	-0.043	0.012	0.019	0.000000	0.000000	2158.32	178.60
2	FID	ACIS-S-5	7.23	10273	0.017	0.004	0.013	0.023	0.000000	0.000000	-1807.87	172.29
3	GUIDE	746854952	8.45	20535	-0.192	-0.008	0.054	0.087	276.590453	-12.990635	-2039.38	440.07
4	GUIDE	747376752	8.94	20542	0.005	0.108	0.087	0.139	276.959582	-13.662621	520.64	1425.69
5	GUIDE	747385144	9.18	20537	0.043	-0.083	0.070	0.118	276.168048	-13.912906	1076.82	-1431.27
6	GUIDE	747384384	9.60	20534	-0.066	-0.152	0.128	0.214	275.955964	-13.523194	-405.24	-1999.21
7	GUIDE	747388608	9.87	20527	0.214	0.132	0.130	0.208	277.121188	-14.160913	2371.12	1763.24

2.4 Star Slots

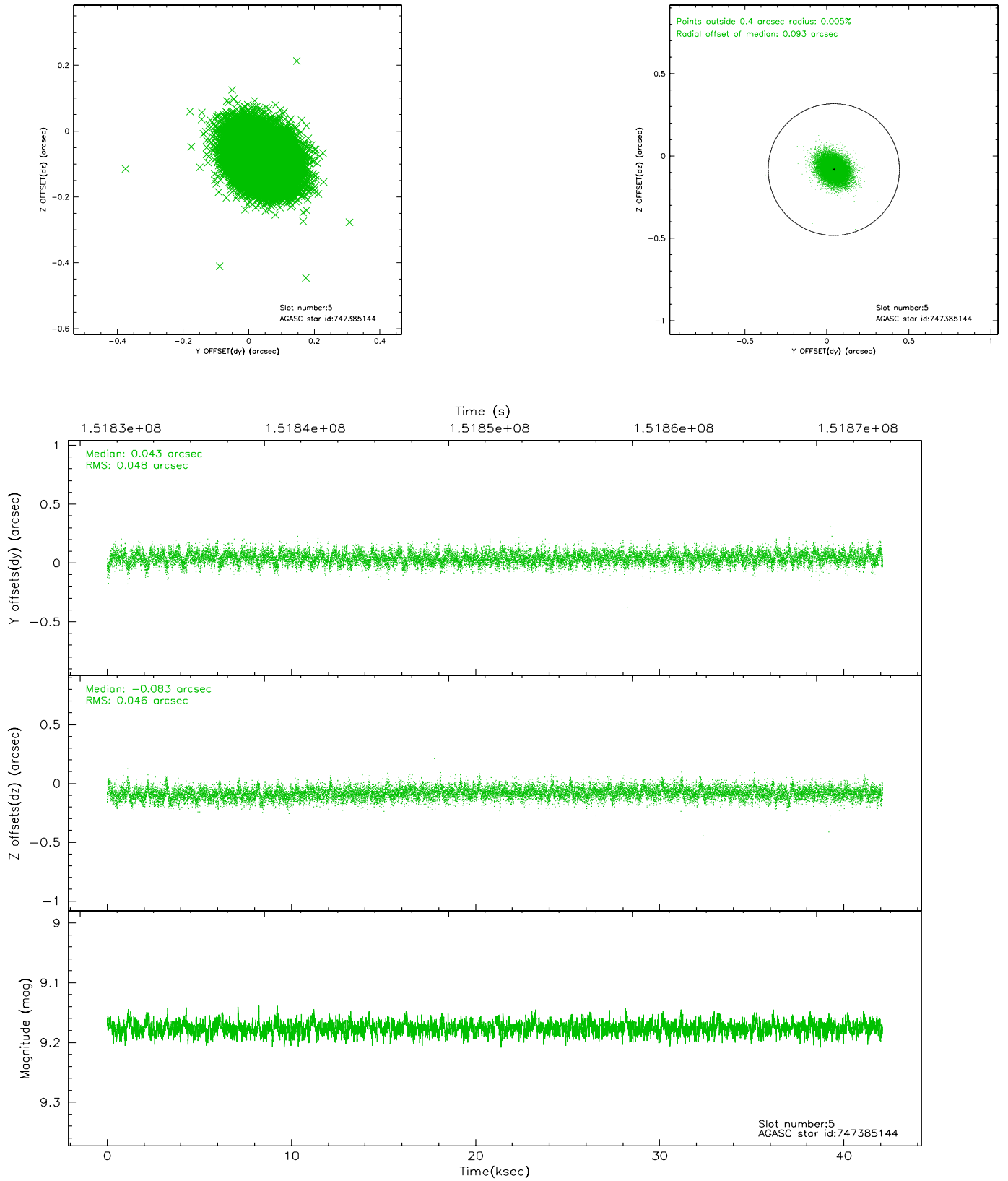
2.4.1 Slot 3



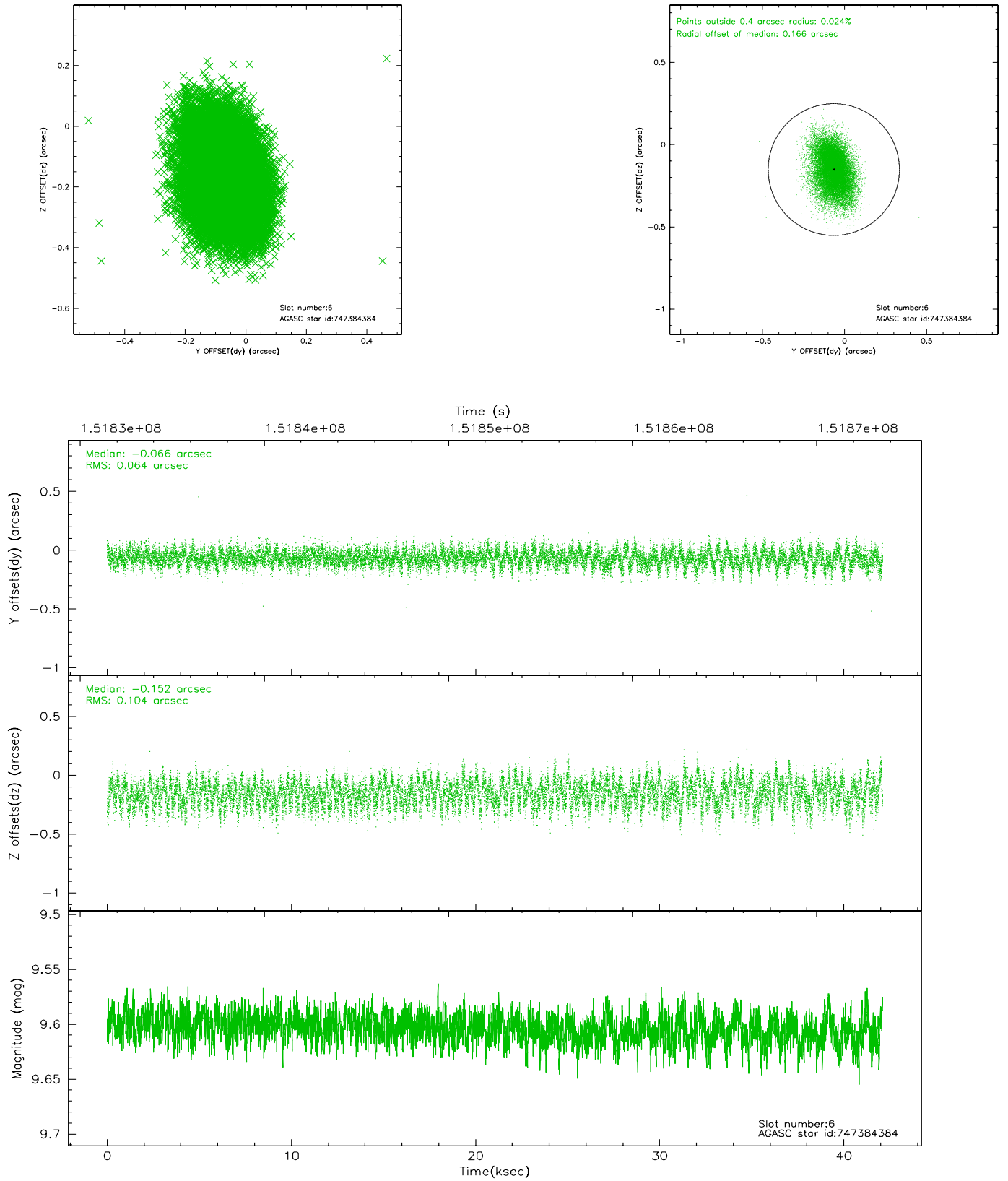
2.4.2 Slot 4



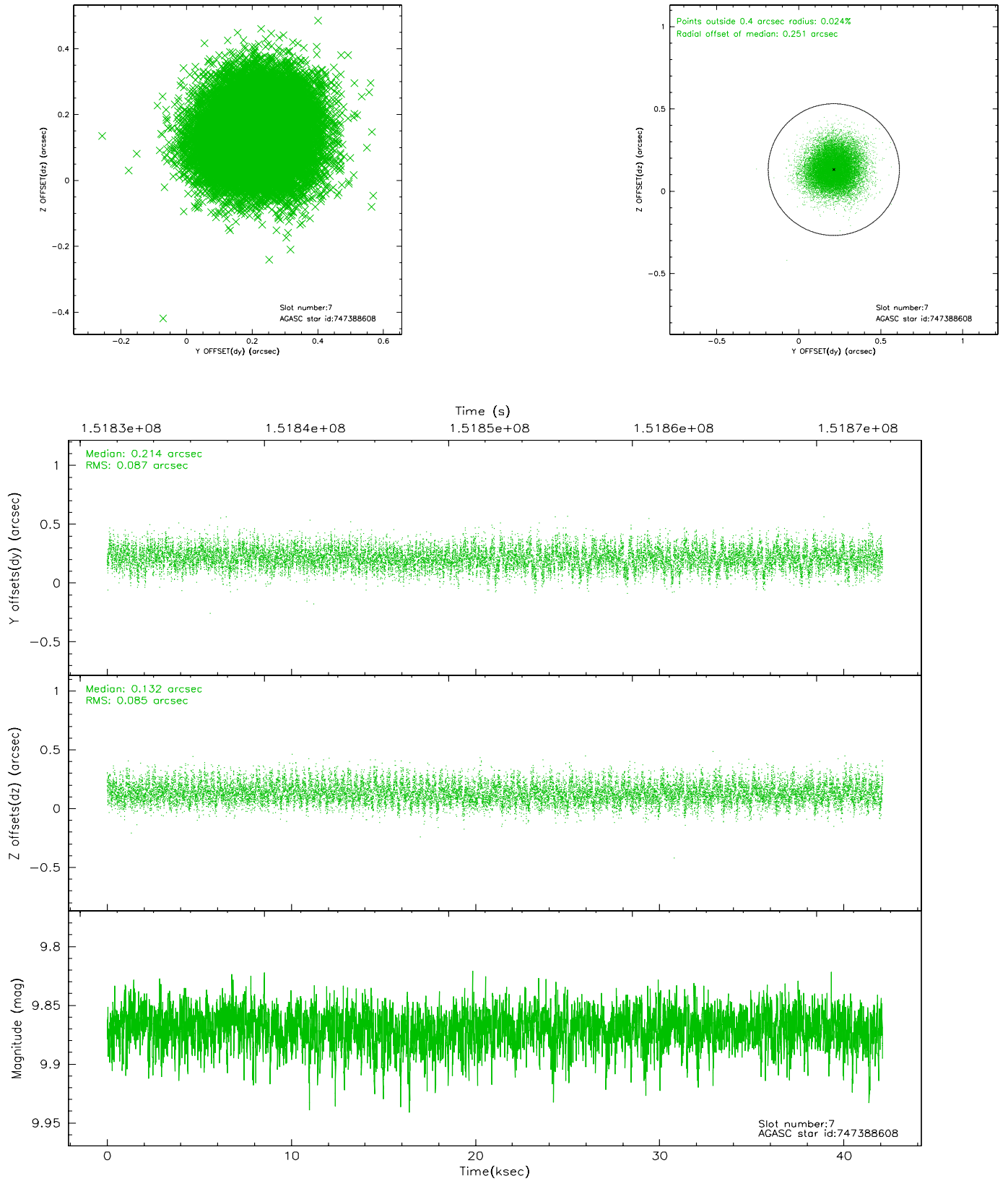
2.4.3 Slot 5



2.4.4 Slot 6



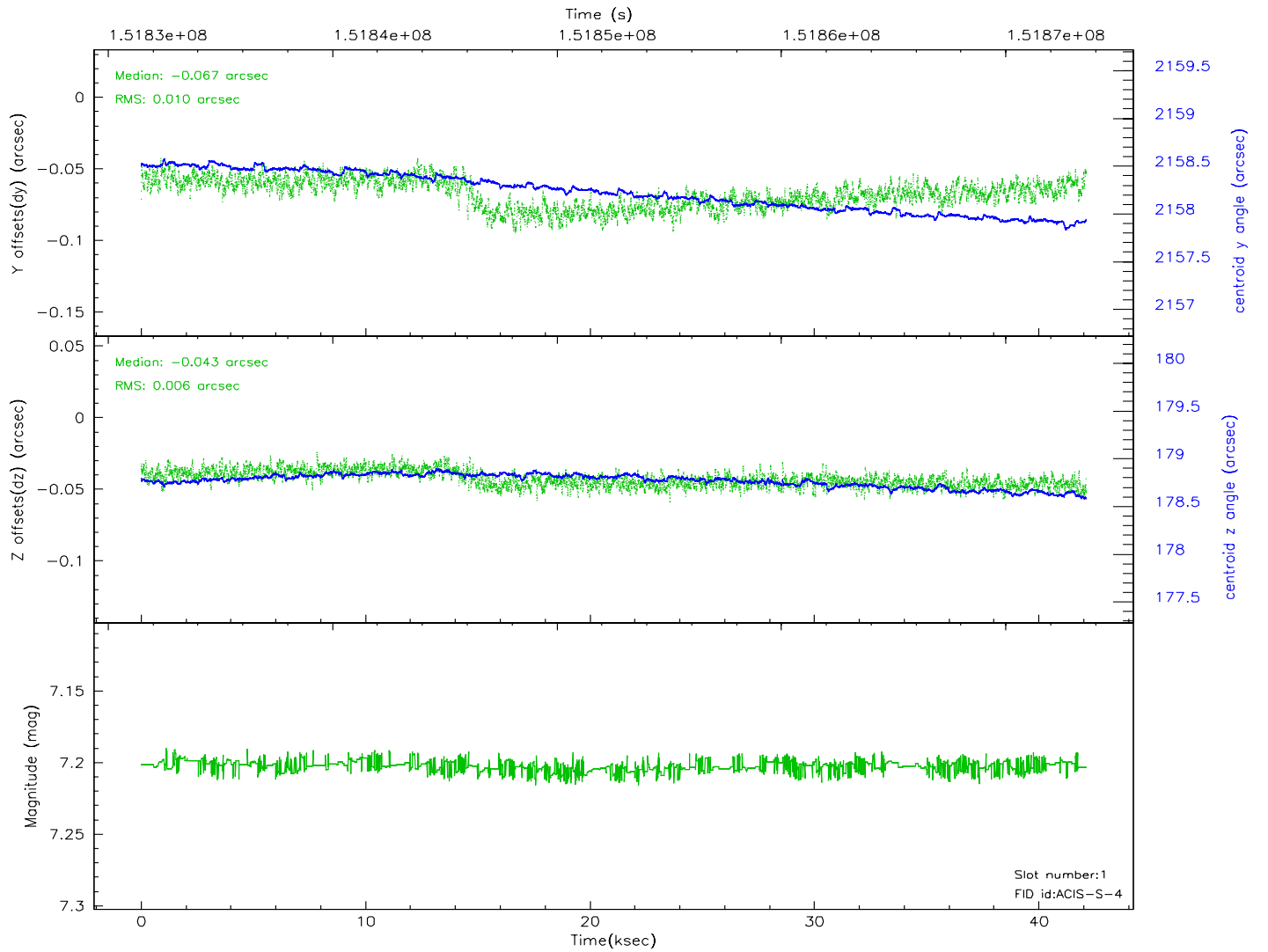
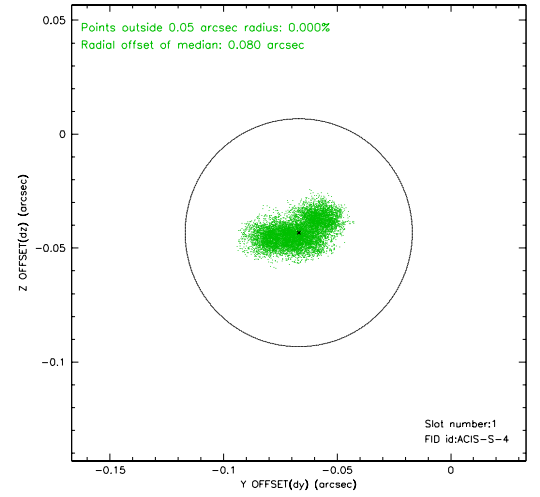
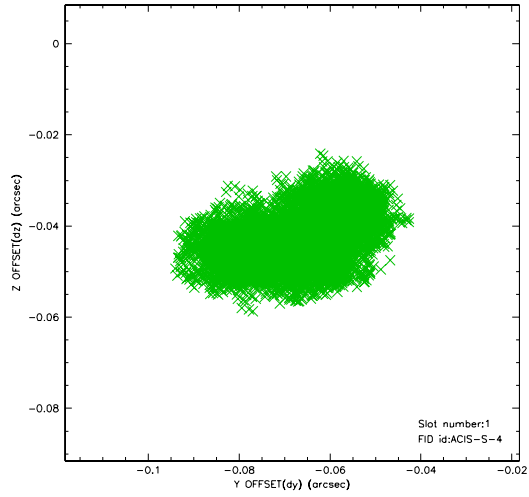
2.4.5 Slot 7



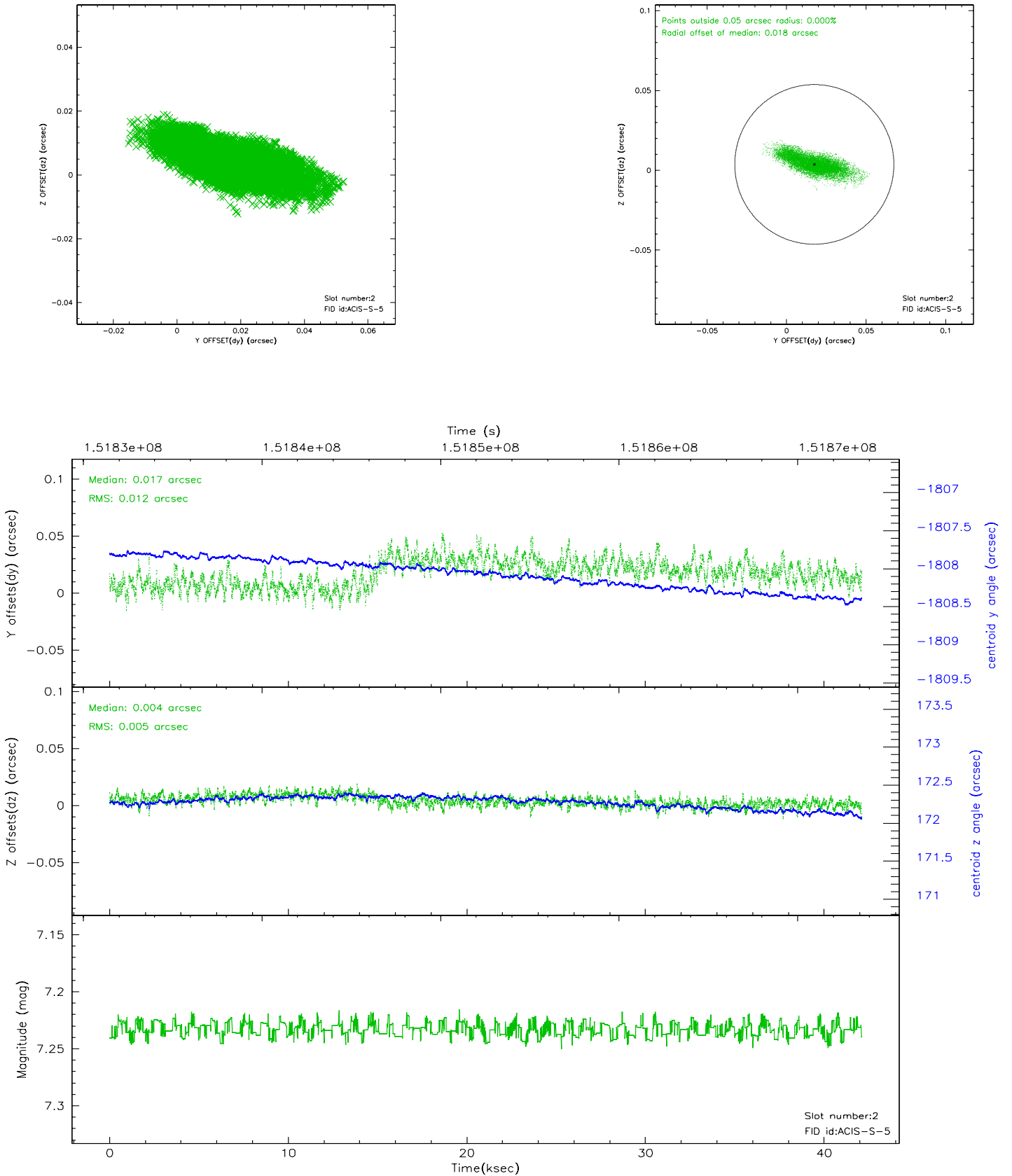
2.5.1 Slot 0



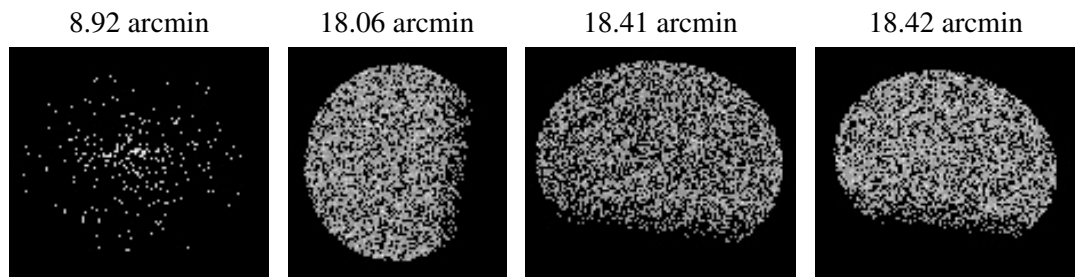
2.5.2 Slot 1



2.5.3 Slot 2



3 Point Sources



A Summary

A.1 Status

V&V Scientist	Beth Sundheim
V&V Date (YYYY-MM-DD)	2006.10.11
V&V Edition	1
V&V Disposition and Status	OK
V&V Charge Time	41.363

A.2 Comments