

V&V Reference Report

L2 ASCDS Version : 8.4.5

Observation 2819 - L2 Version 4
Chandra X-Ray Center

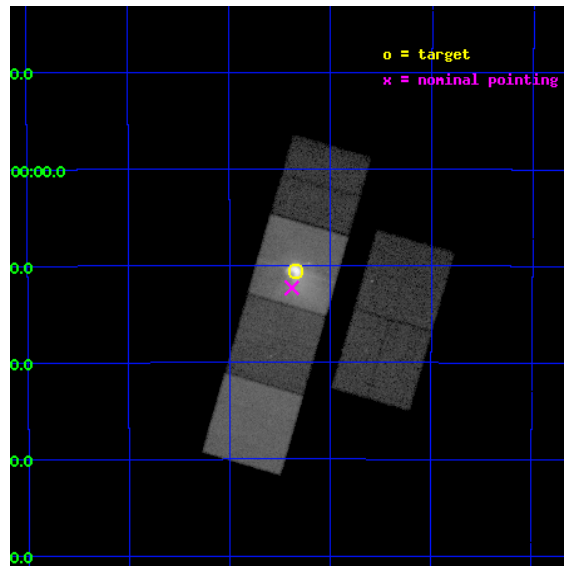
L2 Processing Date : Oct 4 2012

Contents

1	Front	2
2	OBI	3
2.1	OBI	3
2.1.1	Images	3
2.1.2	Bias	3
2.1.3	Parameters	4
2.1.4	Events	4
2.2	Compared Parameters	5
2.3	Aspect	6
2.4	Star Slots	9
2.4.1	Slot 3	9
2.4.2	Slot 4	10
2.4.3	Slot 5	11
2.4.4	Slot 6	12
2.4.5	Slot 7	13
2.5	FID Slots	14
2.5.1	Slot 0	14
2.5.2	Slot 1	15
2.5.3	Slot 2	16
A	Summary	17
A.1	Status	17
A.2	Comments	17

1 Front

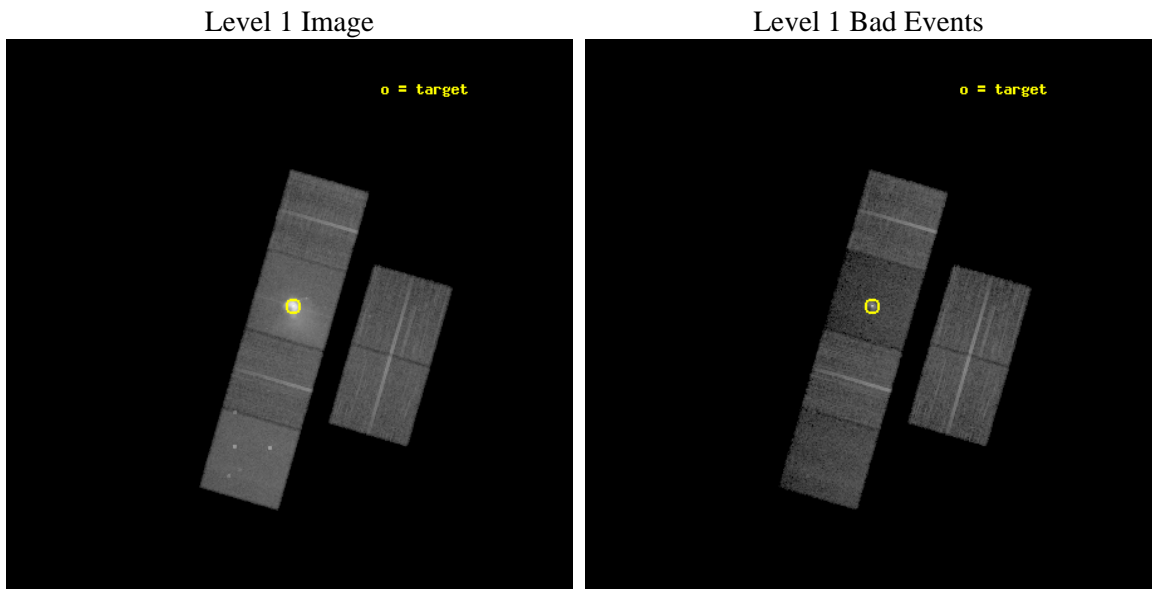
seq_num	500269	Sequence number
obs_id	2819	Observation id
title	THE DYNAMICAL PULSAR-WIND NEBULA IN THE VELA SNR	Proposal title
observer	Dr. George Pavlov	Principal investigator
object	VELA PWN	Source name
dtcycle	0	
cycle	P	events from which exps? Prim/Second/Both
ra_targ	128.83625	Observer's specified target RA [deg]
dec_targ	-45.176667	Observer's specified target Dec [deg]
ra_nom	128.84530178816	Nominal RA [deg]
dec_nom	-45.205060997925	Nominal Dec [deg]
roll_nom	286.14154111805	Nominal Roll [deg]
revision	4	Processing version of data
ontime	20179.199924827	Sum of GTIs [s]
livetime	19923.678744923	Livetime [s]
ontime2	20179.199924827	Sum of GTIs [s]
ontime3	20179.199924827	Sum of GTIs [s]
ontime5	20179.199924827	Sum of GTIs [s]
ontime6	20179.199924827	Sum of GTIs [s]
ontime7	20179.199924827	Sum of GTIs [s]
ontime8	20175.958964556	Sum of GTIs [s]
l2events	583590	Number of level 2 events



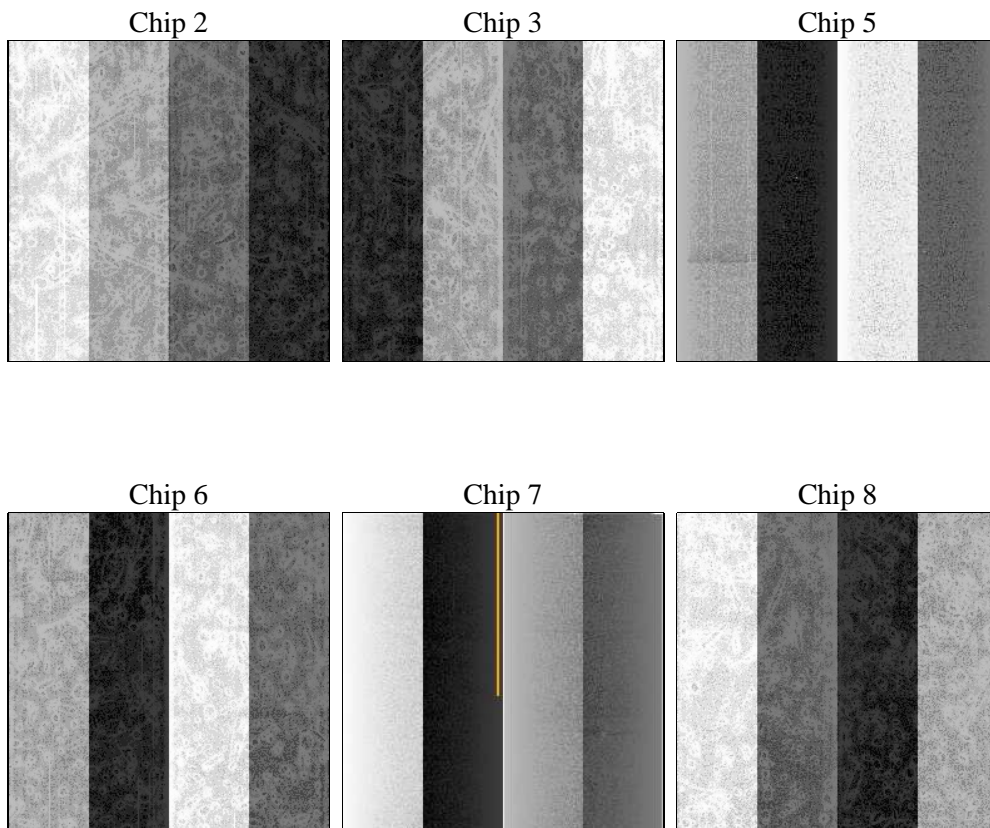
2 OBI

2.1 OBI

2.1.1 Images



2.1.2 Bias



2.1.3 Parameters

obi_num	1	Obi number	sched_exp_time	20000.000000	[s] Scheduled observation exposure time
ascdsver	8.4.5	Processing system revision	ontime	20179.199924827	Sum of GTIs [s]
caldsver	4.5.2	 	ontime2	20179.199924827	Sum of GTIs [s]
date	2012-10-04T17:06:57	Date and time of file creation	ontime3	20179.199924827	Sum of GTIs [s]
revision	4	Processing version of data	ontime5	20179.199924827	Sum of GTIs [s]
			ontime6	20179.199924827	Sum of GTIs [s]
			ontime7	20179.199924827	Sum of GTIs [s]
			ontime8	20175.958964556	Sum of GTIs [s]
			l1events	1124489	Number of level 1 events

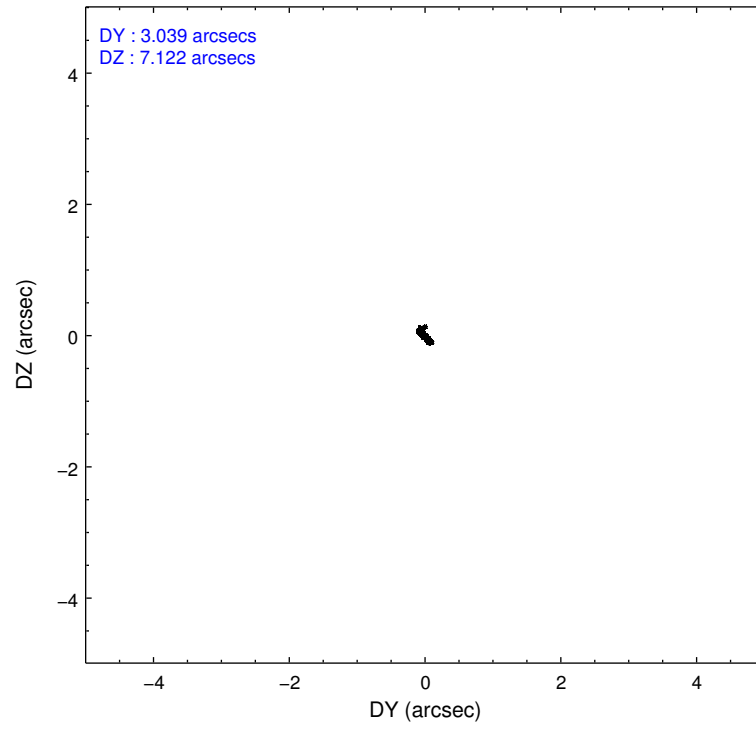
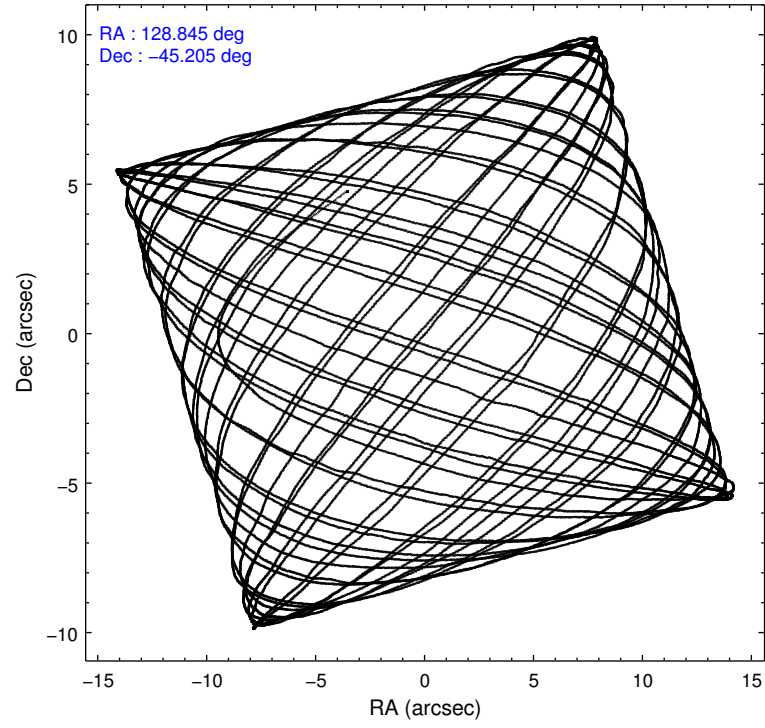
2.1.4 Events

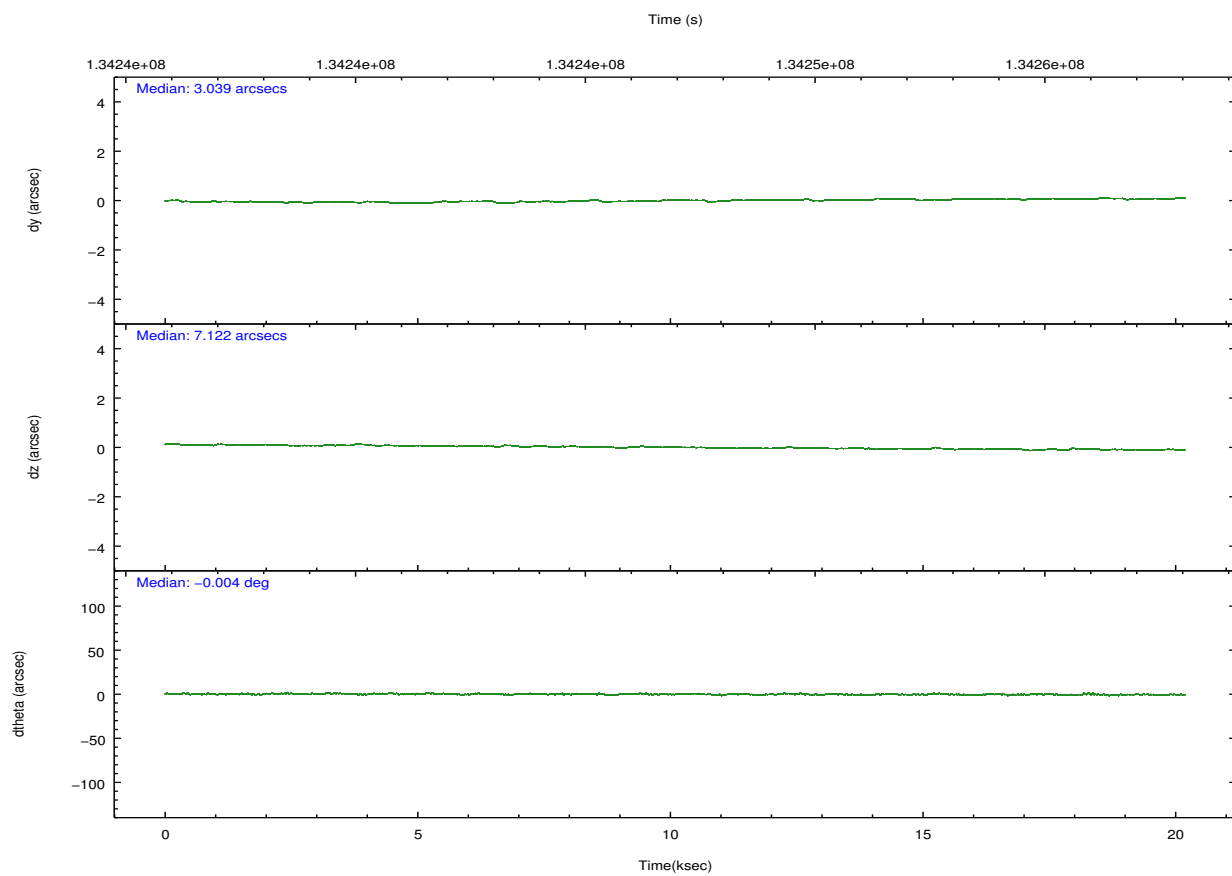
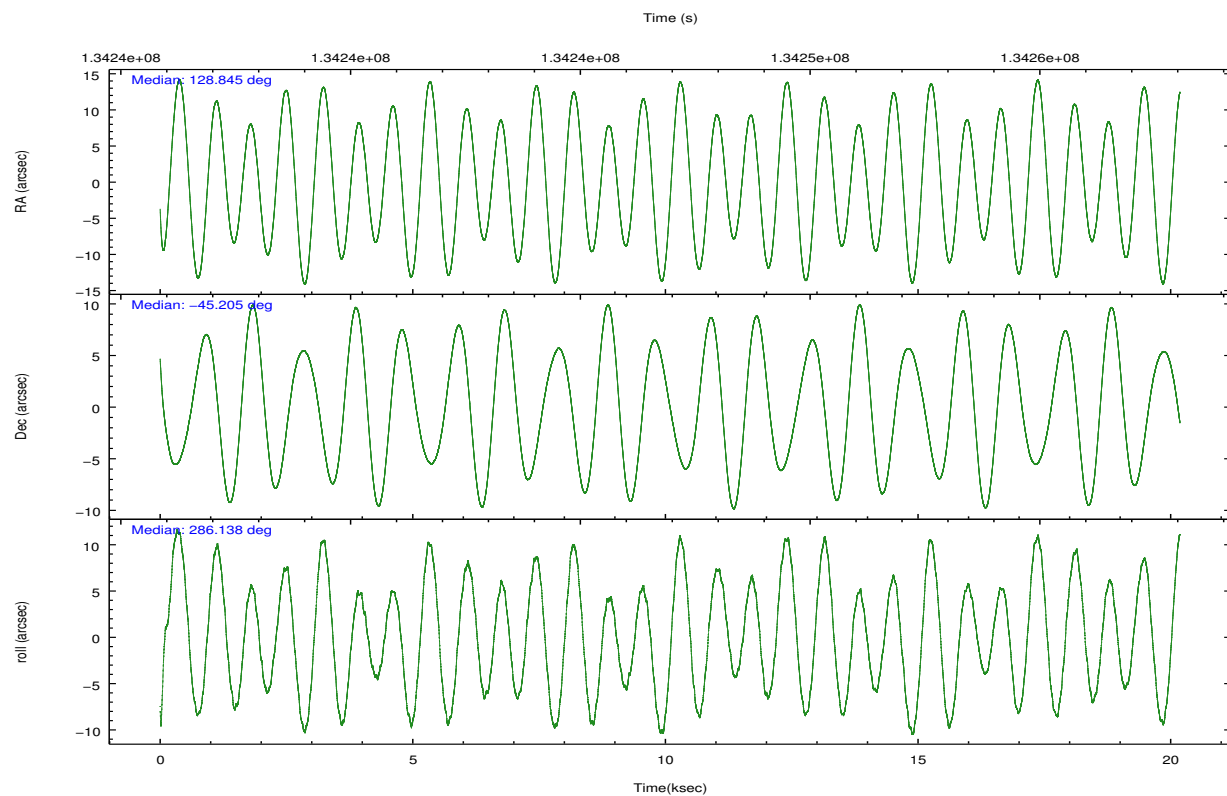
	ccd 2	ccd 3	ccd 5	ccd 6	ccd 7	ccd 8		ccd 2	ccd 3	ccd 5	ccd 6	ccd 7	ccd 8
level 1 events	130116	118659	170119	141213	421769	142613	grade 0 events	22583	16496	33272	36927	112863	22237
rejected events	98490	94470	56607	92817	58405	98369		17%	13%	19%	26%	26%	15%
rejected %	75%	79%	33%	65%	13%	68%	grade 1 events	121	92	182	162	747	126
								0%	0%	0%	0%	0%	0%
							grade 2 events	4106	3077	30301	5191	90841	7261
								3%	2%	17%	3%	21%	5%
							grade 3 events	1504	1325	7111	1949	40144	3594
								1%	1%	4%	1%	9%	2%
							grade 4 events	1522	1396	7088	1971	39786	3344
								1%	1%	4%	1%	9%	2%
							grade 5 events	2662	3083	10541	3374	13032	4895
								2%	2%	6%	2%	3%	3%
							grade 6 events	2048	2003	36221	2563	81291	8010
								1%	1%	21%	1%	19%	5%
							grade 7 events	95570	91187	45403	89076	43065	93146
								73%	76%	26%	63%	10%	65%

2.2 Compared Parameters

Parameter	Planned	Actual	Parameter	Planned	Actual
Instrument	ACIS	ACIS	Obspar format version number	7	7
Detector	ACIS-235678	ACIS-235678	Obspar file type	PREDICTED	ACTUAL
Grating	NONE	NONE	Obspar update status	NONE	UPDATED
Data mode	FAINT	FAINT	Number of optional ACIS chips dropped	0	0
Observation mode	POINTING	POINTING	On-chip summing requested	N	N
[deg] Pointing RA	128.817097	128.8453017881561	Subarray requested	NONE	NONE
[deg] Pointing Dec	-45.186432	-45.20506099792516	Alternating exposures requested	N	N
[deg] Pointing Roll	285.964911	286.1415411180519	[s] Primary exposure time	0.000000	3.2
[mm] SIM focus pos	-0.684267	-0.6828225247311905			
[mm] SIM defocus	0	0.001444936568705701			
[mm] SIM translation stage pos	-190.132523	-190.1400660498719			
[mm] SIM translation stage offset	0	0.00754346686406393			
[s] Observation start time (MET)	134237047.184000	134235934.91006			
Observation start date	2002-04-03T16:03:03	2002-04-03T15:45:34			
[s] Observation end time (MET)	134257047.184000	134258759.09849			
Observation end date	2002-04-03T21:36:23	2002-04-03T22:05:59			
Read mode	TIMED	TIMED			

2.3 Aspect



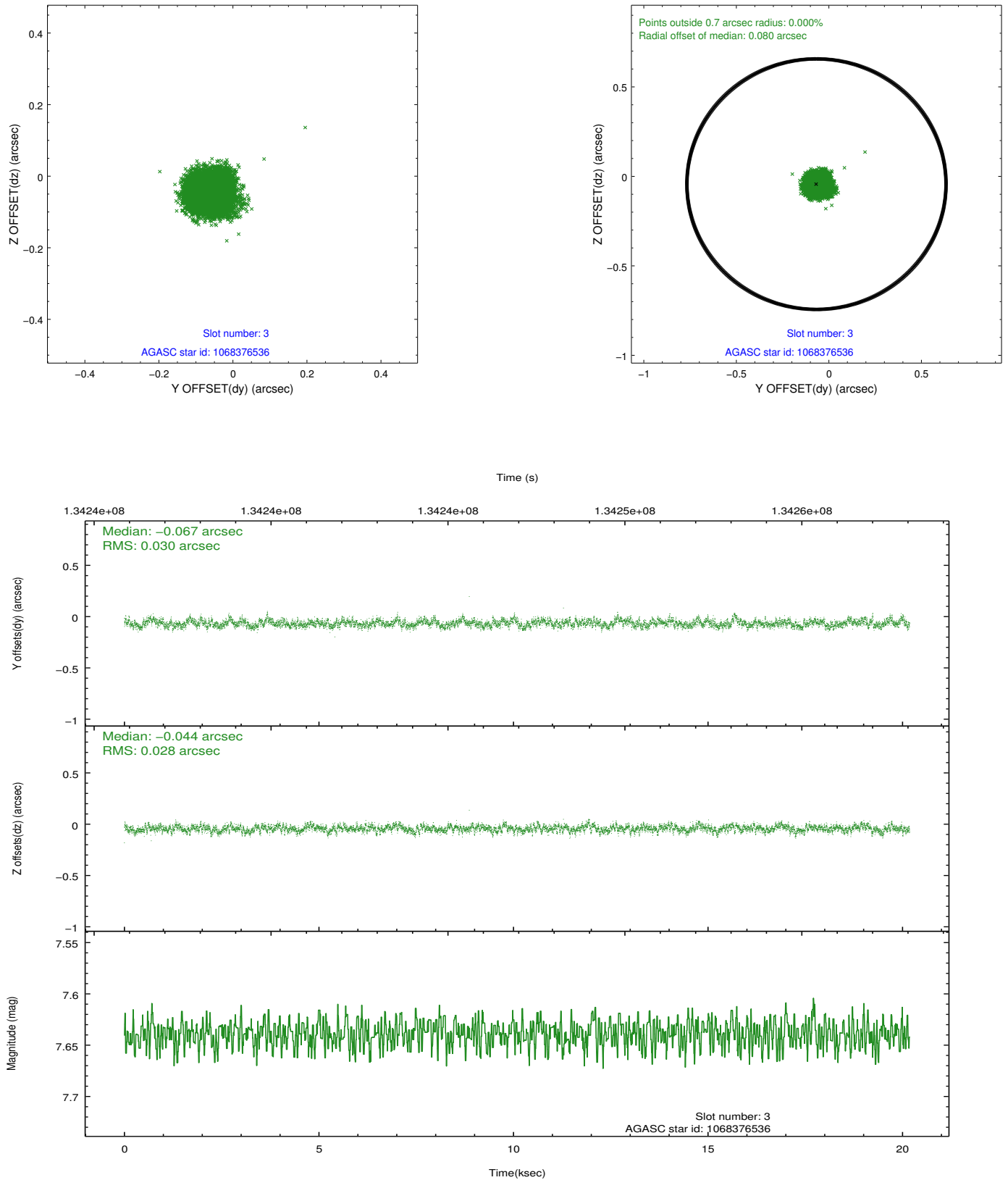


Slot Statistics

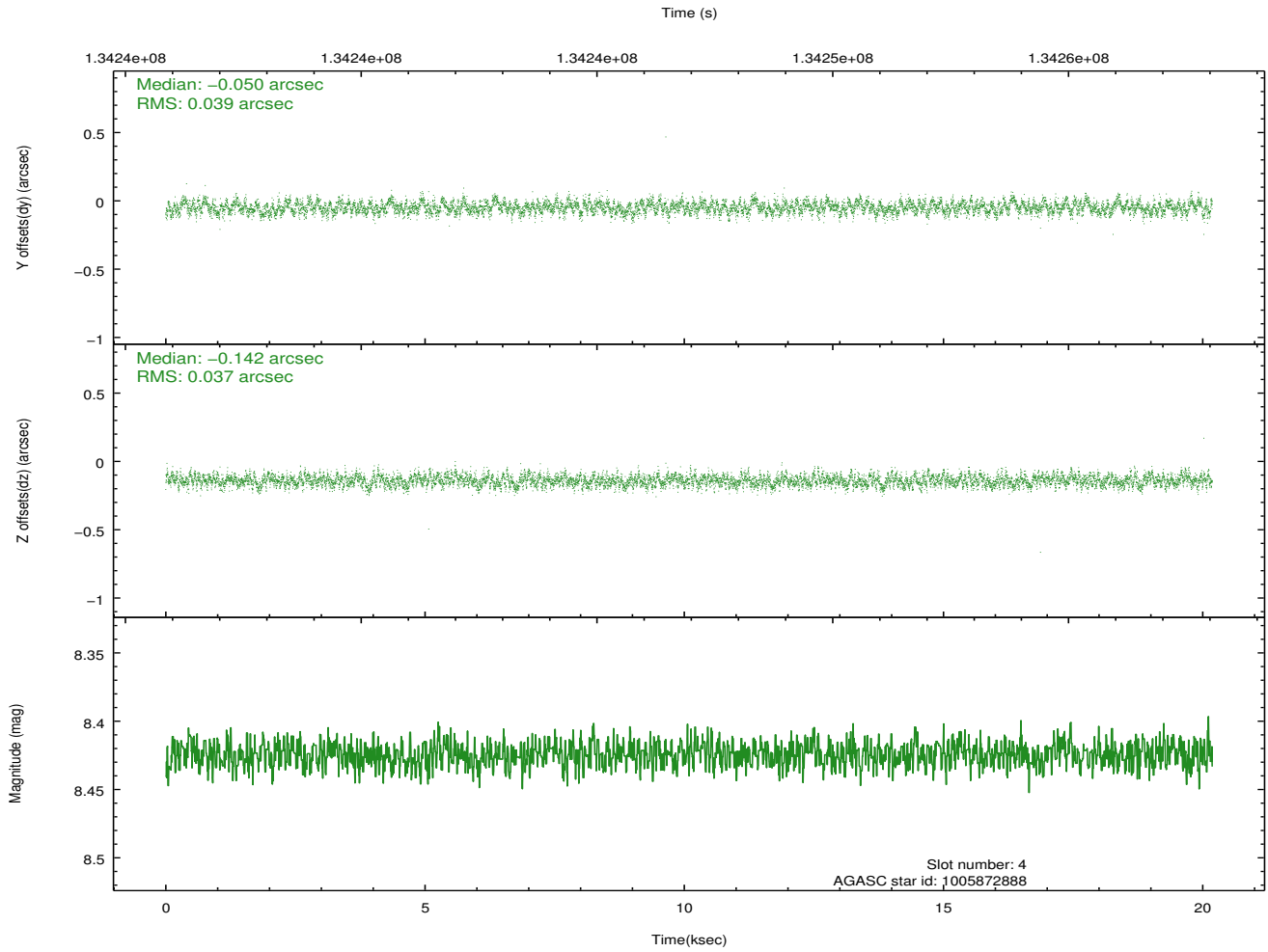
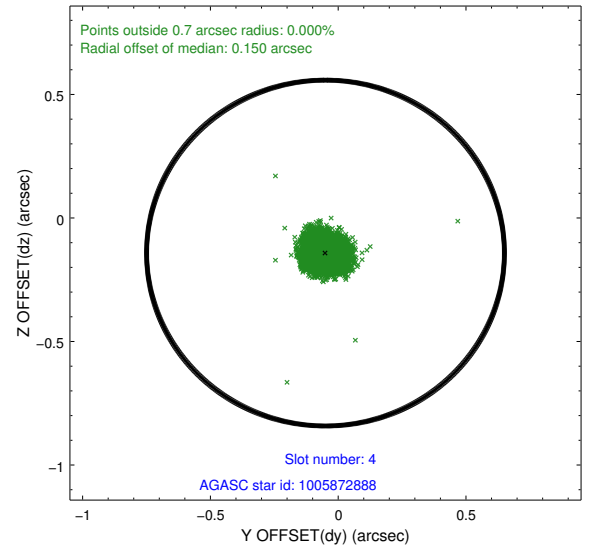
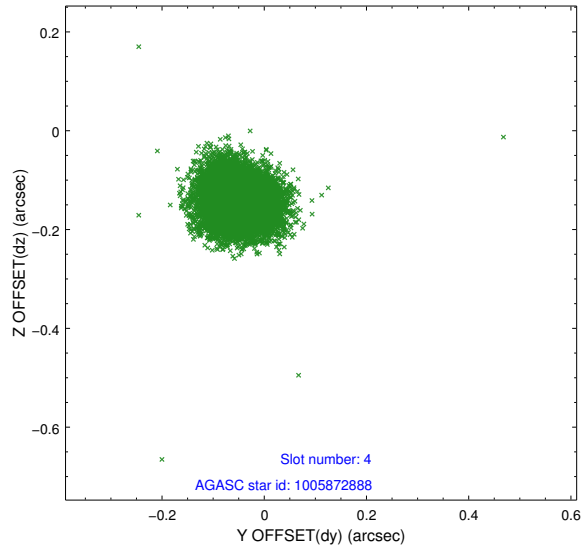
slot	status	id	mag	n_pts	med_dy	med_dz	dr1	dr2	ra	dec	mean_y	mean_z
0	FID	ACIS-S-2	7.11	4922	-0.011	0.012	0.012	0.019	0.000000	0.000000	-755.68	-1728.28
1	FID	ACIS-S-4	7.20	4921	-0.031	0.002	0.008	0.014	0.000000	0.000000	2157.48	180.01
2	FID	ACIS-S-5	7.24	4922	0.011	-0.006	0.009	0.015	0.000000	0.000000	-1808.27	173.87
3	GUIDE	1068376536	7.64	9844	-0.067	-0.044	0.043	0.071	129.556408	-45.593502	1929.92	1385.00
4	GUIDE	1005872888	8.42	9845	-0.050	-0.142	0.057	0.090	128.718363	-44.887099	-1104.29	53.95
5	GUIDE	1068239704	8.57	9845	-0.014	0.039	0.067	0.107	129.331182	-45.207211	435.07	1231.75
6	GUIDE	1068270344	8.54	9844	0.108	-0.025	0.081	0.133	128.097487	-45.785157	1584.20	-2332.04
7	GUIDE	1005862984	8.78	9842	0.023	0.172	0.061	0.099	128.482680	-44.577316	-2341.51	-222.29

2.4 Star Slots

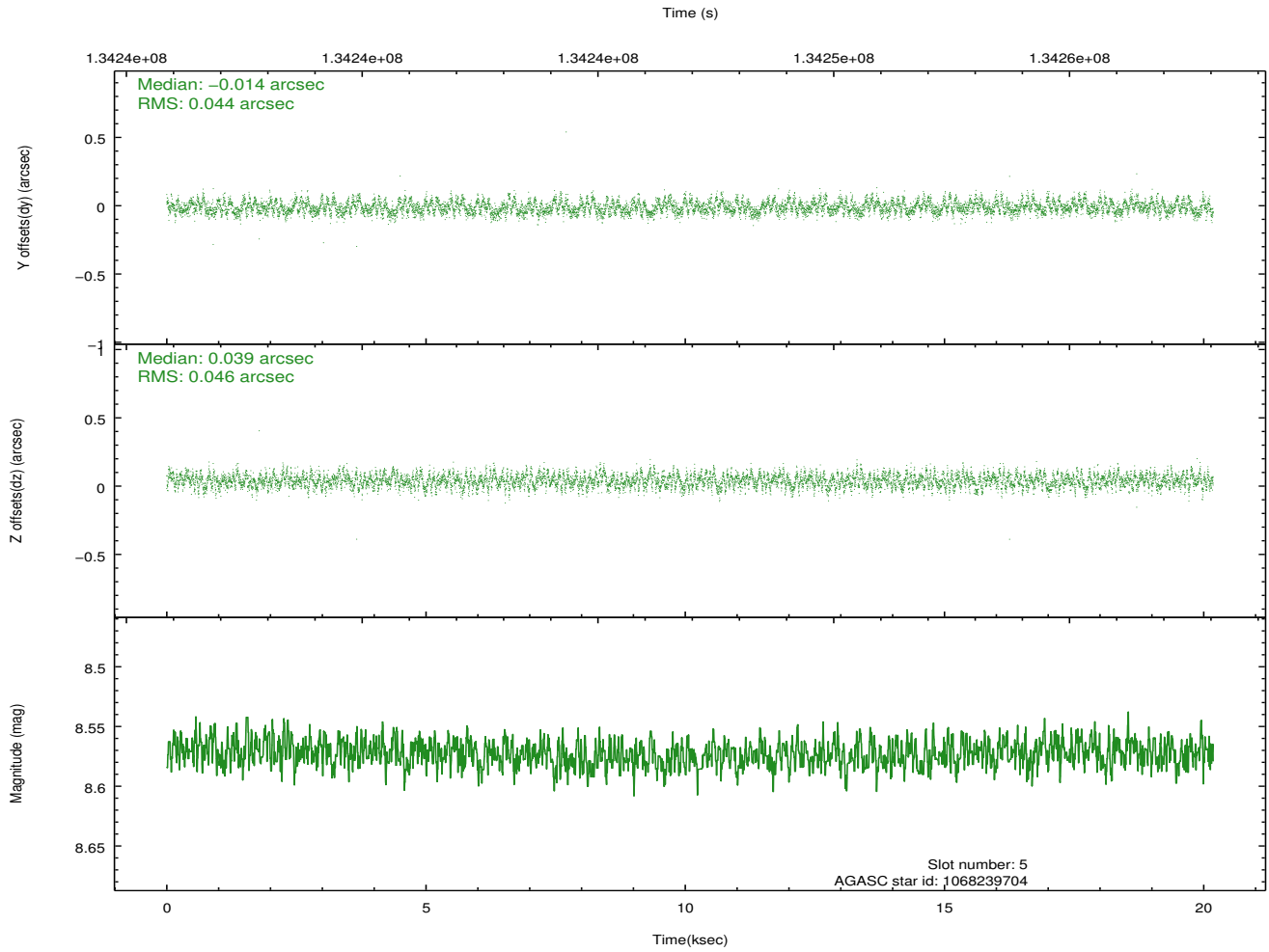
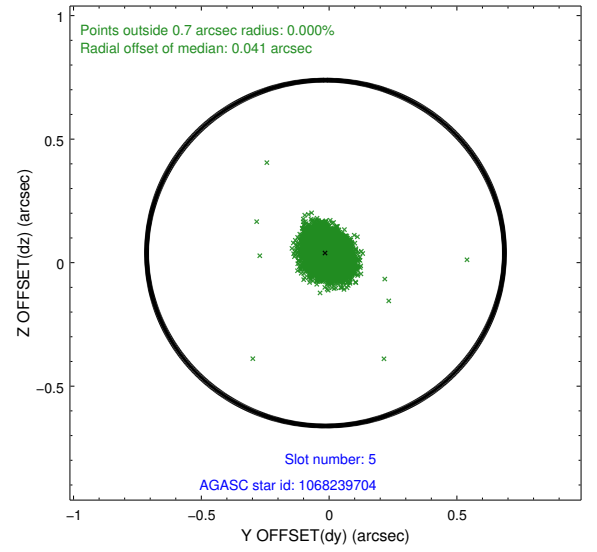
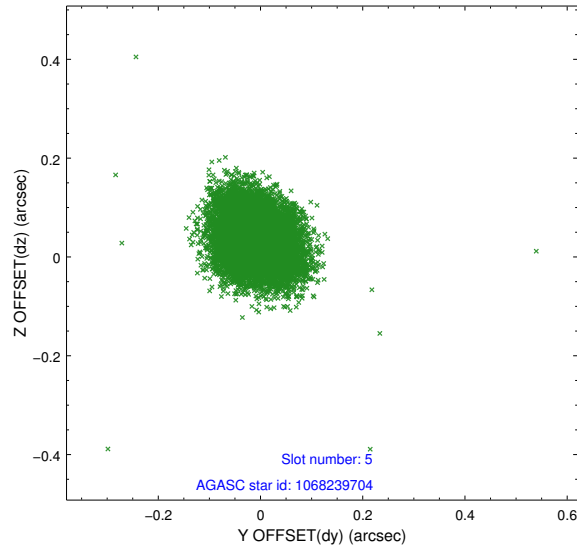
2.4.1 Slot 3



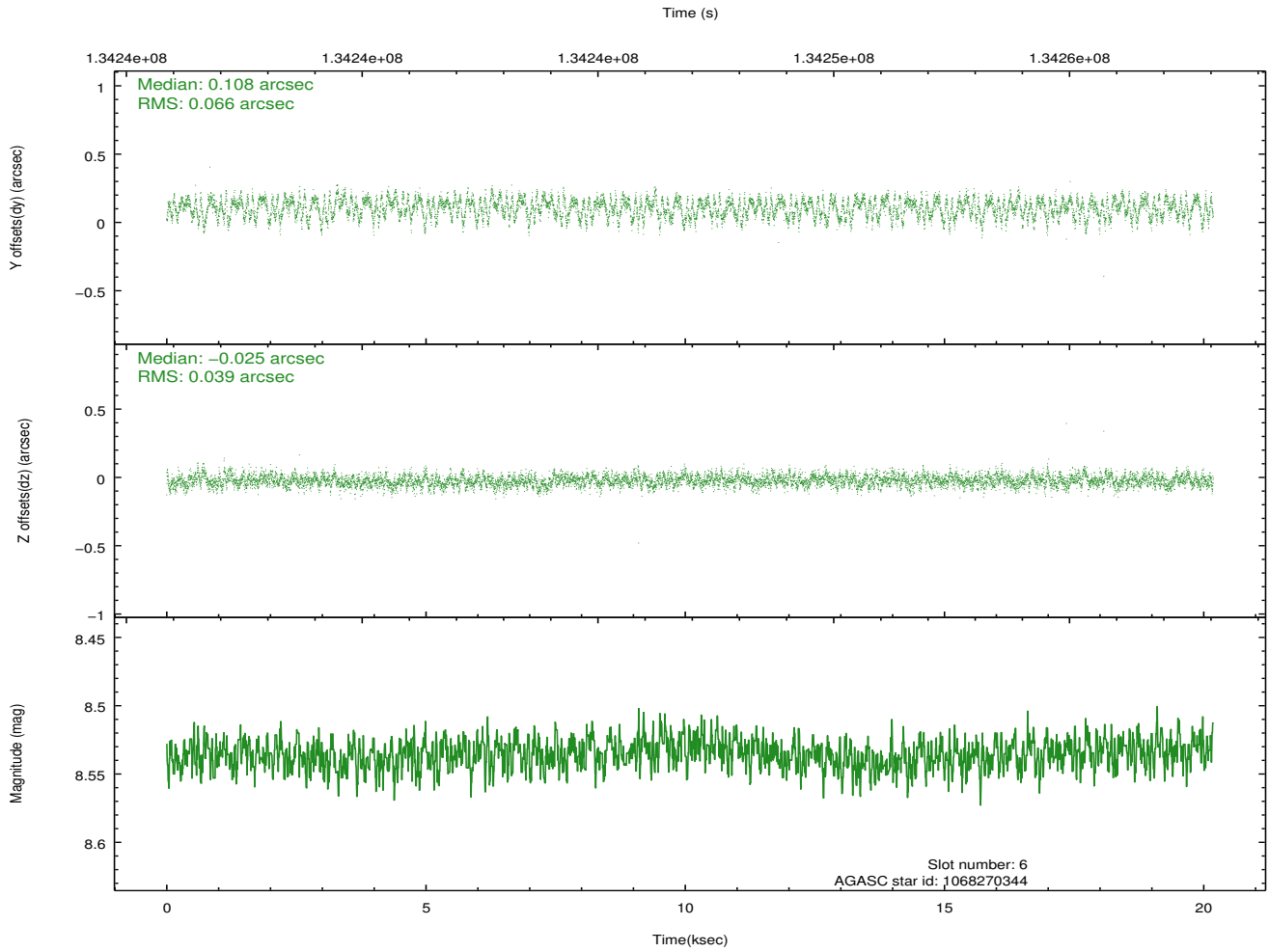
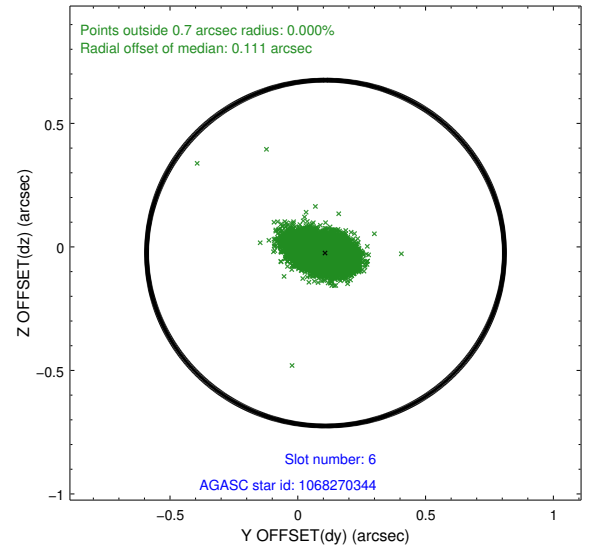
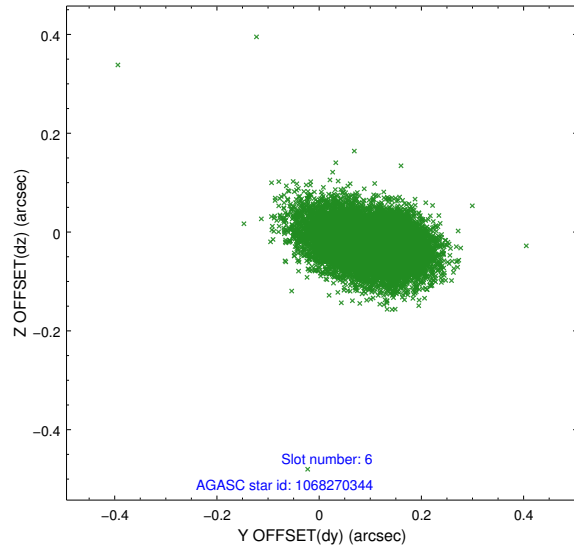
2.4.2 Slot 4



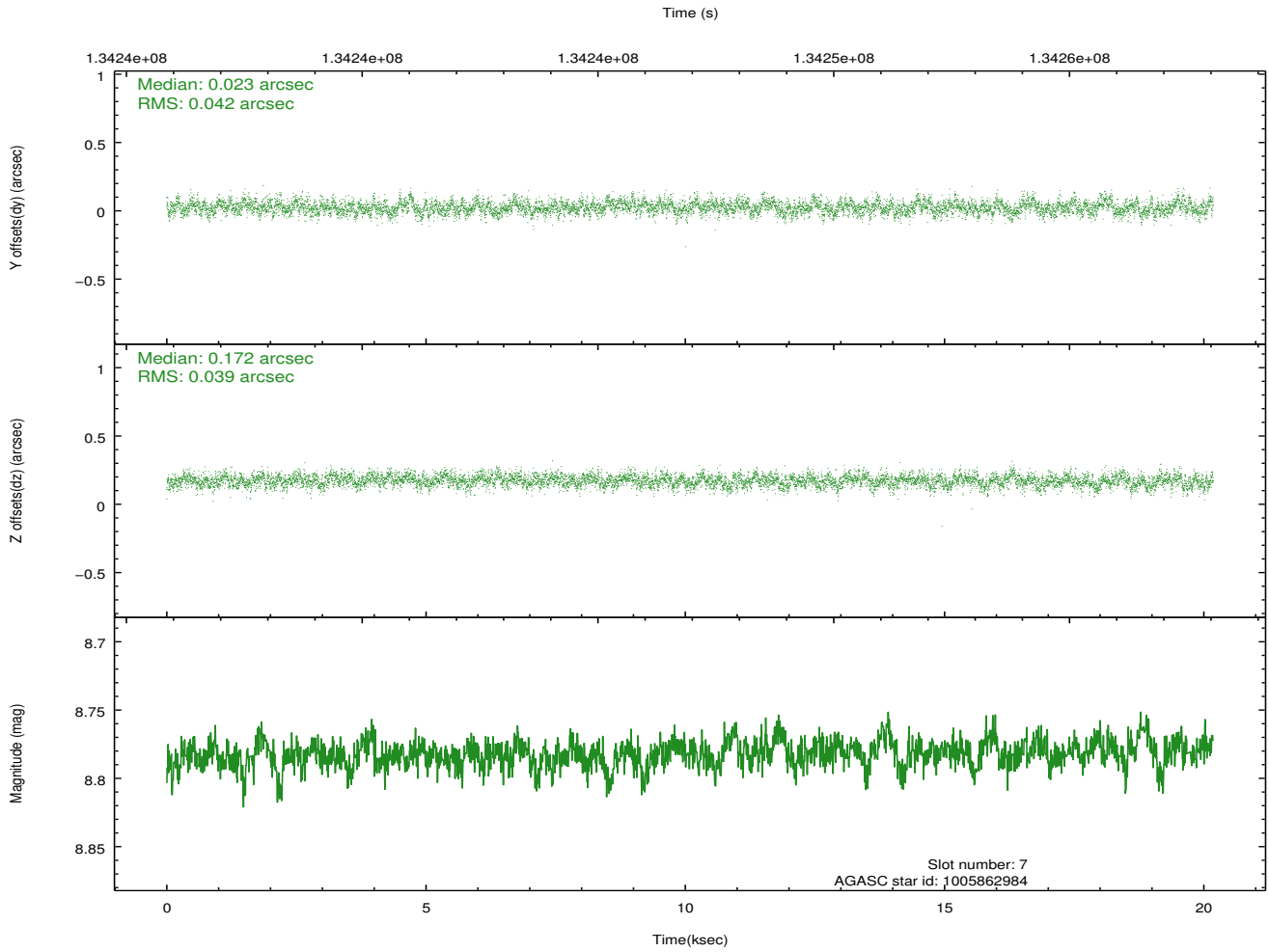
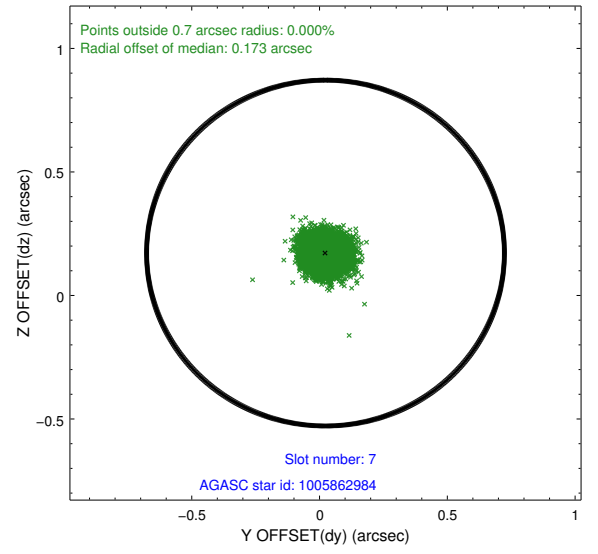
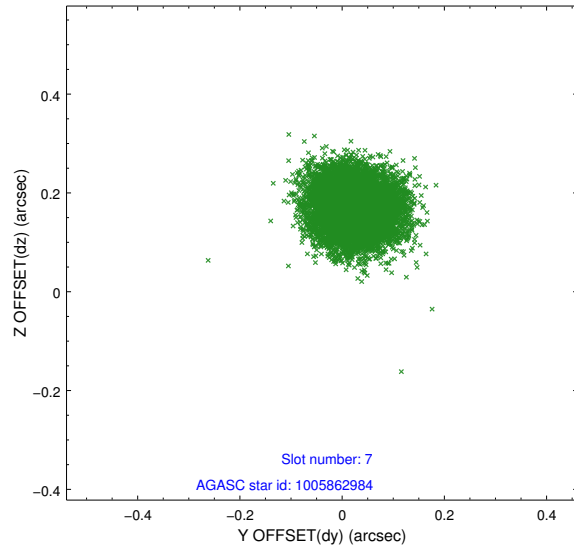
2.4.3 Slot 5



2.4.4 Slot 6

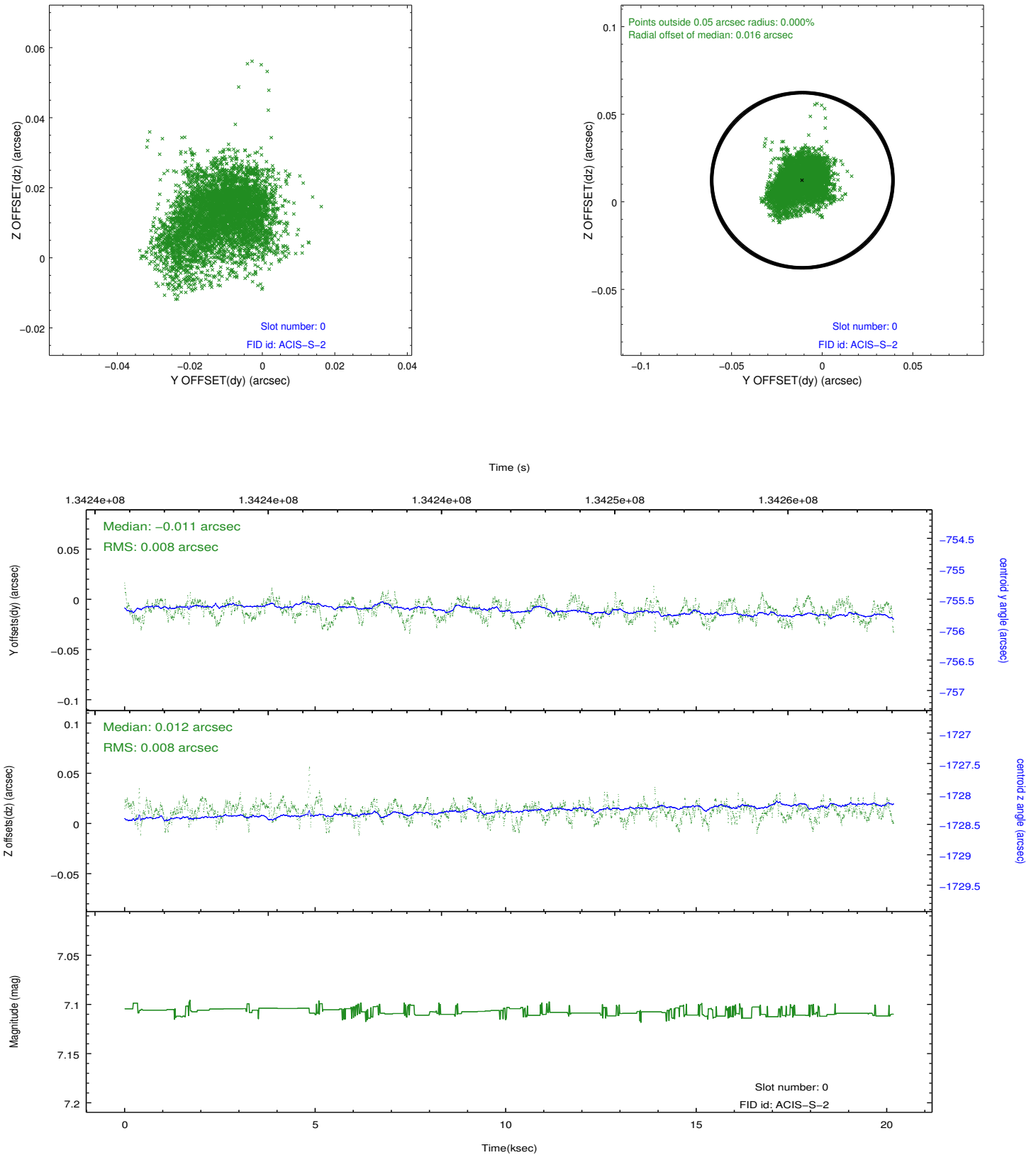


2.4.5 Slot 7

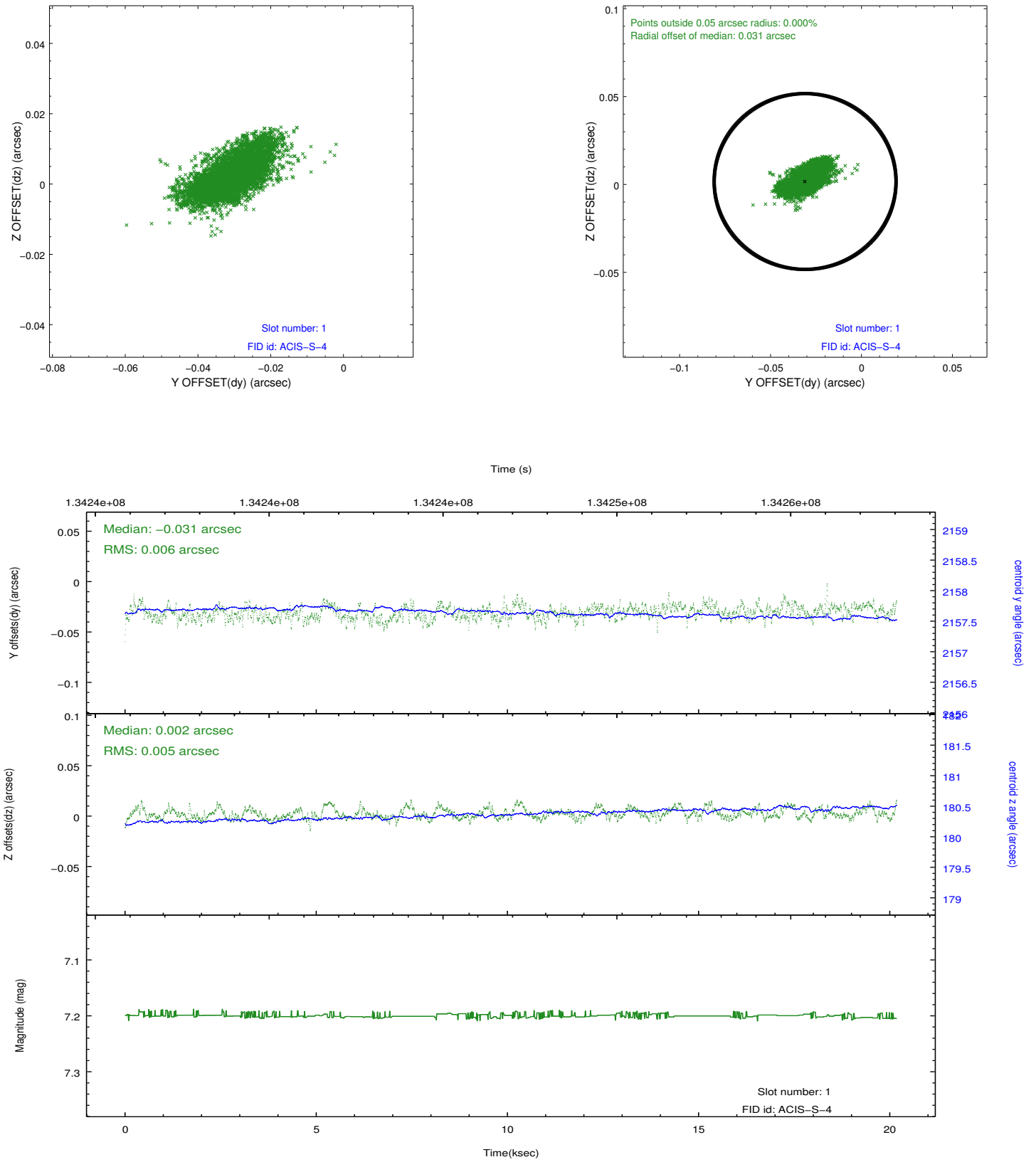


2.5 FID Slots

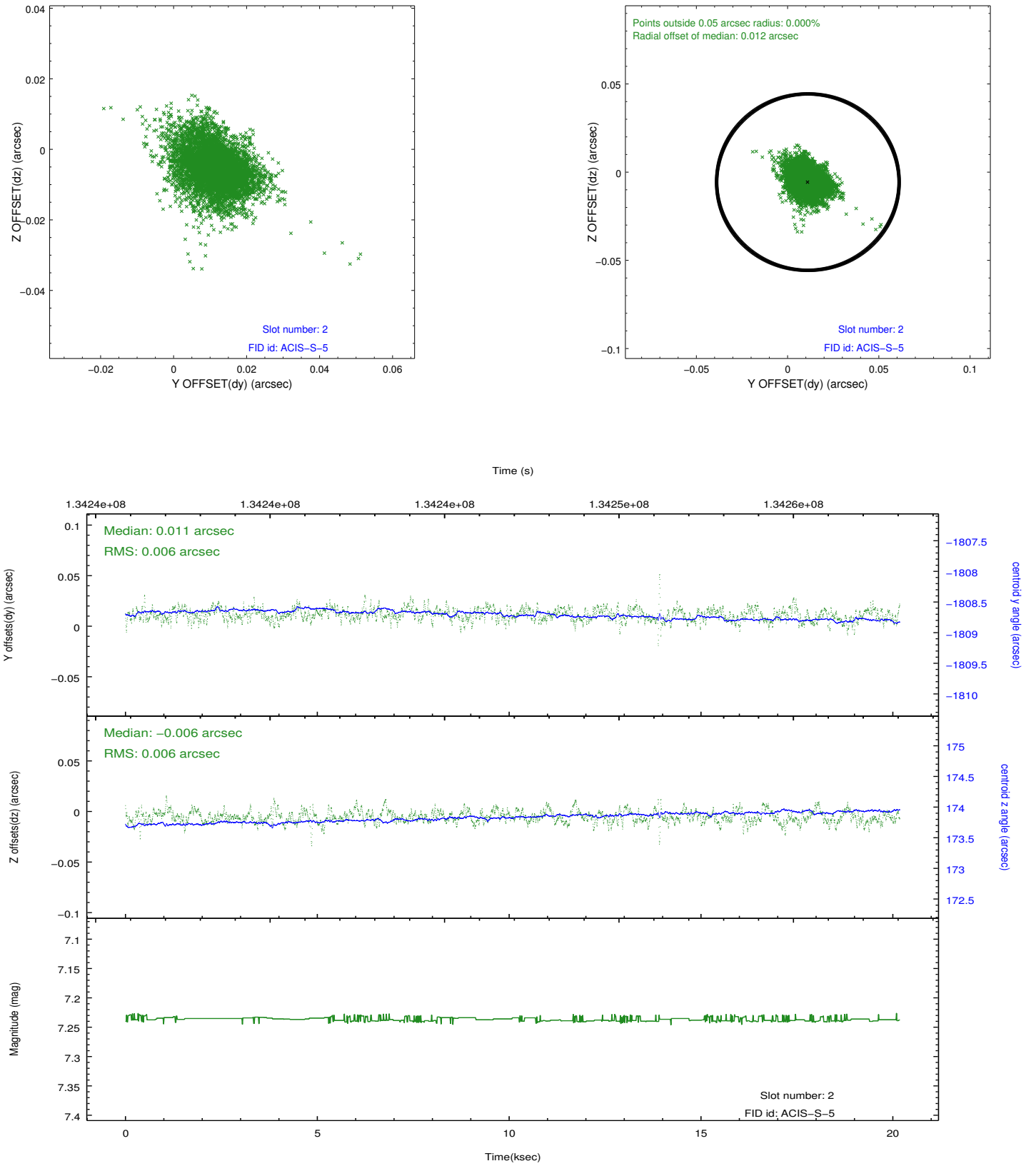
2.5.1 Slot 0



2.5.2 Slot 1



2.5.3 Slot 2



A Summary

A.1 Status

V&V Scientist	Joy Nichols
V&V Date (YYYY-MM-DD)	2012.10.22
V&V Edition	1
V&V Disposition and Status	OK
V&V Charge Time	20.179

A.2 Comments