

V&V Reference Report

L2 ASCDS Version : 7.6.9

Observation 2806 - L2 Version 001
Chandra X-Ray Center

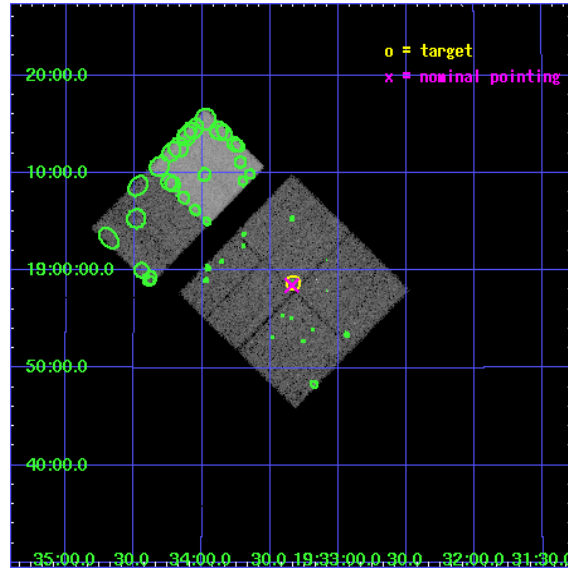
L2 Processing Date : Oct 14 2006

Contents

1	Front	2
2	OBI	3
2.1	OBI	3
2.1.1	Images	3
2.1.2	Bias	3
2.1.3	Parameters	4
2.1.4	Events	4
2.2	Compared Parameters	5
2.3	Aspect	6
2.4	Star Slots	9
2.4.1	Slot 3	9
2.4.2	Slot 4	10
2.4.3	Slot 5	11
2.4.4	Slot 6	12
2.4.5	Slot 7	13
2.5	FID Slots	14
2.5.1	Slot 0	14
2.5.2	Slot 1	15
2.5.3	Slot 2	16
3	Point Sources	17
A	Summary	18
A.1	Status	18
A.2	Comments	18

1 Front

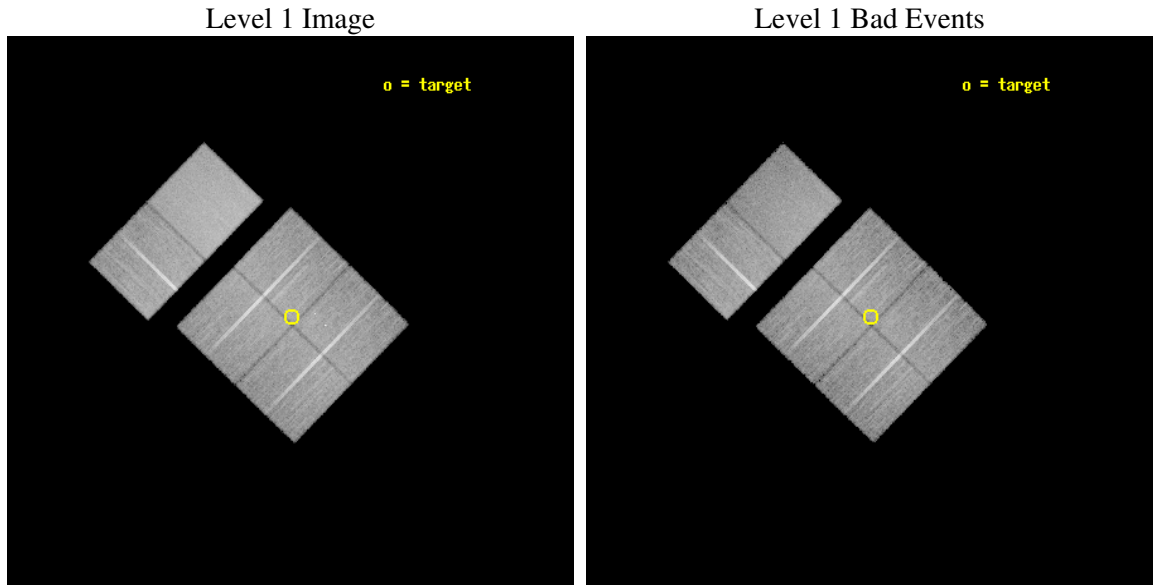
seq_num	500256
obs_id	2806
title	A CHANDRA SURVEY FOR COMPACT OBJECTS IN SUPERNOVA REMNANTS
observer	Prof. Shrinivas Kulkarni
object	G054.4-0.3
dtcycle	0
cycle	P
ra_targ	293.333333
dec_targ	18.978889
ra_nom	293.33511131928
dec_nom	18.974577398075
roll_nom	314.25551791853
revision	2
ontime	24959.999907017
livetime	24643.941359087
ontime0	24959.999907017
ontime1	24959.999907017
ontime2	24959.999907017
ontime3	24959.999907017
ontime6	24956.758946776
ontime7	24959.999907017
l2events	166787



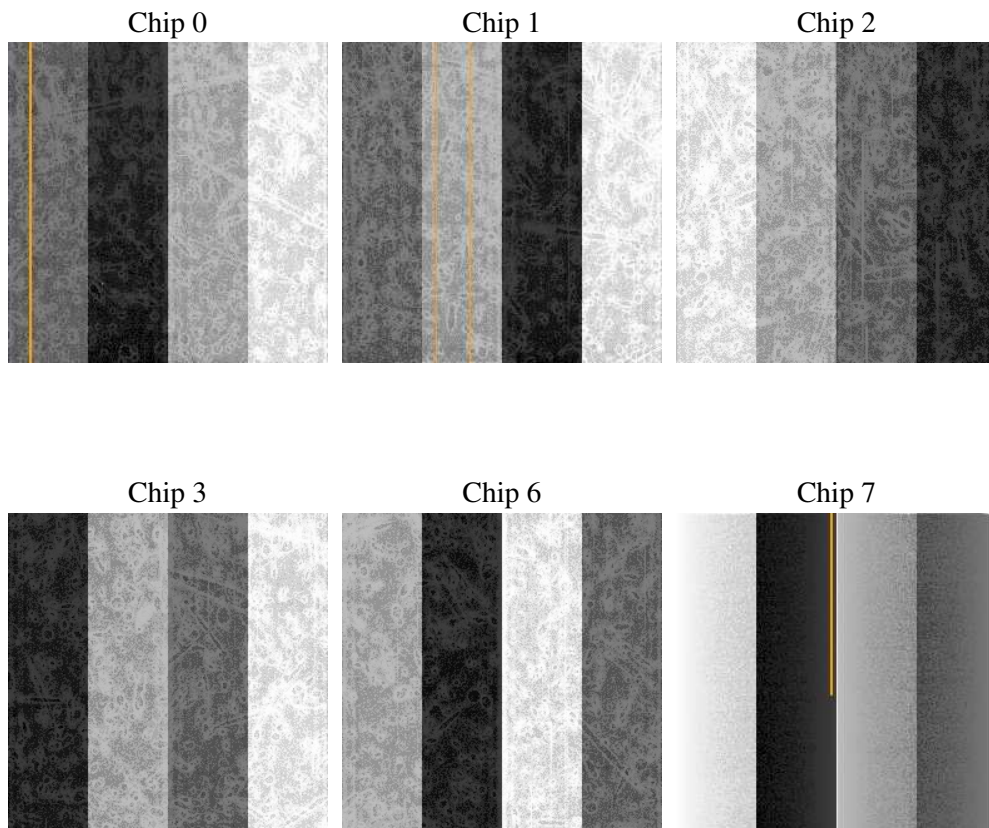
2 OBI

2.1 OBI

2.1.1 Images



2.1.2 Bias



2.1.3 Parameters

obi_num	0
ascdsver	7.6.9
caldbver	3.2.3
date	2006-10-14T20:54:32
revision	2

sched_exp_time	25000.000000
ontime	24965.419601589
ontime0	24965.419601589
ontime1	24965.419601589
ontime2	24965.419601589
ontime3	24965.419601589
ontime6	24962.178621441
ontime7	24965.419601589
l1events	999695

2.1.4 Events

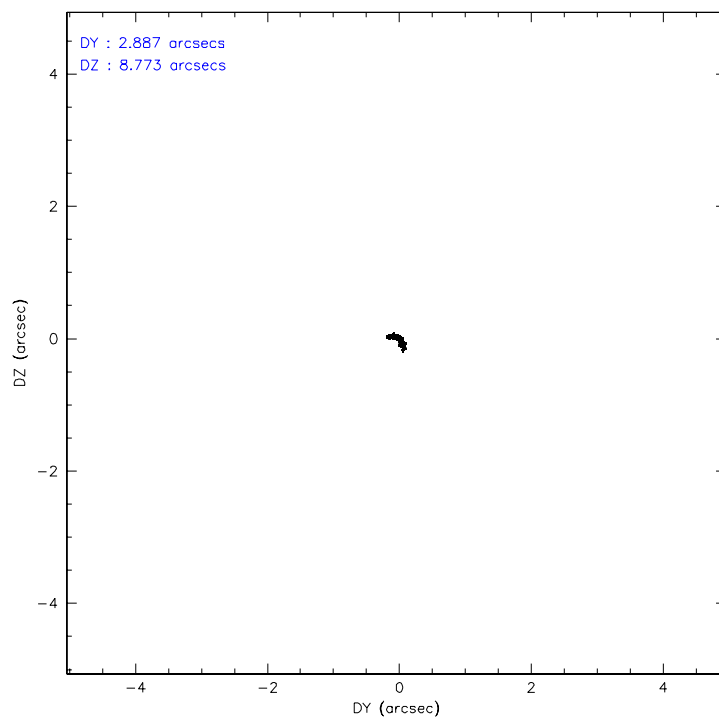
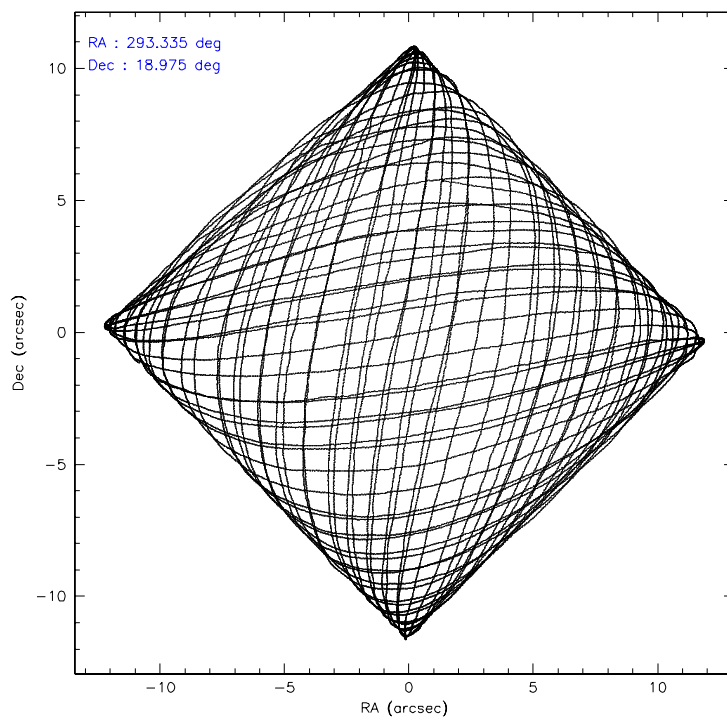
	ccd 0	ccd 1	ccd 2	ccd 3	ccd 6	ccd 7
level 1 events	148093	150160	160086	160493	168451	212412
rejected events	127786	128703	139716	140354	149014	131845
rejected %	86%	85%	87%	87%	88%	62%

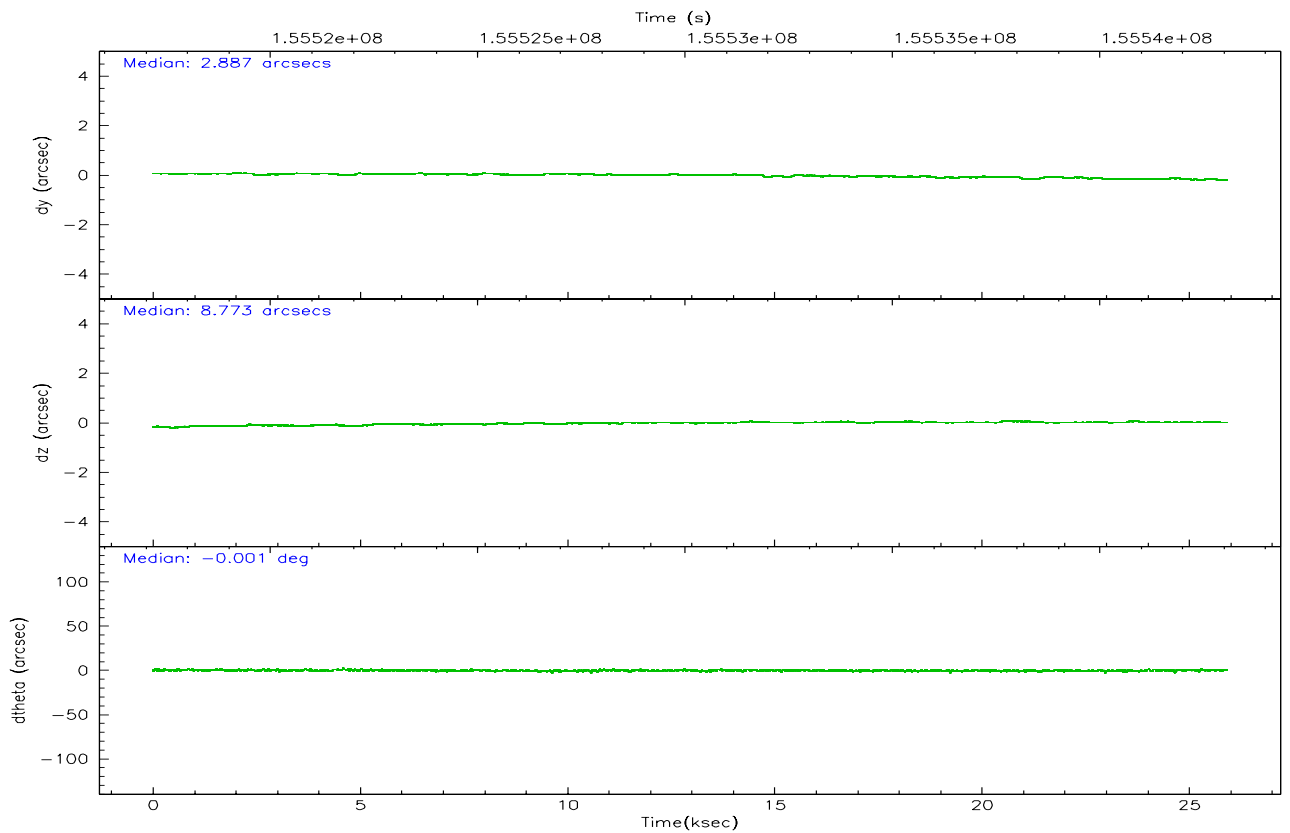
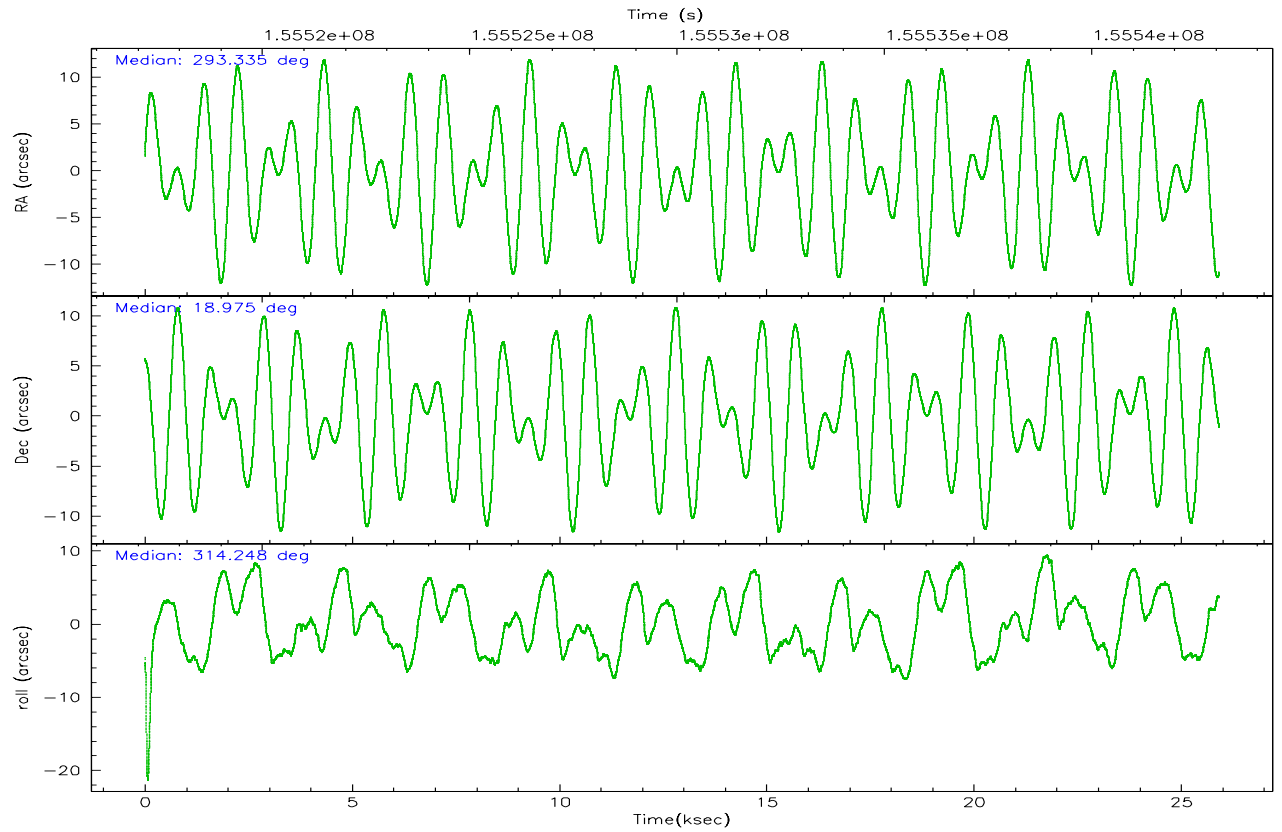
	ccd 0	ccd 1	ccd 2	ccd 3	ccd 6	ccd 7
grade 0 events	9249	9462	9816	9680	7925	4742
	6%	6%	6%	6%	4%	2%
grade 1 events	92	97	102	104	93	133
	0%	0%	0%	0%	0%	0%
grade 2 events	3983	4274	3822	3600	3898	19637
	2%	2%	2%	2%	2%	9%
grade 3 events	1909	2016	1883	1772	1884	4115
	1%	1%	1%	1%	1%	1%
grade 4 events	1813	1979	1830	1794	1843	3996
	1%	1%	1%	1%	1%	1%
grade 5 events	6156	6571	6092	7018	7314	14094
	4%	4%	3%	4%	4%	6%
grade 6 events	3358	3731	3024	3297	3894	48099
	2%	2%	1%	2%	2%	22%
grade 7 events	121533	122030	133517	133228	141600	117596
	82%	81%	83%	83%	84%	55%

2.2 Compared Parameters

Parameter	Planned	Actual	Parameter	Planned	Actual
Instrument	ACIS	ACIS	Obspar format version number	6	6
Detector	ACIS-012367	ACIS-012367	Obspar file type	PREDICTED	ACTUAL
Grating	NONE	NONE	Obspar update status	NONE	UPDATED
Data mode	FAINT	FAINT	Number of optional ACIS chips dropped	0	0
Observation mode	POINTING	POINTING	On-chip summing requested	N	N
Pointing RA	293.307211	293.3351113192842	Subarray requested	NONE	NONE
Pointing Dec	18.981888	18.97457739807514	Alternating exposures requested	N	N
Pointing Roll	314.055909	314.2555179185288	Primary exposure time	0.000000	3.2
SIM focus pos (mm)	-0.782348	-0.7809083437167272			
SIM defocus (mm)	0	0.001439871863259334			
SIM translation stage pos (mm)	-233.592463	-233.5874344608287			
SIM translation stage offset (mm)	0	-0.005018542100998502			
Observation start time	155518081.184000	155516749.52337			
Observation start date	2002-12-05T23:26:57	2002-12-05T23:05:49			
Observation end time	155543081.184000	155543879.22451			
Observation end date	2002-12-06T06:23:37	2002-12-06T06:37:59			
Read mode	TIMED	TIMED			

2.3 Aspect



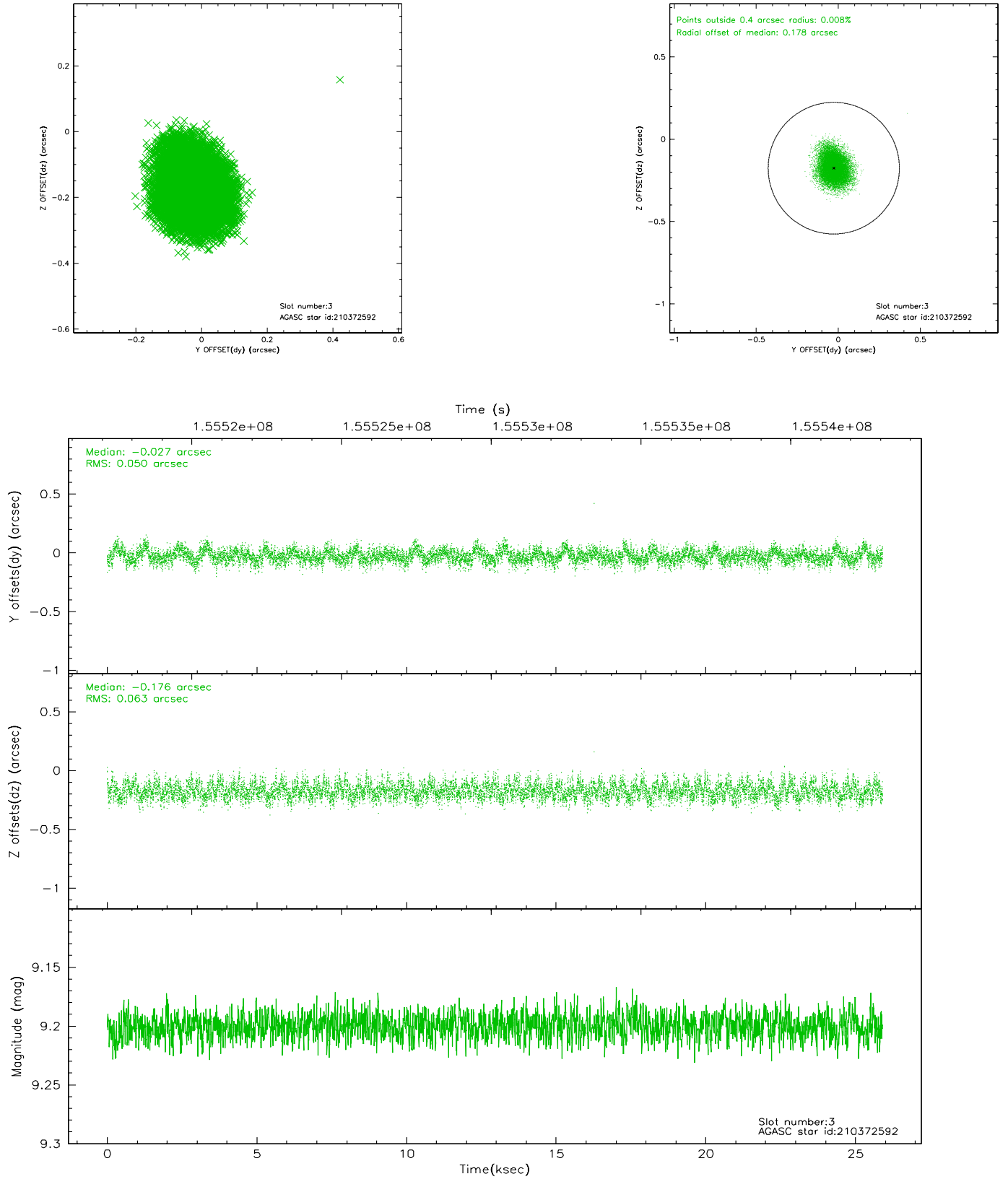


Slot Statistics

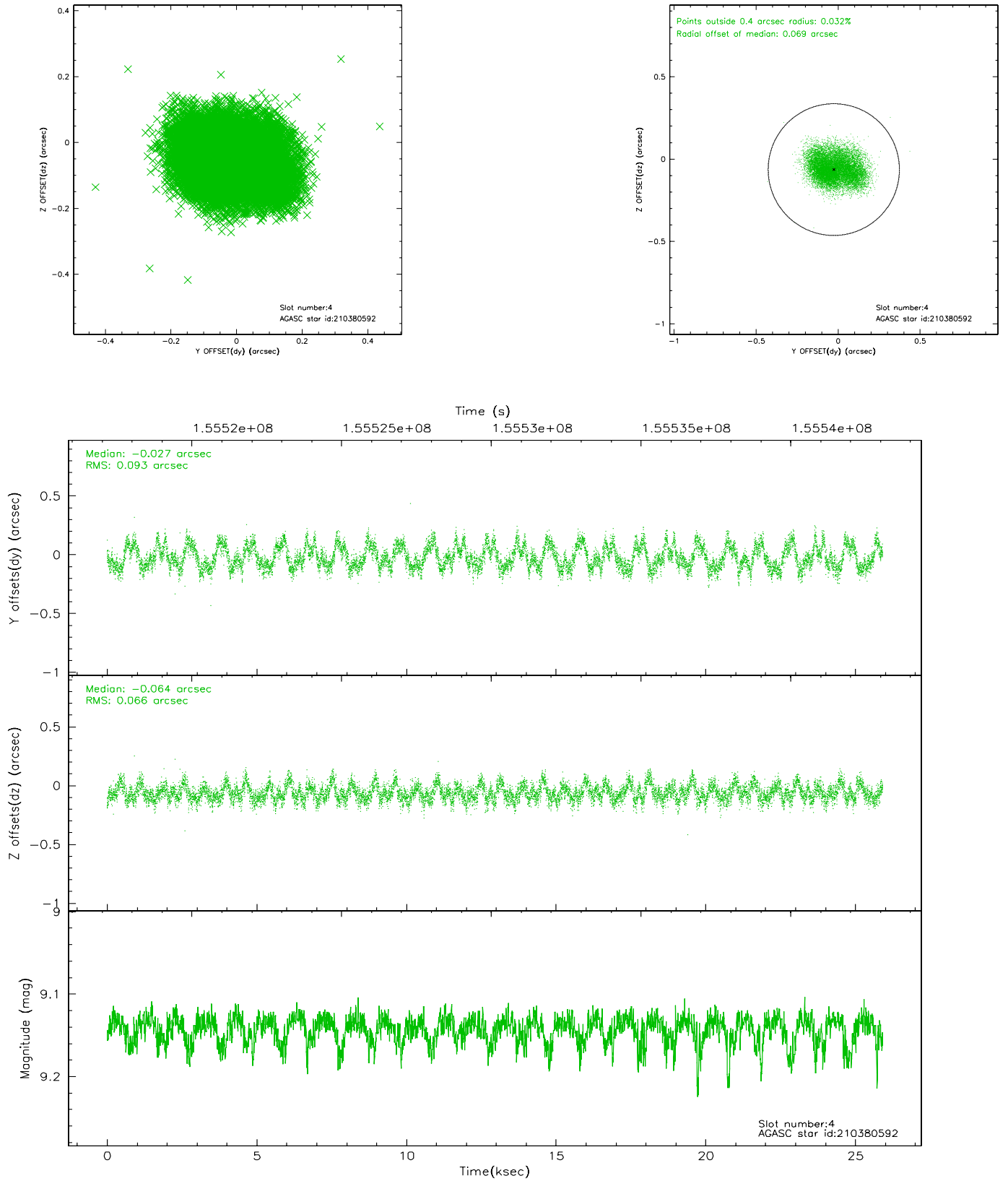
slot	status	id	mag	n_pts	med_dy	med_dz	dr1	dr2	ra	dec	mean_y	mean_z
0	FID	ACIS-I-1	7.25	6320	-0.066	0.086	0.007	0.012	0.000000	0.000000	936.85	-832.11
1	FID	ACIS-I-4	7.19	6317	0.033	0.030	0.009	0.014	0.000000	0.000000	2157.08	1067.57
2	FID	ACIS-I-6	7.25	6321	-0.064	-0.051	0.008	0.013	0.000000	0.000000	402.93	1709.82
3	GUIDE	210372592	9.20	12636	-0.027	-0.176	0.086	0.138	292.900736	18.702395	-240.41	-1694.95
4	GUIDE	210380592	9.14	12634	-0.027	-0.064	0.125	0.191	293.362355	18.406916	1619.95	-1304.11
5	GUIDE	210901216	9.58	12635	-0.161	-0.045	0.136	0.203	292.588783	19.192934	-2246.74	-1224.22
6	GUIDE	210911344	9.28	12635	-0.061	-0.005	0.091	0.145	293.760695	19.338260	148.48	2000.37
7	GUIDE	211032464	9.53	12636	0.275	0.289	0.097	0.156	294.261480	18.927904	2394.29	2207.12

2.4 Star Slots

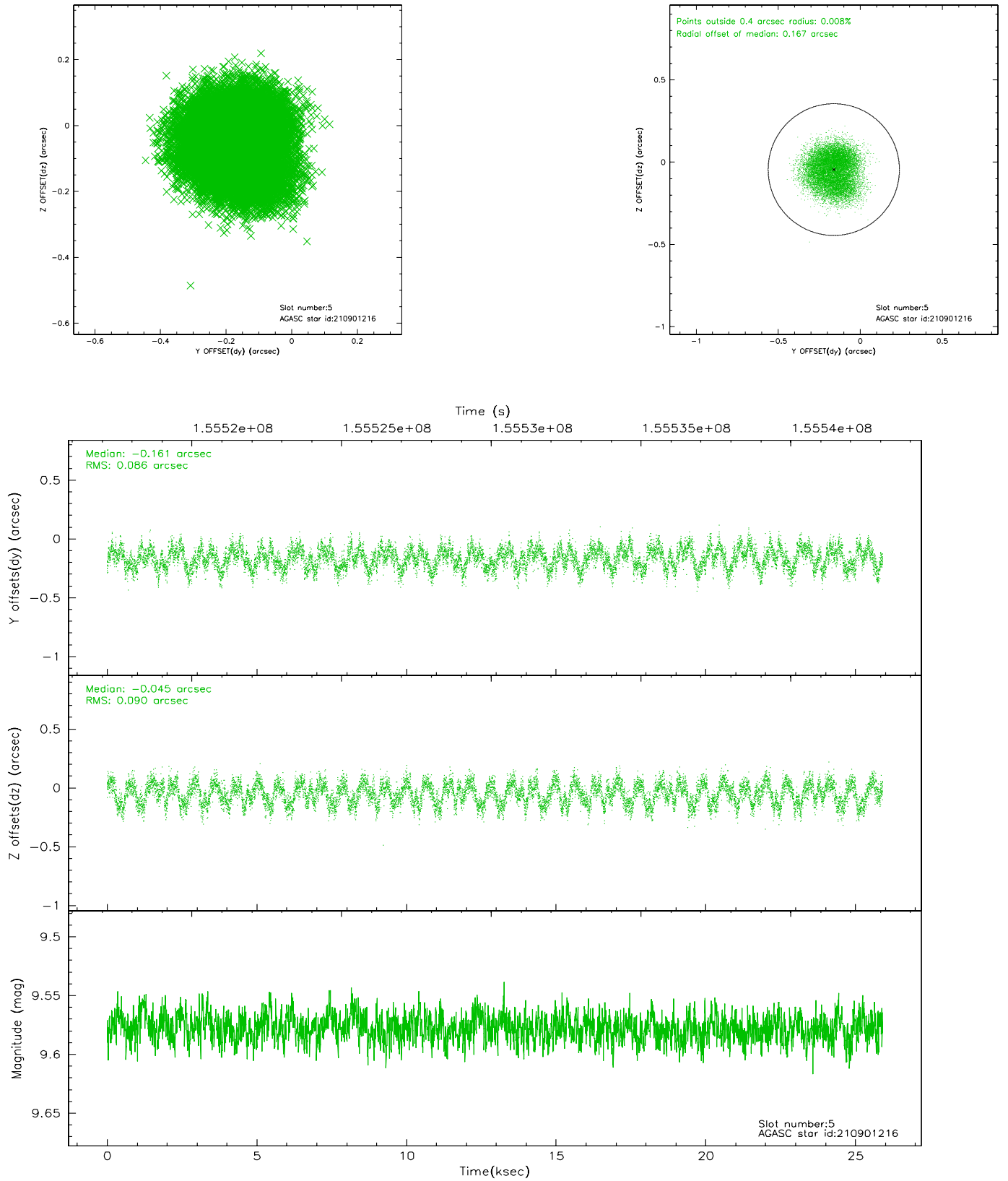
2.4.1 Slot 3



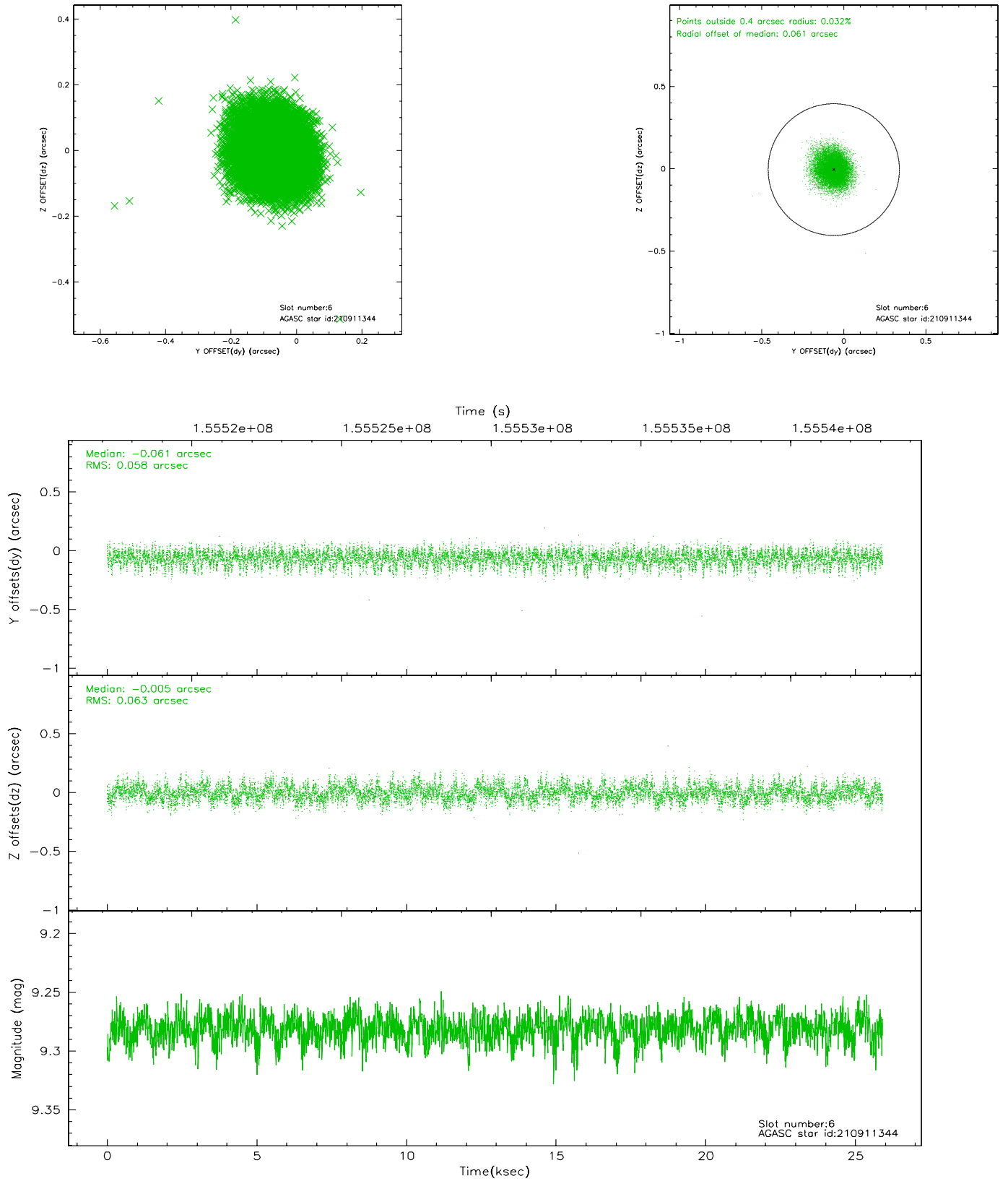
2.4.2 Slot 4



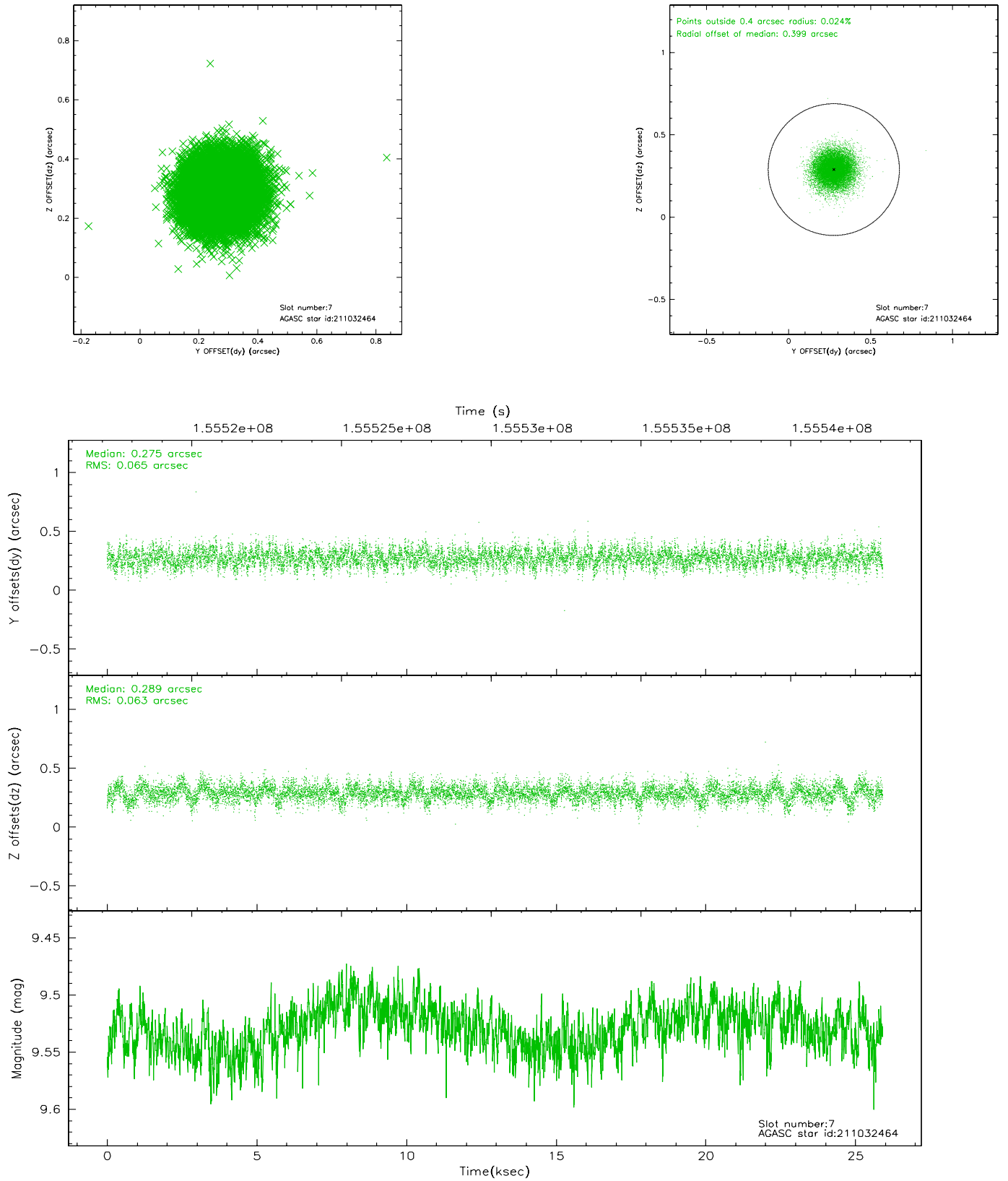
2.4.3 Slot 5



2.4.4 Slot 6

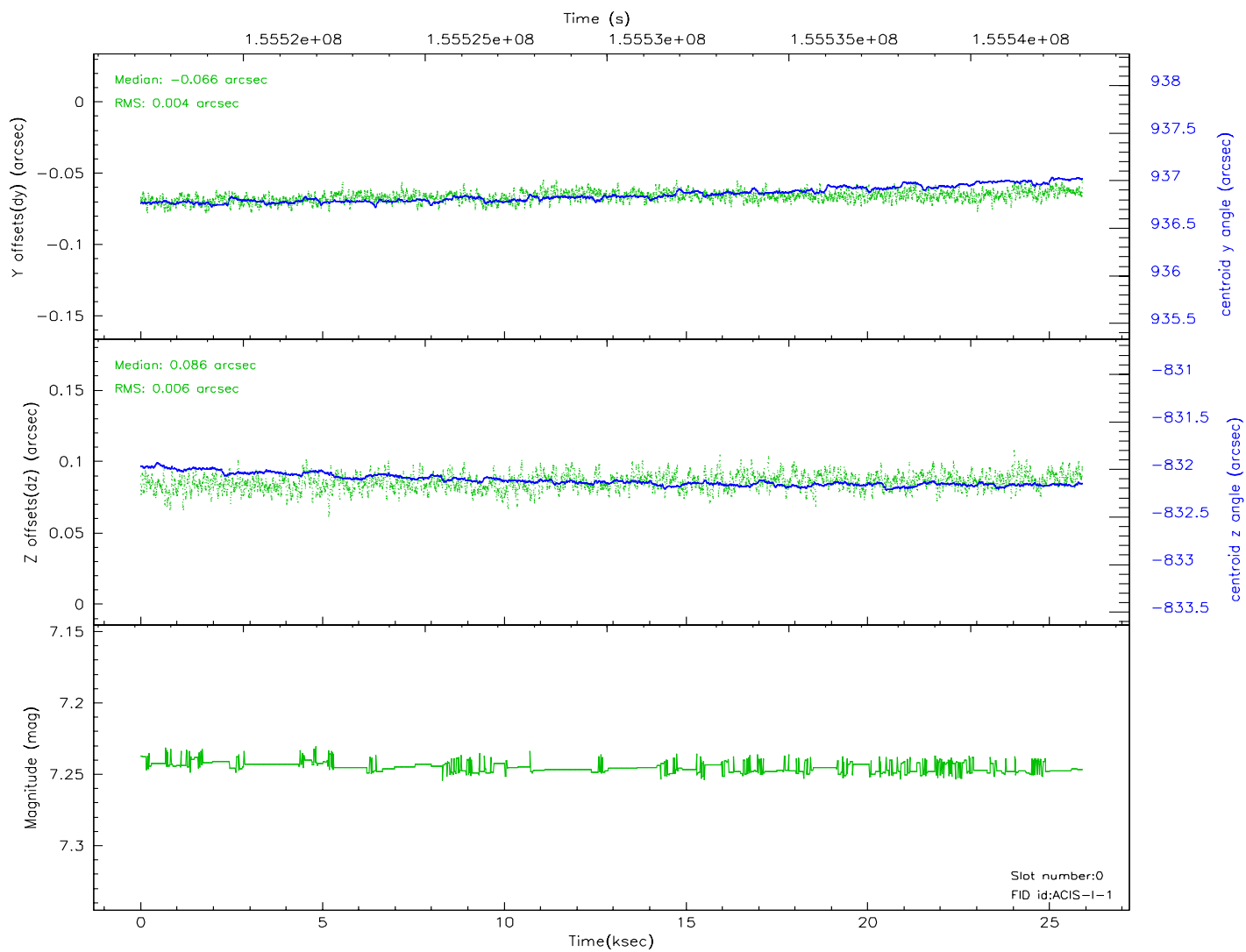
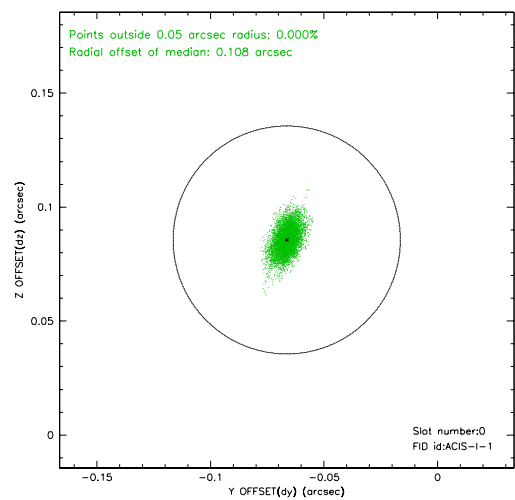
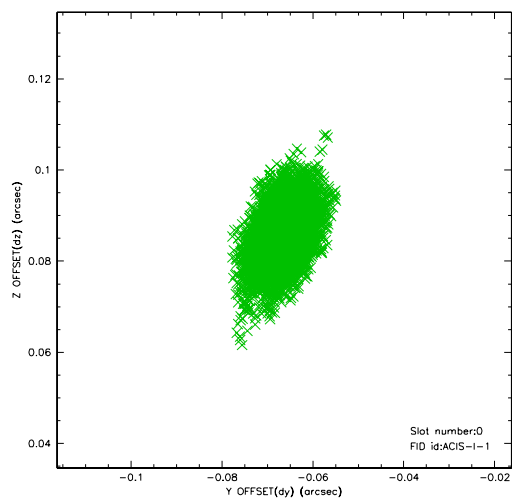


2.4.5 Slot 7

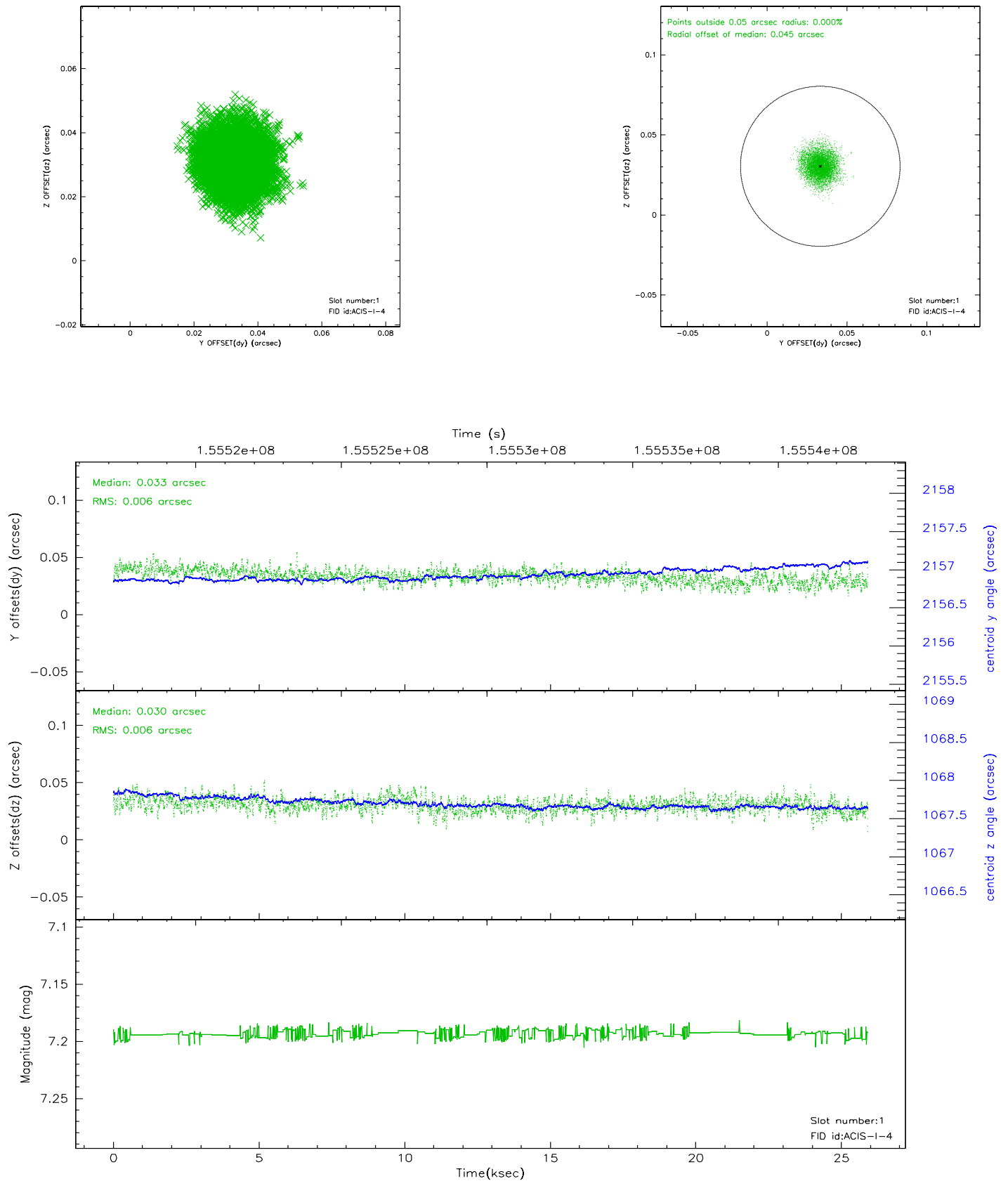


2.5 FID Slots

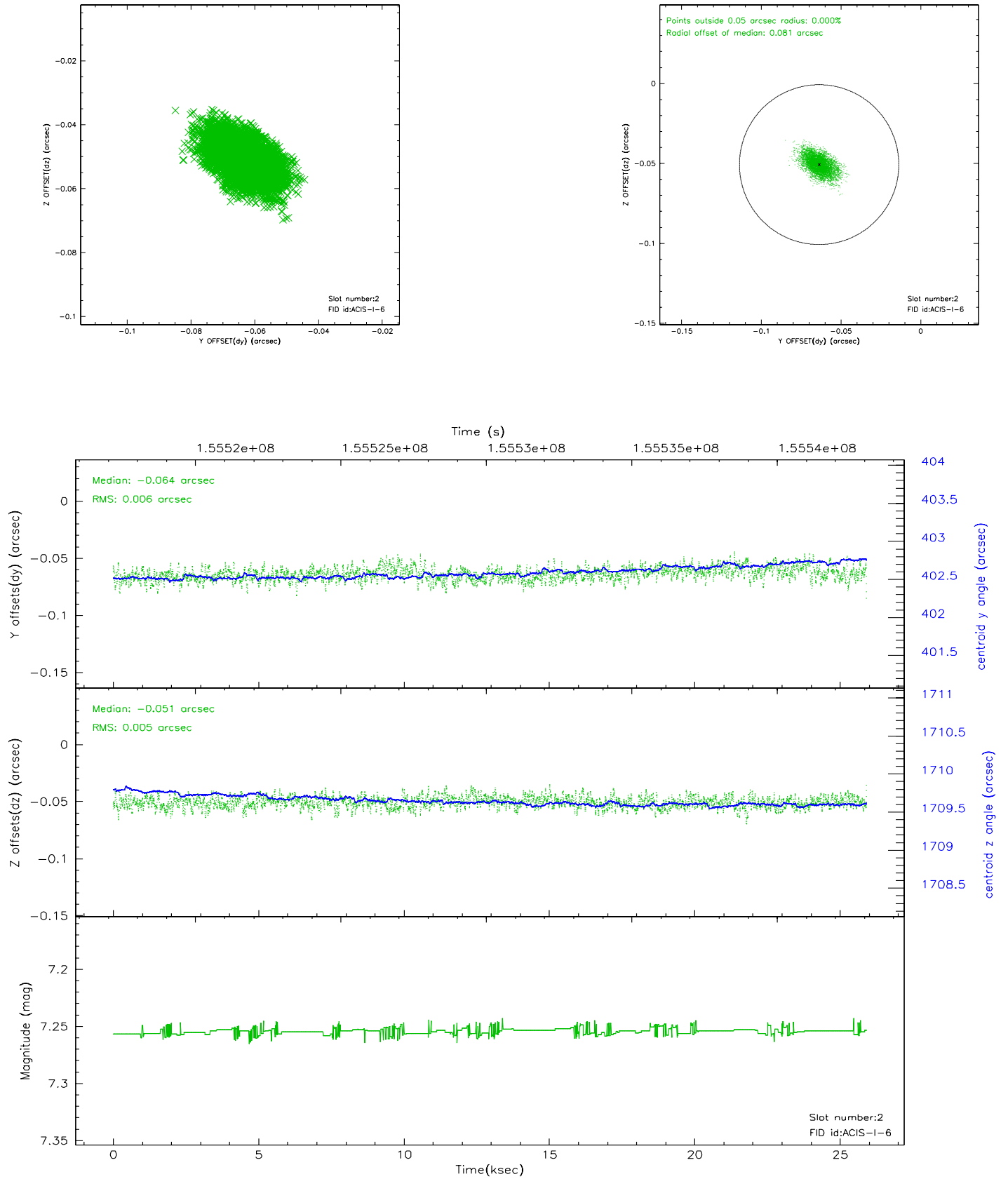
2.5.1 Slot 0



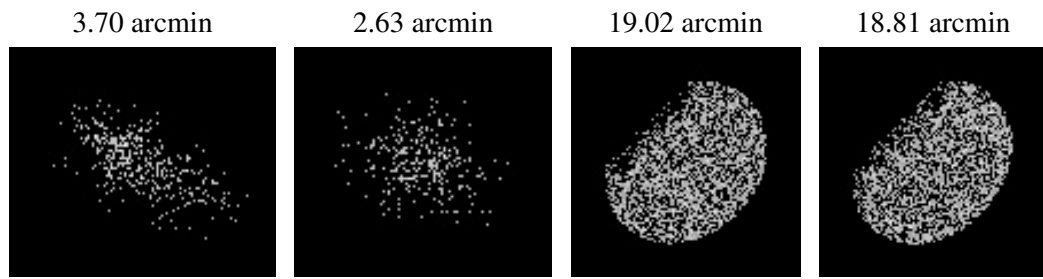
2.5.2 Slot 1



2.5.3 Slot 2



3 Point Sources



A Summary

A.1 Status

V&V Scientist	Beth Sundheim
V&V Date (YYYY-MM-DD)	2006.10.15
V&V Edition	1
V&V Disposition and Status	OK
V&V Charge Time	24.963

A.2 Comments