

V&V Reference Report

L2 ASCDS Version : 7.6.9

Observation 2804 - L2 Version 001
Chandra X-Ray Center

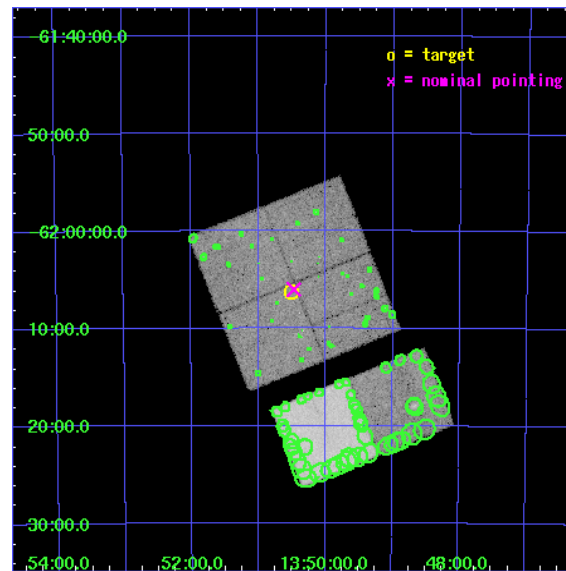
L2 Processing Date : Oct 9 2006

Contents

1	Front	2
2	OBI	3
2.1	OBI	3
2.1.1	Images	3
2.1.2	Bias	3
2.1.3	Parameters	4
2.1.4	Events	4
2.2	Compared Parameters	5
2.3	Aspect	6
2.4	Star Slots	9
2.4.1	Slot 3	9
2.4.2	Slot 4	10
2.4.3	Slot 5	11
2.4.4	Slot 6	12
2.4.5	Slot 7	13
2.5	FID Slots	14
2.5.1	Slot 0	14
2.5.2	Slot 1	15
2.5.3	Slot 2	16
3	Point Sources	17
A	Summary	18
A.1	Status	18
A.2	Comments	18

1 Front

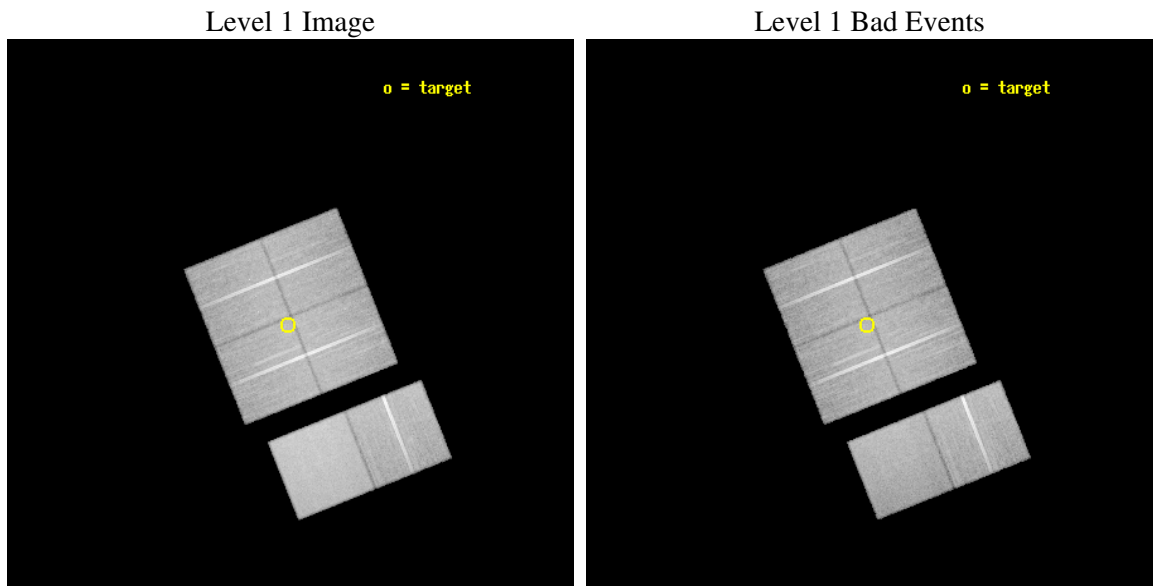
seq_num	500254
obs_id	2804
title	A CHANDRA SURVEY FOR COMPACT OBJECTS IN SUPERNOVA REMNANTS
observer	Prof. Shrinivas Kulkarni
object	G309.8+0.0
dtcycle	0
cycle	P
ra_targ	207.625
dec_targ	-62.103611
ra_nom	207.61797764725
dec_nom	-62.100333738093
roll_nom	158.2087059812
revision	2
ontime	39676.799852192
livetime	39174.388321963
ontime0	39667.07699132
ontime1	39676.799852192
ontime2	39676.799852192
ontime3	39676.799852192
ontime6	39676.799852192
ontime7	39676.799852192
l2events	269582



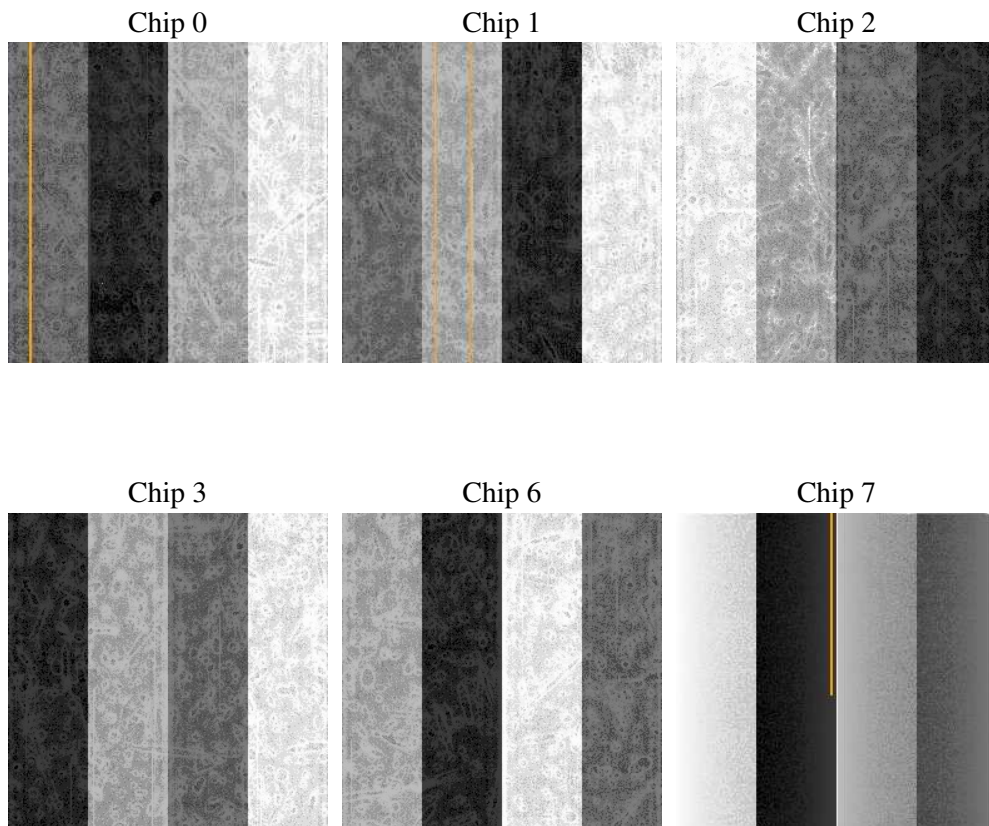
2 OBI

2.1 OBI

2.1.1 Images



2.1.2 Bias



2.1.3 Parameters

obi_num	1
ascdsver	7.6.9
caldsver	3.2.3
date	2006-10-09T13:01:49
revision	2

sched_exp_time	39500.000000
ontime	39851.321688026
ontime0	39841.598827153
ontime1	39851.321688026
ontime2	39851.321688026
ontime3	39851.321688026
ontime6	39851.321688026
ontime7	39851.321707934
l1events	1564202

2.1.4 Events

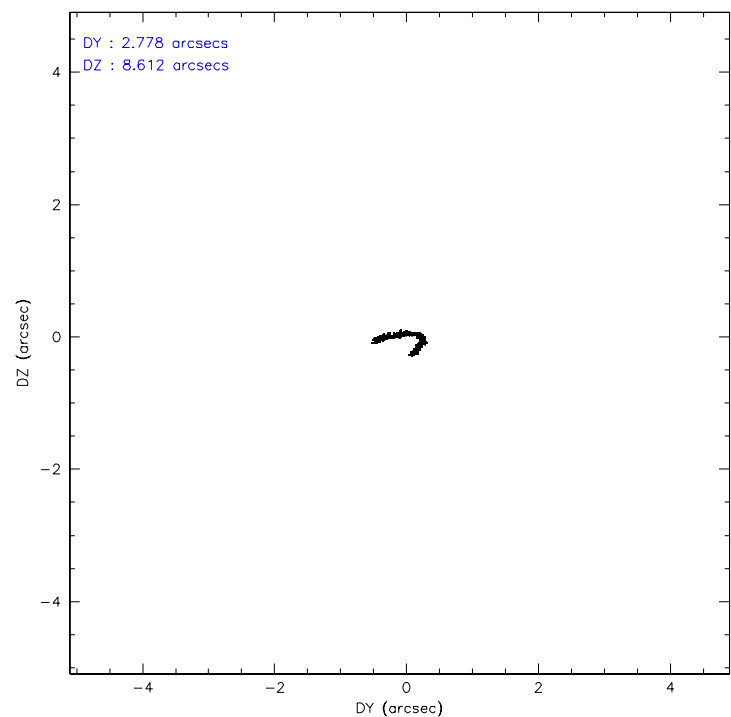
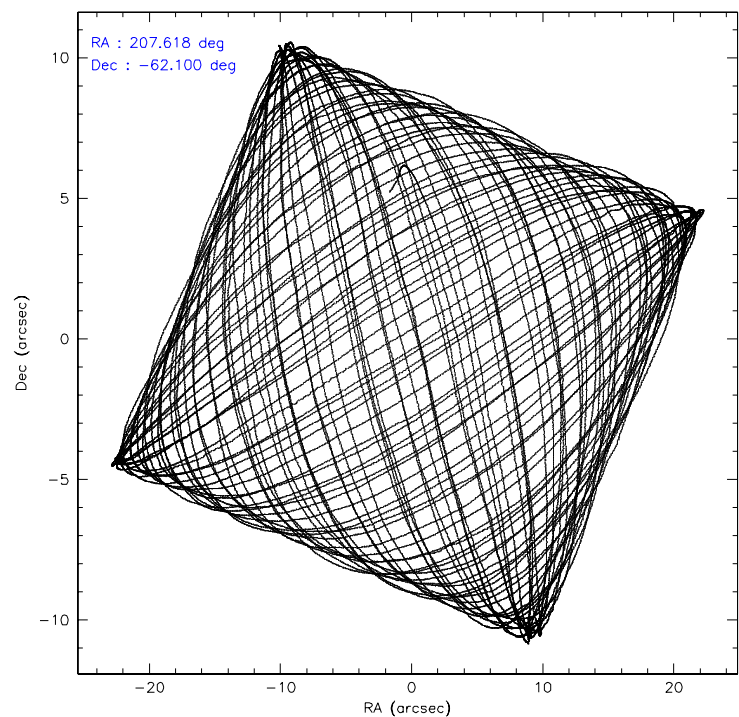
	ccd 0	ccd 1	ccd 2	ccd 3	ccd 6	ccd 7
level 1 events	228960	231675	256399	249403	265342	332423
rejected events	196426	197060	222937	216805	232973	203498
rejected %	85%	85%	86%	86%	87%	61%

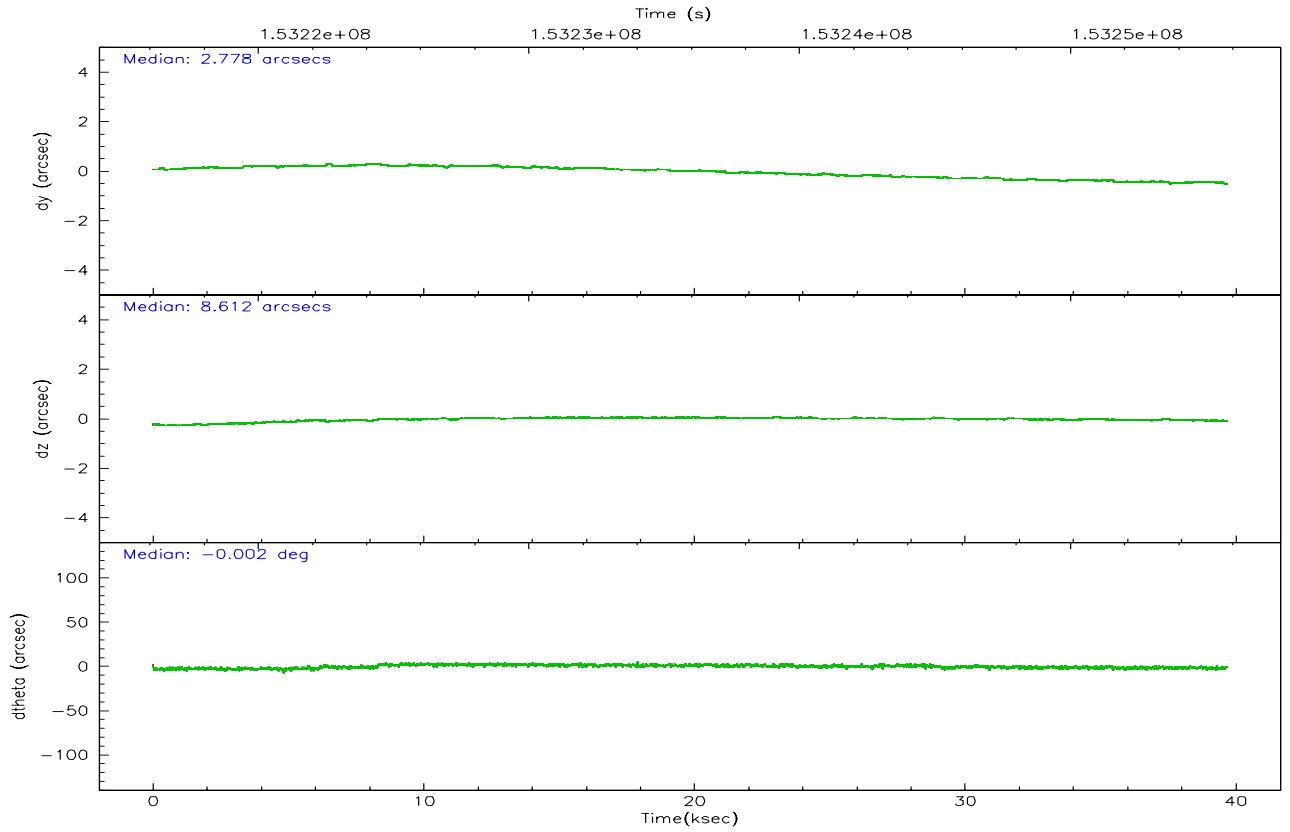
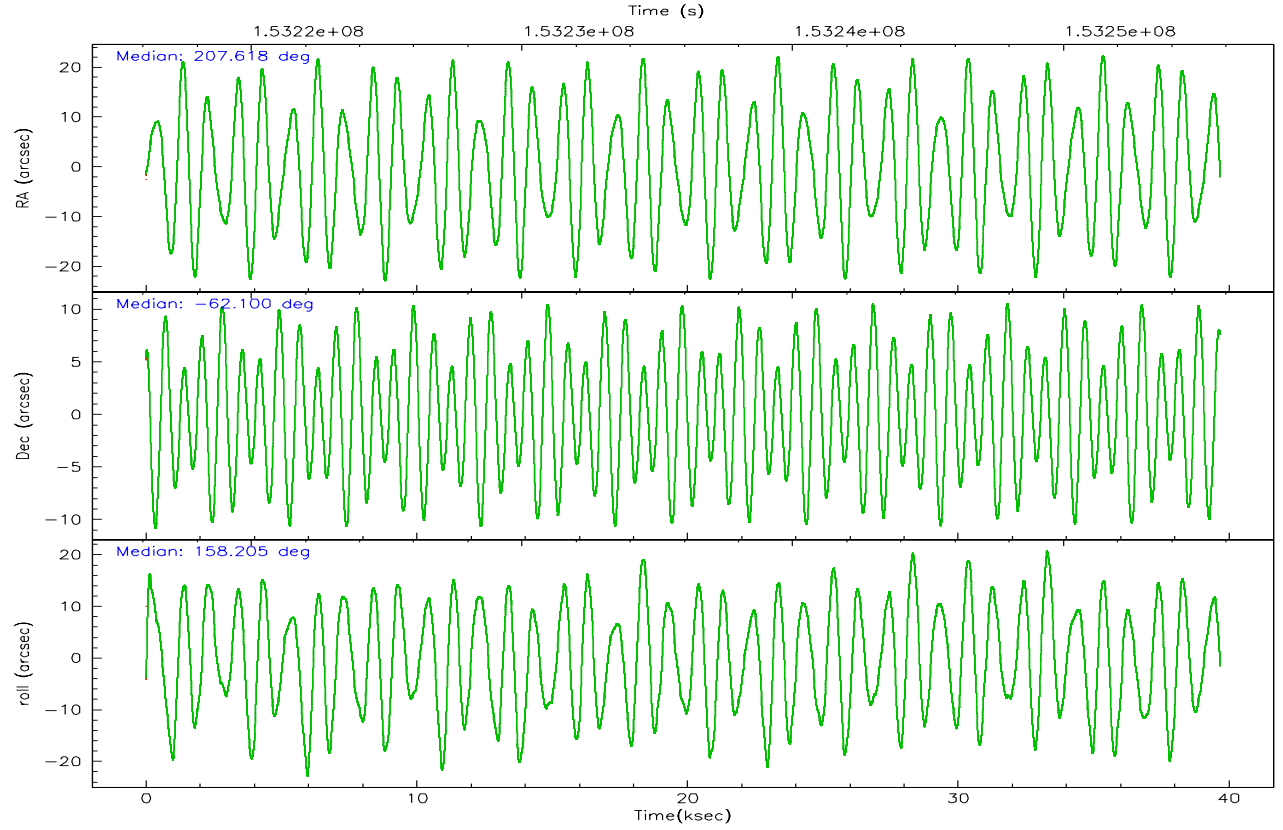
	ccd 0	ccd 1	ccd 2	ccd 3	ccd 6	ccd 7
grade 0 events	14987	15298	16507	15842	13929	8225
	6%	6%	6%	6%	5%	2%
grade 1 events	146	129	159	160	127	190
	0%	0%	0%	0%	0%	0%
grade 2 events	6443	7105	6270	5862	6365	31806
	2%	3%	2%	2%	2%	9%
grade 3 events	3094	3162	2896	2972	3024	6912
	1%	1%	1%	1%	1%	2%
grade 4 events	2783	3087	2928	2976	2977	6873
	1%	1%	1%	1%	1%	2%
grade 5 events	9499	9939	9181	10556	11363	22263
	4%	4%	3%	4%	4%	6%
grade 6 events	5358	6100	4993	5082	6208	75622
	2%	2%	1%	2%	2%	22%
grade 7 events	186650	186855	213465	205953	221349	180532
	81%	80%	83%	82%	83%	54%

2.2 Compared Parameters

Parameter	Planned	Actual	Parameter	Planned	Actual
Instrument	ACIS	ACIS	Obspar format version number	6	6
Detector	ACIS-012367	ACIS-012367	Obspar file type	PREDICTED	ACTUAL
Grating	NONE	NONE	Obspar update status	NONE	UPDATED
Data mode	FAINT	FAINT	Number of optional ACIS chips dropped	0	0
Observation mode	POINTING	POINTING	On-chip summing requested	N	N
Pointing RA	207.675850	207.6179776472484	Subarray requested	NONE	NONE
Pointing Dec	-62.096325	-62.10033373809258	Alternating exposures requested	N	N
Pointing Roll	158.051176	158.208705981197	Primary exposure time	0.000000	3.2
SIM focus pos (mm)	-0.782348	-0.7809083437167272			
SIM defocus (mm)	0	0.001439871863259334			
SIM translation stage pos (mm)	-233.592463	-233.5874344608287			
SIM translation stage offset (mm)	0	-0.005018542100998502			
Observation start time	153216290.184000	153215135.50253			
Observation start date	2002-11-09T08:03:46	2002-11-09T07:45:35			
Observation end time	153255790.184000	153256475.29175			
Observation end date	2002-11-09T19:02:06	2002-11-09T19:14:35			
Read mode	TIMED	TIMED			

2.3 Aspect



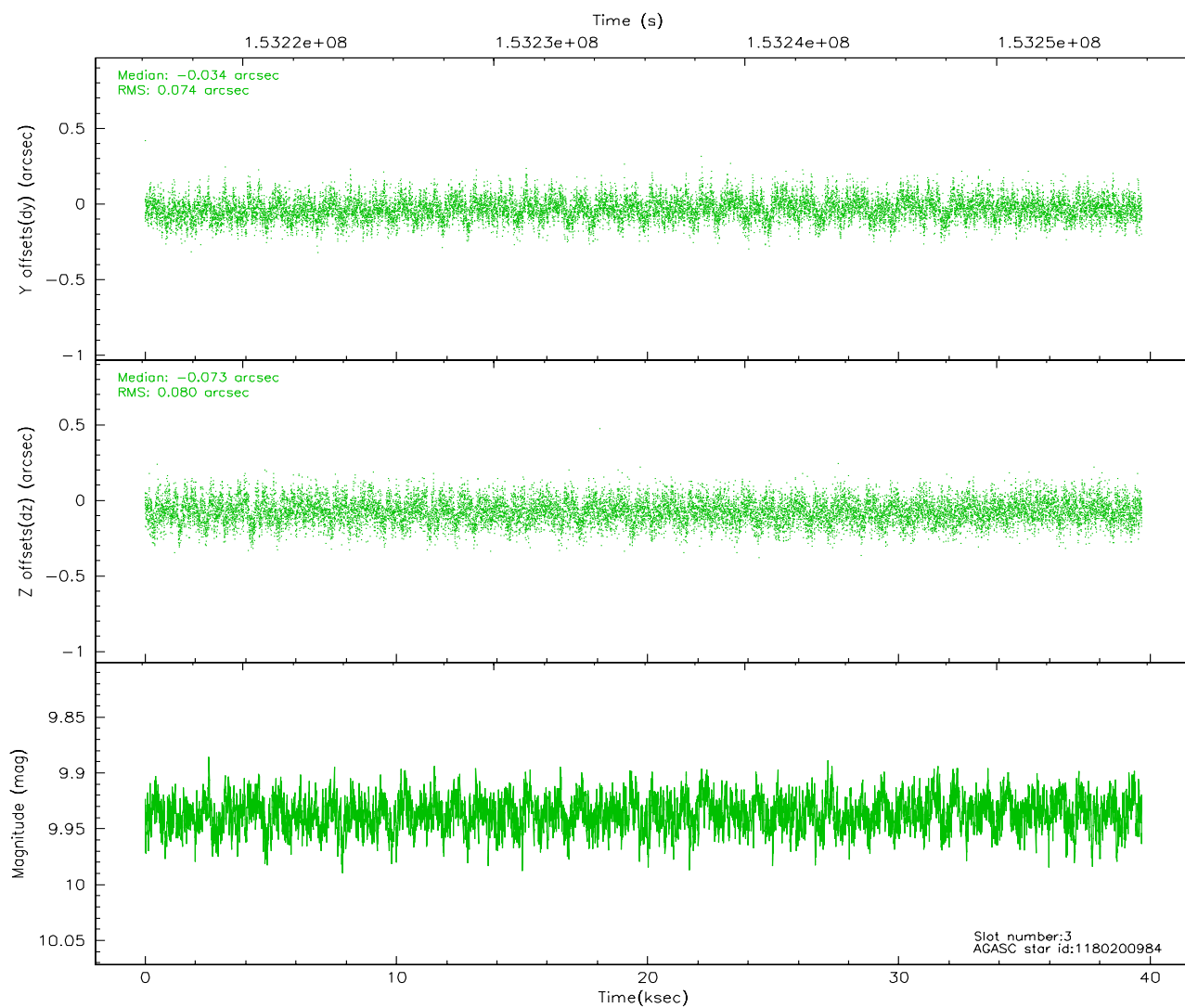
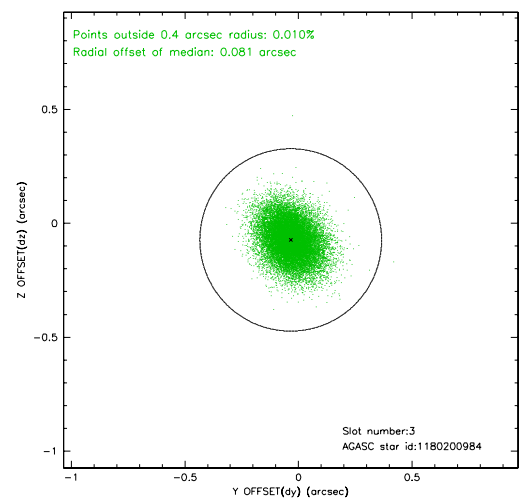
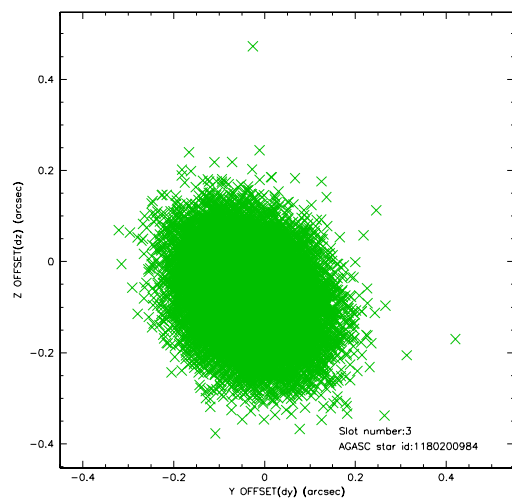


Slot Statistics

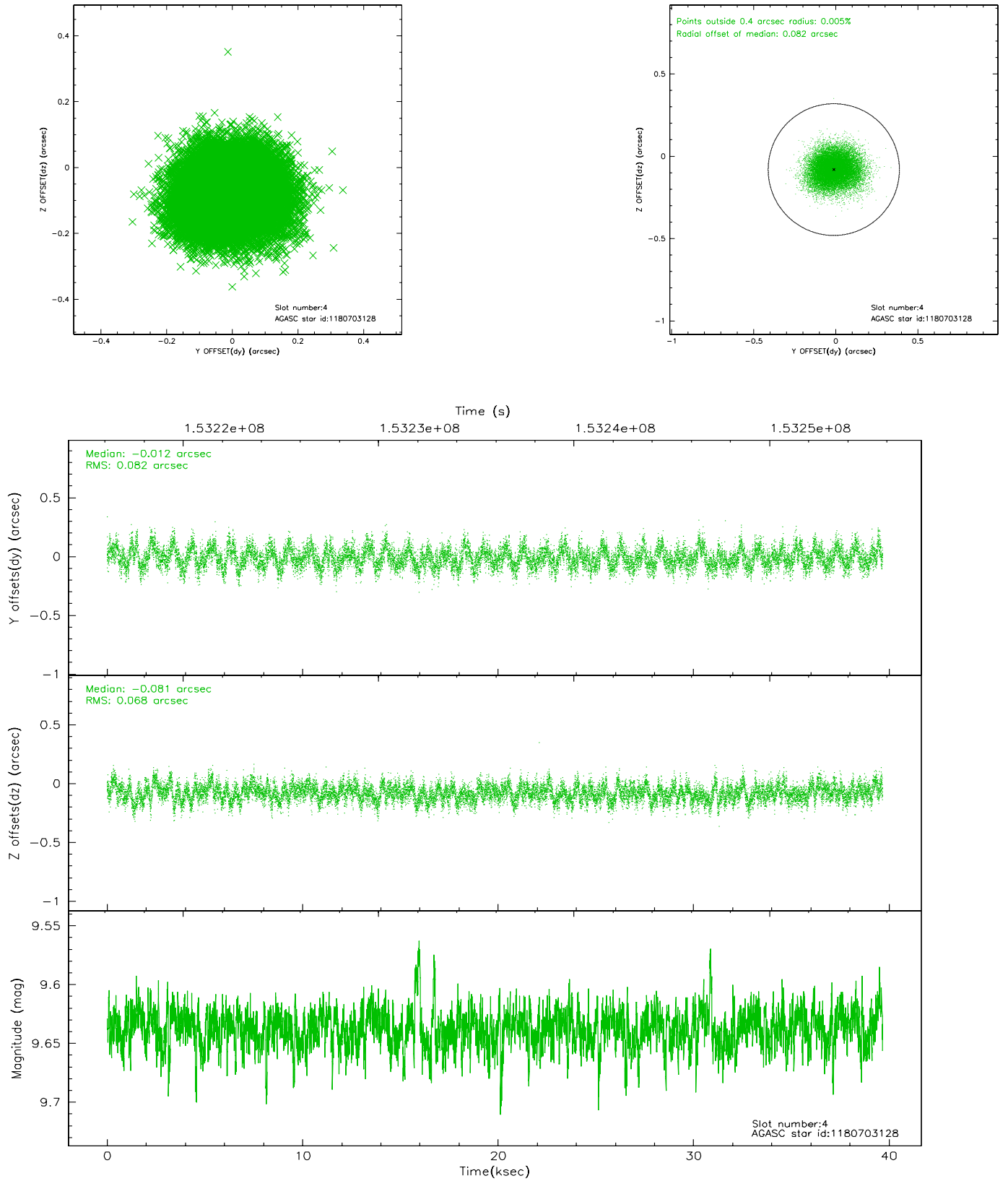
slot	status	id	mag	n_pts	med_dy	med_dz	dr1	dr2	ra	dec	mean_y	mean_z
0	FID	ACIS-I-1	7.24	9679	-0.102	0.088	0.014	0.026	0.000000	0.000000	936.97	-831.93
1	FID	ACIS-I-2	7.16	9679	-0.016	-0.041	0.014	0.022	0.000000	0.000000	-757.02	-838.52
2	FID	ACIS-I-4	7.19	9679	0.018	0.019	0.012	0.033	0.000000	0.000000	2156.96	1067.81
3	GUIDE	1180200984	9.94	19345	-0.034	-0.073	0.115	0.190	208.201209	-61.640684	-221.67	-1853.21
4	GUIDE	1180703128	9.64	19340	-0.012	-0.081	0.114	0.183	206.377509	-62.050312	2085.17	686.19
5	GUIDE	1180711952	8.06	19355	-0.012	-0.037	0.074	0.125	208.267354	-62.888019	-1967.49	2285.55
6	GUIDE	1180724504	9.31	19348	0.101	0.098	0.095	0.154	205.862671	-62.438910	2323.84	2313.06
7	GUIDE	1180206152	10.25	18847	-0.041	0.091	0.193	0.329	207.069069	-61.392677	1915.25	-1953.17

2.4 Star Slots

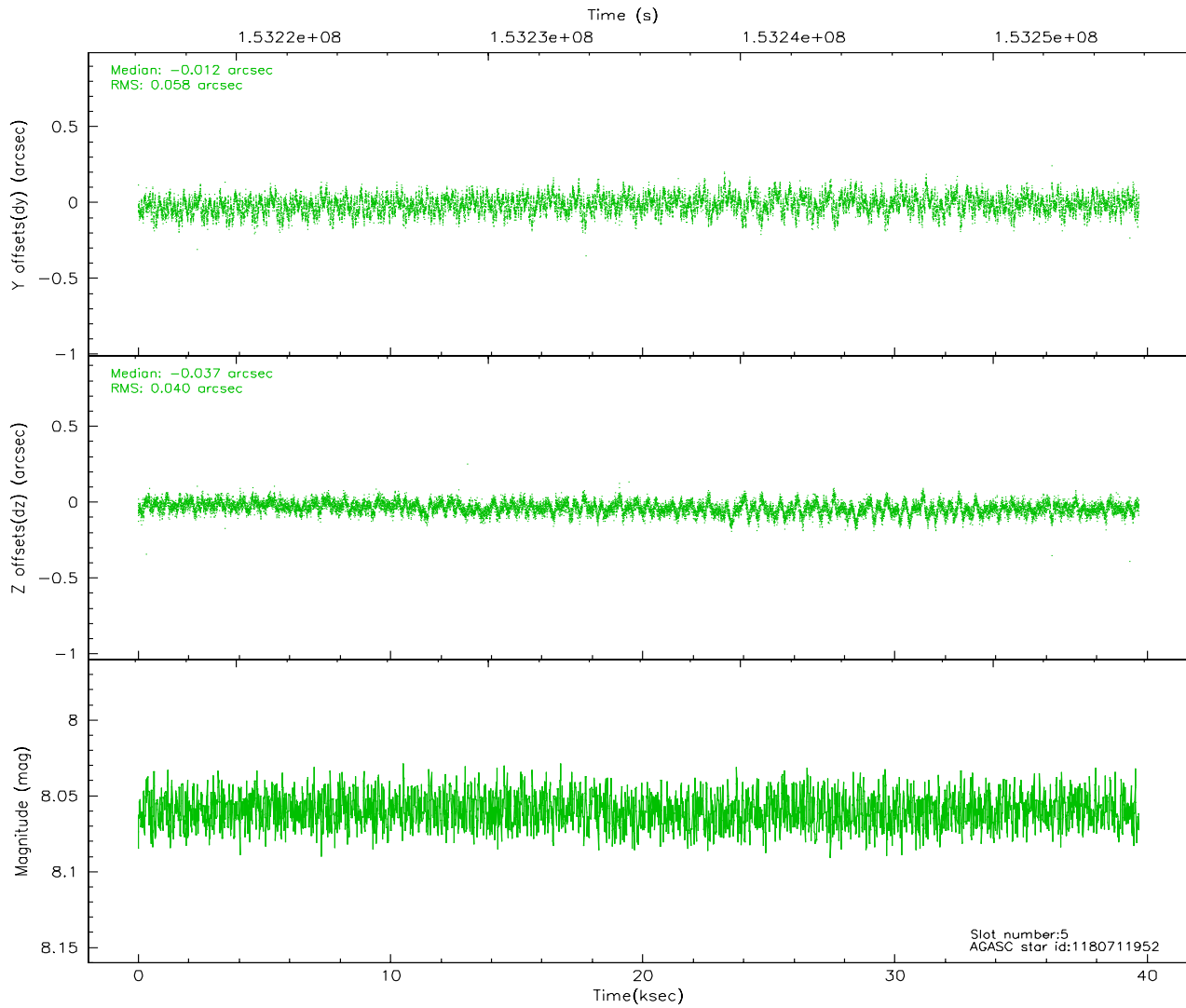
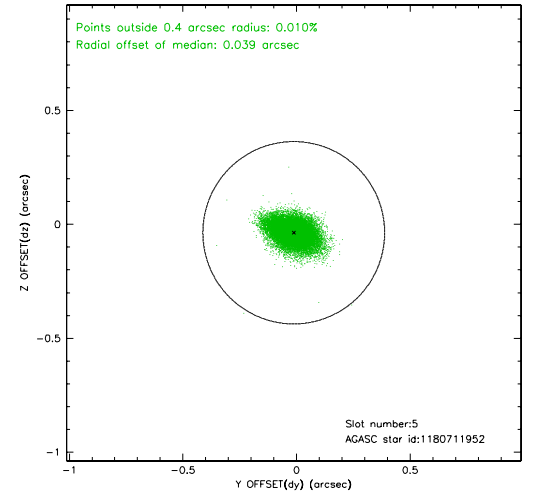
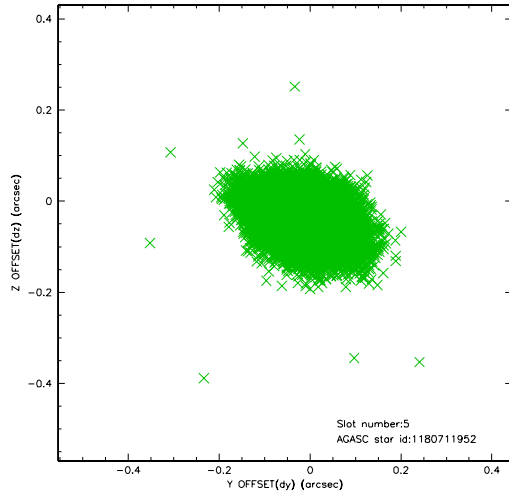
2.4.1 Slot 3



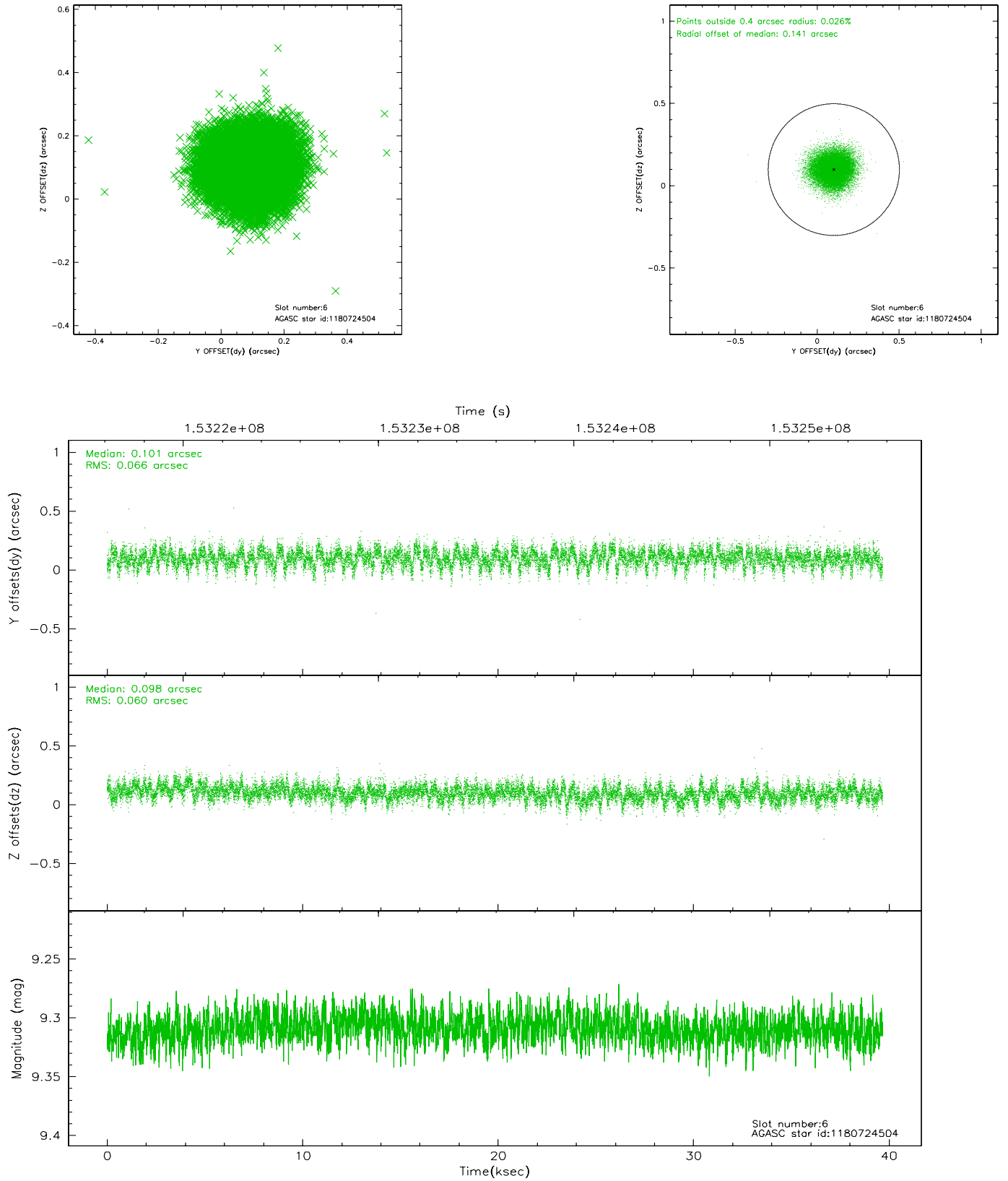
2.4.2 Slot 4



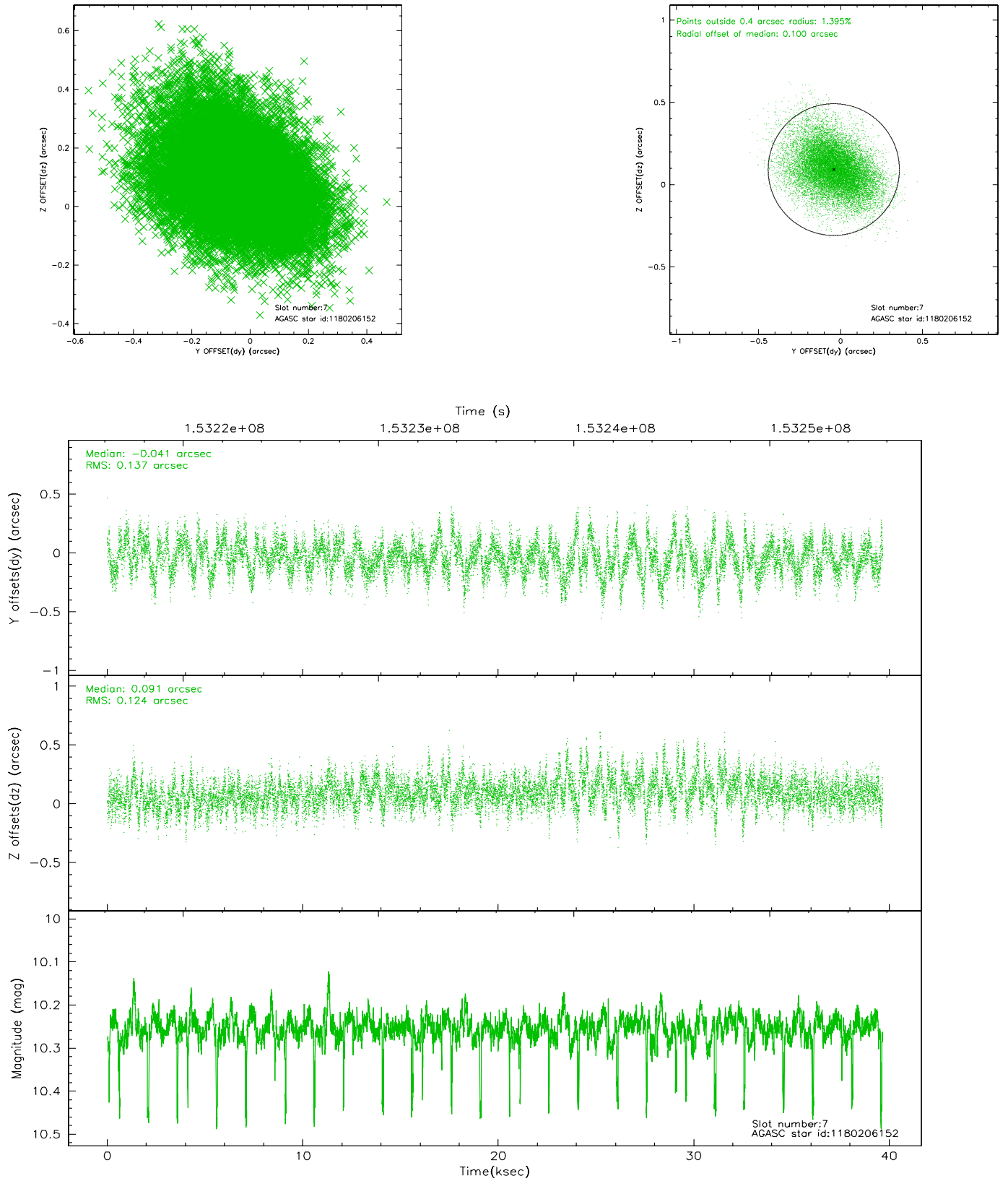
2.4.3 Slot 5



2.4.4 Slot 6

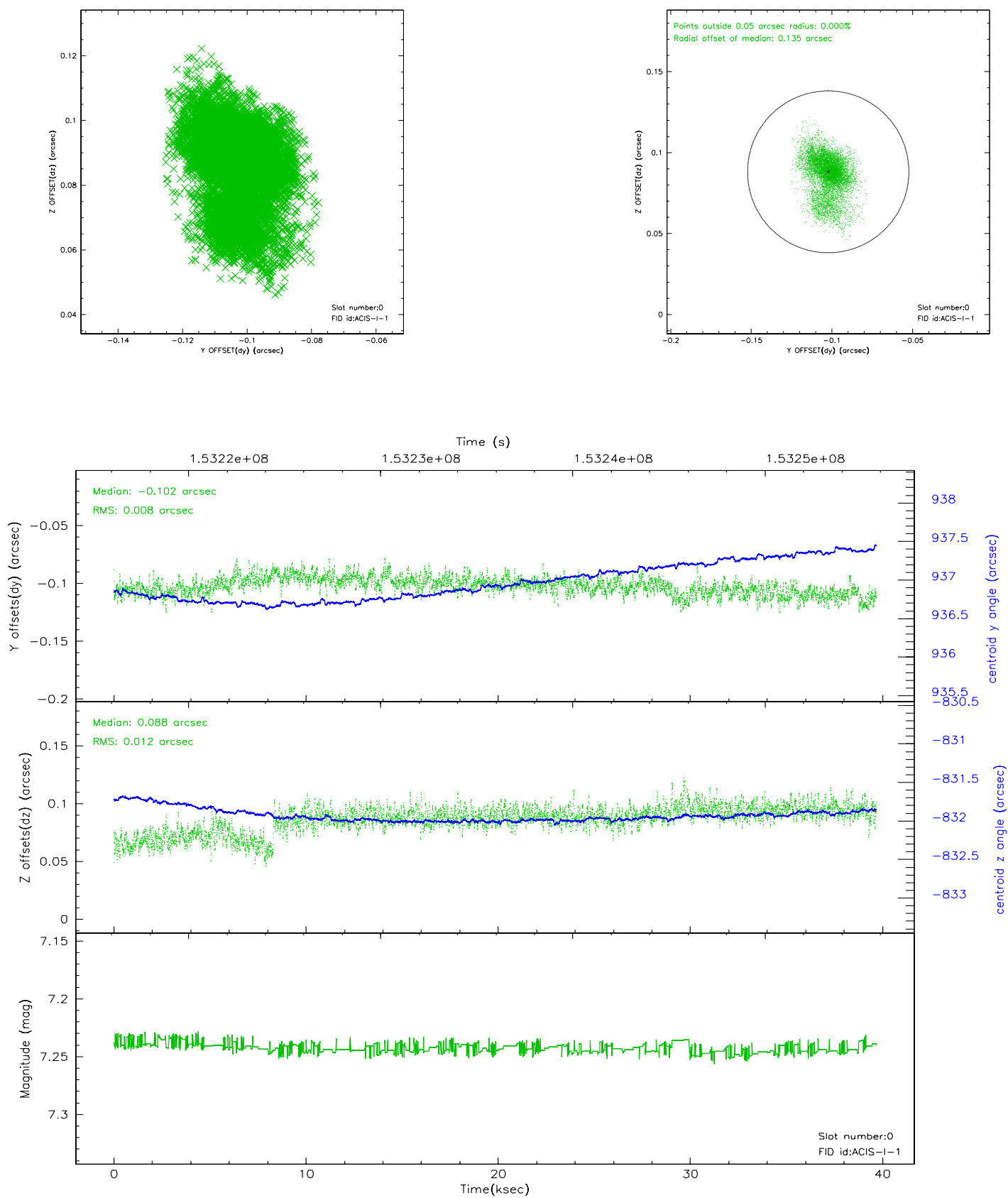


2.4.5 Slot 7

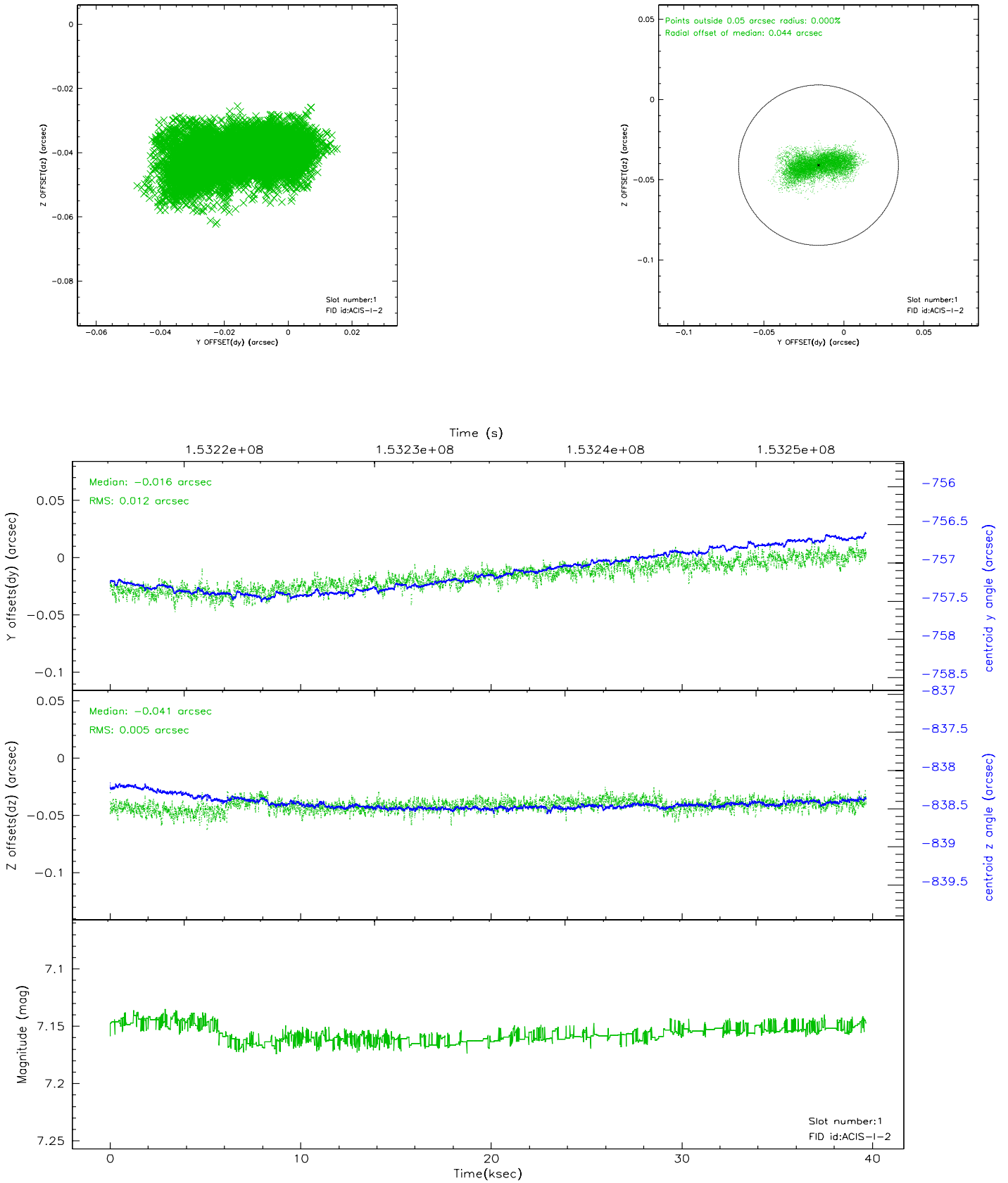


2.5 FID Slots

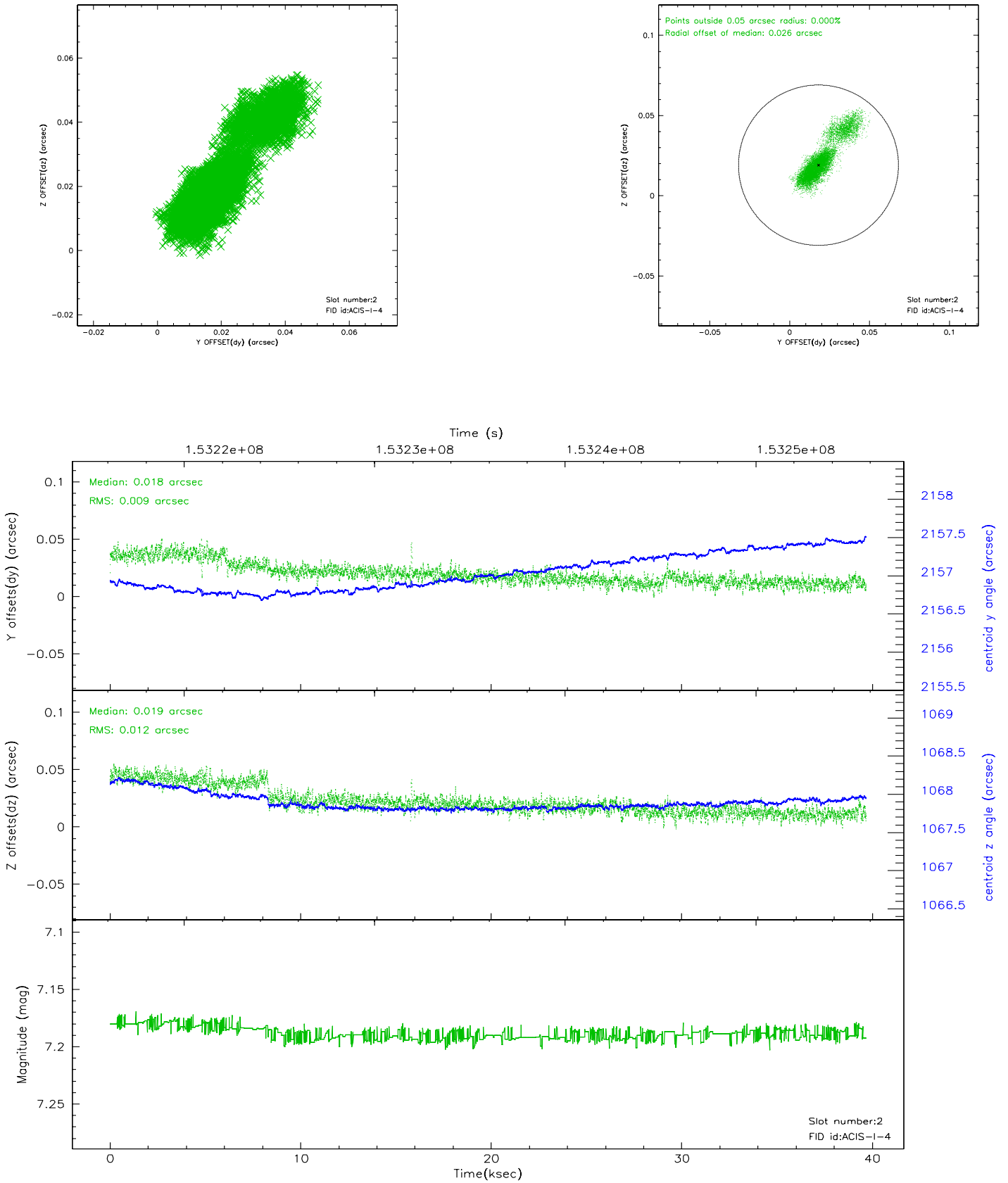
2.5.1 Slot 0



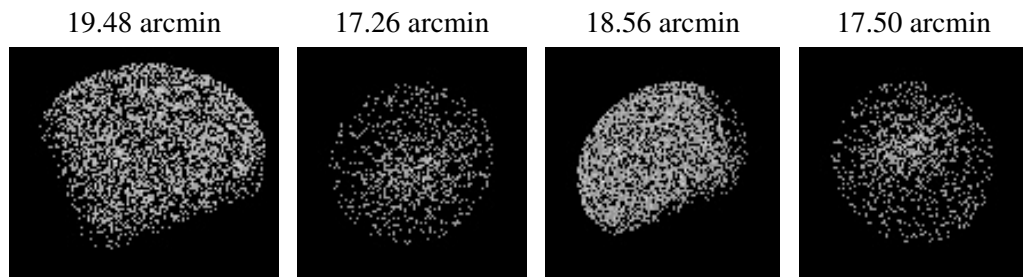
2.5.2 Slot 1



2.5.3 Slot 2



3 Point Sources



A Summary

A.1 Status

V&V Scientist	Beth Sundheim
V&V Date (YYYY-MM-DD)	2006.10.10
V&V Edition	1
V&V Disposition and Status	OK
V&V Charge Time	39.676

A.2 Comments