

V&V Reference Report

L2 ASCDS Version : 8.4.5

Observation 2794 - L2 Version 3
Chandra X-Ray Center

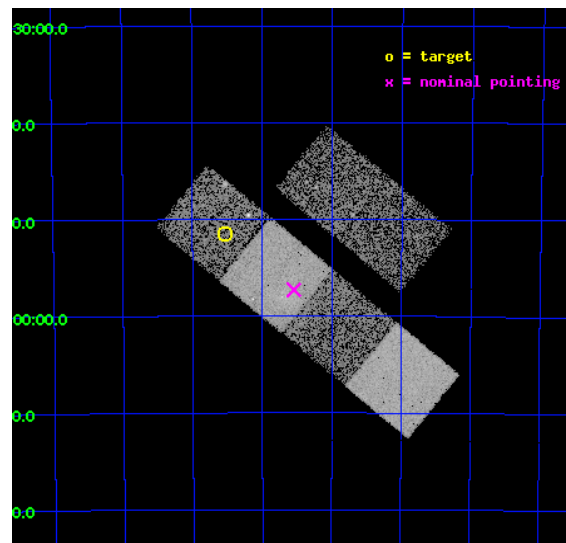
L2 Processing Date : Oct 14 2012

Contents

1	Front	2
2	OBI	3
2.1	OBI	3
2.1.1	Images	3
2.1.2	Bias	3
2.1.3	Parameters	4
2.1.4	Events	4
2.2	Compared Parameters	5
2.3	Aspect	6
2.4	Star Slots	9
2.4.1	Slot 3	9
2.4.2	Slot 4	10
2.4.3	Slot 5	11
2.4.4	Slot 6	12
2.4.5	Slot 7	13
2.5	FID Slots	14
2.5.1	Slot 0	14
2.5.2	Slot 1	15
2.5.3	Slot 2	16
A	Summary	17
A.1	Status	17
A.2	Comments	17

1 Front

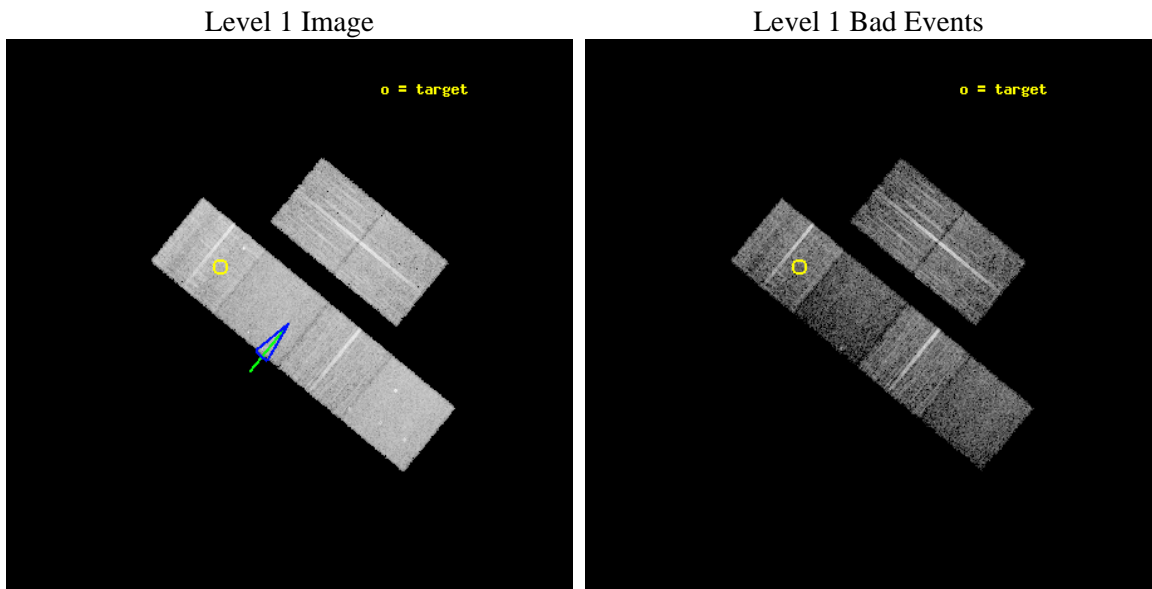
seq_num	500244	Sequence number
obs_id	2794	Observation id
title	IMAGING AND TIMING STUDIES OF THE VERY ENERGETIC PSR J1420-6048	Pr
observer	Prof. Roger Romani	Principal investigator
object	PSR J1420-6048	Source name
dtcycle	0	
cycle	P	events from which exps? Prim/Second/Both
ra_targ	214.883333	Observer's specified target RA [deg]
dec_targ	-60.858333	Observer's specified target Dec [deg]
ra_nom	214.63640119347	Nominal RA [deg]
dec_nom	-60.954781830285	Nominal Dec [deg]
roll_nom	219.45555076392	Nominal Roll [deg]
revision	3	Processing version of data
ontime	10059.837334961	Sum of GTIs [s]
livetime	9932.4536173186	Livetime [s]
ontime2	10060.042534947	Sum of GTIs [s]
ontime3	10059.878374934	Sum of GTIs [s]
ontime5	10059.960454941	Sum of GTIs [s]
ontime6	10059.919414937	Sum of GTIs [s]
ontime7	10060.001494944	Sum of GTIs [s]
ontime8	10059.837334961	Sum of GTIs [s]
l2events	74002	Number of level 2 events



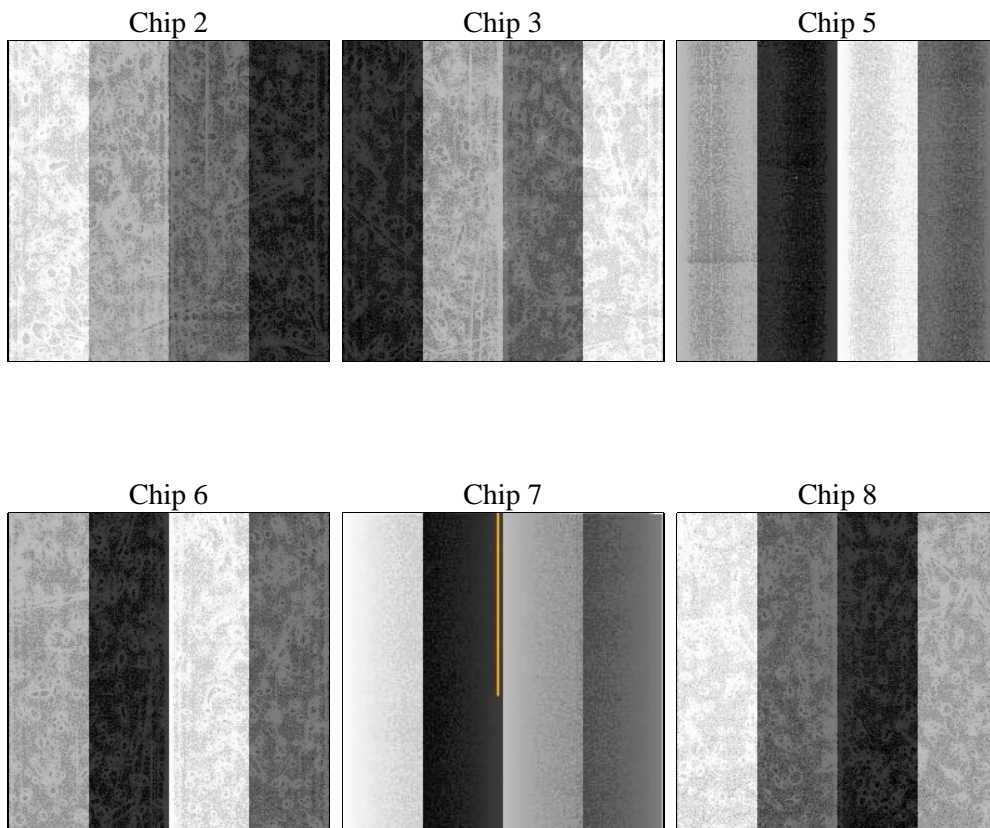
2 OBI

2.1 OBI

2.1.1 Images



2.1.2 Bias



2.1.3 Parameters

obi_num	0	Obi number	sched_exp_time	10000.000000	[s] Scheduled observation exposure time
ascdsver	8.4.5	Processing system revision	ontime	10059.837334961	Sum of GTIs [s]
caldbver	4.5.2	 	ontime2	10060.042534947	Sum of GTIs [s]
date	2012-10-14T19:15:25	Date and time of file creation	ontime3	10059.878374934	Sum of GTIs [s]
revision	3	Processing version of data	ontime5	10059.960454941	Sum of GTIs [s]
			ontime6	10059.919414937	Sum of GTIs [s]
			ontime7	10060.001494944	Sum of GTIs [s]
			ontime8	10059.837334961	Sum of GTIs [s]
			l1events	318517	Number of level 1 events

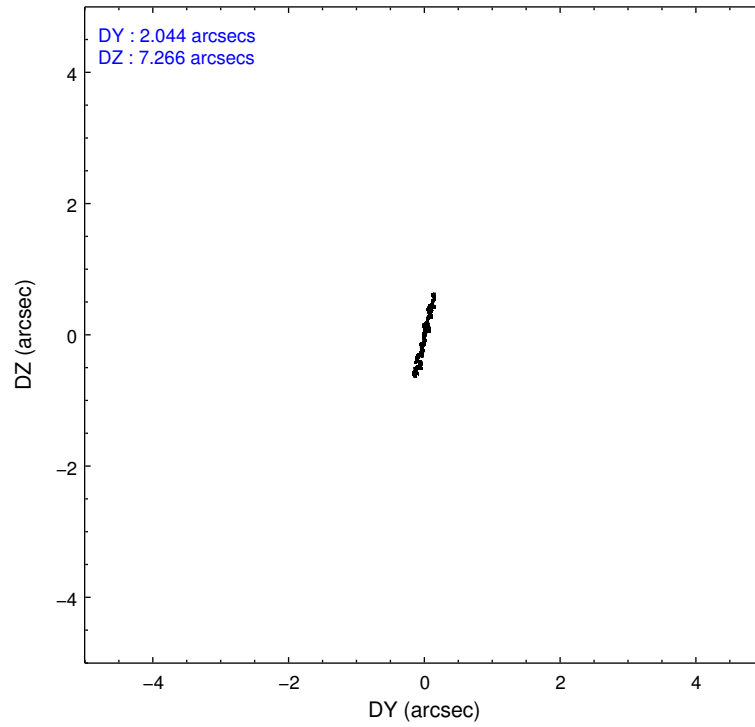
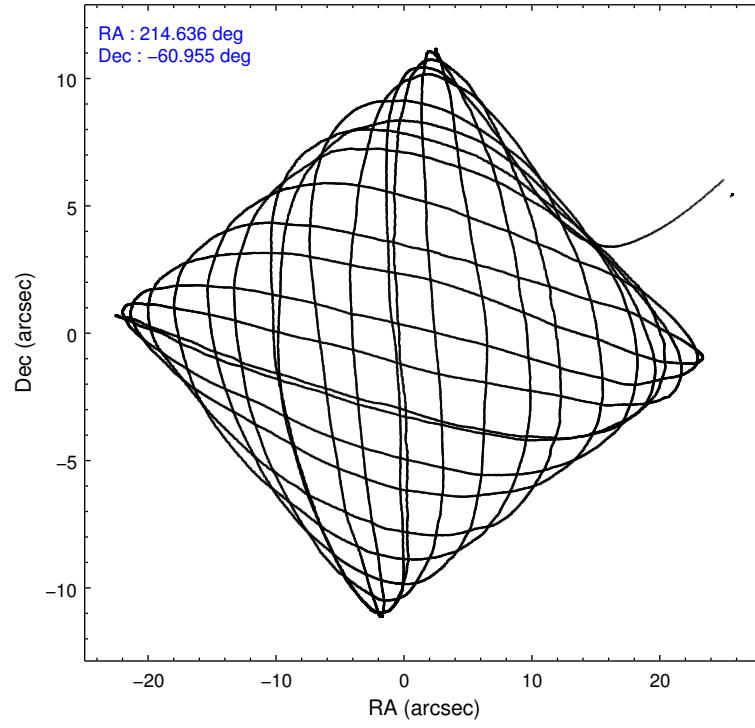
2.1.4 Events

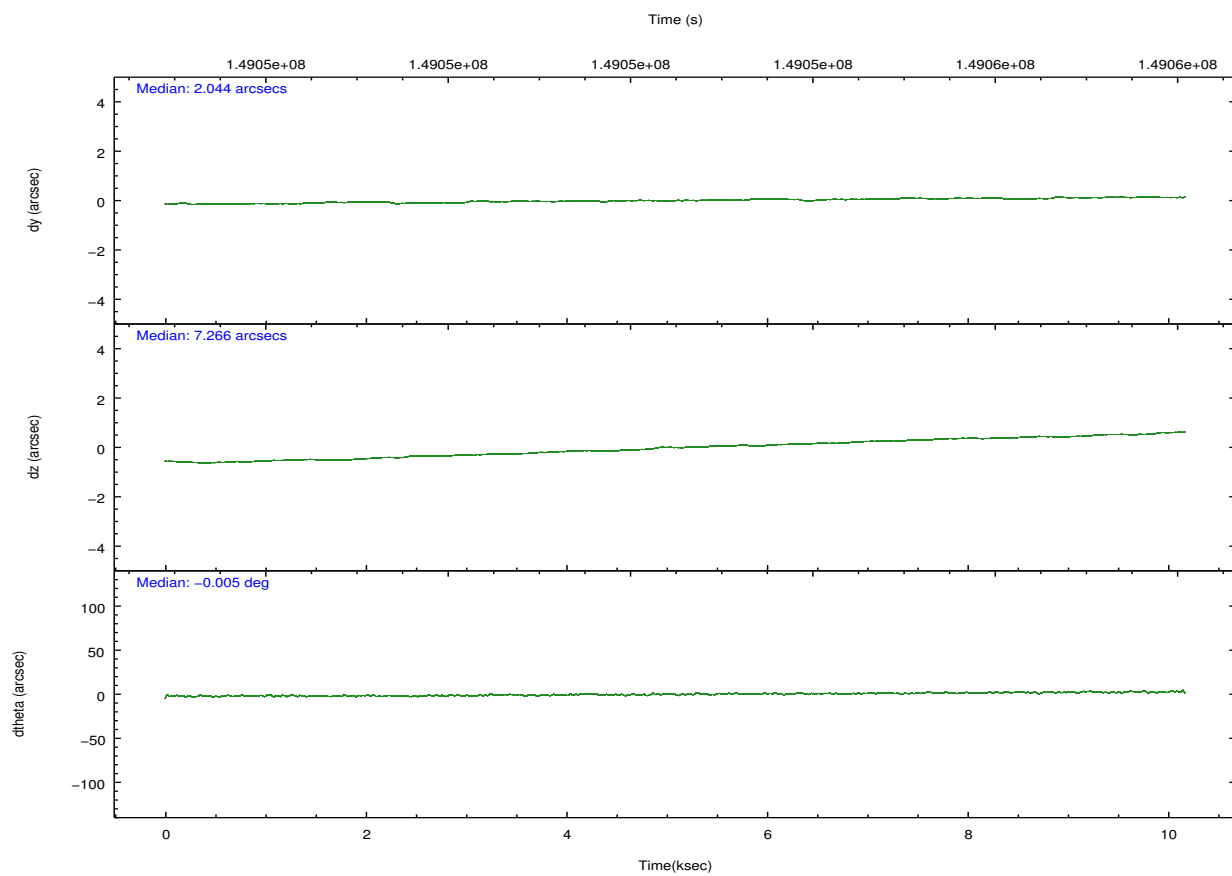
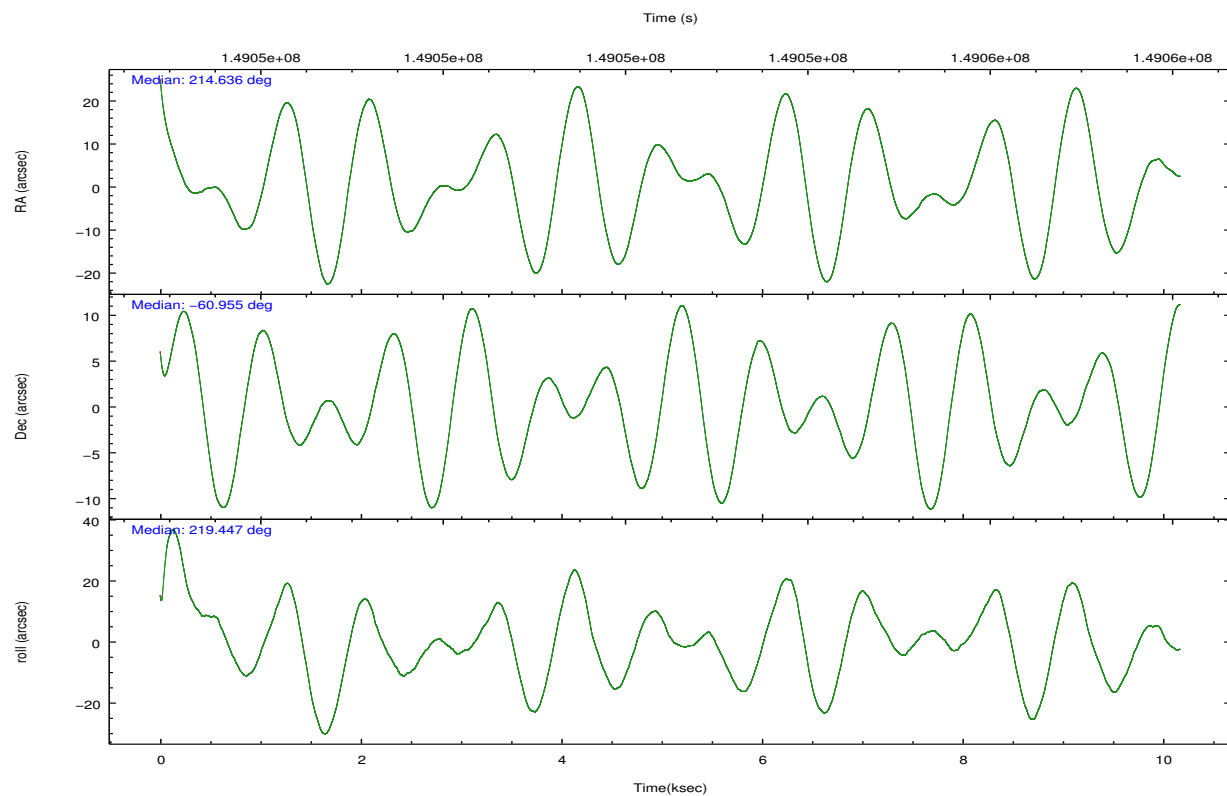
	ccd 2	ccd 3	ccd 5	ccd 6	ccd 7	ccd 8		ccd 2	ccd 3	ccd 5	ccd 6	ccd 7	ccd 8
level 1 events	50626	49524	56903	50060	48784	62620	grade 0 events	2139	2179	3180	2749	3061	5037
rejected events	45383	44474	26833	43926	22912	47797		4%	4%	5%	5%	6%	8%
rejected %	89%	89%	47%	87%	46%	76%	grade 1 events	34	17	66	33	45	33
								0%	0%	0%	0%	0%	0%
							grade 2 events	1186	942	8602	1210	5573	3057
								2%	1%	15%	2%	11%	4%
							grade 3 events	529	549	1599	580	2504	1650
								1%	1%	2%	1%	5%	2%
							grade 4 events	550	551	1531	582	2674	1437
								1%	1%	2%	1%	5%	2%
							grade 5 events	1379	1461	4857	1565	4811	2405
								2%	2%	8%	3%	9%	3%
							grade 6 events	841	832	15171	1018	12069	3644
								1%	1%	26%	2%	24%	5%
							grade 7 events	43968	42993	21897	42323	18047	45357
								86%	86%	38%	84%	36%	72%

2.2 Compared Parameters

Parameter	Planned	Actual	Parameter	Planned	Actual
Instrument	ACIS	ACIS	Obspar format version number	7	7
Detector	ACIS-235678	ACIS-235678	Obspar file type	PREDICTED	ACTUAL
Grating	NONE	NONE	Obspar update status	NONE	UPDATED
Data mode	VFAINT	VFAINT	Number of optional ACIS chips dropped	0	0
Observation mode	POINTING	POINTING	On-chip summing requested	N	N
[deg] Pointing RA	214.655356	214.6364011934743	Subarray requested	NONE	NONE
[deg] Pointing Dec	-60.929191	-60.95478183028509	Alternating exposures requested	N	N
[deg] Pointing Roll	219.315536	219.4555507639159	[s] Primary exposure time	0.000000	3.2
[deg] Roll angle	220.000000	220.000000			
[deg] Roll tolerance	10.000000	10.000000			
Roll constraint allows 180D rotation	N	N			
[mm] SIM focus pos	-0.684267	-0.6828225247311905			
[mm] SIM defocus	0	0.001444936568705701			
[mm] SIM translation stage pos	-190.132523	-190.1400660498719			
[mm] SIM translation stage offset	0	0.00754346686406393			
[s] Observation start time (MET)	149047570.184000	149046560.77958			
Observation start date	2002-09-22T02:05:06	2002-09-22T01:49:20			
[s] Observation end time (MET)	149057570.184000	149058233.99257			
Observation end date	2002-09-22T04:51:46	2002-09-22T05:03:53			
Read mode	TIMED	TIMED			

2.3 Aspect



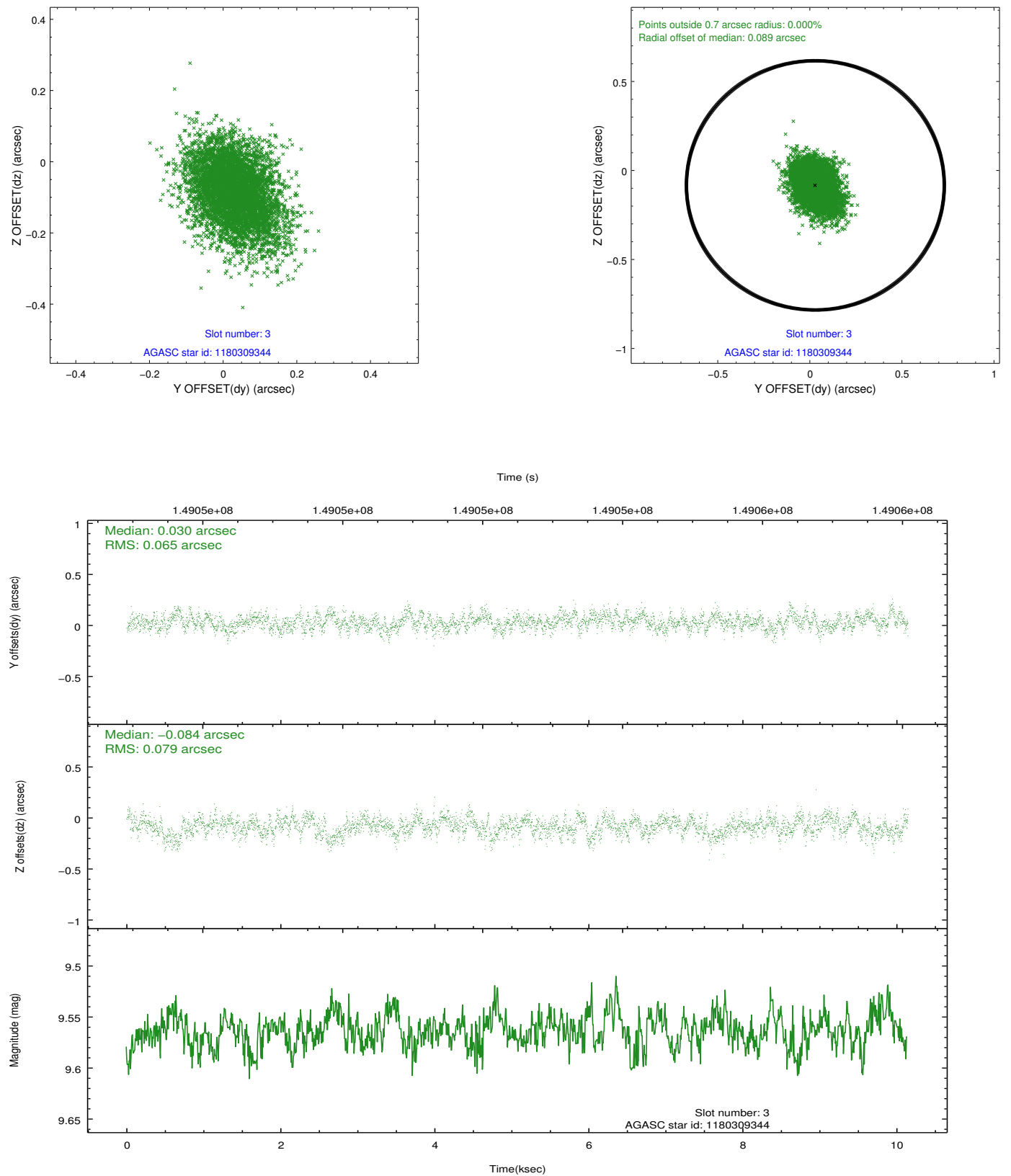


Slot Statistics

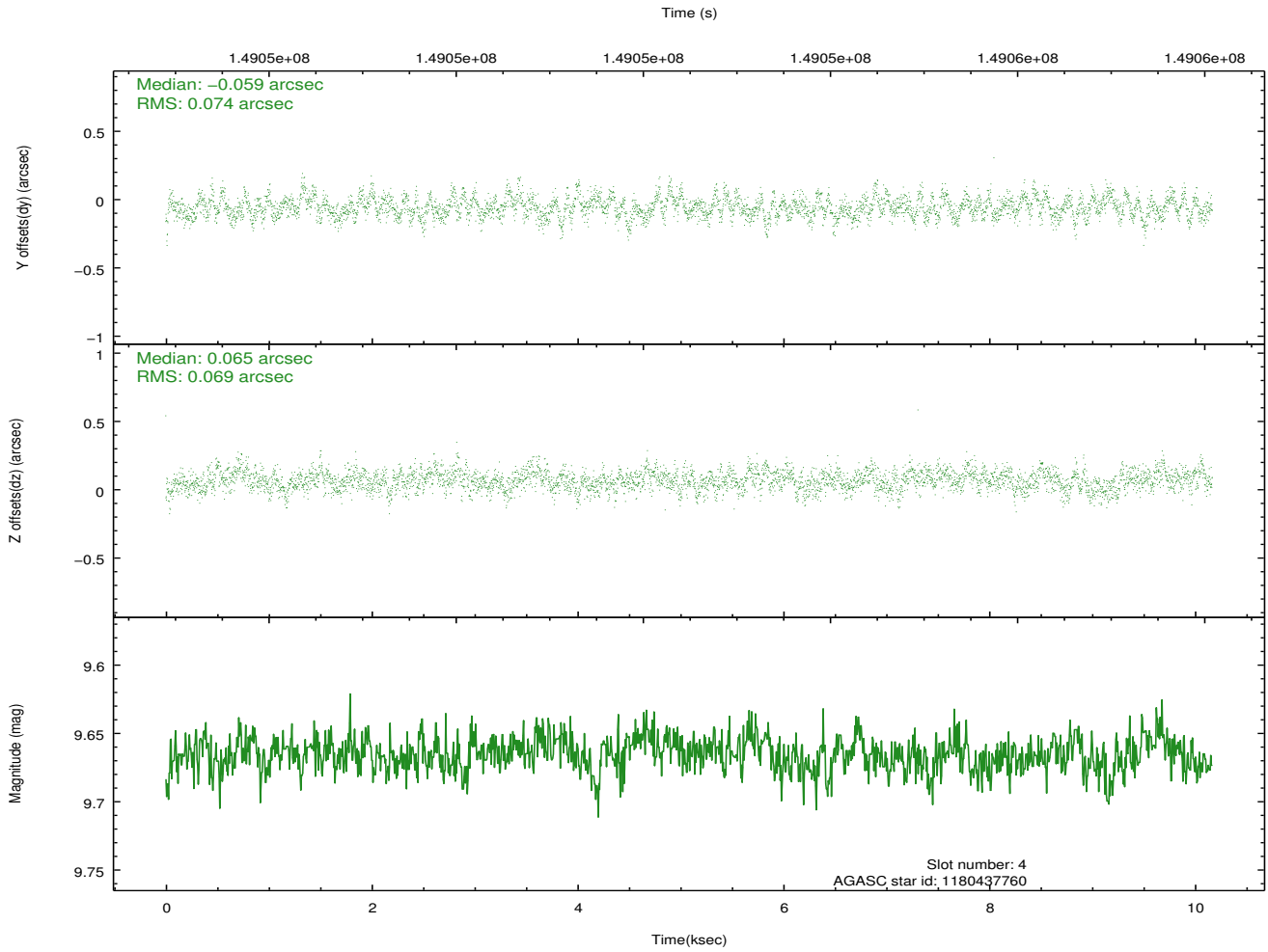
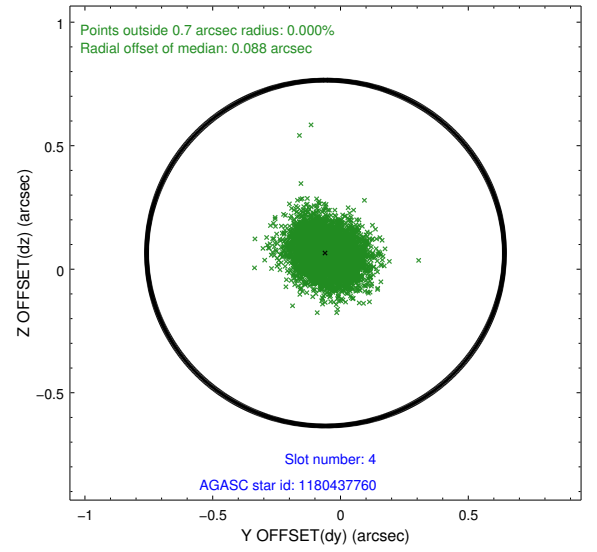
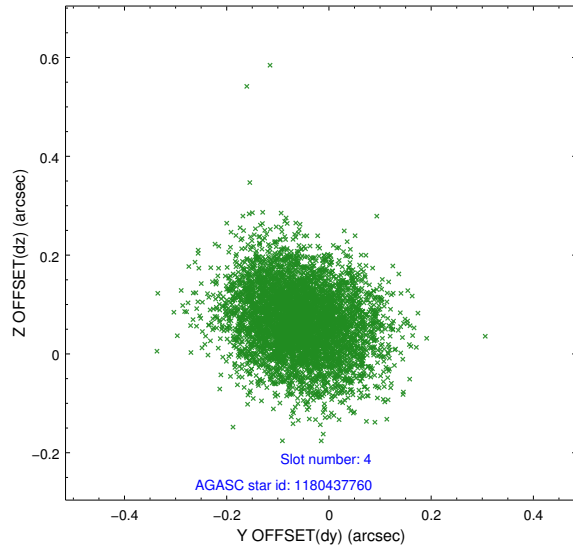
slot	status	id	mag	n_pts	med_dy	med_dz	dr1	dr2	ra	dec	mean_y	mean_z
0	FID	ACIS-S-1	7.19	2481	0.077	0.002	0.011	0.017	0.000000	0.000000	941.44	-1724.04
1	FID	ACIS-S-3	7.36	2480	-0.129	-0.046	0.009	0.015	0.000000	0.000000	58.82	-1858.21
2	FID	ACIS-S-4	7.20	2481	0.030	0.052	0.013	0.023	0.000000	0.000000	2158.74	179.58
3	GUIDE	1180309344	9.56	4871	0.030	-0.084	0.108	0.178	213.429296	-60.678040	1112.20	-2052.52
4	GUIDE	1180437760	9.67	4950	-0.059	0.065	0.109	0.174	215.145122	-61.436357	506.27	1949.59
5	GUIDE	1180465208	8.72	4961	-0.018	-0.032	0.071	0.115	215.460543	-60.837299	-1297.13	646.61
6	GUIDE	1180312440	9.74	4957	0.027	-0.041	0.129	0.206	213.436227	-60.574922	872.60	-2336.37
7	GUIDE	1180470064	9.79	4958	0.018	0.090	0.108	0.178	216.011297	-60.925220	-1829.01	1510.92

2.4 Star Slots

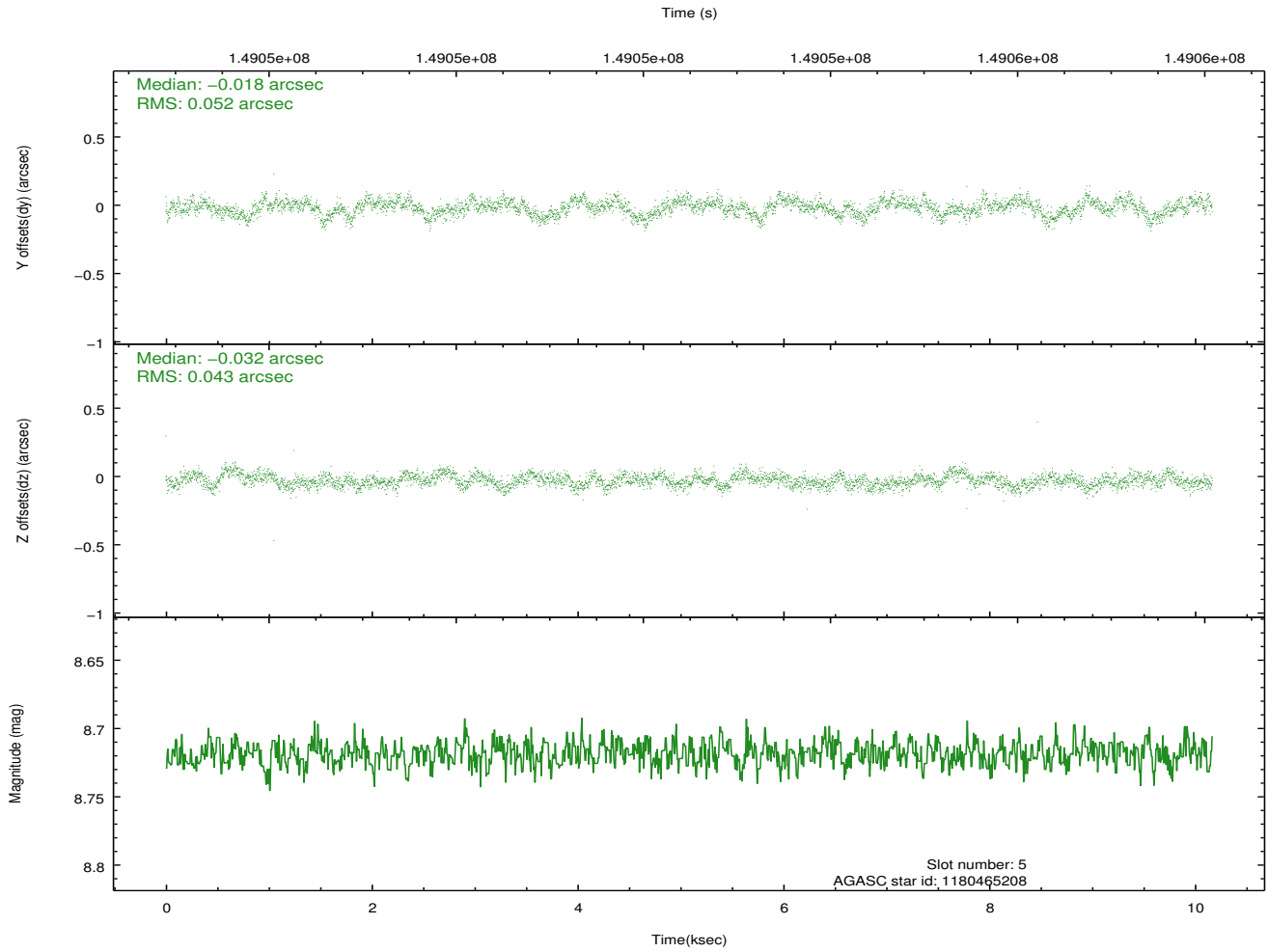
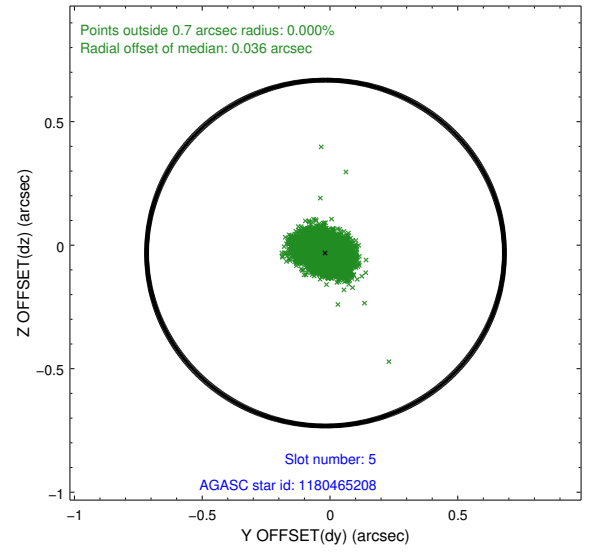
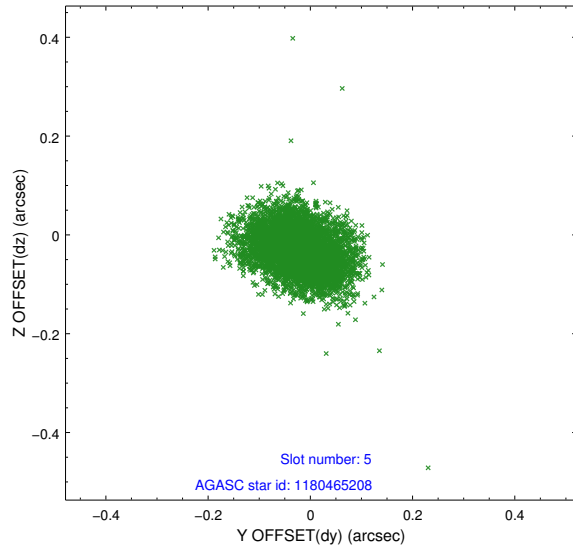
2.4.1 Slot 3



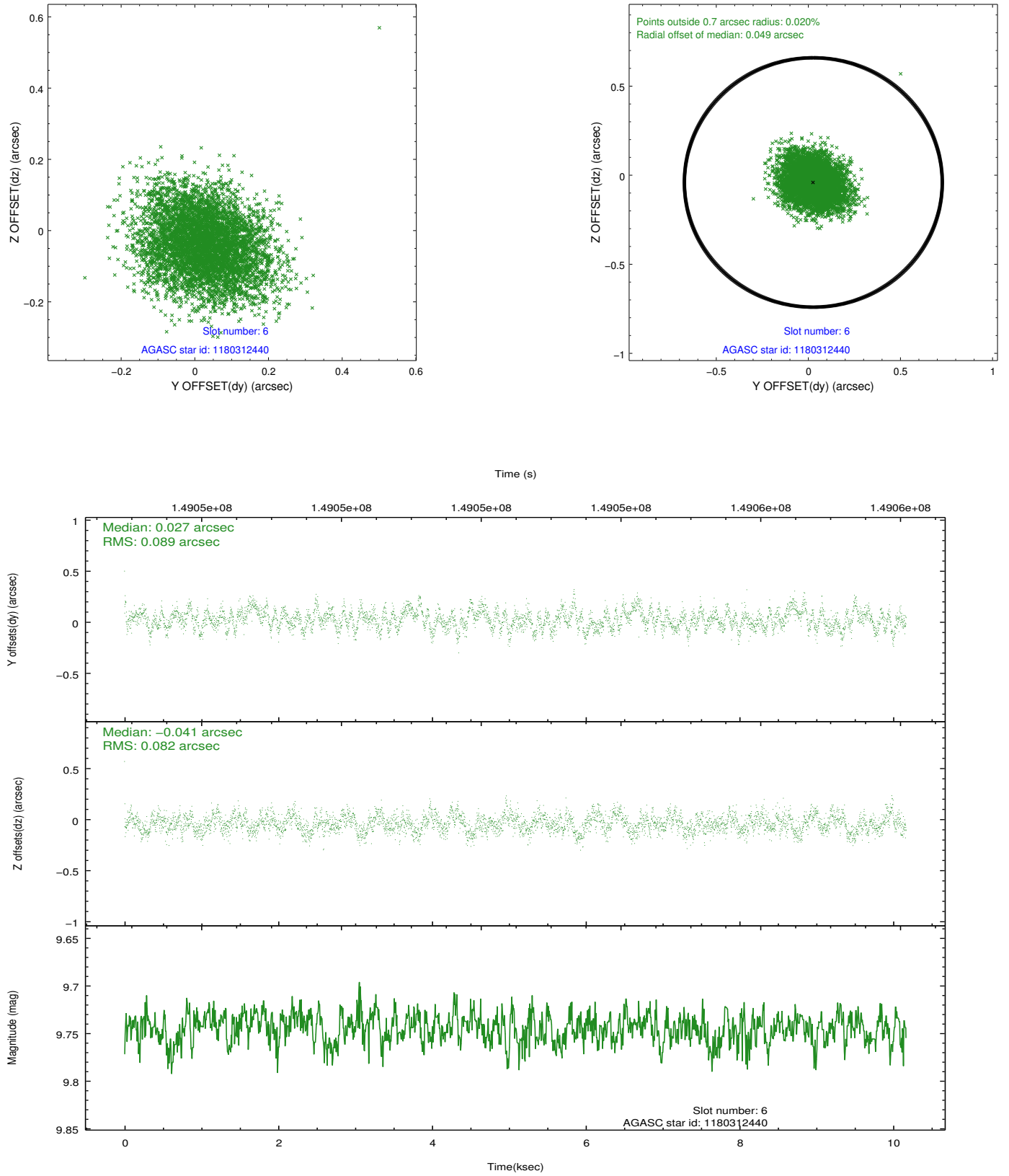
2.4.2 Slot 4



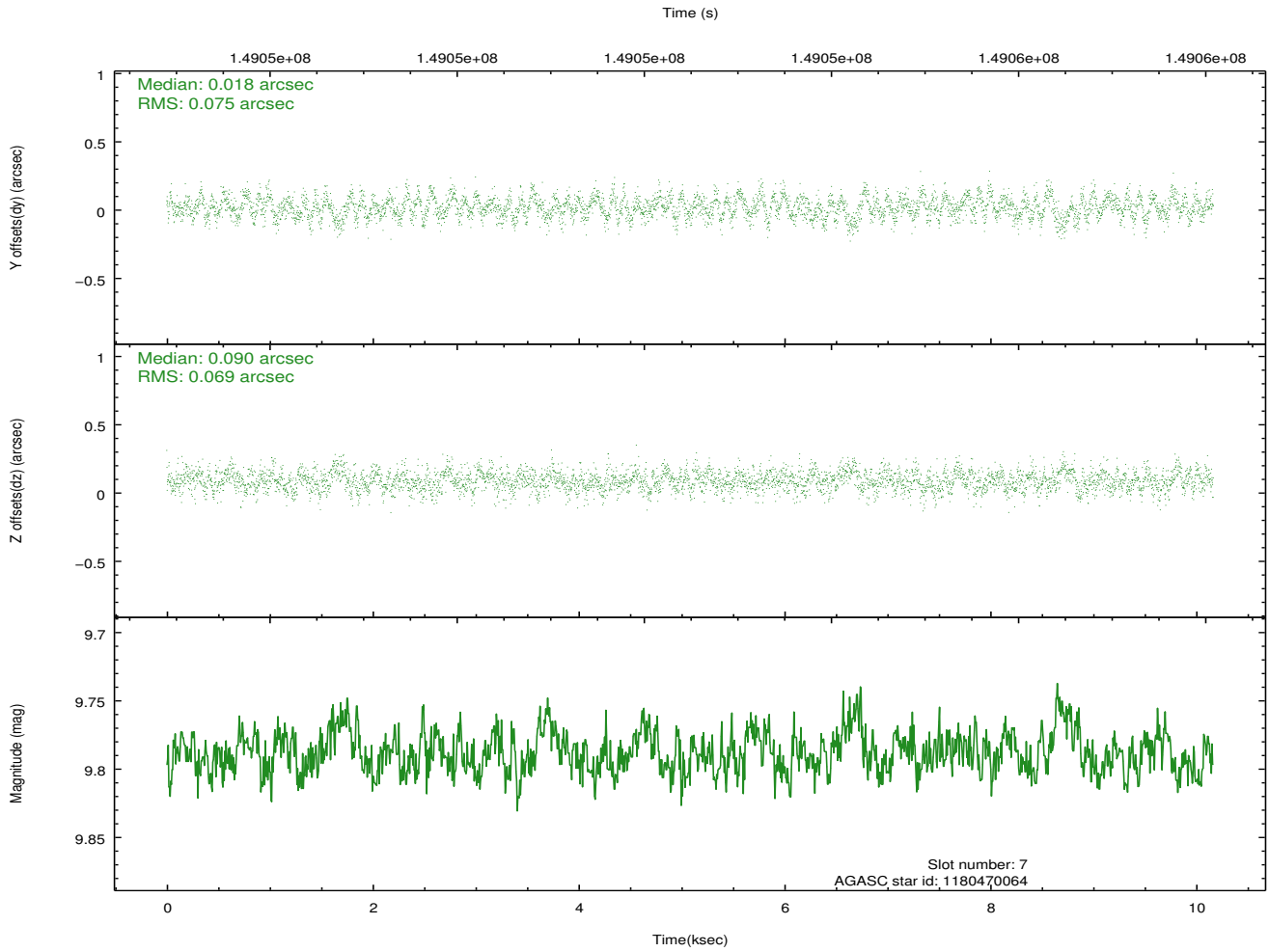
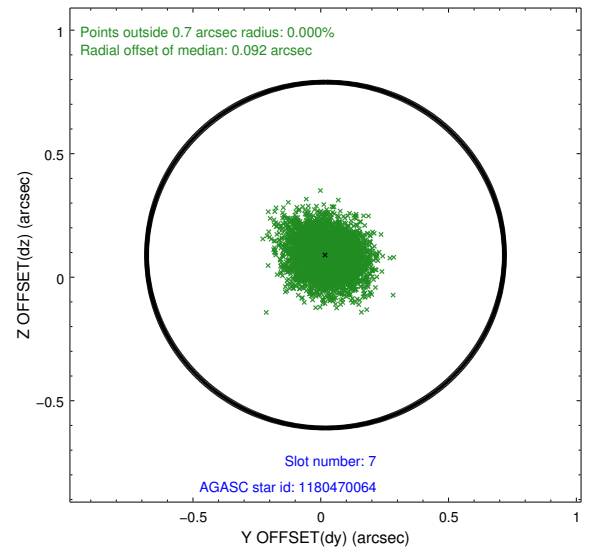
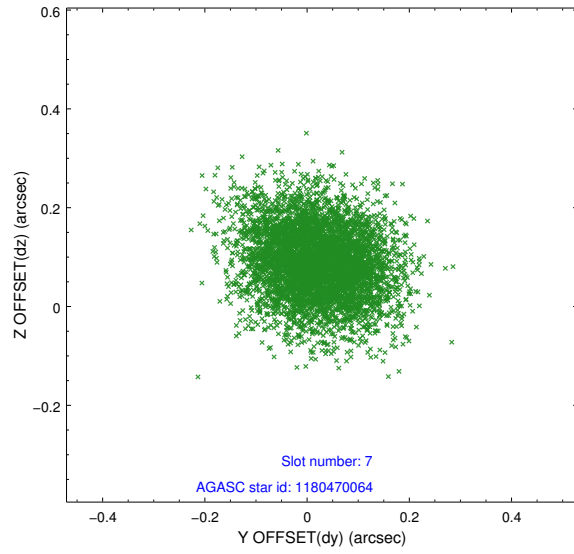
2.4.3 Slot 5



2.4.4 Slot 6

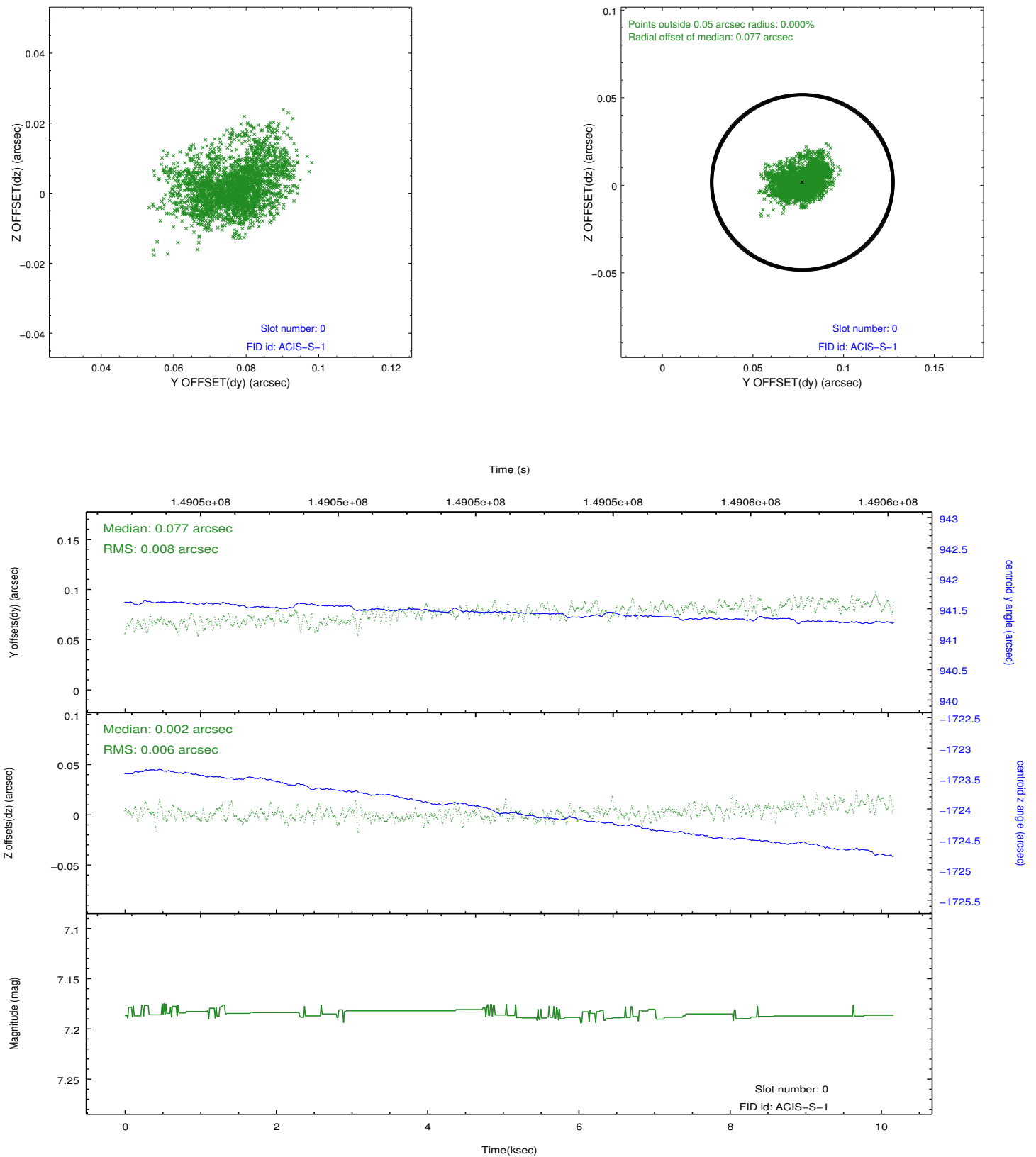


2.4.5 Slot 7

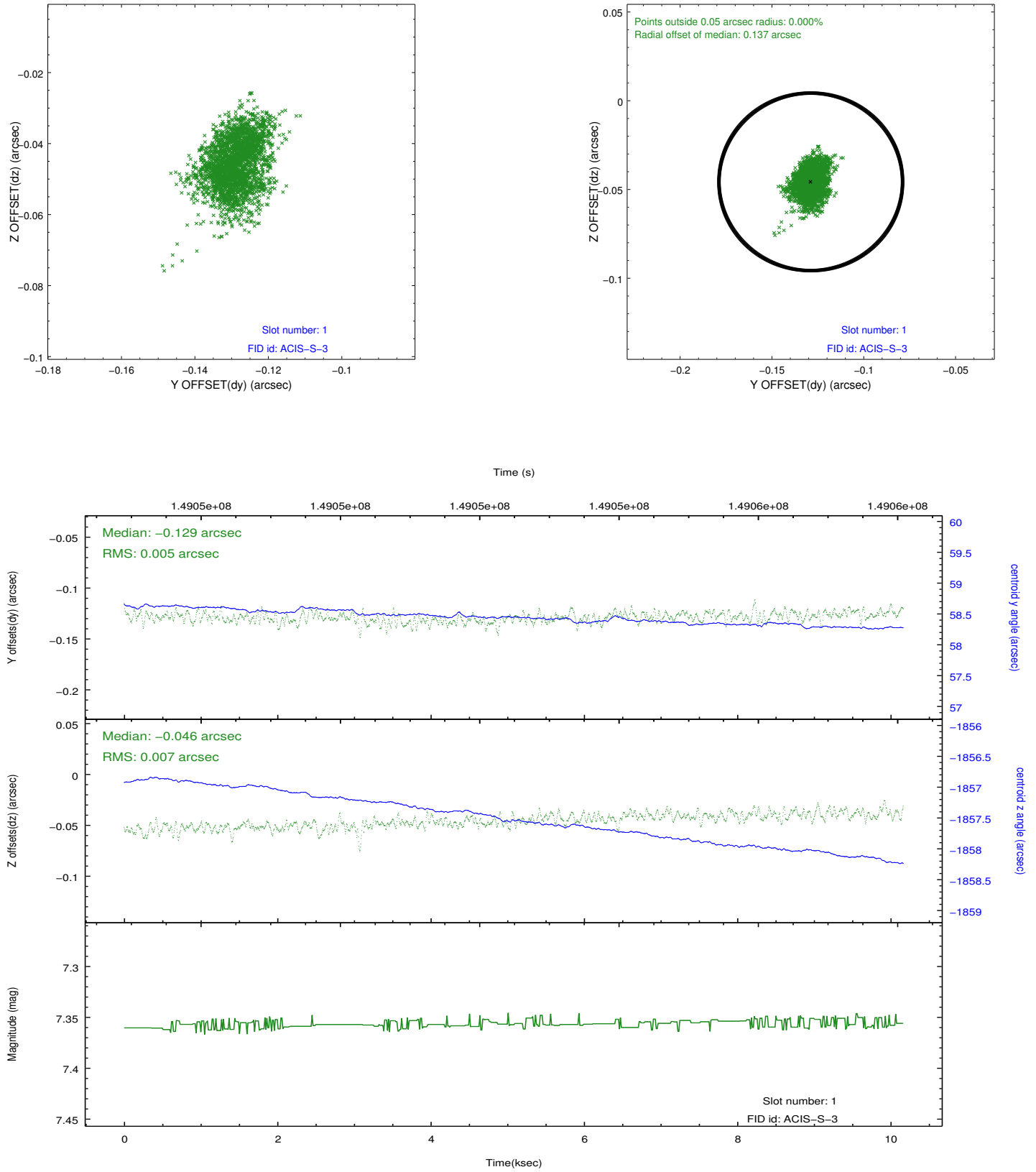


2.5 FID Slots

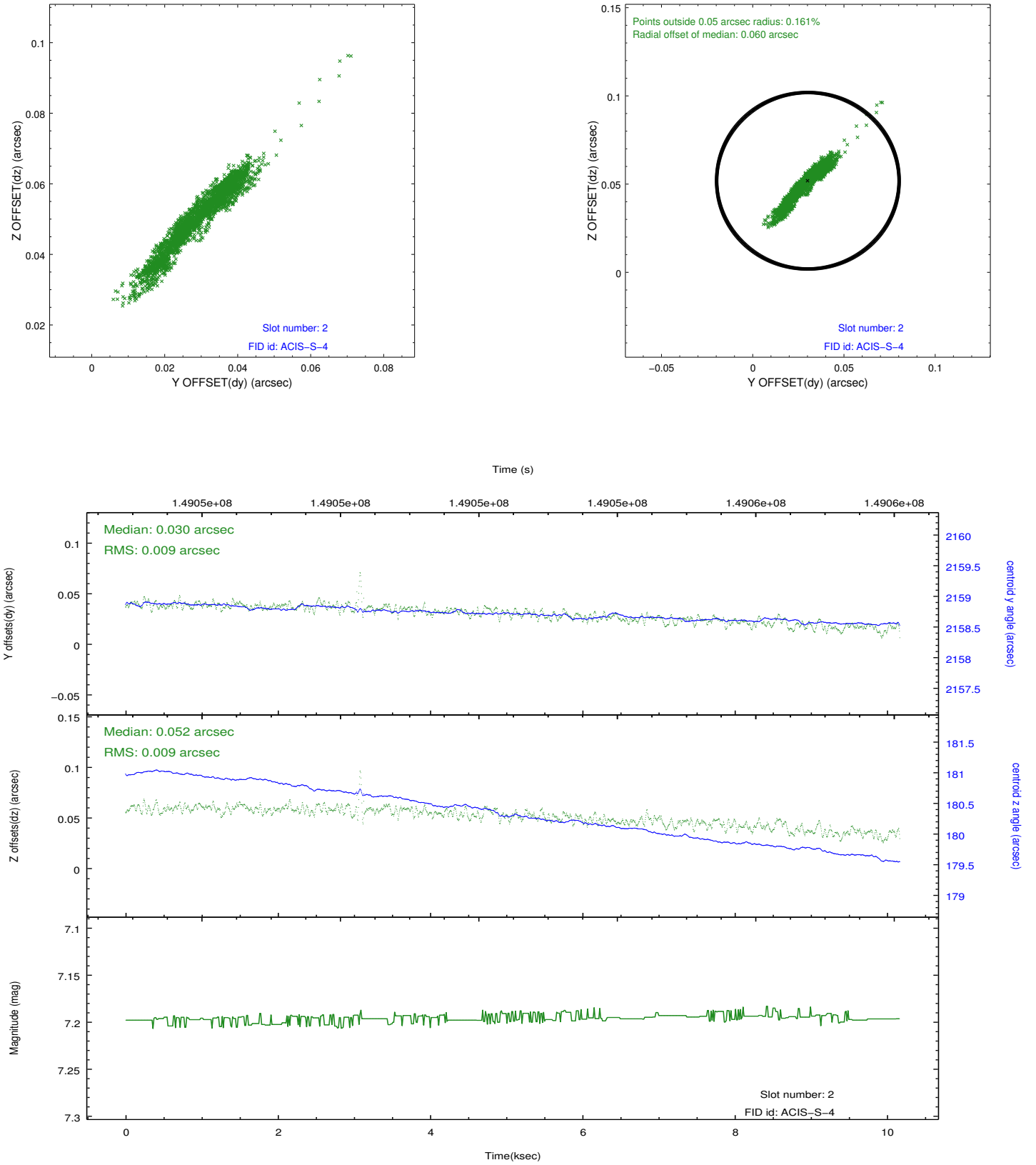
2.5.1 Slot 0



2.5.2 Slot 1



2.5.3 Slot 2



A Summary

A.1 Status

V&V Scientist	Jen Lauer
V&V Date (YYYY-MM-DD)	2012.10.24
V&V Edition	1
V&V Disposition and Status	OK
V&V Charge Time	10.06

A.2 Comments

Roll constraint met.