

# V&V Reference Report

## L2 ASCDS Version : 7.6.9

Observation 2794 - L2 Version 001  
Chandra X-Ray Center

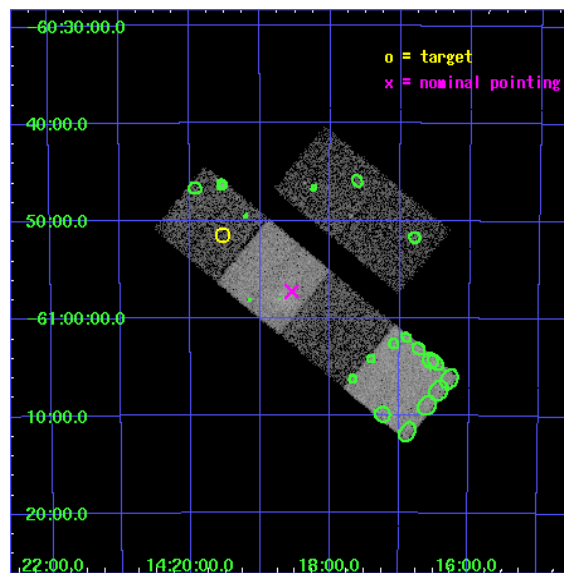
L2 Processing Date : Oct 4 2006

## Contents

<b>1</b>	<b>Front</b>	<b>2</b>
<b>2</b>	<b>OBI</b>	<b>3</b>
2.1	OBI . . . . .	3
2.1.1	Images . . . . .	3
2.1.2	Bias . . . . .	3
2.1.3	Parameters . . . . .	4
2.1.4	Events . . . . .	4
2.2	Compared Parameters . . . . .	5
2.3	Aspect . . . . .	6
2.4	Star Slots . . . . .	9
2.4.1	Slot 3 . . . . .	9
2.4.2	Slot 4 . . . . .	10
2.4.3	Slot 5 . . . . .	11
2.4.4	Slot 6 . . . . .	12
2.4.5	Slot 7 . . . . .	13
2.5	FID Slots . . . . .	14
2.5.1	Slot 0 . . . . .	14
2.5.2	Slot 1 . . . . .	15
2.5.3	Slot 2 . . . . .	16
<b>3</b>	<b>Point Sources</b>	<b>17</b>
<b>A</b>	<b>Summary</b>	<b>18</b>
A.1	Status . . . . .	18
A.2	Comments . . . . .	18

# 1 Front

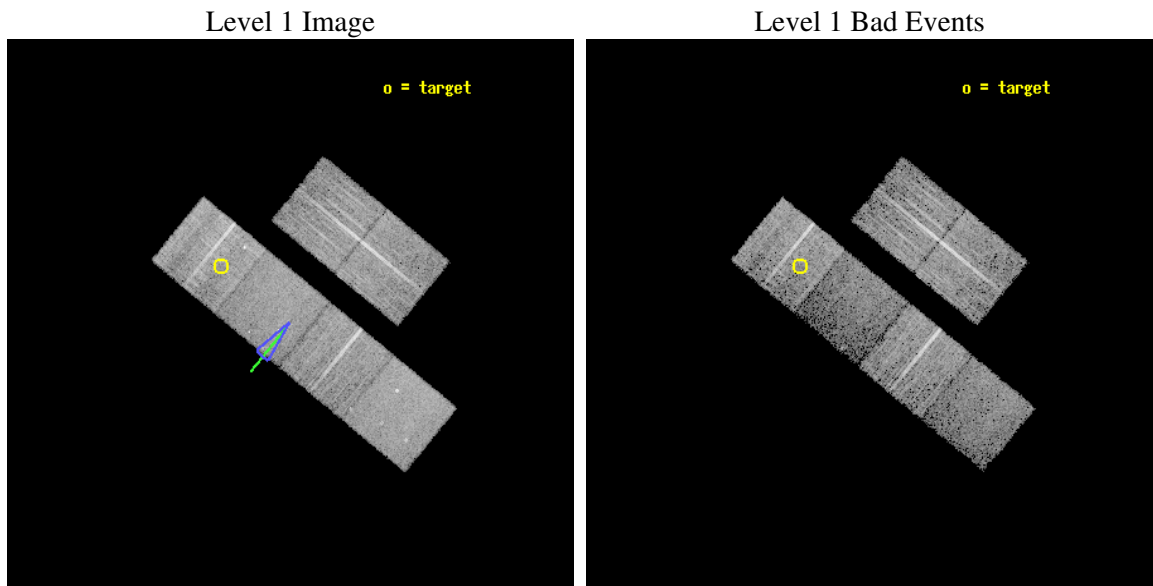
seq_num	500244
obs_id	2794
title	IMAGING AND TIMING STUDIES OF THE VERY ENERGETIC PSR J1420-6048
observer	Prof. Roger Romani
object	PSR J1420-6048
dtcycle	0
cycle	P
ra_targ	214.883333
dec_targ	-60.858333
ra_nom	214.63640121718
dec_nom	-60.954781825126
roll_nom	219.45555077926
revision	2
ontime	10060.799962521
livetime	9933.4040555087
ontime2	10060.799962521
ontime3	10060.799962521
ontime5	10060.799962521
ontime6	10060.799962521
ontime7	10060.799962521
ontime8	10060.799962521
l2events	71546



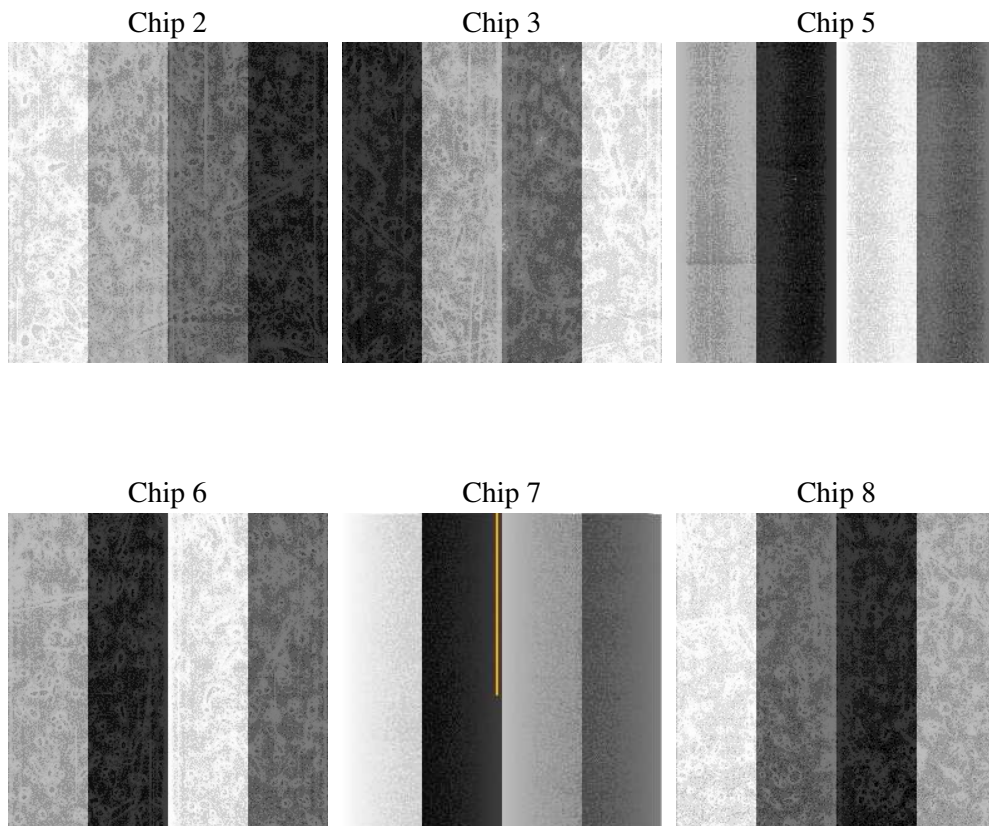
## 2 OBI

### 2.1 OBI

#### 2.1.1 Images



#### 2.1.2 Bias



### 2.1.3 Parameters

obi_num	0
ascdsver	7.6.9
caldbver	3.2.3
date	2006-10-04T15:02:03
revision	2

sched_exp_time	10000.000000
ontime	10063.306926638
ontime2	10063.306926638
ontime3	10063.306926638
ontime5	10063.306956559
ontime6	10063.306926638
ontime7	10063.306926638
ontime8	10063.306926638
l1events	318517

### 2.1.4 Events

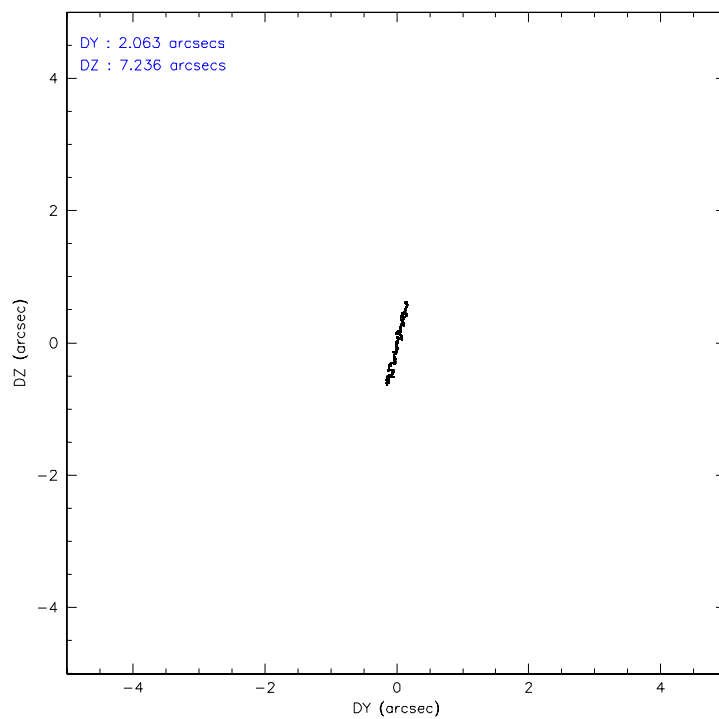
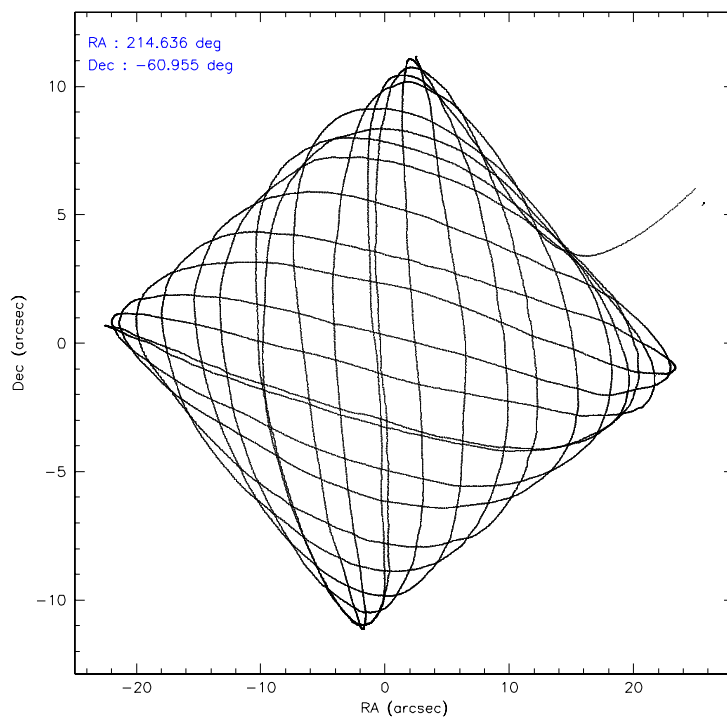
	ccd 2	ccd 3	ccd 5	ccd 6	ccd 7	ccd 8
level 1 events	50626	49524	56903	50060	48784	62620
rejected events	45383	44474	27908	43927	24366	47797
rejected %	89%	89%	49%	87%	49%	76%

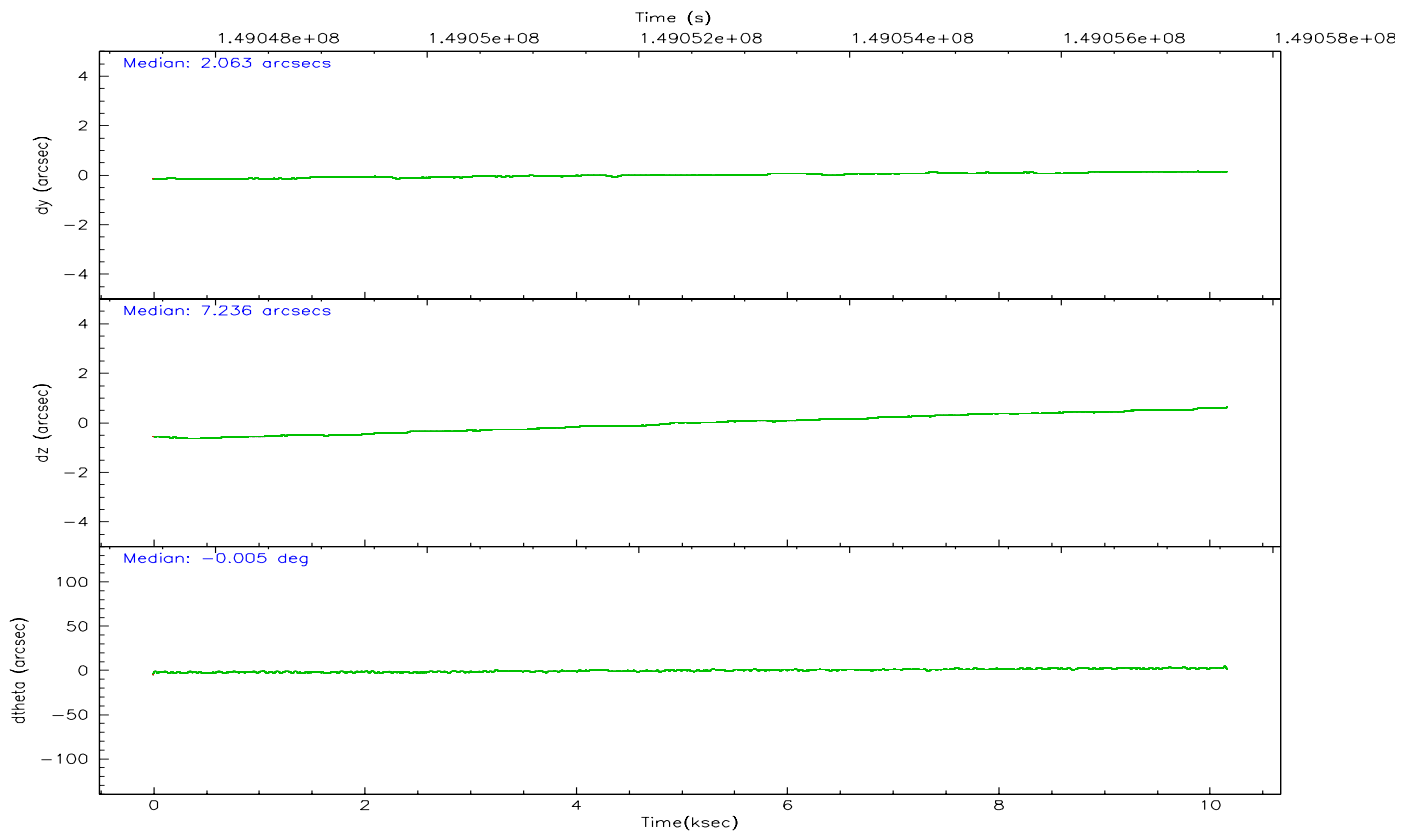
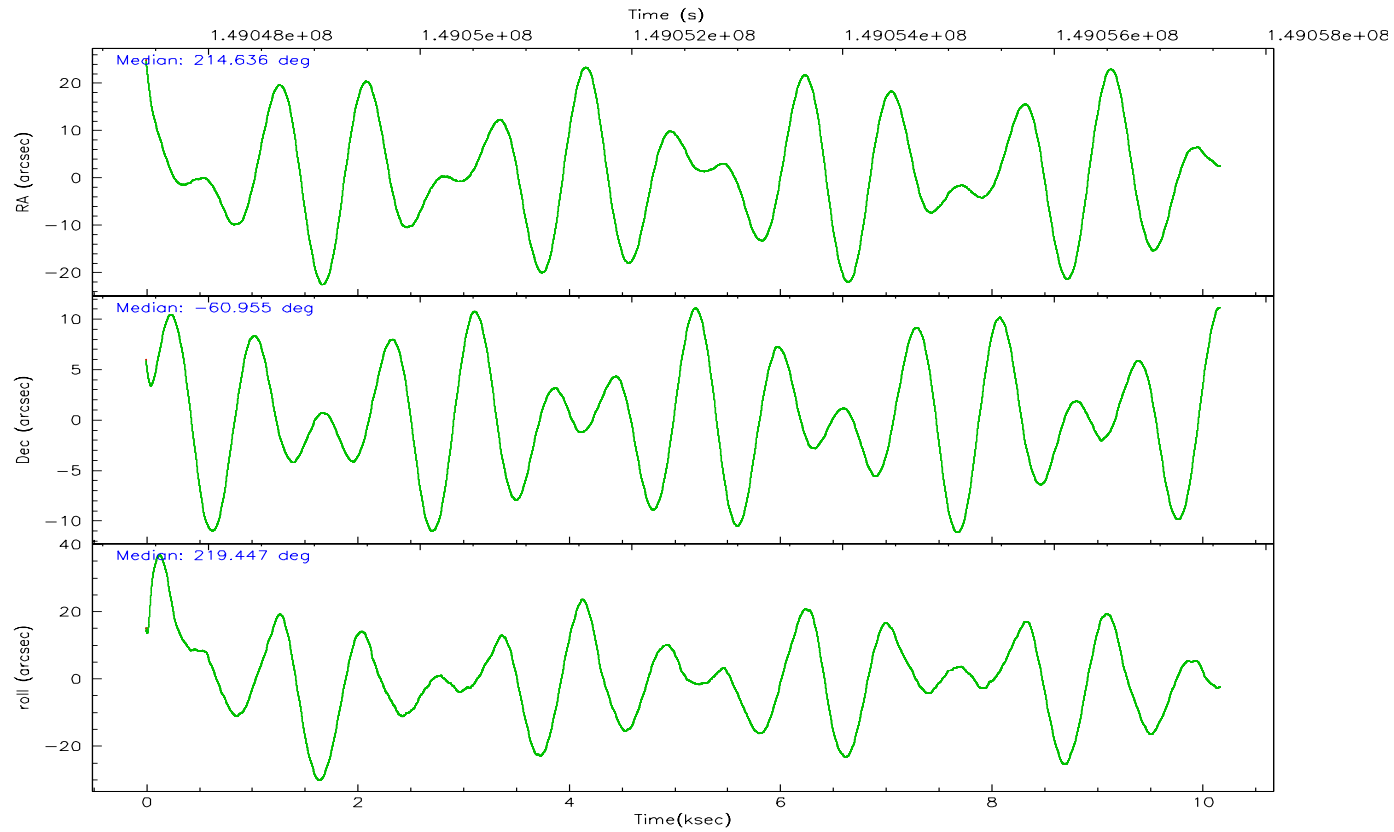
	ccd 2	ccd 3	ccd 5	ccd 6	ccd 7	ccd 8
grade 0 events	2139	2179	2189	2749	2135	5036
	4%	4%	3%	5%	4%	8%
grade 1 events	34	17	33	33	34	33
	0%	0%	0%	0%	0%	0%
grade 2 events	1186	942	9088	1210	6327	3058
	2%	1%	15%	2%	12%	4%
grade 3 events	529	549	878	580	1626	1650
	1%	1%	1%	1%	3%	2%
grade 4 events	550	550	811	582	1738	1437
	1%	1%	1%	1%	3%	2%
grade 5 events	1379	1461	3192	1565	3556	2405
	2%	2%	5%	3%	7%	3%
grade 6 events	841	833	16042	1017	12600	3644
	1%	1%	28%	2%	25%	5%
grade 7 events	43968	42993	24670	42324	20768	45357
	86%	86%	43%	84%	42%	72%

## 2.2 Compared Parameters

Parameter	Planned	Actual	Parameter	Planned	Actual
Instrument	ACIS	ACIS	Obspar format version number	6	6
Detector	ACIS-235678	ACIS-235678	Obspar file type	PREDICTED	ACTUAL
Grating	NONE	NONE	Obspar update status	NONE	UPDATED
Data mode	VFAINT	VFAINT	Number of optional ACIS chips dropped	0	0
Observation mode	POINTING	POINTING	On-chip summing requested	N	N
Pointing RA	214.655356	214.6364012171752	Subarray requested	NONE	NONE
Pointing Dec	-60.929191	-60.95478182512584	Alternating exposures requested	N	N
Pointing Roll	219.315536	219.4555507792569	Primary exposure time	0.000000	3.2
Roll angle	220.000000	220.000000			
Roll tolerance	10.000000	10.000000			
Roll constraint allows 180D rotation	N	N			
SIM focus pos (mm)	-0.684267	-0.6828225247311905			
SIM defocus (mm)	0	0.001444936568705701			
SIM translation stage pos (mm)	-190.132523	-190.1400660498719			
SIM translation stage offset (mm)	0	0.00754346686406393			
Observation start time	149047570.184000	149046560.77958			
Observation start date	2002-09-22T02:05:06	2002-09-22T01:49:20			
Observation end time	149057570.184000	149058233.99257			
Observation end date	2002-09-22T04:51:46	2002-09-22T05:03:53			
Read mode	TIMED	TIMED			

## 2.3 Aspect





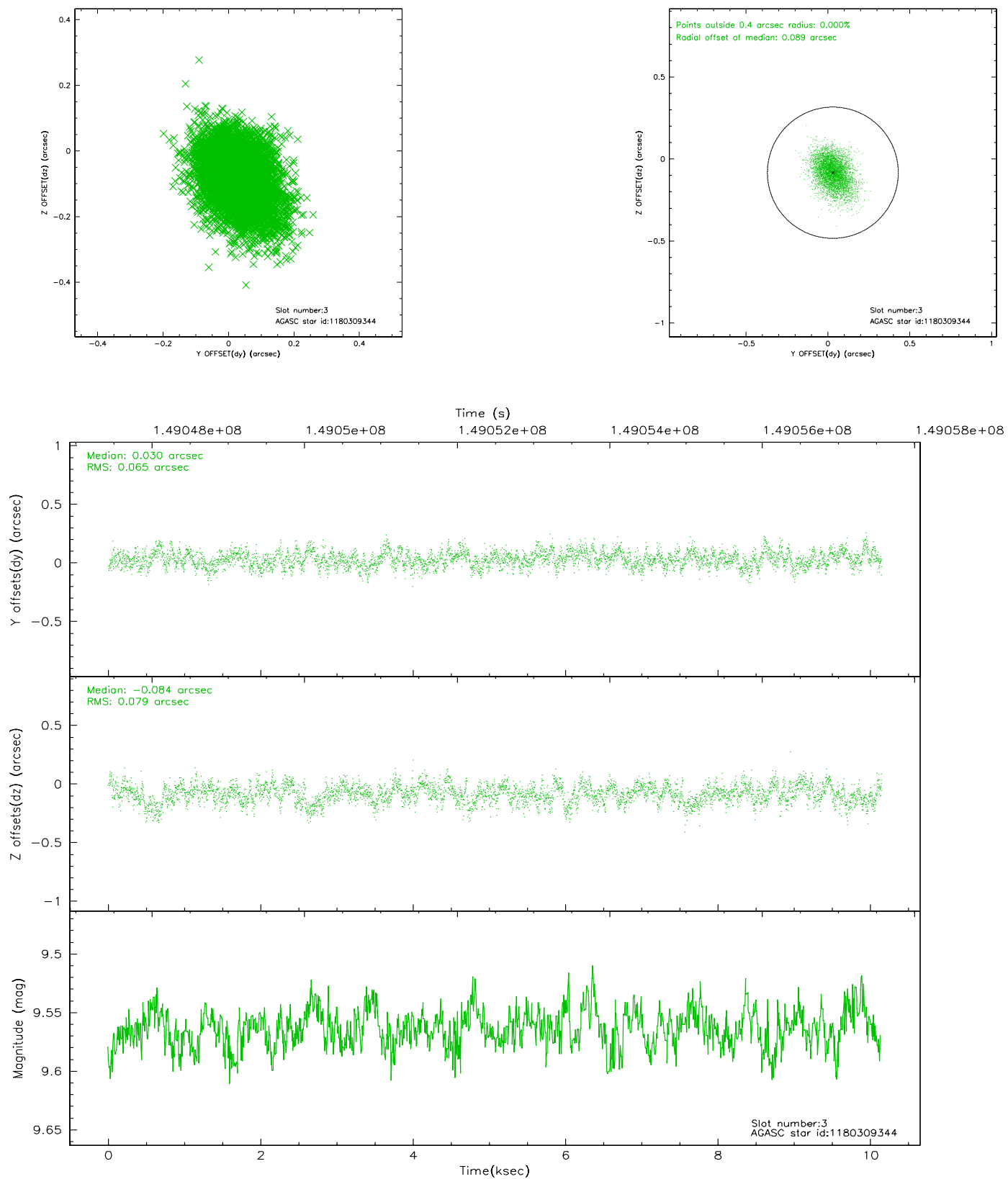
### Slot Statistics

slot	status	id	mag	n_pts	med_dy	med_dz	dr1	dr2	ra	dec	mean_y	mean_z
0	FID	ACIS-S-1	7.19	2481	0.079	0.012	0.011	0.018	0.000000	0.000000	941.42	-1724.00
1	FID	ACIS-S-3	7.36	2480	-0.111	-0.032	0.009	0.015	0.000000	0.000000	58.82	-1858.17
2	FID	ACIS-S-4	7.20	2481	0.010	0.028	0.013	0.024	0.000000	0.000000	2158.70	179.58
3	GUIDE	1180309344	9.56	4871	0.030	-0.084	0.108	0.178	213.429296	-60.678040	1112.20	-2052.52
4	GUIDE	1180437760	9.67	4950	-0.059	0.065	0.109	0.174	215.145122	-61.436357	506.27	1949.59
5	GUIDE	1180465208	8.72	4961	-0.018	-0.032	0.071	0.115	215.460543	-60.837299	-1297.13	646.61
6	GUIDE	1180312440	9.74	4957	0.027	-0.041	0.129	0.206	213.436227	-60.574922	872.60	-2336.37
7	GUIDE	1180470064	9.79	4958	0.018	0.090	0.108	0.178	216.011297	-60.925220	-1829.01	1510.92

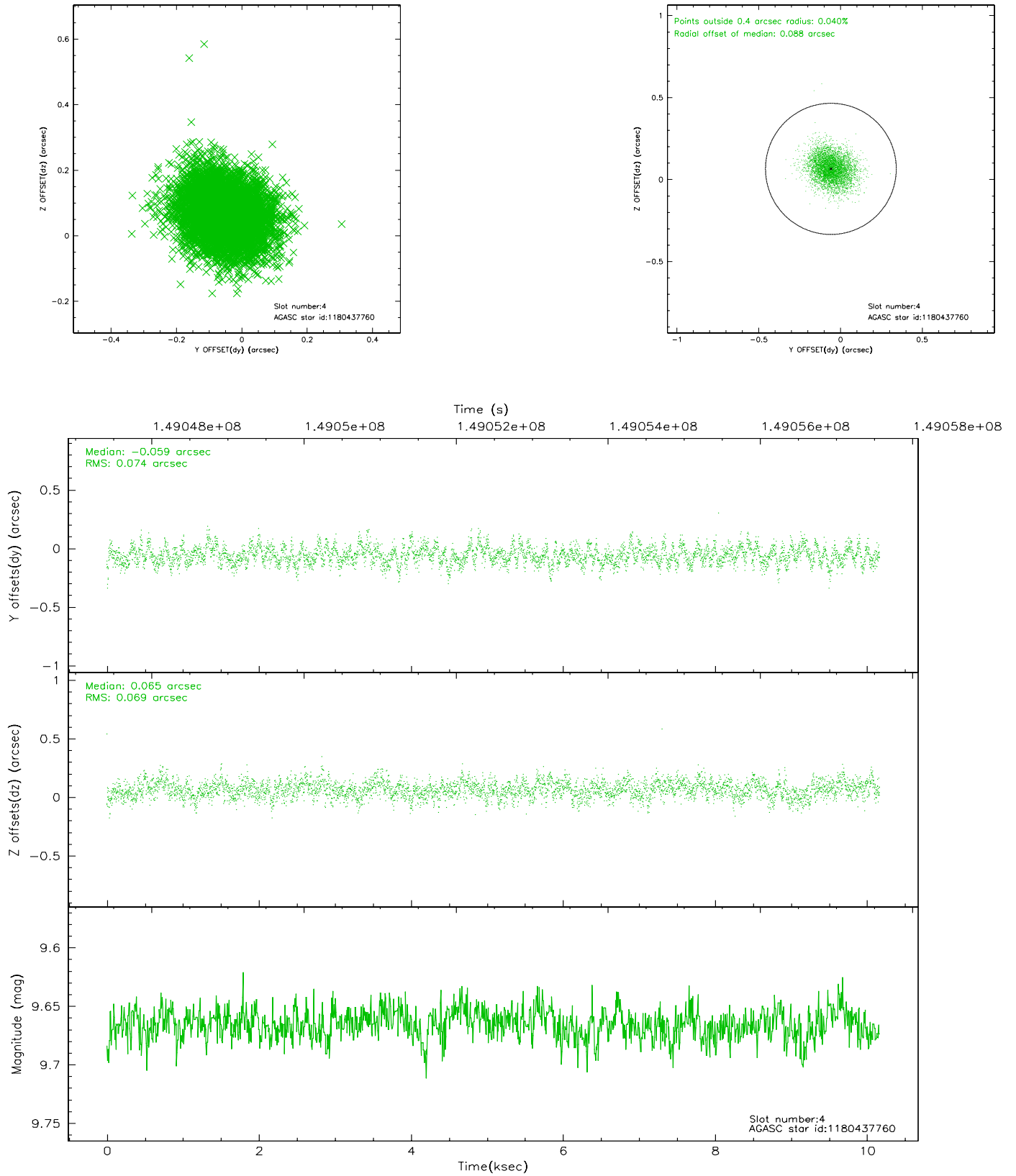


## 2.4 Star Slots

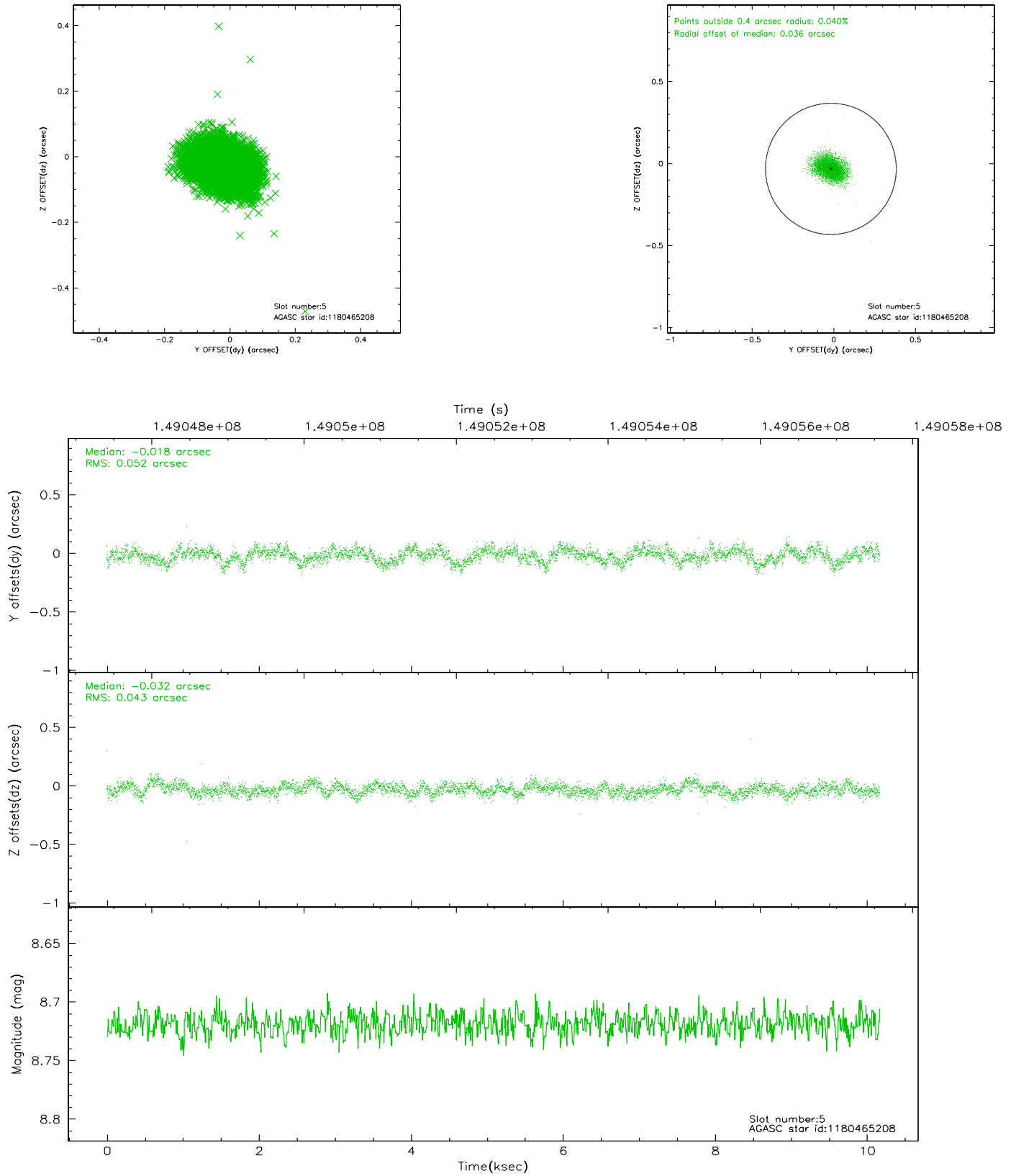
### 2.4.1 Slot 3



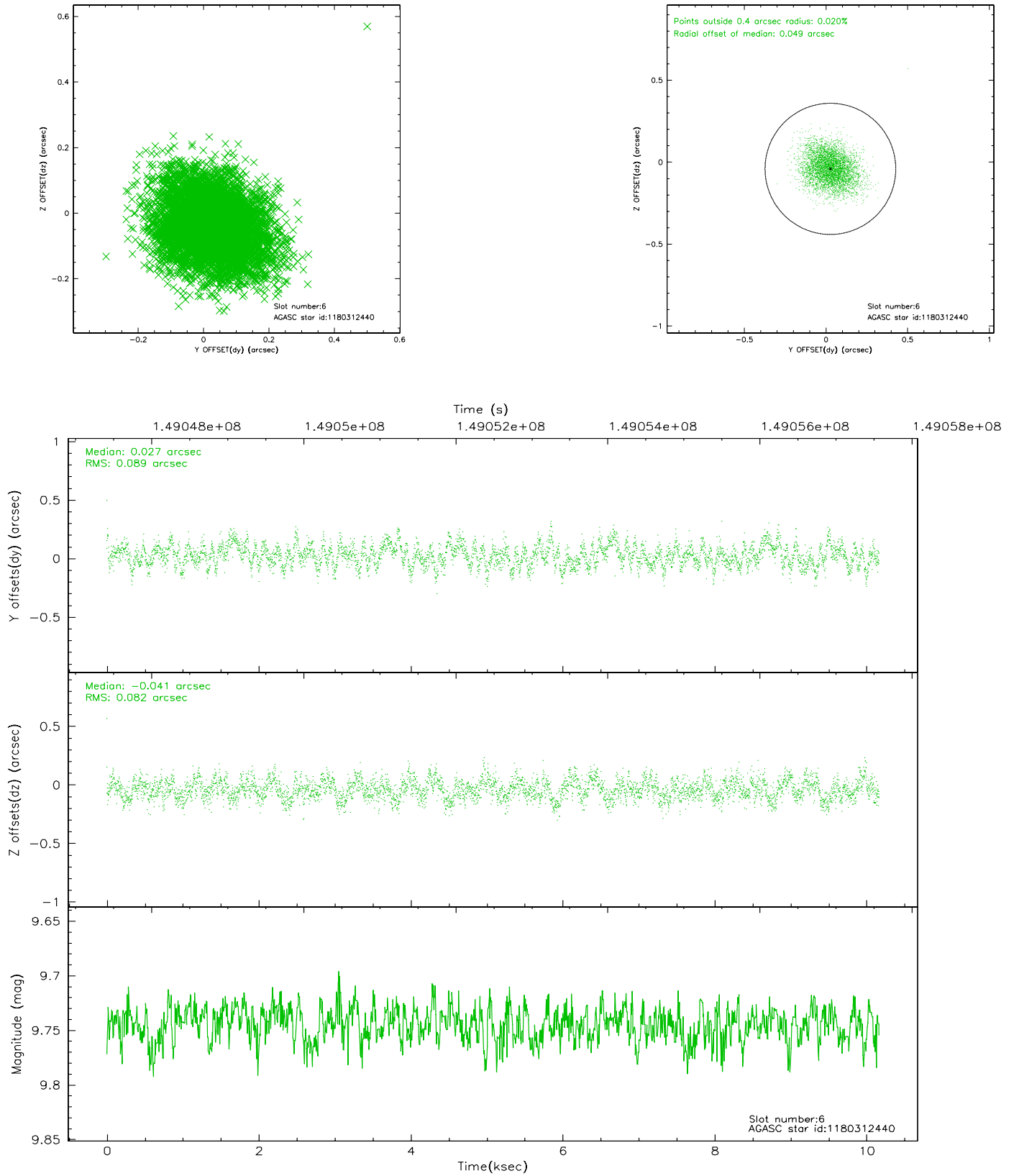
## 2.4.2 Slot 4



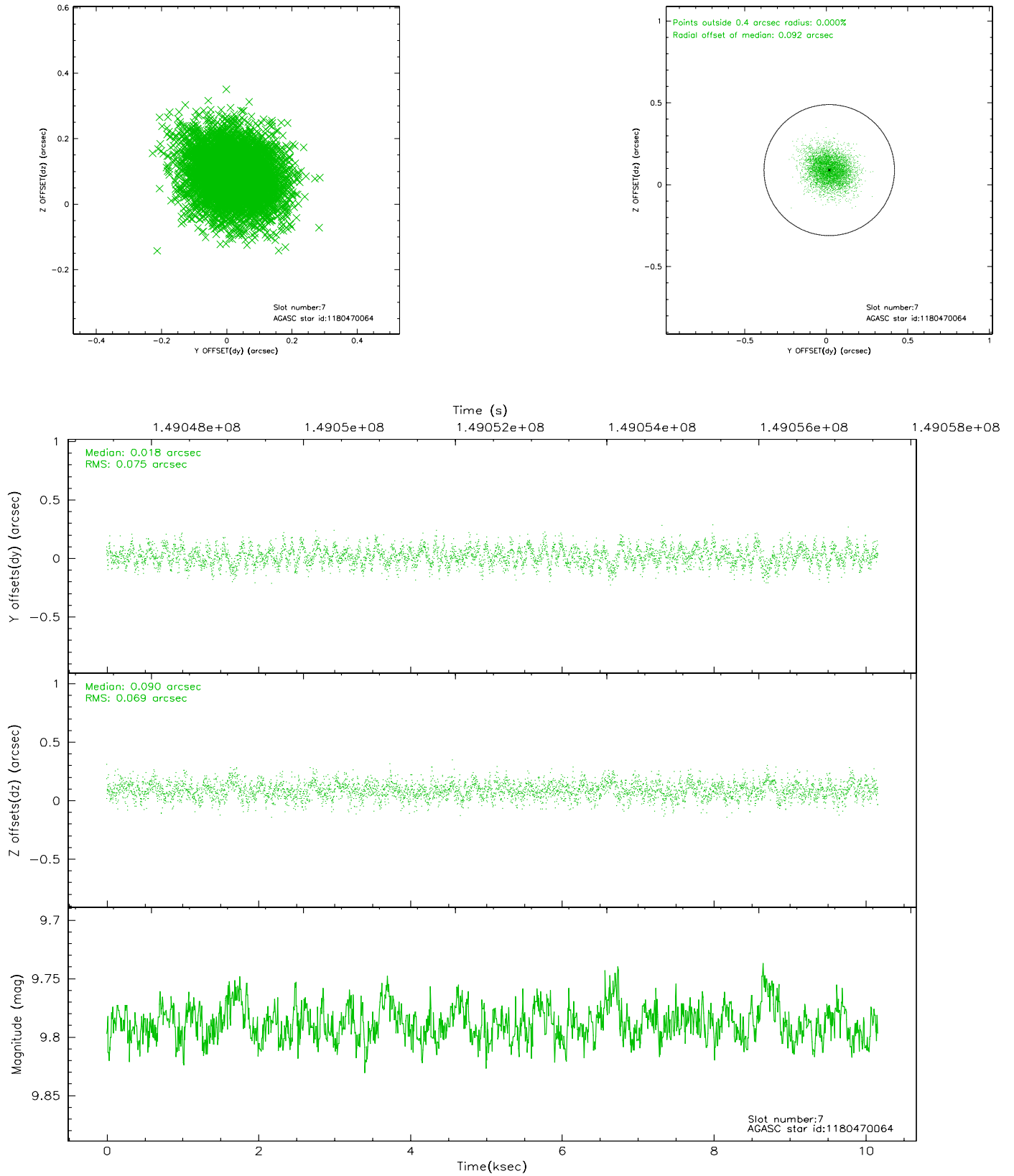
### 2.4.3 Slot 5



## 2.4.4 Slot 6

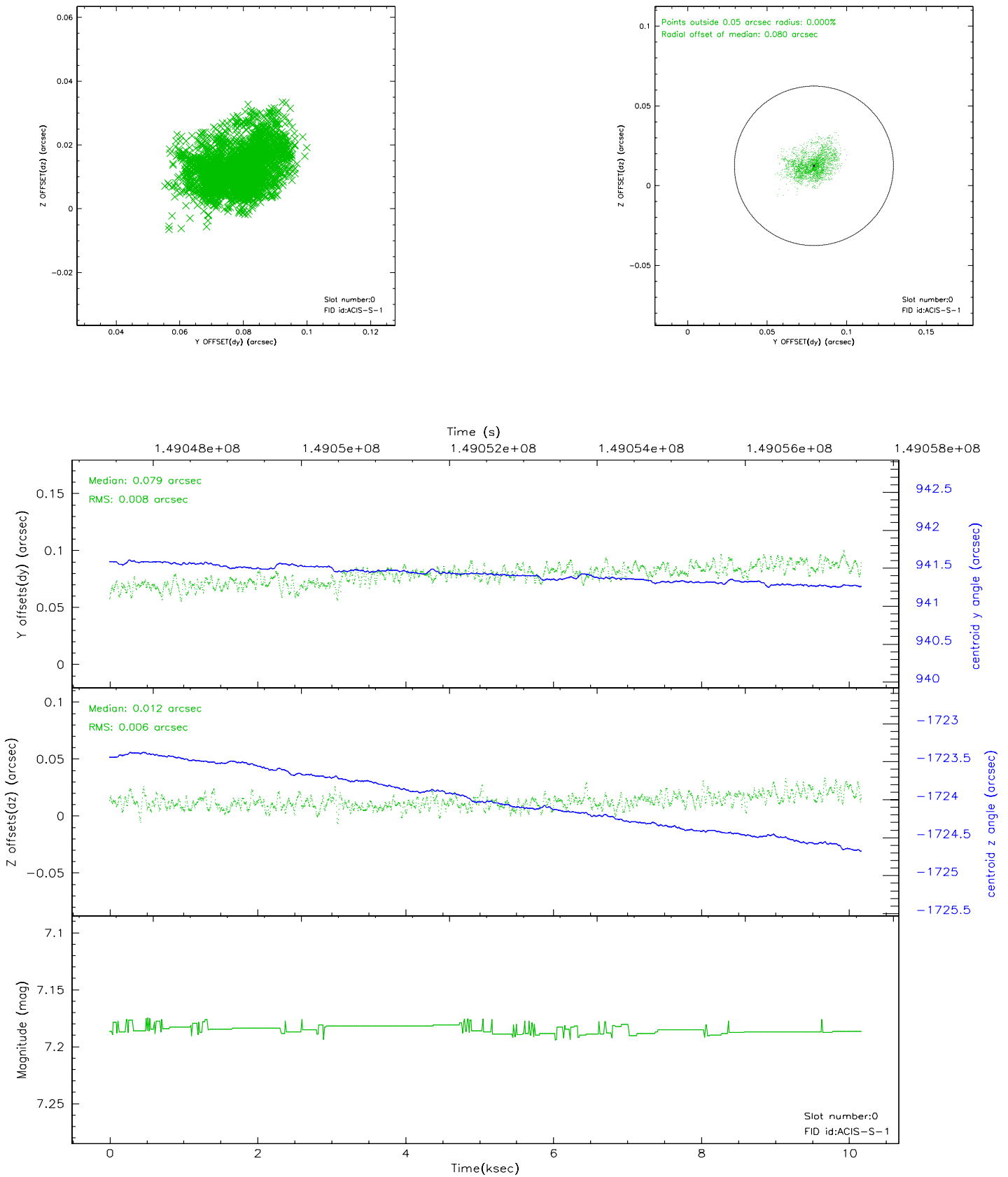


## 2.4.5 Slot 7

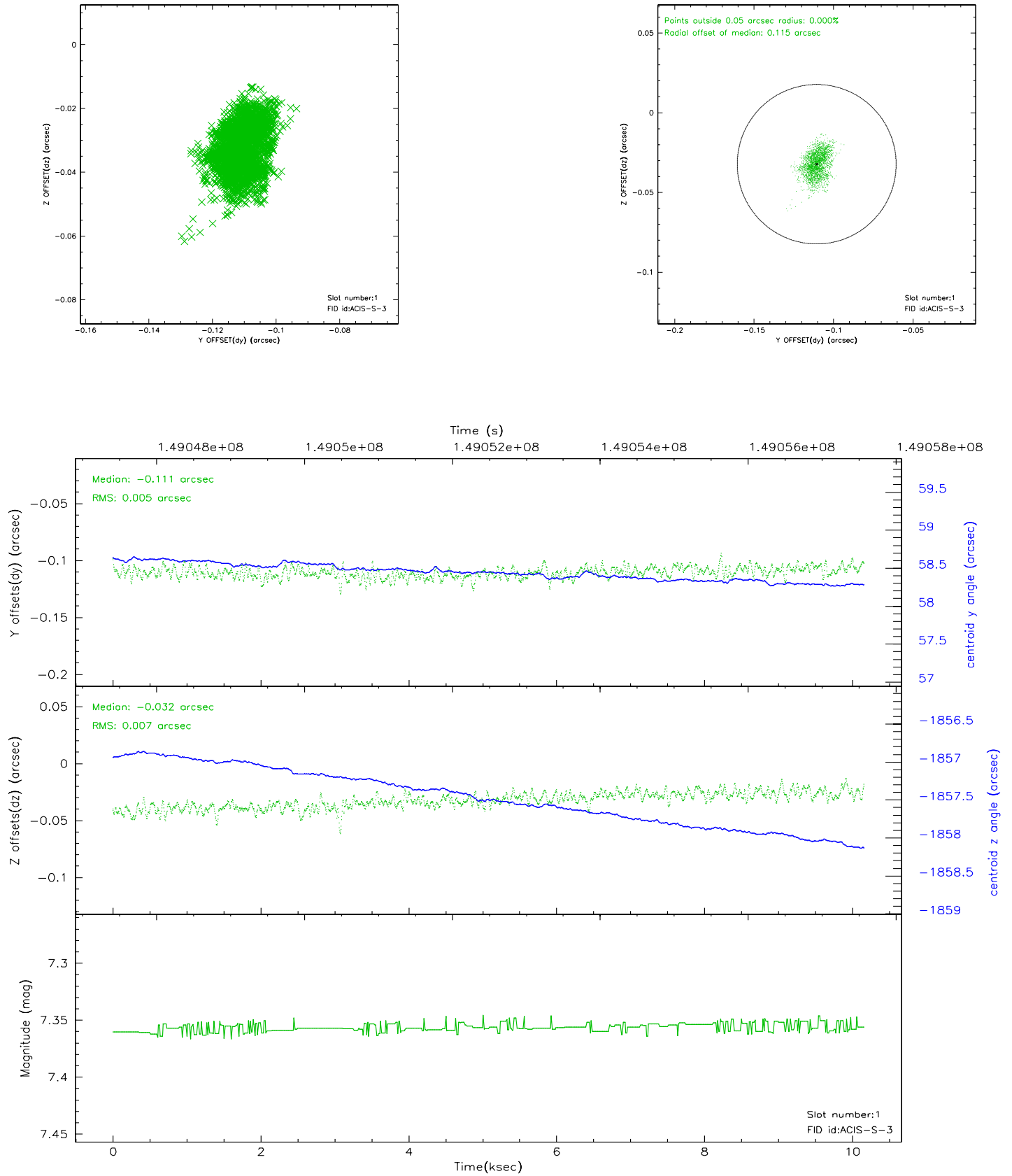


## 2.5 FID Slots

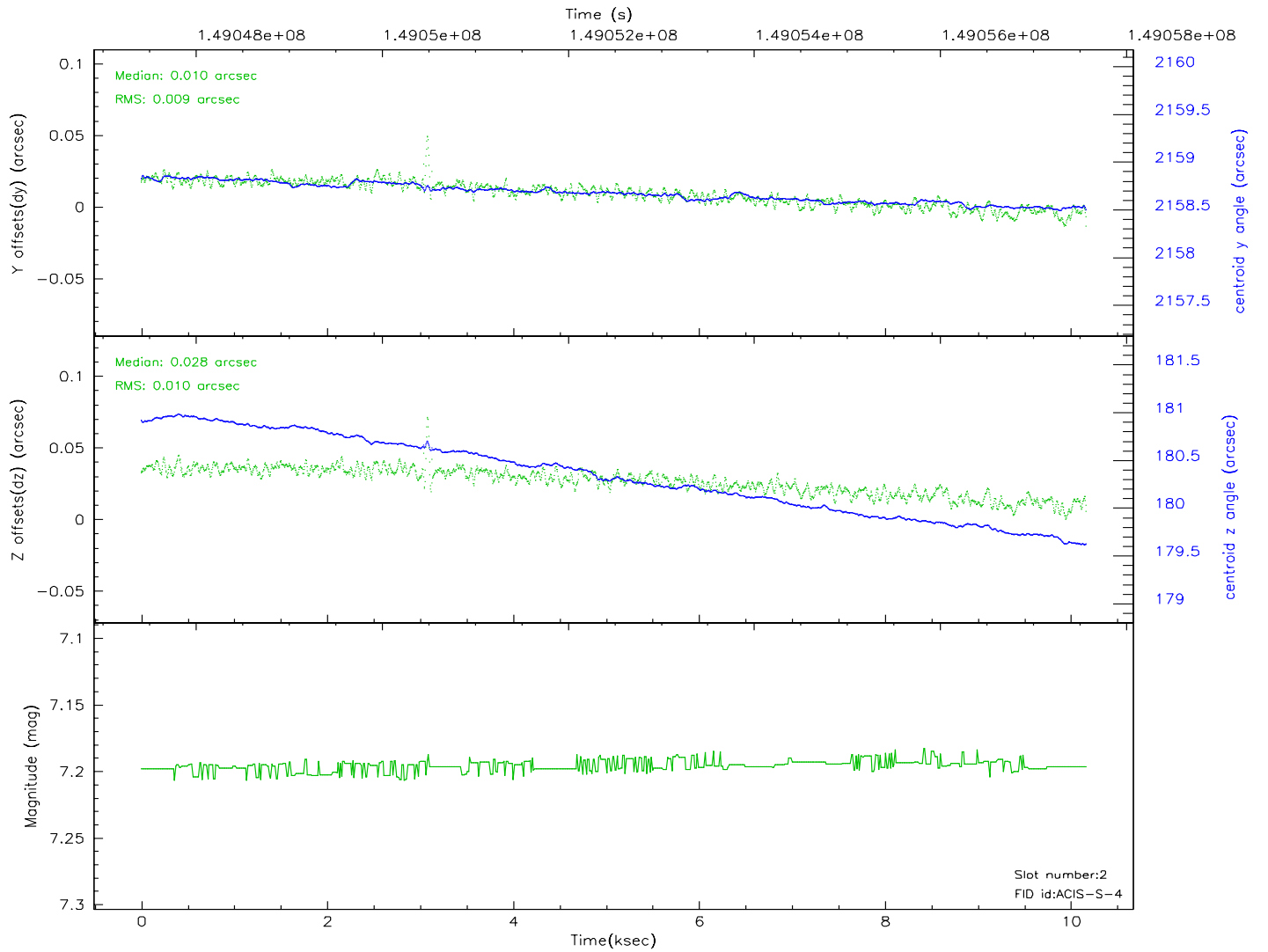
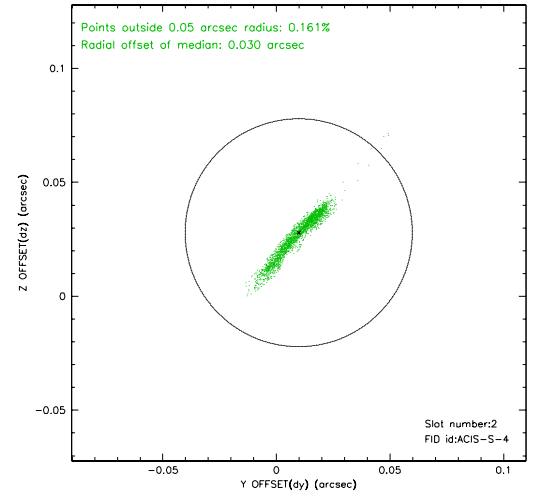
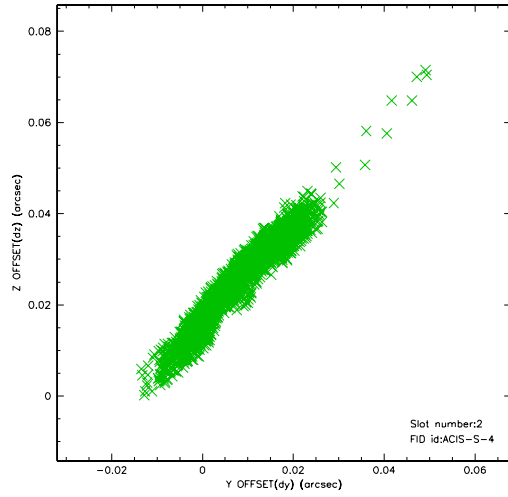
### 2.5.1 Slot 0



## 2.5.2 Slot 1

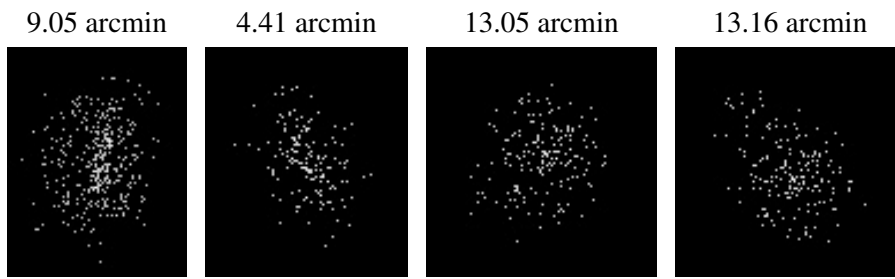


### 2.5.3 Slot 2





### 3 Point Sources



## A Summary

### A.1 Status

V&V Scientist	Jen Lauer
V&V Date (YYYY-MM-DD)	2006.10.04
V&V Edition	1
V&V Disposition and Status	OK
V&V Charge Time	10.06

### A.2 Comments

Roll constraint met.