

V&V Reference Report

L2 ASCDS Version : 7.6.9

Observation 2792 - L2 Version 001
Chandra X-Ray Center

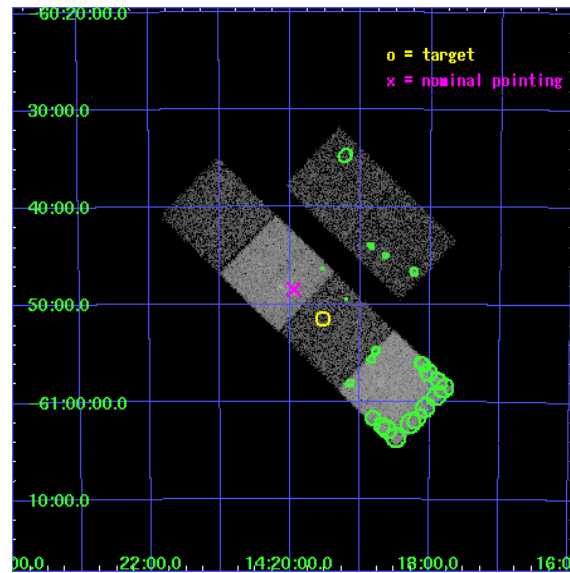
L2 Processing Date : Oct 4 2006

Contents

1	Front	2
2	OBI	3
2.1	OBI	3
2.1.1	Images	3
2.1.2	Bias	3
2.1.3	Parameters	4
2.1.4	Events	4
2.2	Compared Parameters	5
2.3	Aspect	6
2.4	Star Slots	9
2.4.1	Slot 3	9
2.4.2	Slot 4	10
2.4.3	Slot 5	11
2.4.4	Slot 6	12
2.4.5	Slot 7	13
2.5	FID Slots	14
2.5.1	Slot 0	14
2.5.2	Slot 1	15
2.5.3	Slot 2	16
3	Point Sources	17
A	Summary	18
A.1	Status	18
A.2	Comments	18

1 Front

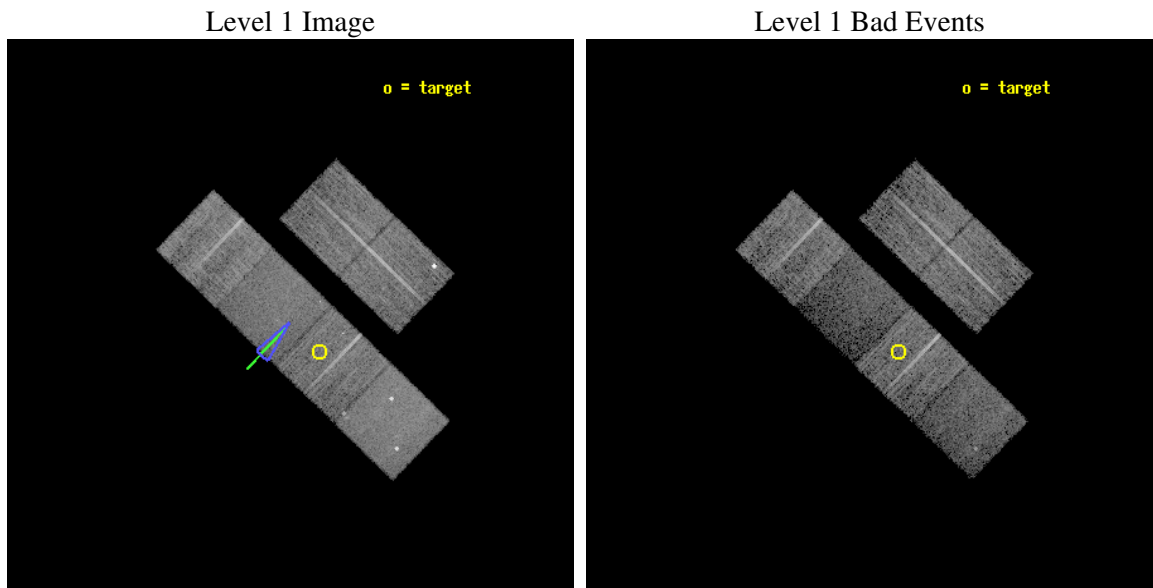
seq_num	500242
obs_id	2792
title	IMAGING AND TIMING STUDIES OF THE VERY ENERGETIC PSR J1420-6048
observer	Prof. Roger Romani
object	PSR J1420-6048
dtcycle	0
cycle	P
ra_targ	214.883333
dec_targ	-60.858333
ra_nom	214.98618424414
dec_nom	-60.808045270558
roll_nom	223.92767649245
revision	2
ontime	10060.799962521
livetime	9933.4040555087
ontime2	10051.077171355
ontime3	10051.077041775
ontime5	10060.799962521
ontime6	10060.799962521
ontime7	10060.799962521
ontime8	10060.799962521
l2events	72060



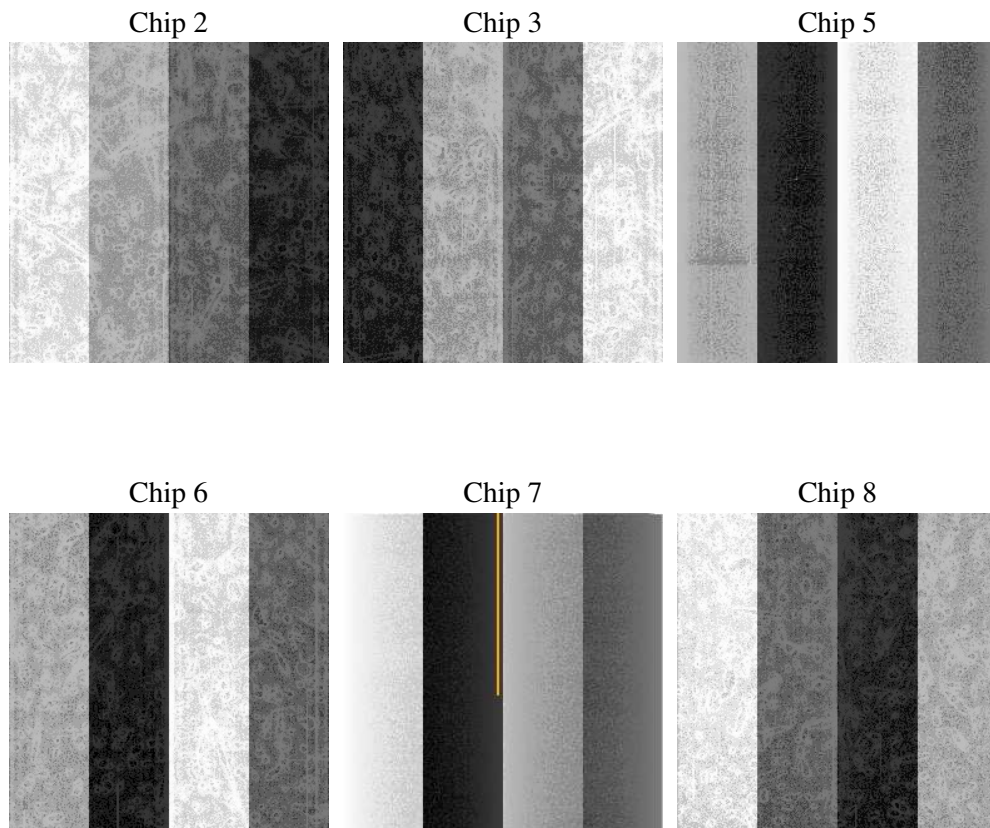
2 OBI

2.1 OBI

2.1.1 Images



2.1.2 Bias



2.1.3 Parameters

obi_num	0
ascdsver	7.6.9
caldbver	3.2.3
date	2006-10-04T10:05:59
revision	2

sched_exp_time	10100.000000
ontime	10066.545526326
ontime2	10053.581725061
ontime3	10056.82260558
ontime5	10063.304536164
ontime6	10066.545526326
ontime7	10063.304516226
ontime8	10066.545526326
l1events	333899

2.1.4 Events

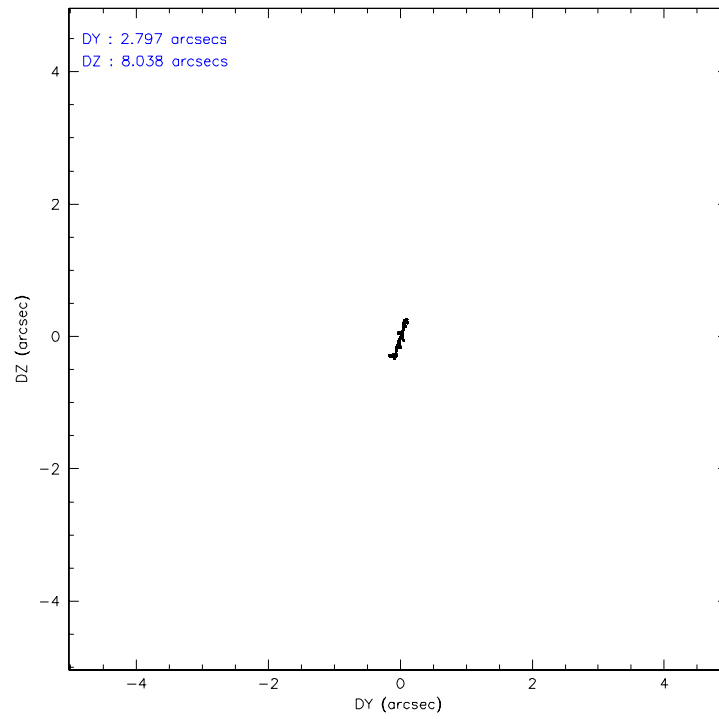
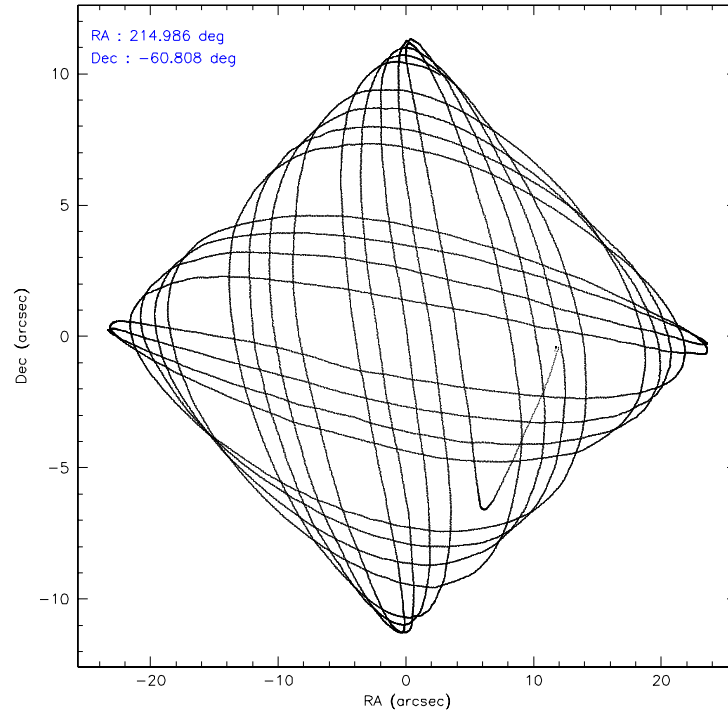
	ccd 2	ccd 3	ccd 5	ccd 6	ccd 7	ccd 8
level 1 events	57330	51006	63060	51869	48078	62556
rejected events	49110	46167	29124	45187	24919	48767
rejected %	85%	90%	46%	87%	51%	77%

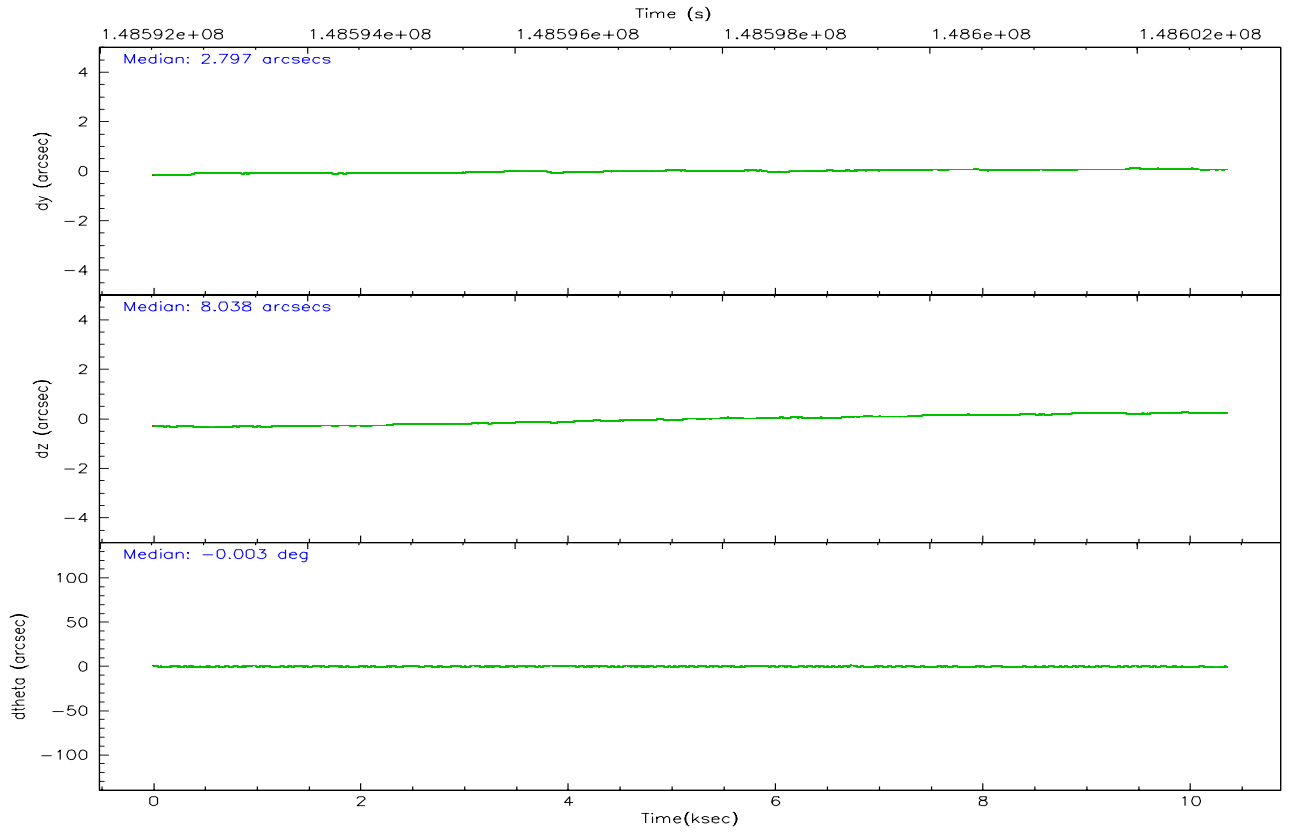
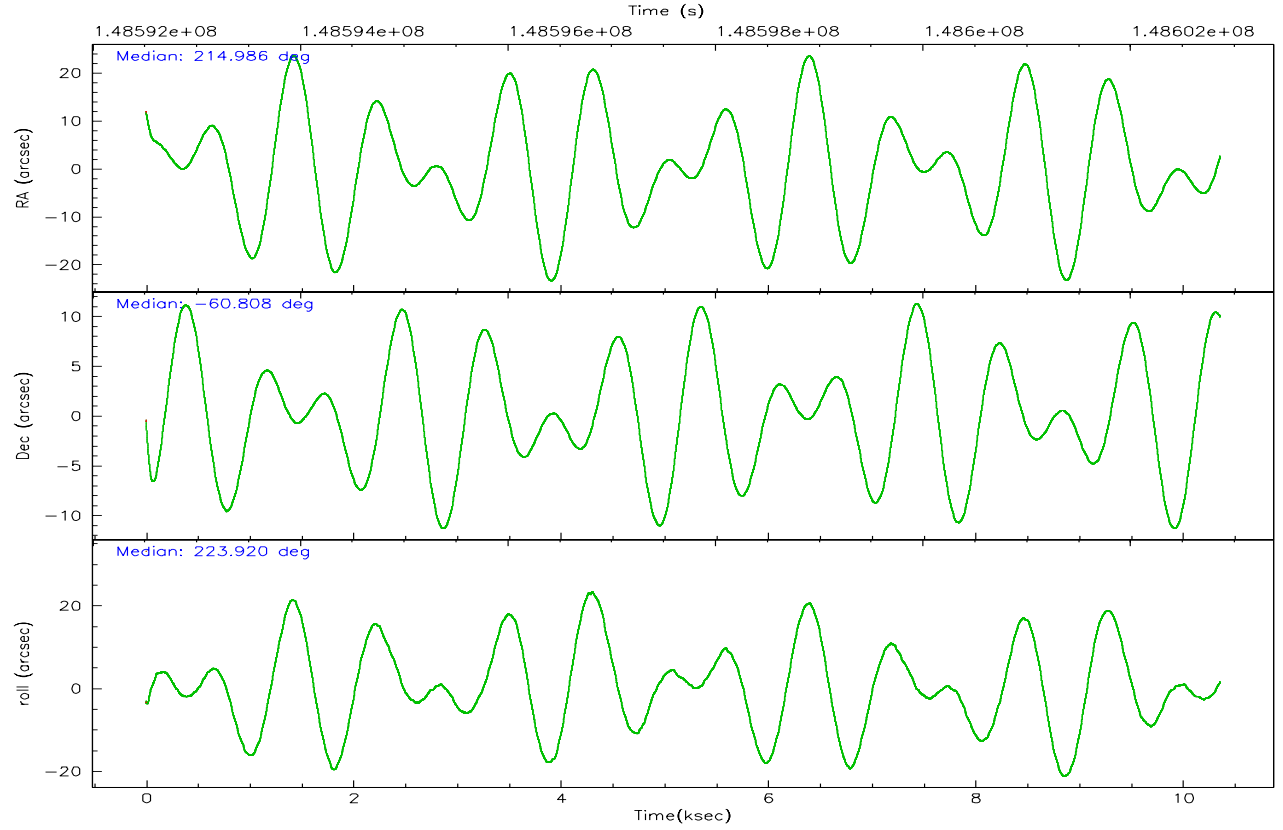
	ccd 2	ccd 3	ccd 5	ccd 6	ccd 7	ccd 8
grade 0 events	5203	1904	4013	3103	1791	3840
	9%	3%	6%	5%	3%	6%
grade 1 events	43	22	73	37	33	46
	0%	0%	0%	0%	0%	0%
grade 2 events	1129	934	10924	1261	6003	3169
	1%	1%	17%	2%	12%	5%
grade 3 events	536	584	990	651	1555	1463
	0%	1%	1%	1%	3%	2%
grade 4 events	547	519	949	592	1550	1339
	0%	1%	1%	1%	3%	2%
grade 5 events	1411	1581	3283	1652	3728	2410
	2%	3%	5%	3%	7%	3%
grade 6 events	807	898	17075	1084	12271	3981
	1%	1%	27%	2%	25%	6%
grade 7 events	47654	44564	25753	43489	21147	46308
	83%	87%	40%	83%	43%	74%

2.2 Compared Parameters

Parameter	Planned	Actual	Parameter	Planned	Actual
Instrument	ACIS	ACIS	Obspar format version number	6	6
Detector	ACIS-235678	ACIS-235678	Obspar file type	PREDICTED	ACTUAL
Grating	NONE	NONE	Obspar update status	NONE	UPDATED
Data mode	VFAINT	VFAINT	Number of optional ACIS chips dropped	0	0
Observation mode	POINTING	POINTING	On-chip summing requested	N	N
Pointing RA	215.000918	214.9861842441413	Subarray requested	NONE	NONE
Pointing Dec	-60.781804	-60.80804527055848	Alternating exposures requested	N	N
Pointing Roll	223.783930	223.9276764924522	Primary exposure time	0.000000	3.2
Roll angle	220.000000	220.000000			
Roll tolerance	10.000000	10.000000			
Roll constraint allows 180D rotation	N	N			
SIM focus pos (mm)	-0.684267	-0.6828225247311905			
SIM defocus (mm)	0	0.001444936568705701			
SIM translation stage pos (mm)	-190.132523	-190.1400660498719			
SIM translation stage offset (mm)	0	0.00754346686406393			
Observation start time	148592766.184000	148591772.36077			
Observation start date	2002-09-16T19:45:02	2002-09-16T19:29:32			
Observation end time	148602866.184000	148603000.72373			
Observation end date	2002-09-16T22:33:22	2002-09-16T22:36:40			
Read mode	TIMED	TIMED			

2.3 Aspect



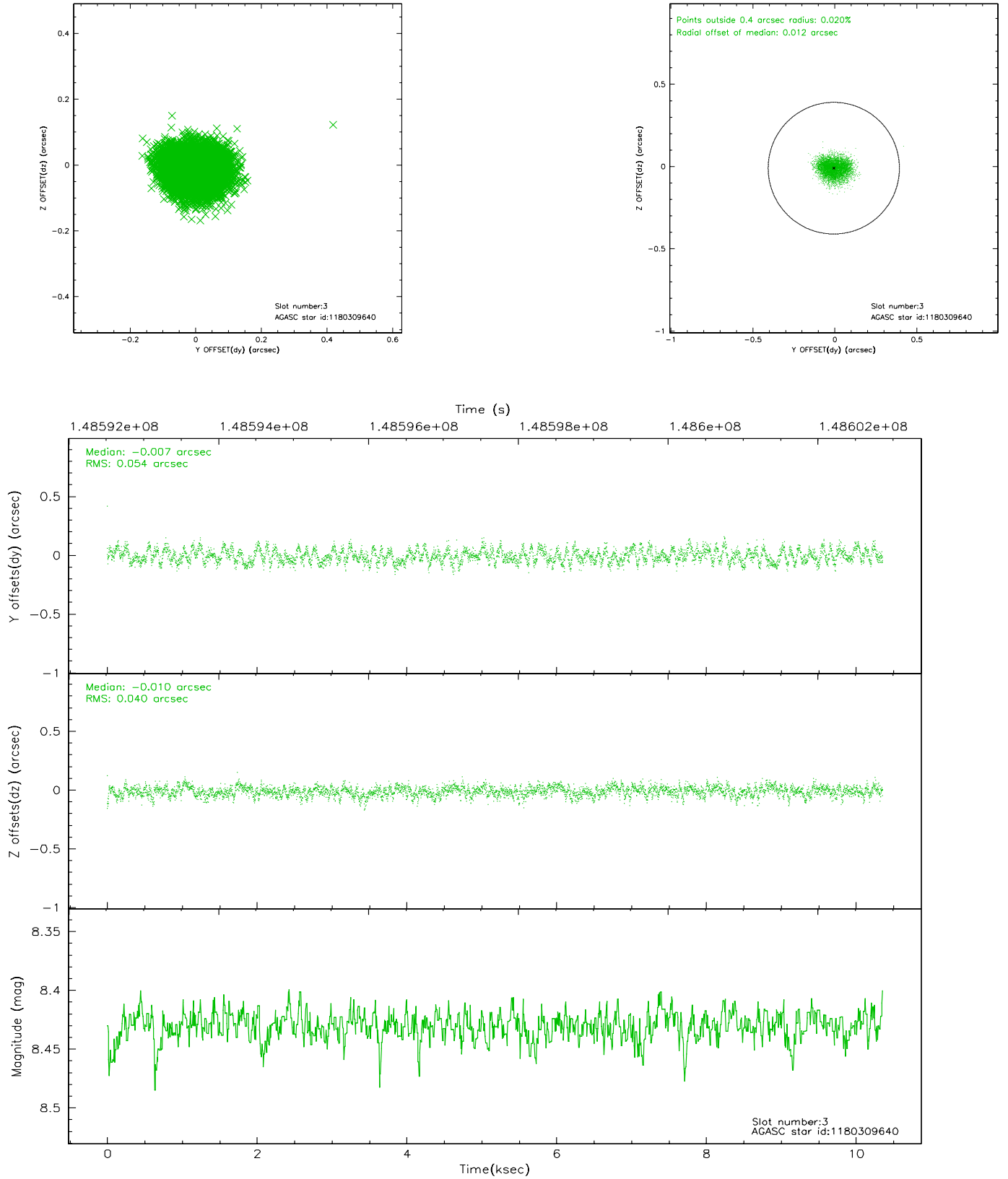


Slot Statistics

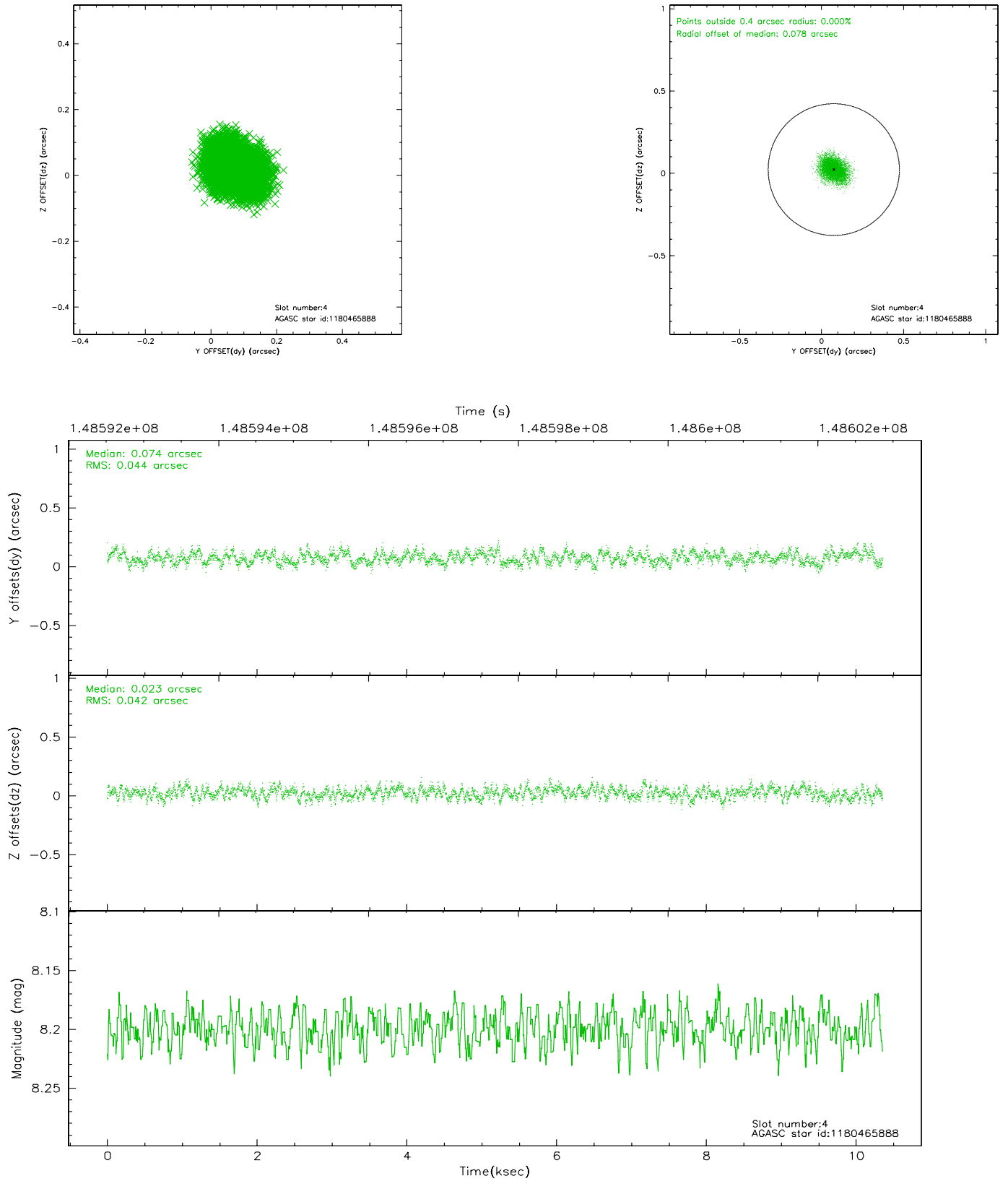
slot	status	id	mag	n_pts	med_dy	med_dz	dr1	dr2	ra	dec	mean_y	mean_z
0	FID	ACIS-S-2	7.11	2528	0.003	0.022	0.008	0.013	0.000000	0.000000	-755.44	-1729.17
1	FID	ACIS-S-4	7.20	2528	-0.063	-0.007	0.006	0.011	0.000000	0.000000	2157.56	178.74
2	FID	ACIS-S-5	7.24	2528	0.028	-0.006	0.007	0.012	0.000000	0.000000	-1807.59	173.02
3	GUIDE	1180309640	8.43	5055	-0.007	-0.010	0.073	0.112	213.569198	-60.971155	2295.91	-1217.88
4	GUIDE	1180465888	8.20	5055	0.074	0.023	0.065	0.104	215.037670	-61.081836	701.18	824.49
5	GUIDE	1180465208	8.72	5055	-0.008	0.052	0.070	0.114	215.460543	-60.837299	-442.32	704.89
6	GUIDE	1180469776	9.40	5052	-0.069	-0.008	0.113	0.179	216.482615	-60.942296	-1451.05	2231.27
7	GUIDE	1180309344	9.56	5036	0.012	-0.051	0.105	0.171	213.429296	-60.678040	1764.20	-2161.65

2.4 Star Slots

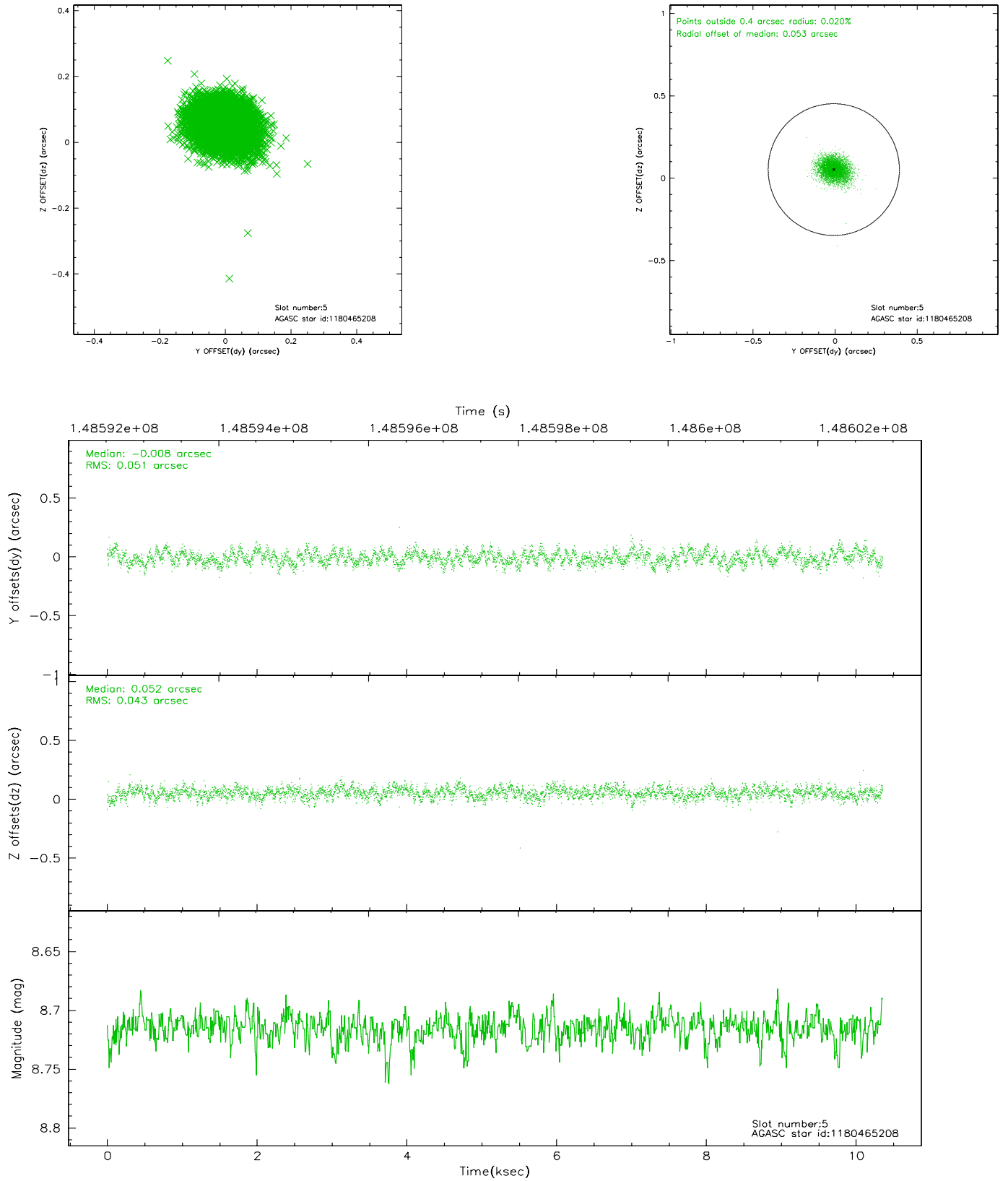
2.4.1 Slot 3



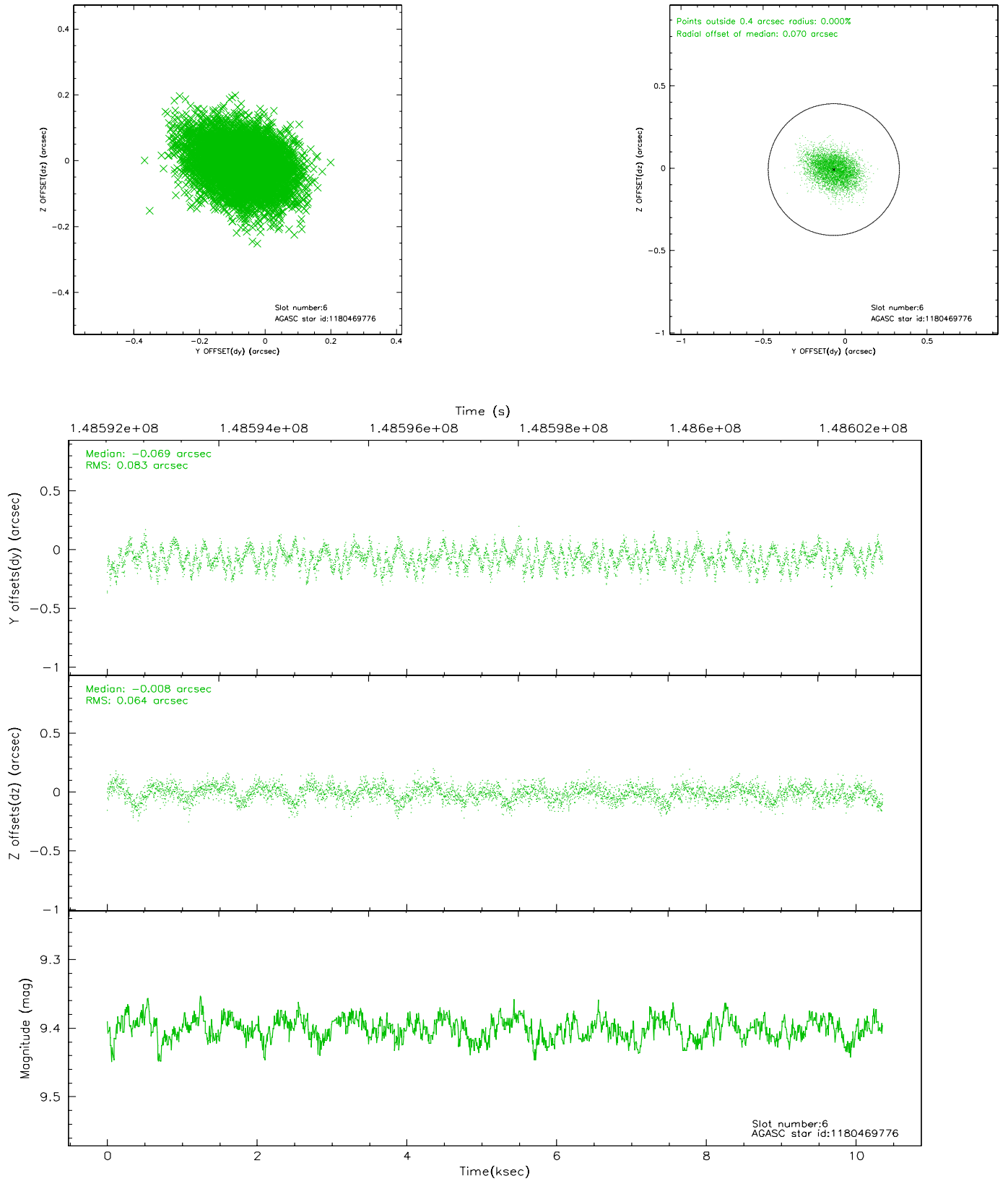
2.4.2 Slot 4



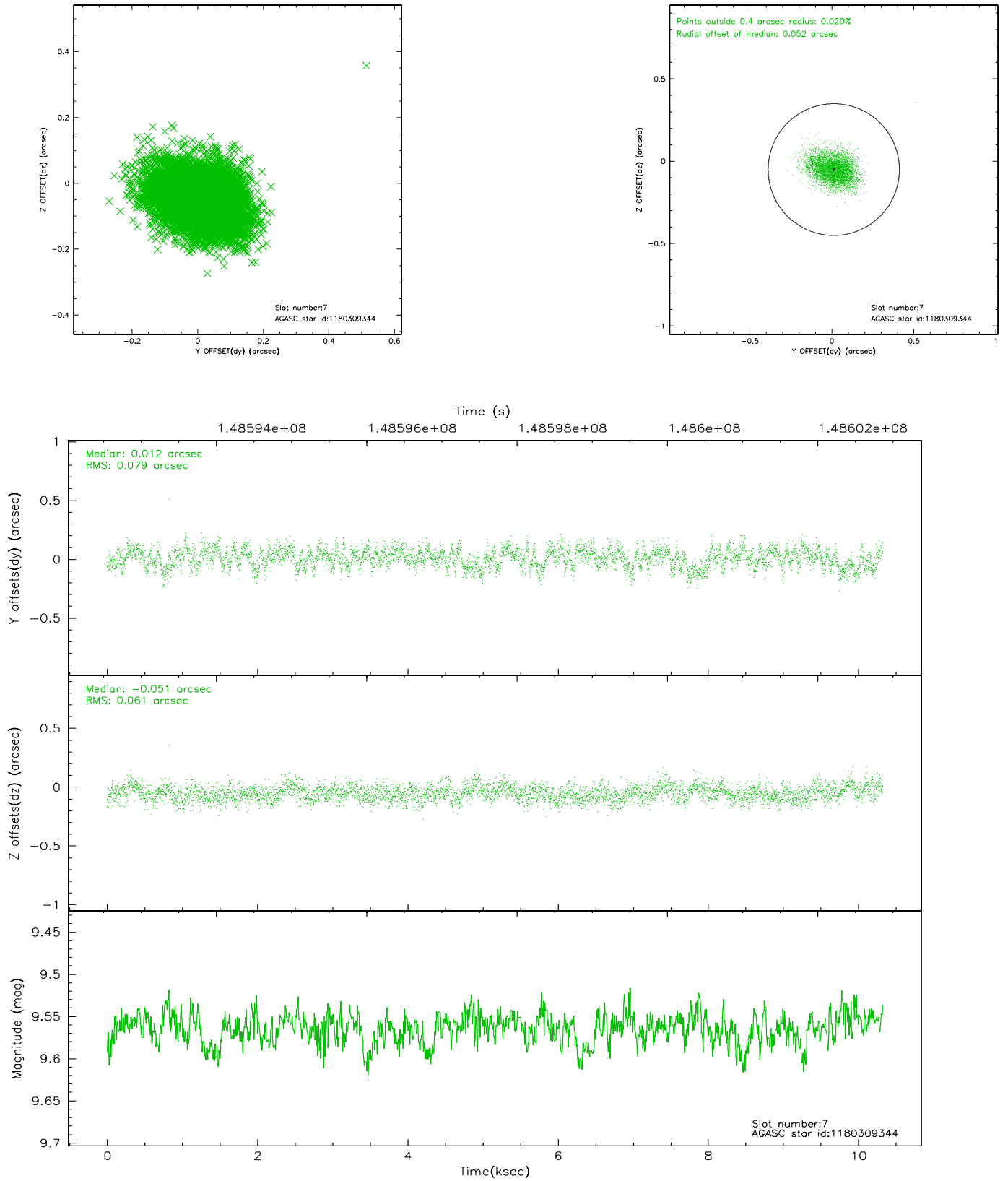
2.4.3 Slot 5



2.4.4 Slot 6

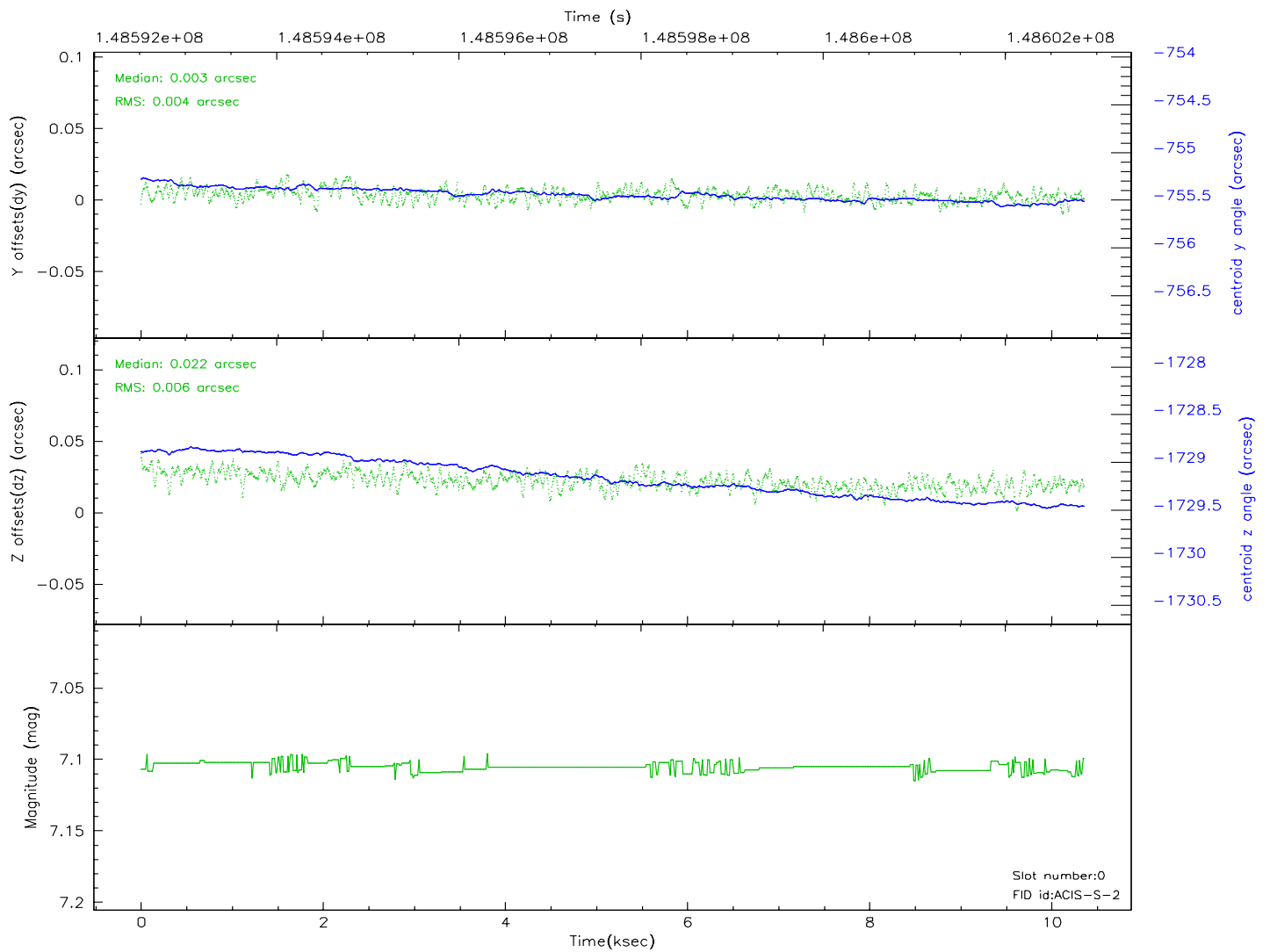
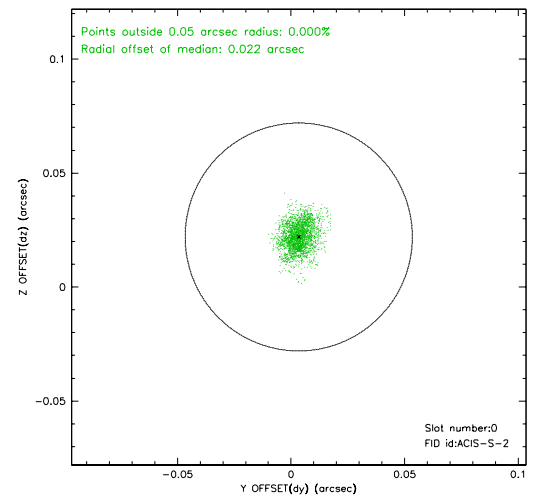
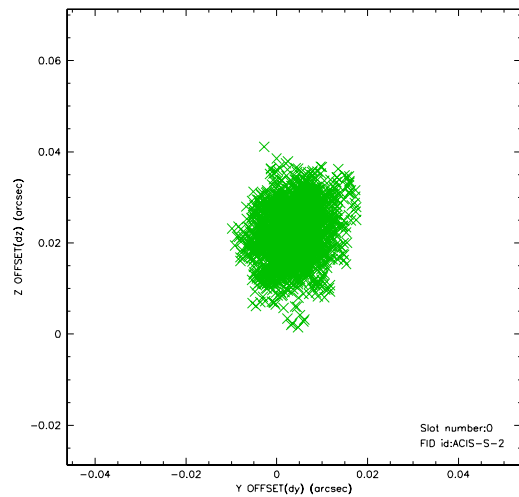


2.4.5 Slot 7

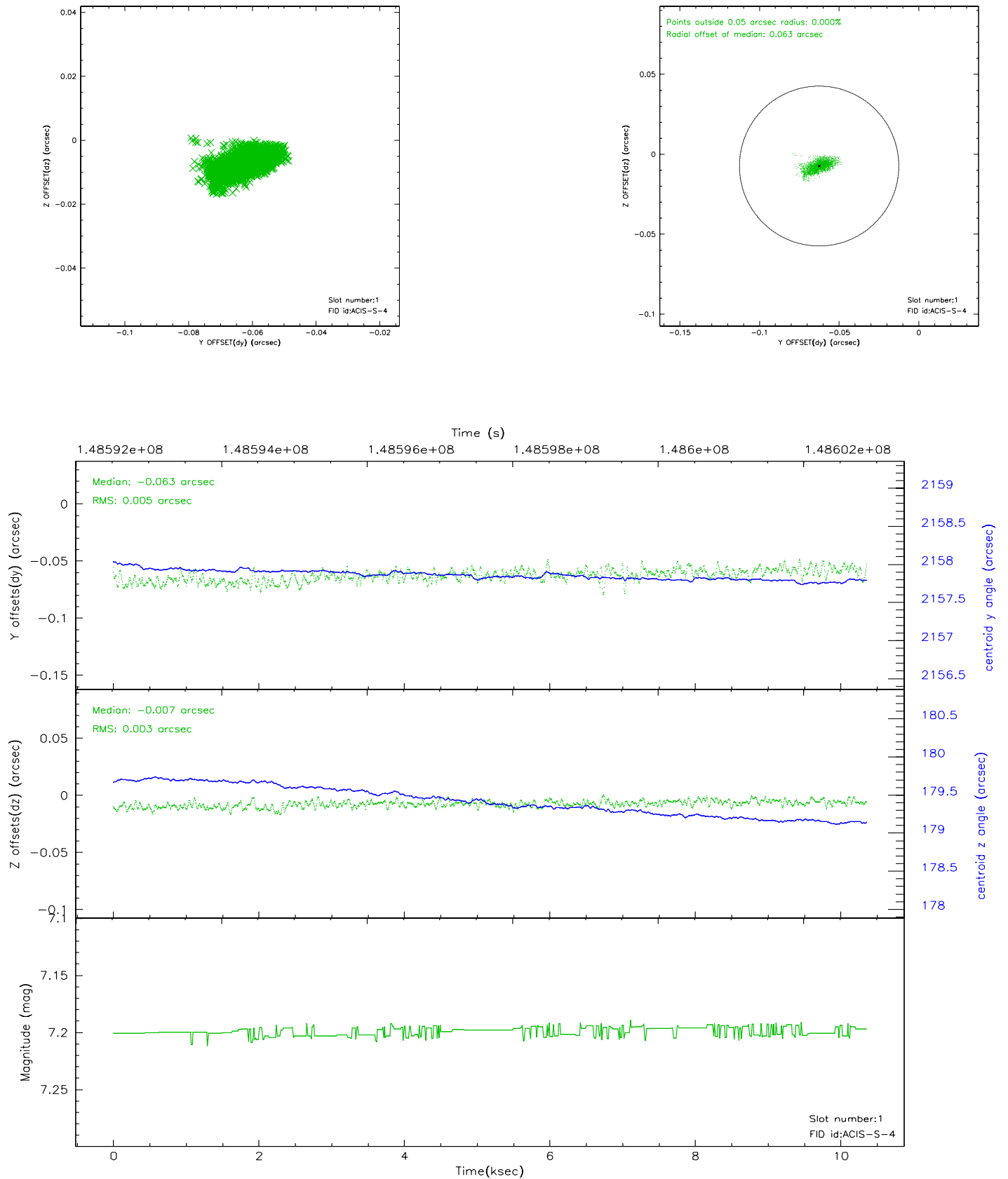


2.5 FID Slots

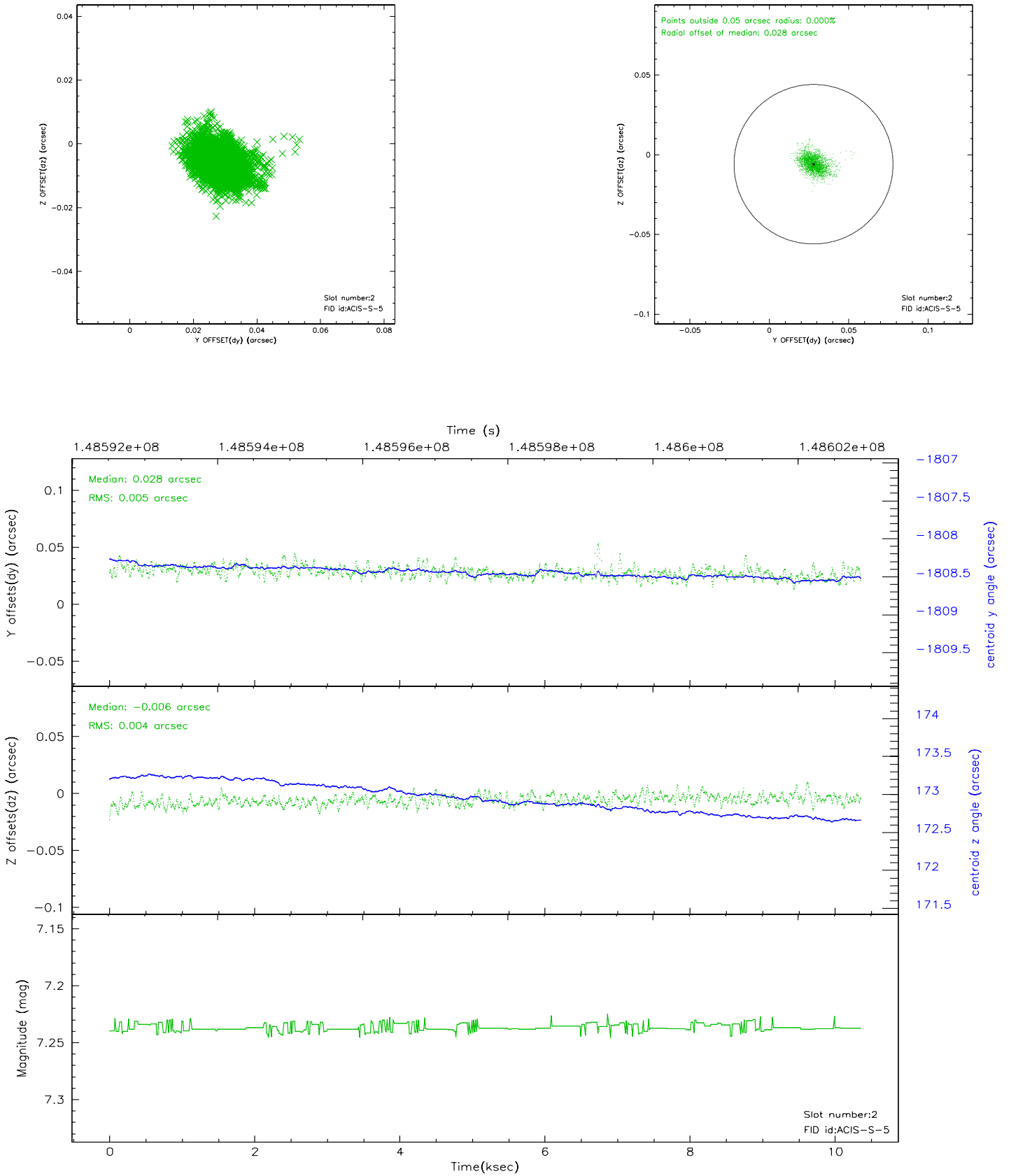
2.5.1 Slot 0



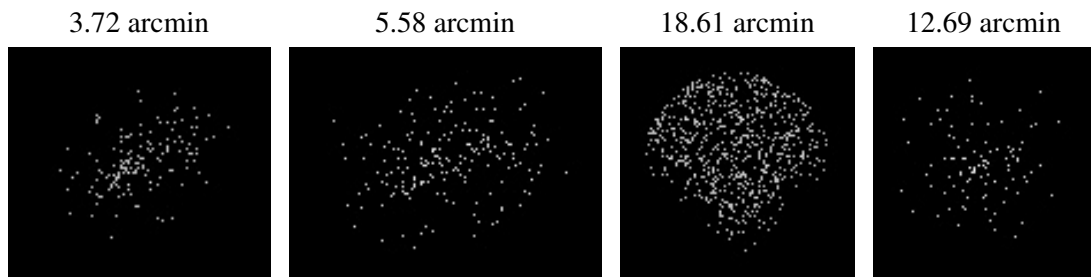
2.5.2 Slot 1



2.5.3 Slot 2



3 Point Sources



A Summary

A.1 Status

V&V Scientist	Jen Lauer
V&V Date (YYYY-MM-DD)	2006.10.04
V&V Edition	1
V&V Disposition and Status	OK
V&V Charge Time	10.063

A.2 Comments

Roll constraint met.