

V&V Reference Report

L2 ASCDS Version : 8.4.5

Observation 2774 - L2 Version 4
Chandra X-Ray Center

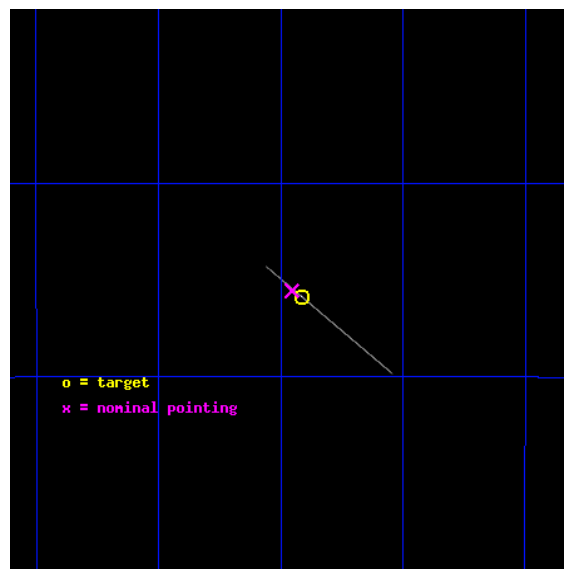
L2 Processing Date : Sep 28 2012

Contents

1	Front	2
2	OBI	3
2.1	OBI	3
2.1.1	Images	3
2.1.2	Bias	3
2.1.3	Parameters	4
2.1.4	Events	4
2.2	Compared Parameters	5
2.3	Aspect	6
2.4	Star Slots	9
2.4.1	Slot 3	9
2.4.2	Slot 4	10
2.4.3	Slot 5	11
2.4.4	Slot 6	12
2.4.5	Slot 7	13
2.5	FID Slots	14
2.5.1	Slot 0	14
2.5.2	Slot 1	15
2.5.3	Slot 2	16
A	Summary	17
A.1	Status	17
A.2	Comments	17

1 Front

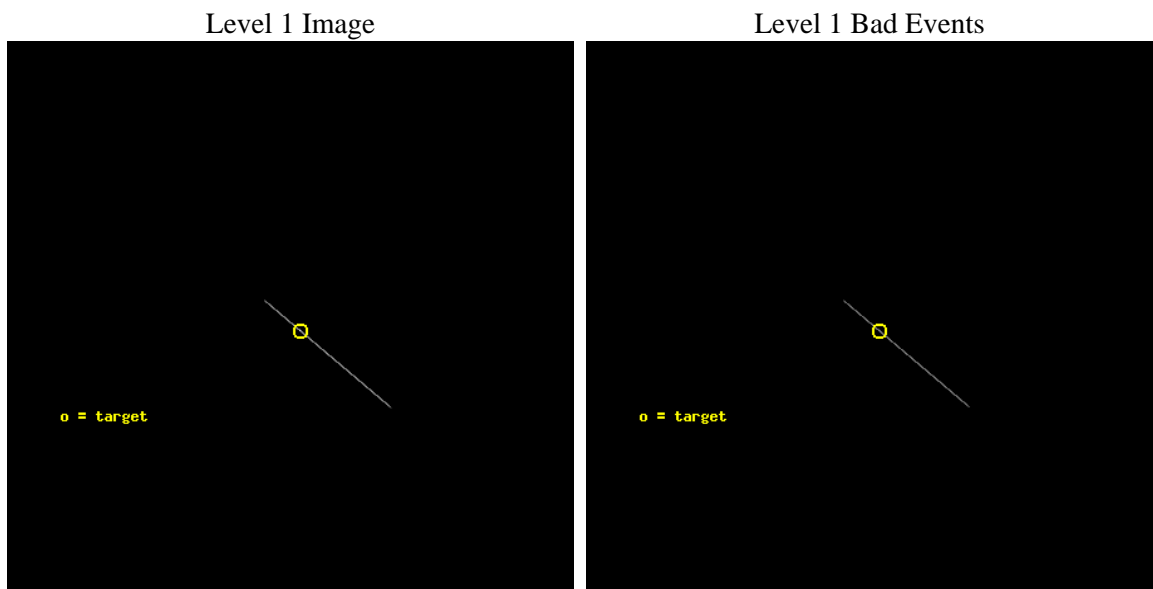
seq_num	500224	Sequence number
obs_id	2774	Observation id
title	IS THE NEARBY ISOLATED NEUTRON STAR RX J0720.4-3125 A MAGNETAR?	Pr
observer	Prof. Shrinivas Kulkarni	Principal investigator
object	RX J0720.4-3125	Source name
ra_targ	110.10375	Observer's specified target RA [deg]
dec_targ	-31.430806	Observer's specified target Dec [deg]
ra_nom	110.11364103364	Nominal RA [deg]
dec_nom	-31.425971888093	Nominal Dec [deg]
roll_nom	39.925420527528	Nominal Roll [deg]
revision	4	Processing version of data
ontime	15008.833570644	Sum of GTIs [s]
livetime	14950.205314509	Livetime [s]
ontime7	15008.833570644	Sum of GTIs [s]
l2events	84619	Number of level 2 events



2 OBI

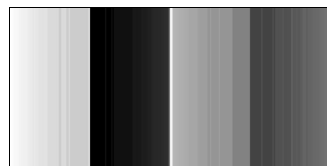
2.1 OBI

2.1.1 Images



2.1.2 Bias

Chip 7



2.1.3 Parameters

obi_num	1	Obi number	sched_exp_time	14400.000000	[s] Scheduled observation exposure time
ascdsver	8.4.5	Processing system revision	ontime	15008.833570644	Sum of GTIs [s]
caldsver	4.5.2	 	ontime7	15008.833570644	Sum of GTIs [s]
date	2012-09-28T06:43:22	Date and time of file creation	l1events	106278	Number of level 1 events
revision	4	Processing version of data			

2.1.4 Events

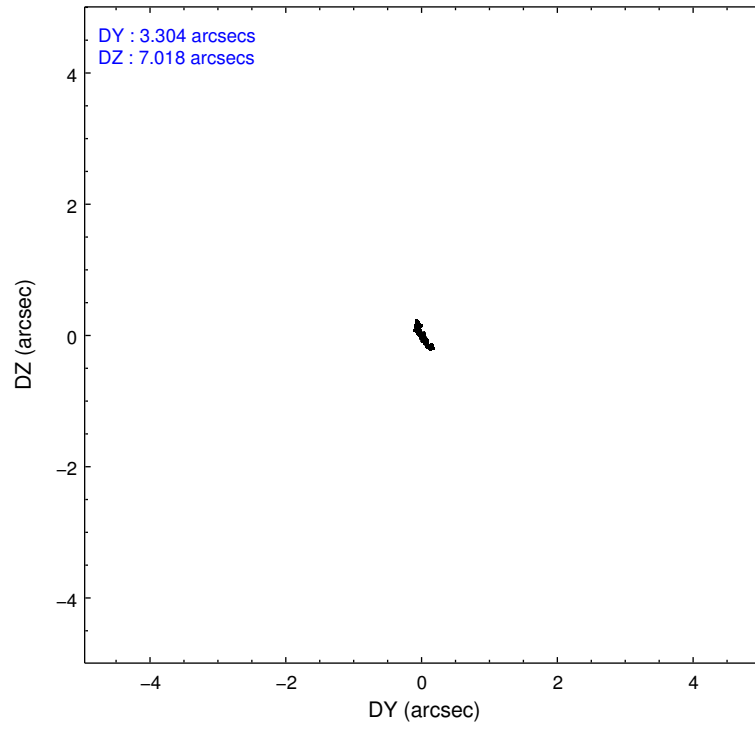
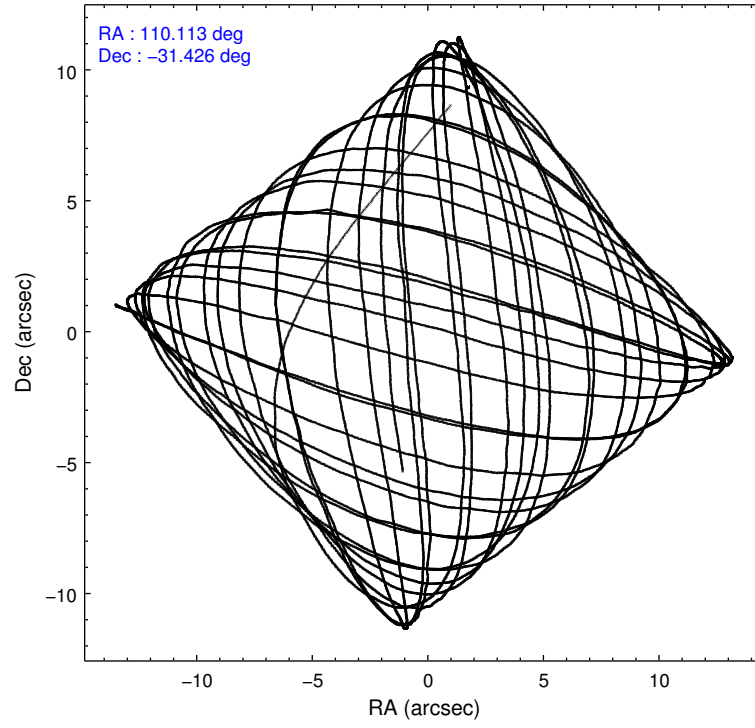
	ccd 7
level 1 events	106278
rejected events	19305
rejected %	18%

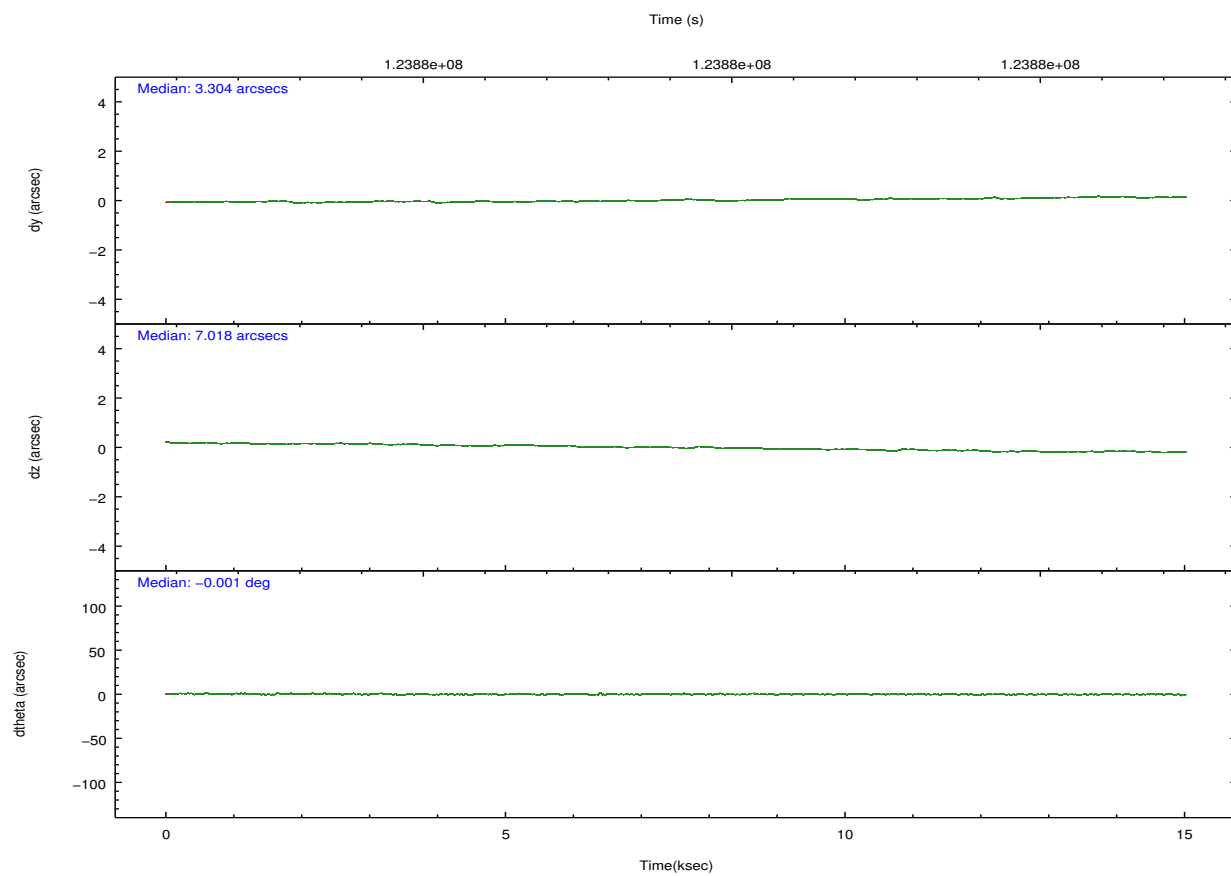
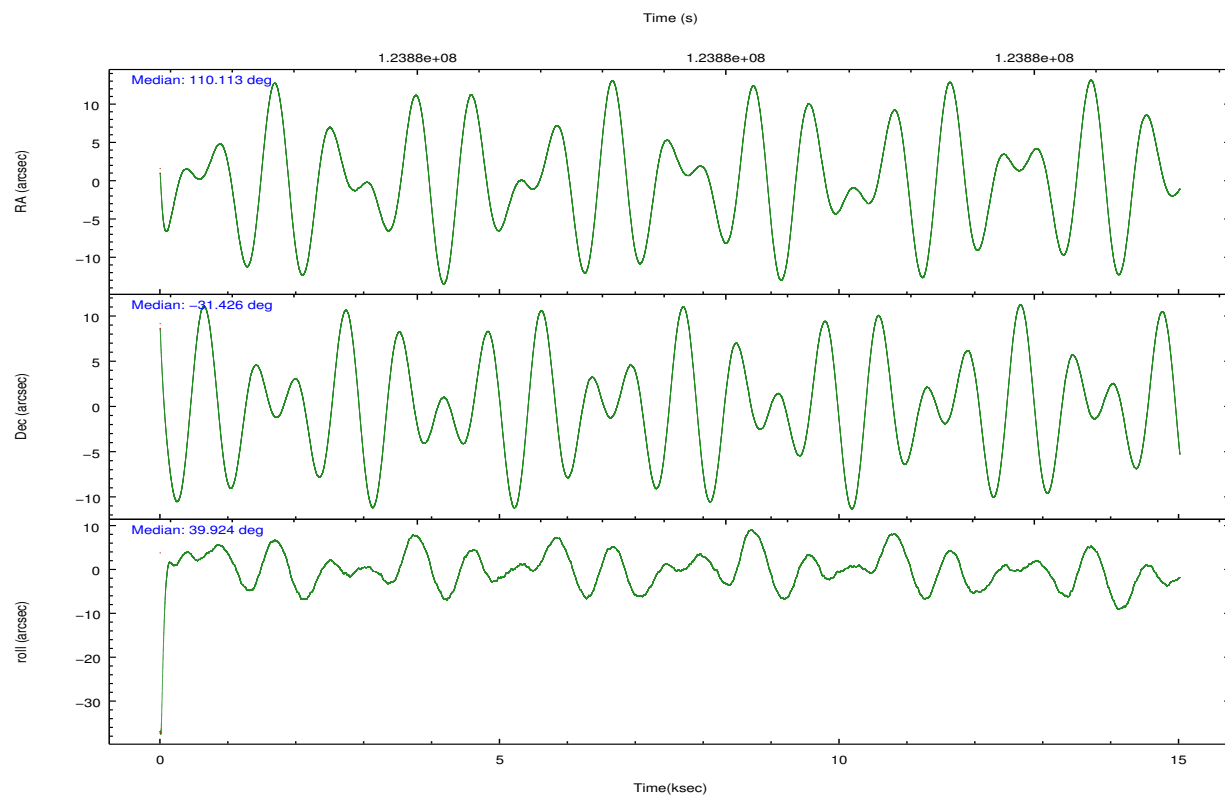
	ccd 7
grade 0 events	26485
	24%
grade 1 events	230
	0%
grade 2 events	21822
	20%
grade 3 events	7104
	6%
grade 4 events	7117
	6%
grade 5 events	11183
	10%
grade 6 events	32337
	30%
grade 7 events	0
	0%

2.2 Compared Parameters

Parameter	Planned	Actual	Parameter	Planned	Actual
Instrument	ACIS	ACIS	Obspar format version number	7	7
Detector	ACIS-7	ACIS-7	Obspar file type	PREDICTED	ACTUAL
Grating	NONE	NONE	Obspar update status	NONE	UPDATED
Data mode	CC33_FAINT	CC33_FAINT	Number of optional ACIS chips dropped	0	0
Observation mode	POINTING	POINTING	On-chip summing requested	N	N
[deg] Pointing RA	110.103026	110.1136410336367	Subarray requested	NONE	NONE
[deg] Pointing Dec	-31.451696	-31.42597188809259	Alternating exposures requested	N	N
[deg] Pointing Roll	39.763295	39.92542052752812	[s] Primary exposure time	0.000000	0
[mm] SIM focus pos	-0.684267	-0.6828225247311905			
[mm] SIM defocus	0	0.001444936568705701			
[mm] SIM translation stage pos	-182.132523	-182.1344861297048			
[mm] SIM translation stage offset	-8	-7.998036453302973			
[s] Observation start time (MET)	123872204.184000	123871033.0173			
Observation start date	2001-12-04T16:55:40	2001-12-04T16:37:13			
[s] Observation end time (MET)	123886604.184000	123887051.20544			
Observation end date	2001-12-04T20:55:40	2001-12-04T21:04:11			
Read mode	CONTINUOUS	CONTINUOUS			

2.3 Aspect



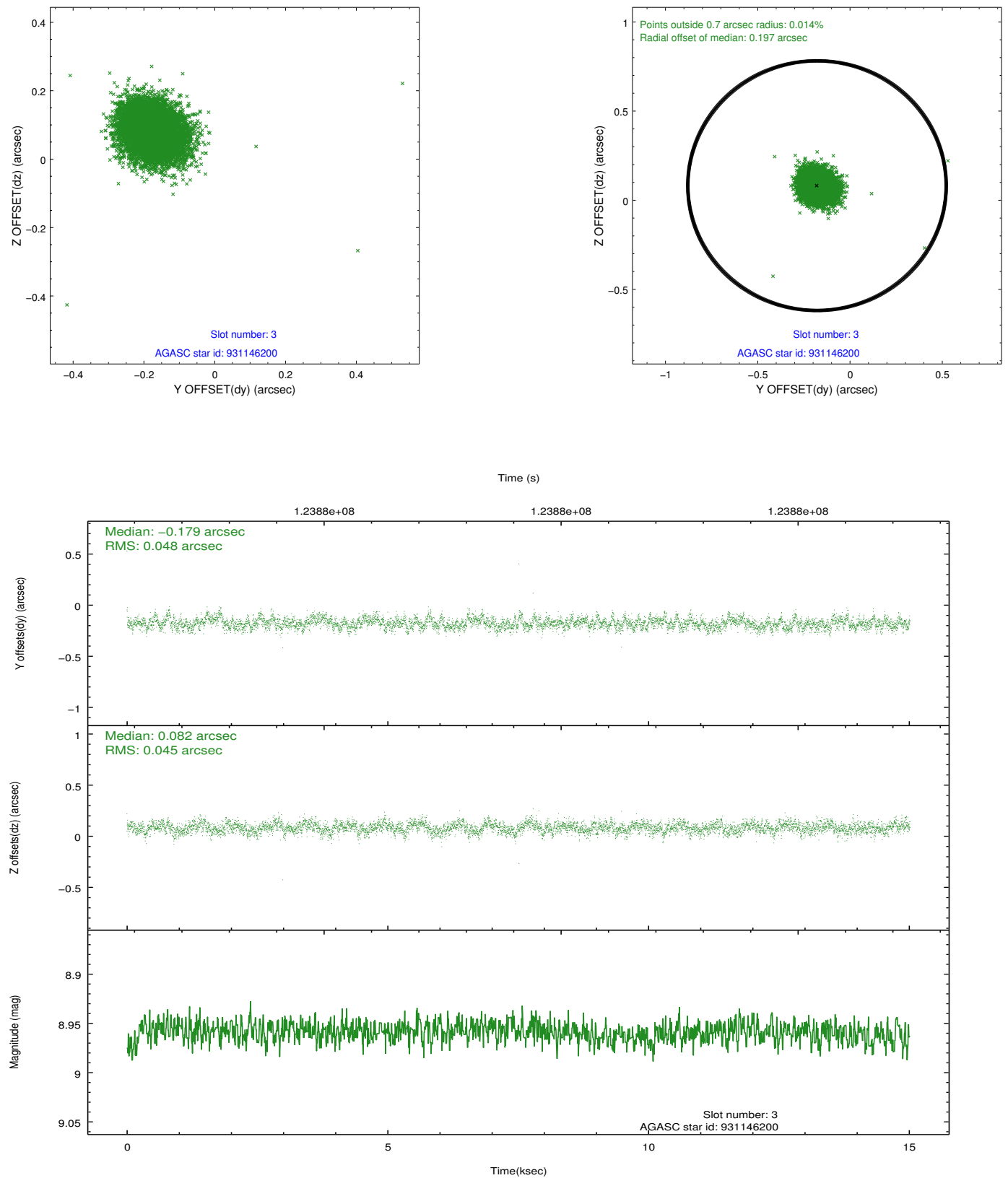


Slot Statistics

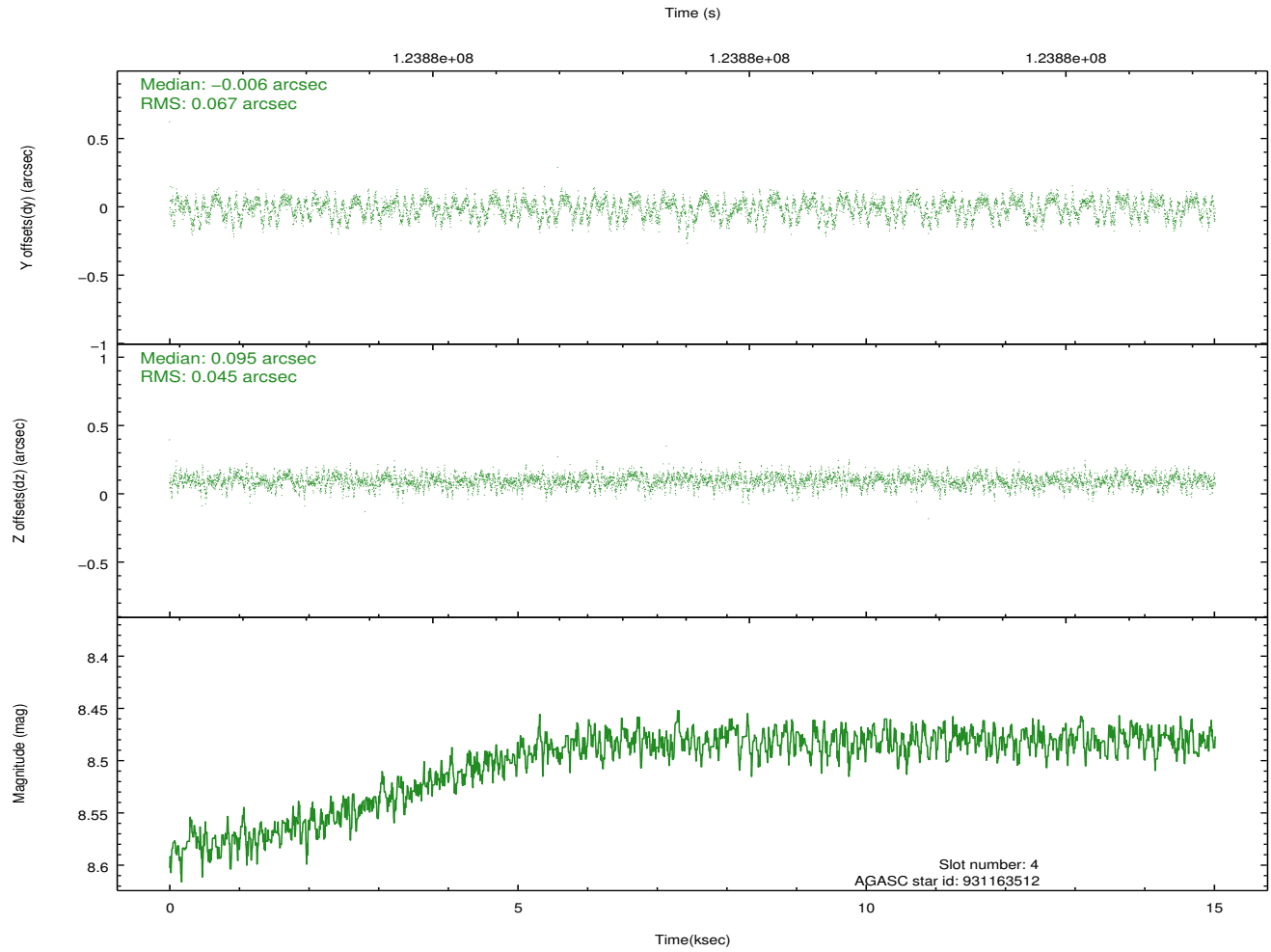
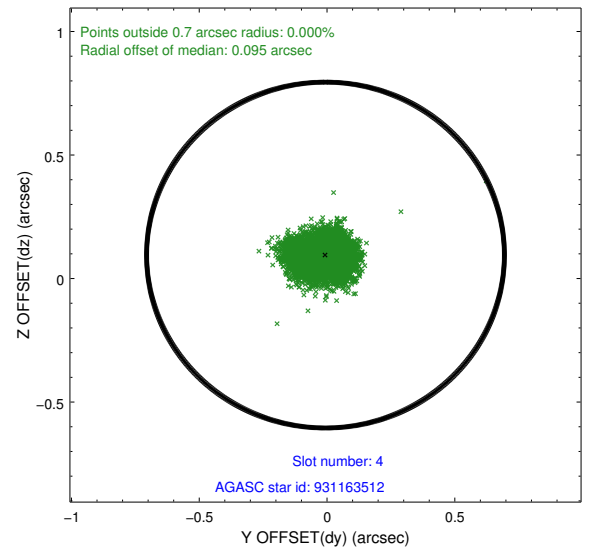
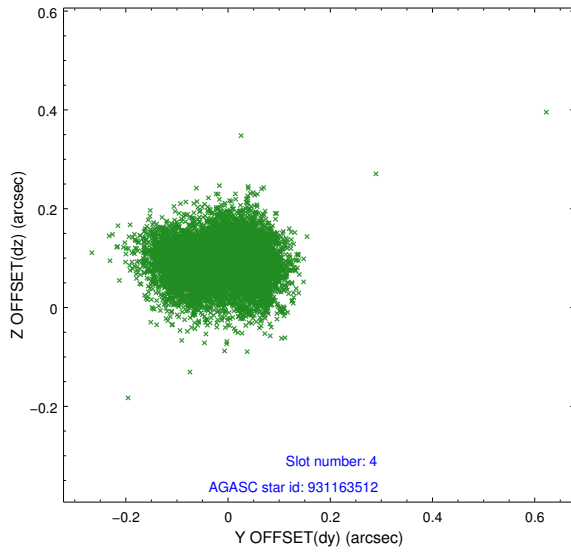
slot	status	id	mag	n_pts	med_dy	med_dz	dr1	dr2	ra	dec	mean_y	mean_z
0	FID	ACIS-S-3	7.34	3661	-0.083	0.032	0.010	0.015	0.000000	0.000000	57.62	-2021.97
1	FID	ACIS-S-4	7.18	3661	0.064	0.029	0.008	0.014	0.000000	0.000000	2158.03	15.06
2	FID	ACIS-S-5	7.23	3660	-0.009	-0.052	0.007	0.012	0.000000	0.000000	-1807.86	9.22
3	GUIDE	931146200	8.96	7320	-0.179	0.082	0.069	0.112	110.586199	-31.643611	694.70	-1480.91
4	GUIDE	931163512	8.49	7323	-0.006	0.095	0.087	0.136	110.894384	-31.299941	2215.68	-1144.12
5	GUIDE	931019296	8.66	7323	0.083	-0.057	0.063	0.103	109.471771	-31.694370	-2047.91	560.39
6	GUIDE	931160352	8.63	7323	-0.073	-0.070	0.057	0.091	110.268138	-30.864891	1743.34	1297.10
7	GUIDE	931005504	9.34	7319	0.180	-0.048	0.077	0.125	109.438314	-31.669733	-2070.61	694.39

2.4 Star Slots

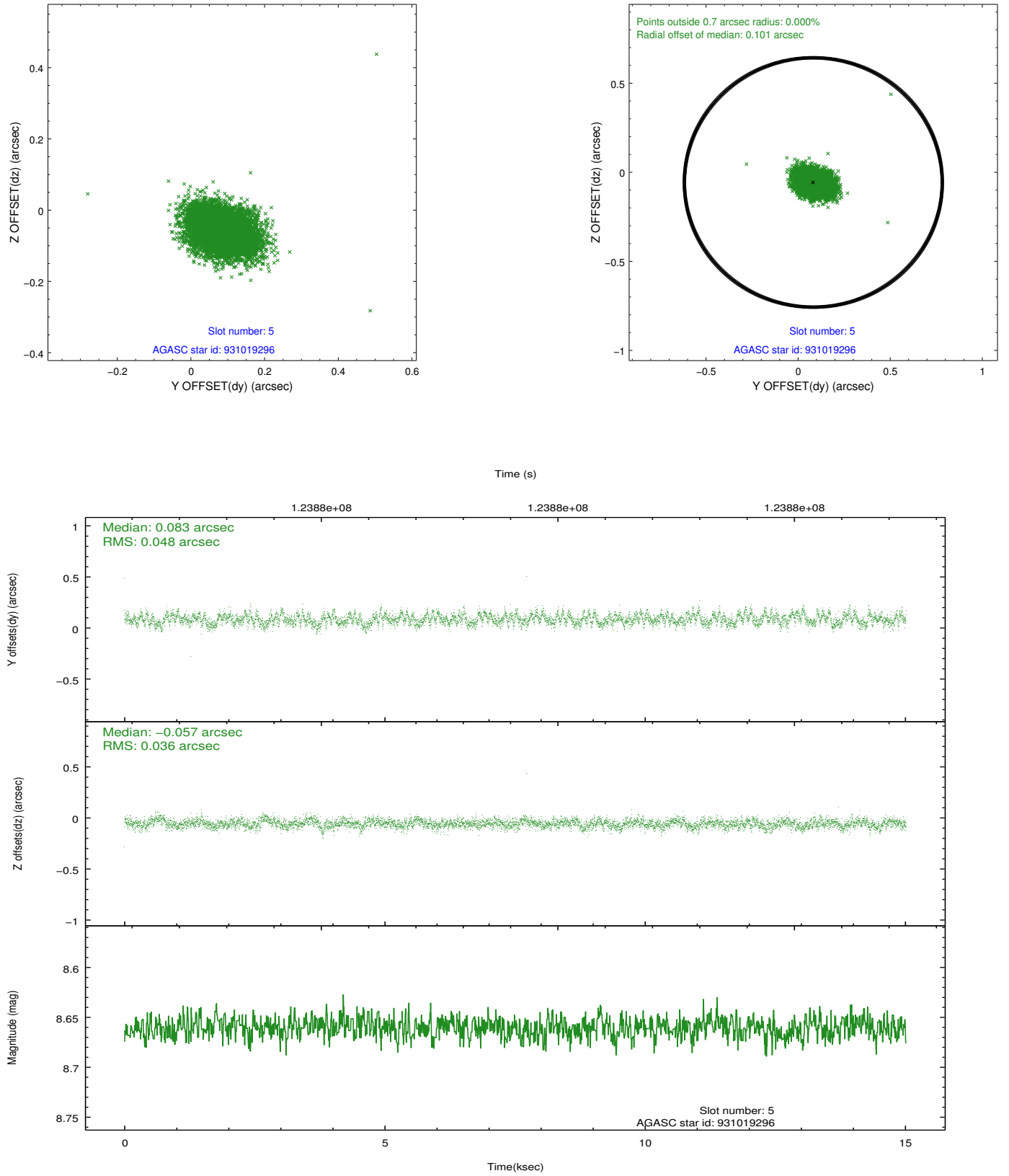
2.4.1 Slot 3



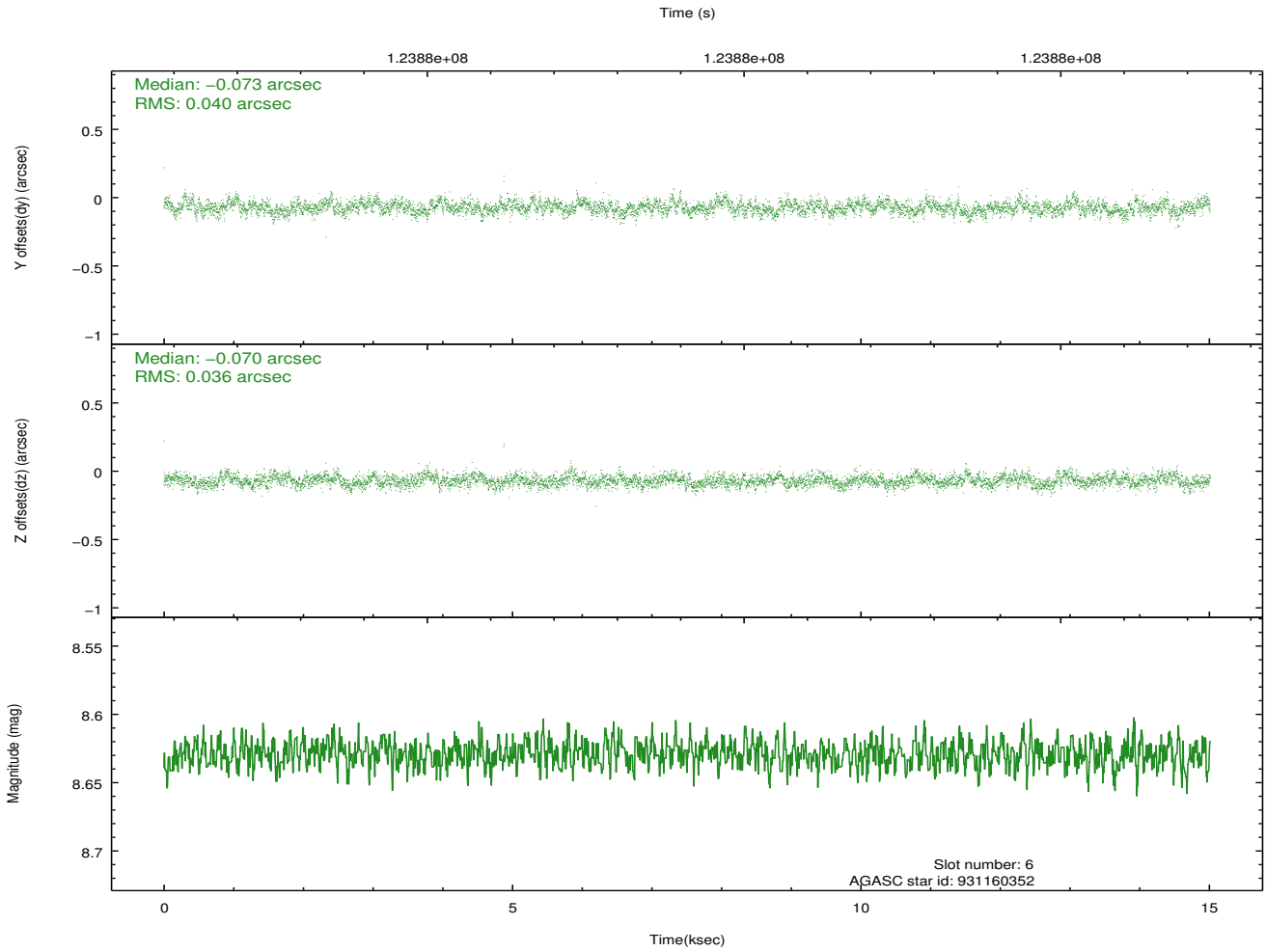
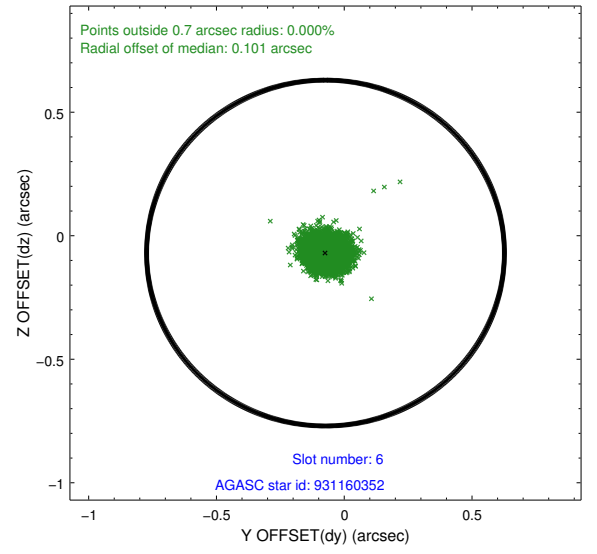
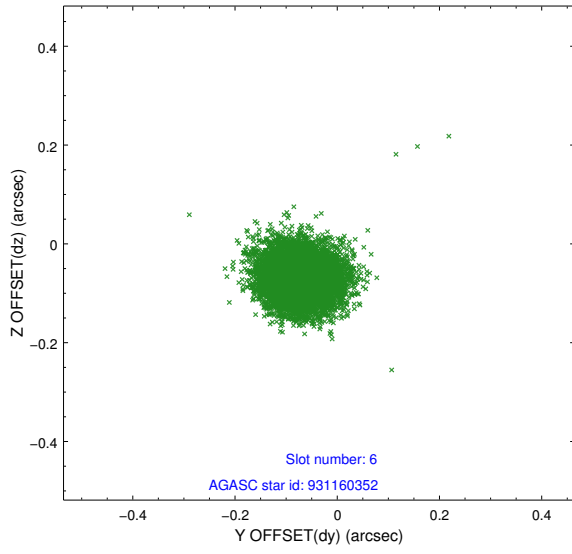
2.4.2 Slot 4



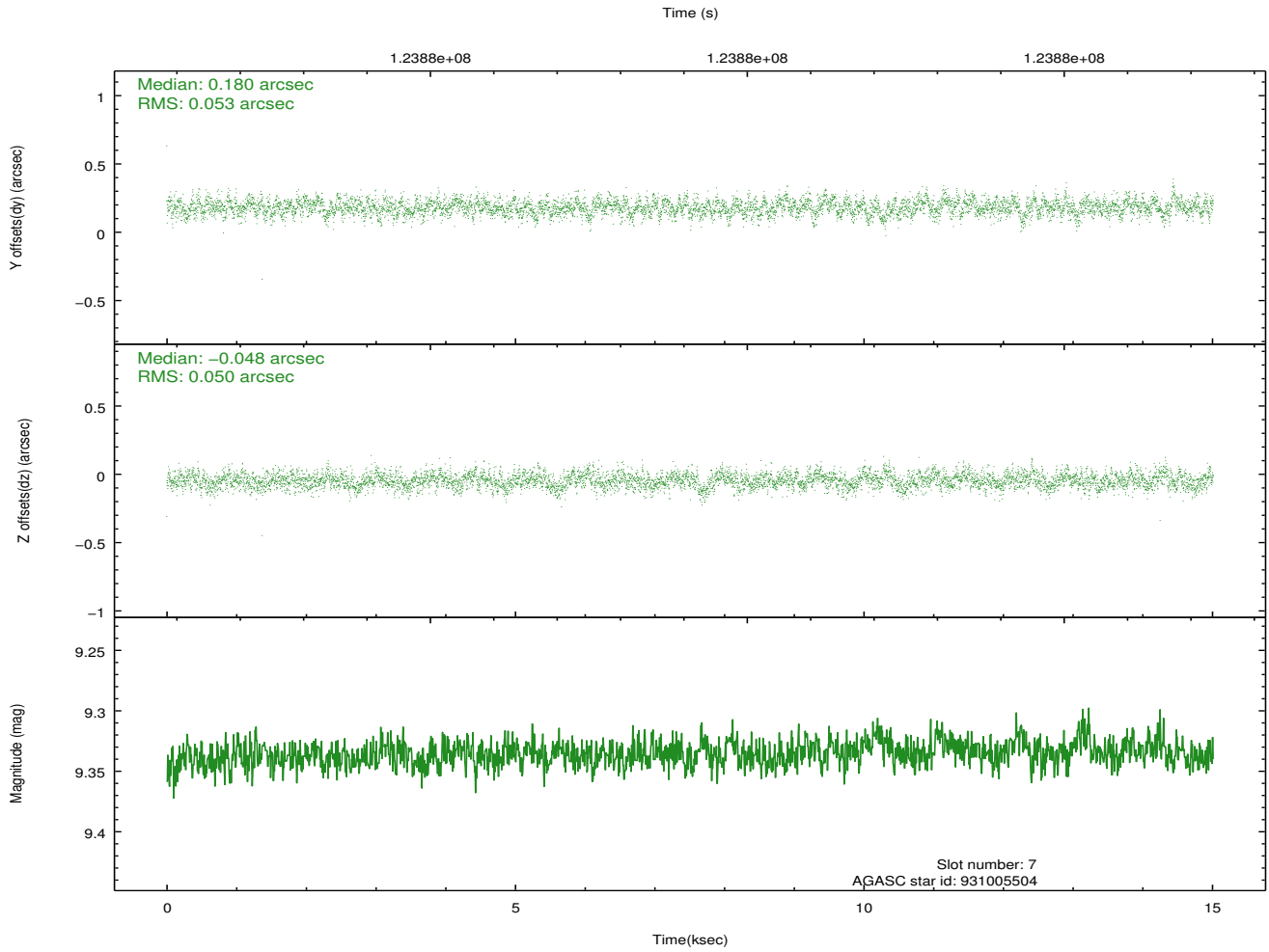
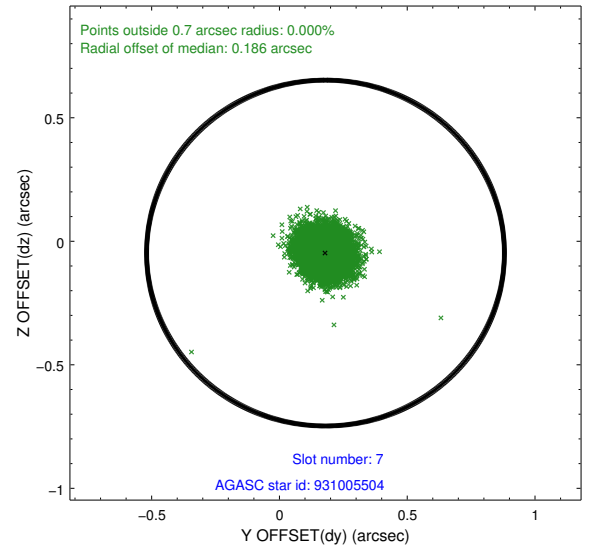
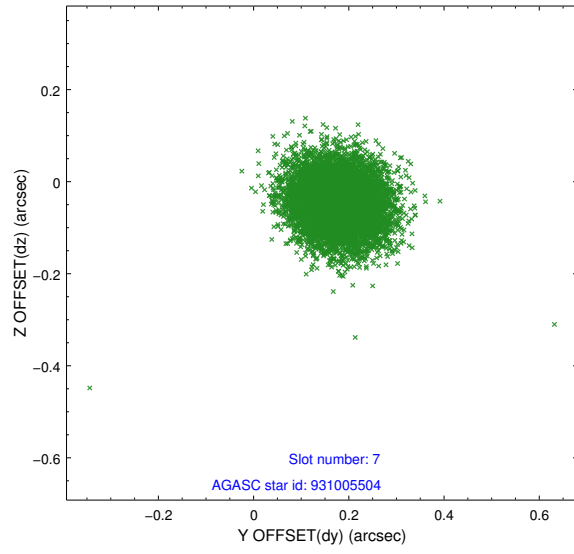
2.4.3 Slot 5



2.4.4 Slot 6

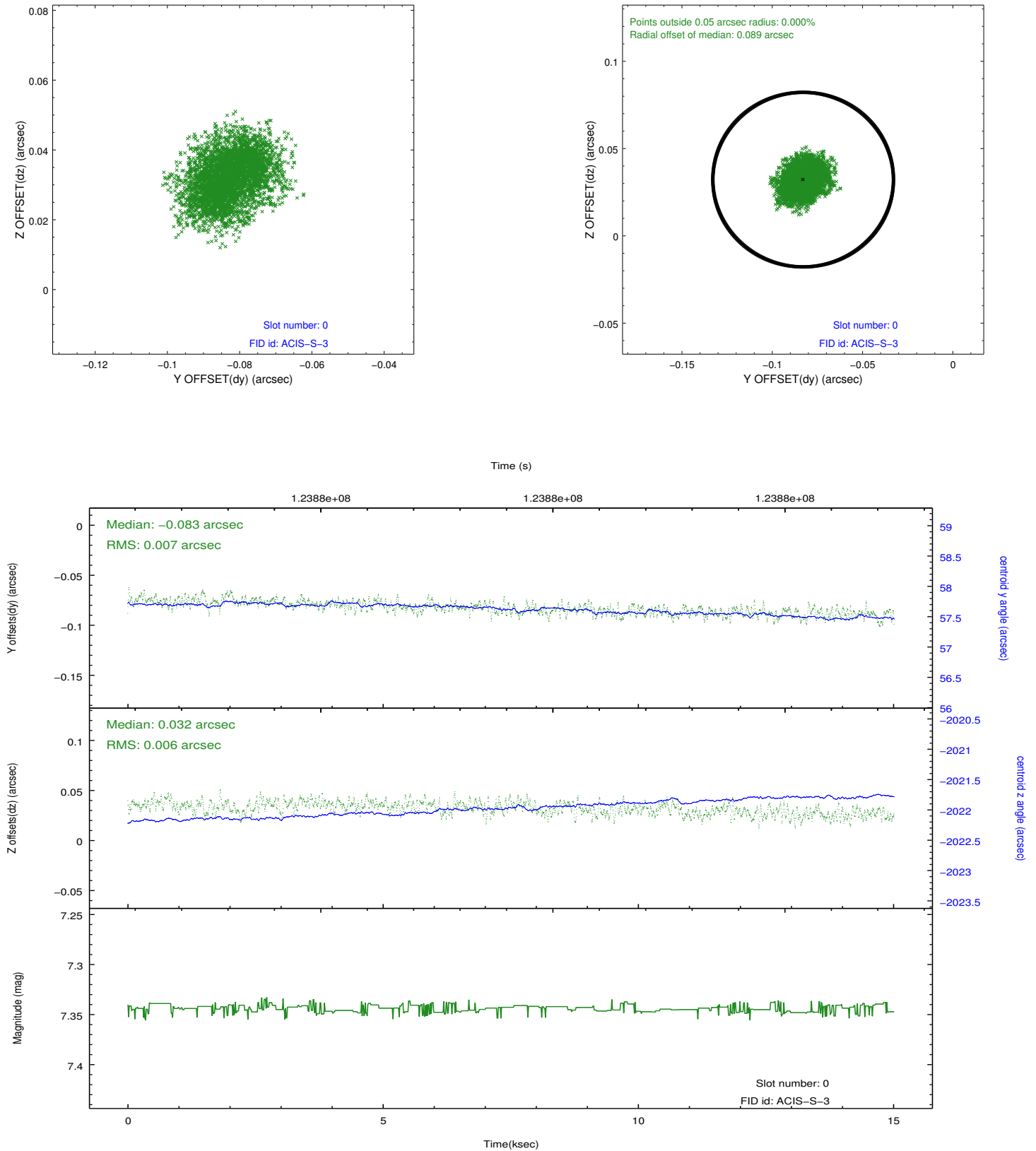


2.4.5 Slot 7

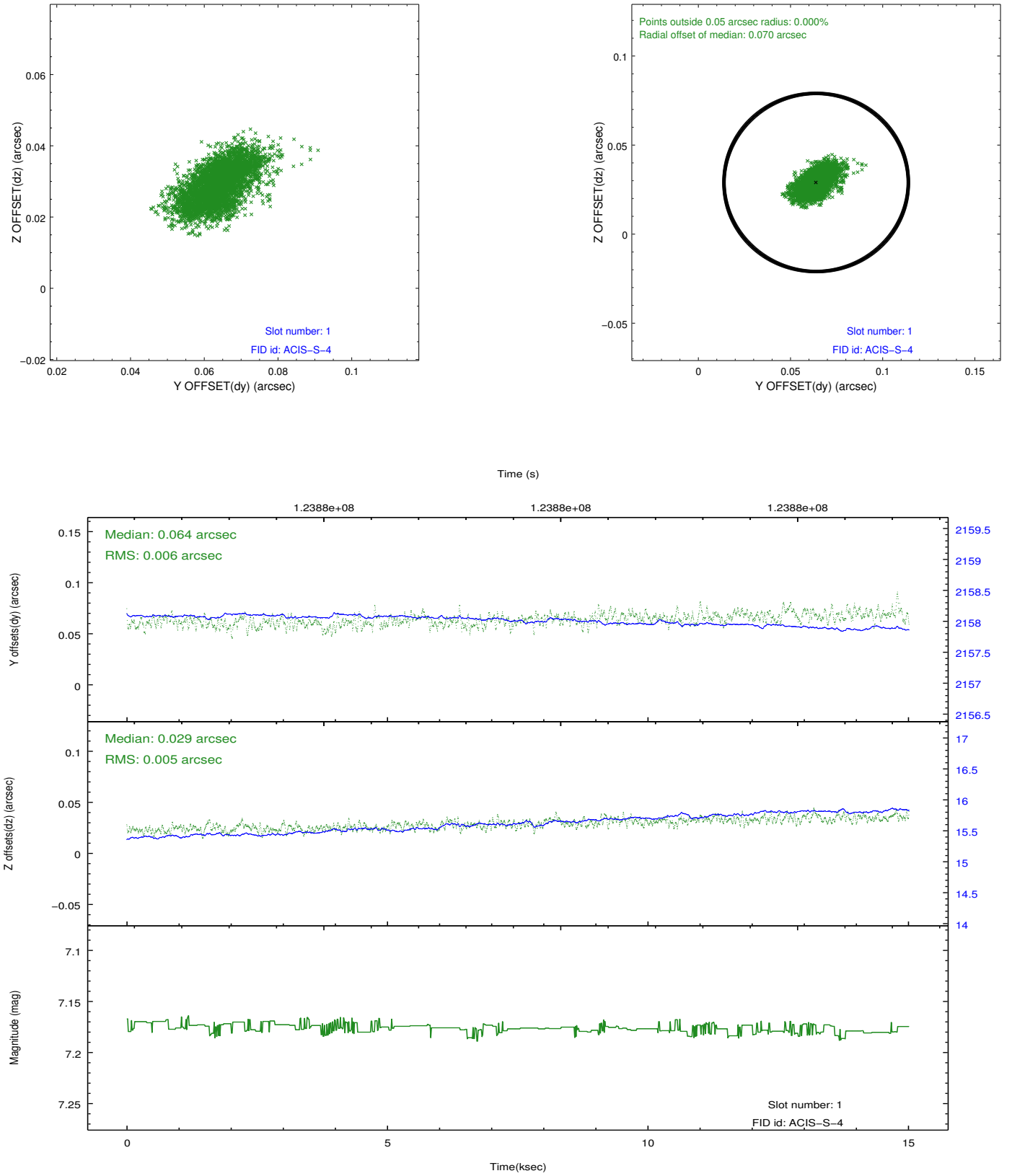


2.5 FID Slots

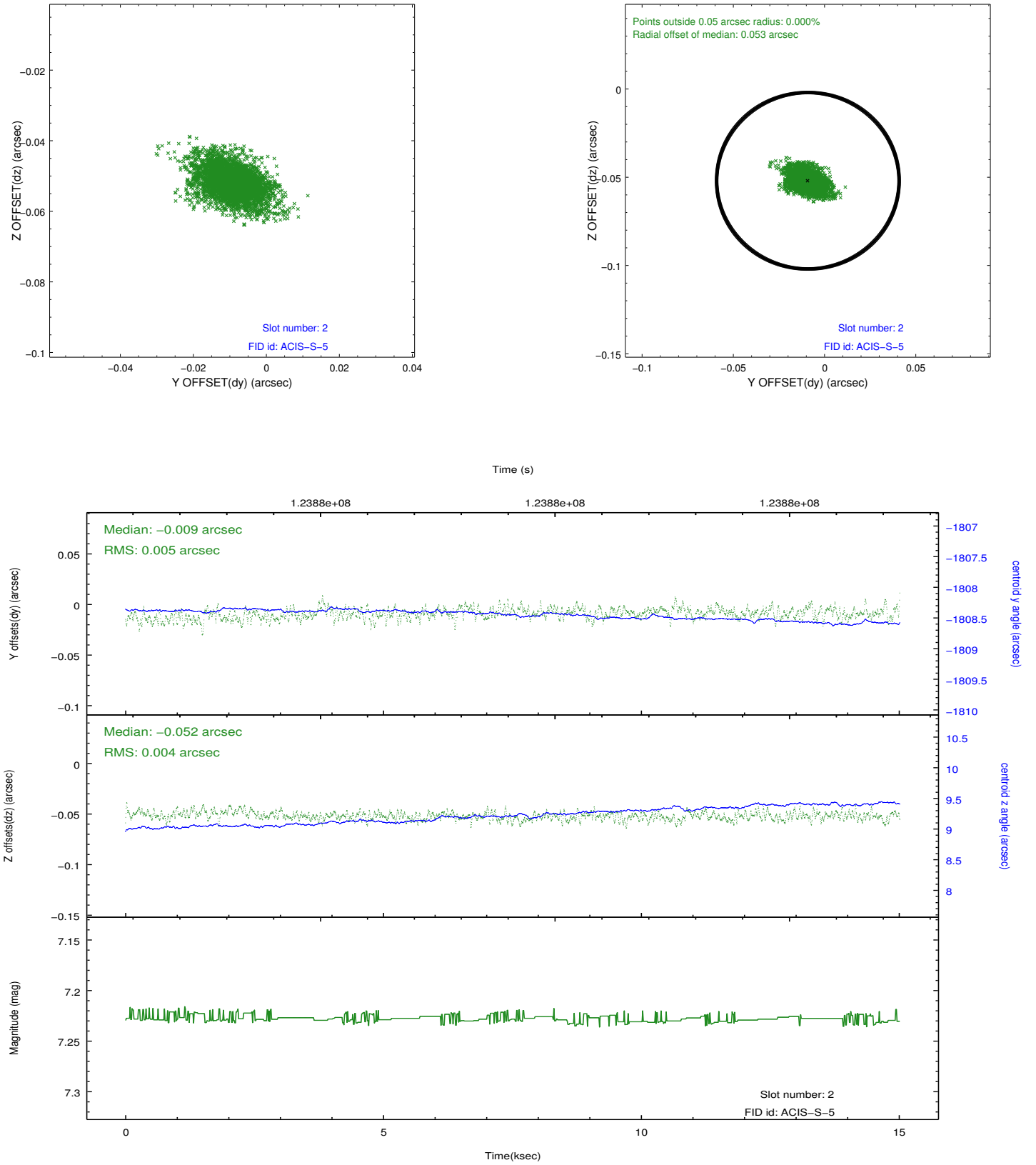
2.5.1 Slot 0



2.5.2 Slot 1



2.5.3 Slot 2



A Summary

A.1 Status

V&V Scientist	Joy Nichols
V&V Date (YYYY-MM-DD)	2012.10.04
V&V Edition	1
V&V Disposition and Status	OK
V&V Charge Time	15.011

A.2 Comments