

# V&V Reference Report

## L2 ASCDS Version : 7.6.9

Observation 2763 - L2 Version 001  
Chandra X-Ray Center

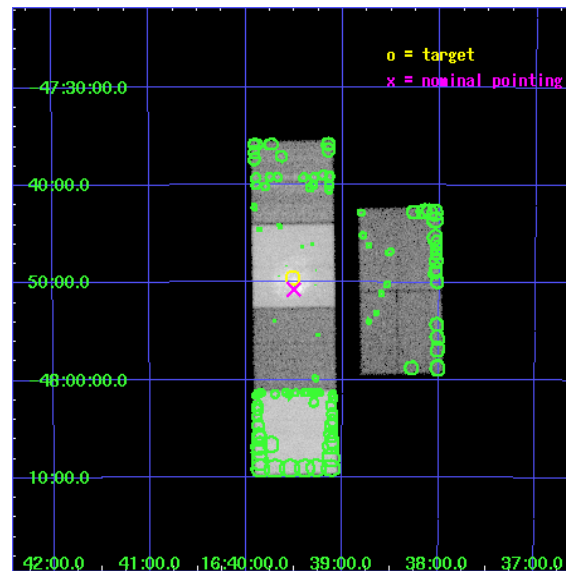
L2 Processing Date : Sep 28 2006

## Contents

<b>1</b>	<b>Front</b>	<b>2</b>
<b>2</b>	<b>OBI</b>	<b>3</b>
2.1	OBI . . . . .	3
2.1.1	Images . . . . .	3
2.1.2	Bias . . . . .	3
2.1.3	Parameters . . . . .	4
2.1.4	Events . . . . .	4
2.2	Compared Parameters . . . . .	5
2.3	Aspect . . . . .	6
2.4	Star Slots . . . . .	9
2.4.1	Slot 3 . . . . .	9
2.4.2	Slot 4 . . . . .	10
2.4.3	Slot 5 . . . . .	11
2.4.4	Slot 6 . . . . .	12
2.4.5	Slot 7 . . . . .	13
2.5	FID Slots . . . . .	14
2.5.1	Slot 0 . . . . .	14
2.5.2	Slot 1 . . . . .	15
2.5.3	Slot 2 . . . . .	16
<b>3</b>	<b>Point Sources</b>	<b>17</b>
<b>A</b>	<b>Summary</b>	<b>18</b>
A.1	Status . . . . .	18
A.2	Comments . . . . .	18

# 1 Front

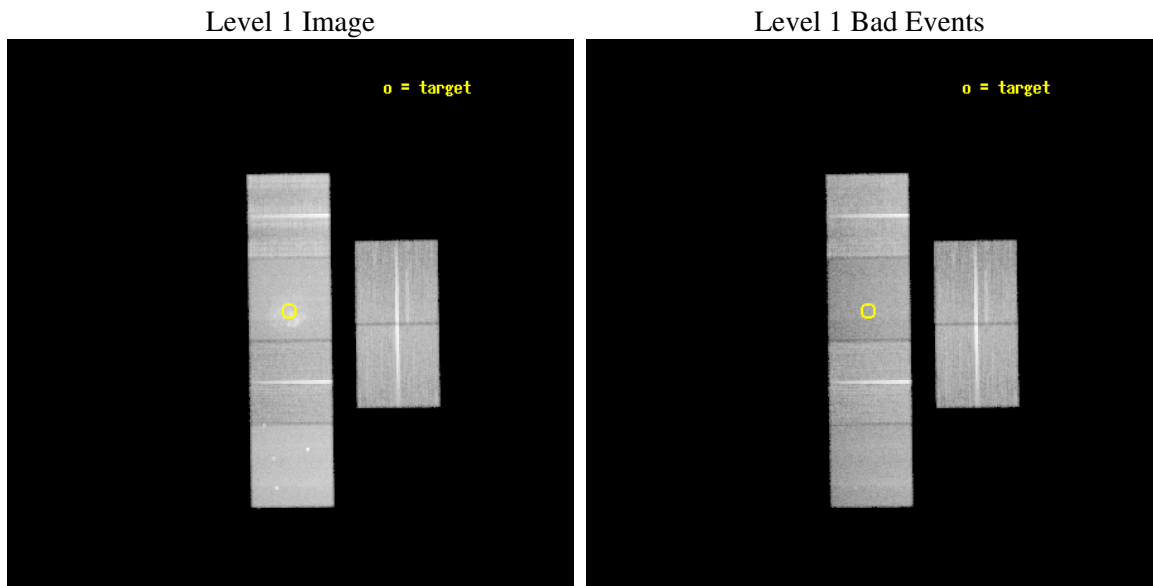
seq_num	500213
obs_id	2763
title	YOUNG EJECTA-DOMINATED GALACTIC SUPERNOVA REMNANTS
observer	Dr. Cara Rakowski
object	G337.2 - 0.7
dtcycle	0
cycle	P
ra_targ	249.879167
dec_targ	-47.825
ra_nom	249.87616050814
dec_nom	-47.845680772969
roll_nom	269.19747815531
revision	2
ontime	49462.399815738
livetime	48836.07712659
ontime2	49459.158845454
ontime3	49449.43595466
ontime5	49462.399815738
ontime6	49462.399815738
ontime7	49462.399815738
ontime8	49459.158825547
l2events	456641



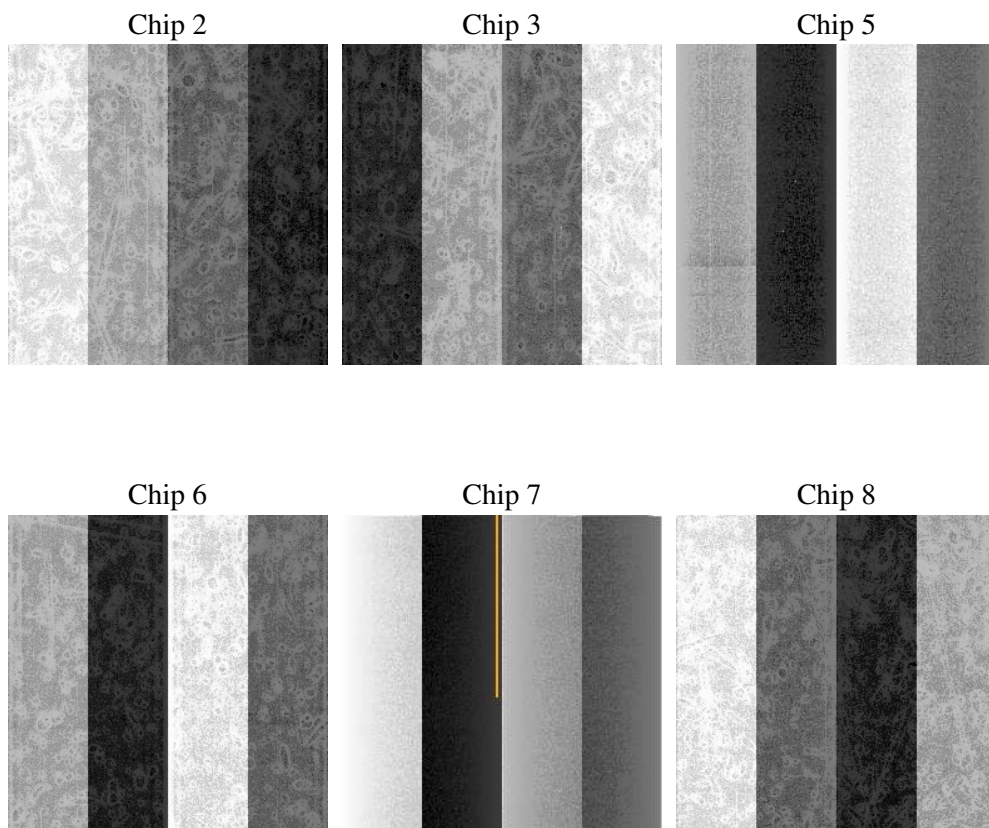
## 2 OBI

### 2.1 OBI

#### 2.1.1 Images



#### 2.1.2 Bias



### 2.1.3 Parameters

obi_num	1
ascdsver	7.6.9
caldsver	3.2.3
date	2006-09-28T19:32:49
revision	2

sched_exp_time	49500.000000
ontime	49467.399419963
ontime2	49464.15844968
ontime3	49454.435558885
ontime5	49467.399419963
ontime6	49467.399419963
ontime7	49467.399419963
ontime8	49464.158429772
l1events	1798399

### 2.1.4 Events

	ccd 2	ccd 3	ccd 5	ccd 6	ccd 7	ccd 8
level 1 events	266804	241843	348923	258686	326264	355879
rejected events	237109	214030	171687	224368	154926	245605
rejected %	88%	88%	49%	86%	47%	69%

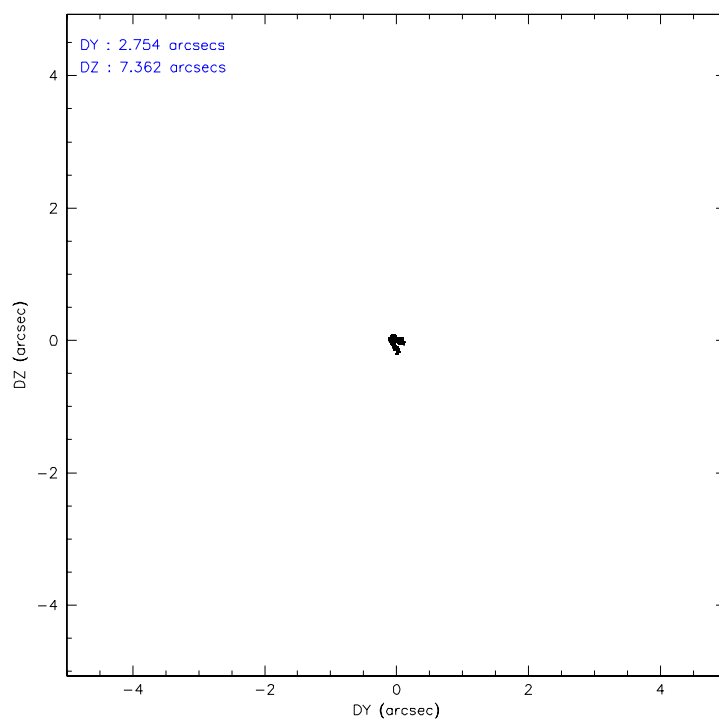
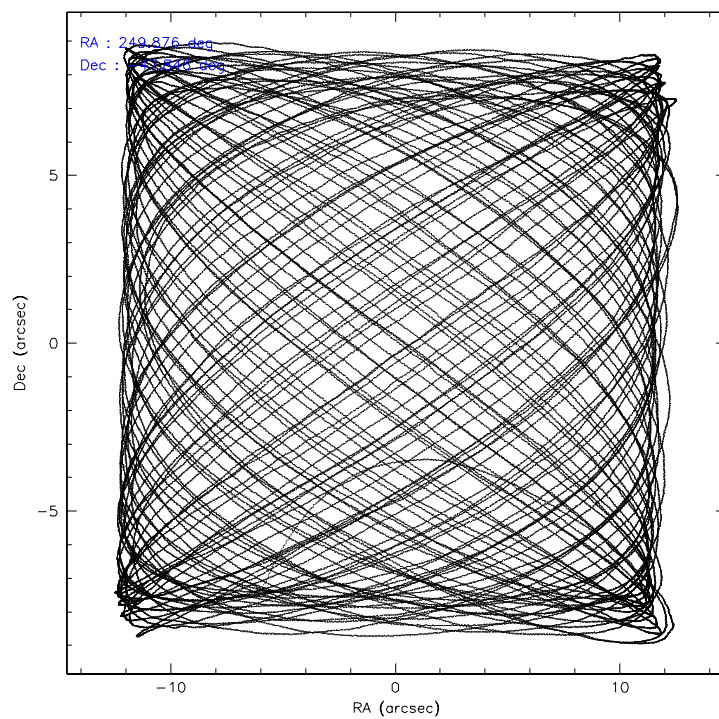
	ccd 2	ccd 3	ccd 5	ccd 6	ccd 7	ccd 8
grade 0 events	12696	11861	12334	15864	16502	41009
	4%	4%	3%	6%	5%	11%
grade 1 events	147	130	270	142	157	354
	0%	0%	0%	0%	0%	0%
grade 2 events	6225	5398	56678	6329	42654	18204
	2%	2%	16%	2%	13%	5%
grade 3 events	2890	2887	5627	3086	11950	15103
	1%	1%	1%	1%	3%	4%
grade 4 events	2998	2815	5265	3029	11648	13688
	1%	1%	1%	1%	3%	3%
grade 5 events	7989	8799	17640	9354	20457	13485
	2%	3%	5%	3%	6%	3%
grade 6 events	4888	4856	97346	6011	88615	22322
	1%	2%	27%	2%	27%	6%
grade 7 events	228971	205097	153763	214871	134281	231714
	85%	84%	44%	83%	41%	65%

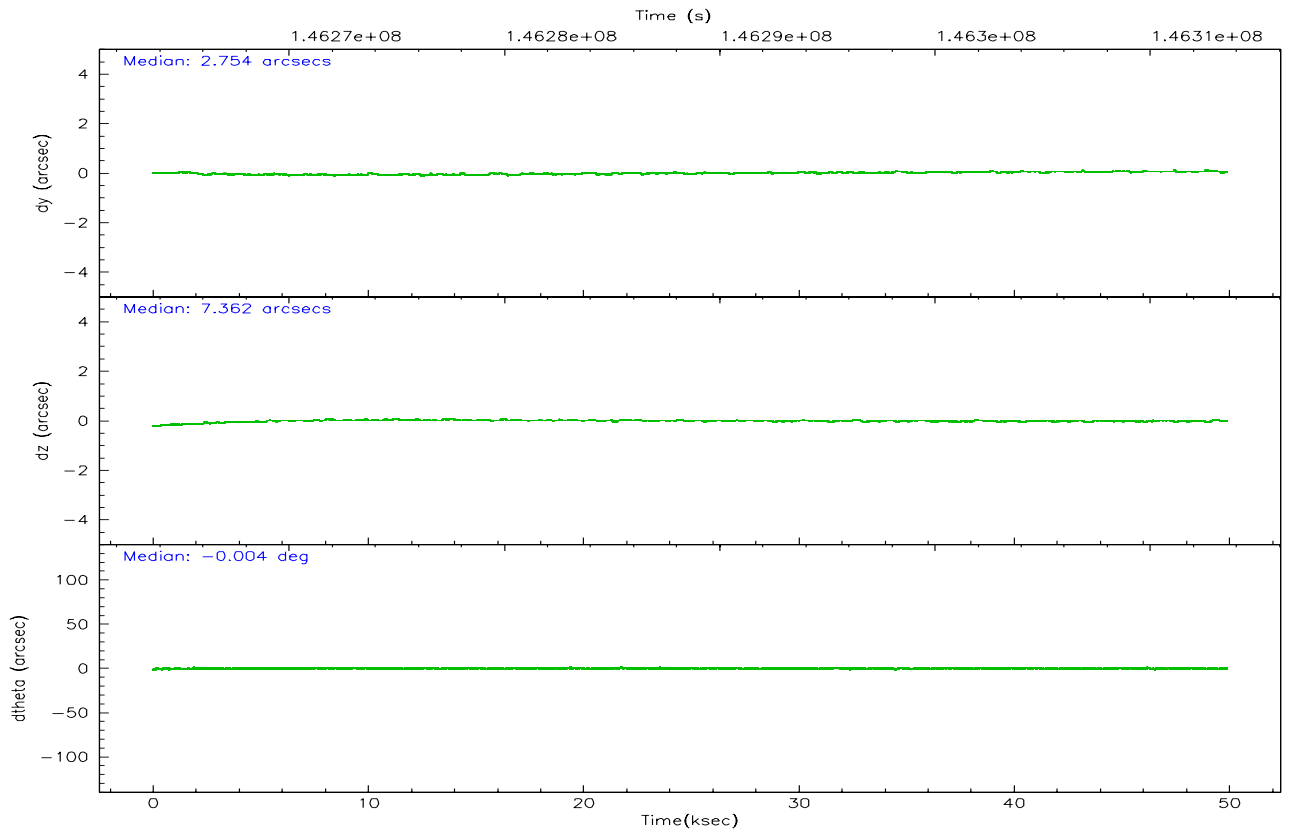
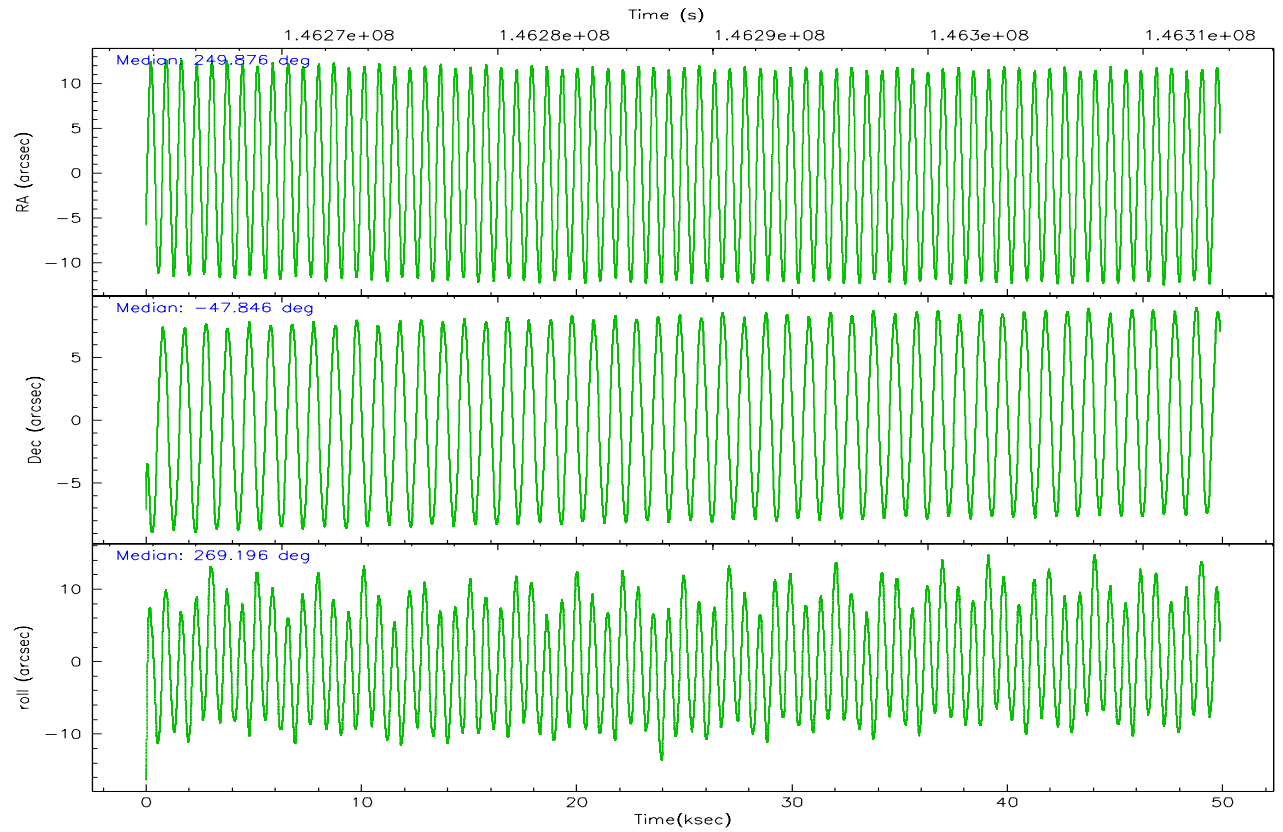


## 2.2 Compared Parameters

Parameter	Planned	Actual	Parameter	Planned	Actual
Instrument	ACIS	ACIS	Obspar format version number	6	6
Detector	ACIS-235678	ACIS-235678	Obspar file type	PREDICTED	ACTUAL
Grating	NONE	NONE	Obspar update status	NONE	UPDATED
Data mode	VFAINT	VFAINT	Number of optional ACIS chips dropped	0	0
Observation mode	POINTING	POINTING	On-chip summing requested	N	N
Pointing RA	249.855906	249.8761605081363	Subarray requested	NONE	NONE
Pointing Dec	-47.822069	-47.84568077296875	Alternating exposures requested	N	N
Pointing Roll	269.025846	269.1974781553091	Primary exposure time	0.000000	3.2
SIM focus pos (mm)	-0.684267	-0.6828225247311905			
SIM defocus (mm)	0	0.001444936568705701			
SIM translation stage pos (mm)	-190.132523	-190.1400660498719			
SIM translation stage offset (mm)	0	0.00754346686406393			
Observation start time	146264071.184000	146263001.98965			
Observation start date	2002-08-20T20:53:27	2002-08-20T20:36:41			
Observation end time	146313571.184000	146314613.81678			
Observation end date	2002-08-21T10:38:27	2002-08-21T10:56:53			
Read mode	TIMED	TIMED			

## 2.3 Aspect



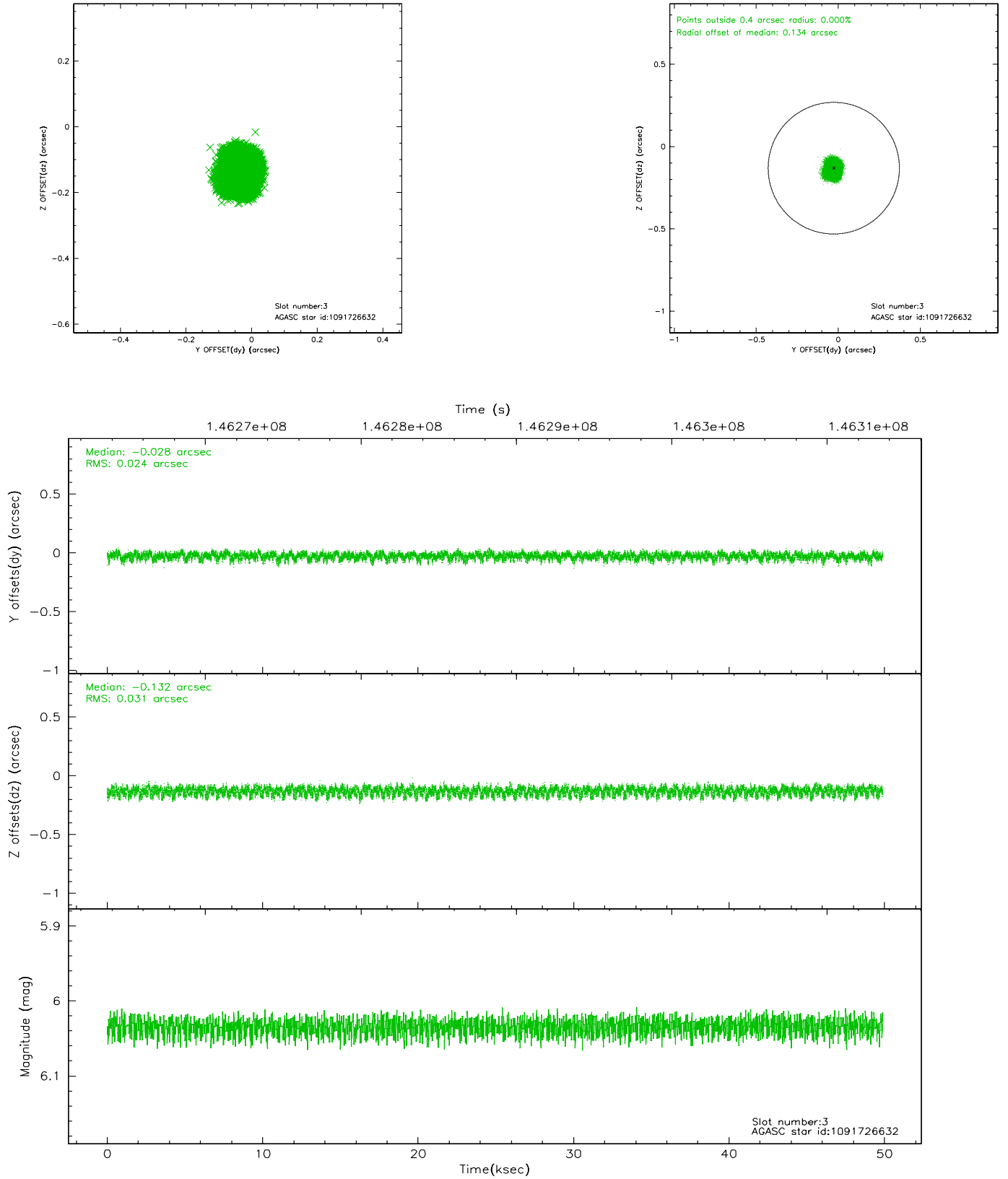


### Slot Statistics

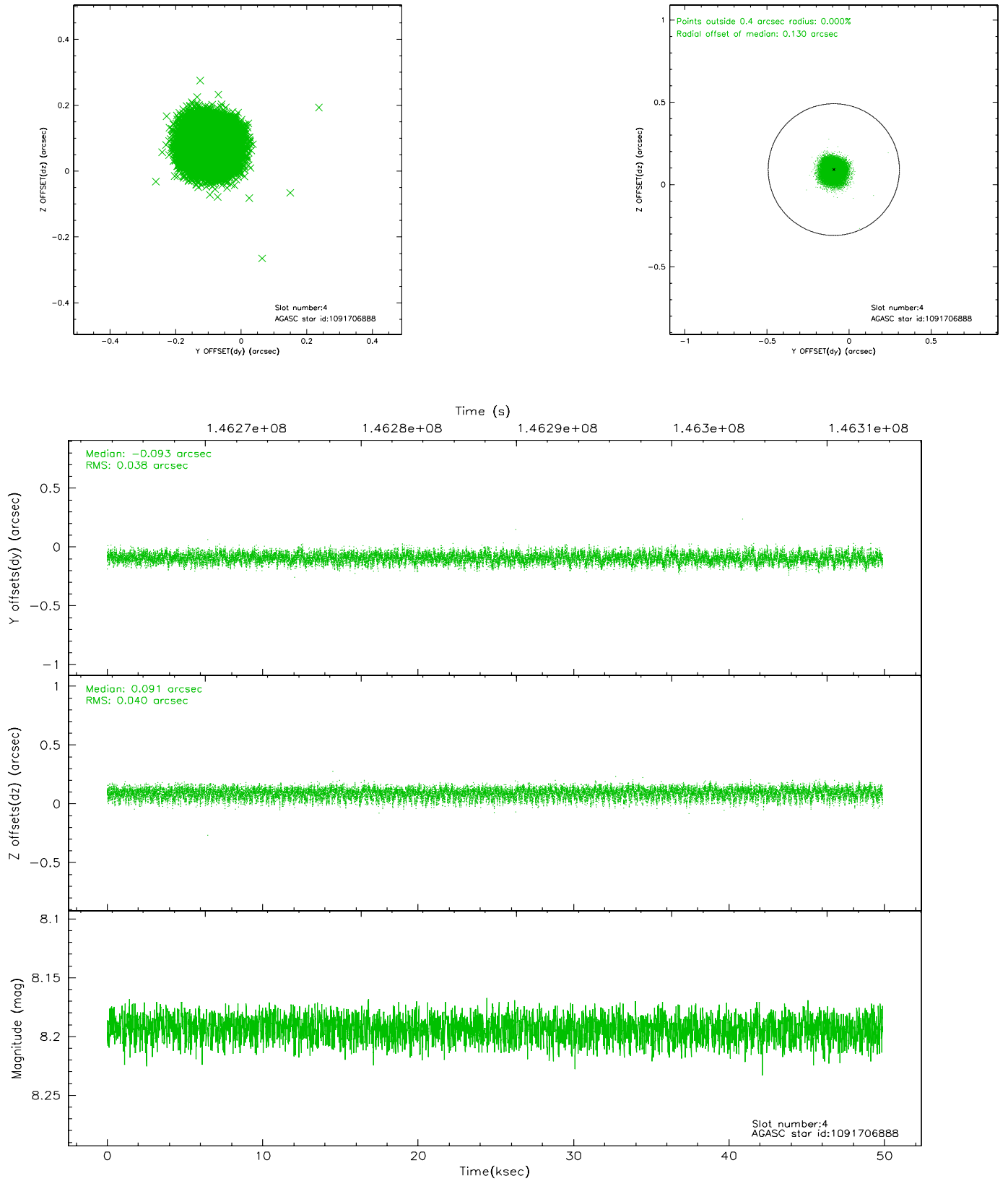
slot	status	id	mag	n_pts	med_dy	med_dz	dr1	dr2	ra	dec	mean_y	mean_z
0	FID	ACIS-S-1	7.19	12171	0.030	-0.011	0.006	0.010	0.000000	0.000000	940.62	-1724.20
1	FID	ACIS-S-2	7.12	12170	-0.041	0.031	0.007	0.012	0.000000	0.000000	-755.36	-1728.64
2	FID	ACIS-S-5	7.24	12170	-0.012	-0.013	0.006	0.011	0.000000	0.000000	-1808.50	173.47
3	GUIDE	1091726632	6.03	24340	-0.028	-0.132	0.042	0.068	250.066238	-48.307770	1739.58	533.70
4	GUIDE	1091706888	8.19	24340	-0.093	0.091	0.060	0.095	249.740289	-47.400823	-1512.06	-306.89
5	GUIDE	1091709768	7.71	24339	0.024	-0.076	0.050	0.083	249.435228	-47.706899	-395.19	-1025.54
6	GUIDE	1091704824	9.14	24329	-0.042	-0.106	0.069	0.110	249.173141	-47.336759	-1712.06	-1694.78
7	GUIDE	1091871072	9.21	24317	0.141	0.225	0.076	0.123	250.608262	-48.415206	2112.55	1834.60

## 2.4 Star Slots

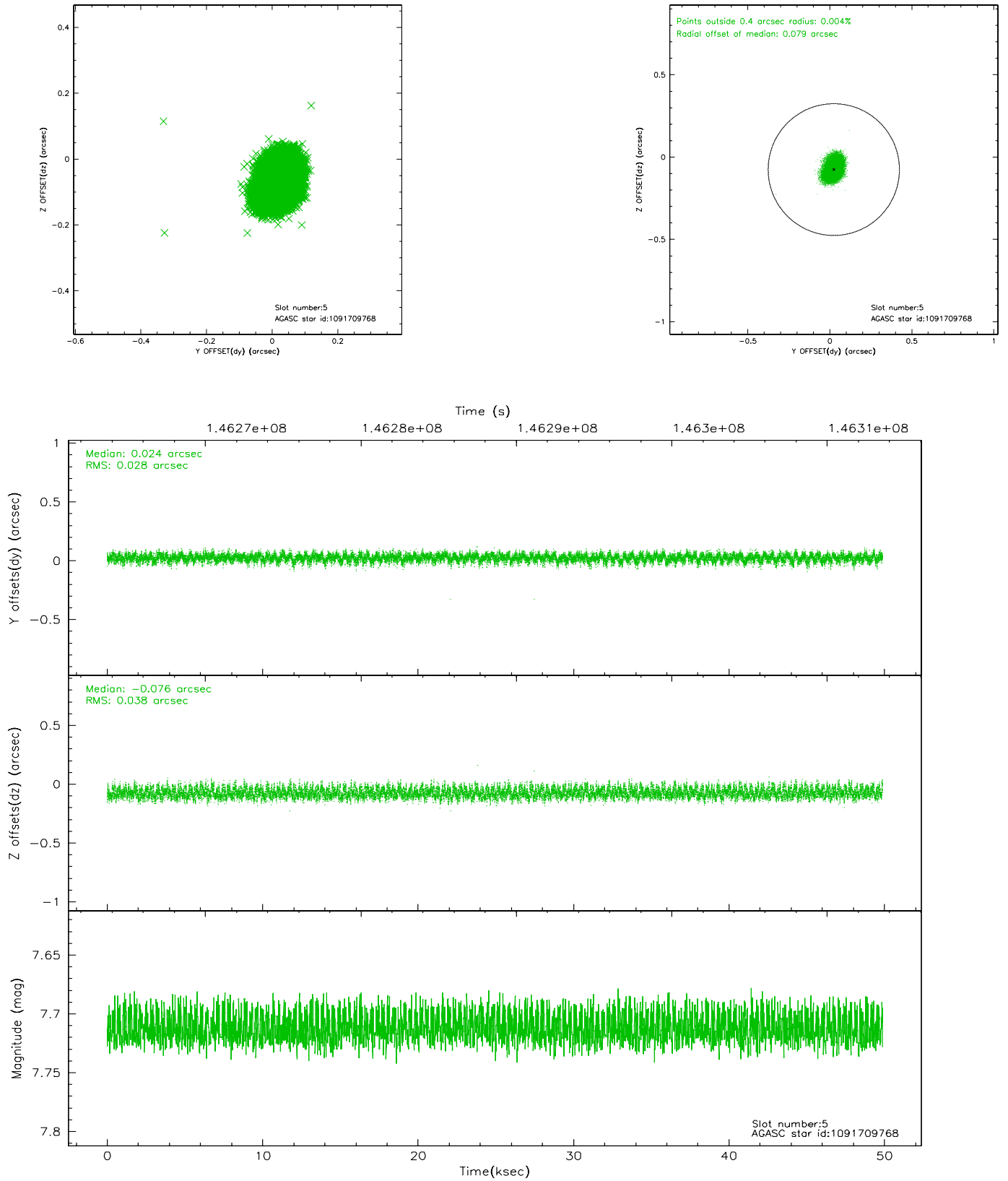
### 2.4.1 Slot 3



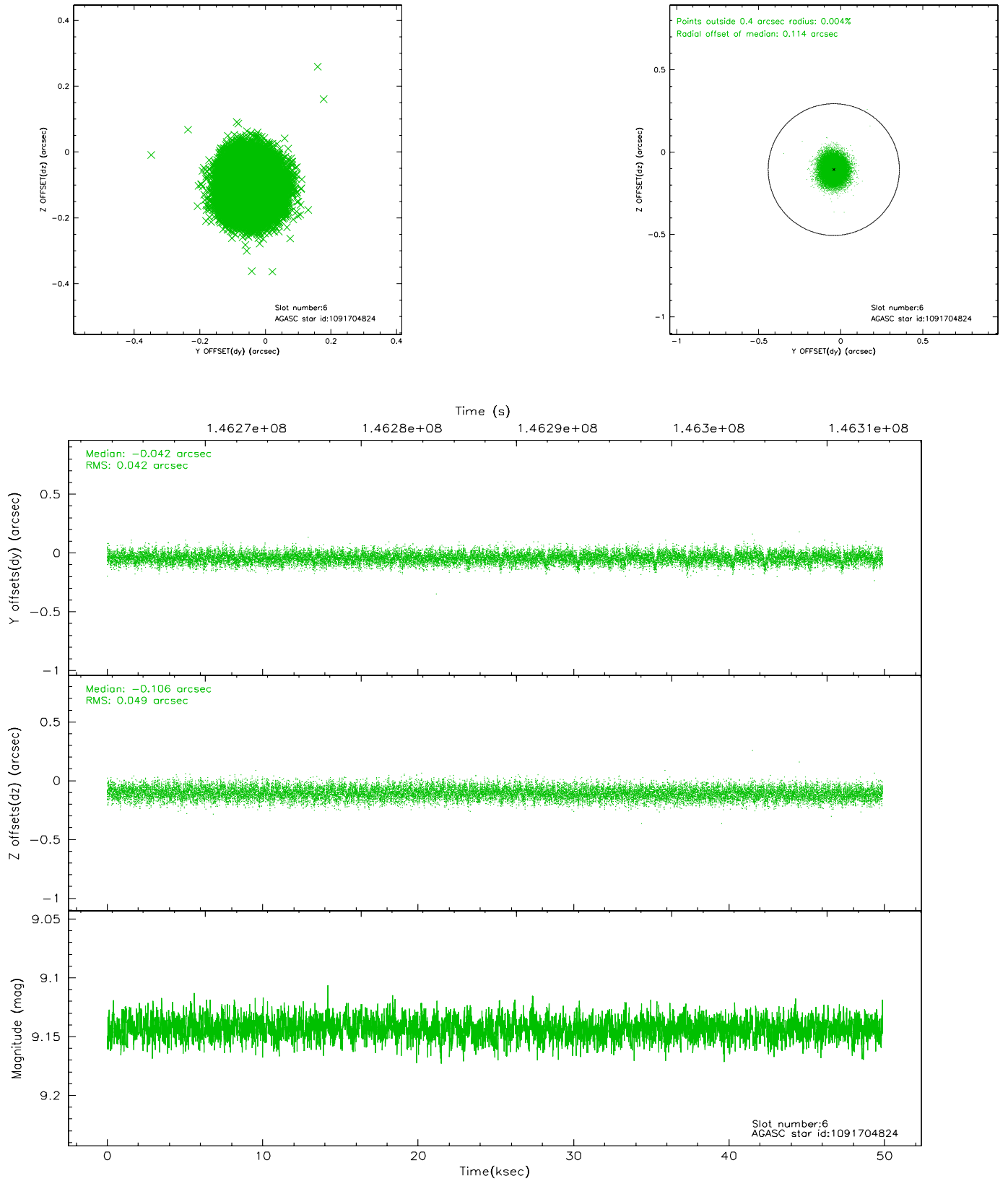
## 2.4.2 Slot 4



### 2.4.3 Slot 5

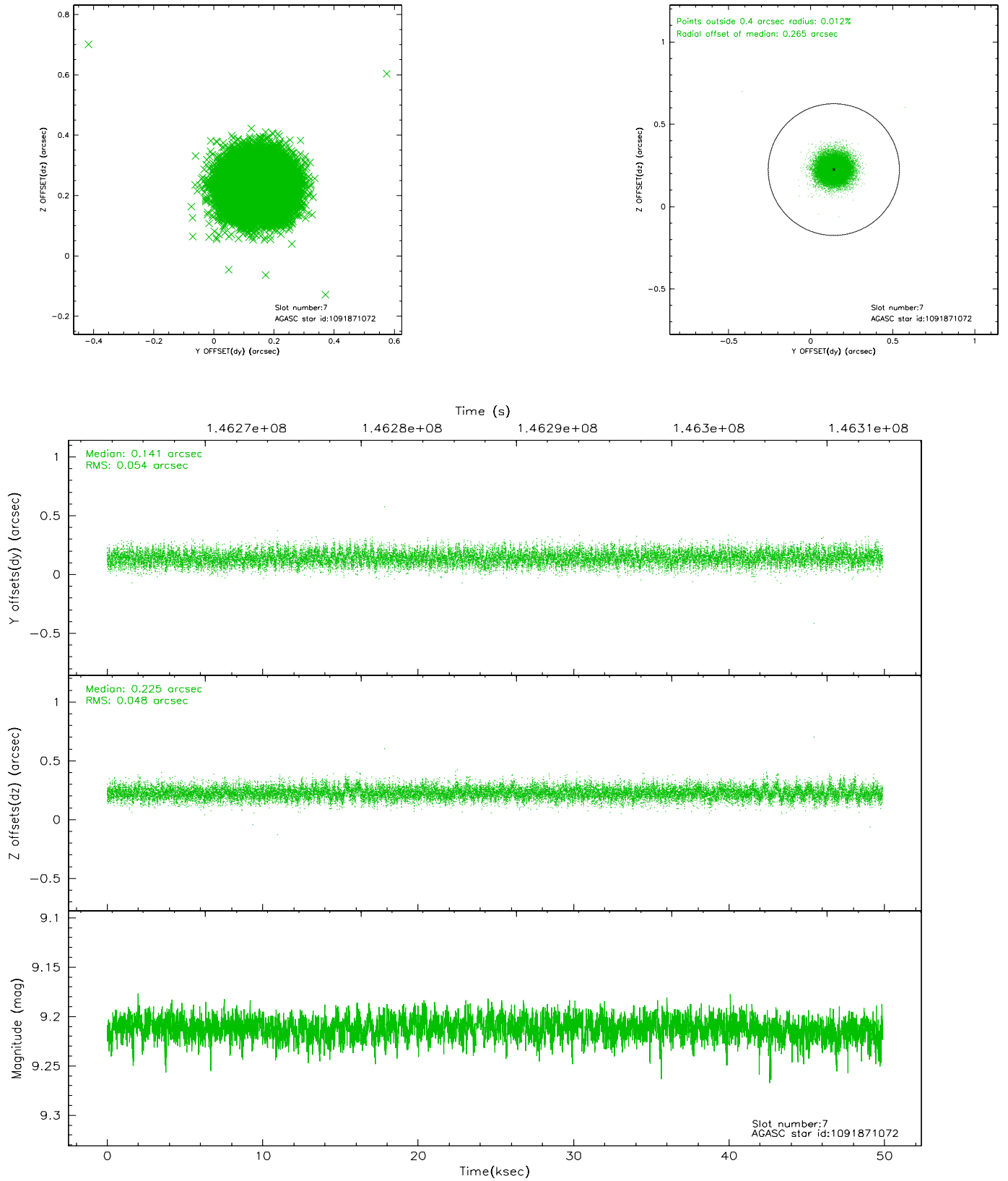


## 2.4.4 Slot 6



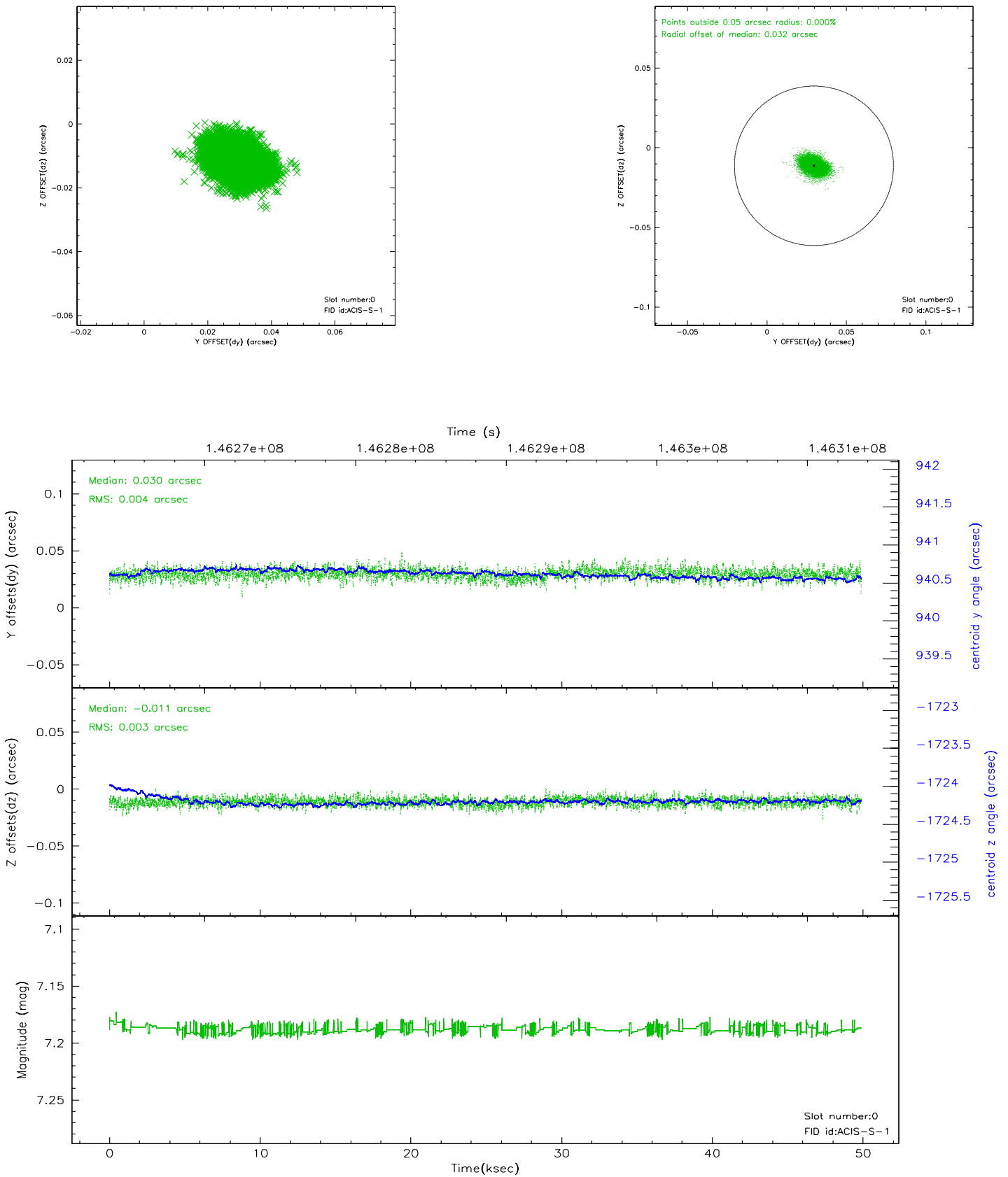


## 2.4.5 Slot 7

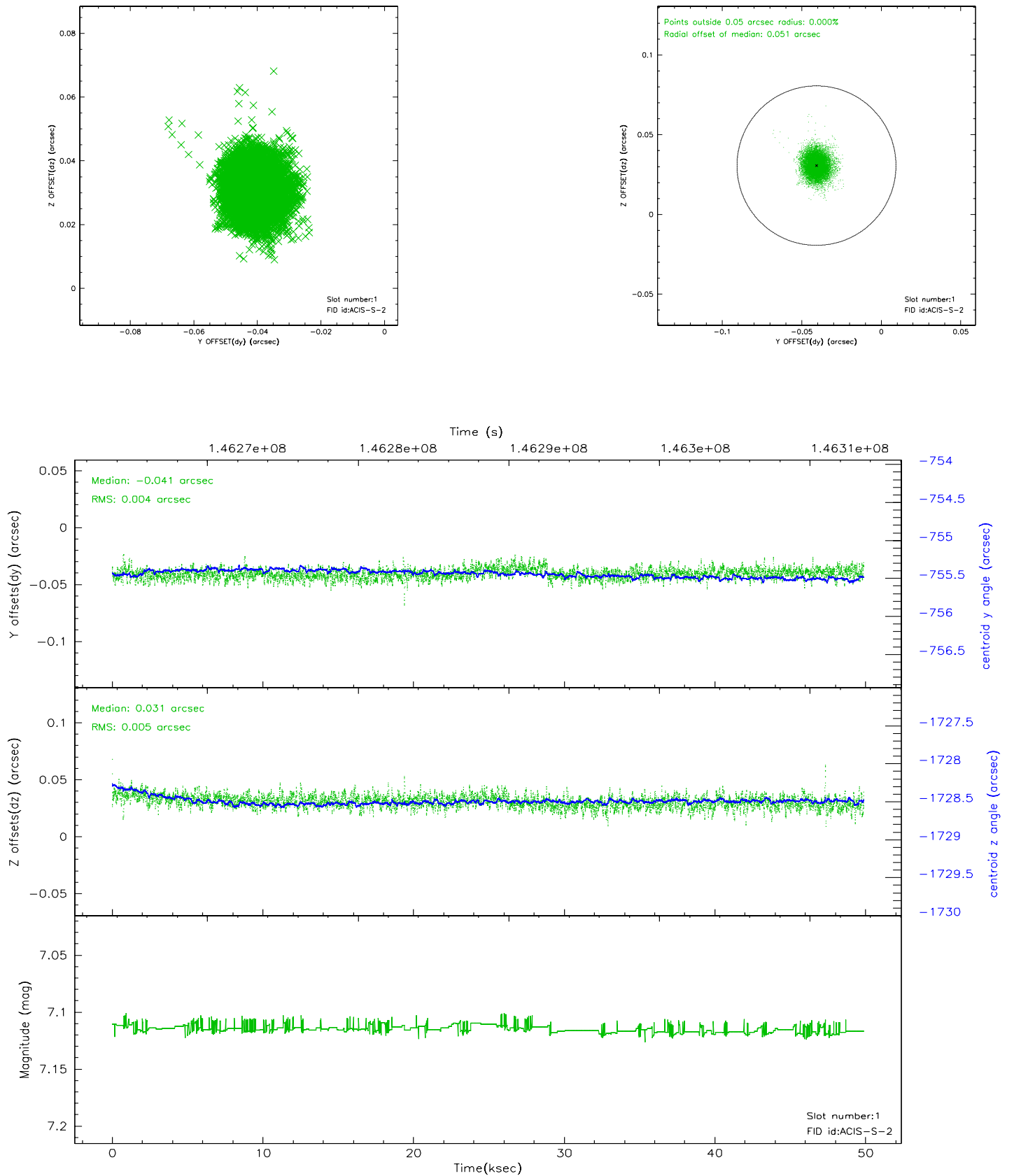


## 2.5 FID Slots

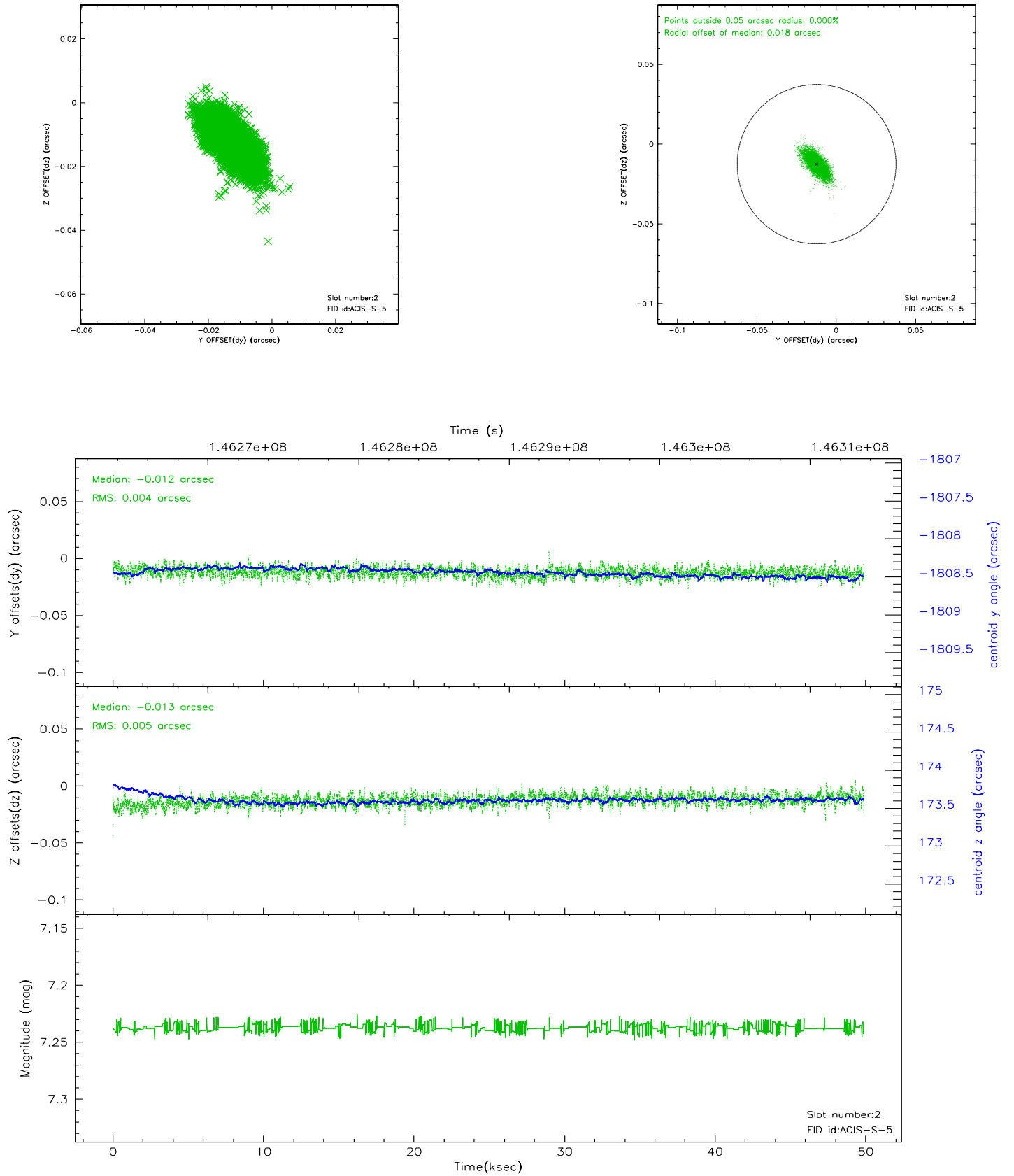
### 2.5.1 Slot 0



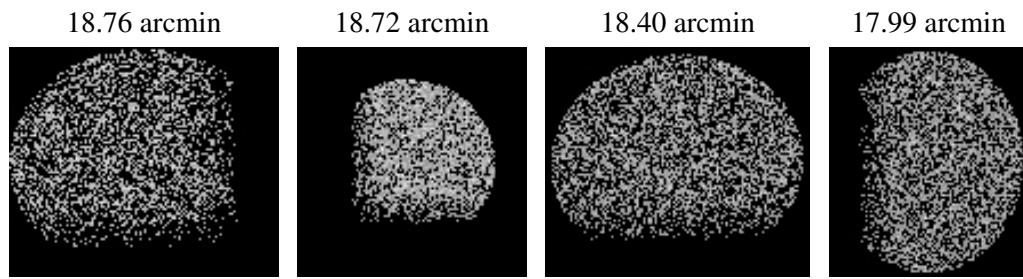
## 2.5.2 Slot 1



### 2.5.3 Slot 2



### 3 Point Sources



# A Summary

## A.1 Status

V&V Scientist	Jen Lauer
V&V Date (YYYY-MM-DD)	2006.09.29
V&V Edition	1
V&V Disposition and Status	OK
V&V Charge Time	49.462

## A.2 Comments

Roll preference met.

Focal plane temperature is warmer than -118.7 C degrees during the first 10 ksec of this observation. The ACIS spectral response calibration for the front-illuminated chips is less accurate at these warmer temperatures than it is at -119.7 C. The back-illuminated chips are not affected at the focal plane temperatures recorded for this observation. Users whose science objectives depend on the most accurate spectral response (i.e.: fitting line-rich spectra) may notice an effect. Users whose science objectives do not depend on the most accurate spectral response should not notice an effect.