

# V&V Reference Report

## L2 ASCDS Version : 8.4.5

Observation 3484 - L2 Version 3  
Chandra X-Ray Center

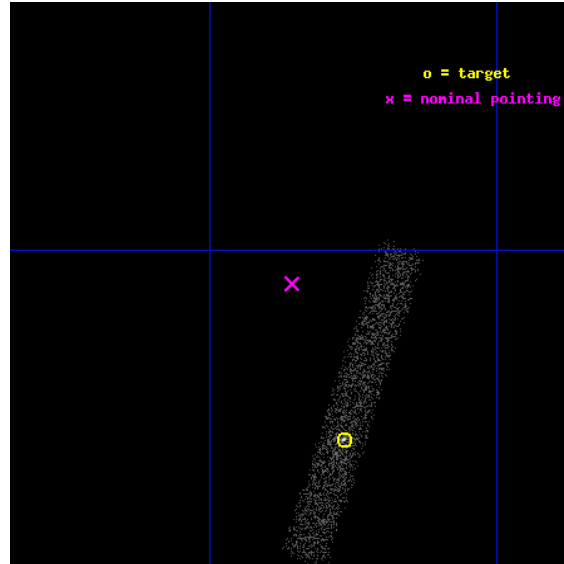
L2 Processing Date : Oct 7 2012

## Contents

<b>1</b>	<b>Front</b>	<b>2</b>
<b>2</b>	<b>OBI</b>	<b>3</b>
2.1	OBI . . . . .	3
2.1.1	Images . . . . .	3
2.1.2	Bias . . . . .	3
2.1.3	Parameters . . . . .	4
2.1.4	Events . . . . .	4
2.2	Compared Parameters . . . . .	5
2.3	Aspect . . . . .	6
2.4	Star Slots . . . . .	9
2.4.1	Slot 3 . . . . .	9
2.4.2	Slot 4 . . . . .	10
2.4.3	Slot 5 . . . . .	11
2.4.4	Slot 6 . . . . .	12
2.4.5	Slot 7 . . . . .	13
2.5	FID Slots . . . . .	14
2.5.1	Slot 0 . . . . .	14
2.5.2	Slot 1 . . . . .	15
2.5.3	Slot 2 . . . . .	16
<b>A</b>	<b>Summary</b>	<b>17</b>
A.1	Status . . . . .	17
A.2	Comments . . . . .	17

# 1 Front

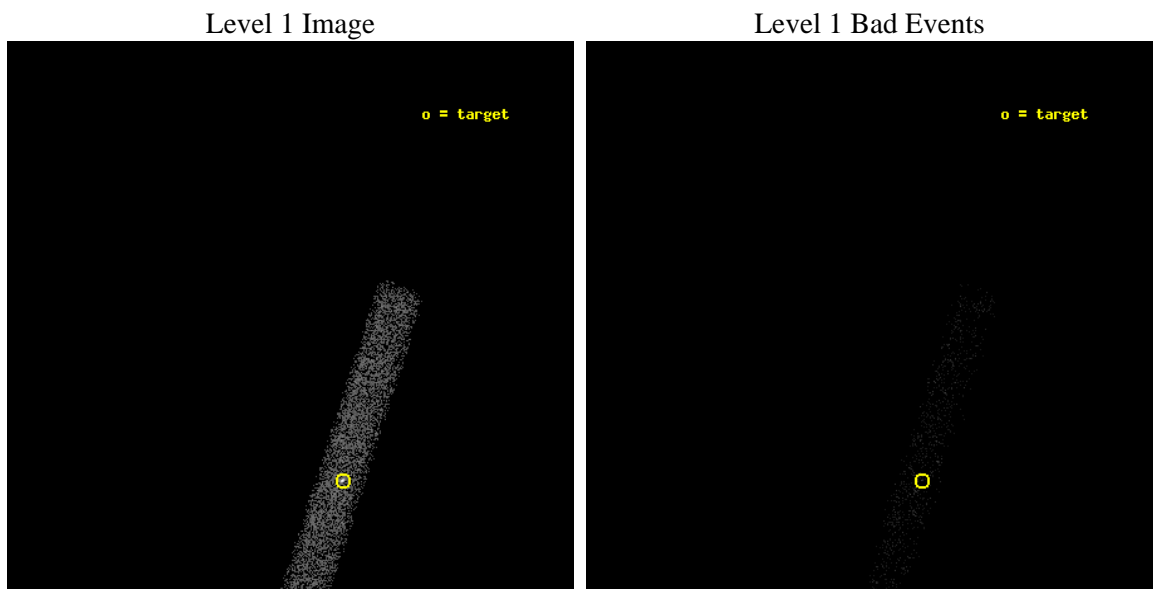
seq_num	400250	Sequence number
obs_id	3484	Observation id
title	VARIABLE THERMAL EMISSION AND FEATURE FROM AQL X-1 IN QUIESCENCE	P
observer	Prof. Robert Rutledge	Principal investigator
object	AQL X-1	Source name
dtcycle	0	&#160
cycle	P	events from which exps? Prim/Second/Both
ra_targ	287.816667	Observer's specified target RA [deg]
dec_targ	0.585	Observer's specified target Dec [deg]
ra_nom	287.83950094082	Nominal RA [deg]
dec_nom	0.65201069923564	Nominal Dec [deg]
roll_nom	107.91151041442	Nominal Roll [deg]
revision	3	Processing version of data
ontime	7160.8001066744	Sum of GTIs [s]
livetime	6494.4677187325	Livetime [s]
ontime7	7160.8001066744	Sum of GTIs [s]
l2events	4616	Number of level 2 events



## 2 OBI

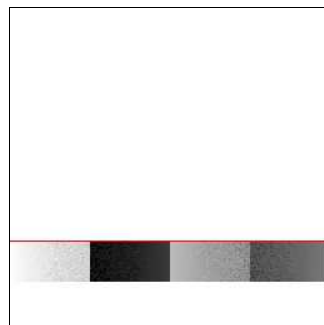
### 2.1 OBI

#### 2.1.1 Images



#### 2.1.2 Bias

Chip 7



### 2.1.3 Parameters

obi_num	0	Obi number	sched_exp_time	7000.000000	[s] Scheduled observation exposure time
ascdsver	8.4.5	Processing system revision	ontime	7160.8001066744	Sum of GTIs [s]
caldsver	4.5.2	&#160	ontime7	7160.8001066744	Sum of GTIs [s]
date	2012-10-07T08:33:09	Date and time of file creation	l1events	10621	Number of level 1 events
revision	3	Processing version of data			

### 2.1.4 Events

	<b>ccd 7</b>
level 1 events	10621
rejected events	5888
rejected %	55%

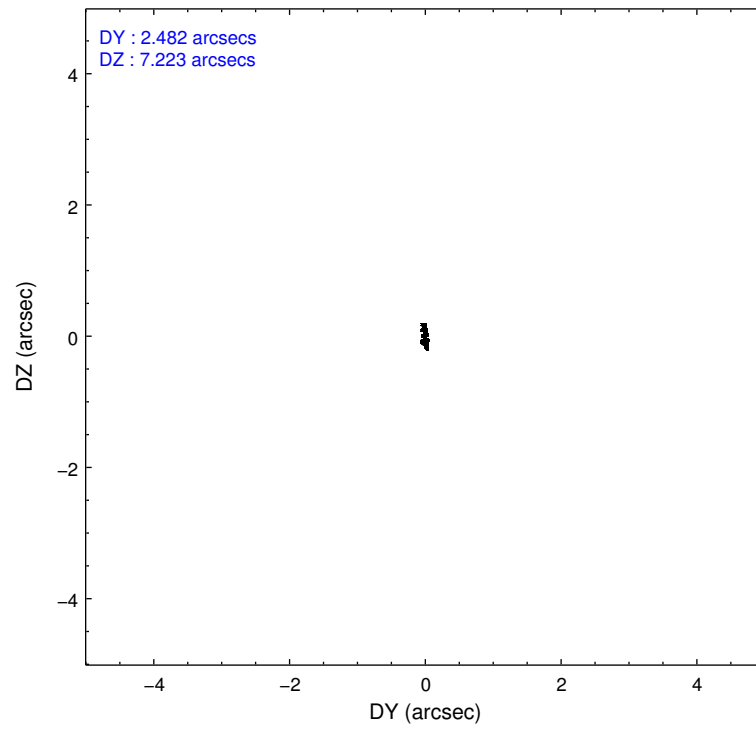
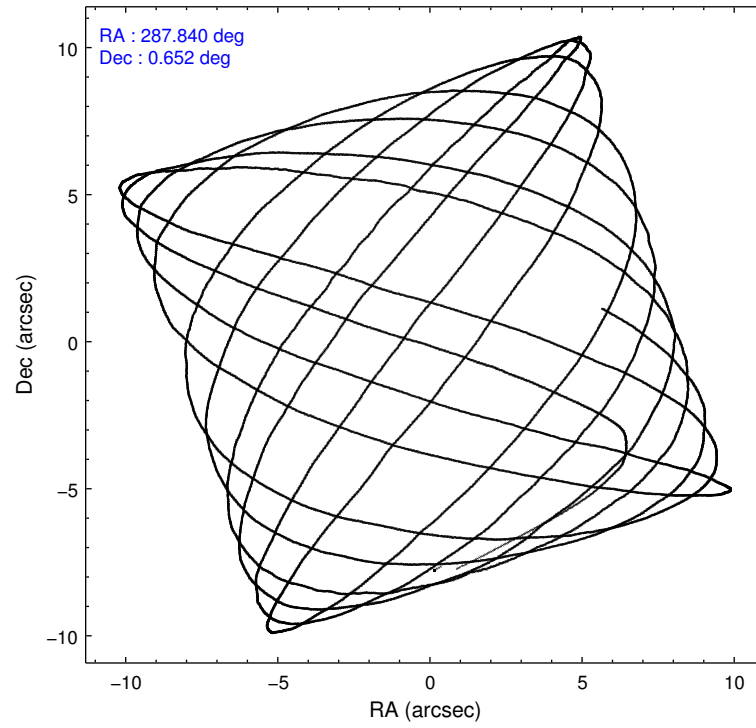
	<b>ccd 7</b>
grade 0 events	741
	6%
grade 1 events	10
	0%
grade 2 events	1075
	10%
grade 3 events	729
	6%
grade 4 events	666
	6%
grade 5 events	910
	8%
grade 6 events	2130
	20%
grade 7 events	4360
	41%

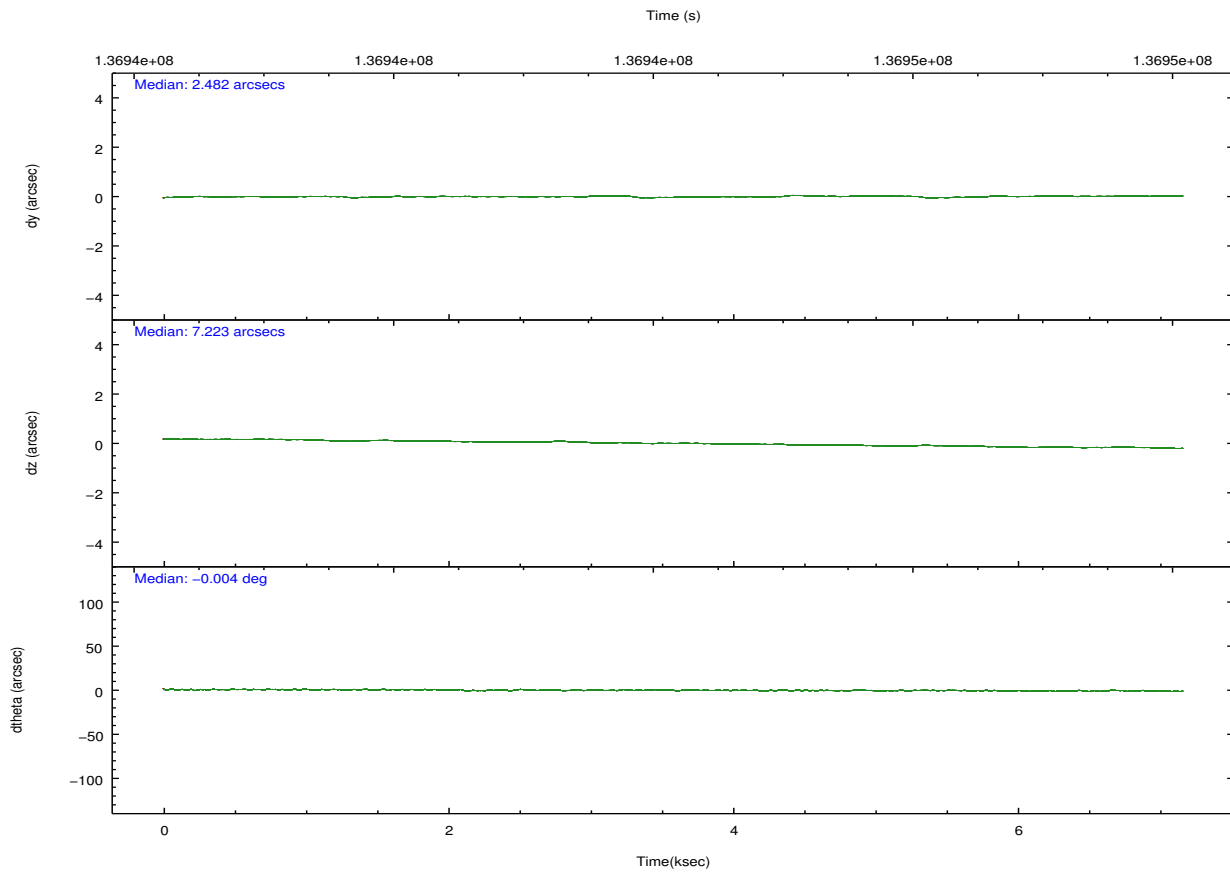
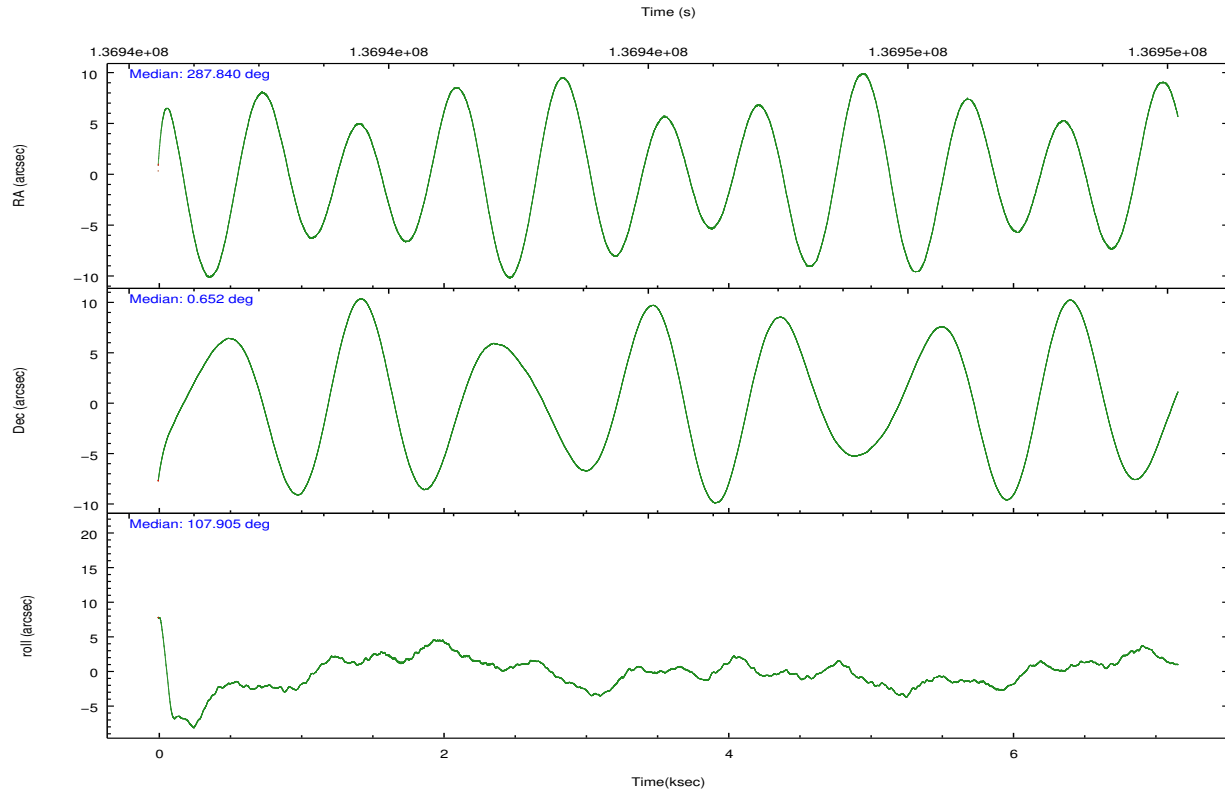


## 2.2 Compared Parameters

Parameter	Planned	Actual	Parameter	Planned	Actual
Instrument	ACIS	ACIS	Obspar format version number	7	7
Detector	ACIS-7	ACIS-7	Obspar file type	PREDICTED	ACTUAL
Grating	NONE	NONE	Obspar update status	NONE	UPDATED
Data mode	FAINT	FAINT	Number of optional ACIS chips dropped	0	0
Observation mode	POINTING	POINTING	On-chip summing requested	N	N
[deg] Pointing RA	287.859943	287.8395009408235	Subarray requested	CUSTOM	1/8
[deg] Pointing Dec	0.634032	0.6520106992356429	Subarray start row	150	150
[deg] Pointing Roll	107.754622	107.9115104144183	Subarray row count	128	128
[mm] SIM focus pos	-0.684267	-0.6828225247311905	Alternating exposures requested	N	N
[mm] SIM defocus	0	0.001444936568705701	[s] Primary exposure time	0.000000	0.4
[mm] SIM translation stage pos	-190.132523	-190.1425803651734			
[mm] SIM translation stage offset	0	0.01005778216563158			
[s] Observation start time (MET)	136940730.184000	136939396.60755			
Observation start date	2002-05-04T23:04:26	2002-05-04T22:43:16			
[s] Observation end time (MET)	136947730.184000	136948498.60792			
Observation end date	2002-05-05T01:01:06	2002-05-05T01:14:58			
Read mode	TIMED	TIMED			

## 2.3 Aspect



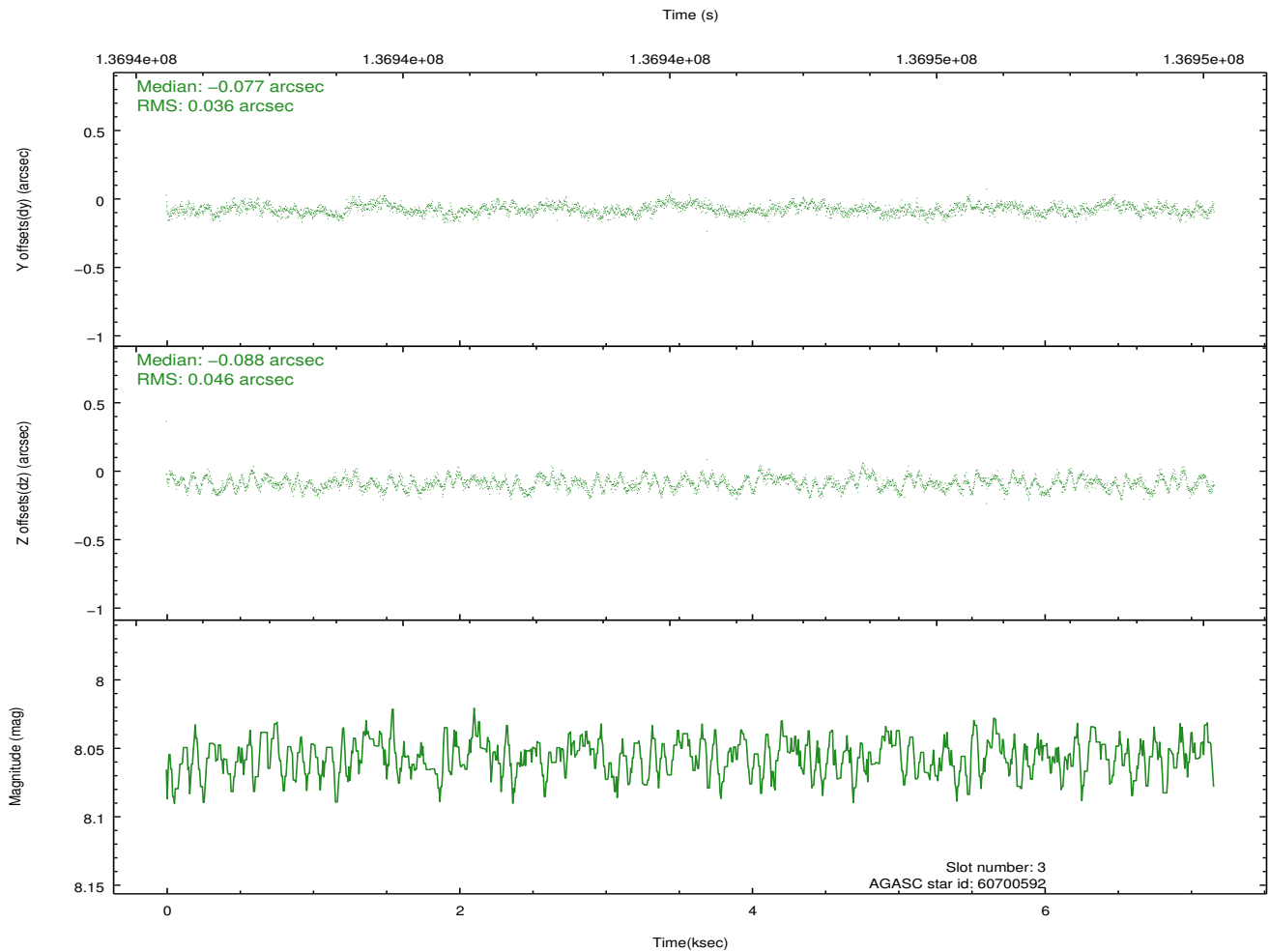
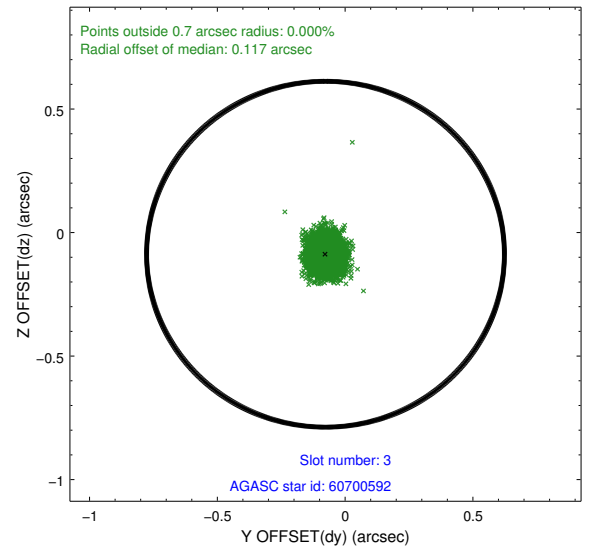
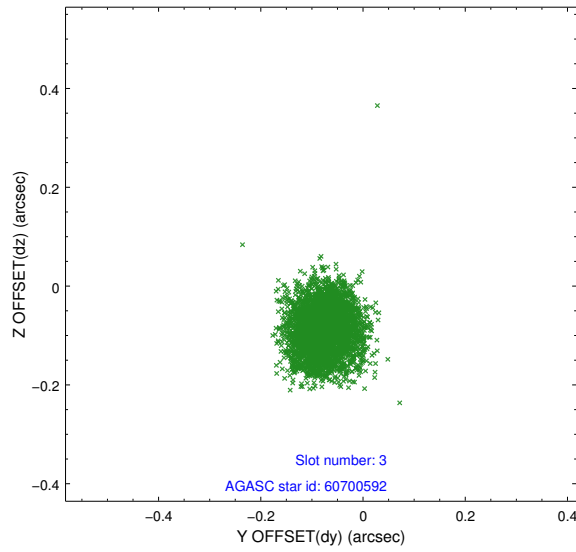


### Slot Statistics

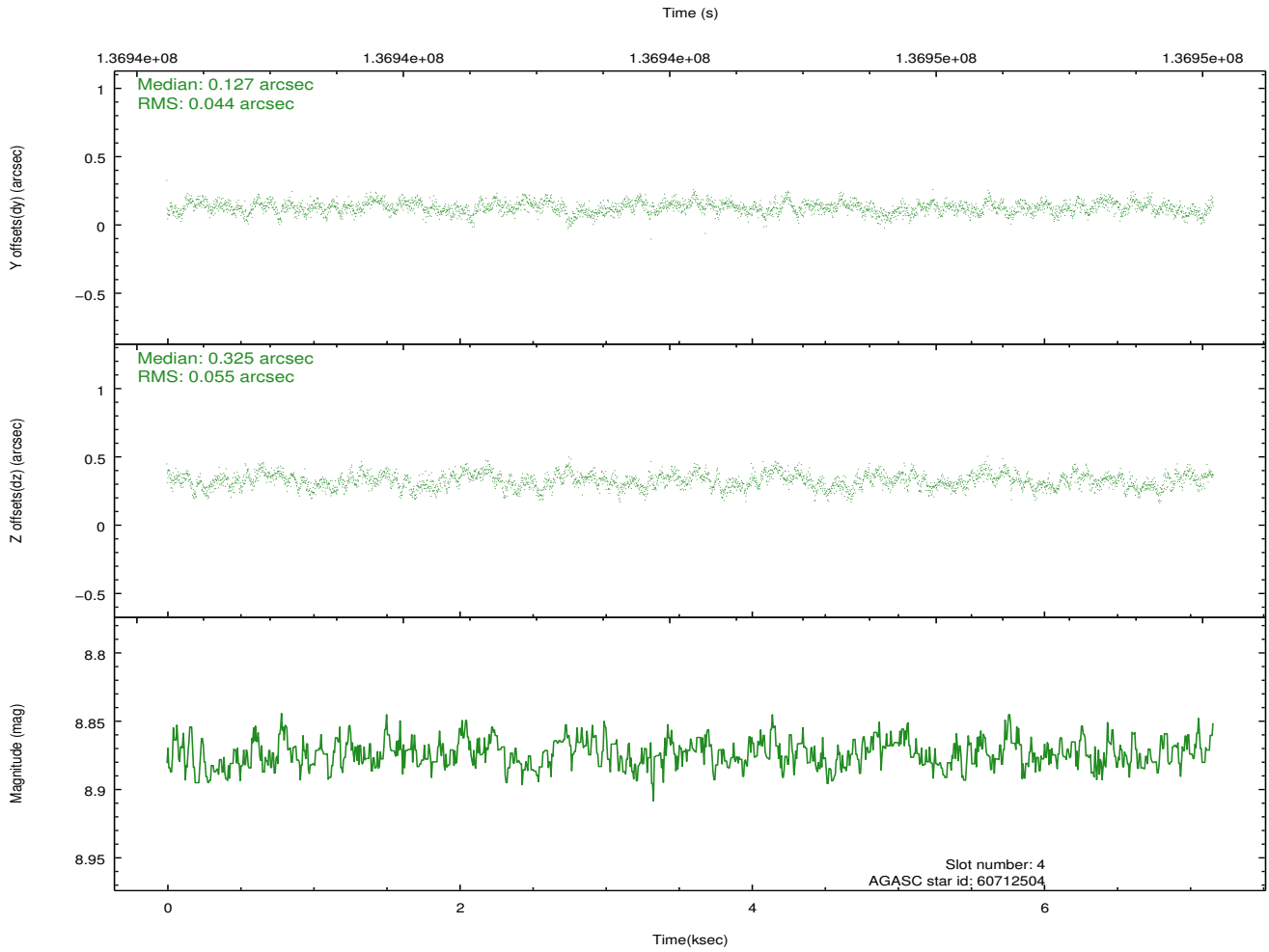
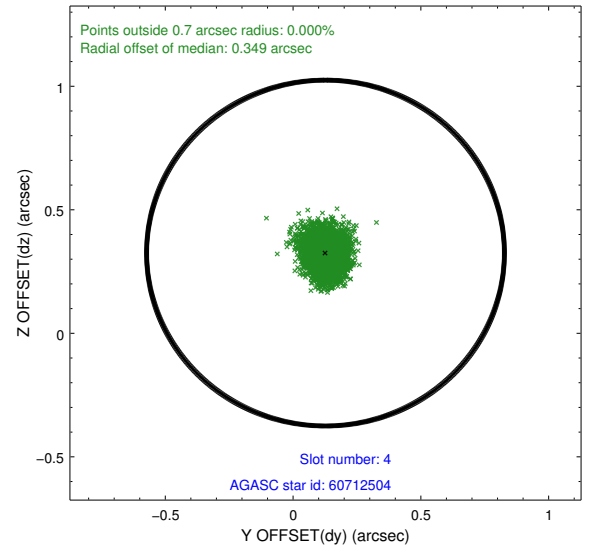
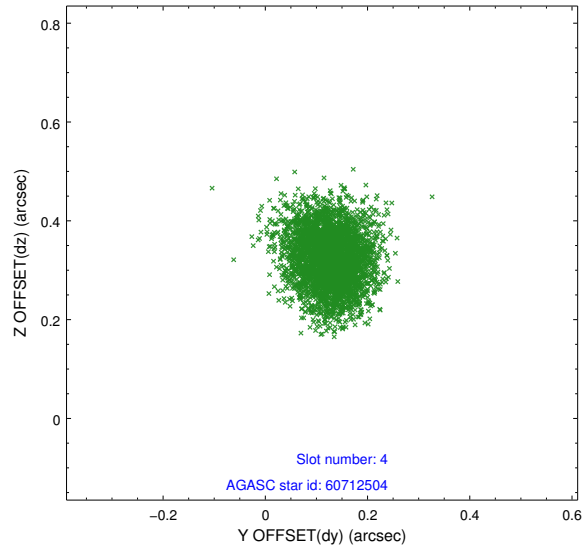
slot	status	id	mag	n_pts	med_dy	med_dz	dr1	dr2	ra	dec	mean_y	mean_z
0	FID	ACIS-S-2	7.11	1748	-0.012	0.010	0.008	0.013	0.000000	0.000000	-755.12	-1728.33
1	FID	ACIS-S-4	7.20	1748	-0.049	0.003	0.006	0.010	0.000000	0.000000	2157.76	179.32
2	FID	ACIS-S-5	7.24	1747	0.030	-0.005	0.007	0.012	0.000000	0.000000	-1806.89	173.89
3	GUIDE	60700592	8.06	3493	-0.077	-0.088	0.063	0.096	287.530354	0.932002	1383.53	802.71
4	GUIDE	60712504	8.87	3492	0.127	0.325	0.074	0.121	288.588609	0.262689	-2071.99	-2090.52
5	GUIDE	60714072	8.95	3492	-0.106	0.176	0.099	0.154	288.094723	1.368496	2260.28	-1611.42
6	GUIDE	60708936	9.14	3493	-0.113	-0.091	0.088	0.140	287.407925	0.924863	1494.06	1229.75
7	GUIDE	672281216	9.31	3493	0.173	-0.321	0.102	0.163	287.454836	-0.067927	-1961.35	2159.30

## 2.4 Star Slots

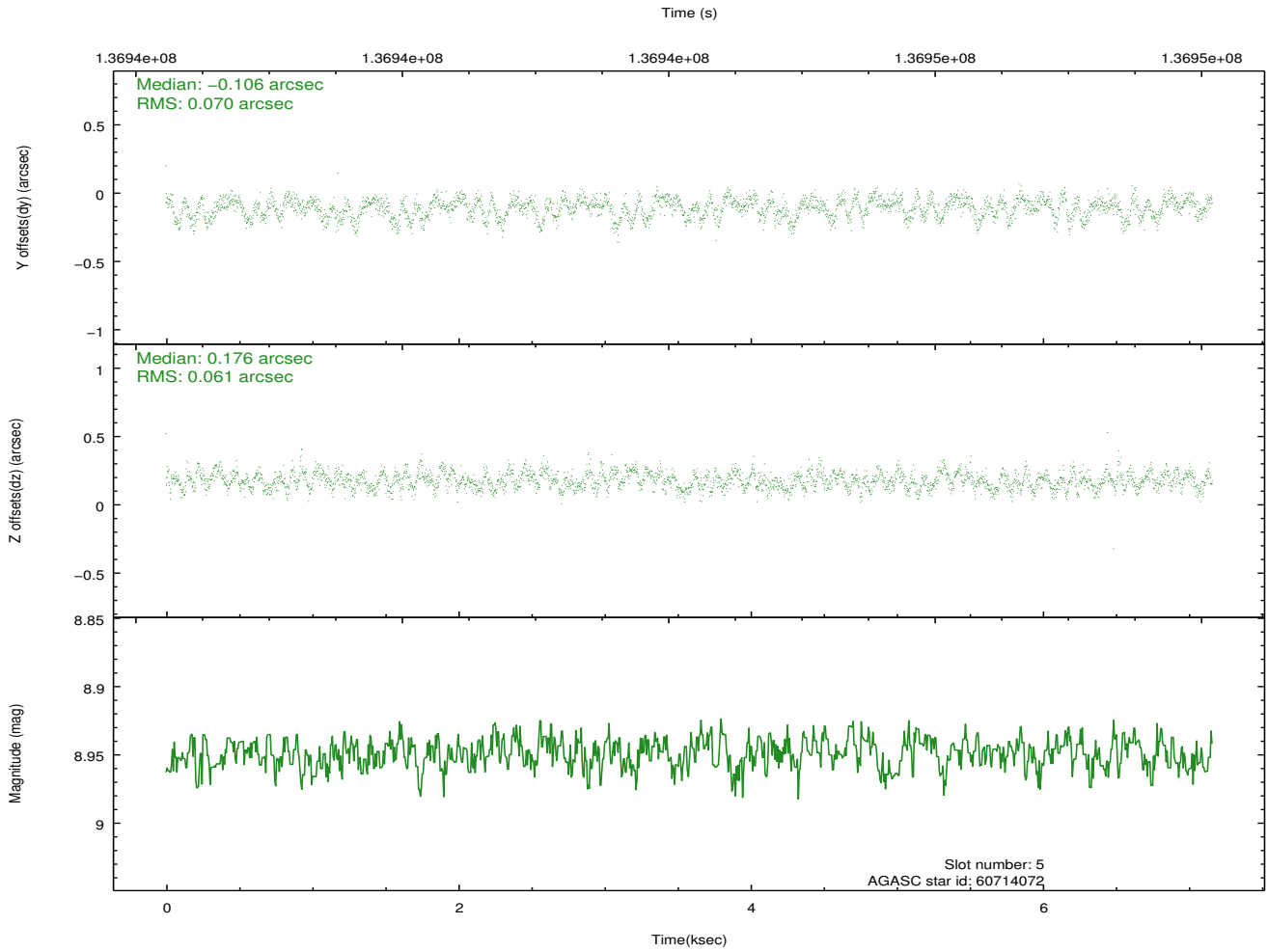
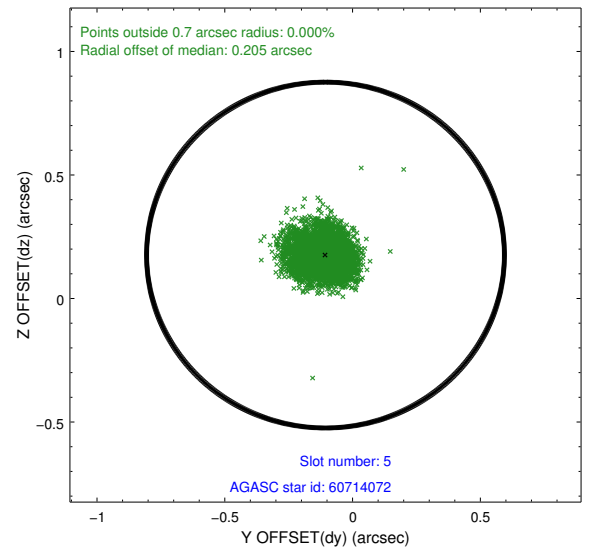
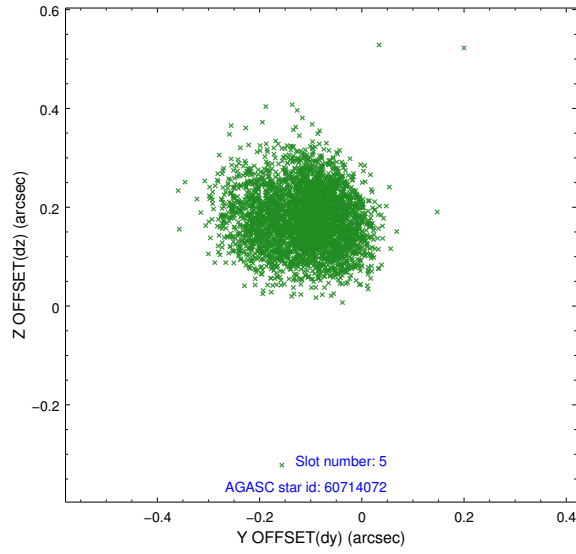
### 2.4.1 Slot 3



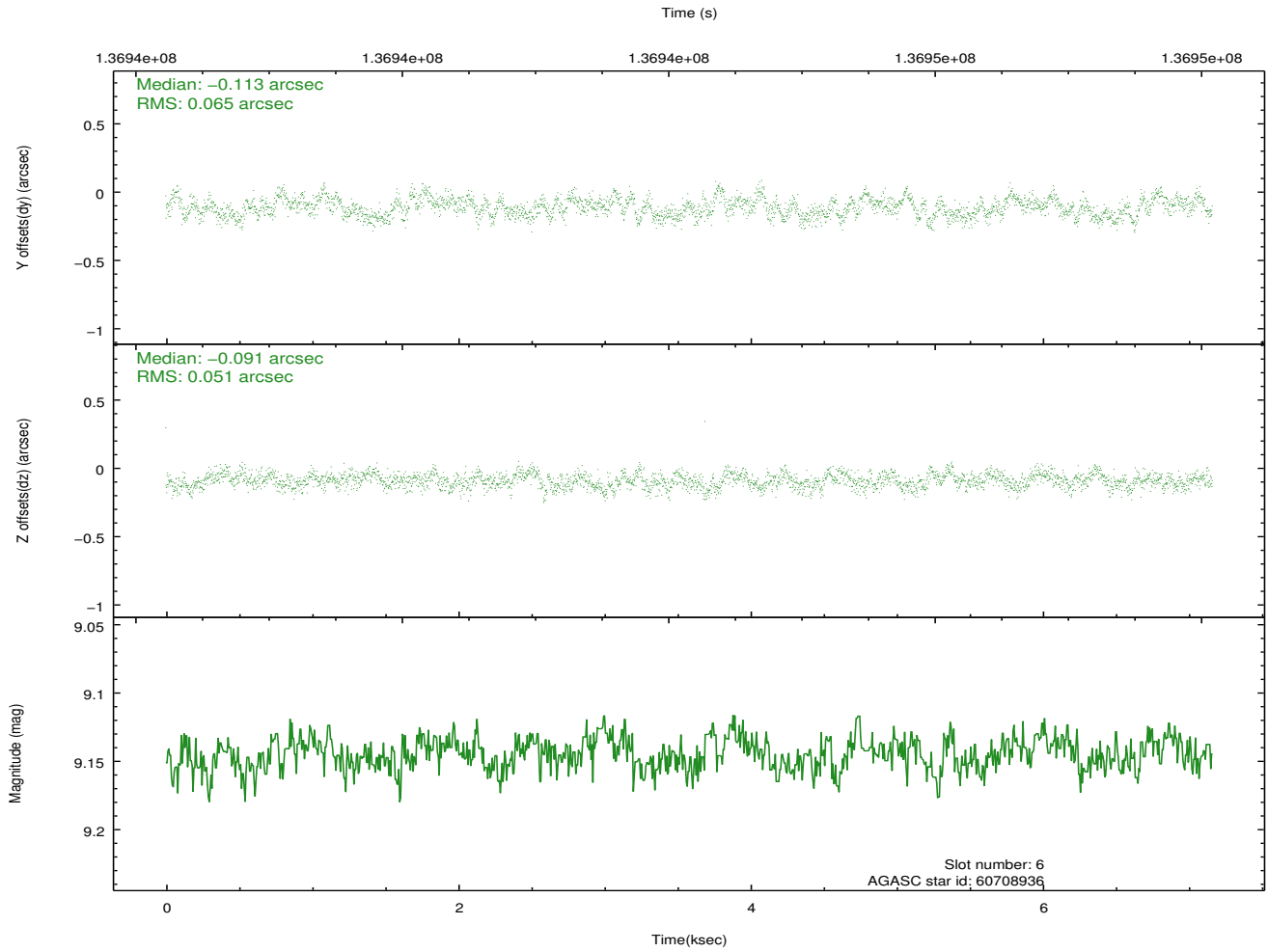
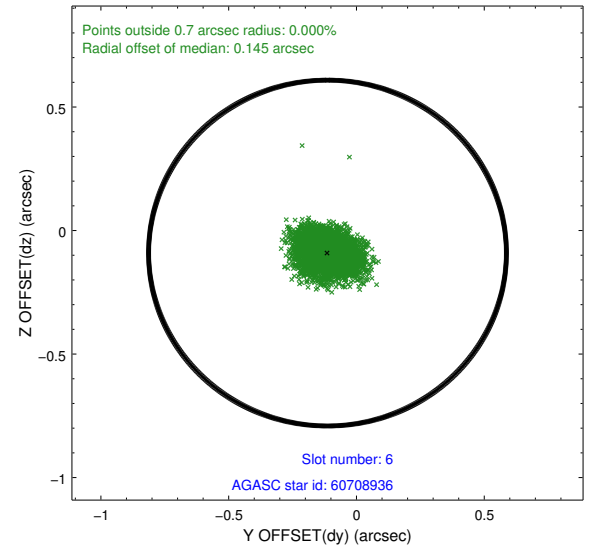
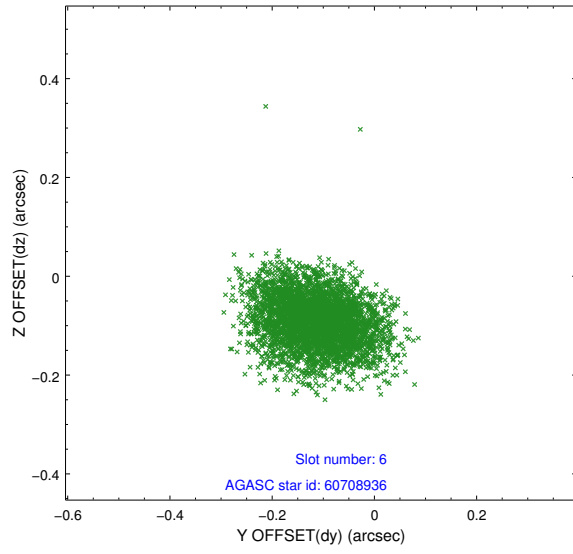
## 2.4.2 Slot 4



### 2.4.3 Slot 5

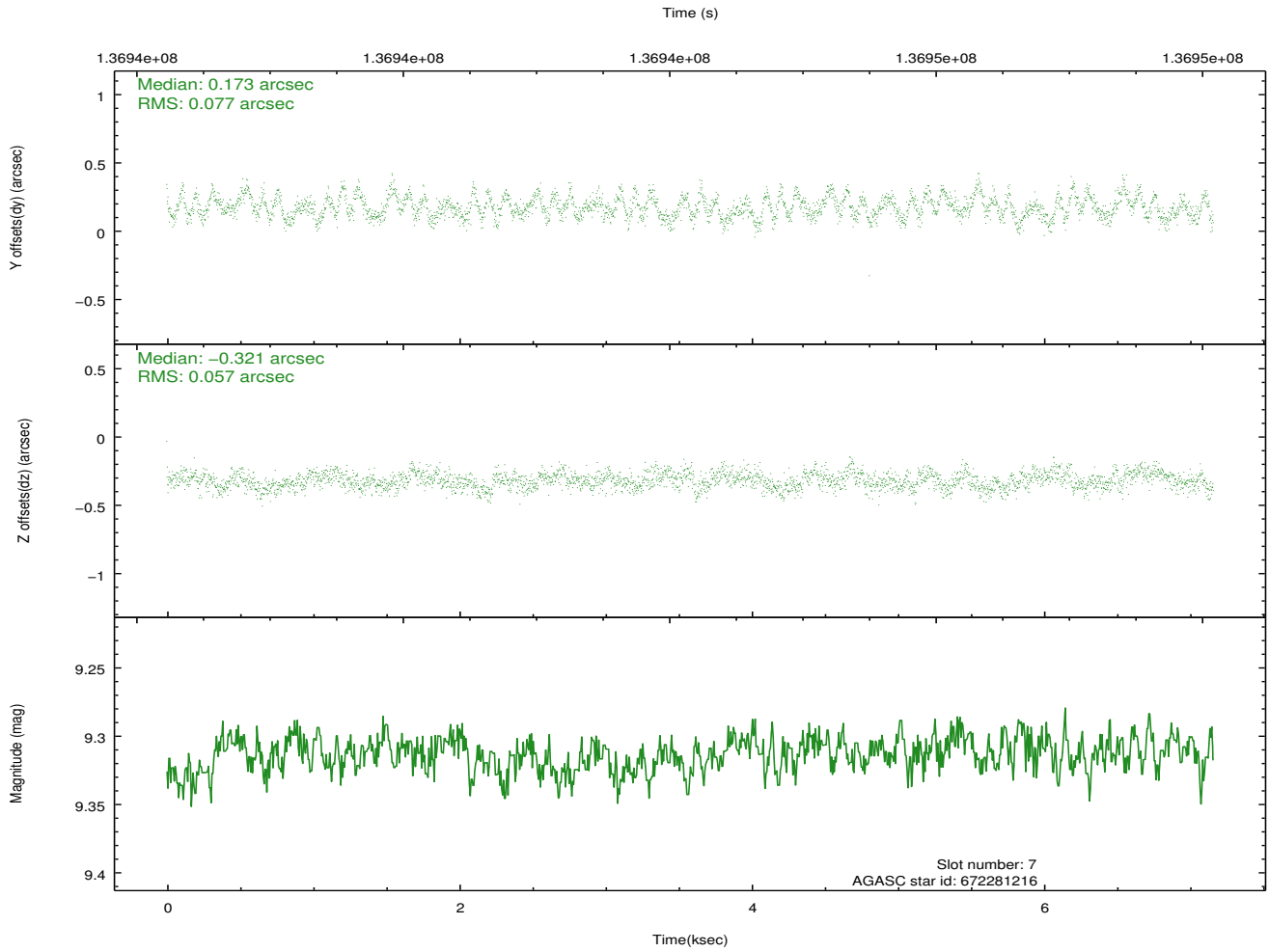
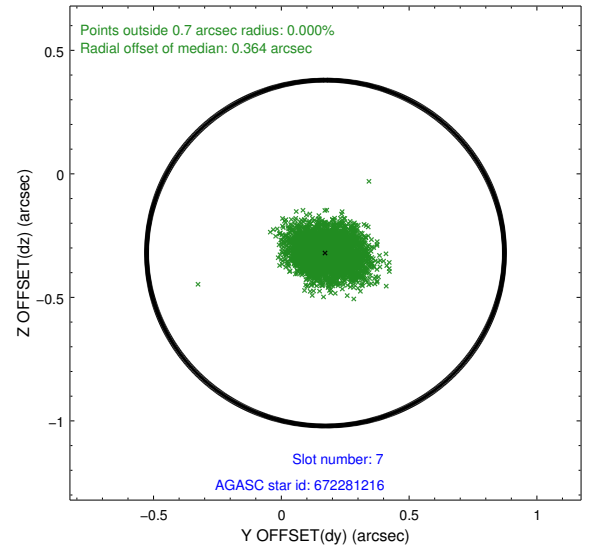
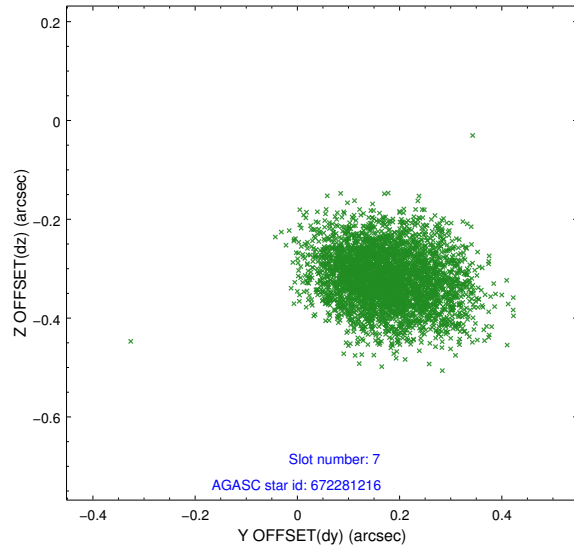


## 2.4.4 Slot 6



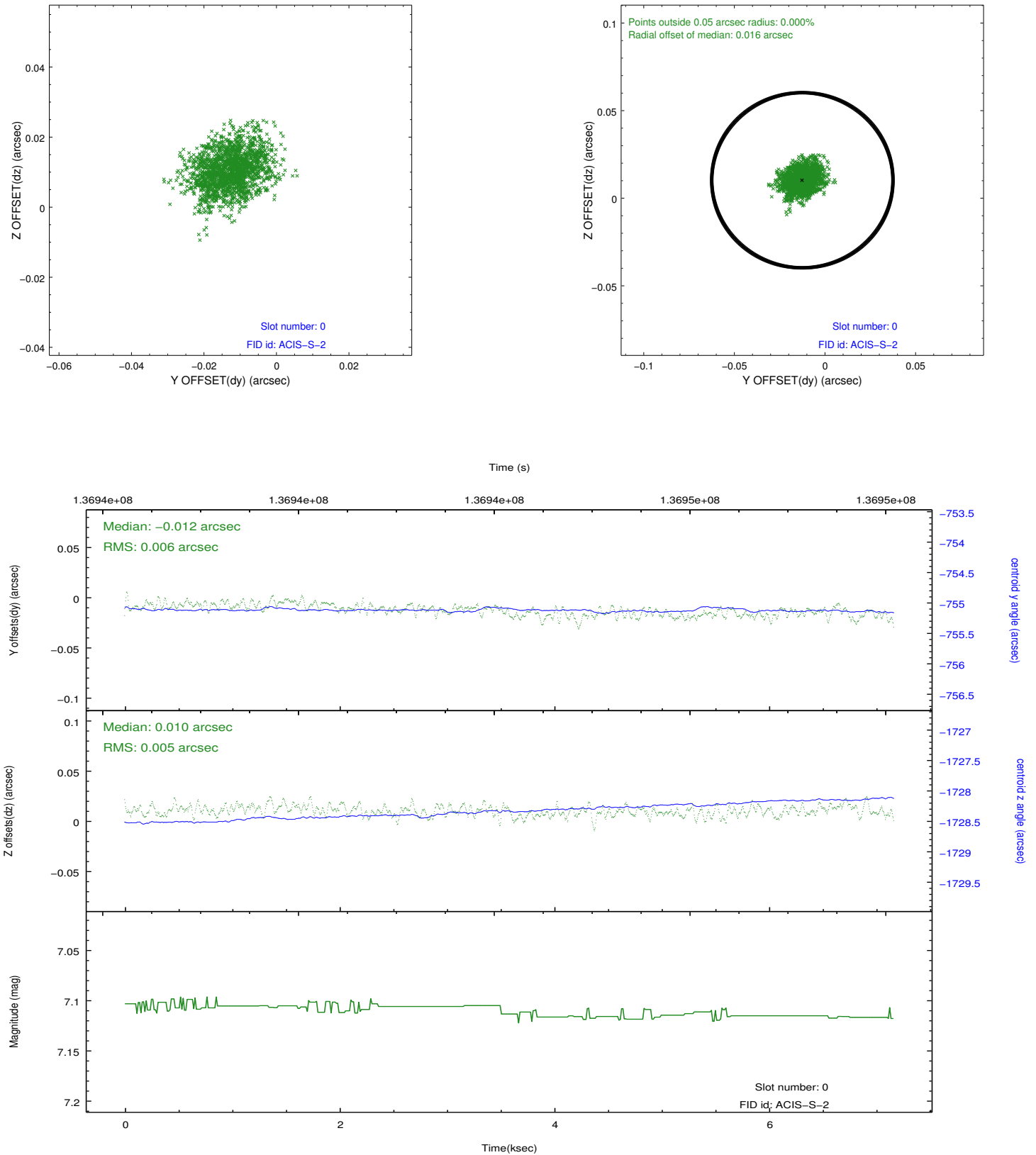


## 2.4.5 Slot 7

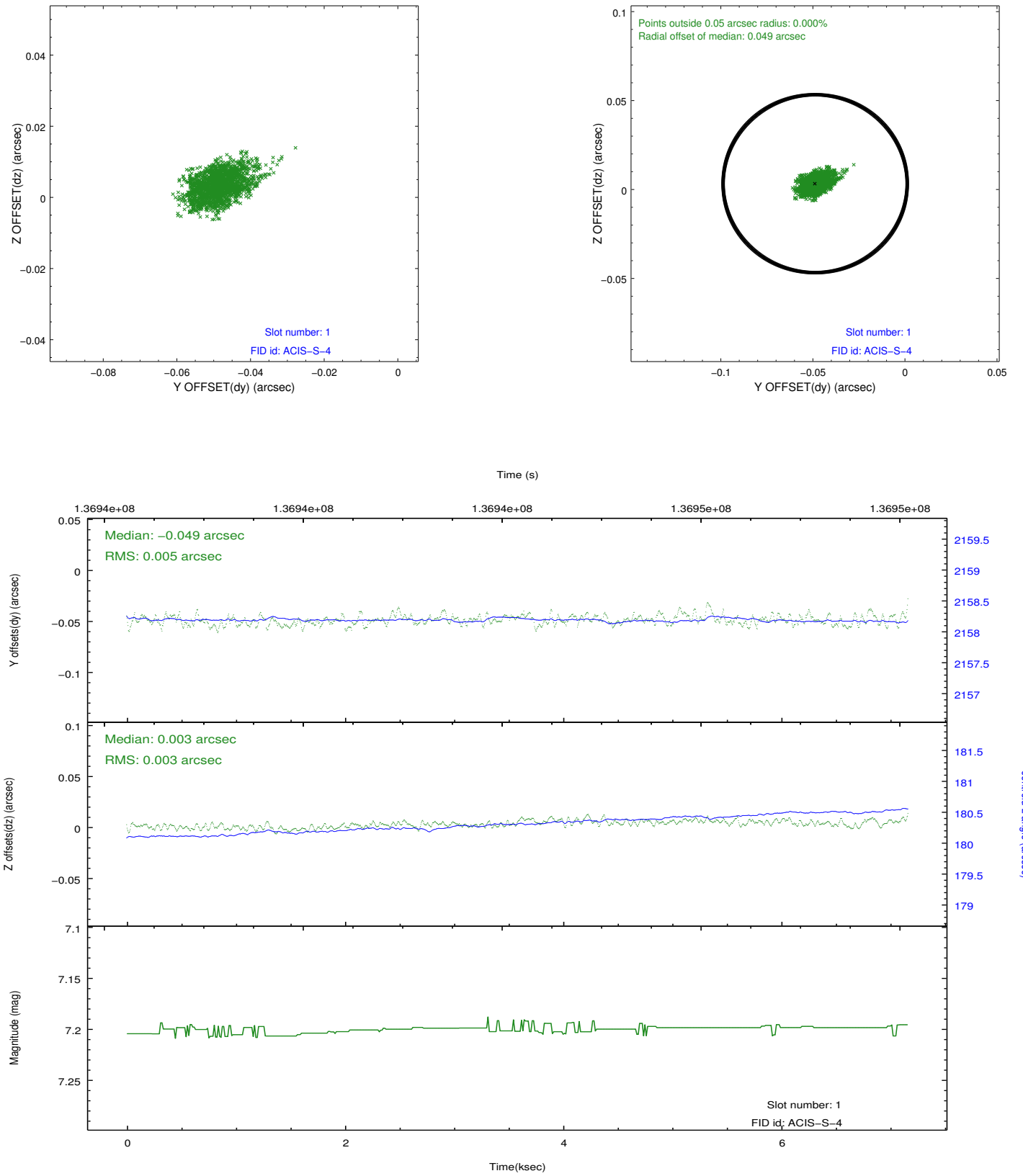


## 2.5 FID Slots

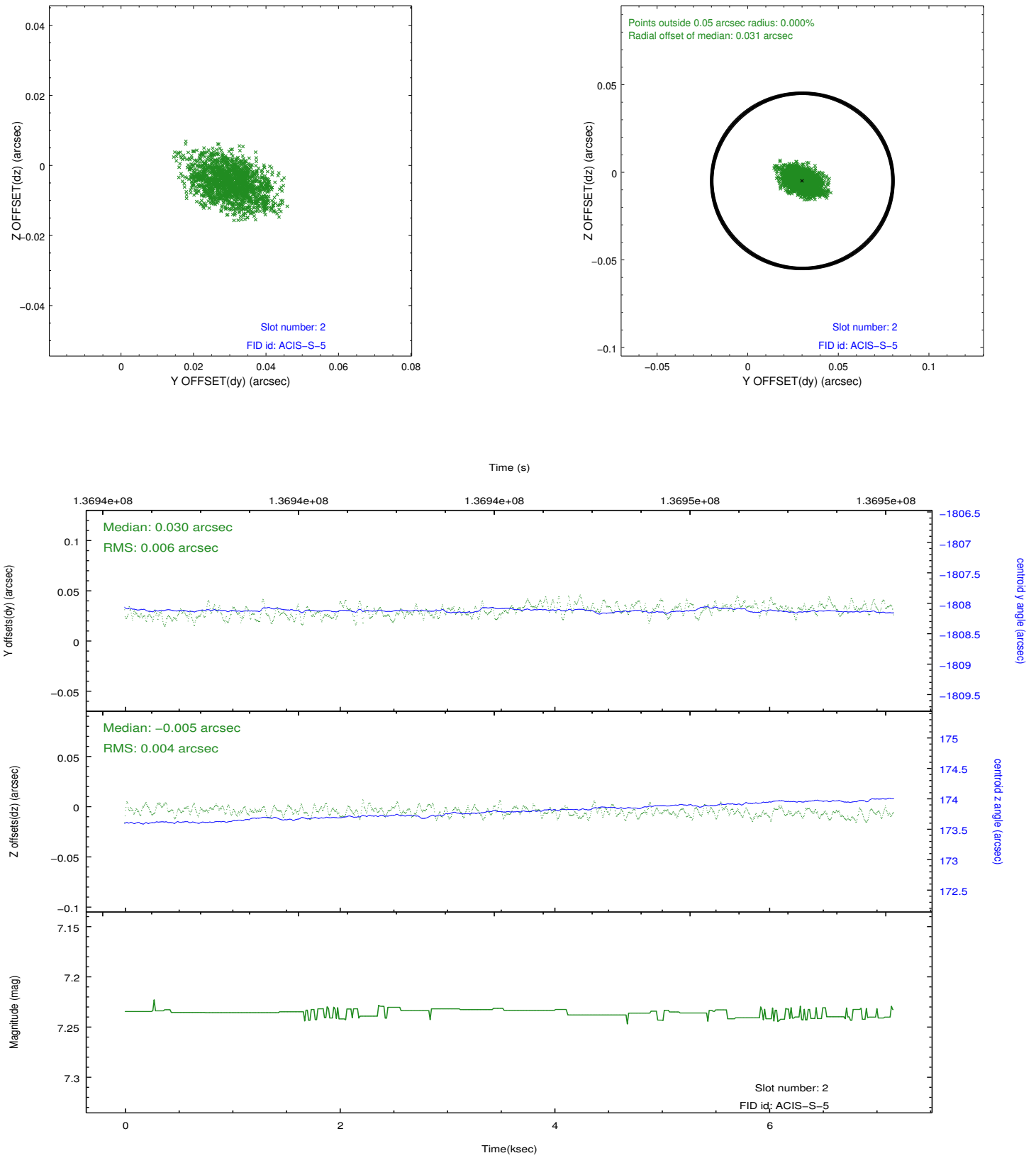
### 2.5.1 Slot 0



## 2.5.2 Slot 1



### 2.5.3 Slot 2



## A Summary

### A.1 Status

V&V Scientist	Beth Sundheim
V&V Date (YYYY-MM-DD)	2012.10.15
V&V Edition	1
V&V Disposition and Status	OK
V&V Charge Time	7.16

### A.2 Comments