

# V&V Reference Report

## L2 ASCDS Version : 7.6.9

Observation 3385 - L2 Version 001  
Chandra X-Ray Center

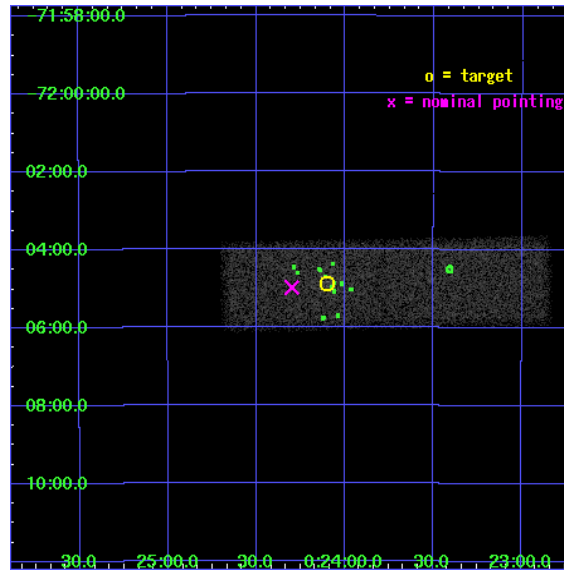
L2 Processing Date : Oct 5 2006

## Contents

<b>1</b>	<b>Front</b>	<b>2</b>
<b>2</b>	<b>OBI</b>	<b>3</b>
2.1	OBI . . . . .	3
2.1.1	Images . . . . .	3
2.1.2	Bias . . . . .	3
2.1.3	Parameters . . . . .	4
2.1.4	Events . . . . .	4
2.2	Compared Parameters . . . . .	5
2.3	Aspect . . . . .	6
2.4	Star Slots . . . . .	9
2.4.1	Slot 3 . . . . .	9
2.4.2	Slot 4 . . . . .	10
2.4.3	Slot 5 . . . . .	11
2.4.4	Slot 6 . . . . .	12
2.4.5	Slot 7 . . . . .	13
2.5	FID Slots . . . . .	14
2.5.1	Slot 0 . . . . .	14
2.5.2	Slot 1 . . . . .	15
2.5.3	Slot 2 . . . . .	16
<b>3</b>	<b>Point Sources</b>	<b>17</b>
<b>A</b>	<b>Summary</b>	<b>18</b>
A.1	Status . . . . .	18
A.2	Comments . . . . .	18

# 1 Front

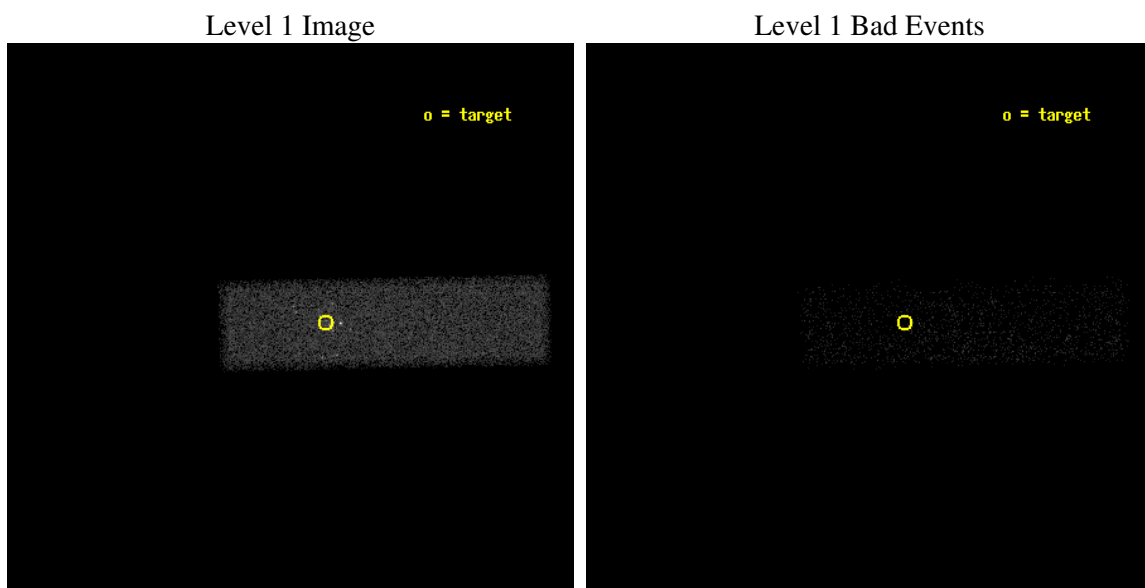
seq_num	400216
obs_id	3385
title	COMPLETE COMPACT OBJECT AND BINARY SURVEY OF 47TUC
observer	Prof. Jonathan Grindlay
object	47 TUCANAE
dtcycle	0
cycle	P
ra_targ	6.024167
dec_targ	-72.080889
ra_nom	6.0749757550599
dec_nom	-72.08296221576
roll_nom	358.81825690851
revision	2
ontime	5579.2000831366
livedtime	5306.9533749991
ontime7	5579.2000831366
l2events	31150



## 2 OBI

### 2.1 OBI

#### 2.1.1 Images



#### 2.1.2 Bias

Chip 7



### 2.1.3 Parameters

obi_num	0
ascdsver	7.6.9
caldbver	3.2.3
date	2006-10-05T15:44:51
revision	2

sched_exp_time	4750.000000
ontime	5580.2333411574
ontime7	5580.2333411574
l1events	41336

### 2.1.4 Events

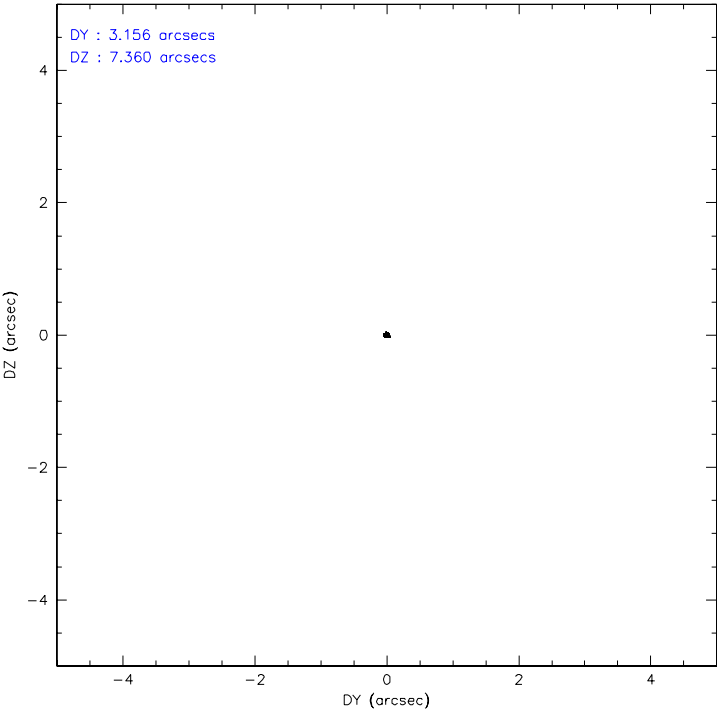
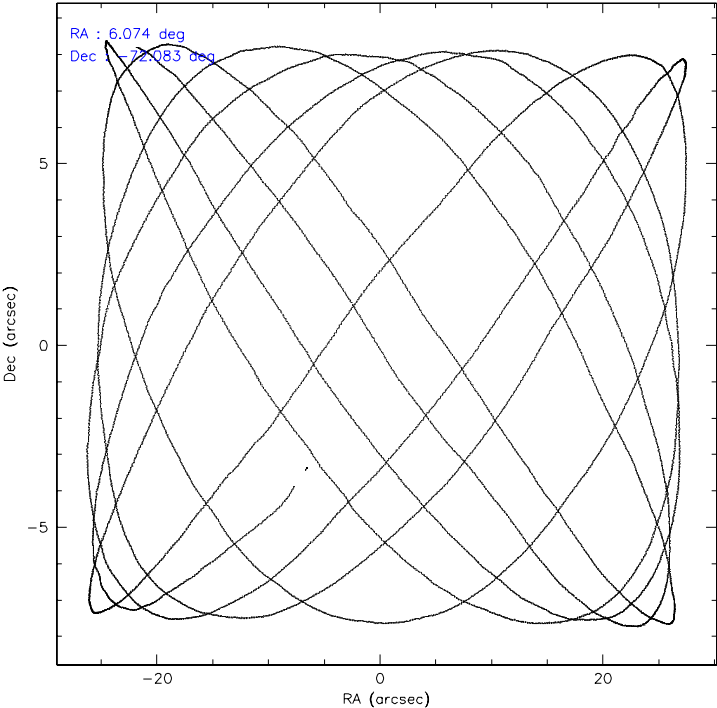
	<b>ccd 7</b>
level 1 events	41336
rejected events	9746
rejected %	23%

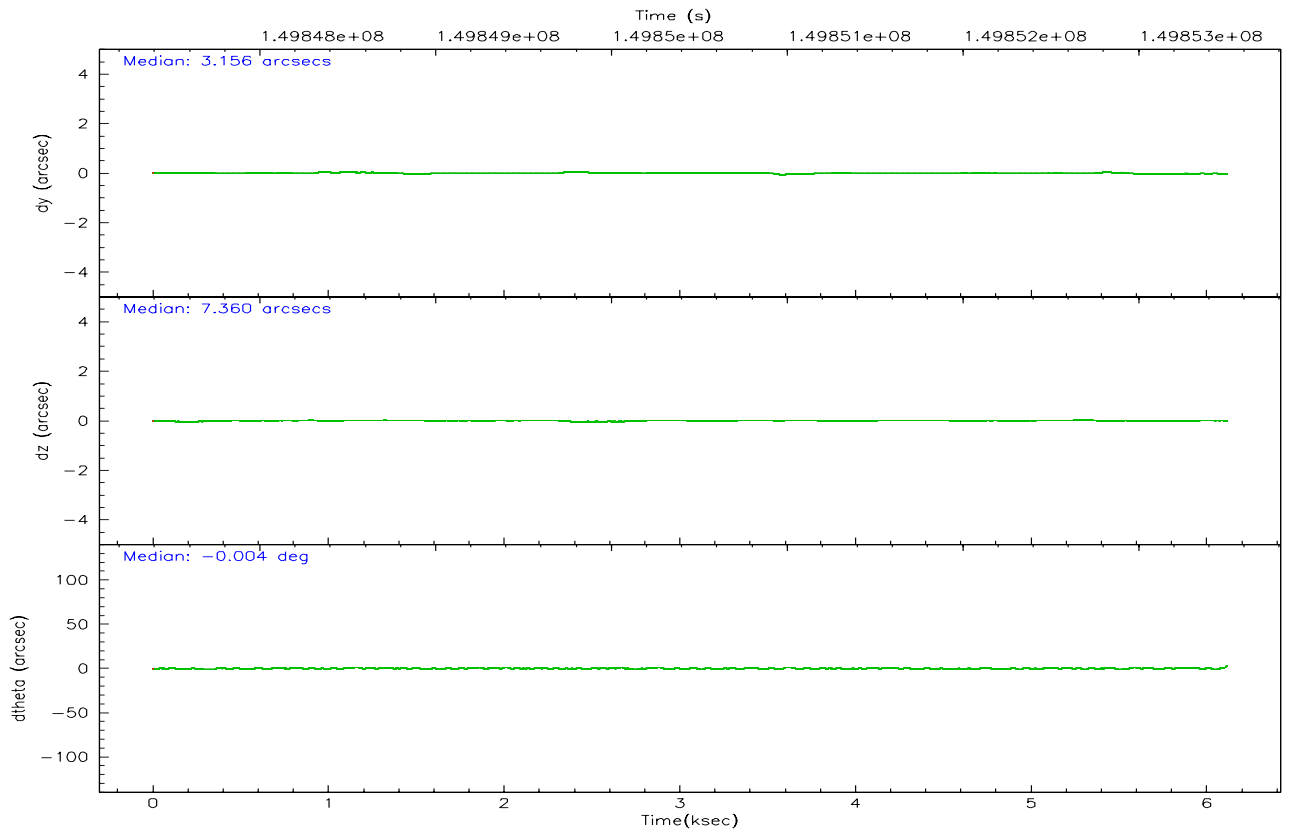
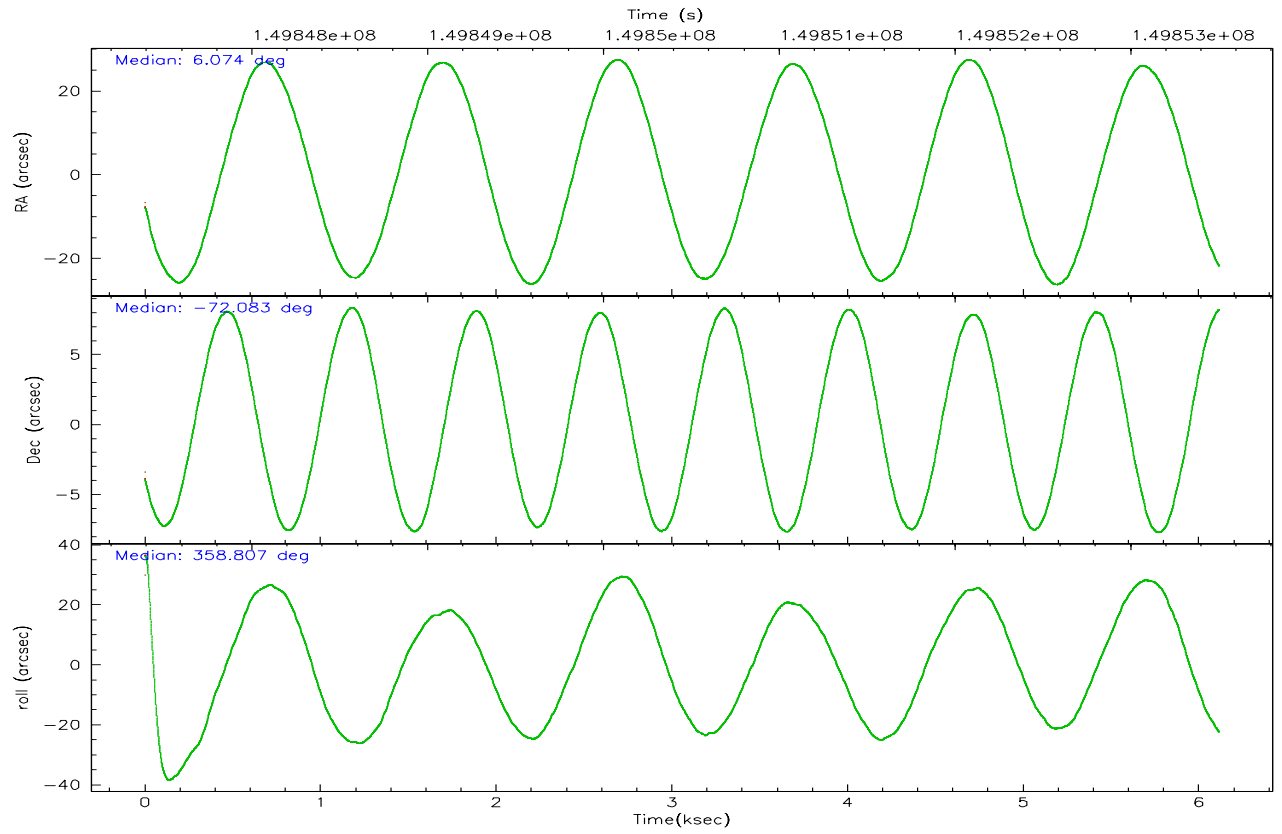
	<b>ccd 7</b>
grade 0 events	4007
	9%
grade 1 events	37
	0%
grade 2 events	6594
	15%
grade 3 events	2250
	5%
grade 4 events	2197
	5%
grade 5 events	1120
	2%
grade 6 events	16544
	40%
grade 7 events	8587
	20%

## 2.2 Compared Parameters

Parameter	Planned	Actual	Parameter	Planned	Actual
Instrument	ACIS	ACIS	Obspar format version number	6	6
Detector	ACIS-7	ACIS-7	Obspar file type	PREDICTED	ACTUAL
Grating	NONE	NONE	Obspar update status	NONE	UPDATED
Data mode	FAINT	FAINT	Number of optional ACIS chips dropped	0	0
Observation mode	POINTING	POINTING	On-chip summing requested	N	N
Pointing RA	5.998010	6.074975755059866	Subarray requested	CUSTOM	1/4
Pointing Dec	-72.096353	-72.08296221575996	Subarray start row	384	384
Pointing Roll	358.588240	358.8182569085141	Subarray row count	256	256
SIM focus pos (mm)	-0.684267	-0.6828225247311905	Alternating exposures requested	N	N
SIM defocus (mm)	0	0.001444936568705701	Primary exposure time	0.000000	0.8
SIM translation stage pos (mm)	-190.132523	-190.1400660498719			
SIM translation stage offset (mm)	0	0.00754346686406393			
Observation start time	149848758.184000	149847212.40023			
Observation start date	2002-10-01T08:38:14	2002-10-01T08:13:32			
Observation end time	149853508.184000	149854160.36302			
Observation end date	2002-10-01T09:57:24	2002-10-01T10:09:20			
Read mode	TIMED	TIMED			

### 2.3 Aspect





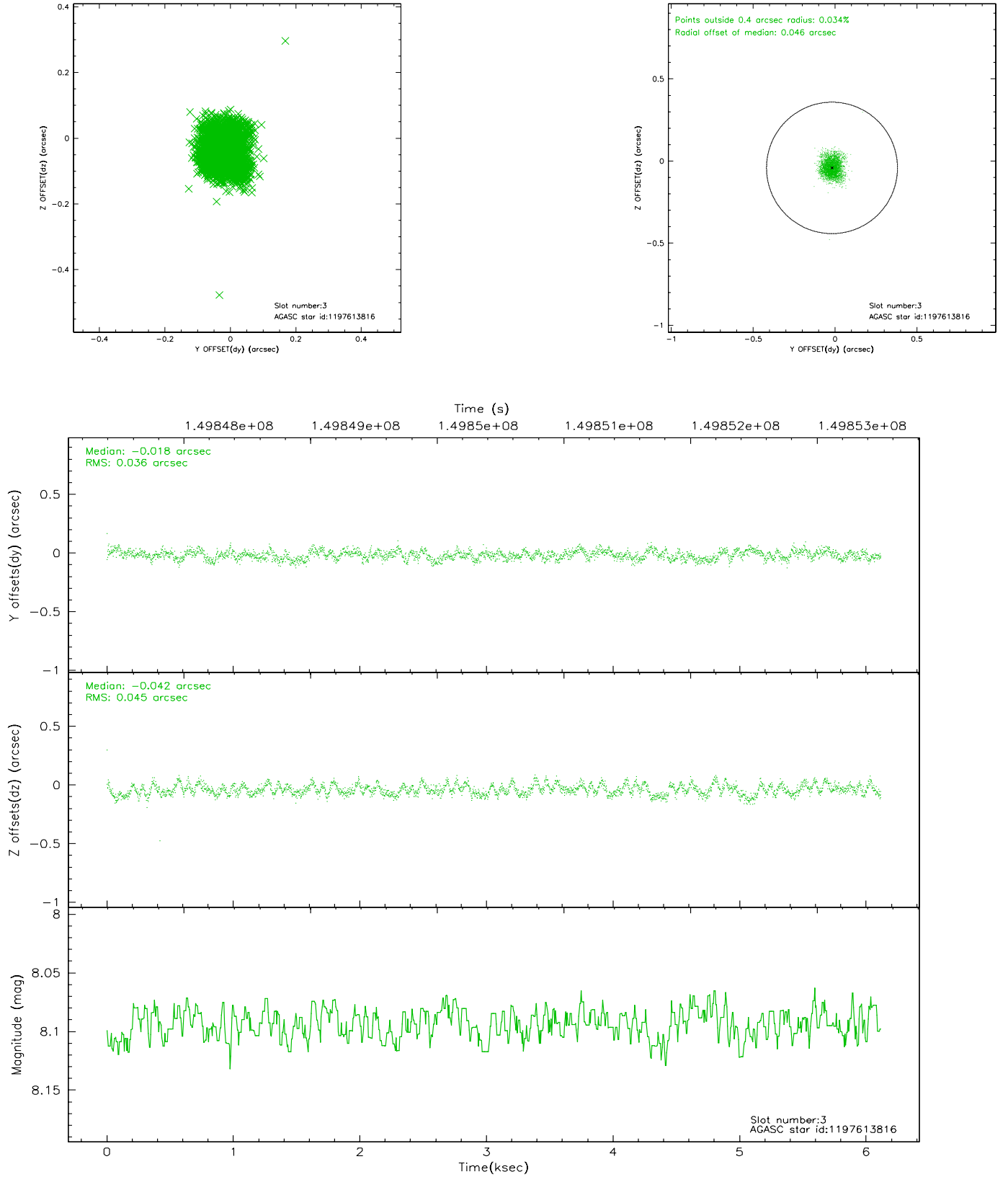
### Slot Statistics

slot	status	id	mag	n_pts	med_dy	med_dz	dr1	dr2	ra	dec	mean_y	mean_z
0	FID	ACIS-S-2	7.11	1492	-0.001	0.022	0.007	0.012	0.000000	0.000000	-755.81	-1728.51
1	FID	ACIS-S-4	7.20	1492	-0.039	-0.005	0.005	0.009	0.000000	0.000000	2157.00	178.94
2	FID	ACIS-S-5	7.24	1492	0.009	-0.008	0.007	0.011	0.000000	0.000000	-1807.39	173.72
3	GUIDE	1197613816	8.09	2984	-0.018	-0.042	0.061	0.097	5.181461	-71.977993	-918.33	397.45
4	GUIDE	1197615656	8.67	2974	0.059	-0.019	0.070	0.113	6.909375	-71.882658	1001.92	786.99
5	GUIDE	1197999176	8.85	2984	-0.100	-0.037	0.075	0.119	6.259352	-72.617840	329.03	-1870.03
6	GUIDE	1197607928	9.63	2980	0.110	0.087	0.093	0.146	7.837743	-72.165759	2035.87	-230.73
7	GUIDE	1197619752	10.02	2980	-0.054	0.008	0.109	0.178	4.510721	-71.856694	-1685.53	800.62

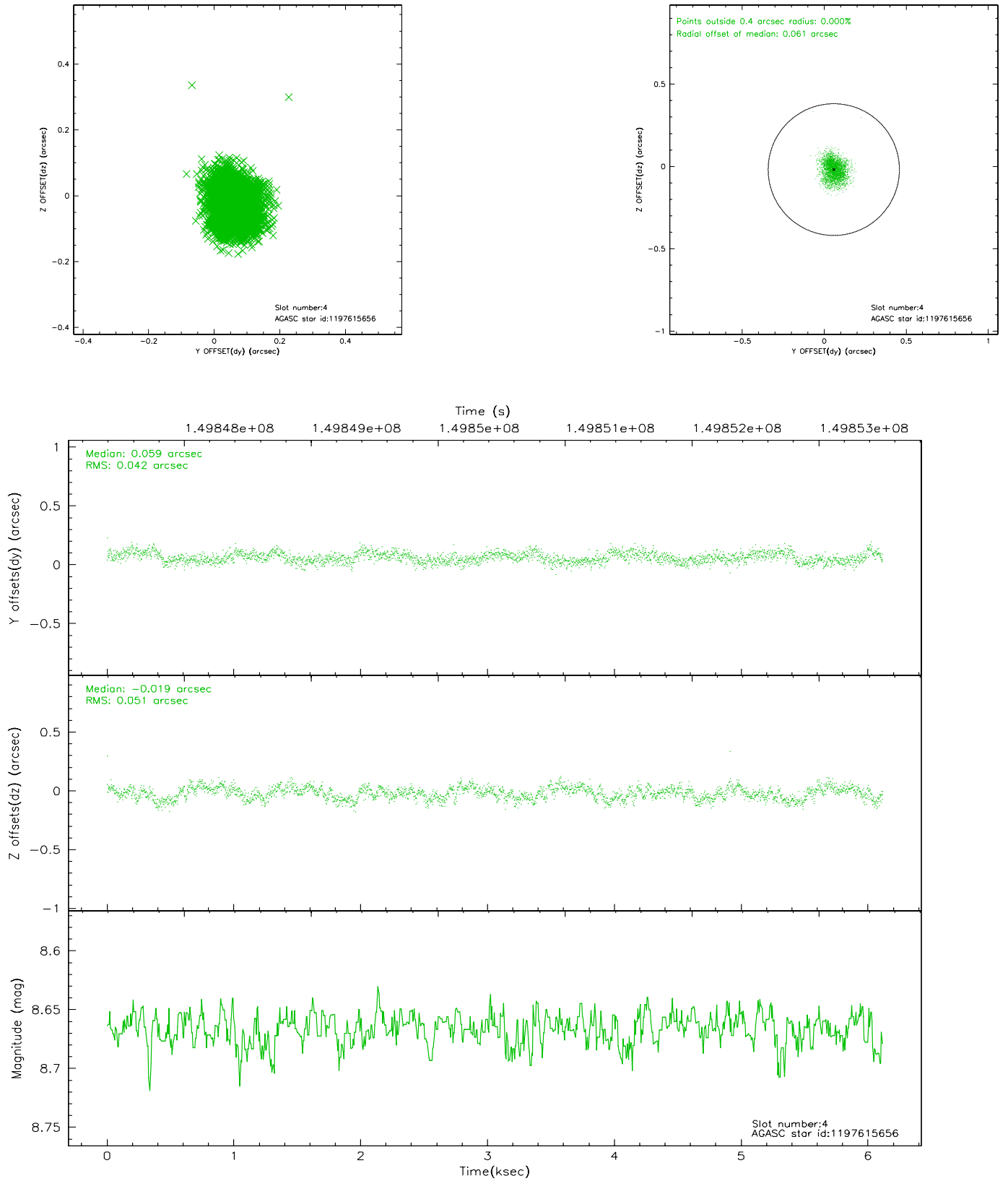


## 2.4 Star Slots

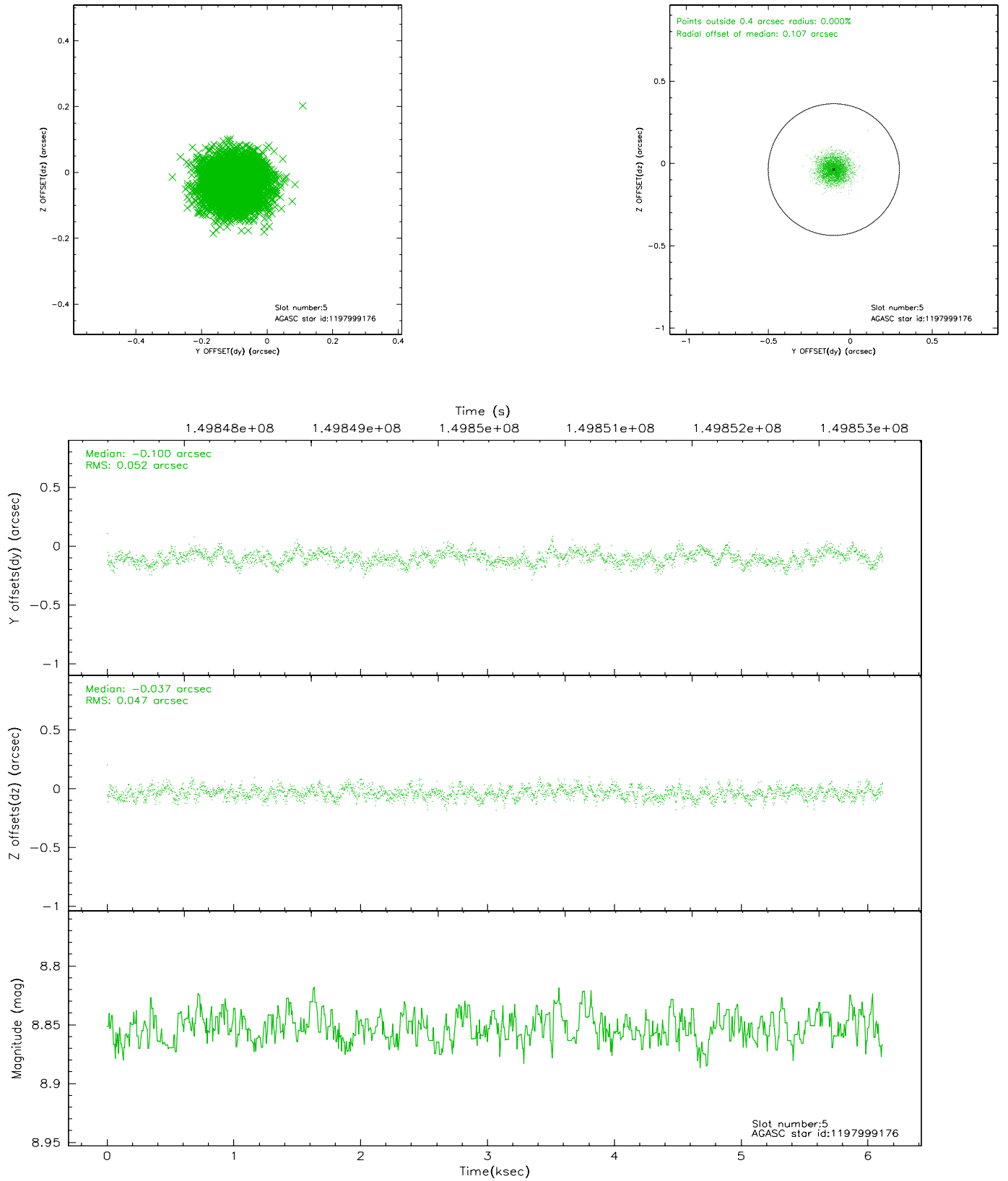
### 2.4.1 Slot 3



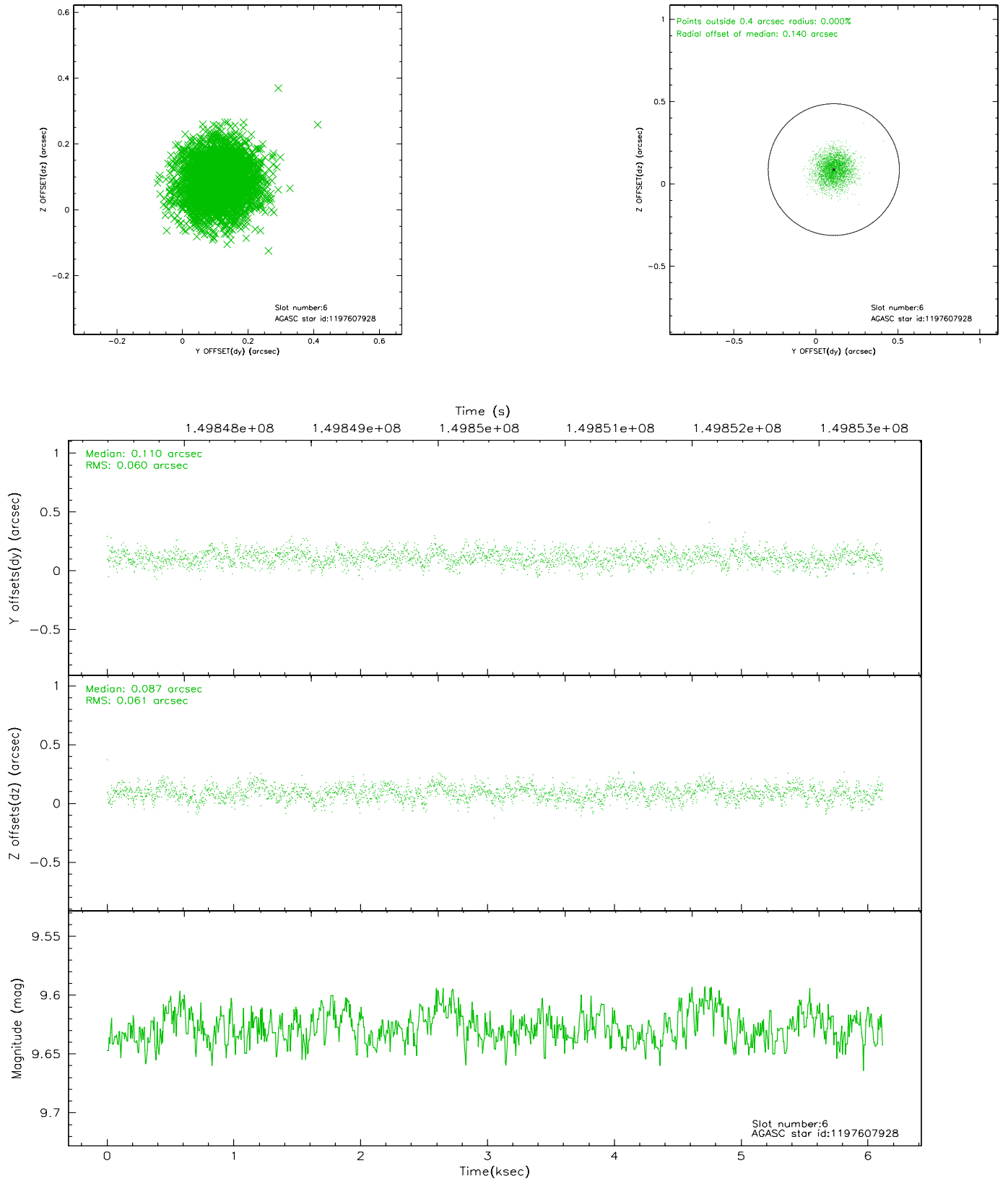
## 2.4.2 Slot 4



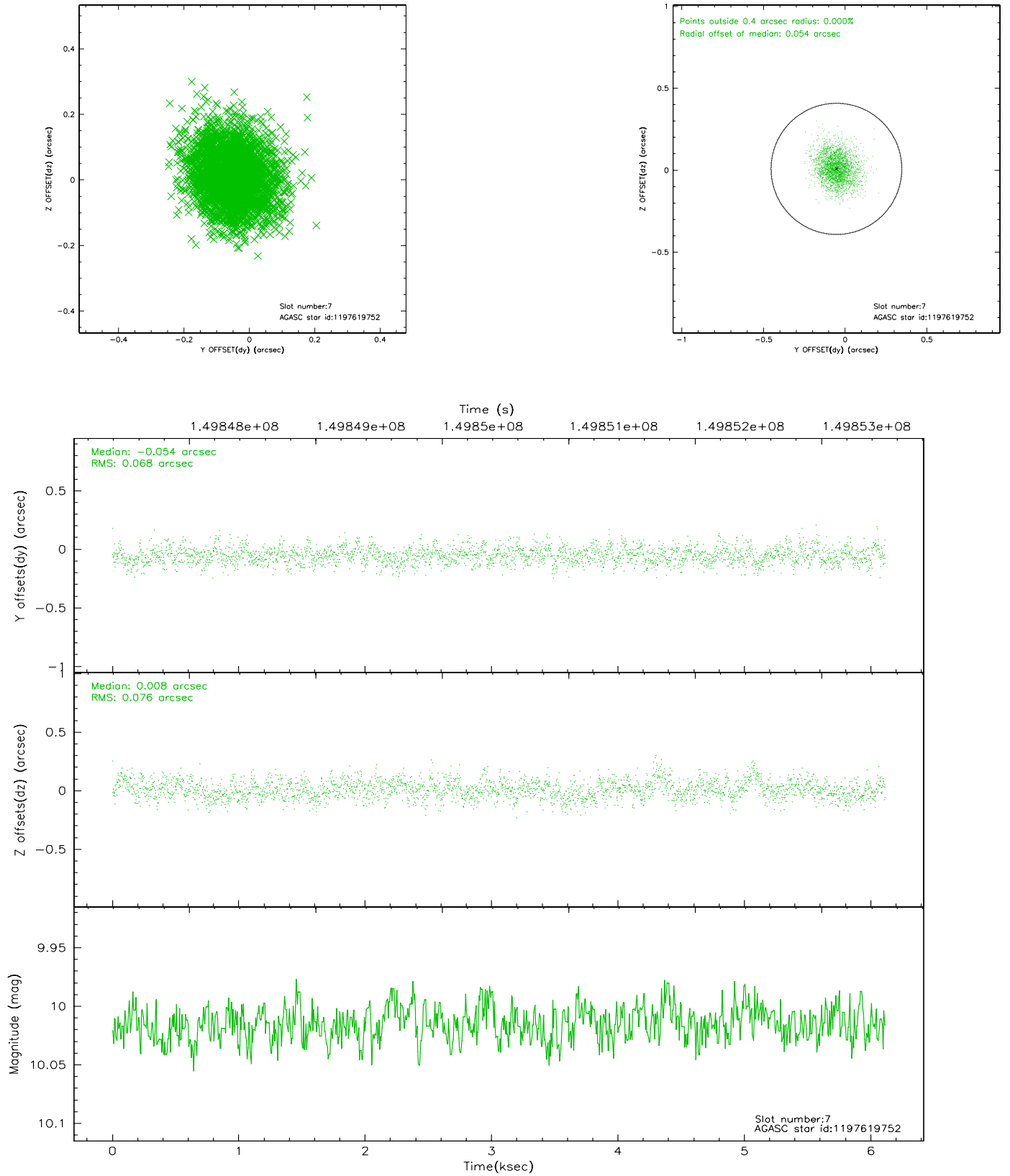
### 2.4.3 Slot 5



## 2.4.4 Slot 6

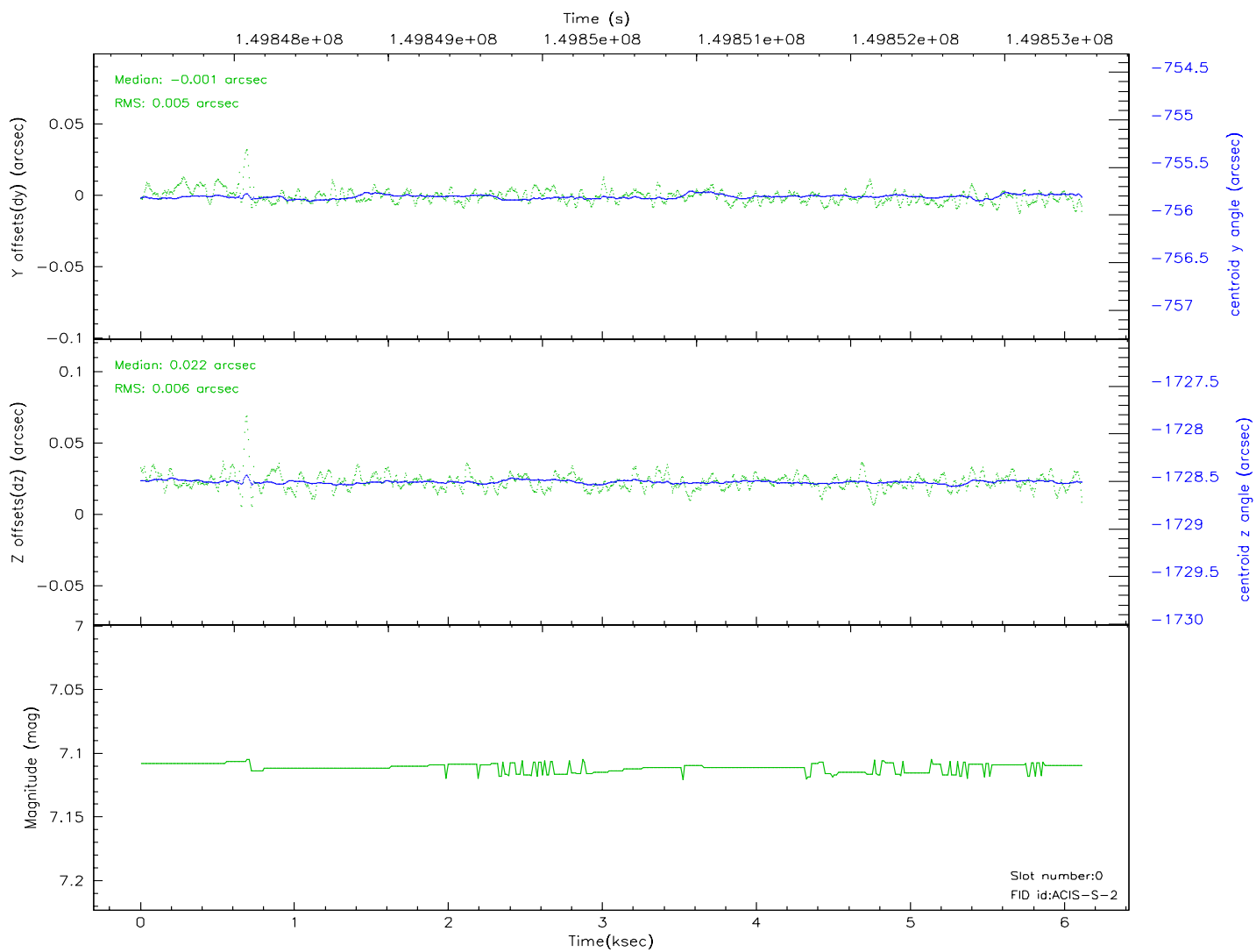
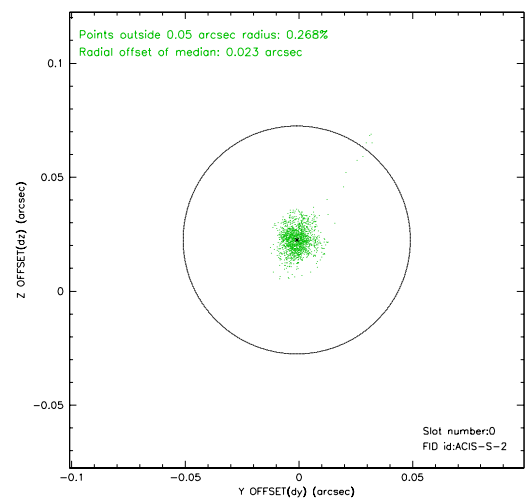
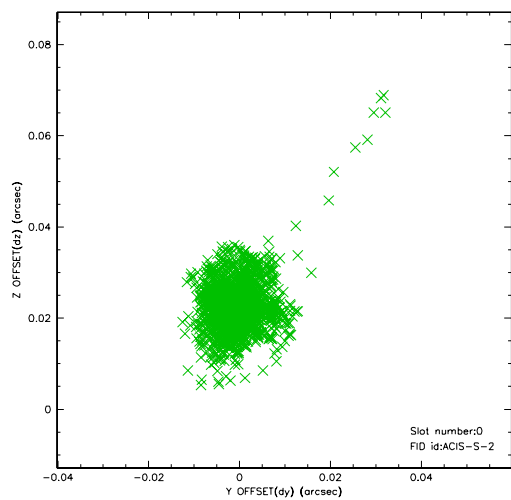


## 2.4.5 Slot 7

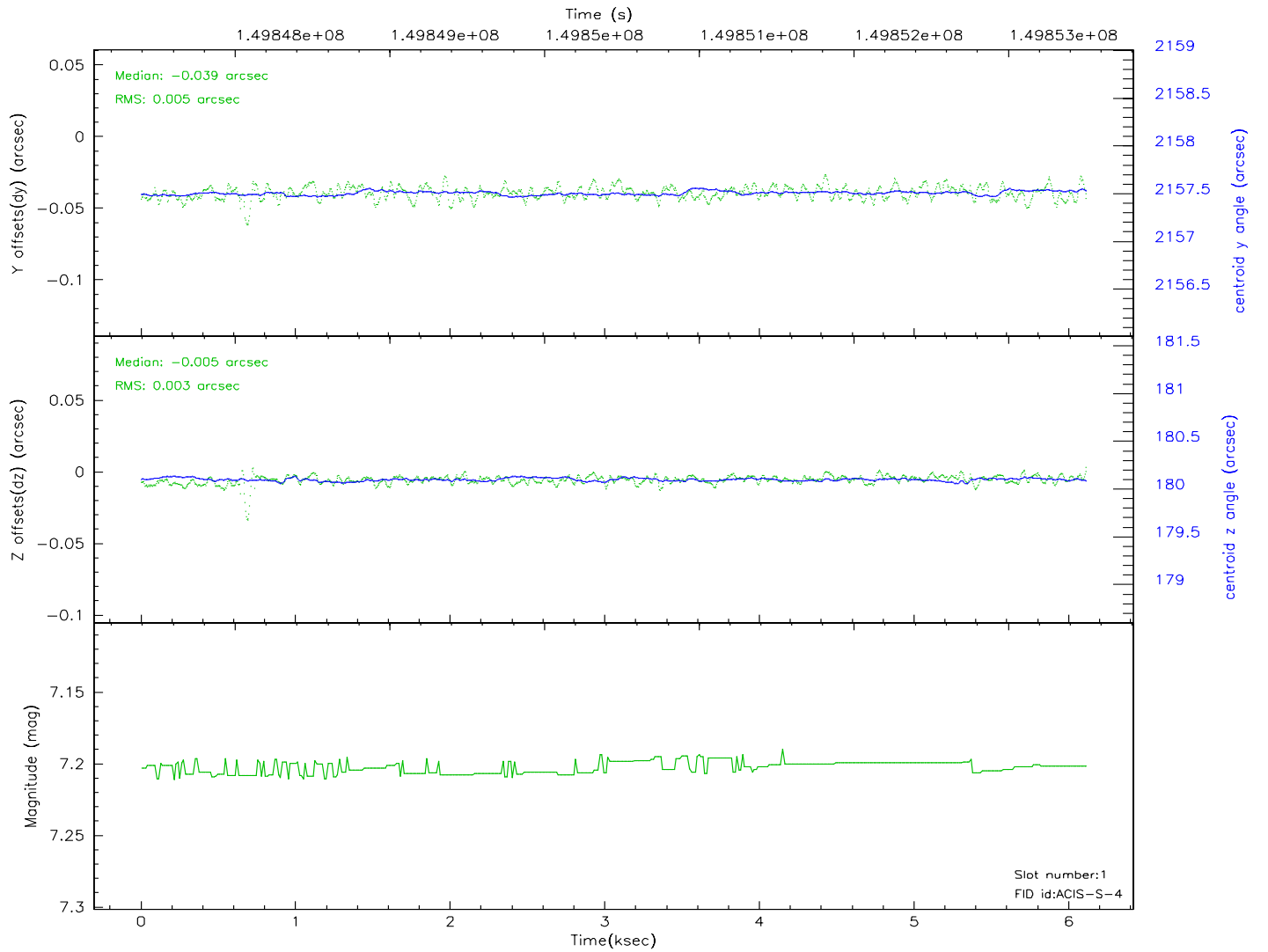
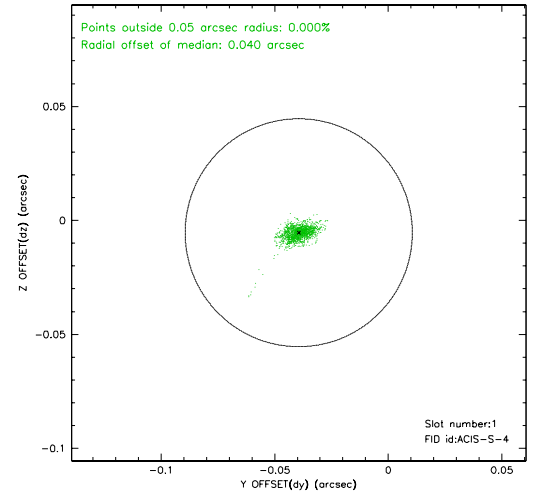
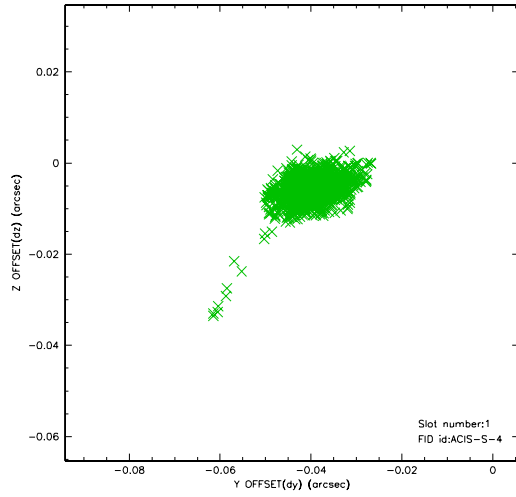


## 2.5 FID Slots

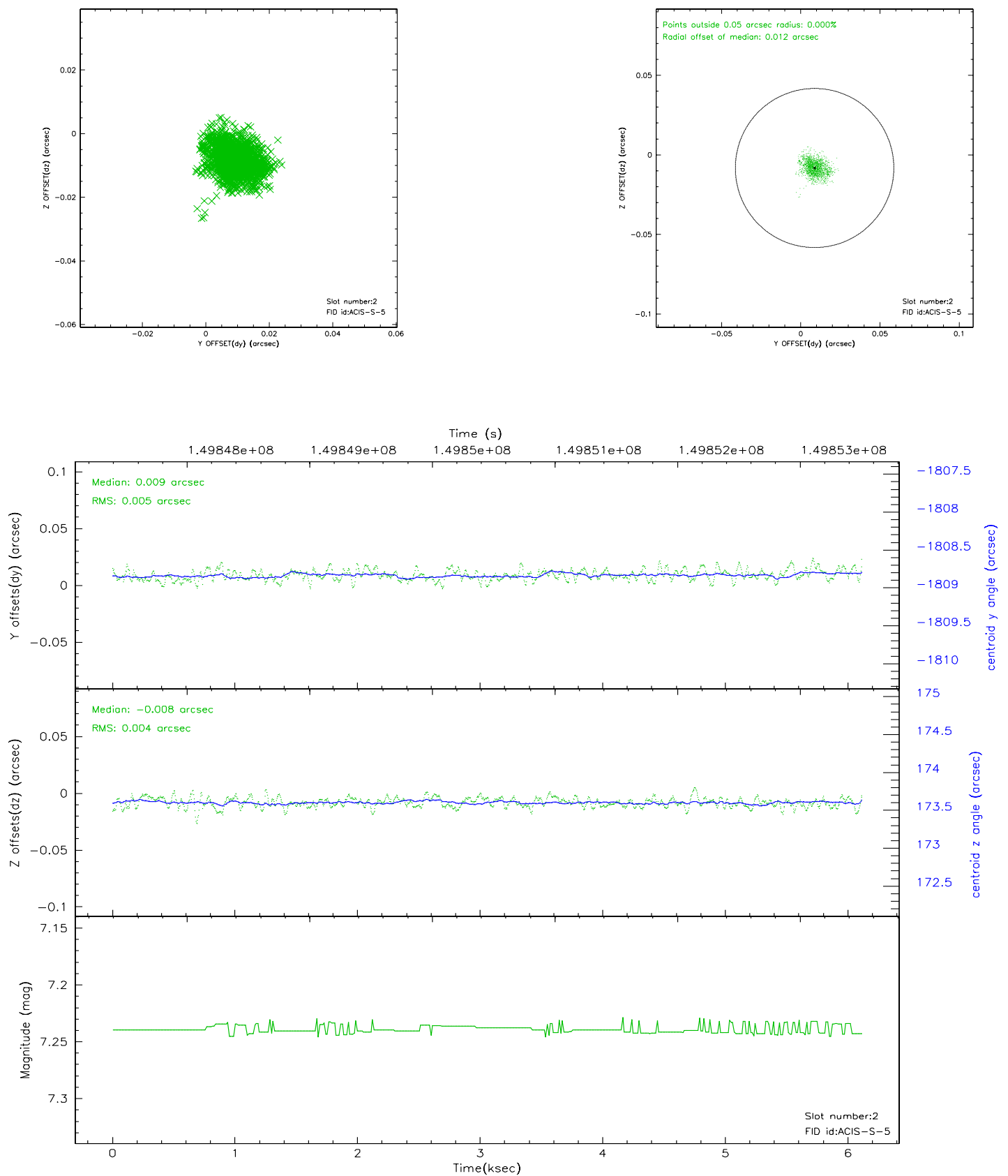
### 2.5.1 Slot 0



## 2.5.2 Slot 1



### 2.5.3 Slot 2





### 3 Point Sources

## A Summary

### A.1 Status

V&V Scientist	Jen Lauer
V&V Date (YYYY-MM-DD)	2006.10.05
V&V Edition	1
V&V Disposition and Status	OK
V&V Charge Time	5.58

### A.2 Comments

Monitor constraint met.