

V&V Reference Report

L2 ASCDS Version : 7.6.8.1

Observation 2748 - L2 Version 001
Chandra X-Ray Center

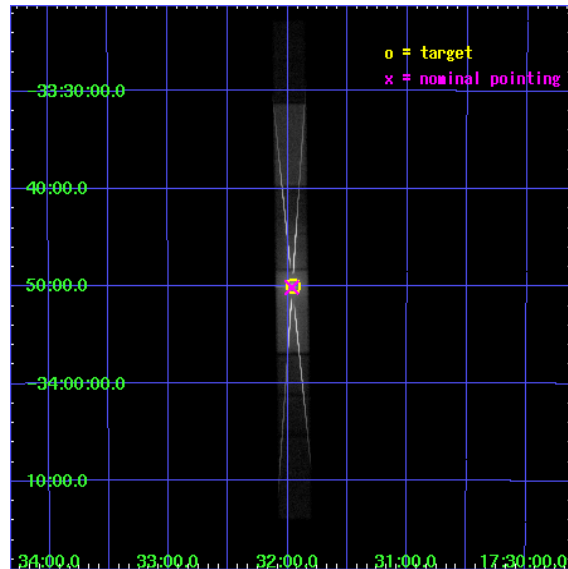
L2 Processing Date : Sep 6 2006

Contents

1	Front	2
2	OBI	3
2.1	OBI	3
2.1.1	Images	3
2.1.2	Parameters	4
2.1.3	Events	4
2.2	Compared Parameters	5
2.3	Aspect	6
2.4	Star Slots	9
2.4.1	Slot 3	9
2.4.2	Slot 4	10
2.4.3	Slot 5	11
2.4.4	Slot 6	12
2.4.5	Slot 7	13
2.5	FID Slots	14
2.5.1	Slot 0	14
2.5.2	Slot 1	15
2.5.3	Slot 2	16
3	Gratings	17
3.1	HEG Arm	17
3.2	MEG Arm	19
A	Summary	21
A.1	Status	21
A.2	Comments	21

1 Front

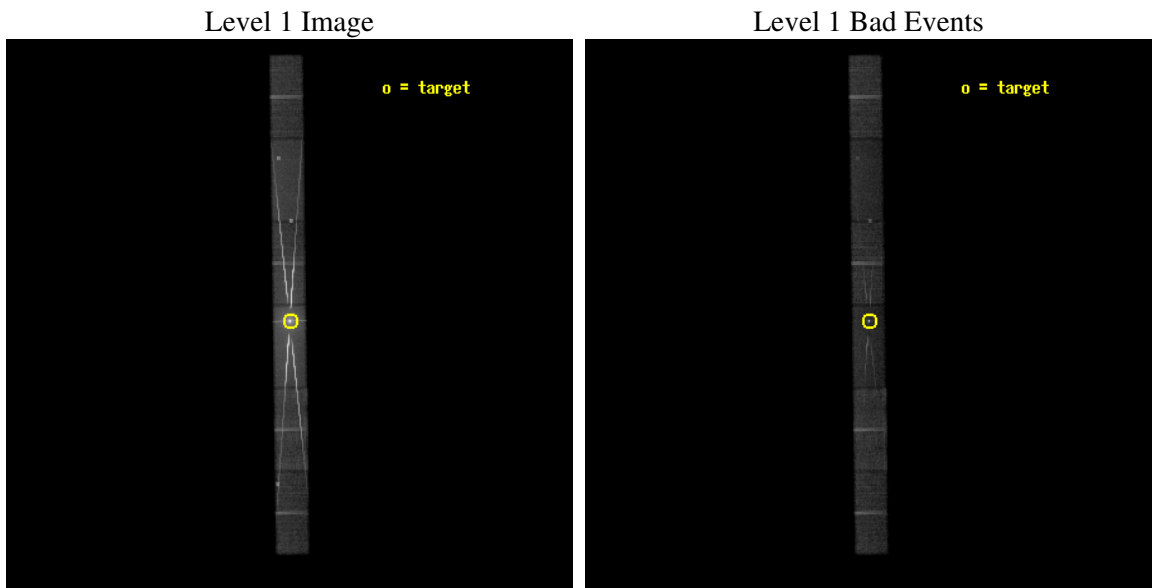
seq_num	400228
obs_id	2748
title	STUDY OF THE IRON LINE AND LOW ENERGY FEATURES IN 4U 1728-34 WITH CHANDRA/HETGS
observer	Dr. Tiziana Di Salvo
object	4U 1728-34
dtcycle	0
cycle	P
ra_targ	262.989167
dec_targ	-33.834722
ra_nom	262.99114995782
dec_nom	-33.836182089885
roll_nom	89.203764844643
revision	2
ontime	30483.559149623
livetime	29615.404714284
ontime4	30482.118139535
ontime5	30483.559149623
ontime6	30485.000129789
ontime7	30483.559149623
ontime8	30483.559149623
ontime9	30485.000129789
l2events	820083



2 OBI

2.1 OBI

2.1.1 Images



2.1.2 Parameters

obi_num	0
ascdsver	7.6.8.1
caldsver	3.2.3
date	2006-09-06T07:19:01
revision	2

sched_exp_time	30000.000000
ontime	30486.255112946
ontime4	30484.81408295
ontime5	30486.255112946
ontime6	30487.696073204
ontime7	30486.255112946
ontime8	30486.255093038
ontime9	30487.696073204
l1events	1360342

2.1.3 Events

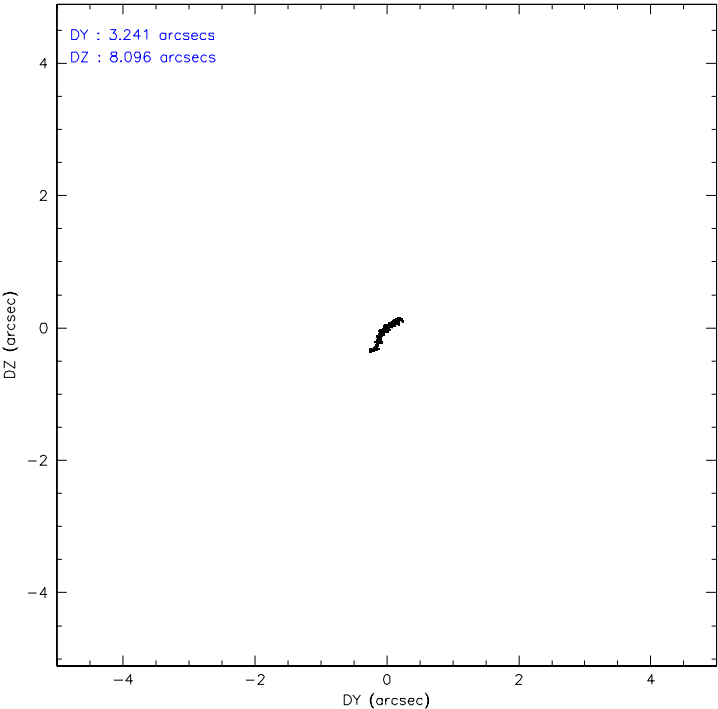
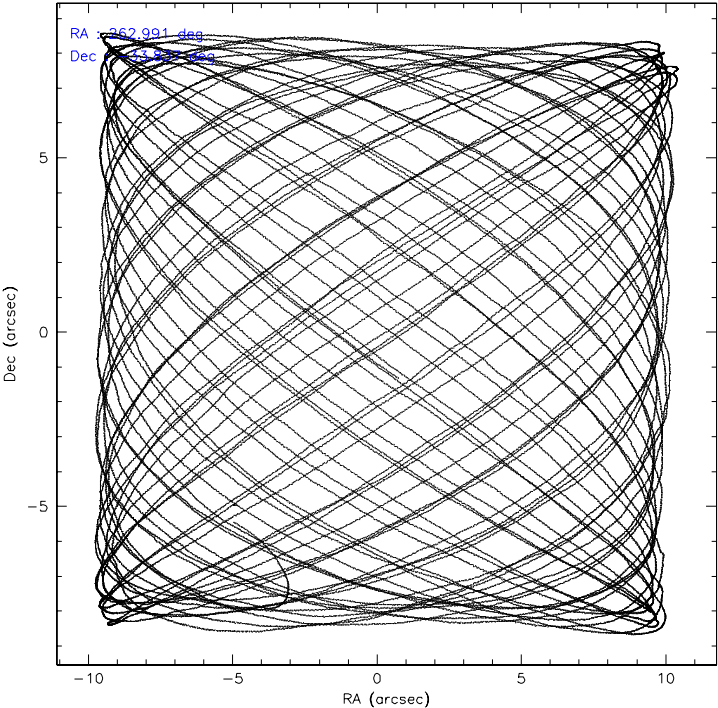
	ccd 4	ccd 5	ccd 6	ccd 7	ccd 8	ccd 9
level 1 events	103581	150383	351838	485791	172817	95932
rejected events	91132	66374	85601	74904	94778	76211
rejected %	87%	44%	24%	15%	54%	79%

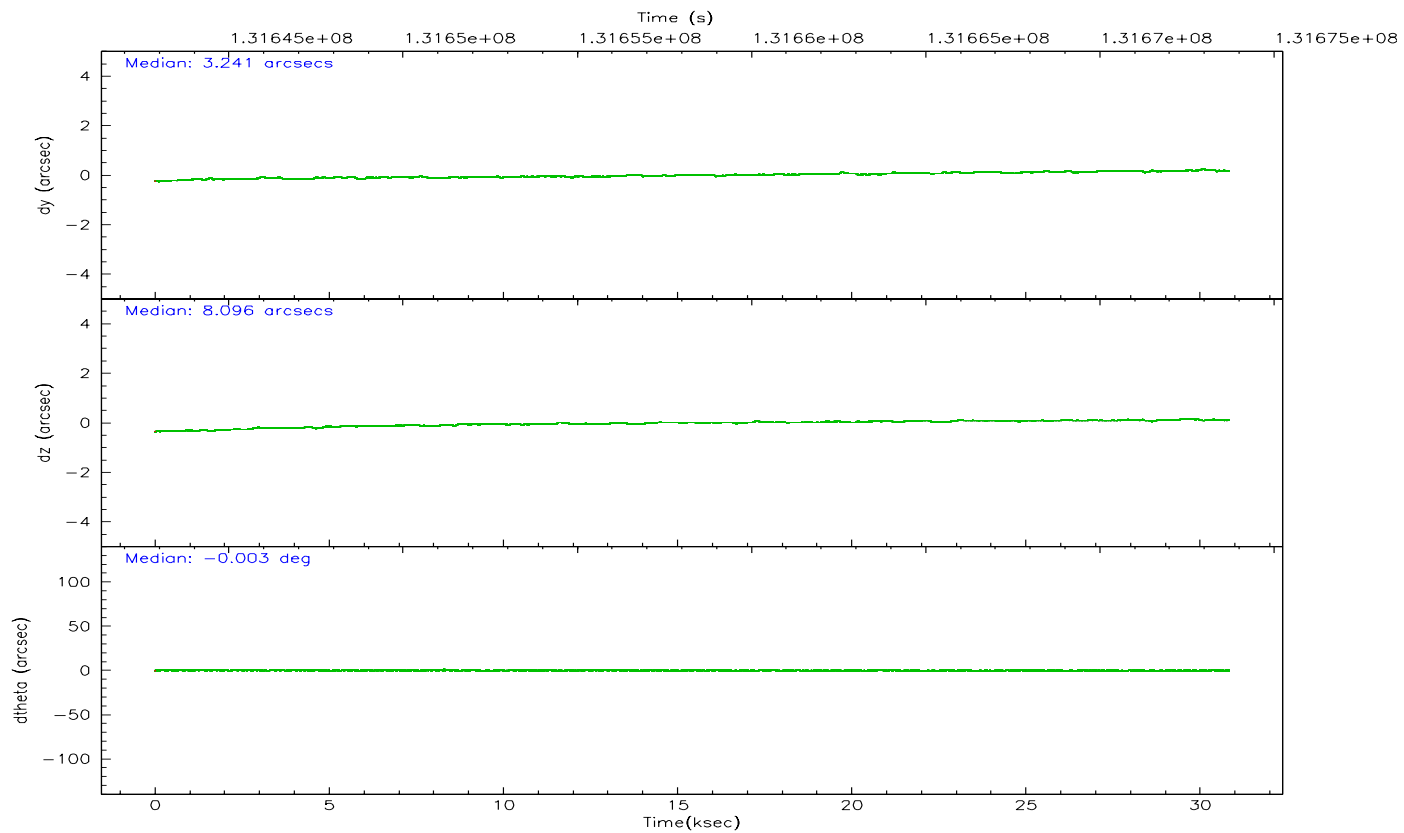
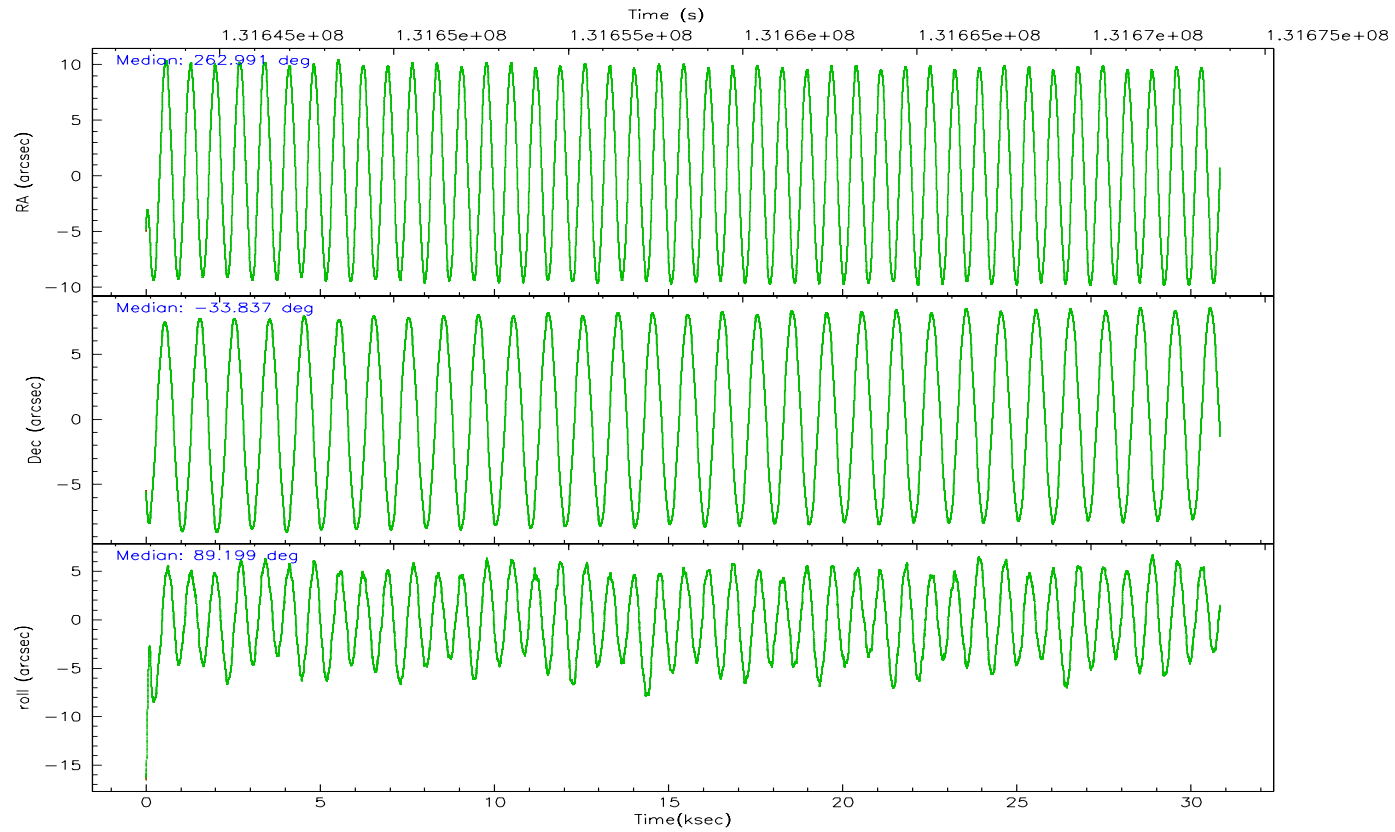
	ccd 4	ccd 5	ccd 6	ccd 7	ccd 8	ccd 9
grade 0 events	5109	14478	184942	67792	48864	11795
	4%	9%	52%	13%	28%	12%
grade 1 events	22	1034	1117	863	176	51
	0%	0%	0%	0%	0%	0%
grade 2 events	2755	25113	37235	103894	11272	2808
	2%	16%	10%	21%	6%	2%
grade 3 events	1406	4504	12835	39974	4783	1481
	1%	2%	3%	8%	2%	1%
grade 4 events	1259	4536	12848	39869	4473	1448
	1%	3%	3%	8%	2%	1%
grade 5 events	2692	7249	4420	13091	4306	3220
	2%	4%	1%	2%	2%	3%
grade 6 events	1921	35385	18400	159407	8653	2190
	1%	23%	5%	32%	5%	2%
grade 7 events	88417	58084	80041	60901	90290	72939
	85%	38%	22%	12%	52%	76%

2.2 Compared Parameters

Parameter	Planned	Actual	Parameter	Planned	Actual
Instrument	ACIS	ACIS	Obspar format version number	6	6
Detector	ACIS-456789	ACIS-456789	Obspar file type	PREDICTED	ACTUAL
Grating	HETG	HETG	Obspar update status	NONE	UPDATED
Data mode	GRADED	GRADED	On-chip summing requested	N	N
Observation mode	POINTING	POINTING	Subarray requested	CUSTOM	CUSTOM
Pointing RA	263.007537	262.991149957823	Subarray start row	1	1
Pointing Dec	-33.859815	-33.83618208988484	Subarray row count	400	400
Pointing Roll	89.056272	89.20376484464336	Alternating exposures requested	N	N
Window start time	131587264.184000	131587264.184000	Primary exposure time	0.000000	1.4
Window stop time	132105664.184000	132105664.184000			
SIM focus pos (mm)	-0.684267	-0.6828225247311905			
SIM defocus (mm)	0	0.001444936568705701			
SIM translation stage pos (mm)	-182.642523	-182.6373491900168			
SIM translation stage offset (mm)	-7.49	-7.495173392990978			
Observation start time	131643713.184000	131642434.705			
Observation start date	2002-03-04T15:40:49	2002-03-04T15:20:34			
Observation end time	131673713.184000	131675245.98132			
Observation end date	2002-03-05T00:00:49	2002-03-05T00:27:25			
Read mode	TIMED	TIMED			

2.3 Aspect



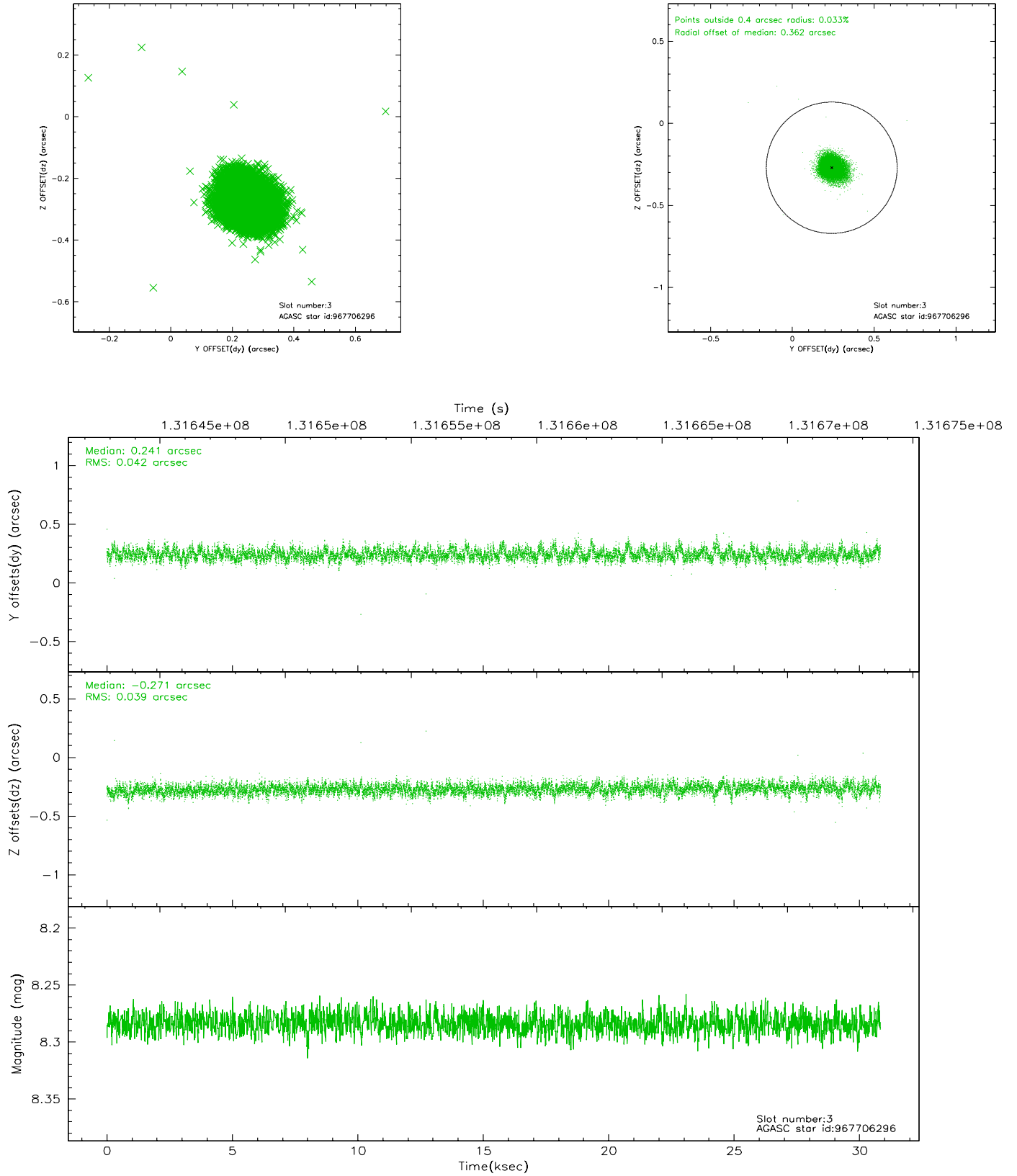


Slot Statistics

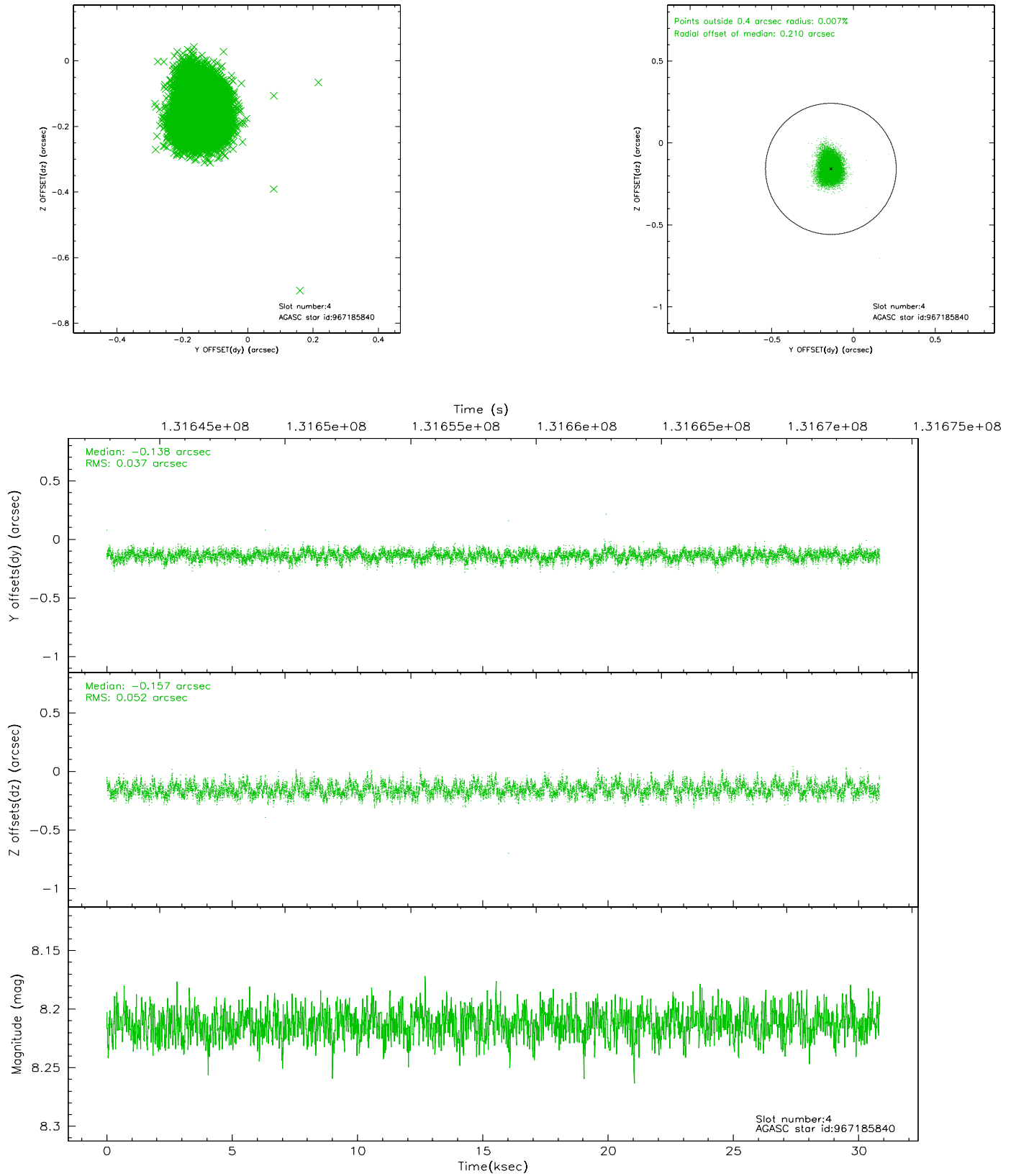
slot	status	id	mag	n_pts	med_dy	med_dz	dr1	dr2	ra	dec	mean_y	mean_z
0	FID	ACIS-S-2	7.09	7519	-0.017	-0.090	0.007	0.012	0.000000	0.000000	-755.41	-1883.76
1	FID	ACIS-S-4	7.18	7518	-0.051	0.032	0.008	0.013	0.000000	0.000000	2157.84	24.69
2	FID	ACIS-S-5	7.23	7520	0.036	0.066	0.007	0.012	0.000000	0.000000	-1808.07	18.54
3	GUIDE	967706296	8.28	15032	0.241	-0.271	0.060	0.098	262.582774	-34.480498	-2256.07	1222.95
4	GUIDE	967185840	8.21	15037	-0.138	-0.157	0.067	0.110	262.638986	-33.654421	720.13	1116.22
5	GUIDE	967311664	8.35	15039	-0.194	0.301	0.103	0.155	263.779418	-33.687761	650.12	-2301.51
6	GUIDE	967185024	8.66	15030	-0.142	-0.114	0.056	0.090	262.820462	-33.346243	1840.03	592.68
7	GUIDE	967839384	9.21	15031	0.233	0.243	0.089	0.143	263.774555	-34.464522	-2145.91	-2312.44

2.4 Star Slots

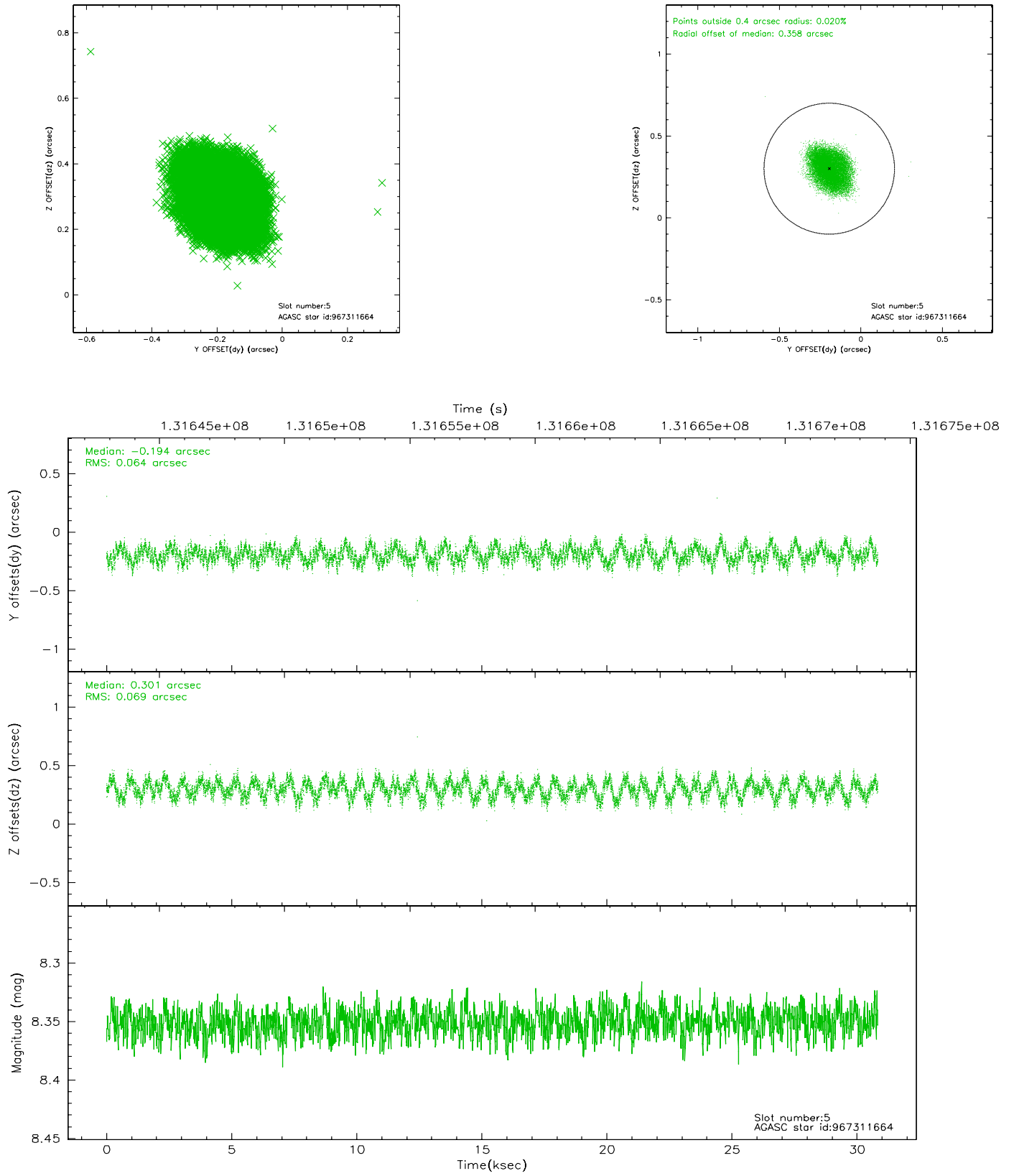
2.4.1 Slot 3



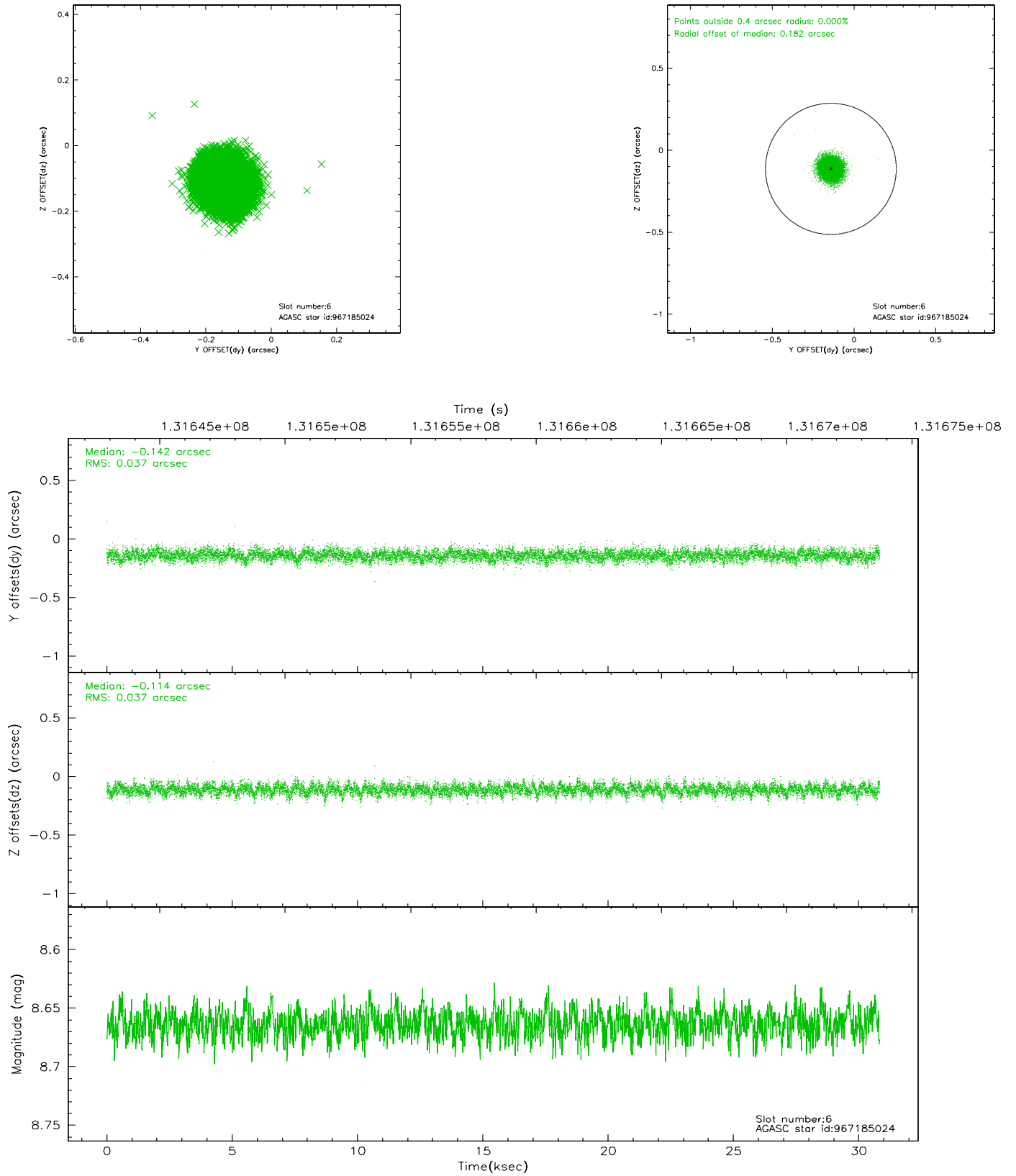
2.4.2 Slot 4



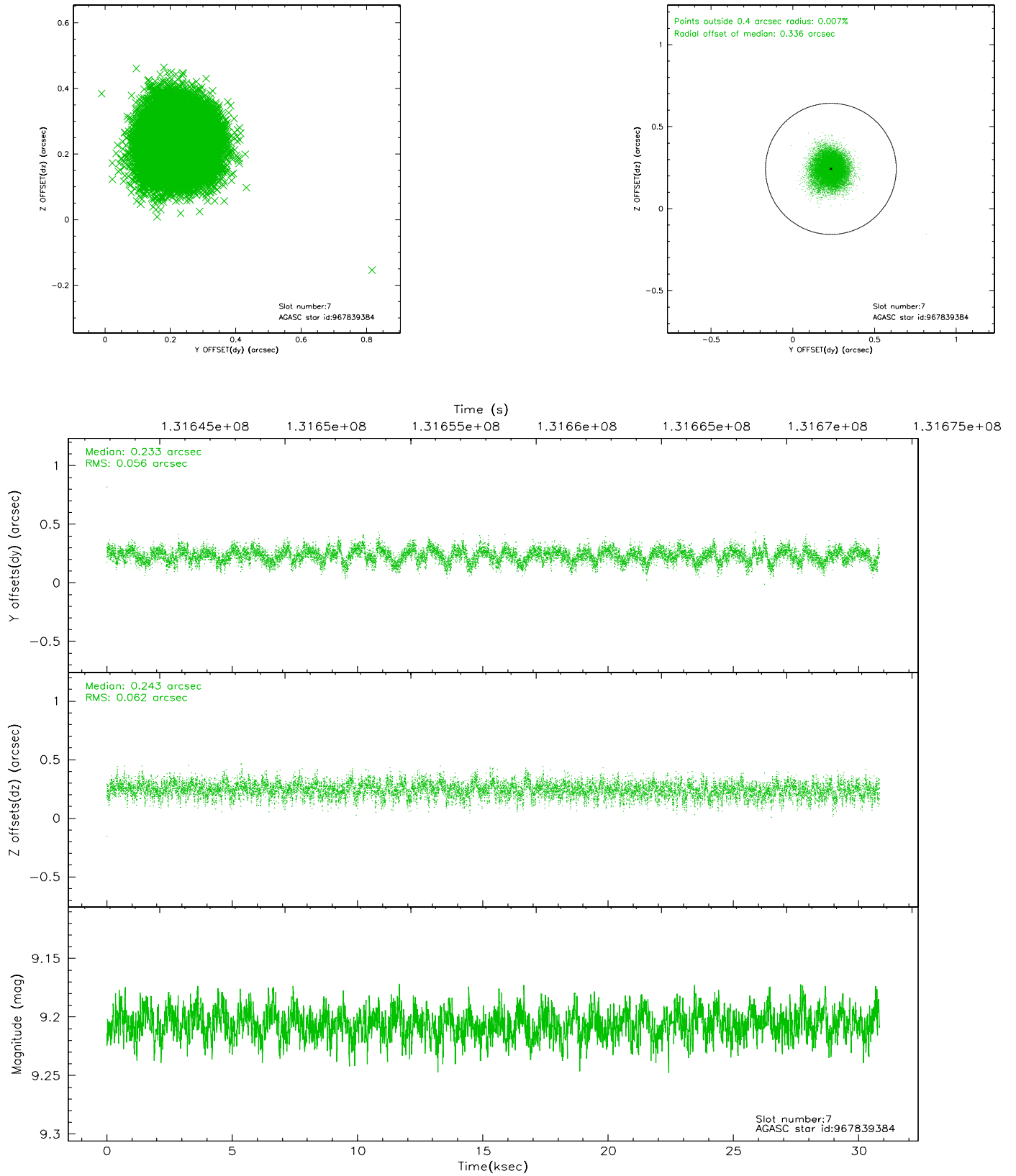
2.4.3 Slot 5



2.4.4 Slot 6

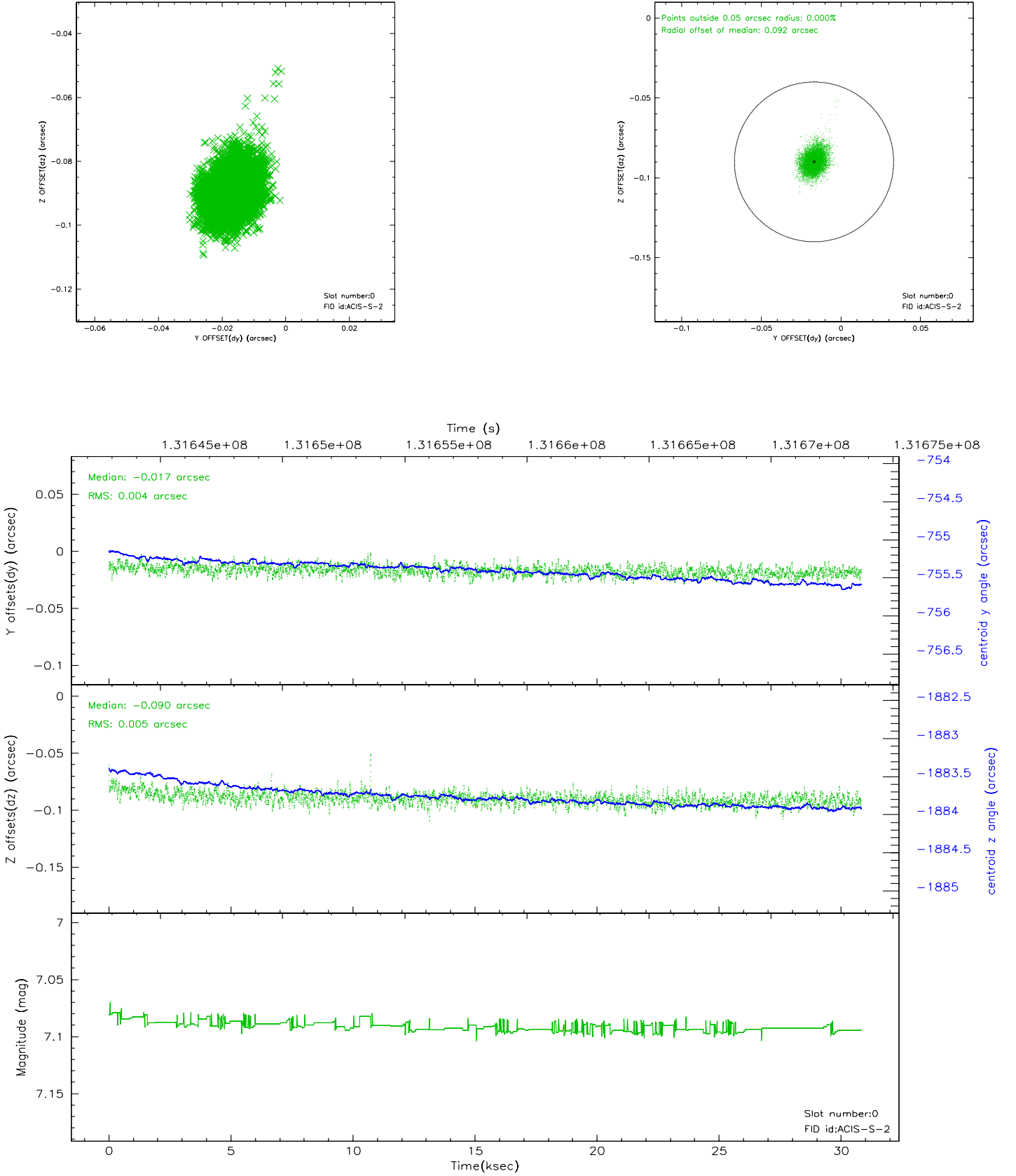


2.4.5 Slot 7

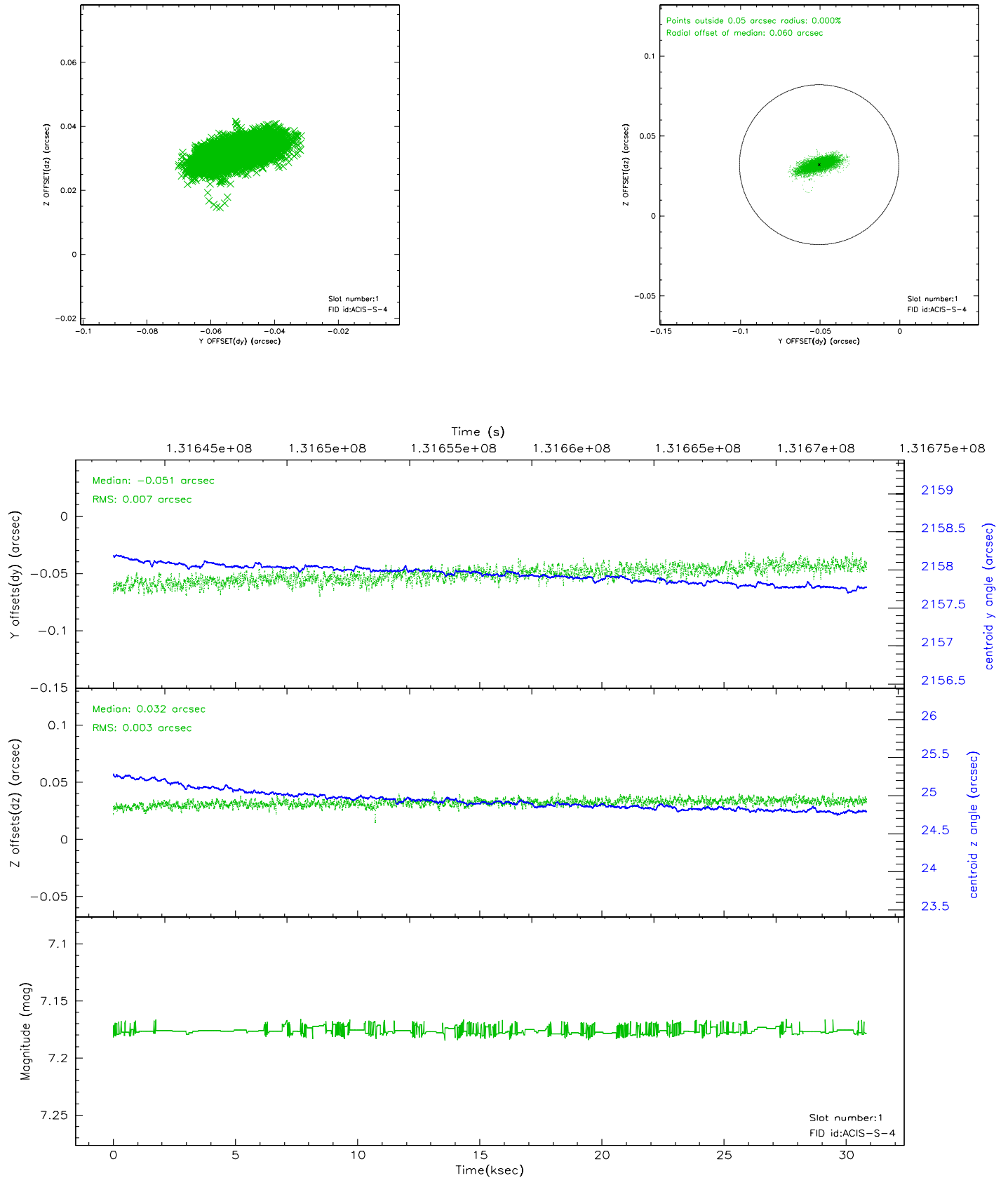


2.5 FID Slots

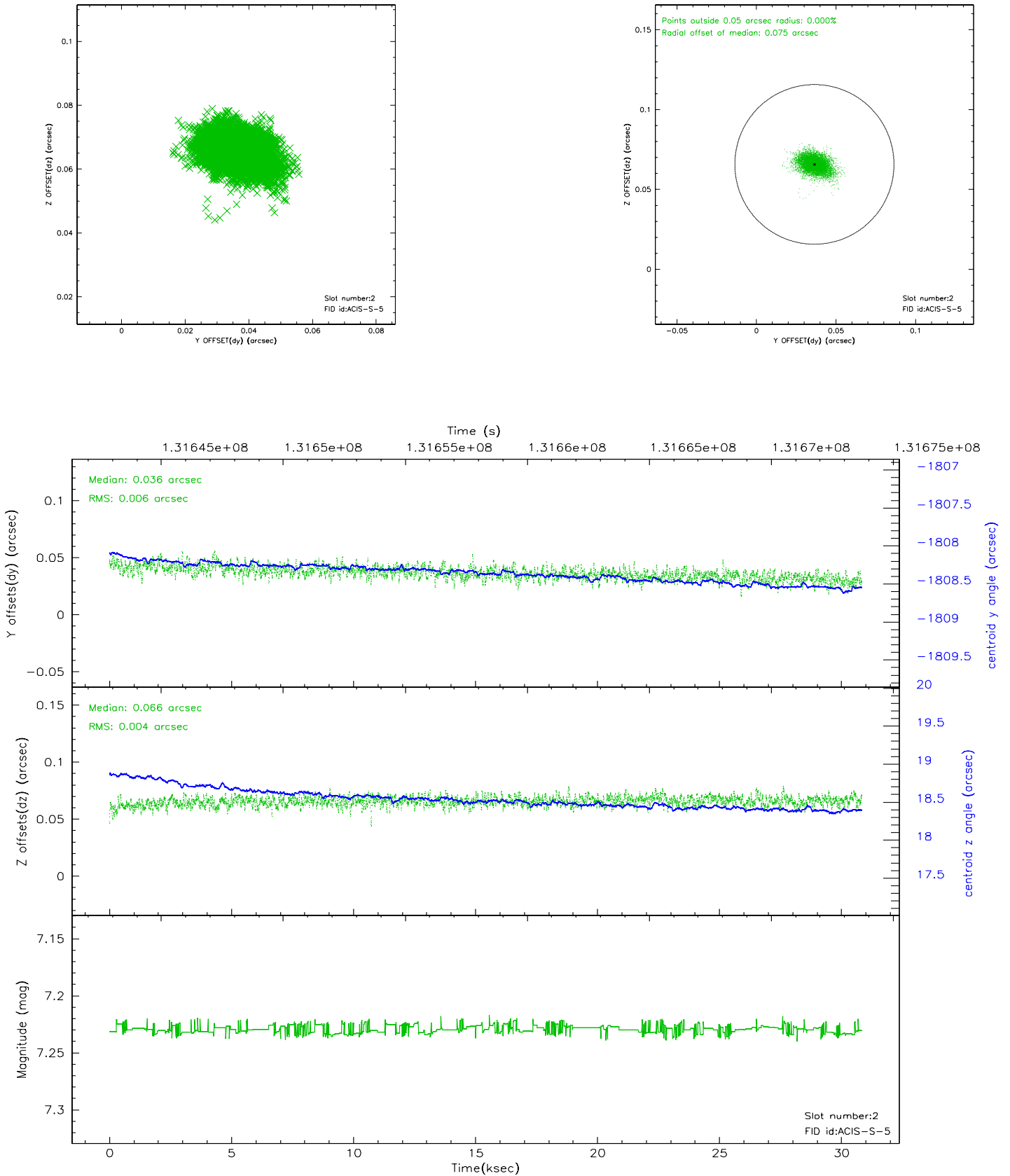
2.5.1 Slot 0



2.5.2 Slot 1

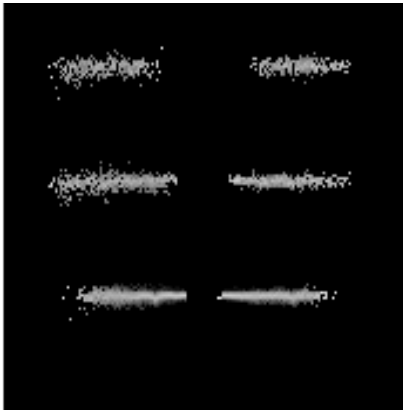


2.5.3 Slot 2

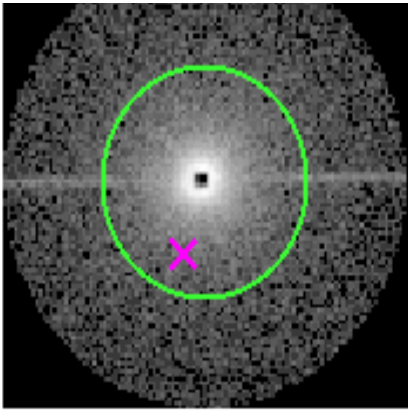


3 Gratings

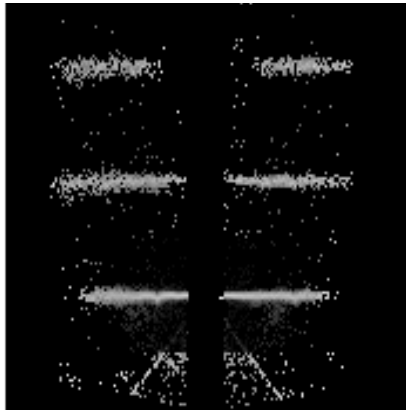
3.1 HEG Arm



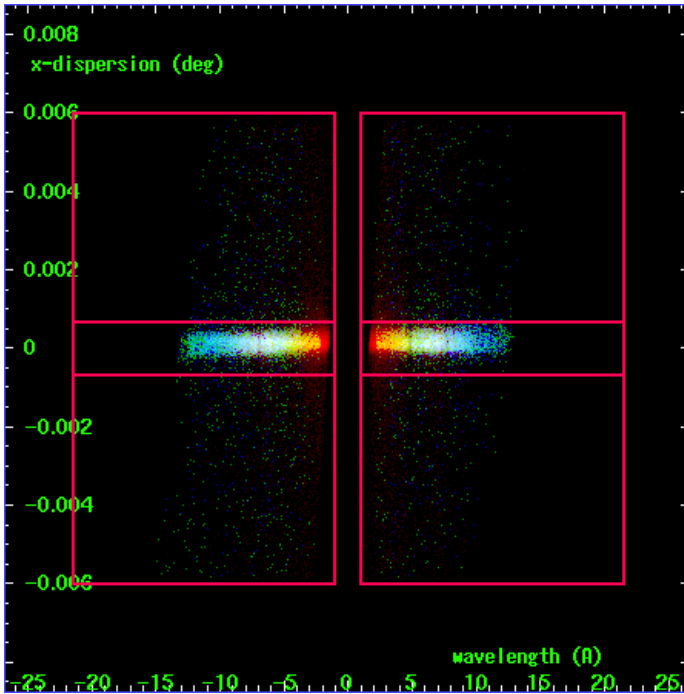
HEG Order Sort 123



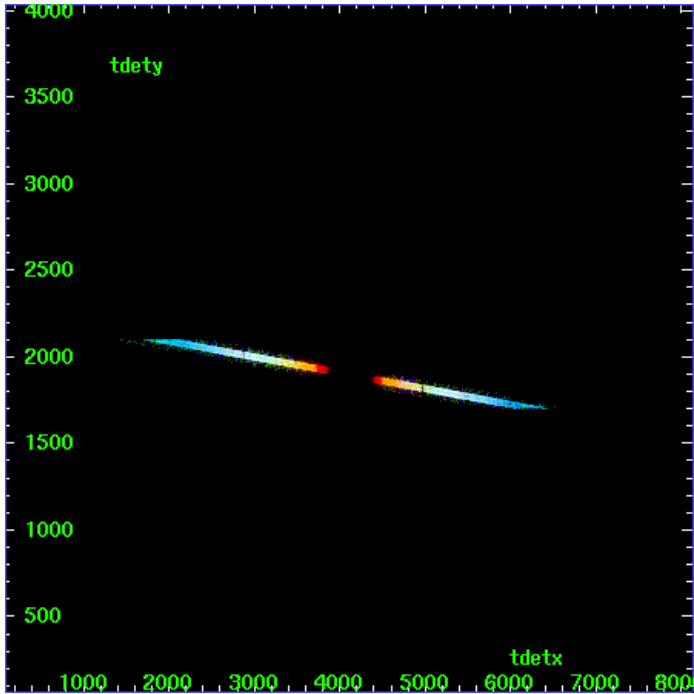
HEG Zero Order



HEG Order Sort ALL

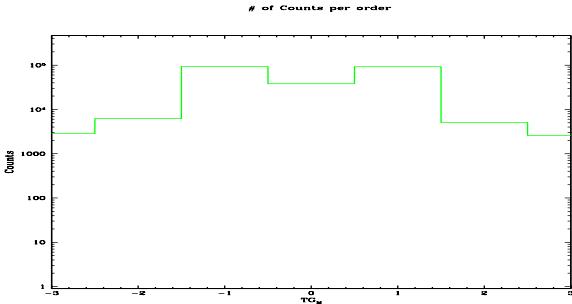


Spot Image HEG

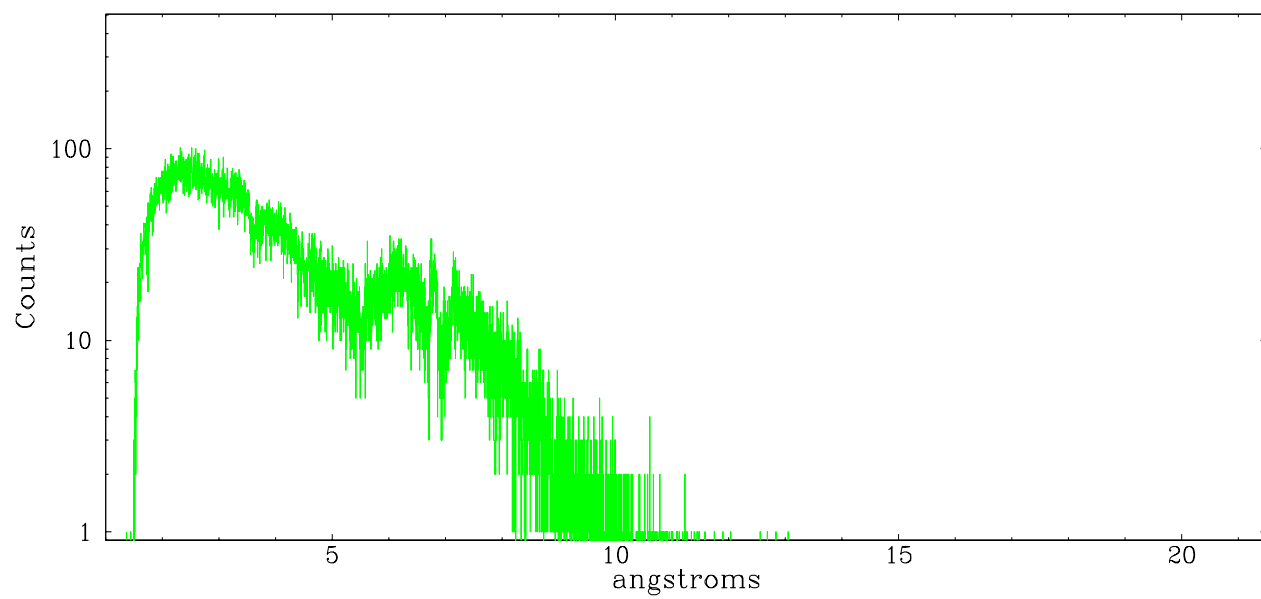


Full Detector HEG

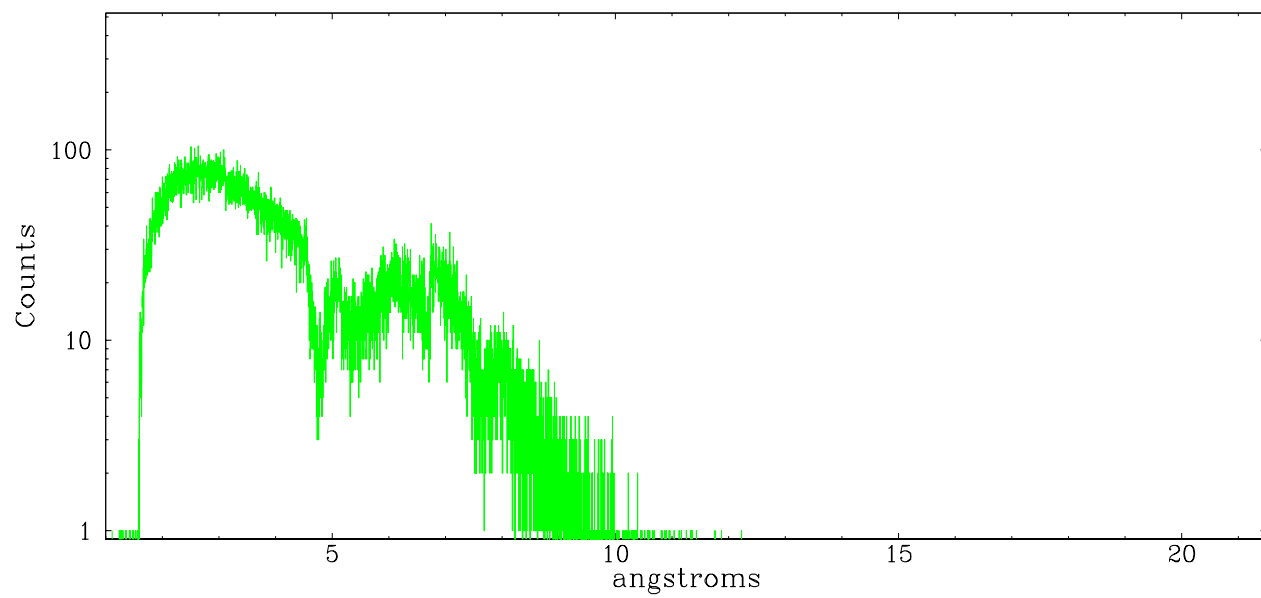
	order -3	order -2	order -1	order 0	order 1	order 2	order 3
Events	2853	6219	92720	37934	92031	5061	2591



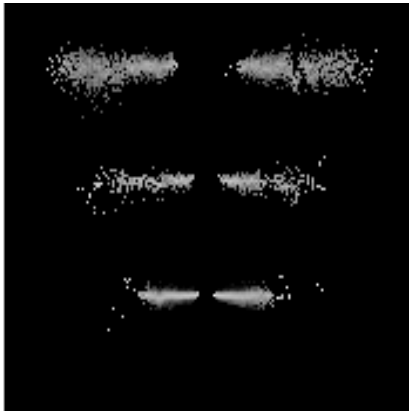
heg order -1



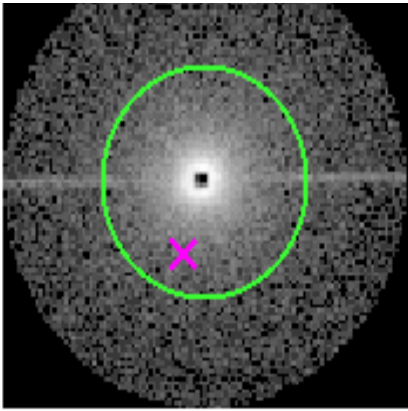
heg order +1



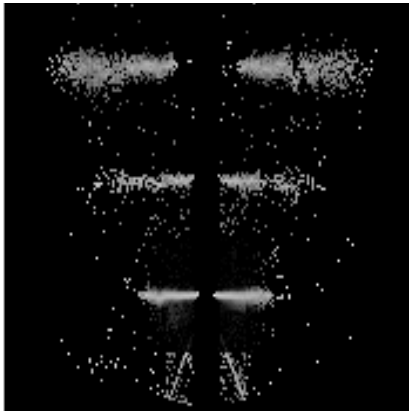
3.2 MEG Arm



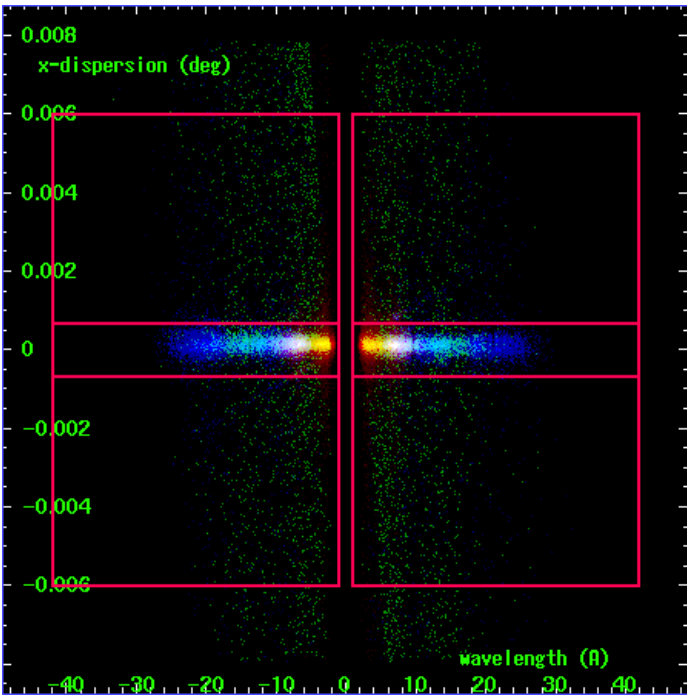
MEG Order Sort 123



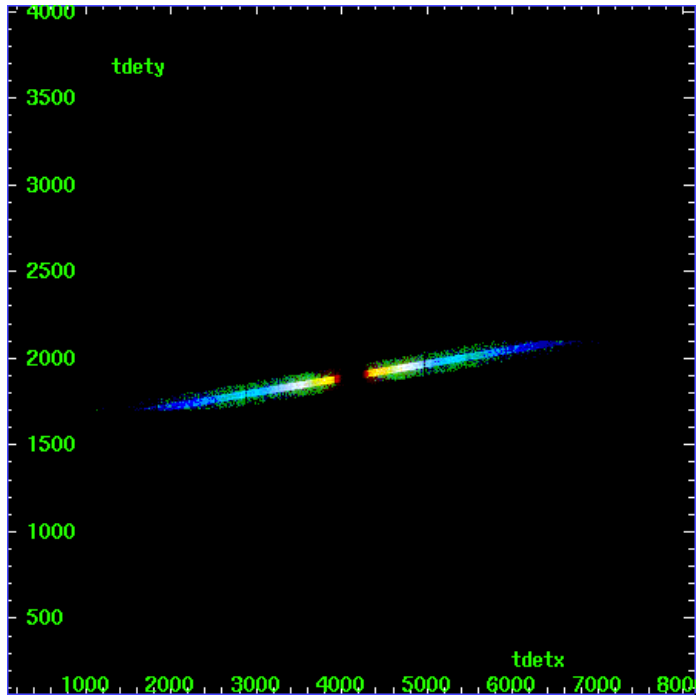
MEG Zero Order



MEG Order Sort ALL

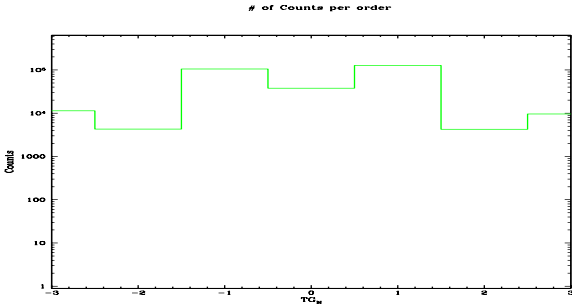


Spot Image MEG

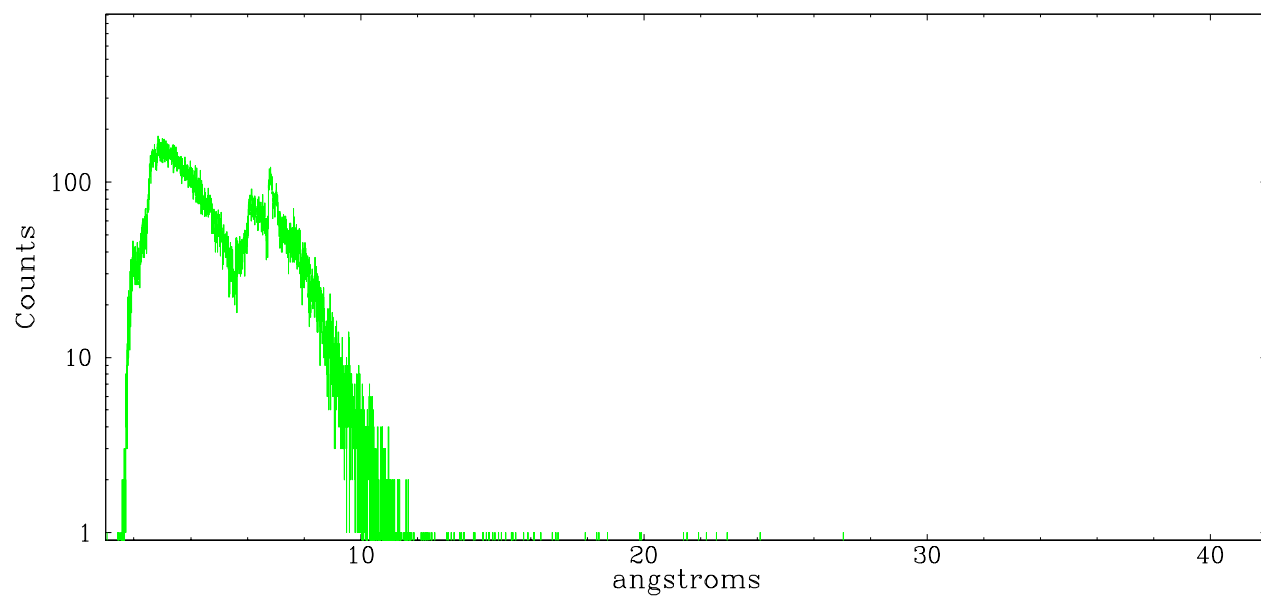


Full Detector MEG

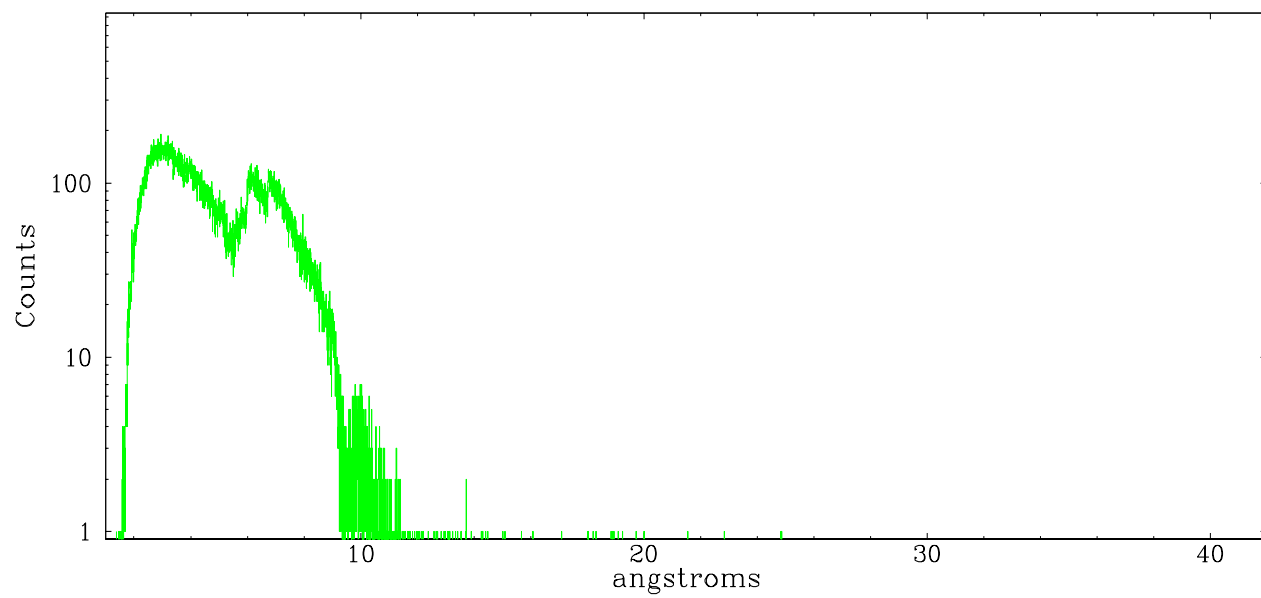
	order -3	order -2	order -1	order 0	order 1	order 2	order 3
Events	11322	4295	105562	37934	126475	4247	9614



meg order -1



meg order +1



A Summary

A.1 Status

V&V Scientist	Beth Sundheim
V&V Date (YYYY-MM-DD)	2006.09.06
V&V Edition	1
V&V Disposition and Status	OK
V&V Charge Time	30.484

A.2 Comments

Window constraint satisfied.