

V&V Reference Report

L2 ASCDS Version : 7.6.9

Observation 2736 - L2 Version 001
Chandra X-Ray Center

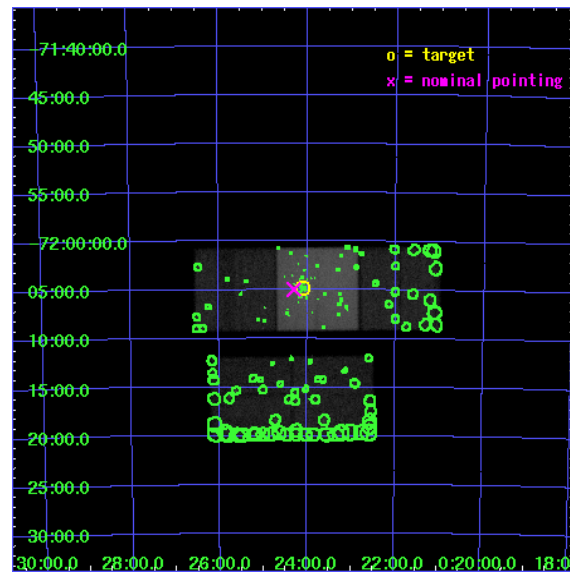
L2 Processing Date : Oct 5 2006

Contents

1	Front	2
2	OBI	3
2.1	OBI	3
2.1.1	Images	3
2.1.2	Bias	3
2.1.3	Parameters	4
2.1.4	Events	4
2.2	Compared Parameters	5
2.3	Aspect	6
2.4	Star Slots	9
2.4.1	Slot 3	9
2.4.2	Slot 4	10
2.4.3	Slot 5	11
2.4.4	Slot 6	12
2.4.5	Slot 7	13
2.5	FID Slots	14
2.5.1	Slot 0	14
2.5.2	Slot 1	15
2.5.3	Slot 2	16
3	Point Sources	17
A	Summary	18
A.1	Status	18
A.2	Comments	18

1 Front

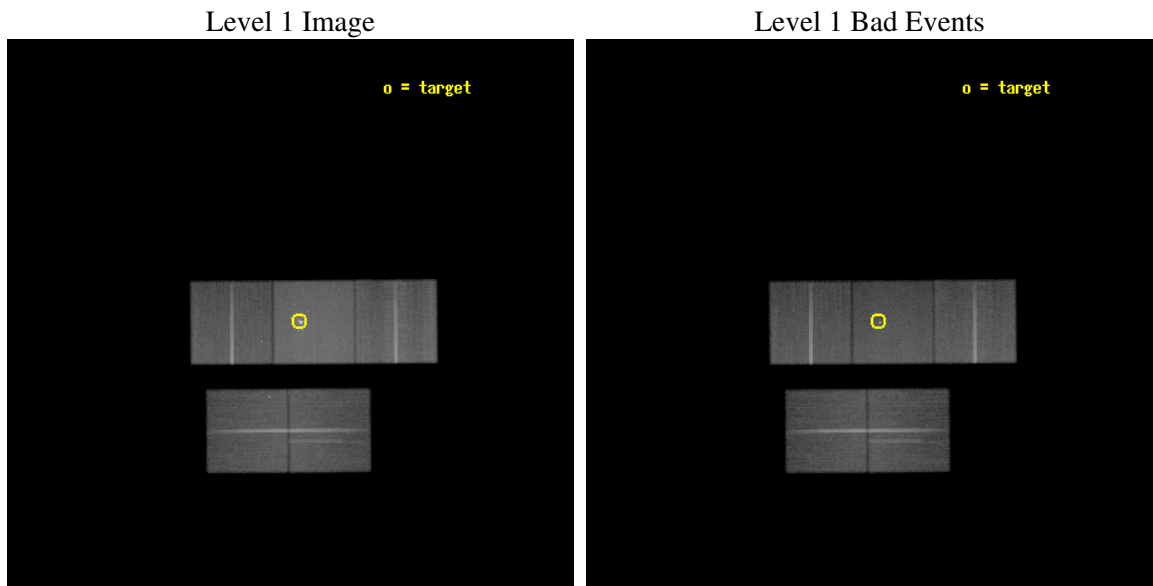
seq_num	400216
obs_id	2736
title	COMPLETE COMPACT OBJECT AND BINARY SURVEY OF 47TUC
observer	Prof. Jonathan Grindlay
object	47 TUCANAE
dtcycle	0
cycle	P
ra_targ	6.024167
dec_targ	-72.080889
ra_nom	6.0751623920729
dec_nom	-72.082735621107
roll_nom	359.56908398194
revision	2
ontime	66107.499872893
livetime	65243.75671942
ontime2	66094.935982108
ontime3	66104.358882725
ontime6	66107.499872893
ontime7	66107.499872893
ontime8	66107.499872893
l2events	505123



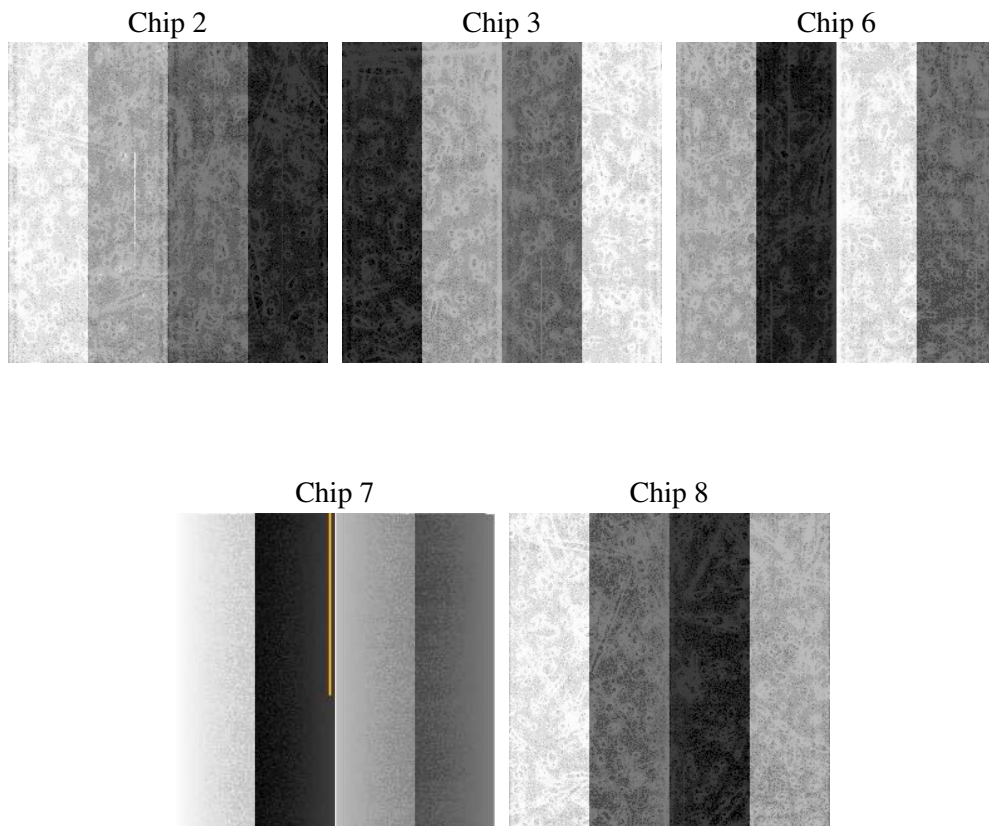
2 OBI

2.1 OBI

2.1.1 Images



2.1.2 Bias



2.1.3 Parameters

obi_num	0
ascdsver	7.6.9
caldbver	3.2.3
date	2006-10-05T19:03:01
revision	2

sched_exp_time	66000.000000
ontime	66111.817417651
ontime2	66099.253506929
ontime3	66108.676407546
ontime6	66111.817397714
ontime7	66111.817417651
ontime8	66111.817397714
l1events	2452580

2.1.4 Events

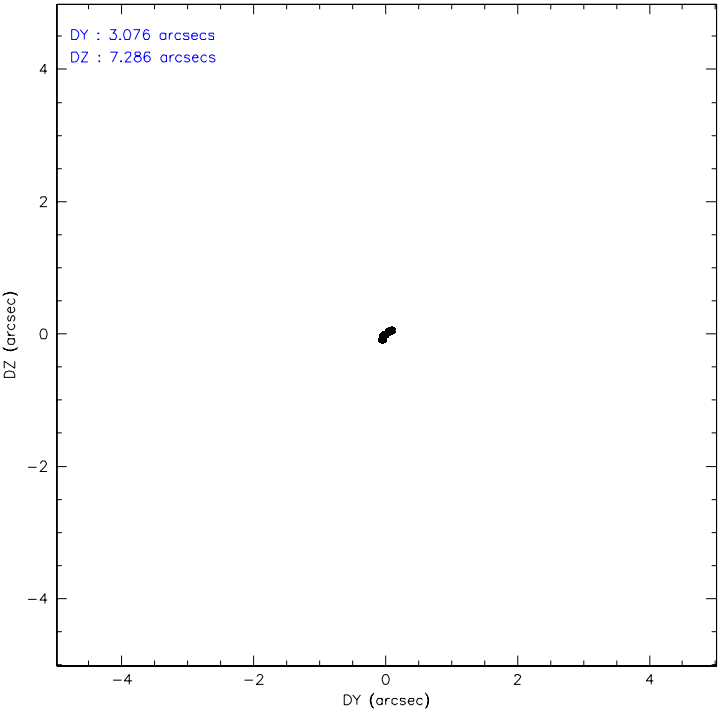
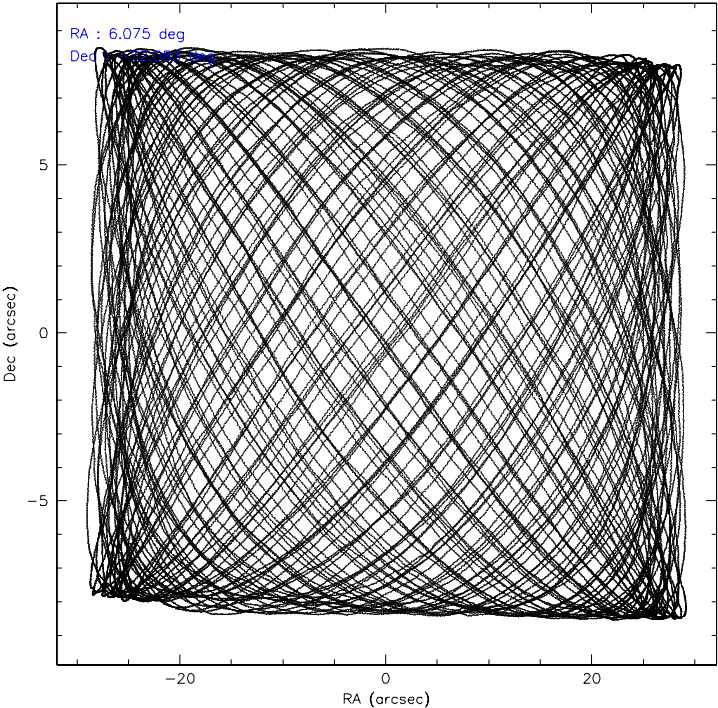
	ccd 2	ccd 3	ccd 6	ccd 7	ccd 8
level 1 events	413367	413426	434582	652977	538228
rejected events	358426	359719	373428	351051	419310
rejected %	86%	87%	85%	53%	77%

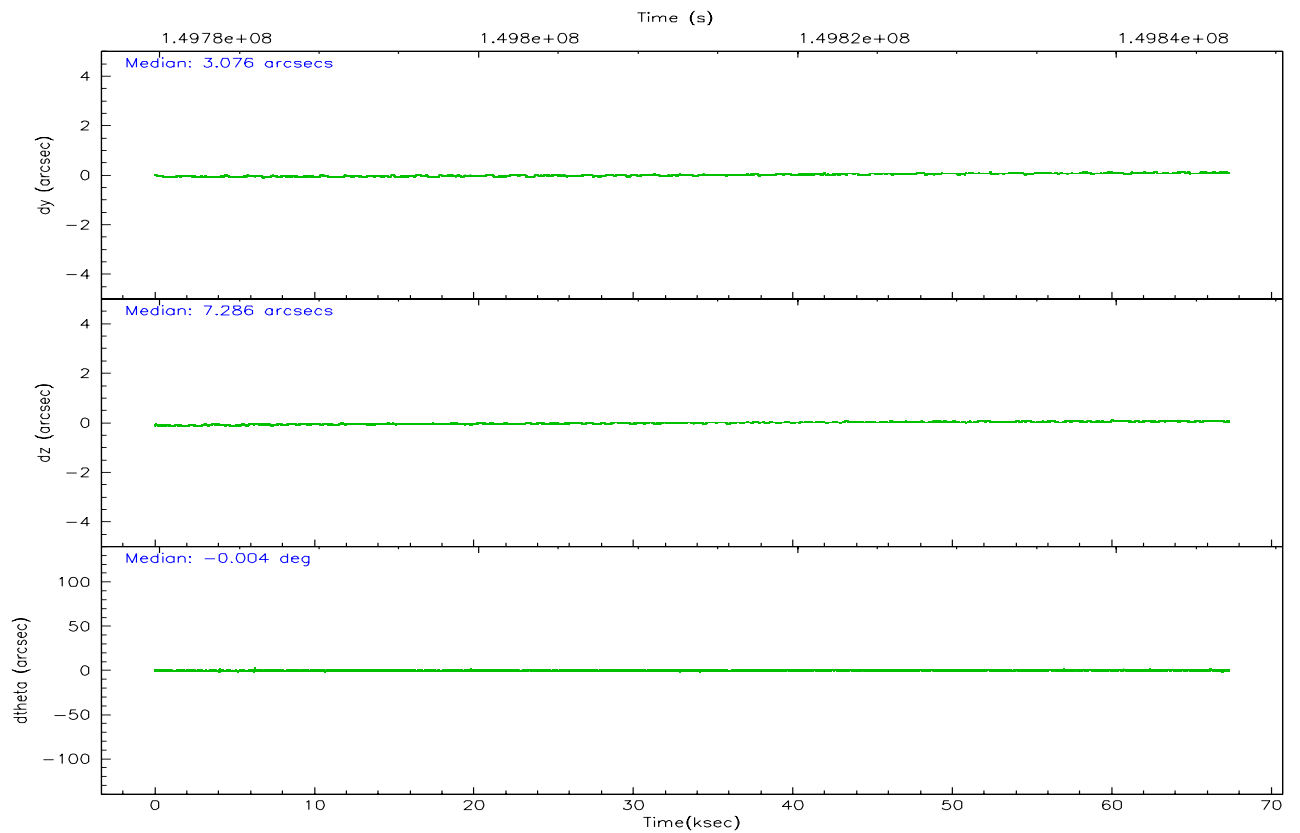
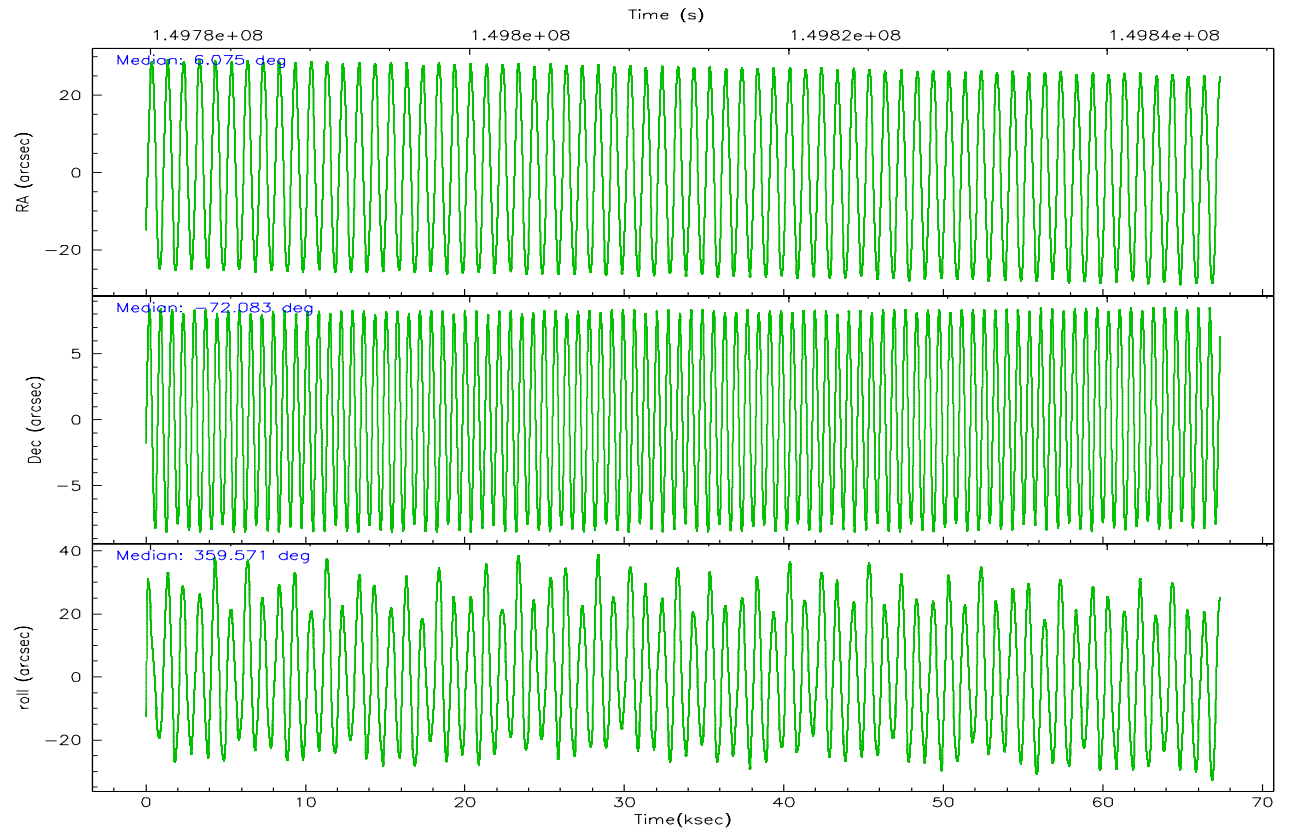
	ccd 2	ccd 3	ccd 6	ccd 7	ccd 8
grade 0 events	27179	26057	29594	29231	43292
	6%	6%	6%	4%	8%
grade 1 events	257	268	231	623	364
	0%	0%	0%	0%	0%
grade 2 events	10150	9546	11554	71350	24080
	2%	2%	2%	10%	4%
grade 3 events	4876	4879	5023	18109	12255
	1%	1%	1%	2%	2%
grade 4 events	4791	4861	5041	17680	11290
	1%	1%	1%	2%	2%
grade 5 events	15367	17446	18500	39057	24463
	3%	4%	4%	5%	4%
grade 6 events	7950	8369	9949	165583	28031
	1%	2%	2%	25%	5%
grade 7 events	342797	342000	354690	311344	394453
	82%	82%	81%	47%	73%

2.2 Compared Parameters

Parameter	Planned	Actual	Parameter	Planned	Actual
Instrument	ACIS	ACIS	Obspar format version number	6	6
Detector	ACIS-23678	ACIS-23678	Obspar file type	PREDICTED	ACTUAL
Grating	NONE	NONE	Obspar update status	NONE	UPDATED
Data mode	FAINT	FAINT	Number of optional ACIS chips dropped	0	0
Observation mode	POINTING	POINTING	On-chip summing requested	N	N
Pointing RA	5.998652	6.075162392072939	Subarray requested	NONE	NONE
Pointing Dec	-72.096484	-72.08273562110706	Alternating exposures requested	N	N
Pointing Roll	359.339654	359.5690839819448	Primary exposure time	0.000000	3.1
Window start time	149701144.184000	149701144.184000			
Window stop time	149857624.184000	149857624.184000			
SIM focus pos (mm)	-0.684267	-0.6828225247311905			
SIM defocus (mm)	0	0.001444936568705701			
SIM translation stage pos (mm)	-190.132523	-190.1400660498719			
SIM translation stage offset (mm)	0	0.00754346686406393			
Observation start time	149781078.184000	149779532.67243			
Observation start date	2002-09-30T13:50:14	2002-09-30T13:25:32			
Observation end time	149847078.184000	149847212.40023			
Observation end date	2002-10-01T08:10:14	2002-10-01T08:13:32			
Read mode	TIMED	TIMED			

2.3 Aspect



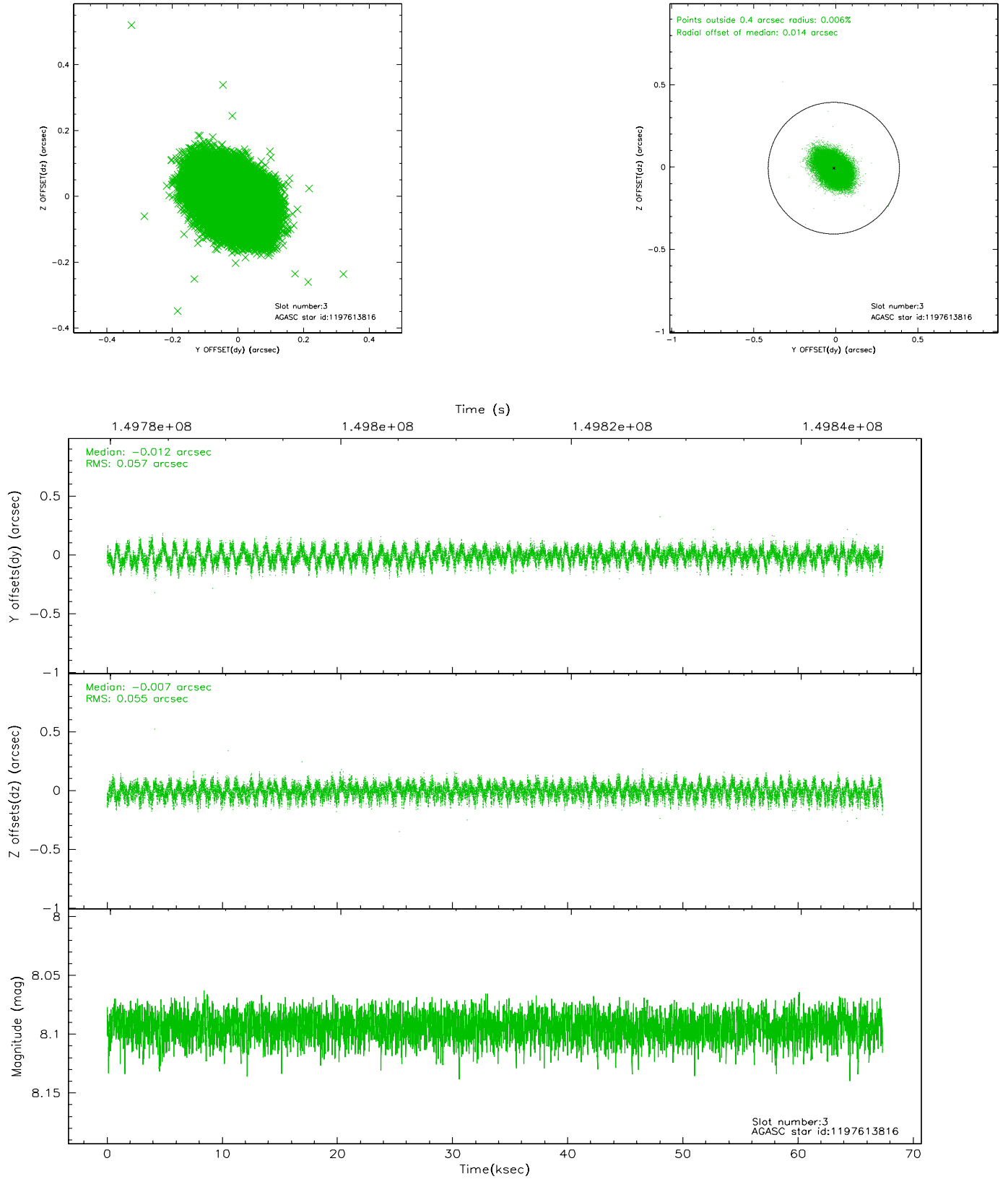


Slot Statistics

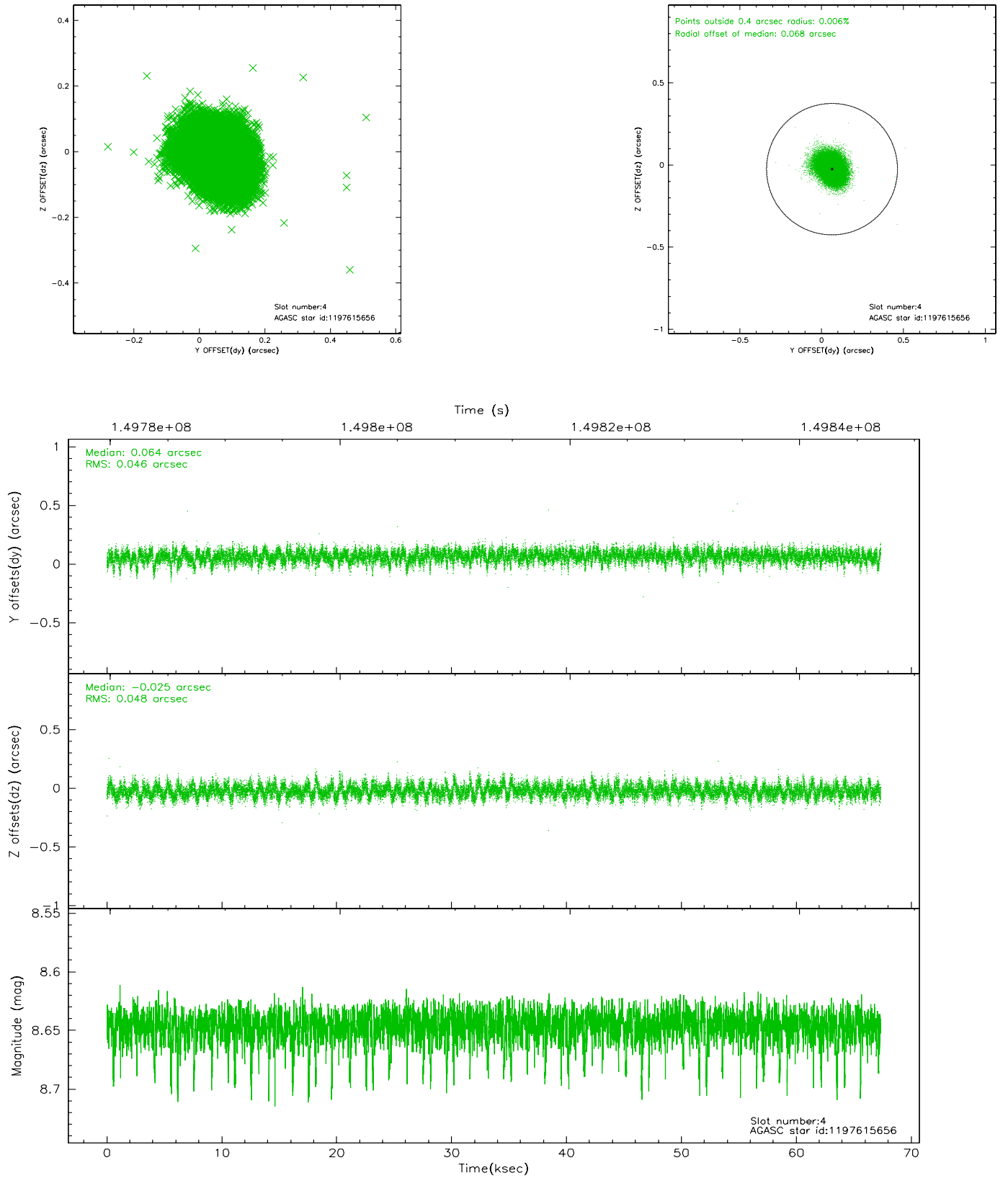
slot	status	id	mag	n_pts	med_dy	med_dz	dr1	dr2	ra	dec	mean_y	mean_z
0	FID	ACIS-S-2	7.11	16430	-0.003	0.024	0.007	0.012	0.000000	0.000000	-755.74	-1728.43
1	FID	ACIS-S-4	7.20	16430	-0.042	-0.005	0.006	0.010	0.000000	0.000000	2157.53	180.08
2	FID	ACIS-S-5	7.24	16430	0.014	-0.011	0.007	0.012	0.000000	0.000000	-1808.63	173.69
3	GUIDE	1197613816	8.09	32852	-0.012	-0.007	0.086	0.136	5.181461	-71.977993	-914.35	410.30
4	GUIDE	1197615656	8.65	32704	0.064	-0.025	0.070	0.117	6.909375	-71.882658	1011.20	774.03
5	GUIDE	1197999176	8.85	32842	-0.086	-0.058	0.091	0.142	6.259352	-72.617840	302.37	-1873.89
6	GUIDE	1197607928	9.61	32828	0.086	0.087	0.129	0.226	7.837743	-72.165759	2031.07	-256.66
7	GUIDE	1197619752	9.99	32359	-0.028	-0.005	0.186	0.290	4.510721	-71.856694	-1676.78	823.60

2.4 Star Slots

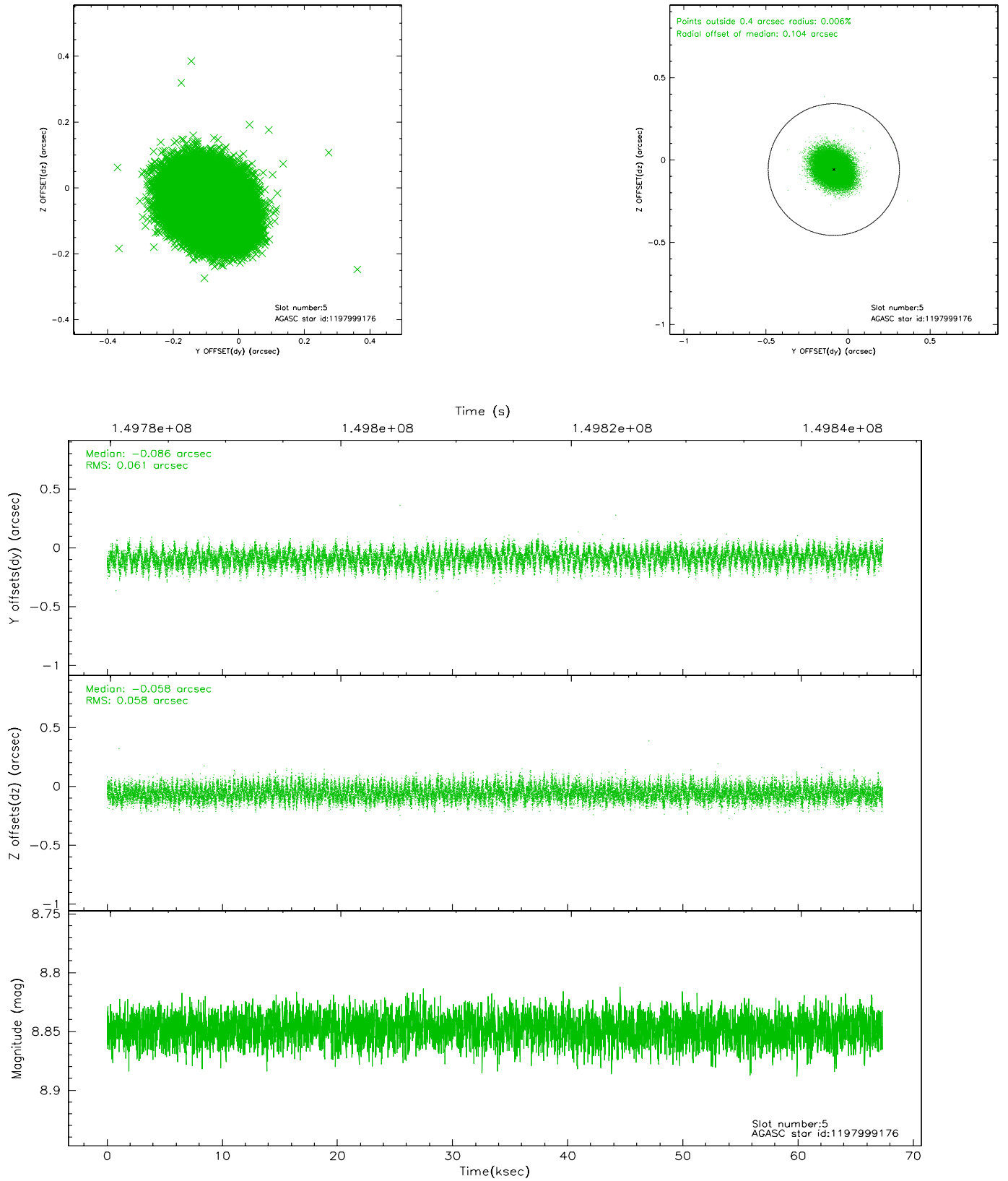
2.4.1 Slot 3



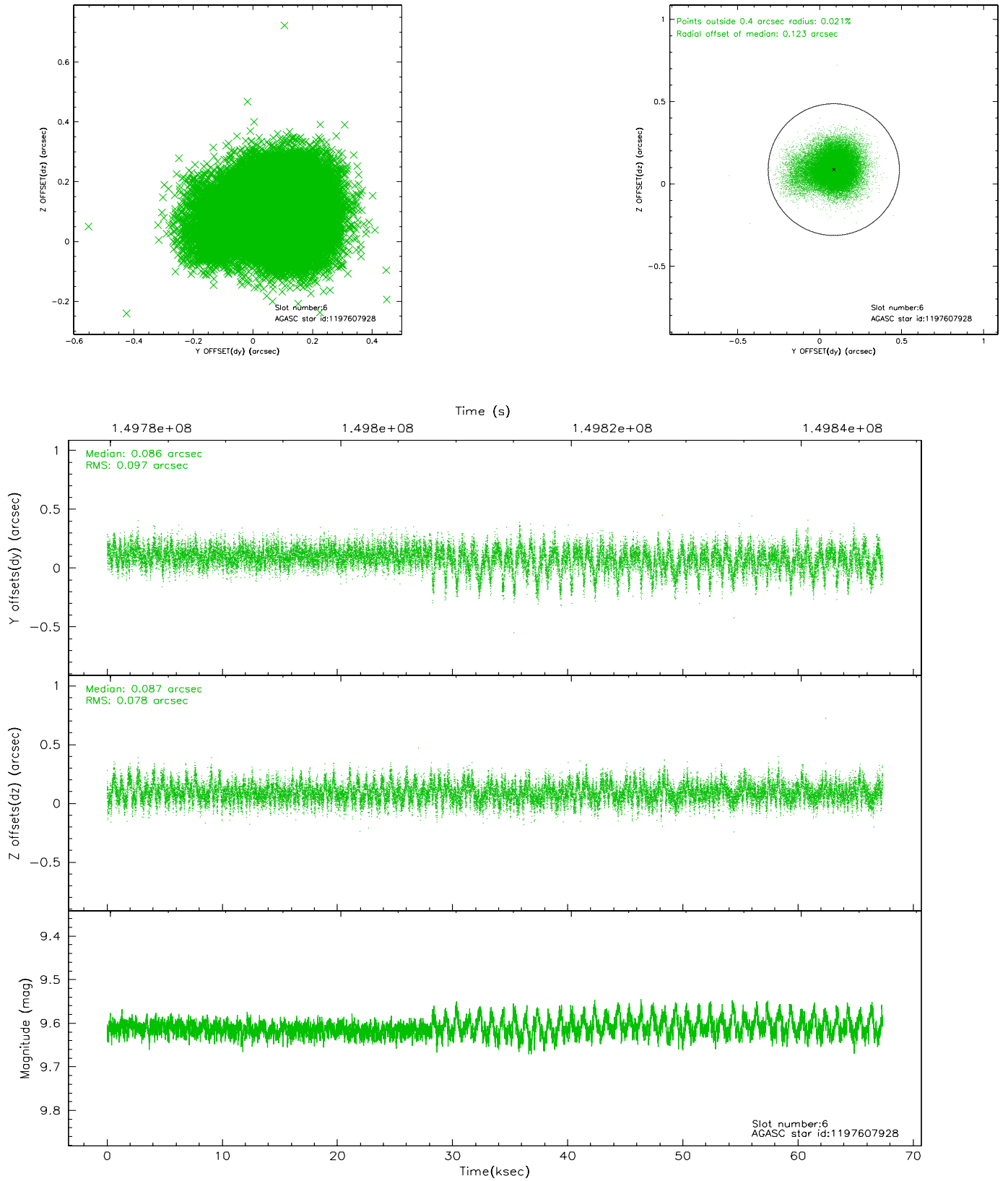
2.4.2 Slot 4



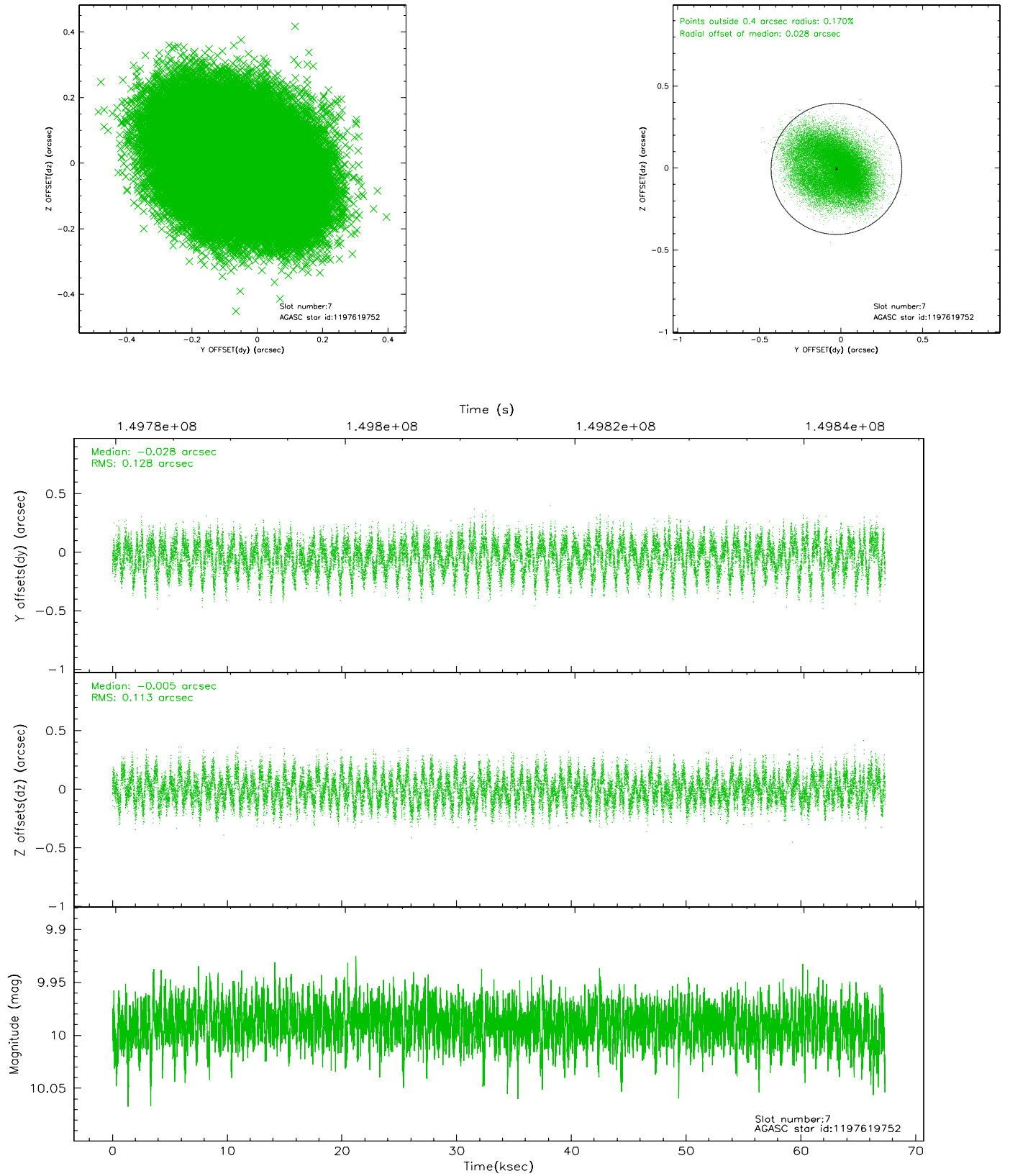
2.4.3 Slot 5



2.4.4 Slot 6

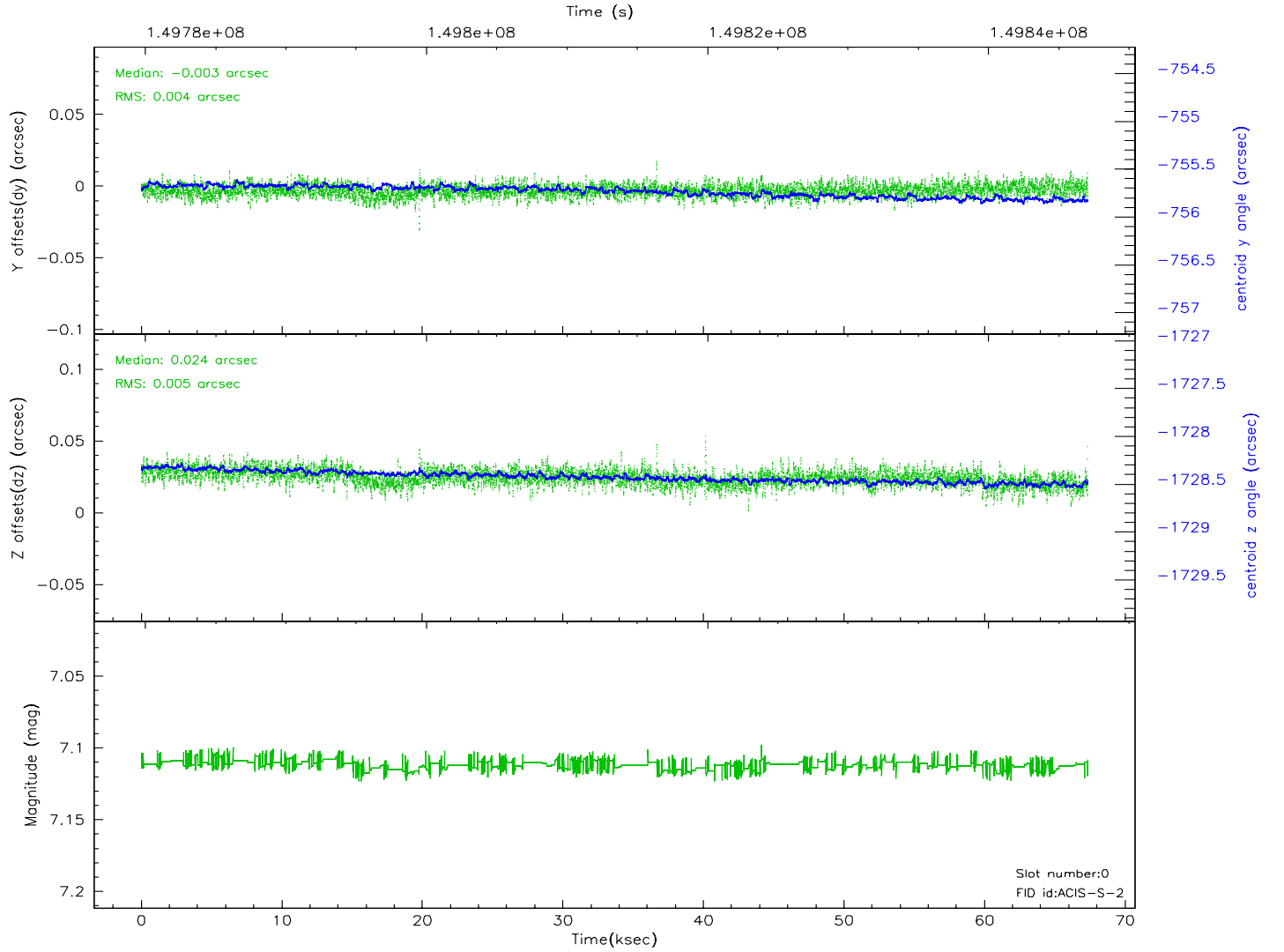
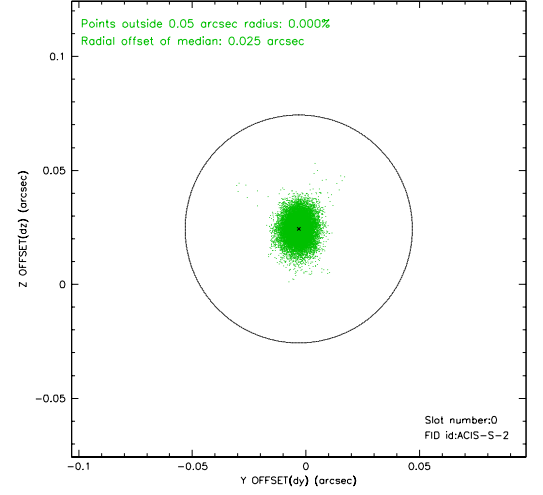
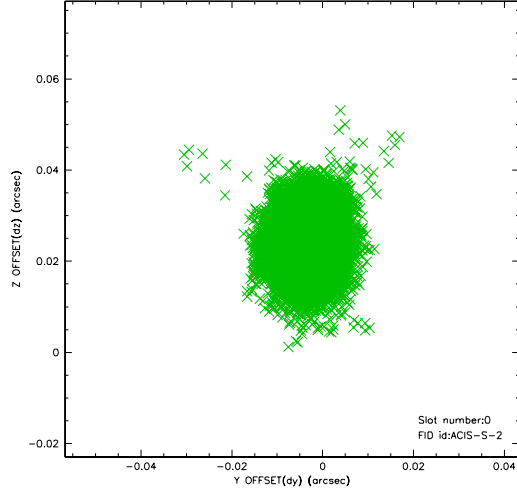


2.4.5 Slot 7

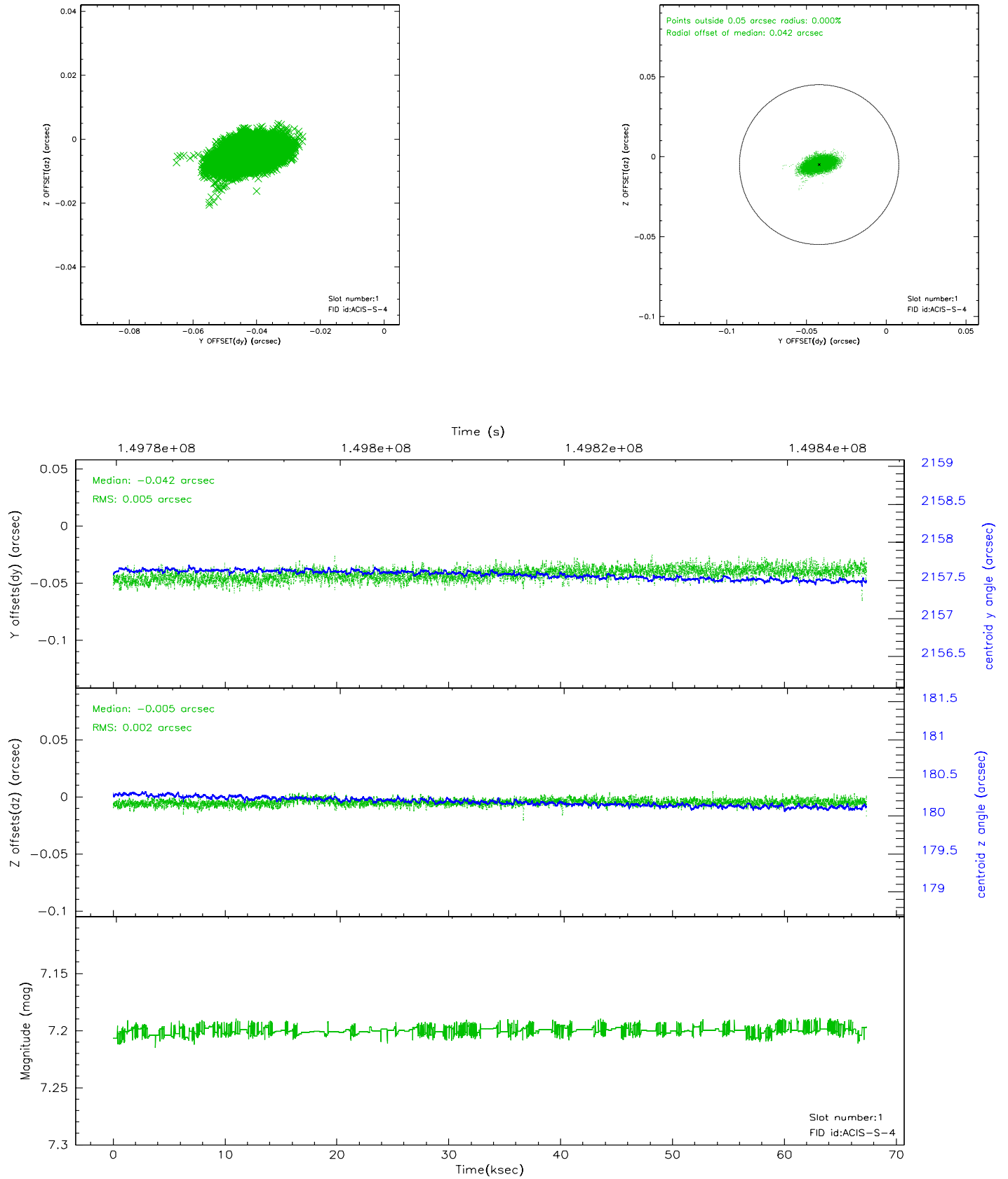


2.5 FID Slots

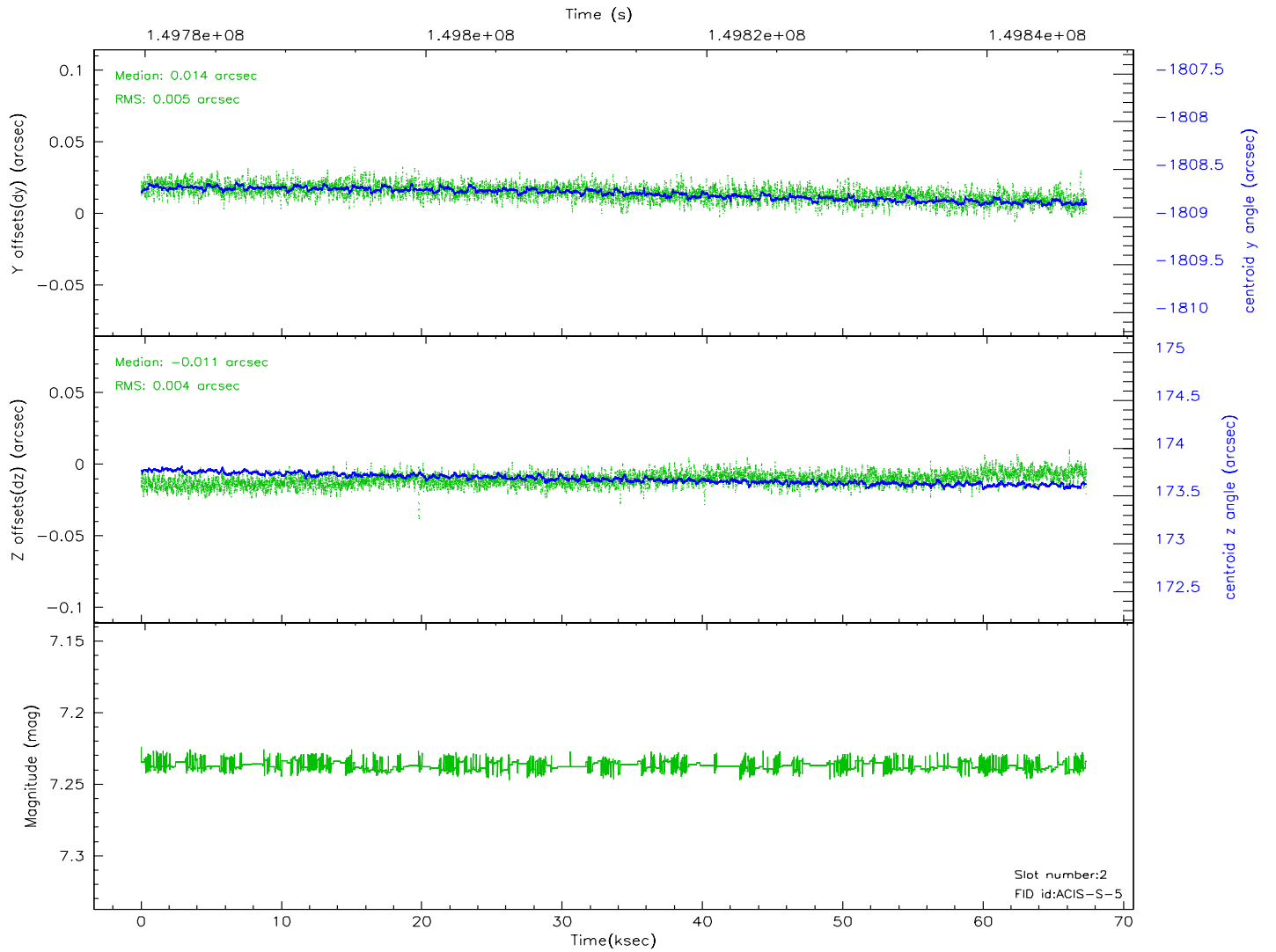
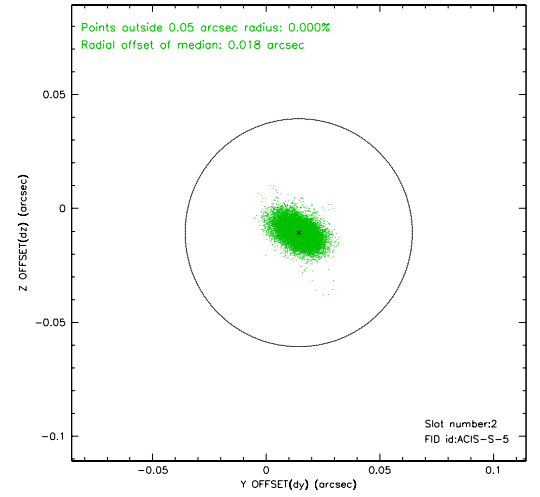
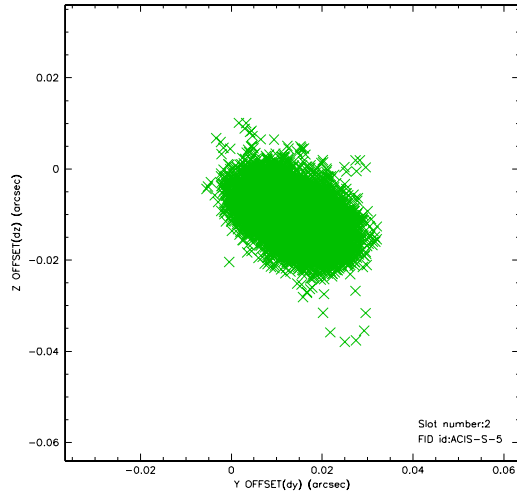
2.5.1 Slot 0



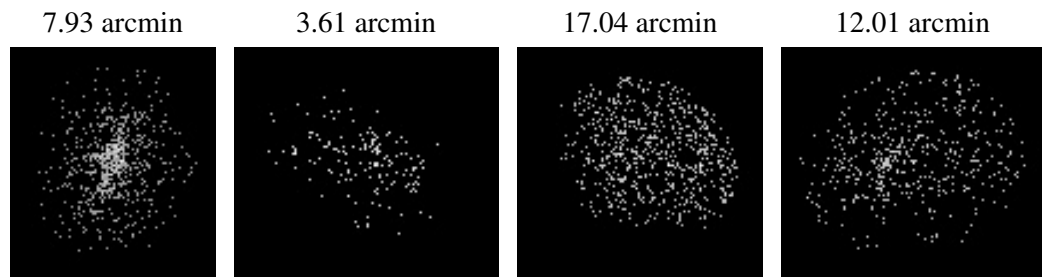
2.5.2 Slot 1



2.5.3 Slot 2



3 Point Sources



A Summary

A.1 Status

V&V Scientist	Jen Lauer
V&V Date (YYYY-MM-DD)	2006.10.06
V&V Edition	1
V&V Disposition and Status	OK
V&V Charge Time	66.107

A.2 Comments

Window constraint met.