

V&V Reference Report

L2 ASCDS Version : 7.6.9

Observation 2710 - L2 Version 001
Chandra X-Ray Center

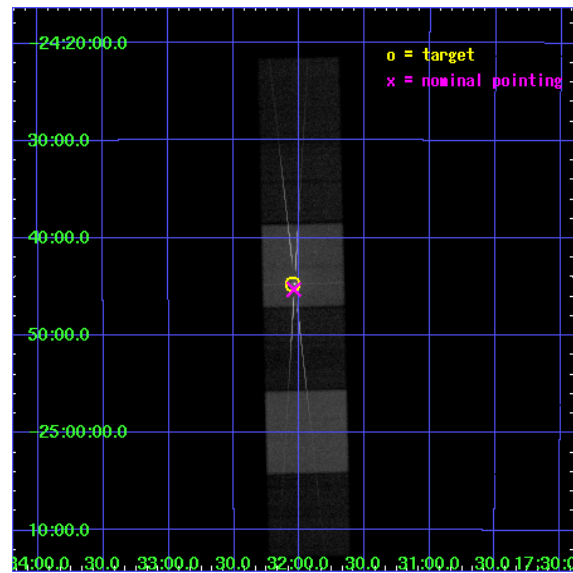
L2 Processing Date : Oct 6 2006

Contents

1	Front	2
2	OBI	3
2.1	OBI	3
2.1.1	Images	3
2.1.2	Bias	3
2.1.3	Parameters	4
2.1.4	Events	4
2.2	Compared Parameters	5
2.3	Aspect	6
2.4	Star Slots	9
2.4.1	Slot 3	9
2.4.2	Slot 4	10
2.4.3	Slot 5	11
2.4.4	Slot 6	12
2.4.5	Slot 7	13
2.5	FID Slots	14
2.5.1	Slot 0	14
2.5.2	Slot 1	15
2.5.3	Slot 2	16
3	Gratings	17
3.1	HEG Arm	17
3.2	MEG Arm	19
A	Summary	21
A.1	Status	21
A.2	Comments	21

1 Front

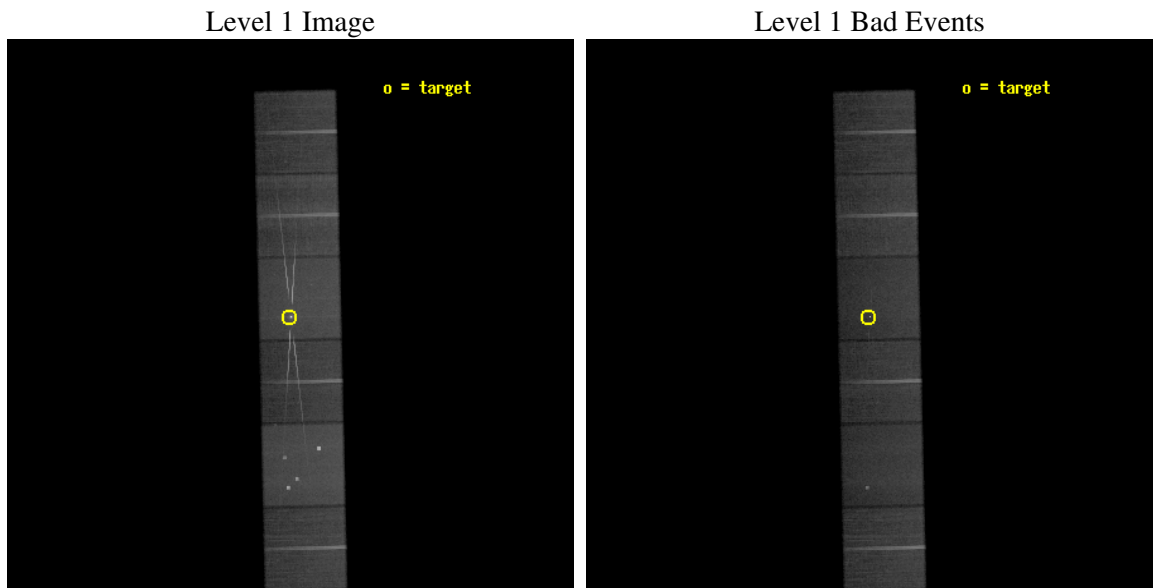
seq_num	400190
obs_id	2710
title	OUTFLOWS FROM X-RAY PULSARS IN THE PROPELLER STATE
observer	Dr. Wei Cui
object	GX 1+4
dtcycle	0
cycle	P
ra_targ	263.0125
dec_targ	-24.745639
ra_nom	263.01038570019
dec_nom	-24.755124594494
roll_nom	268.66912200856
revision	2
ontime	57369.599786282
livetime	56643.151369962
ontime4	57369.599786282
ontime5	57369.599786282
ontime6	57369.599786282
ontime7	57369.599786282
ontime8	57369.599786282
ontime9	57369.599786282
l2events	613964



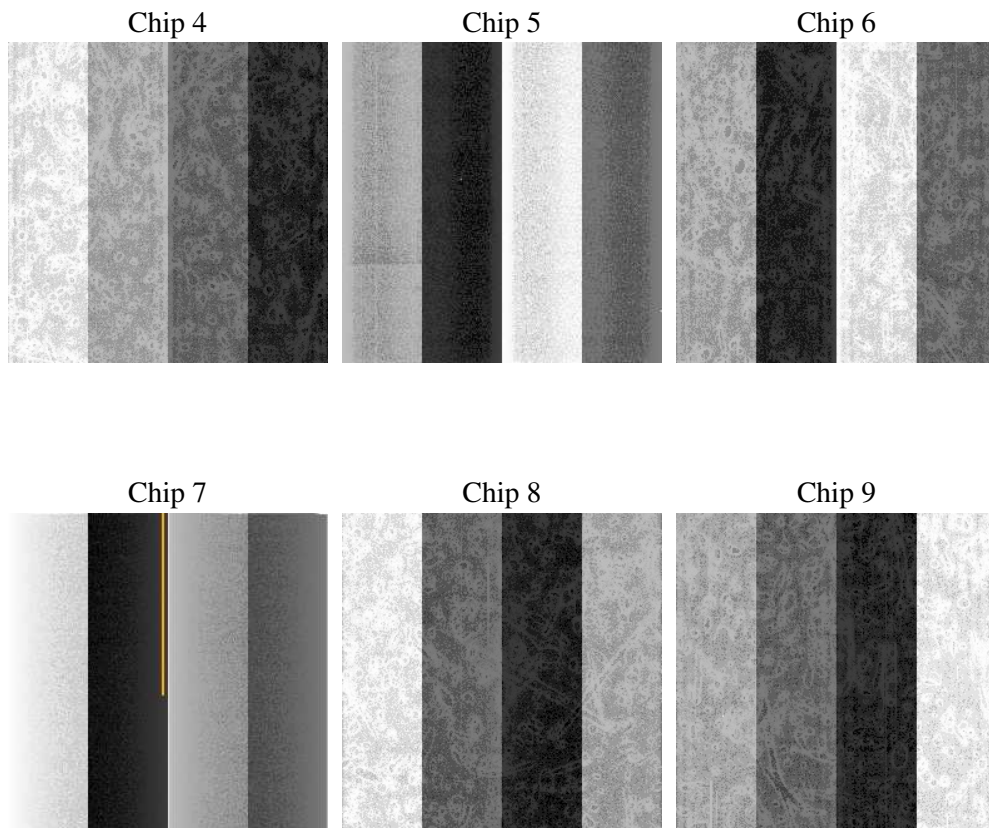
2 OBI

2.1 OBI

2.1.1 Images



2.1.2 Bias



2.1.3 Parameters

obi_num	0
ascdsver	7.6.9
caldsver	3.2.3
date	2006-09-30T09:16:35
revision	2

sched_exp_time	57500.000000
ontime	57375.510911465
ontime4	57375.510911465
ontime5	57375.510911465
ontime6	57375.510911465
ontime7	57375.510911465
ontime8	57375.510911465
ontime9	57375.510911465
l1events	2537208

2.1.4 Events

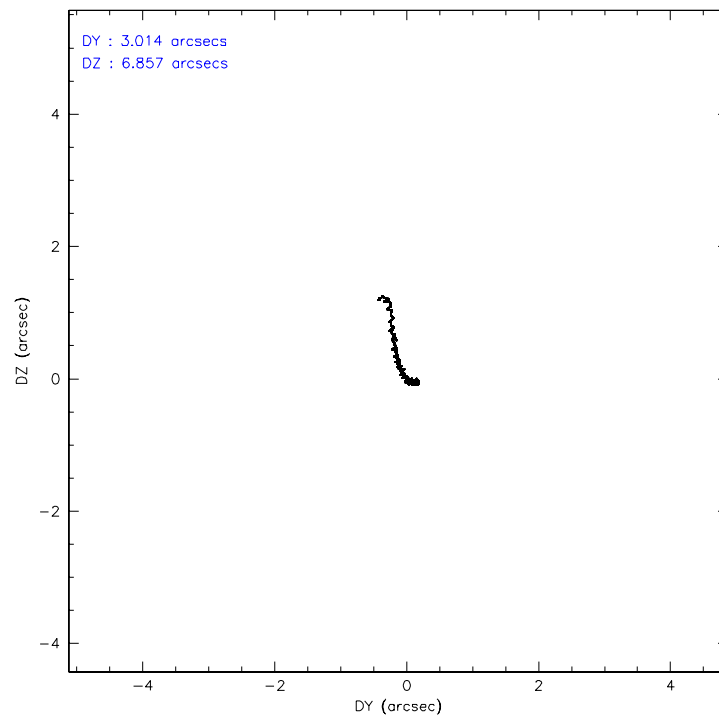
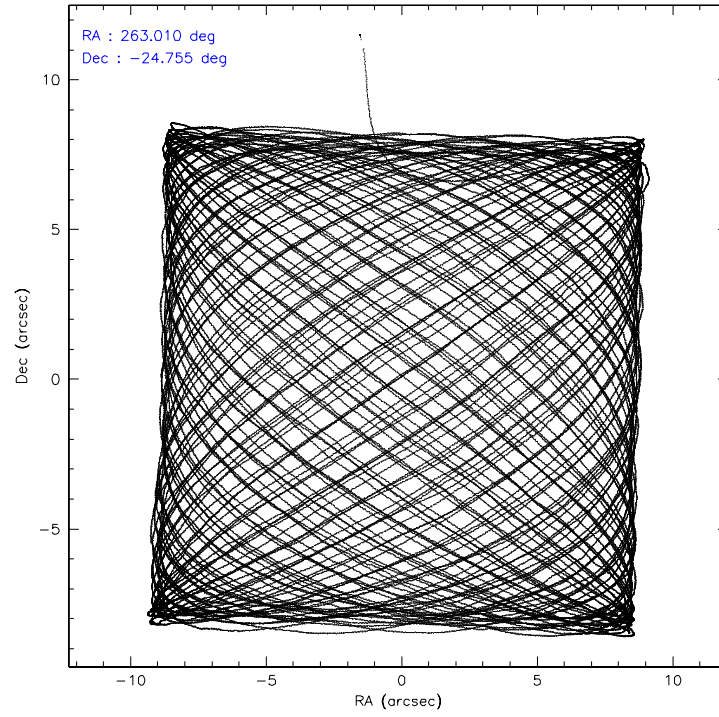
	ccd 4	ccd 5	ccd 6	ccd 7	ccd 8	ccd 9
level 1 events	371073	510582	370855	515568	432972	336158
rejected events	328539	274615	299537	282454	338368	293940
rejected %	88%	53%	80%	54%	78%	87%

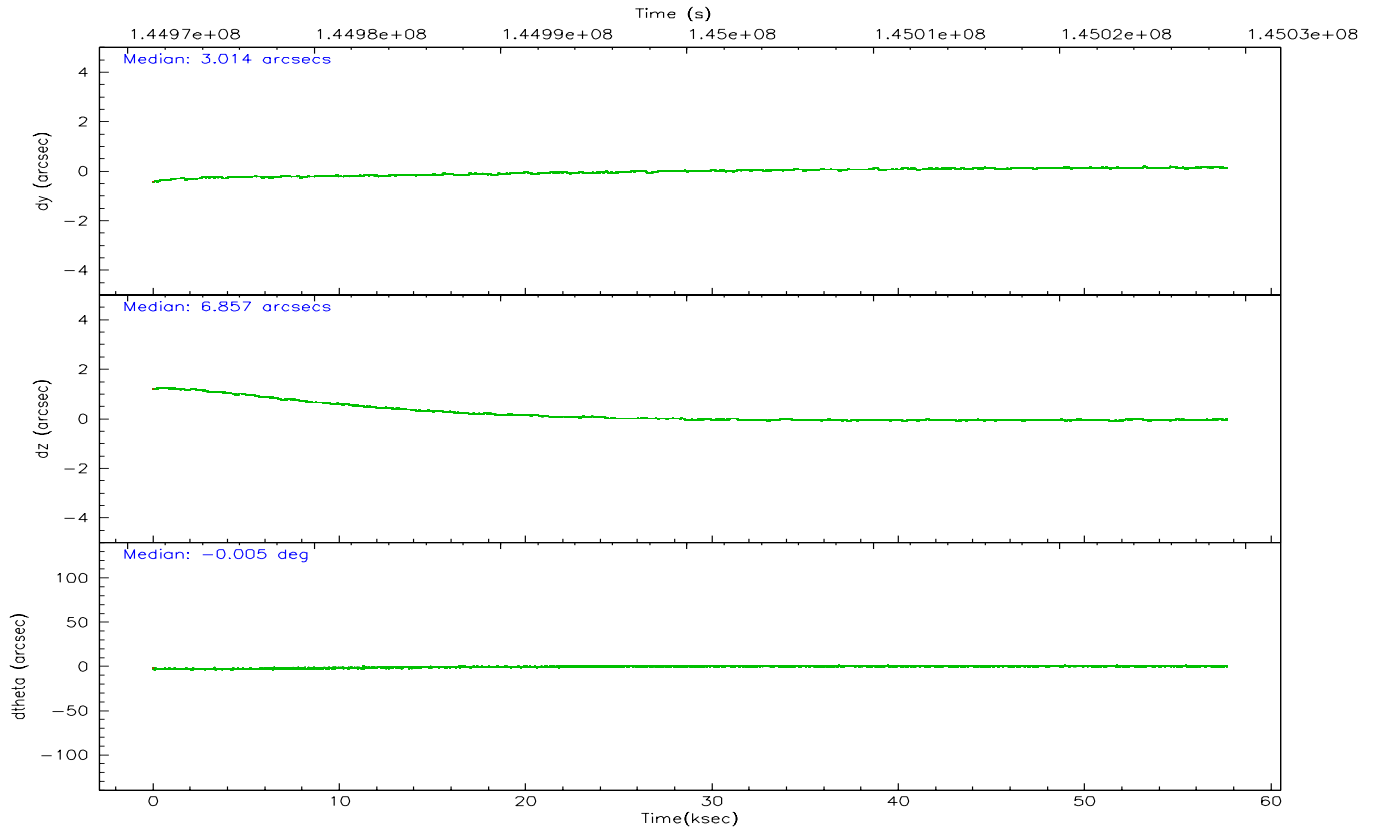
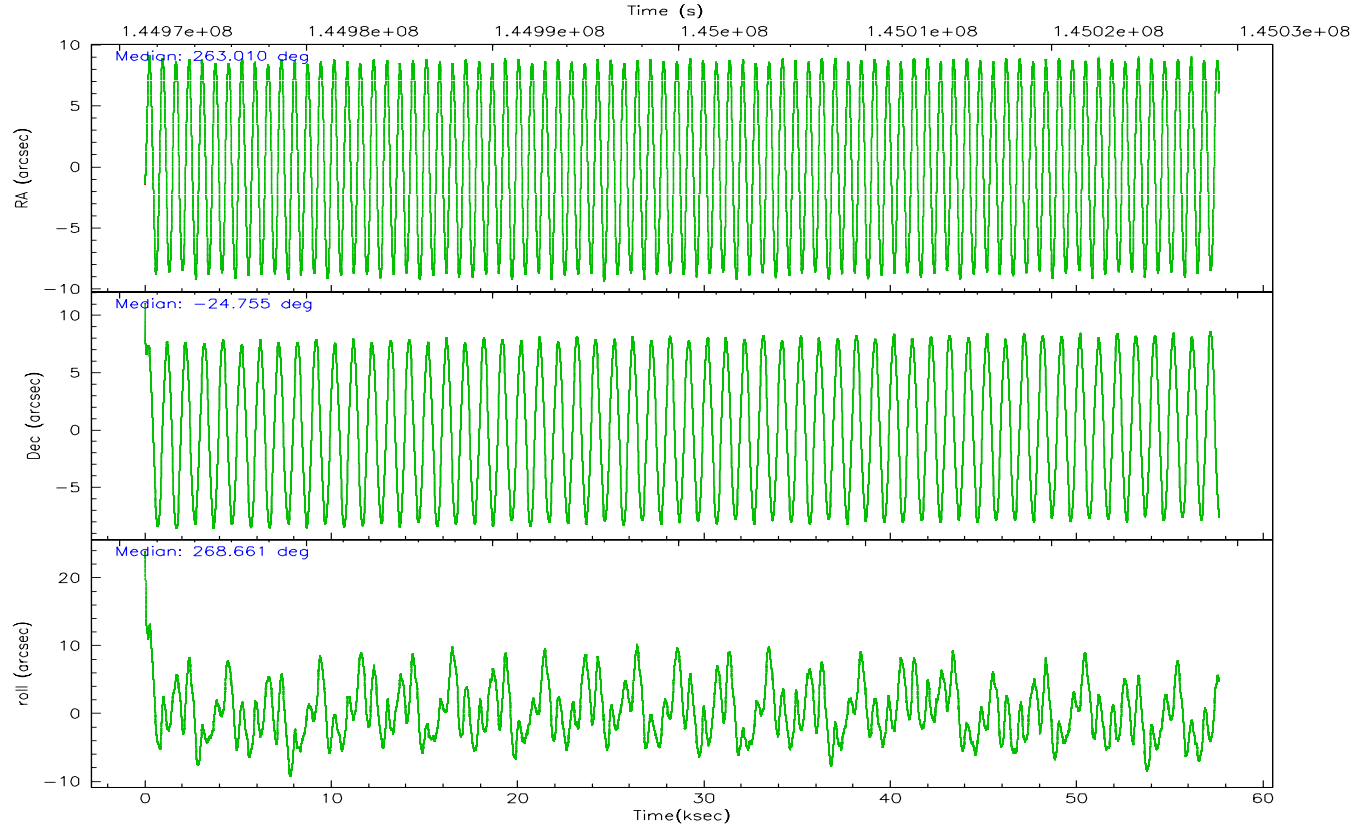
	ccd 4	ccd 5	ccd 6	ccd 7	ccd 8	ccd 9
grade 0 events	18870	31917	38267	20505	34105	18179
	5%	6%	10%	3%	7%	5%
grade 1 events	345	493	282	595	299	165
	0%	0%	0%	0%	0%	0%
grade 2 events	8643	71569	12268	58526	19348	7922
	2%	14%	3%	11%	4%	2%
grade 3 events	4333	4952	5266	14665	9696	4174
	1%	0%	1%	2%	2%	1%
grade 4 events	4173	4687	5416	14234	8981	4076
	1%	0%	1%	2%	2%	1%
grade 5 events	14020	24319	15311	32088	19487	15994
	3%	4%	4%	6%	4%	4%
grade 6 events	6516	122862	10112	125216	22490	7869
	1%	24%	2%	24%	5%	2%
grade 7 events	314173	249783	283933	249739	318566	277779
	84%	48%	76%	48%	73%	82%

2.2 Compared Parameters

Parameter	Planned	Actual	Parameter	Planned	Actual
Instrument	ACIS	ACIS	Obspar format version number	6	6
Detector	ACIS-456789	ACIS-456789	Obspar file type	PREDICTED	ACTUAL
Grating	HETG	HETG	Obspar update status	NONE	UPDATED
Data mode	FAINT	FAINT	Number of optional ACIS chips dropped	0	0
Observation mode	POINTING	POINTING	On-chip summing requested	N	N
Pointing RA	262.995654	263.0103857001878	Subarray requested	NONE	NONE
Pointing Dec	-24.731410	-24.75512459449394	Alternating exposures requested	N	N
Pointing Roll	268.506326	268.6691220085643	Primary exposure time	0.000000	3.2
SIM focus pos (mm)	-0.684267	-0.6828225247311905			
SIM defocus (mm)	0	0.001444936568705701			
SIM translation stage pos (mm)	-187.132523	-187.1254020033014			
SIM translation stage offset (mm)	-3	-3.007120579706367			
Observation start time	144971497.184000	144970450.2864			
Observation start date	2002-08-05T21:50:33	2002-08-05T21:34:10			
Observation end time	145028997.184000	145029524.62633			
Observation end date	2002-08-06T13:48:53	2002-08-06T13:58:44			
Read mode	TIMED	TIMED			

2.3 Aspect



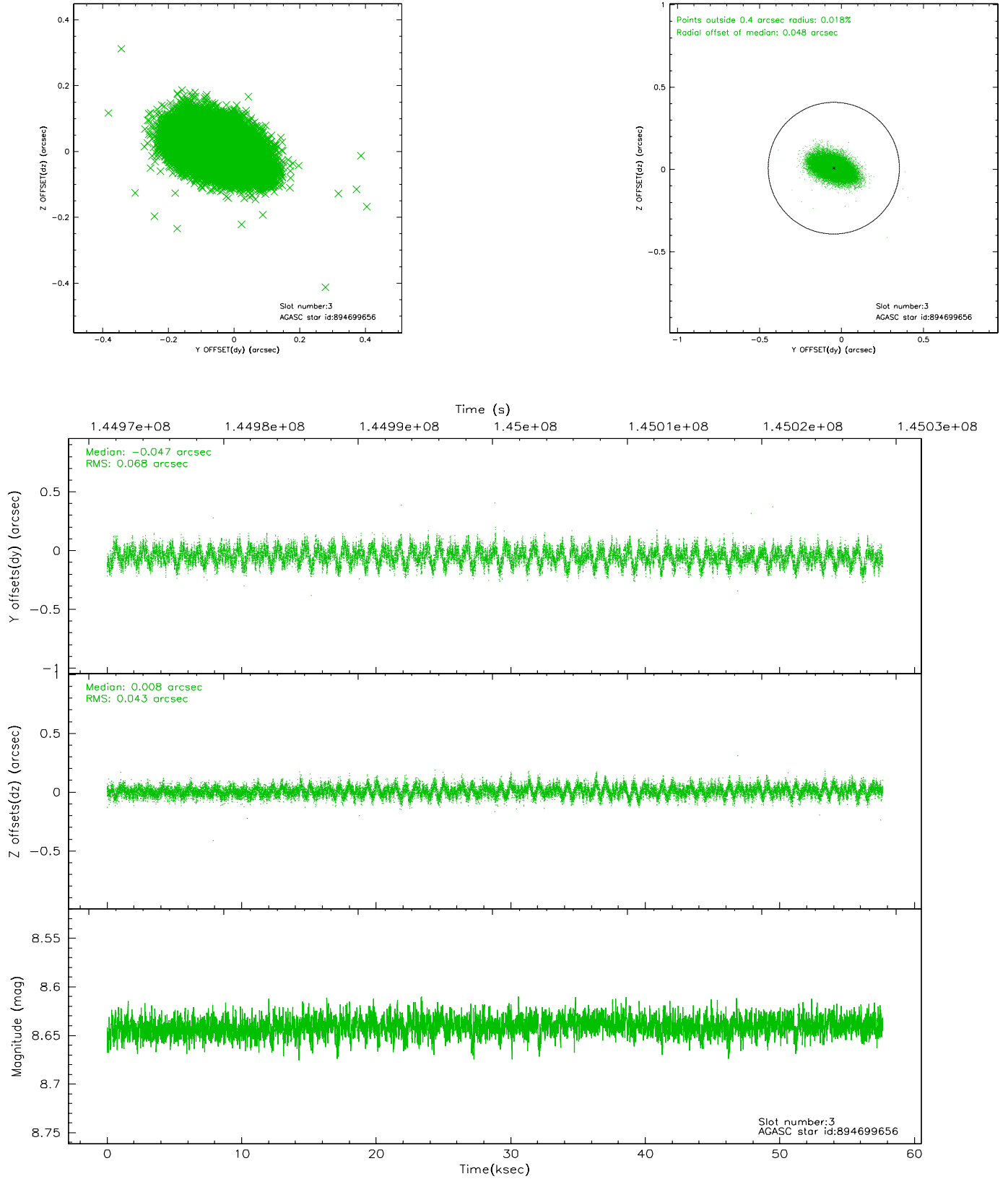


Slot Statistics

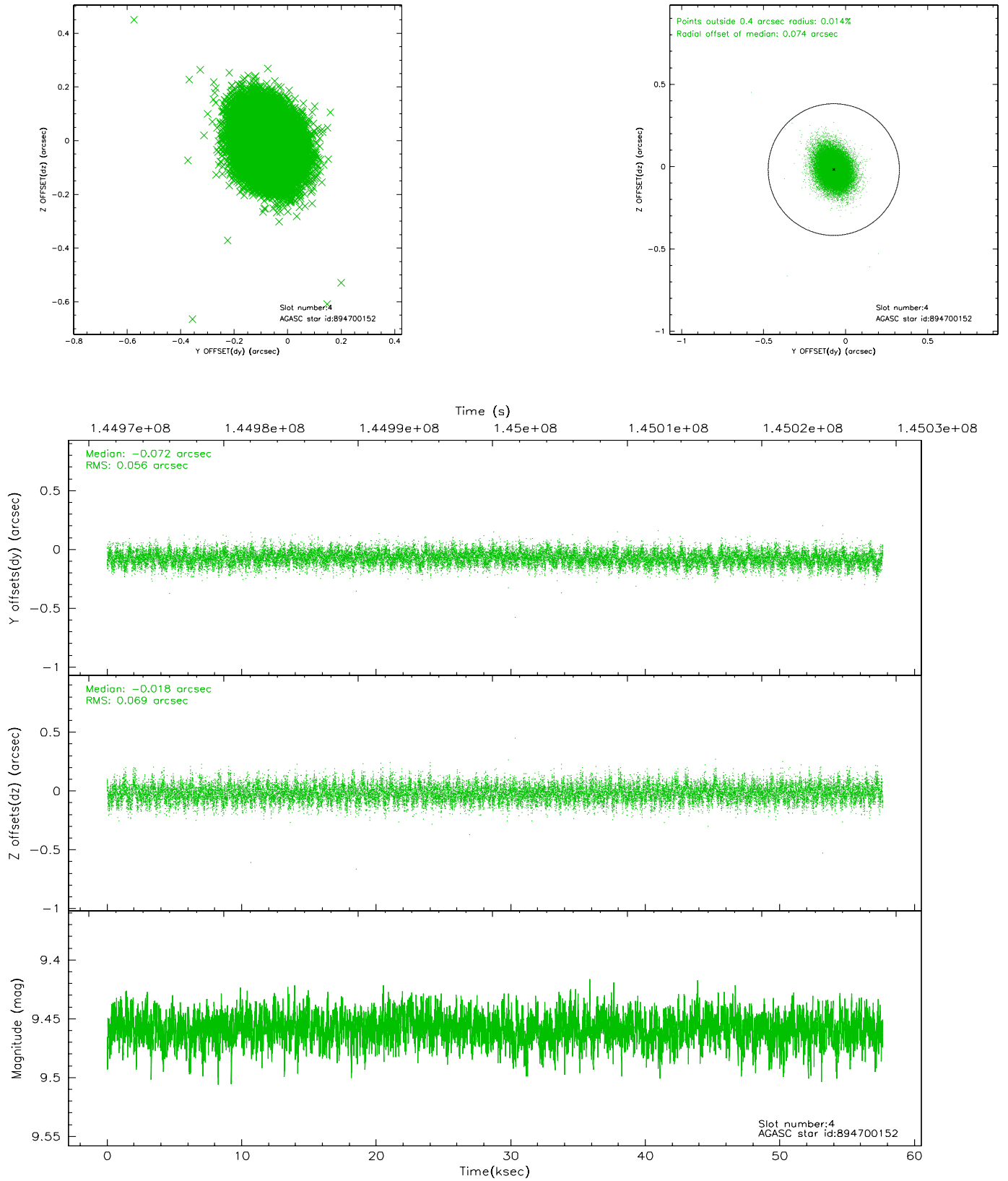
slot	status	id	mag	n_pts	med_dy	med_dz	dr1	dr2	ra	dec	mean_y	mean_z
0	FID	ACIS-S-2	7.10	14059	-0.032	-0.027	0.012	0.032	0.000000	0.000000	-755.43	-1790.35
1	FID	ACIS-S-4	7.20	14059	-0.026	0.022	0.008	0.014	0.000000	0.000000	2157.85	118.24
2	FID	ACIS-S-5	7.24	14060	0.026	0.014	0.014	0.036	0.000000	0.000000	-1808.28	111.81
3	GUIDE	894699656	8.64	28114	-0.047	0.008	0.084	0.143	263.251476	-24.323201	-1489.32	801.25
4	GUIDE	894700152	9.46	28104	-0.072	-0.018	0.094	0.154	263.301771	-24.142954	-2142.40	950.70
5	GUIDE	895223264	9.65	28023	0.208	0.095	0.112	0.185	263.266819	-25.047627	1116.61	914.98
6	GUIDE	895222696	9.20	28082	-0.059	0.033	0.101	0.168	262.234902	-24.748873	135.64	-2483.56
7	GUIDE	894699328	8.47	28118	-0.022	-0.122	0.088	0.133	262.250837	-24.336467	-1350.06	-2478.76

2.4 Star Slots

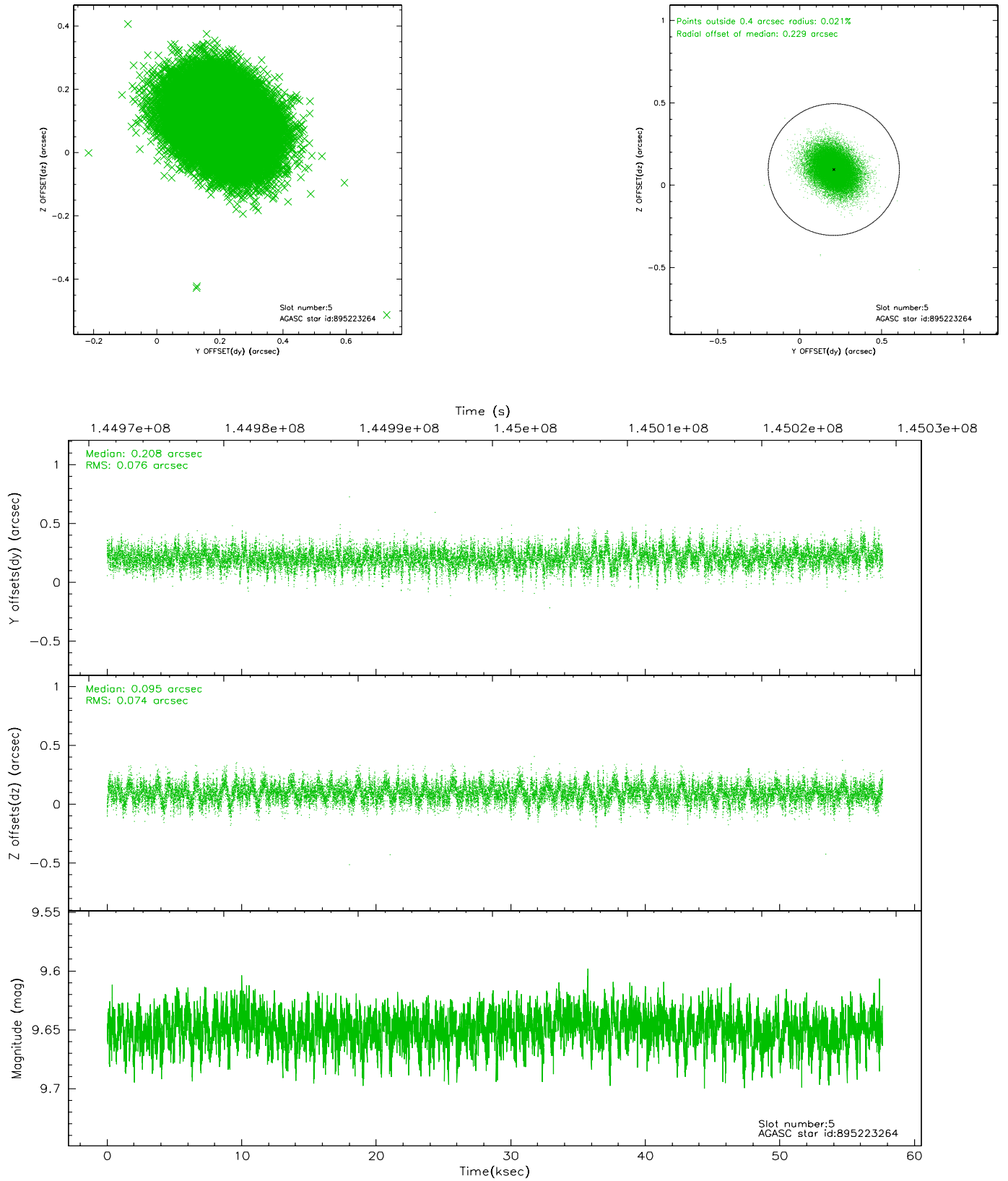
2.4.1 Slot 3



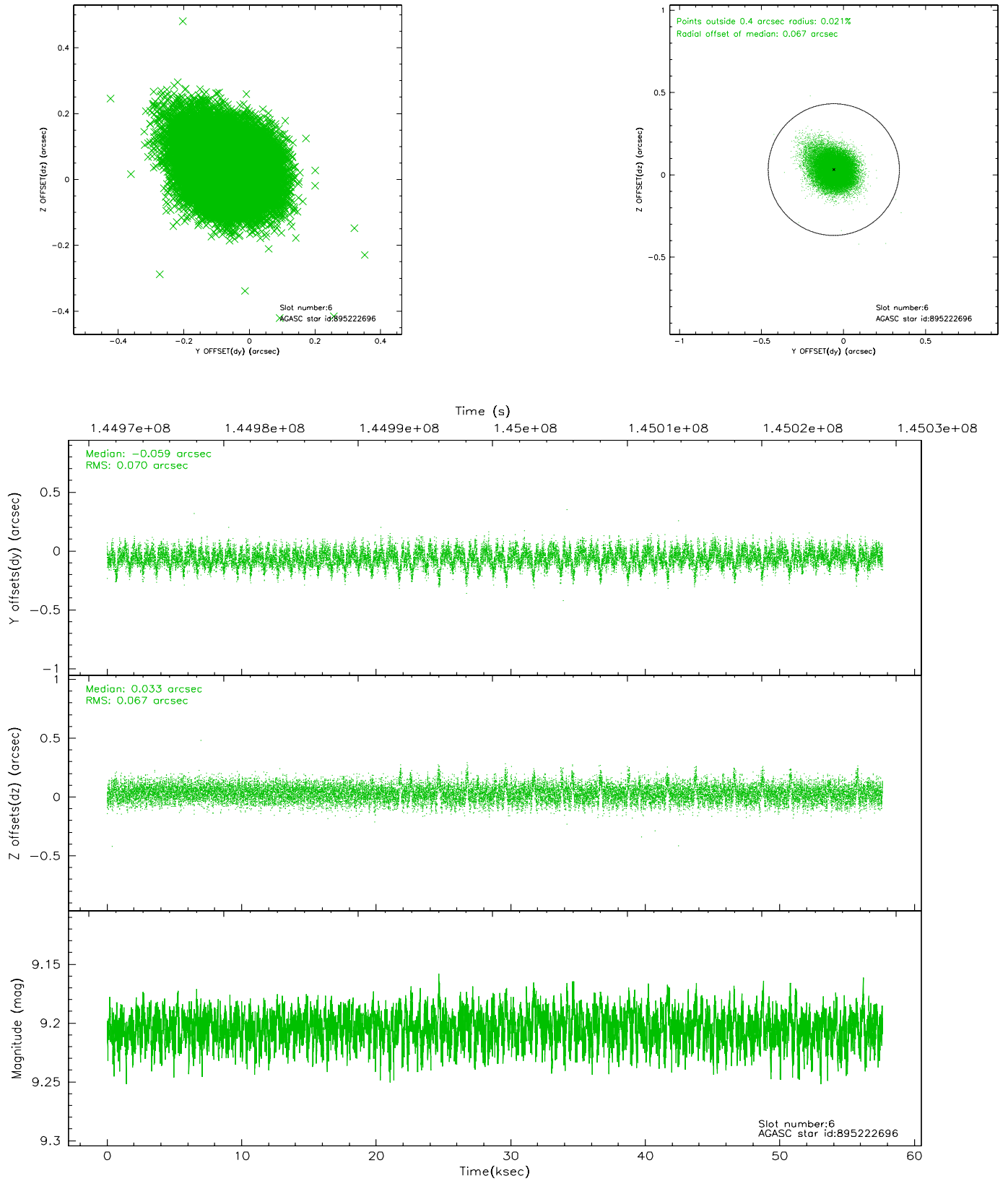
2.4.2 Slot 4



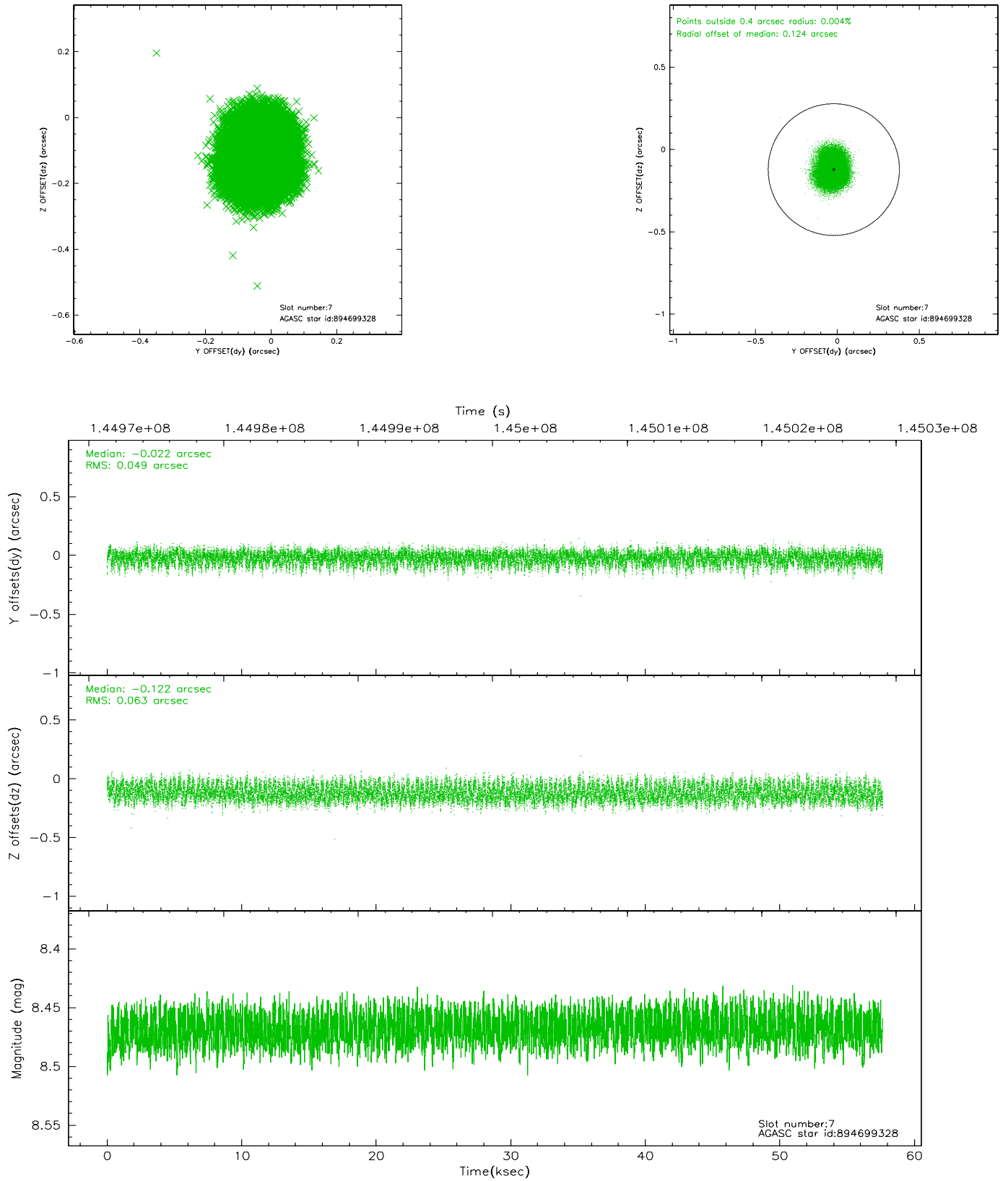
2.4.3 Slot 5



2.4.4 Slot 6

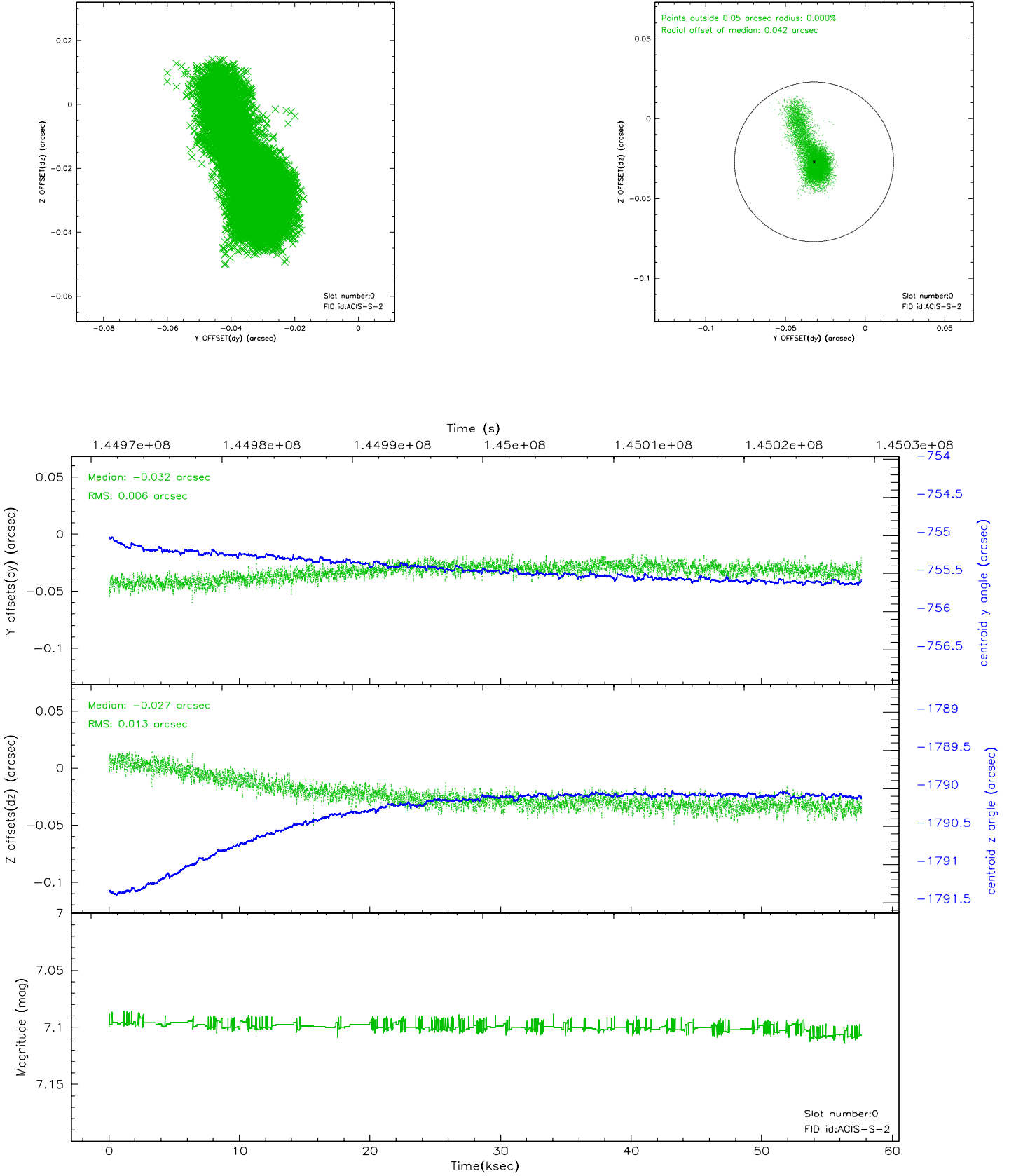


2.4.5 Slot 7

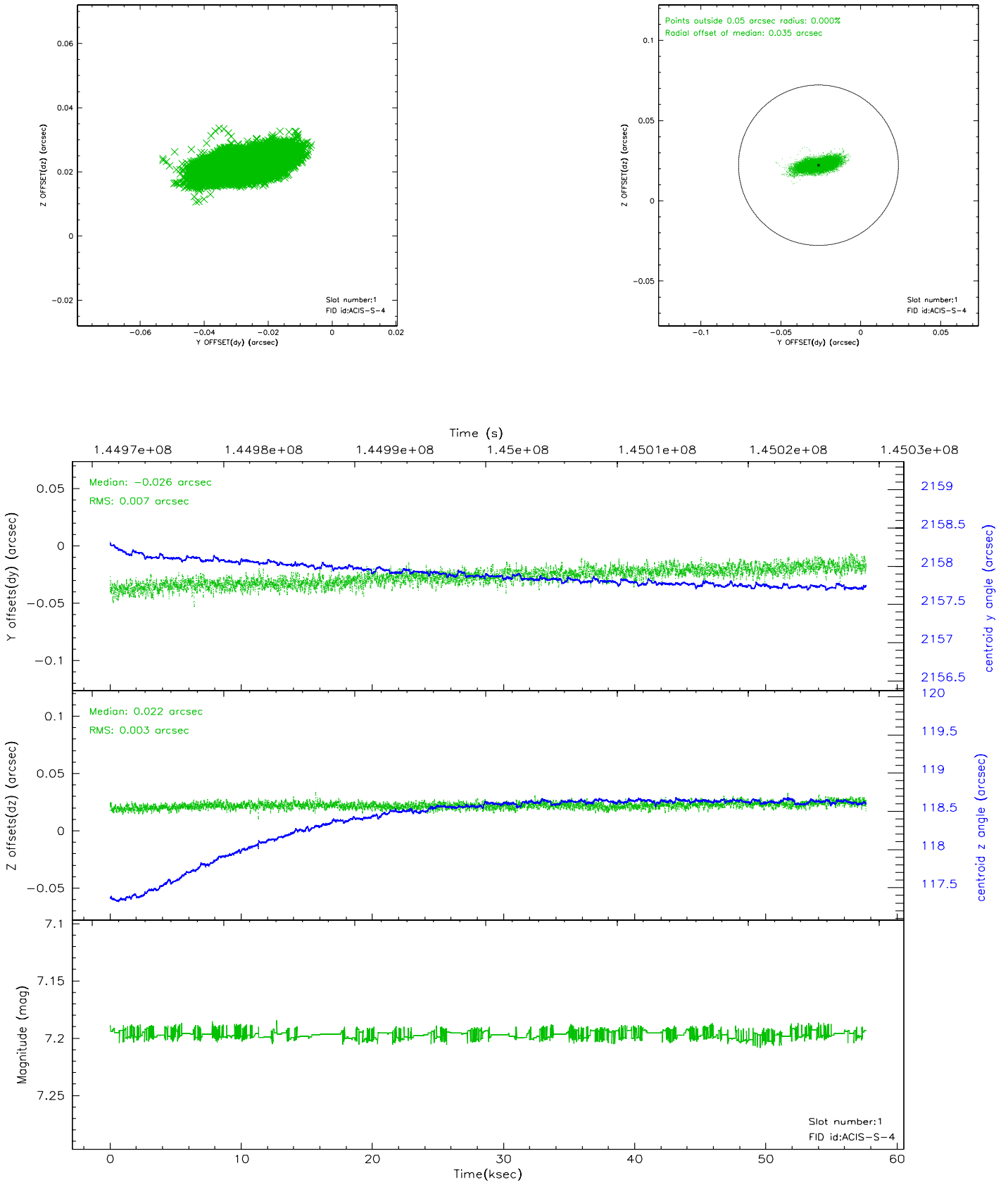


2.5 FID Slots

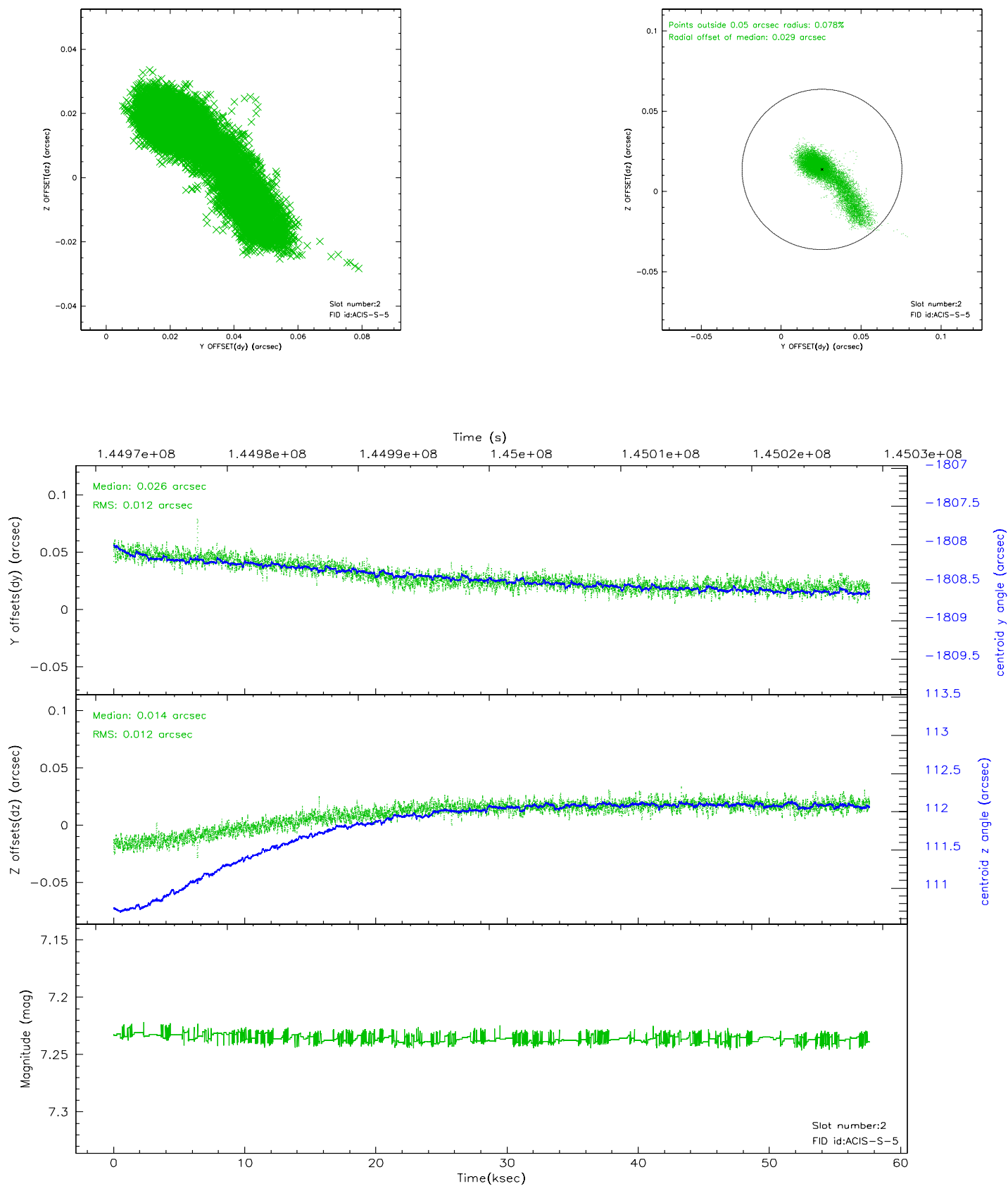
2.5.1 Slot 0



2.5.2 Slot 1

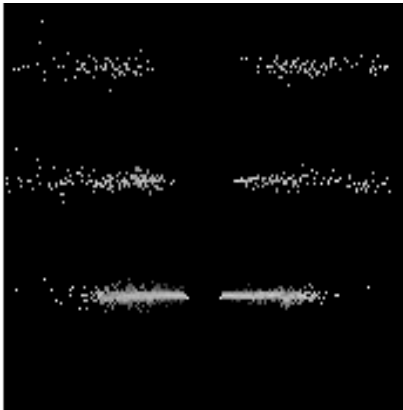


2.5.3 Slot 2

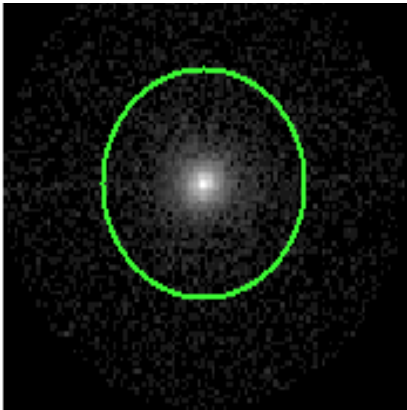


3 Gratings

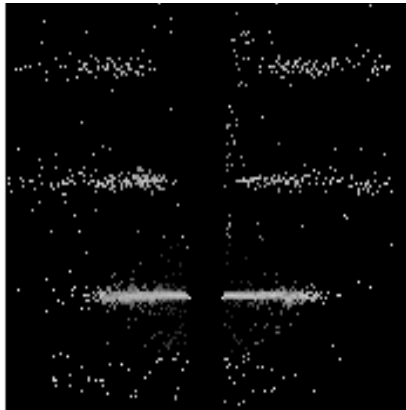
3.1 HEG Arm



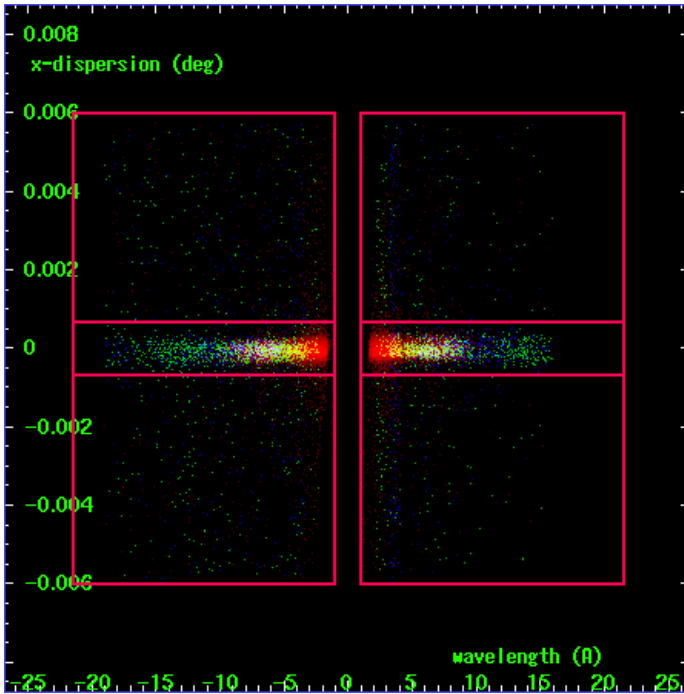
HEG Order Sort 123



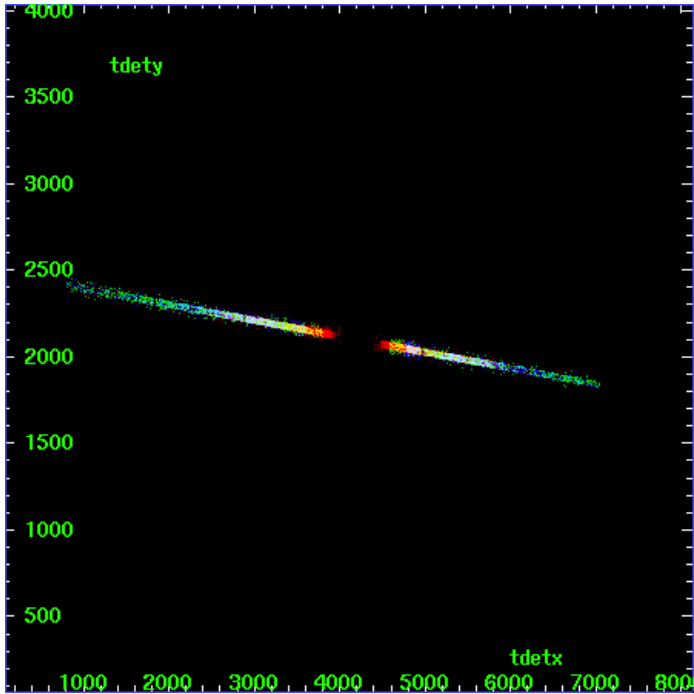
HEG Zero Order



HEG Order Sort ALL

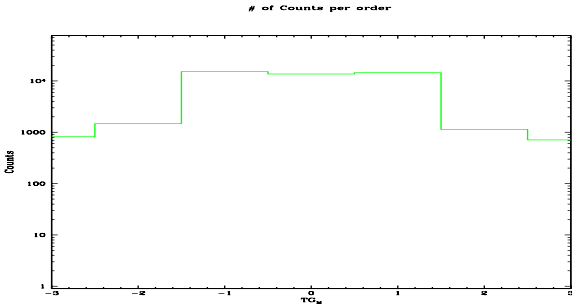


Spot Image HEG

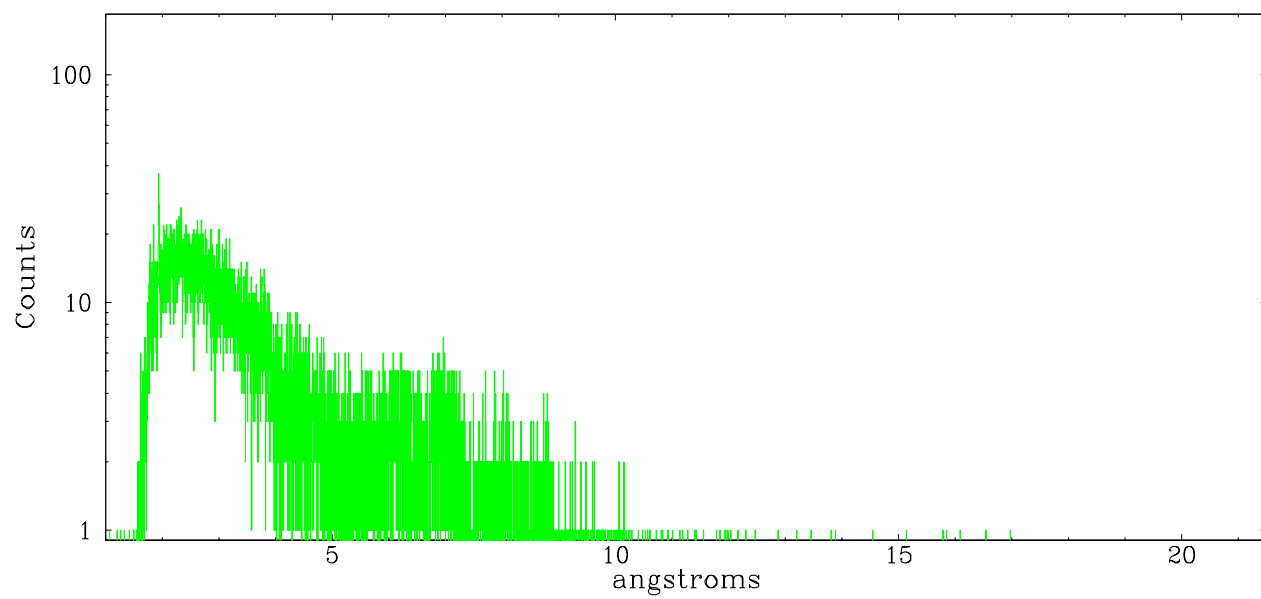


Full Detector HEG

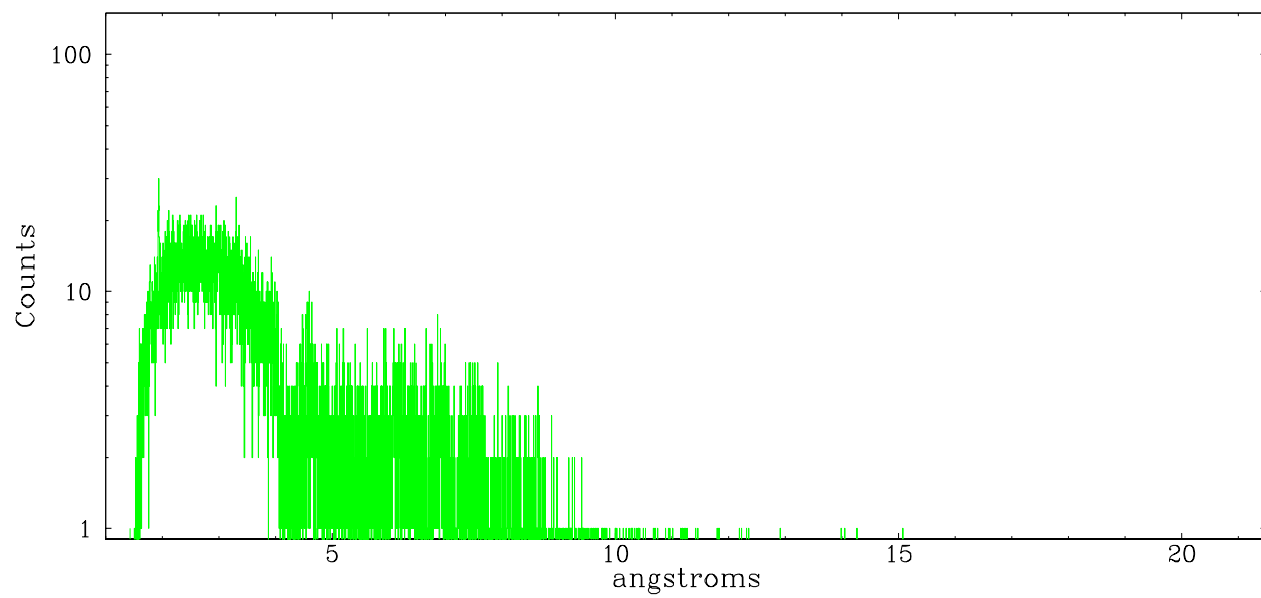
	order -3	order -2	order -1	order 0	order 1	order 2	order 3
Events	819	1473	15266	13655	14476	11136	712



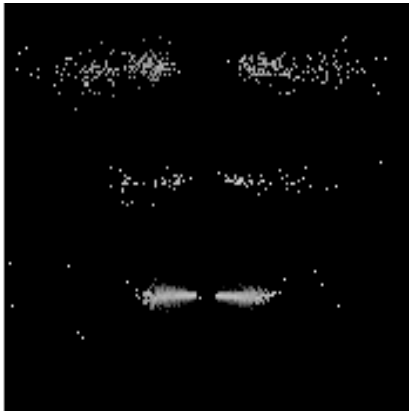
heg order -1



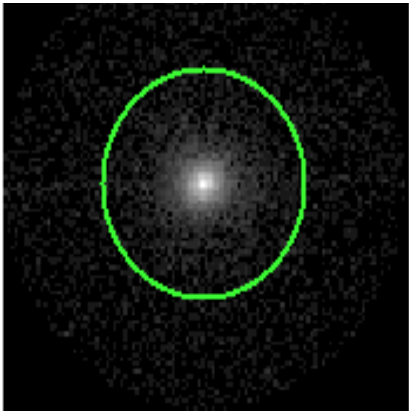
heg order +1



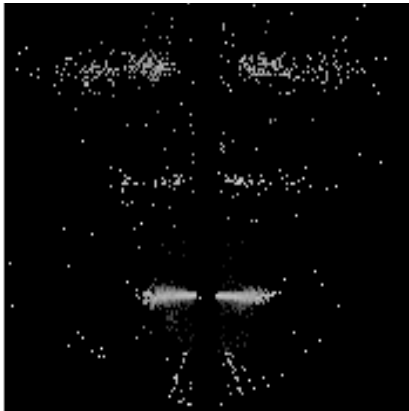
3.2 MEG Arm



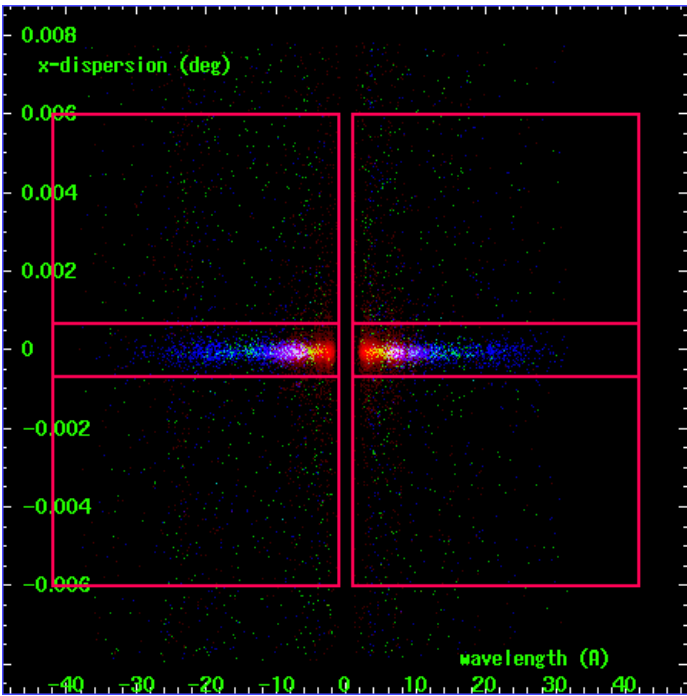
MEG Order Sort 123



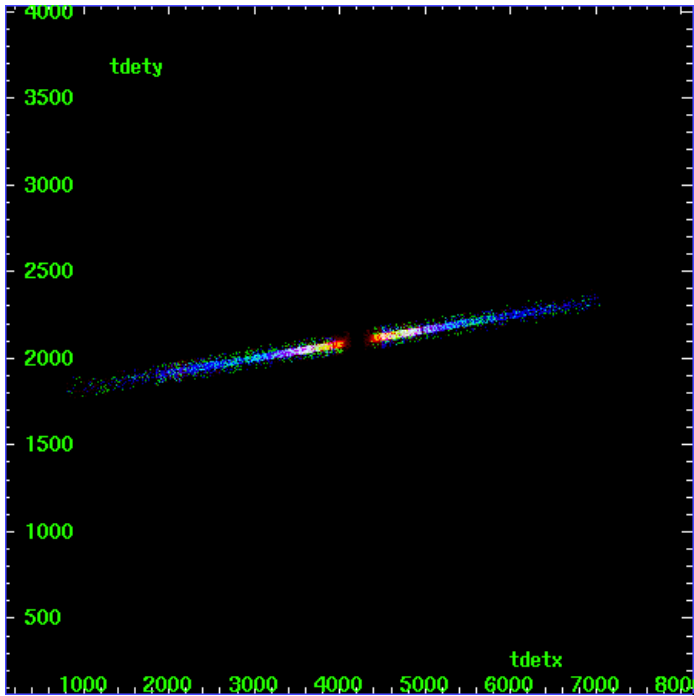
MEG Zero Order



MEG Order Sort ALL

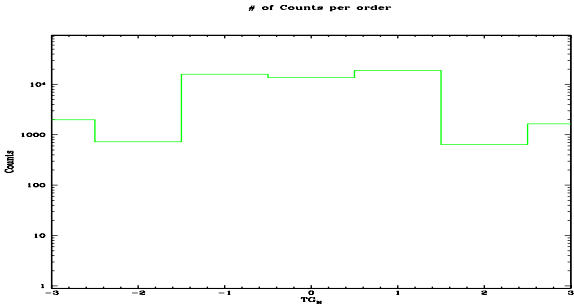


Spot Image MEG

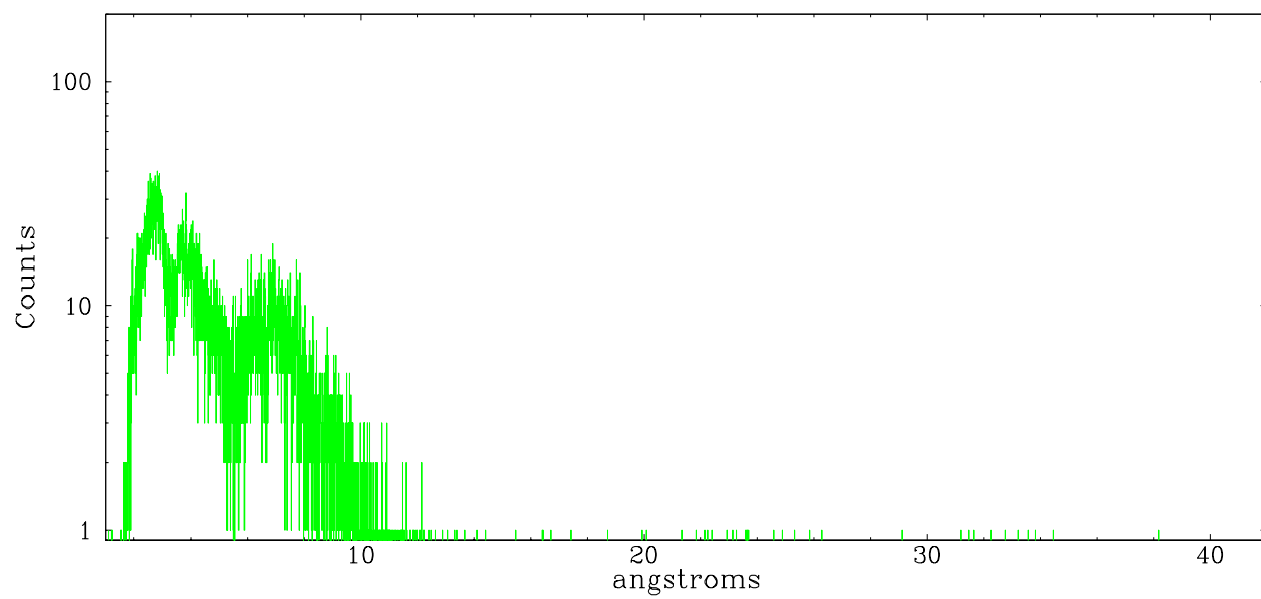


Full Detector MEG

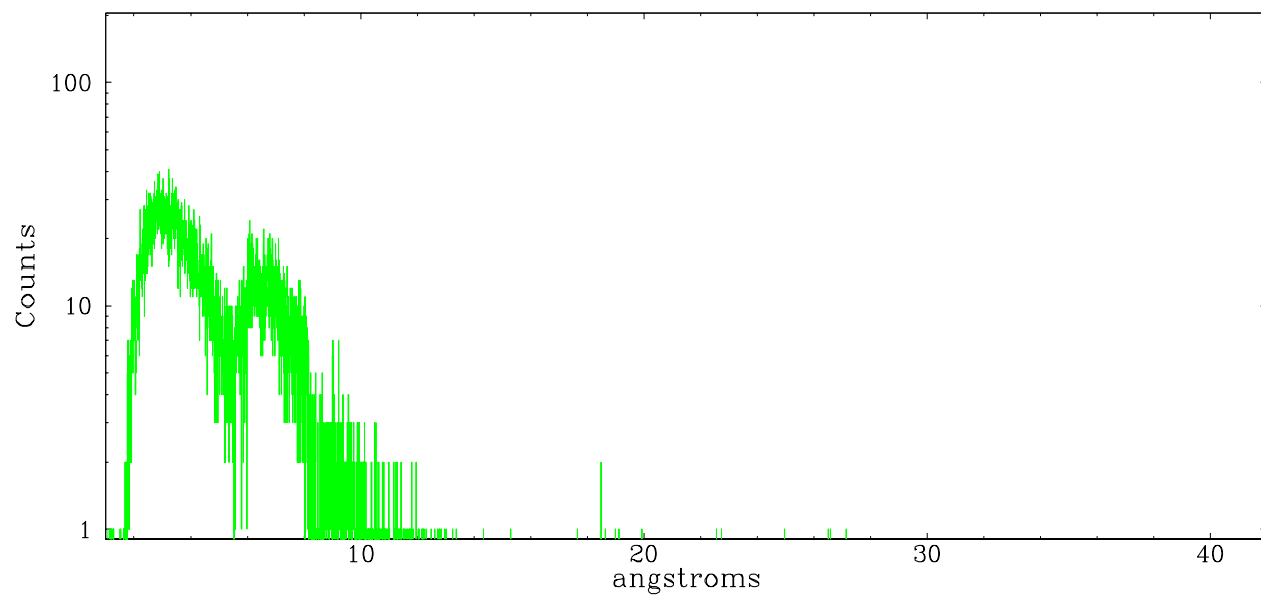
	order -3	order -2	order -1	order 0	order 1	order 2	order 3
Events	1986	728	15921	13655	18853	639	1648



meg order -1



meg order +1



A Summary

A.1 Status

V&V Scientist	Beth Sundheim
V&V Date (YYYY-MM-DD)	2006.10.06
V&V Edition	1
V&V Disposition and Status	OK
V&V Charge Time	57.372

A.2 Comments