

V&V Reference Report

L2 ASCDS Version : 7.6.8.1

Observation 2706 - L2 Version 3
Chandra X-Ray Center

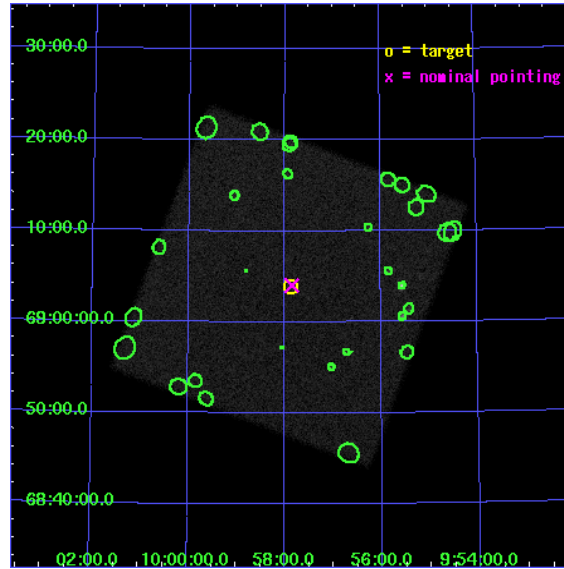
L2 Processing Date : Nov 21 2007

Contents

1	Front	2
2	OBI	3
2.1	OBI	3
2.1.1	Images	3
2.1.2	Parameters	4
2.1.3	Events	4
2.2	Compared Parameters	5
2.3	Aspect	6
2.4	Star Slots	9
2.4.1	Slot 3	9
2.4.2	Slot 4	10
2.4.3	Slot 5	11
2.4.4	Slot 6	12
2.4.5	Slot 7	13
2.5	FID Slots	14
2.5.1	Slot 0	14
2.5.2	Slot 1	15
2.5.3	Slot 2	16
3	Point Sources	17
A	Summary	18
A.1	Status	18
A.2	Comments	18

1 Front

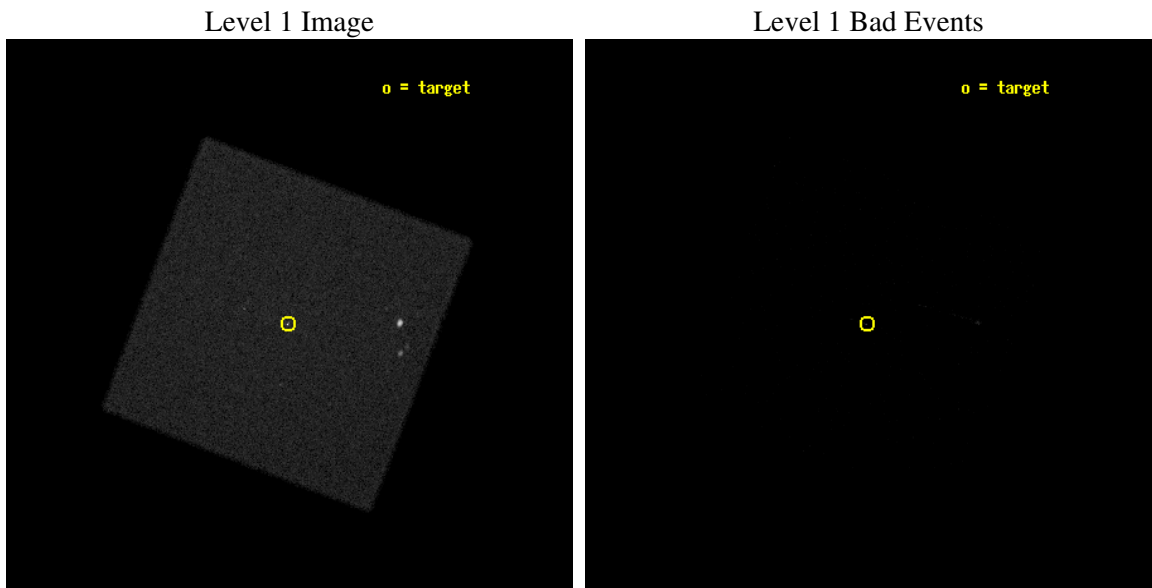
seq_num	400186
obs_id	2706
title	AN ULTRALUMINOUS BINARY IN A HORSESHOE NEBULA?
observer	Dr. Patrick Slane
object	1E0953.8+6918
ra_targ	149.470833
dec_targ	69.064167
ra_nom	149.46343038392
dec_nom	69.067303116411
roll_nom	155.85663754125
revision	3
ontime	7180.1252892613
livetime	7141.5436532661
l2events	203161



2 OBI

2.1 OBI

2.1.1 Images



2.1.2 Parameters

obi_num	1
ascdsver	7.6.11.2
caldbver	3.4.1
date	2007-11-21T19:12:12
revision	3

sched_exp_time	7000.000000
ontime	7180.1252892613
l1events	326745

2.1.3 Events

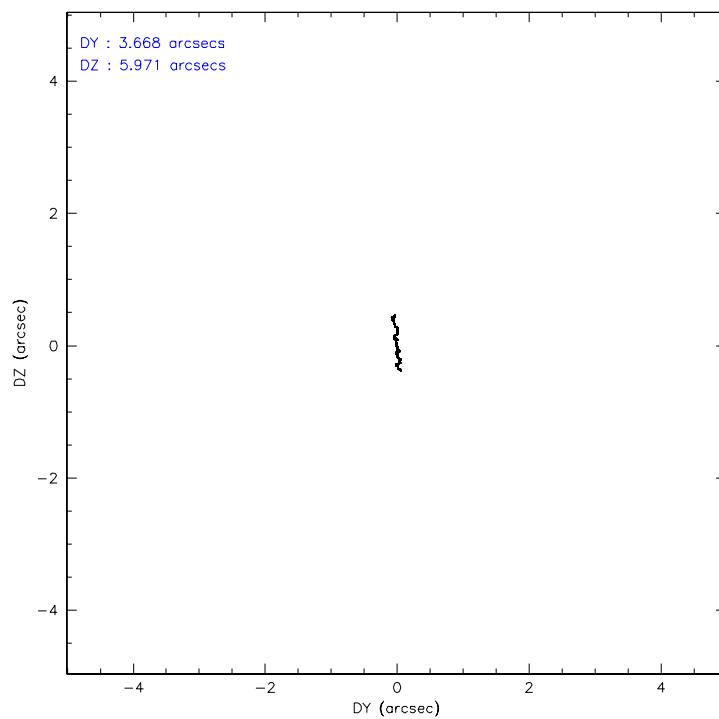
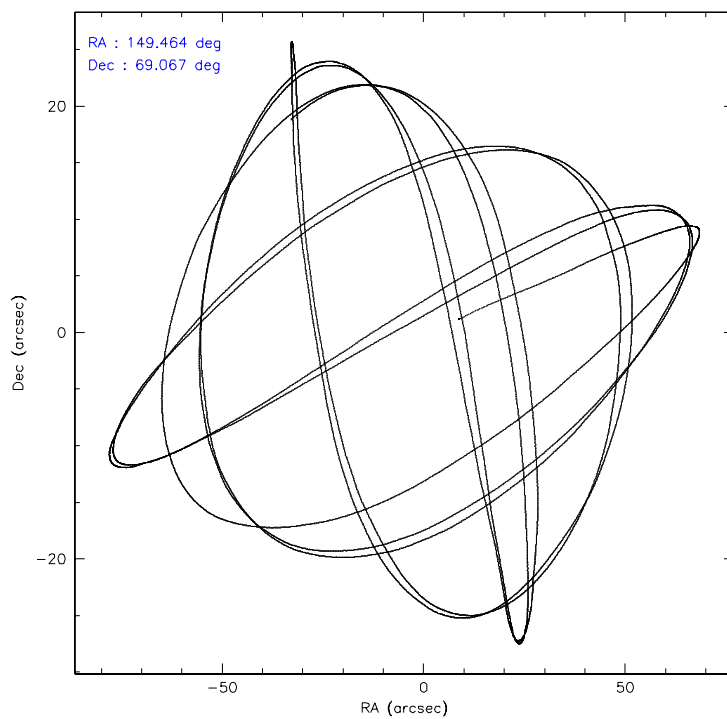
Level 1 Events

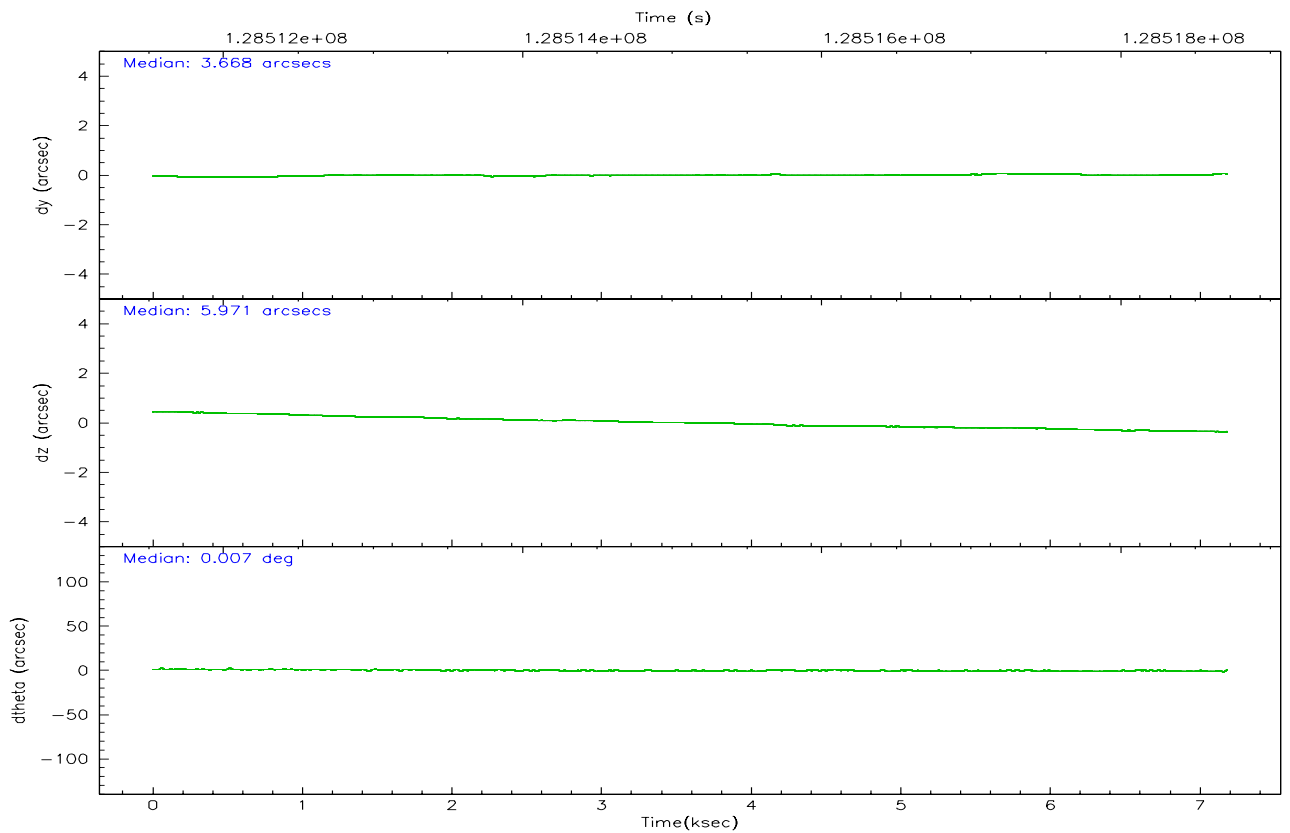
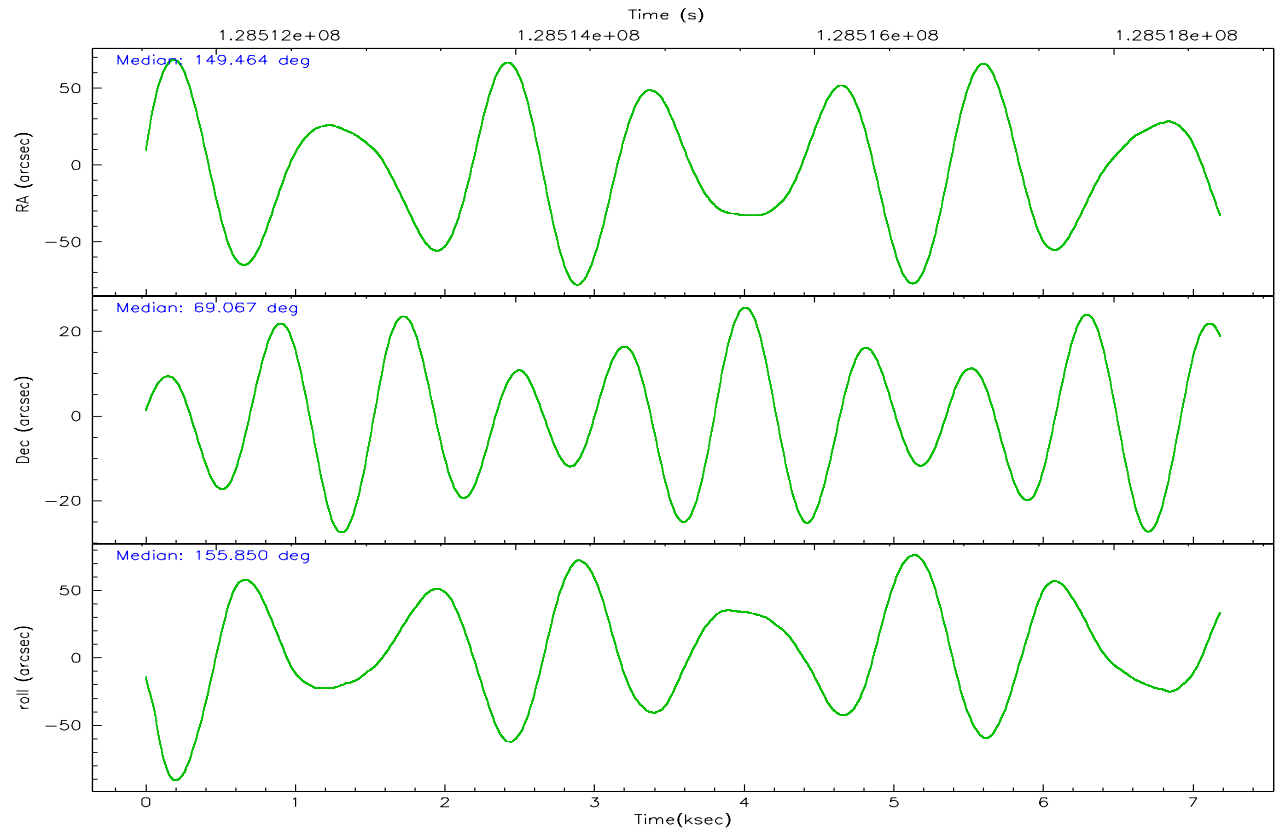
	segment 0
level 1 events	326745
rejected events	25196
rejected %	7%

2.2 Compared Parameters

Parameter	Planned	Actual	Parameter	Planned	Actual
Instrument	HRC	HRC	Obspar format version number	6	6
Detector	HRC-I	HRC-I	Obspar file type	PREDICTED	ACTUAL
Grating	NONE	NONE	Obspar update status	NONE	UPDATED
Data mode	OBSERVING	OBSERVING			
Observation mode	POINTING	POINTING			
Pointing RA	149.538129	149.463430383921			
Pointing Dec	69.070565	69.0673031164113			
Pointing Roll	155.882365	155.8566375412483			
SIM focus pos (mm)	-1.040293	-1.038866356238299			
SIM defocus (mm)	0	0.001426264420575141			
SIM translation stage pos (mm)	126.985494	126.9854943052878			
SIM translation stage offset (mm)	0	-5.413686238853188e-06			
Observation start time	128511710.184000	128511046.25359			
Observation start date	2002-01-27T09:40:46	2002-01-27T09:30:46			
Observation end time	128518710.184000	128518844.45391			
Observation end date	2002-01-27T11:37:26	2002-01-27T11:40:44			

2.3 Aspect



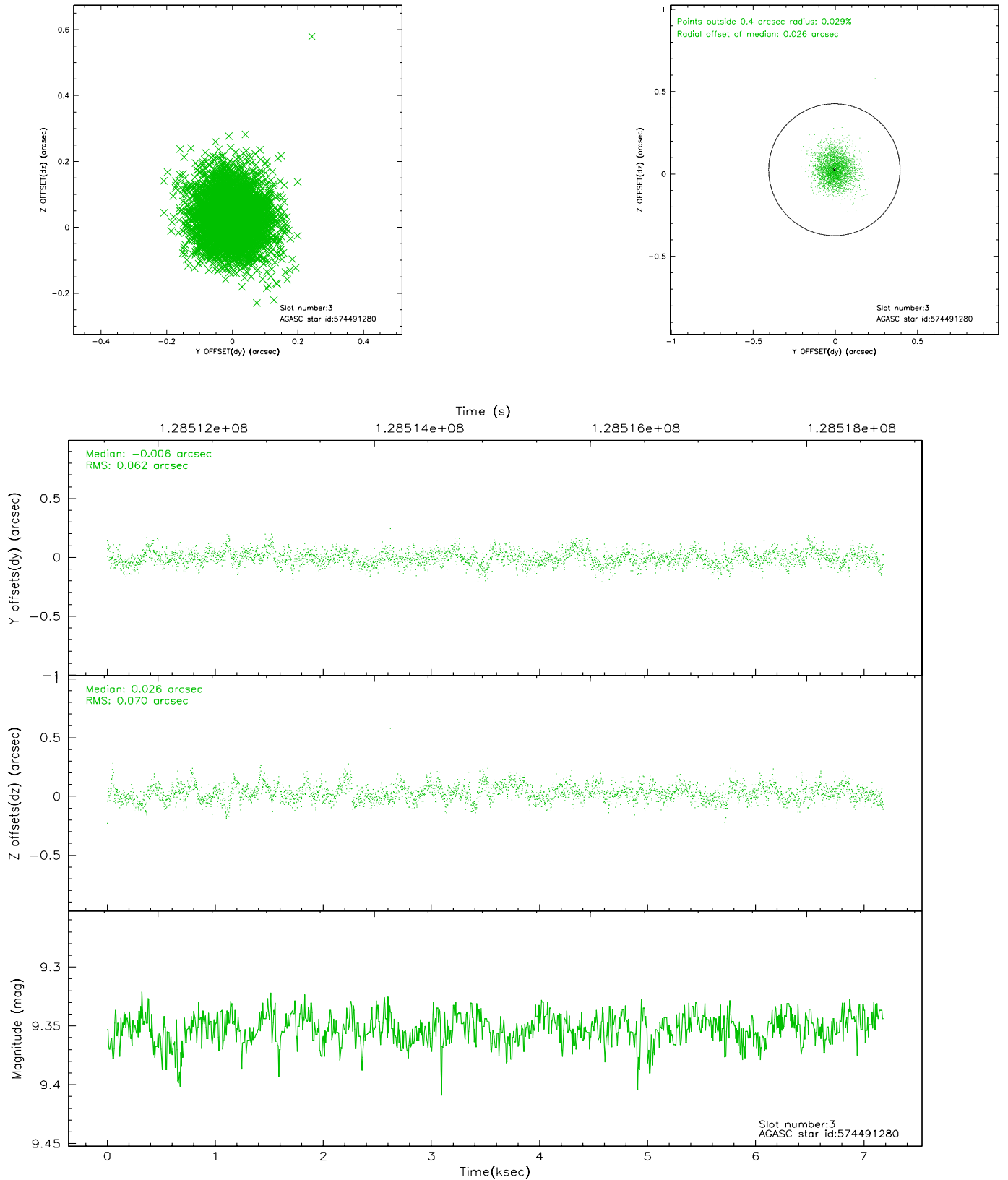


Slot Statistics

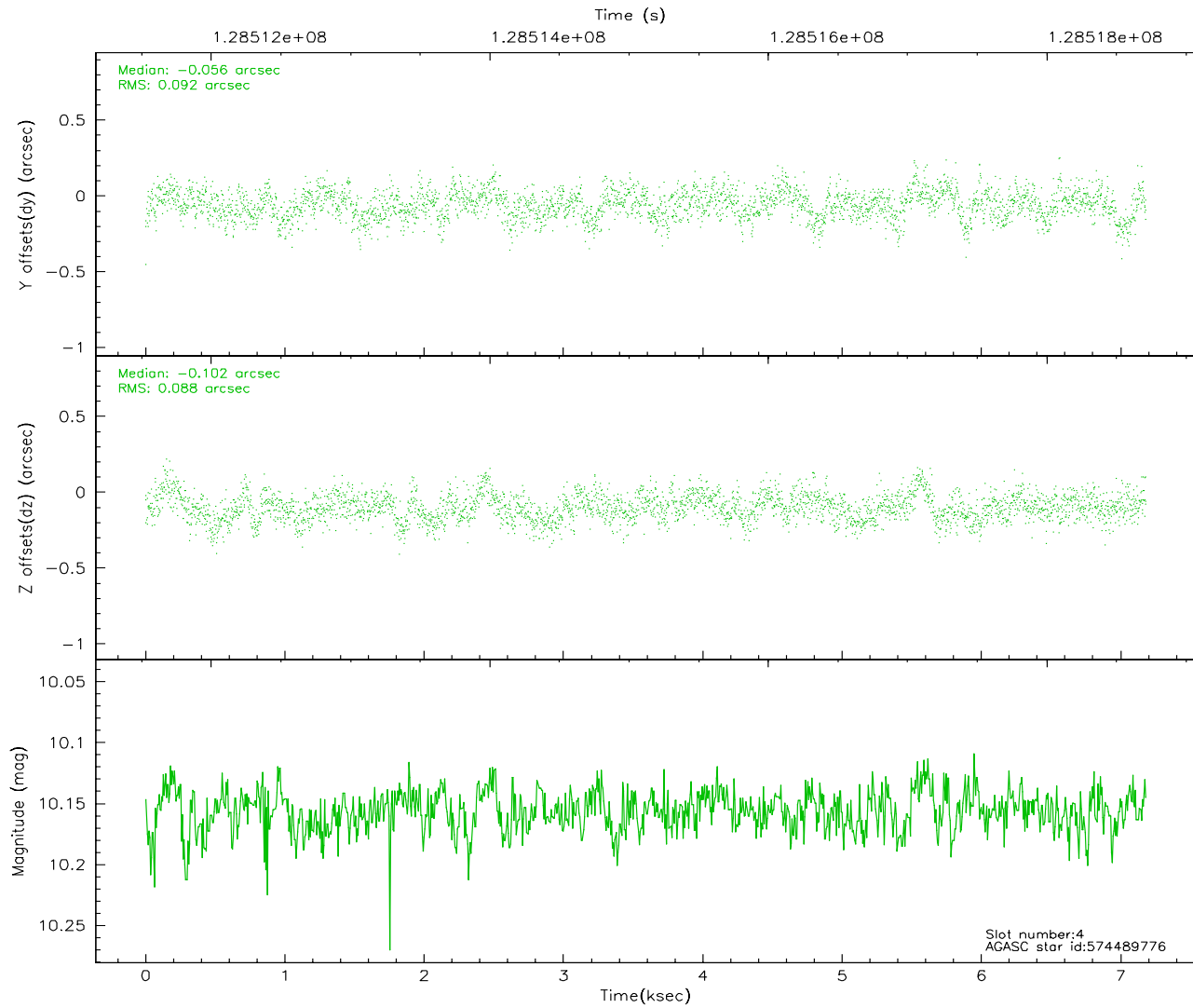
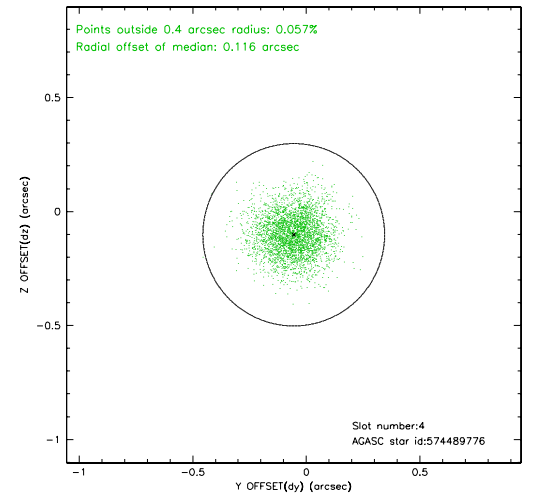
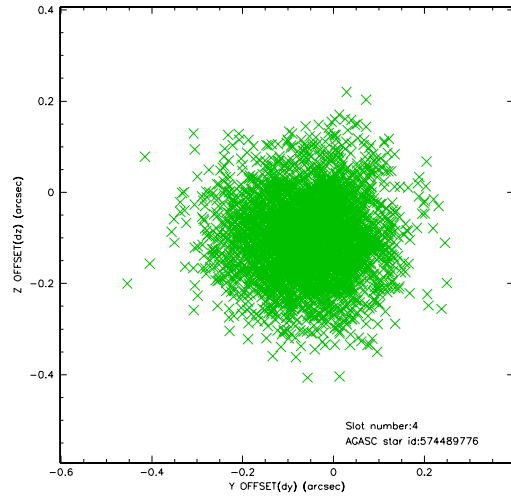
slot	status	id	mag	n_pts	med_dy	med_dz	dr1	dr2	ra	dec	mean_y	mean_z
0	FID	HRC-I-1	6.96	1752	0.010	0.029	0.007	0.013	0.000000	0.000000	-759.11	-1293.85
1	FID	HRC-I-2	7.01	1752	0.073	-0.047	0.006	0.010	0.000000	0.000000	853.15	-1296.18
2	FID	HRC-I-3	7.05	1752	0.037	-0.072	0.008	0.016	0.000000	0.000000	-1187.15	1009.87
3	GUIDE	574491280	9.35	3498	-0.006	0.026	0.099	0.160	148.611567	69.450135	1632.02	-776.31
4	GUIDE	574489776	10.16	3495	-0.056	-0.102	0.135	0.220	148.323662	69.046710	1399.67	703.00
5	GUIDE	574504944	10.12	3487	0.091	0.075	0.139	0.231	148.895750	69.648700	1588.06	-1574.28
6	GUIDE	574496080	9.91	3502	-0.046	-0.023	0.147	0.247	149.336129	69.802025	1307.15	-2301.30
7	GUIDE	574496360	9.46	3499	0.017	0.018	0.110	0.178	150.806604	68.529829	-2312.33	1077.28

2.4 Star Slots

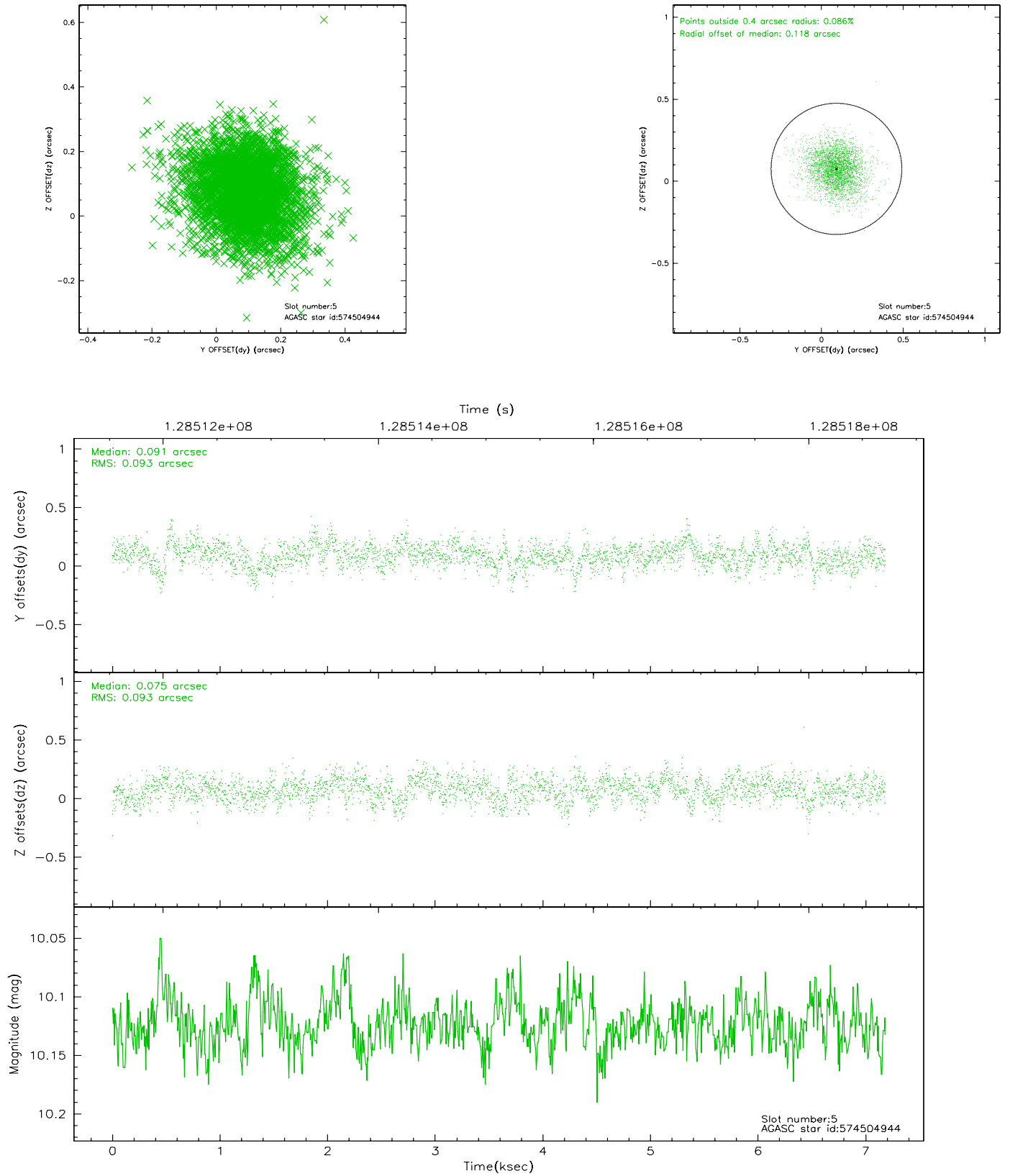
2.4.1 Slot 3



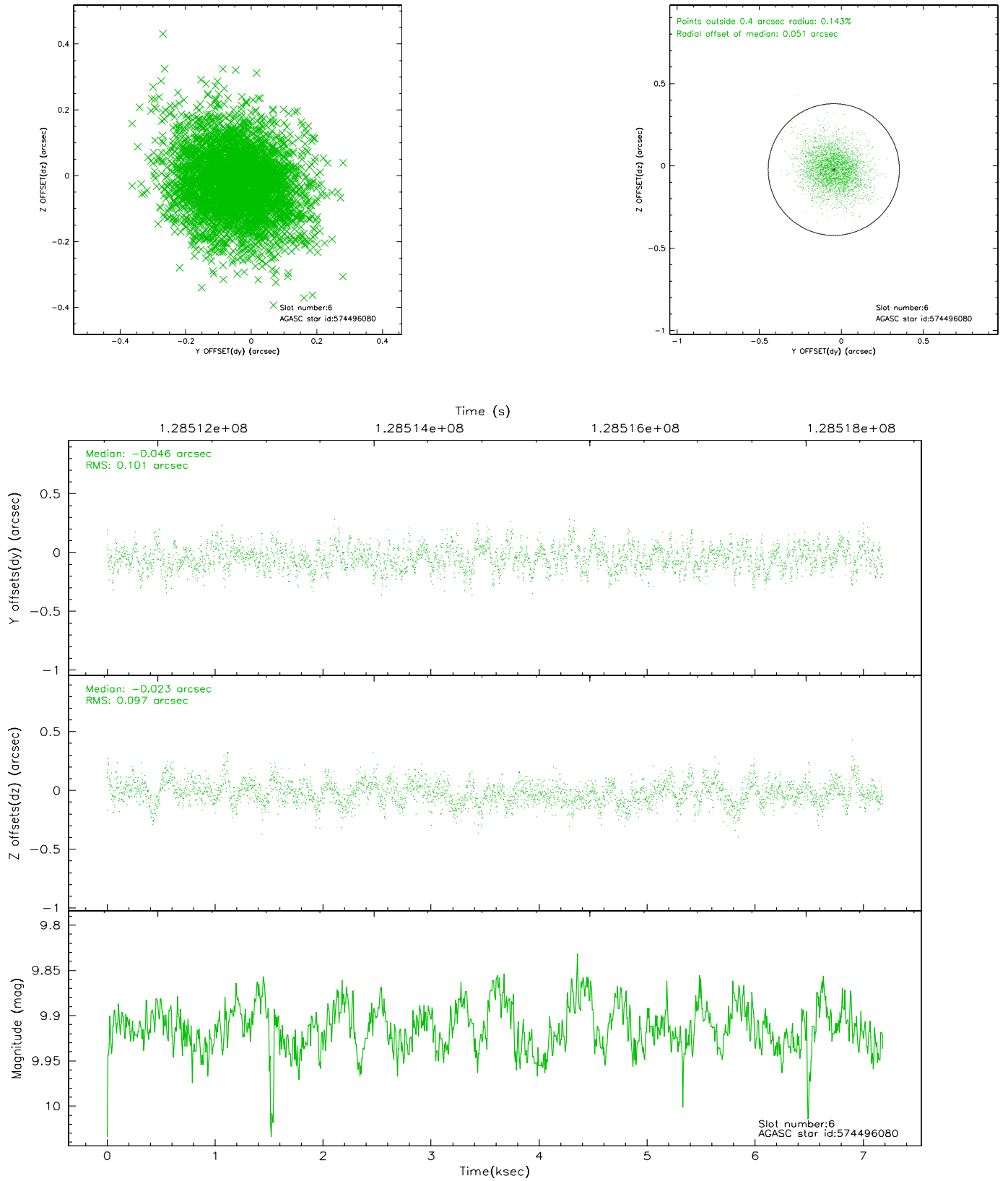
2.4.2 Slot 4



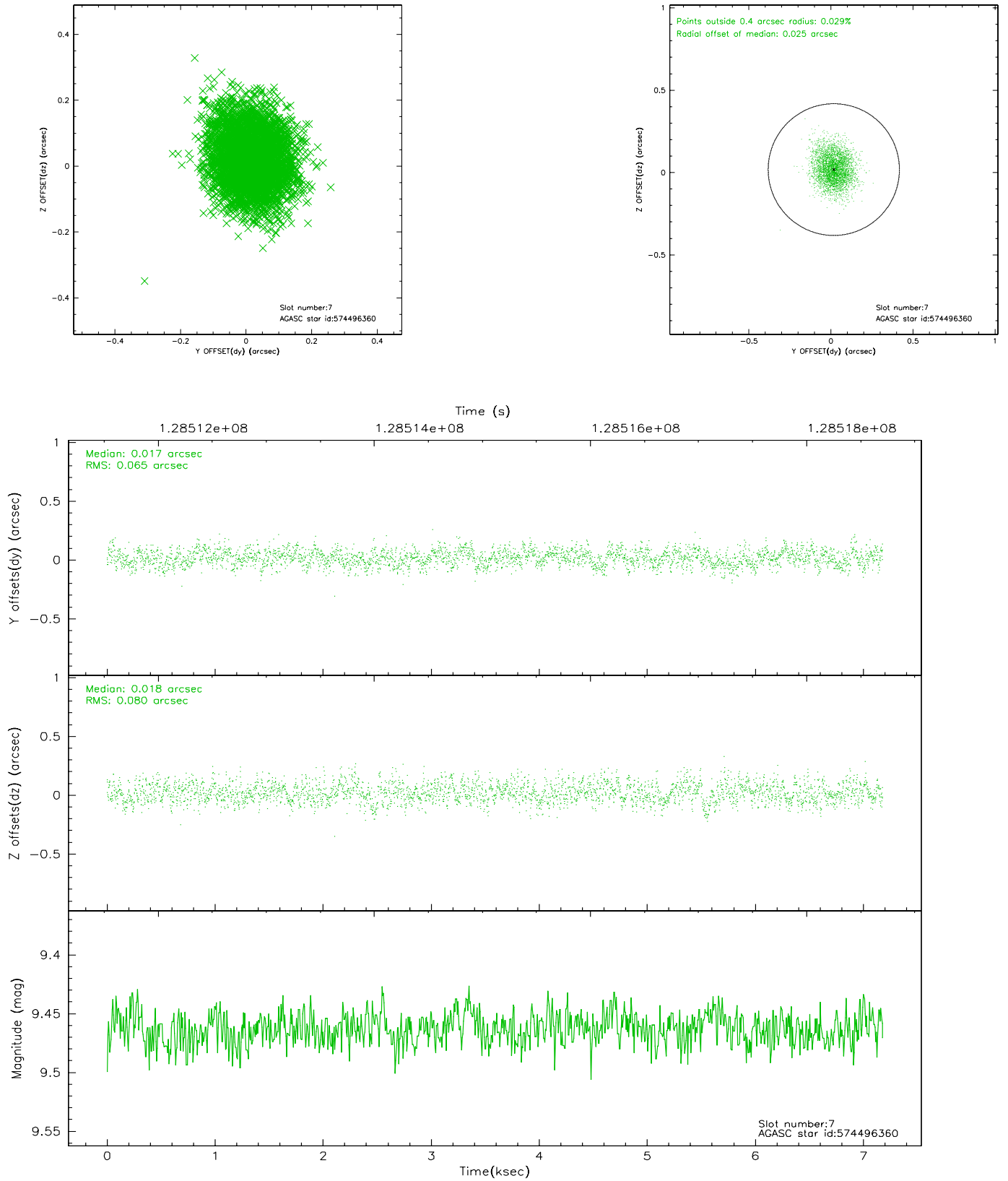
2.4.3 Slot 5



2.4.4 Slot 6

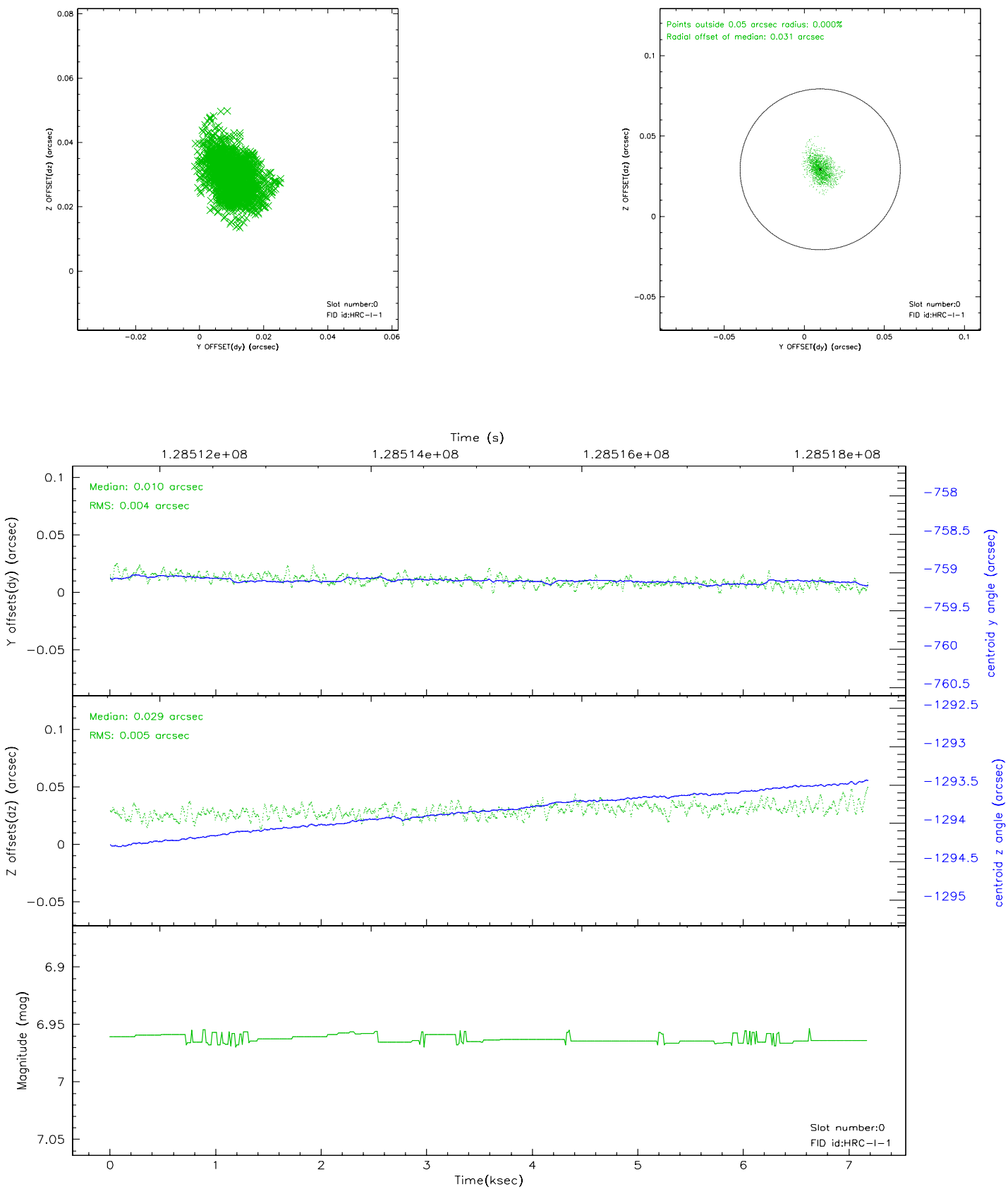


2.4.5 Slot 7

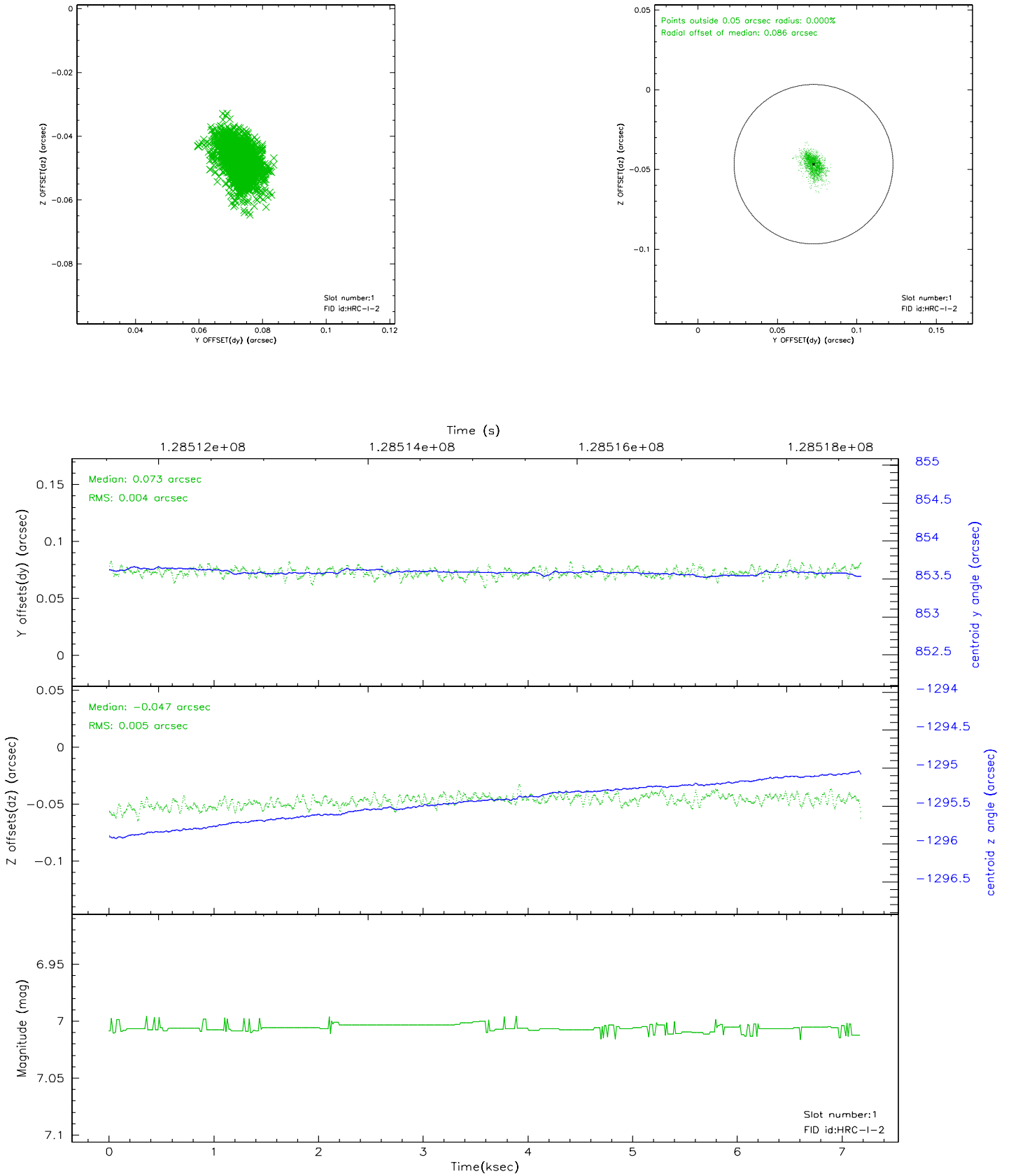


2.5 FID Slots

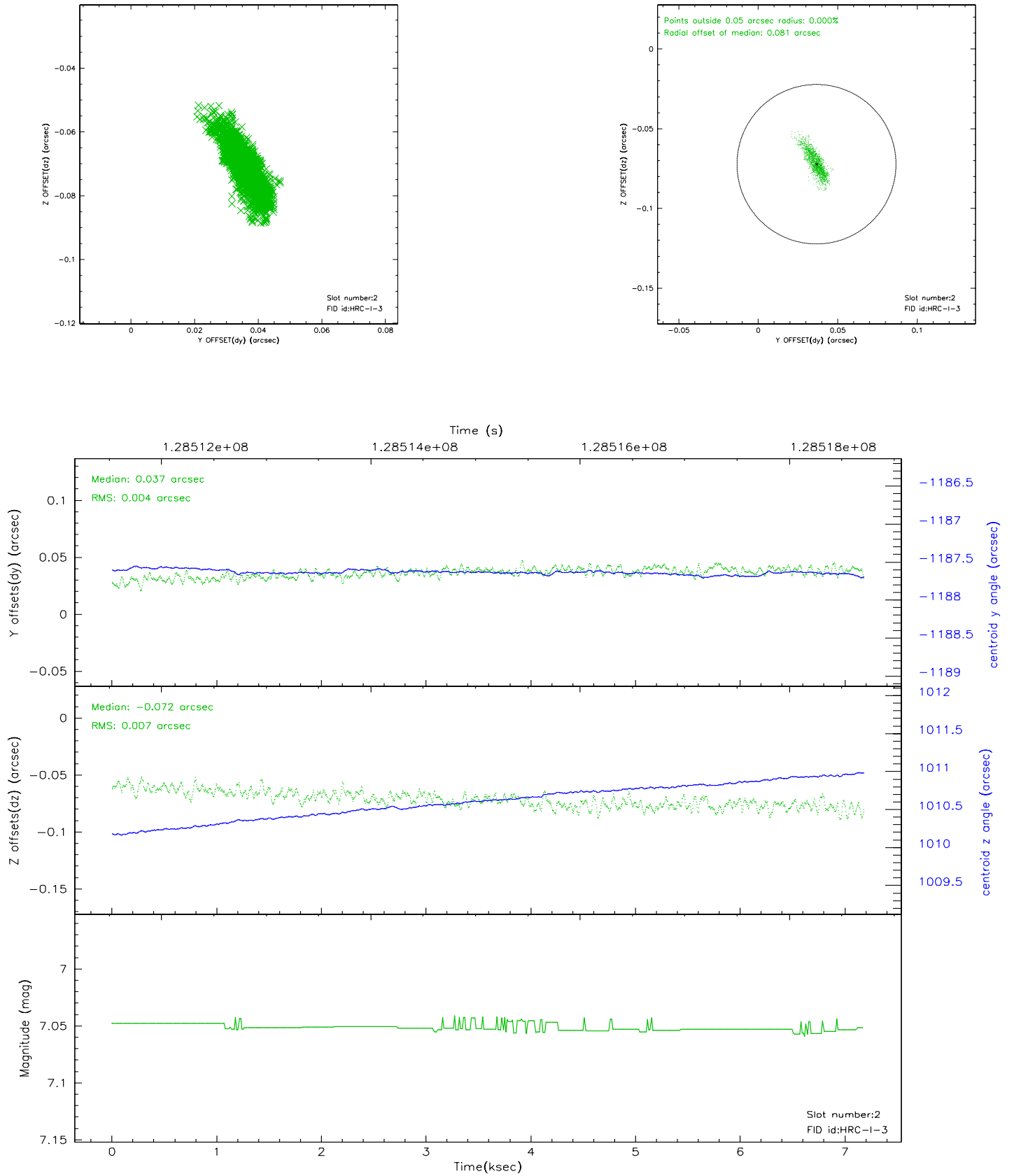
2.5.1 Slot 0



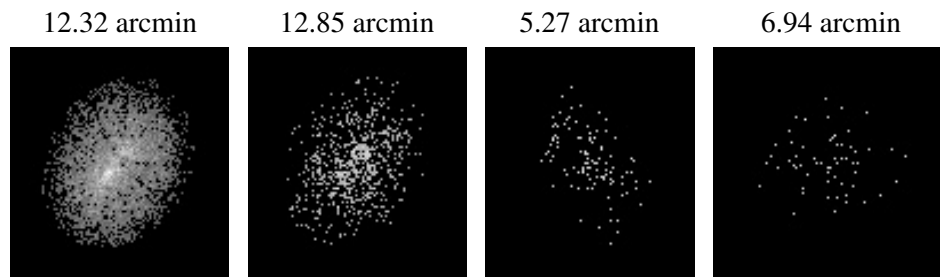
2.5.2 Slot 1



2.5.3 Slot 2



3 Point Sources



A Summary

A.1 Status

V&V Scientist	Jen Lauer
V&V Date (YYYY-MM-DD)	2007.12.04
V&V Edition	1
V&V Disposition and Status	OK
V&V Charge Time	7.176

A.2 Comments

The current observation has been reprocessed as part of Repro III ('C' supplement) the purpose of which is to update all HRC-I ObsIDs since Jan 2000 to the latest calibrations available for that configuration. Specifically, we are updating the DEGAP solution and the Gain Maps applied. For more information see the Repro IIIC web page at

<http://asc.harvard.edu/cda/repro3.html#IIIC>

and the associated links.