

# V&V Reference Report

## L2 ASCDS Version : 7.6.9

Observation 2684 - L2 Version 001  
Chandra X-Ray Center

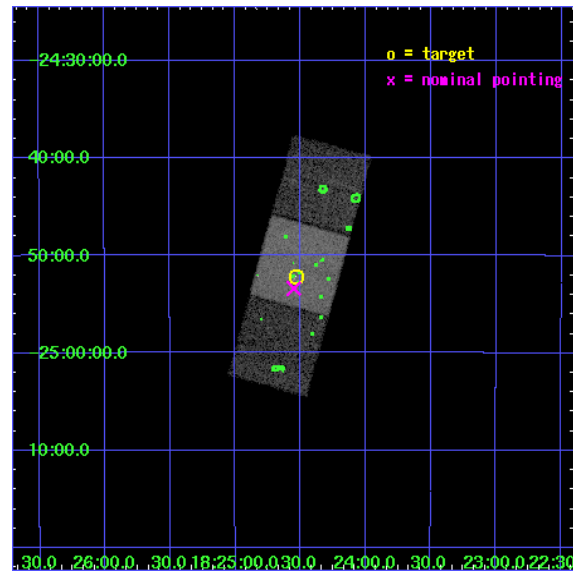
L2 Processing Date : Sep 22 2006

## Contents

<b>1</b>	<b>Front</b>	<b>2</b>
<b>2</b>	<b>OBI</b>	<b>3</b>
2.1	OBI . . . . .	3
2.1.1	Images . . . . .	3
2.1.2	Bias . . . . .	3
2.1.3	Parameters . . . . .	4
2.1.4	Events . . . . .	4
2.2	Compared Parameters . . . . .	5
2.3	Aspect . . . . .	6
2.4	Star Slots . . . . .	9
2.4.1	Slot 3 . . . . .	9
2.4.2	Slot 4 . . . . .	10
2.4.3	Slot 5 . . . . .	11
2.4.4	Slot 6 . . . . .	12
2.4.5	Slot 7 . . . . .	13
2.5	FID Slots . . . . .	14
2.5.1	Slot 0 . . . . .	14
2.5.2	Slot 1 . . . . .	15
2.5.3	Slot 2 . . . . .	16
<b>3</b>	<b>Point Sources</b>	<b>17</b>
<b>A</b>	<b>Summary</b>	<b>18</b>
A.1	Status . . . . .	18
A.2	Comments . . . . .	18

# 1 Front

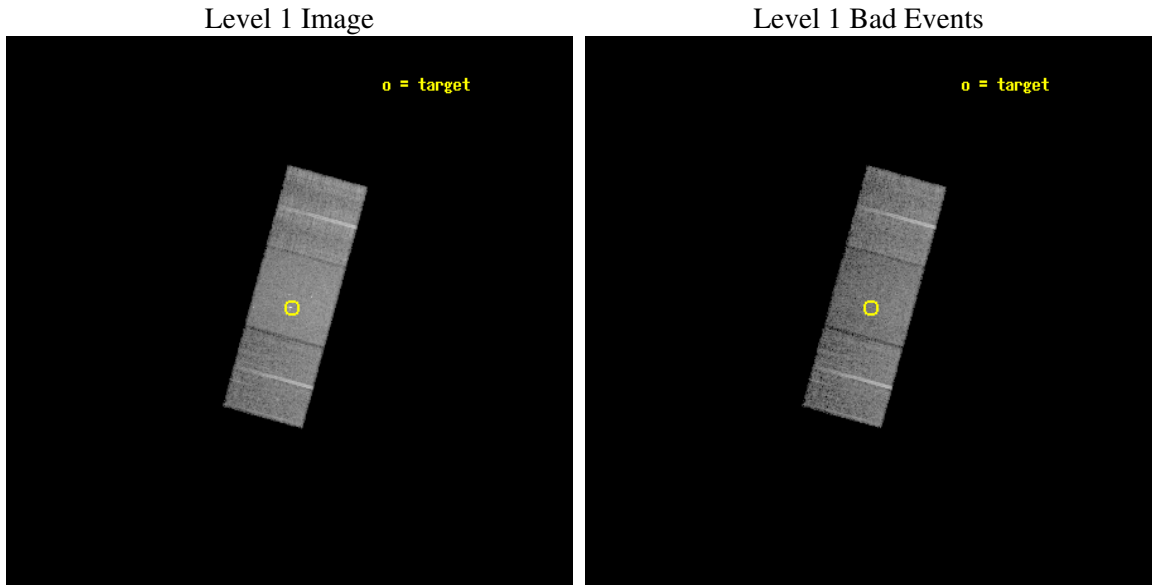
seq_num	300085
obs_id	2684
title	MULTIWAVELENGTH STUDY OF THE GLOBULAR CLUSTER M28 (NGC~6626)
observer	Dr. Werner Becker
object	M28
dtcycle	0
cycle	P
ra_targ	276.133333
dec_targ	-24.869639
ra_nom	276.1375653899
dec_nom	-24.890048809524
roll_nom	285.35411493648
revision	2
ontime	12914.599975169
livetime	12745.861218903
ontime6	12914.599975169
ontime7	12914.599975169
ontime8	12914.599975169
l2events	69021



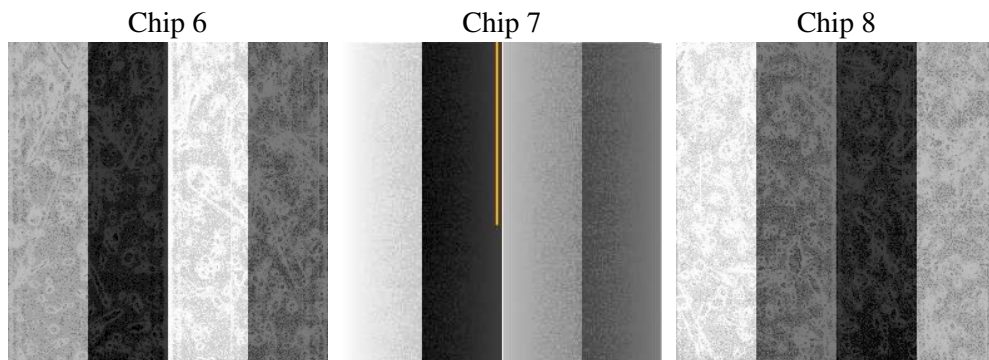
## 2 OBI

### 2.1 OBI

#### 2.1.1 Images



#### 2.1.2 Bias



### 2.1.3 Parameters

obi_num	0
ascdsver	7.6.9
caldsver	3.2.3
date	2006-09-22T16:58:46
revision	2

sched_exp_time	12700.000000
ontime	13066.573096186
ontime6	13066.573096186
ontime7	13066.573096186
ontime8	13066.573076278
l1events	322770

### 2.1.4 Events

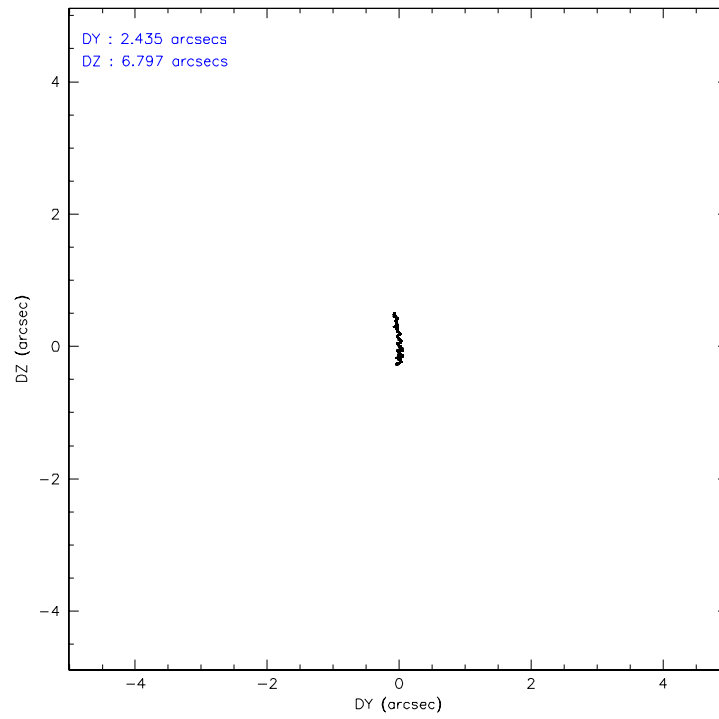
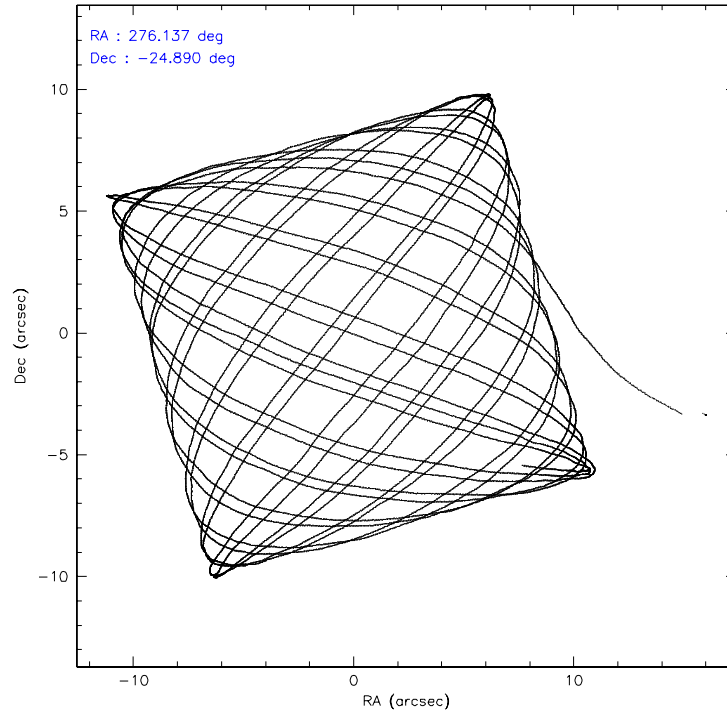
	<b>ccd 6</b>	<b>ccd 7</b>	<b>ccd 8</b>
level 1 events	88359	118087	116324
rejected events	76317	70369	87404
rejected %	86%	59%	75%

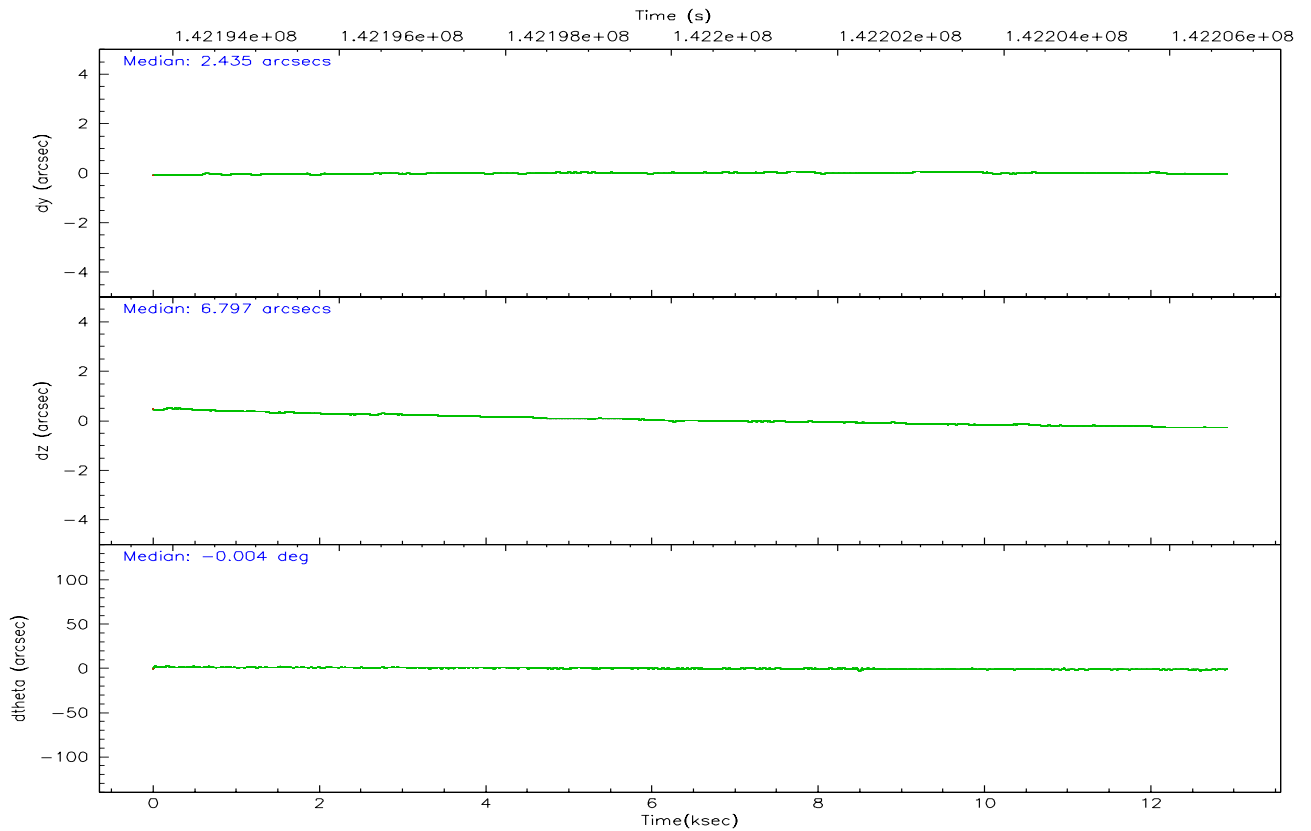
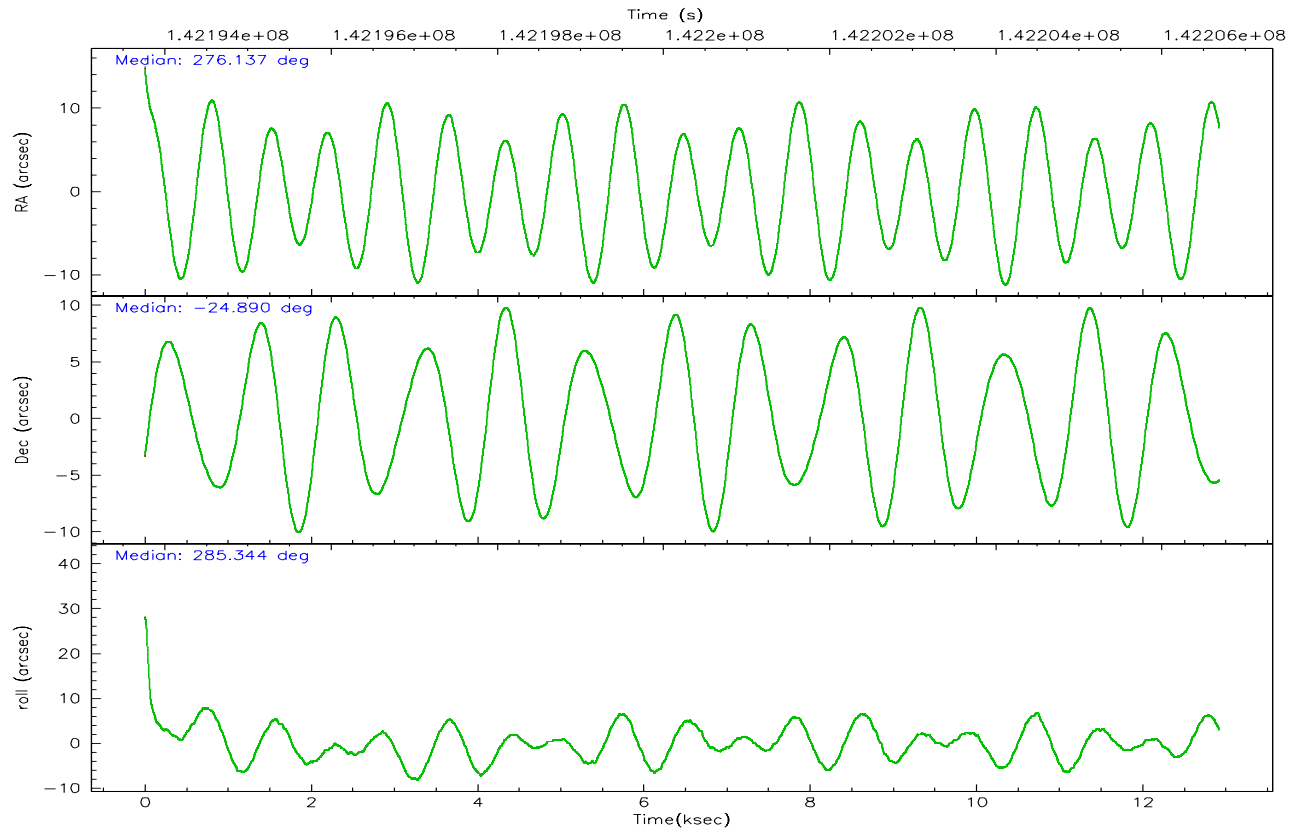
	<b>ccd 6</b>	<b>ccd 7</b>	<b>ccd 8</b>
grade 0 events	5615	3923	10050
	6%	3%	8%
grade 1 events	43	75	82
	0%	0%	0%
grade 2 events	2342	12154	5727
	2%	10%	4%
grade 3 events	1010	2858	3471
	1%	2%	2%
grade 4 events	1054	2764	3254
	1%	2%	2%
grade 5 events	3843	7638	4892
	4%	6%	4%
grade 6 events	2138	26592	6883
	2%	22%	5%
grade 7 events	72314	62083	81965
	81%	52%	70%

## 2.2 Compared Parameters

Parameter	Planned	Actual	Parameter	Planned	Actual
Instrument	ACIS	ACIS	Obspar format version number	6	6
Detector	ACIS-678	ACIS-678	Obspar file type	PREDICTED	ACTUAL
Grating	NONE	NONE	Obspar update status	NONE	UPDATED
Data mode	VFAINT	VFAINT	Number of optional ACIS chips dropped	0	0
Observation mode	POINTING	POINTING	On-chip summing requested	N	N
Pointing RA	276.115900	276.1375653899024	Subarray requested	NONE	NONE
Pointing Dec	-24.871170	-24.89004880952435	Alternating exposures requested	N	N
Pointing Roll	285.188351	285.3541149364838	Primary exposure time	0.000000	3.1
SIM focus pos (mm)	-0.684267	-0.6828225247311905			
SIM defocus (mm)	0	0.001444936568705701			
SIM translation stage pos (mm)	-190.132523	-190.1400660498719			
SIM translation stage offset (mm)	0	0.00754346686406393			
Observation start time	142193981.184000	142193003.57226			
Observation start date	2002-07-04T18:18:37	2002-07-04T18:03:23			
Observation end time	142206681.184000	142207474.52286			
Observation end date	2002-07-04T21:50:17	2002-07-04T22:04:34			
Read mode	TIMED	TIMED			

## 2.3 Aspect





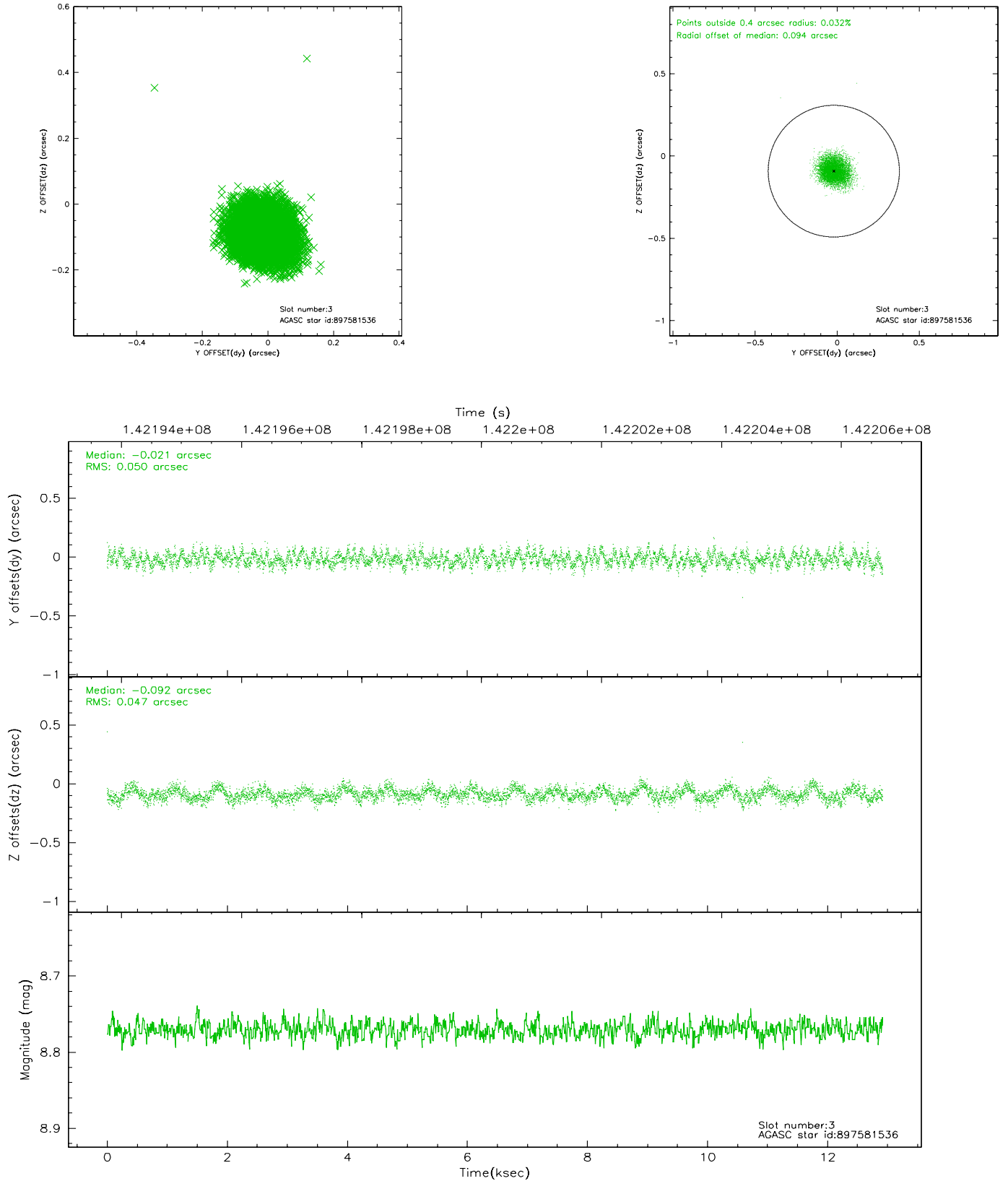
### Slot Statistics

slot	status	id	mag	n_pts	med_dy	med_dz	dr1	dr2	ra	dec	mean_y	mean_z
0	FID	ACIS-S-2	7.12	3151	-0.011	0.035	0.008	0.014	0.000000	0.000000	-755.06	-1727.98
1	FID	ACIS-S-4	7.20	3151	-0.079	-0.004	0.007	0.012	0.000000	0.000000	2157.97	180.10
2	FID	ACIS-S-5	7.24	3151	0.058	-0.022	0.007	0.012	0.000000	0.000000	-1807.36	174.16
3	GUIDE	897581536	8.77	6301	-0.021	-0.092	0.072	0.115	276.270189	-24.414428	-1454.23	918.97
4	GUIDE	899290736	9.46	6293	-0.009	-0.075	0.130	0.204	276.662845	-24.841241	367.21	1752.29
5	GUIDE	897607632	9.00	6299	-0.005	0.072	0.078	0.122	275.528210	-25.239953	784.36	-2194.88
6	GUIDE	897076488	9.45	6300	0.024	0.089	0.087	0.143	275.884089	-24.287832	-2225.11	-184.29
7	GUIDE	897604816	9.64	6296	0.008	0.002	0.099	0.160	276.024863	-24.968377	259.70	-377.94

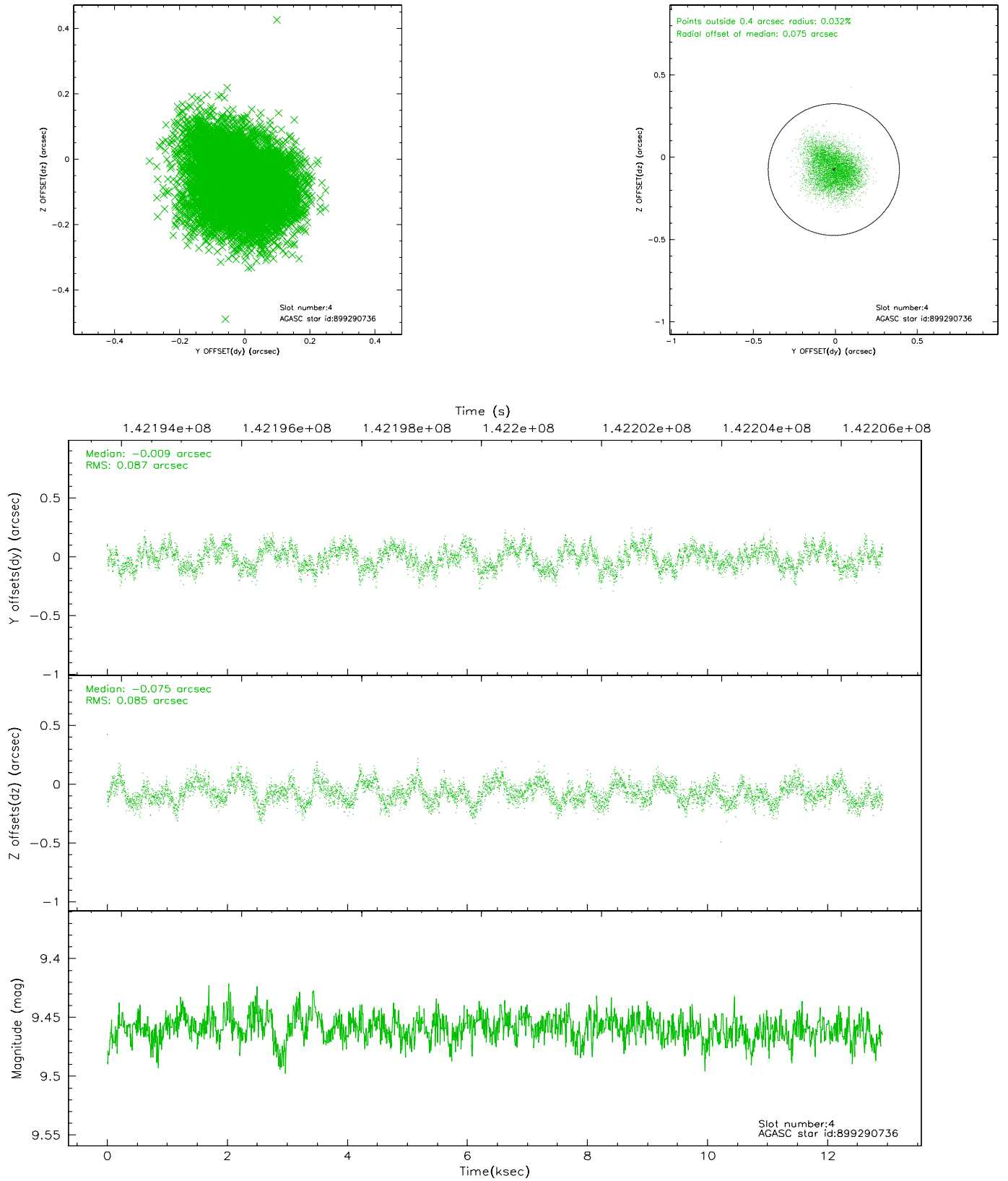


## 2.4 Star Slots

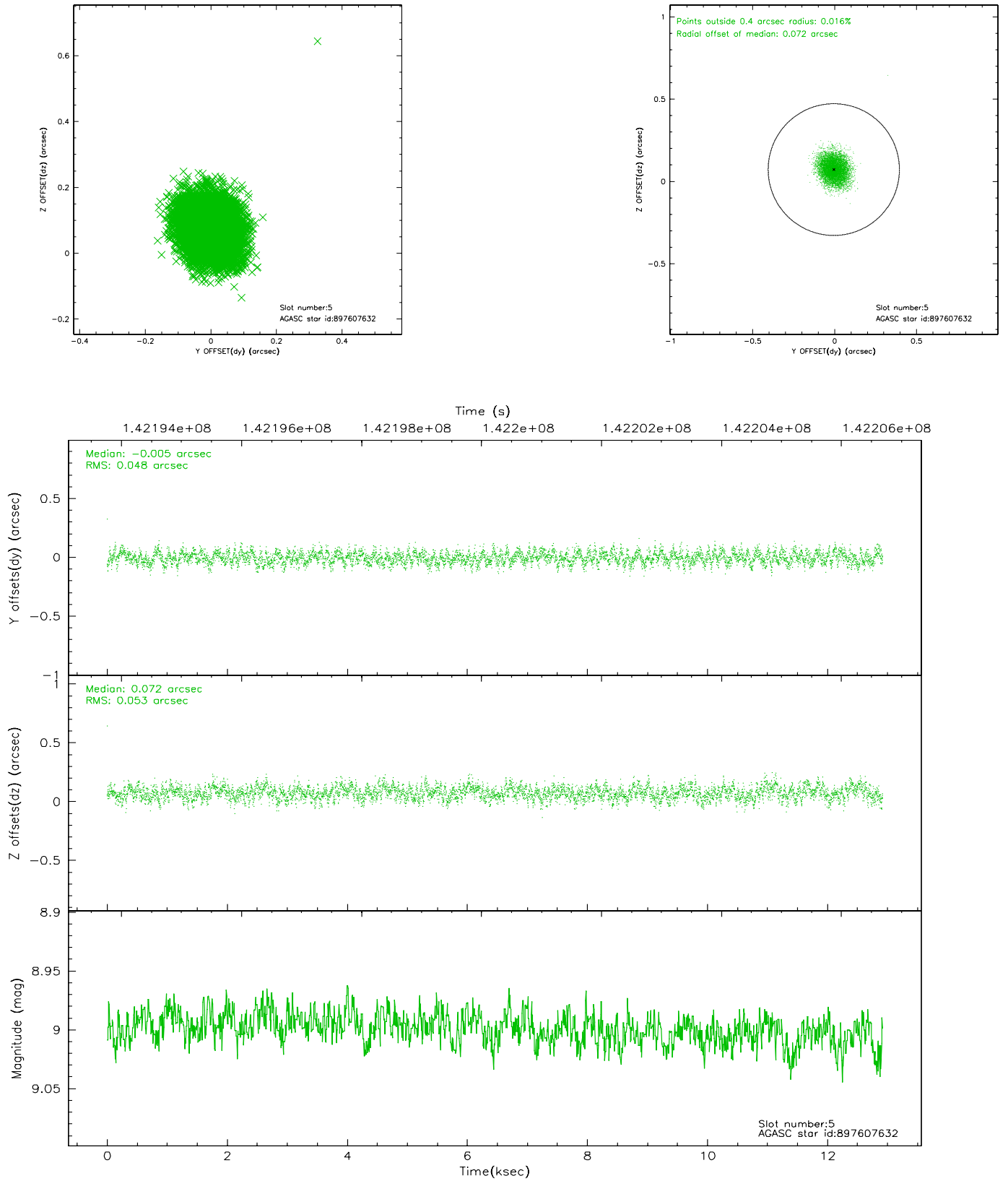
### 2.4.1 Slot 3



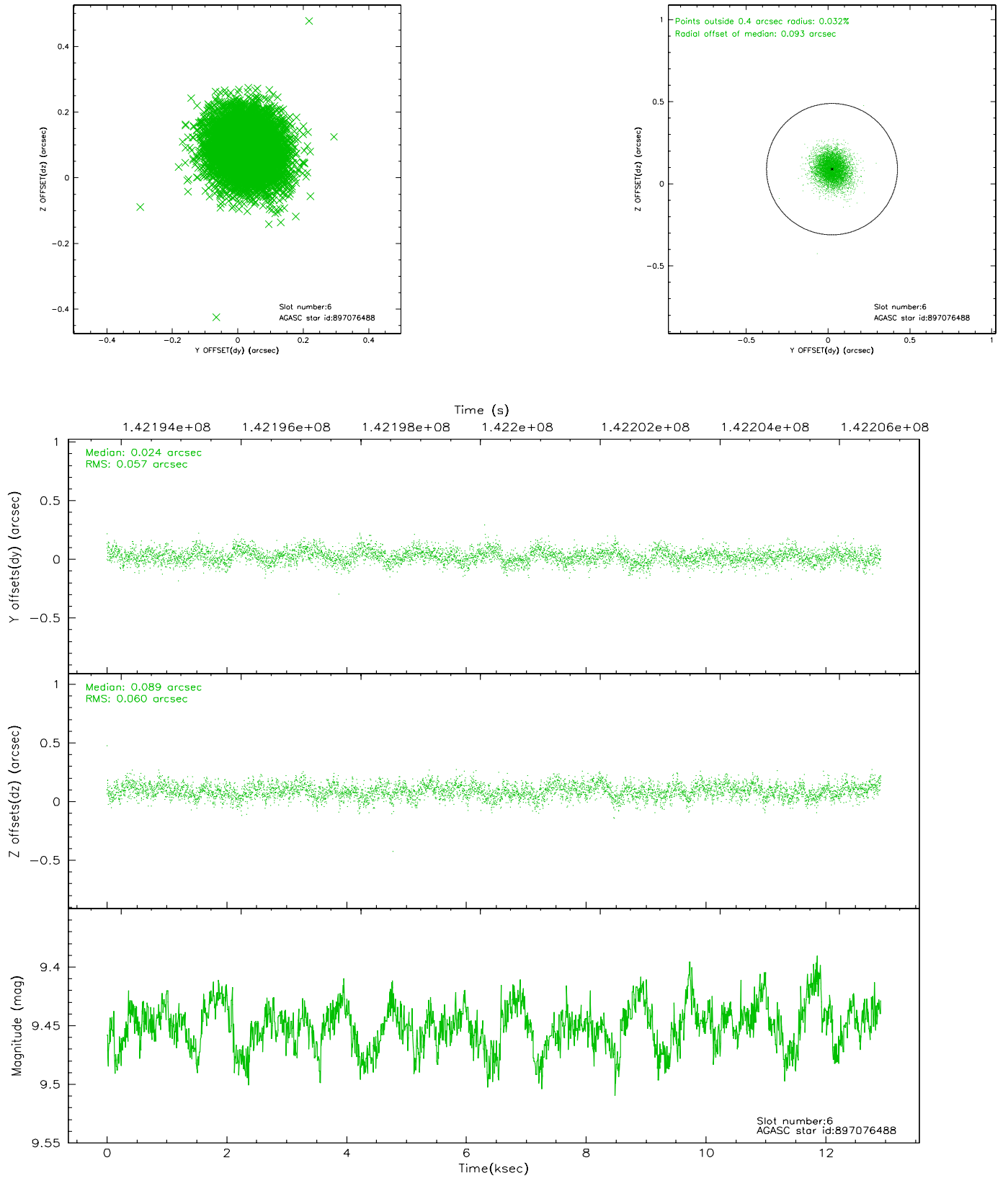
## 2.4.2 Slot 4



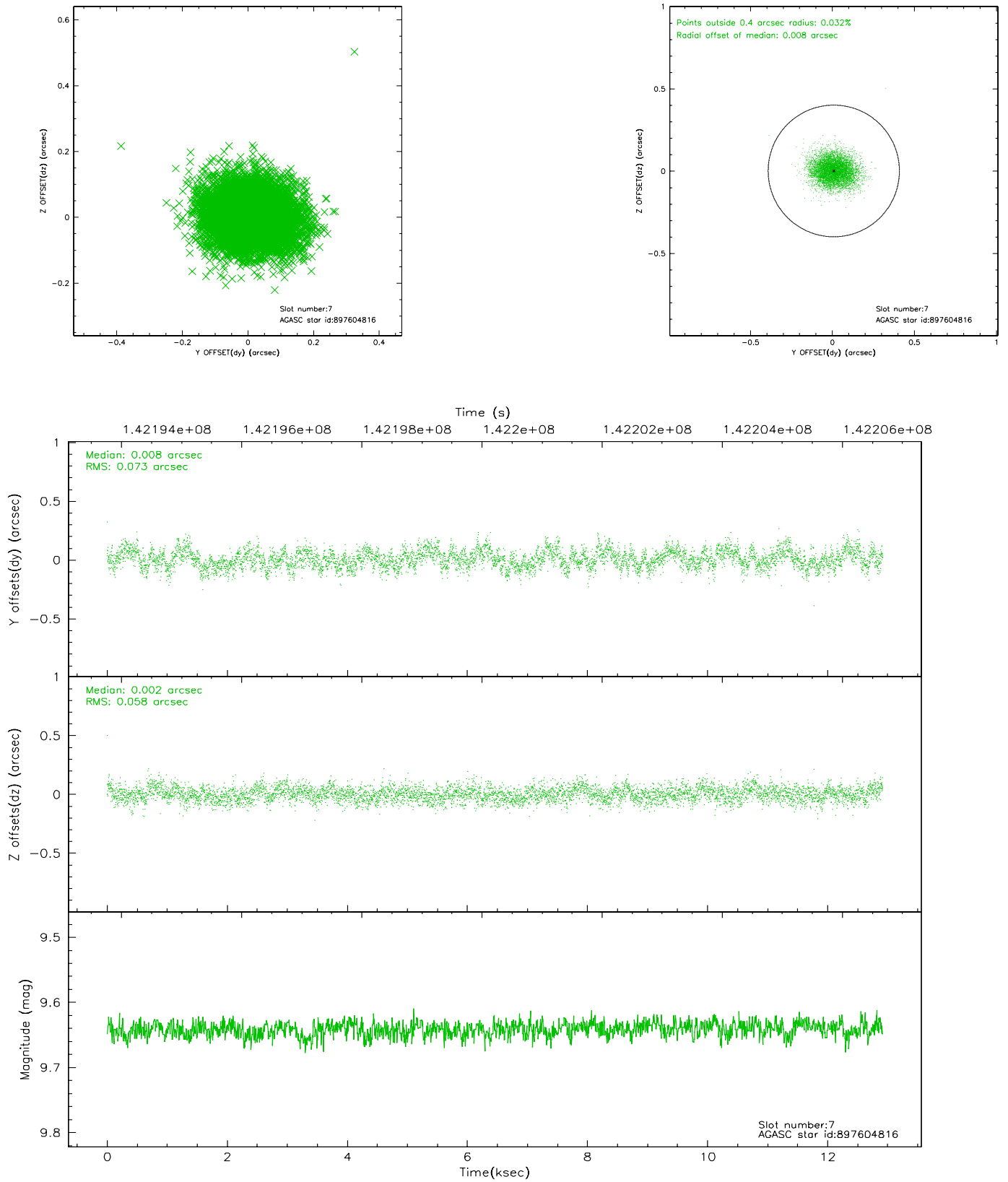
### 2.4.3 Slot 5



## 2.4.4 Slot 6

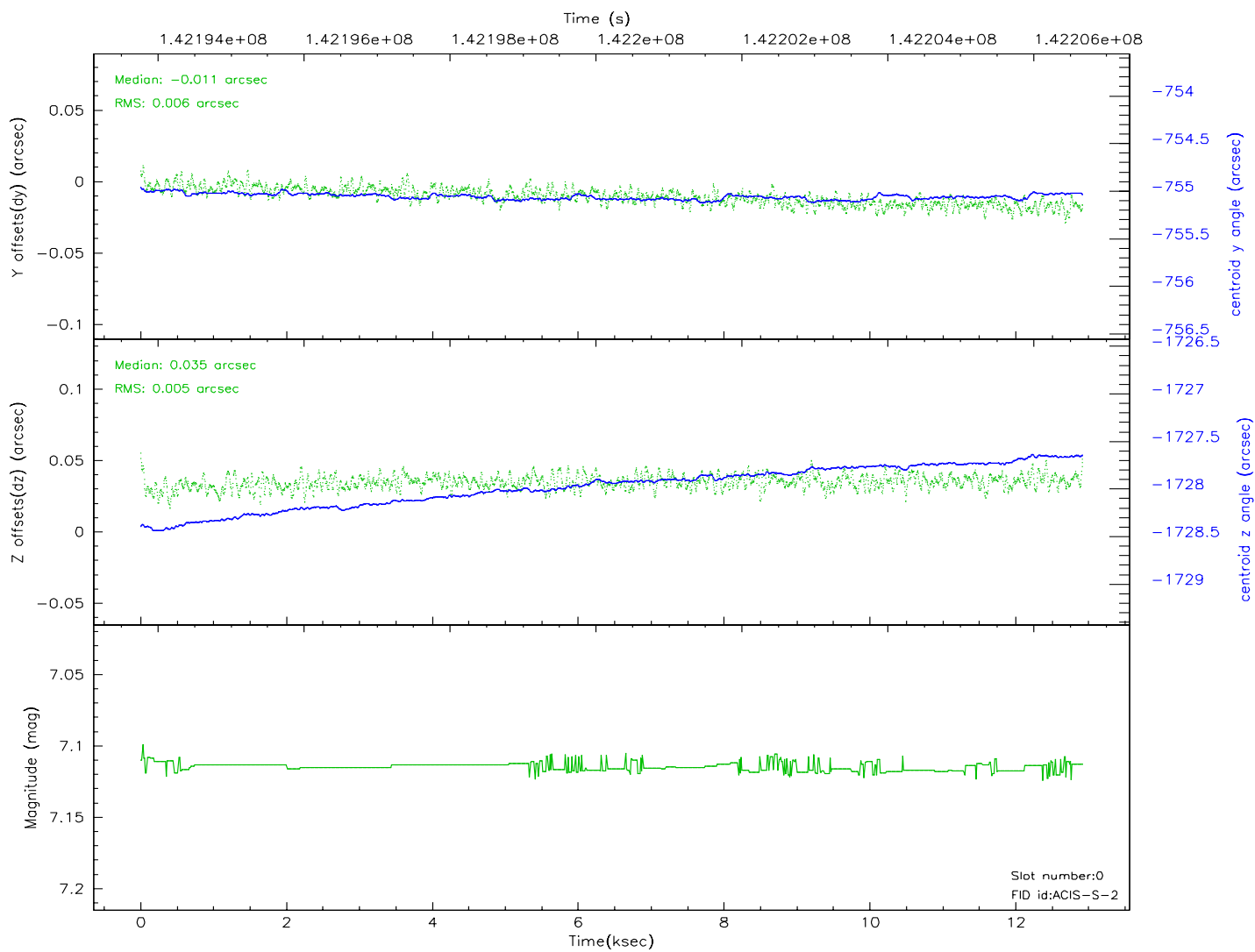
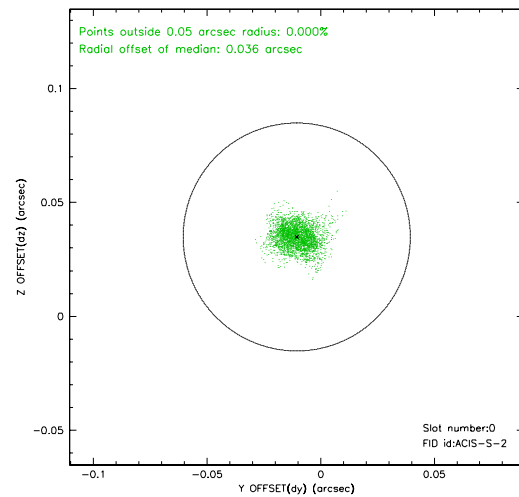
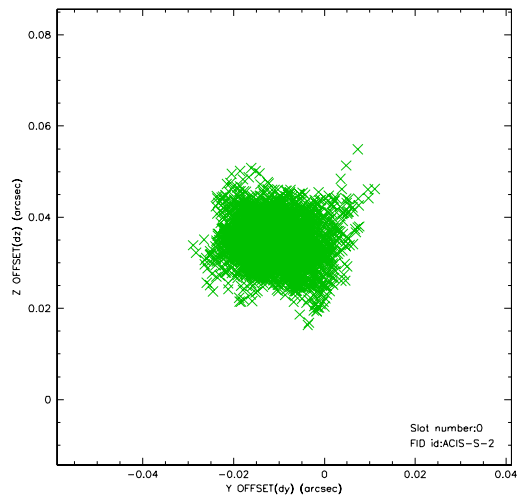


## 2.4.5 Slot 7

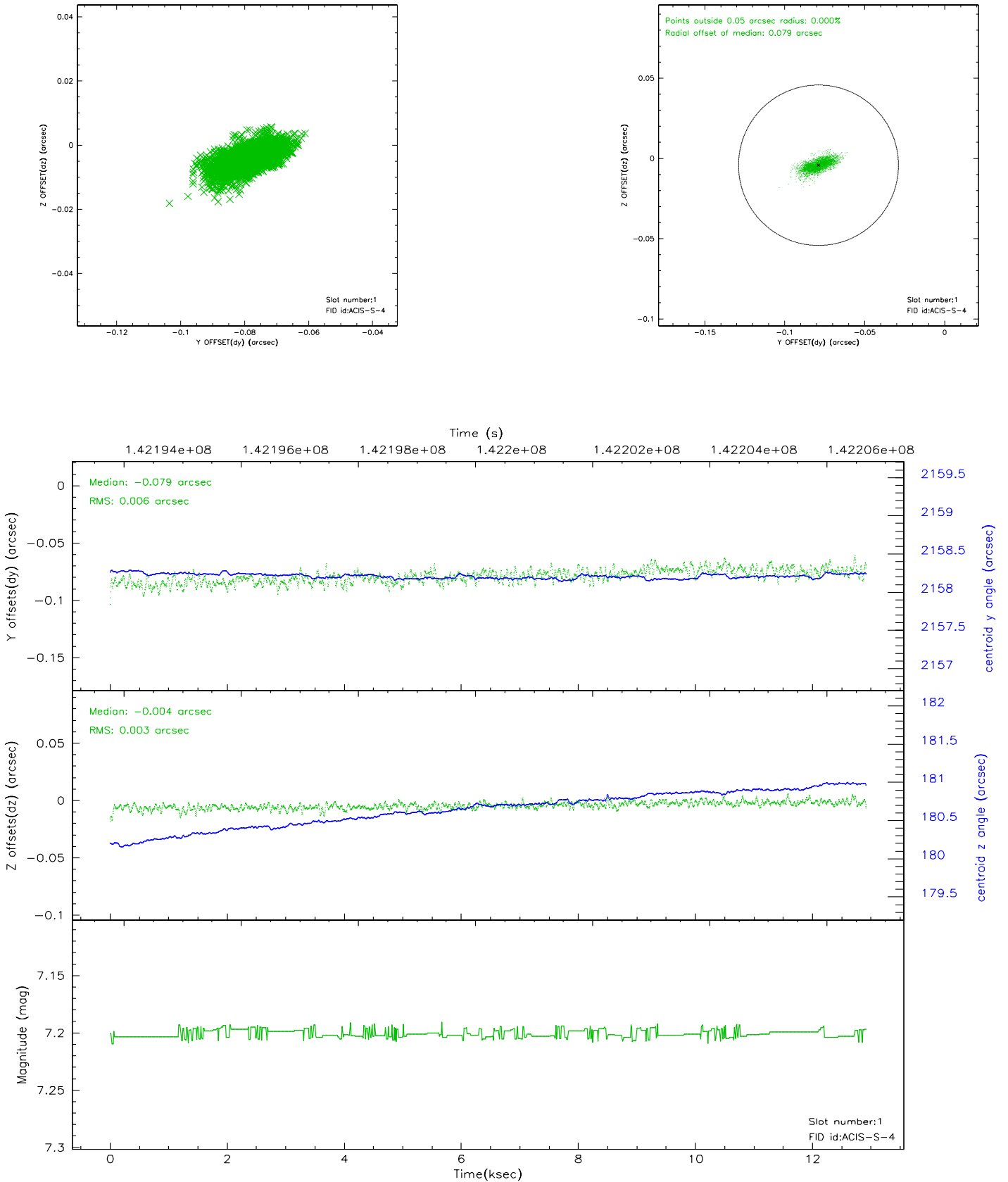


## 2.5 FID Slots

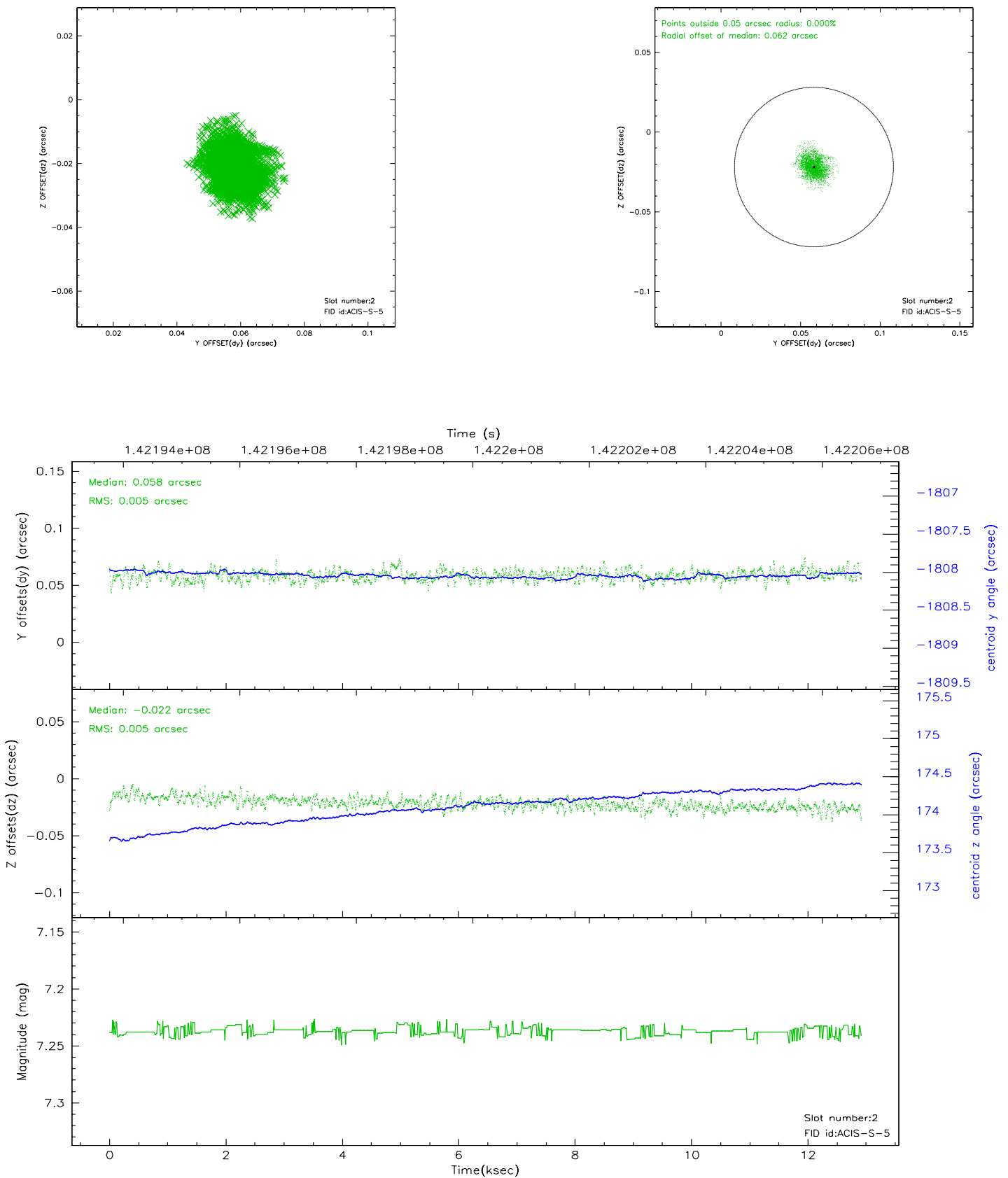
### 2.5.1 Slot 0



## 2.5.2 Slot 1

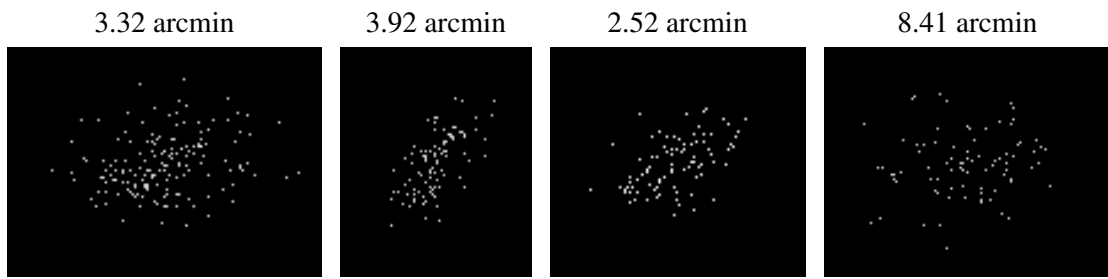


## 2.5.3 Slot 2





### 3 Point Sources



## A Summary

### A.1 Status

V&V Scientist	Beth Sundheim
V&V Date (YYYY-MM-DD)	2006.09.22
V&V Edition	1
V&V Disposition and Status	OK
V&V Charge Time	12.914

### A.2 Comments