

V&V Reference Report

L2 ASCDS Version : 7.6.8.1

Observation 3364 - L2 Version 001
Chandra X-Ray Center

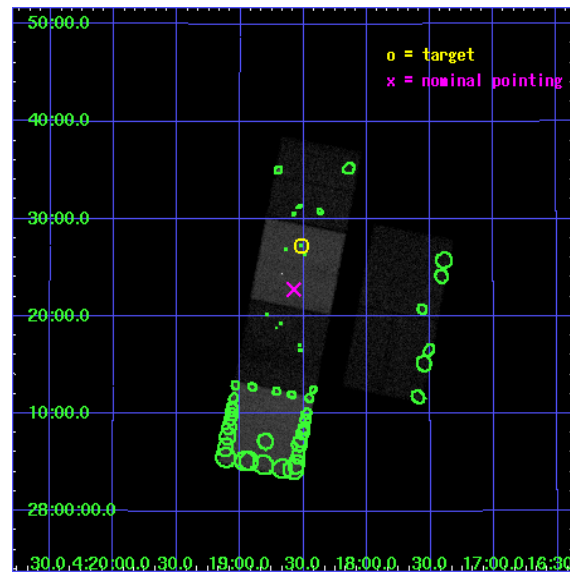
L2 Processing Date : Sep 6 2006

Contents

1	Front	2
2	OBI	3
2.1	OBI	3
2.1.1	Images	3
2.1.2	Bias	3
2.1.3	Parameters	4
2.1.4	Events	4
2.2	Compared Parameters	5
2.3	Aspect	6
2.4	Star Slots	9
2.4.1	Slot 3	9
2.4.2	Slot 4	10
2.4.3	Slot 5	11
2.4.4	Slot 6	12
2.4.5	Slot 7	13
2.5	FID Slots	14
2.5.1	Slot 0	14
2.5.2	Slot 1	15
2.5.3	Slot 2	16
3	Point Sources	17
A	Summary	18
A.1	Status	18
A.2	Comments	18

1 Front

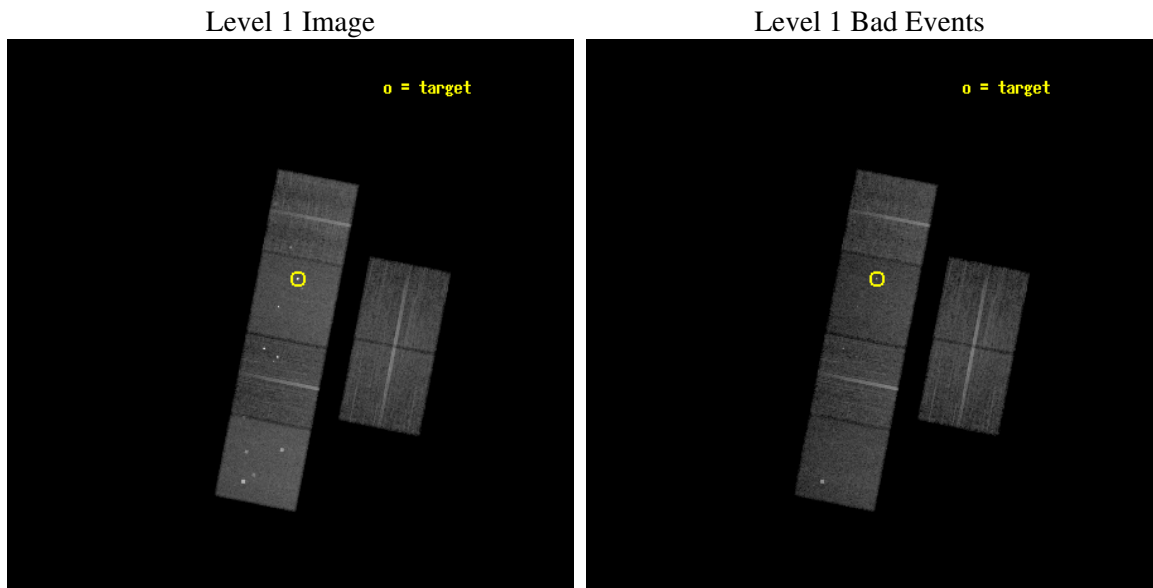
seq_num	200191
obs_id	3364
title	ORIGIN OF THE X-RAY EMISSION OF THE PREMAIN SEQUENCE STAR V 410 TAU
observer	Dr. Peter Predehl
object	V 410 TAU
dtcycle	0
cycle	P
ra_targ	64.629583
dec_targ	28.454444
ra_nom	64.644078714545
dec_nom	28.379790990339
roll_nom	281.11661882484
revision	3
ontime	17961.600016728
livetime	17734.159422139
ontime2	17961.600016728
ontime3	17961.600016728
ontime5	17961.600016728
ontime6	17961.600016728
ontime7	17961.600016728
ontime8	17961.600016728
l2events	192985



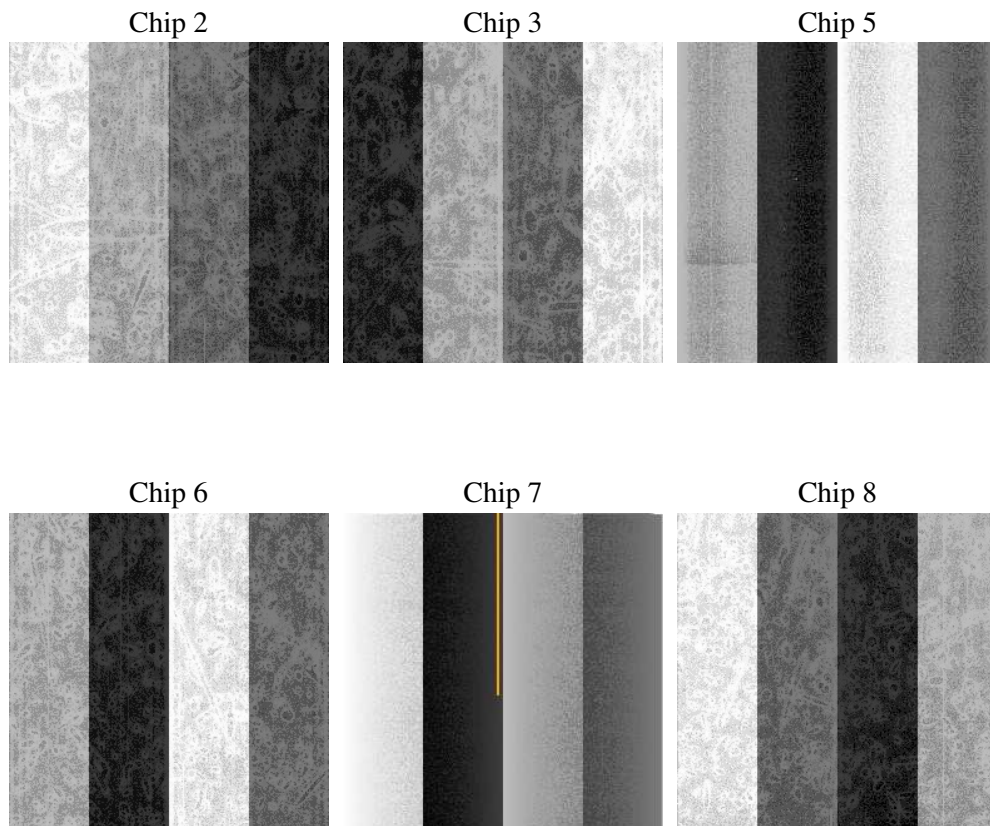
2 OBI

2.1 OBI

2.1.1 Images



2.1.2 Bias



2.1.3 Parameters

obi_num	3
ascdsver	7.6.8.1
caldsver	3.2.3
date	2006-09-06T11:59:52
revision	3

sched_exp_time	18000.000000
ontime	17964.859026909
ontime2	17964.858996987
ontime3	17964.858996987
ontime5	17964.859026909
ontime6	17964.858996987
ontime7	17964.859026909
ontime8	17964.858996987
l1events	872734

2.1.4 Events

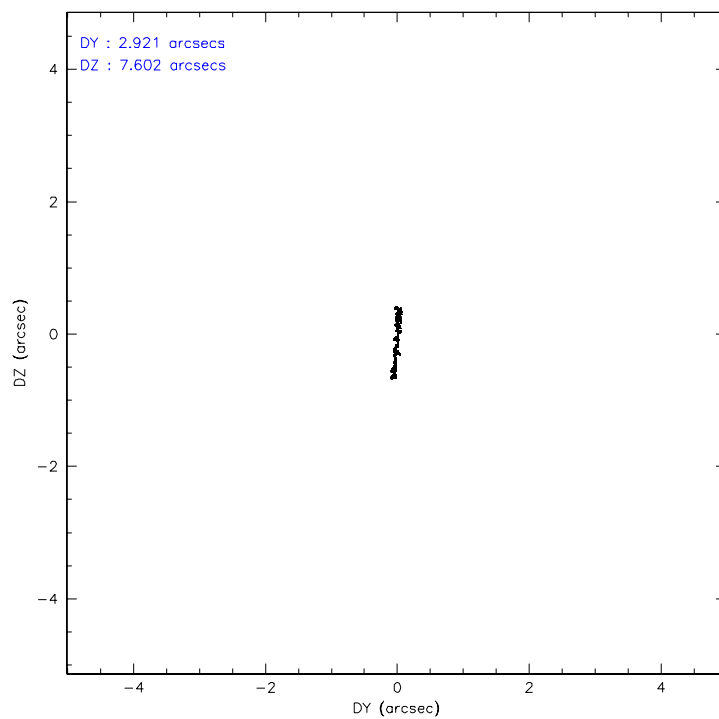
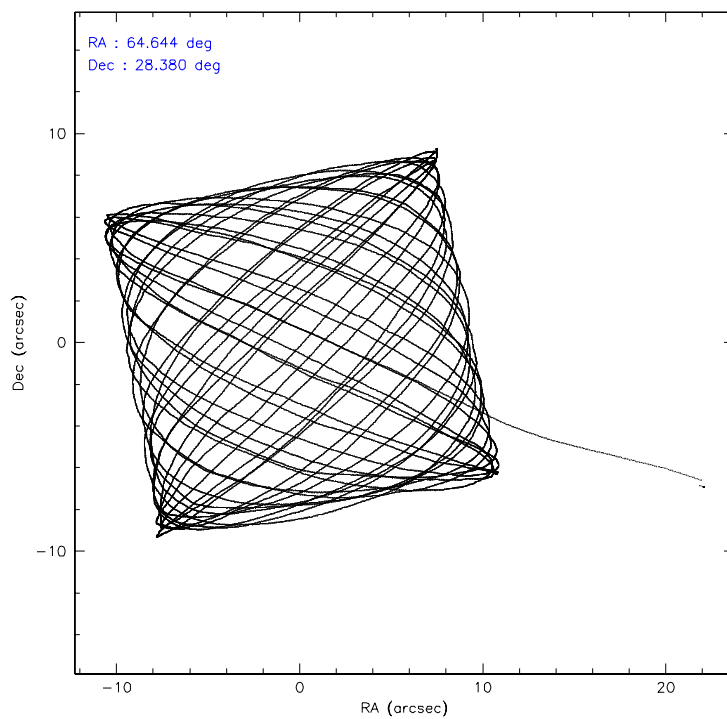
	ccd 2	ccd 3	ccd 5	ccd 6	ccd 7	ccd 8
level 1 events	124595	121383	176089	131081	165612	153974
rejected events	110875	107936	97613	110752	97404	120475
rejected %	88%	88%	55%	84%	58%	78%

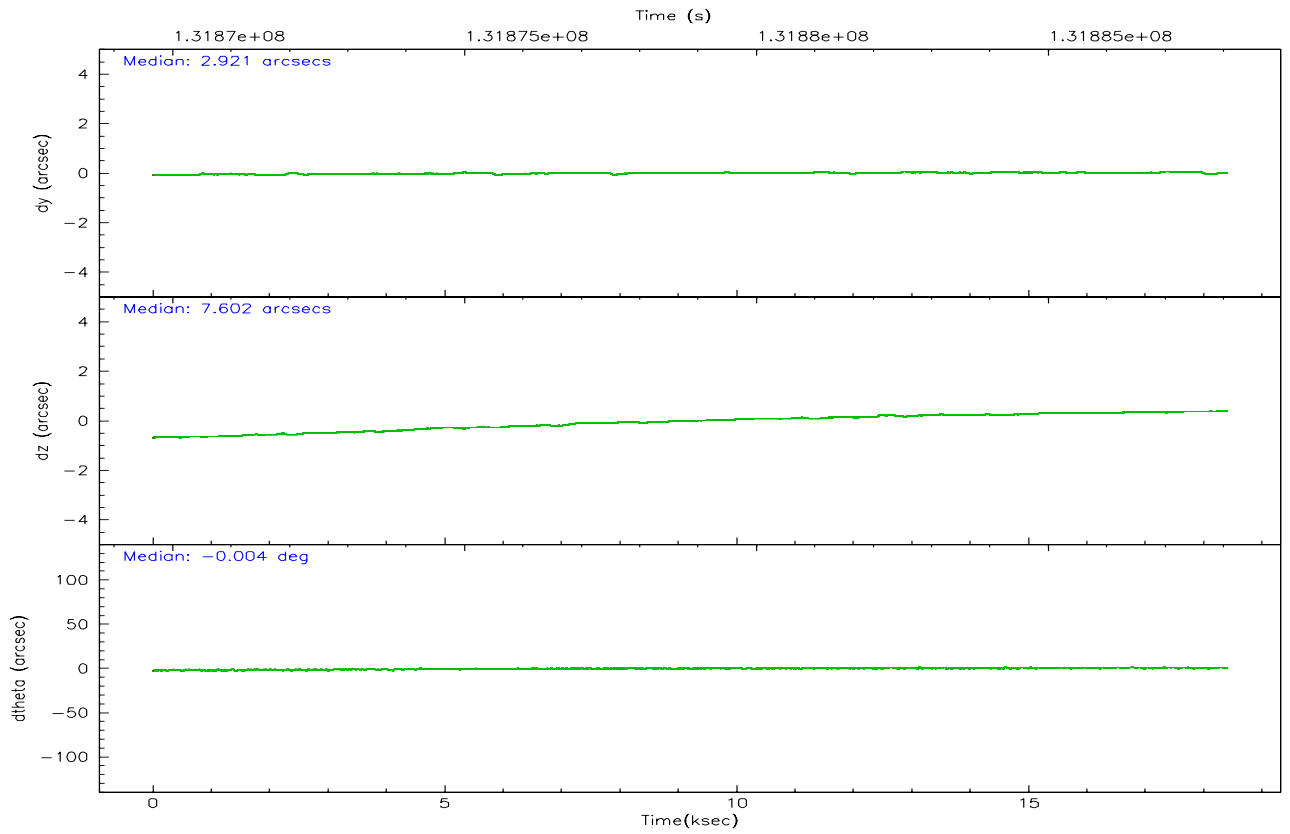
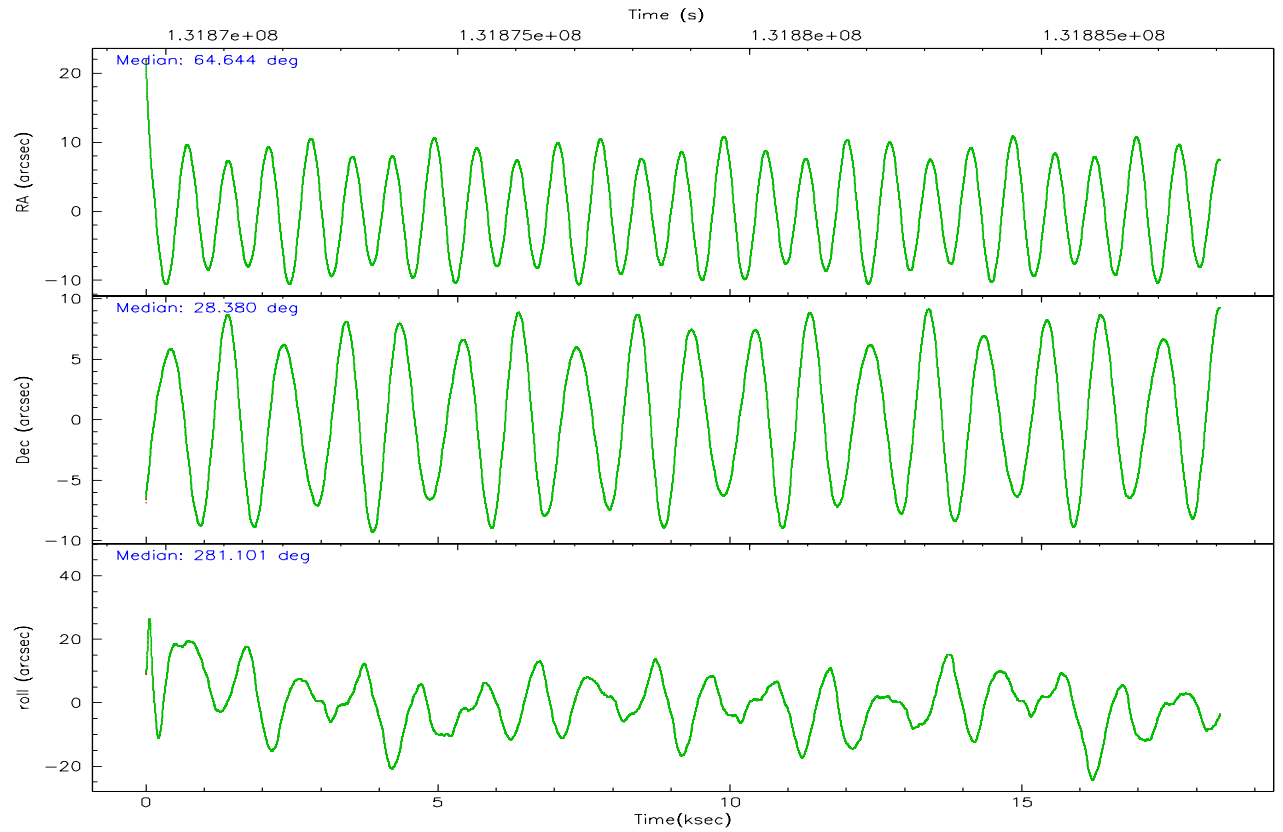
	ccd 2	ccd 3	ccd 5	ccd 6	ccd 7	ccd 8
grade 0 events	5699	5579	8968	10535	5925	10631
	4%	4%	5%	8%	3%	6%
grade 1 events	83	45	1823	203	174	107
	0%	0%	1%	0%	0%	0%
grade 2 events	3044	2698	23233	3470	16881	7251
	2%	2%	13%	2%	10%	4%
grade 3 events	1211	1366	1704	1642	4192	3676
	0%	1%	0%	1%	2%	2%
grade 4 events	1248	1287	1633	1644	4001	3351
	1%	1%	0%	1%	2%	2%
grade 5 events	4336	4765	8229	5267	11116	6664
	3%	3%	4%	4%	6%	4%
grade 6 events	2520	2518	42944	3039	37221	8596
	2%	2%	24%	2%	22%	5%
grade 7 events	106454	103125	87555	105281	86102	113698
	85%	84%	49%	80%	51%	73%

2.2 Compared Parameters

Parameter	Planned	Actual	Parameter	Planned	Actual
Instrument	ACIS	ACIS	Obspar format version number	6	6
Detector	ACIS-235678	ACIS-235678	Obspar file type	PREDICTED	ACTUAL
Grating	NONE	NONE	Obspar update status	NONE	UPDATED
Data mode	FAINT	FAINT	On-chip summing requested	N	N
Observation mode	POINTING	POINTING	Subarray requested	NONE	NONE
Pointing RA	64.623416	64.64407871454526	Alternating exposures requested	N	N
Pointing Dec	28.400089	28.37979099033864	Primary exposure time	0.000000	3.2
Pointing Roll	280.969801	281.1166188248354			
SIM focus pos (mm)	-0.684267	-0.6828225247311905			
SIM defocus (mm)	0	0.001444936568705701			
SIM translation stage pos (mm)	-190.132523	-190.1400660498719			
SIM translation stage offset (mm)	0	0.00754346686406393			
Observation start time	131870067.184000	131868992.51416			
Observation start date	2002-03-07T06:33:23	2002-03-07T06:16:32			
Observation end time	131888067.184000	131888724.78996			
Observation end date	2002-03-07T11:33:23	2002-03-07T11:45:24			
Read mode	TIMED	TIMED			

2.3 Aspect



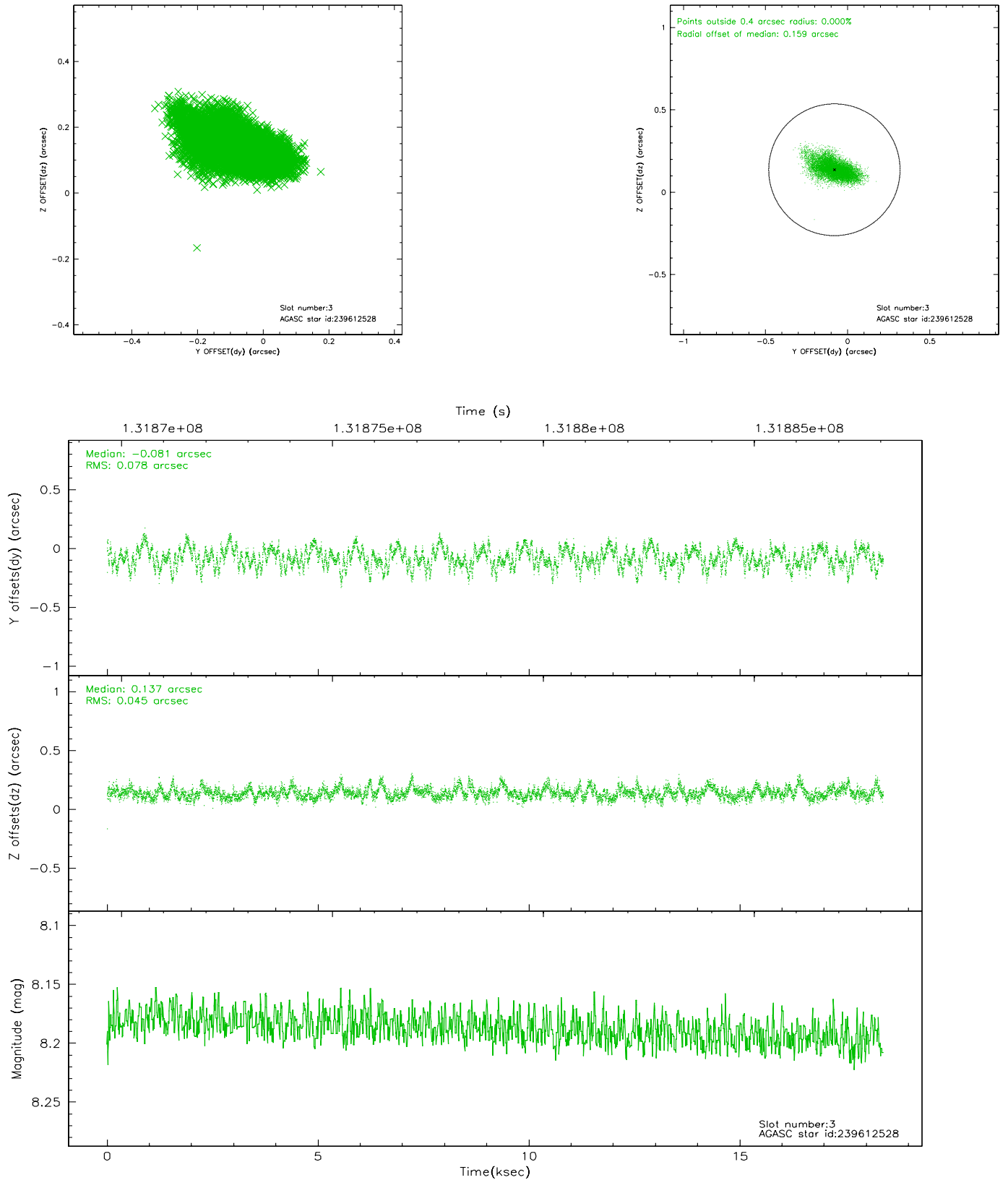


Slot Statistics

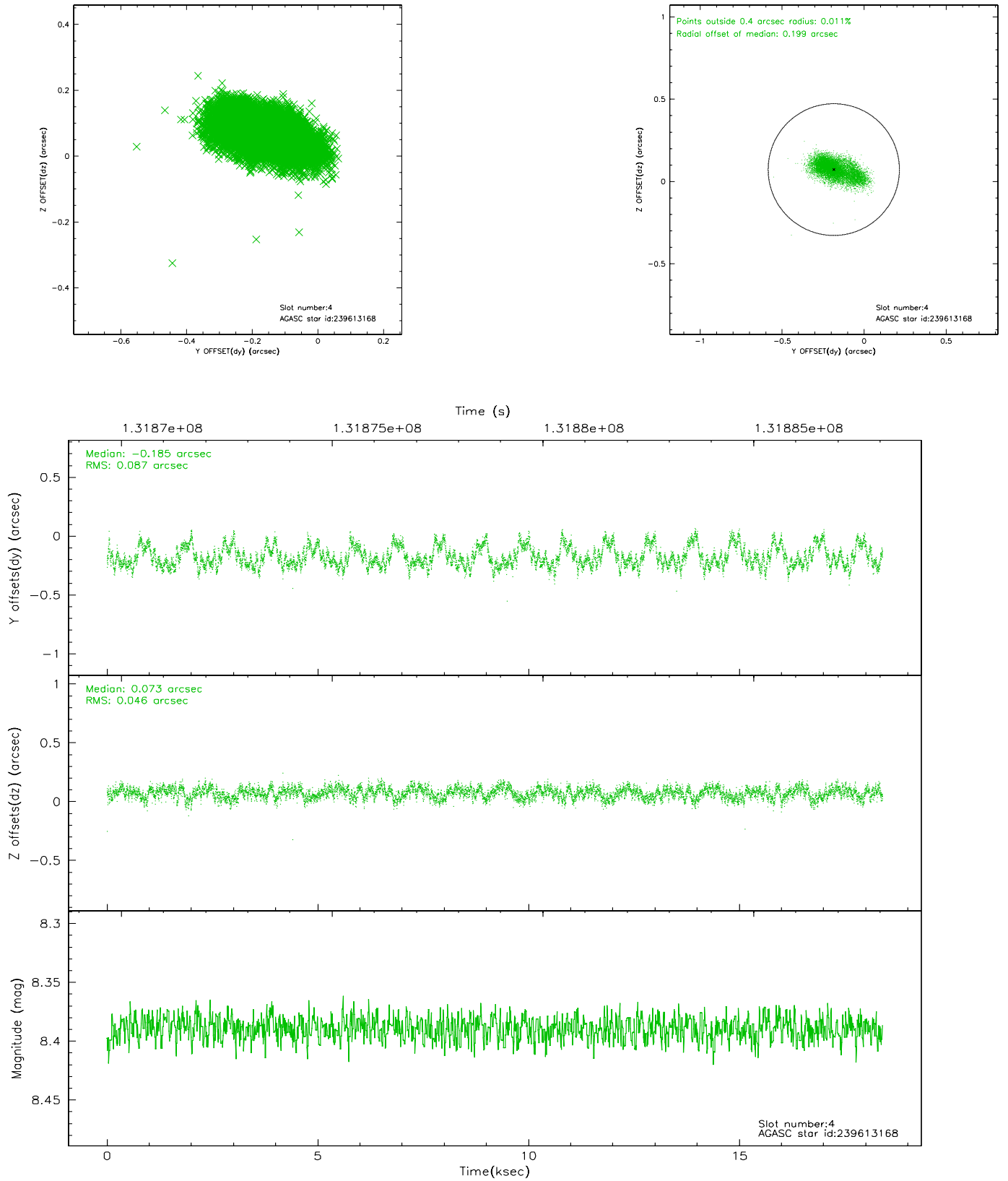
slot	status	id	mag	n_pts	med_dy	med_dz	dr1	dr2	ra	dec	mean_y	mean_z
0	FID	ACIS-S-2	7.11	4488	0.004	0.025	0.009	0.015	0.000000	0.000000	-755.55	-1728.69
1	FID	ACIS-S-4	7.20	4488	-0.081	-0.008	0.005	0.009	0.000000	0.000000	2157.54	179.53
2	FID	ACIS-S-5	7.24	4488	0.046	-0.007	0.009	0.015	0.000000	0.000000	-1808.07	173.45
3	GUIDE	239612528	8.19	8976	-0.081	0.137	0.094	0.162	65.157445	28.892017	-1423.35	1989.86
4	GUIDE	239613168	8.39	8976	-0.185	0.073	0.103	0.179	65.055525	28.814853	-1210.44	1622.57
5	GUIDE	238958824	9.77	8945	0.290	-0.138	0.125	0.198	64.737810	27.958818	1628.14	55.43
6	GUIDE	239468608	10.60	8864	0.025	-0.060	0.284	0.459	64.629591	28.454470	-189.12	56.27
7	GUIDE	239602936	8.79	8973	-0.022	-0.012	0.092	0.148	65.403432	28.416154	403.85	2437.09

2.4 Star Slots

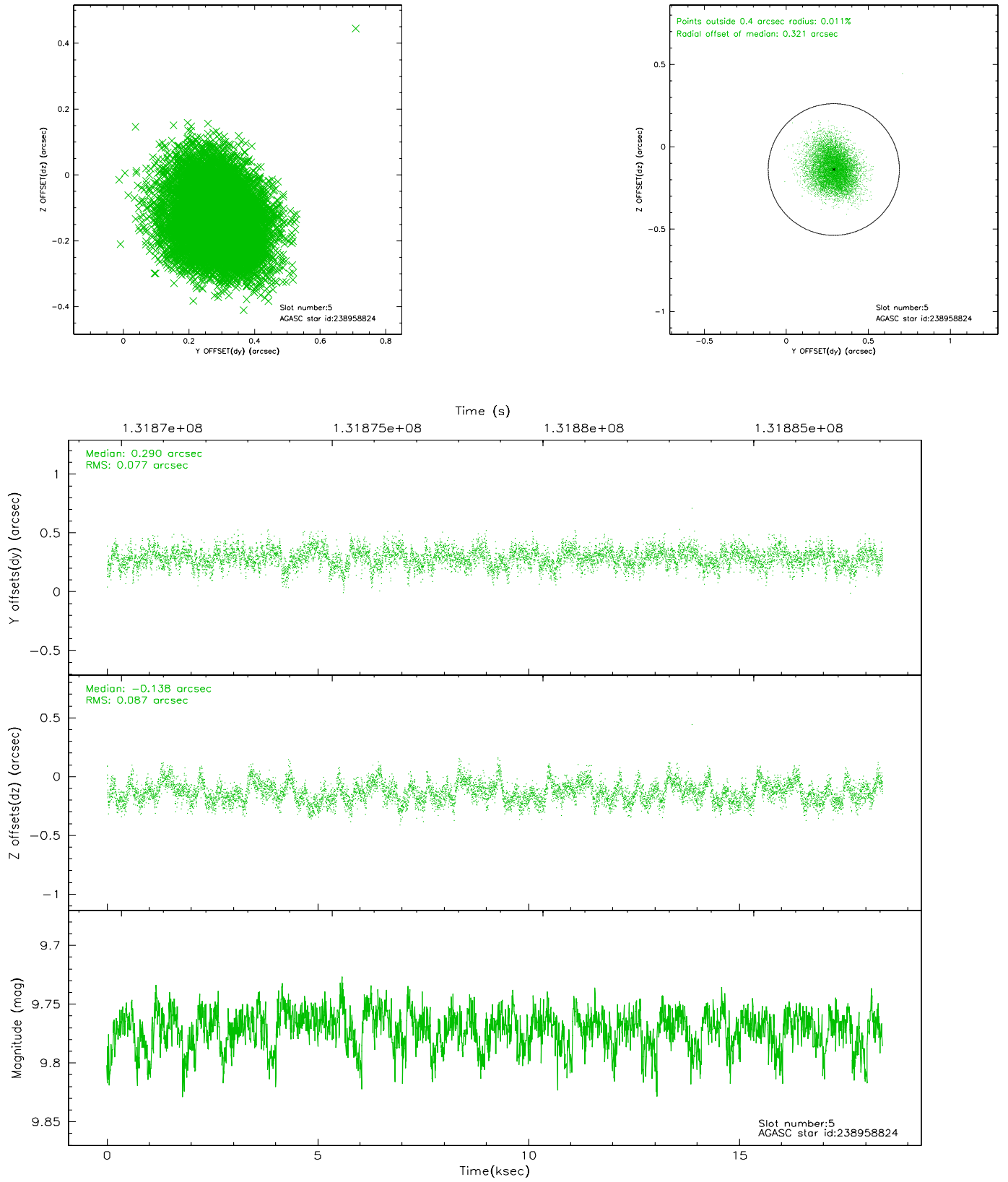
2.4.1 Slot 3



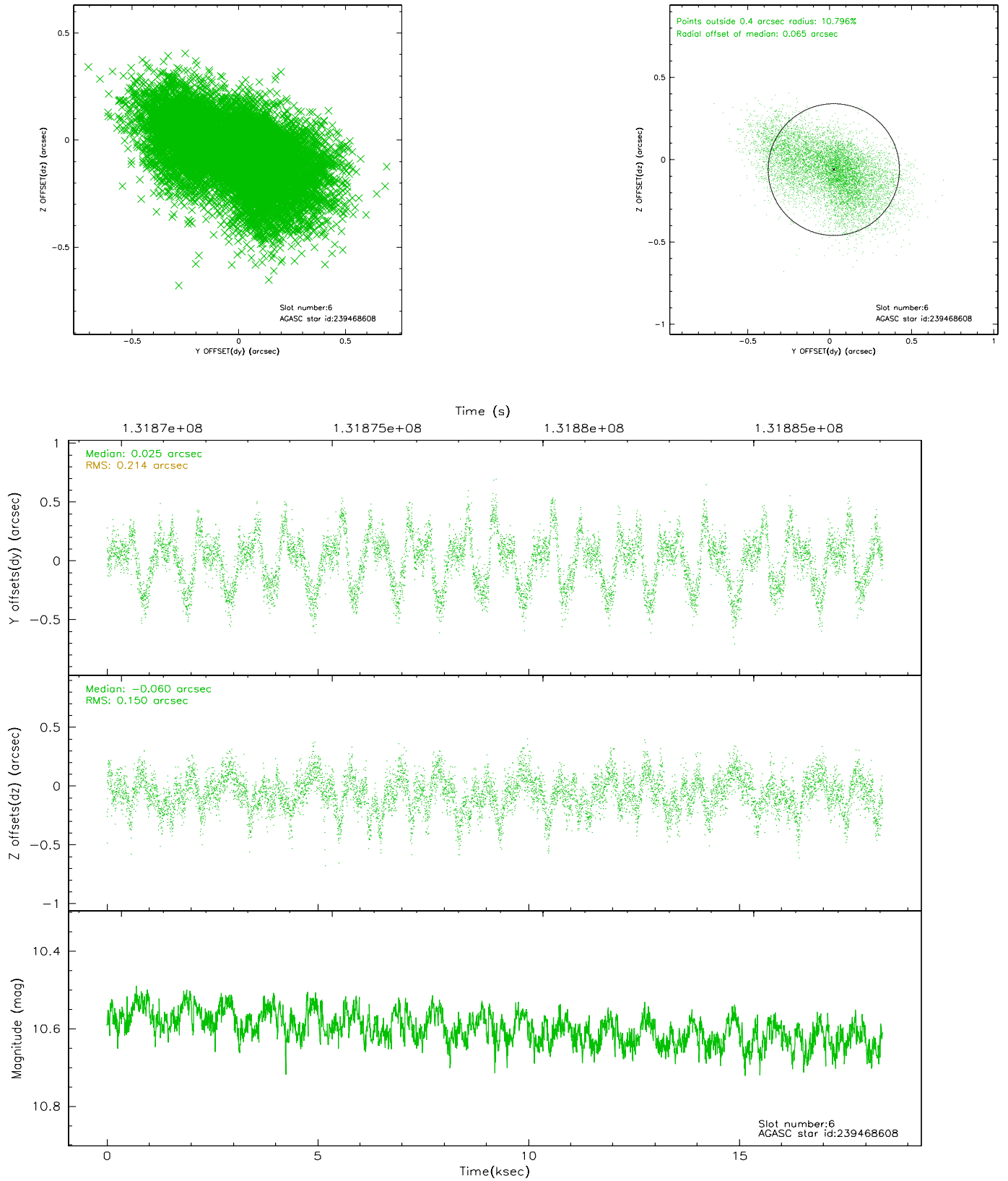
2.4.2 Slot 4



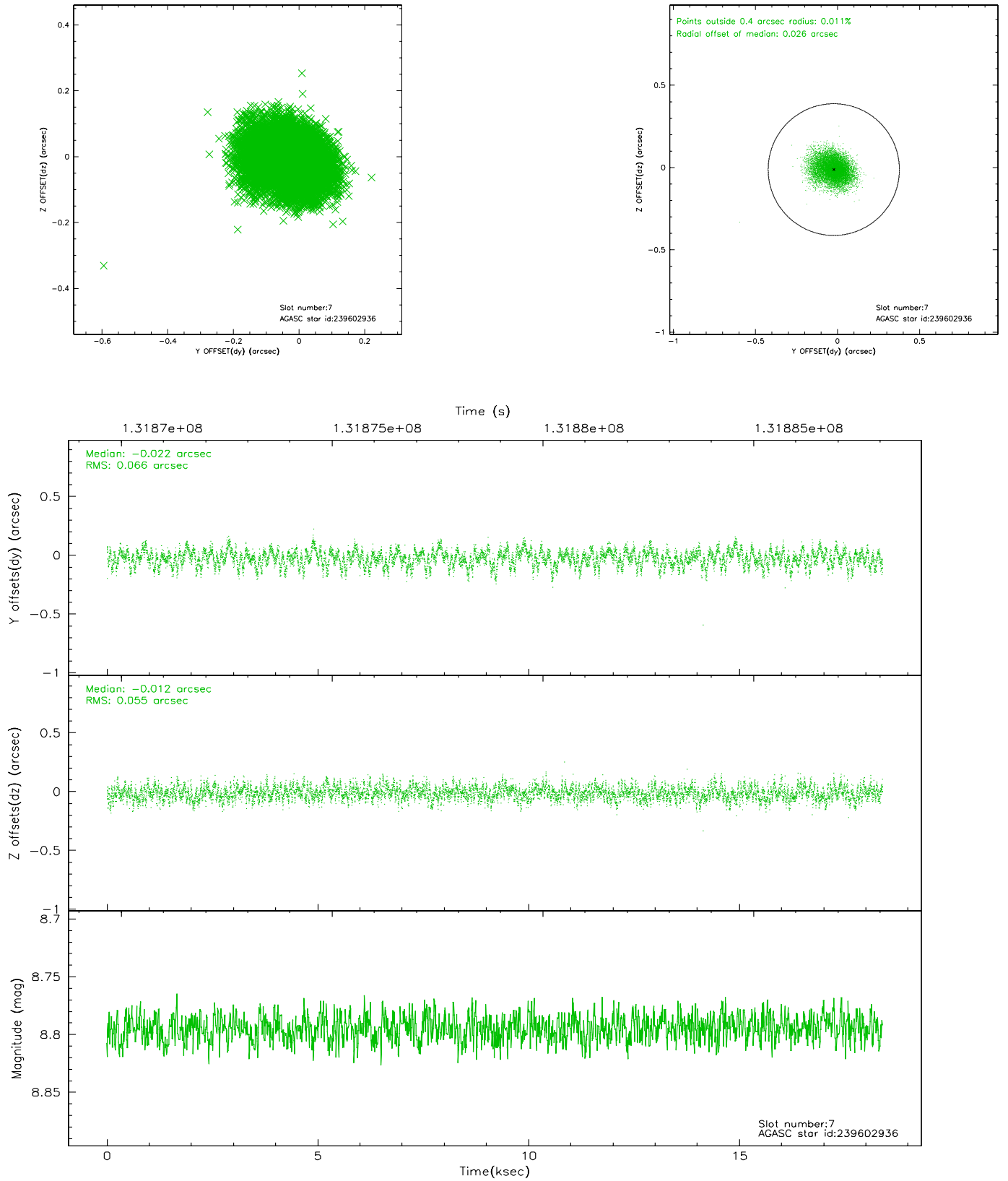
2.4.3 Slot 5



2.4.4 Slot 6

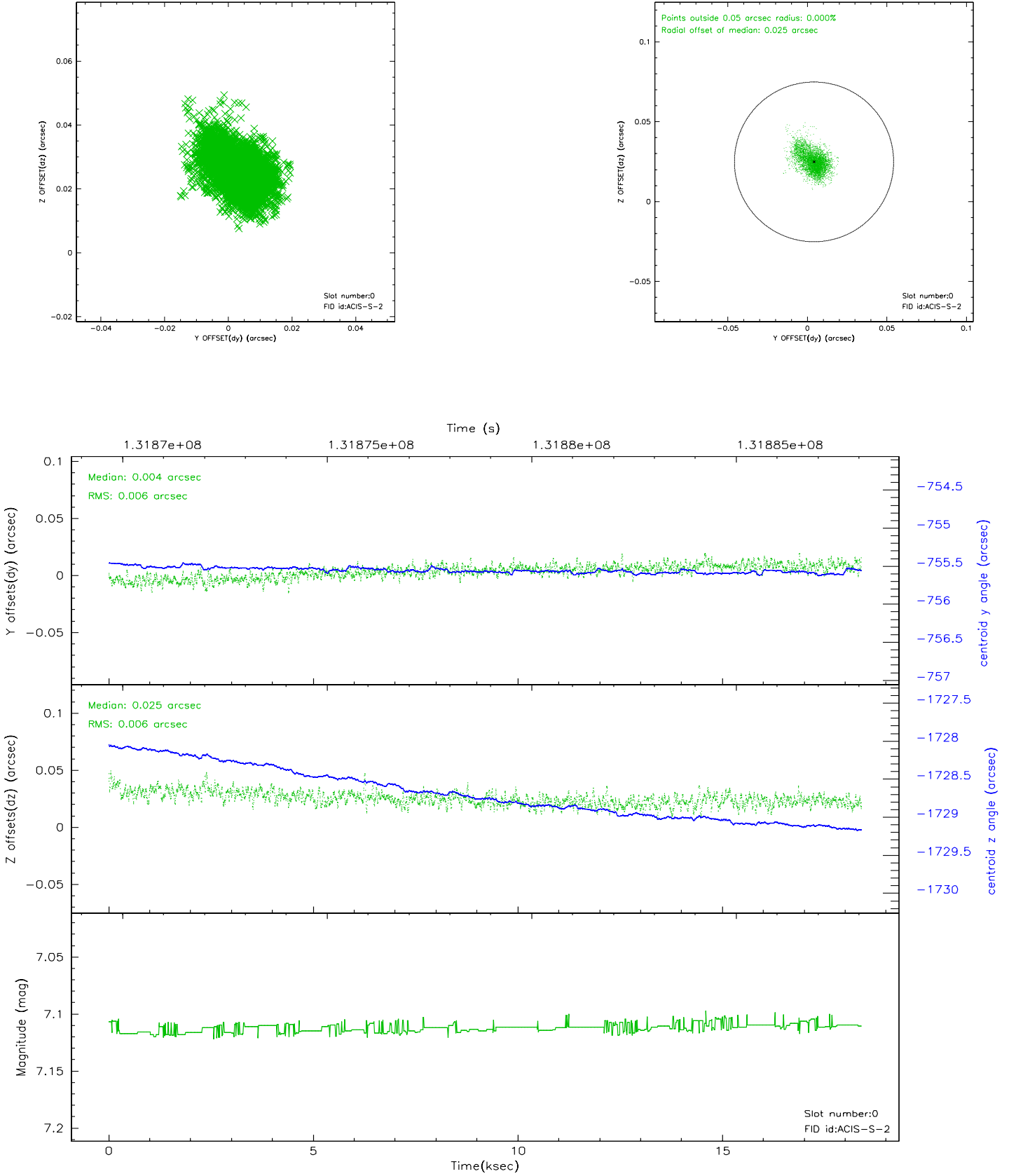


2.4.5 Slot 7

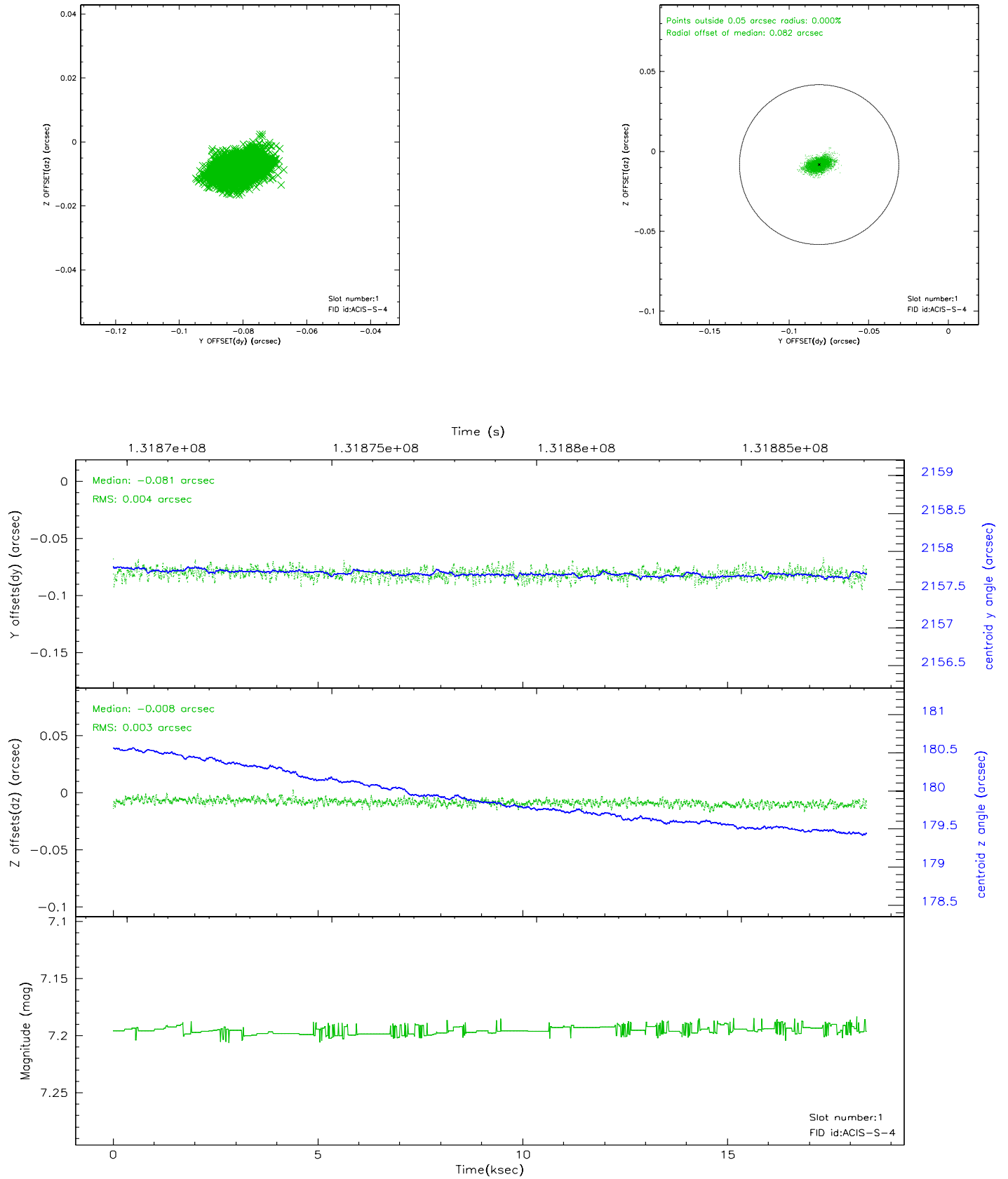


2.5 FID Slots

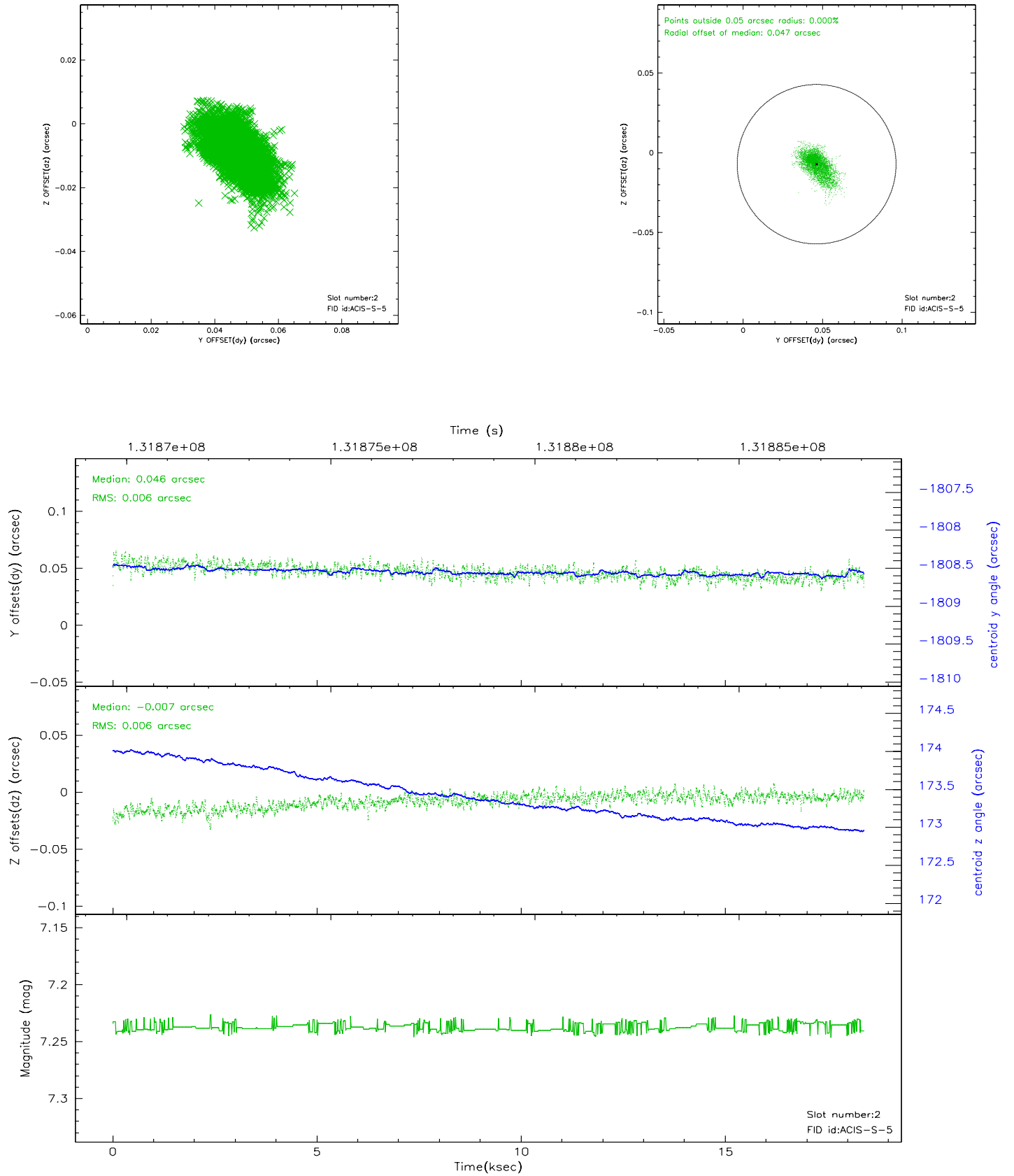
2.5.1 Slot 0



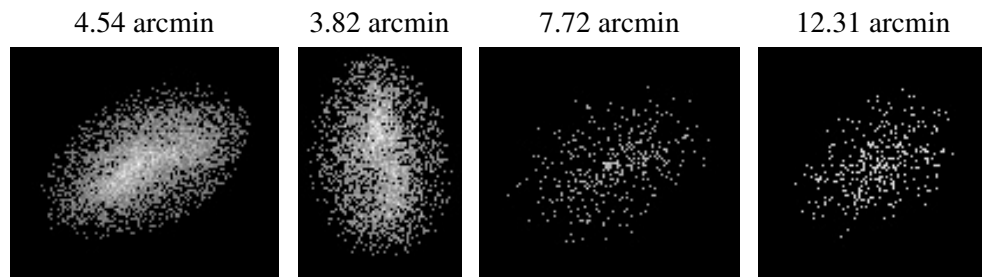
2.5.2 Slot 1



2.5.3 Slot 2



3 Point Sources



A Summary

A.1 Status

V&V Scientist	Beth Sundheim
V&V Date (YYYY-MM-DD)	2006.09.06
V&V Edition	1
V&V Disposition and Status	OK
V&V Charge Time	17.961

A.2 Comments