

V&V Reference Report

L2 ASCDS Version : 7.6.9

Observation 2581 - L2 Version 001
Chandra X-Ray Center

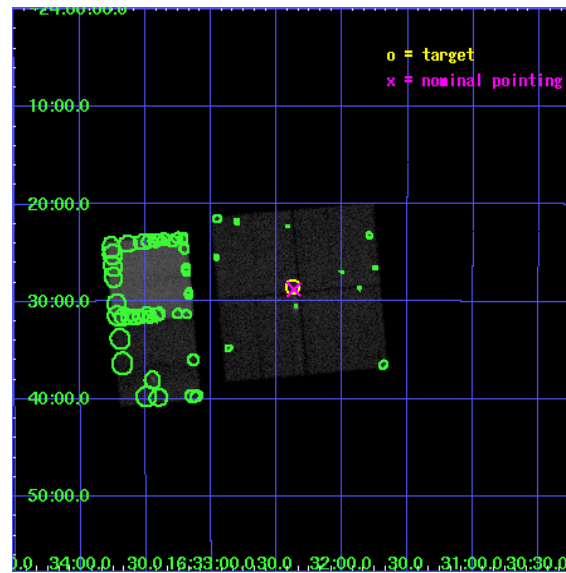
L2 Processing Date : Sep 19 2006

Contents

1	Front	2
2	OBI	3
2.1	OBI	3
2.1.1	Images	3
2.1.2	Bias	3
2.1.3	Parameters	4
2.1.4	Events	4
2.2	Compared Parameters	5
2.3	Aspect	6
2.4	Star Slots	9
2.4.1	Slot 3	9
2.4.2	Slot 4	10
2.4.3	Slot 5	11
2.4.4	Slot 6	12
2.4.5	Slot 7	13
2.5	FID Slots	14
2.5.1	Slot 0	14
2.5.2	Slot 1	15
2.5.3	Slot 2	16
3	Point Sources	17
A	Summary	18
A.1	Status	18
A.2	Comments	18

1 Front

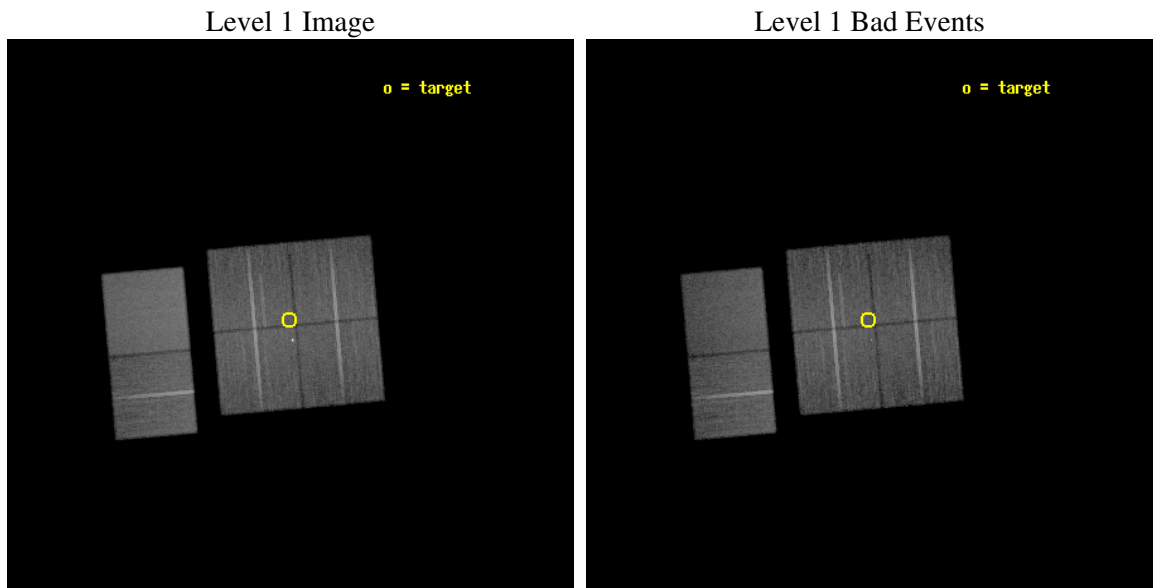
seq_num	200189
obs_id	2581
title	X-RAY INDUCED CHEMISTRY IN PROTOSTARS
observer	DR. THIERRY MONTMERLE
object	IRAS16293
dtcycle	0
cycle	P
ra_targ	248.094583
dec_targ	-24.475556
ra_nom	248.09217349489
dec_nom	-24.479686003695
roll_nom	264.94286225442
revision	2
ontime	30131.199887753
livetime	29749.660491943
ontime0	30131.199887753
ontime1	30124.717927307
ontime2	30127.958917469
ontime3	30131.199887753
ontime6	30131.199887753
ontime7	30131.199887753
l2events	189314



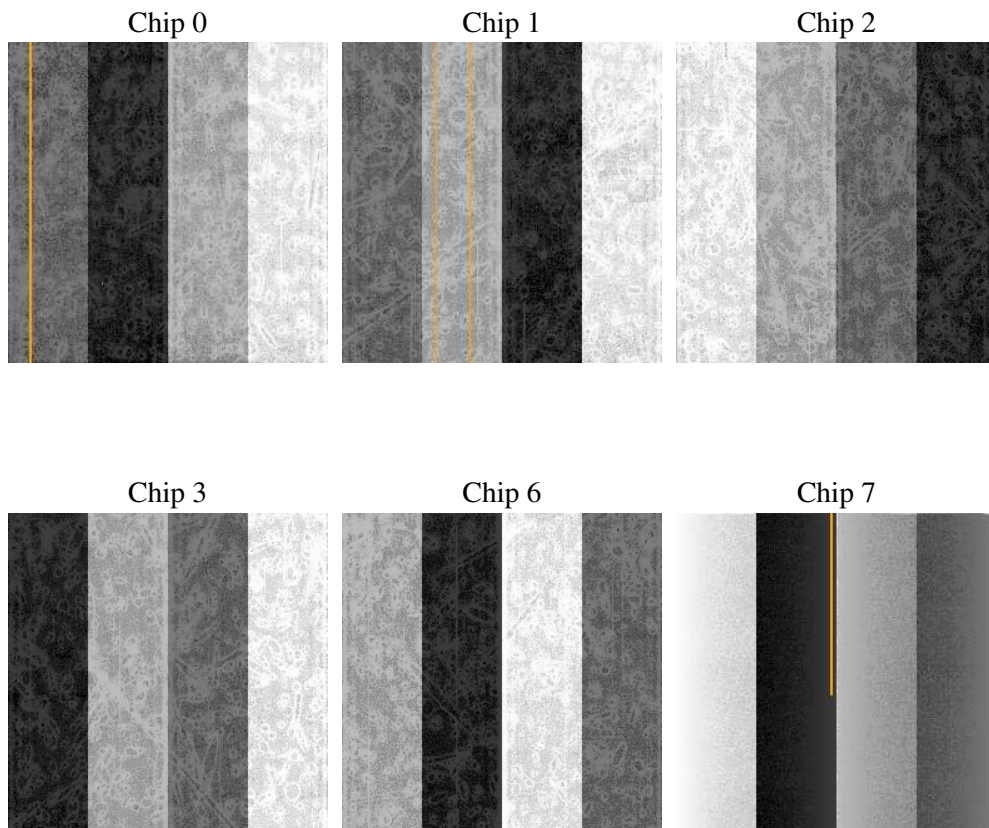
2 OBI

2.1 OBI

2.1.1 Images



2.1.2 Bias



2.1.3 Parameters

obi_num	0
ascdsver	7.6.9
caldsver	3.2.3
date	2006-09-19T13:31:57
revision	2

sched_exp_time	30000.000000
ontime	30685.829949409
ontime0	30685.829969347
ontime1	30682.589028984
ontime2	30669.62481913
ontime3	30685.829949409
ontime6	30685.829949409
ontime7	30786.302209377
l1events	1193699

2.1.4 Events

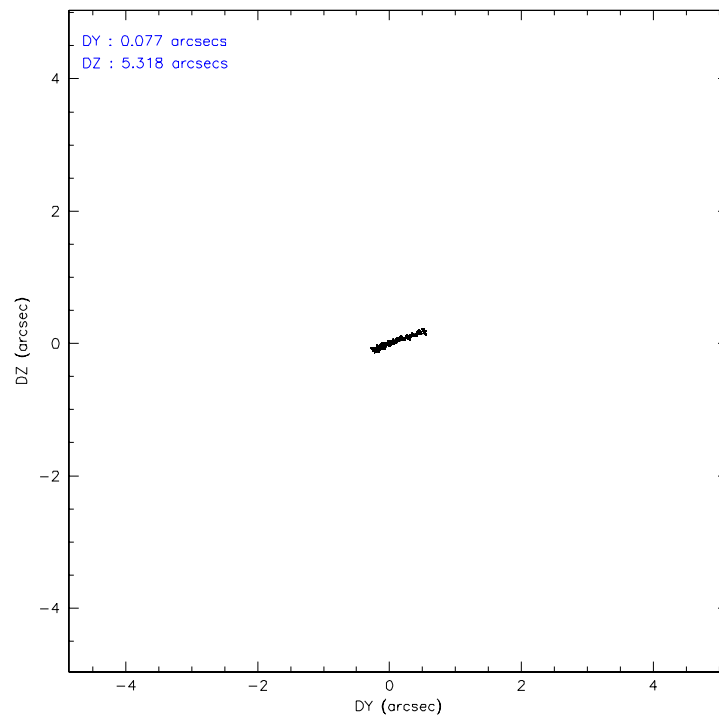
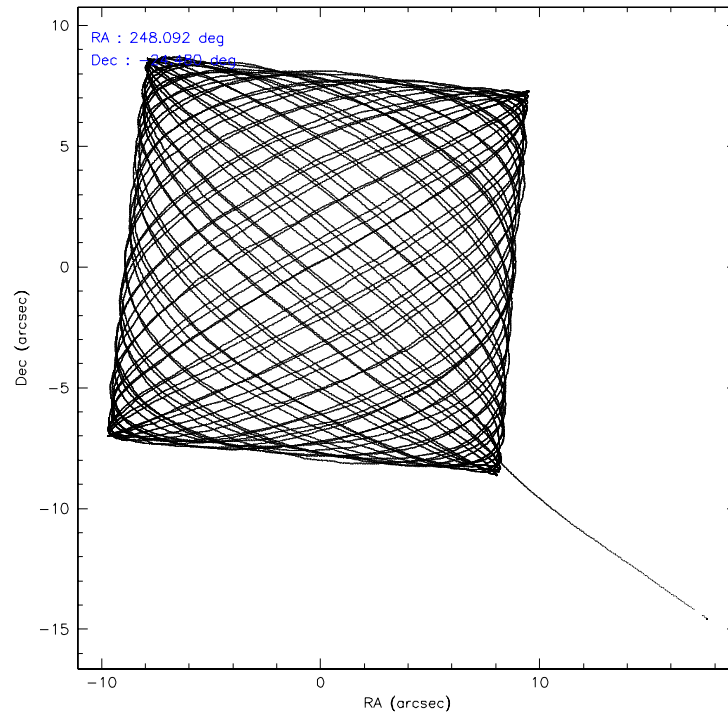
	ccd 0	ccd 1	ccd 2	ccd 3	ccd 6	ccd 7
level 1 events	175922	180225	198998	186297	198909	253348
rejected events	153962	156987	173496	164943	176989	160522
rejected %	87%	87%	87%	88%	88%	63%

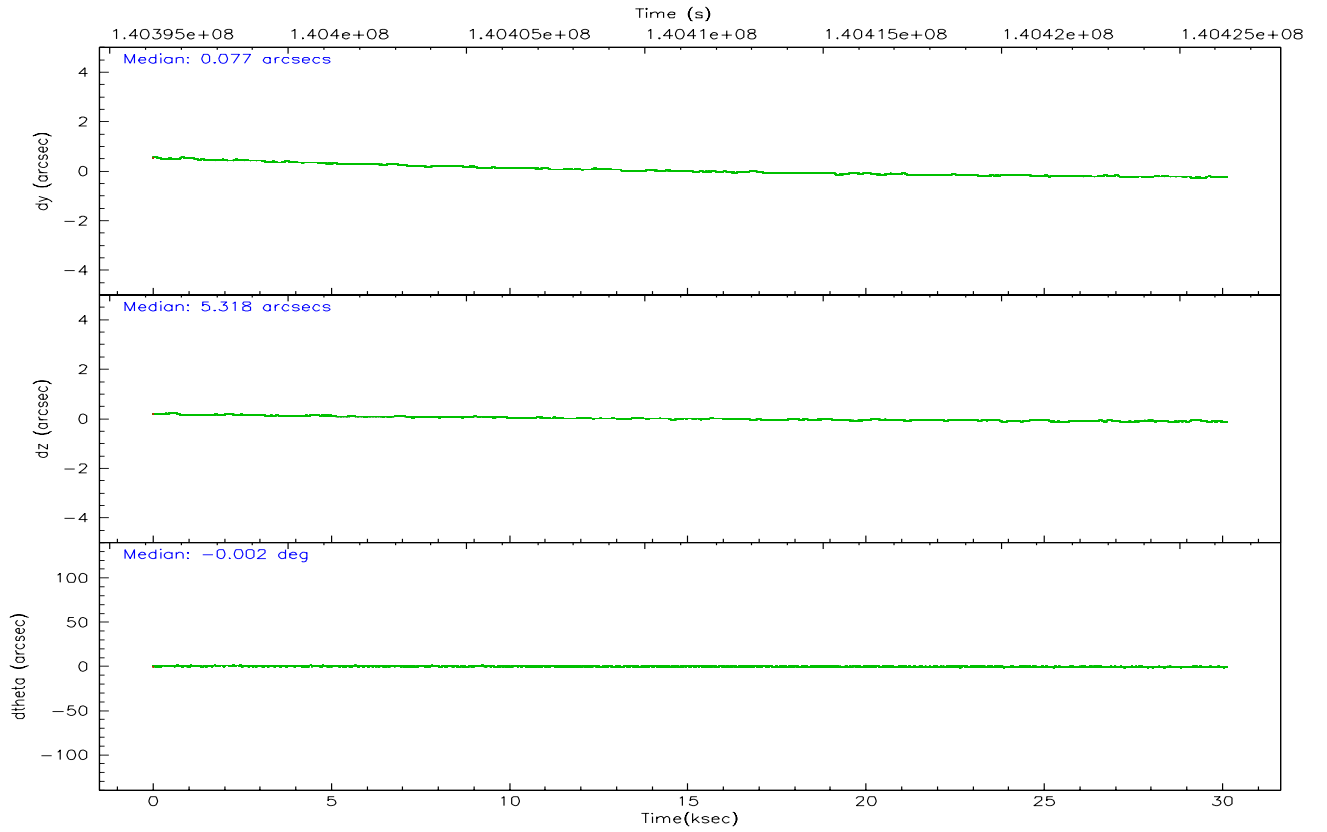
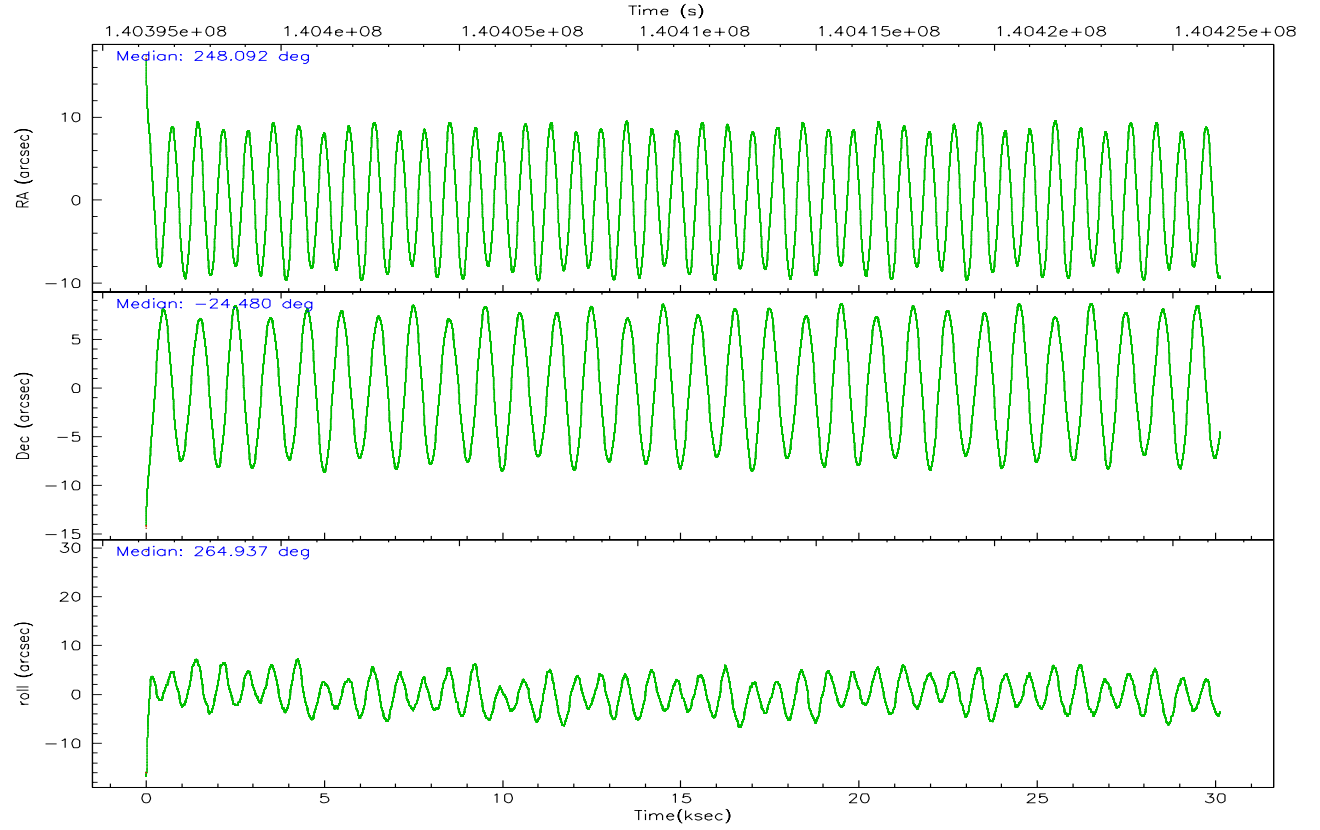
	ccd 0	ccd 1	ccd 2	ccd 3	ccd 6	ccd 7
grade 0 events	9262	9285	12067	8988	8680	5013
	5%	5%	6%	4%	4%	1%
grade 1 events	97	86	268	111	95	173
	0%	0%	0%	0%	0%	0%
grade 2 events	4885	4956	5332	4480	4743	23177
	2%	2%	2%	2%	2%	9%
grade 3 events	2190	2510	2220	2103	2152	4871
	1%	1%	1%	1%	1%	1%
grade 4 events	2016	2410	2273	2112	2162	4530
	1%	1%	1%	1%	1%	1%
grade 5 events	7174	7952	6949	7684	8809	16819
	4%	4%	3%	4%	4%	6%
grade 6 events	4056	4506	4005	4090	4589	57320
	2%	2%	2%	2%	2%	22%
grade 7 events	146242	148520	165884	156729	167679	141445
	83%	82%	83%	84%	84%	55%

2.2 Compared Parameters

Parameter	Planned	Actual	Parameter	Planned	Actual
Instrument	ACIS	ACIS	Obspar format version number	6	6
Detector	ACIS-012367	ACIS-012367	Obspar file type	PREDICTED	ACTUAL
Grating	NONE	NONE	Obspar update status	NONE	UPDATED
Data mode	FAINT	FAINT	Number of optional ACIS chips dropped	0	0
Observation mode	POINTING	POINTING	On-chip summing requested	N	N
Pointing RA	248.079399	248.0921734948948	Subarray requested	NONE	NONE
Pointing Dec	-24.454870	-24.47968600369494	Alternating exposures requested	N	N
Pointing Roll	264.728890	264.9428622544204	Primary exposure time	0.000000	3.2
SIM focus pos (mm)	-0.782348	-0.7809083437167272			
SIM defocus (mm)	0	0.001439871863259334			
SIM translation stage pos (mm)	-233.592463	-233.5874344608287			
SIM translation stage offset (mm)	0	-0.005018542100998502			
Observation start time	140396341.184000	140394970.02361			
Observation start date	2002-06-13T22:57:57	2002-06-13T22:36:10			
Observation end time	140426341.184000	140427312.36243			
Observation end date	2002-06-14T07:17:57	2002-06-14T07:35:12			
Read mode	TIMED	TIMED			

2.3 Aspect



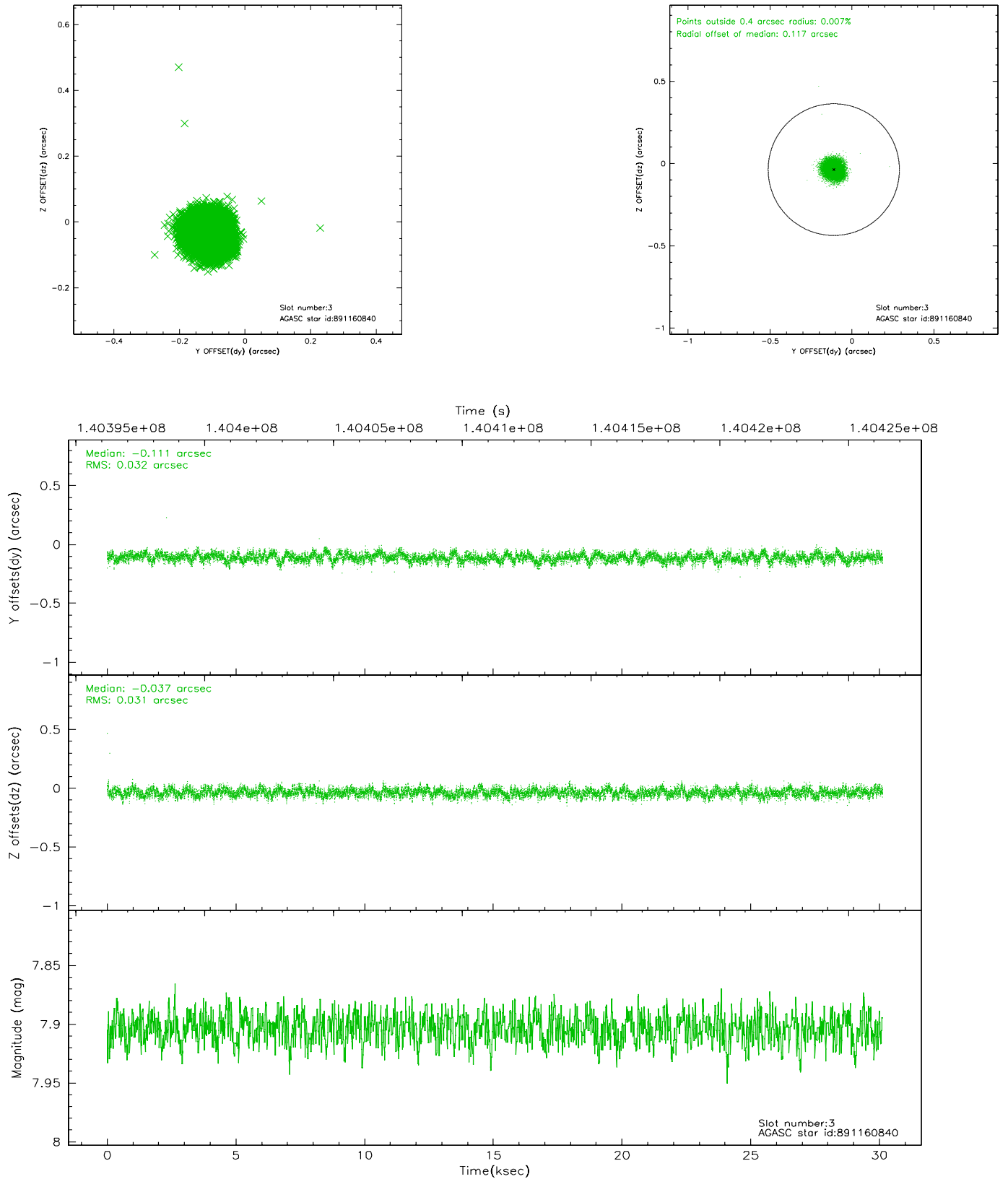


Slot Statistics

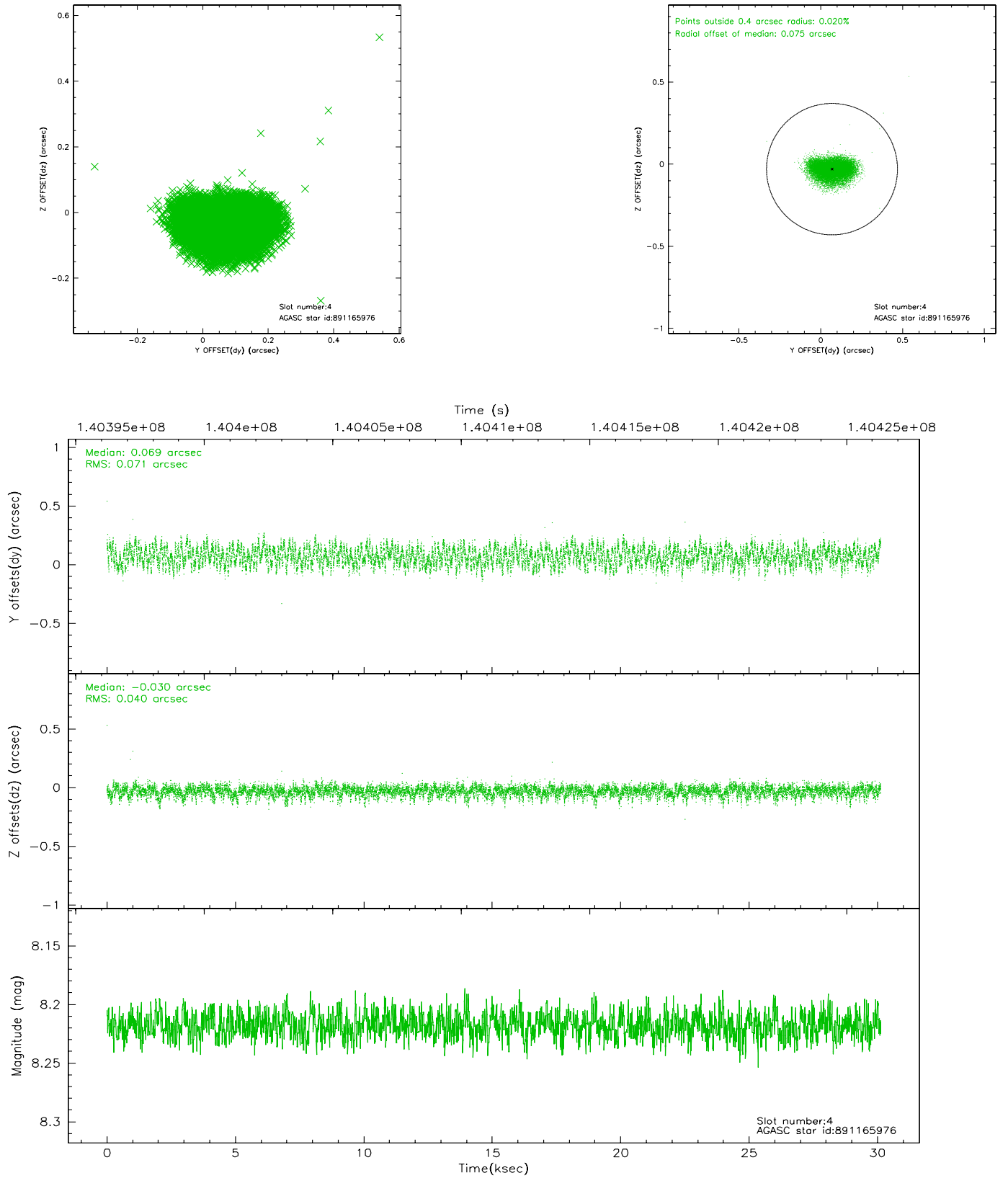
slot	status	id	mag	n_pts	med_dy	med_dz	dr1	dr2	ra	dec	mean_y	mean_z
0	FID	ACIS-I-1	7.25	7348	-0.033	0.048	0.007	0.013	0.000000	0.000000	939.71	-828.63
1	FID	ACIS-I-5	7.23	7349	-0.073	0.015	0.007	0.012	0.000000	0.000000	-1808.39	1068.79
2	FID	ACIS-I-6	7.26	7351	0.015	0.008	0.009	0.014	0.000000	0.000000	405.23	1713.37
3	GUIDE	891160840	7.90	14698	-0.111	-0.037	0.048	0.077	248.551631	-25.001114	1819.64	1715.83
4	GUIDE	891165976	8.22	14699	0.069	-0.030	0.088	0.137	247.477470	-24.979460	2066.27	-1781.33
5	GUIDE	890638488	8.63	14699	-0.031	0.040	0.063	0.101	248.462653	-24.290552	-702.26	1198.34
6	GUIDE	891163512	9.52	14685	0.052	-0.064	0.098	0.158	248.270486	-25.128617	2358.85	843.96
7	GUIDE	891161000	9.57	14688	0.017	0.093	0.098	0.160	247.919483	-24.421185	-71.48	-532.40

2.4 Star Slots

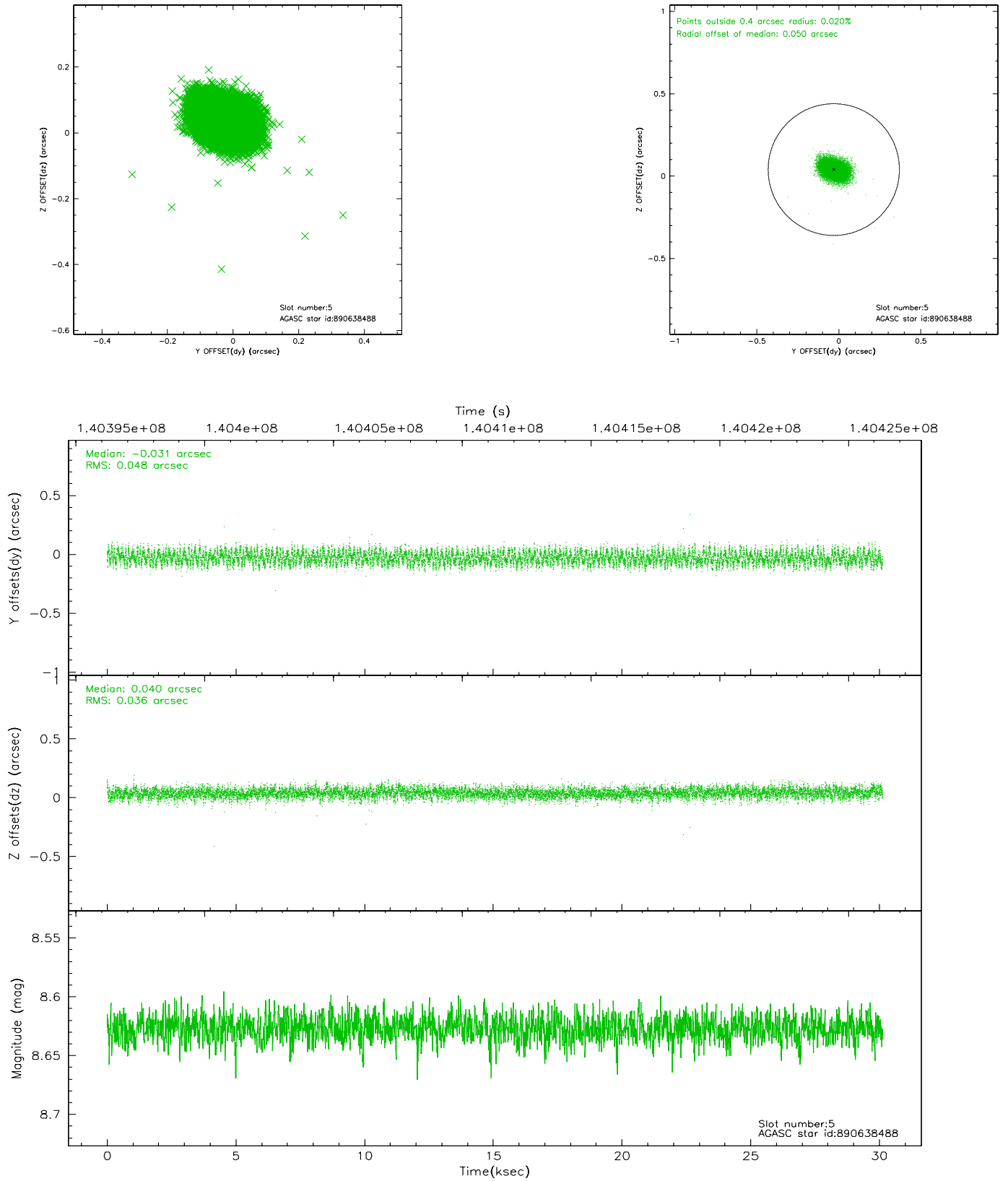
2.4.1 Slot 3



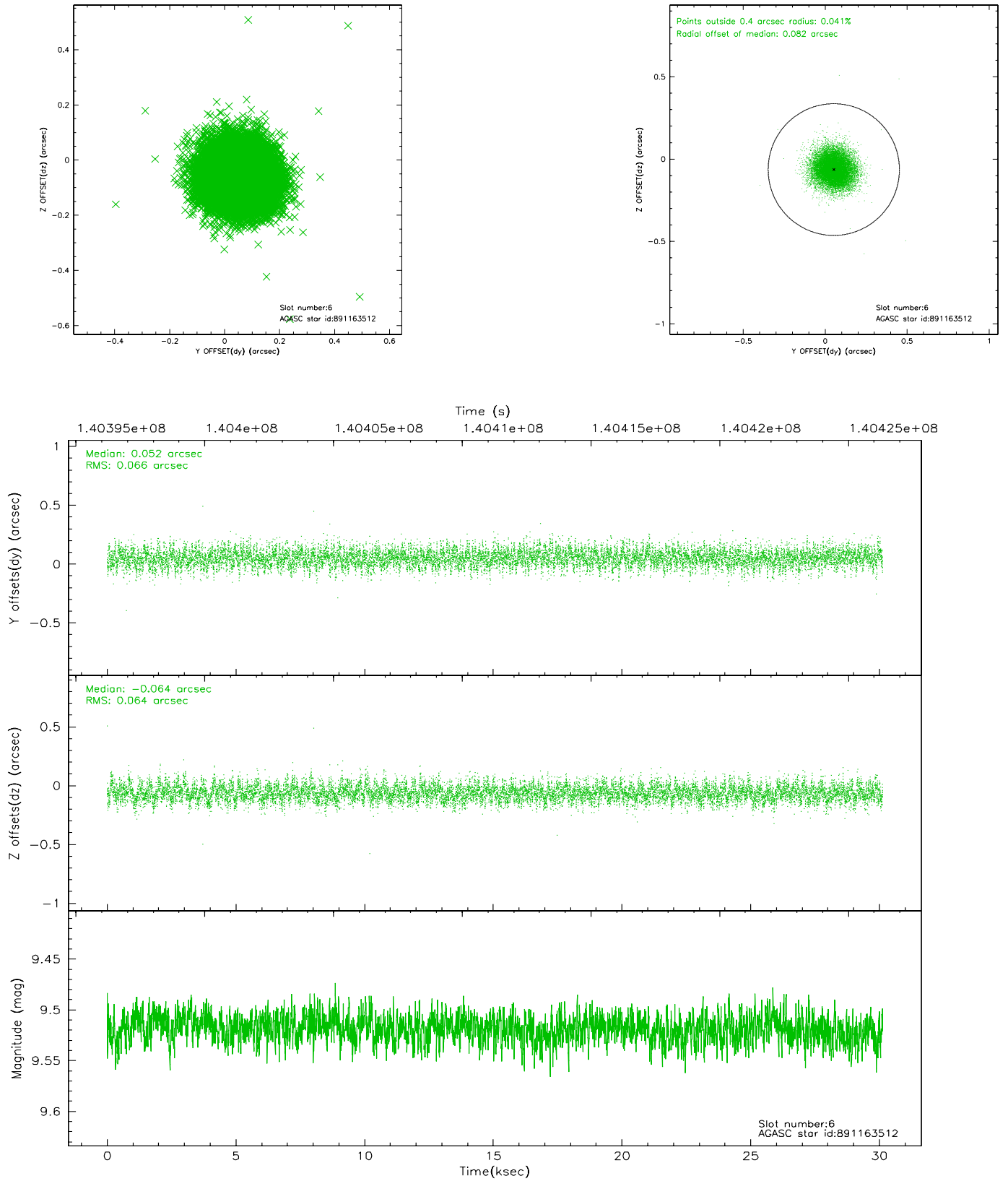
2.4.2 Slot 4



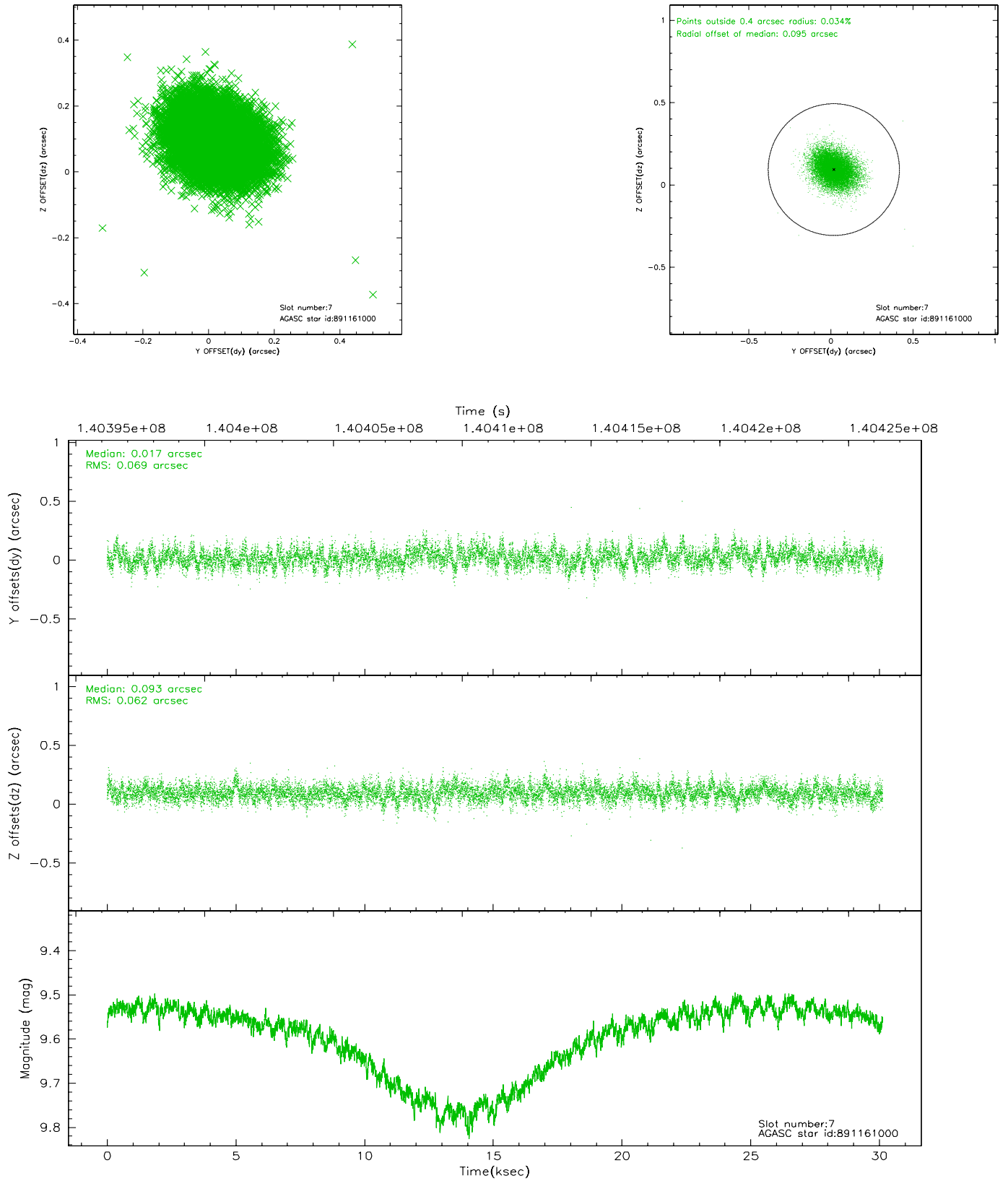
2.4.3 Slot 5



2.4.4 Slot 6

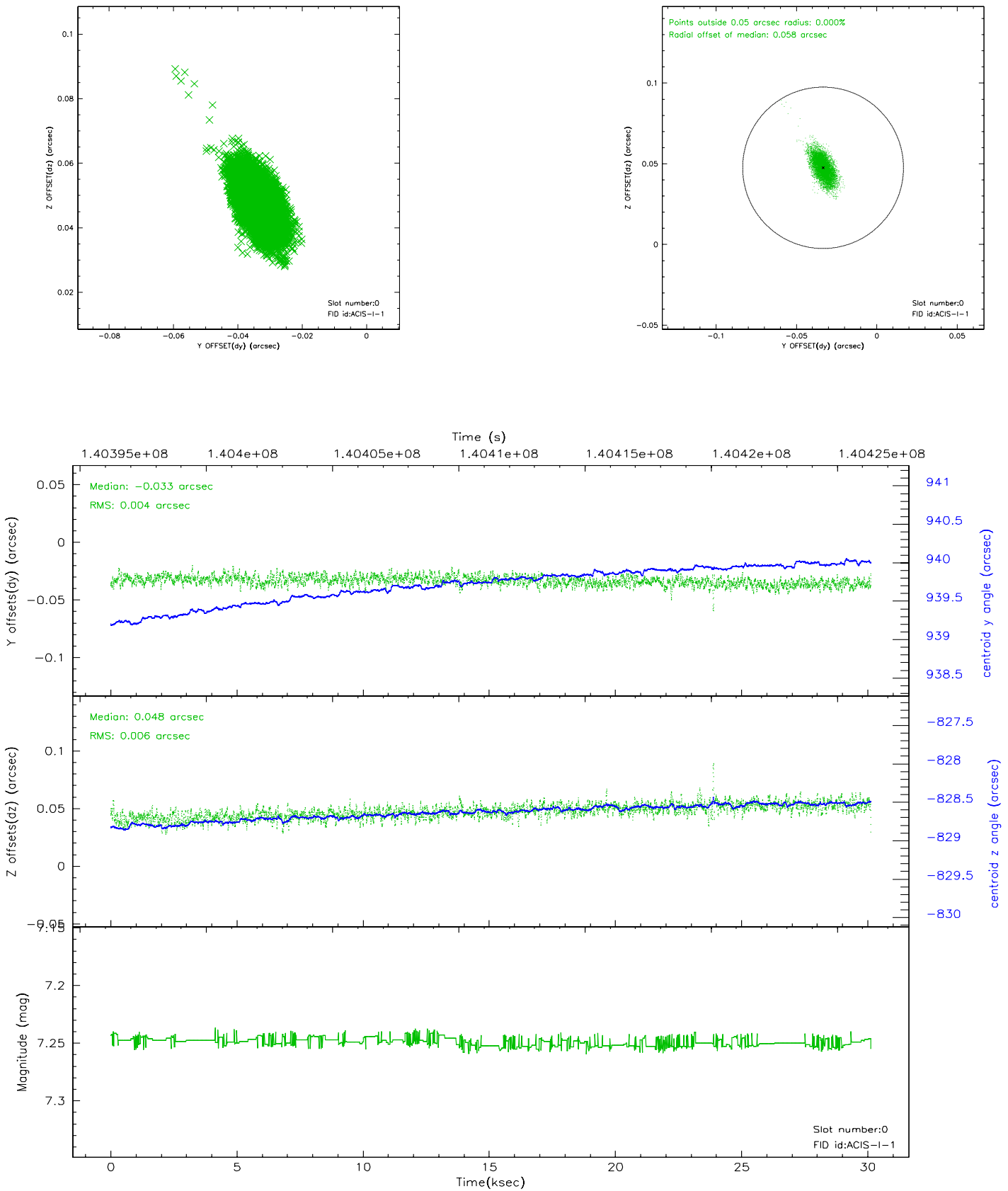


2.4.5 Slot 7

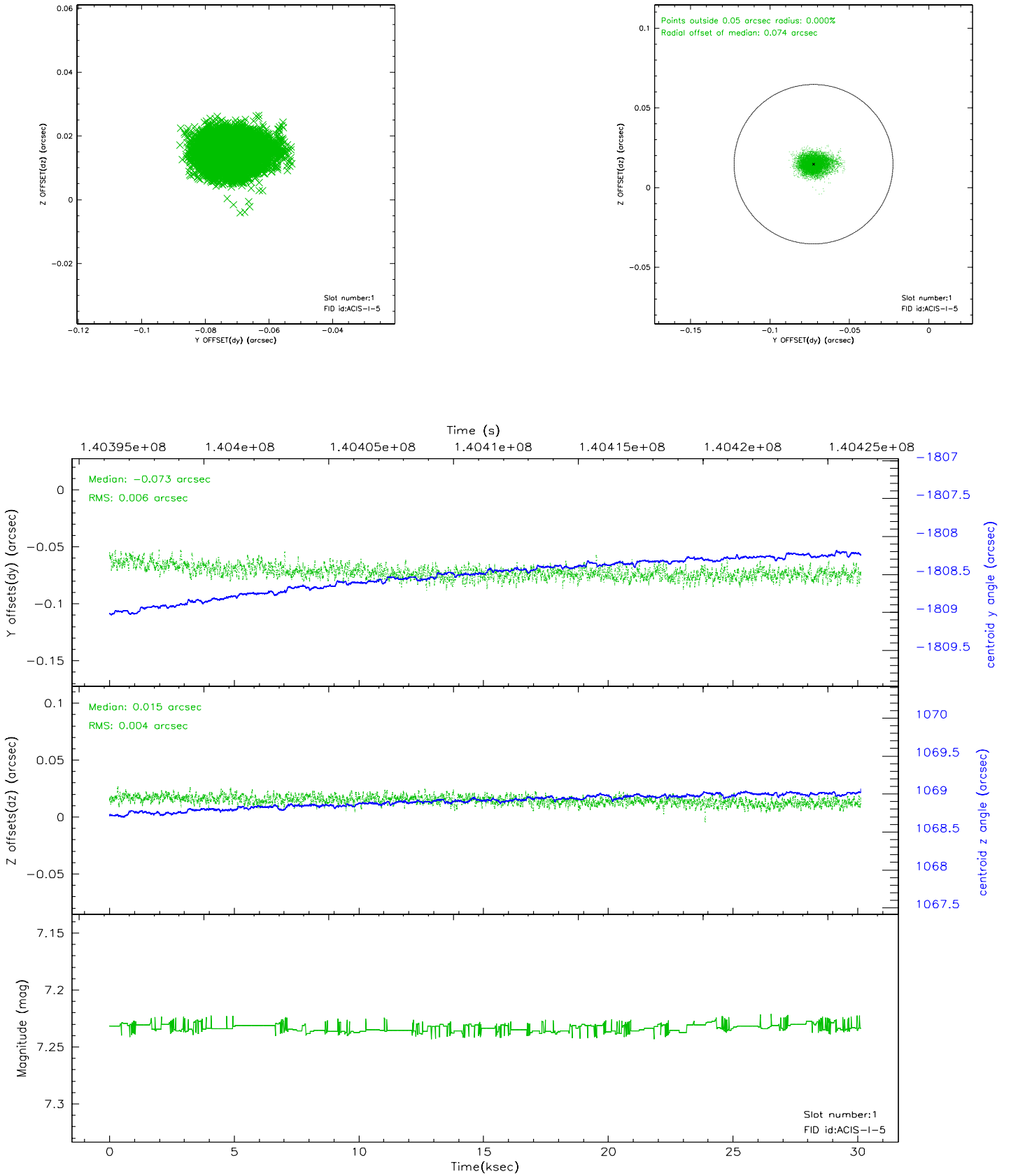


2.5 FID Slots

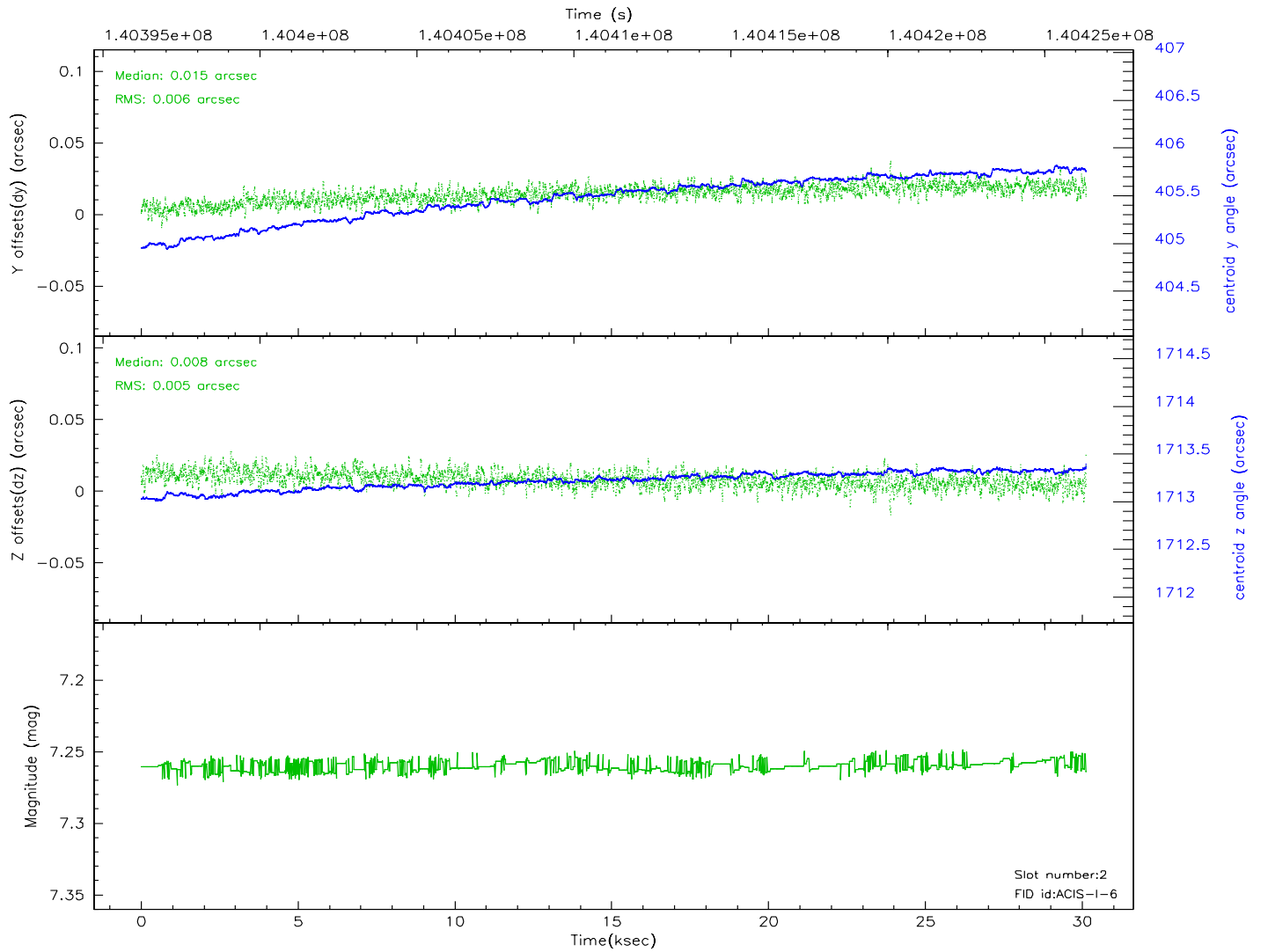
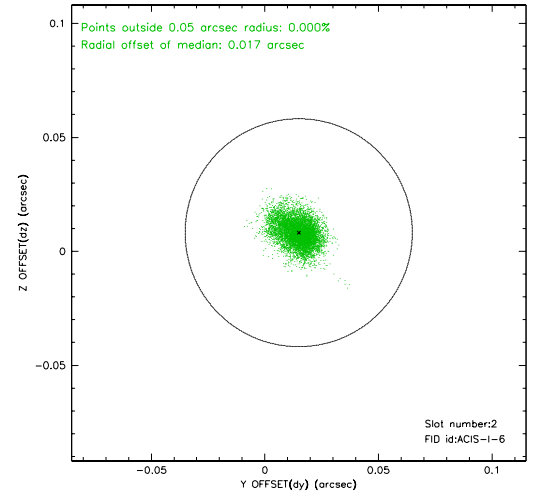
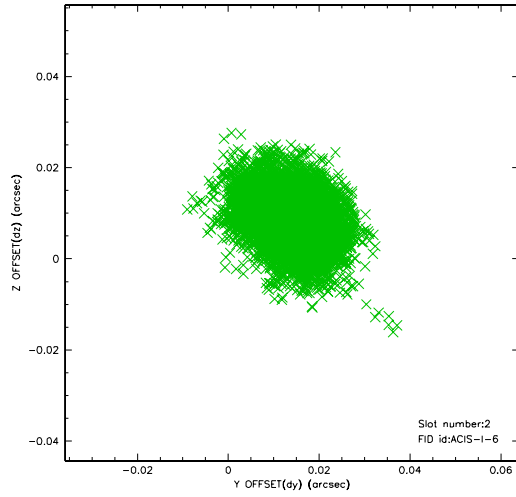
2.5.1 Slot 0



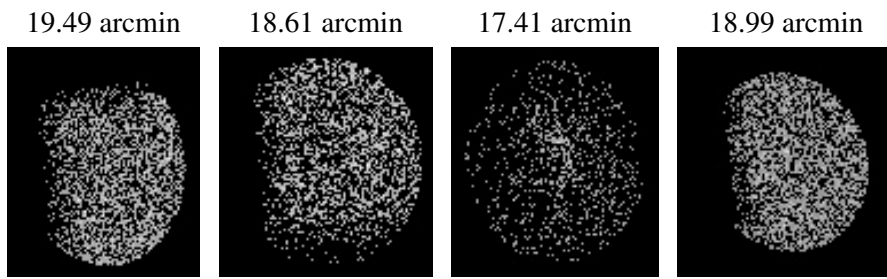
2.5.2 Slot 1



2.5.3 Slot 2



3 Point Sources



A Summary

A.1 Status

V&V Scientist	Beth Sundheim
V&V Date (YYYY-MM-DD)	2006.09.19
V&V Edition	1
V&V Disposition and Status	OK
V&V Charge Time	30.131

A.2 Comments