

V&V Reference Report

L2 ASCDS Version : 8.4.5

Observation 2577 - L2 Version 3
Chandra X-Ray Center

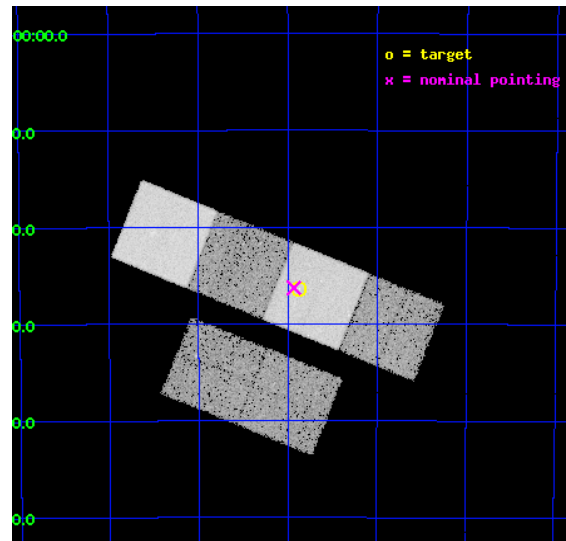
L2 Processing Date : Oct 4 2012

Contents

1	Front	2
2	OBI	3
2.1	OBI	3
2.1.1	Images	3
2.1.2	Bias	3
2.1.3	Parameters	4
2.1.4	Events	4
2.2	Compared Parameters	5
2.3	Aspect	6
2.4	Star Slots	9
2.4.1	Slot 3	9
2.4.2	Slot 4	10
2.4.3	Slot 5	11
2.4.4	Slot 6	12
2.4.5	Slot 7	13
2.5	FID Slots	14
2.5.1	Slot 0	14
2.5.2	Slot 1	15
2.5.3	Slot 2	16
A	Summary	17
A.1	Status	17
A.2	Comments	17

1 Front

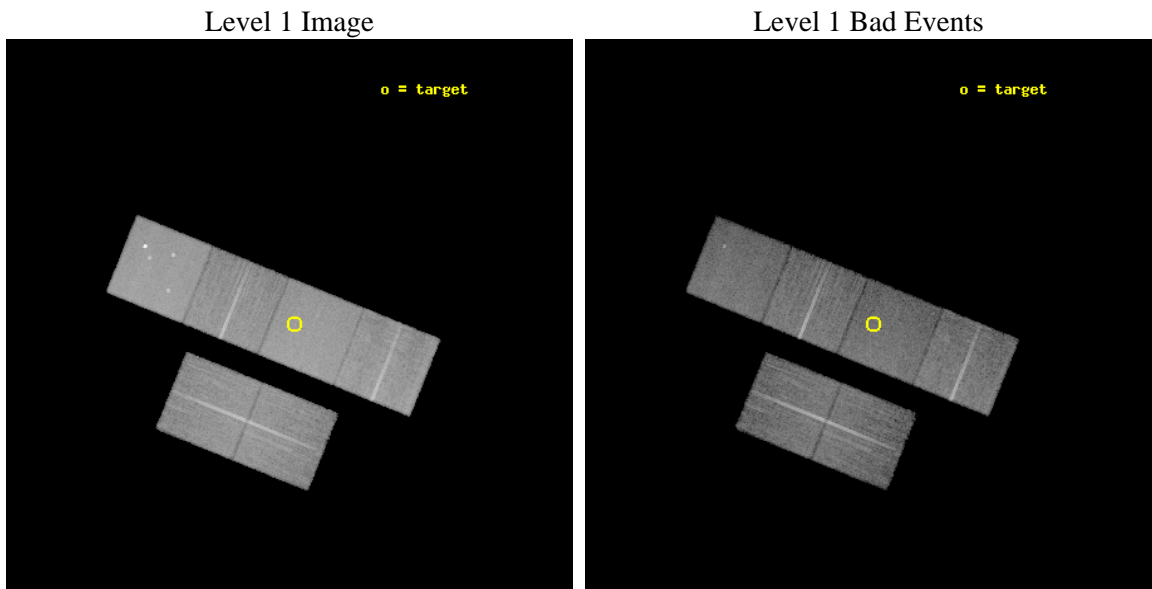
seq_num	200185	Sequence number
obs_id	2577	Observation id
title	INVESTIGATING COLLIDING WINDS AND MAGNETISED STARS IN YOUNG PLANETARY NEBULAE IMAGED WITH HST	Proposal title
observer	Dr. Raghvendra Sahai	Principal investigator
object	HEN2-104	Source name
dtcycle	0	
cycle	P	events from which exps? Prim/Second/Both
ra_targ	212.9675	Observer's specified target RA [deg]
dec_targ	-51.44	Observer's specified target Dec [deg]
ra_nom	212.98275061431	Nominal RA [deg]
dec_nom	-51.437991199706	Nominal Dec [deg]
roll_nom	22.009065751285	Nominal Roll [deg]
revision	3	Processing version of data
ontime	19958.399925649	Sum of GTIs [s]
livetime	19705.674648285	Livetime [s]
ontime2	19958.399925649	Sum of GTIs [s]
ontime3	19958.399925649	Sum of GTIs [s]
ontime5	19958.399925649	Sum of GTIs [s]
ontime6	19958.399925649	Sum of GTIs [s]
ontime7	19958.399925649	Sum of GTIs [s]
ontime8	19958.399925649	Sum of GTIs [s]
l2events	203394	Number of level 2 events



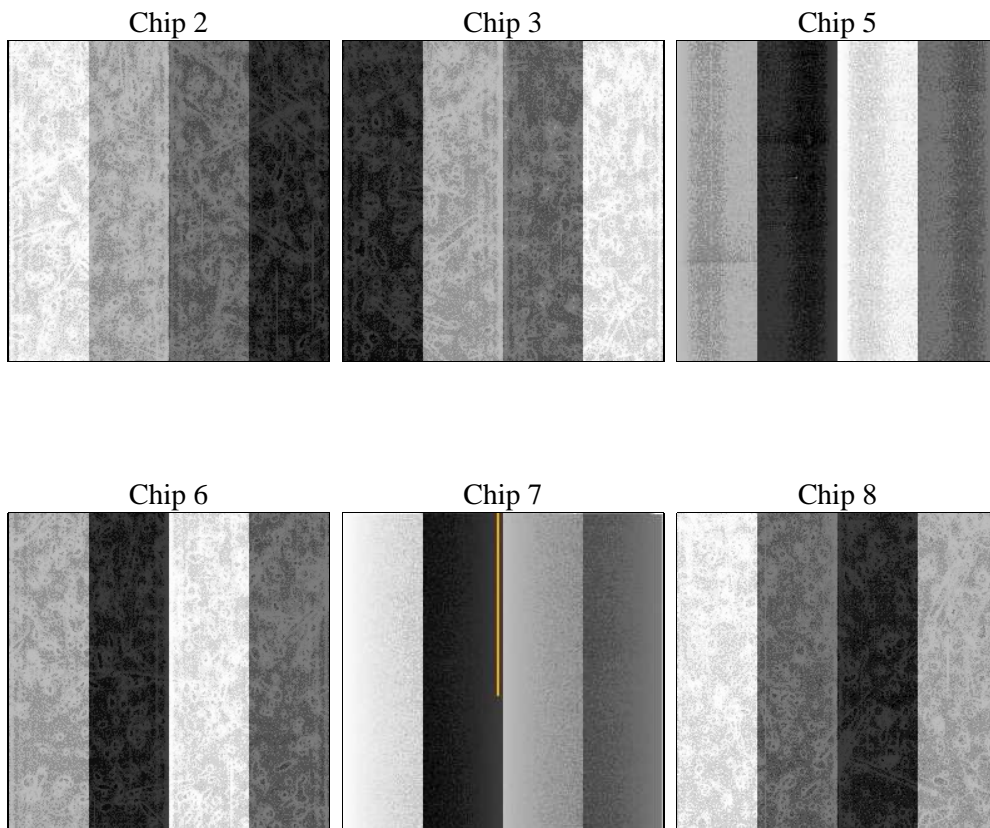
2 OBI

2.1 OBI

2.1.1 Images



2.1.2 Bias



2.1.3 Parameters

obi_num	1	Obi number	sched_exp_time	20000.000000	[s] Scheduled observation exposure time
ascdsver	8.4.5	Processing system revision	ontime	19958.399925649	Sum of GTIs [s]
caldsver	4.5.2	 	ontime2	19958.399925649	Sum of GTIs [s]
date	2012-10-04T19:29:13	Date and time of file creation	ontime3	19958.399925649	Sum of GTIs [s]
revision	3	Processing version of data	ontime5	19958.399925649	Sum of GTIs [s]
			ontime6	19958.399925649	Sum of GTIs [s]
			ontime7	19958.399925649	Sum of GTIs [s]
			ontime8	19958.399925649	Sum of GTIs [s]
			l1events	926541	Number of level 1 events

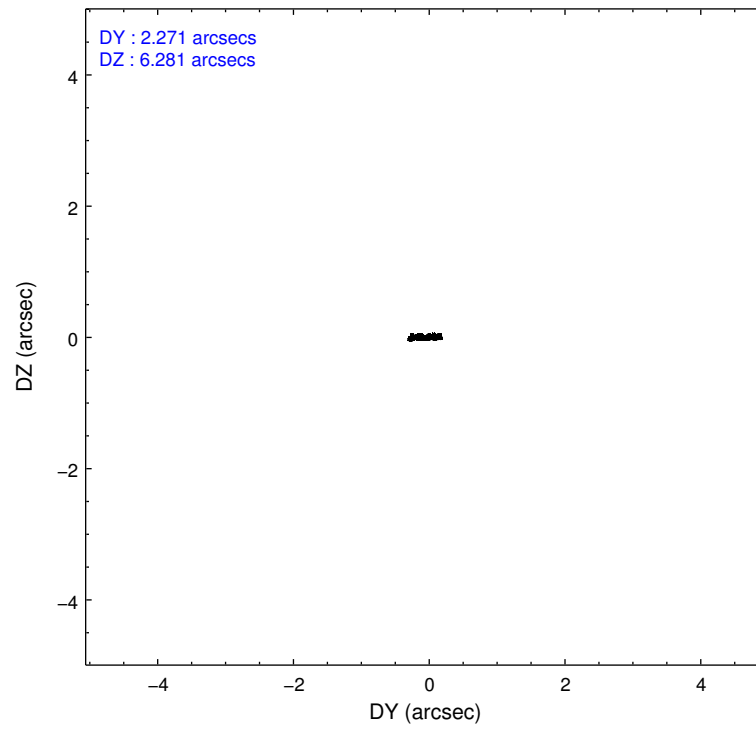
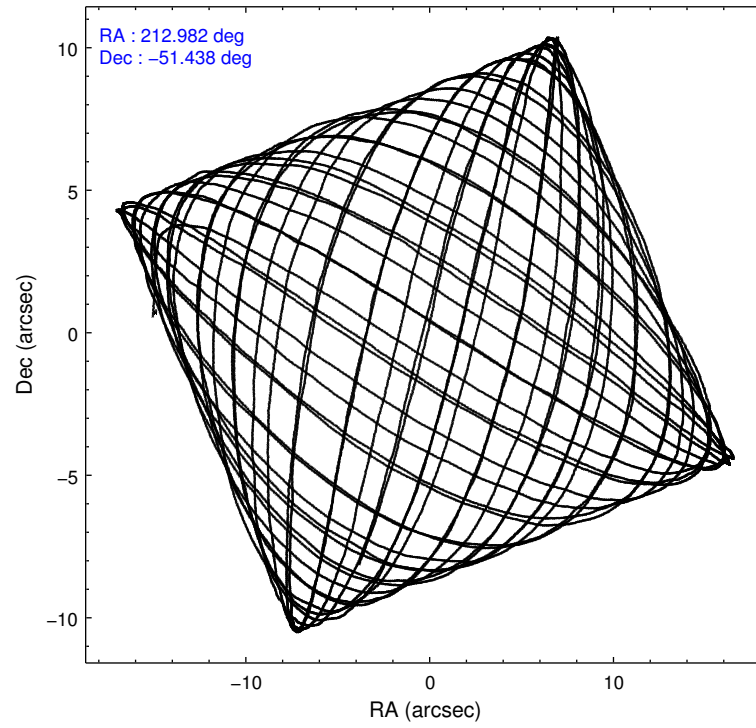
2.1.4 Events

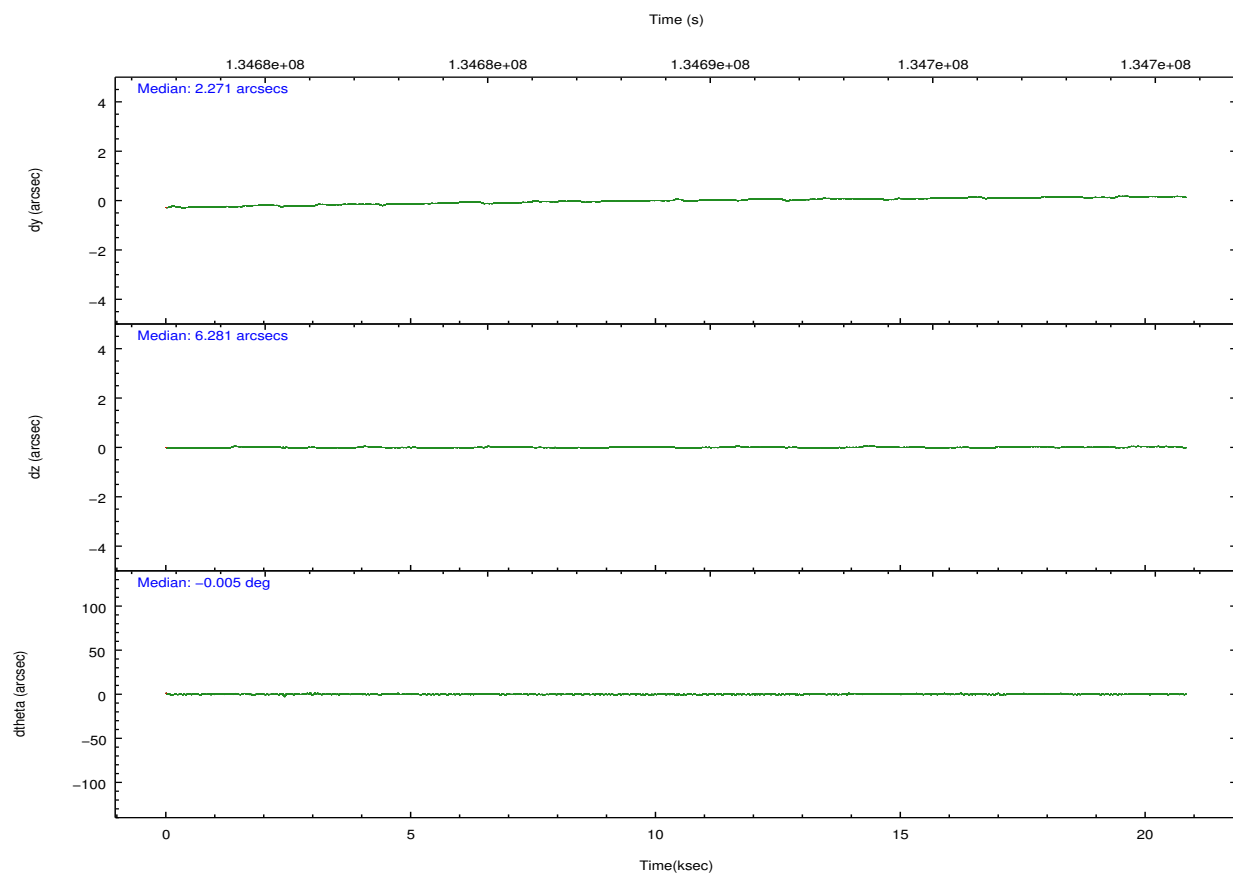
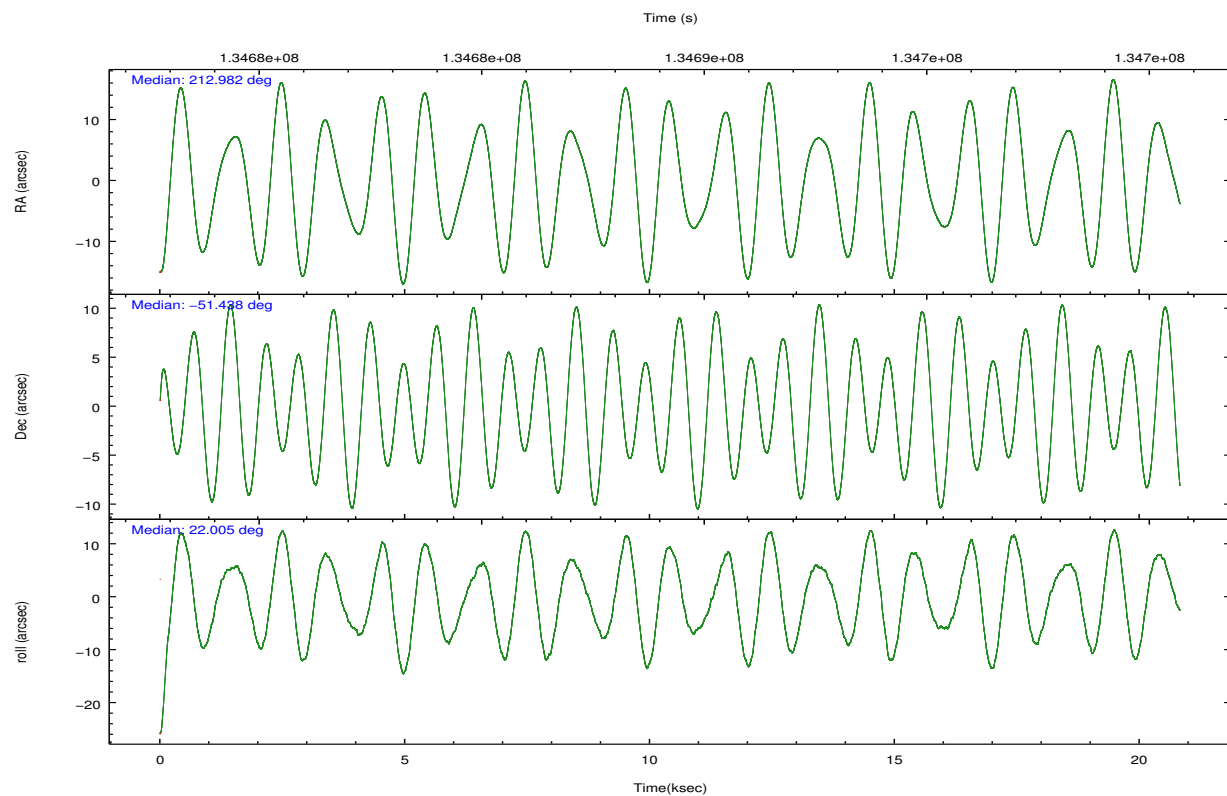
	ccd 2	ccd 3	ccd 5	ccd 6	ccd 7	ccd 8		ccd 2	ccd 3	ccd 5	ccd 6	ccd 7	ccd 8
level 1 events	134951	127353	193088	136459	170892	163798	grade 0 events	6396	6243	9583	6149	6478	10163
rejected events	119823	112597	101948	121162	100312	131717		4%	4%	4%	4%	3%	6%
rejected %	88%	88%	52%	88%	58%	80%	grade 1 events	54	73	581	52	183	90
								0%	0%	0%	0%	0%	0%
							grade 2 events	3338	2984	29773	3129	13821	6968
								2%	2%	15%	2%	8%	4%
							grade 3 events	1377	1427	3870	1531	6487	3369
								1%	1%	2%	1%	3%	2%
							grade 4 events	1404	1457	3649	1466	6357	3168
								1%	1%	1%	1%	3%	1%
							grade 5 events	4884	5179	14450	5751	16566	7315
								3%	4%	7%	4%	9%	4%
							grade 6 events	2620	2647	44291	3037	37464	8429
								1%	2%	22%	2%	21%	5%
							grade 7 events	114878	107343	86891	115344	83536	124296
								85%	84%	45%	84%	48%	75%

2.2 Compared Parameters

Parameter	Planned	Actual	Parameter	Planned	Actual
Instrument	ACIS	ACIS	Obspar format version number	7	7
Detector	ACIS-235678	ACIS-235678	Obspar file type	PREDICTED	ACTUAL
Grating	NONE	NONE	Obspar update status	NONE	UPDATED
Data mode	FAINT	FAINT	Number of optional ACIS chips dropped	0	0
Observation mode	POINTING	POINTING	On-chip summing requested	N	N
[deg] Pointing RA	212.956243	212.9827506143052	Subarray requested	NONE	NONE
[deg] Pointing Dec	-51.459679	-51.43799119970572	Alternating exposures requested	N	N
[deg] Pointing Roll	21.831713	22.0090657512854	[s] Primary exposure time	0.000000	3.2
[mm] SIM focus pos	-0.684267	-0.6828225247311905			
[mm] SIM defocus	0	0.001444936568705701			
[mm] SIM translation stage pos	-190.132523	-190.1400660498719			
[mm] SIM translation stage offset	0	0.00754346686406393			
[s] Observation start time (MET)	134679651.184000	134678369.51552			
Observation start date	2002-04-08T18:59:47	2002-04-08T18:39:29			
[s] Observation end time (MET)	134699651.184000	134700270.17891			
Observation end date	2002-04-09T00:33:07	2002-04-09T00:44:30			
Read mode	TIMED	TIMED			

2.3 Aspect



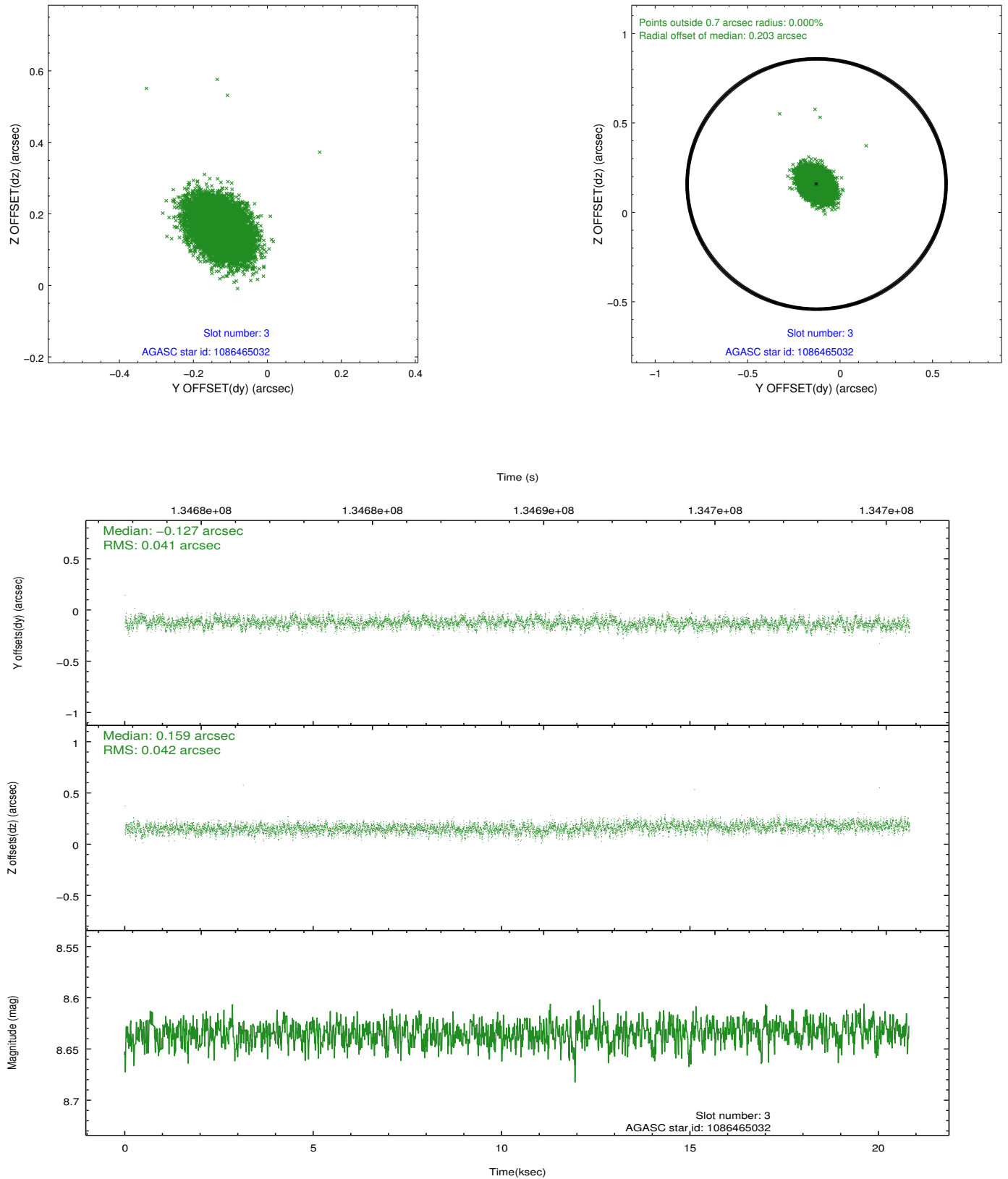


Slot Statistics

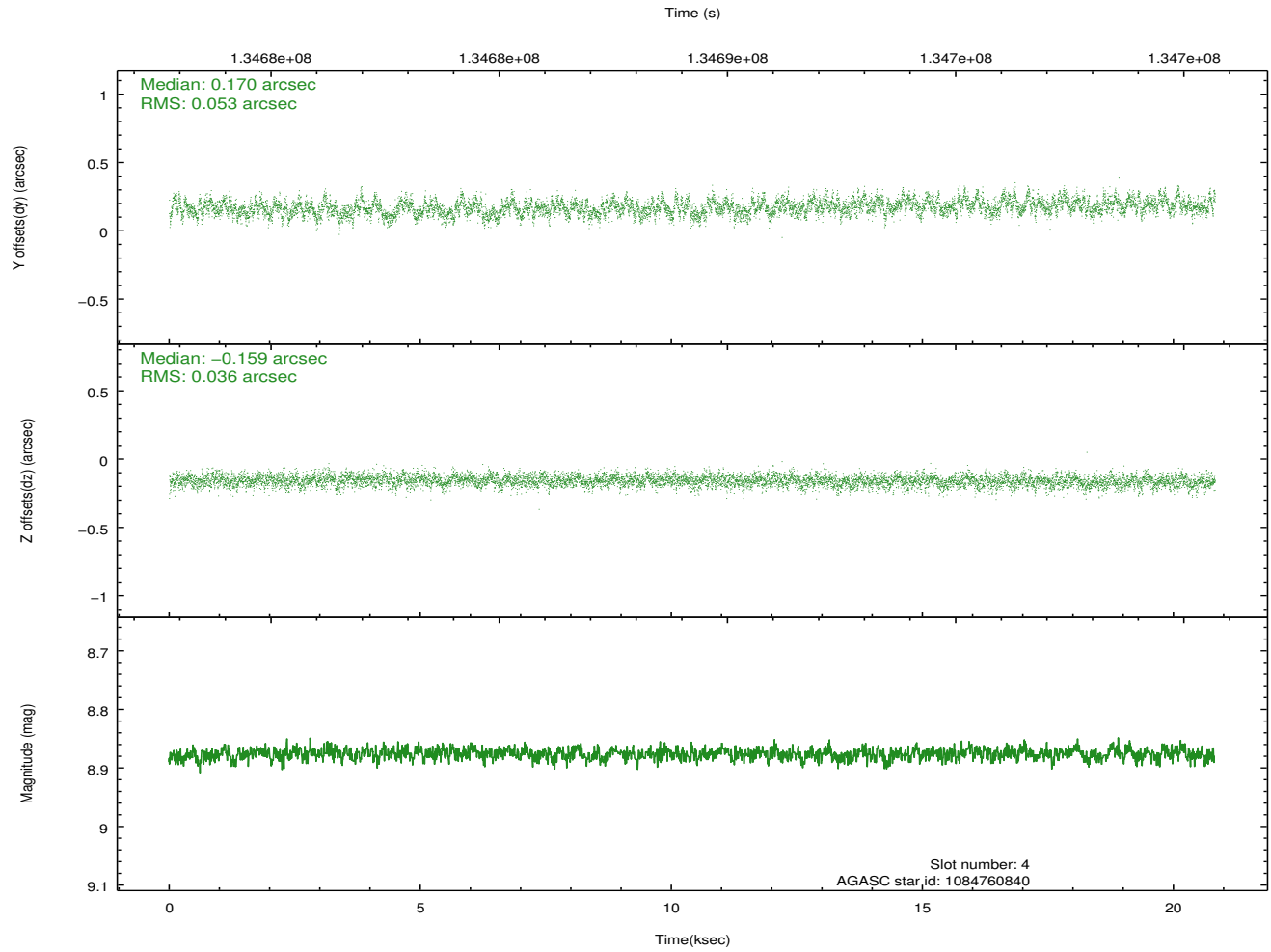
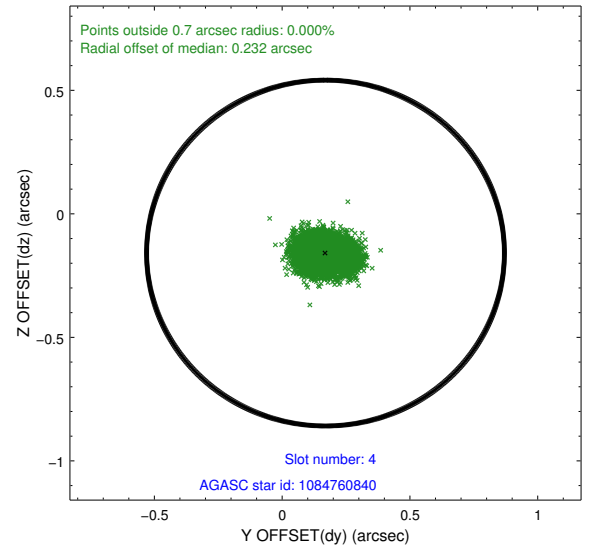
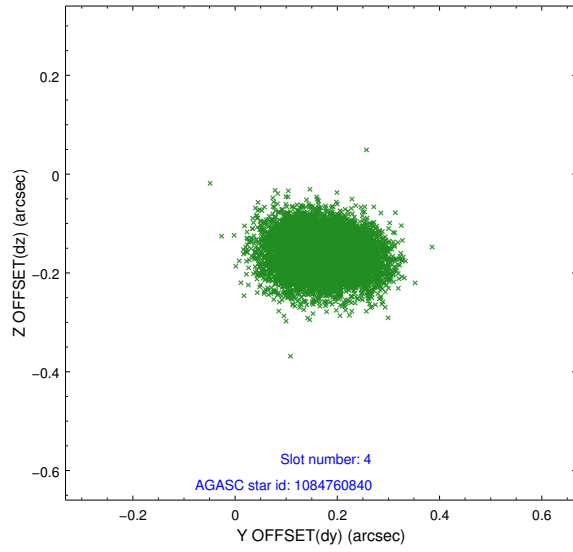
slot	status	id	mag	n_pts	med_dy	med_dz	dr1	dr2	ra	dec	mean_y	mean_z
0	FID	ACIS-S-2	7.11	5080	-0.042	0.004	0.014	0.023	0.000000	0.000000	-754.88	-1727.44
1	FID	ACIS-S-4	7.21	5079	-0.013	0.020	0.021	0.035	0.000000	0.000000	2158.30	180.94
2	FID	ACIS-S-5	7.24	5079	0.026	-0.015	0.011	0.020	0.000000	0.000000	-1807.46	174.69
3	GUIDE	1086465032	8.63	10158	-0.127	0.159	0.062	0.101	213.783857	-51.862056	1166.13	-2038.88
4	GUIDE	1084760840	8.88	10156	0.170	-0.159	0.067	0.114	212.056401	-51.580948	-2034.66	330.80
5	GUIDE	1084760192	8.56	10153	-0.117	-0.156	0.056	0.089	213.454351	-50.894751	1805.02	1463.20
6	GUIDE	1084753736	9.08	10157	0.096	0.184	0.093	0.148	212.745733	-52.231823	-1463.80	-2408.72
7	GUIDE	1084758736	9.21	10149	-0.021	-0.029	0.085	0.139	213.617446	-50.698758	2416.17	1975.33

2.4 Star Slots

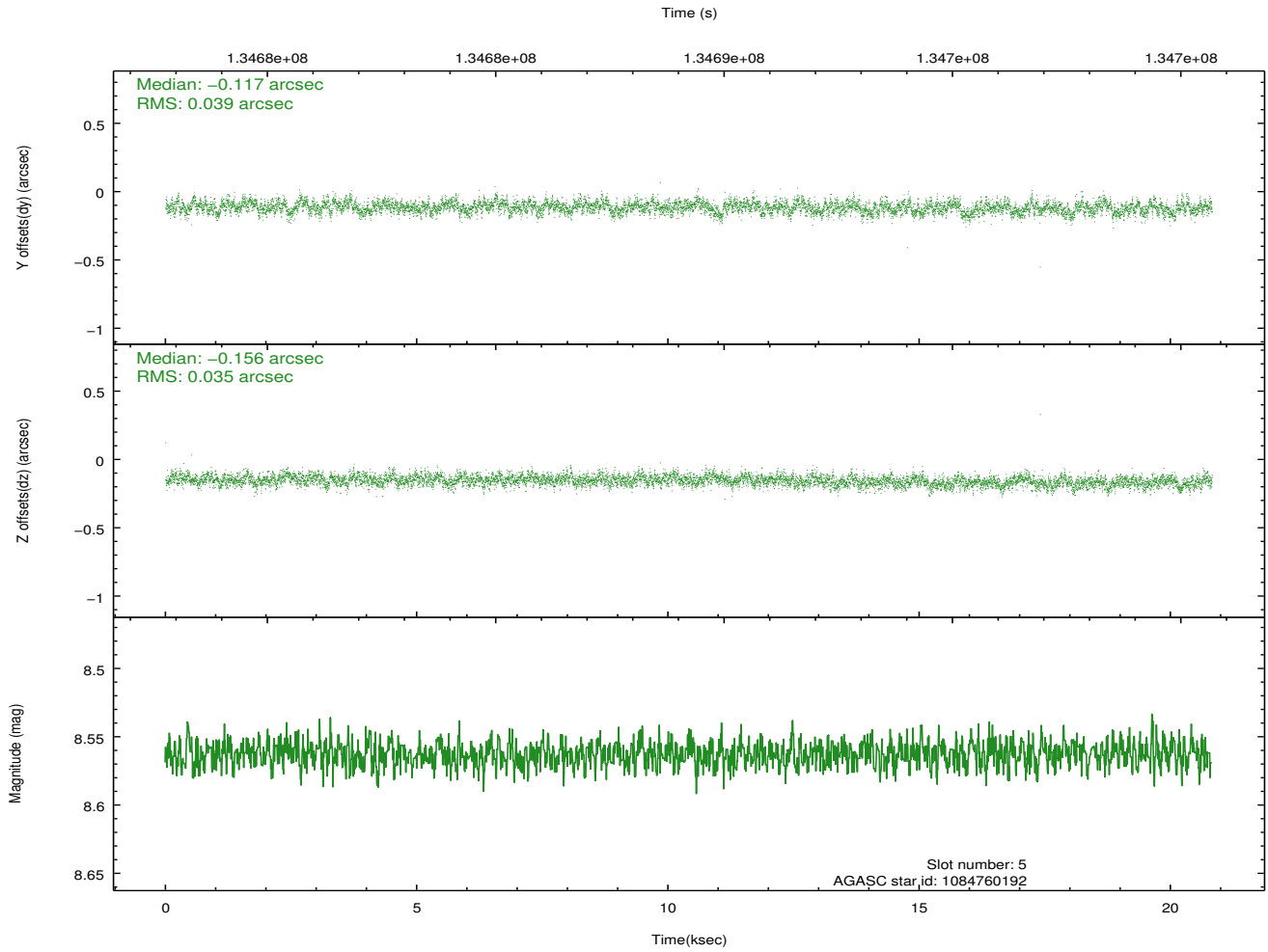
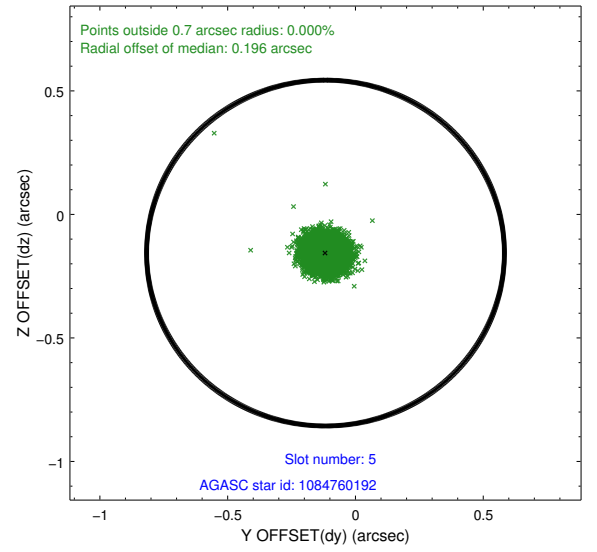
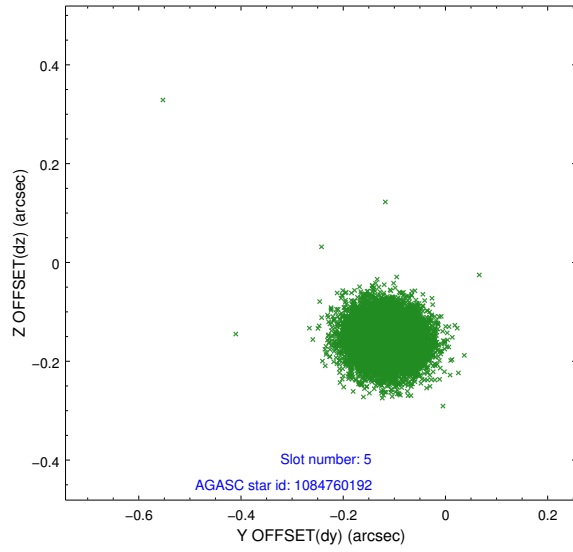
2.4.1 Slot 3



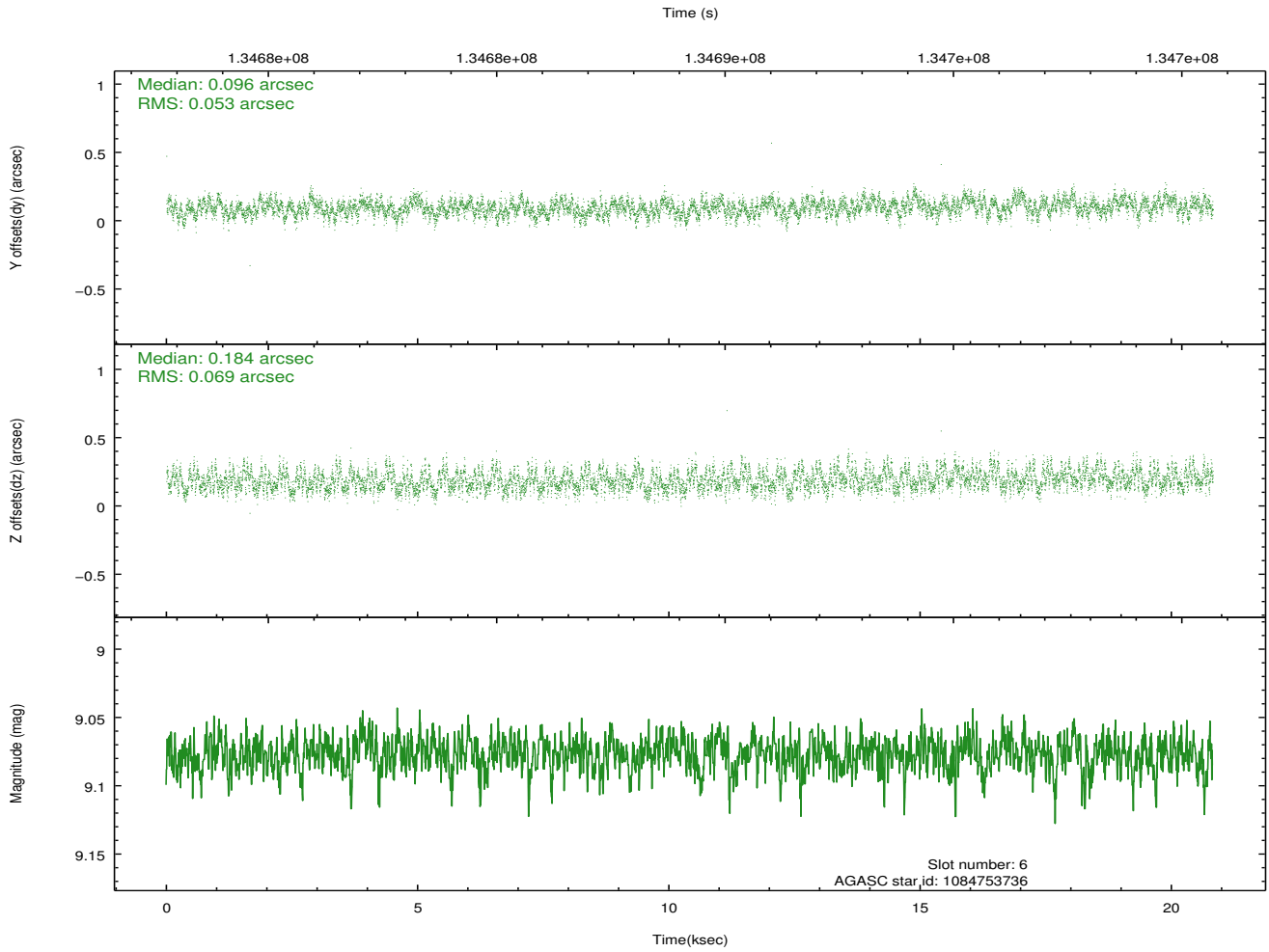
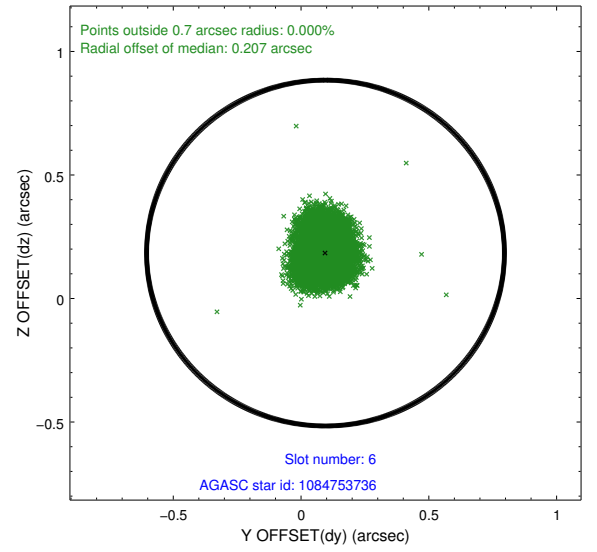
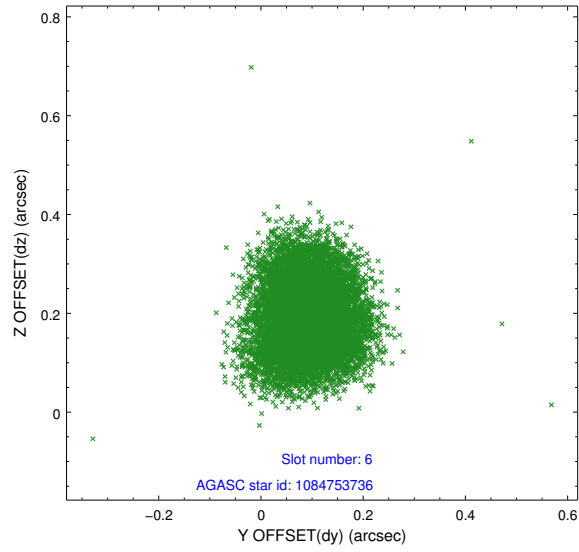
2.4.2 Slot 4



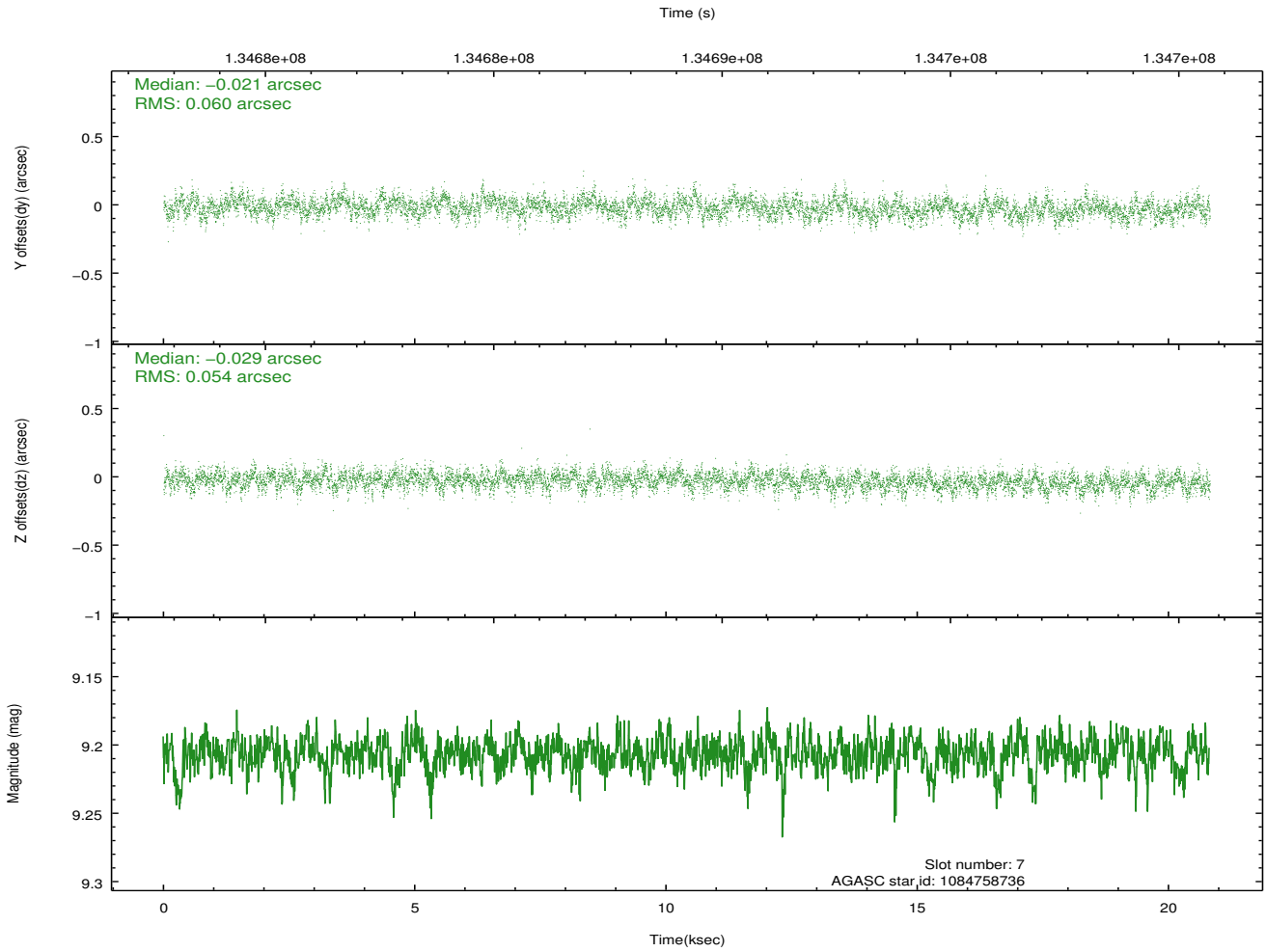
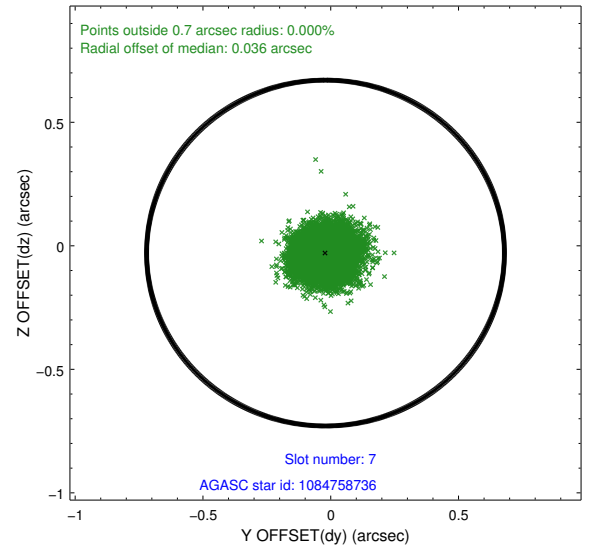
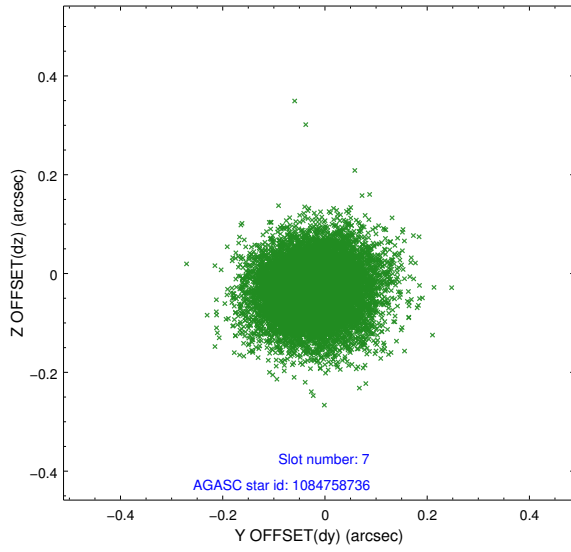
2.4.3 Slot 5



2.4.4 Slot 6

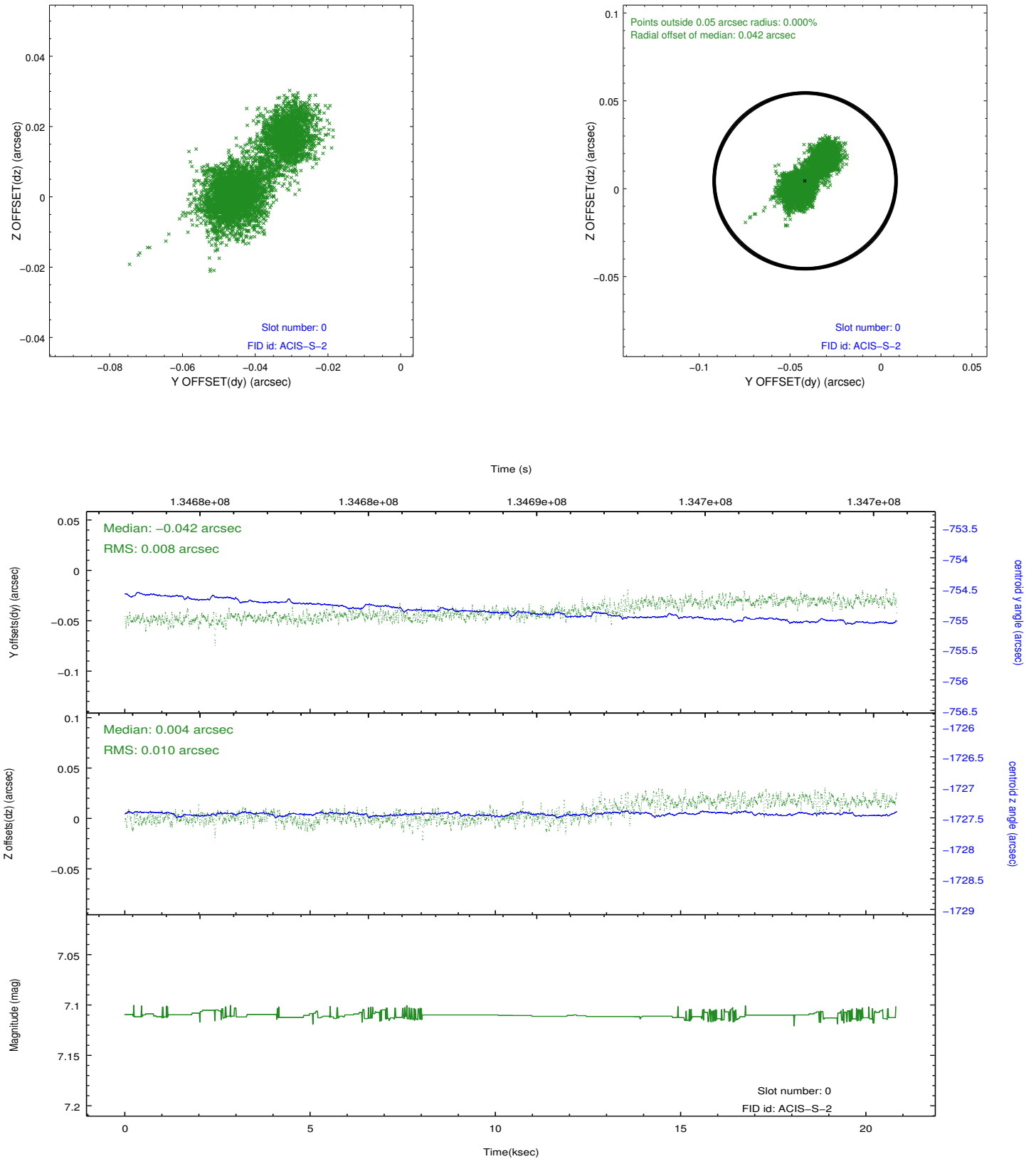


2.4.5 Slot 7

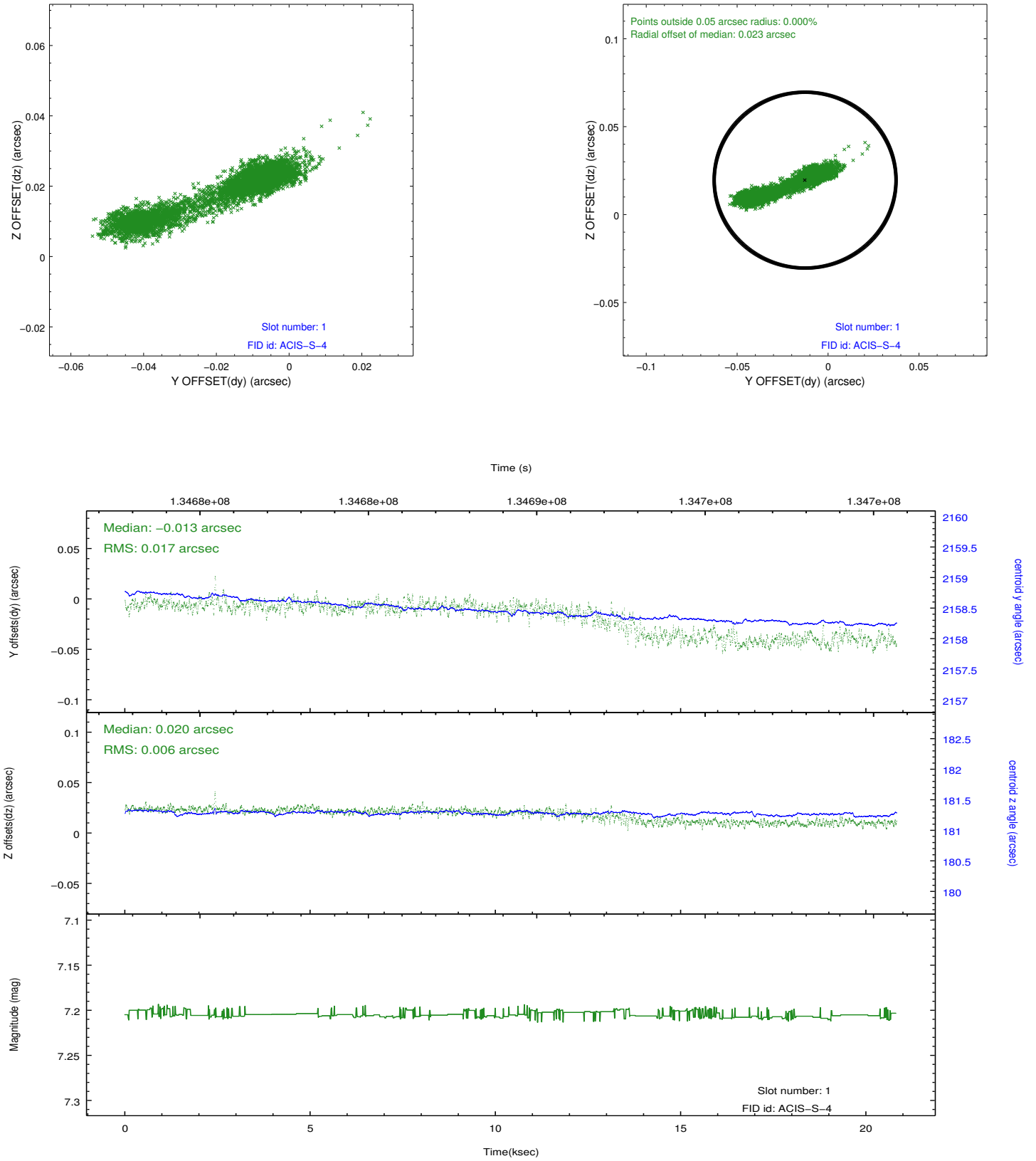


2.5 FID Slots

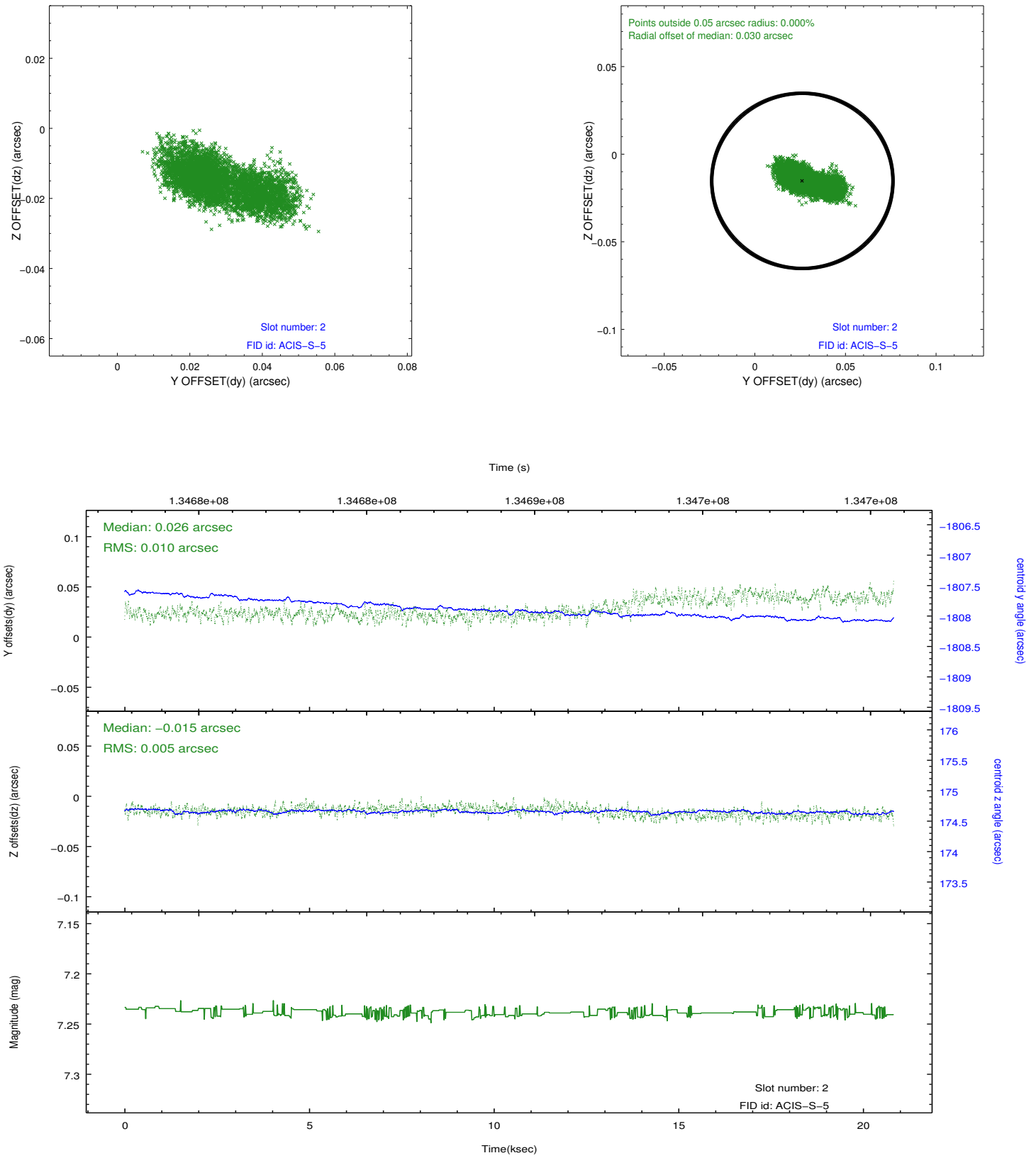
2.5.1 Slot 0



2.5.2 Slot 1



2.5.3 Slot 2



A Summary

A.1 Status

V&V Scientist	Beth Sundheim
V&V Date (YYYY-MM-DD)	2012.10.09
V&V Edition	1
V&V Disposition and Status	OK
V&V Charge Time	19.961

A.2 Comments