

V&V Reference Report

L2 ASCDS Version : 8.4.5

Observation 2555 - L2 Version 4
Chandra X-Ray Center

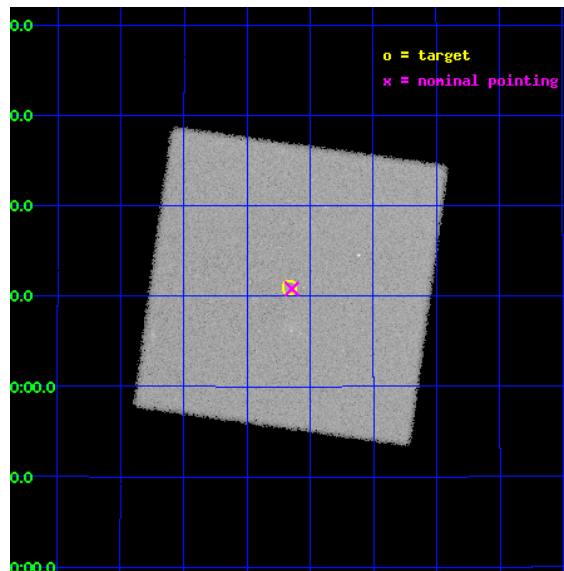
L2 Processing Date : Oct 9 2012

Contents

1	Front	2
2	OBI	3
2.1	OBI	3
2.1.1	Images	3
2.1.2	Parameters	4
2.1.3	Events	4
2.2	Compared Parameters	5
2.3	Aspect	6
2.4	Star Slots	9
2.4.1	Slot 3	9
2.4.2	Slot 4	10
2.4.3	Slot 5	11
2.4.4	Slot 6	12
2.4.5	Slot 7	13
2.5	FID Slots	14
2.5.1	Slot 0	14
2.5.2	Slot 1	15
2.5.3	Slot 2	16
A	Summary	17
A.1	Status	17
A.2	Comments	17

1 Front

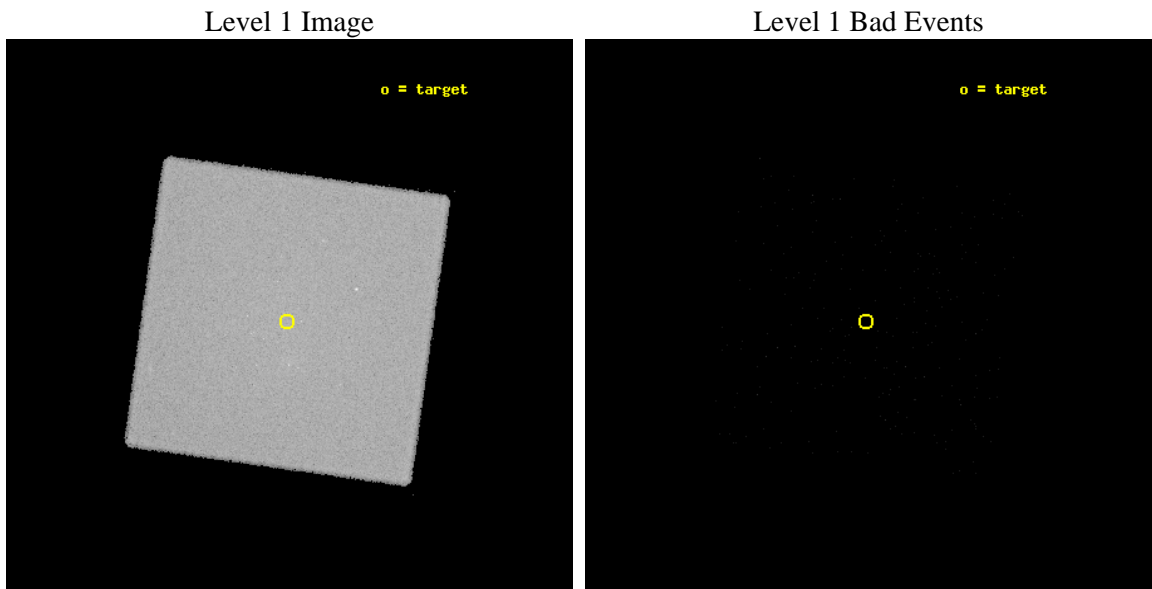
seq_num	200163	Sequence number
obs_id	2555	Observation id
title	BURIED ALIVE IN THE CORONAL GRAVEYARD?!	Proposal title
observer	Dr. Thomas Ayres	Principal investigator
object	ALPHA BOOTIS	Source name
ra_targ	213.915	Observer's specified target RA [deg]
dec_targ	19.1825	Observer's specified target Dec [deg]
ra_nom	213.91113710333	Nominal RA [deg]
dec_nom	19.180450615887	Nominal Dec [deg]
roll_nom	232.93245629282	Nominal Roll [deg]
revision	4	Processing version of data
ontime	18482.928884119	[s]
livetime	18387.058889302	Ontime multiplied by DTCOR
l2events	484624	Number of level 2 events



2 OBI

2.1 OBI

2.1.1 Images



2.1.2 Parameters

obi_num	0	Obi number	sched_exp_time	18500.000000	[s] Scheduled observation exposure time
ascdsver	8.4.5	Processing system revision	ontime	18483.057006598	[s]
caldbver	4.5.2	 	l1events	730624	Number of level 1 events
date	2012-10-09T05:13:43	Date and time of file creation			
revision	4	Processing version of data			

2.1.3 Events

Level 1 Events

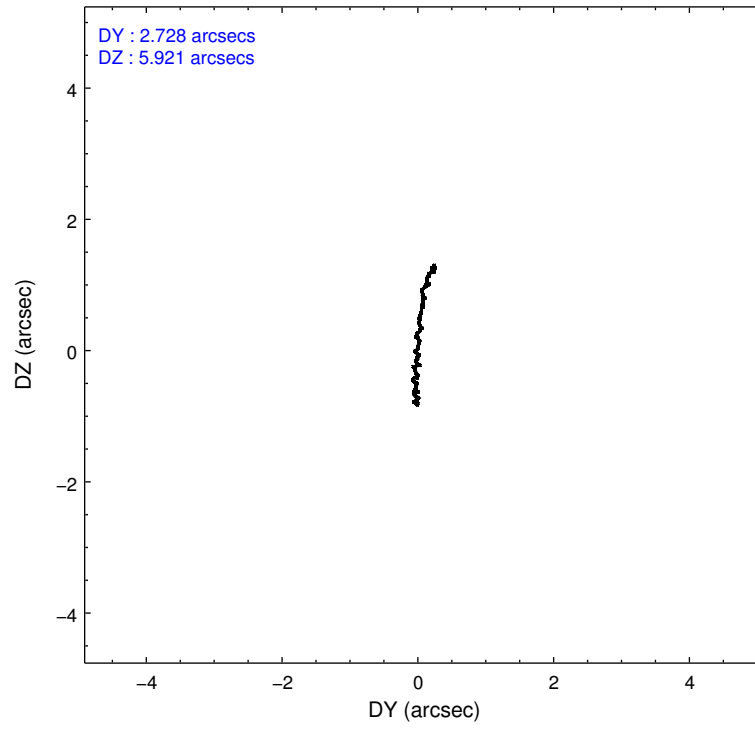
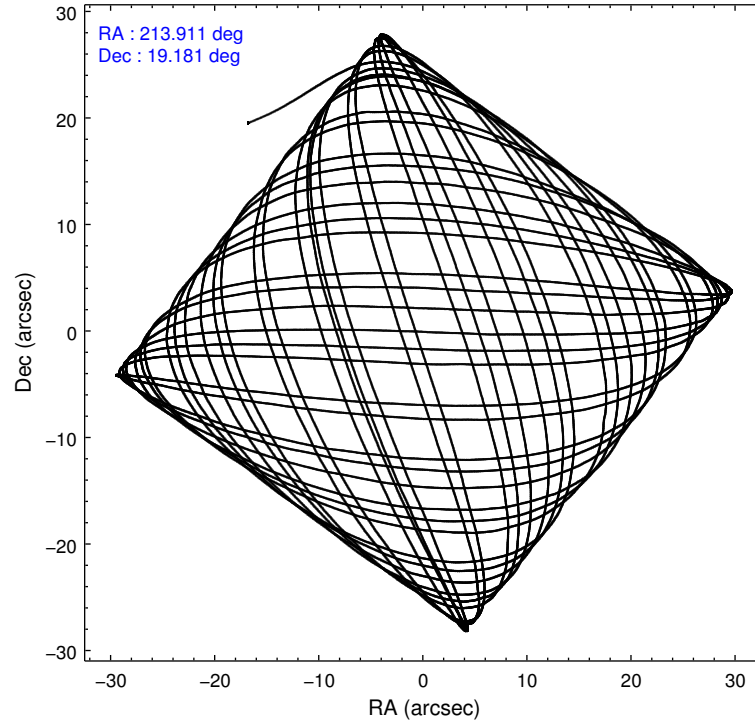
	segment 0
level 1 events	730624
rejected events	4969
rejected %	0%

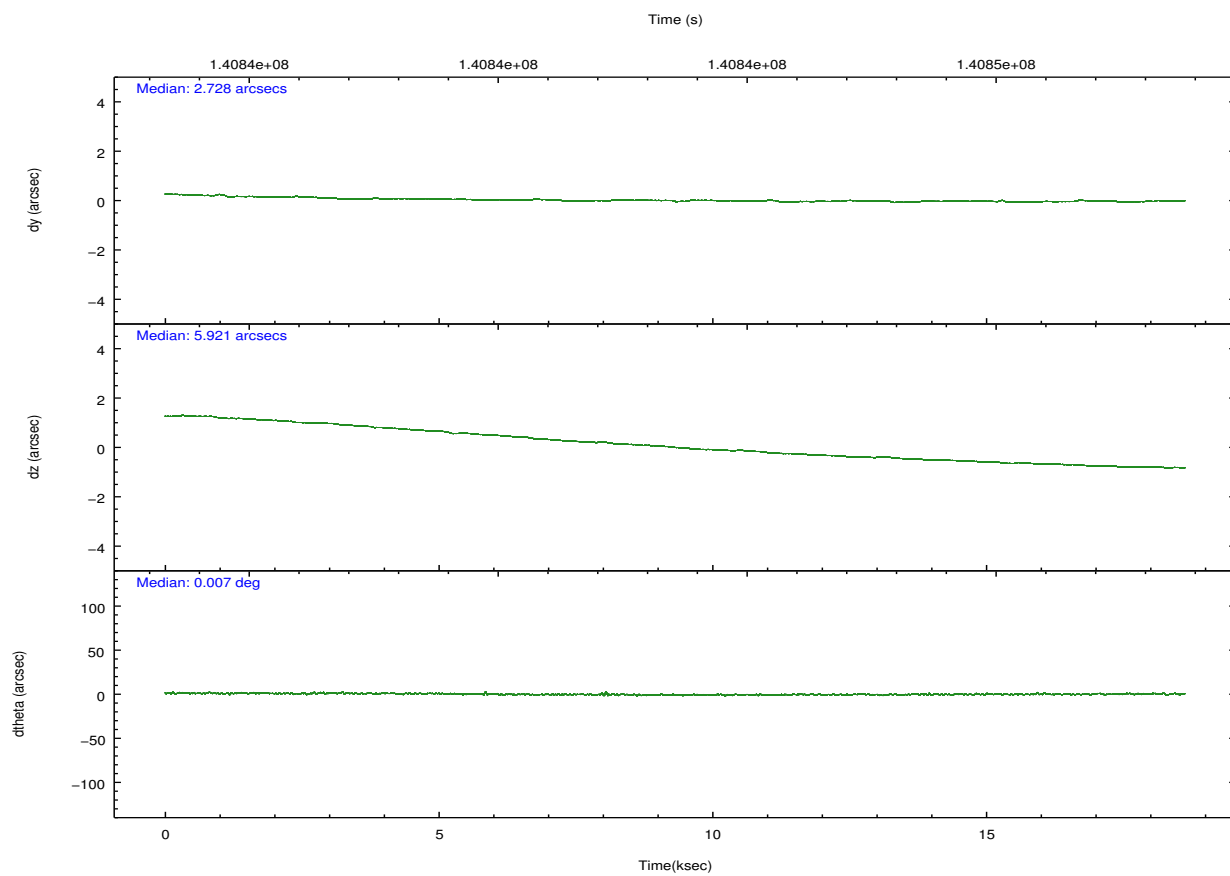
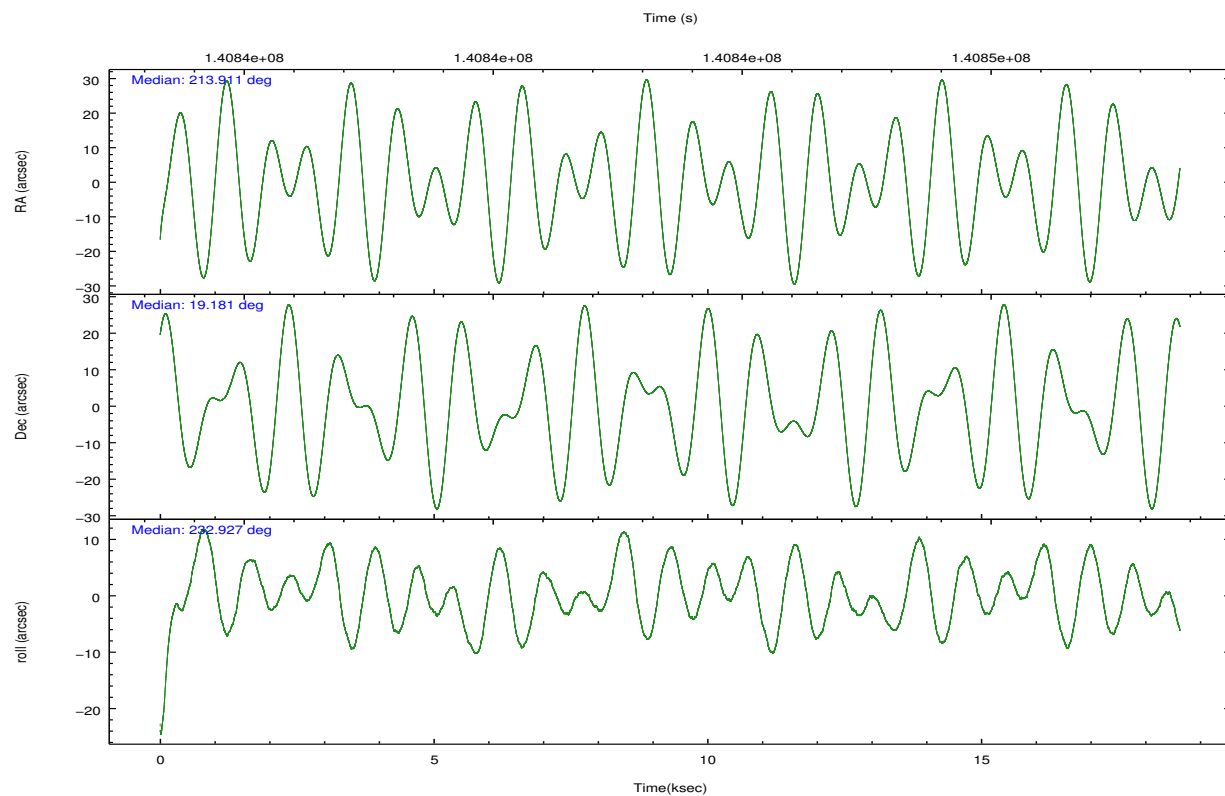
2.2 Compared Parameters

Parameter	Planned	Actual
Instrument	HRC	HRC
Detector	HRC-I	HRC-I
Grating	NONE	NONE
Data mode	OBSERVING	OBSERVING
Observation mode	POINTING	POINTING
[deg] Pointing RA	213.914057	213.9111371033348
[deg] Pointing Dec	19.207364	19.18045061588744
[deg] Pointing Roll	233.026984	232.9324562928238
[mm] SIM focus pos	-1.040293	-1.038866356238299
[mm] SIM defocus	0	0.001426264420575141
[mm] SIM translation stage pos	126.985494	126.9829799899862
[mm] SIM translation stage offset	0	0.002508901615314585
[s] Observation start time (MET)	140834363.184000	140833372.79154
Observation start date	2002-06-19T00:38:19	2002-06-19T00:22:52
[s] Observation end time (MET)	140852863.184000	140853831.27988
Observation end date	2002-06-19T05:46:39	2002-06-19T06:03:51

Parameter	Planned	Actual
Obspar format version number	7	7
Obspar file type	PREDICTED	ACTUAL
Obspar update status	NONE	UPDATED

2.3 Aspect



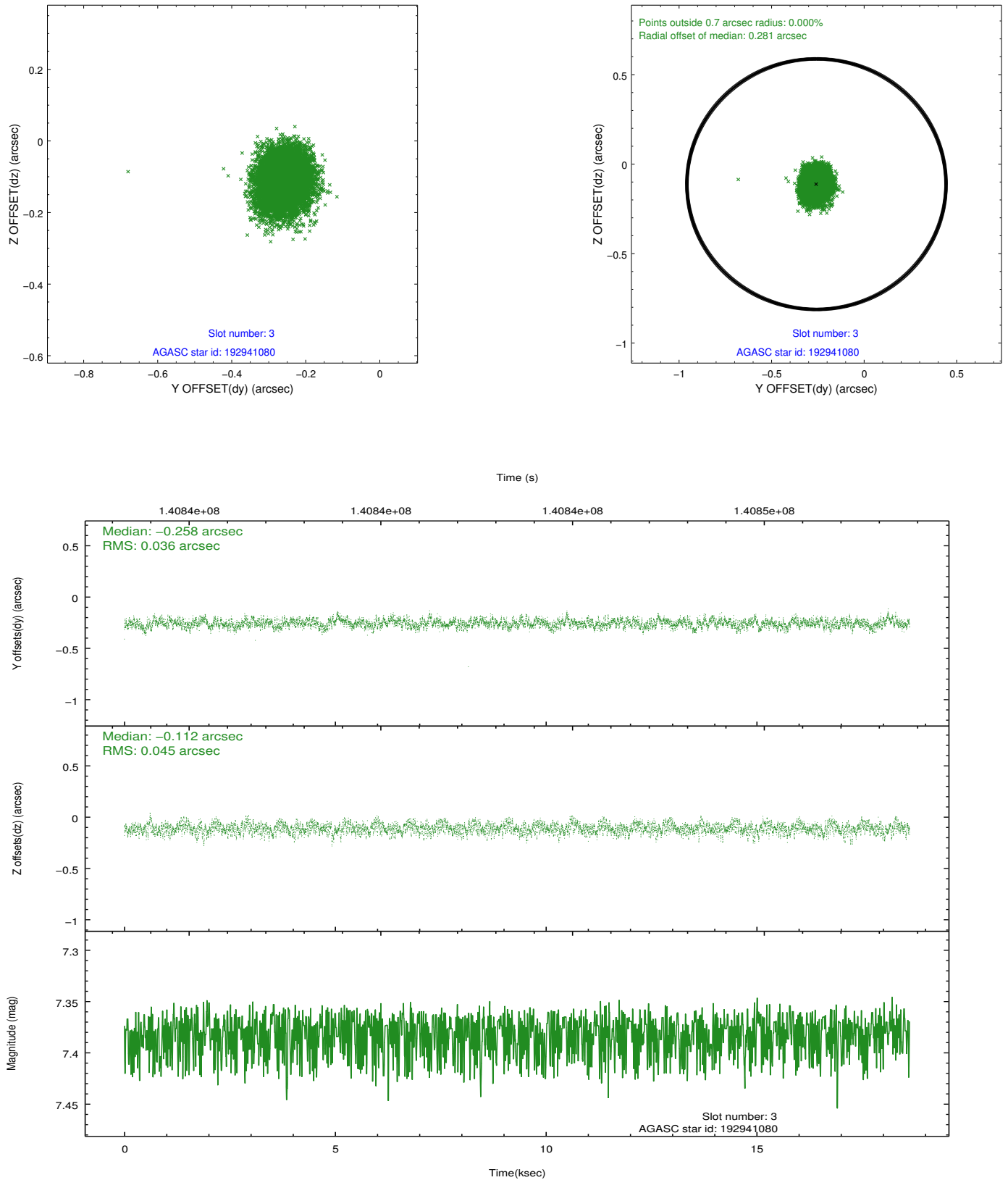


Slot Statistics

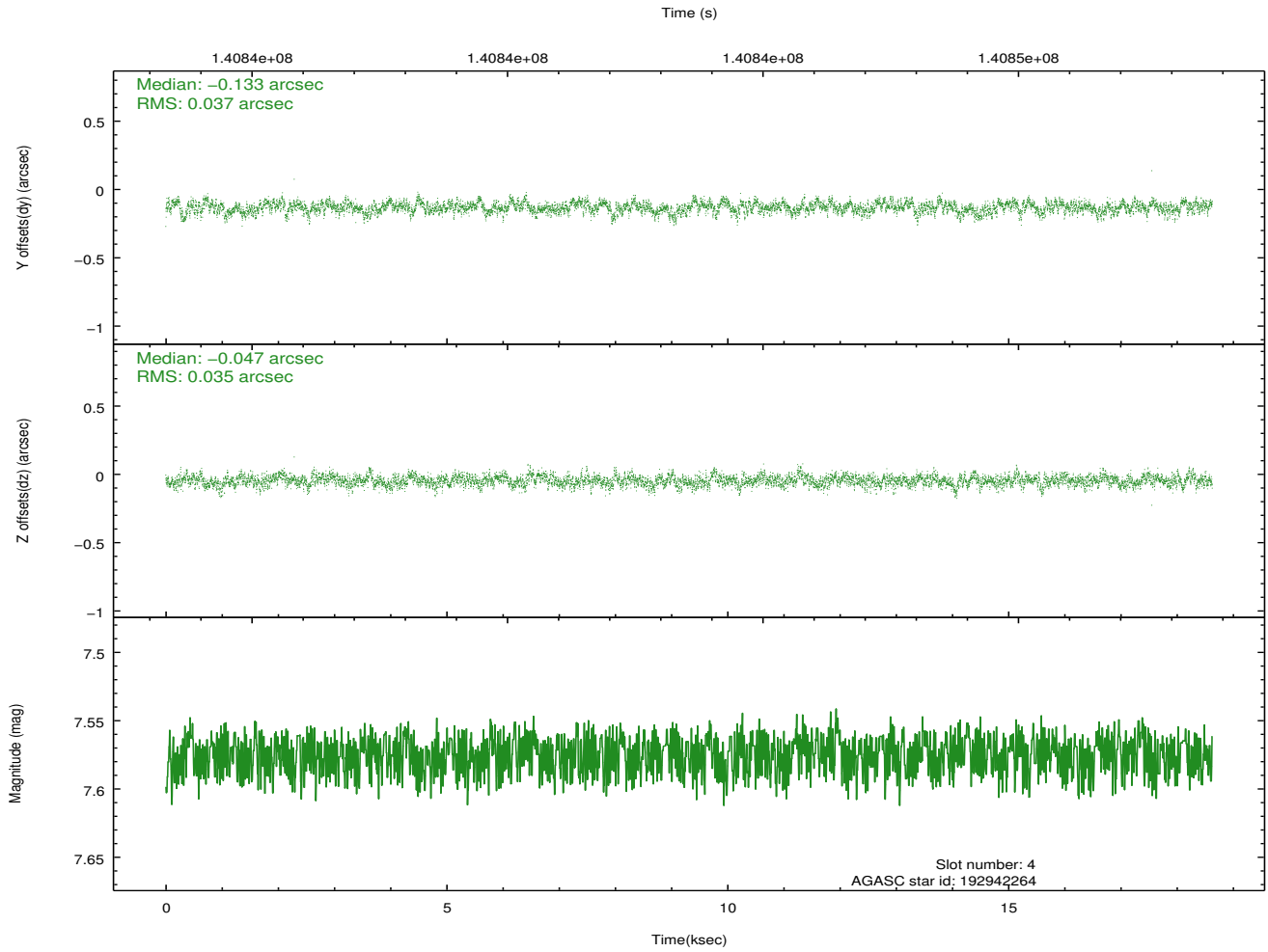
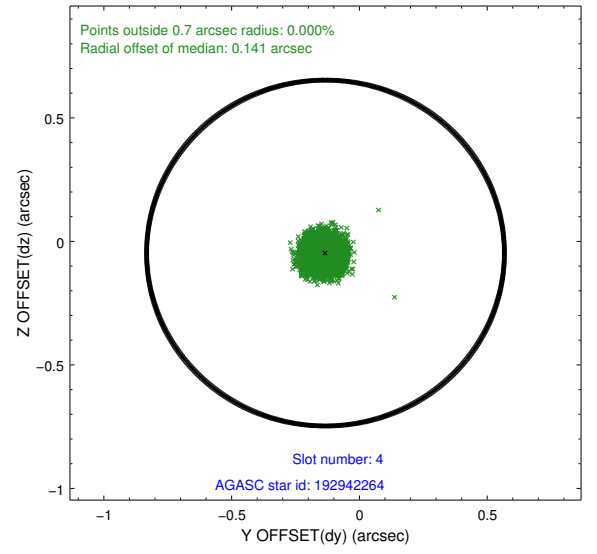
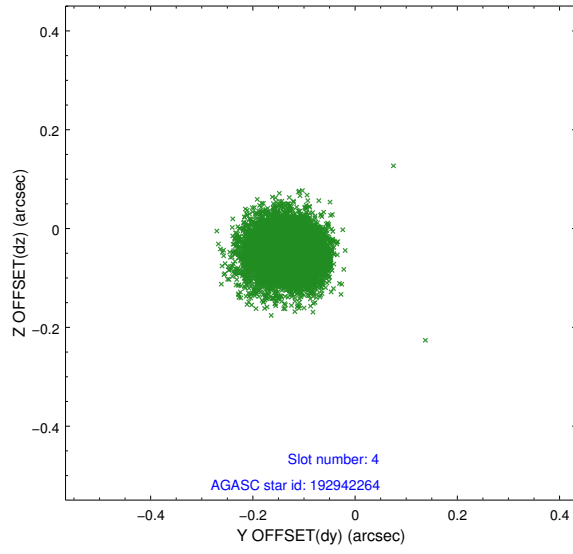
slot	status	id	mag	n_pts	med_dy	med_dz	dr1	dr2	ra	dec	mean_y	mean_z
0	FID	HRC-I-1	6.98	4544	0.012	0.006	0.015	0.028	0.000000	0.000000	-758.19	-1293.85
1	FID	HRC-I-2	7.02	4544	0.065	-0.035	0.014	0.032	0.000000	0.000000	854.33	-1295.72
2	FID	HRC-I-3	7.07	4543	0.045	-0.064	0.022	0.041	0.000000	0.000000	-1186.50	1010.35
3	GUIDE	192941080	7.38	9088	-0.258	-0.112	0.062	0.100	213.765305	19.900558	-1691.11	-1902.61
4	GUIDE	192942264	7.57	9088	-0.133	-0.047	0.054	0.088	213.489145	19.580360	-207.51	-1959.37
5	GUIDE	192811280	9.18	9082	0.185	-0.104	0.102	0.166	213.028690	19.054237	2246.74	-2079.21
6	GUIDE	192943728	9.12	9084	0.080	0.161	0.071	0.116	213.833075	18.582958	1962.27	1132.25
7	GUIDE	192944336	9.15	9085	0.126	0.103	0.072	0.119	213.613483	18.965688	1310.28	-293.44

2.4 Star Slots

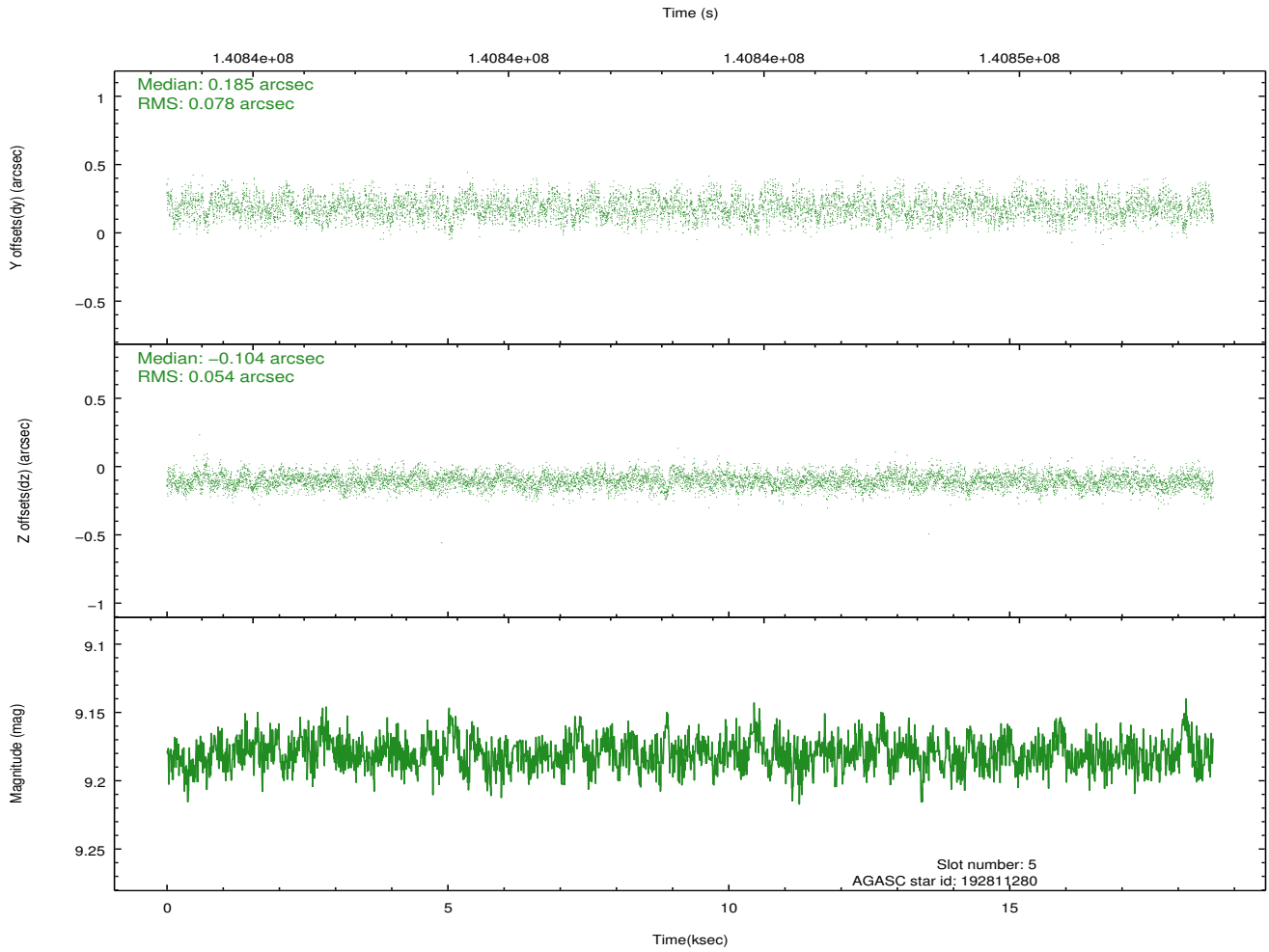
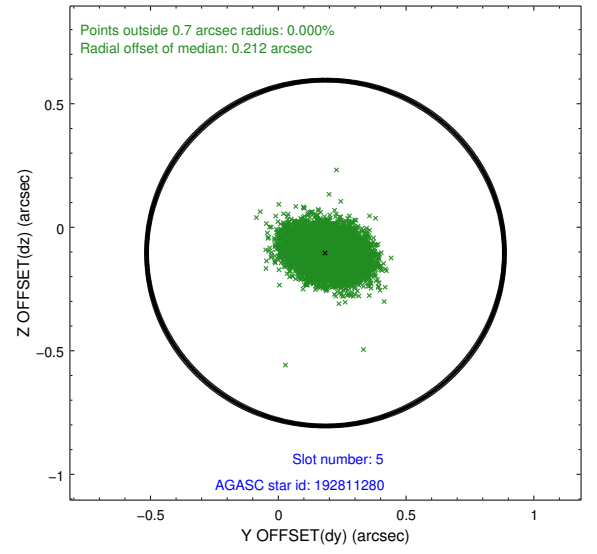
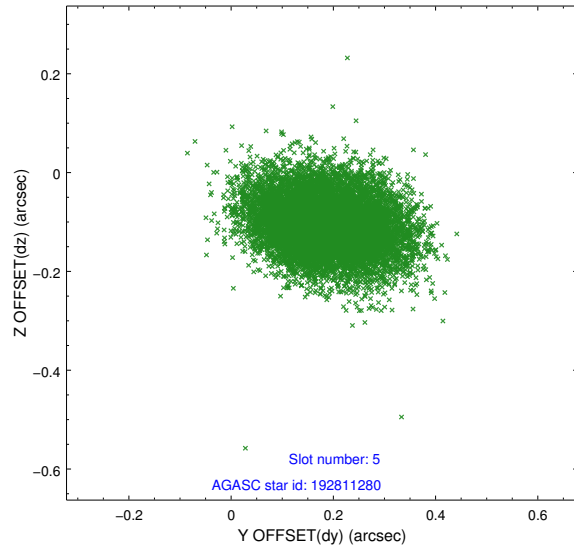
2.4.1 Slot 3



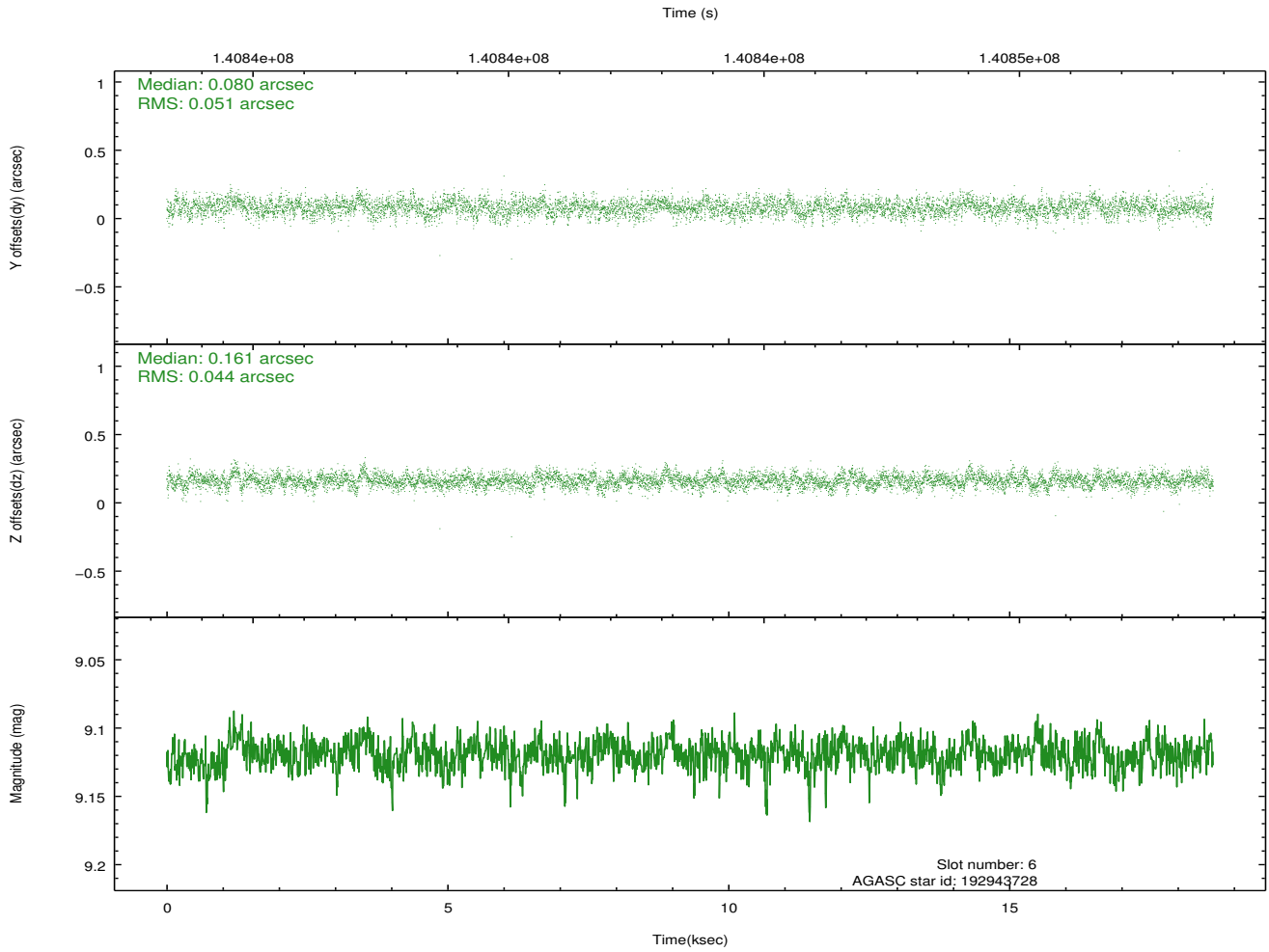
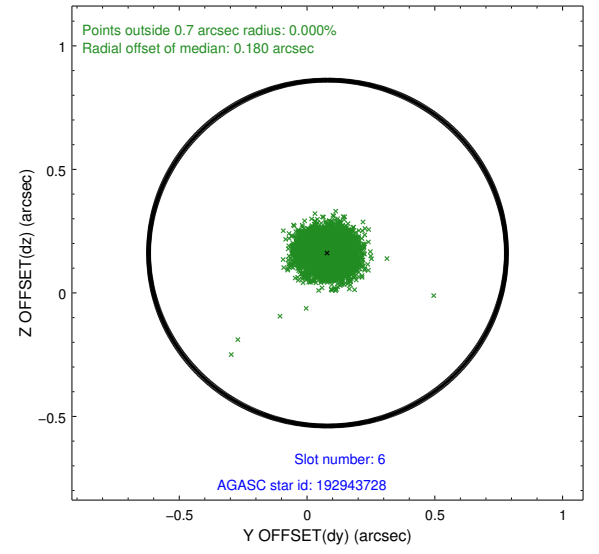
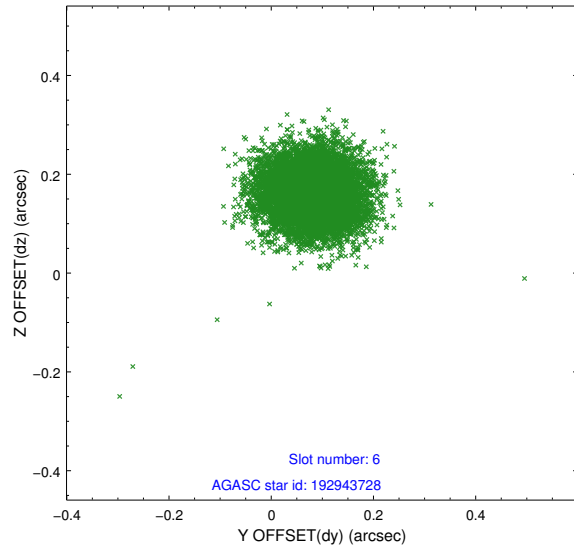
2.4.2 Slot 4



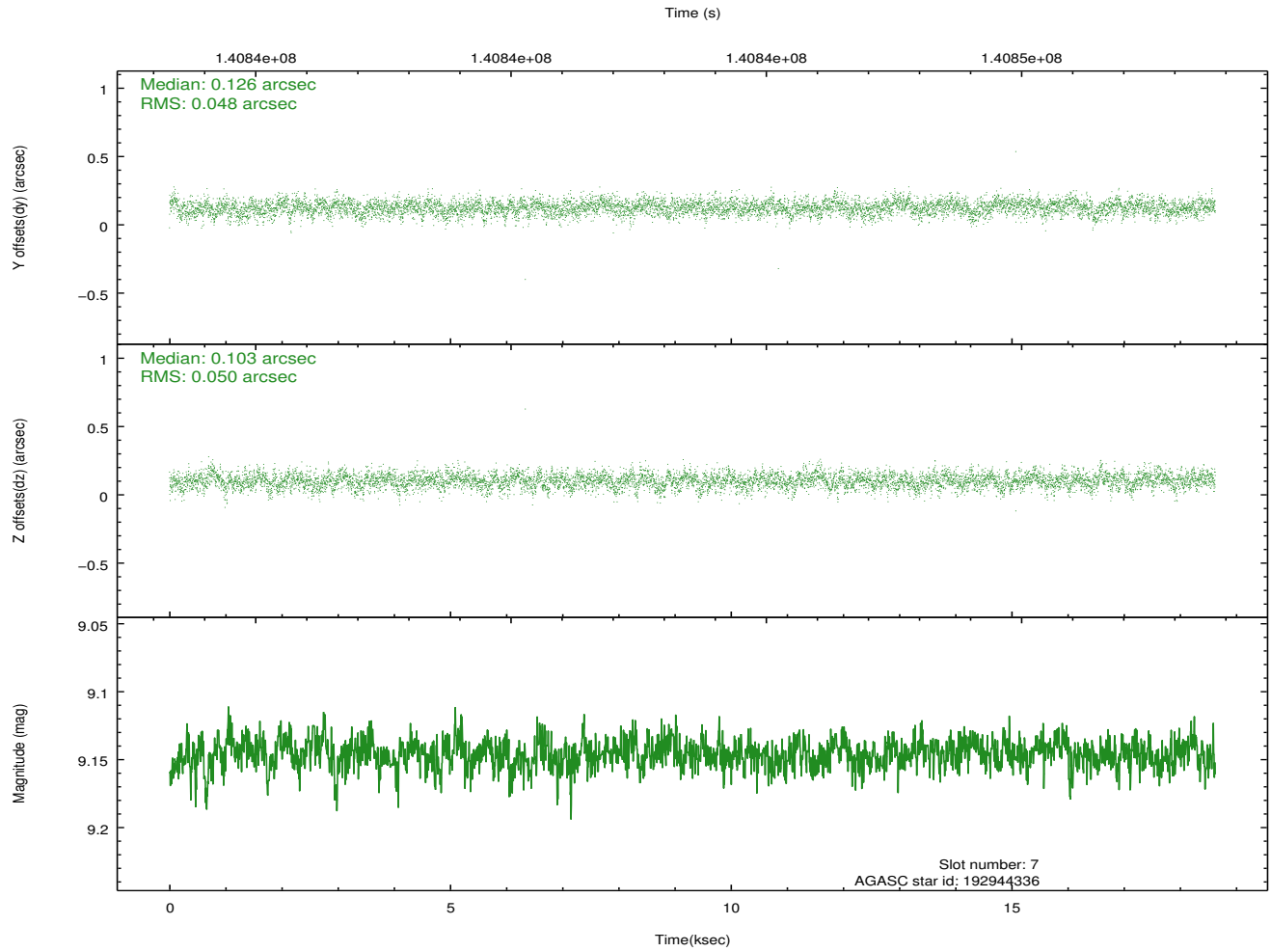
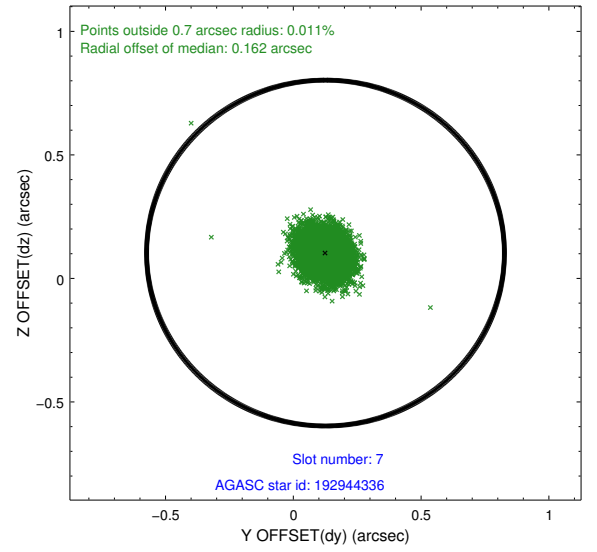
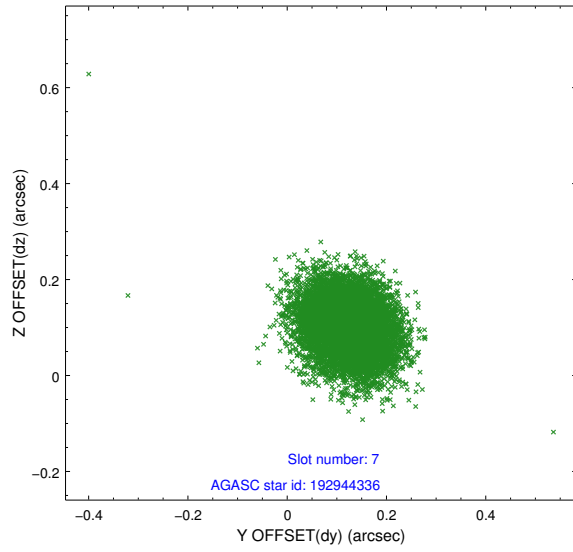
2.4.3 Slot 5



2.4.4 Slot 6

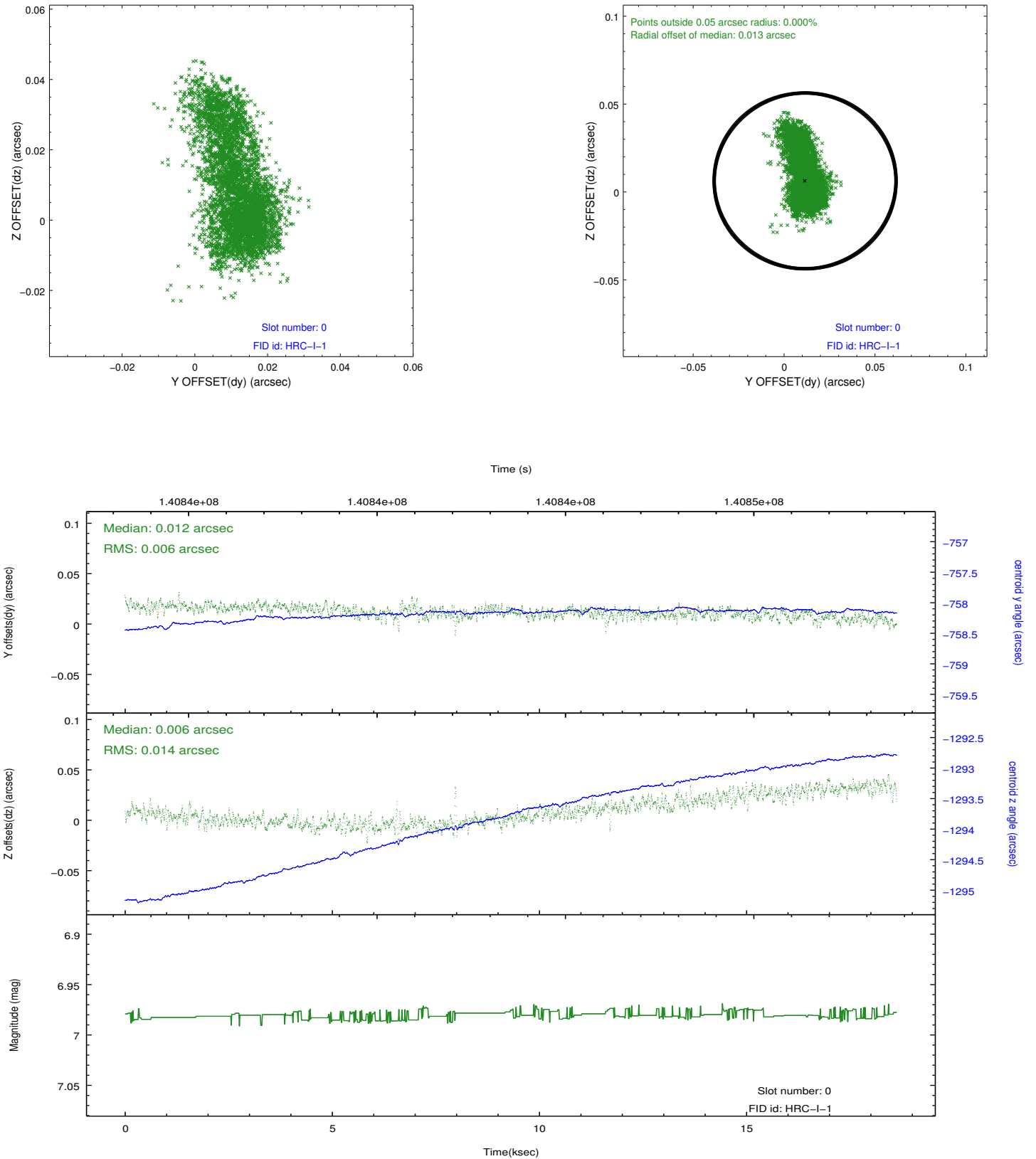


2.4.5 Slot 7

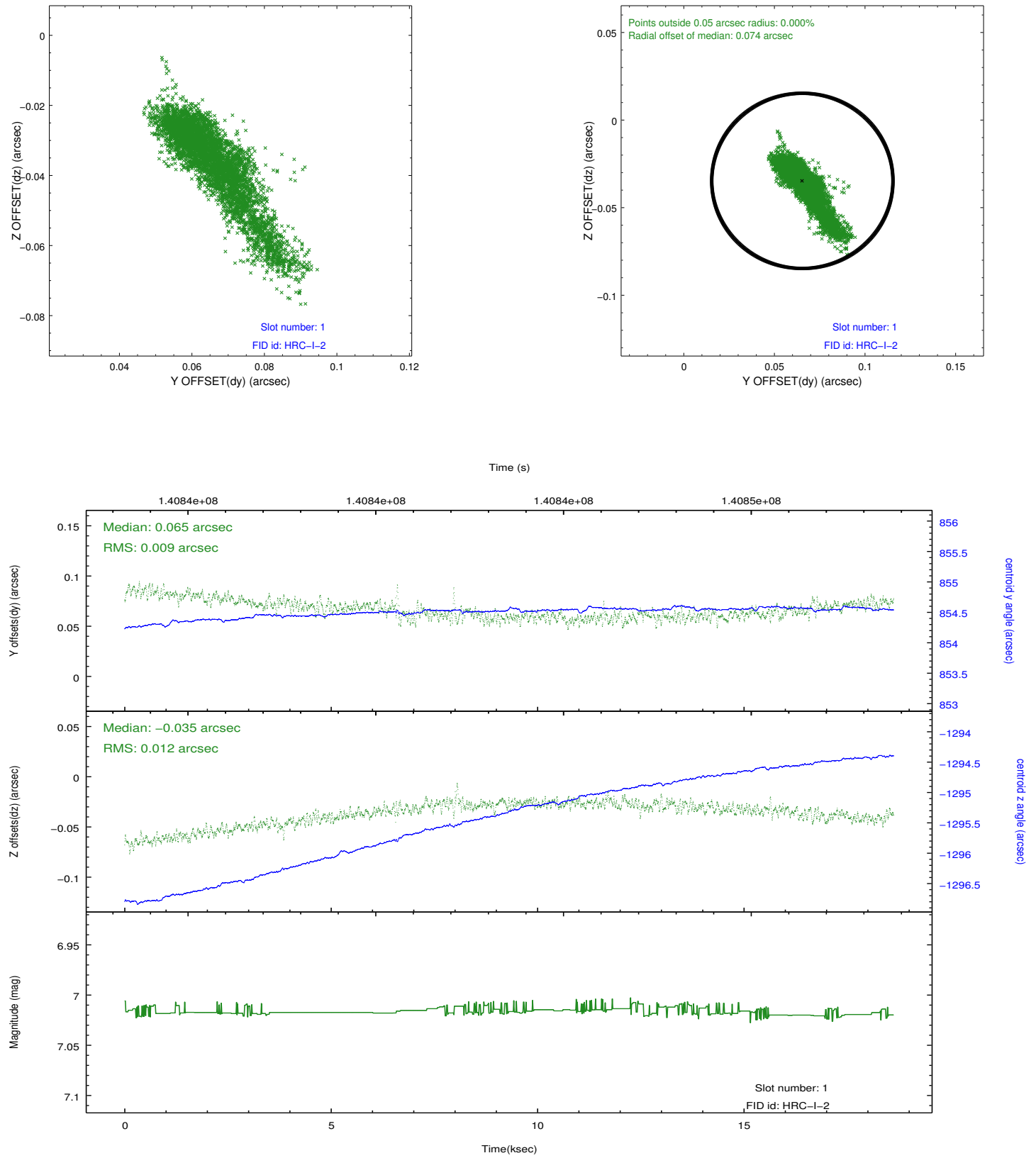


2.5 FID Slots

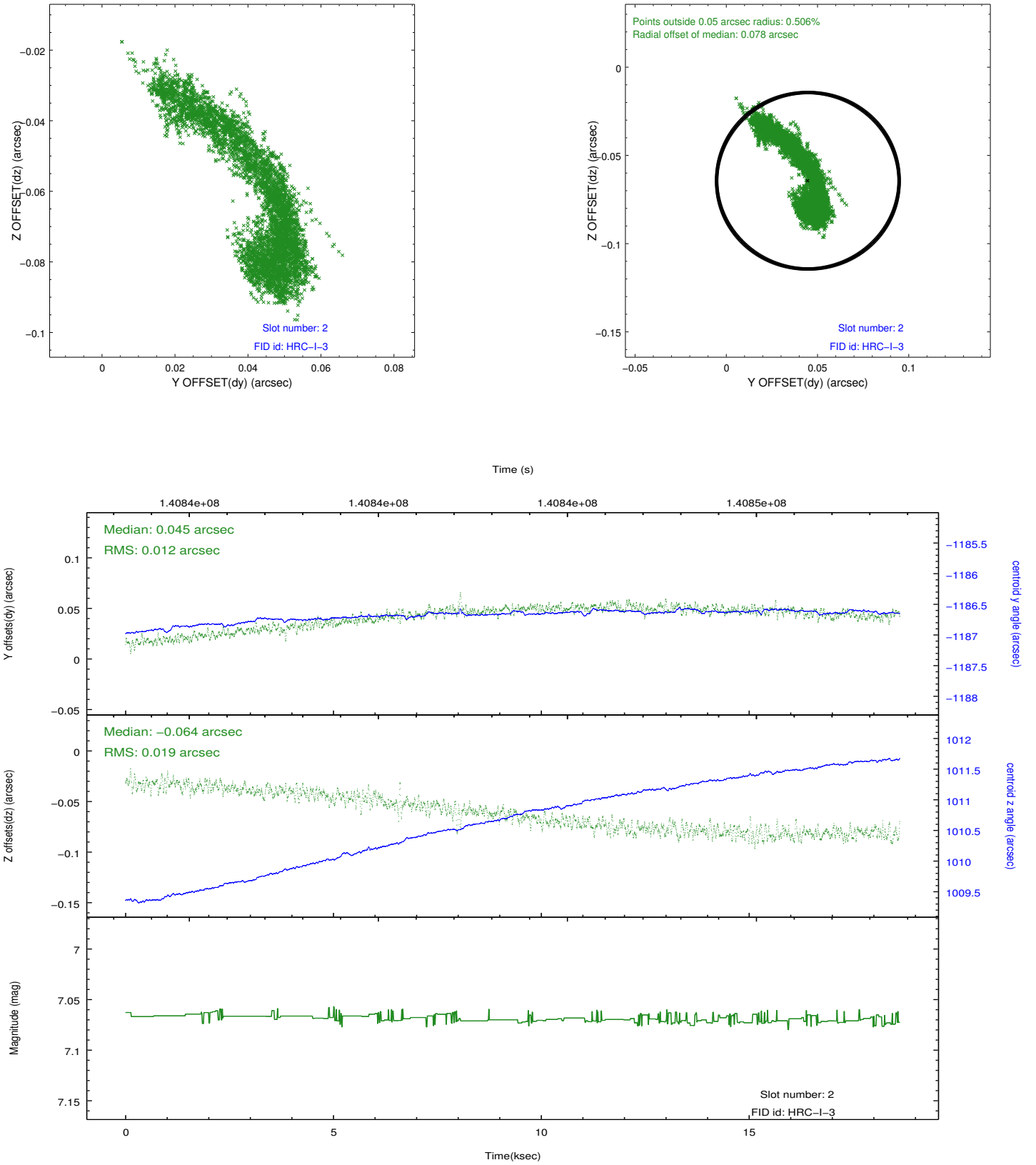
2.5.1 Slot 0



2.5.2 Slot 1



2.5.3 Slot 2



A Summary

A.1 Status

V&V Scientist	Jen Lauer
V&V Date (YYYY-MM-DD)	2012.10.18
V&V Edition	1
V&V Disposition and Status	OK
V&V Charge Time	18.482

A.2 Comments

Joint Proposal: HST