

V&V Reference Report

L2 ASCDS Version : 7.6.8.1

Observation 2550 - L2 Version 001
Chandra X-Ray Center

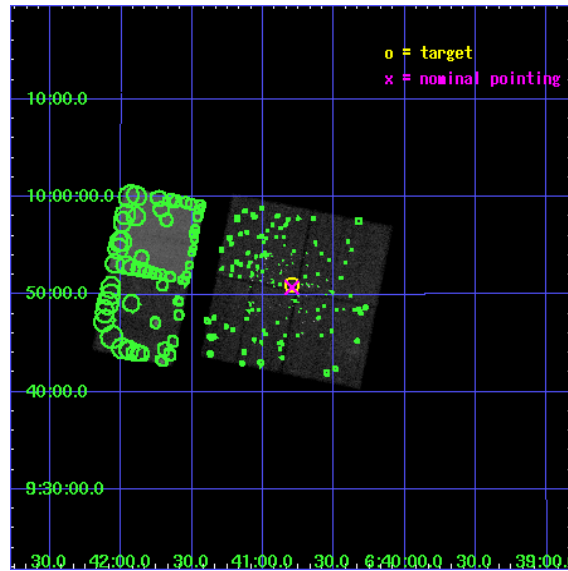
L2 Processing Date : Aug 31 2006

Contents

1	Front	2
2	OBI	3
2.1	OBI	3
2.1.1	Images	3
2.1.2	Bias	3
2.1.3	Parameters	4
2.1.4	Events	4
2.2	Compared Parameters	5
2.3	Aspect	6
2.4	Star Slots	9
2.4.1	Slot 3	9
2.4.2	Slot 4	10
2.4.3	Slot 5	11
2.4.4	Slot 6	12
2.4.5	Slot 7	13
2.5	FID Slots	14
2.5.1	Slot 0	14
2.5.2	Slot 1	15
2.5.3	Slot 2	16
3	Point Sources	17
A	Summary	18
A.1	Status	18
A.2	Comments	18

1 Front

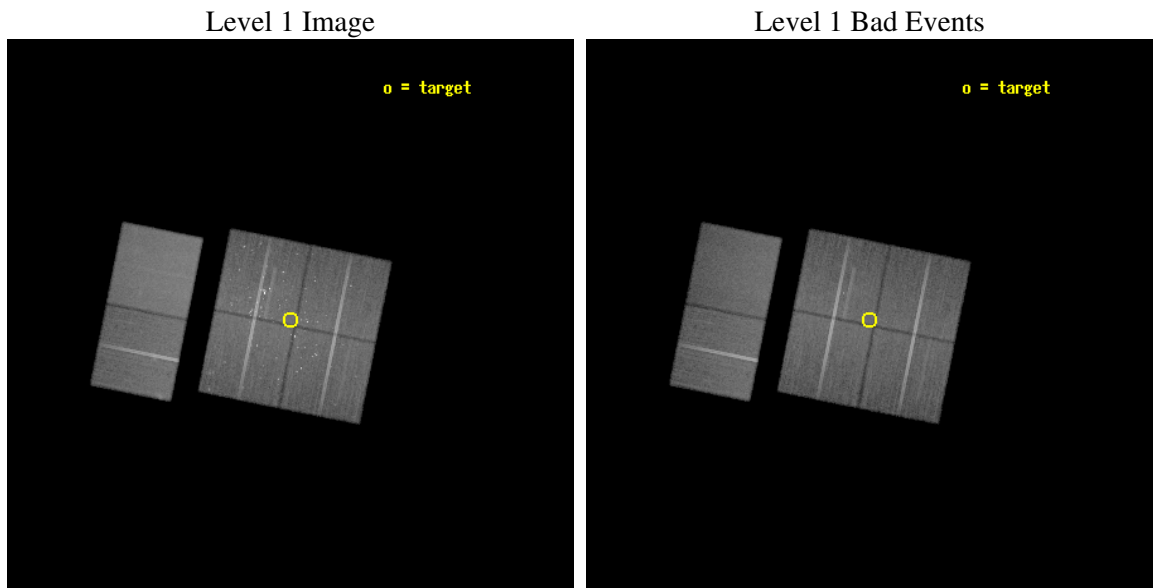
seq_num	200158
obs_id	2550
title	THE AGE-ROTATION-ACTIVITY RELATION IN LATE-TYPE STARS BETWEEN ~1-10 MYR
observer	Dr. John Stauffer
object	NGC 2264
dtcycle	0
cycle	P
ra_targ	100.2
dec_targ	9.85
ra_nom	100.1990461828
dec_nom	9.8454177555961
roll_nom	281.37148265847
revision	2
ontime	48752.000045404
livetime	48134.672865899
ontime0	48752.000045404
ontime1	48752.000045404
ontime2	48745.518064976
ontime3	48752.000045404
ontime6	48752.000045404
ontime7	48752.000045404
l2events	365441



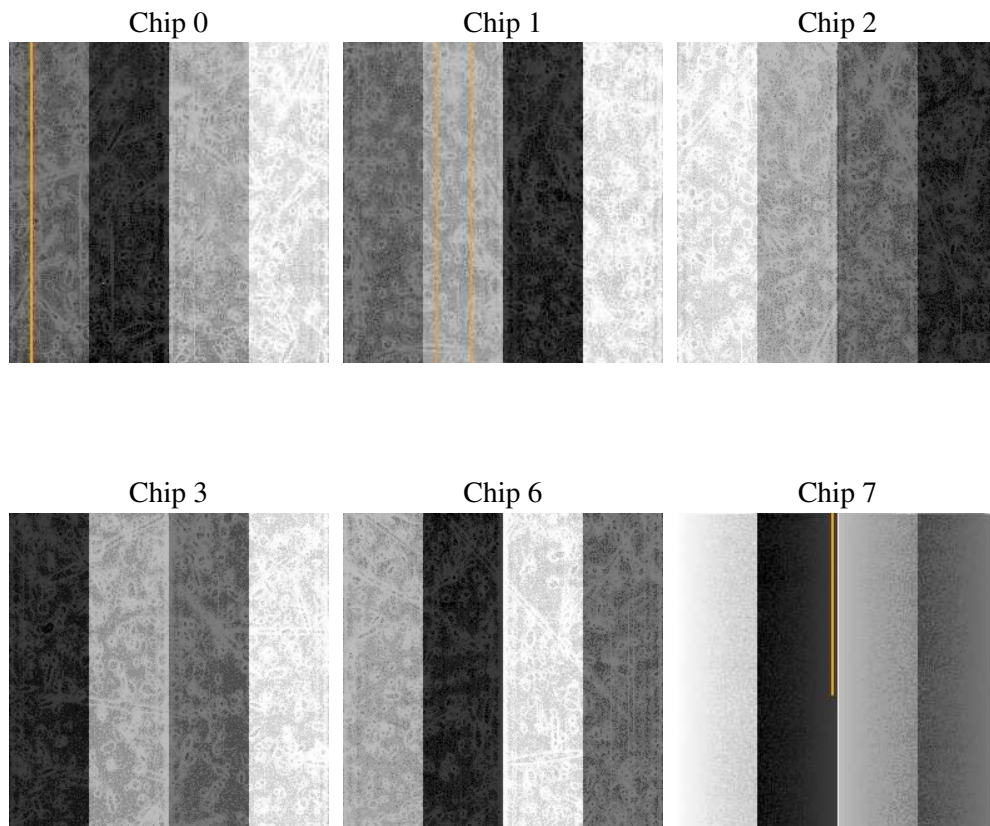
2 OBI

2.1 OBI

2.1.1 Images



2.1.2 Bias



2.1.3 Parameters

obi_num	0
ascdsver	7.6.8.1
caldbver	3.2.3
date	2006-08-31T18:26:06
revision	2

sched_exp_time	49000.000000
ontime	48757.707647413
ontime0	48760.948667496
ontime1	48760.948667496
ontime2	48751.225647062
ontime3	48757.707647413
ontime6	48757.707647413
ontime7	48757.707647398
l1events	2033282

2.1.4 Events

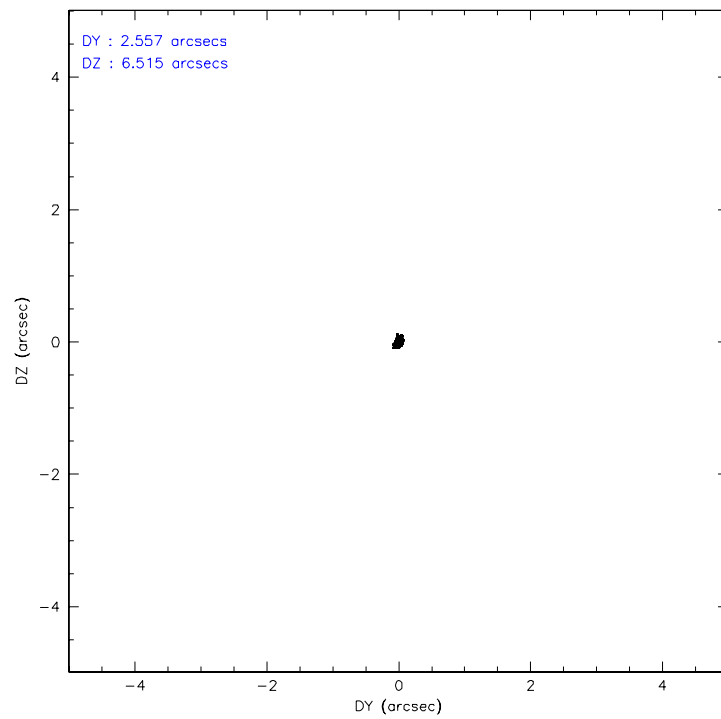
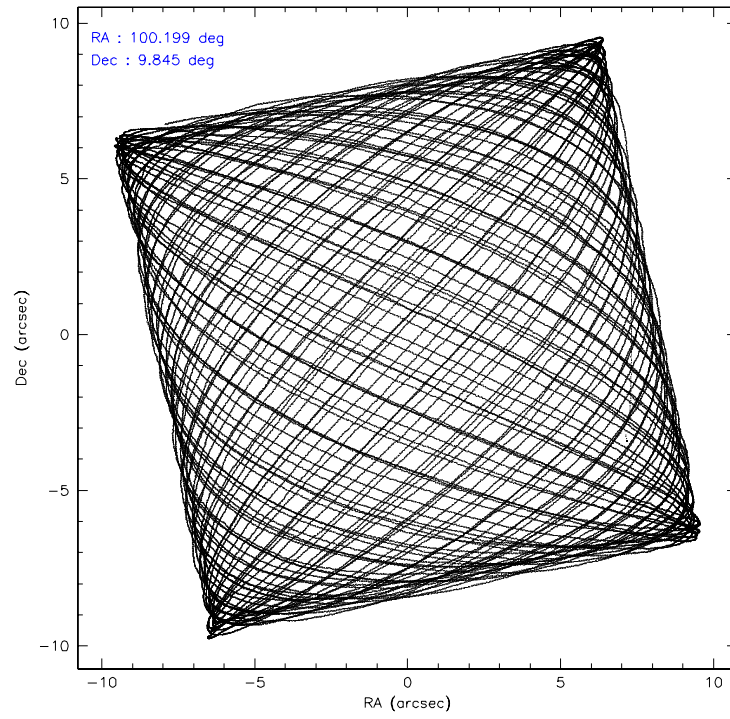
	ccd 0	ccd 1	ccd 2	ccd 3	ccd 6	ccd 7
level 1 events	303454	303623	325081	343386	335660	422078
rejected events	255526	258342	283586	279904	296030	260722
rejected %	84%	85%	87%	81%	88%	61%

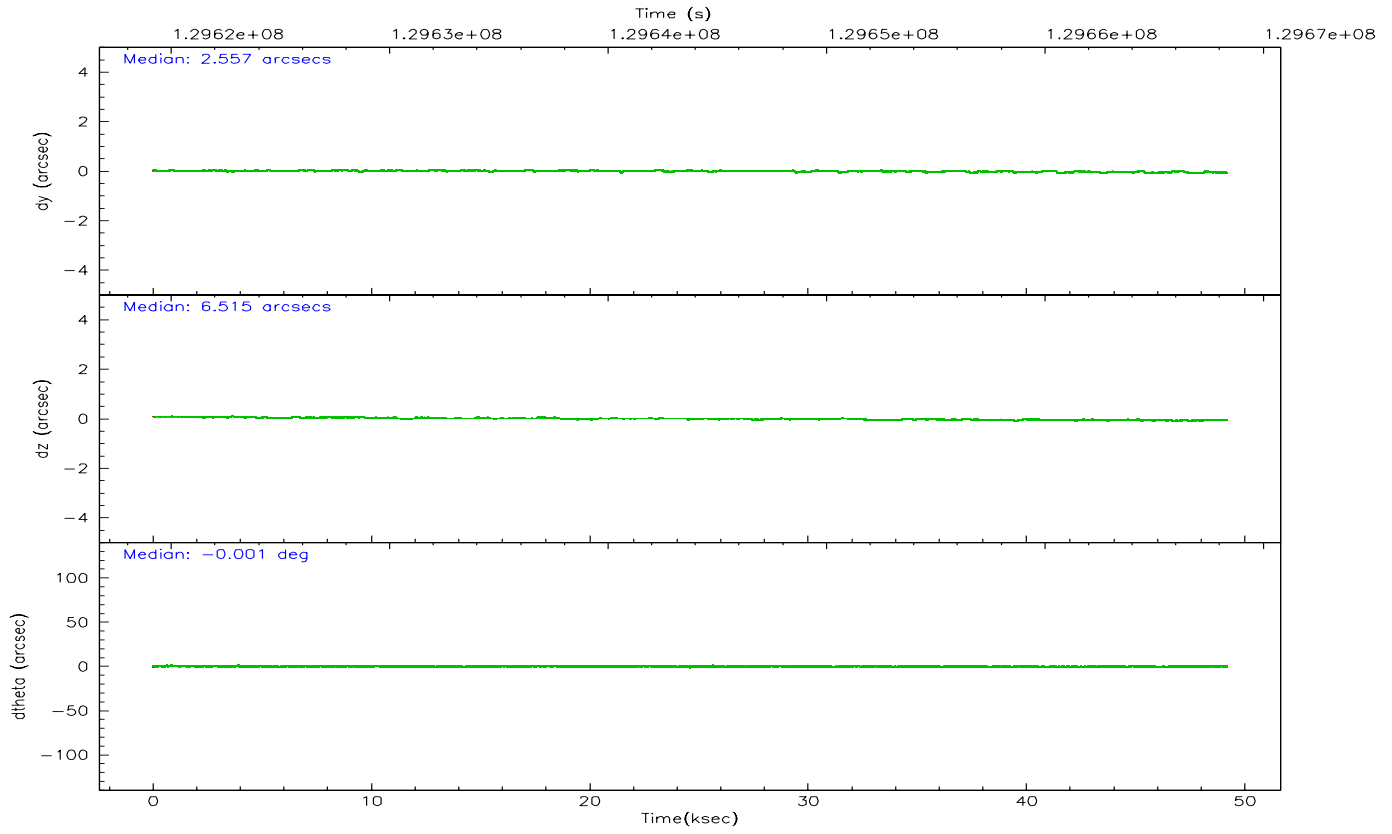
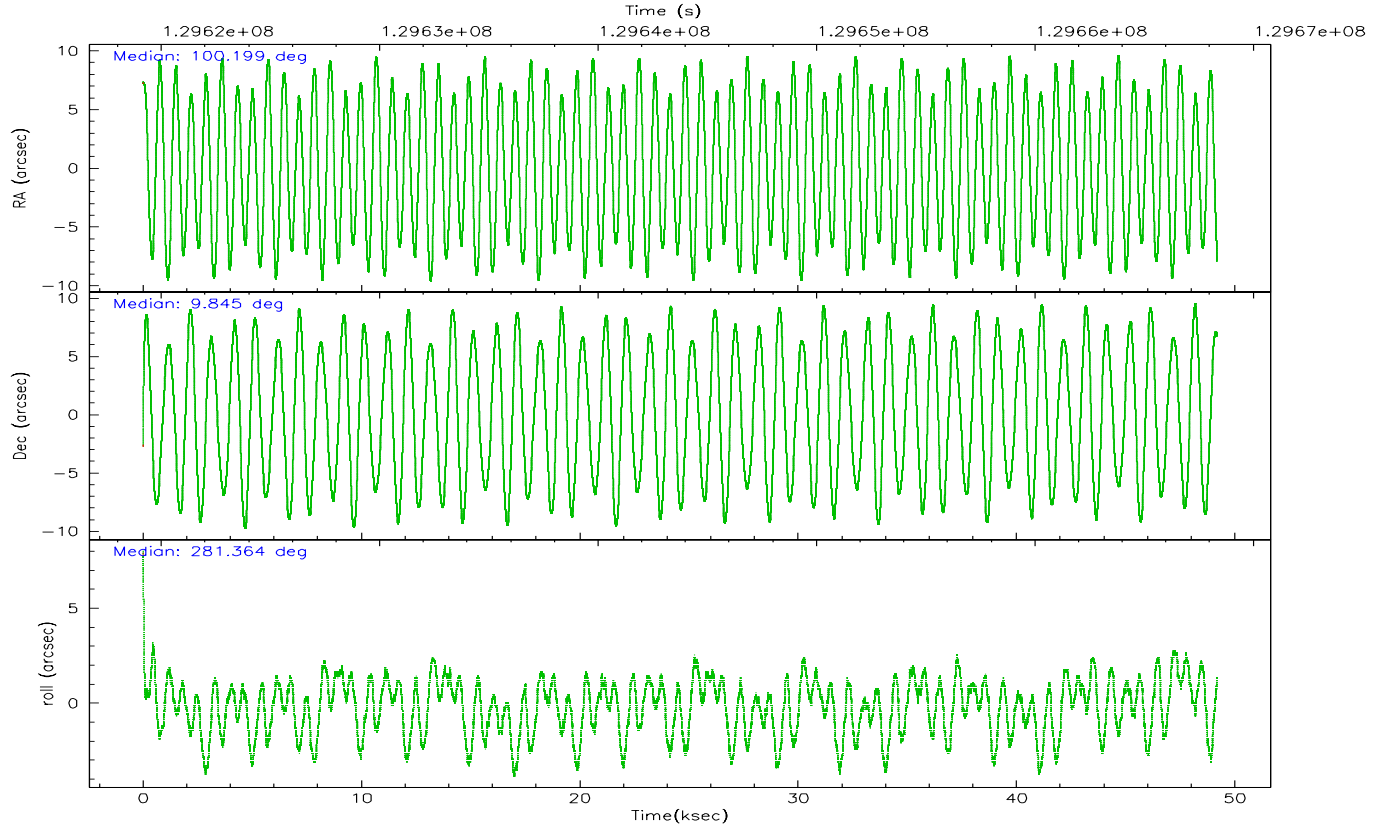
	ccd 0	ccd 1	ccd 2	ccd 3	ccd 6	ccd 7
grade 0 events	24462	20541	19219	39013	16530	9498
	8%	6%	5%	11%	4%	2%
grade 1 events	280	195	163	558	177	275
	0%	0%	0%	0%	0%	0%
grade 2 events	8861	8496	8679	9704	7985	39582
	2%	2%	2%	2%	2%	9%
grade 3 events	4011	4217	3533	3974	3806	8283
	1%	1%	1%	1%	1%	1%
grade 4 events	3706	4268	3565	4052	3645	8005
	1%	1%	1%	1%	1%	1%
grade 5 events	11787	12918	11004	12970	13853	27761
	3%	4%	3%	3%	4%	6%
grade 6 events	6897	7764	6507	6749	7670	96012
	2%	2%	2%	1%	2%	22%
grade 7 events	243450	245224	272411	266366	281994	232662
	80%	80%	83%	77%	84%	55%

2.2 Compared Parameters

Parameter	Planned	Actual	Parameter	Planned	Actual
Instrument	ACIS	ACIS	Obspar format version number	6	6
Detector	ACIS-012367	ACIS-012367	Obspar file type	PREDICTED	ACTUAL
Grating	NONE	NONE	Obspar update status	NONE	UPDATED
Data mode	FAINT	FAINT	On-chip summing requested	N	N
Observation mode	POINTING	POINTING	Subarray requested	NONE	NONE
Pointing RA	100.180599	100.1990461827995	Alternating exposures requested	N	N
Pointing Dec	9.865934	9.845417755596081	Primary exposure time	0.000000	3.2
Pointing Roll	281.165956	281.3714826584651			
SIM focus pos (mm)	-0.782348	-0.7809083437167272			
SIM defocus (mm)	0	0.001439871863259334			
SIM translation stage pos (mm)	-233.592463	-233.5874344608287			
SIM translation stage offset (mm)	0	-0.005018542100998502			
Observation start time	129619349.184000	129618647.97325			
Observation start date	2002-02-09T05:21:25	2002-02-09T05:10:47			
Observation end time	129668349.184000	129668924.22527			
Observation end date	2002-02-09T18:58:05	2002-02-09T19:08:44			
Read mode	TIMED	TIMED			

2.3 Aspect



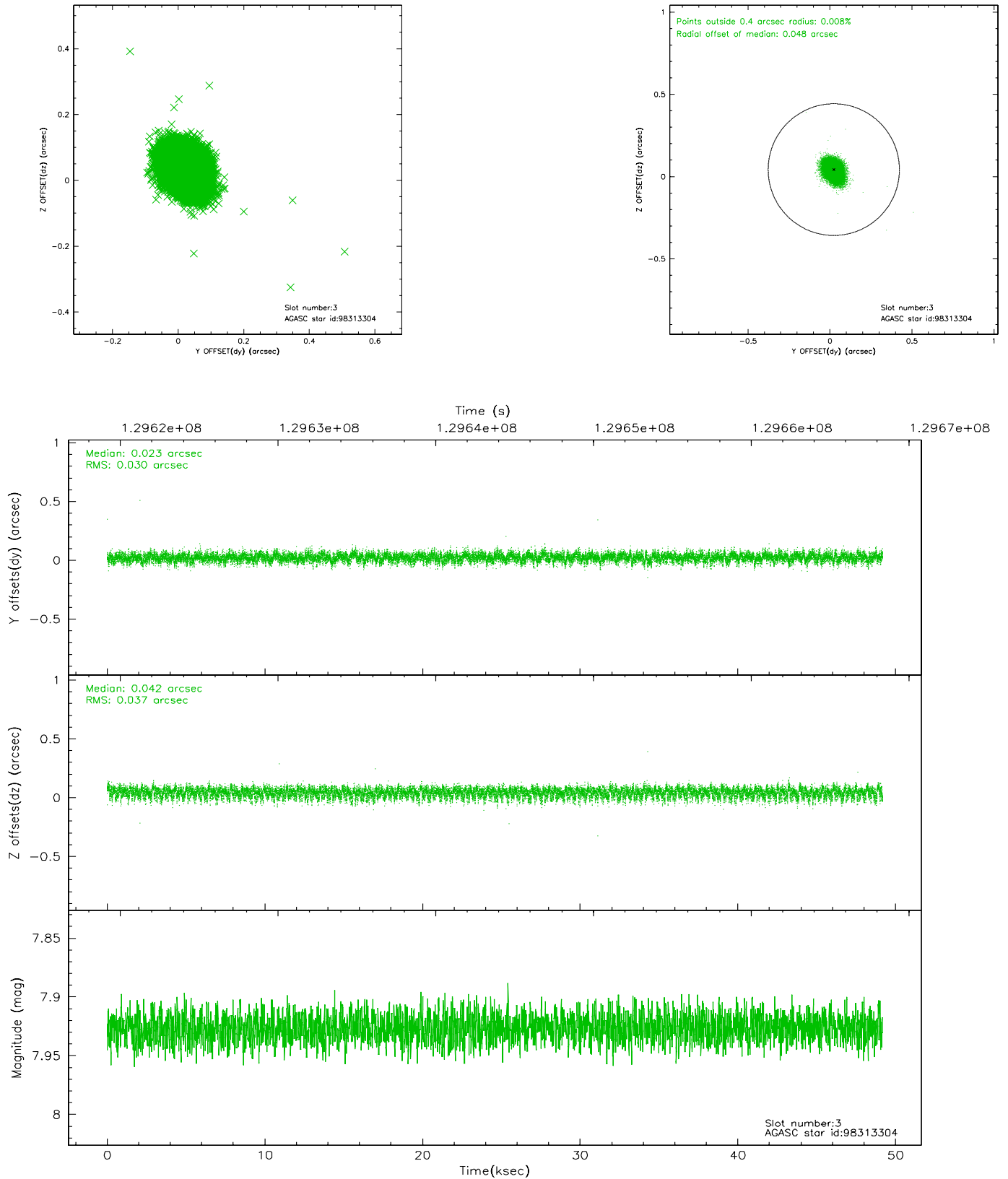


Slot Statistics

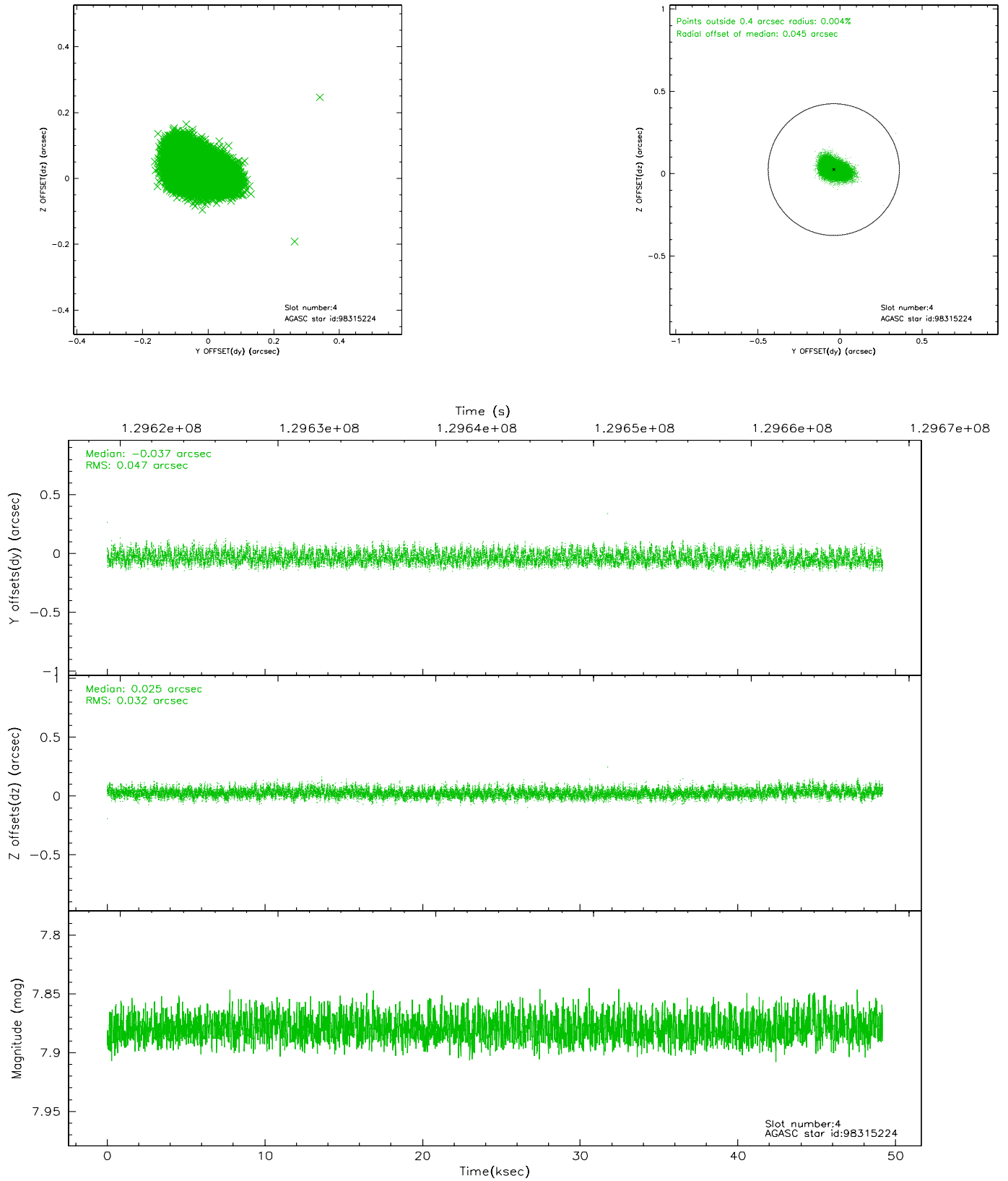
slot	status	id	mag	n_pts	med_dy	med_dz	dr1	dr2	ra	dec	mean_y	mean_z
0	FID	ACIS-I-1	7.25	11995	-0.025	0.035	0.007	0.011	0.000000	0.000000	937.21	-829.88
1	FID	ACIS-I-5	7.24	11994	-0.014	0.039	0.006	0.010	0.000000	0.000000	-1810.86	1067.67
2	FID	ACIS-I-6	7.26	11996	-0.052	-0.004	0.007	0.012	0.000000	0.000000	402.79	1712.07
3	GUIDE	98313304	7.93	23988	0.023	0.042	0.050	0.082	100.155546	9.595190	939.17	-275.99
4	GUIDE	98315224	7.88	23991	-0.037	0.025	0.061	0.097	100.672922	10.331603	-1308.46	2035.18
5	GUIDE	97793672	8.59	23976	0.136	-0.168	0.081	0.134	99.657664	9.160198	2131.84	-2315.19
6	GUIDE	98315960	8.75	23986	-0.056	0.068	0.070	0.111	100.661368	10.107192	-523.46	1839.83
7	GUIDE	98315496	9.04	23975	-0.067	0.035	0.075	0.119	99.895895	10.240611	-1518.94	-728.50

2.4 Star Slots

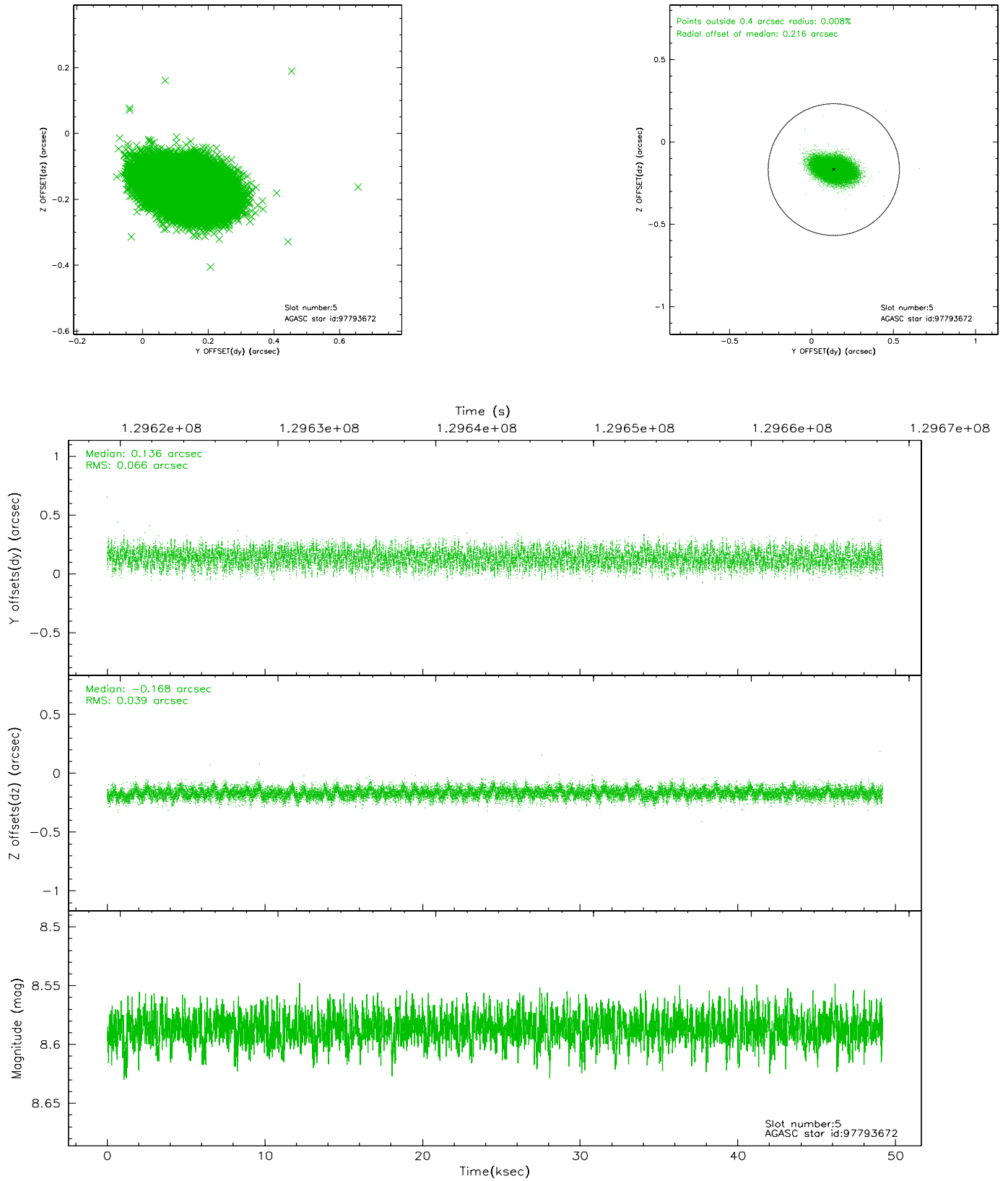
2.4.1 Slot 3



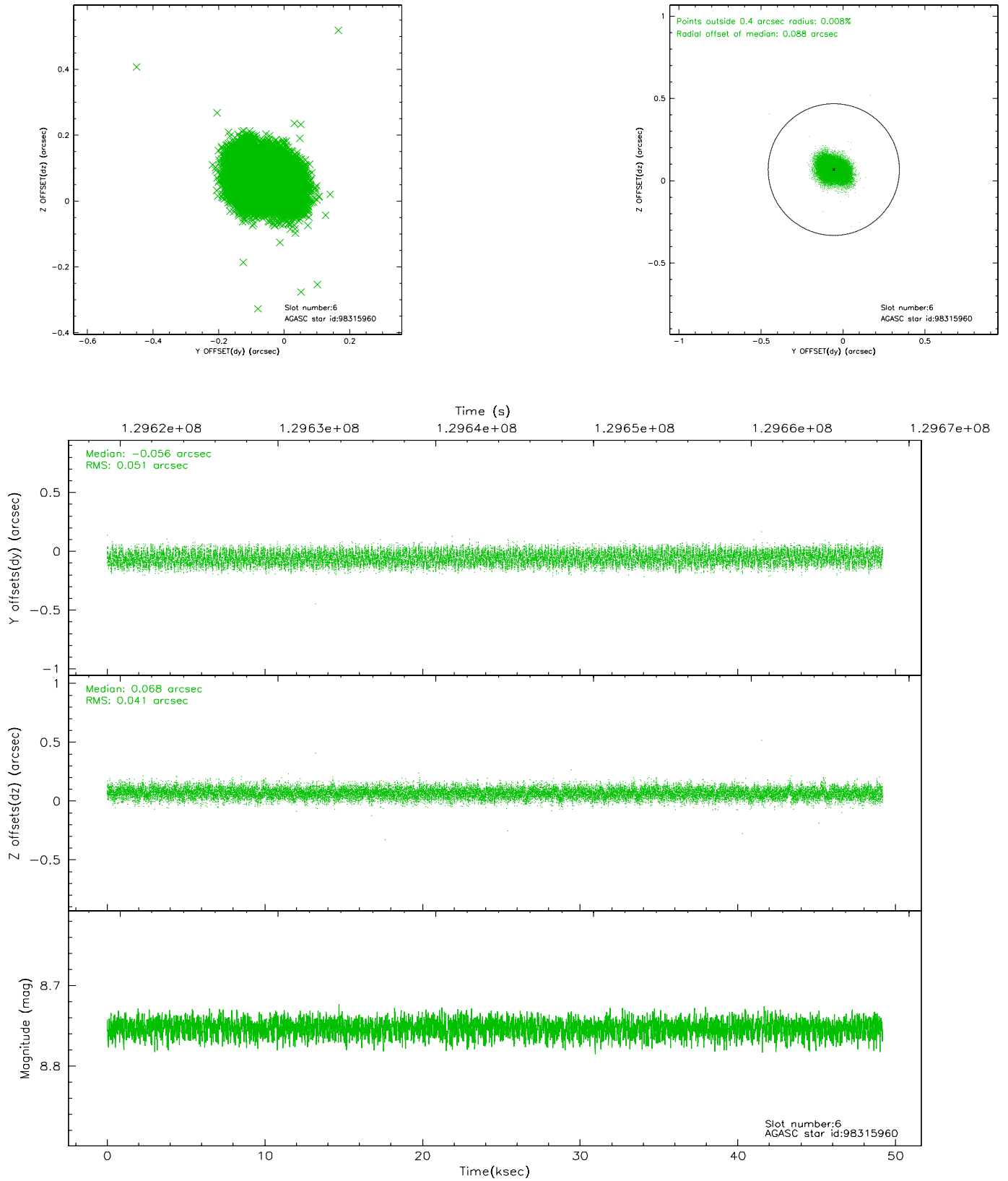
2.4.2 Slot 4



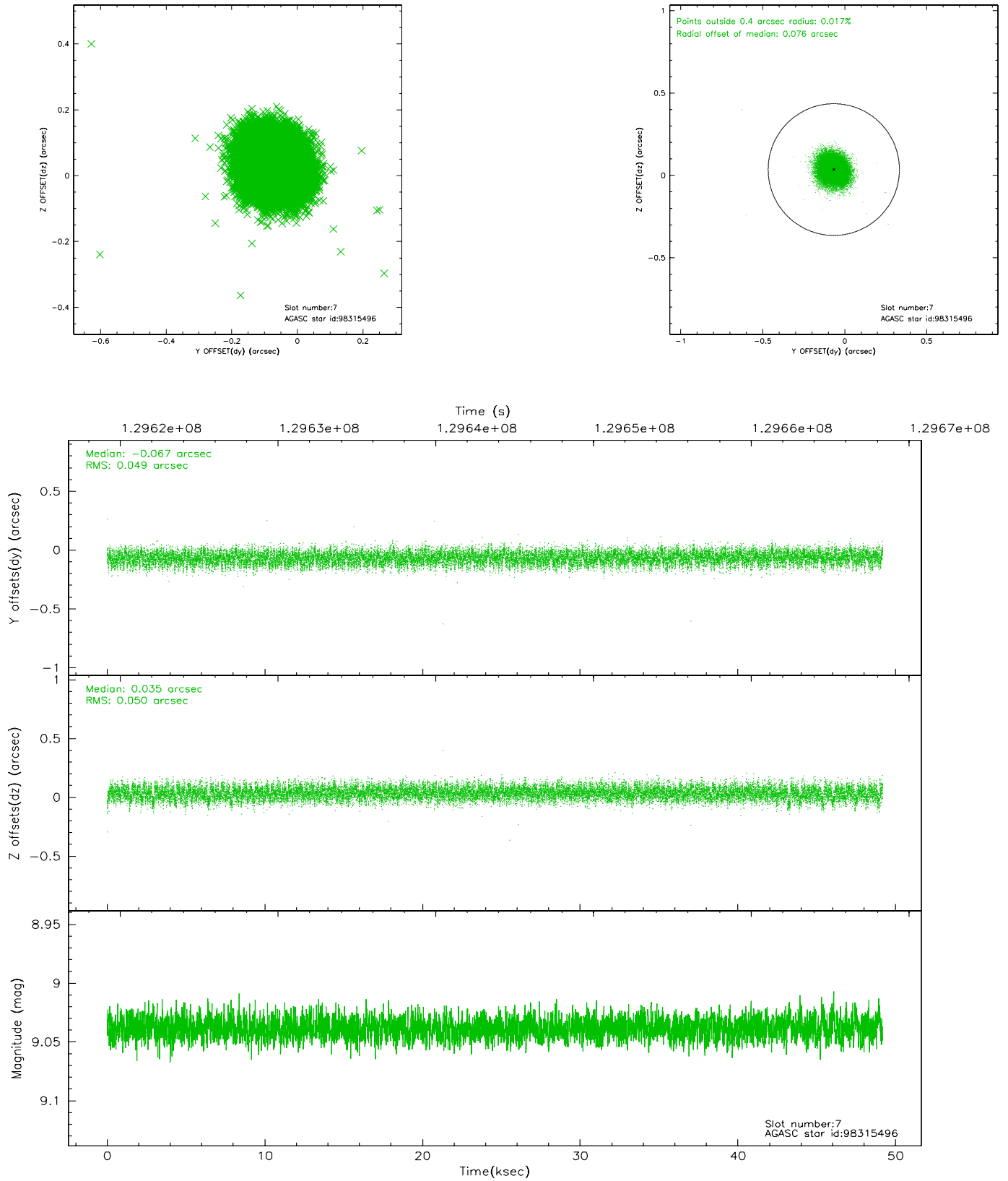
2.4.3 Slot 5



2.4.4 Slot 6

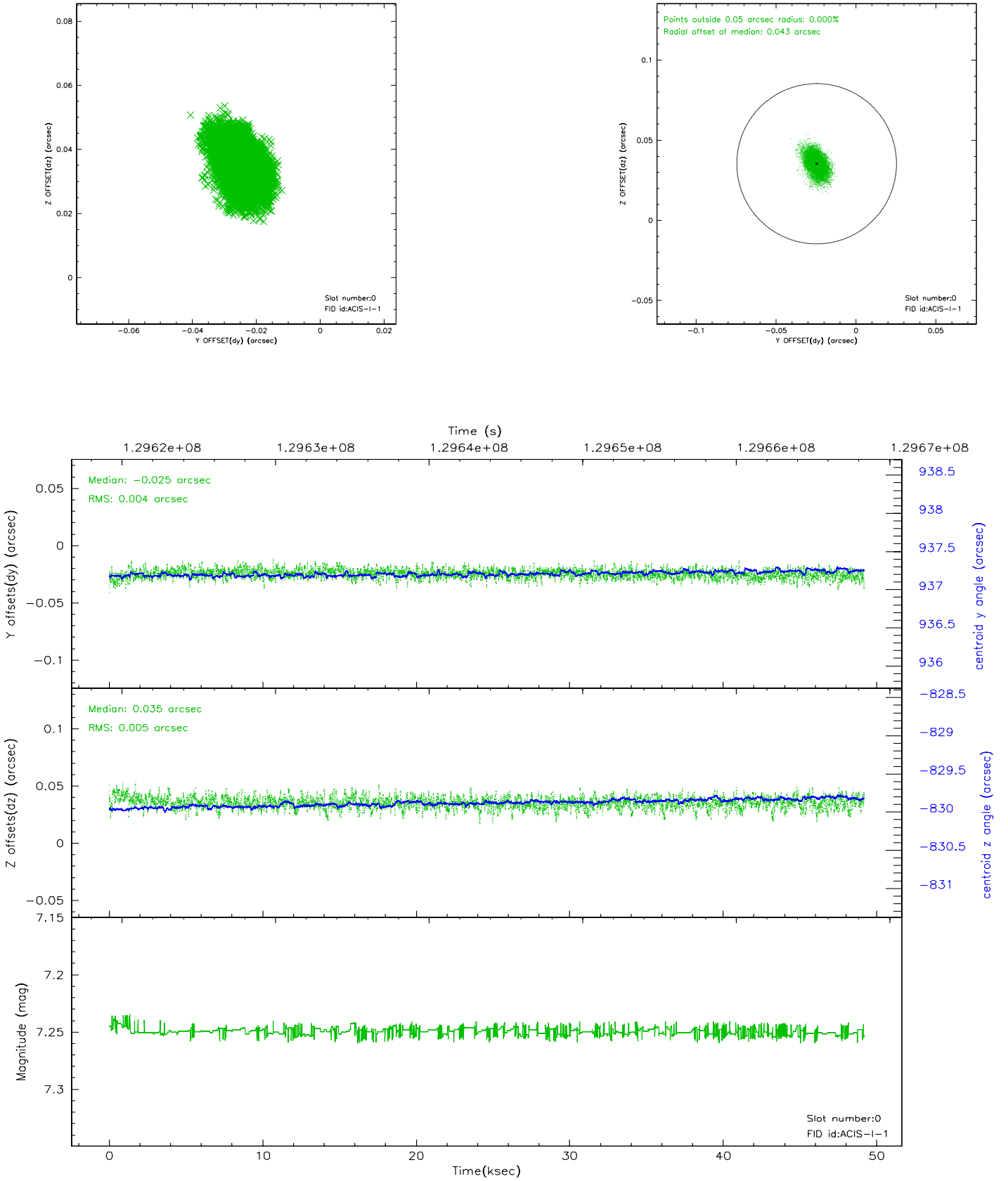


2.4.5 Slot 7

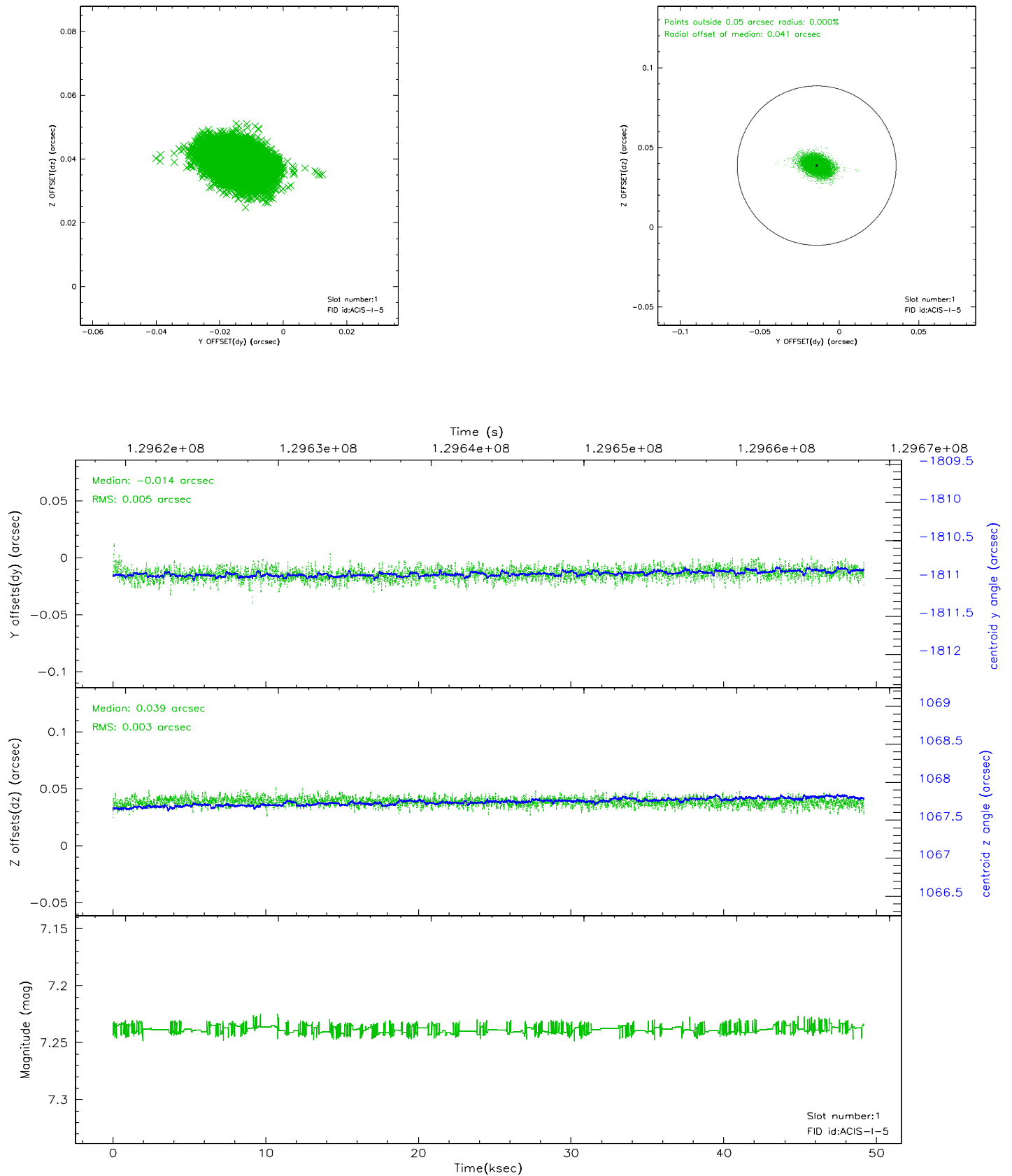


2.5 FID Slots

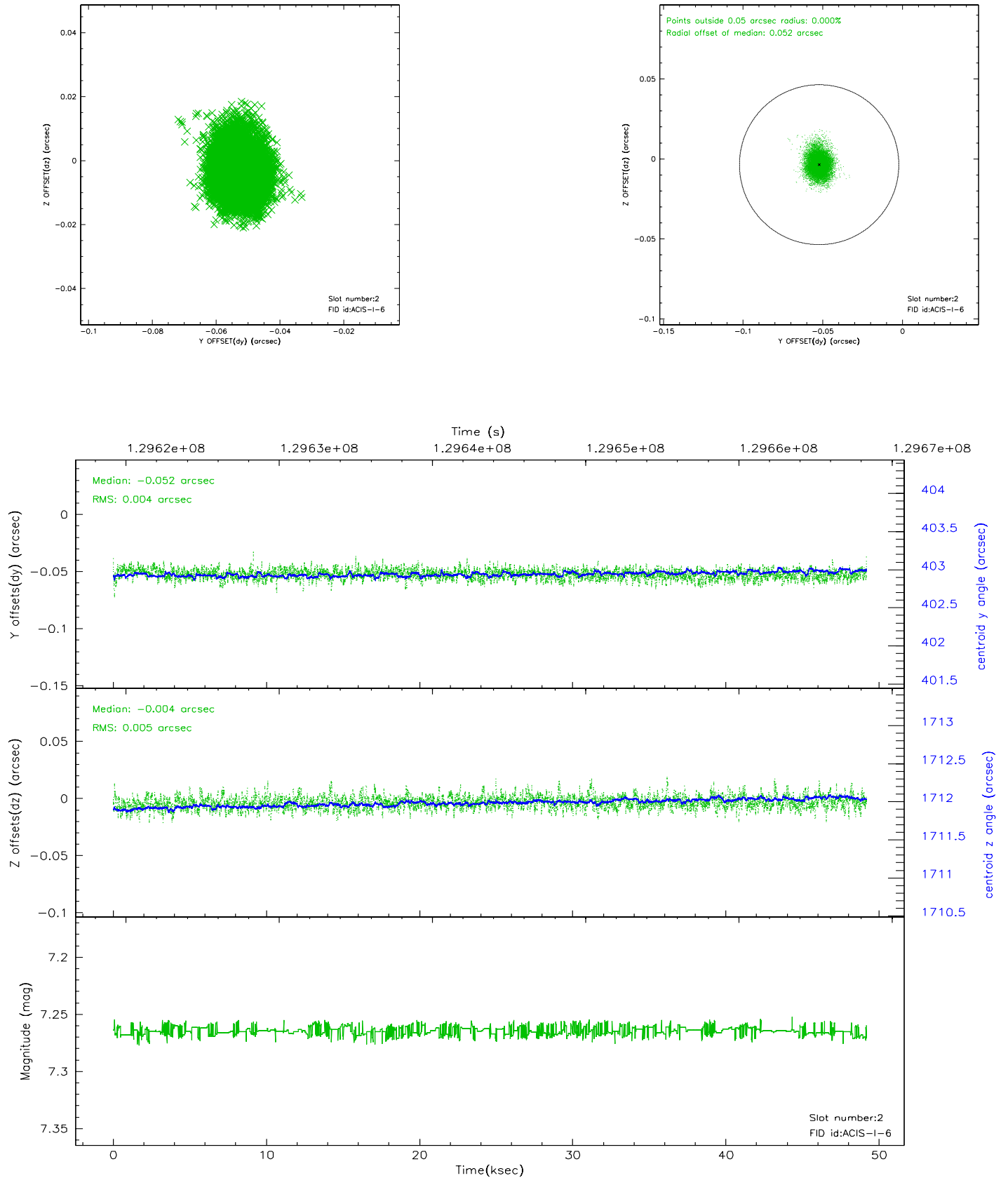
2.5.1 Slot 0



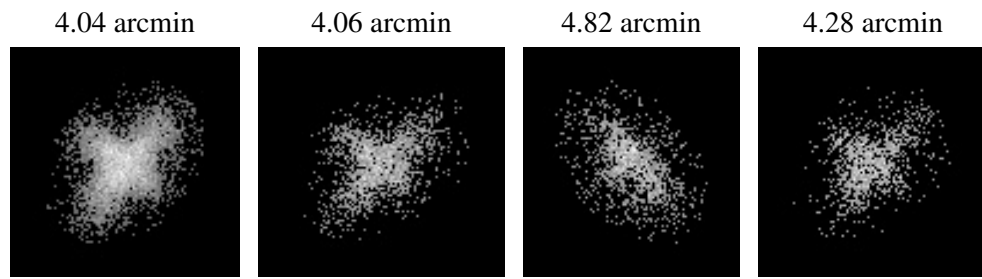
2.5.2 Slot 1



2.5.3 Slot 2



3 Point Sources



A Summary

A.1 Status

V&V Scientist	Doug Morgan
V&V Date (YYYY-MM-DD)	2006.08.31
V&V Edition	1
V&V Disposition and Status	OK
V&V Charge Time	48.755

A.2 Comments