

V&V Reference Report

L2 ASCDS Version : 7.6.8.1

Observation 2545 - L2 Version 001
Chandra X-Ray Center

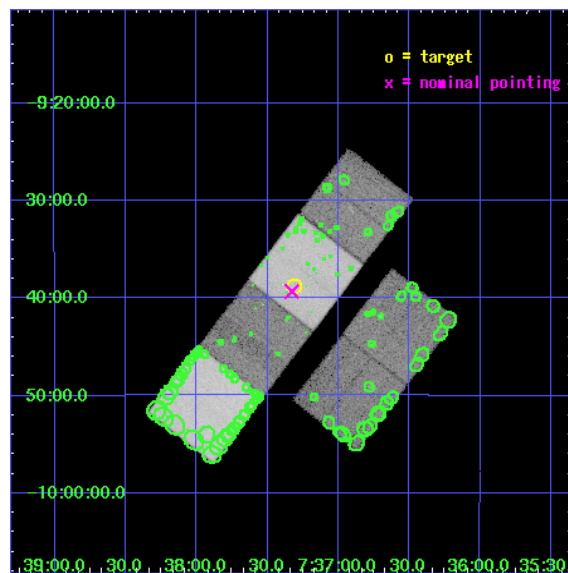
L2 Processing Date : Aug 31 2006

Contents

1	Front	2
2	OBI	3
2.1	OBI	3
2.1.1	Images	3
2.1.2	Bias	3
2.1.3	Parameters	4
2.1.4	Events	4
2.2	Compared Parameters	5
2.3	Aspect	6
2.4	Star Slots	9
2.4.1	Slot 3	9
2.4.2	Slot 4	10
2.4.3	Slot 5	11
2.4.4	Slot 6	12
2.4.5	Slot 7	13
2.5	FID Slots	14
2.5.1	Slot 0	14
2.5.2	Slot 1	15
2.5.3	Slot 2	16
3	Point Sources	17
A	Summary	18
A.1	Status	18
A.2	Comments	18

1 Front

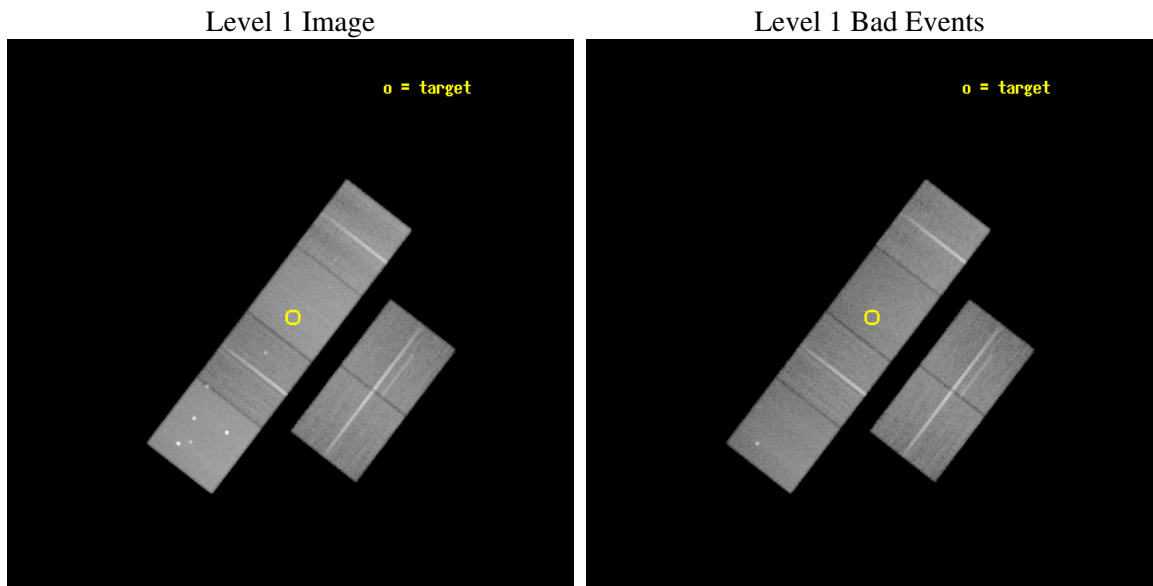
seq_num	200153
obs_id	2545
title	UNDERSTANDING THE ENGINE OF GROWTH IN PLANETARY NEBULAE
observer	Prof. Joel Kastner
object	M 1-16
dtcycle	0
cycle	P
ra_targ	114.3275
dec_targ	-9.646667
ra_nom	114.33202000309
dec_nom	-9.6552896434556
roll_nom	307.49277477816
revision	2
ontime	50156.800046712
livetime	49521.684443722
ontime2	50156.800046712
ontime3	50156.800046712
ontime5	50156.800046712
ontime6	50156.800046712
ontime7	50156.800046712
ontime8	50156.800046712
l2events	497750



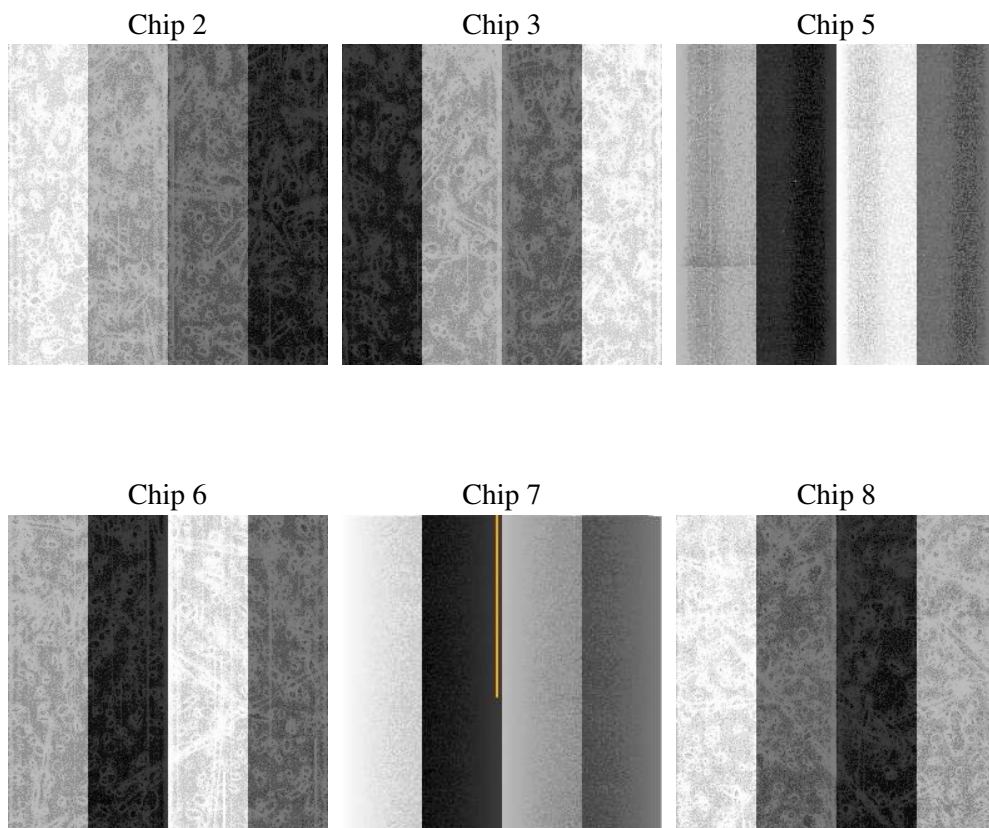
2 OBI

2.1 OBI

2.1.1 Images



2.1.2 Bias



2.1.3 Parameters

obi_num	0
ascdsver	7.6.8.1
caldsver	3.2.3
date	2006-08-31T23:11:12
revision	2

sched_exp_time	50000.000000
ontime	50387.936583459
ontime2	50387.936563537
ontime3	50387.936563537
ontime5	50387.936583459
ontime6	50387.936583459
ontime7	50387.936583459
ontime8	50387.936583459
l1events	2379465

2.1.4 Events

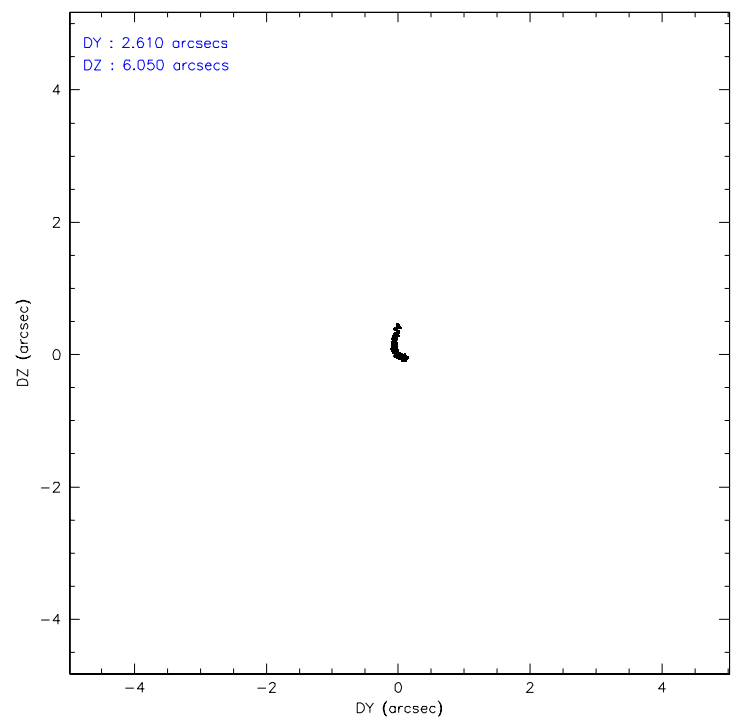
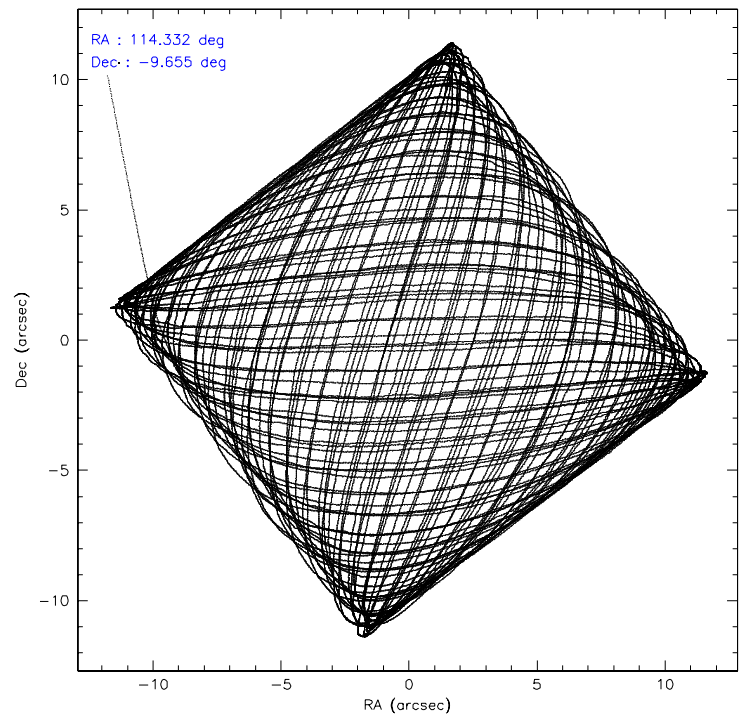
	ccd 2	ccd 3	ccd 5	ccd 6	ccd 7	ccd 8
level 1 events	349640	329209	496657	340881	439886	423192
rejected events	312675	292000	271344	301184	271483	338208
rejected %	89%	88%	54%	88%	61%	79%

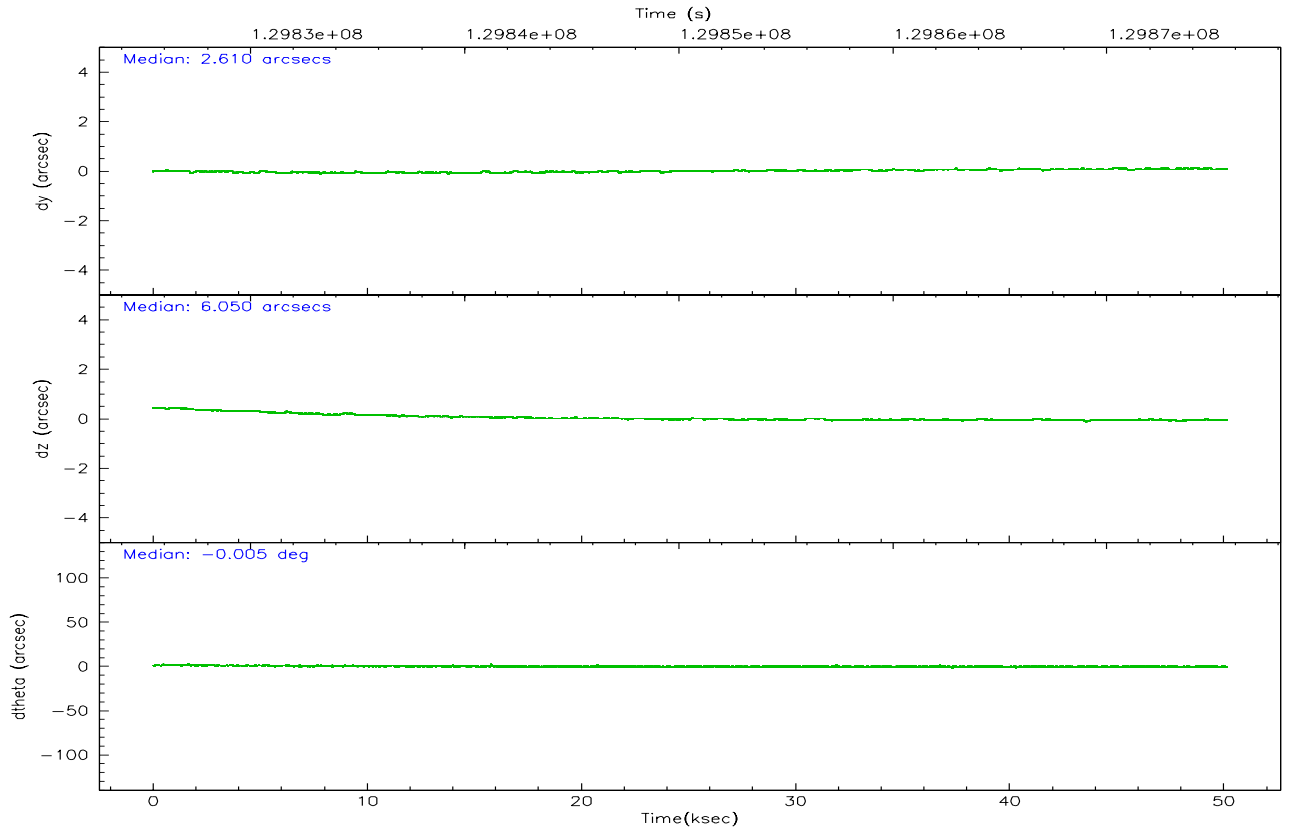
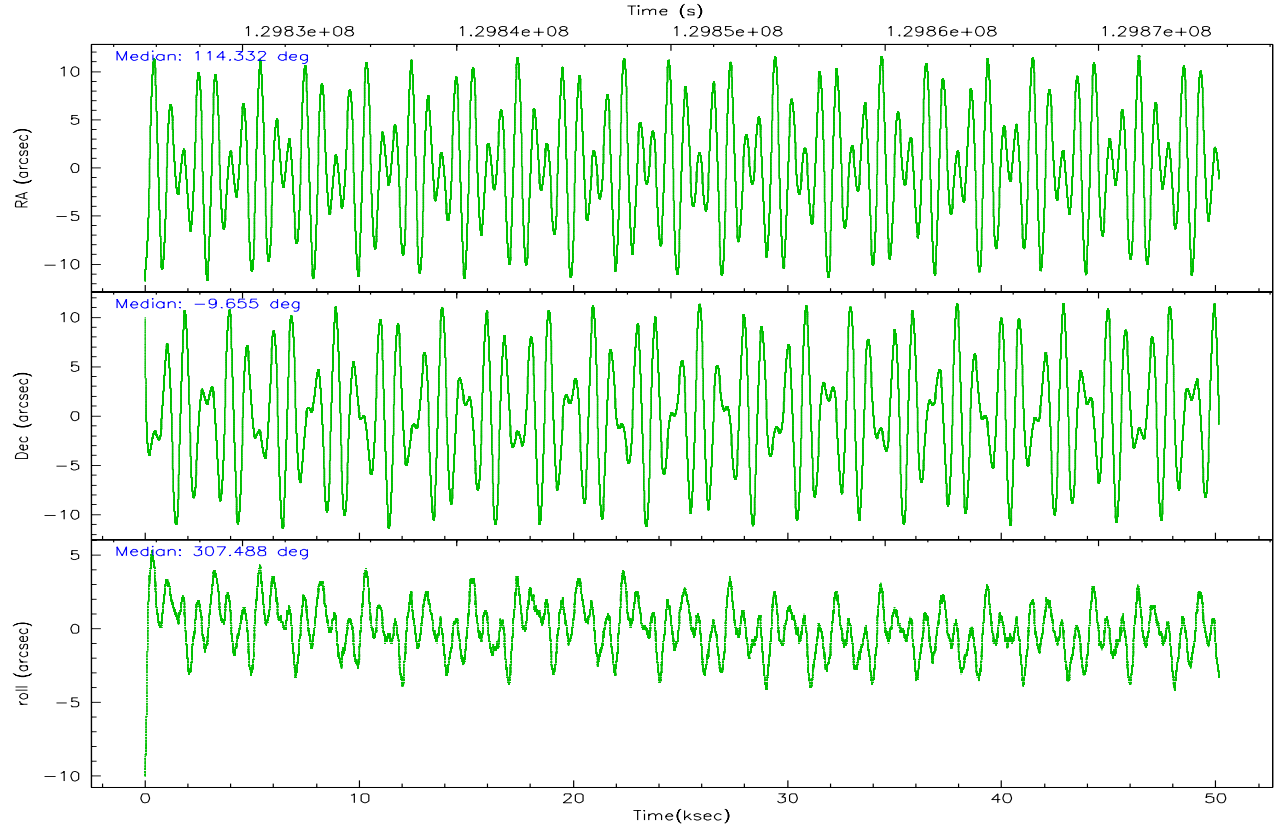
	ccd 2	ccd 3	ccd 5	ccd 6	ccd 7	ccd 8
grade 0 events	15029	15853	26840	16485	9961	26952
	4%	4%	5%	4%	2%	6%
grade 1 events	154	157	391	171	254	235
	0%	0%	0%	0%	0%	0%
grade 2 events	8338	7550	68587	7965	41789	18735
	2%	2%	13%	2%	9%	4%
grade 3 events	3473	3564	4898	3933	8861	9293
	0%	1%	0%	1%	2%	2%
grade 4 events	3562	3678	4590	3781	8510	8405
	1%	1%	0%	1%	1%	1%
grade 5 events	12121	13028	23640	14756	29283	18333
	3%	3%	4%	4%	6%	4%
grade 6 events	6778	6753	121473	7684	100097	22049
	1%	2%	24%	2%	22%	5%
grade 7 events	300185	278626	246238	286106	241131	319190
	85%	84%	49%	83%	54%	75%

2.2 Compared Parameters

Parameter	Planned	Actual	Parameter	Planned	Actual
Instrument	ACIS	ACIS	Obspar format version number	6	6
Detector	ACIS-235678	ACIS-235678	Obspar file type	PREDICTED	ACTUAL
Grating	NONE	NONE	Obspar update status	NONE	UPDATED
Data mode	FAINT	FAINT	On-chip summing requested	N	N
Observation mode	POINTING	POINTING	Subarray requested	NONE	NONE
Pointing RA	114.306358	114.332020003089	Alternating exposures requested	N	N
Pointing Dec	-9.645171	-9.655289643455637	Primary exposure time	0.000000	3.2
Pointing Roll	307.331845	307.4927747781587			
SIM focus pos (mm)	-0.684267	-0.6828225247311905			
SIM defocus (mm)	0	0.001444936568705701			
SIM translation stage pos (mm)	-190.132523	-190.1425803651734			
SIM translation stage offset (mm)	0	0.01005778216563158			
Observation start time	129825618.184000	129824444.91905			
Observation start date	2002-02-11T14:39:14	2002-02-11T14:20:44			
Observation end time	129875618.184000	129876736.32116			
Observation end date	2002-02-12T04:32:34	2002-02-12T04:52:16			
Read mode	TIMED	TIMED			

2.3 Aspect



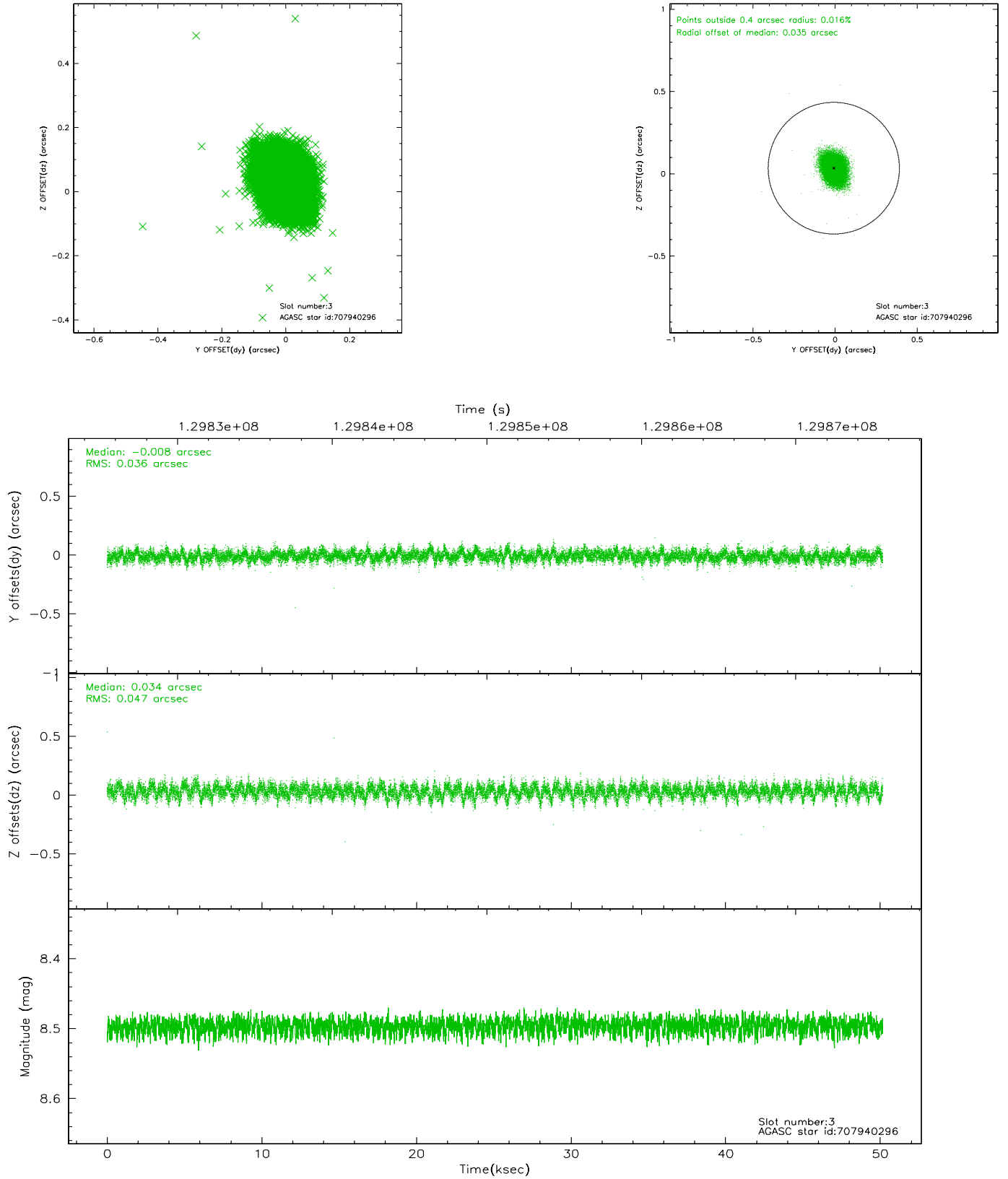


Slot Statistics

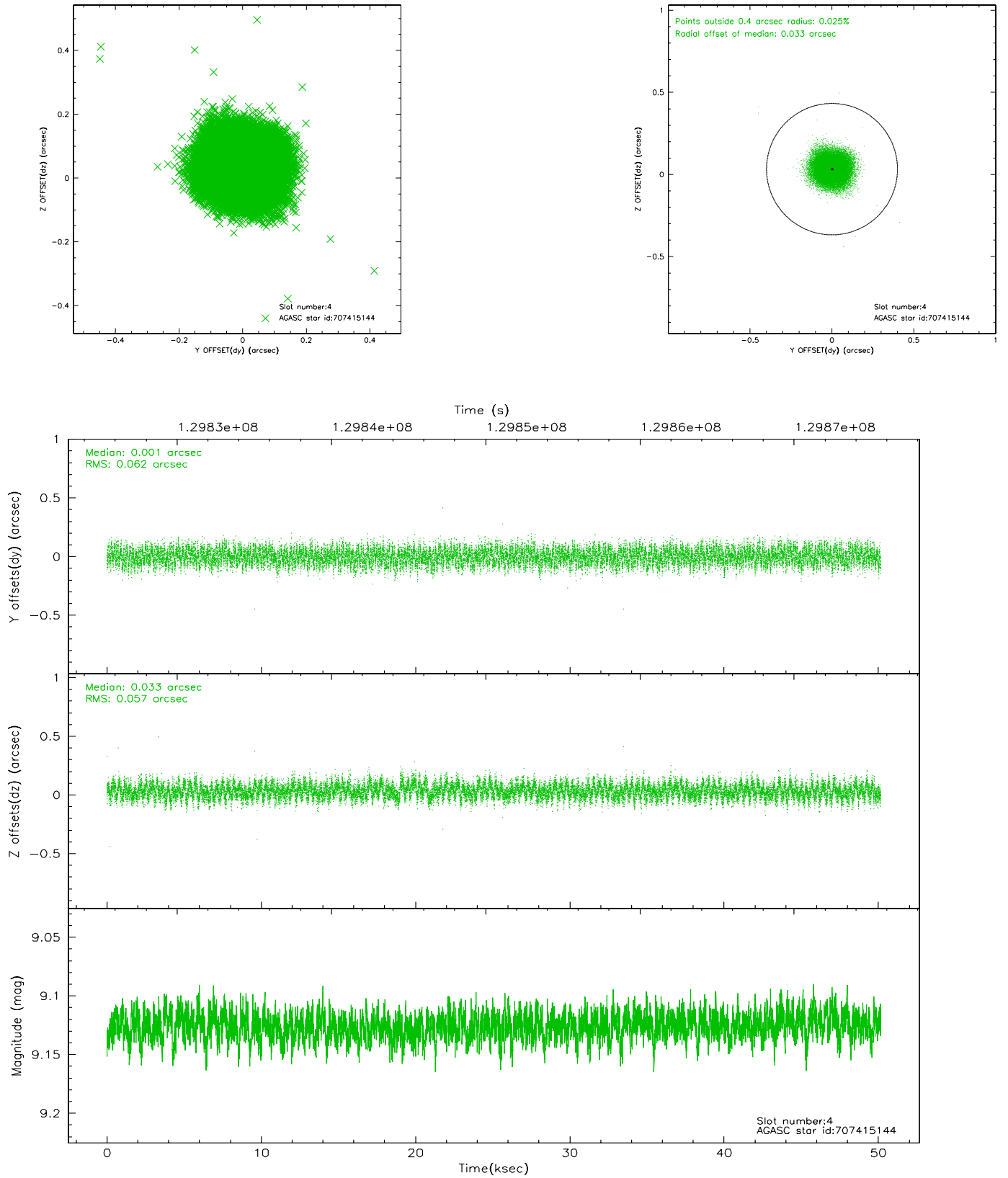
slot	status	id	mag	n_pts	med_dy	med_dz	dr1	dr2	ra	dec	mean_y	mean_z
0	FID	ACIS-S-2	7.12	12231	-0.024	0.034	0.007	0.011	0.000000	0.000000	-755.23	-1727.18
1	FID	ACIS-S-4	7.20	12231	-0.074	0.002	0.006	0.011	0.000000	0.000000	2157.96	181.36
2	FID	ACIS-S-5	7.24	12233	0.067	-0.027	0.006	0.011	0.000000	0.000000	-1808.05	174.89
3	GUIDE	707940296	8.50	24466	-0.008	0.034	0.062	0.104	114.157383	-10.181236	1214.77	-1589.65
4	GUIDE	707415144	9.13	24451	0.001	0.033	0.091	0.141	114.190071	-9.025360	-2024.77	1024.52
5	GUIDE	707935064	9.51	24450	-0.129	-0.175	0.118	0.198	113.544871	-9.489625	-2082.52	-1812.17
6	GUIDE	707418080	9.41	24456	0.015	0.000	0.086	0.137	114.370059	-9.256004	-976.70	1029.75
7	GUIDE	709639336	8.89	24463	0.127	0.111	0.075	0.122	115.169607	-9.676260	1950.00	2366.40

2.4 Star Slots

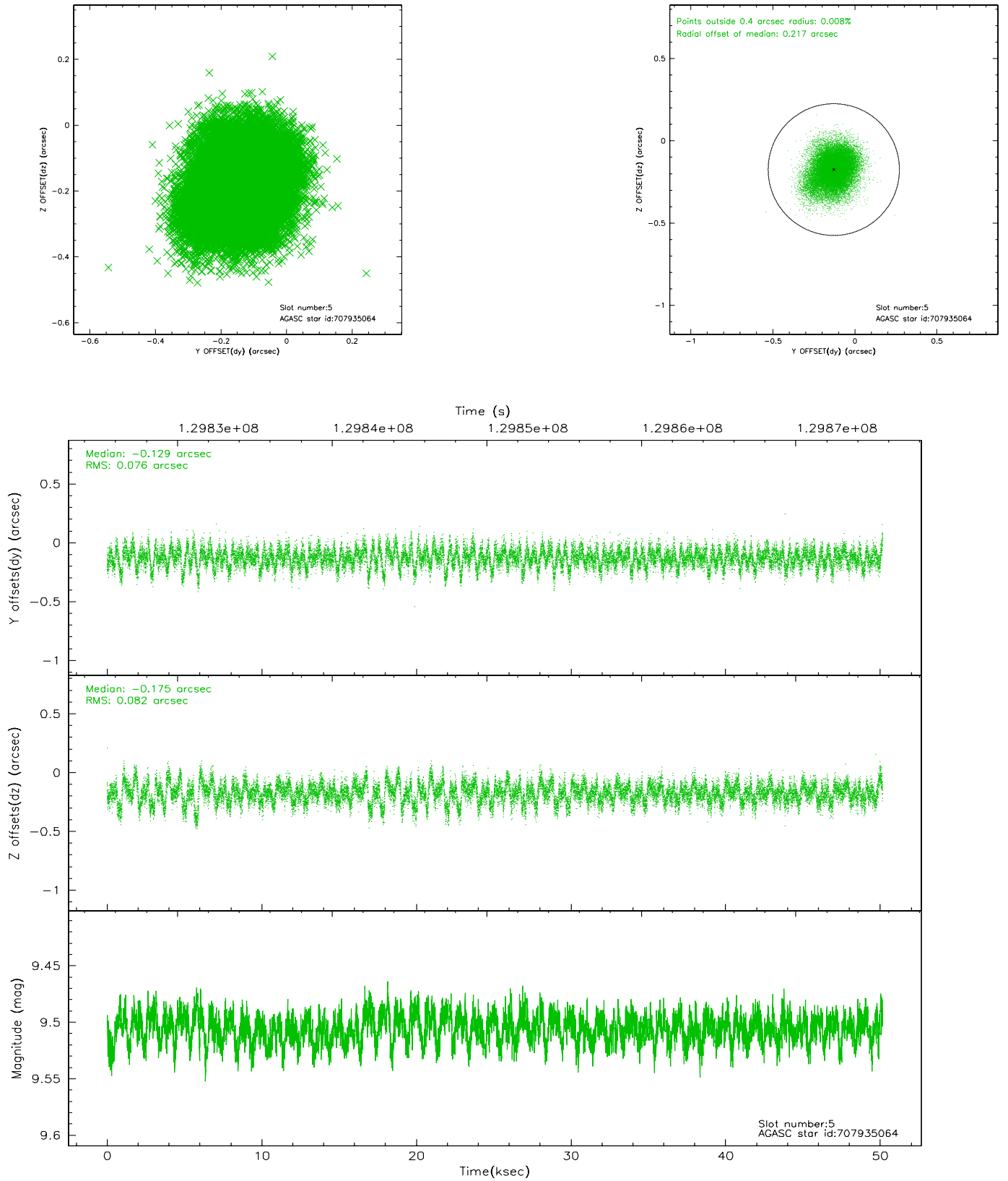
2.4.1 Slot 3



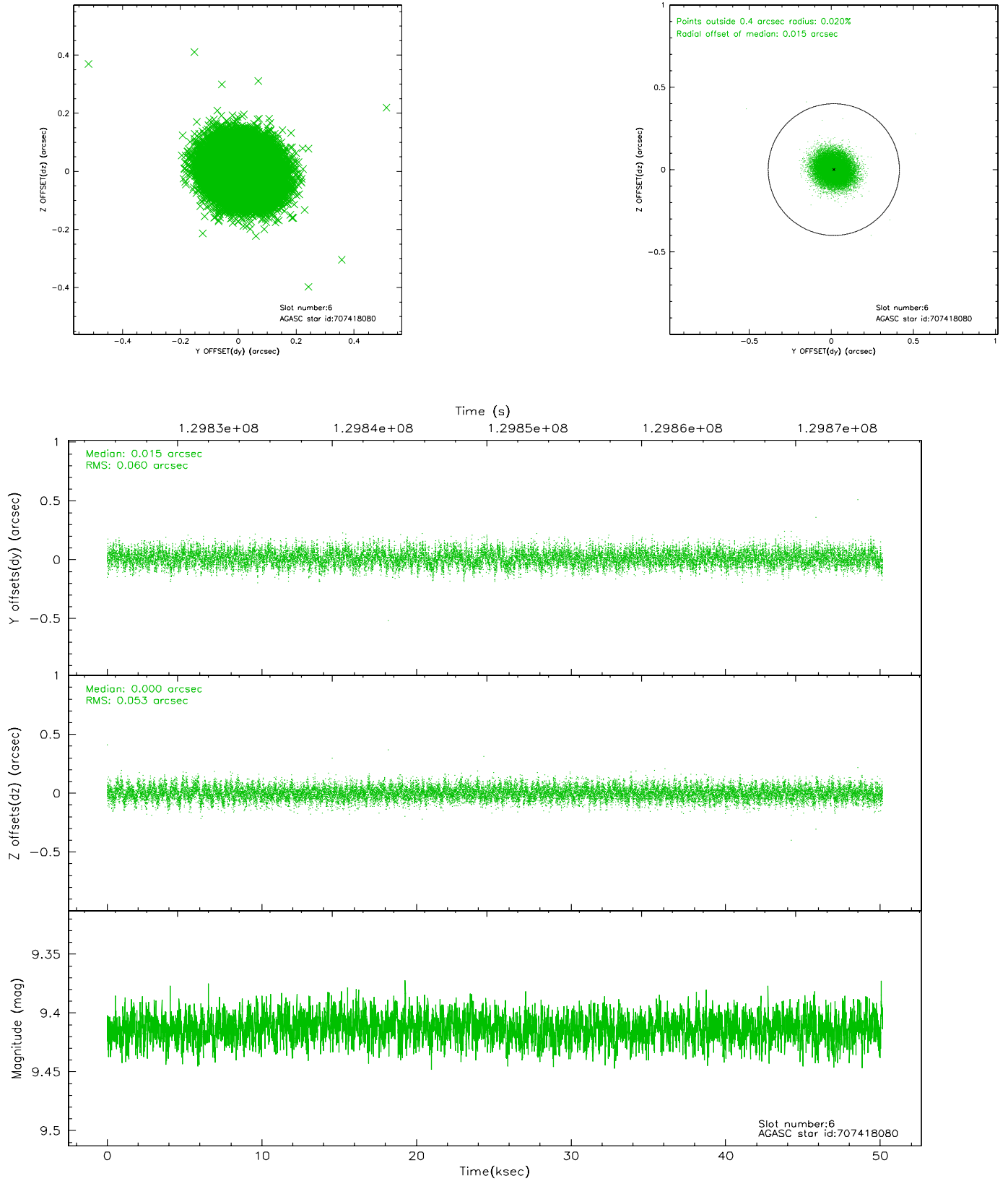
2.4.2 Slot 4



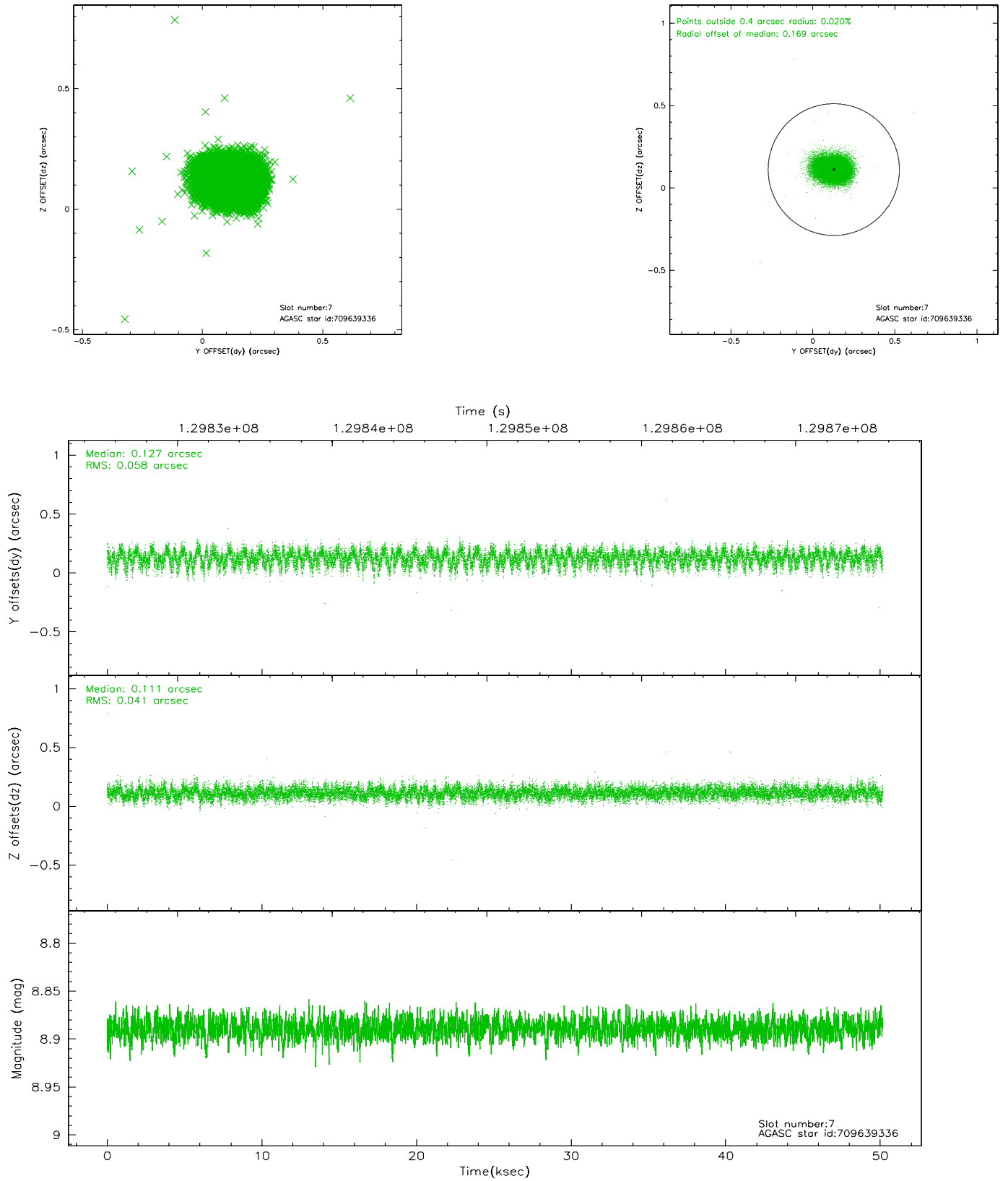
2.4.3 Slot 5



2.4.4 Slot 6

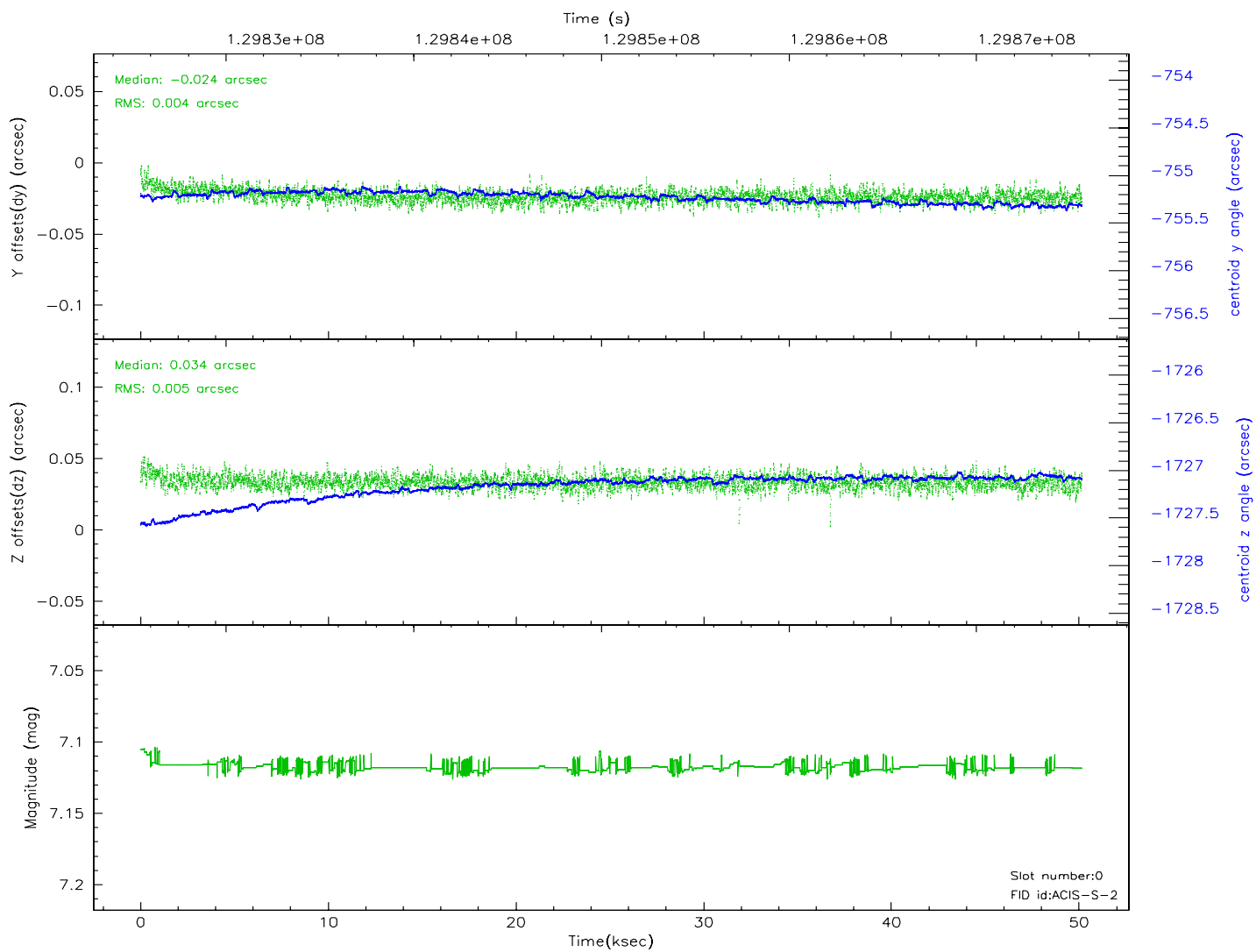
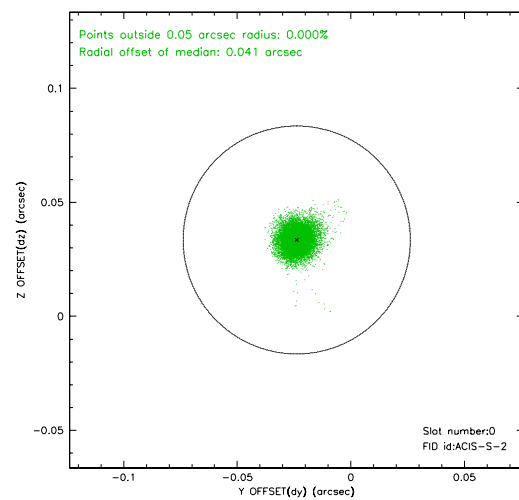
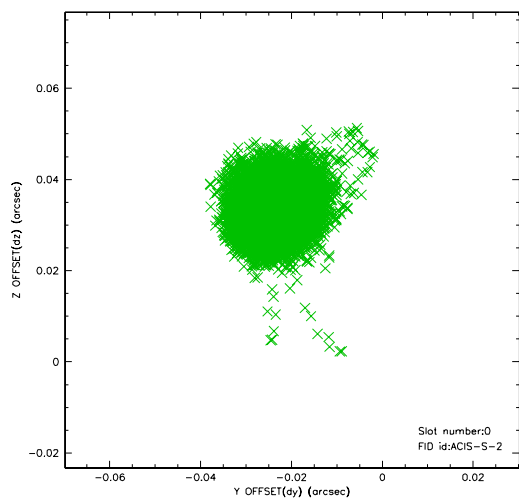


2.4.5 Slot 7

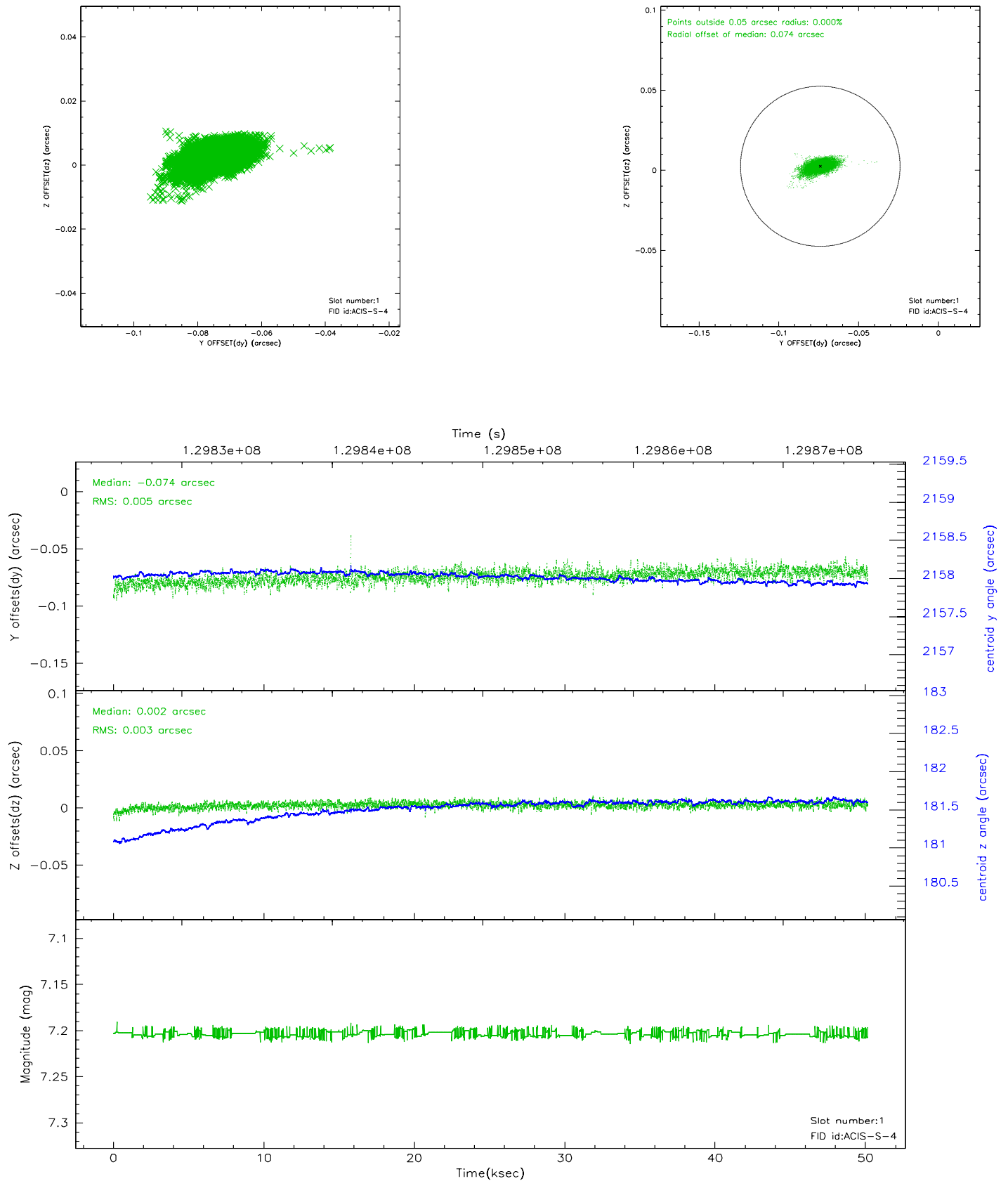


2.5 FID Slots

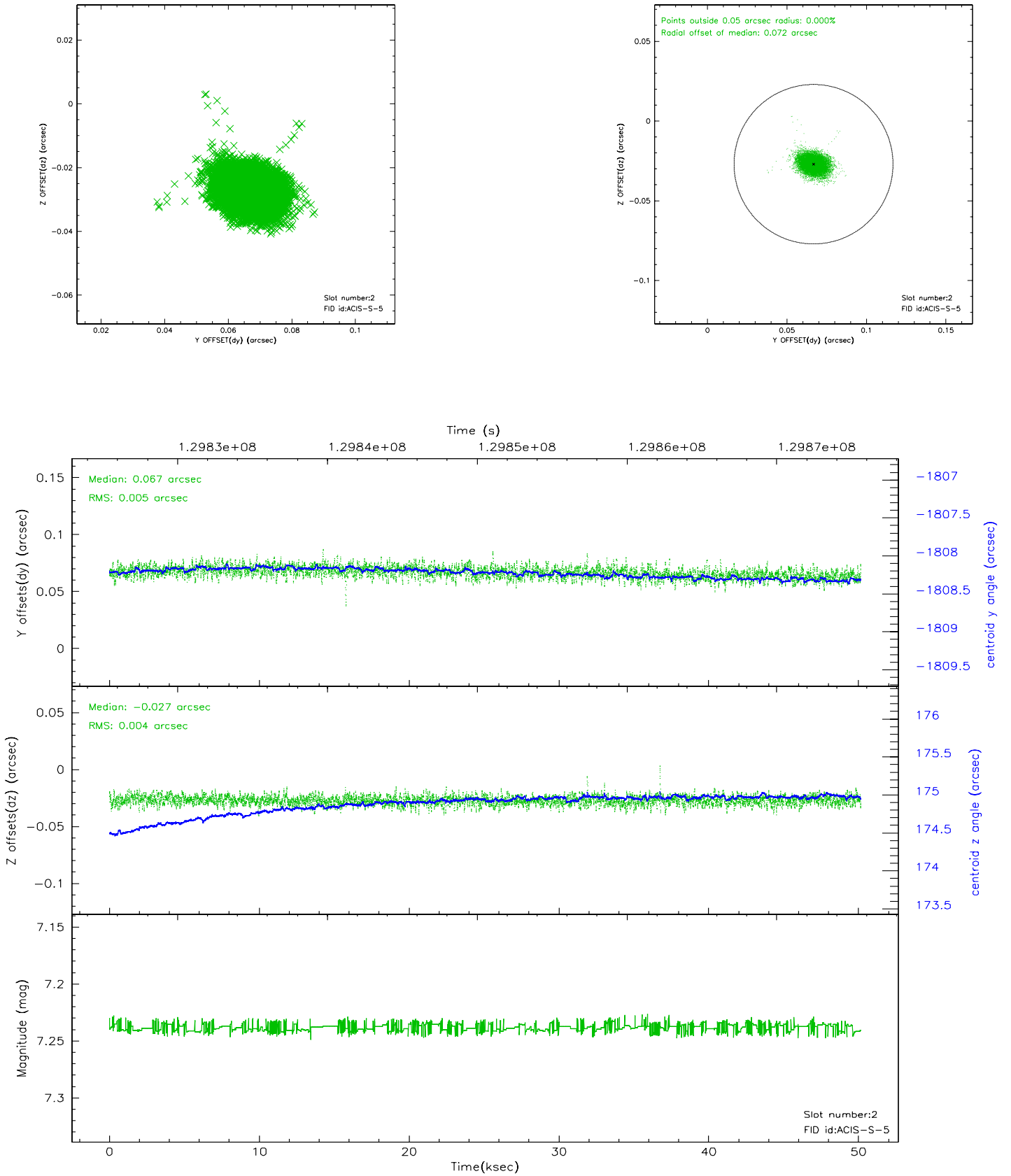
2.5.1 Slot 0



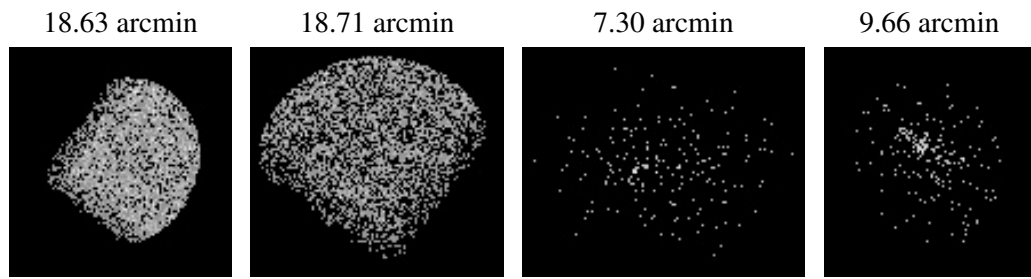
2.5.2 Slot 1



2.5.3 Slot 2



3 Point Sources



A Summary

A.1 Status

V&V Scientist	Jen Lauer
V&V Date (YYYY-MM-DD)	2006.09.01
V&V Edition	1
V&V Disposition and Status	OK
V&V Charge Time	50.156

A.2 Comments