

V&V Reference Report

L2 ASCDS Version : 7.6.9

Observation 2533 - L2 Version 001
Chandra X-Ray Center

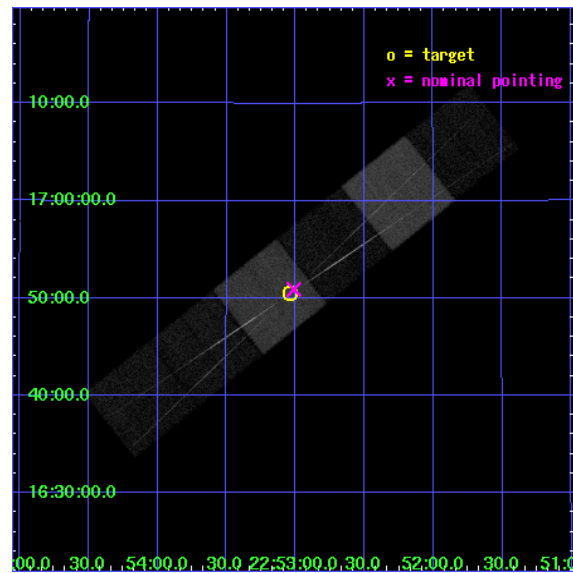
L2 Processing Date : Oct 6 2006

Contents

1	Front	2
2	OBI	3
2.1	OBI	3
2.1.1	Images	3
2.1.2	Bias	3
2.1.3	Parameters	4
2.1.4	Events	4
2.2	Compared Parameters	5
2.3	Aspect	6
2.4	Star Slots	9
2.4.1	Slot 3	9
2.4.2	Slot 4	10
2.4.3	Slot 5	11
2.4.4	Slot 6	12
2.4.5	Slot 7	13
2.5	FID Slots	14
2.5.1	Slot 0	14
2.5.2	Slot 1	15
2.5.3	Slot 2	16
3	Gratings	17
3.1	HEG Arm	17
3.2	MEG Arm	19
A	Summary	21
A.1	Status	21
A.2	Comments	21

1 Front

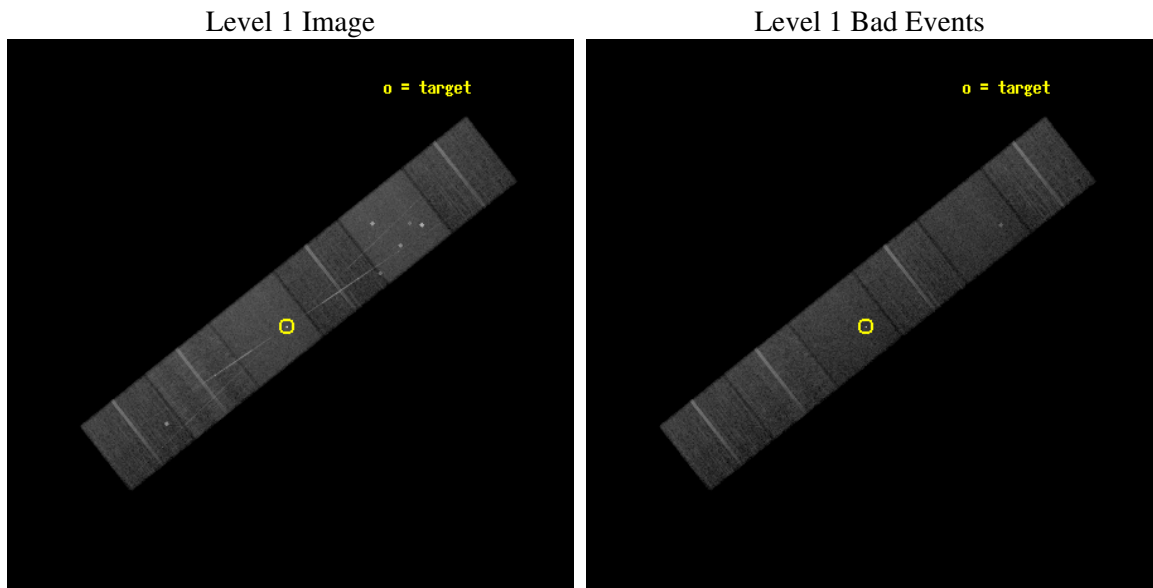
seq_num	200141
obs_id	2533
title	HETGS SPECTROSCOPY OF THE LONG-PERIOD ACTIVE BINARY, IM PEGASI.
observer	Dr. David Huenemoerder
object	IM PEG
dtcycle	0
cycle	P
ra_targ	343.259583
dec_targ	16.841194
ra_nom	343.25286067284
dec_nom	16.848469262847
roll_nom	141.58883751775
revision	2
ontime	23996.799910605
livetime	23692.937980999
ontime4	23993.558930337
ontime5	23996.799910605
ontime6	23996.799910605
ontime7	23996.799910605
ontime8	23996.799910605
ontime9	23996.799910605
l2events	237255



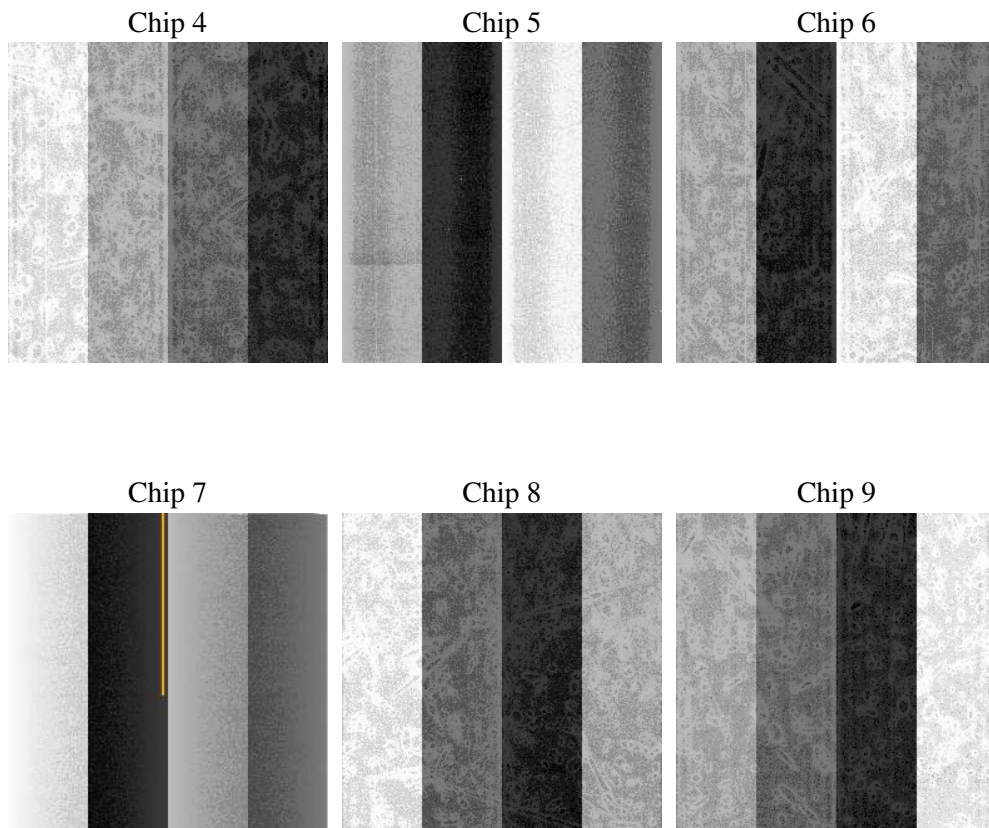
2 OBI

2.1 OBI

2.1.1 Images



2.1.2 Bias



2.1.3 Parameters

obi_num	0
ascdsver	7.6.9
caldsver	3.2.3
date	2006-09-30T10:46:37
revision	2

sched_exp_time	24300.000000
ontime	24002.895748287
ontime4	23999.65476802
ontime5	24002.895748287
ontime6	24002.895748287
ontime7	24002.895748287
ontime8	24002.895748287
ontime9	24002.895748287
l1events	1046253

2.1.4 Events

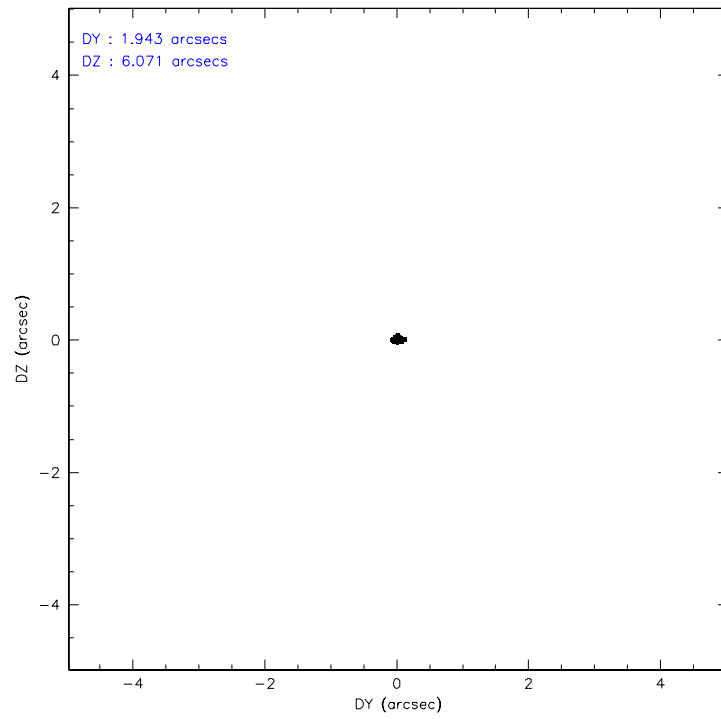
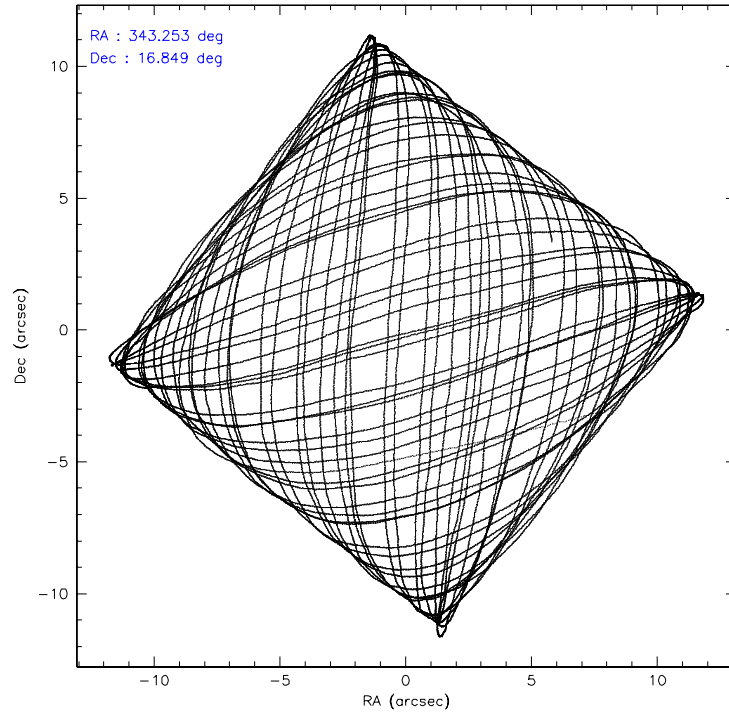
	ccd 4	ccd 5	ccd 6	ccd 7	ccd 8	ccd 9
level 1 events	153780	215886	148372	199744	184647	143824
rejected events	135878	115942	124804	119829	143047	123763
rejected %	88%	53%	84%	59%	77%	86%

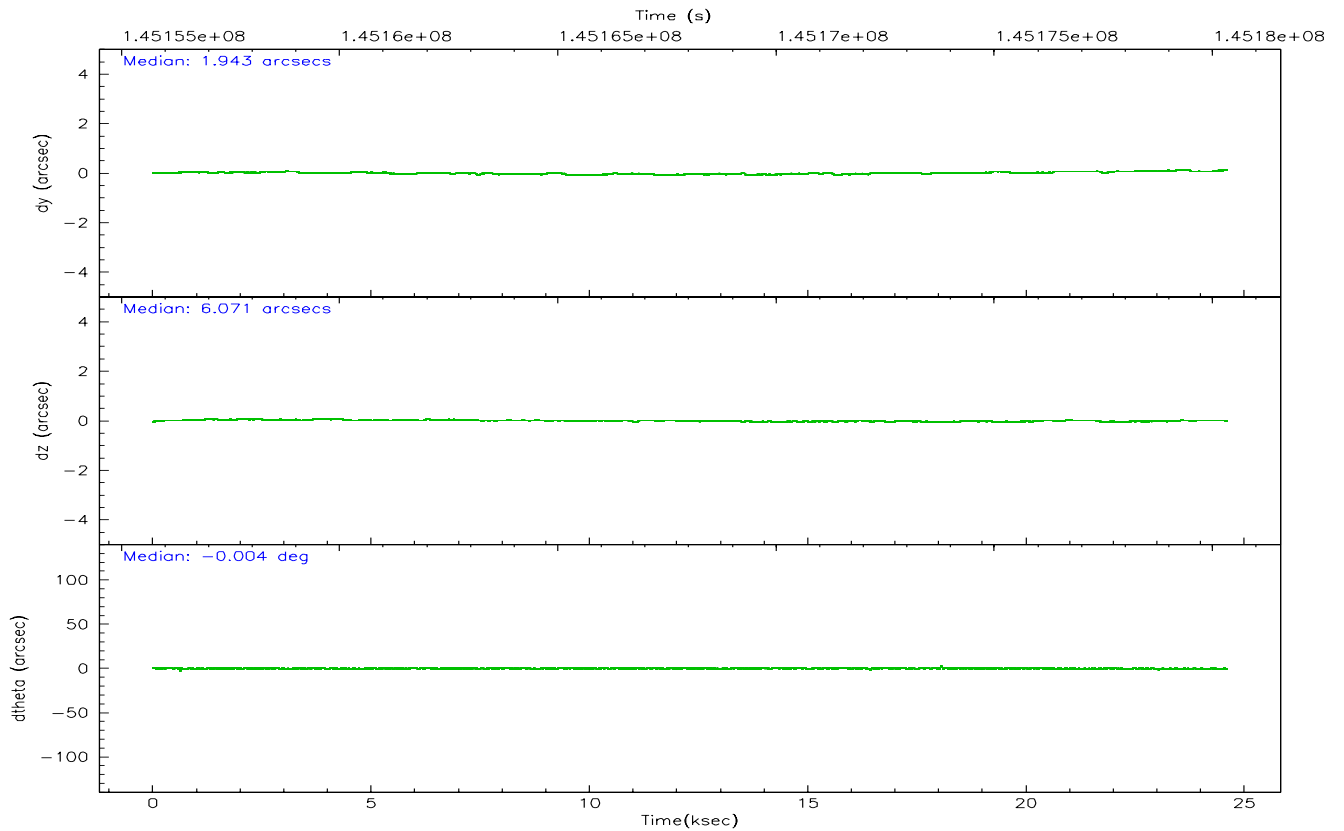
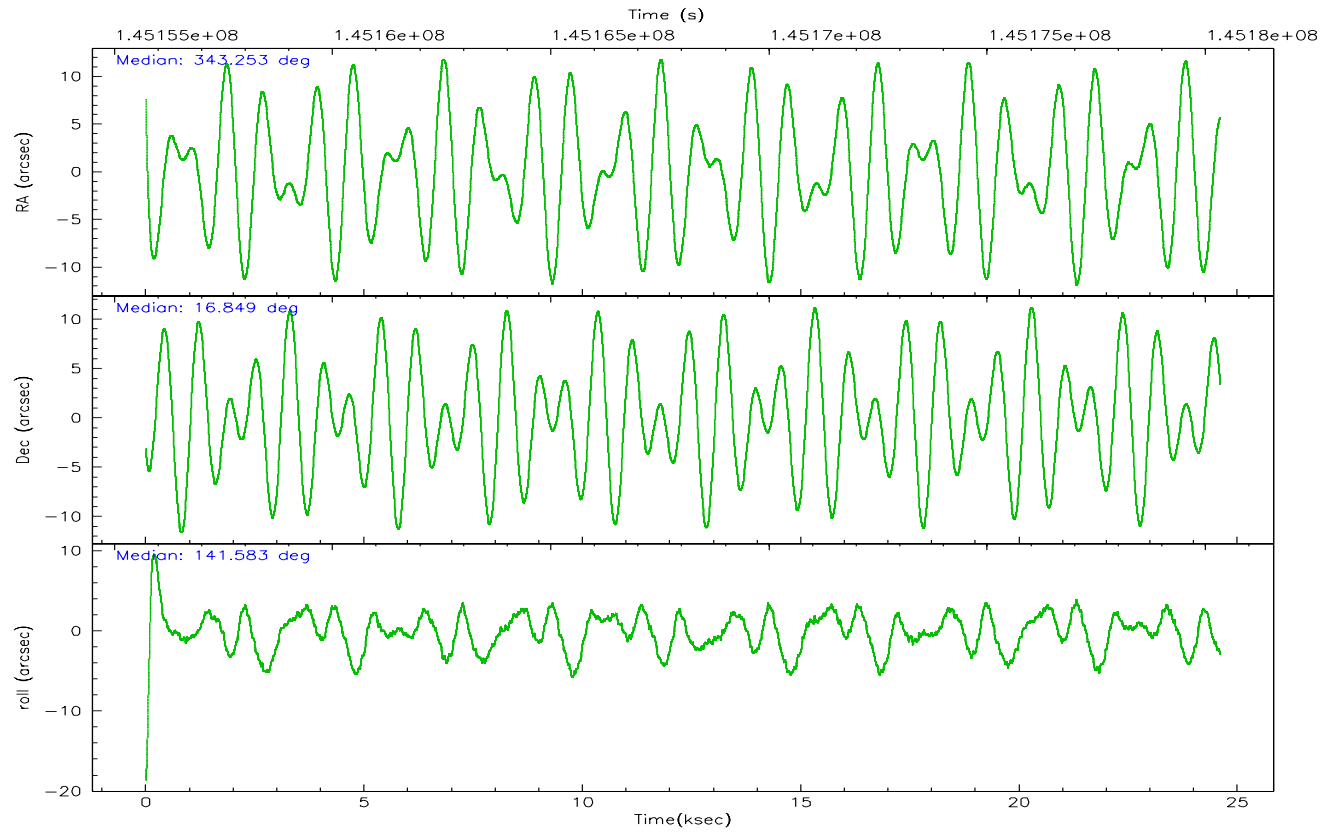
	ccd 4	ccd 5	ccd 6	ccd 7	ccd 8	ccd 9
grade 0 events	8139	15389	12410	5685	16078	9845
	5%	7%	8%	2%	8%	6%
grade 1 events	141	701	82	243	129	86
	0%	0%	0%	0%	0%	0%
grade 2 events	3478	28618	3954	19667	8247	3403
	2%	13%	2%	9%	4%	2%
grade 3 events	1805	2298	1932	4582	4060	1829
	1%	1%	1%	2%	2%	1%
grade 4 events	1781	2218	1834	4497	3716	1705
	1%	1%	1%	2%	2%	1%
grade 5 events	5926	9944	6351	13776	8170	6796
	3%	4%	4%	6%	4%	4%
grade 6 events	2705	51458	3442	45501	9508	3287
	1%	23%	2%	22%	5%	2%
grade 7 events	129805	105260	118367	105793	134739	116873
	84%	48%	79%	52%	72%	81%

2.2 Compared Parameters

Parameter	Planned	Actual	Parameter	Planned	Actual
Instrument	ACIS	ACIS	Obspar format version number	6	6
Detector	ACIS-456789	ACIS-456789	Obspar file type	PREDICTED	ACTUAL
Grating	HETG	HETG	Obspar update status	NONE	UPDATED
Data mode	FAINT	FAINT	Number of optional ACIS chips dropped	0	0
Observation mode	POINTING	POINTING	On-chip summing requested	N	N
Pointing RA	343.281090	343.2528606728389	Subarray requested	NONE	NONE
Pointing Dec	16.844816	16.84846926284737	Alternating exposures requested	N	N
Pointing Roll	141.424034	141.5888375177548	Primary exposure time	0.000000	3.2
SIM focus pos (mm)	-0.684267	-0.6828225247311905			
SIM defocus (mm)	0	0.001444936568705701			
SIM translation stage pos (mm)	-187.132523	-187.1254020033014			
SIM translation stage offset (mm)	-3	-3.007120579706367			
Observation start time	145156038.184000	145155022.04399			
Observation start date	2002-08-08T01:06:14	2002-08-08T00:50:22			
Observation end time	145180338.184000	145181093.94507			
Observation end date	2002-08-08T07:51:14	2002-08-08T08:04:53			
Read mode	TIMED	TIMED			

2.3 Aspect



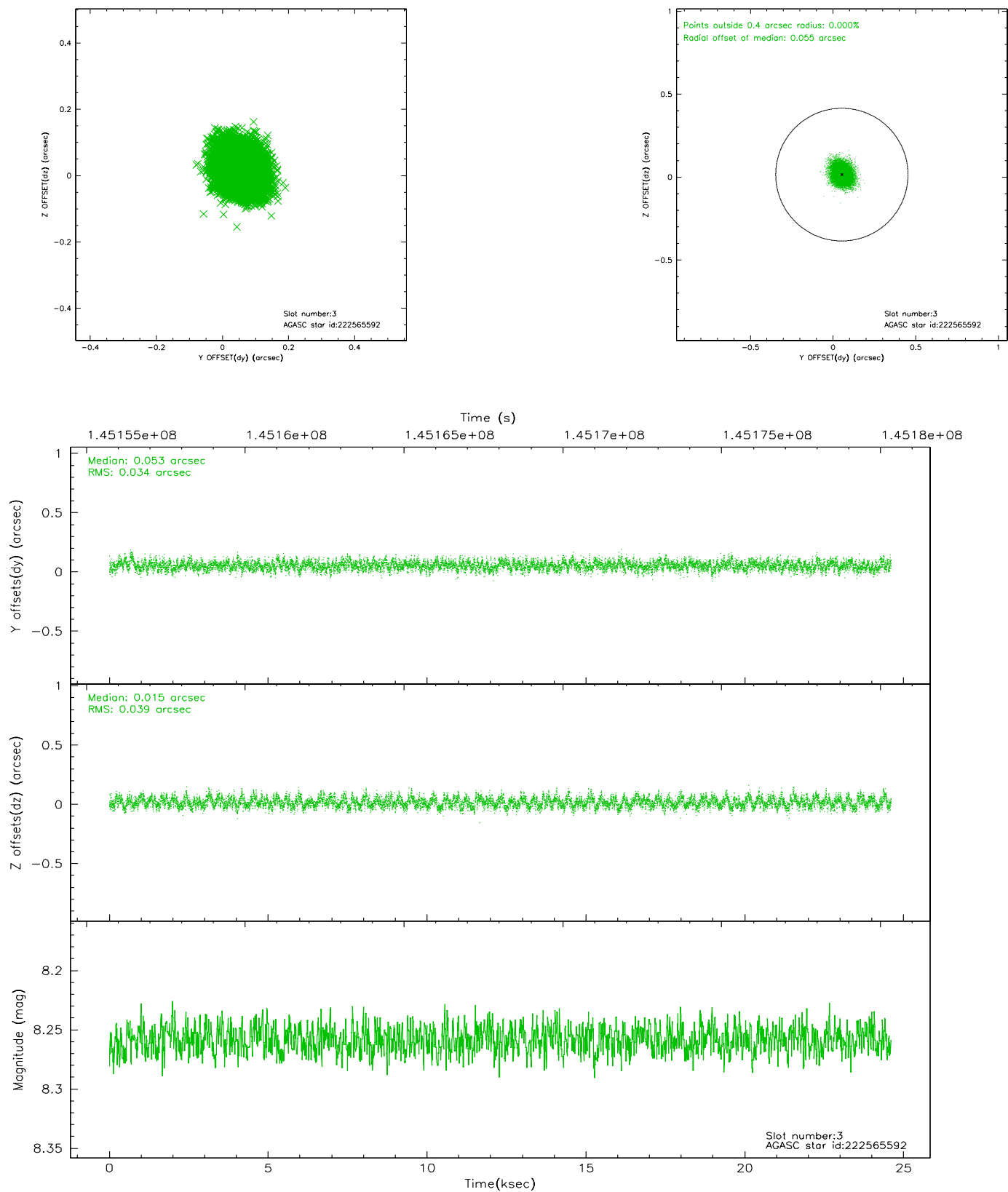


Slot Statistics

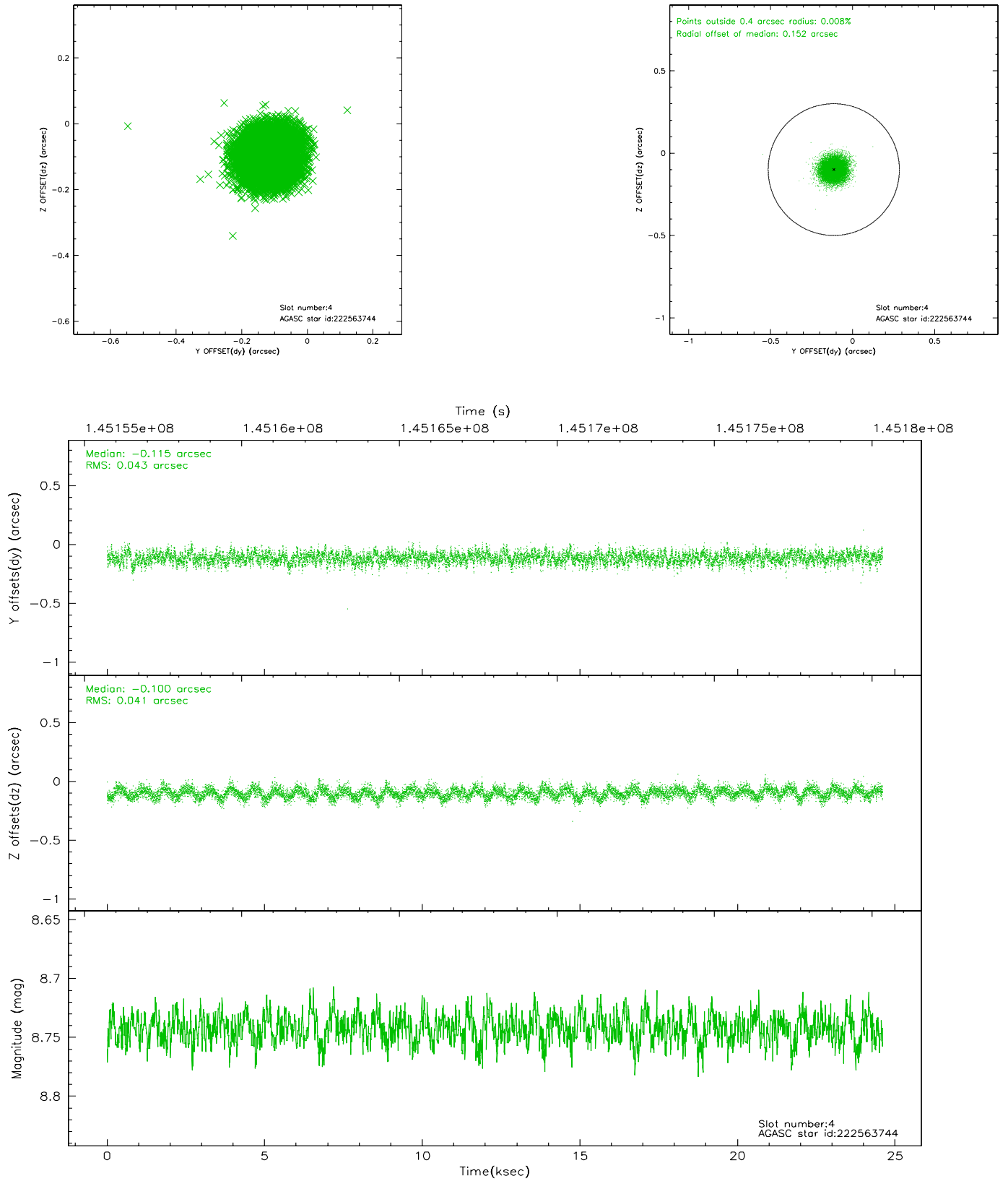
slot	status	id	mag	n_pts	med_dy	med_dz	dr1	dr2	ra	dec	mean_y	mean_z
0	FID	ACIS-S-2	7.10	5996	-0.032	-0.003	0.005	0.009	0.000000	0.000000	-754.37	-1789.31
1	FID	ACIS-S-4	7.20	6001	-0.011	0.037	0.006	0.010	0.000000	0.000000	2158.86	119.09
2	FID	ACIS-S-6	7.39	6001	0.015	-0.026	0.007	0.011	0.000000	0.000000	407.80	756.55
3	GUIDE	222565592	8.26	12000	0.053	0.015	0.055	0.089	343.291662	16.508291	-783.40	925.20
4	GUIDE	222563744	8.74	11998	-0.115	-0.100	0.064	0.101	342.392259	16.776439	2246.15	2098.51
5	GUIDE	222562432	8.94	11934	0.203	0.007	0.077	0.122	343.698150	16.309399	-2326.80	607.85
6	GUIDE	222563736	8.83	12000	0.010	-0.150	0.067	0.106	343.076284	16.308502	-650.47	1950.65
7	GUIDE	223089808	9.09	12000	-0.148	0.225	0.083	0.135	343.220223	17.508272	1652.93	-1736.04

2.4 Star Slots

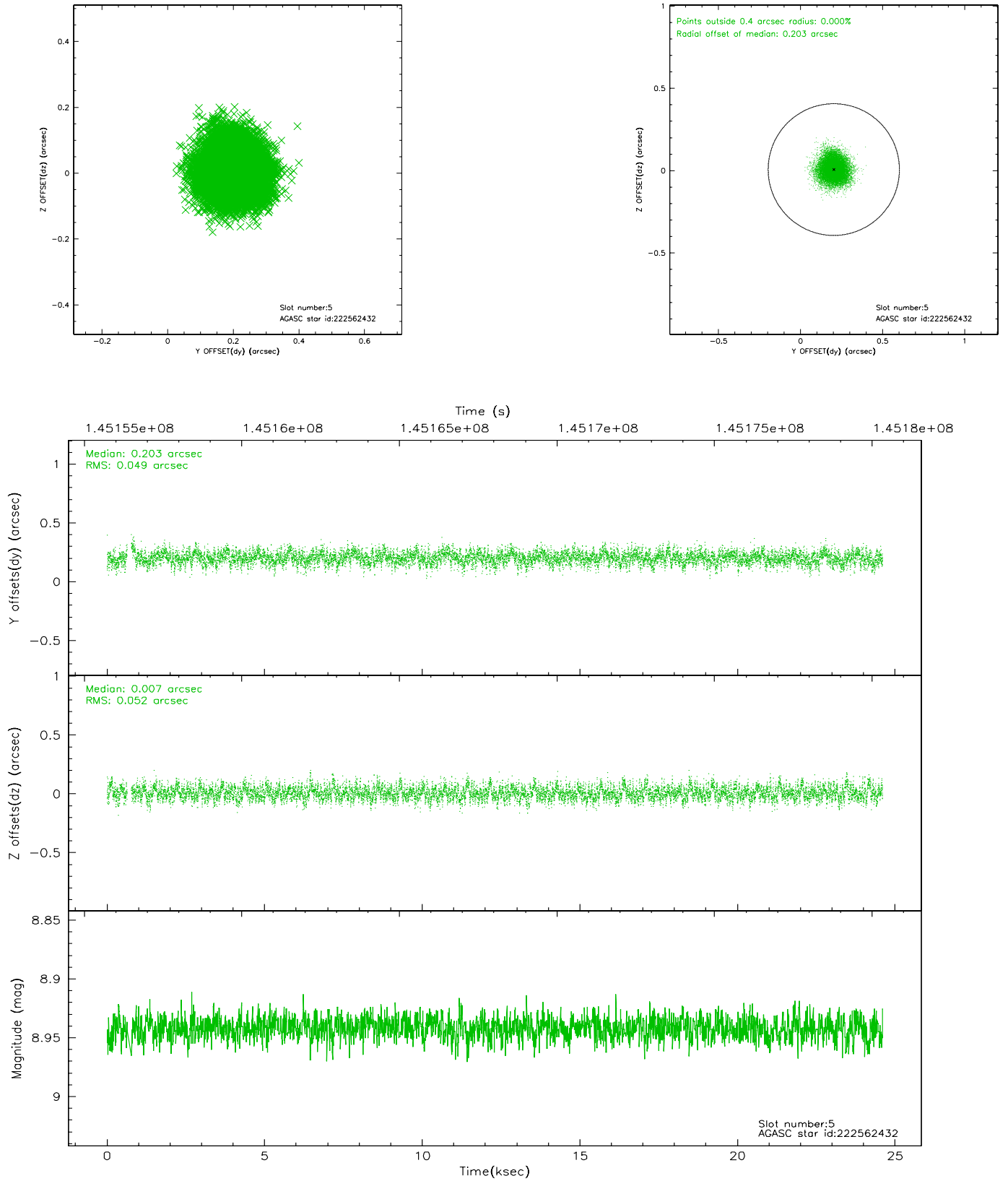
2.4.1 Slot 3



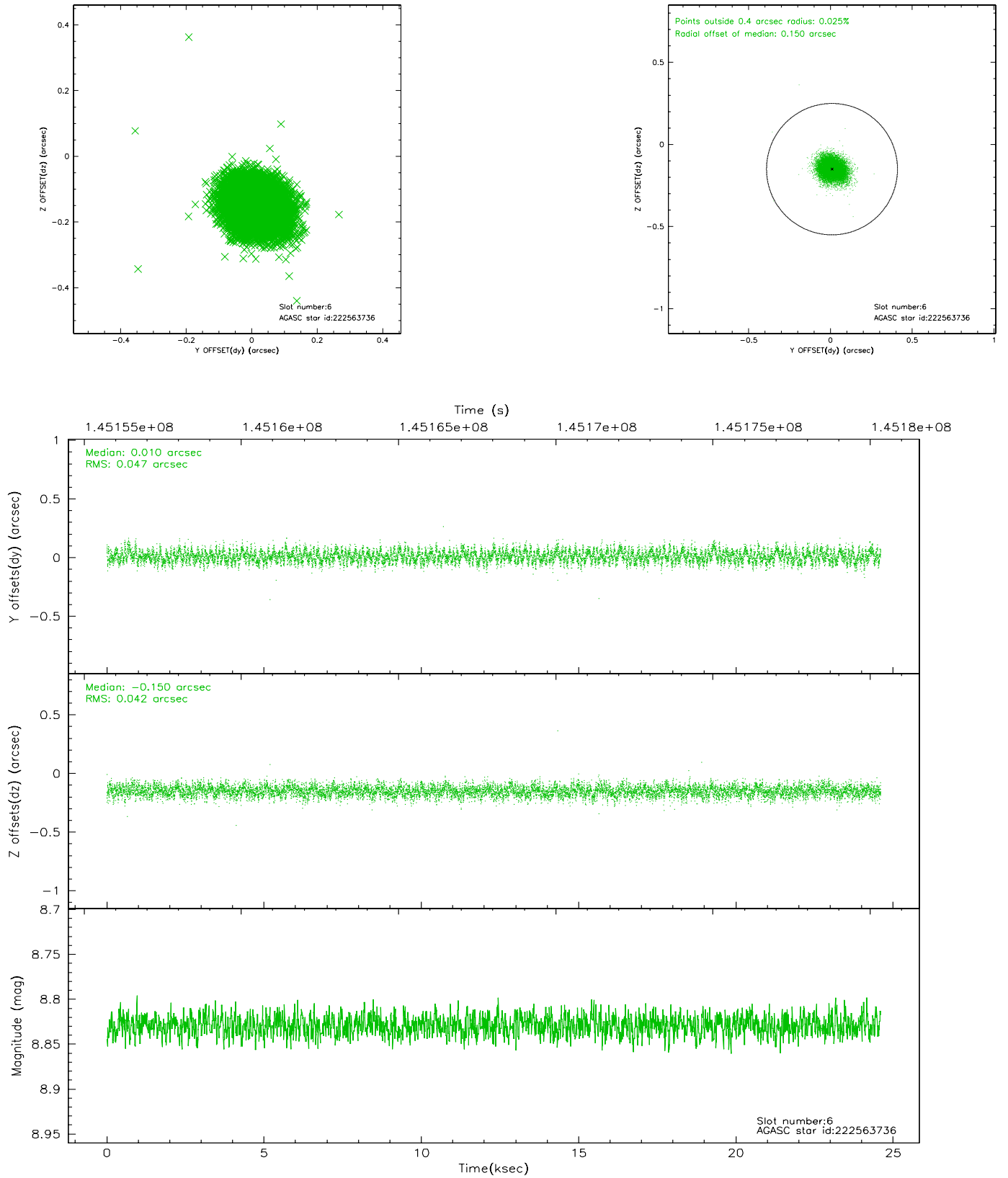
2.4.2 Slot 4



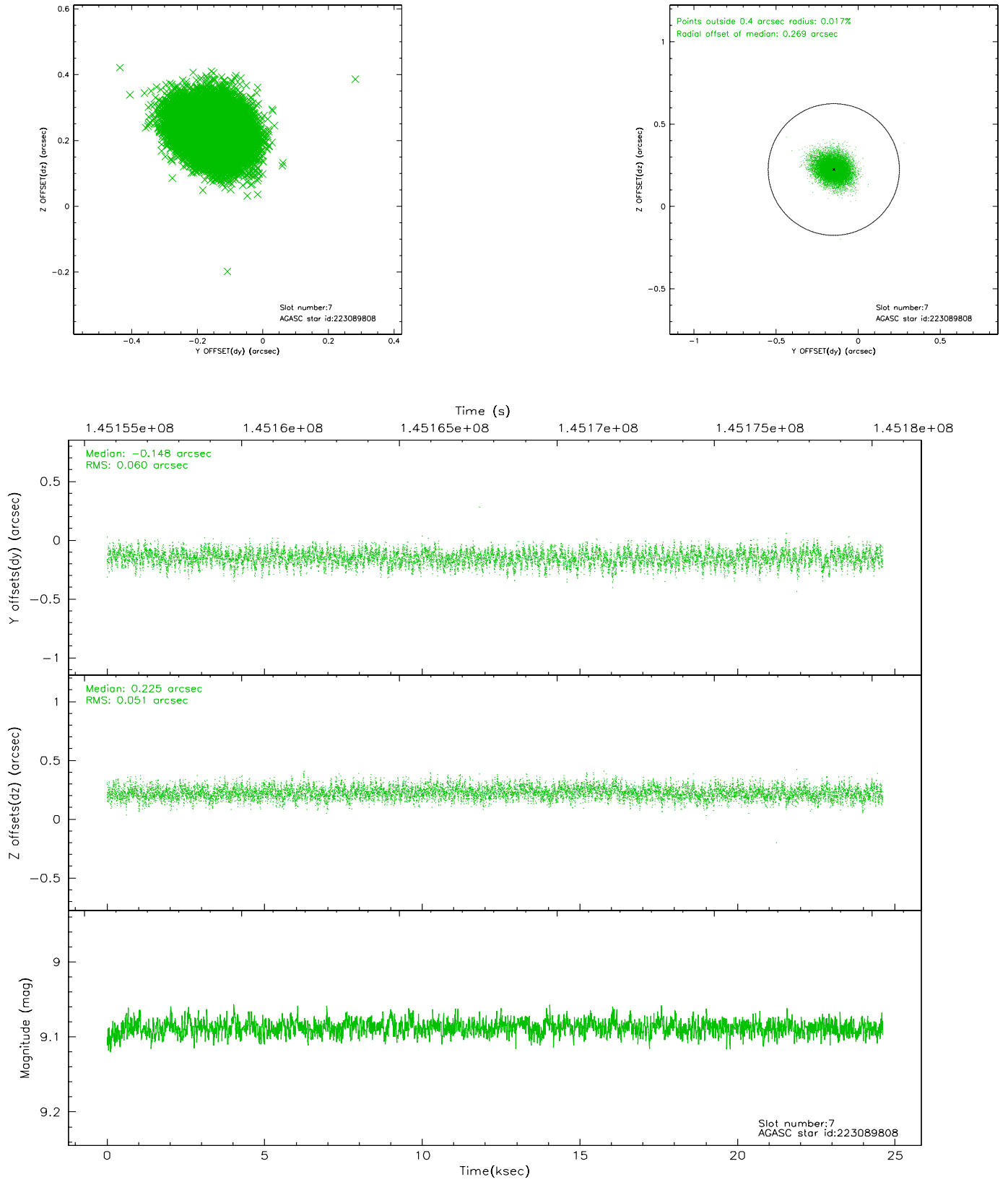
2.4.3 Slot 5



2.4.4 Slot 6

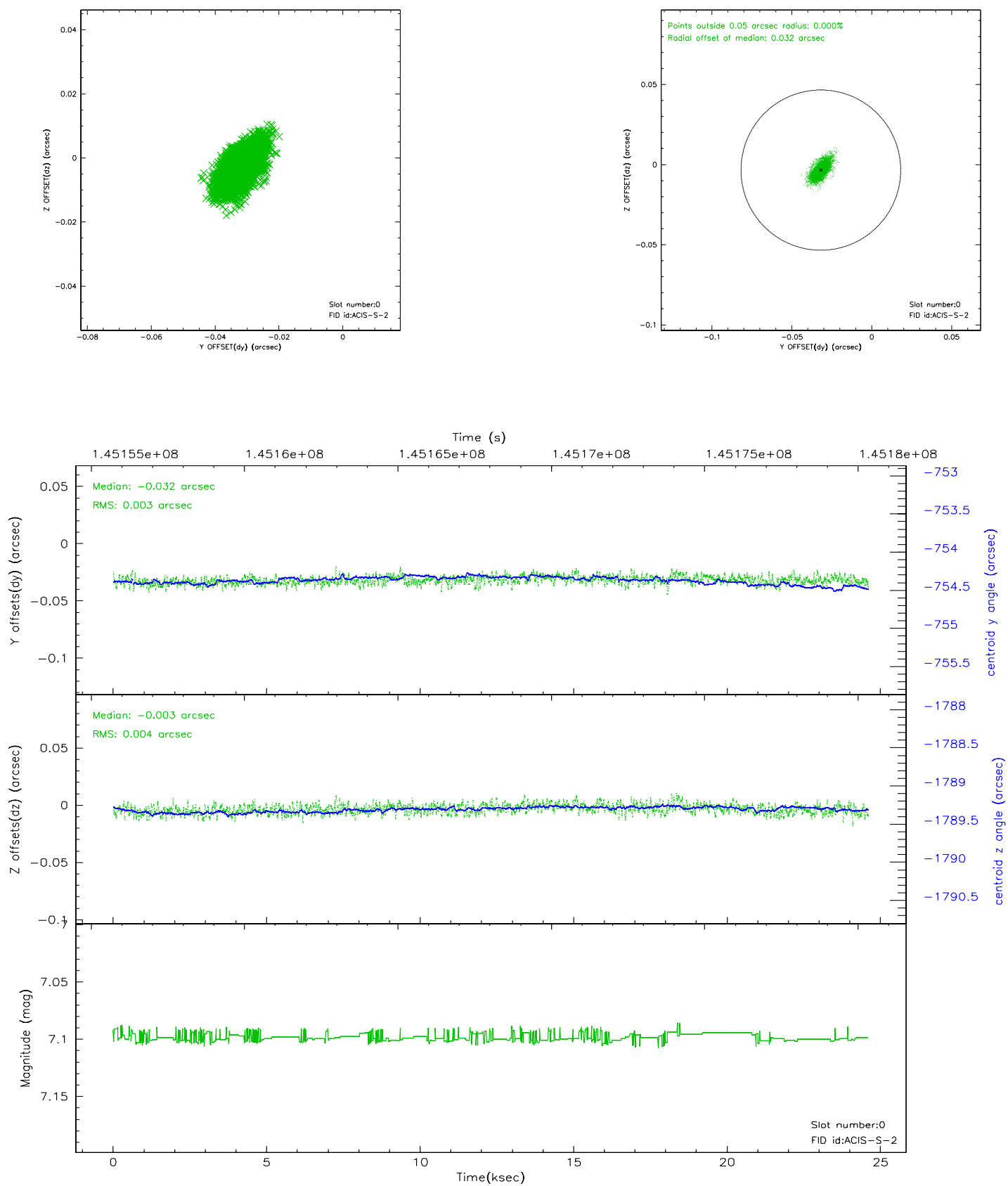


2.4.5 Slot 7

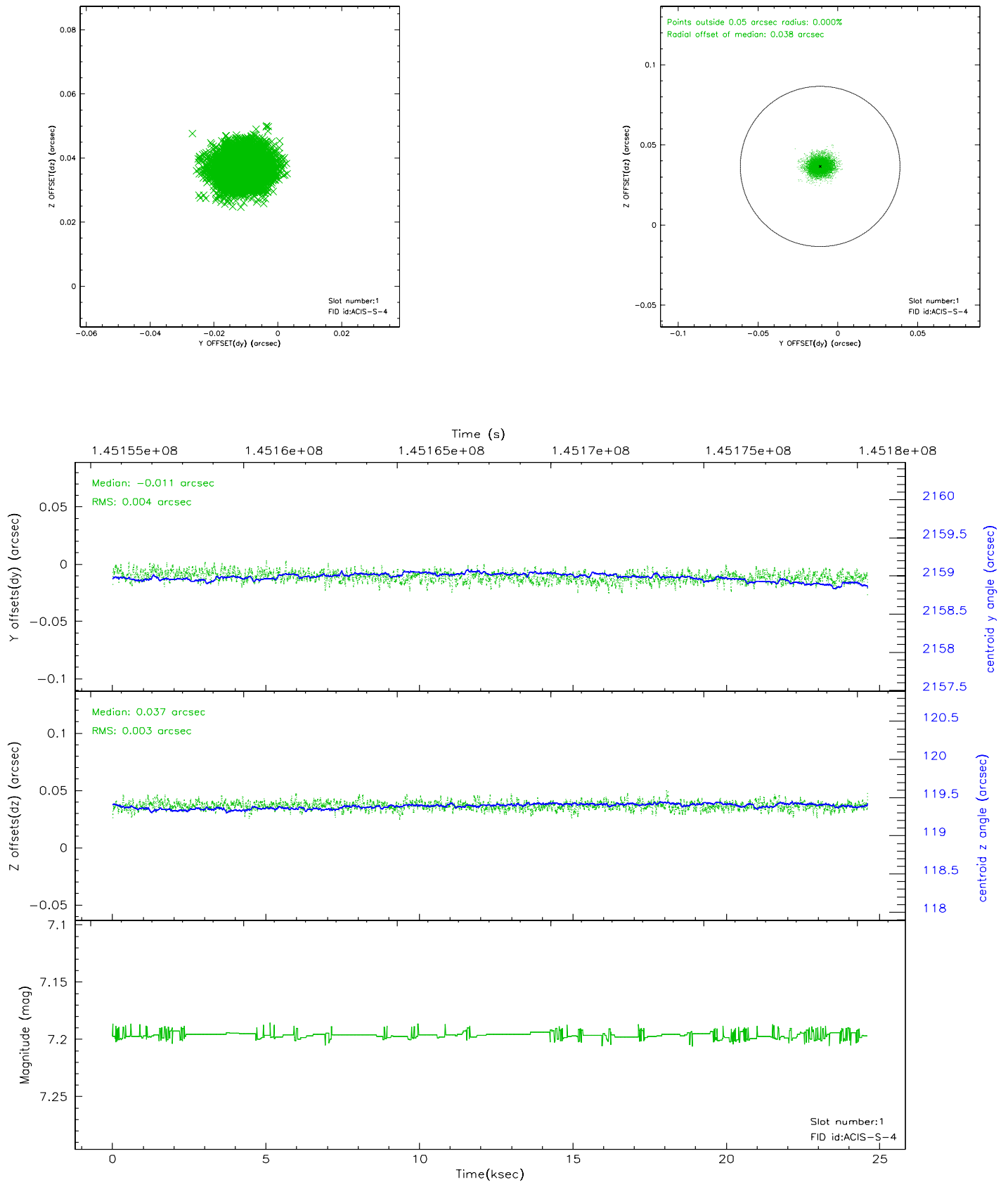


2.5 FID Slots

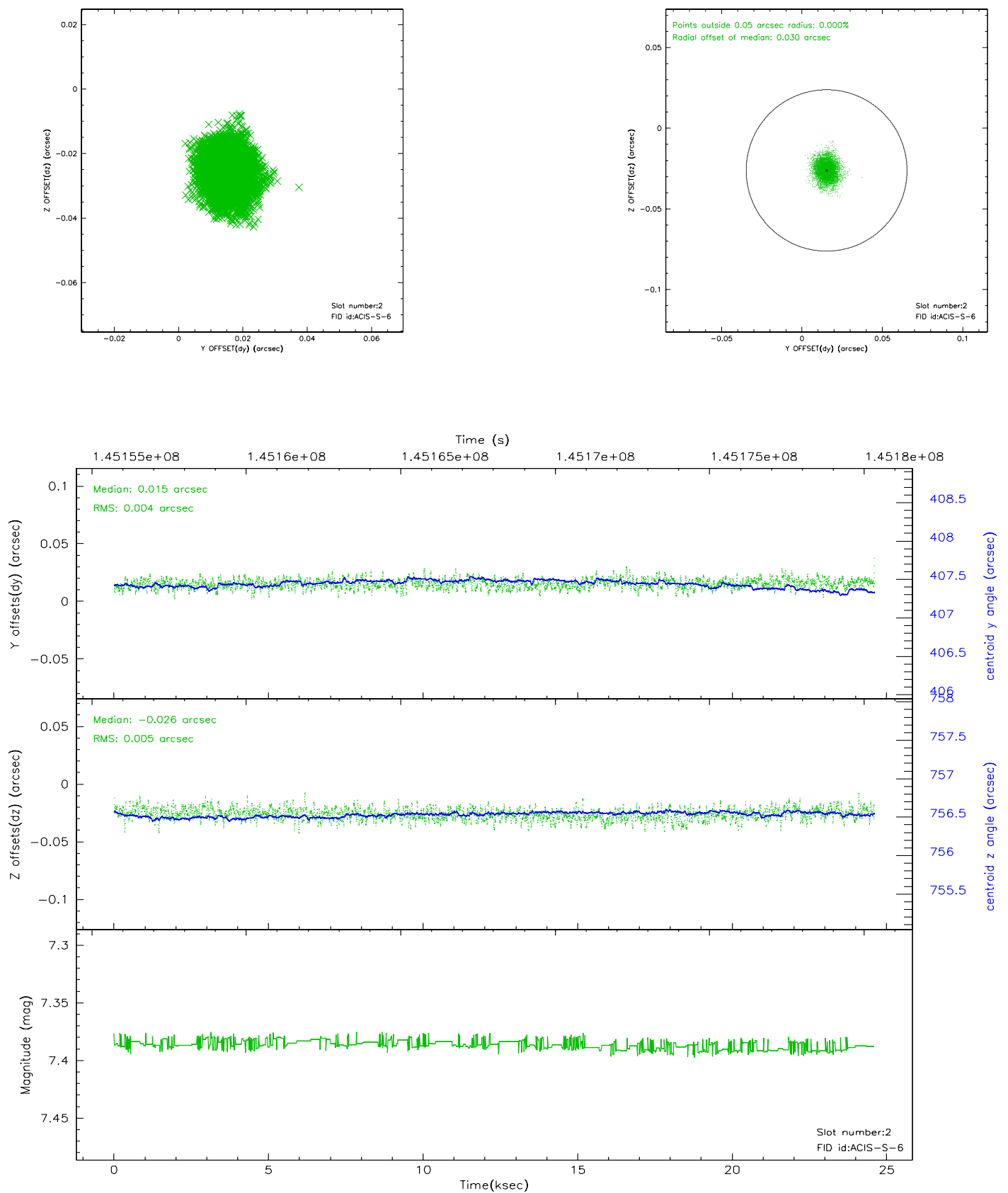
2.5.1 Slot 0



2.5.2 Slot 1

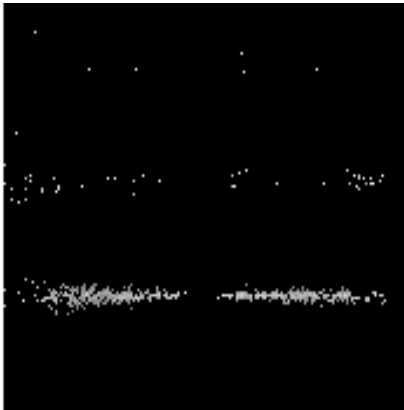


2.5.3 Slot 2



3 Gratings

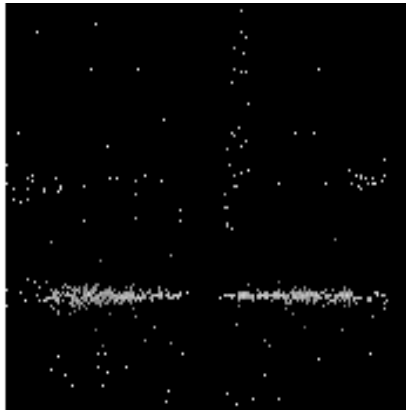
3.1 HEG Arm



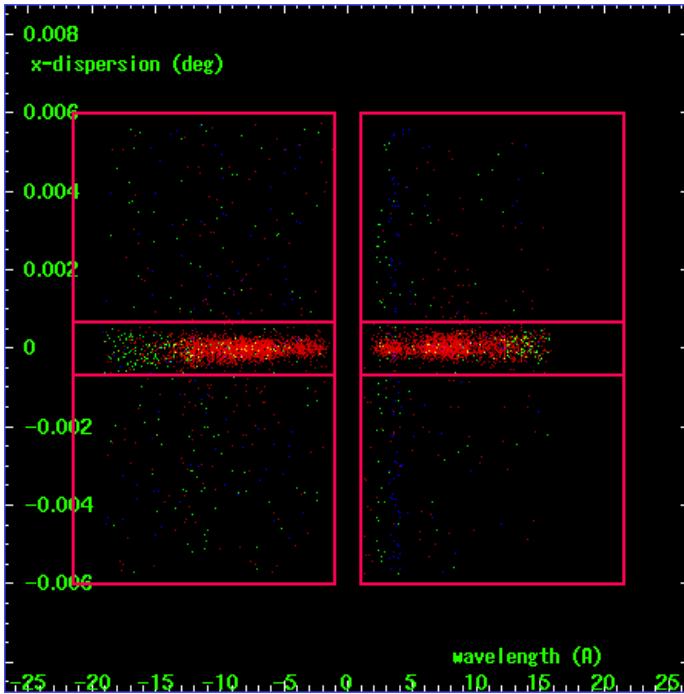
HEG Order Sort 123



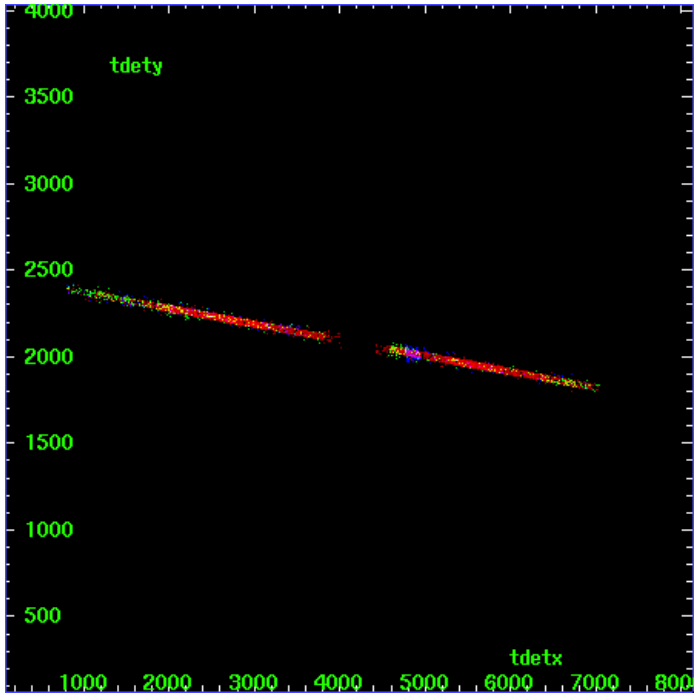
HEG Zero Order



HEG Order Sort ALL

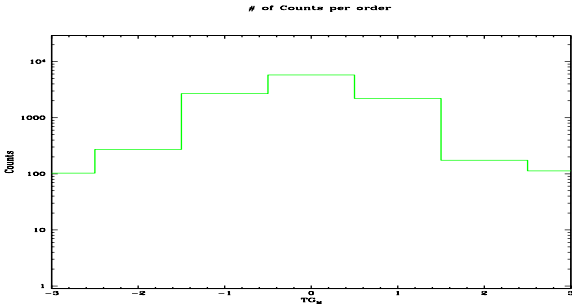


Spot Image HEG

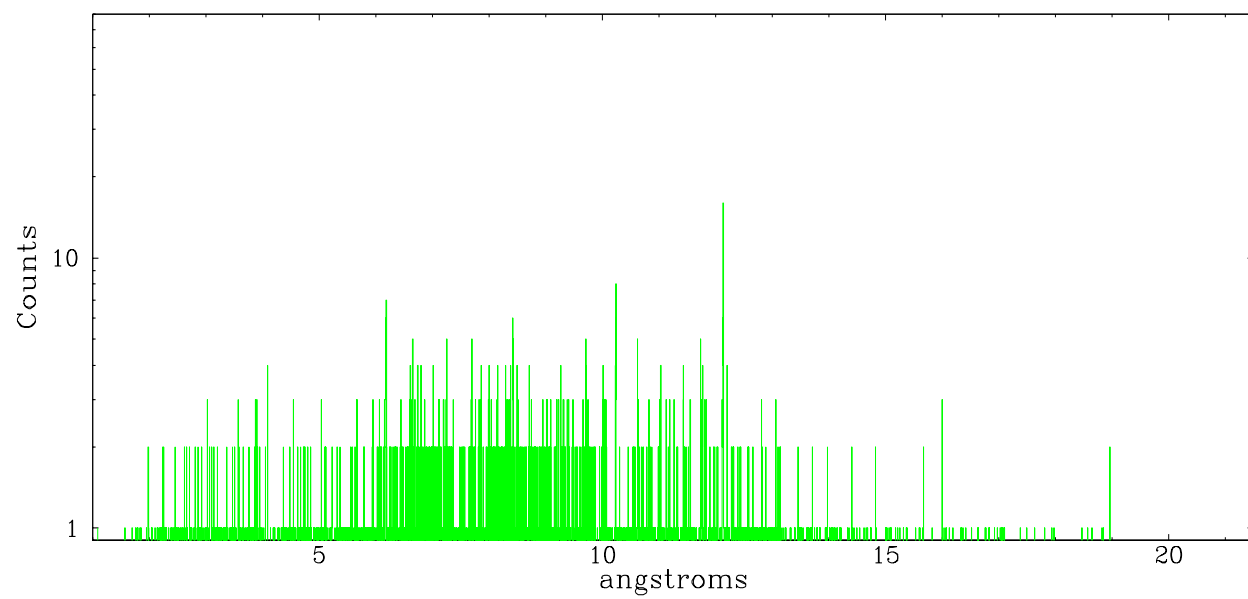


Full Detector HEG

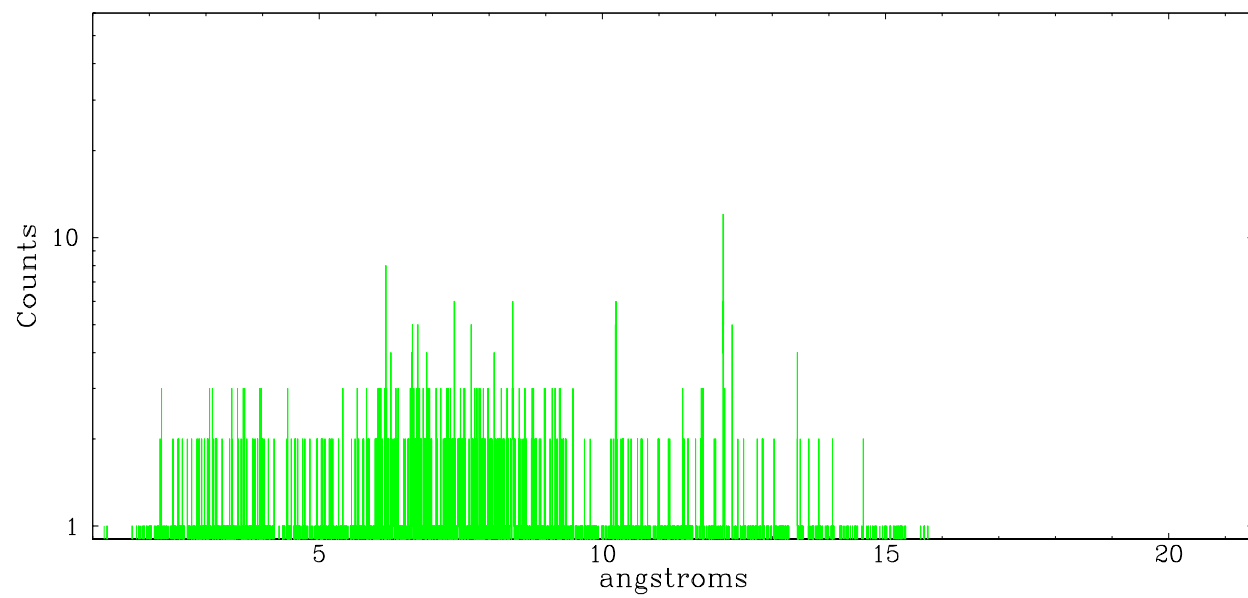
	order -3	order -2	order -1	order 0	order 1	order 2	order 3
Events	103	273	2685	5793	2204	174	113



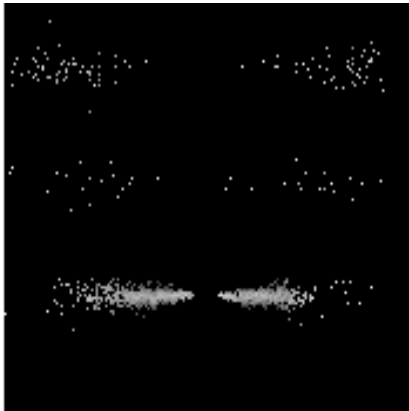
neg order -1



neg order +1



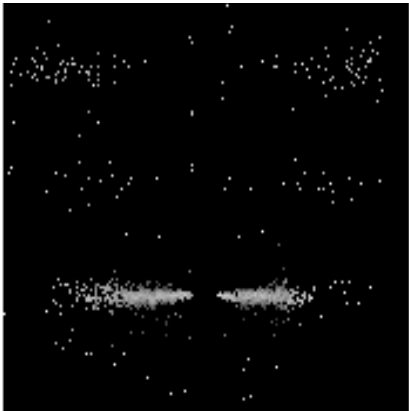
3.2 MEG Arm



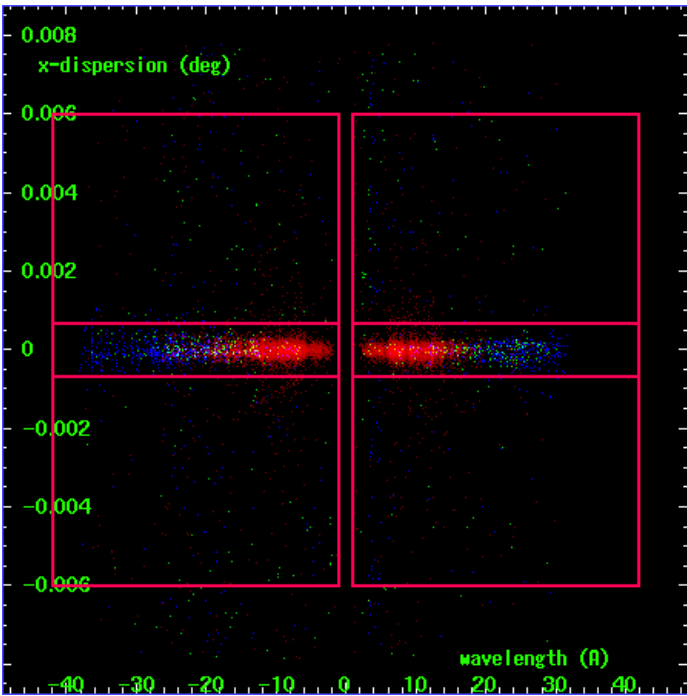
MEG Order Sort 123



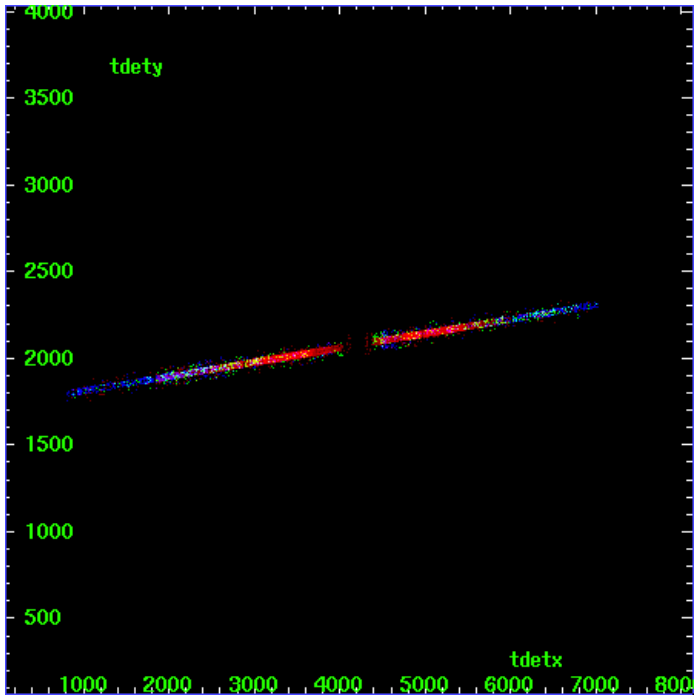
MEG Zero Order



MEG Order Sort ALL

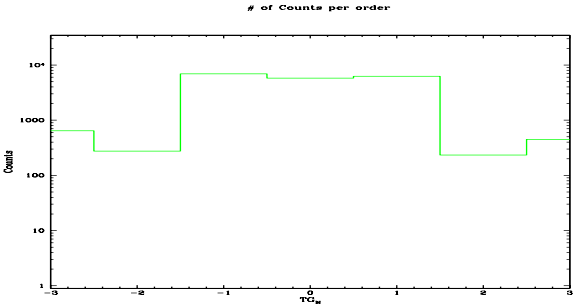


Spot Image MEG

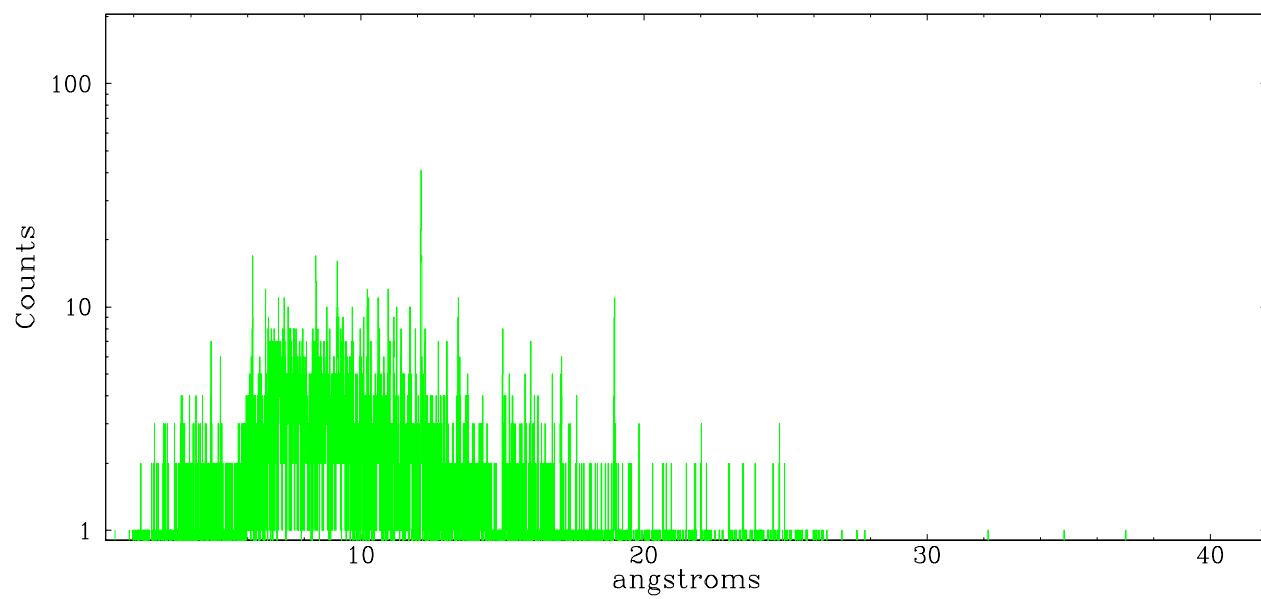


Full Detector MEG

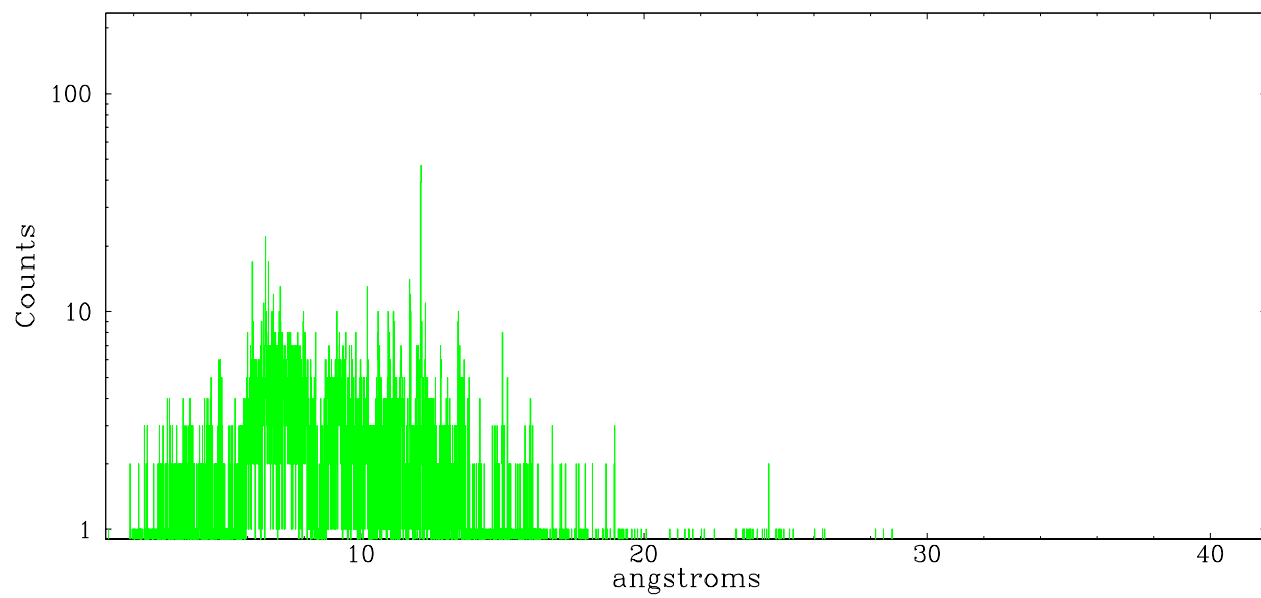
	order -3	order -2	order -1	order 0	order 1	order 2	order 3
Events	644	276	6911	5793	6235	233	448



meg order -1



meg order +1



A Summary

A.1 Status

V&V Scientist	Beth Sundheim
V&V Date (YYYY-MM-DD)	2006.10.06
V&V Edition	1
V&V Disposition and Status	OK
V&V Charge Time	24

A.2 Comments