

V&V Reference Report

L2 ASCDS Version : 7.6.9

Observation 2530 - L2 Version 001
Chandra X-Ray Center

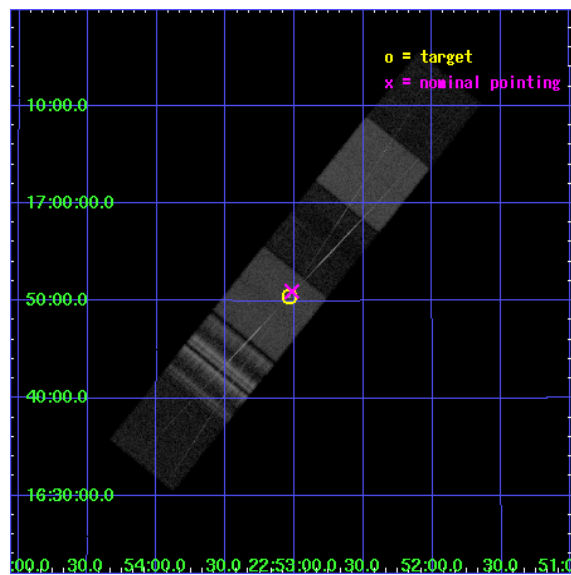
L2 Processing Date : Sep 26 2006

Contents

1	Front	2
2	OBI	3
2.1	OBI	3
2.1.1	Images	3
2.1.2	Bias	3
2.1.3	Parameters	4
2.1.4	Events	4
2.2	Compared Parameters	5
2.3	Aspect	6
2.4	Star Slots	9
2.4.1	Slot 3	9
2.4.2	Slot 4	10
2.4.3	Slot 5	11
2.4.4	Slot 6	12
2.4.5	Slot 7	13
2.5	FID Slots	14
2.5.1	Slot 0	14
2.5.2	Slot 1	15
2.5.3	Slot 2	16
3	Gratings	17
3.1	HEG Arm	17
3.2	MEG Arm	19
A	Summary	21
A.1	Status	21
A.2	Comments	21

1 Front

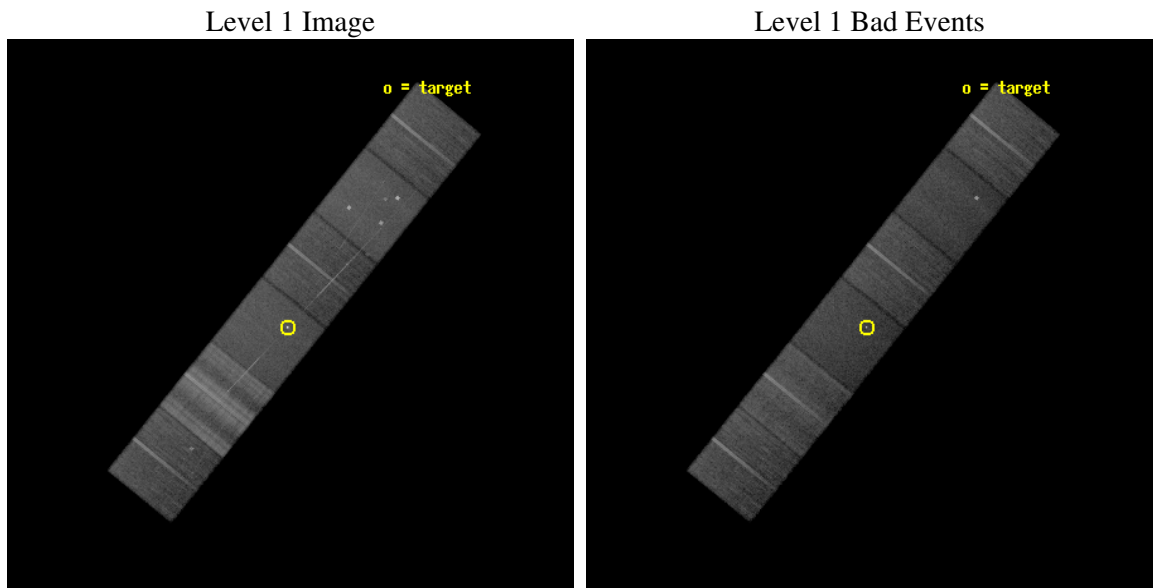
seq_num	200138
obs_id	2530
title	HETGS SPECTROSCOPY OF THE LONG-PERIOD ACTIVE BINARY, IM PEGASI.
observer	Dr. David Huenemoerder
object	IM PEG
dtcycle	0
cycle	P
ra_targ	343.259583
dec_targ	16.841194
ra_nom	343.25472134914
dec_nom	16.849685189811
roll_nom	128.91534454522
revision	2
ontime	24159.999909997
livetime	23854.071443731
ontime4	24159.999909997
ontime5	24159.999909997
ontime6	24159.999909997
ontime7	24159.999909997
ontime8	24159.999909997
ontime9	24159.999909997
l2events	340189



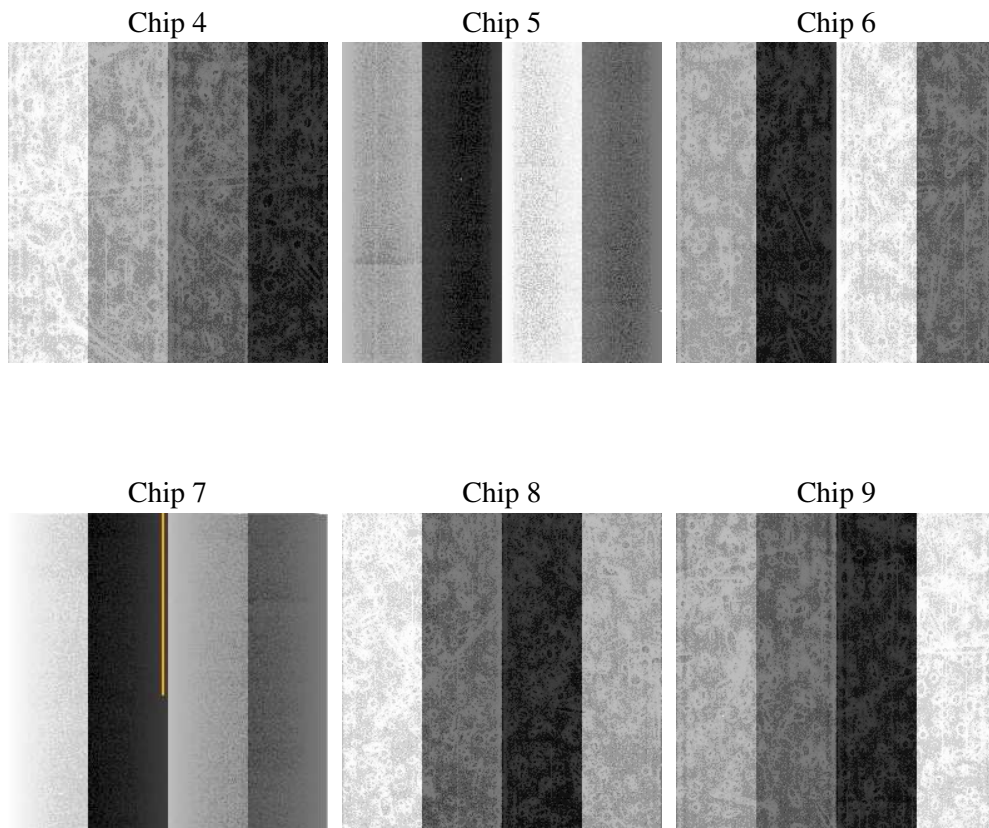
2 OBI

2.1 OBI

2.1.1 Images



2.1.2 Bias



2.1.3 Parameters

obi_num	1
ascdsver	7.6.9
caldsver	3.2.3
date	2006-09-26T09:21:21
revision	2

sched_exp_time	24000.000000
ontime	24414.471163422
ontime4	24414.471133471
ontime5	24414.471163422
ontime6	24414.471133471
ontime7	24414.471163422
ontime8	24414.471133471
ontime9	24417.712153584
l1events	1448341

2.1.4 Events

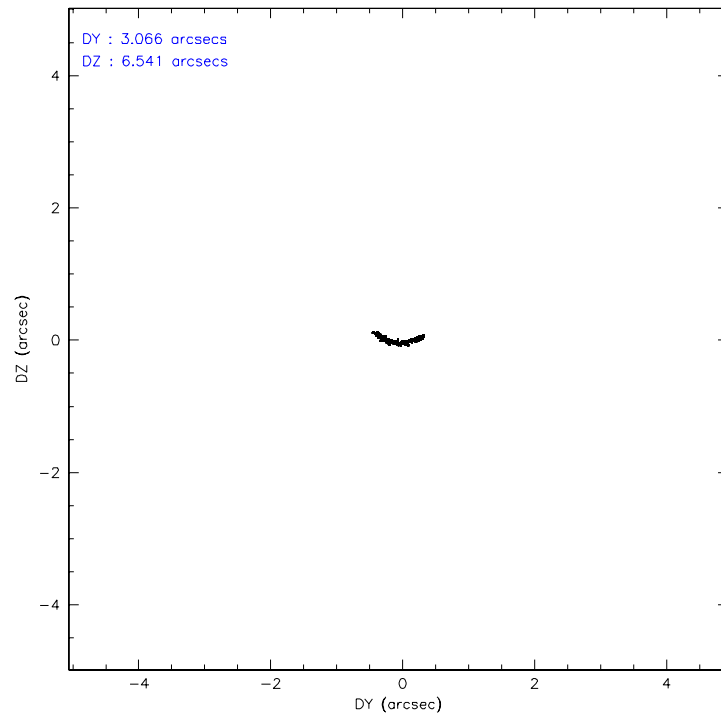
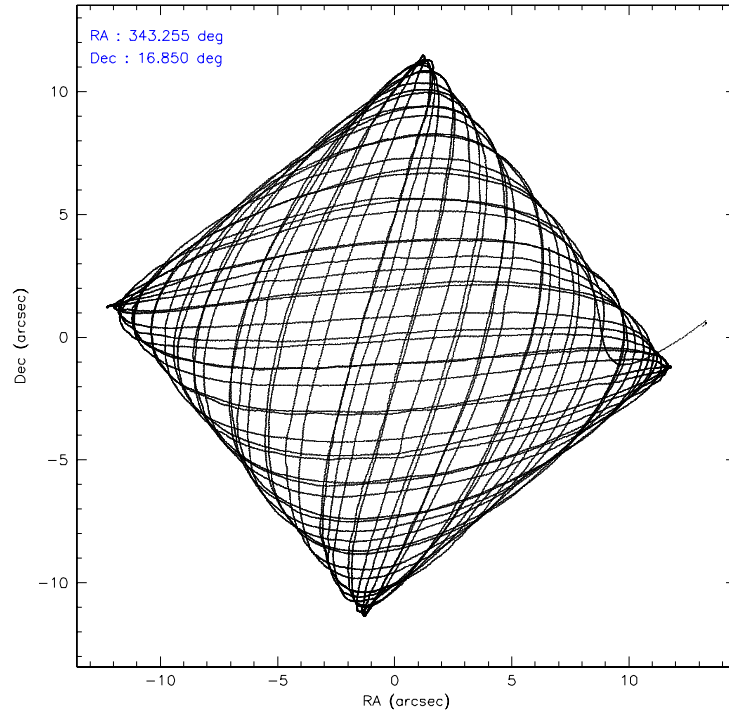
	ccd 4	ccd 5	ccd 6	ccd 7	ccd 8	ccd 9
level 1 events	215551	251184	200011	225813	367269	188513
rejected events	184933	138205	170276	134050	201324	163154
rejected %	85%	55%	85%	59%	54%	86%

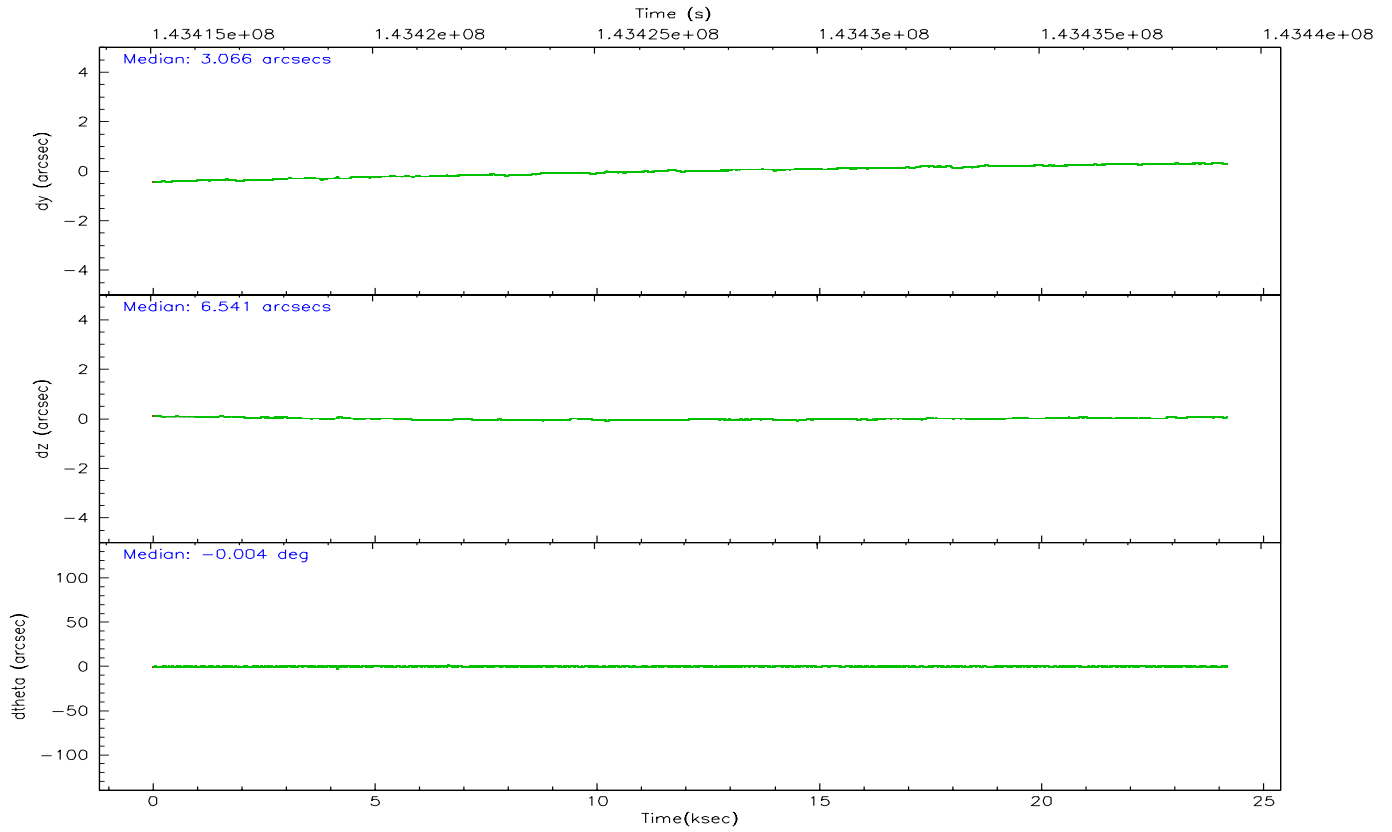
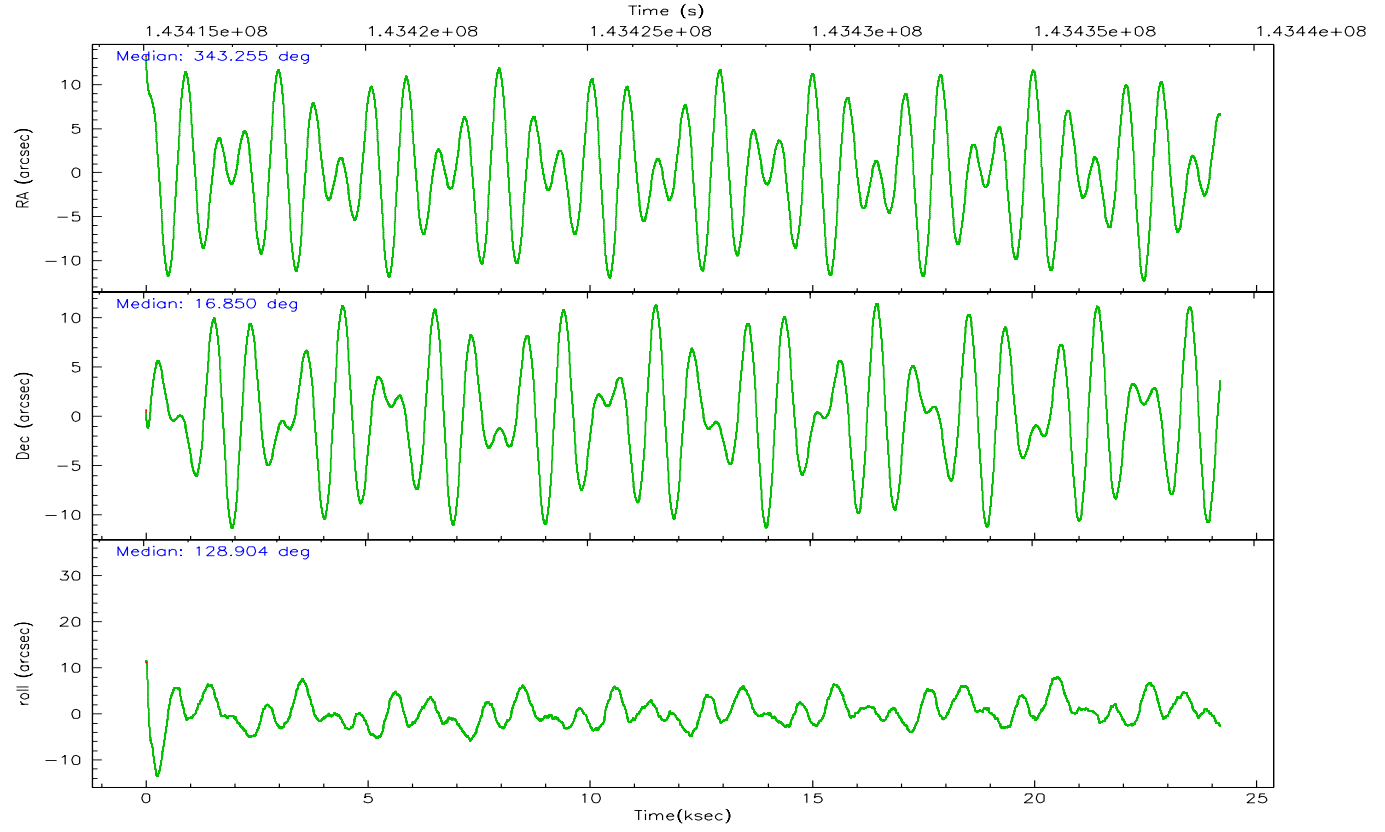
	ccd 4	ccd 5	ccd 6	ccd 7	ccd 8	ccd 9
grade 0 events	12708	13973	14262	6474	52104	10732
	5%	5%	7%	2%	14%	5%
grade 1 events	142	2604	105	267	417	103
	0%	1%	0%	0%	0%	0%
grade 2 events	9117	34099	6795	23620	25846	6044
	4%	13%	3%	10%	7%	3%
grade 3 events	2026	3266	2093	5296	27703	2072
	0%	1%	1%	2%	7%	1%
grade 4 events	2014	3328	1964	5282	24627	1930
	0%	1%	0%	2%	6%	1%
grade 5 events	6041	11686	7133	14773	10687	7374
	2%	4%	3%	6%	2%	3%
grade 6 events	5060	59537	4907	52064	37841	4845
	2%	23%	2%	23%	10%	2%
grade 7 events	178443	122691	162752	118037	188044	155413
	82%	48%	81%	52%	51%	82%

2.2 Compared Parameters

Parameter	Planned	Actual	Parameter	Planned	Actual
Instrument	ACIS	ACIS	Obspar format version number	6	6
Detector	ACIS-456789	ACIS-456789	Obspar file type	PREDICTED	ACTUAL
Grating	HETG	HETG	Obspar update status	NONE	UPDATED
Data mode	FAINT	FAINT	Number of optional ACIS chips dropped	0	0
Observation mode	POINTING	POINTING	On-chip summing requested	N	N
Pointing RA	343.281391	343.2547213491356	Subarray requested	NONE	NONE
Pointing Dec	16.840215	16.84968518981067	Alternating exposures requested	N	N
Pointing Roll	128.750982	128.9153445452203	Primary exposure time	0.000000	3.2
SIM focus pos (mm)	-0.684267	-0.6828225247311905			
SIM defocus (mm)	0	0.001444936568705701			
SIM translation stage pos (mm)	-187.132523	-187.1228876879999			
SIM translation stage offset (mm)	-3	-3.009634895007935			
Observation start time	143415227.184000	143414038.97239			
Observation start date	2002-07-18T21:32:43	2002-07-18T21:13:58			
Observation end time	143439227.184000	143439960.19846			
Observation end date	2002-07-19T04:12:43	2002-07-19T04:26:00			
Read mode	TIMED	TIMED			

2.3 Aspect



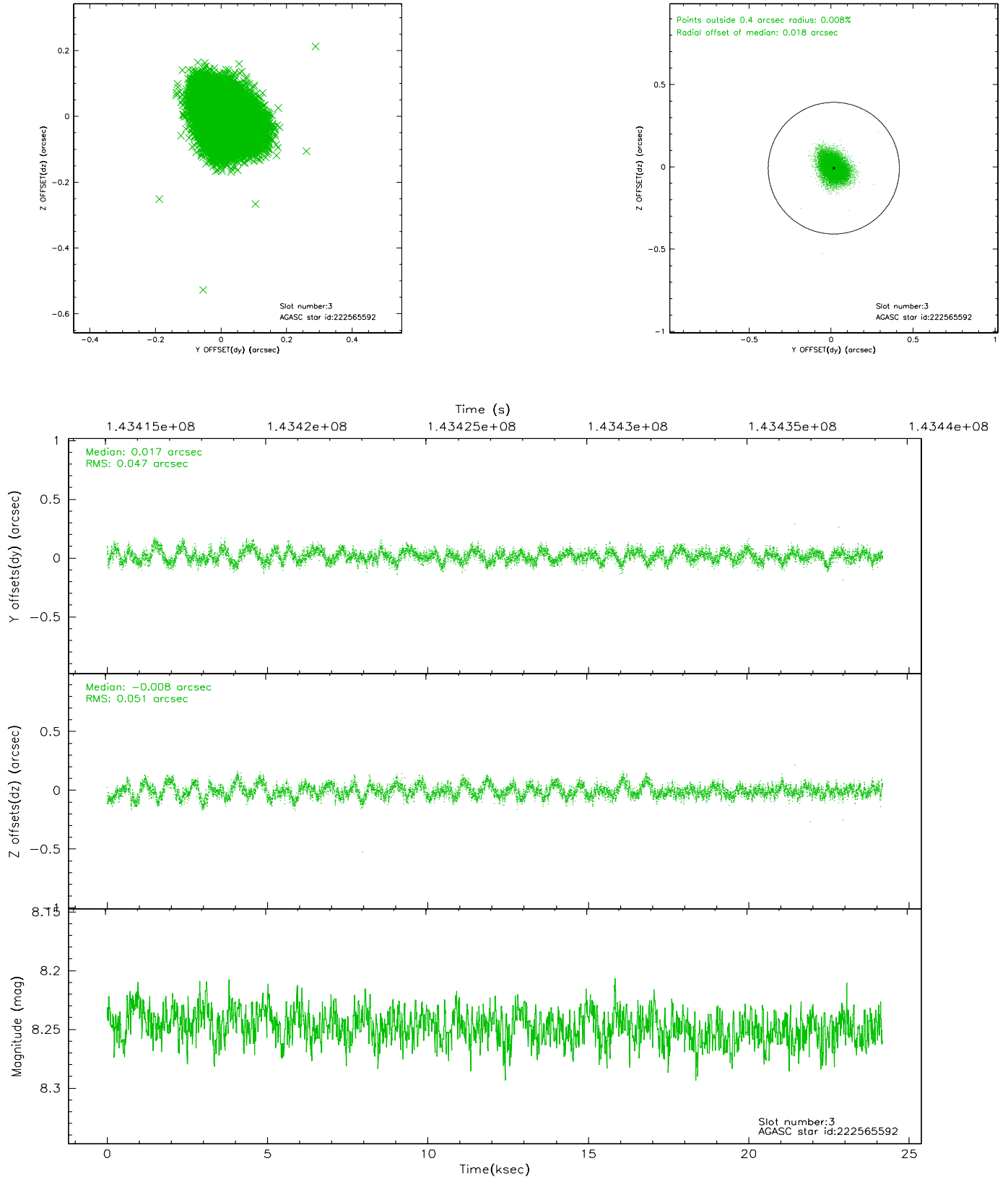


Slot Statistics

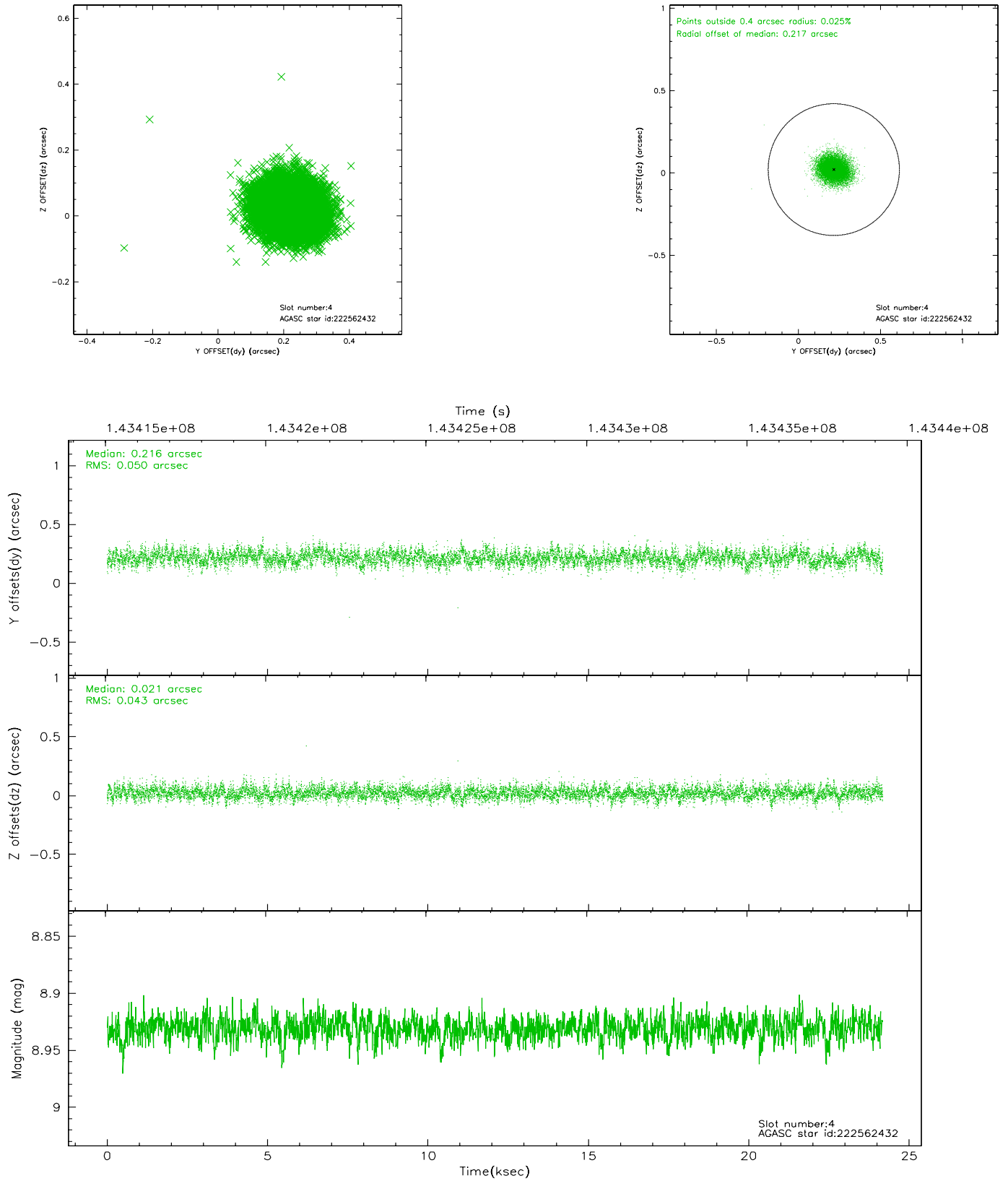
slot	status	id	mag	n_pts	med_dy	med_dz	dr1	dr2	ra	dec	mean_y	mean_z
0	FID	ACIS-S-2	7.10	5897	-0.022	-0.031	0.008	0.014	0.000000	0.000000	-755.50	-1789.87
1	FID	ACIS-S-4	7.19	5897	-0.034	0.019	0.015	0.023	0.000000	0.000000	2157.70	118.53
2	FID	ACIS-S-5	7.23	5896	0.023	0.020	0.013	0.024	0.000000	0.000000	-1808.14	112.33
3	GUIDE	222565592	8.25	11769	0.017	-0.008	0.074	0.120	343.291662	16.508291	-954.63	720.70
4	GUIDE	222562432	8.93	11790	0.216	0.021	0.069	0.115	343.698150	16.309399	-2390.88	72.16
5	GUIDE	222563736	8.82	11791	0.070	-0.163	0.074	0.118	343.076284	16.308502	-1049.97	1750.36
6	GUIDE	223089808	9.08	11788	-0.288	0.194	0.083	0.141	343.220223	17.508272	2006.29	-1340.89
7	GUIDE	222571232	9.55	11721	-0.009	-0.046	0.089	0.145	343.021766	16.540282	-281.27	1374.47

2.4 Star Slots

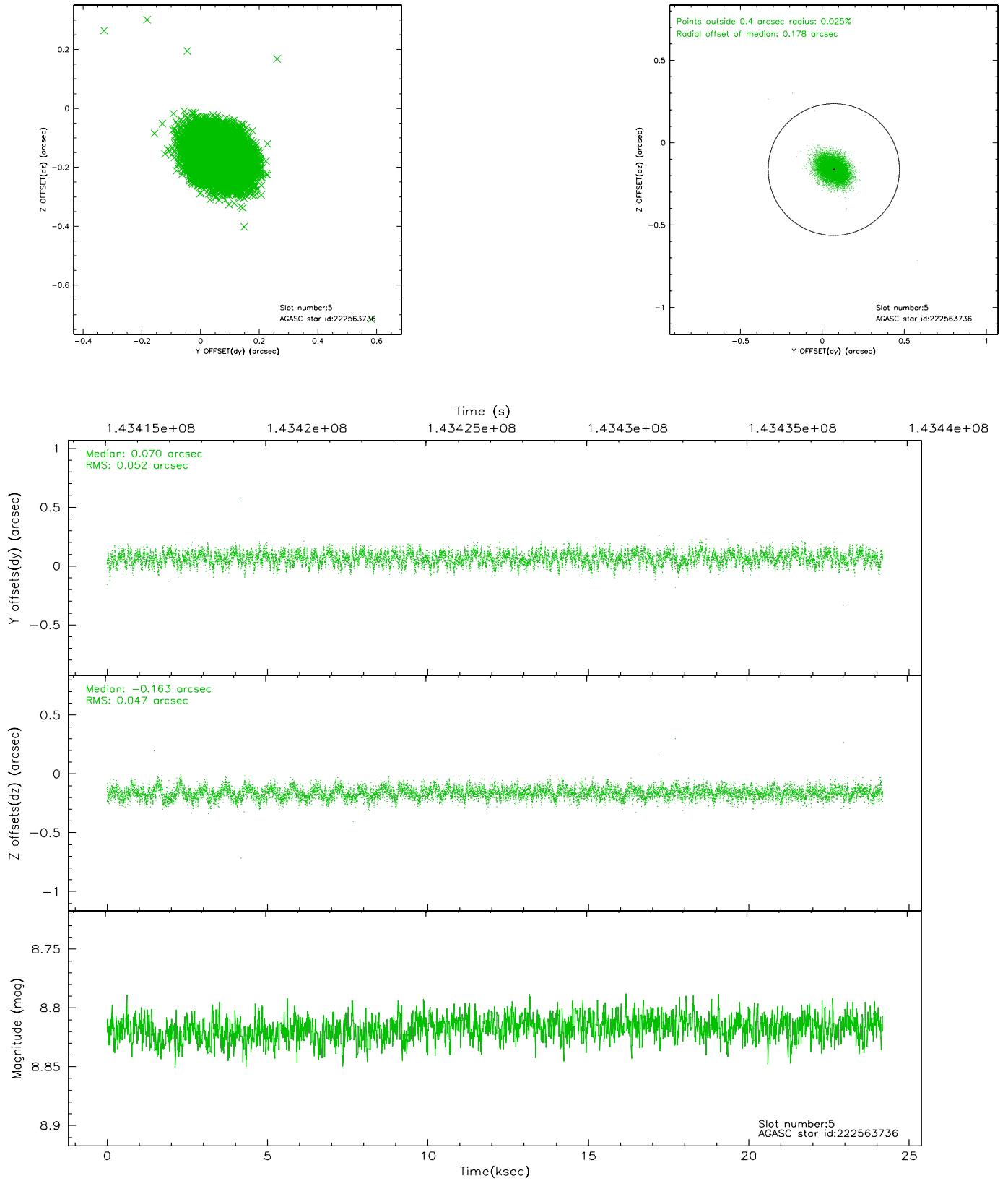
2.4.1 Slot 3



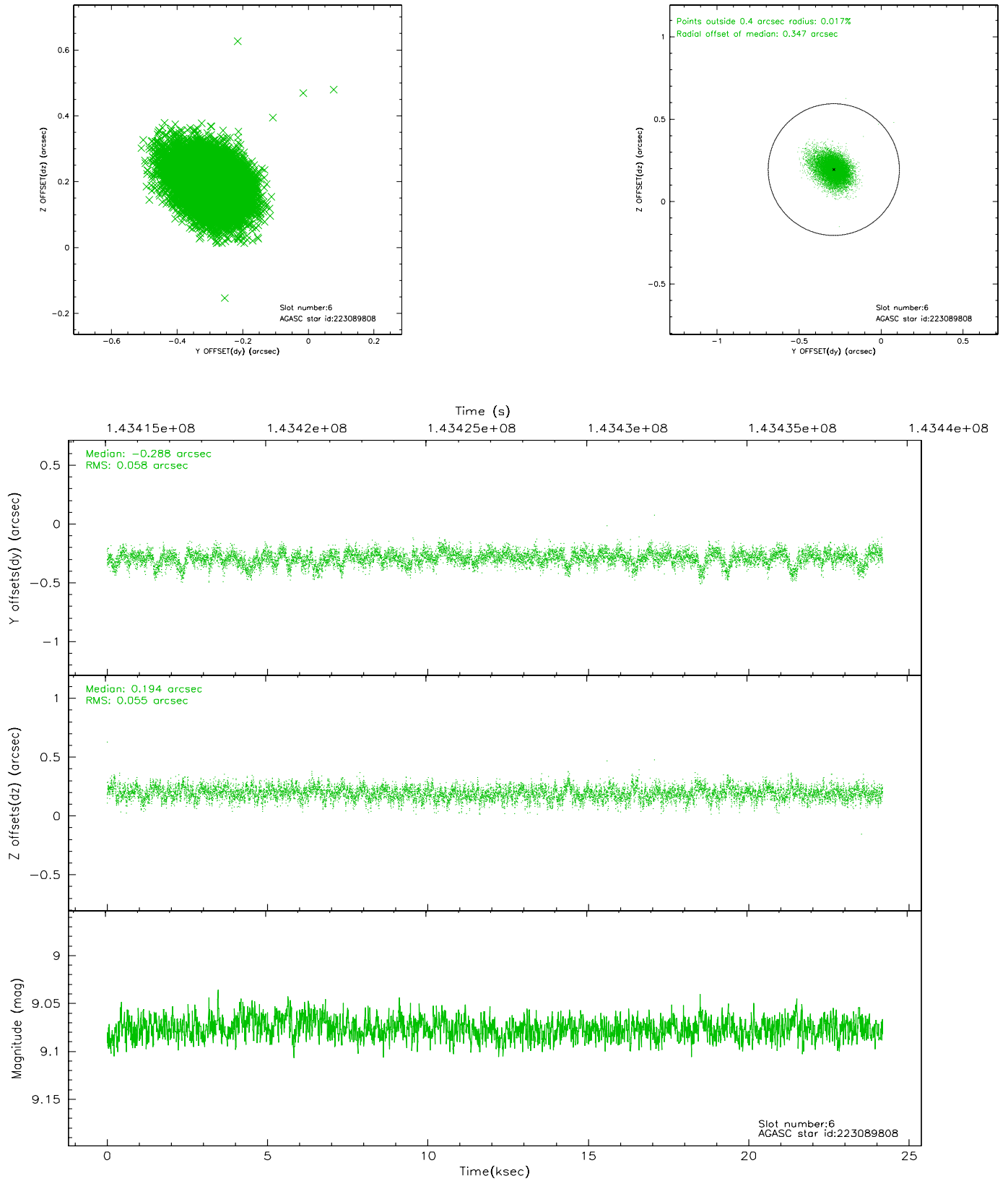
2.4.2 Slot 4



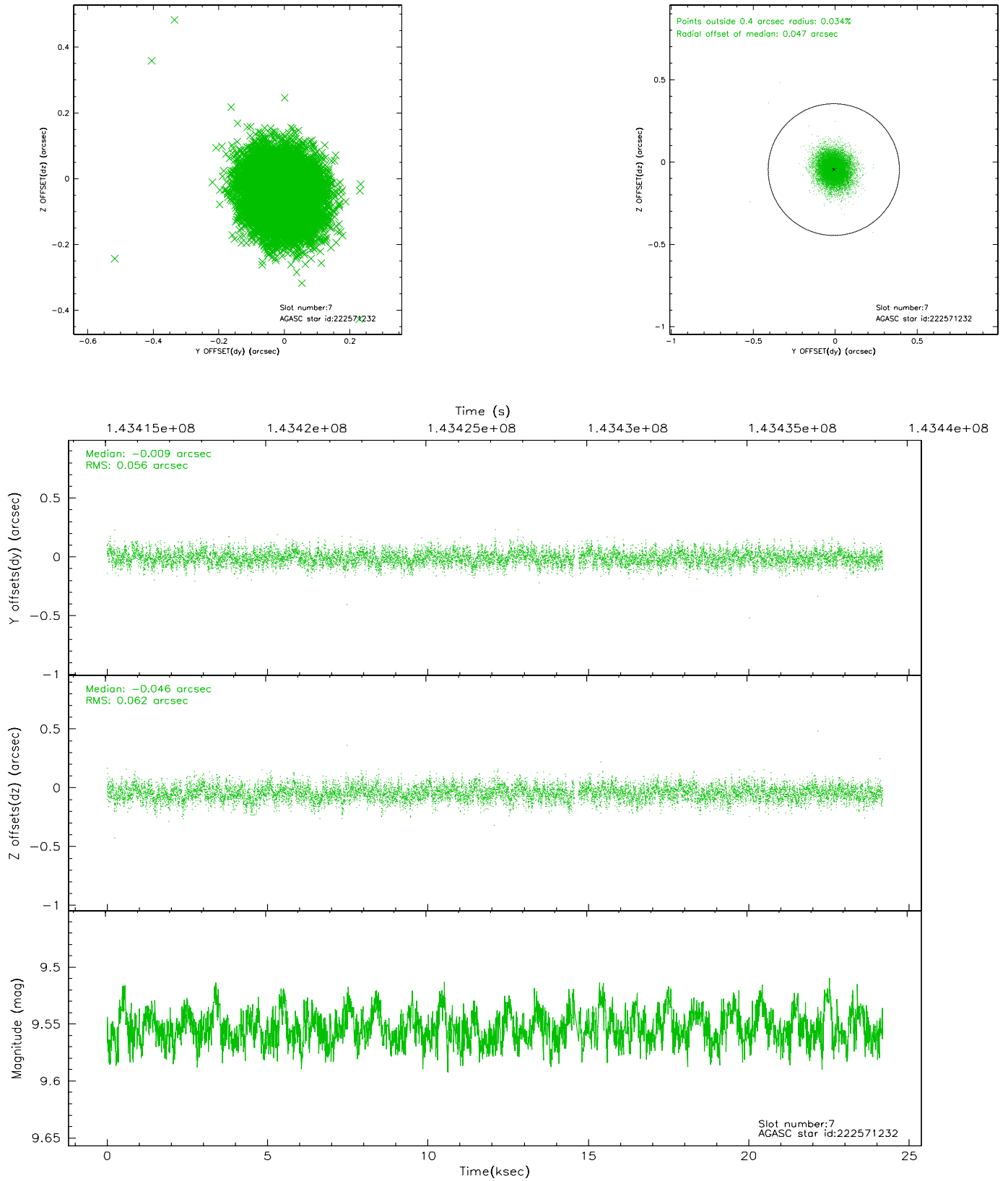
2.4.3 Slot 5



2.4.4 Slot 6

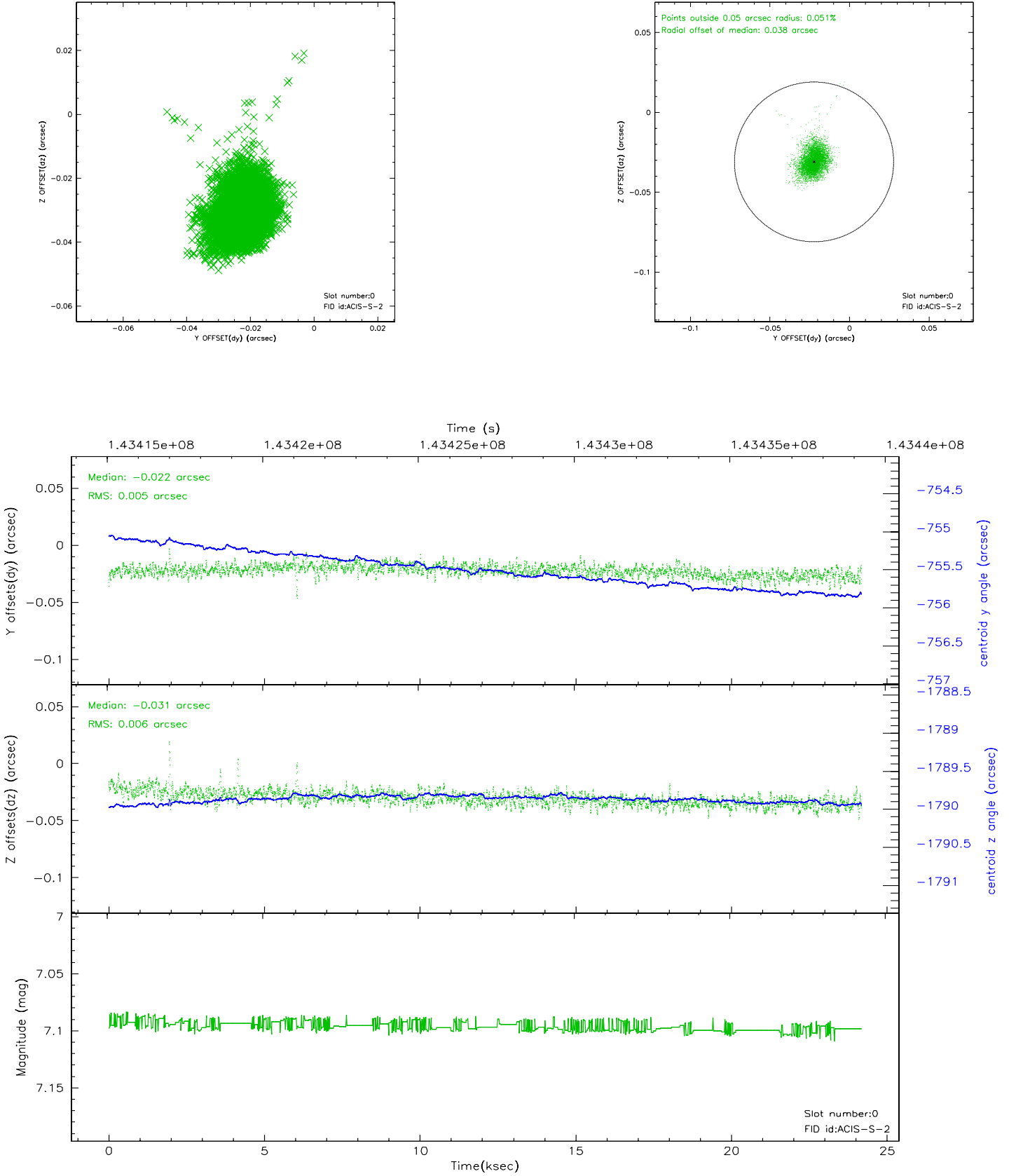


2.4.5 Slot 7

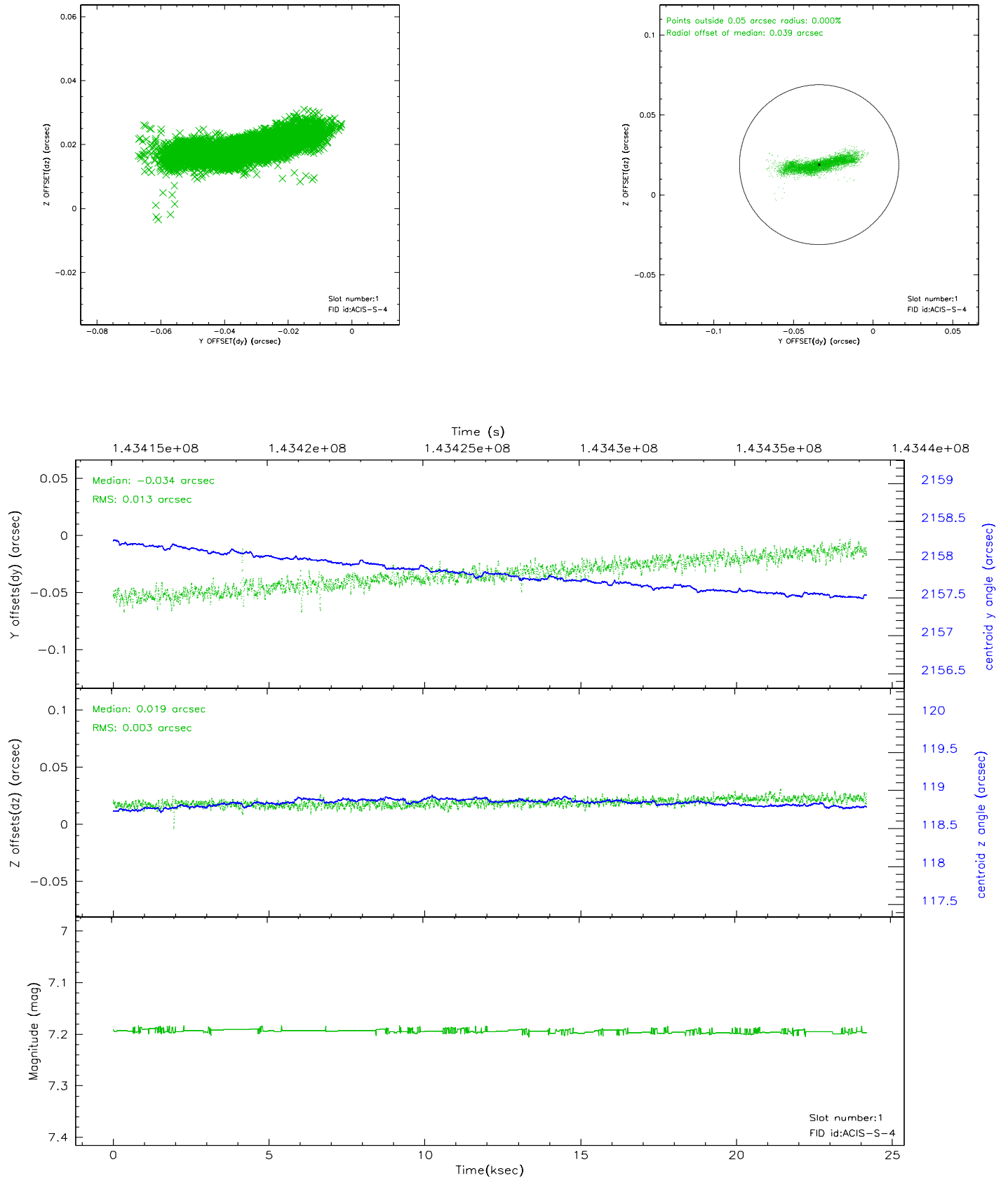


2.5 FID Slots

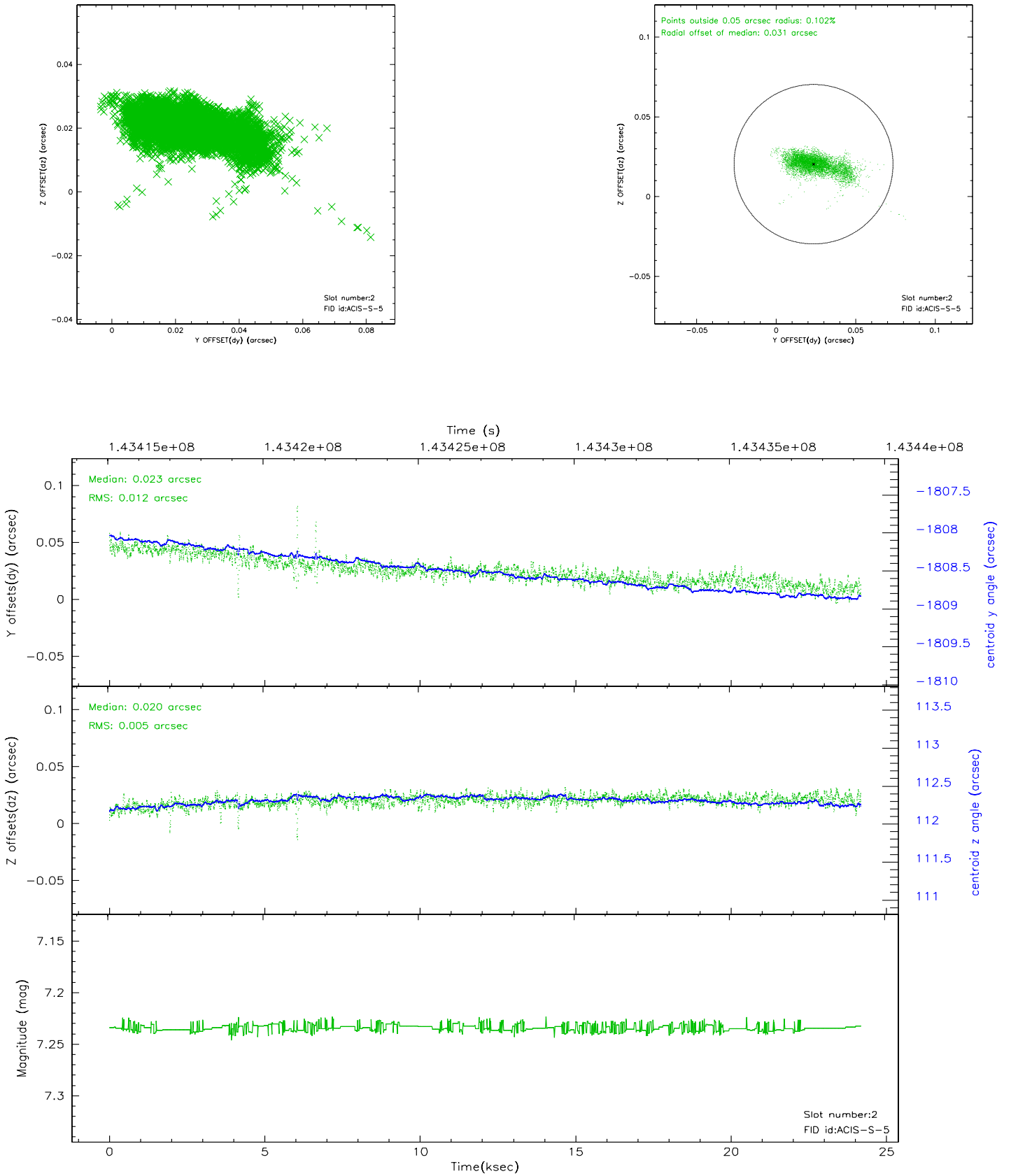
2.5.1 Slot 0



2.5.2 Slot 1



2.5.3 Slot 2



3 Gratings

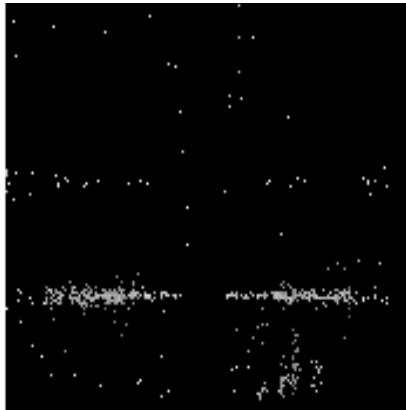
3.1 HEG Arm



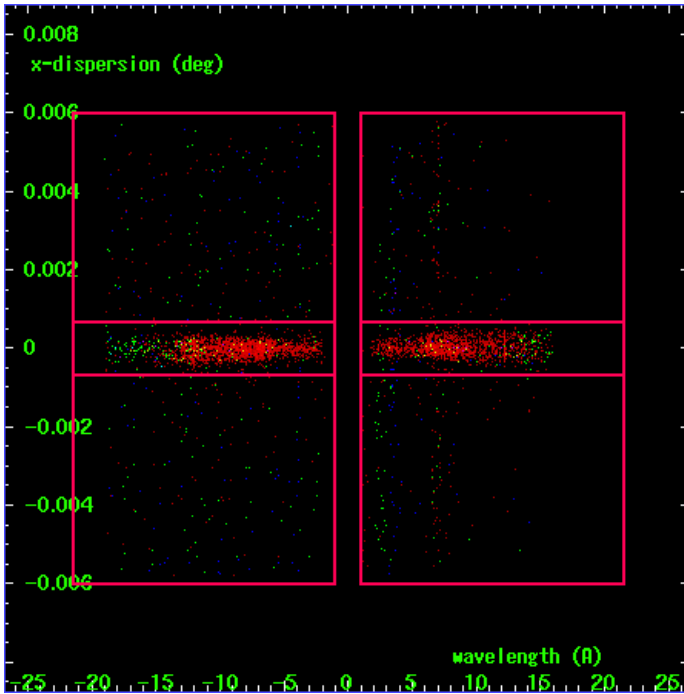
HEG Order Sort 123



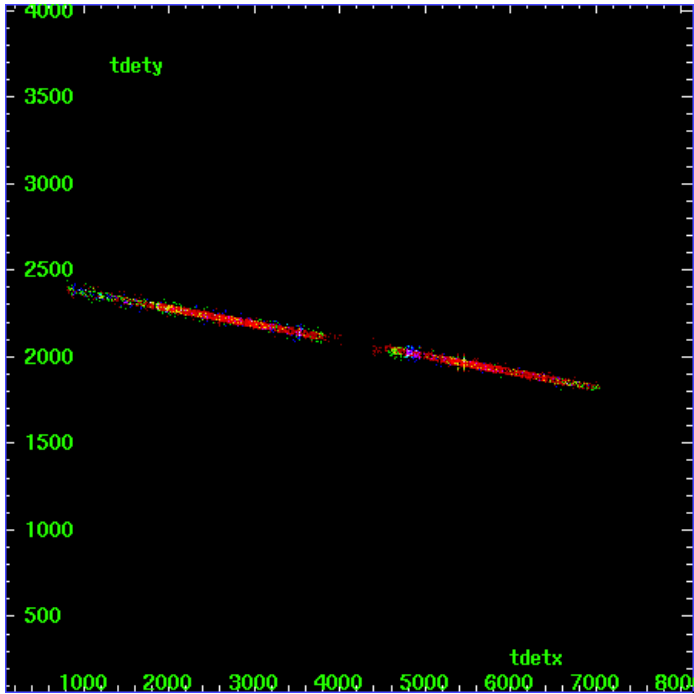
HEG Zero Order



HEG Order Sort ALL

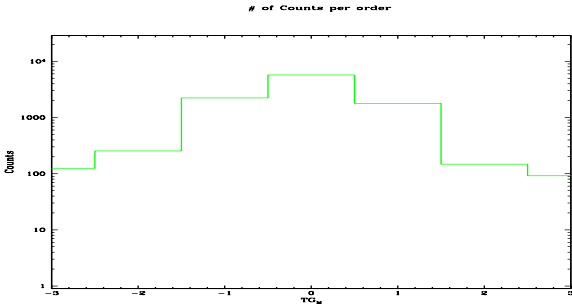


Spot Image HEG

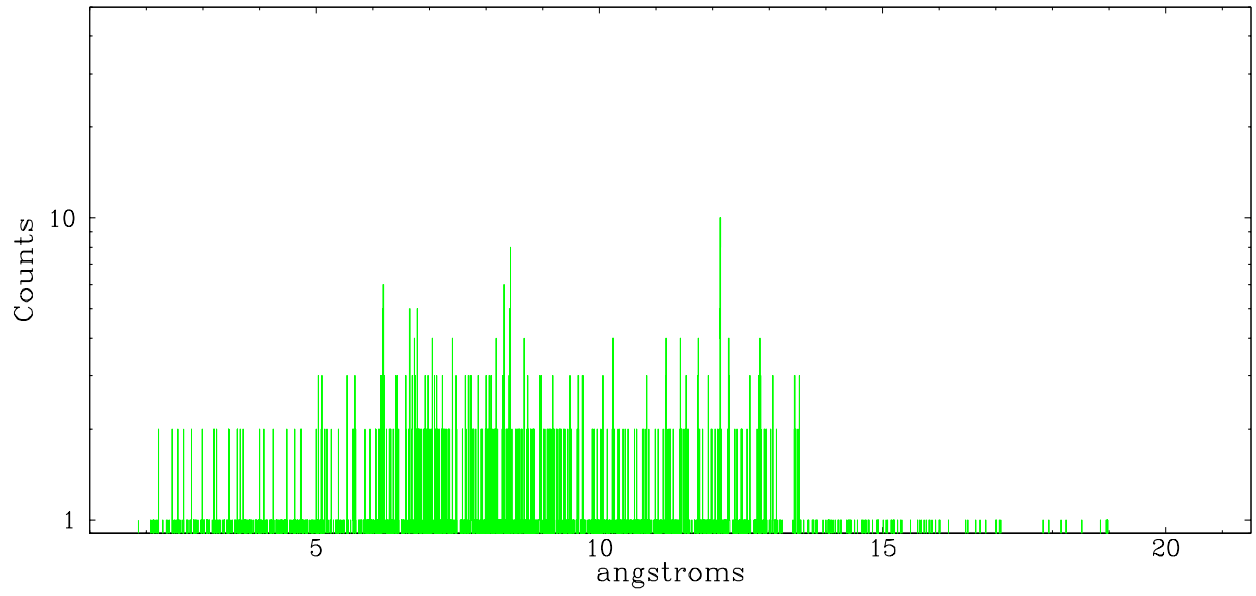


Full Detector HEG

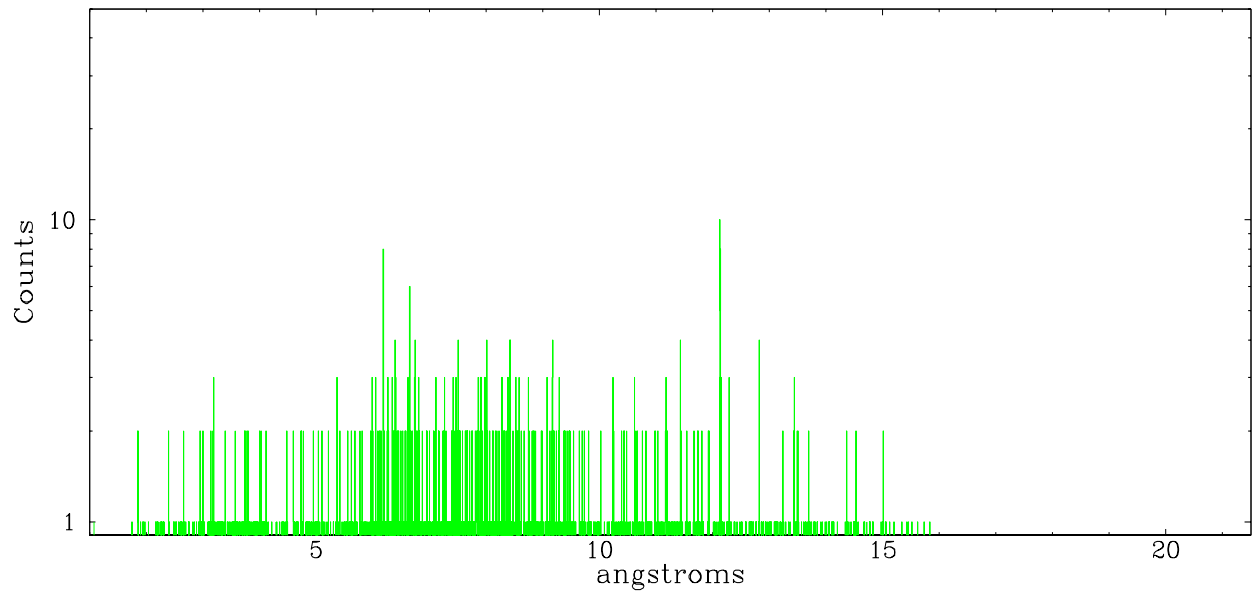
	order -3	order -2	order -1	order 0	order 1	order 2	order 3
Events	125	254	2233	5728	1784	148	92



heg order -1



heg order +1



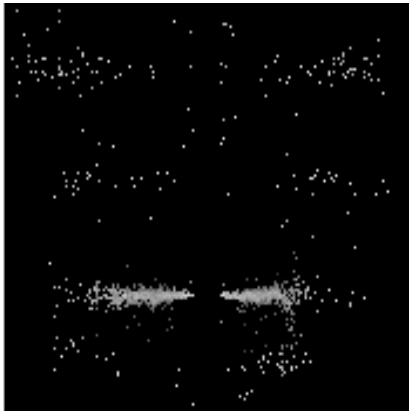
3.2 MEG Arm



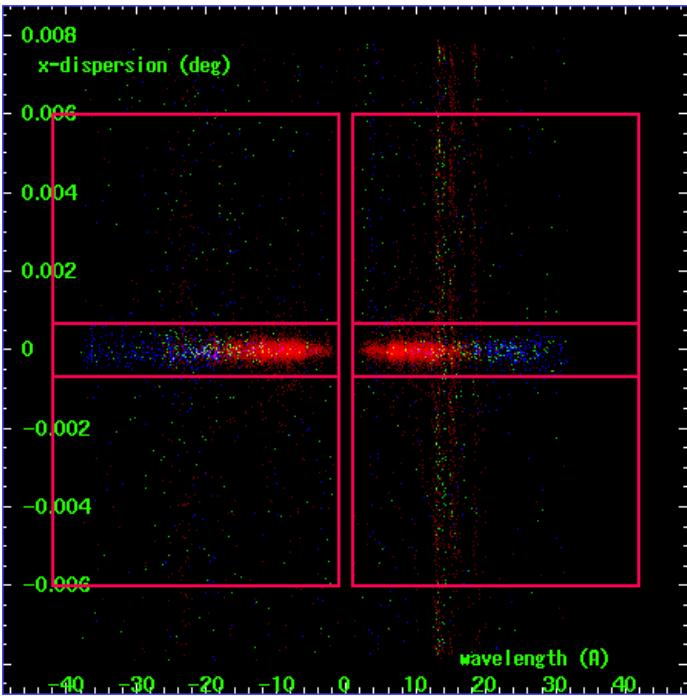
MEG Order Sort 123



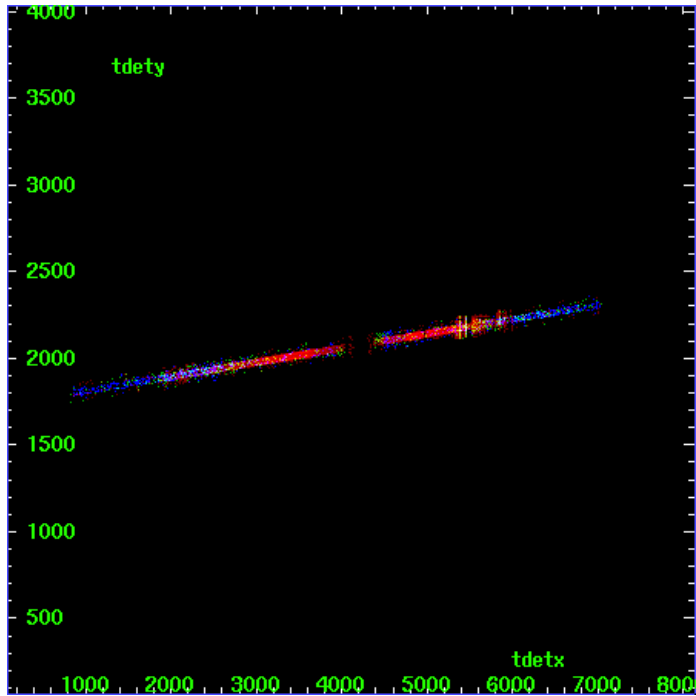
MEG Zero Order



MEG Order Sort ALL

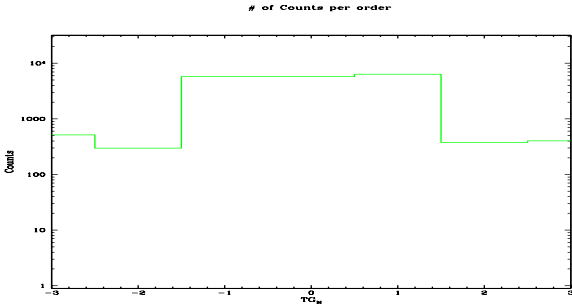


Spot Image MEG

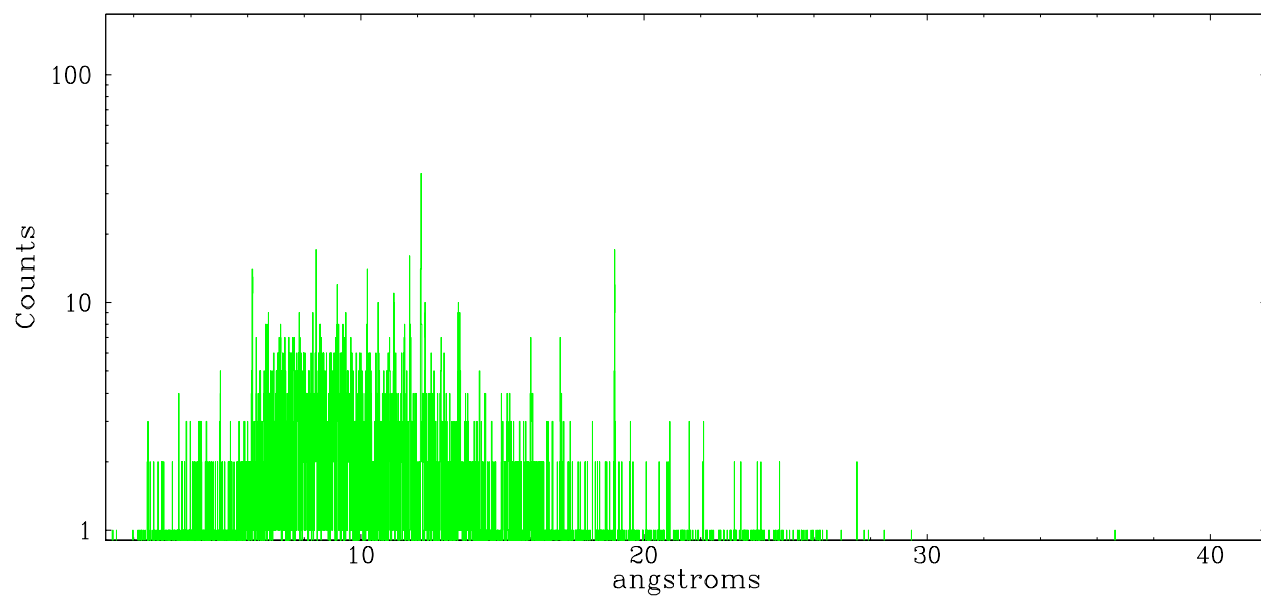


Full Detector MEG

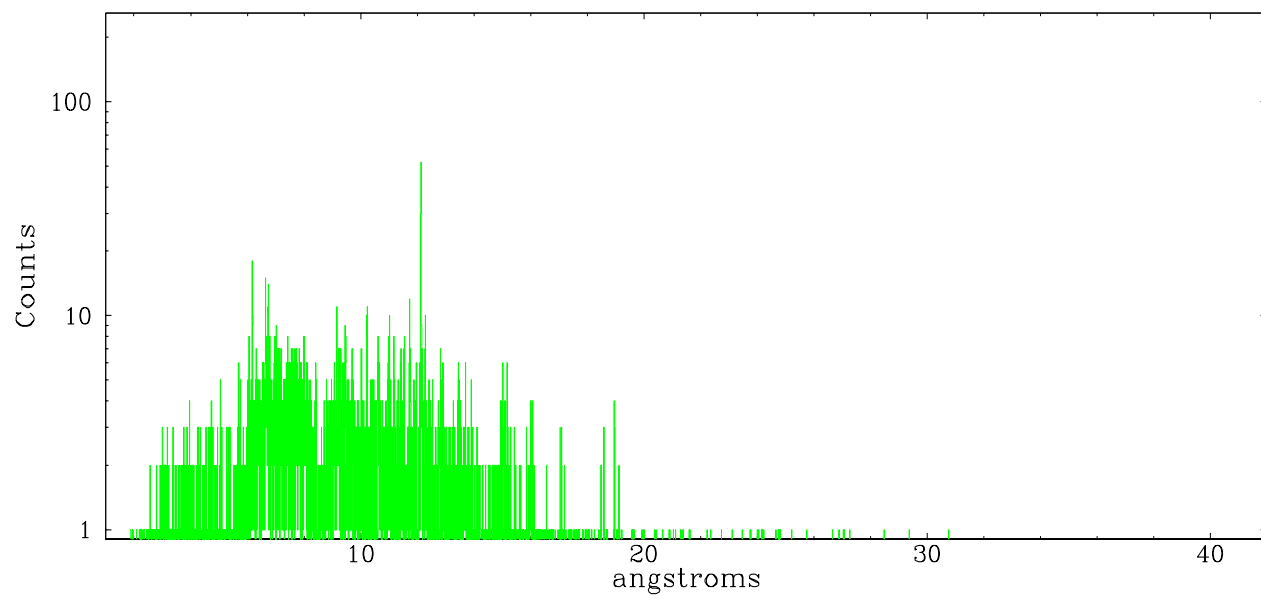
	order -3	order -2	order -1	order 0	order 1	order 2	order 3
Events	517	298	5752	5728	6372	380	403



meg order -1



meg order +1



A Summary

A.1 Status

V&V Scientist	Joy Nichols
V&V Date (YYYY-MM-DD)	2006.09.26
V&V Edition	1
V&V Disposition and Status	OK
V&V Charge Time	24.159

A.2 Comments