

V&V Reference Report

L2 ASCDS Version : 7.6.8.1

Observation 2525 - L2 Version 001
Chandra X-Ray Center

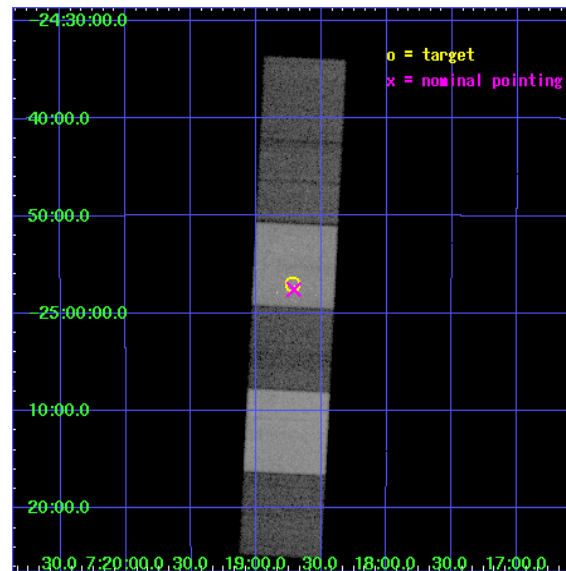
L2 Processing Date : Sep 9 2006

Contents

1	Front	2
2	OBI	3
2.1	OBI	3
2.1.1	Images	3
2.1.2	Bias	3
2.1.3	Parameters	4
2.1.4	Events	4
2.2	Compared Parameters	5
2.3	Aspect	6
2.4	Star Slots	9
2.4.1	Slot 3	9
2.4.2	Slot 4	10
2.4.3	Slot 5	11
2.4.4	Slot 6	12
2.4.5	Slot 7	13
2.5	FID Slots	14
2.5.1	Slot 0	14
2.5.2	Slot 1	15
2.5.3	Slot 2	16
3	Gratings	17
3.1	HEG Arm	17
3.2	MEG Arm	19
A	Summary	21
A.1	Status	21
A.2	Comments	21

1 Front

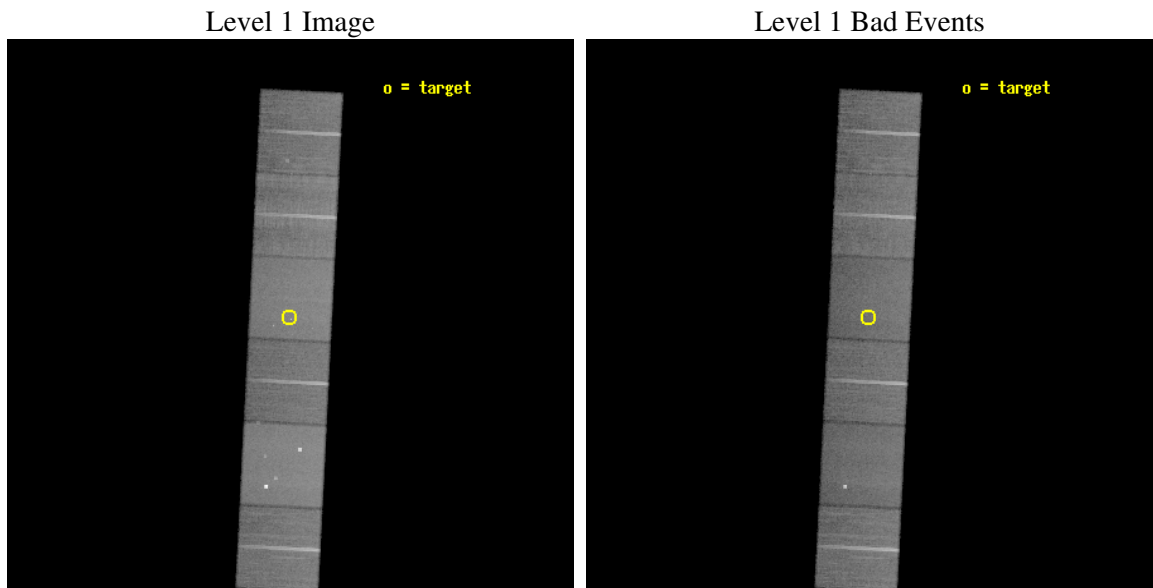
seq_num	200133
obs_id	2525
title	HIGH RESOLUTION SPECTROSCOPY OF THE YOUNG STELLAR CLUSTER NGC 2362
observer	Prof. Claude Canizares
object	NGC2362
dtcycle	0
cycle	P
ra_targ	109.679167
dec_targ	-24.949972
ra_nom	109.67780742659
dec_nom	-24.959586296376
roll_nom	272.86819895786
revision	2
ontime	43756.759080499
livetime	43202.684649865
ontime4	43750.277169928
ontime5	43756.759080499
ontime6	43760.000040755
ontime7	43756.759080499
ontime8	43756.759070486
ontime9	43753.518090308
l2events	402149



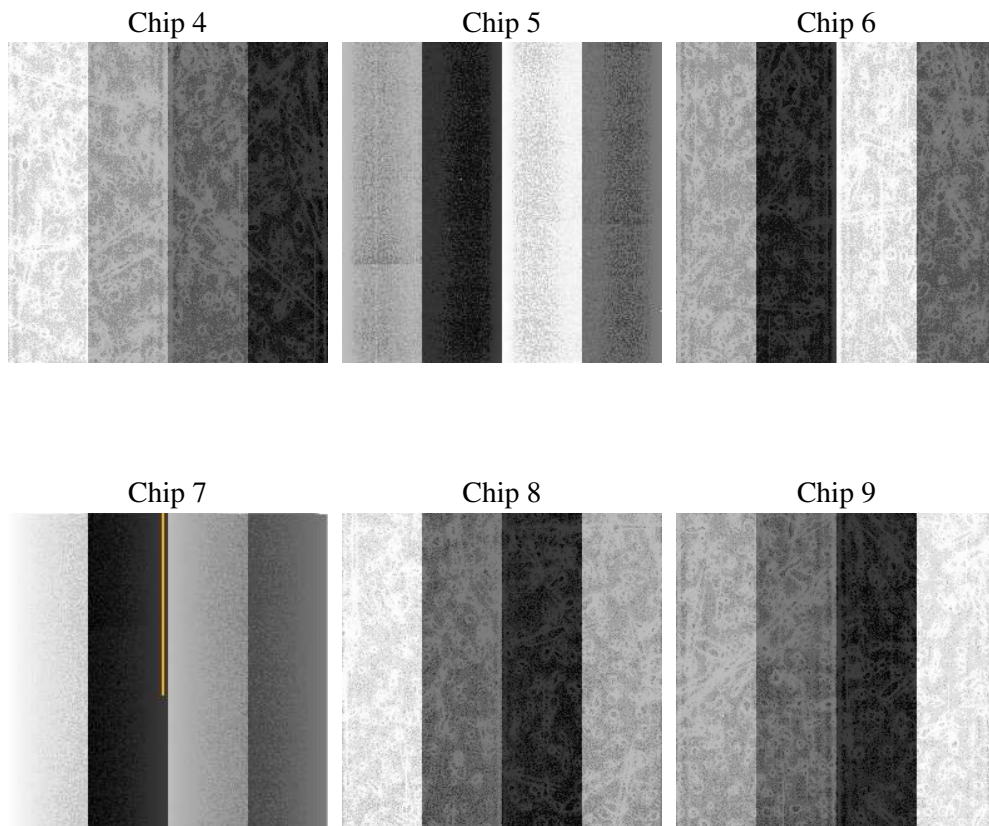
2 OBI

2.1 OBI

2.1.1 Images



2.1.2 Bias



2.1.3 Parameters

obi_num	0
ascdsver	7.6.8.1
caldsver	3.2.3
date	2006-09-09T10:59:50
revision	2

sched_exp_time	43800.000000
ontime	43759.985944033
ontime4	43753.504013538
ontime5	43759.985944033
ontime6	43763.226904288
ontime7	43759.985944033
ontime8	43759.985914096
ontime9	43756.744933918
l1events	1952981

2.1.4 Events

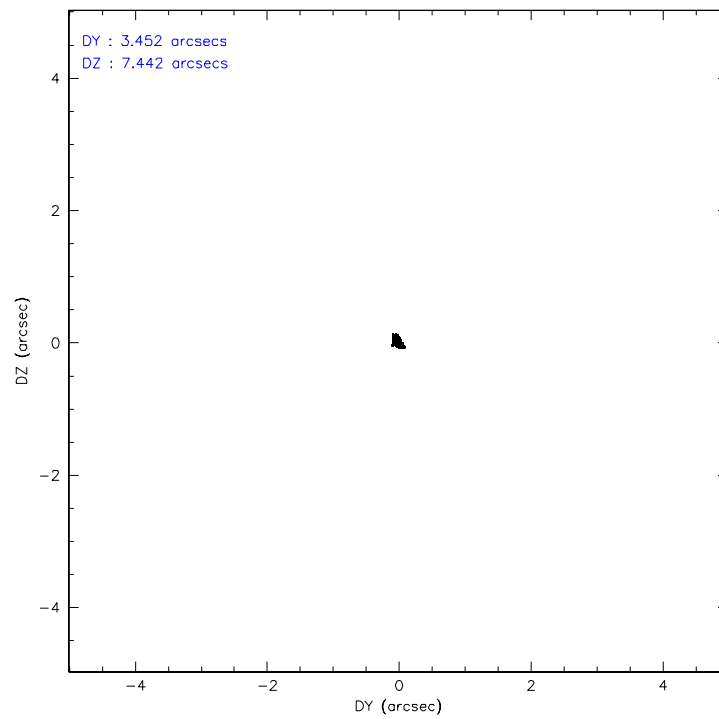
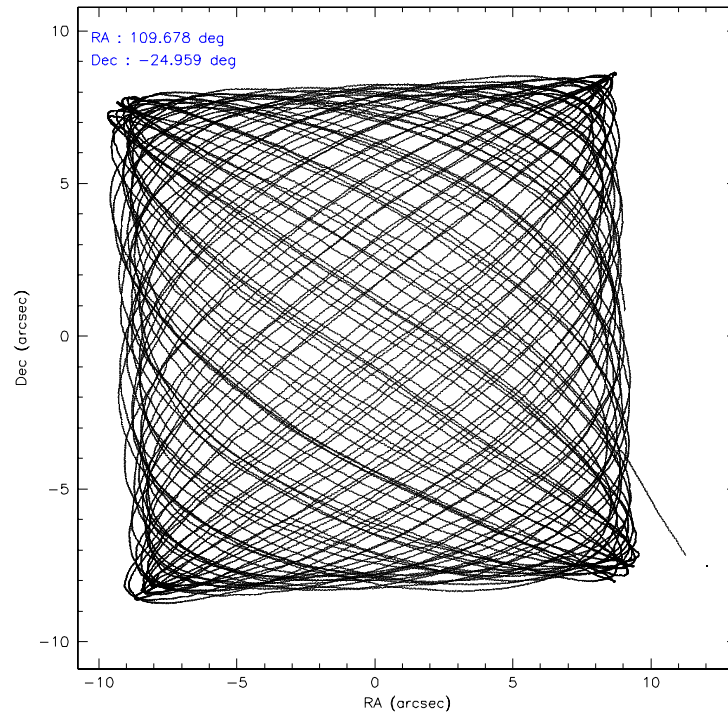
	ccd 4	ccd 5	ccd 6	ccd 7	ccd 8	ccd 9
level 1 events	301513	399841	276708	355260	341732	277927
rejected events	268667	221665	245069	219119	272584	245680
rejected %	89%	55%	88%	61%	79%	88%

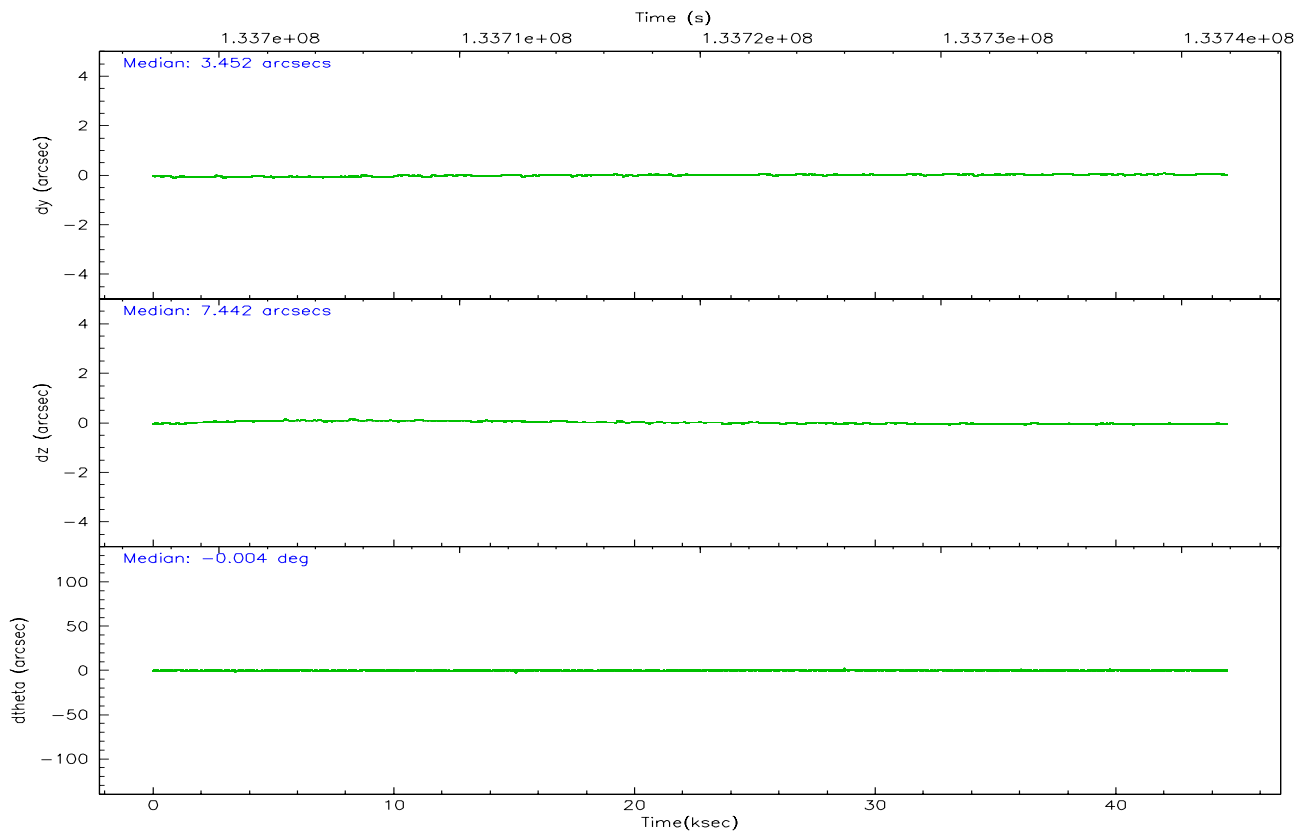
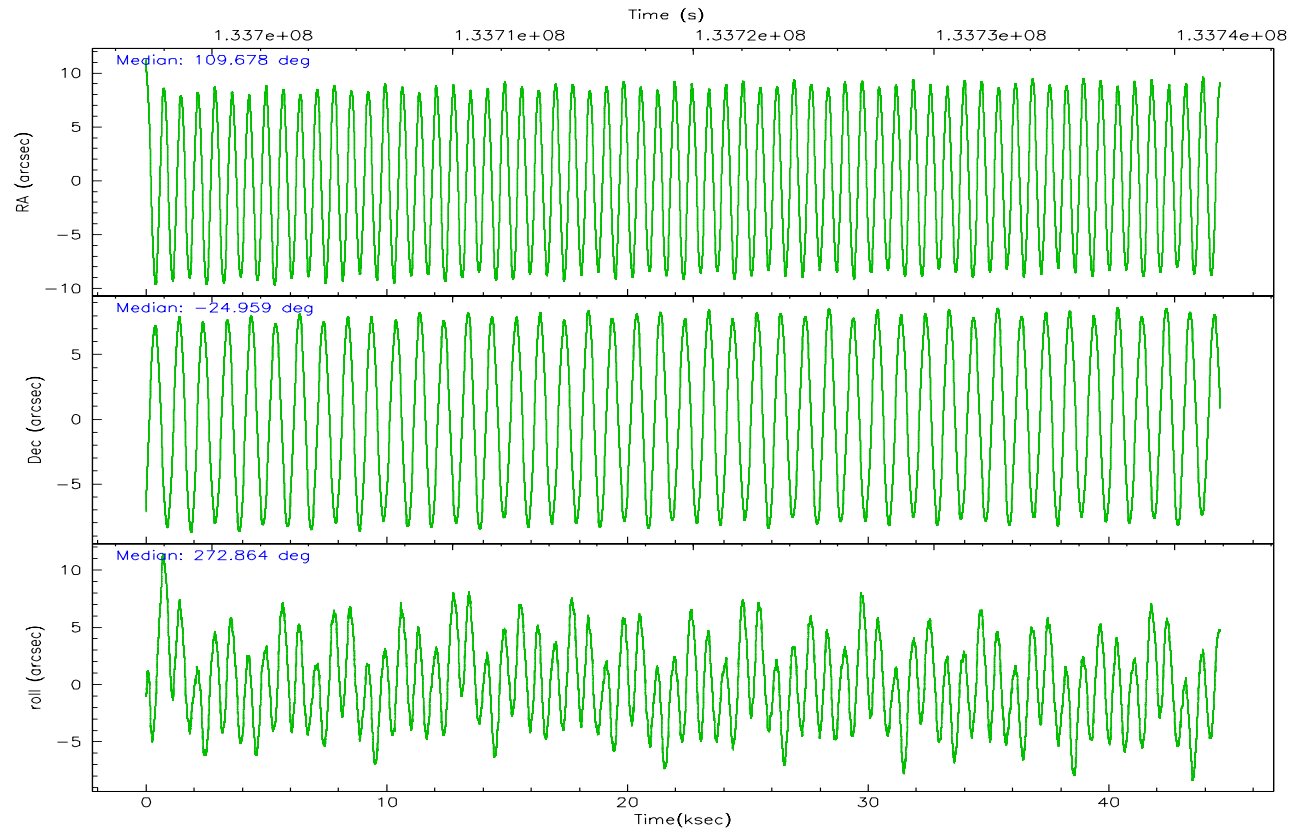
	ccd 4	ccd 5	ccd 6	ccd 7	ccd 8	ccd 9
grade 0 events	12919	17555	12627	7819	21473	12905
	4%	4%	4%	2%	6%	4%
grade 1 events	139	4193	125	218	194	108
	0%	1%	0%	0%	0%	0%
grade 2 events	7970	56907	6411	33631	15136	6592
	2%	14%	2%	9%	4%	2%
grade 3 events	3043	3708	3157	7297	7332	3269
	1%	0%	1%	2%	2%	1%
grade 4 events	2956	3499	3093	7186	6804	3059
	0%	0%	1%	2%	1%	1%
grade 5 events	10144	18466	11932	23956	15057	11987
	3%	4%	4%	6%	4%	4%
grade 6 events	5960	96521	6353	80219	18403	6425
	1%	24%	2%	22%	5%	2%
grade 7 events	258382	198992	233010	194934	257333	233582
	85%	49%	84%	54%	75%	84%

2.2 Compared Parameters

Parameter	Planned	Actual	Parameter	Planned	Actual
Instrument	ACIS	ACIS	Obspar format version number	6	6
Detector	ACIS-456789	ACIS-456789	Obspar file type	PREDICTED	ACTUAL
Grating	HETG	HETG	Obspar update status	NONE	UPDATED
Data mode	FAINT	FAINT	On-chip summing requested	N	N
Observation mode	POINTING	POINTING	Subarray requested	NONE	NONE
Pointing RA	109.661190	109.6778074265915	Alternating exposures requested	N	N
Pointing Dec	-24.936895	-24.95958629637551	Primary exposure time	0.000000	3.2
Pointing Roll	272.704565	272.8681989578564			
SIM focus pos (mm)	-0.684267	-0.6828225247311905			
SIM defocus (mm)	0	0.001444936568705701			
SIM translation stage pos (mm)	-190.132523	-190.1400660498719			
SIM translation stage offset (mm)	0	0.00754346686406393			
Observation start time	133698082.184000	133696798.21319			
Observation start date	2002-03-28T10:20:18	2002-03-28T09:59:58			
Observation end time	133741882.184000	133742843.26505			
Observation end date	2002-03-28T22:30:18	2002-03-28T22:47:23			
Read mode	TIMED	TIMED			

2.3 Aspect



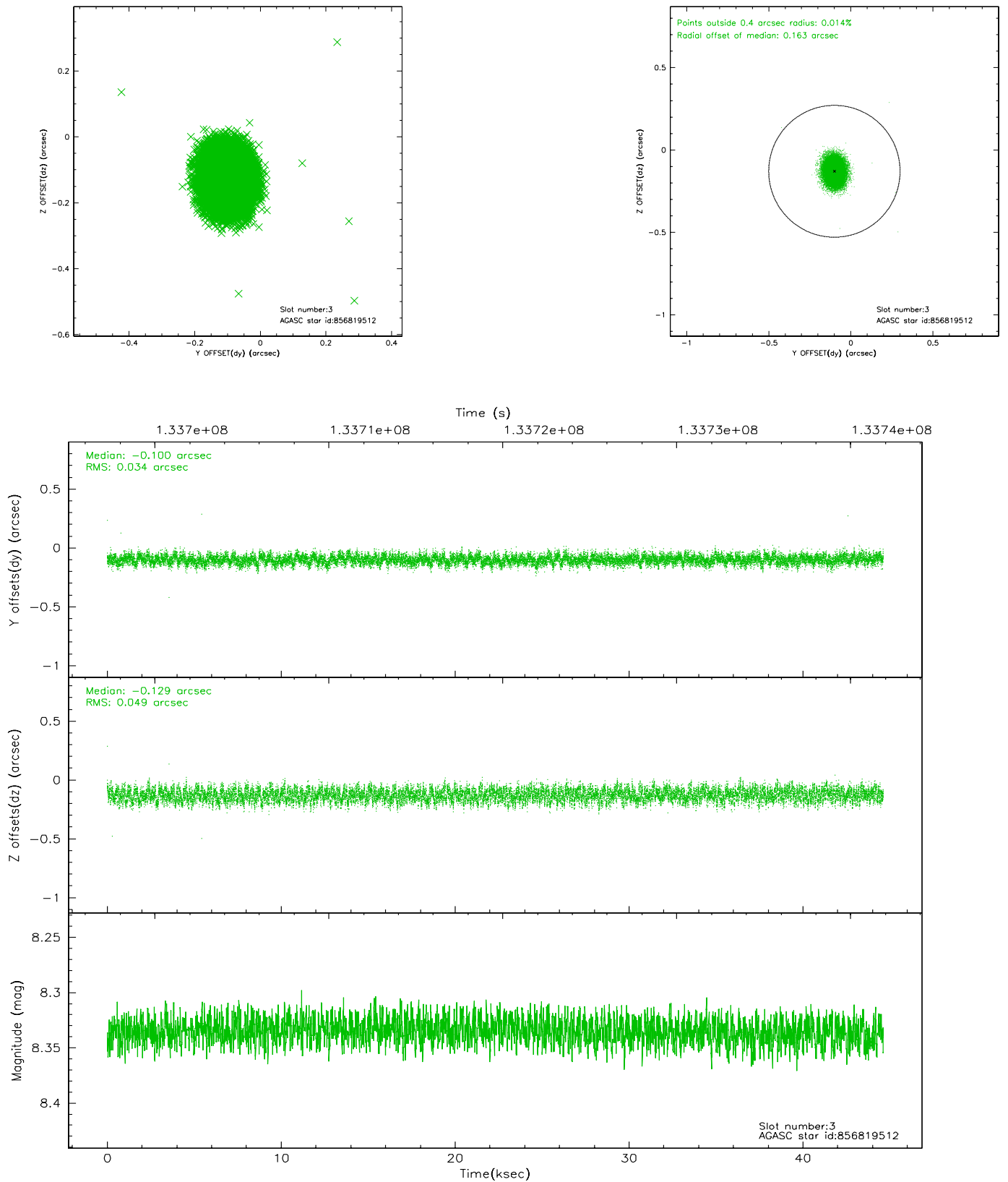


Slot Statistics

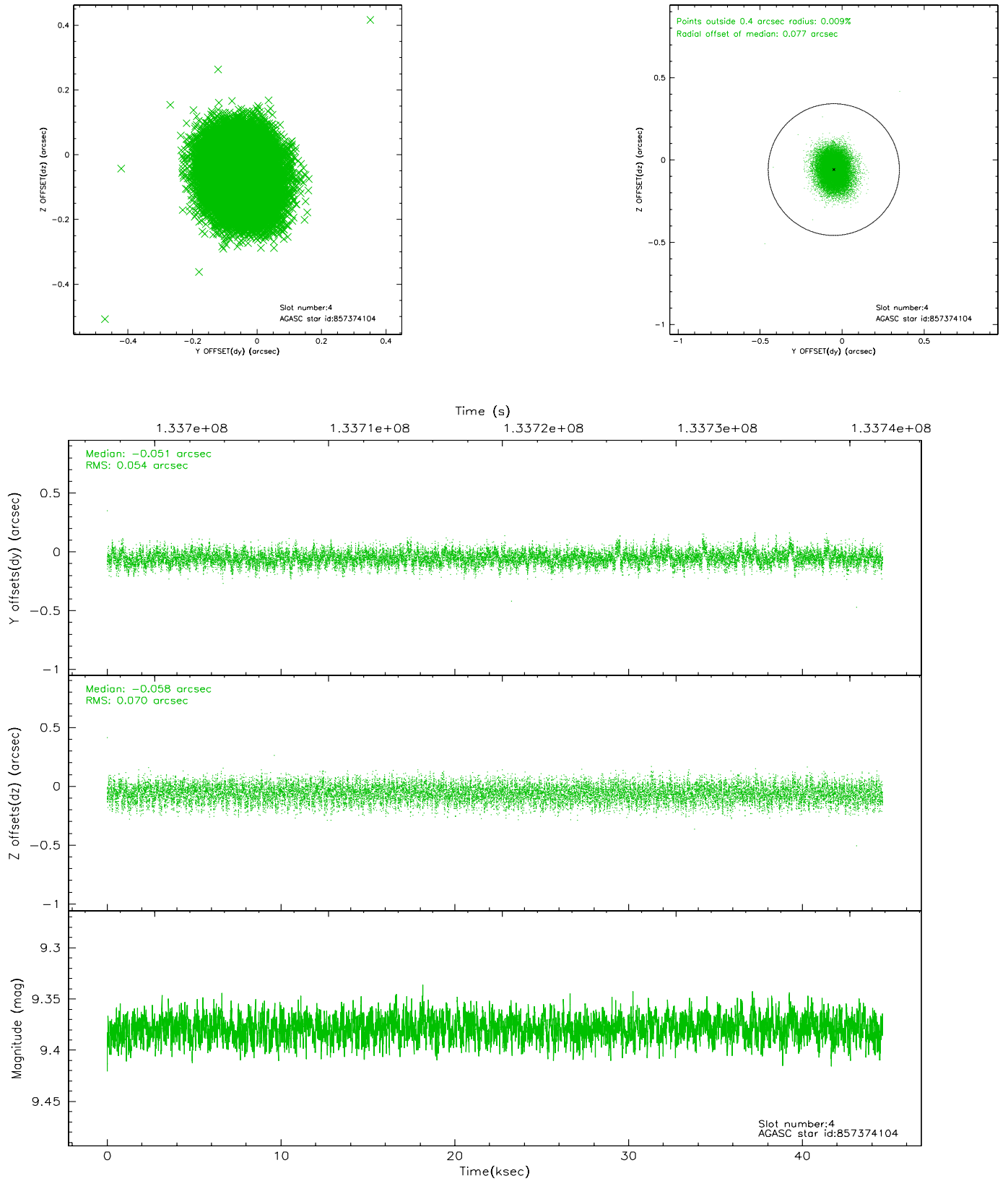
slot	status	id	mag	n_pts	med_dy	med_dz	dr1	dr2	ra	dec	mean_y	mean_z
0	FID	ACIS-S-2	7.12	10885	0.017	0.030	0.006	0.011	0.000000	0.000000	-756.08	-1728.60
1	FID	ACIS-S-4	7.20	10883	-0.039	-0.003	0.006	0.010	0.000000	0.000000	2157.14	179.85
2	FID	ACIS-S-6	7.36	10884	-0.006	-0.019	0.007	0.012	0.000000	0.000000	405.88	817.23
3	GUIDE	856819512	8.33	21764	-0.100	-0.129	0.064	0.101	109.292794	-24.352083	-2158.01	-1107.44
4	GUIDE	857374104	9.38	21758	-0.051	-0.058	0.095	0.151	109.002221	-24.763139	-720.89	-2122.12
5	GUIDE	857351440	9.06	21762	-0.060	0.015	0.074	0.123	109.072756	-25.276289	1134.71	-1970.76
6	GUIDE	857371208	9.32	21761	-0.077	0.157	0.083	0.135	110.071536	-24.829278	-321.44	1357.95
7	GUIDE	857349496	9.65	21747	0.289	0.017	0.100	0.161	109.788555	-25.517382	2107.80	315.49

2.4 Star Slots

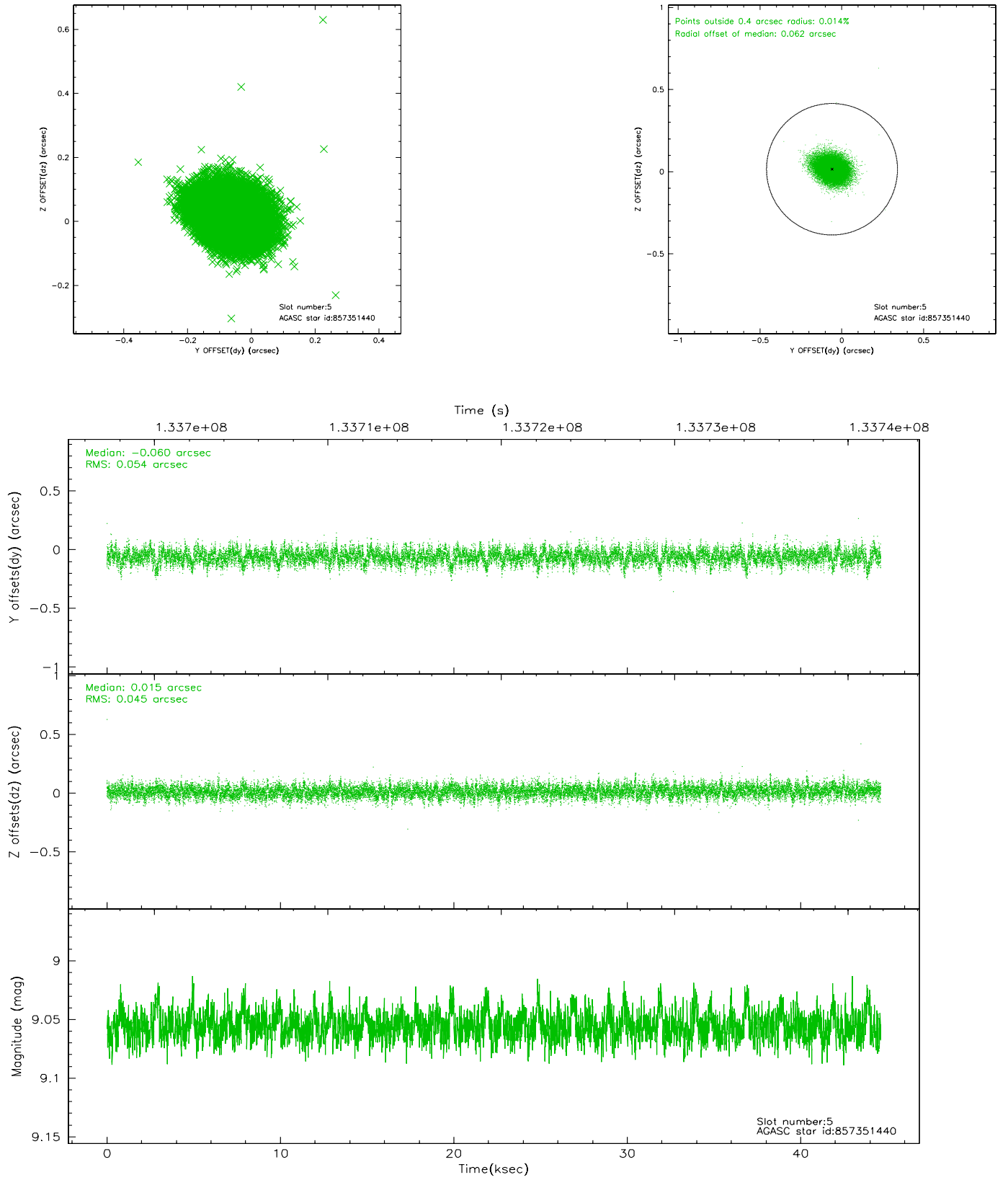
2.4.1 Slot 3



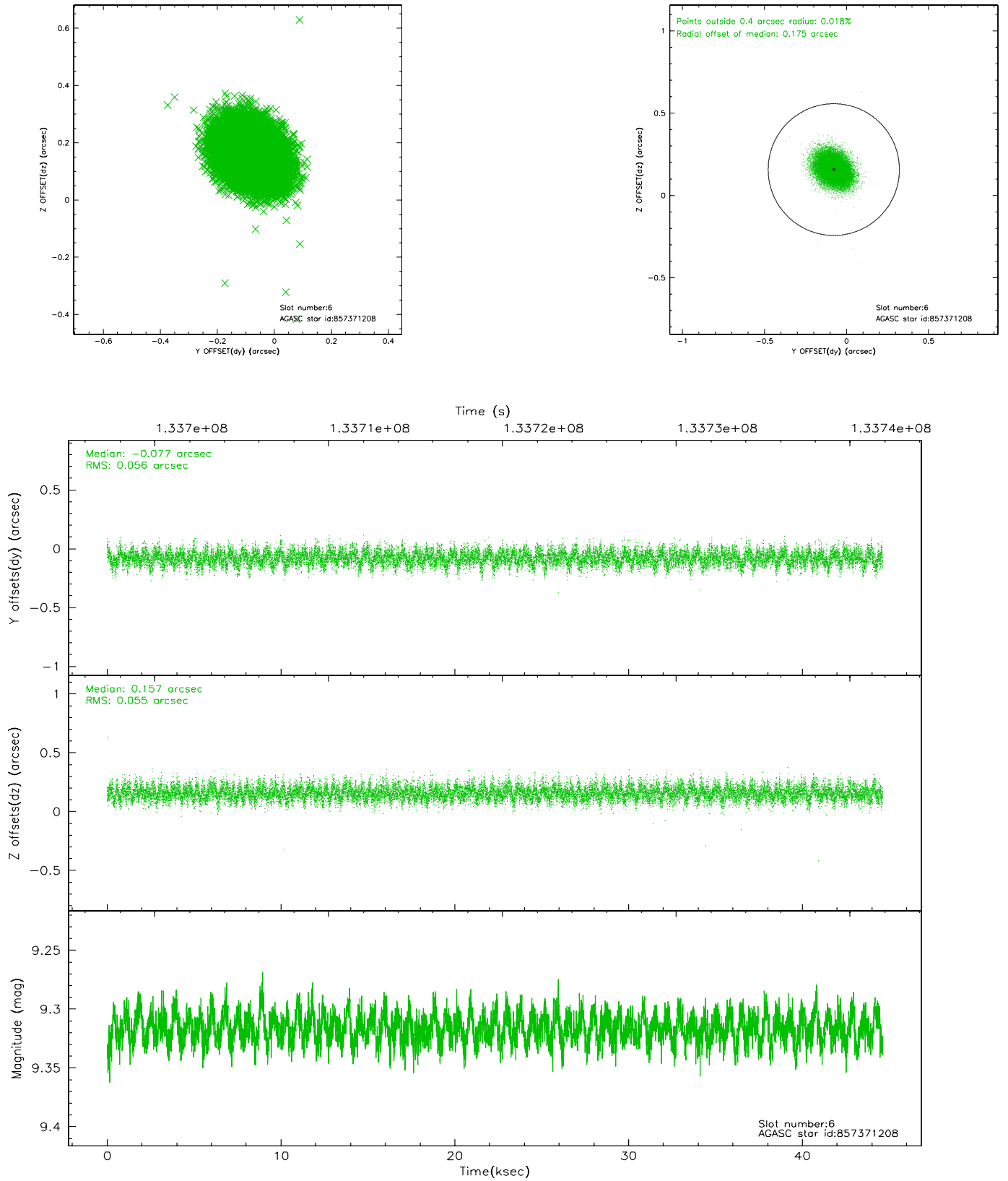
2.4.2 Slot 4



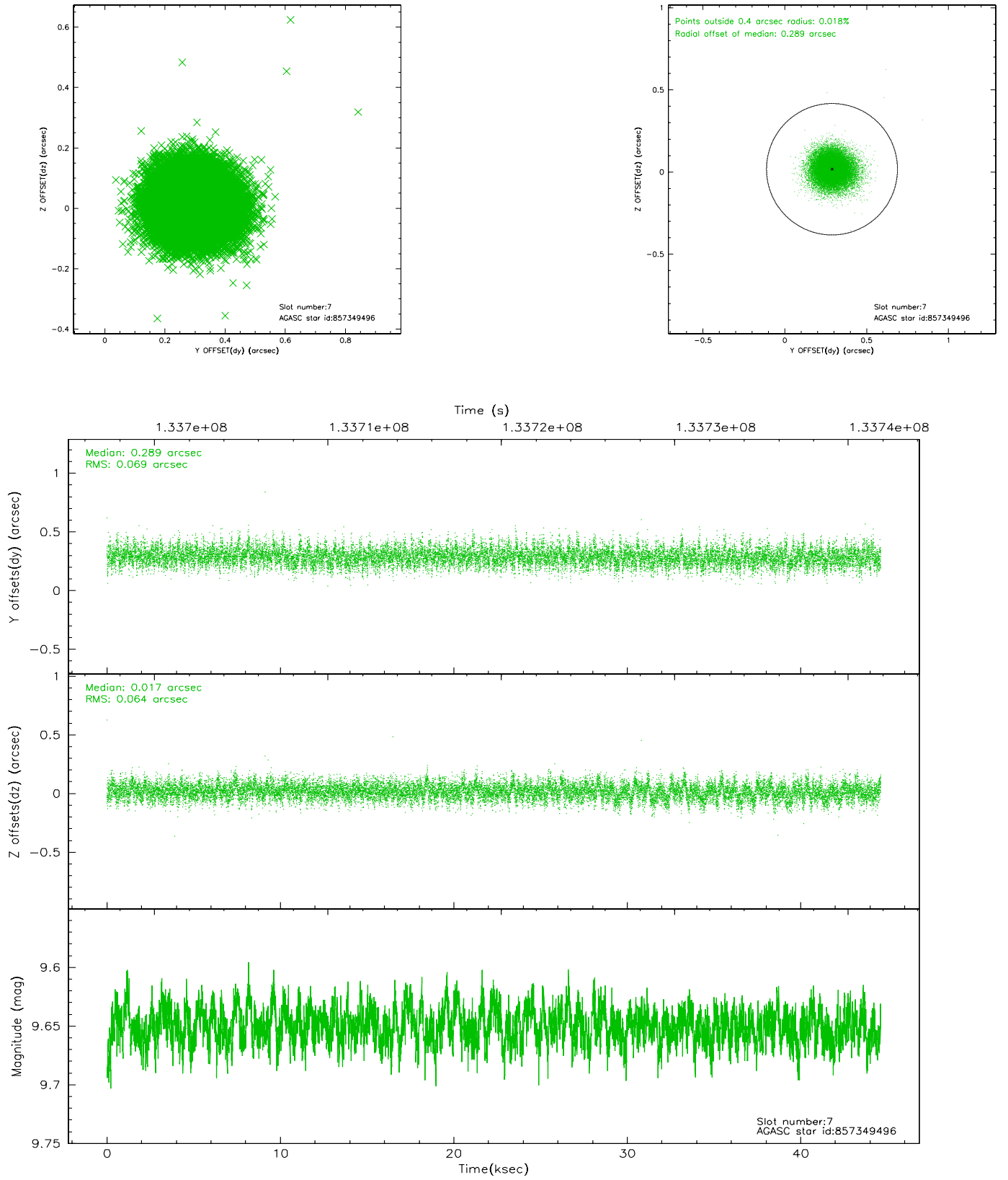
2.4.3 Slot 5



2.4.4 Slot 6

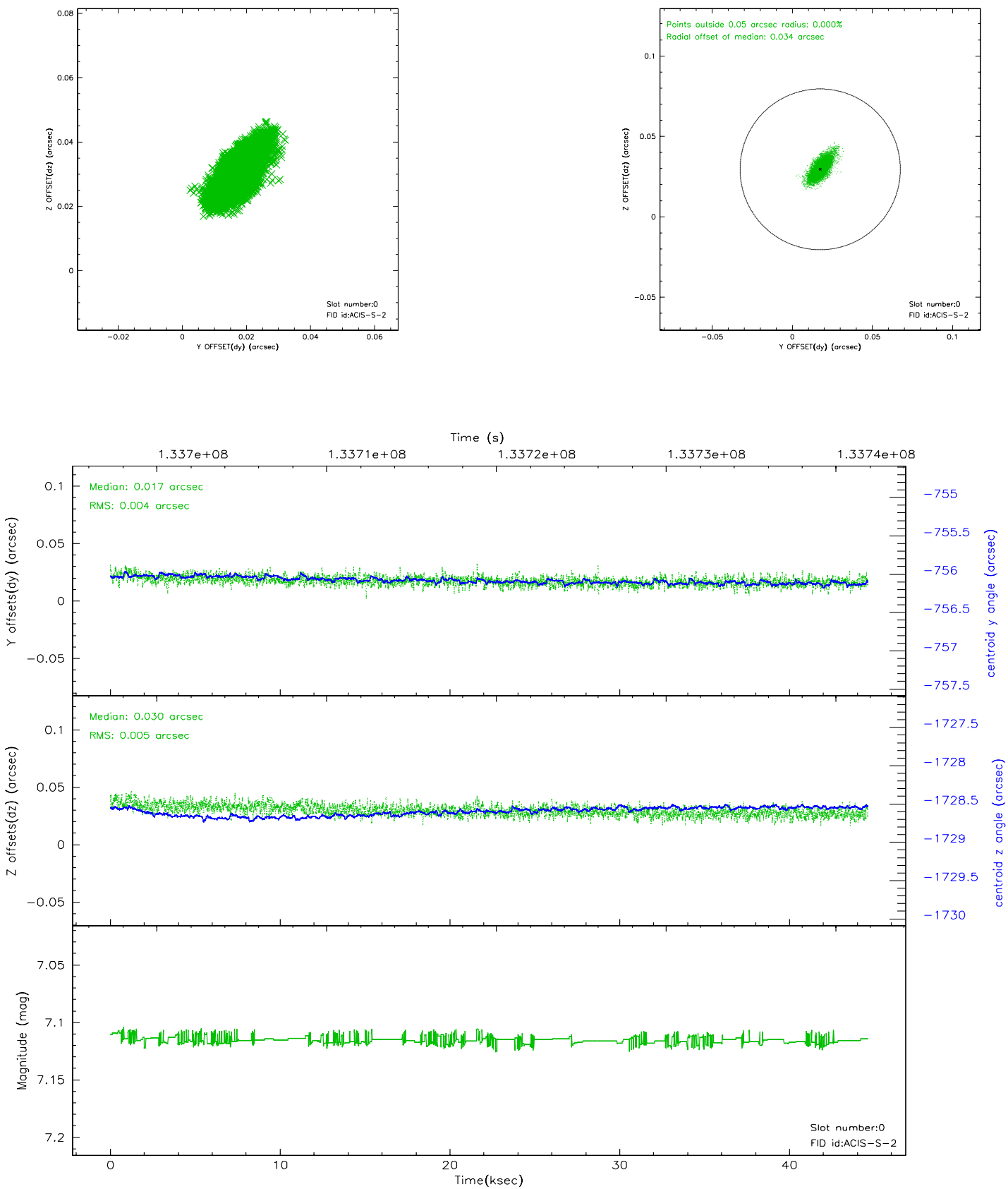


2.4.5 Slot 7

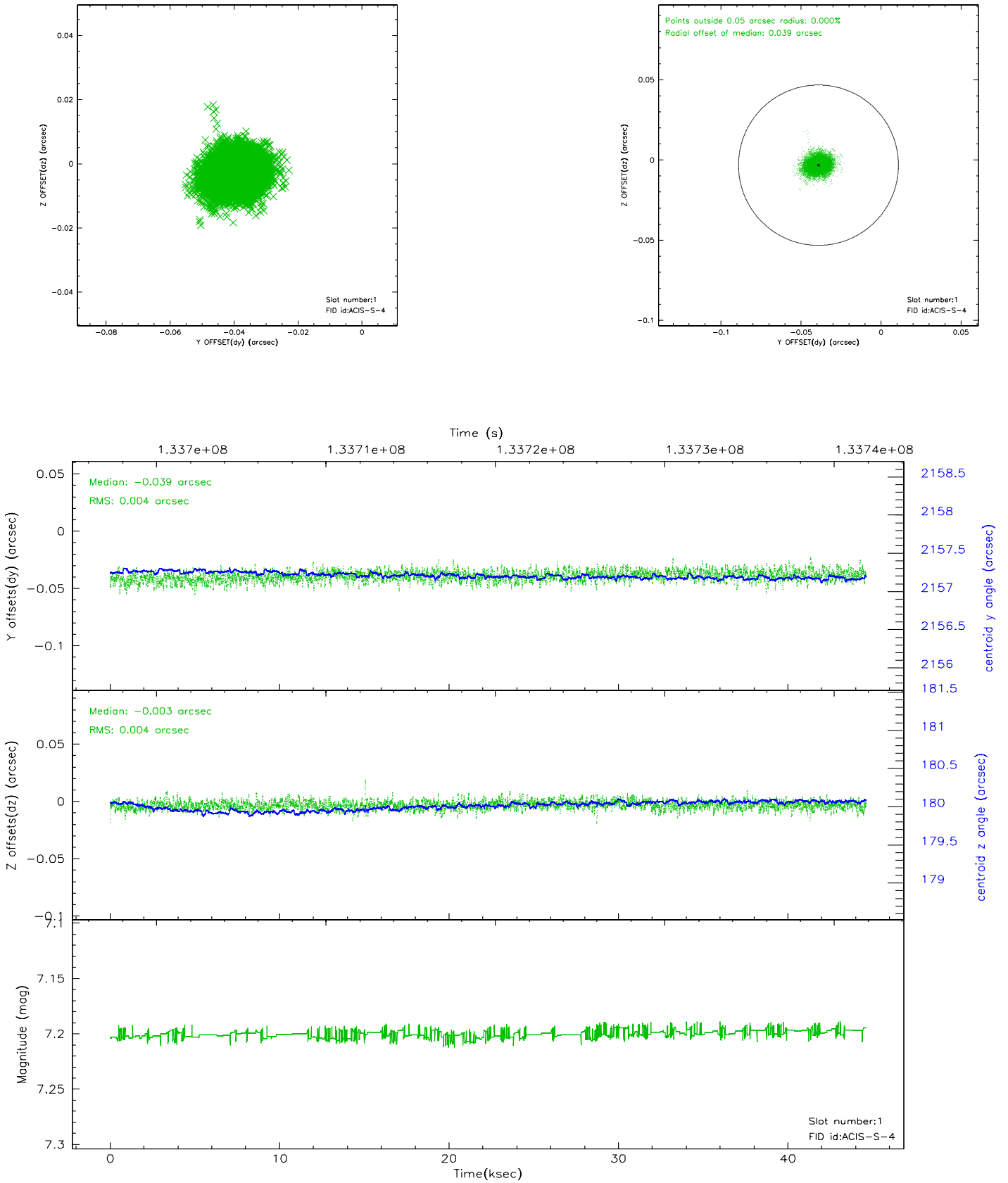


2.5 FID Slots

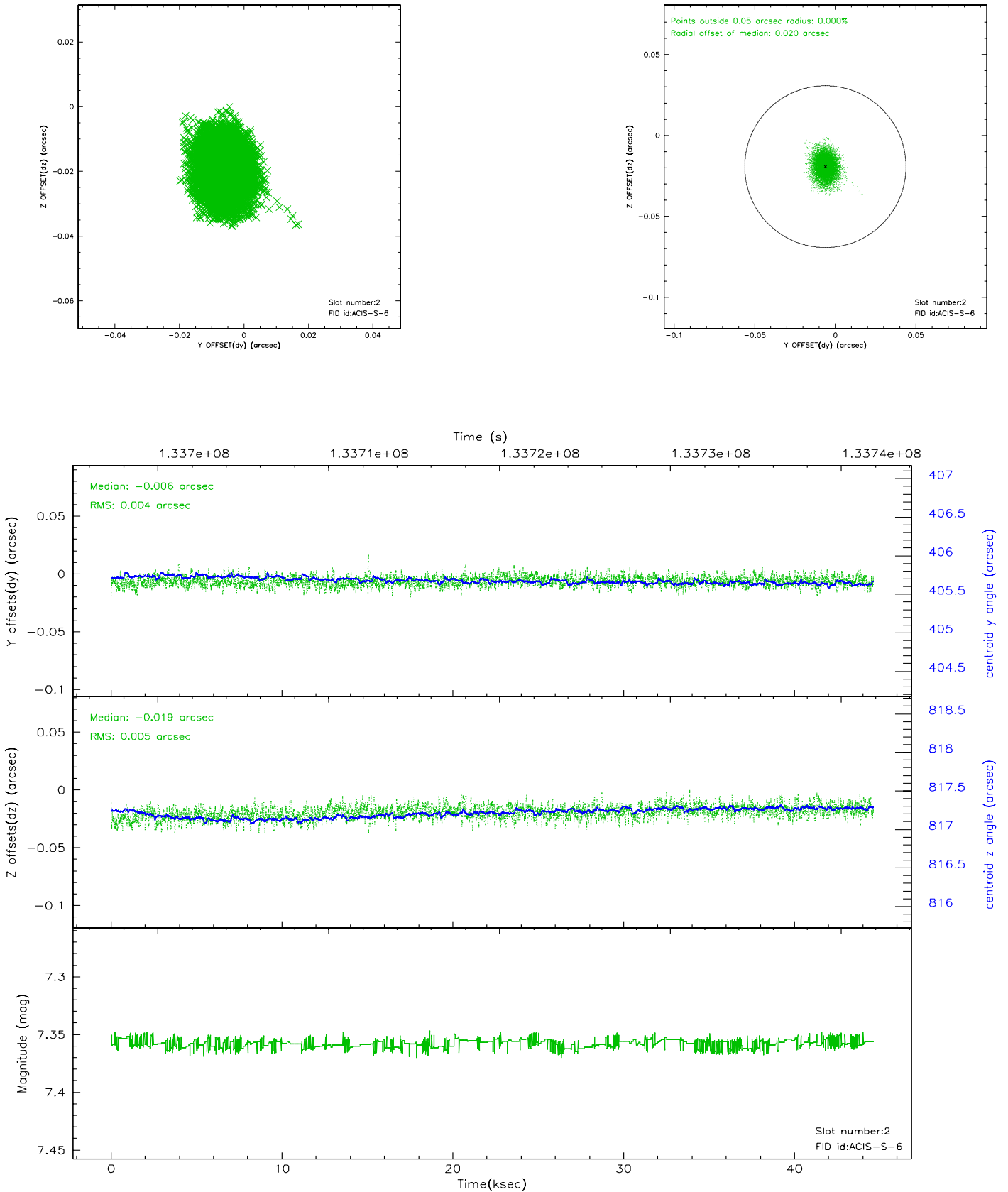
2.5.1 Slot 0



2.5.2 Slot 1



2.5.3 Slot 2

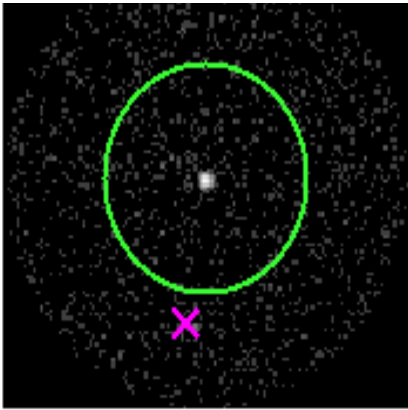


3 Gratings

3.1 HEG Arm



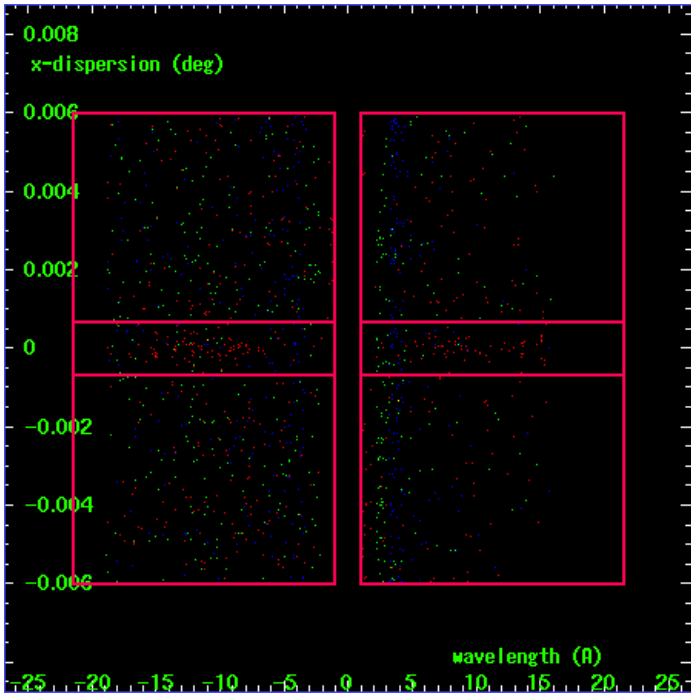
HEG Order Sort 123



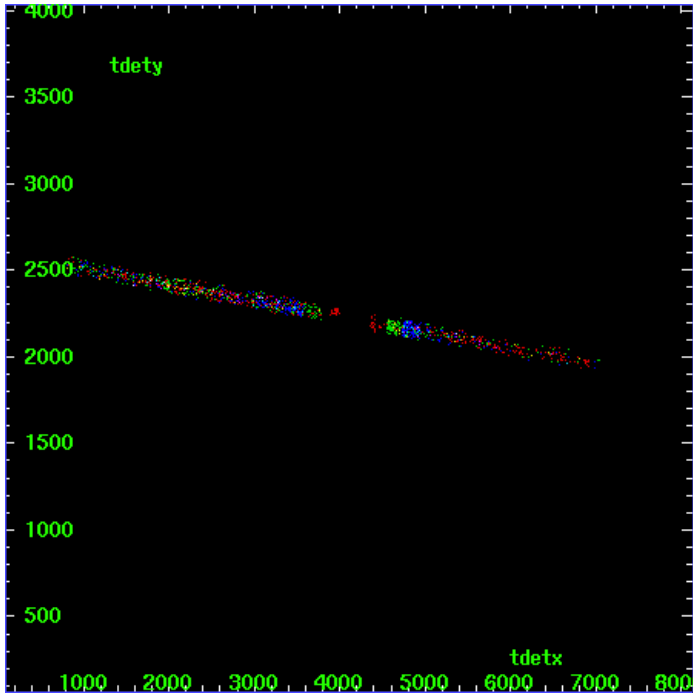
HEG Zero Order



HEG Order Sort ALL

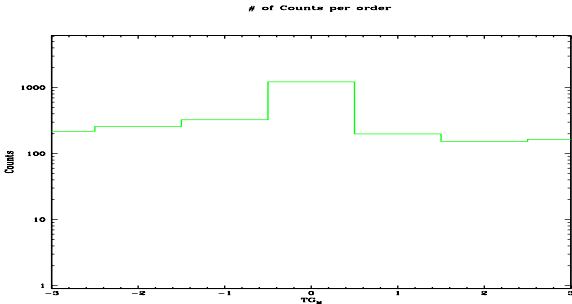


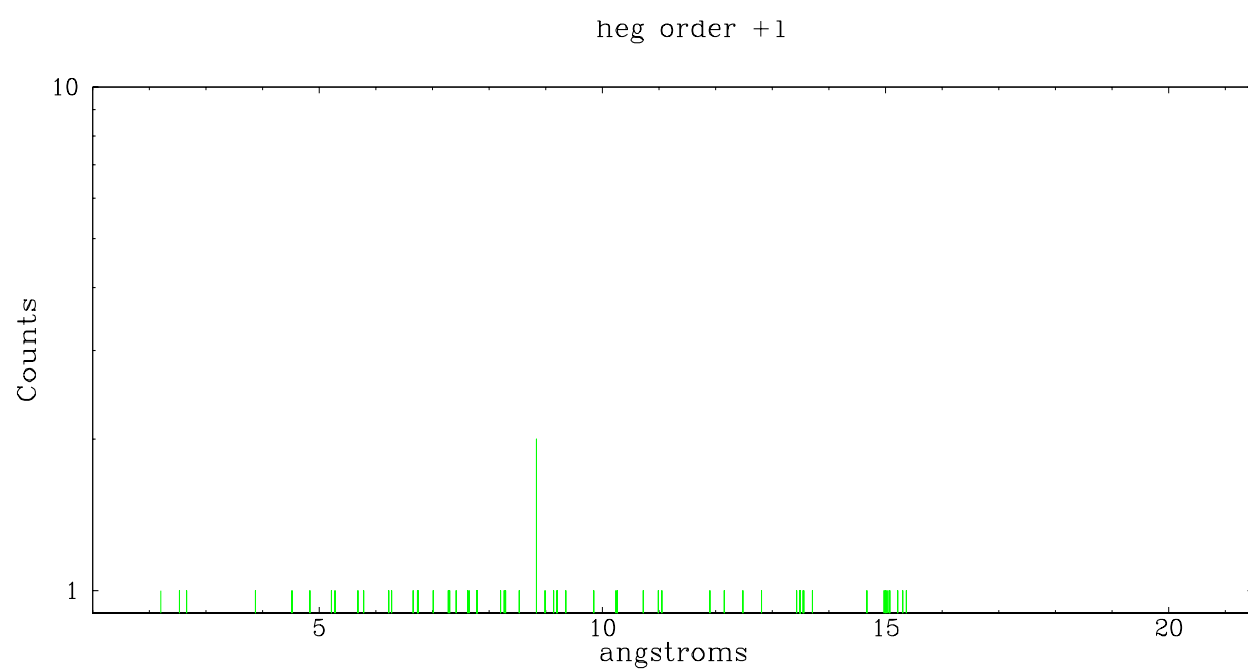
Spot Image HEG



Full Detector HEG

	order -3	order -2	order -1	order 0	order 1	order 2	order 3
Events	217	258	326	1225	199	153	164

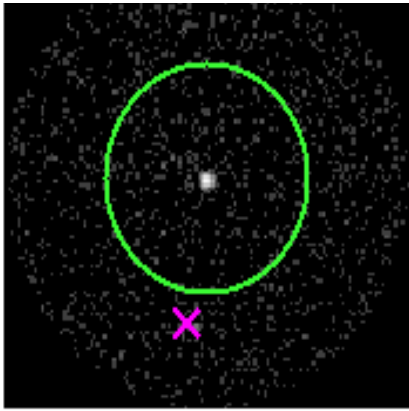




3.2 MEG Arm



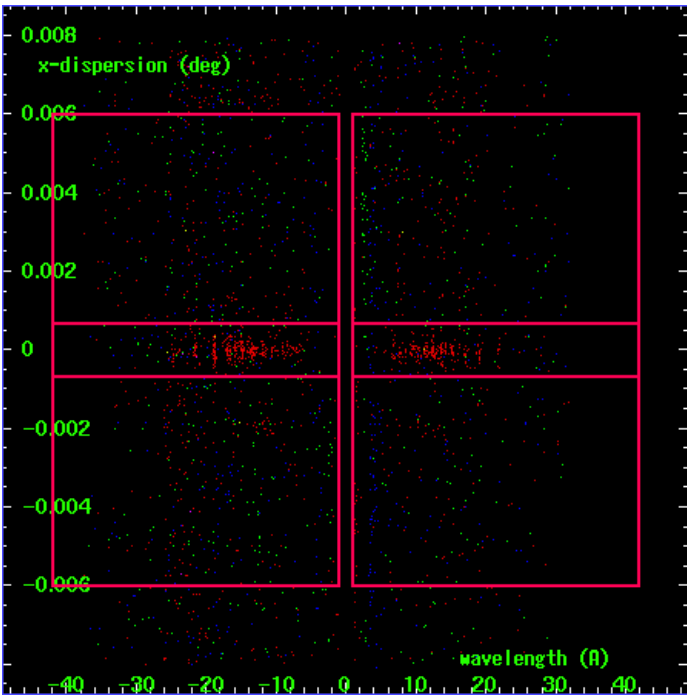
MEG Order Sort 123



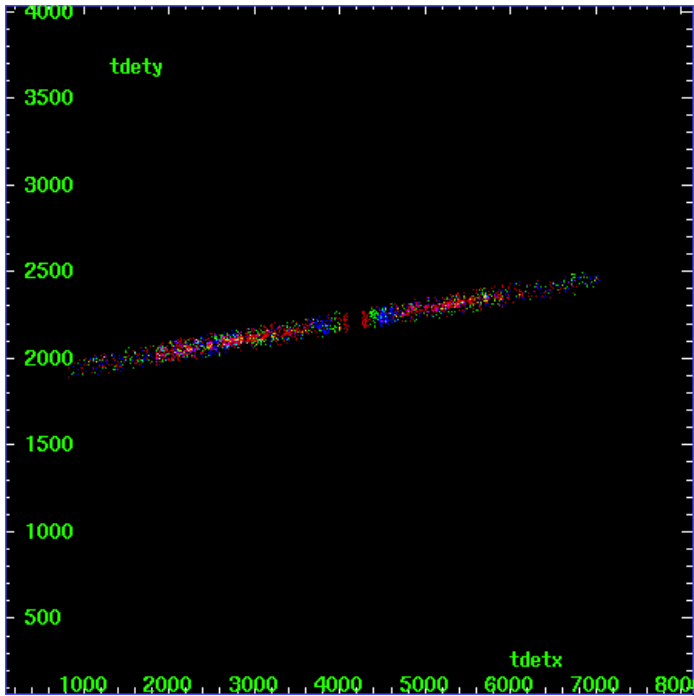
MEG Zero Order



MEG Order Sort ALL

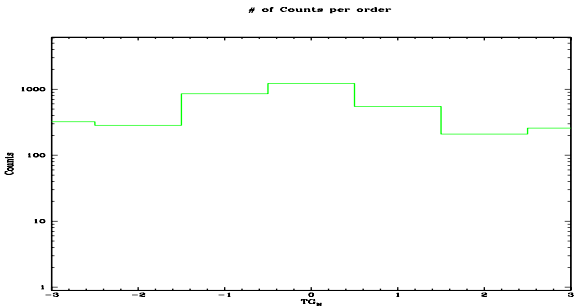


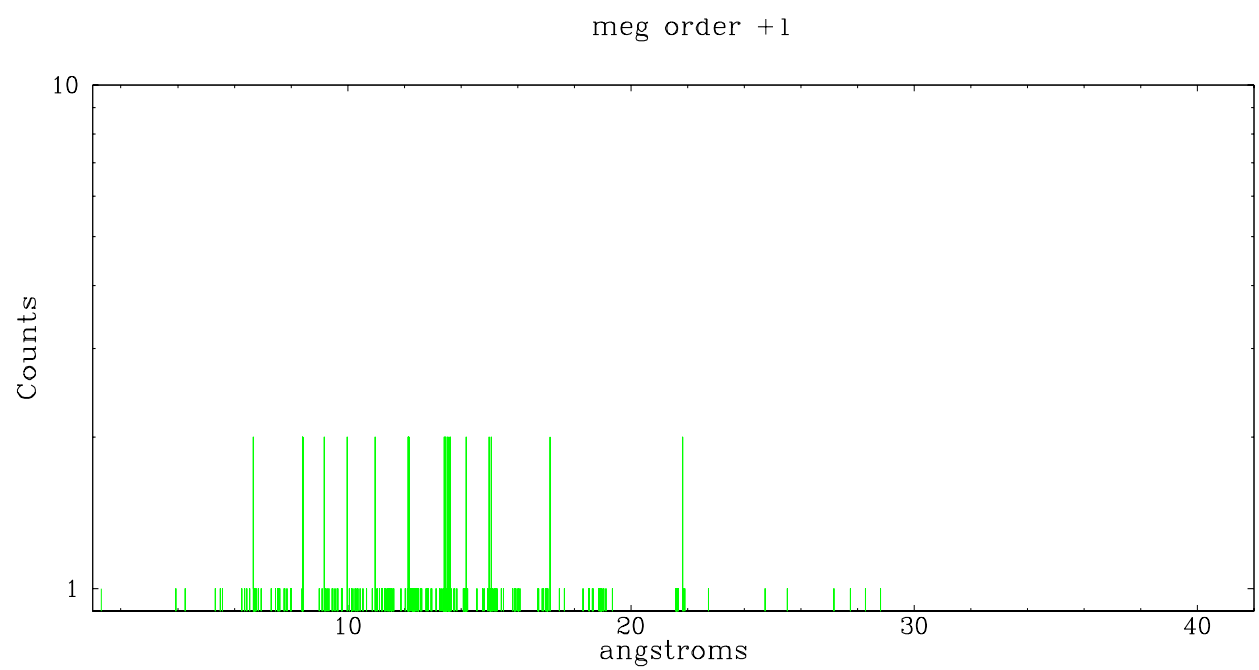
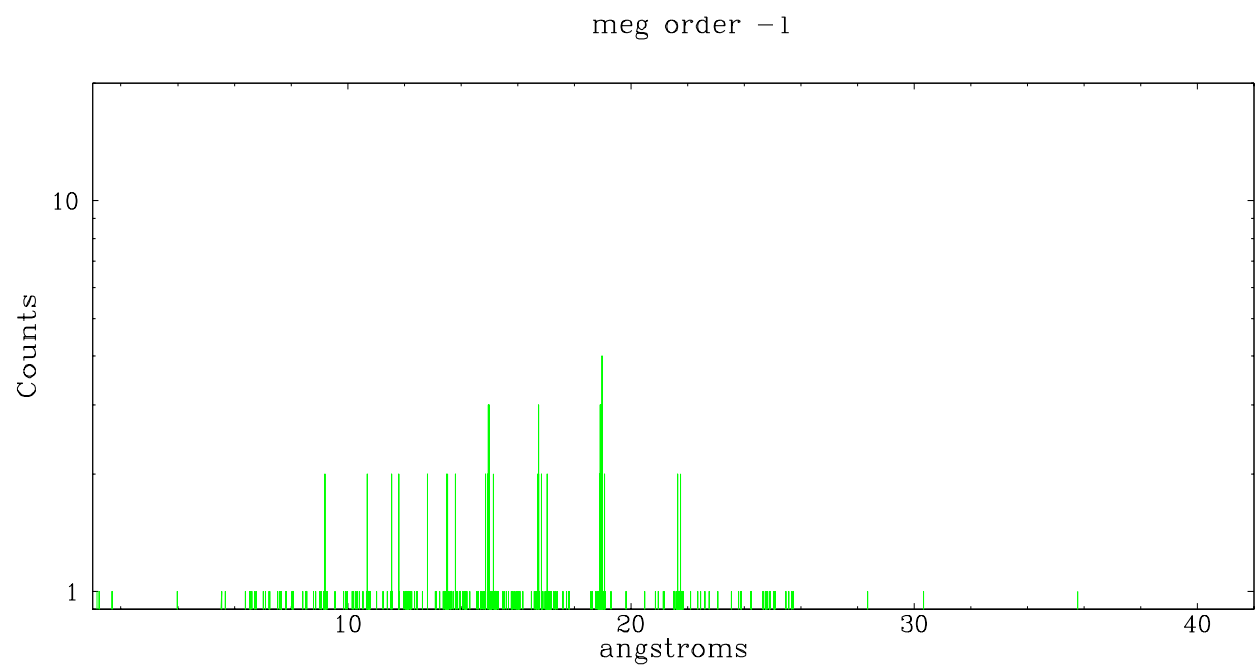
Spot Image MEG



Full Detector MEG

	order -3	order -2	order -1	order 0	order 1	order 2	order 3
Events	322	285	853	1225	547	209	258





A Summary

A.1 Status

V&V Scientist	Jen Lauer
V&V Date (YYYY-MM-DD)	2006.09.10
V&V Edition	1
V&V Disposition and Status	OK
V&V Charge Time	43.756

A.2 Comments