

V&V Reference Report

L2 ASCDS Version : 7.6.9

Observation 2524 - L2 Version 001
Chandra X-Ray Center

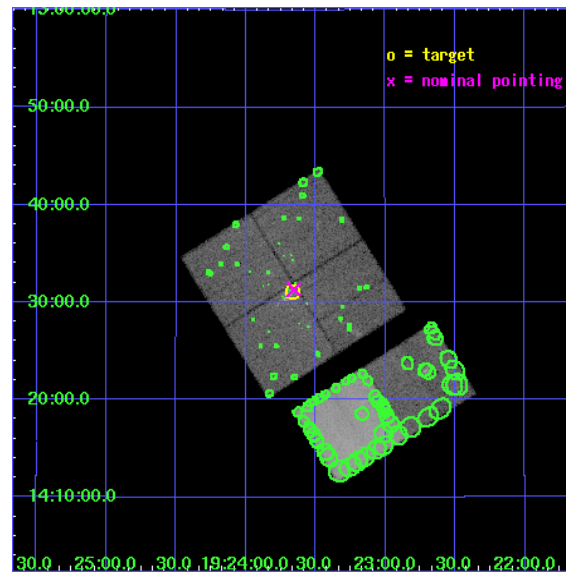
L2 Processing Date : Sep 19 2006

Contents

1	Front	2
2	OBI	3
2.1	OBI	3
2.1.1	Images	3
2.1.2	Bias	3
2.1.3	Parameters	4
2.1.4	Events	4
2.2	Compared Parameters	5
2.3	Aspect	6
2.4	Star Slots	9
2.4.1	Slot 3	9
2.4.2	Slot 4	10
2.4.3	Slot 5	11
2.4.4	Slot 6	12
2.4.5	Slot 7	13
2.5	FID Slots	14
2.5.1	Slot 0	14
2.5.2	Slot 1	15
2.5.3	Slot 2	16
3	Point Sources	17
A	Summary	18
A.1	Status	18
A.2	Comments	18

1 Front

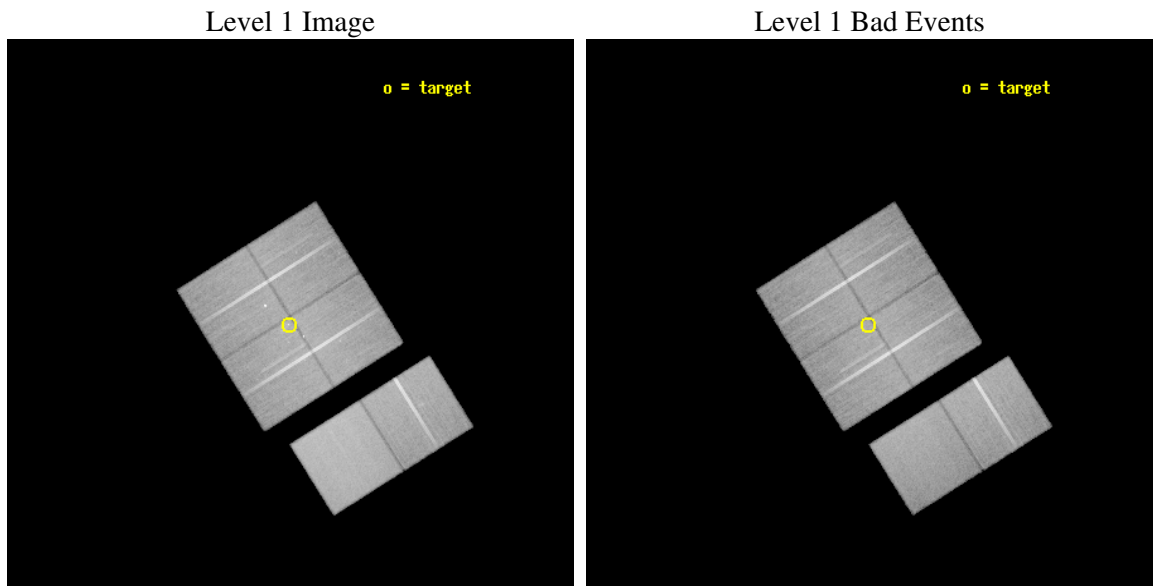
seq_num	200132
obs_id	2524
title	VIOLENT MASSIVE STAR FORMATION IN THE GALAXY: W51 ALTERNATE TARGET
observer	Professor Gordon Garmire
object	W51
dtcycle	0
cycle	P
ra_targ	290.916667
dec_targ	14.518333
ra_nom	290.91390994028
dec_nom	14.522160244579
roll_nom	147.83637777084
revision	2
ontime	54083.199798524
livetime	53398.365757682
ontime0	54079.9588283
ontime1	54083.199798524
ontime2	54079.958818257
ontime3	54083.199798524
ontime6	54079.958818287
ontime7	54083.199798524
l2events	367472



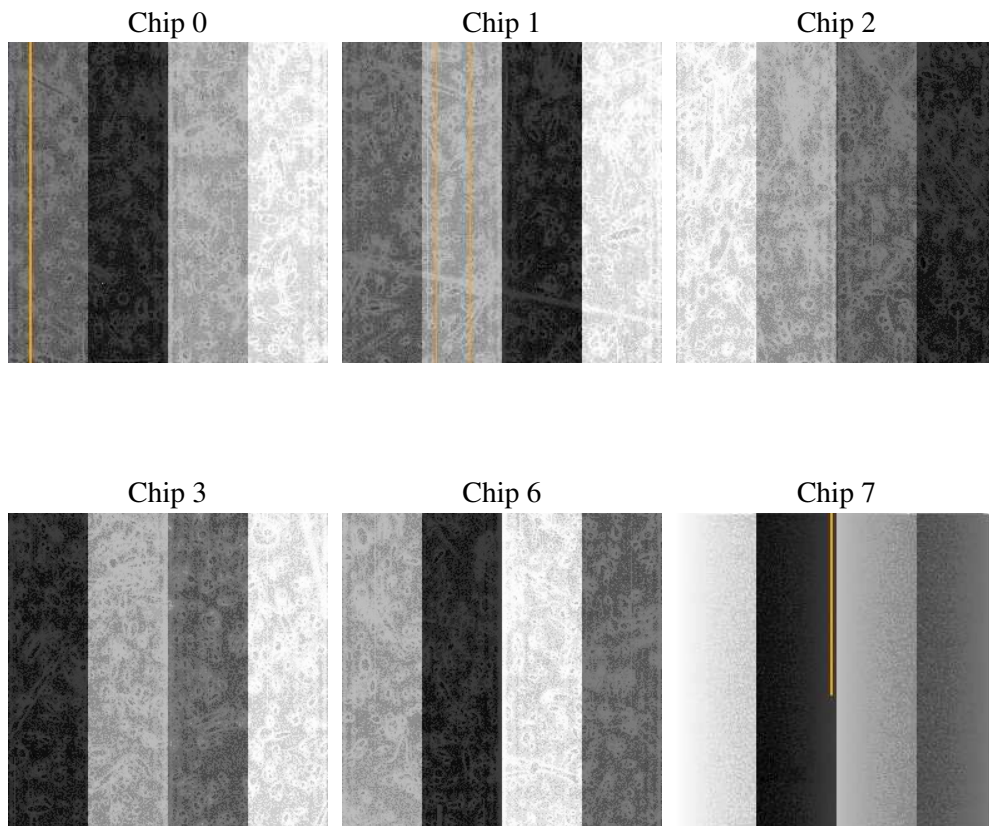
2 OBI

2.1 OBI

2.1.1 Images



2.1.2 Bias



2.1.3 Parameters

obi_num	0
ascdsver	7.6.9
caldsver	3.2.3
date	2006-09-19T18:22:37
revision	2

sched_exp_time	54118.142000
ontime	54085.930733562
ontime0	54082.689763337
ontime1	54085.930733562
ontime2	54082.689753294
ontime3	54085.930733562
ontime6	54082.689753324
ontime7	54085.930733562
l1events	2162836

2.1.4 Events

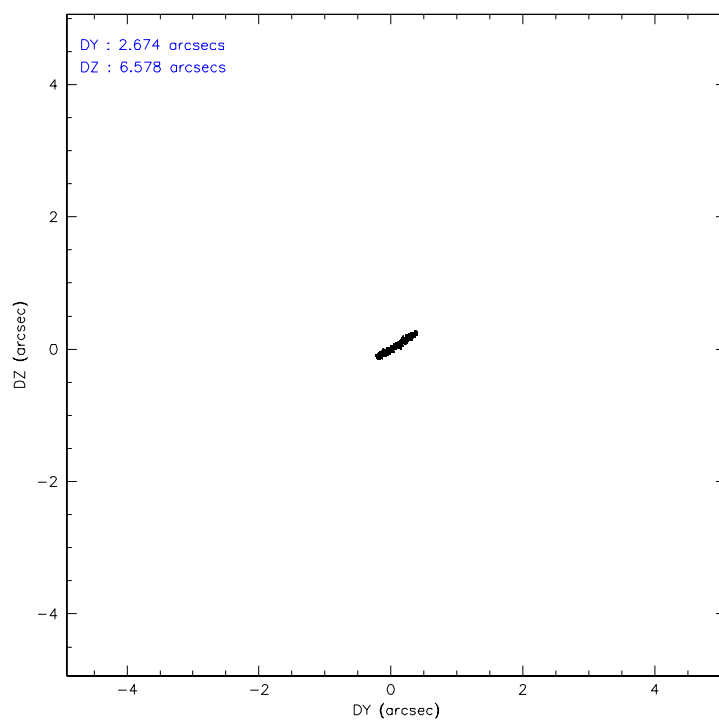
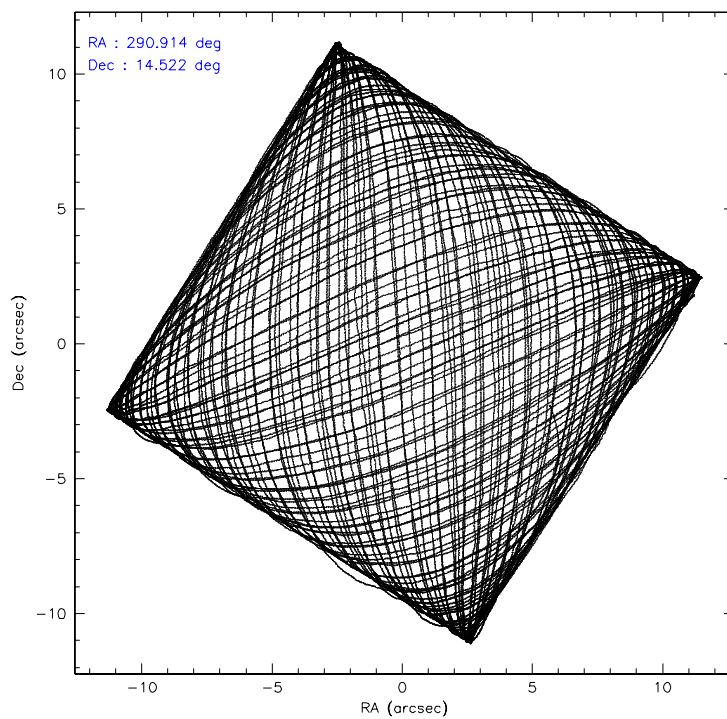
	ccd 0	ccd 1	ccd 2	ccd 3	ccd 6	ccd 7
level 1 events	315176	325180	347639	349983	363638	461220
rejected events	272456	278599	304666	304950	320291	280833
rejected %	86%	85%	87%	87%	88%	60%

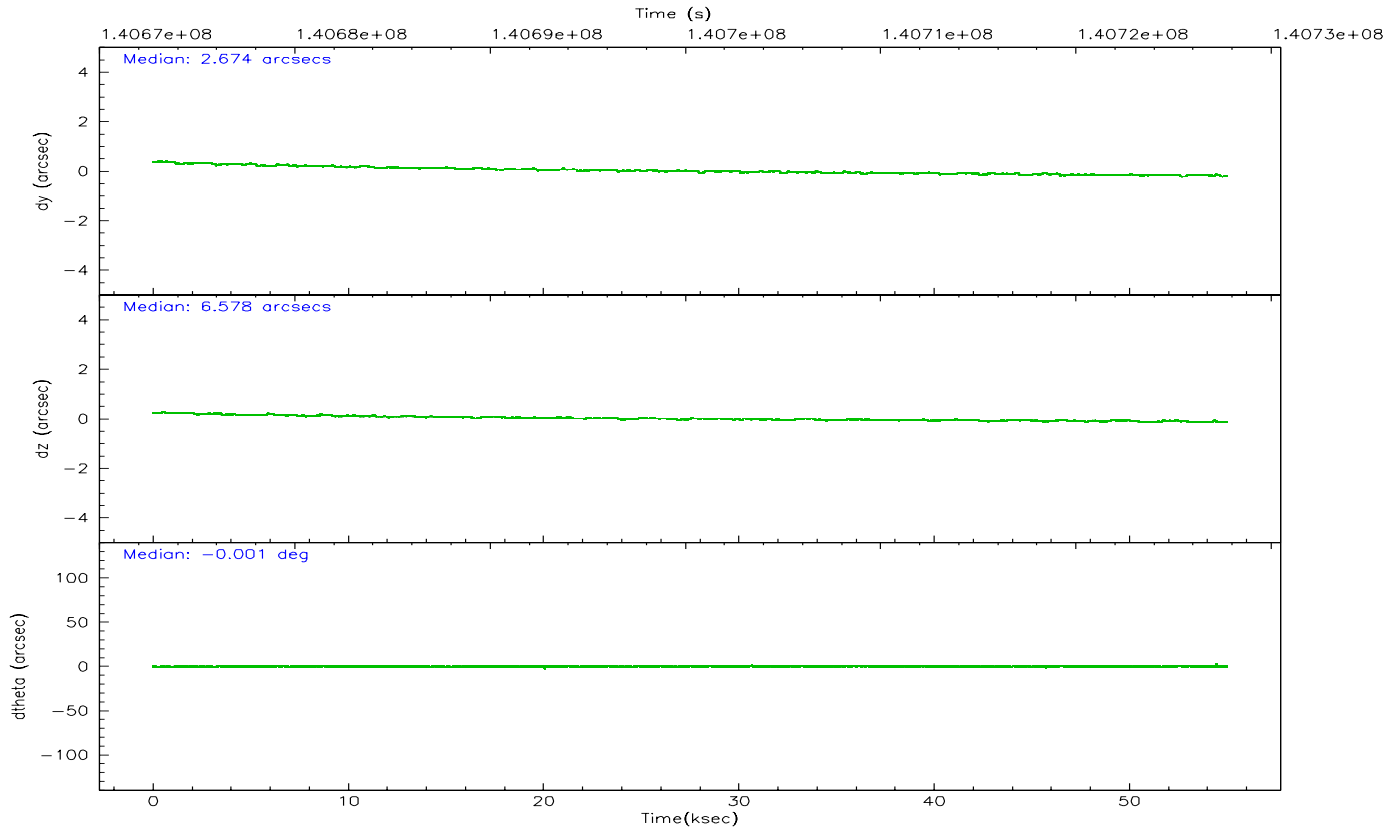
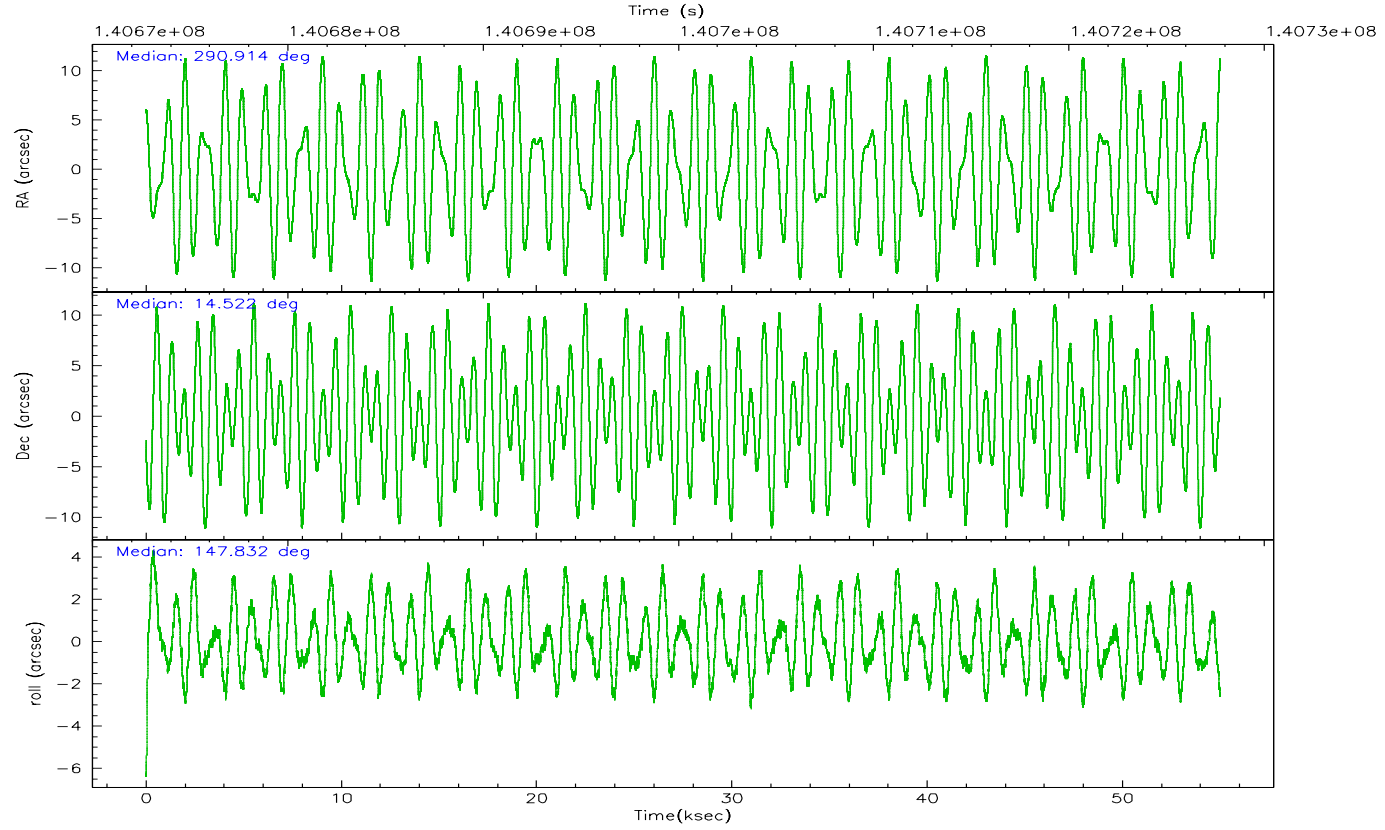
	ccd 0	ccd 1	ccd 2	ccd 3	ccd 6	ccd 7
grade 0 events	18527	20268	19262	20623	18147	11981
	5%	6%	5%	5%	4%	2%
grade 1 events	159	178	163	181	174	289
	0%	0%	0%	0%	0%	0%
grade 2 events	8904	9238	8923	8764	8787	44879
	2%	2%	2%	2%	2%	9%
grade 3 events	4210	4413	3851	3952	4052	9901
	1%	1%	1%	1%	1%	2%
grade 4 events	3737	4442	3793	4094	4020	9810
	1%	1%	1%	1%	1%	2%
grade 5 events	12882	14035	12276	14041	15573	30942
	4%	4%	3%	4%	4%	6%
grade 6 events	7345	8222	7148	7602	8343	103825
	2%	2%	2%	2%	2%	22%
grade 7 events	259412	264384	292223	290726	304542	249593
	82%	81%	84%	83%	83%	54%

2.2 Compared Parameters

Parameter	Planned	Actual	Parameter	Planned	Actual
Instrument	ACIS	ACIS	Obspar format version number	6	6
Detector	ACIS-012367	ACIS-012367	Obspar file type	PREDICTED	ACTUAL
Grating	NONE	NONE	Obspar update status	NONE	UPDATED
Data mode	FAINT	FAINT	Number of optional ACIS chips dropped	0	0
Observation mode	POINTING	POINTING	On-chip summing requested	N	N
Pointing RA	290.942199	290.9139099402765	Subarray requested	NONE	NONE
Pointing Dec	14.521210	14.522160244579	Alternating exposures requested	N	N
Pointing Roll	147.620592	147.8363777708392	Primary exposure time	0.000000	3.2
SIM focus pos (mm)	-0.782348	-0.7809083437167272			
SIM defocus (mm)	0	0.001439871863259334			
SIM translation stage pos (mm)	-233.592463	-233.5874344608287			
SIM translation stage offset (mm)	0	-0.005018542100998502			
Observation start time	140673625.184000	140672309.92245			
Observation start date	2002-06-17T03:59:21	2002-06-17T03:38:29			
Observation end time	140727743.184000	140728057.62473			
Observation end date	2002-06-17T19:01:19	2002-06-17T19:07:37			
Read mode	TIMED	TIMED			

2.3 Aspect



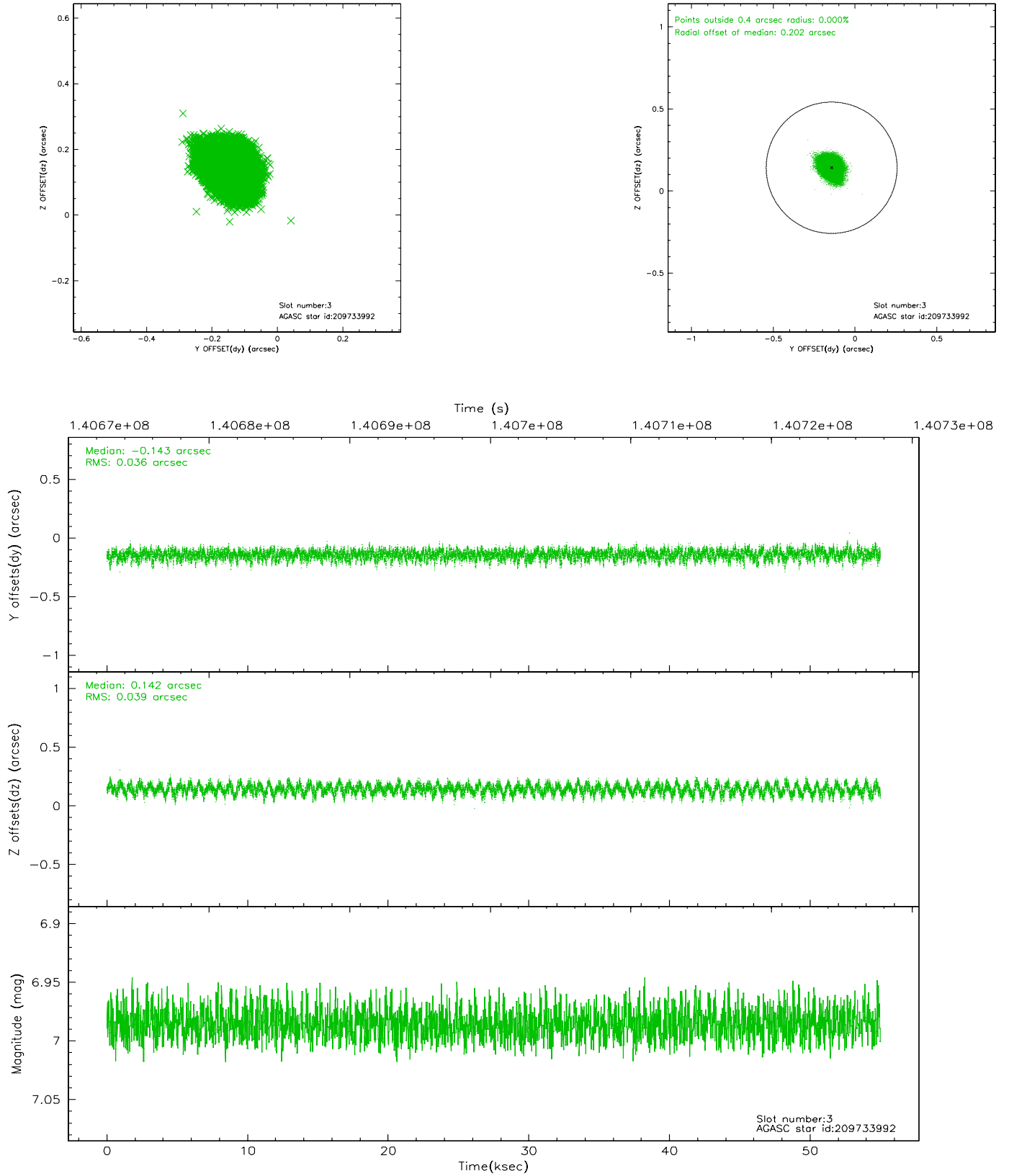


Slot Statistics

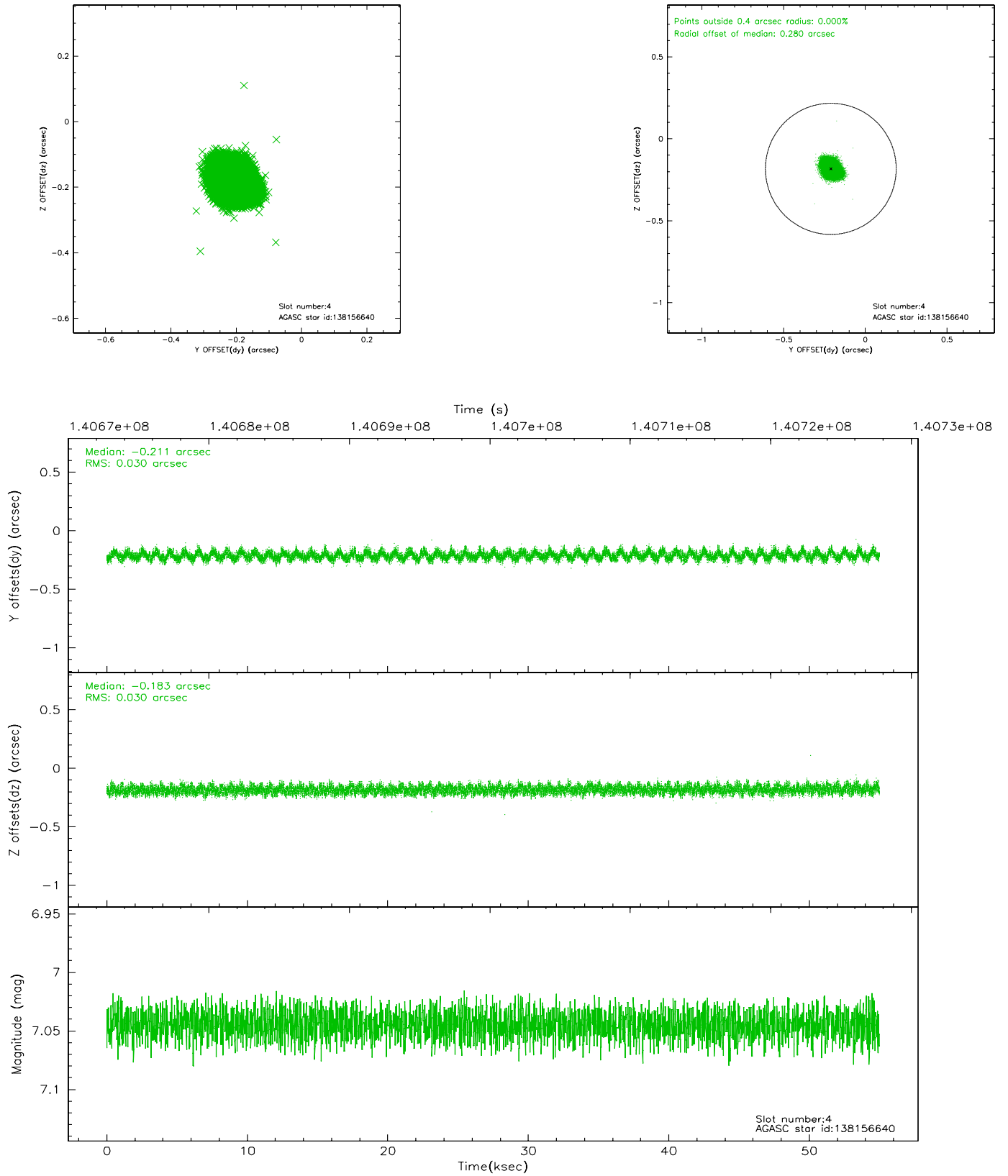
slot	status	id	mag	n_pts	med_dy	med_dz	dr1	dr2	ra	dec	mean_y	mean_z
0	FID	ACIS-I-1	7.25	13416	-0.017	0.031	0.007	0.013	0.000000	0.000000	937.07	-829.96
1	FID	ACIS-I-5	7.24	13416	-0.030	0.042	0.008	0.015	0.000000	0.000000	-1811.04	1067.60
2	FID	ACIS-I-6	7.26	13416	-0.044	-0.003	0.007	0.012	0.000000	0.000000	402.66	1711.98
3	GUIDE	209733992	6.99	26832	-0.143	0.142	0.057	0.091	290.625330	15.058643	1966.12	-1044.19
4	GUIDE	138156640	7.04	26833	-0.211	-0.183	0.046	0.072	290.170188	14.419089	2077.87	1748.35
5	GUIDE	139860136	8.51	26819	0.190	-0.014	0.059	0.093	291.441042	14.451940	-1601.54	-722.09
6	GUIDE	139857944	8.30	26828	0.081	0.160	0.093	0.135	291.837429	14.751125	-2186.04	-2373.08
7	GUIDE	138155168	8.92	26823	0.088	-0.105	0.071	0.112	290.760195	14.144507	-190.29	1485.36

2.4 Star Slots

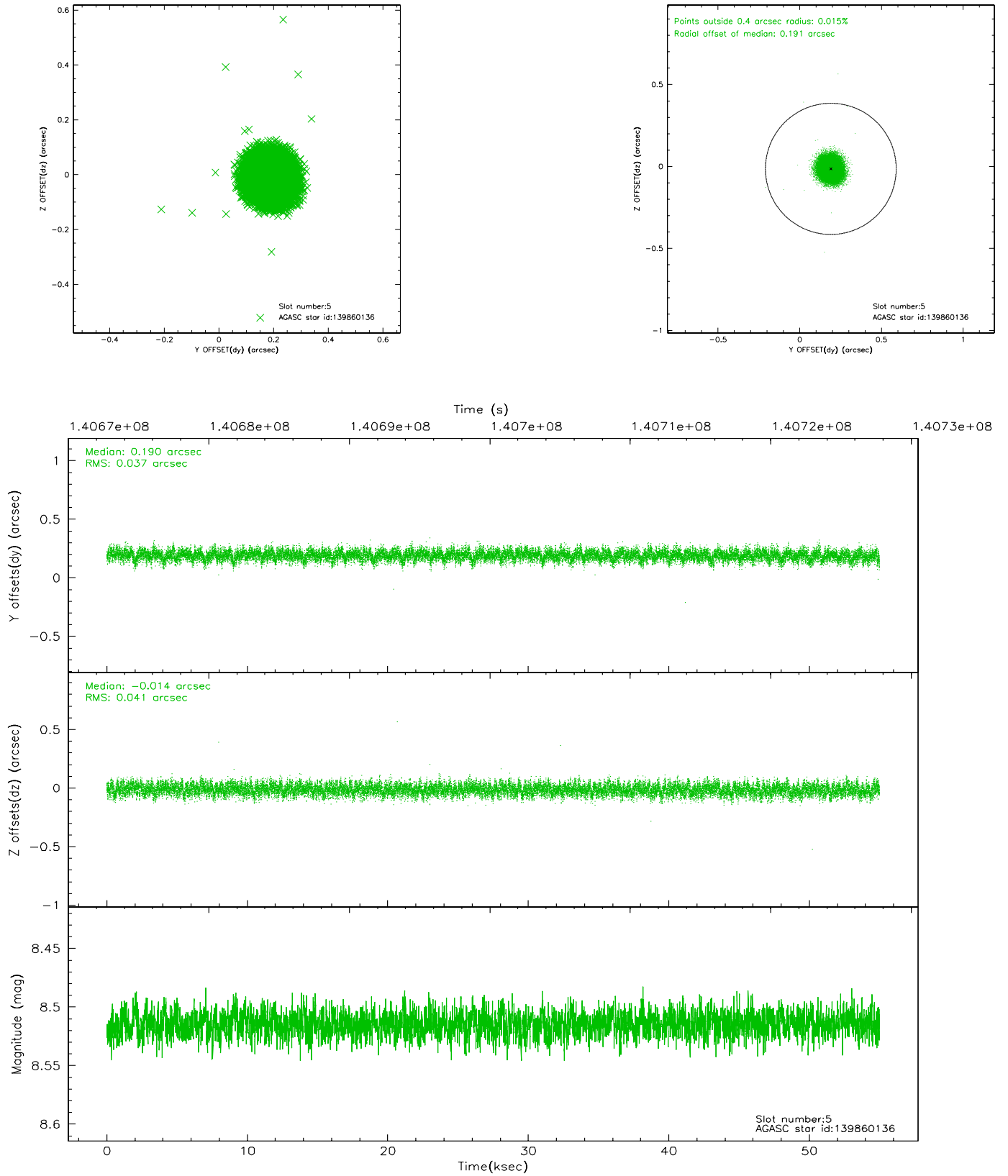
2.4.1 Slot 3



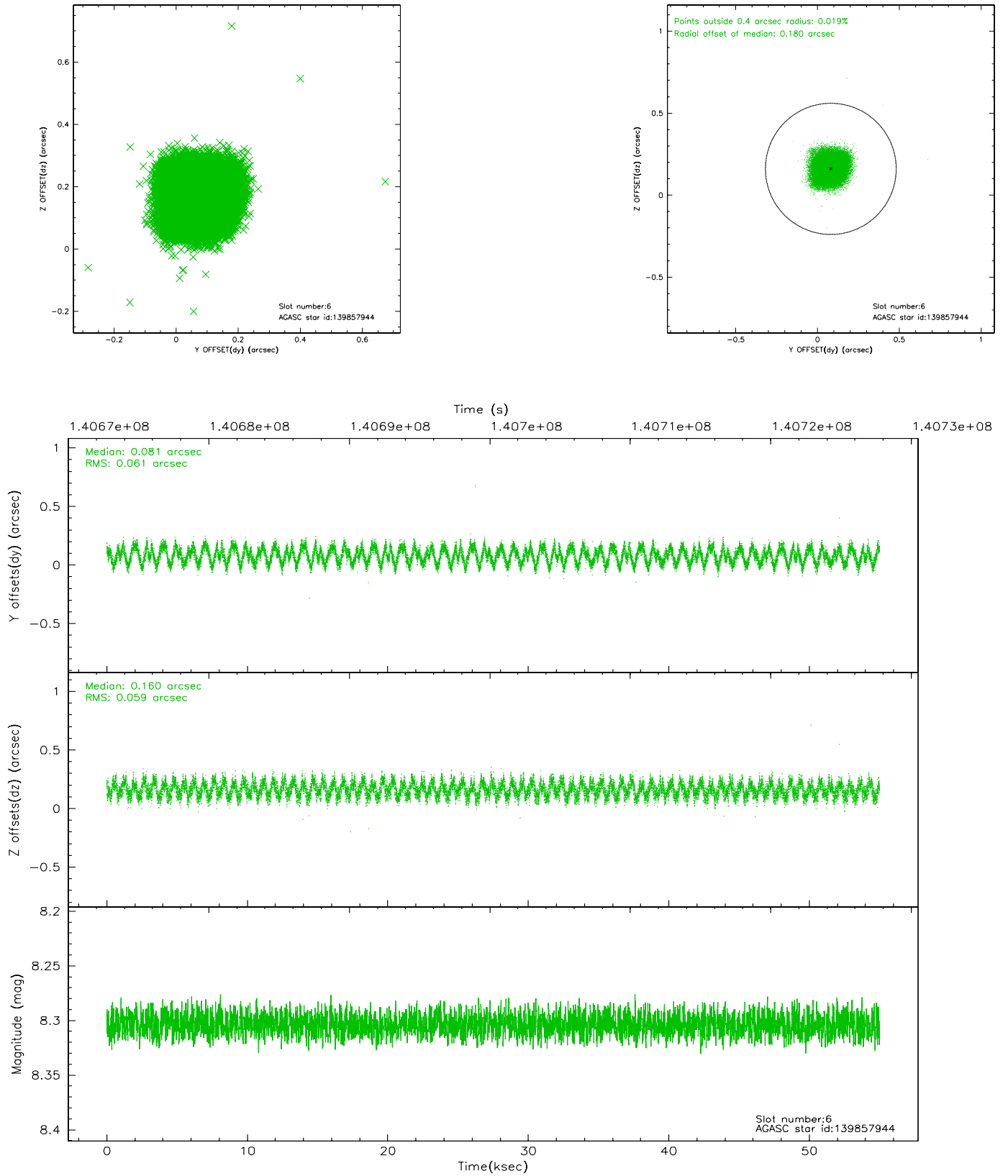
2.4.2 Slot 4



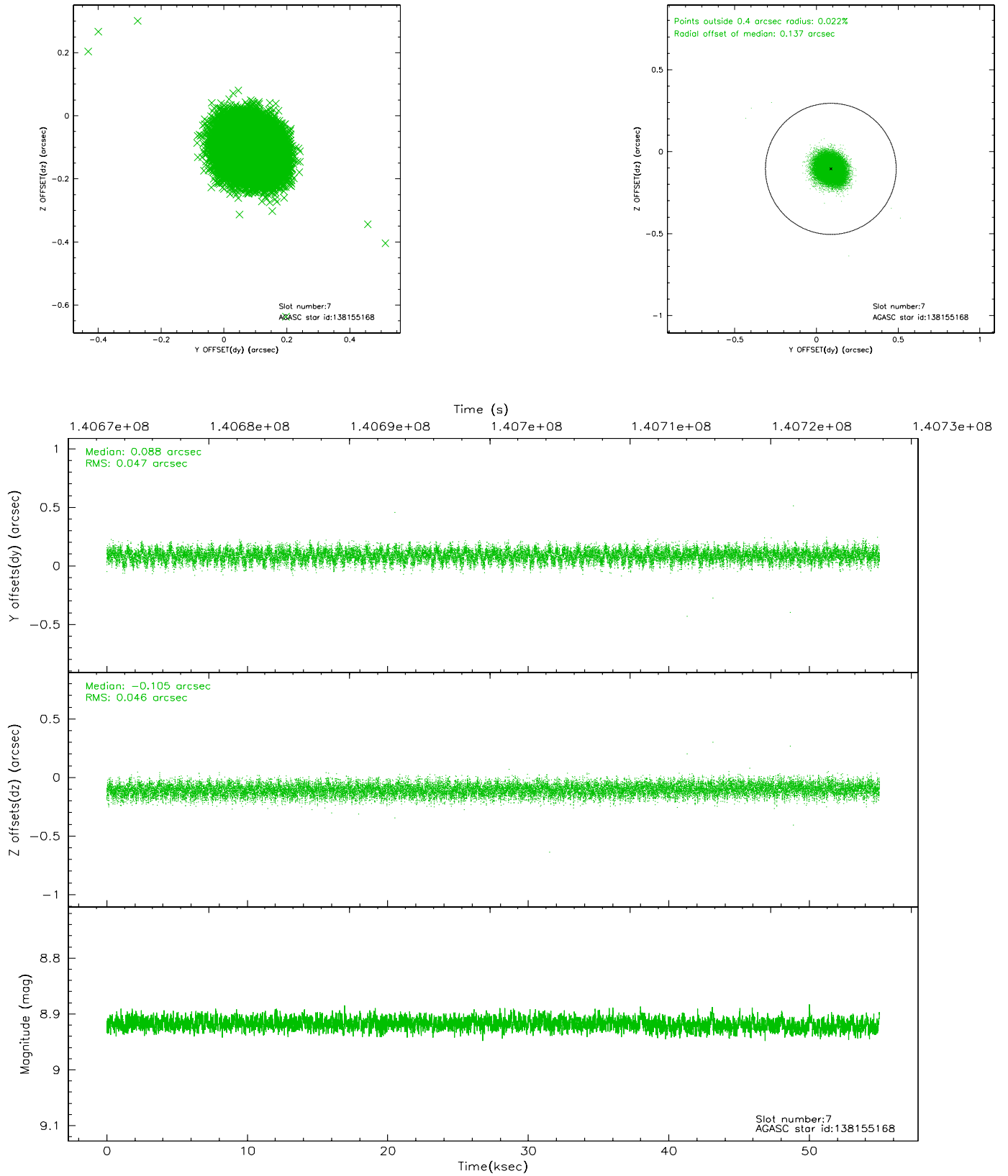
2.4.3 Slot 5



2.4.4 Slot 6

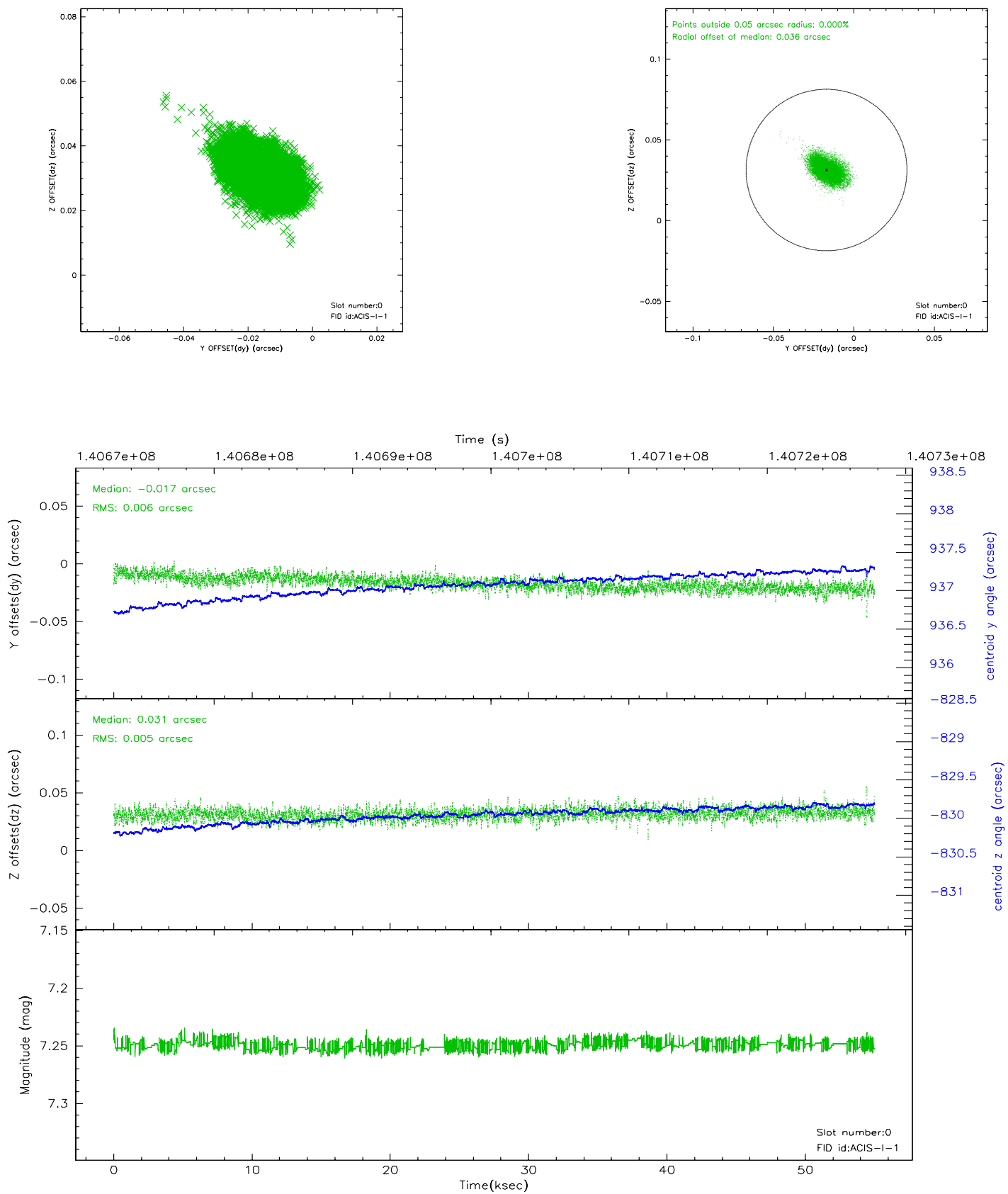


2.4.5 Slot 7

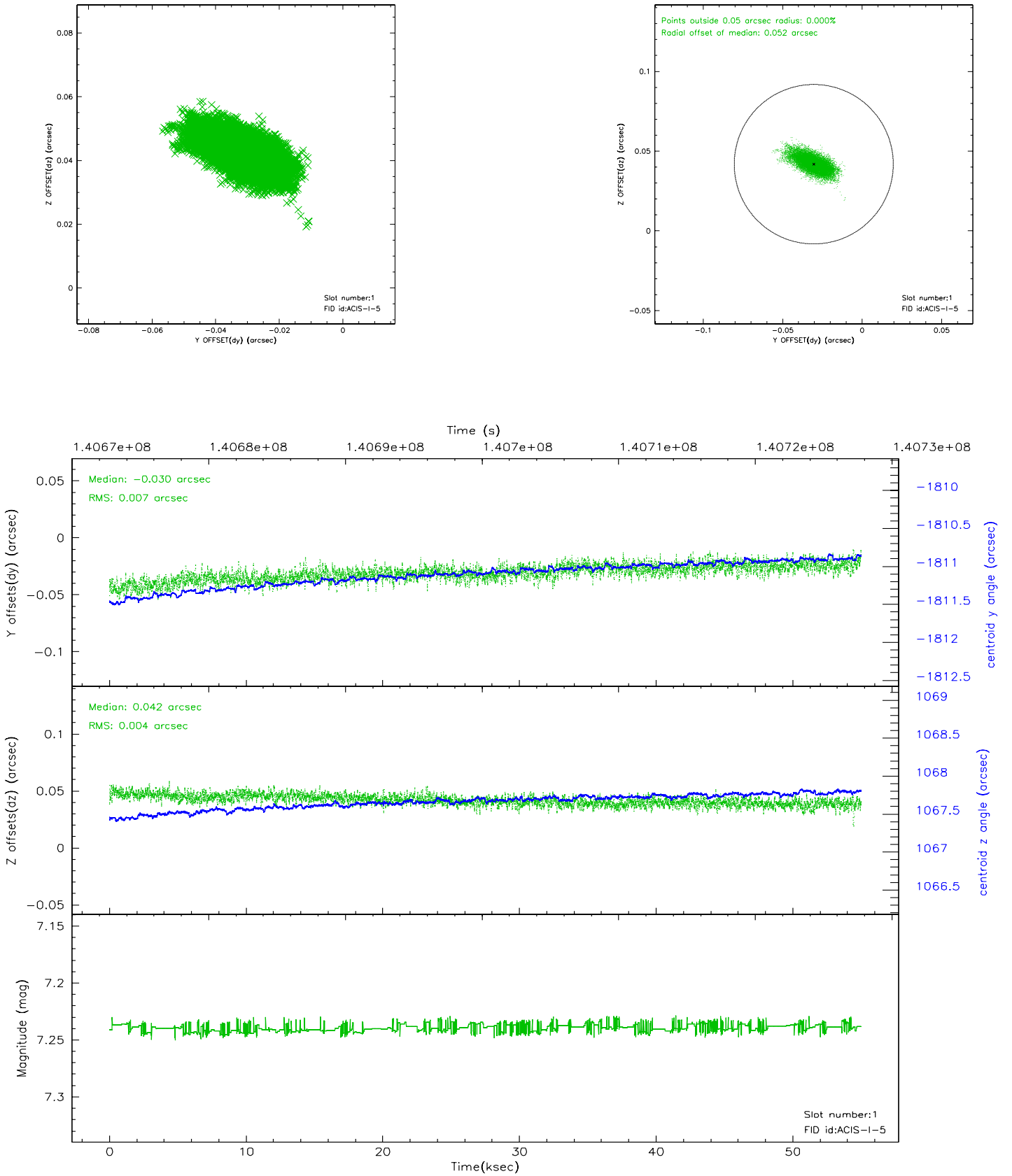


2.5 FID Slots

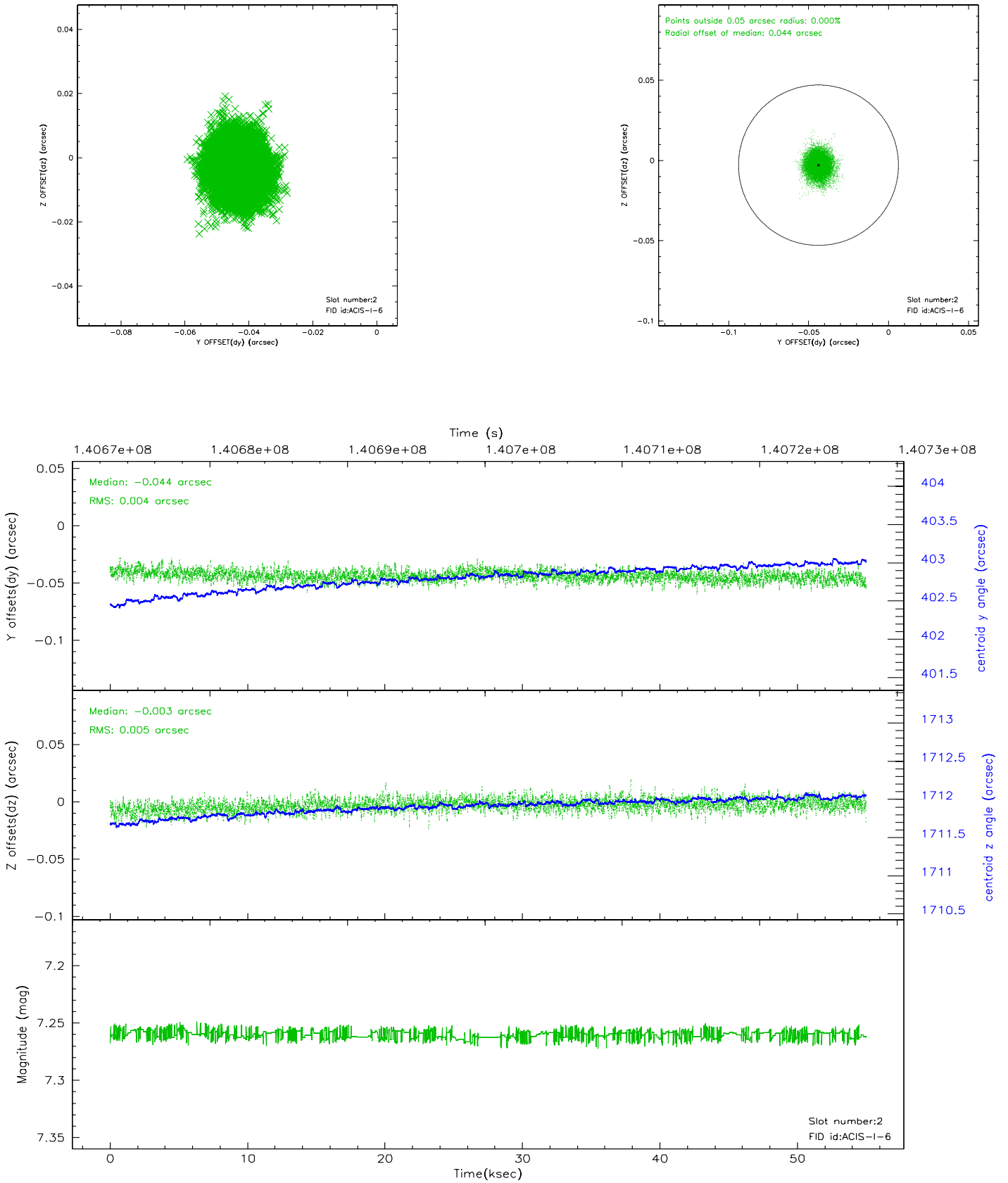
2.5.1 Slot 0



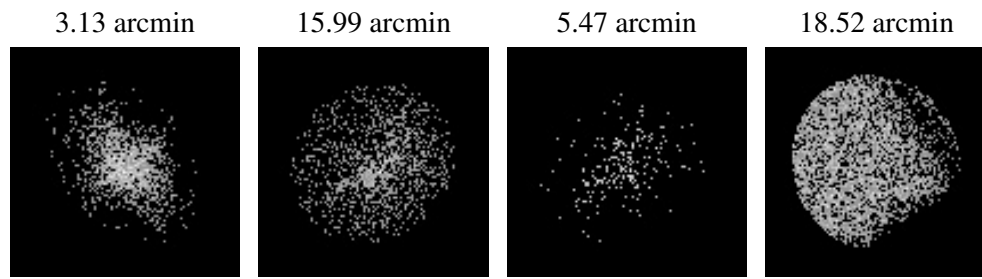
2.5.2 Slot 1



2.5.3 Slot 2



3 Point Sources



A Summary

A.1 Status

V&V Scientist	Jen Lauer
V&V Date (YYYY-MM-DD)	2006.09.20
V&V Edition	1
V&V Disposition and Status	OK
V&V Charge Time	54.083

A.2 Comments