

V&V Reference Report

L2 ASCDS Version : 7.6.9

Observation 2296 - L2 Version 001
Chandra X-Ray Center

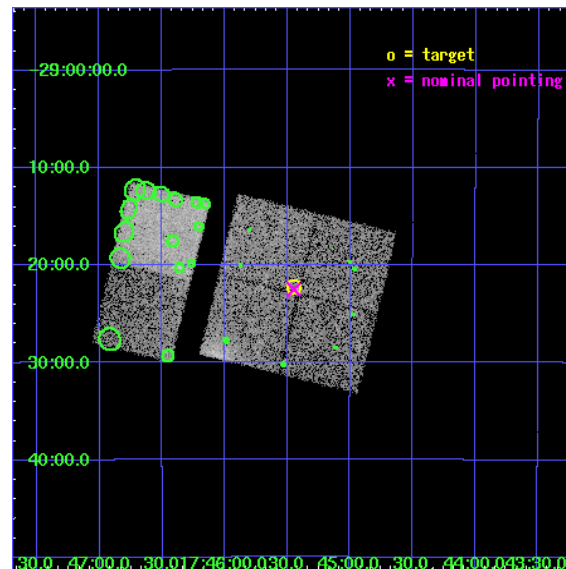
L2 Processing Date : Dec 14 2006

Contents

1	Front	2
2	OBI	3
2.1	OBI	3
2.1.1	Images	3
2.1.2	Bias	3
2.1.3	Parameters	4
2.1.4	Events	4
2.2	Compared Parameters	5
2.3	Aspect	6
2.4	Star Slots	9
2.4.1	Slot 3	9
2.4.2	Slot 4	10
2.4.3	Slot 5	11
2.4.4	Slot 6	12
2.4.5	Slot 7	13
2.5	FID Slots	14
2.5.1	Slot 0	14
2.5.2	Slot 1	15
2.5.3	Slot 2	16
3	Point Sources	17
A	Summary	18
A.1	Status	18
A.2	Comments	18

1 Front

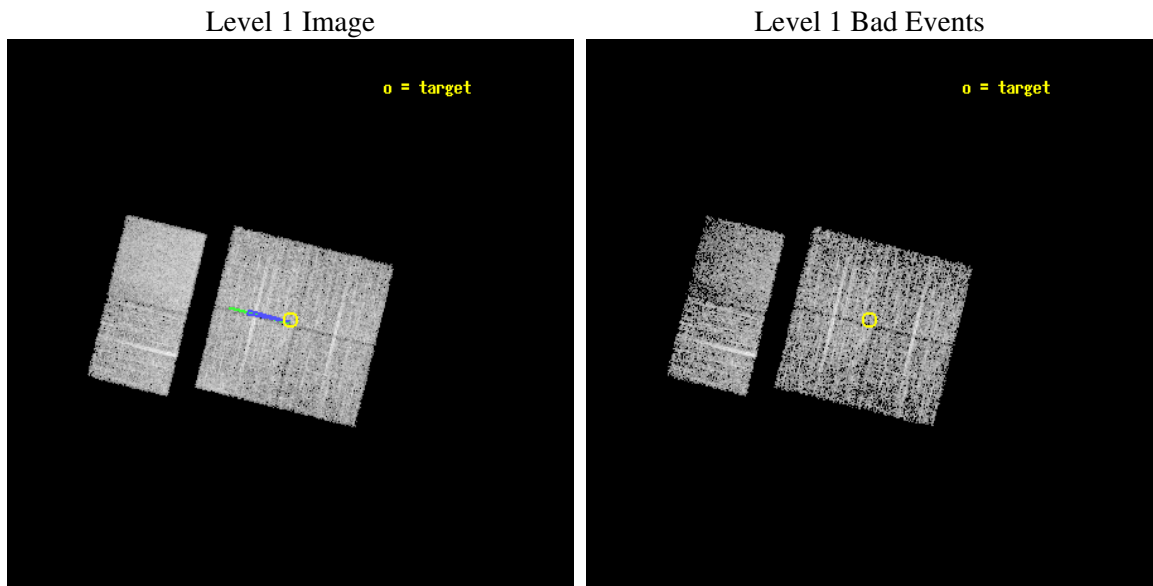
seq_num	900123
obs_id	2296
title	CHANDRA SURVEY OF THE GALACTIC RIDGE AROUND THE MILKY WAY CENTER
observer	Prof. Q. Daniel Wang
object	GCS 19
dtcycle	0
cycle	P
ra_targ	266.3628
dec_targ	-29.3707
ra_nom	266.3619816464
dec_nom	-29.375408082595
roll_nom	283.80726346005
revision	2
ontime	11257.600010484
livetime	11115.049500639
ontime0	11257.600010484
ontime1	11254.358990401
ontime2	11254.359040231
ontime3	11257.600010484
ontime6	11257.600010484
ontime7	11257.600010484
l2events	55661



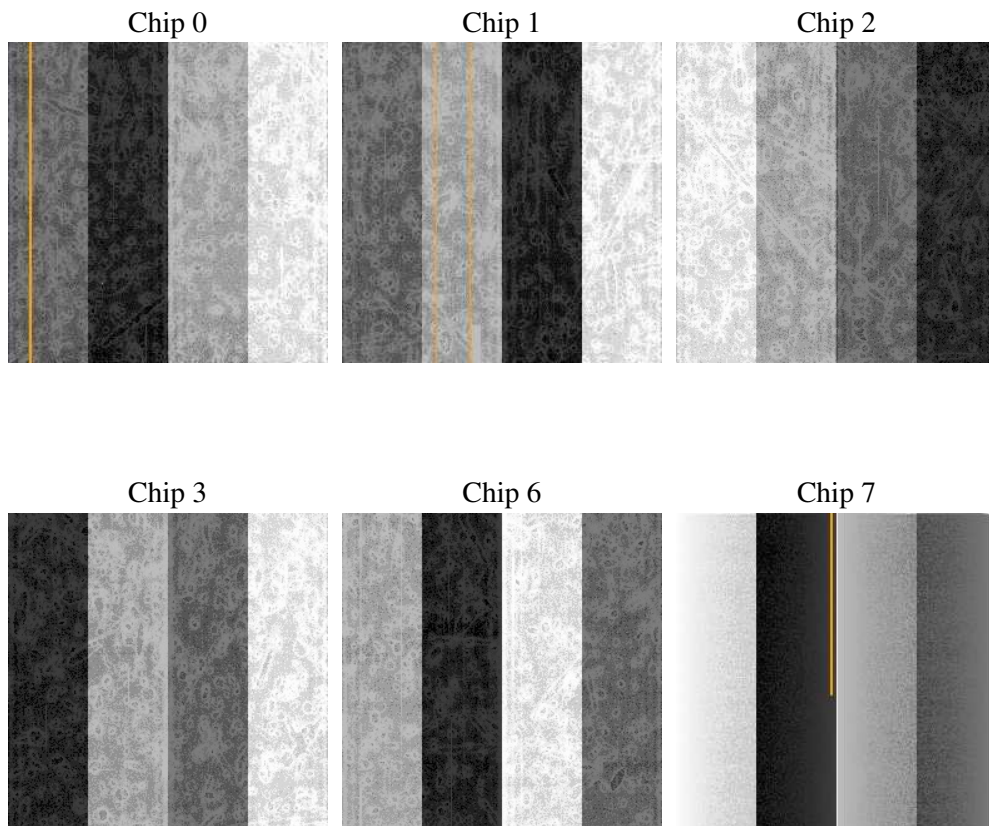
2 OBI

2.1 OBI

2.1.1 Images



2.1.2 Bias



2.1.3 Parameters

obi_num	0
ascdsver	7.6.9
caldbver	3.2.4
date	2006-12-14T14:02:46
revision	2

sched_exp_time	11500.000000
ontime	11262.498520583
ontime0	11262.498520583
ontime1	11259.257500499
ontime2	11259.257550329
ontime3	11262.498520583
ontime6	11262.498520583
ontime7	11262.498520583
l1events	200405

2.1.4 Events

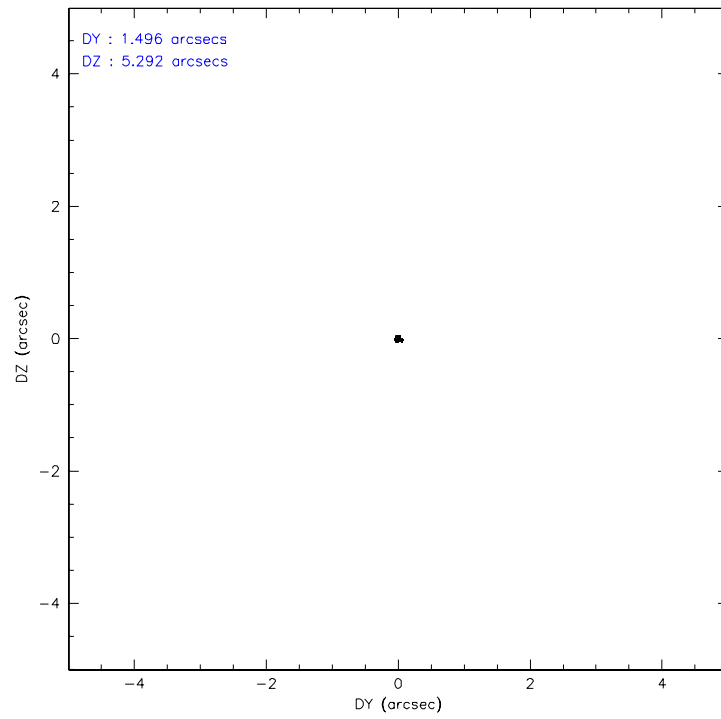
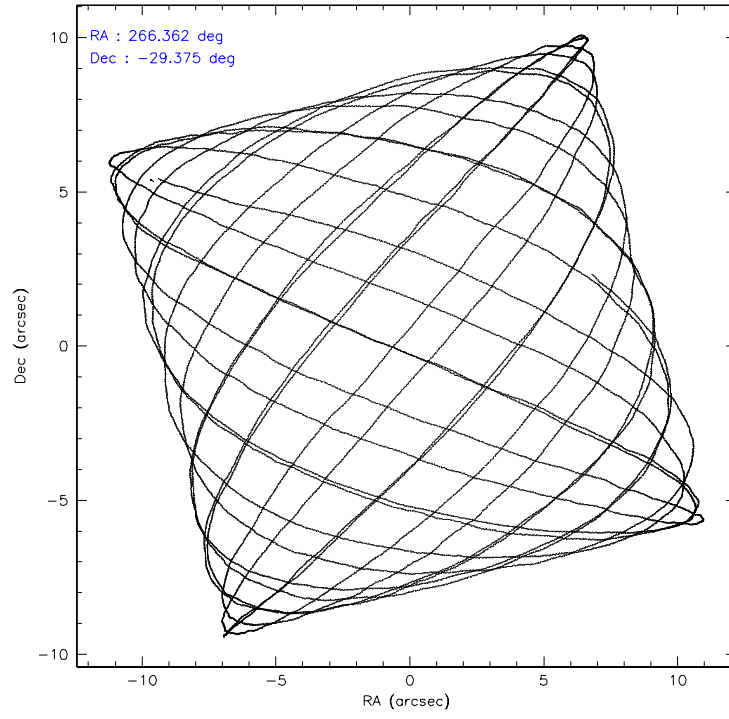
	ccd 0	ccd 1	ccd 2	ccd 3	ccd 6	ccd 7
level 1 events	28270	30373	34233	34032	33736	39761
rejected events	21736	22996	24806	25344	27251	18948
rejected %	76%	75%	72%	74%	80%	47%

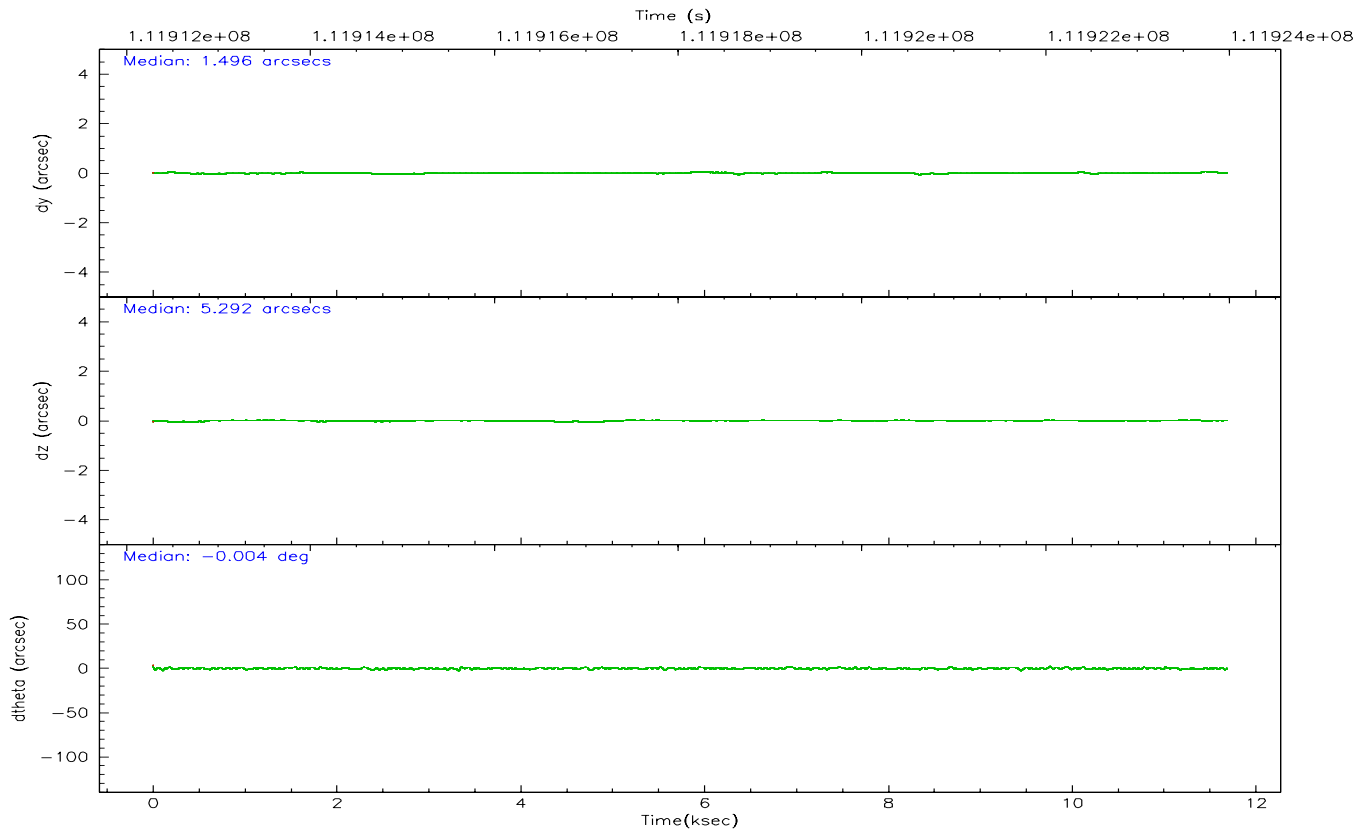
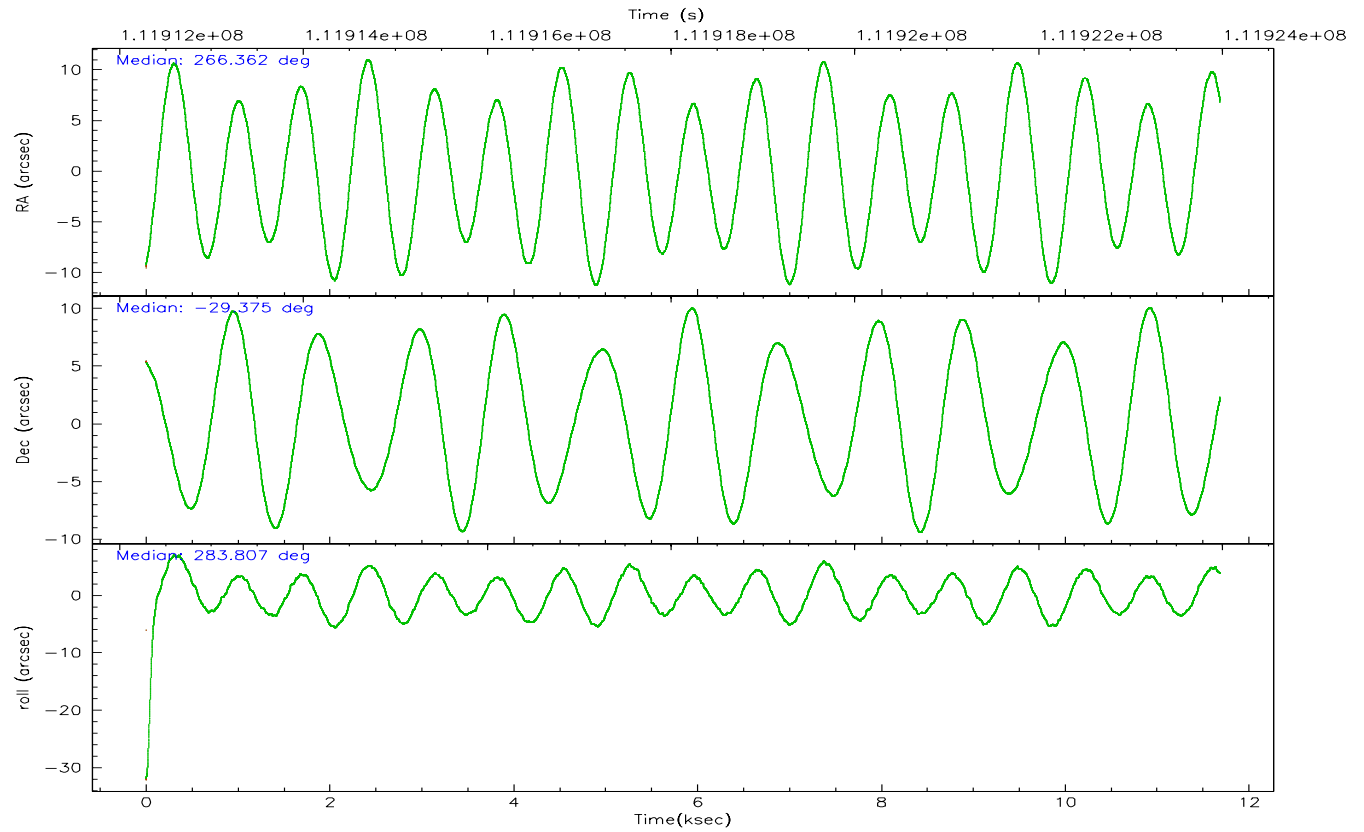
	ccd 0	ccd 1	ccd 2	ccd 3	ccd 6	ccd 7
grade 0 events	3356	3653	5609	5013	3249	1522
	11%	12%	16%	14%	9%	3%
grade 1 events	27	24	45	34	34	30
	0%	0%	0%	0%	0%	0%
grade 2 events	1239	1400	1592	1507	1188	5458
	4%	4%	4%	4%	3%	13%
grade 3 events	506	547	641	580	492	1229
	1%	1%	1%	1%	1%	3%
grade 4 events	486	635	581	591	521	1205
	1%	2%	1%	1%	1%	3%
grade 5 events	1143	1294	1080	1313	1428	3209
	4%	4%	3%	3%	4%	8%
grade 6 events	950	1146	1008	1002	1038	11409
	3%	3%	2%	2%	3%	28%
grade 7 events	20563	21674	23677	23992	25786	15699
	72%	71%	69%	70%	76%	39%

2.2 Compared Parameters

Parameter	Planned	Actual	Parameter	Planned	Actual
Instrument	ACIS	ACIS	Obspar format version number	6	6
Detector	ACIS-012367	ACIS-012367	Obspar file type	PREDICTED	ACTUAL
Grating	NONE	NONE	Obspar update status	NONE	UPDATED
Data mode	FAINT	FAINT	Number of optional ACIS chips dropped	0	0
Observation mode	POINTING	POINTING	On-chip summing requested	N	N
Pointing RA	266.340112	266.3619816464046	Subarray requested	NONE	NONE
Pointing Dec	-29.355594	-29.37540808259459	Alternating exposures requested	N	N
Pointing Roll	283.587872	283.8072634600526	Primary exposure time	0.000000	3.2
Roll angle	283.600000	283.600000			
Roll tolerance	2.000000	2.000000			
Roll constraint allows 180D rotation	N	N			
SIM focus pos (mm)	-0.782348	-0.7809083437167272			
SIM defocus (mm)	0	0.001439871863259334			
SIM translation stage pos (mm)	-233.592463	-233.5874344608287			
SIM translation stage offset (mm)	0	-0.005018542100998502			
Observation start time	111912474.184000	111912098.21842			
Observation start date	2001-07-19T06:46:50	2001-07-19T06:41:38			
Observation end time	111923974.184000	111924108.14389			
Observation end date	2001-07-19T09:58:30	2001-07-19T10:01:48			
Read mode	TIMED	TIMED			

2.3 Aspect



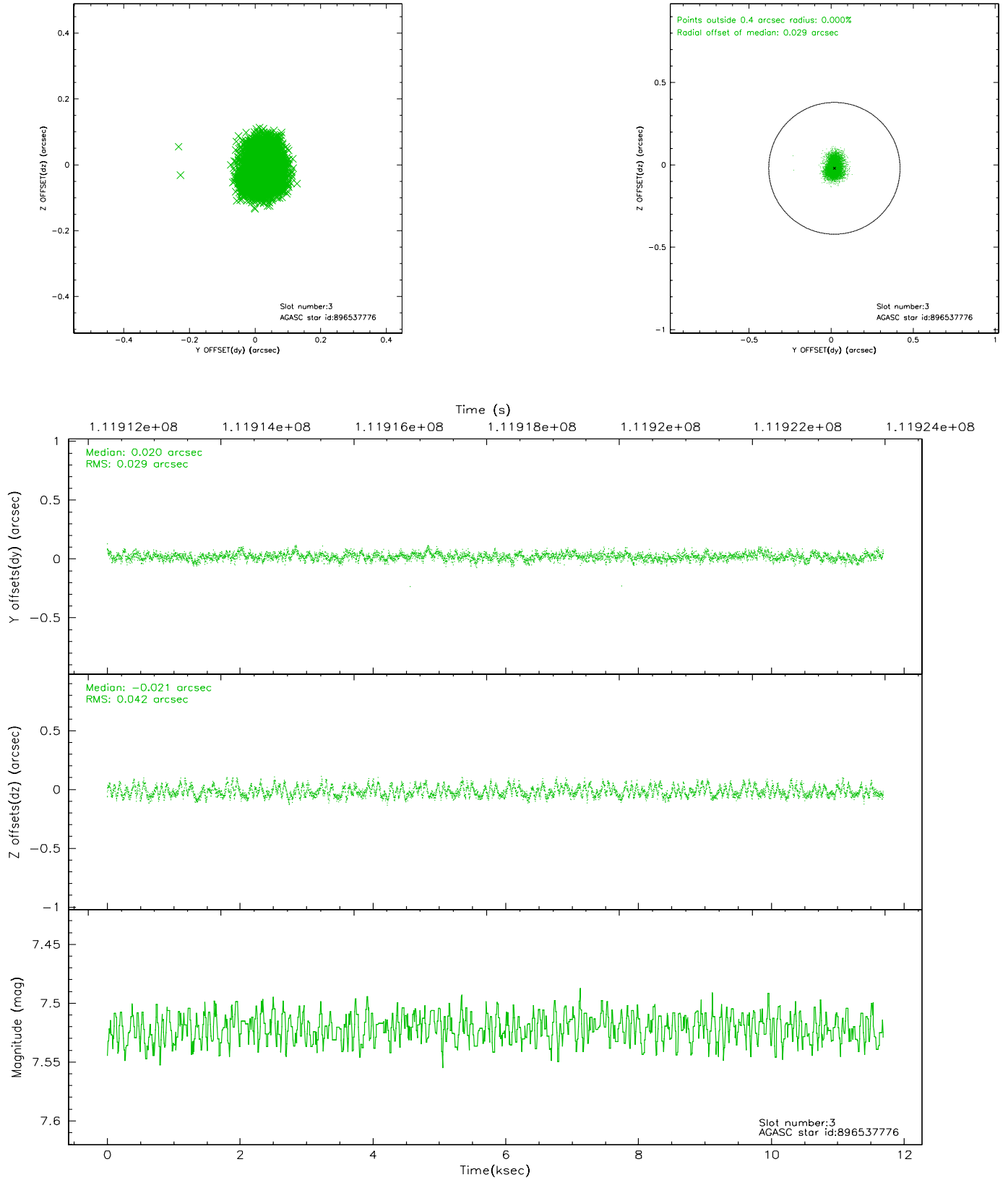


Slot Statistics

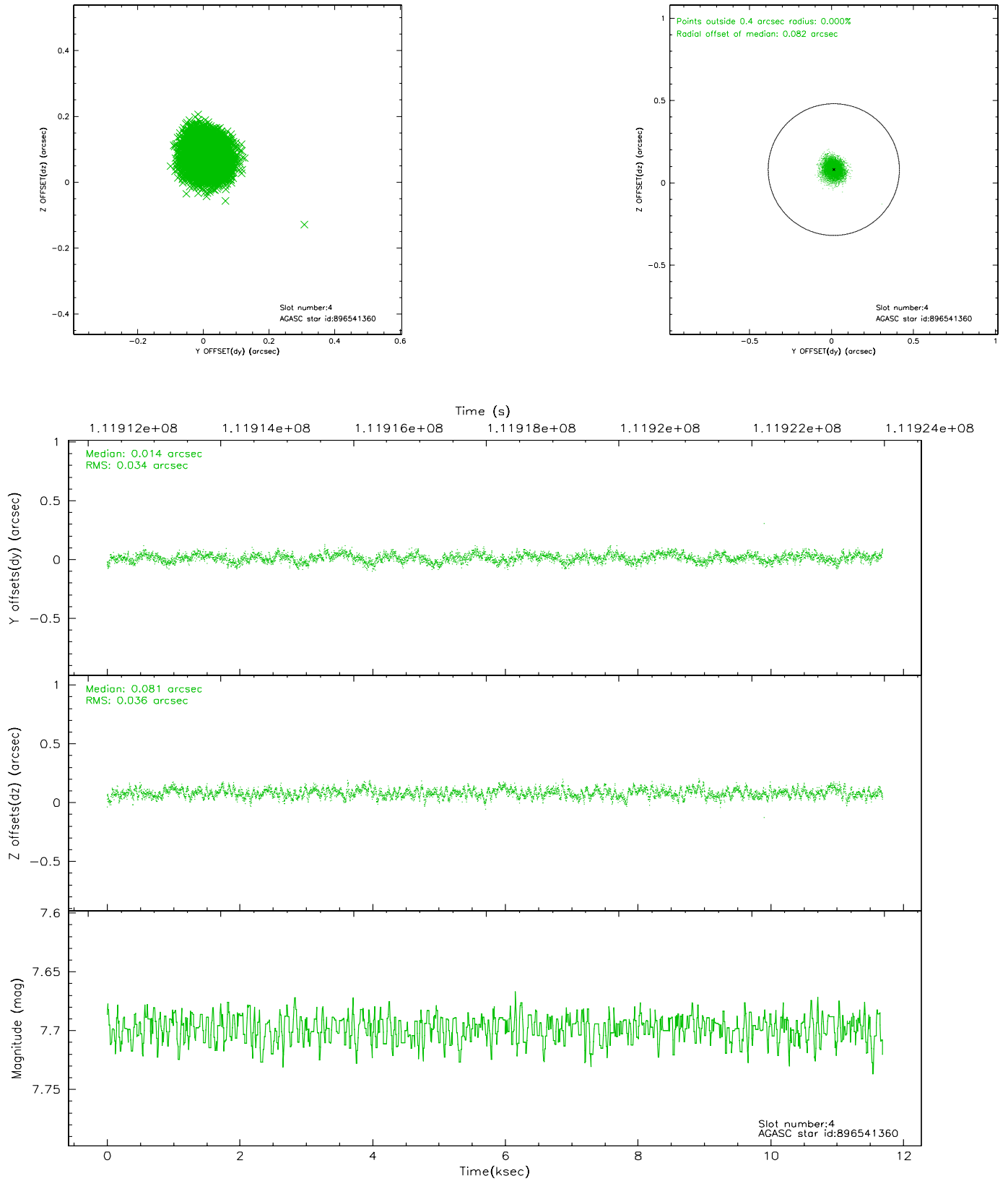
slot	status	id	mag	n_pts	med_dy	med_dz	dr1	dr2	ra	dec	mean_y	mean_z
0	FID	ACIS-I-2	7.15	2850	-0.031	0.010	0.007	0.011	0.000000	0.000000	-755.84	-835.01
1	FID	ACIS-I-4	7.19	2852	-0.059	0.019	0.007	0.011	0.000000	0.000000	2157.95	1071.02
2	FID	ACIS-I-6	7.27	2852	-0.011	0.034	0.009	0.015	0.000000	0.000000	404.75	1713.67
3	GUIDE	896537776	7.52	5703	0.020	-0.021	0.055	0.088	266.655684	-29.665673	1319.25	696.79
4	GUIDE	896541360	7.70	5703	0.014	0.081	0.053	0.085	266.684478	-29.453744	599.83	965.93
5	GUIDE	896537176	8.02	5703	-0.090	0.039	0.050	0.082	266.498272	-28.678259	-2251.50	1058.44
6	GUIDE	896540808	7.50	5702	-0.018	-0.009	0.044	0.072	265.985401	-29.308604	-423.84	-1042.98
7	GUIDE	896536320	8.97	5701	0.076	-0.093	0.067	0.111	266.369048	-29.307026	-147.63	128.93

2.4 Star Slots

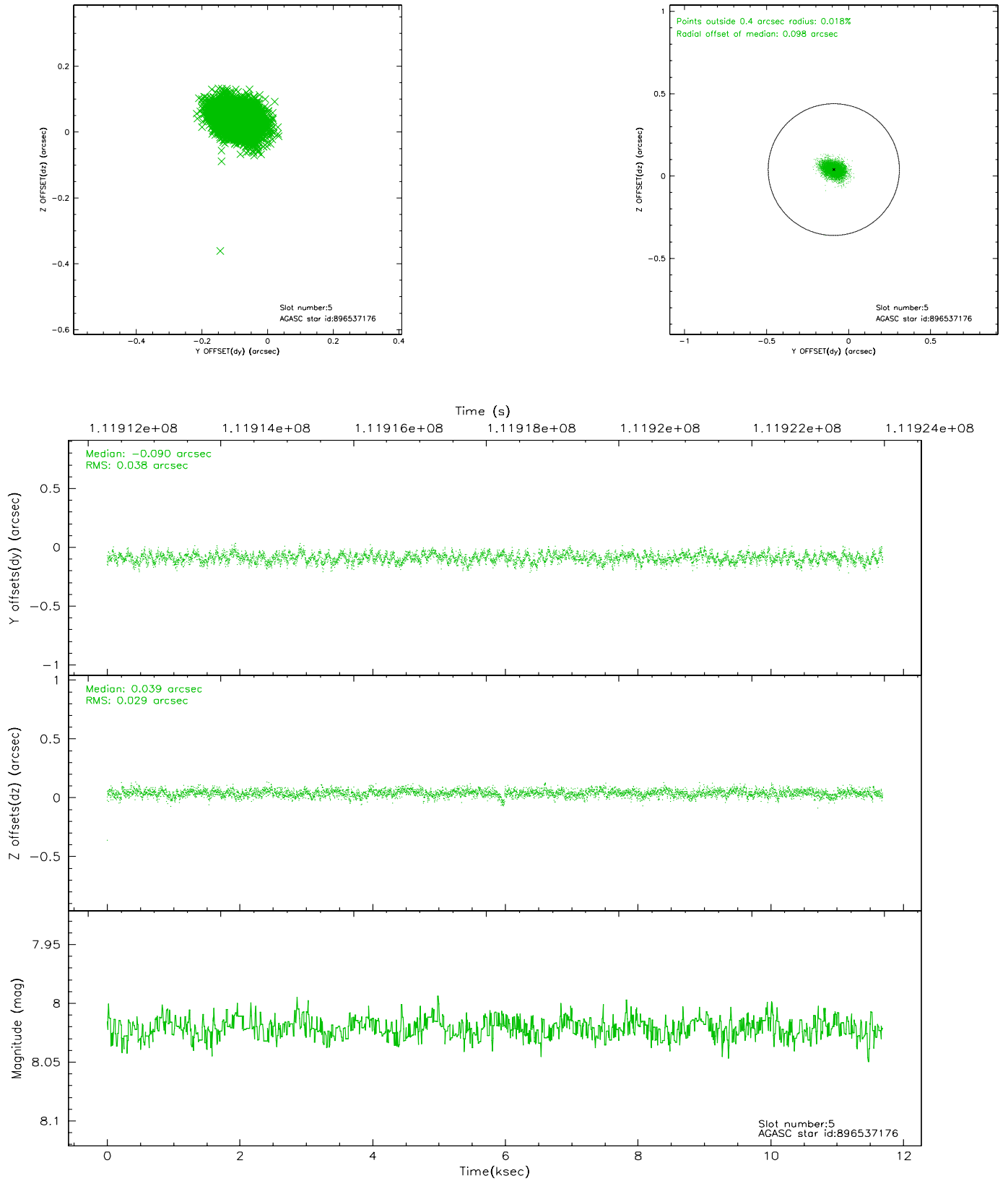
2.4.1 Slot 3



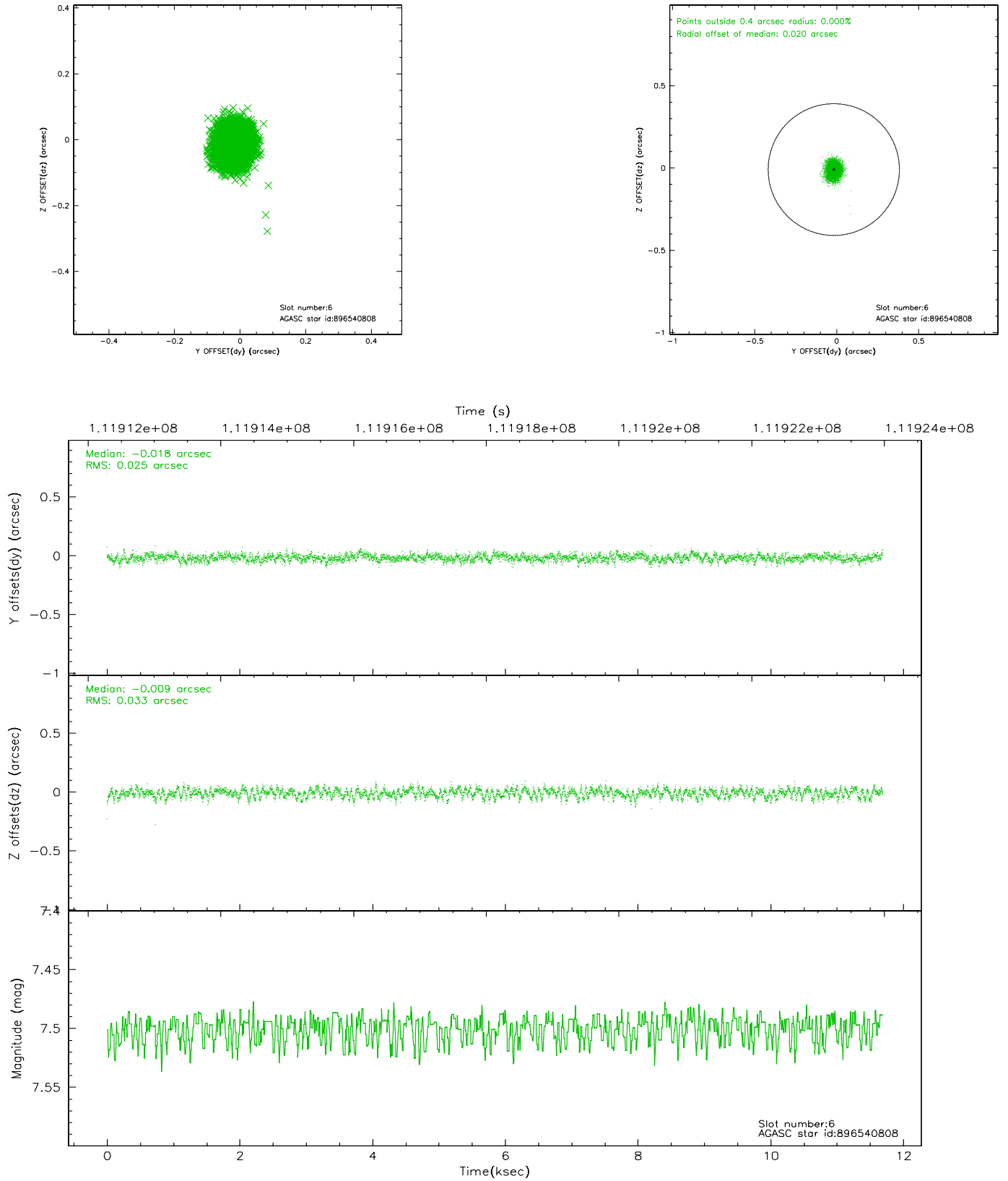
2.4.2 Slot 4



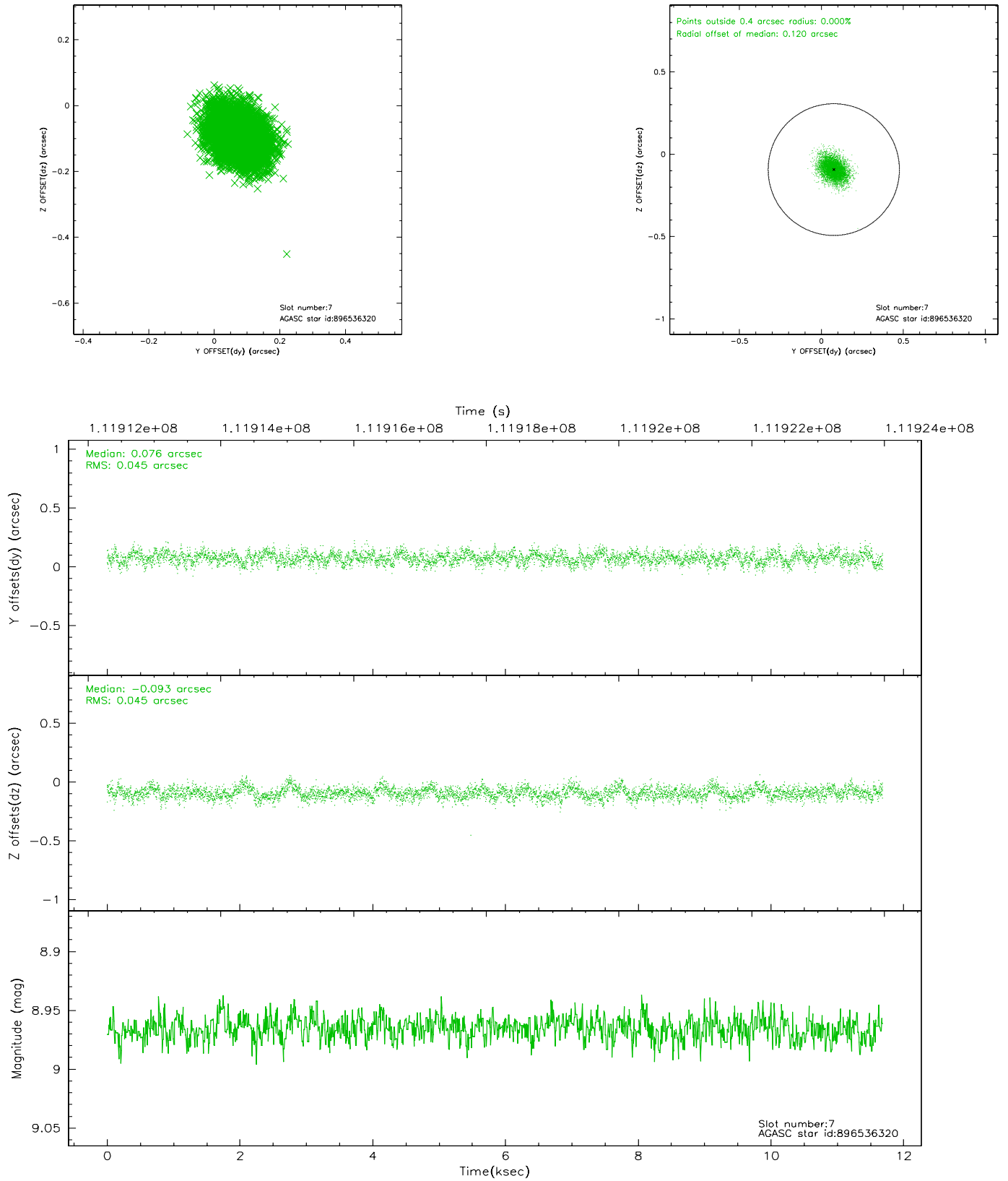
2.4.3 Slot 5



2.4.4 Slot 6

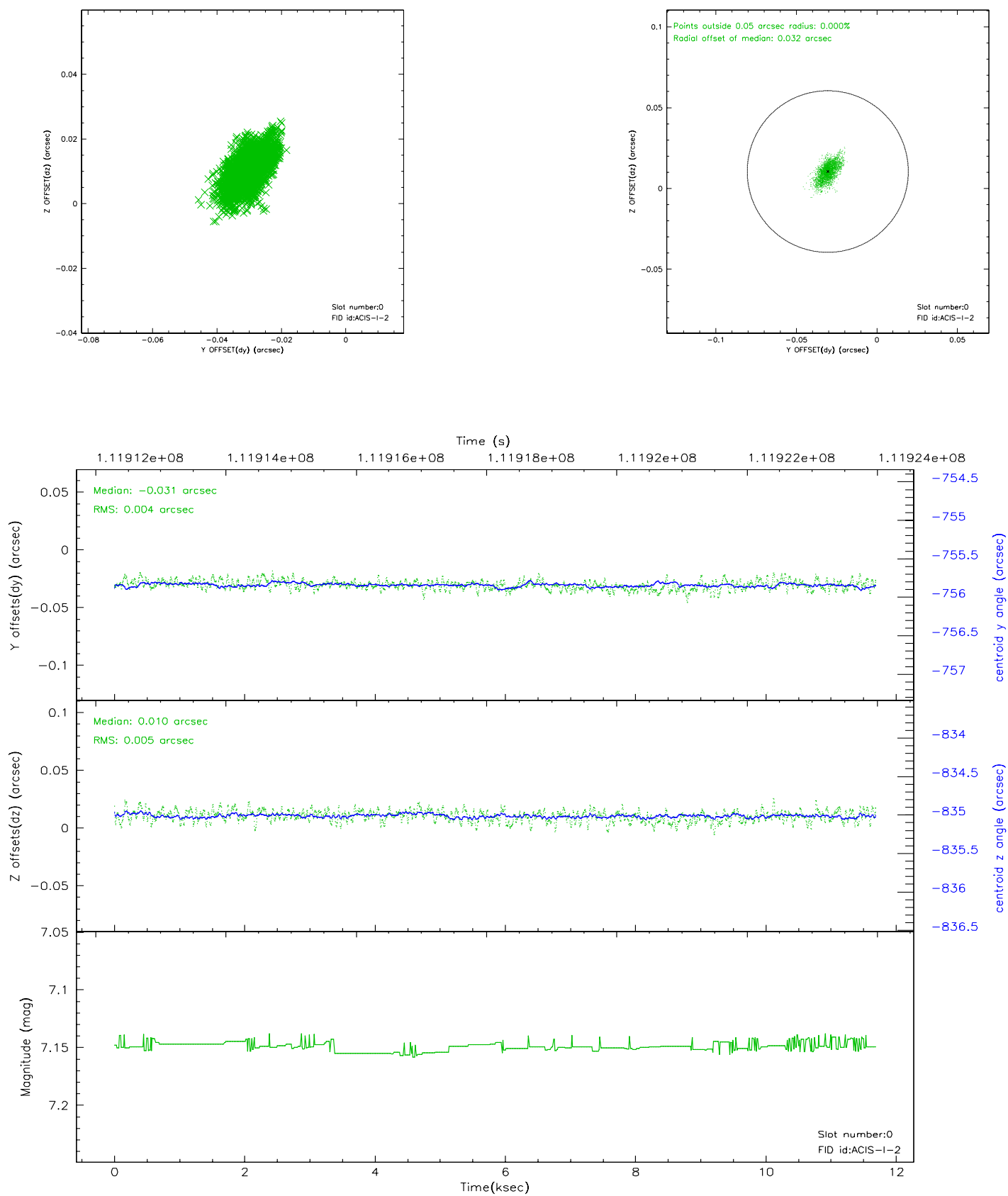


2.4.5 Slot 7

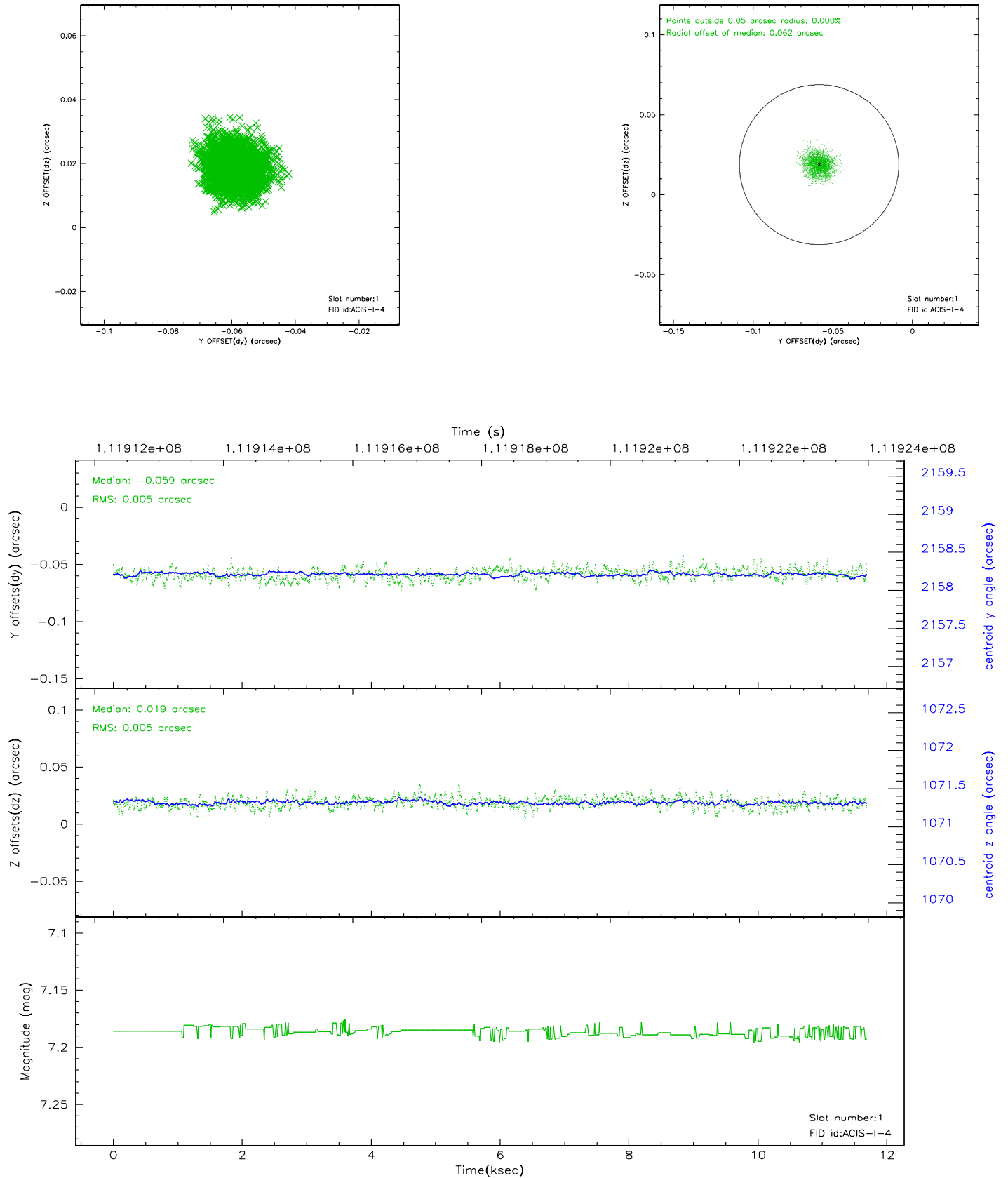


2.5 FID Slots

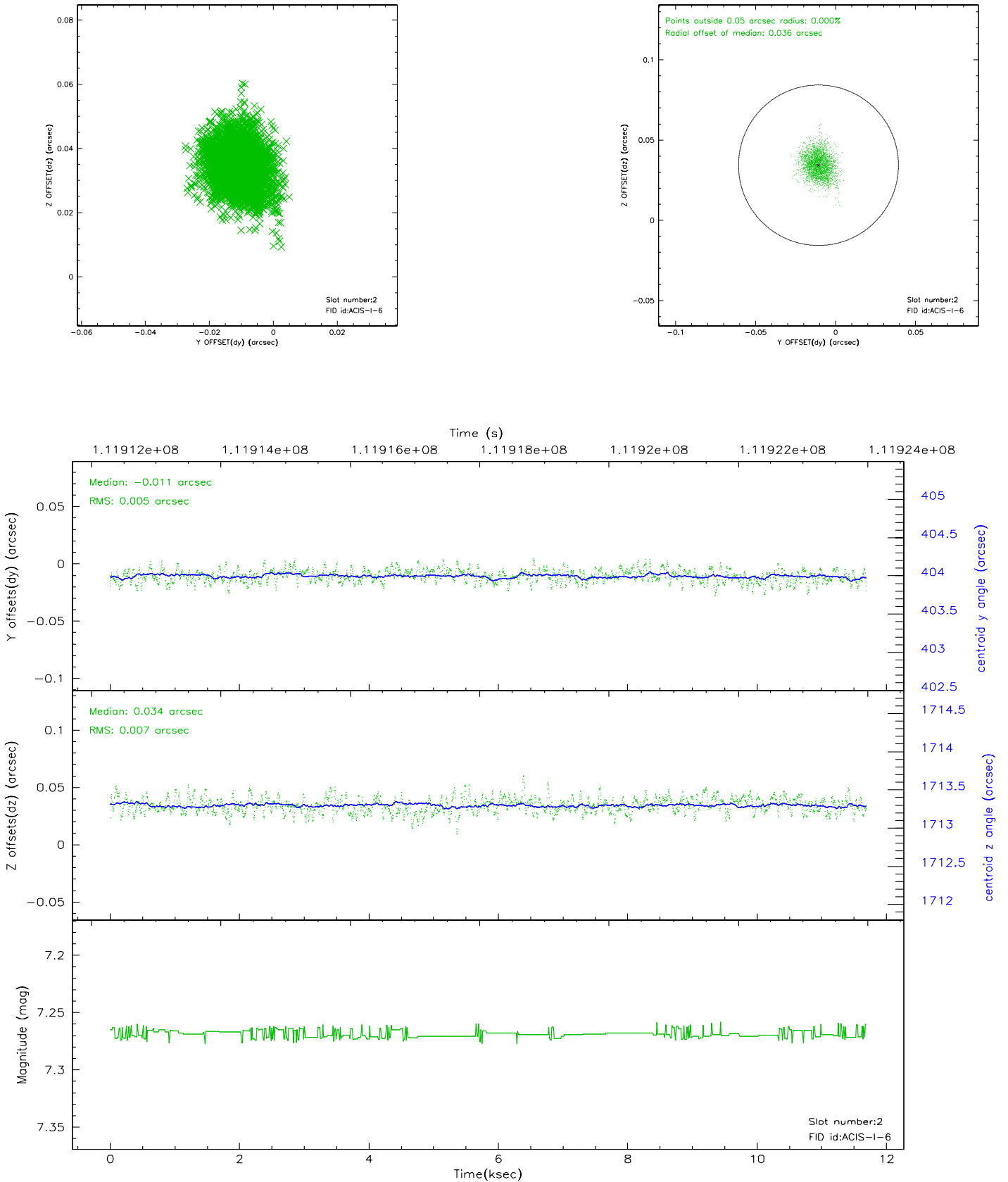
2.5.1 Slot 0



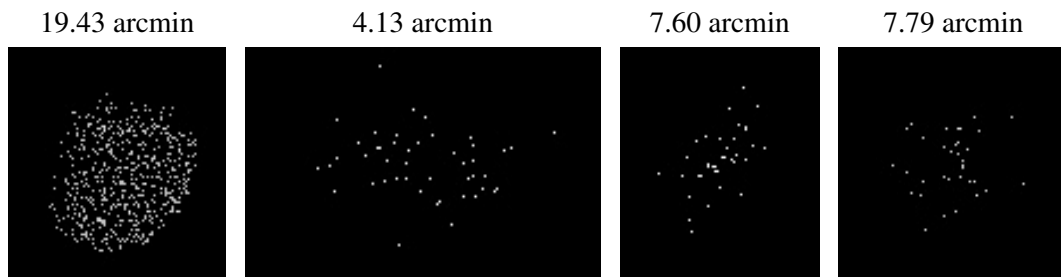
2.5.2 Slot 1



2.5.3 Slot 2



3 Point Sources



A Summary

A.1 Status

V&V Scientist	Jen Lauer
V&V Date (YYYY-MM-DD)	2006.12.14
V&V Edition	1
V&V Disposition and Status	OK
V&V Charge Time	11.26

A.2 Comments

Roll constraint met.