

V&V Reference Report

L2 ASCDS Version : 8.4.5

Observation 2289 - L2 Version 3
Chandra X-Ray Center

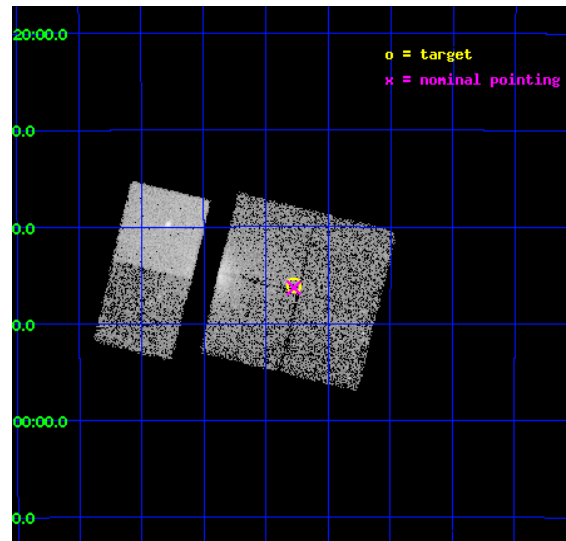
L2 Processing Date : Sep 20 2012

Contents

1	Front	2
2	OBI	3
2.1	OBI	3
2.1.1	Images	3
2.1.2	Bias	3
2.1.3	Parameters	4
2.1.4	Events	4
2.2	Compared Parameters	5
2.3	Aspect	6
2.4	Star Slots	9
2.4.1	Slot 3	9
2.4.2	Slot 4	10
2.4.3	Slot 5	11
2.4.4	Slot 6	12
2.4.5	Slot 7	13
2.5	FID Slots	14
2.5.1	Slot 0	14
2.5.2	Slot 1	15
2.5.3	Slot 2	16
A	Summary	17
A.1	Status	17
A.2	Comments	17

1 Front

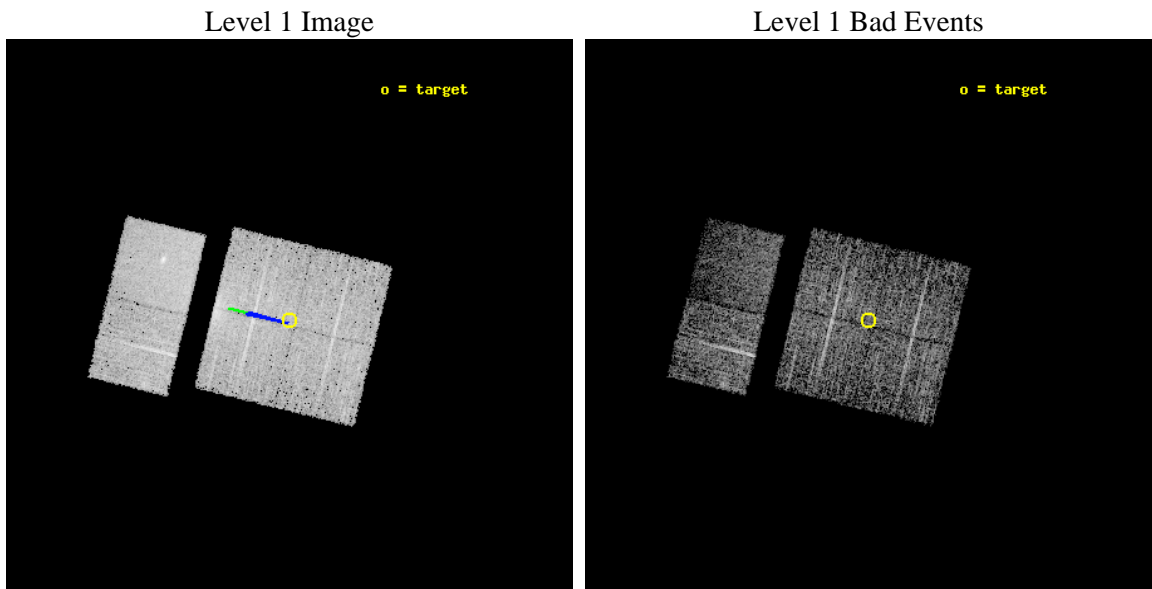
seq_num	900116	Sequence number
obs_id	2289	Observation id
title	CHANDRA SURVEY OF THE GALACTIC RIDGE AROUND THE MILKY WAY CENTER	P
observer	Prof. Q. Daniel Wang	Principal investigator
object	GCS 29	Source name
dtcycle	0	
cycle	P	events from which exps? Prim/Second/Both
ra_targ	265.8198	Observer's specified target RA [deg]
dec_targ	-29.7671	Observer's specified target Dec [deg]
ra_nom	265.81894884338	Nominal RA [deg]
dec_nom	-29.771748960989	Nominal Dec [deg]
roll_nom	283.80728149978	Nominal Roll [deg]
revision	3	Processing version of data
ontime	11760.000010937	Sum of GTIs [s]
livetime	11611.087809777	Livetime [s]
ontime0	11756.759030685	Sum of GTIs [s]
ontime1	11760.000010937	Sum of GTIs [s]
ontime2	11760.000010937	Sum of GTIs [s]
ontime3	11760.000010937	Sum of GTIs [s]
ontime6	11760.000010937	Sum of GTIs [s]
ontime7	11760.000010937	Sum of GTIs [s]
l2events	57773	Number of level 2 events



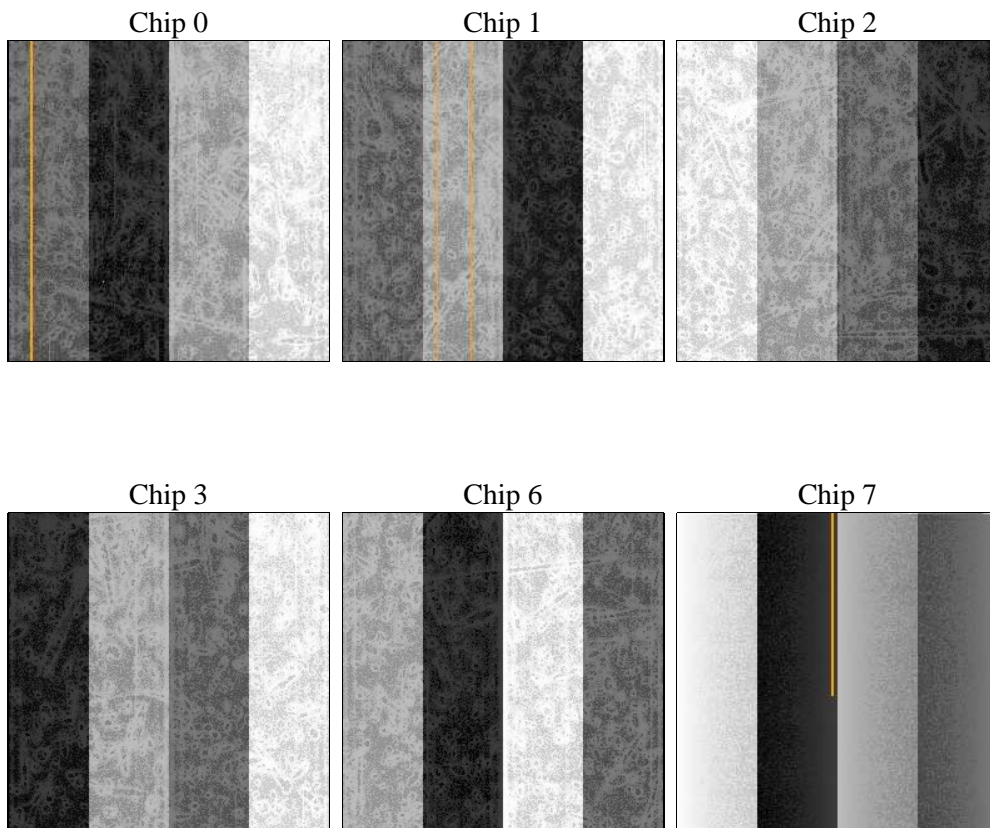
2 OBI

2.1 OBI

2.1.1 Images



2.1.2 Bias



2.1.3 Parameters

obi_num	0	Obi number	sched_exp_time	12000.000000	[s] Scheduled observation exposure time
ascdsver	8.4.5	Processing system revision	ontime	11760.000010937	Sum of GTIs [s]
caldsver	4.5.1.1	 	ontime0	11756.759030685	Sum of GTIs [s]
date	2012-09-20T19:36:22	Date and time of file creation	ontime1	11760.000010937	Sum of GTIs [s]
revision	3	Processing version of data	ontime2	11760.000010937	Sum of GTIs [s]
			ontime3	11760.000010937	Sum of GTIs [s]
			ontime6	11760.000010937	Sum of GTIs [s]
			ontime7	11760.000010937	Sum of GTIs [s]
			l1events	206638	Number of level 1 events

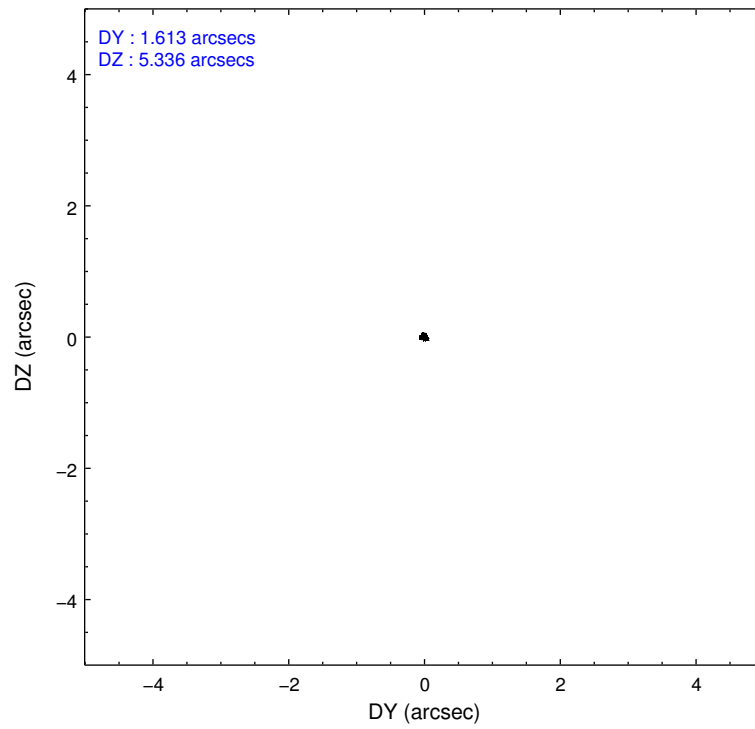
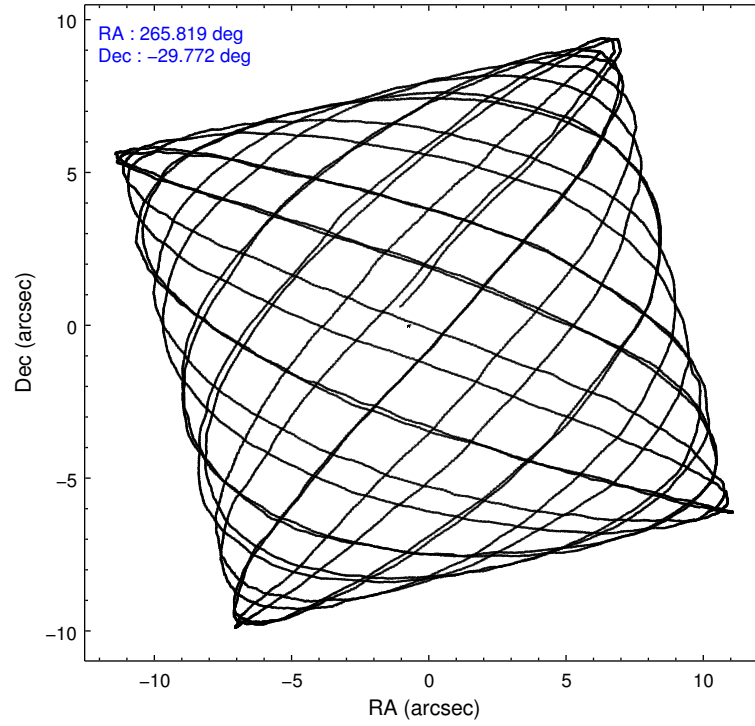
2.1.4 Events

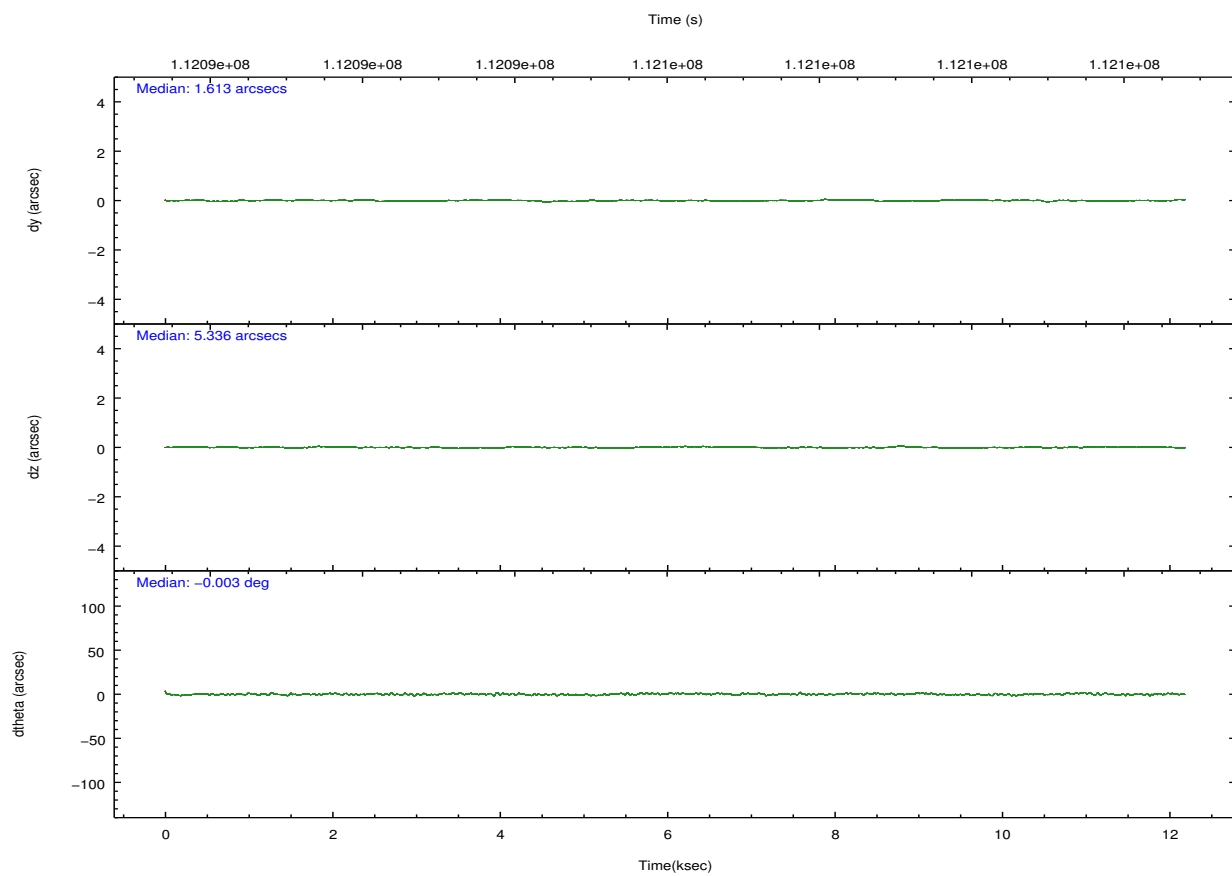
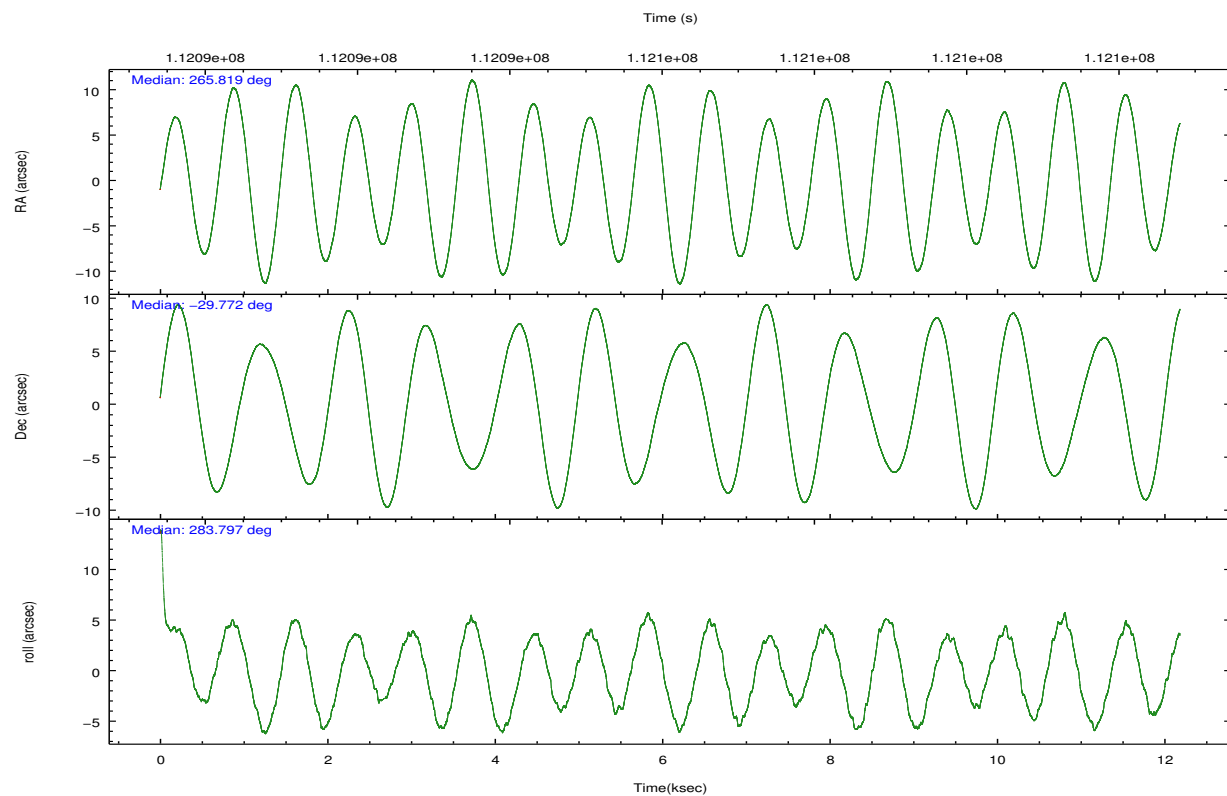
	ccd 0	ccd 1	ccd 2	ccd 3	ccd 6	ccd 7		ccd 0	ccd 1	ccd 2	ccd 3	ccd 6	ccd 7
level 1 events	30042	30209	35253	36104	33577	41453	grade 0 events	3004	3414	5517	5705	2958	2623
rejected events	24003	23405	25850	26239	27424	18322		9%	11%	15%	15%	8%	6%
rejected %	79%	77%	73%	72%	81%	44%	grade 1 events	19	25	41	36	41	43
								0%	0%	0%	0%	0%	0%
							grade 2 events	1148	1258	1587	1713	1143	4821
								3%	4%	4%	4%	3%	11%
							grade 3 events	497	558	606	695	502	2174
								1%	1%	1%	1%	1%	5%
							grade 4 events	467	558	634	605	495	2266
								1%	1%	1%	1%	1%	5%
							grade 5 events	1191	1299	1182	1358	1446	4297
								3%	4%	3%	3%	4%	10%
							grade 6 events	926	1017	1062	1149	1055	11257
								3%	3%	3%	3%	3%	27%
							grade 7 events	22790	22080	24624	24843	25937	13972
								75%	73%	69%	68%	77%	33%

2.2 Compared Parameters

Parameter	Planned	Actual	Parameter	Planned	Actual
Instrument	ACIS	ACIS	Obspar format version number	7	7
Detector	ACIS-012367	ACIS-012367	Obspar file type	PREDICTED	ACTUAL
Grating	NONE	NONE	Obspar update status	NONE	UPDATED
Data mode	FAINT	FAINT	Number of optional ACIS chips dropped	0	0
Observation mode	POINTING	POINTING	On-chip summing requested	N	N
[deg] Pointing RA	265.797021	265.8189488433785	Subarray requested	NONE	NONE
[deg] Pointing Dec	-29.751989	-29.77174896098874	Alternating exposures requested	N	N
[deg] Pointing Roll	283.587696	283.8072814997772	[s] Primary exposure time	0.000000	3.2
[deg] Roll angle	283.600000	283.600000			
[deg] Roll tolerance	2.000000	2.000000			
Roll constraint allows 180D rotation	N	N			
[mm] SIM focus pos	-0.782348	-0.7809083437167272			
[mm] SIM defocus	0	0.001439871863259334			
[mm] SIM translation stage pos	-233.592463	-233.5874344608287			
[mm] SIM translation stage offset	0	-0.005018542100998502			
[s] Observation start time (MET)	112090196.184000	112089819.90038			
Observation start date	2001-07-21T08:08:52	2001-07-21T08:03:39			
[s] Observation end time (MET)	112102196.184000	112102330.02587			
Observation end date	2001-07-21T11:28:52	2001-07-21T11:32:10			
Read mode	TIMED	TIMED			

2.3 Aspect



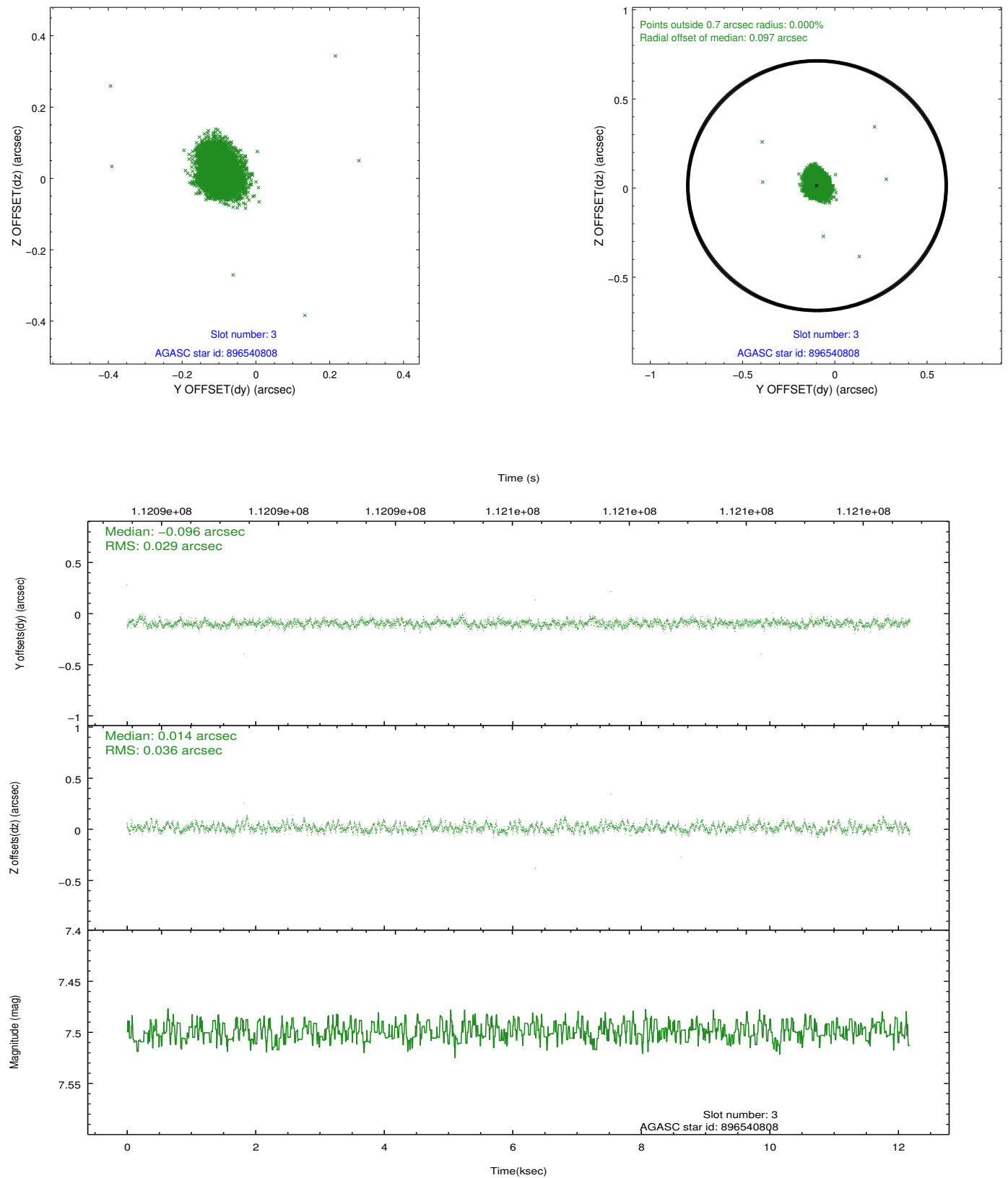


Slot Statistics

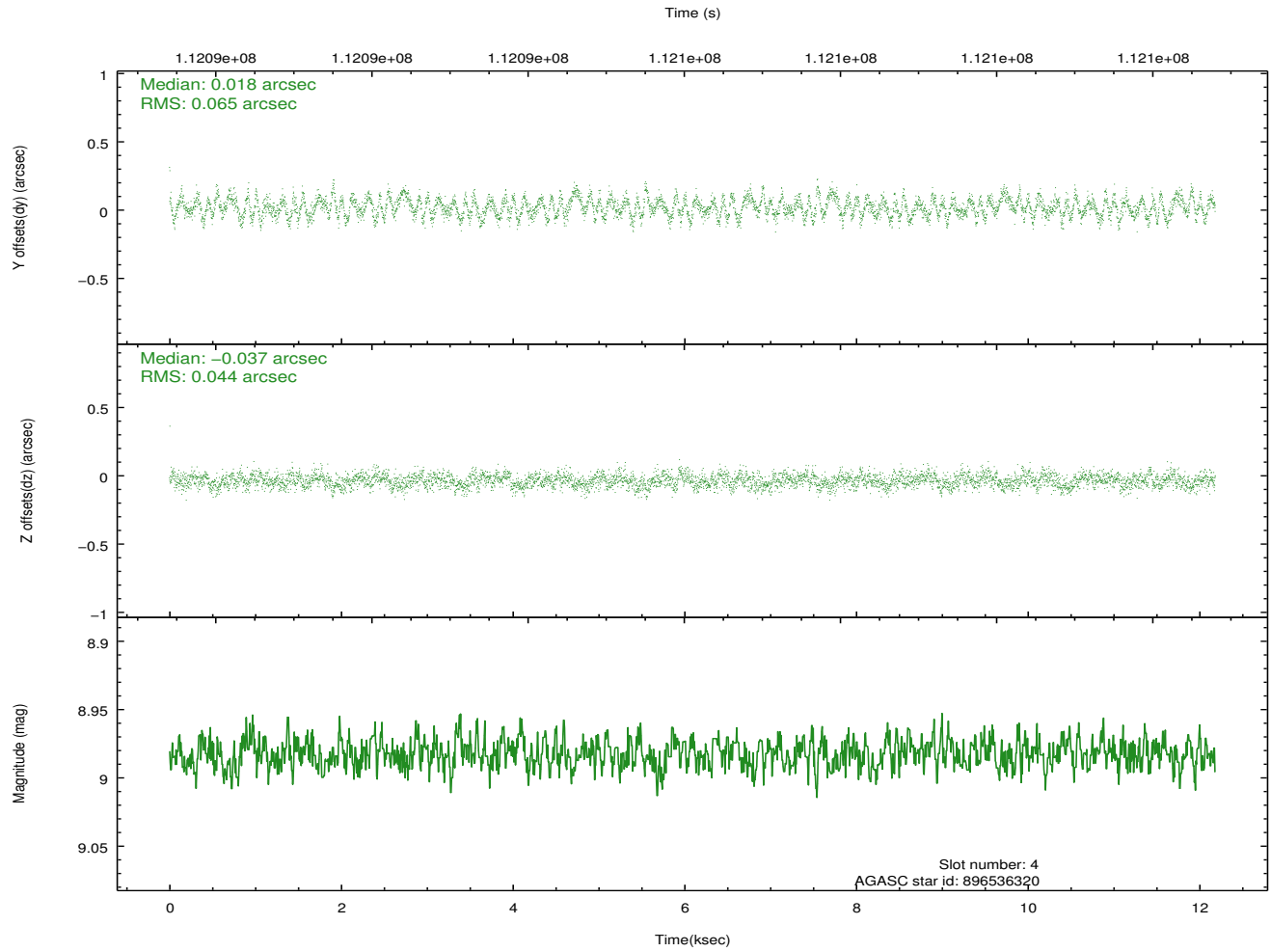
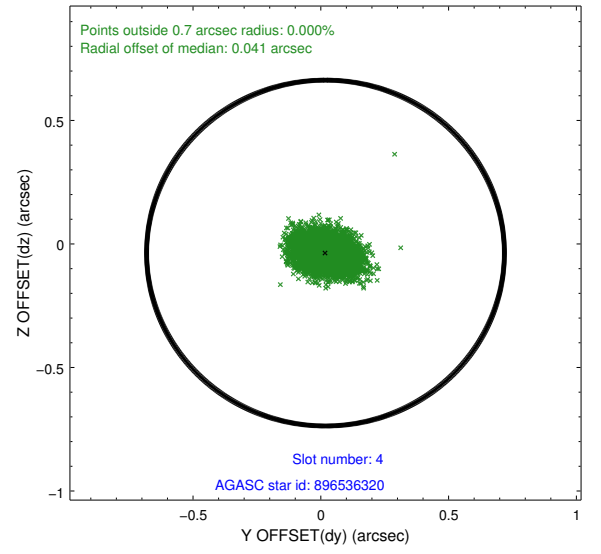
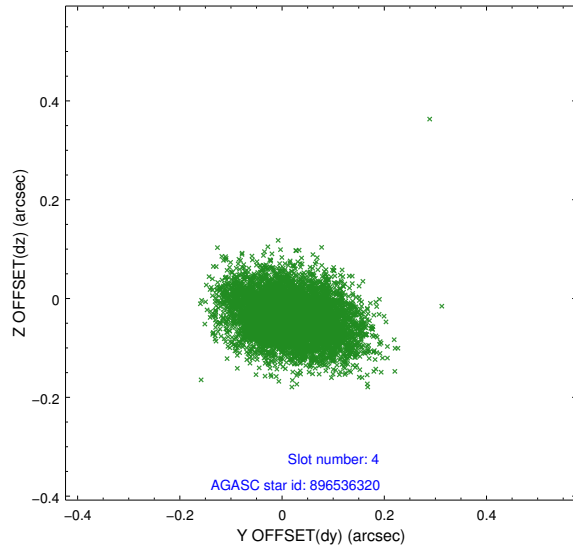
slot	status	id	mag	n_pts	med_dy	med_dz	dr1	dr2	ra	dec	mean_y	mean_z
0	FID	ACIS-I-2	7.15	2972	-0.030	-0.054	0.009	0.016	0.000000	0.000000	-755.97	-835.11
1	FID	ACIS-I-4	7.18	2971	-0.027	0.040	0.006	0.012	0.000000	0.000000	2157.88	1070.99
2	FID	ACIS-I-5	7.23	2971	-0.044	0.083	0.009	0.015	0.000000	0.000000	-1809.31	1069.29
3	GUIDE	896540808	7.50	5943	-0.096	0.014	0.048	0.078	265.985401	-29.308604	-1411.63	949.87
4	GUIDE	896536320	8.98	5944	0.018	-0.037	0.083	0.136	266.369048	-29.307026	-1130.74	2121.10
5	GUIDE	966924920	8.09	5944	0.199	0.076	0.054	0.087	265.875401	-30.176961	1545.26	-121.24
6	GUIDE	896405480	8.24	5943	-0.104	-0.019	0.056	0.090	265.220460	-29.599691	-951.36	-1626.31
7	GUIDE	966787648	8.88	5941	-0.020	-0.034	0.067	0.110	265.297931	-30.077843	779.17	-1787.44

2.4 Star Slots

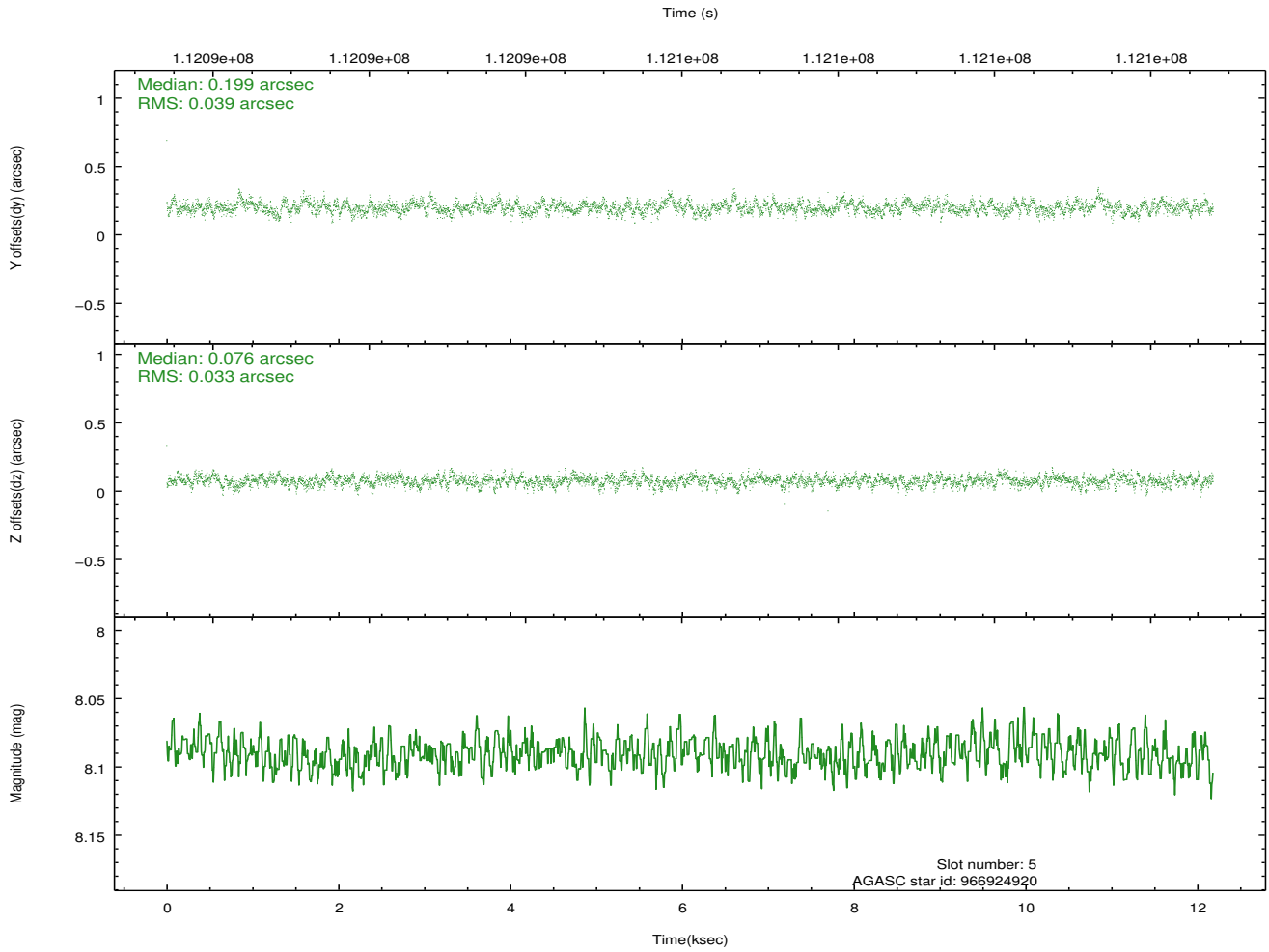
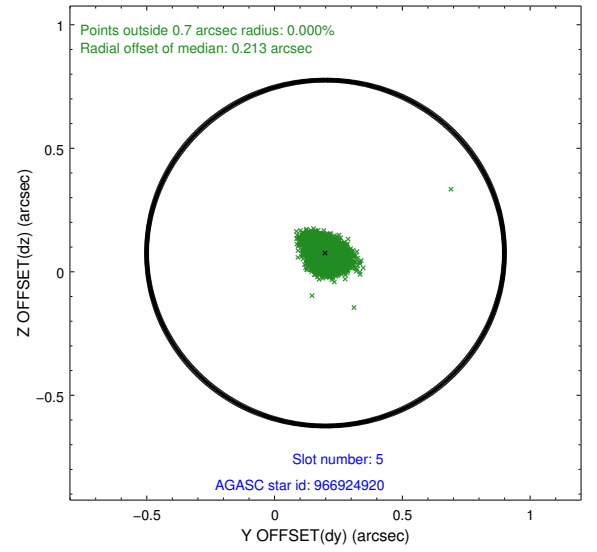
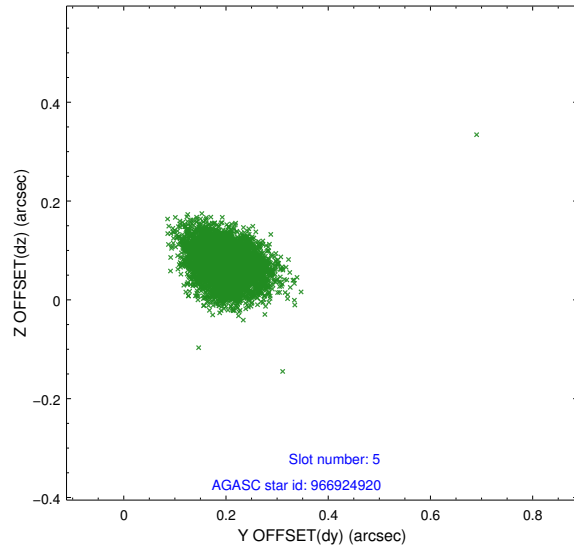
2.4.1 Slot 3



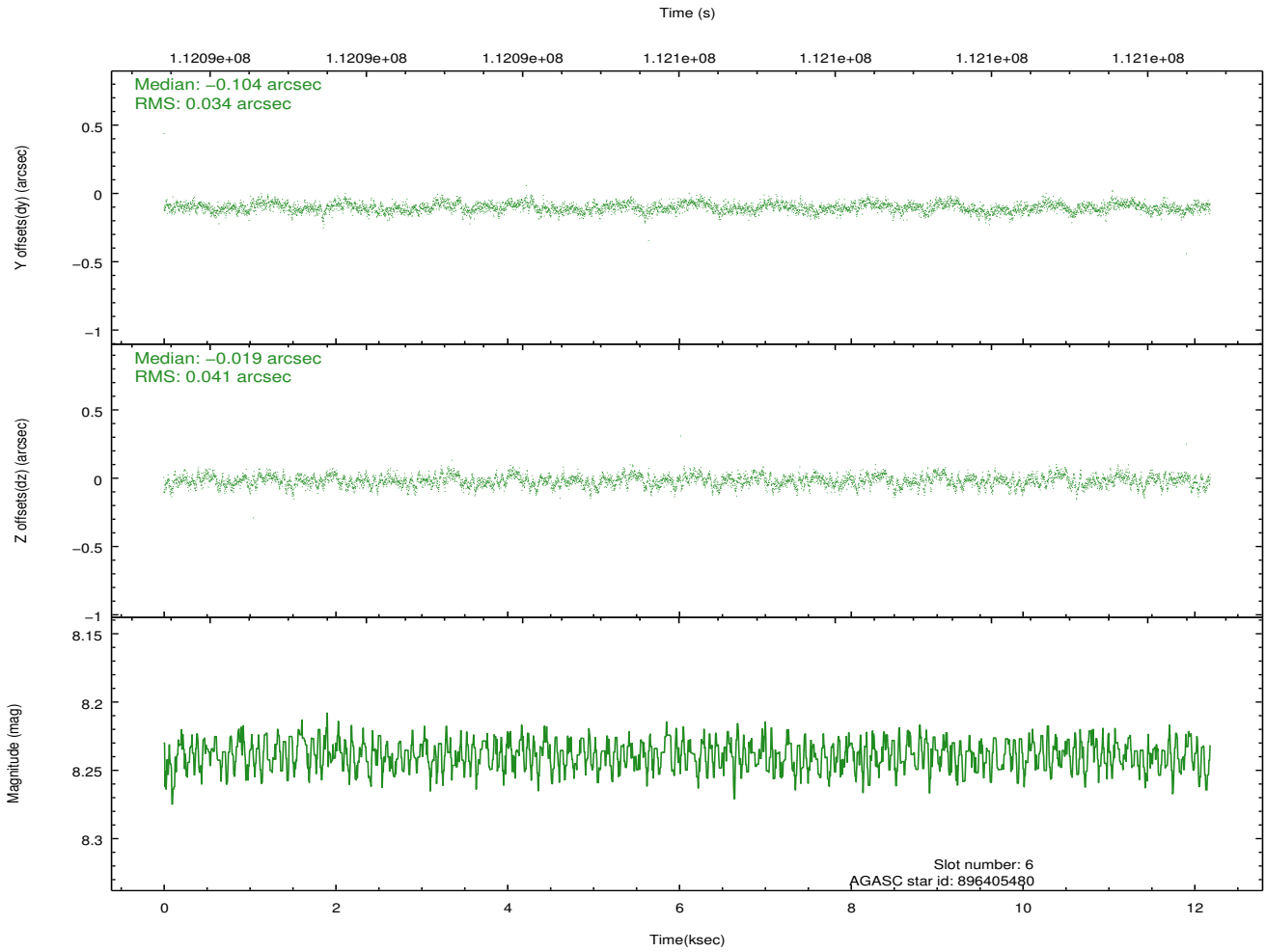
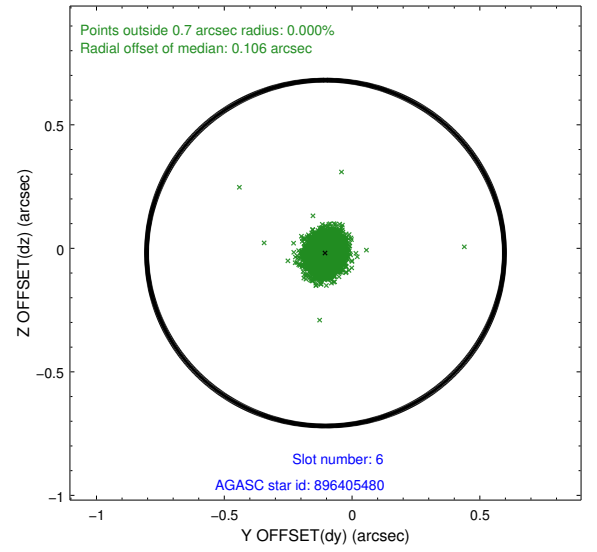
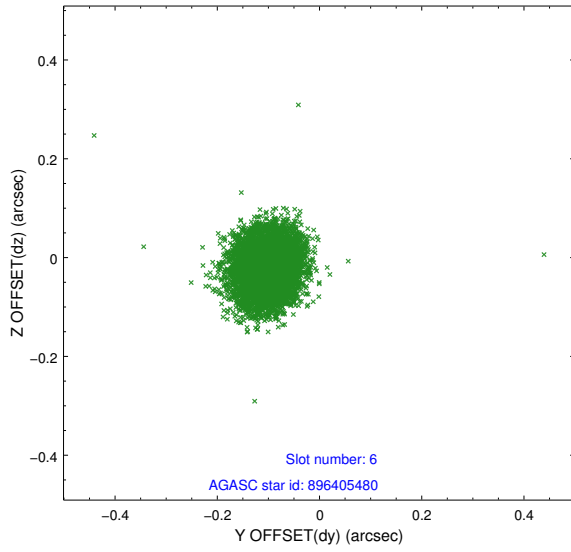
2.4.2 Slot 4



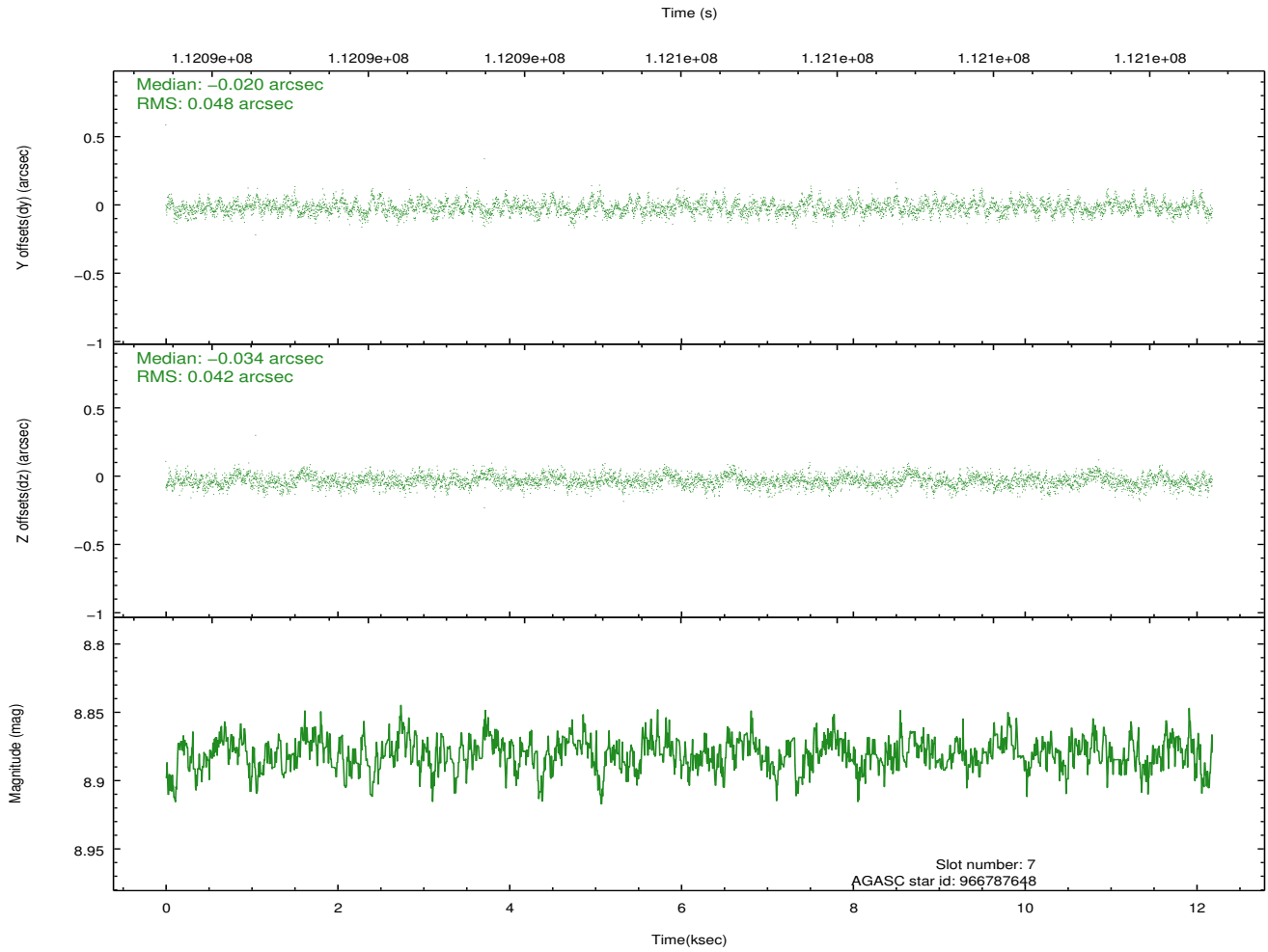
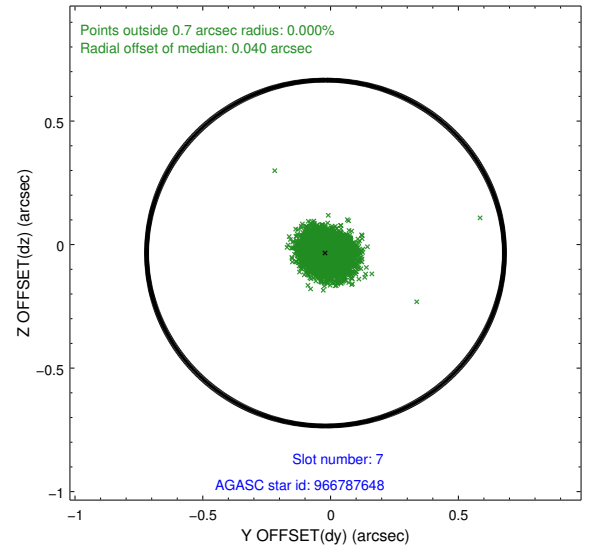
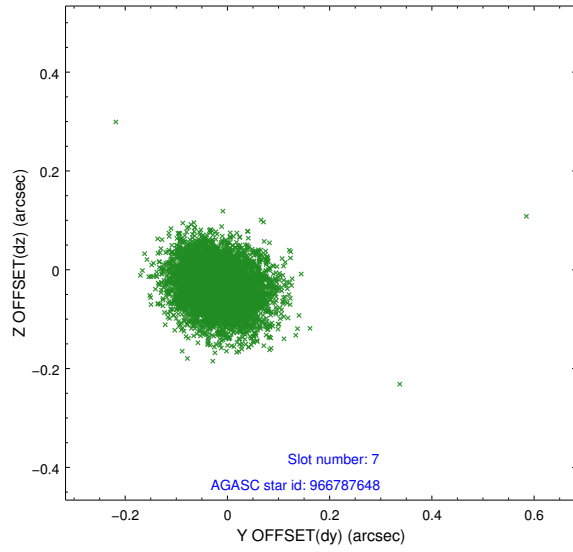
2.4.3 Slot 5



2.4.4 Slot 6

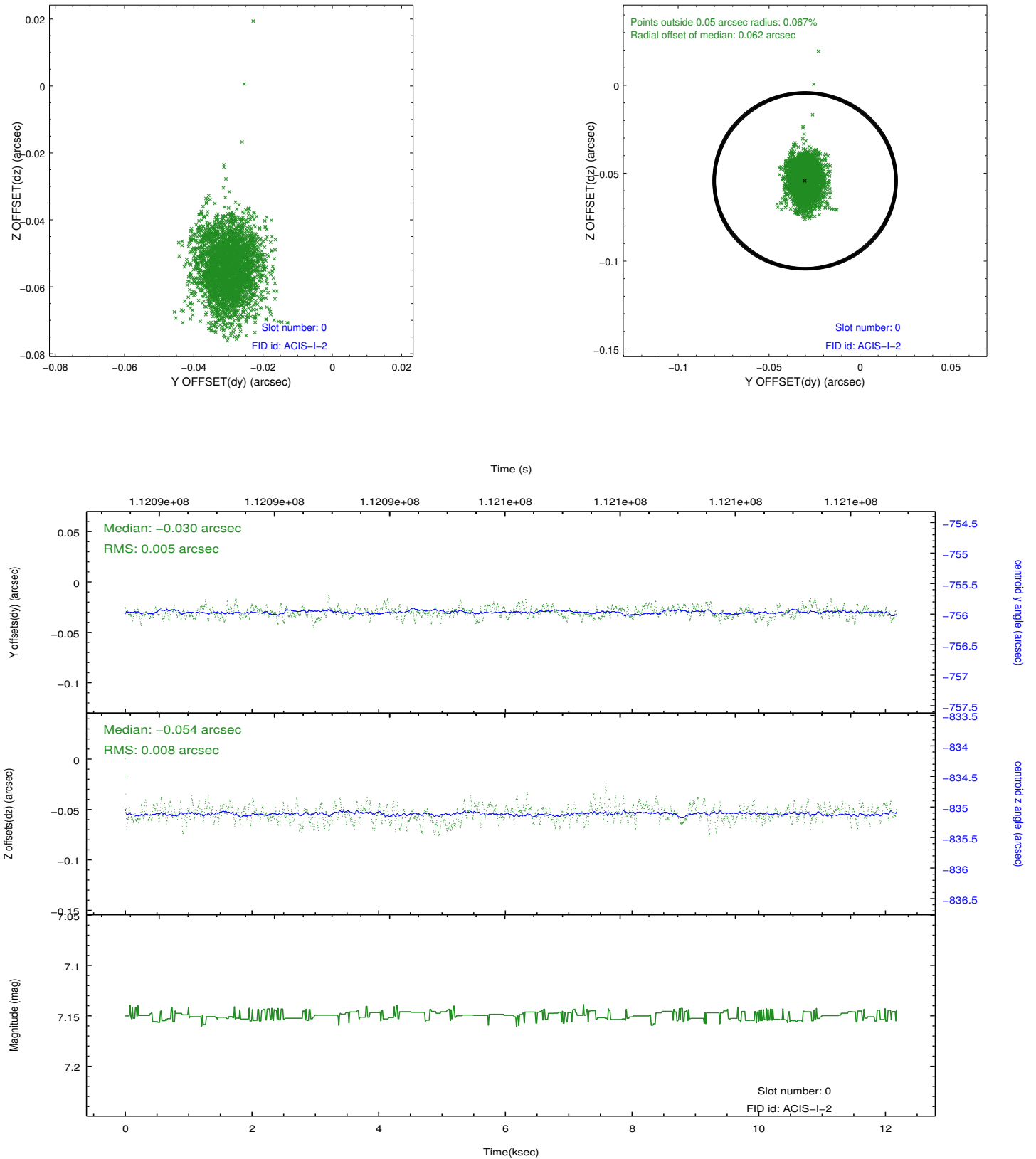


2.4.5 Slot 7

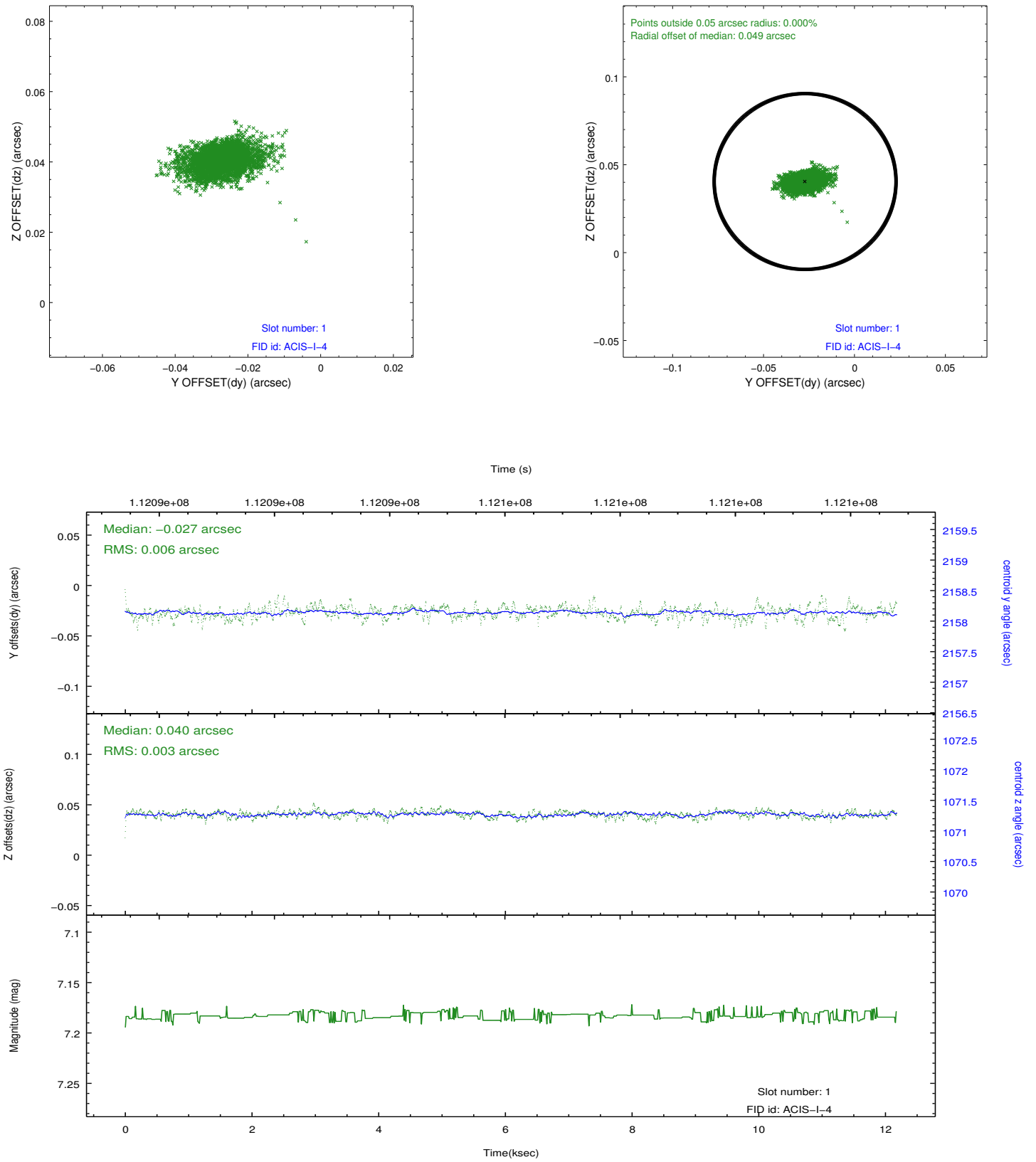


2.5 FID Slots

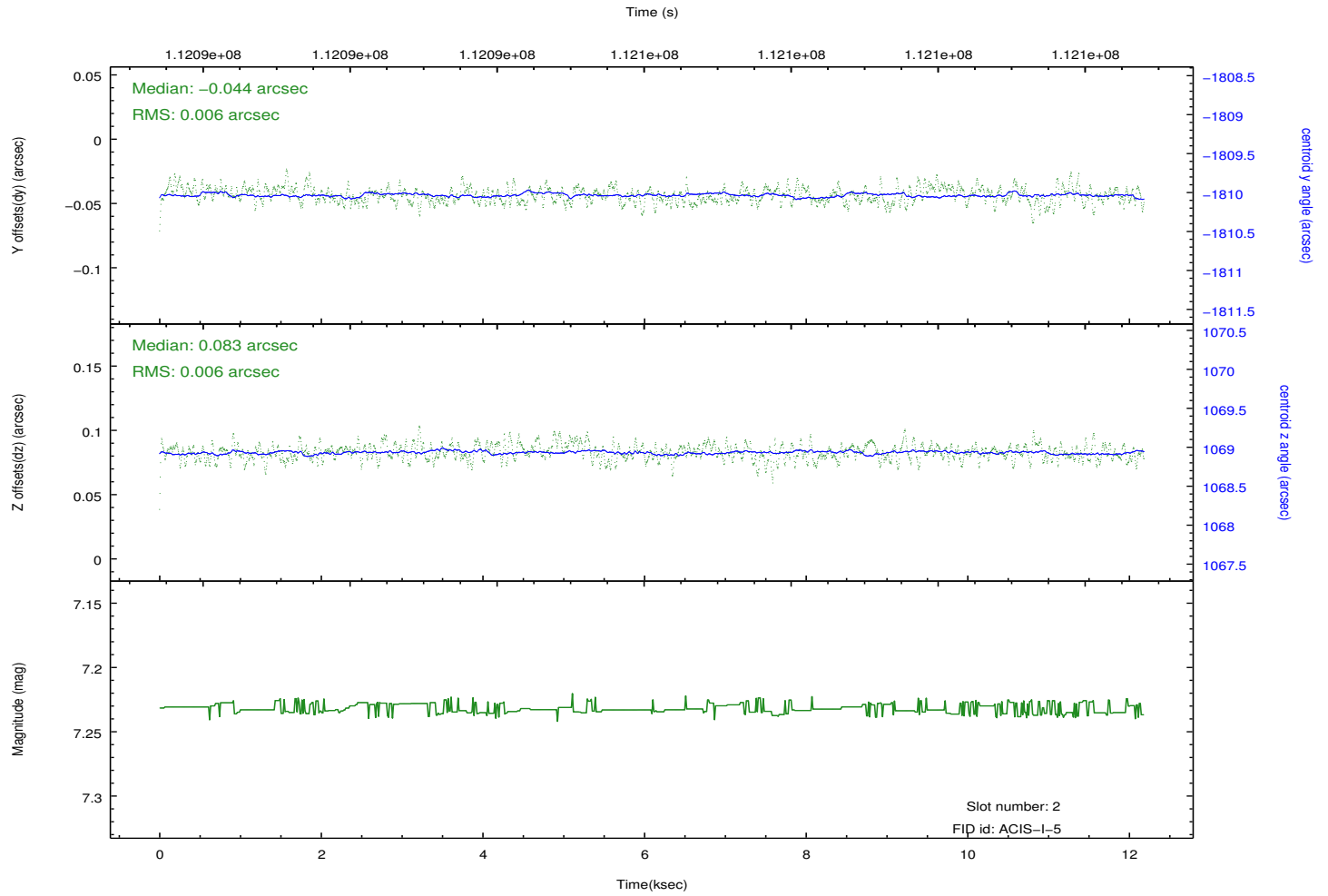
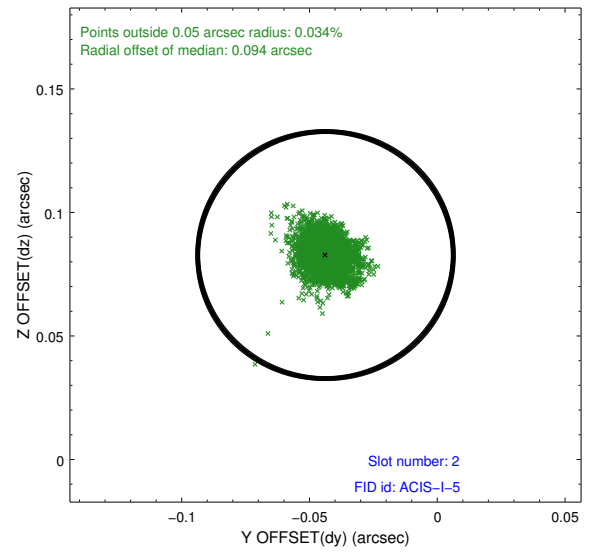
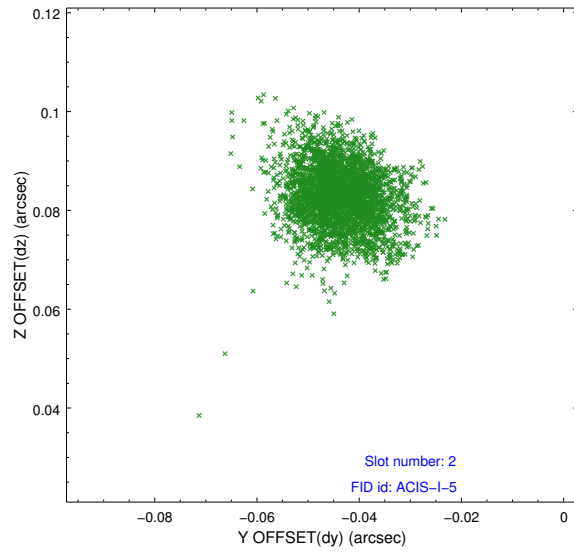
2.5.1 Slot 0



2.5.2 Slot 1



2.5.3 Slot 2



A Summary

A.1 Status

V&V Scientist	Beth Sundheim
V&V Date (YYYY-MM-DD)	2012.09.24
V&V Edition	1
V&V Disposition and Status	OK
V&V Charge Time	11.763

A.2 Comments

Roll preference met.